

Report By:

National TAB
1329 E. KEMPER ROAD
SUITE 4210
CINCINNATI, OH 45246



Report: TAB REPORT
Function: Test, Adjust, & Balance
Date: 09/19/2023

PROJECT

**09-18-23 BARTACO - WEST HARTFORD, CT
(REVIVE)**

971 Farmington Ave

West Hartford, CT 06107

Client

BarTaco

Issue List

- 1. HIGH PRIORITY - RTU ECONOMIZER HOODS NOT INSTALLED
- 2. HIGH PRIORITY - CLOGGED MAU PSP(BOTH HOODS)
- 3. HIGH PRIOTIY - MAU DUCTWORK DAMAGED
- 4. HIGH PRIORITY - MAU EVAPORATOR COIL DIRTY
- 5. LOW PRIORITY - KEF-1 MOTOR SHEAVE RUBBING ON LID
- 6. LOW PRIORITY - KEF-1&2 WIND BAND EXTENSIONS MISSING HARDWARE
- 7. LOW PRIORITY - RR EXHAUST FAN NO AIRFLOW



09-18-23 BARTACO - WEST HARTFORD, CT (REVIVE)

Project Issue Information

Issue Name : 1. HIGH PRIORITY - RTU ECONOMIZER HOODS NOT INSTALLED
Description : Economizer components and dampers appear to be installed but there is no hood/intake filters installed. Recommend installing. The building will be highly negative until installed.

Created By : National TAB **Assigned To :** National TAB - Will Turnbough

Status : Open

Originated Date : 09/20/2023 - JOASH ALBIN - National TAB

Project Issue File Details



**NOOAACCESS
09/20/2023**



**ECONOMIZERinstalled.j..
09/20/2023**



**Controls
09/20/2023**



09-18-23 BARTACO - WEST HARTFORD, CT (REVIVE)

Project Issue Information

Issue Name : 2. HIGH PRIORITY - CLOGGED MAU PSP(BOTH HOODS)
Description : PSP on both hoods are clogged and restricting the MUA airflow by about 50%. Recommend dropping the PSP's and cleaning the tops. Consulted the OEM and the MUA has cooling retrofitted on it. Airflow should be set to approximately 3000 CFM for 6 tons of cooling. A pulley change may be required after cleaning to reduce airflow to appropriate levels.
Created By : National TAB **Assigned To :** National TAB - Will Turnbough
Status : Open
Originated Date : 09/20/2023 - JOASH ALBIN - National TAB

Project Issue File Details



100percent-covered-in..
09/20/2023



09-18-23 BARTACO - WEST HARTFORD, CT (REVIVE)

Project Issue Information

Issue Name : 3. HIGH PRIOTIY - MAU DUCTWORK DAMAGED
Description : MUA is damaged and has a large hole. There are also small holes causing more minor leakage. Recommend duct be repaired and sealed to prevent leakage. Appears that the duct is being used as storage which is not recommended.
Created By : National TAB **Assigned To :** National TAB - Will Turnbough
Status : Open
Originated Date : 09/19/2023 - JOASH ALBIN - National TAB

Project Issue File Details



Majorhole
09/19/2023



Small-hole
09/19/2023



Flattened-duct
09/19/2023

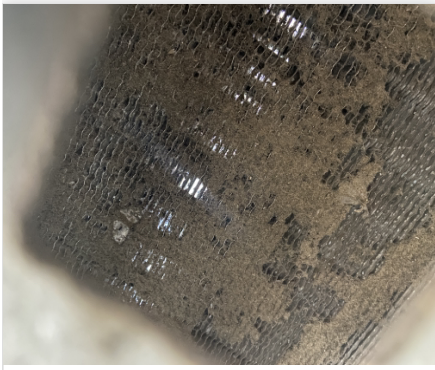


09-18-23 BARTACO - WEST HARTFORD, CT (REVIVE)

Project Issue Information

Issue Name : 4. HIGH PRIORITY - MAU EVAPORATOR COIL DIRTY
Description : Recommend cleaning coil.
Created By : National TAB **Assigned To :** National TAB - Will Turnbough
Status : Open
Originated Date : 09/20/2023 - JOASH ALBIN - National TAB

Project Issue File Details



Dirty-MUA-EVAP-coils...
09/20/2023

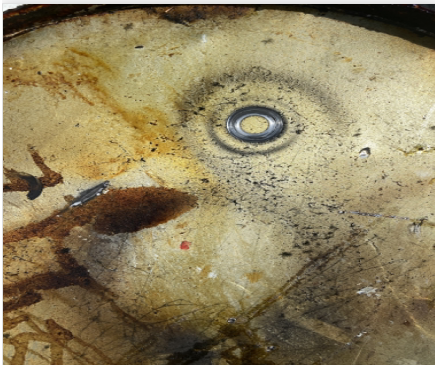


09-18-23 BARTACO - WEST HARTFORD, CT (REVIVE)

Project Issue Information

Issue Name : 5. LOW PRIORITY - KEF-1 MOTOR SHEAVE RUBBING ON LID
Description : Recommend servicing to prevent further damage.
Created By : National TAB **Assigned To :** National TAB - Will Turnbough
Status : Open
Originated Date : 09/20/2023 - JOASH ALBIN - National TAB

Project Issue File Details



MOTOR-SHEAVE-RUB-MARK..
09/20/2023



09-18-23 BARTACO - WEST HARTFORD, CT (REVIVE)

Project Issue Information

Issue Name : 6. LOW PRIORITY - KEF-1&2 WIND BAND EXTENSIONS MISSING HARDWARE
Description : Clips are missing bolts and nuts to keep the clips from coming undone. Recommend installing.
Created By : National TAB **Assigned To :** National TAB - Will Turnbough
Status : Open
Originated Date : 09/20/2023 - JOASH ALBIN - National TAB

Project Issue File Details



Missingbolt-screw.jpe..
09/20/2023



09-18-23 BARTACO - WEST HARTFORD, CT (REVIVE)

Project Issue Information

Issue Name : 7. LOW PRIORITY - RR EXHAUST FAN NO AIRFLOW
Description : Recommend servicing the exhaust fan.
Created By : National TAB **Assigned To :** National TAB - Will Turnbough
Status : Open
Originated Date : 09/19/2023 - JOASH ALBIN - National TAB

AIR BALANCE SCHEDULE

UNIT	AREA SERVED	HVAC SUPPLY		HVAC RETURN		HVAC OUTDOOR		OA %		HOOD MAKE-UP		HOOD EXHAUST		GENERAL EXH.	
		DESIGN	ACTUAL	DESIGN	ACTUAL	DESIGN	ACTUAL	DESIGN	ACTUAL	DESIGN	ACTUAL	DESIGN	ACTUAL	DESIGN	ACTUAL
RTU-1	DINING/BOH	6000	5864	6000	5864	0	0	0.0%	0.0%						
RTU-2	DINING/BOH	6000	6088	6000	6088	0	0	0.0%	0.0%						
MUA-1	HOODS									5372	2576				
KX-1	HOODS											3597	3498		
KX-2	HOODS											3117	3287		
DWX-1	DISH											600	278		
TX-1	RESTROOM													375	0
TOTALS		12000	11952	12000	11952	0	0			5372	2576	7314	7063	375	0

NET BUILDING AIRFLOW CALCULATION

TOTALS	DESIGN	ACTUAL
TOTAL OA	5372	2576
TOTAL EXHAUST	7689	7063
NET AIRFLOW	-2317	-4487

DOOR TESTED	BUILDING PRESSURE MEASUREMENTS (IN. H2O)
FRONT	-0.069
SIDE	-0.075
REAR	-0.079
AVERAGE	-0.0743

FINAL CHECKS

- ACTUAL NET AIRFLOW COINCIDES WITH DESIGN: ✓

- MEASURED PRESSURES COINCIDES WITH ACTUAL NET AIRFLOW: ✓

- PRESSURE FALLS WITHIN IMC TOLERANCE OF +/-0.02" W.C. ✗

NOTES:

National TAB

Project: 09-18-23 BARTACO - WEST HARTFORD, CT (REVIVE)

System/Unit: AHU/RTU



Asset: RTU1

AREA:DINING/BOH

Unit Data		
	Design	Actual
MFG	CARRIER	YORK
Serial Num	-	N1B2593401
Model Num	48HCEE17D	ZS-15N40BTAAA1
Type	RTU	RTU
Configuration	VERTICAL	HORIZONTAL
Num OA Filters 1	-	NA
OA Filter Size 1	-	NA
Num Final Filter 1	-	5
Final Filter Size 1	-	18X24X2

Motor Data		
	Design	Actual
Motor MFG	-	BALDOR
Frame	-	184T
Horsepower	-	5
Motor Rpm	-	1750
Phase	3	3
Rated Voltage	208	208
Rated Amperage	-	13

Drive Data		
	Design	Actual
Motor Sheave Size	-	6.5"
Motor Bore Size	-	1.125
Motor Sheave SetPt	-	2.5 OPEN
Fan Sheave Size	-	11"
Fan Sheave Bore	-	0.875"
Belt CL Distance	-	26"
Num of Belts	-	1
Belt Size	-	BX75
Belt Alignment	-	GOOD

Test Data		
	Design	Actual
SF CFM	6000	5846
SF RPM	-	851
RA CFM	6000	
OA CFM	0	0
RL Voltage	-	208/209/210
RL Amperage	-	8.5/8.5/8.4
SF Rotation	-	CCW
RA Damper Position	-	100%
Min OA Damper Position	-	NA
Min OA Damper Type	-	NA
OA Enthalpy Setpt	-	NA

Performance Data		
	Design	Actual
MA Plenum SP	-	-0.13"
Fan Suction SP	-	-0.70"
Fan Discharge SP	-	0.31"
Total ESP	0.75	0.83"
Fan Total SP	-	1.01"

General		
	Design	Actual
Fan Rotation Correct	-	YES
Unit Filters Clean	-	NO
Condensate Drain Installed	-	YES

Completed By: JOASH ALBIN on 09/19/2023

National TAB

Project: 09-18-23 BARTACO - WEST HARTFORD, CT (REVIVE)



System/Unit: AHU/RTU

Asset: RTU2

AREA:DINING/BOH

Unit Data		
	Design	Actual
MFG	CARRIER	YORK
Serial Num	-	N1D2734993
Model Num	48HCCEE17D	ZS-15N40BTAAA1B
Type	RTU	RTU
Configuration	VERTICAL	HORIZONTAL
Num OA Filters 1	-	NA
OA Filter Size 1	-	NA
Num Final Filter 1	-	5
Final Filter Size 1	-	18X24X2

Motor Data		
	Design	Actual
Motor MFG	-	BALDOR
Frame	-	184T
Horsepower	-	5
Motor Rpm	-	1750
Phase	3	3
Rated Voltage	208	208
Rated Amperage	-	13

Drive Data		
	Design	Actual
Motor Sheave Size	-	6.5"
Motor Bore Size	-	1.125"
Motor Sheave SetPt	-	0.5 OPEN
Fan Sheave Size	-	11"
Fan Sheave Bore	-	0.875"
Belt CL Distance	-	26"
Num of Belts	-	1
Belt Size	-	BX75
Belt Alignment	-	GOOD

Test Data		
	Design	Actual
SF CFM	6000	6088
SF RPM	-	915
RA CFM	6000	6088
OA CFM	0	0
RL Voltage	-	208/210/211
RL Amperage	-	8.5/8.7/8.6
SF Rotation	-	CCW
RA Damper Position	-	100%
Min OA Damper Position	-	0%
Min OA Damper Type	-	NA
OA Enthalpy Setpt	-	NA

Performance Data		
	Design	Actual
MA Plenum SP	-	-0.17"
Fan Suction SP	-	-0.90"
Fan Discharge SP	-	0.52"
Total ESP	0.75	1.07"
Fan Total SP	-	1.42"

General		
	Design	Actual
Fan Rotation Correct	-	YES
Unit Filters Clean	-	NO
Condensate Drain Installed	-	YES

Completed By: JOASH ALBIN on 09/20/2023

Notes:
BELT SLIGHTLY ABOVE FAN SHEAVE

Written By: JOASH ALBIN on 09/19/2023

National TAB

Project: 09-18-23 BARTACO - WEST HARTFORD, CT (REVIVE)

System/Unit: FAN - Exhaust



Asset: DWX1

AREA:DISHWASHER

Unit Data		
	Design	Actual
MFG	GREENHECK	DAYTON
Model Num	USGF-140HP-4	4YY14
Serial Num	-	21760737
Type	ROOF MNTD	ROOF MOUNTED
Configuration	VERTICAL	VERTICAL

Motor Data		
	Design	Actual
Motor MFG	-	DAYTON
Frame	-	48YZ
Horsepower	1/4	1/3
Motor Rpm	-	1725
Phase	1	1
Voltage (rated)	115	115
Amperage (rated)	-	6.6
Service Factor	-	1.0

Test Data		
	Design	Actual
CFM	600	278
Fan RPM	-	1700
Fan Rotation	-	CCW
Motor RPM	-	1740
System SetPt	-	4 OPEN
RL Voltage	-	119
RL Amperage	-	3.1
Total ESP	1.25"	0.37"
Fan Inlet SP	-	-0.37"
Fan Discharge SP	-	ATM

Completed By: JOASH ALBIN on 09/20/2023

National TAB

Project: 09-18-23 BARTACO - WEST HARTFORD, CT (REVIVE)

System/Unit: FAN - Exhaust



Asset: KX1

AREA: KITCHEN HOOD

Unit Data		
	Design	Actual
MFG	GREENHECK	CAPTIVE AIRE
Model Num	SWB-215-20	NA16FA
Serial Num	-	1425202
Type	UTILITY	UPBLAST
Configuration	VERTICAL	VERTICAL

Motor Data		
	Design	Actual
Motor MFG	-	WEG
Frame	-	E56
Horsepower	2.0	2
Motor Rpm	-	1710
Phase	3	3
Voltage (rated)	208	208
Amperage (rated)	-	6.2
Service Factor	-	1.15

Test Data		
	Design	Actual
CFM	3597	3498
Fan RPM	-	1145
Fan Rotation	-	CCW
Motor RPM	-	1739
System SetPt	-	1 TURN OPEN
RL Voltage	-	208/209/210
RL Amperage	-	4.5/4.6/4.7
Total ESP	1.25"	1.38"
Fan Inlet SP	-	-1.38"
Fan Discharge SP	-	ATM

Completed By: JOASH ALBIN on 09/19/2023

Notes:
GREASE OVERFLOW, HEAVY GREASE INSIDE SHROWD,

MOTOR BORE RUBBING ON TOP OF LID

Written By: JOASH ALBIN on 09/19/2023

National TAB

Project: 09-18-23 BARTACO - WEST HARTFORD, CT (REVIVE)

System/Unit: FAN - Exhaust



Asset: KX2

AREA: KITCHEN HOOD

Unit Data		
	Design	Actual
MFG	GREENHECK	CAPTIVE-AIRE
Model Num	SWB-215-20	NA16FA
Serial Num	-	1425202
Type	UTILITY	UPBLAST
Configuration	VERTICAL	VERTICAL

Motor Data		
	Design	Actual
Motor MFG	-	WEG
Frame	-	E56
Horsepower	2.0	2
Motor Rpm	1725	1710
Phase	3	3
Voltage (rated)	208	208
Amperage (rated)	-	6.2
Service Factor	-	1.15

Test Data		
	Design	Actual
CFM	3117	3287
Fan RPM	-	1745
Fan Rotation	-	CCW
Motor RPM	-	909
System SetPt	-	2 TURNS OPEN BX-25 5 TURNS OPEN
RL Voltage	-	208/209/
RL Amperage	-	4.0/4.1/4.2
Total ESP	1.25"	1.02"
Fan Inlet SP	-	-1.02"
Fan Discharge SP	-	ATM

Completed By: JOASH ALBIN on 09/19/2023

Notes:
REDUCED FROM 4383 TO 3287

Written By: JOASH ALBIN on 09/20/2023

National TAB

Project: 09-18-23 BARTACO - WEST HARTFORD, CT (REVIVE)

System/Unit: FAN - Exhaust



Asset: TX1

AREA:RR

Unit Data		
	Design	Actual
MFG	GREENHECK	FANTECH
Model Num	GB-091-4	FKD8XL
Serial Num	-	1004349717
Type	UPBLAST	INLINE
Configuration	VERTICAL	VERTICAL

Motor Data		
	Design	Actual
Motor MFG	-	NL
Frame	-	NL
Horsepower	1/4	NL
Motor Rpm	1725	NL
Phase	1	1
Voltage (rated)	120	115
Amperage (rated)	-	2.99
Service Factor	-	1

Drive Data		
	Design	Actual
Motor Sheave Size	-	NO ACCESS
Motor Bore Size	-	NO ACCESS
Motor Sheave SetPt	-	NO ACCESS
Fan Sheave Size	-	NO ACCESS
Fan Sheave Bore	-	NO ACCESS
Belt CL Distance	-	NO ACCESS
Num of Belts	-	NO ACCESS
Belt Size	-	NO ACCESS

Test Data		
	Design	Actual
CFM	375	0
Fan RPM	-	0
Fan Rotation	-	0
Motor RPM	-	0
RL Voltage	-	0
RL Amperage	-	0
Suction ESP	-	0
Discharge ESP	-	0
Total ESP	0.5"	ATM

Completed By: JOASH ALBIN on 09/20/2023

Notes:
NO RESTROOM EXHAUST

Written By: JOASH ALBIN on 09/20/2023

National TAB

Project: 09-18-23 BARTACO - WEST HARTFORD, CT (REVIVE)

System/Unit: FAN - Supply



Asset: MUA1

AREA:

Unit Data		
	Design	Actual
MFG	NA	CAPTIVE AIRE
Model Num	NA	A2-G15
Serial Num	-	1425202
Type	MUA	MUA
Configuration	VERTICAL	VERTICAL

Motor Data		
	Design	Actual
Motor MFG	-	WEG
Frame	-	E56
Horsepower	-	3
Motor Rpm	-	1730
Phase	3	3
Voltage (rated)	208	208
Amperage (rated)	-	8.7
Service Factor	-	1.0

Gas Heat		
	Design	Actual
Heater Operates (y/n)	-	YES
Flame Status (pass/fail)	-	PASS
Inlet Air Temp SetPt	-	60
Discharge Air Temp SetPt	-	70
Air Flow Switch SP Actual	-	0.23"

Test Data		
	Design	Actual
CFM	5372	2576
SF RPM	-	1761
Motor RPM	-	904
SF System SetPt	-	BELT
RL Voltage	-	208/209/209
RL Amperage	-	5.4/4.8/5.1
Total ESP	-	NA
Fan Discharge SP	-	NA

General		
	Design	Actual
Fan Rotation Correct	-	YES

Completed By: JOASH ALBIN on 09/19/2023

National TAB

Project: 09-18-23 BARTACO - WEST HARTFORD, CT (REVIVE)



System/Unit: Kitchen Hood Type I

Asset: HD1

AREA:

Unit Data		
	Design	Actual
MFG	NA	CAPTIVE AIRE
Model Num	NA	FRONT
Job / Serial Num	-	1425202
Type	-	PSP
Hood length	-	200
Hood Width	-	60
Supply Plenum Type	-	PSP
Supply Plenum Width	-	16
Supply Plenum Length	-	200

Test Data Exhaust		
	Design	Actual
Filter Type	-	BAFFLE
Filter Size 1	-	16X18
Filter Size 2	-	16X16
Filter Qty 1	-	8
Filter Qty 2	-	6
Filter AK factor size 1	-	2.08
Filters AK factor size 2	-	1.63
Filter Total AK Area	-	19.88
Filter1 FPM	-	135
Filter2 FPM	-	150
Filter3 FPM	-	188
Filter4 FPM	-	225
Filter5 FPM	-	256
Filter6 FPM	-	215
Filter7 FPM	-	178
Filter8 FPM	-	145
Filter9 FPM	-	142
Filter10 FPM	-	129
Filter Ave FPM(corr)	-	176
CFM	-	3498

Cooking Equipment		
	Design	Actual
Item 1	-	GRIDDLE
Item 2	-	FRYER
Item 3	-	GRIDDLE
Item 4	-	FRYER

Test Data Supply		
	Design	Actual
Total AK Area	-	200X16
Kv factor (Vel)	-	22.2
Num of Readings	-	12
Reading1 FPM	-	70
Reading2 FPM	-	77
Reading3 FPM	-	73
Reading4 FPM	-	71
Reading5 FPM	-	14
Reading6 FPM	-	70
Reading7 FPM	-	25
Reading8 FPM	-	76
Reading9 FPM	-	79
Reading10 FPM	-	70
Reading11 FPM	-	70
Reading12 FPM	-	72
Reading13 FPM	-	
Reading14 FPM	-	
Ave FPM(corr)	-	52
CFM	-	1155

Completed By: JOASH ALBIN on 09/19/2023

National TAB

Project: 09-18-23 BARTACO - WEST HARTFORD, CT (REVIVE)



System/Unit: Kitchen Hood Type I

Asset: HD2

AREA:

Unit Data		
	Design	Actual
MFG	NA	CAPTIVE AIRE
Model Num	NA	NA16FA
Job / Serial Num	-	1425202
Type	-	UPBLAST
Hood length	-	200
Hood Width	-	60
Supply Plenum Type	-	PSP
Supply Plenum Width	-	16
Supply Plenum Length	-	200

Test Data Exhaust		
	Design	Actual
Filter Type	-	BAFFLE
Filter Size 1	-	16X18
Filter Size 2	-	16X16
Filter Qty 1	-	8
Filter Qty 2	-	2
Filter AK factor size 1	-	2.08
Filters AK factor size 2	-	1.62
Filter Total AK Area	-	19.88
Filter1 FPM	-	150
Filter2 FPM	-	202
Filter3 FPM	-	245
Filter4 FPM	-	300
Filter5 FPM	-	305
Filter6 FPM	-	281
Filter7 FPM	-	225
Filter8 FPM	-	176
Filter9 FPM	-	154
Filter10 FPM	-	125
Filter11 FPM	-	
Filter12 FPM	-	
Filter Ave FPM(corr)	-	220
CFM	-	4356

Cooking Equipment		
	Design	Actual
Item 1	-	OVEN
Item 2	-	RANGE
Item 3	-	FRYER
Item 4	-	
Item 5	-	

Test Data Supply		
	Design	Actual
Total AK Area	-	200X16
Kv factor (Vel)	-	0.90
Num of Readings	-	12
Reading1 FPM	-	71
Reading2 FPM	-	70
Reading3 FPM	-	54
Reading4 FPM	-	57
Reading5 FPM	-	75
Reading6 FPM	-	71
Reading7 FPM	-	73
Reading8 FPM	-	70
Reading9 FPM	-	70
Reading10 FPM	-	70
Reading11 FPM	-	72
Reading12 FPM	-	79
Reading14 FPM	-	
Ave FPM(corr)	-	64
CFM	-	1422

Completed By: JOASH ALBIN on 09/19/2023

National TAB

Project: 09-18-23 BARTACO - WEST HARTFORD, CT (REVIVE)

System/Unit: Kitchen Hood Type II



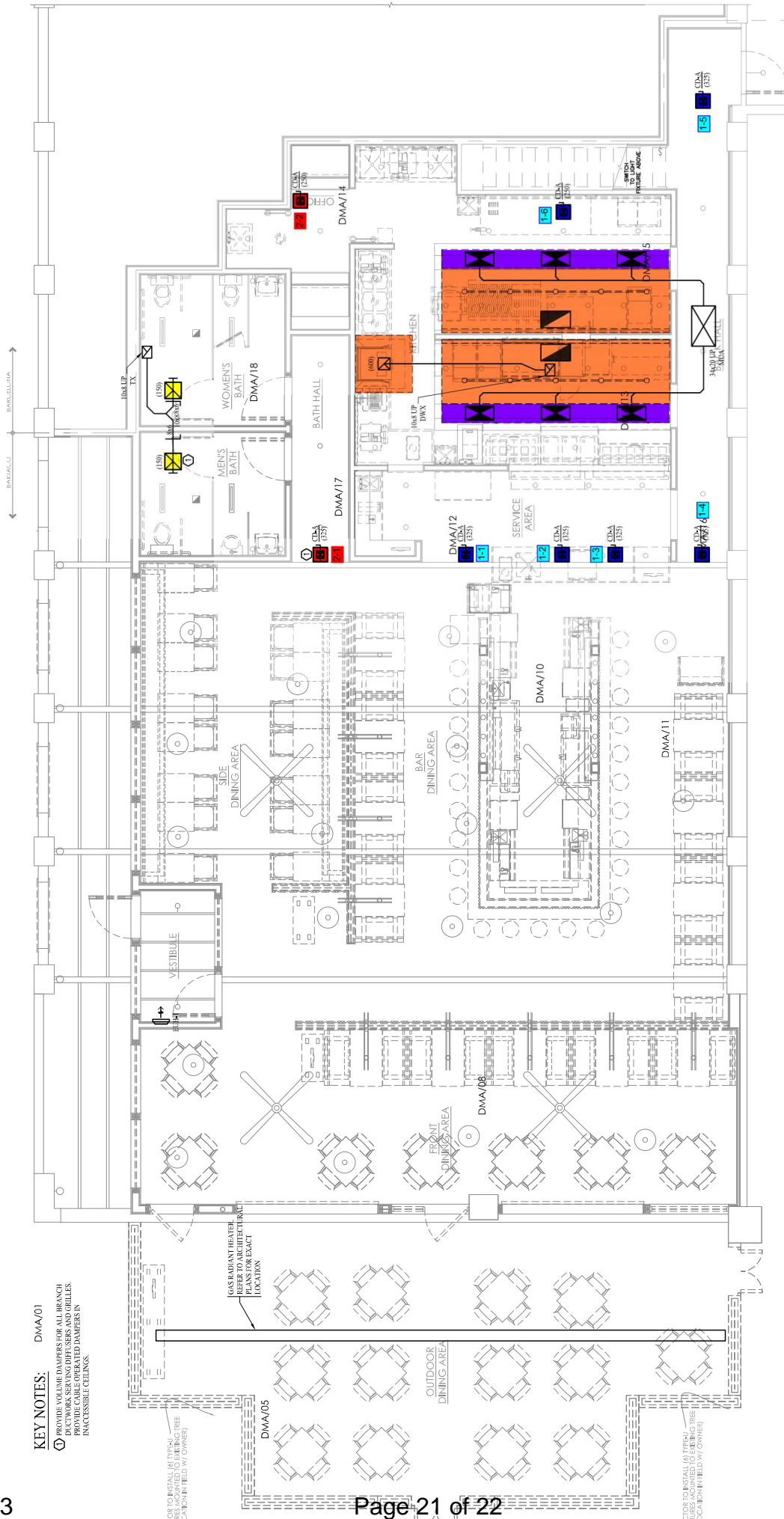
Asset: HD(Type2)1

AREA:

Unit Data		
	Design	Actual
MFG	NA	DAYTON
Model Num	NA	4YY14
Serial Num	-	217607737
Type	-	DISH
Hood length	-	54
Hood Width	-	54

Test Data		
	Design	Actual
Exhaust CFM	-	278

Completed By: JOASH ALBIN on 09/20/2023



KEY NOTES:

- DMA/01 PROVIDES FOR THE DAMPERS FOR ALL BRANCH DUCTWORKS SERVING DIFFUSERS AND GRILLES. PROVIDE CABLE OPERATED DAMPERS IN INACCESSIBLE CEILINGS.

CONTRACTOR TO INSTALL (6) 1/2" x 4" SPRING OPERATED DAMPERS (FIELD W/ OWNER)

GAS RADIANT HEATER. SEE FOR ELECTRICAL REQUIREMENTS AND LOCATION

CONTRACTOR TO INSTALL (6) 1/2" x 4" SPRING OPERATED DAMPERS (FIELD W/ OWNER)

