

SECTION 15732 - PACKAGED ROOFTOP AIR-CONDITIONING UNITS

PART 1 - GENERAL

1.1 SECTION REQUIREMENTS

- A. Submittals: Product Data and Shop Drawings.
- B. Comply with ASHRAE 15.
- C. EER: Equal to or greater than prescribed by the energy code adopted by the Authority Having Jurisdiction.
- D. Warranties: Submit written warranty, signed by the manufacturer, agreeing to the repair or replacement of components that fail within 5 years of Substantial Completion.

PART 2 - PRODUCTS

2.1 PACKAGED UNITS, 5 TO 20 TONS

- A. Factory assembled and tested, consisting of compressors, condensers, evaporator coils, condenser and evaporator fans, refrigeration and temperature controls, filters, and dampers.
 - 1. Refer to Rooftop Heating/Cooling Unit Schedule on drawing M000 for capacities, and manufacturers.
 - 2. Evaporator Fans: Belt or direct driven, forward curved centrifugal.
 - 3. Exhaust/Blow Fans: Direct drive, forward curved centrifugal or propeller.
 - 4. Condenser Fans: Direct drive propeller.
 - 5. Refrigerant Coils: Aluminum fins and copper coil.
 - 6. Compressors: Serviceable hermetic or fully hermetic, with safety controls, hot gas bypass, and timed off controls.
 - 7. Heat Exchangers: Gas fired, with gas controls, electronic ignition, high limit cutout, and forced draft proving switch.
 - 8. Economizer controls (Comparative Enthalpy, 100% capacity).
 - 9. Smoke Detectors: Photoelectric in supply and/or returns called for in schedule on sheet M600.
- B. Operating Controls: Two stage heating and two stage cooling on units 7 1/2 tons and over.
- 11. Roof curb.
- 12. Control Wiring from T-stat to rooftop unit: Shall be 18ga / 7 conductor, rated for plenum applications.
- 13. Control Wiring from T-stat to remote sensor: Shall be a separate 18ga / 2 conductor shielded, rated for plenum applications.

PART 3 - EXECUTION

3.1 INSTALLATION

- A. Install units level and plumb and firmly anchored.
- B. Connect gas piping to burner with pipe same size as gas train inlet, and provide union with sufficient clearance for burner removal and service.
- C. Install ducts to termination in roof mounting frames. Terminate ducts through roof structure.
- D. Connect units to wiring systems and to ground.

END OF SECTION 15732

SECTION 15810 - DUCTS AND ACCESSORIES

PART 1 - GENERAL

1.1 SECTION REQUIREMENTS

- A. Submittals: Product Data for fire and smoke dampers.
- B. Comply with NFPA 90A for systems serving spaces more than 25,000 cu. ft. in volume or building Types II, IV, and V construction more than 15 stories in height.
- C. Comply with NFPA 90B for systems serving spaces in 1 or 2 family dwellings or serving spaces less than 25,000 cu. ft.
- D. Comply with NFPA 96, "Ventilation Control and Fire Protection of Commercial Cooking Operations," for kitchen hood ducts.
- E. Comply with UL 181 and UL 181A for ducts and closures.
- F. Testing, Adjusting, and Balancing Agency Qualifications: AABC certified (to be furnished by Tenant).

PART 2 - PRODUCTS

2.1 DUCTS

- A. Spiral Duct: Spiral Lock Seam, without insulation, G90 galvanized finish, ASTM A 653/G90
 - 1. Basis of Design Manufacturers: Lindab SPIROSAFE, alternatives to the basis of design must be submitted for review.
 - 2. Fittings: Factory produced standing seam construction with internal sealing. Fittings with a major axis of 36" or smaller shall be 20 gauge. Fittings with a major axis of 37"-48" shall be 18 gauge.
- B. Galvanized Steel Sheet: Forming steel; ASTM A 653/G90, G90 coating designation.
- C. Duct Liner: ASTM C 1201, Type I, with an airstream surface coated with a temperature resistant coating. Thickness: 1 1/2 inch. R-value: R.
 - 1. Adhesive: ASTM C 216, Type I.
 - 2. Mechanical Fasteners: Galvanized steel pin, length as required to penetrate liner plus a 1/8 inch projection maximum into the airstream.
- D. Joint and Seam Tape: Comply with UL 181A.
- E. Joint and Seam Sealant: Comply with UL 181A.
- F. Rectangular Metal Duct Fabrication: Comply with SMACNA's "HVAC Duct Construction Standards" for metal thickness, reinforcing tapes and intervals, tie rod applications, and joint types and intervals.

2.2 ACCESSORIES

- A. Volume-Control Dampers: Factory fabricated volume control dampers, complete with required hardware and accessories. Single blade and multiple opposed blade, standard leakage rating, and suitable for horizontal or vertical applications.
- B. Fire Dampers: Factory fabricated fire dampers, complete with required hardware and accessories. UL labeled according to UL 555, "Fire Dampers".
- C. Flexible Connectors: Flame retardant or noncombustible fabrics, coatings, and adhesives complying with UL 181, Class 1.
- D. Flexible Ducts: Factory fabricated, insulated, round duct, with an outer jacket enclosing 2 inch thick, glass fiber insulation. R-value: 6.0, around a continuous inner liner.

PART 3 - EXECUTION

3.1 INSTALLATION

- A. Duct System Pressure Class: Construct and install each duct system with 2 inch positive and negative duct pressure-classifications.
- B. Conceal ducts from view in finished and occupied spaces. Except where noted as exposed.
- C. Avoid passing through electrical equipment spaces and enclosures.
- D. Support and connect metal ducts according to SMACNA's "HVAC Duct Construction Standard".
- E. Install duct accessories according to applicable portions of details of construction as shown in SMACNA standards.
- F. Install liner and/or insulation on ductwork per the material schedule on sheet M010.
- G. Install volume control dampers in lined duct with methods to avoid damage to liner and to avoid erosion of duct liner.
- H. Install fire and smoke dampers according to manufacturer's UL approved written instructions.
- I. Install fusible links in fire dampers.
- J. Provide saddle tabs at tees for engaged ductwork.

3.2 TESTING, ADJUSTING, AND BALANCING

- A. The Tenant will supply an independent balance agent to to balance and adjust the HVAC installation. The balance agent will be responsible for any pulley or belt changes required.
- B. The GC is to have trained staffed available during the balancing to correct issues noted by the balance agent.
- C. The balance agent is to balance airflow within distribution systems, including submain, branches, and terminals to indicated quantities +/- 10%. The hood exhaust system shall be balanced to a tolerance of -0-10% and the make-up air system to a tolerance of -10-0%.
- D. The balance agent is to supply a copy of the balance report to the Tenant, engineer and general contractor for review.

END OF SECTION 15810

SECTION 15855 - DIFFUSERS, REGISTERS, AND GRILLES

PART 1 - GENERAL

1.1 SECTION REQUIREMENTS

A. Submittals: None

PART 2 - PRODUCTS

2.1 OUTLETS AND INLETS

- A. All air terminal devices:
 - 1. Refer to Grills, Registers, and Diffusers Schedule for equipment schedule
 - 2. Manufacturer: As scheduled (NO SUBSTITUTION)
 - 3. Material: As scheduled.
 - 4. Finish: As scheduled.
 - 5. Mounting: As scheduled.

PART 3 - EXECUTION

3.1 INSTALLATION

- A. Coordinate location and installation with duct installation and installation of other ceiling and wall mounted items.
- B. Locate ceiling diffusers, registers, and grilles, as indicated on the architectural "reflected ceiling plans." Unless otherwise indicated, locate units in center of acoustical ceiling panels.

END OF SECTION 15855

HVAC GENERAL NOTES

- A. GENERAL NOTES APPLY TO HVAC SHEETS.
- B. WORK SHALL COMPLY WITH STATE AND LOCAL CODE REQUIREMENTS AS APPROVED AND AMENDED BY THE AUTHORITY HAVING JURISDICTION INCLUDING APPLICABLE SECTIONS OF NFPA, THE MECHANICAL CODE, AND ANY INTERIM AMENDMENTS AT THE TIME OF THE PROPOSAL. PURCHASE PERMITS ASSOCIATED WITH THE WORK. OBTAIN INSPECTIONS REQUIRED BY CODE. SEE ARCHITECTURAL SHEETS FOR THE RESUMING CODES.
- C. CONTRACTOR AND SUBCONTRACTORS SHALL REVIEW COMPLETE SET OF THE CONSTRUCTION DOCUMENTS, COORDINATE WORK WITH THE WORK OF OTHER TRADES, EQUIPMENT FURNISHED BY OTHERS, REQUIREMENTS OF THE OWNER, AND OF THE EXISTING CONDITIONS AT THE PROJECT SITE.
- D. DRAWINGS FOR THE MECHANICAL WORK ARE DIAGNOSTIC, SHOWING THE GENERAL LOCATION, TYPE, LAYOUT, AND EQUIPMENT REQUIRED. THE DRAWING SHALL NOT BE SCALED FOR DUCT MEASUREMENTS. REFER TO ARCHITECTURAL DRAWINGS FOR DIMENSIONS, REFER TO MANUFACTURERS STANDARD INSTALLATION DRAWINGS FOR EQUIPMENT CONNECTIONS AND INSTALLATION REQUIREMENTS. PROVIDE DUCTWORK, CONNECTIONS, OFFSETS, ACCESSORIES, AND MATERIALS NECESSARY FOR A COMPLETE SYSTEM.
- F. DUCT DIMENSIONS ON PLANS INDICATE DIMENSIONS OF INTERNAL FREE AREA.
- G. PERFORATED CEILING DIFFUSERS SHALL BE 4"MIN UNLESS NOTED OTHERWISE.
- H. COORDINATE ROOF WORK WITH THE OWNER'S CONSTRUCTION MANAGER PRIOR TO CONSTRUCTION.
- I. UNLESS NOTED OTHERWISE RECTANGULAR DUCT ELBOWS GREATER THAN 45° SHALL BE MITERED ELBOWS WITH DOUBLE THICKNESS TURNING VANES AND RECTANGULAR DUCT ELBOWS 45° OR LESS SHALL BE RADIUSSED ELBOWS WITH AN INSIDE RADIUS OF AT LEAST 1/2 THE WIDTH OF THE DUCT.
- J. REPLACE AIR FILTERS WITH NEW CLEAN MEDIA AIR FILTERS AT UPWARD.
- K. THE TERM "FURNISH" MEANS SUPPLY AND DELIVER TO THE PROJECT SITE, READY FOR UNLOADING, UNPACKING, ASSEMBLY, INSTALLATION, AND SIMILAR OPERATIONS. THE TERM "INSTALL" DESCRIBES THE OPERATIONS AT THE PROJECT SITE INCLUDING THE ACTUAL UNLOADING, UNPACKING, ASSEMBLY, ERECTING, PLACING, ANCHORING, APPLYING, WORKING TO DIMENSION, FINISHING, CURING, PROTECTING, CLEANING, AND SIMILAR OPERATIONS. THE TERM "PROVIDE" MEANS TO FURNISH AND INSTALL, COMPLETE AND READY FOR THE INTENDED USE.
- L. PROVIDE LABELING CALLED FOR IN THE HVAC DRAWINGS USING ENGRAVED PHENOLIC PLATES.
- M. PROVIDE PROOF TO CALL UNSTRUT WITHIN FRAME FOR DUCT SUPPORTS AND OTHER UNSTRUTTED AREAS EXPOSED TO VIEW. SLOTTED UNSTRUT AND OTHER UNSTRUT WITH HOLES IS NOT ACCEPTABLE.

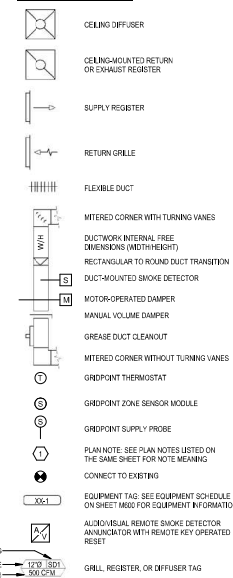
HVAC MATERIAL SCHEDULE

CATEGORY	APPLICATION	ALLOWABLE MATERIAL
DUCT	CONCEALED, RETURN	RECT. OR ROUND AS SHOWN, LINED OR INSULATED
	CONCEALED, SUPPLY	RECT. OR ROUND AS SHOWN, LINED OR INSULATED
	CONCEALED, TYPE I HOOD EXHAUST	RECTANGULAR IS GAL. BLACK IRON W/ WRAP OR UL 1978 FACTORY MANUFACTURED DUCT W/ WRAP (SUBMIT SHOP DRAWINGS FOR FACTORY MANUFACTURED DUCT PRIOR TO ORDERING FOR APPROVAL)
	EXPOSED GENERAL EXHAUST	RECTANGULAR, NO EXPOSED DUCT SEALING MASTIC
	EXPOSED RETURN	RECTANGULAR, NO EXPOSED DUCT SEALING MASTIC
	EXPOSED SUPPLY	RECT. LINED OR ROUND AS SHOWN, NO EXPOSED DUCT SEALING MASTIC

IEI ABBREVIATIONS

AB	EXISTING
ABV	ABOVE
ACN	AMERICANS WITH DISABILITIES ACT
AFB	ABOVE FINISHED FLOOR
AFG	ABOVE FINISHED GRADE
AHJ	AUTHORITY HAVING JURISDICTION
BFF	BELOW FINISHED FLOOR
BFG	BELOW FINISHED GRADE
BOH	BACK OF HOUSE
CEB	CEILING
CIC	CONNECT TO EXISTING
CIE	CEILING
DO	DOOR
EXTG	EXISTING
FLR	FLOOR
FOH	FRONT OF HOUSE
OPB	OUTSIDE BOARD
NTS	NOT TO SCALE
OH	OVERHEAD
OPD	OPPOSED BLADE DAMPER
TYP	TYPICAL
UG	UNDERGROUND
UNK	UNLESS NOTED OTHERWISE
VFD	VARIABLE FREQUENCY DRIVE
VSC	VARIABLE SPEED CONTROLLER
WFA	WALK-IN FREEZER
WAL	WALK-IN COOLER
WCAS	TENANT'S CO ALARM SUPPLIER
GC	GENERAL CONTRACTOR
IES	TENANT'S HVAC EQUIPMENT SUPPLIER
HS	TENANT'S HOOD SUPPLIER
KES	TENANT'S KITCHEN EQUIPMENT SUPPLIER
LL	LANDLORD
TAB	TENANT'S TEST AND BALANCE VENDOR
TCC	TENANT'S CABLING CONTRACTOR
TCO	TENANT'S DUCT CLEANER
TMB	TENANT'S ENERGY MANAGEMENT SYSTEM SUPPLIER
TLS	TENANT'S LIGHT/LAMP SUPPLIER
TMB	TENANT'S MENU BOARD SUPPLIER
TMS	TENANT'S MILLWORK SUPPLIER
TP	TENANT'S PEX/KE SUPPLIER
TRV	TENANT'S RAILING SUPPLIER
TSV	TENANT'S TIE-BACK VENDOR
UV	TENANT'S UV SANITIZER SUPPLIER
TUC	TENANT'S WALK-IN COOLER SUPPLIER
WH	TENANT'S WATER HEATER SUPPLIER

HVAC SYMBOLS



Consultant:

Gausman & Moore

A Division of
AMRES
Mechanical and Electrical Engineers
1700 West Highway 36 • Suite 700
Roseville, Minnesota 55113
(651) 634-0606 Fax: (651) 634-0618
Project No. 81-0498

I HEREBY CERTIFY THAT THE PLAN, SPECIFICATIONS, CONTRACT AND PERMITS BY THE OFFICE OF THE CITY ENGINEER AND THE CITY ENGINEER'S OFFICE, PROFESSIONAL ENGINEER UNDER THE LAWS OF THE STATE OF MINNESOTA.
PRINT NAME: JAMES D. MANNING III
DATE: 12/21/2022 12:21 PM 18261

COPYRIGHT 2022
THIS DRAWING IS AN INSTRUMENT OF SERVICE AND AS SUCH REMAINS THE PROPERTY OF CHIPOTLE MEXICAN GRILL, INC. PERMISSION TO USE OF THIS DOCUMENT IS LIMITED AND CAN BE REVOKED BY A WRITTEN AGREEMENT WITH CHIPOTLE MEXICAN GRILL, INC.



CHIPOTLE MEXICAN GRILL, INC.
PO BOX 25256
COLUMBIA, OH 43212-2526
800.333.2600
www.chipotle.com

STORE NO.: 4660
"NORTH BRANCH"
HWY 95 & FLINK AVE
NORTH BRANCH, MN 55056

Issue Record:
12/21/2022 PERMIT SET

Revisions:

Drawn: _____ Checked: _____
RJD JDM

Project No.: 81-0498
2022-0155

Comments:
HVAC SPECIFICATIONS

M010

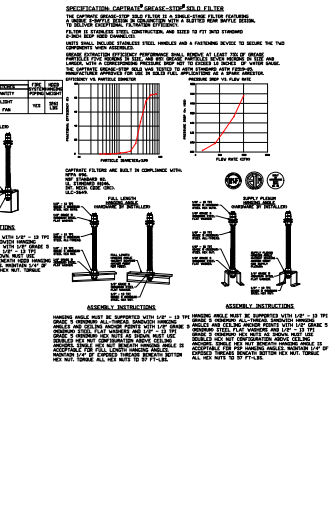
FOR QUESTION CALL THE PROJECT MANAGER AT 612-336-1000

NO.	TYPE	DESCRIPTION	QTY	UNIT	PRICE	TOTAL
1	1	1	1	1	1	1

PERFORMANCE DATA SUMMARY

NO.	TYPE	DESCRIPTION	QTY	UNIT	PRICE	TOTAL
1	1	1	1	1	1	1

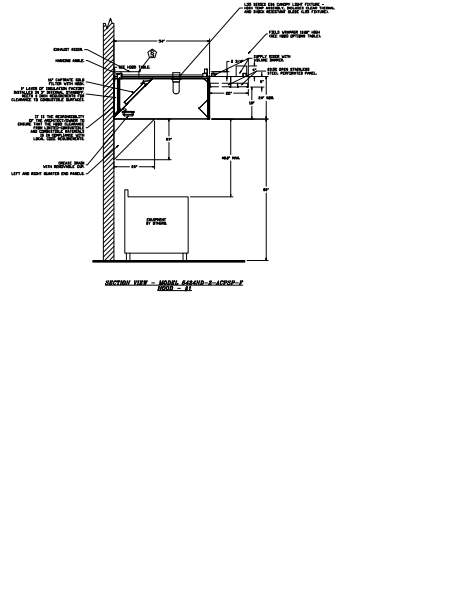
ASHP SHIP'S LOOSE FOR FIELD INSTALLATION



CAPTIVEAIRE

CHIPOTLE NORTH BRANCH #4660
NORTH BRANCH, MN, 55056

DATE: 12/15/2022
SHEET NO. 1



CAPTIVEAIRE

CHIPOTLE NORTH BRANCH #4660
NORTH BRANCH, MN, 55056

DATE: 12/15/2022
SHEET NO. 2

PERFORMANCE DATA SUMMARY

NO.	TYPE	DESCRIPTION	QTY	UNIT	PRICE	TOTAL
1	1	1	1	1	1	1

PERFORMANCE DATA SUMMARY

NO.	TYPE	DESCRIPTION	QTY	UNIT	PRICE	TOTAL
1	1	1	1	1	1	1

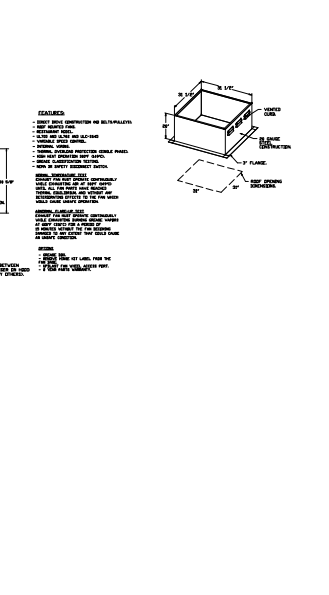
ASSEMBLY INSTRUCTIONS

1. UNPACK THE HOOD UNIT CAREFULLY AND CHECK FOR DAMAGE.

2. THE HOOD SHOULD BE INSTALLED ON A LEVEL SURFACE. ENSURE THE MOTOR AND BLADES ARE PROPERLY ALIGNED.

3. CONNECT THE HOOD TO THE EXHAUST SYSTEM AS SHOWN IN THE DIAGRAMS.

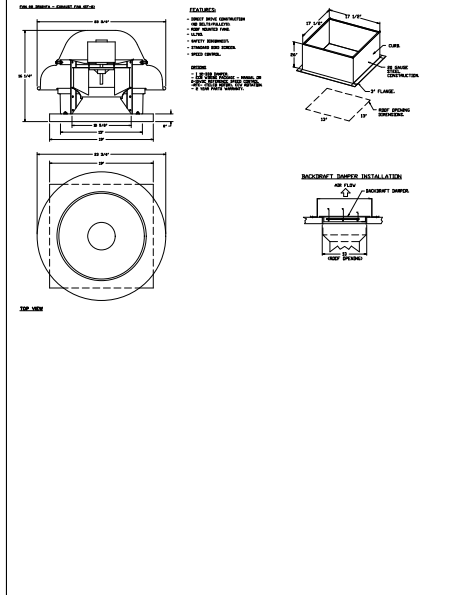
4. ELECTRICAL CONNECTIONS SHOULD BE MADE BY A LICENSED ELECTRICIAN.



CAPTIVEAIRE

CHIPOTLE NORTH BRANCH #4660
NORTH BRANCH, MN, 55056

DATE: 12/15/2022
SHEET NO. 3



CAPTIVEAIRE

CHIPOTLE NORTH BRANCH #4660
NORTH BRANCH, MN, 55056

DATE: 12/15/2022
SHEET NO. 4

Gausman & Moore

A Division of **AYRES**

Mechanical and Electrical Engineers
1700 West Highway 36 • Suite 700
Rooseville, Minnesota 55113
(651) 639-0606 Fax (651) 639-4818
Project No. 81-0438

I HEREBY CERTIFY THAT THIS PLAN WAS PREPARED BY ME OR UNDER MY SUPERVISION AND THAT I AM A LICENSED PROFESSIONAL ENGINEER UNDER THE LAWS OF THE STATE OF MINNESOTA.

PRINT NAME: JAMES D. MOORE
SIGNATURE: [Signature]
DATE: 12/15/2022

COPYRIGHT 2022
THIS DRAWING IS AN INSTRUMENT OF SERVICE AND IS THE PROPERTY OF CHIPOTLE MEXICAN GRILL, INC. PERMISSION FOR USE OF THIS DOCUMENT IS LIMITED AND CAN BE REVOKED BY WRITTEN AGREEMENT WITH CHIPOTLE MEXICAN GRILL, INC.



STORE NO.: 4660
"NORTH BRANCH"
HWY 95 & FLINK AVE
NORTH BRANCH, MN 55056

Issue Record:

NO.	DATE	DESCRIPTION	BY
1	12/15/2022	PERMIT SET	

Drawn: [Blank]
Checked: [Blank]
RD: [Blank]
JDM: [Blank]
Project No: [Blank]
3022-0335
Contract: [Blank]

HOOD DRAWINGS

M701

