



PROFESSIONAL SEAL

**BRiC**  
PARTNERSHIP, LLC  
CONSULTING ENGINEERS

NOW PART OF rtm

3701 S Lindbergh Blvd  
Suite 204,  
St. Louis, MO 63127  
PHONE: 314.725.5889  
MISSOURI CERTIFICATE OF  
AUTHORITY #2014035826

- KEYED NOTES**
- 1 CHILLED WATER PIPING ROUTED THROUGH ATTIC SPACE. SEAL WALL PENETRATIONS THROUGH FIRE WALLS TO MAINTAIN FIRE RATING.
  - 2 SEE MECHANICAL ROOM DETAILS ON M-401
  - 3 NEW CHILLER ON NEW CONCRETE PAD
  - 4 CONNECT EXISTING EXHAUST FAN TO BMS
  - 5 CONNECT EXISTING VAV BOX TO BMS. EXSITING CONTROLLER, WIRING AND TSTAT MAY REMAIN.



OFFICE OF ADMINISTRATION  
DIVISION OF FACILITIES  
MANAGEMENT, DESIGN AND  
CONSTRUCTION  
DEPARTMENT OF  
CORRECTIONS

PROJECT TITLE:  
REPLACE BAS& HVAC

2002 WARREN BARRETT DRIVE  
HANNIBAL, MO

PROJECT # C2010-01

REVISION: 1  
DATE: 09/22/2022  
REVISION:  
DATE:  
REVISION:  
DATE:  
ISSUE DATE: 07/01/2022

CAD DWG FILE:  
DRAWN BY: MRH  
CHECKED BY: MRH  
DESIGNED BY: MRH

SHEET TITLE:  
**MECHANICAL  
FLOORPLAN**

SHEET NUMBER:  
**M-201**

4 OF 13 SHEETS  
7/1/22



PROFESSIONAL SEAL

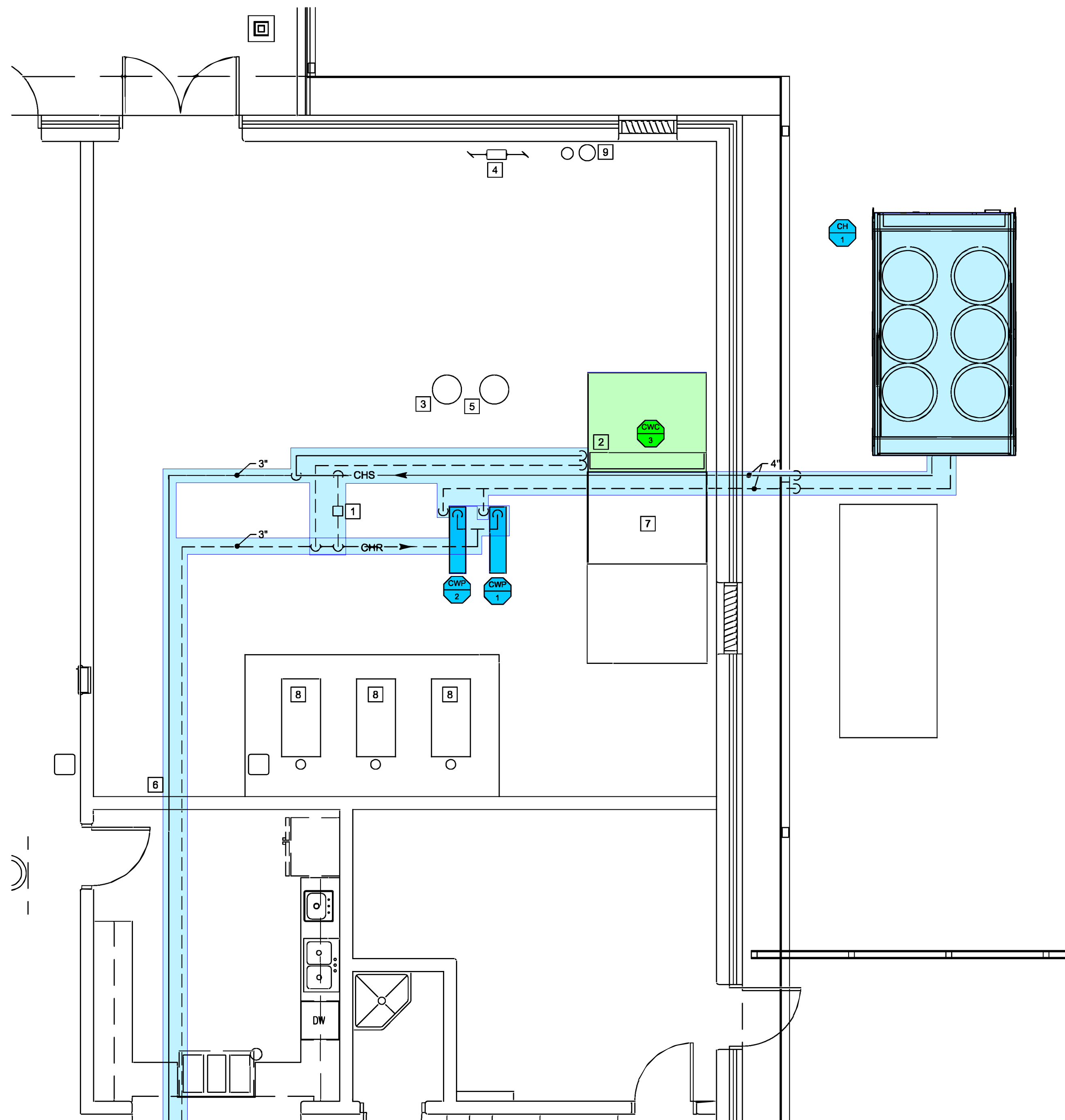
**BRiC**  
PARTNERSHIP, LLC  
CONSULTING ENGINEERS

NOW PART OF rtm

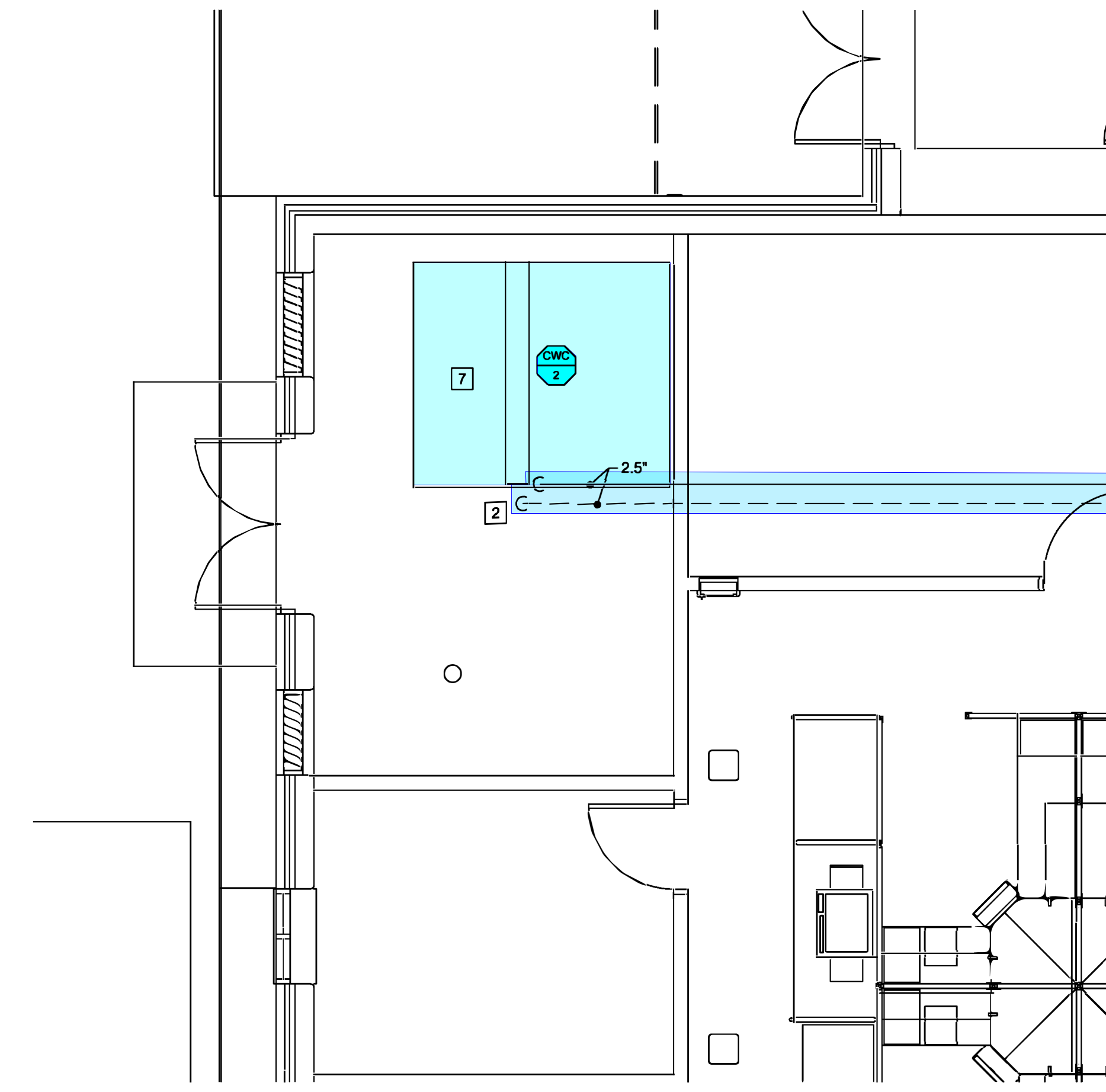
3701 S Lindbergh Blvd  
Suite 204,  
St. Louis, MO 63127  
PHONE: 314.725.5889  
MISSOURI CERTIFICATE OF  
AUTHORITY #2014035826

**KEY NOTES**

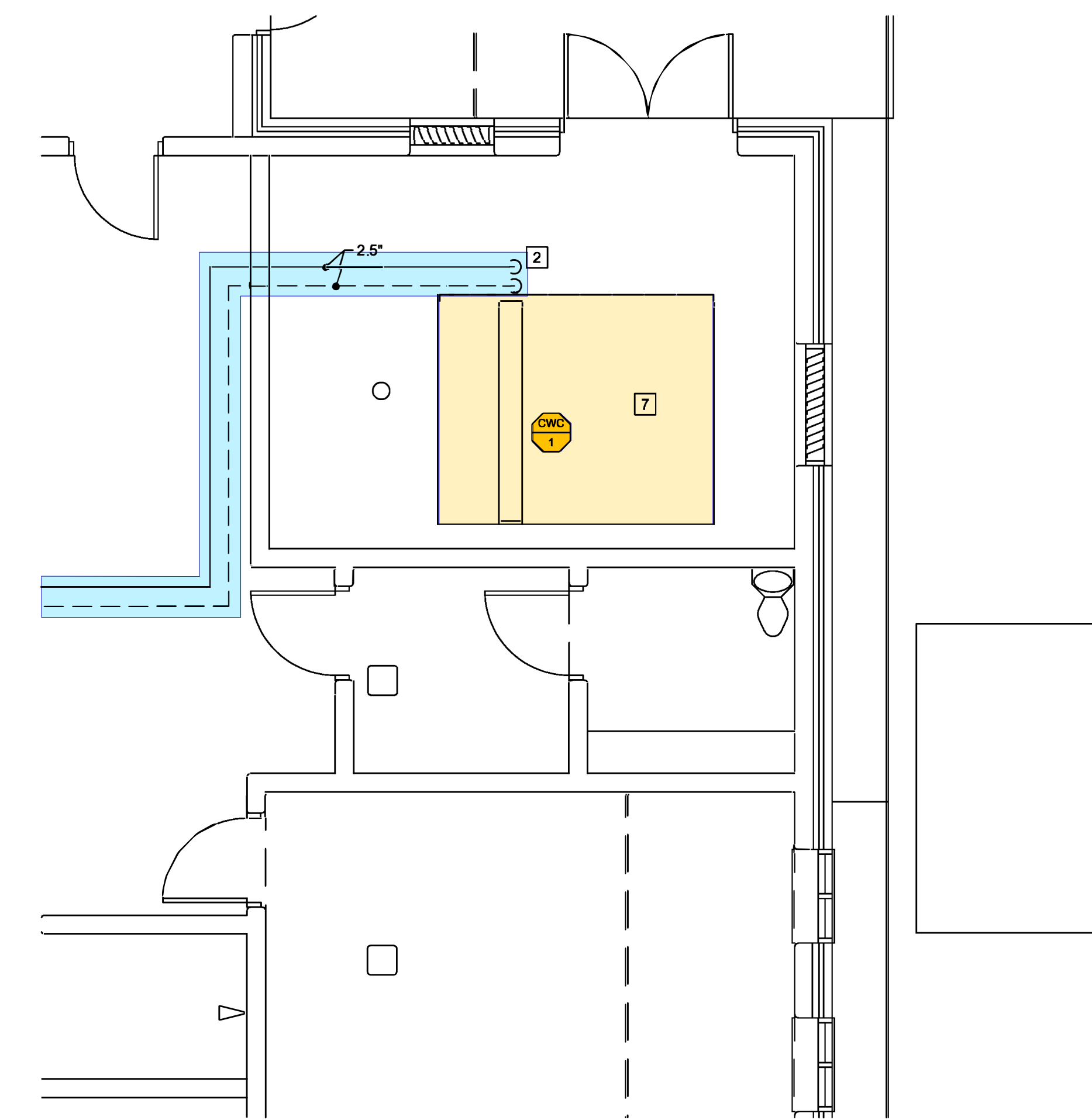
- 1 CHILLED WATER BYPASS WITH MODULATING CONTROL VALVE.
- 2 NEW CHILLED WATER COIL IN EXISTING AHU. SEE DETAIL.
- 3 EXPANSION TANK XT-1. TACO CA90-125 OR EQUAL. SECURE TANK TO EQUIPMENT PAD WITH SEISMIC ANCHORS.
- 4 PROVIDE DEDICATED 3/4" BACKFLOW PREVENTER FOR MECHANICAL MAKEUP WATER. SHALL INCLUDE A 3/4" SHUT OFF BALL VALVE, A 3/4" PRESSURE REDUCING VALVE, A 3/4" WATTS 909 BACKFLOW PREVENTER (OR EQUAL) AND A PRESSURE GAUGE ON THE MECHANICAL DISCHARGE PIPING. TIE INTO EXITING 3" DOMESTIC WATER LINE.
- 5 CHILLED WATER BUFFER TANK. TANK SHALL BE WESSELS MODEL CBT-200 (OR EQUAL) WITH INTERNAL BAFFLE AND TOP AIR VENT CONNECTION. PROVIDE AIR VENT. SECURE TANK TO EQUIPMENT PAD WITH SEISMIC ANCHORS.
- 6 CHILLED WATER PIPING THROUGH WALL INTO ATTIC SPACE.
- 7 EACH AHU WILL REQUIRE NEW BMS CONTROLLER.
- 8 CONNECT EXISTING HW SYSTEM (BOILERS AND PUMPS) TO NEW BMS.
- 9 2 GALLON CHEMICAL POT FEEDER.



ENLARGED MECH RM - MECHANICAL  
SCALE: 1/4" = 1'-0"



ENLARGED PLAN - MECHANICAL  
SCALE: 1/4" = 1'-0"



ENLARGED PLAN - MECHANICAL  
SCALE: 1/4" = 1'-0"

OFFICE OF ADMINISTRATION  
DIVISION OF FACILITIES  
MANAGEMENT, DESIGN AND  
CONSTRUCTION  
DEPARTMENT OF  
CORRECTIONS

PROJECT TITLE:  
REPLACE BAS & HVAC

2002 WARREN BARRETT DRIVE  
HANNIBAL, MO

PROJECT # C2010-01

REVISION: 1  
DATE: 09/22/2022  
REVISION: \_\_\_\_\_  
DATE: \_\_\_\_\_  
REVISION: \_\_\_\_\_  
DATE: \_\_\_\_\_  
ISSUE DATE: 07/01/2022

CAD DWG FILE: \_\_\_\_\_  
DRAWN BY: MRH  
CHECKED BY: MRH  
DESIGNED BY: MRH

SHEET TITLE:  
**ENLARGED  
PLANS -  
MECHANICAL**

SHEET NUMBER:  
**M-401**

5 OF 13 SHEETS  
7/1/22