

Issue List

- Control Method for Bypass
- EF-2 Flow Setpoint
- EF-2 Operation Issues
- FCU F-2 Missing Grille
- FCU F-3 missing damper
- FCU's Not Operational
- FCU-4 Not Installed
- Flow Setpoints for SVAV-2 and SVAV-3
- Missing HEPA Filters
- Missing Return Dampers
- No Access Doors or Door Glass installed
- No Access to damper for SCAV-8 Grille
- No Access to Supply Dampers
- Ports on Discharge side of Pumps
- RCAV-8 Missing Grille / Low Airflow
- Return VAVs Flow Setpoints
- RFI for Airflow Stations
- Test Ports on Chiller
- VAV-1 Low Flow
- VAV-10 Missing Grille
- VAV-9 Missing Dampers



SPCC Aseptic Training Facility (Monroe, NC)

Project Issue Information

Issue Name : Control Method for Bypass
Description : An RFI is required to find a control method for the bypass. A solution could be to install a pressure sensor to modulate the Bypass using differential pressure as Chilled Water Demand changes.
Created By : National TAB **Assigned To :** National TAB - Antonio Flores-De La Cruz
Status : Open
Priority : Urgent **Asset Tag :**
Originated Date : 02/25/2026 - Antonio Flores-De La Cruz - National TAB



SPCC Aseptic Training Facility (Monroe, NC)

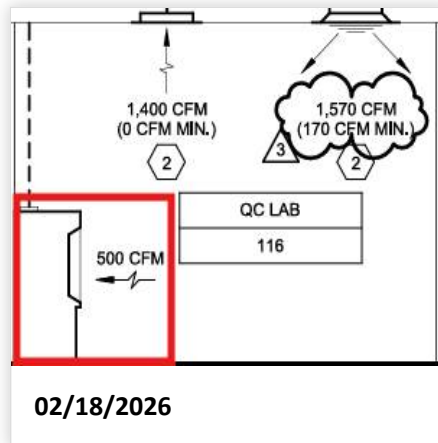
Project Issue Information

Issue Name : EF-2 Flow Setpoint
Description : According to the schedule, EF-2 CFM setpoint is 550 CFM, but the Airflow Diagram shows 500 CFM. Need clarification on the required CFM.
Created By : National TAB **Assigned To :** National TAB - Antonio Flores-De La Cruz
Status : Open
Priority : Urgent **Asset Tag :**
Originated Date : 02/18/2026 - Antonio Flores-De La Cruz - National TAB

Project Issue File Details

EXHAUST FAN SCHEDULE				
NUMBER	SYSTEMSERVING	CFM	SP H2O	FAN TYPE
EF-1	AHU-2/ GMP AREA EXHAUST	880	0.5	CENTRIFUGAL ROOF
EF-2	AHU-1/ QC LAB FUME HOOD	550	2.01	TUBULAR CENTRIFUGAL
EF-3	AHU-1/ JAN '20	220	0.5	CENTRIFUGAL ROOF
EF-4	AUTOCLAVE THINGIE EXHAUST	150	0.5	CENTRIFUGAL ROOF

02/18/2026



Project Issue Response Details

- **02/25/2026 National TAB - Antonio Flores-De La Cruz**
 - An RFI is needed to clarify how the bypass operates in conjunction with the hood and the VFD: whether the bypass opens to maintain the same flow at the Hood, or if the VFD is used to reduce speed and lower CFM.



SPCC Aseptic Training Facility (Monroe, NC)

Project Issue Information

Issue Name : EF-2 Operation Issues
Description : EF-2 turns on but trips at 50% fan speed. There is no blockage at the fan, and the motorized damper has been verified to open. There is no damper or restriction at the FUME HOOD either. Pressure tubes might be the cause because pressure does not increase when the fan speeds up.

Created By : National TAB **Assigned To :** National TAB - Antonio Flores-De La Cruz

Status : Open

Priority : Urgent **Asset Tag :**

Originated Date : 02/18/2026 - Antonio Flores-De La Cruz - National TAB



SPCC Aseptic Training Facility (Monroe, NC)

Project Issue Information

Issue Name : FCU F-2 Missing Grille
Description : FCU F-2 is missing the supply grille and is covered with plastic.
Created By : National TAB **Assigned To :** National TAB - Antonio Flores-De La Cruz
Status : Open
Priority : Urgent **Asset Tag :**
Originated Date : 02/19/2026 - Antonio Flores-De La Cruz - National TAB

Project Issue File Details



02/19/2026

Project Issue Response Details

- **02/24/2026 National TAB - Antonio Flores-De La Cruz**
 - Balanced without grille.



SPCC Aseptic Training Facility (Monroe, NC)

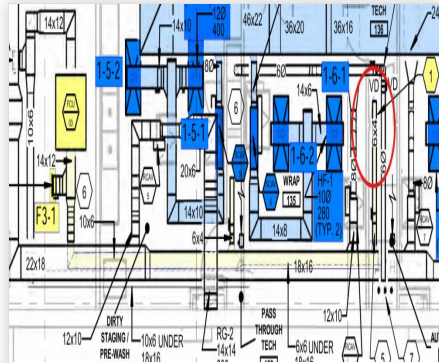
Project Issue Information

Issue Name : FCU F-3 missing damper
Description : Grille in AUTOCLAVE 137 for FCU F-3 is missing the OBD balancing damper. Also awaiting the Engineer's confirmation of increasing the grille from 50 CFM to 100 CFM, per the meeting on 2/19/2026.
Created By : National TAB
Assigned To : National TAB - Antonio Flores-De La Cruz
Status : Open
Priority : Urgent
Asset Tag :
Originated Date : 02/23/2026 - Antonio Flores-De La Cruz - National TAB

Project Issue File Details



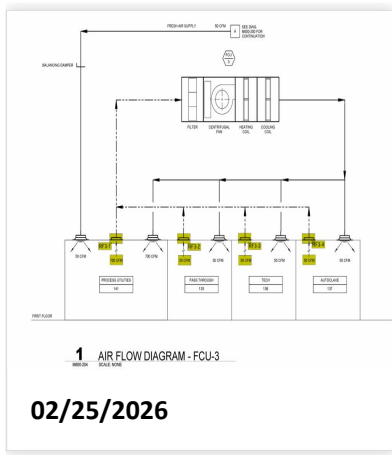
02/23/2026



02/23/2026

Project Issue Response Details

- **02/25/2026 National TAB - Antonio Flores-De La Cruz**
 - All supply and return grilles need dampers. Also, an RFI is needed to determine the new diffuser values. The actual installation does not match the design and needs clarification.





SPCC Aseptic Training Facility (Monroe, NC)

Project Issue Information

Issue Name : FCU's Not Operational
Description : Controls stated that FCU's program to control is not currently loaded.
Created By : National TAB **Assigned To :** National TAB - Antonio Flores-De La Cruz
Status : Open
Priority : **Urgent** **Asset Tag :**
Originated Date : 02/17/2026 - Antonio Flores-De La Cruz - National TAB

Project Issue File Details



02/17/2026

Project Issue Response Details

- **02/23/2026 National TAB - Antonio Flores-De La Cruz**
 - FCUs 1 and 2 are running, and FCU 3 will be running on 2/24/2026, according to FSS.



SPCC Aseptic Training Facility (Monroe, NC)

Project Issue Information

Issue Name : FCU-4 Not Installed
Description : FCU-4 is not installed.
Created By : National TAB **Assigned To :** National TAB - Antonio Flores-De La Cruz
Status : Open
Priority : Urgent **Asset Tag :**
Originated Date : 02/17/2026 - Antonio Flores-De La Cruz - National TAB

Project Issue File Details



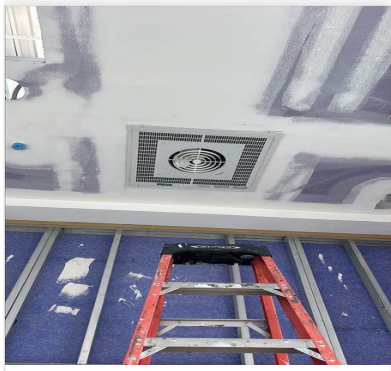
02/17/2026



02/17/2026

Project Issue Response Details

- **02/23/2026 National TAB - Antonio Flores-De La Cruz**
 - Installed, just needs to be wired by electricians.



02/23/2026



SPCC Aseptic Training Facility (Monroe, NC)

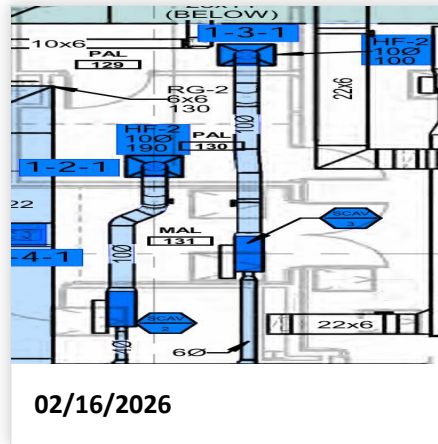
Project Issue Information

Issue Name : Flow Setpoints for SVAV-2 and SVAV-3
Description : SVA-2 and SVAV-3 do not match based on the schedule and connected load CFM values. Need clarification on what is required.
Created By : National TAB **Assigned To :** National TAB - Antonio Flores-De La Cruz
Status : Open
Priority : Urgent **Asset Tag :**
Originated Date : 02/16/2026 - Antonio Flores-De La Cruz - National TAB

Project Issue File Details

TERMINAL AIR UNIT W/ ELECTRIC REHEAT SCHEDULE				
NUMBER	SYSTEMSERVING	CFM		INLET SIZE (IN)
		MIN	MAX	
SVAV-1	AHU-1 / CLRMS 117	680	1700	12
SCAV-1A	AHU-1 / CLEAN ROOM TRAINING 134	650	1870	14
SCAV-1B	AHU-1 / CLEAN ROOM TRAINING 134	650	1870	14
SCAV-1C	AHU-1 / CLEAN ROOM TRAINING 134	650	1870	14
SCAV-2	AHU-1 / PAL 129	60	100	4
SCAV-3	AHU-1 / PAL 130	60	190	4
SCAV-4	AHU-1 / MAL 131	80	150	4

02/16/2026



Project Issue Response Details

- **02/25/2026 National TAB - Antonio Flores-De La Cruz**
 - IPS has returned the RFI to us, stating that we should switch the SCAV box tags and continue with the flows. Controls should change them and confirm completion with TAB.



SPCC Aseptic Training Facility (Monroe, NC)

Project Issue Information

Issue Name : Missing HEPA Filters
Description : The clean rooms' diffusers do not have HEPA Filters installed.
Created By : National TAB **Assigned To :** National TAB - Antonio Flores-De La Cruz
Status : Open
Priority : Urgent **Asset Tag :**
Originated Date : 02/23/2026 - Antonio Flores-De La Cruz - National TAB

Project Issue File Details



02/23/2026

UNIT	ISSUE	ISSUE	ISSUE	ISSUE	ISSUE	ISSUE	ISSUE	ISSUE	ISSUE	ISSUE	ISSUE	ISSUE
01	MISSING HEPA FILTERS	REPAIR	REPAIR	REPAIR	REPAIR	REPAIR	REPAIR	REPAIR	REPAIR	REPAIR	REPAIR	REPAIR
02	MISSING HEPA FILTERS	REPAIR	REPAIR	REPAIR	REPAIR	REPAIR	REPAIR	REPAIR	REPAIR	REPAIR	REPAIR	REPAIR

1. VERIFY THE LOCATION OF THE MISSING HEPA FILTERS
 2. VERIFY THE LOCATION OF THE MISSING HEPA FILTERS
 3. VERIFY THE LOCATION OF THE MISSING HEPA FILTERS
 4. VERIFY THE LOCATION OF THE MISSING HEPA FILTERS
 5. VERIFY THE LOCATION OF THE MISSING HEPA FILTERS
 6. VERIFY THE LOCATION OF THE MISSING HEPA FILTERS

02/23/2026



SPCC Aseptic Training Facility (Monroe, NC)

Project Issue Information

Issue Name : Missing Return Dampers
Description : RCAVs: 1, 1A, 1B, 1C, 9,10 are missing dampers to balance the box with multiple return grilles.
Created By : National TAB **Assigned To :** National TAB - Antonio Flores-De La Cruz
Status : Open
Priority : Urgent **Asset Tag :**
Originated Date : 02/23/2026 - Antonio Flores-De La Cruz - National TAB



SPCC Aseptic Training Facility (Monroe, NC)

Project Issue Information

Issue Name : No Access Doors or Door Glass installed
Description : Access doors and door glass are not installed. Unable to pressure test and balance the return until installed.

Created By : National TAB **Assigned To :** National TAB - Antonio Flores-De La Cruz

Status : Open
Priority : Urgent **Asset Tag :**

Originated Date : 02/23/2026 - Antonio Flores-De La Cruz - National TAB

Project Issue File Details



02/23/2026



SPCC Aseptic Training Facility (Monroe, NC)

Project Issue Information

Issue Name : No Access to Supply Dampers
Description : CLEAN ROOM TRAINING 134 has a hard ceiling and no access to the dampers to balance the supply. Access is required or cable dampers to balance.
Created By : National TAB **Assigned To :** National TAB - Antonio Flores-De La Cruz
Status : Open
Priority : Urgent **Asset Tag :**
Originated Date : 02/23/2026 - Antonio Flores-De La Cruz - National TAB

Project Issue File Details



02/23/2026



02/23/2026



02/23/2026



SPCC Aseptic Training Facility (Monroe, NC)

Project Issue Information

Issue Name : Ports on Discharge side of Pumps
Description : There are no discharge ports on the discharge side of the pumps. It is required to be installed to TAB the pumps.
Created By : National TAB **Assigned To :** National TAB - Antonio Flores-De La Cruz
Status : Open
Priority : Urgent **Asset Tag :**
Originated Date : 02/25/2026 - Antonio Flores-De La Cruz - National TAB



SPCC Aseptic Training Facility (Monroe, NC)

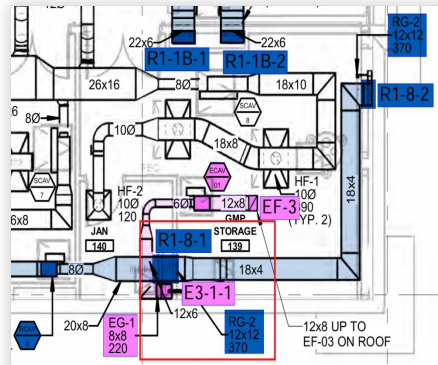
Project Issue Information

Issue Name : RCAV-8 Missing Grille / Low Airflow
Description : RCAV-8 is missing a grille. The VAV box is calibrated and can only achieve 640 CFM at 100% open damper. The rectangular duct attached to the grille appears to be sized for the 370 CFM design.
Created By : National TAB
Assigned To : National TAB - Antonio Flores-De La Cruz
Status : Open
Priority : Urgent
Asset Tag :
Originated Date : 02/25/2026 - Antonio Flores-De La Cruz - National TAB

Project Issue File Details



02/25/2026



02/25/2026



SPCC Aseptic Training Facility (Monroe, NC)

Project Issue Information

Issue Name : Return VAVs Flow Setpoints
Description : Schedule flow setpoints do not match connected load CFM values for Return VAVs: RCAV-1A, RCAV-1B, RCAV-1C, RCAV-2, RCAV-3, RCAV-8, RCAV-9. Clarification is required to properly set the VAV.
Created By : National TAB **Assigned To :** National TAB - Antonio Flores-De La Cruz
Status : Open
Priority : Urgent **Asset Tag :**
Originated Date : 02/18/2026 - Antonio Flores-De La Cruz - National TAB

Project Issue File Details

TERMINAL AIR UNIT SCHEDULE				
NUMBER	SYSTEMSERVING	CFM		INLET SIZE (IN)
		MIN	MAX	
RVAV-1	AHU-1 / FLEX LAB 117	680	1700	14
RCAV-1A	AHU-1 / BALLROOM TRAINING 134	267	1490	12
RCAV-1B	AHU-1 / BALLROOM TRAINING 134	267	1490	12
RCAV-1C	AHU-1 / BALLROOM TRAINING 134	266	1480	12
RCAV-2	AHU-1 / PAL 129	60	100	4
RCAV-3	AHU-1 / PAL 130	30	160	4
RCAV-4	AHU-1 / MAL 131	120	190	4
RCAV-5	AHU-1 / DIRTY STAGING/PREWASH 132	270	800	8
RCAV-6	AHU-1 / WRAP 135	190	560	8
RCAV-7	AHU-1 / CLEAN EQUIPMENT 138	350	770	8
RCAV-8	AHU-1 / GMP STORAGE 139	290	820	8
RCAV-9	AHU-1 / QC LAB 116	0	1900	14
RCAV-10	AHU-1 / MICRO LAB 115	1060	2160	14
ECAV-01	EF-03 / JANITORS CLOSET 140	140	220	6

02/18/2026

- 1. RCAV-1A
 - 1. 1490 CFM Schedule
 - 2. 1680 CFM Drawings
- 2. RCAV-1B
 - 1. 1490 CFM Schedule
 - 2. 1680 CFM Drawings
- 3. RCAV-1C
 - 1. 1480 CFM Schedule
 - 2. 1680 CFM Drawings
- 4. RCAV-2
 - 1. 100 CFM Schedule
 - 2. 130 CFM Drawings
- 5. RCAV-3
 - 1. 160 CFM Schedule
 - 2. 100 CFM Drawings
- 6. RCAV-8
 - 1. 820 CFM Drawings
 - 2. 740 CFM Schedule
- 7. RCAV-9
 - 1. 1400 CFM Drawings
 - 2. 1900 CFM Schedule

02/18/2026



SPCC Aseptic Training Facility (Monroe, NC)

Project Issue Information

Issue Name : RFI for Airflow Stations
Description : An RFI is needed to clarify whether Flow Stations will be installed on both supply and return ducts.
Created By : National TAB **Assigned To :** National TAB - Antonio Flores-De La Cruz
Status : Open
Priority : Urgent **Asset Tag :**
Originated Date : 02/25/2026 - Antonio Flores-De La Cruz - National TAB



SPCC Aseptic Training Facility (Monroe, NC)

Project Issue Information

Issue Name : Test Ports on Chiller
Description : Test ports are required on the chiller to read pressure and set flow.
Created By : National TAB **Assigned To :** National TAB - Antonio Flores-De La Cruz
Status : Open
Priority : Urgent **Asset Tag :**
Originated Date : 02/25/2026 - Antonio Flores-De La Cruz - National TAB



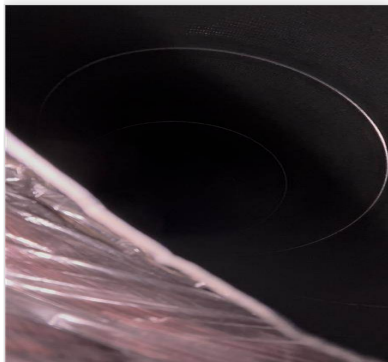
SPCC Aseptic Training Facility (Monroe, NC)

Project Issue Information

Issue Name : VAV-1 Low Flow
Description : At 100% open damper at VAV, max flow is only (817 CFM ACTUAL / 1100 CFM DESIGN). K factor is 986. Pressure goes up to 0.65" wc. VAV box is 10". No obstruction is found to limit flow to the box. Ductwork should be inspected.
Created By : National TAB **Assigned To :** National TAB - Antonio Flores-De La Cruz
Status : Open
Priority : Urgent **Asset Tag :**
Originated Date : 02/19/2026 - Antonio Flores-De La Cruz - National TAB

Project Issue Response Details

- **02/25/2026 National TAB - Antonio Flores-De La Cruz**
 - To verify the interior structure of the duct, a small incision was made in the flex to view the portion hidden by the wall leading into the room. It is believed that the path the duct follows restricts airflow due to the transition from the duct to the flex and to the VAV. This is not a straight path and could add resistance. Also, it appears that a portion of the hard duct has been bent inwards, as shown in the attached picture, and is no longer circular.



02/25/2026



SPCC Aseptic Training Facility (Monroe, NC)

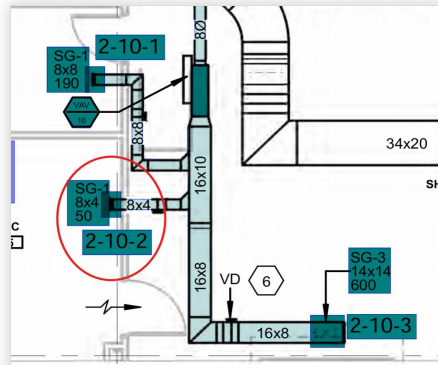
Project Issue Information

Issue Name : VAV-10 Missing Grille
Description : Grille 2-10-2 in ELEC 125 is not installed to balance. Total Flow was set in the meantime
Created By : National TAB **Assigned To :** National TAB - Antonio Flores-De La Cruz
Status : Open
Priority : Urgent **Asset Tag :**
Originated Date : 02/19/2026 - Antonio Flores-De La Cruz - National TAB

Project Issue File Details



02/19/2026



02/19/2026

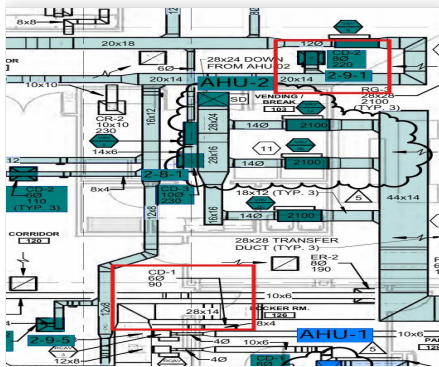


SPCC Aseptic Training Facility (Monroe, NC)

Project Issue Information

Issue Name : VAV-9 Missing Dampers
Description : Supply Diffuser in LOCKER RM 126 does not have a damper installed, as well as diffuser 2-9-1. 2-9-1 ductwork is also pinched and needs to be corrected.
Created By : National TAB
Assigned To : National TAB - Antonio Flores-De La Cruz
Status : Open
Priority : Urgent
Asset Tag :
Originated Date : 02/24/2026 - Antonio Flores-De La Cruz - National TAB

Project Issue File Details



02/24/2026



02/24/2026



02/24/2026