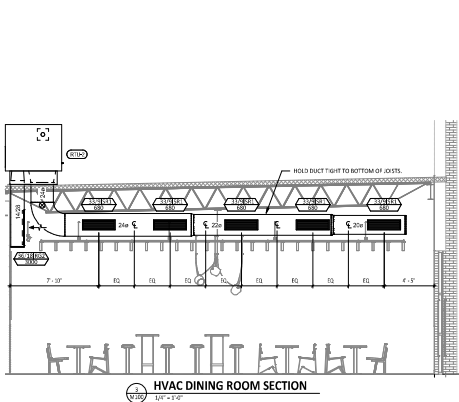
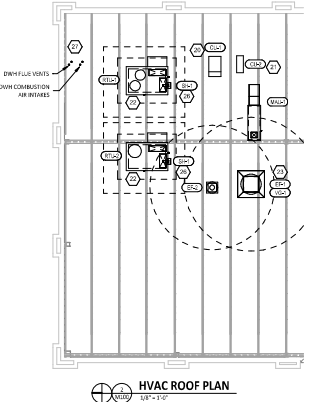


HVAC PLAN NOTES

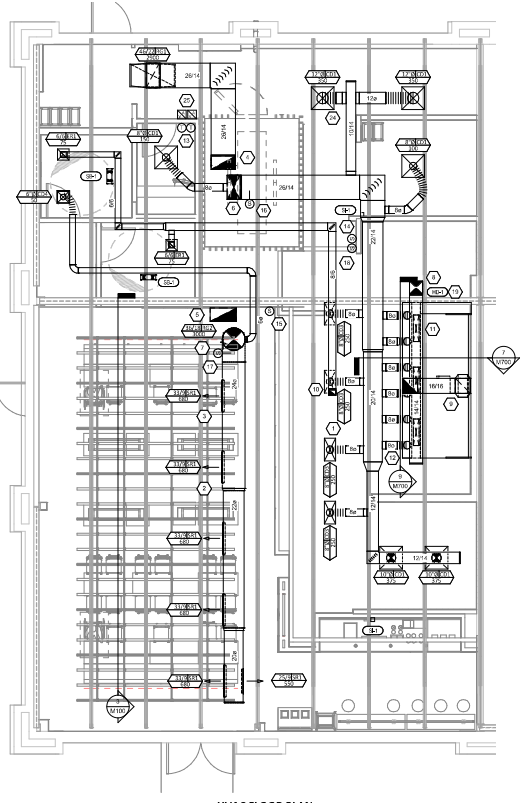
- SEE ARCHITECTURAL REFLECTED CEILING PLAN FOR CEILING MOUNTED EQUIPMENT LOCATION TYPICAL.
- PAINT DUCTWORK VISIBLE THROUGH CEILING ROOM SUPPLY REGISTERS AND RETURN GRILL BLACK TYPICAL.
- ADJUST SUPPLY REGISTERS TO FLOW SUPPLY AIR TO WALL ON OPPOSITE SIDE OF ROOM AT APPROXIMATELY 7' AIR WITH NO GRILLS FELT IN THE DINING ROOM.
- 24" DIA. DUCT UP FOR TRANSITION TO RTU-1 RETURN CONNECTION IN ROOF CURB. RTU-1 SHALL HAVE AN "N" LEGAL SMOKE DETECTOR MOUNTED IN THE RETURN AIR STREAM. INSTALL SMOKE DETECTOR TO RTU-1 OPERATION.
- 24" DIA. DUCT UP FOR TRANSITION TO RTU-2 RETURN CONNECTION IN ROOF CURB. RTU-2 SHALL HAVE AN "N" LEGAL SMOKE DETECTOR MOUNTED IN THE RETURN AIR STREAM. INSTALL SMOKE DETECTOR TO RTU-2 OPERATION.
- 24" DIA. DUCT UP FROM BUILDING SUPPLY THROUGH ROOF. TRANSITION TO RTU-1 SUPPLY CONNECTION IN ROOF CURB.
- 24" DIA. DUCT UP FROM BUILDING SUPPLY THROUGH ROOF. TRANSITION TO RTU-2 SUPPLY CONNECTION IN ROOF CURB.
- 18" DIA. DUCT UP FROM ROOF. TRANSITION TO RTU-1 SUPPLY CONNECTION IN ROOF CURB.
- 18" DIA. DUCT UP FROM ROOF. TRANSITION TO RTU-2 SUPPLY CONNECTION IN ROOF CURB.
- 18" DIA. DUCT UP FROM ROOF THROUGH ROOF TO BE "COMPLIANT" WITH NFPA 96. PROVIDE RAISED ELBOWS WITH AN INSIDE RADIUS OF 0.5W AT ELBOWS IN GREASE DUCT.
- 8" DIA. DUCT UP THROUGH ROOF TO RTU-1.
- 20" DIA. DUCT DOWN TO BRANCH AIR PIP DUCT CONNECTION. TRANSITION TO SUPPLY PLenum CHIMNEY. SEE TYPICAL FOR 3.
- 8" DIA. DUCT DOWN TO AC PIP DUCT CONNECTION. TRANSITION TO SUPPLY PLenum CHIMNEY. SEE TYPICAL FOR CONNECTIONS.
- INSTALL 1/2" DIA. GANG VERTICAL "BOX JOIST" TYPE HOOD SYSTEMS FURNISHED BY TEMS FOR RTU-1 AND RTU-2 AT THIS LOCATION AT 4" AIR. COORDINATE WITH ELECTRICAL WIRING IN THE AREA. PROVIDE WIRING AS SHOWN IN DETAIL B/E/T/S.
- INSTALL ERIDONT ZONE SENSOR MODULE FURNISHED BY TEMS FOR RTU-1 AT THIS LOCATION 2" AIR DIRECTLY TO WALL (NO JUNCTION BOX). COORDINATE LOCATION WITH EQUIPMENT. PROVIDE WIRING AS SHOWN IN DETAIL B/E/T/S.
- INSTALL ERIDONT ZONE SENSOR MODULE FURNISHED BY TEMS FOR RTU-2 AT THIS LOCATION 2" AIR DIRECTLY TO WALL (NO JUNCTION BOX). COORDINATE LOCATION WITH EQUIPMENT. PROVIDE WIRING AS SHOWN IN DETAIL B/E/T/S.
- INSTALL ERIDONT ZONE SENSOR MODULE FURNISHED BY TEMS FOR RTU-1 IN THE SUPPLY DUCTWORK UPSTREAM FROM THE FIRST BRANCH CONNECTION. PROVIDE WIRING AS SHOWN IN DETAIL B/E/T/S.
- INSTALL ERIDONT ZONE SENSOR MODULE FURNISHED BY TEMS FOR RTU-2 IN THE SUPPLY DUCTWORK UPSTREAM FROM THE FIRST BRANCH CONNECTION. PROVIDE WIRING AS SHOWN IN DETAIL B/E/T/S.
- INSTALL KITCHEN TEMPERATURE SENSOR FOR HOOD HD-1 AT THIS LOCATION. 2" AIR. COORDINATE LOCATION WITH EQUIPMENT. PROVIDE (2) #18 G. THERMISTOR CABLE FROM TEMPERATURE SENSOR TO HOOD CONTROL PANEL.
- INSTALL KITCHEN HOOD HD-1 SUPPORT HOOD PER MANUFACTURER'S INSTALLATION INSTRUCTIONS AND AS DETAILED IN THE ARCHITECTURAL AND STRUCTURAL DRAWINGS. INSTALL HOOD ACCORDING TO THE REQUIREMENTS OF ITS LISTING. IN COMPLIANCE WITH NFPA 96, THE BUILDING CODE, AND AUTHORIZED HAVING JURISDICTION. HOOD SHALL HAVE AN INTEGRAL DUCT CLEAR TEMPERATURE SENSOR TO AUTOMATICALLY TRIP THE EXHAUST AND MAKEUP AIR FLOW. COOKING TEMPERATURES ARE DETECTED. EXHAUST DUCT SYSTEM TO BE WELDED OR FACTORY MANUFACTURED WATER AND AIR TIGHT. INSTALL CLEANOUTS PER CODE AND AS SHOWN. INSTALL HOOD PER DETAILS J, K AND L W/NO. CHIPOTLE WILL PROVIDE AN "INTERNOOT" TESTING AGENCY FOR TESTING THE INTEGRITY OF THE EXHAUST DUCT SYSTEM.
- INSTALL MAKEUP CONDENSING UNIT FOR MAKE-UP COOLER ON ROOF AS DETAILED IN THE ARCHITECTURAL AND STRUCTURAL DRAWINGS. INSTALL REFRIGERANT LINE SET, THERMOSTATIC EXPANSION VALVE, SOLENOID VALVE, TEMPERATURE CONTROL, SIGHT GLASS, FETTER DRAIN, PRESSURE CONTROL, LOW AMBIENT CONTROL, AND MAKEUP REFRIGERANT HOODING. TRIP AND LOCK REFRIGERANT LINE PER MANUFACTURER'S RECOMMENDATIONS. INSTALLER SHALL COMPLY WITH ASHRAE 15 STANDARD 15. INSTALL THE REFRIGERANT LINE SET UNDER THE ROOF DECK TO WITHIN 3" OF THE CONDENSING UNIT. CUT 2.312" HOLE IN WALK-IN COOLER ROOF FOR REFRIGERANT LINE SET AND GAS. PER THE COOLER MANUFACTURER'S INSTALLATION INSTRUCTIONS AFTER SET IS INSTALLED.
- INSTALL MAKEUP CONDENSING UNIT FOR MAKE-UP COOLER ON ROOF AS DETAILED IN THE ARCHITECTURAL AND STRUCTURAL DRAWINGS. INSTALL REFRIGERANT LINE SET, THERMOSTATIC EXPANSION VALVE, SOLENOID VALVE, TEMPERATURE CONTROL, SIGHT GLASS, FETTER DRAIN, PRESSURE CONTROL, LOW AMBIENT CONTROL, AND MAKEUP REFRIGERANT HOODING. TRIP AND LOCK REFRIGERANT LINE PER MANUFACTURER'S RECOMMENDATIONS. GAS PIPING TO BE INSTALLED THROUGH ROOF. INSTALLATION SHALL COMPLY WITH ASHRAE 15 STANDARD 15. INSTALL THE REFRIGERANT LINE SET UNDER THE ROOF DECK TO WITHIN 3" OF THE REFRIGERANT CONDENSING UNIT. REFRIGERANT PIPING TO BE INSTALLED TO BE WITHIN 3" OF THE CONDENSING UNIT. WITHIN A 5' AREA. SEE THE ARCHITECTURAL DRAWINGS.
- INSTALL ROOF TOP EQUIPMENT PER MANUFACTURER'S INSTALLATION INSTRUCTIONS AND AS DETAILED IN THE ARCHITECTURAL AND STRUCTURAL DRAWINGS.
- INSTALL EXHAUST FAN SET FOR RETAIL CONTROL AS DETAILED IN THE ARCHITECTURAL AND STRUCTURAL DRAWINGS. INSTALL BREAKER WIRING AS FURNISHED BY CHRYSLER OR EXHAUST FAN E.T.C.
- HOOD SUPPLY OVERLOOK CONNECTION TO SUPPLY SIZES PER DETAIL S/M-001 TYPICAL.
- PROVIDE AUTO-ON/OFF REMOTE SMOKE DETECTOR ANNUNCIATOR WITH REMOTE KEY OPERATED RESET. WIRE A UNIT BACK TO EACH SMOKE DETECTOR. MOUNT UNIT 8" OFF W/NO. TYPICAL.
- INSTALL REMOTE HOLD AIR PUMPER FURNISHED BY TLV IN RTU FOR DETAIL S/M-002. SEE ELECTRICAL DRAWINGS FOR POWER CONNECTION INFORMATION. INSTALL LVV WARNING STICKERS ON FACE OF ENCLOSURE PER DETAIL AND ON ANY RTU ACCESS DOOR(S) THROUGH WHICH THE REM HOLD WOULD BE VISIBLE IF OPENED.
- MAINTAIN 1" CLEARANCE BETWEEN W/TS PER FLEX TERMINATION AND OUTSIDE AIR INTAKES. MAINTAIN 1" CLEARANCE BETWEEN W/TS PER FLEX COMBUSTION AIR INTAKE AND EXHAUST AIR FAN DISCHARGE. SEE PLUMBING DRAWINGS FOR MORE INFORMATION ON WATER HEATER FLEX AND COMBUSTION AIR TERMINATIONS.



HVAC DINING ROOM SECTION
1/8" = 1'-0"



HVAC ROOF PLAN
1/8" = 1'-0"



HVAC FLOOR PLAN
1/8" = 1'-0"

NATIONAL
4832 Trammell Blvd, Suite 250
Hilliard, Ohio 43026
Phone: (614) 751-6610
Fax: (614) 551-6340
Contact: Joe Jones
(614) 338-2024
jones@nationalengineering.com

FOR CONSTRUCTION

THIS DOCUMENT IS THE PROPERTY OF CHRYSLER GROUP SERVICES. IT IS TO BE USED ONLY FOR THE PROJECT AND AT THE LOCATION WHERE SHOWN. IT IS NOT TO BE REPRODUCED OR TRANSMITTED IN ANY FORM OR BY ANY MEANS, ELECTRONIC OR MECHANICAL, INCLUDING PHOTOCOPYING, RECORDING, OR BY ANY INFORMATION STORAGE AND RETRIEVAL SYSTEM.

CHIPOTLE MEXICAN GRILL
CHRYSLER GROUP SERVICES, INC.
4800 N. RIVER ROAD
WARREN, OHIO 44089
TEL: (440) 426-0000
WWW.CHIPOTLE.COM

STORE NO.: 5479
HOPE VALLEY
7021 NC 251 HIGHWAY #903
DURHAM, NC 27707

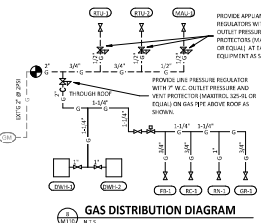
NO.	DATE	DESCRIPTION
1	08/14/2018	ISSUE FOR PERMIT
2	08/14/2018	ISSUE FOR CONSTRUCTION
3	08/14/2018	ISSUE FOR CONSTRUCTION
4	08/14/2018	ISSUE FOR CONSTRUCTION
5	08/14/2018	ISSUE FOR CONSTRUCTION
6	08/14/2018	ISSUE FOR CONSTRUCTION
7	08/14/2018	ISSUE FOR CONSTRUCTION
8	08/14/2018	ISSUE FOR CONSTRUCTION
9	08/14/2018	ISSUE FOR CONSTRUCTION
10	08/14/2018	ISSUE FOR CONSTRUCTION
11	08/14/2018	ISSUE FOR CONSTRUCTION
12	08/14/2018	ISSUE FOR CONSTRUCTION
13	08/14/2018	ISSUE FOR CONSTRUCTION
14	08/14/2018	ISSUE FOR CONSTRUCTION
15	08/14/2018	ISSUE FOR CONSTRUCTION
16	08/14/2018	ISSUE FOR CONSTRUCTION
17	08/14/2018	ISSUE FOR CONSTRUCTION
18	08/14/2018	ISSUE FOR CONSTRUCTION
19	08/14/2018	ISSUE FOR CONSTRUCTION
20	08/14/2018	ISSUE FOR CONSTRUCTION
21	08/14/2018	ISSUE FOR CONSTRUCTION
22	08/14/2018	ISSUE FOR CONSTRUCTION
23	08/14/2018	ISSUE FOR CONSTRUCTION
24	08/14/2018	ISSUE FOR CONSTRUCTION
25	08/14/2018	ISSUE FOR CONSTRUCTION
26	08/14/2018	ISSUE FOR CONSTRUCTION
27	08/14/2018	ISSUE FOR CONSTRUCTION
28	08/14/2018	ISSUE FOR CONSTRUCTION
29	08/14/2018	ISSUE FOR CONSTRUCTION
30	08/14/2018	ISSUE FOR CONSTRUCTION
31	08/14/2018	ISSUE FOR CONSTRUCTION
32	08/14/2018	ISSUE FOR CONSTRUCTION
33	08/14/2018	ISSUE FOR CONSTRUCTION
34	08/14/2018	ISSUE FOR CONSTRUCTION
35	08/14/2018	ISSUE FOR CONSTRUCTION
36	08/14/2018	ISSUE FOR CONSTRUCTION
37	08/14/2018	ISSUE FOR CONSTRUCTION
38	08/14/2018	ISSUE FOR CONSTRUCTION
39	08/14/2018	ISSUE FOR CONSTRUCTION
40	08/14/2018	ISSUE FOR CONSTRUCTION
41	08/14/2018	ISSUE FOR CONSTRUCTION
42	08/14/2018	ISSUE FOR CONSTRUCTION
43	08/14/2018	ISSUE FOR CONSTRUCTION
44	08/14/2018	ISSUE FOR CONSTRUCTION
45	08/14/2018	ISSUE FOR CONSTRUCTION
46	08/14/2018	ISSUE FOR CONSTRUCTION
47	08/14/2018	ISSUE FOR CONSTRUCTION
48	08/14/2018	ISSUE FOR CONSTRUCTION
49	08/14/2018	ISSUE FOR CONSTRUCTION
50	08/14/2018	ISSUE FOR CONSTRUCTION

HVAC PLAN

M100

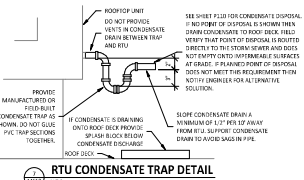
FIXTURE	TAG	MBH	EQUIVALENT LENGTH FROM REGULATOR (FT)
WATER HEATER	DHW-1	35	70
WATER HEATER	DHW-2	35	70
CASE HEATER	CH-1	30	60
GRIDDLE	GR-1	107	150
FRY/POUP AND LINE	FRY-1	232	250
RICE COOKER	RC-1	18	35
RANGE	RN-1	232	250
ROOFTOP ROOFTOP UNIT	RTU-1	150	150
ROOFTOP ROOFTOP UNIT	RTU-2	150	150
CONDENSATE TRAP	CT-1	150	150
CONDENSATE TRAP	CT-2	150	150
CONDENSATE TRAP	CT-3	150	150
CONDENSATE TRAP	CT-4	150	150
CONDENSATE TRAP	CT-5	150	150
CONDENSATE TRAP	CT-6	150	150
CONDENSATE TRAP	CT-7	150	150
CONDENSATE TRAP	CT-8	150	150
CONDENSATE TRAP	CT-9	150	150
CONDENSATE TRAP	CT-10	150	150
CONDENSATE TRAP	CT-11	150	150
CONDENSATE TRAP	CT-12	150	150
CONDENSATE TRAP	CT-13	150	150
CONDENSATE TRAP	CT-14	150	150
CONDENSATE TRAP	CT-15	150	150
CONDENSATE TRAP	CT-16	150	150
CONDENSATE TRAP	CT-17	150	150
CONDENSATE TRAP	CT-18	150	150
CONDENSATE TRAP	CT-19	150	150
CONDENSATE TRAP	CT-20	150	150
CONDENSATE TRAP	CT-21	150	150
CONDENSATE TRAP	CT-22	150	150
CONDENSATE TRAP	CT-23	150	150
CONDENSATE TRAP	CT-24	150	150
CONDENSATE TRAP	CT-25	150	150
CONDENSATE TRAP	CT-26	150	150
CONDENSATE TRAP	CT-27	150	150
CONDENSATE TRAP	CT-28	150	150
CONDENSATE TRAP	CT-29	150	150
CONDENSATE TRAP	CT-30	150	150
CONDENSATE TRAP	CT-31	150	150
CONDENSATE TRAP	CT-32	150	150
CONDENSATE TRAP	CT-33	150	150
CONDENSATE TRAP	CT-34	150	150
CONDENSATE TRAP	CT-35	150	150
CONDENSATE TRAP	CT-36	150	150
CONDENSATE TRAP	CT-37	150	150
CONDENSATE TRAP	CT-38	150	150
CONDENSATE TRAP	CT-39	150	150
CONDENSATE TRAP	CT-40	150	150
CONDENSATE TRAP	CT-41	150	150
CONDENSATE TRAP	CT-42	150	150
CONDENSATE TRAP	CT-43	150	150
CONDENSATE TRAP	CT-44	150	150
CONDENSATE TRAP	CT-45	150	150
CONDENSATE TRAP	CT-46	150	150
CONDENSATE TRAP	CT-47	150	150
CONDENSATE TRAP	CT-48	150	150
CONDENSATE TRAP	CT-49	150	150
CONDENSATE TRAP	CT-50	150	150
CONDENSATE TRAP	CT-51	150	150
CONDENSATE TRAP	CT-52	150	150
CONDENSATE TRAP	CT-53	150	150
CONDENSATE TRAP	CT-54	150	150
CONDENSATE TRAP	CT-55	150	150
CONDENSATE TRAP	CT-56	150	150
CONDENSATE TRAP	CT-57	150	150
CONDENSATE TRAP	CT-58	150	150
CONDENSATE TRAP	CT-59	150	150
CONDENSATE TRAP	CT-60	150	150
CONDENSATE TRAP	CT-61	150	150
CONDENSATE TRAP	CT-62	150	150
CONDENSATE TRAP	CT-63	150	150
CONDENSATE TRAP	CT-64	150	150
CONDENSATE TRAP	CT-65	150	150
CONDENSATE TRAP	CT-66	150	150
CONDENSATE TRAP	CT-67	150	150
CONDENSATE TRAP	CT-68	150	150
CONDENSATE TRAP	CT-69	150	150
CONDENSATE TRAP	CT-70	150	150
CONDENSATE TRAP	CT-71	150	150
CONDENSATE TRAP	CT-72	150	150
CONDENSATE TRAP	CT-73	150	150
CONDENSATE TRAP	CT-74	150	150
CONDENSATE TRAP	CT-75	150	150
CONDENSATE TRAP	CT-76	150	150
CONDENSATE TRAP	CT-77	150	150
CONDENSATE TRAP	CT-78	150	150
CONDENSATE TRAP	CT-79	150	150
CONDENSATE TRAP	CT-80	150	150
CONDENSATE TRAP	CT-81	150	150
CONDENSATE TRAP	CT-82	150	150
CONDENSATE TRAP	CT-83	150	150
CONDENSATE TRAP	CT-84	150	150
CONDENSATE TRAP	CT-85	150	150
CONDENSATE TRAP	CT-86	150	150
CONDENSATE TRAP	CT-87	150	150
CONDENSATE TRAP	CT-88	150	150
CONDENSATE TRAP	CT-89	150	150
CONDENSATE TRAP	CT-90	150	150
CONDENSATE TRAP	CT-91	150	150
CONDENSATE TRAP	CT-92	150	150
CONDENSATE TRAP	CT-93	150	150
CONDENSATE TRAP	CT-94	150	150
CONDENSATE TRAP	CT-95	150	150
CONDENSATE TRAP	CT-96	150	150
CONDENSATE TRAP	CT-97	150	150
CONDENSATE TRAP	CT-98	150	150
CONDENSATE TRAP	CT-99	150	150
CONDENSATE TRAP	CT-100	150	150

- NOTES:
1. PRESSURE RATED APPL. REGULATORS 1" W.C.
 2. DISTANCE AND APPROXIMATE
 3. MAIN GAS PRESSURE 2.5 PSI.
 4. MAXIMUM EQUIVALENT LENGTH OF 350 FT FROM MAIN 1/2"

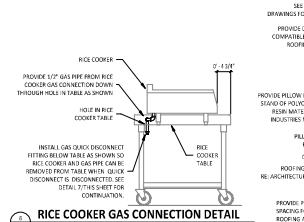


HVAC GAS & CONDENSATE PLAN NOTES

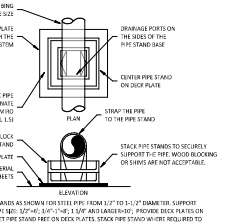
1. CONNECT TO THE EXISTING GAS PIPE ON THE ROOF.
2. PROVIDE WATER HEATERS DOWN 1 & DOWN 2 PER DETAIL LPT700.
3. PROVIDE GAS CONNECTIONS TO THE COOKING EQUIPMENT PER DETAIL LPT700.
4. SUPPORT THE GAS PIPE ON THE ROOF PER DETAIL LPT700. WOOD BRACKING IS NOT AN ACCEPTABLE METHOD OF SUPPORTING THE GAS PIPE.
5. PROVIDE ACCESSIBLE LINE-GAS GAS VALVE, DIRT LEG, AND UNION AT GAS CONNECTION TO THE EQUIPMENT.
6. REFER TO ARCHITECTURAL DRAWINGS FOR FINISHES OF INTERIOR AND EXTERIOR EXPOSED GAS PIPE.
7. PROVIDE EXTERIOR EQUIPMENT GAS SHUTOFF 6" BELOW THE CEILING PER DETAIL LPT700.
8. PROVIDE GAS CONNECTION TO THE RICE COOKER PER DETAIL LPT700.
9. PROVIDE GAS BRACKING TO THE RICE COOKER TABLE SO THAT VALVES AND EXTERIOR LEGS ARE ACCESSIBLE ONCE RICE COOKER IS SECURED INTO PLACE.
10. PROVIDE CONDENSATE TRAP ON RTU PER DETAIL TFM110.
11. PROVIDE 1/2" CONDENSATE DRAIN FROM THE WALK-IN COOLER EVAPORATOR TO THE FLOOR DRAIN. DISCHARGE THROUGH AN EXISTING WALL. PROVIDE 1" CONDENSATE DRAIN FROM THE WALK-IN COOLER AS HIGH AS POSSIBLE. PROVIDE 1/2" CONDENSATE DRAIN FROM THE WALK-IN COOLER DISCHARGE THROUGH AN EXISTING WALL. PROVIDE 1" CONDENSATE DRAIN FROM THE WALK-IN COOLER USING A UNION. CONDENSATE DRAIN SHOULD PENETRATE WALL AT 6" AFF AND BE SECURED TO FLOOR.



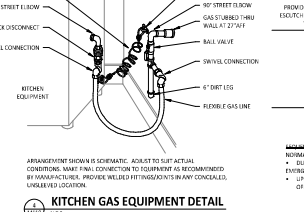
RTU CONDENSATE TRAP DETAIL
N.T.S.



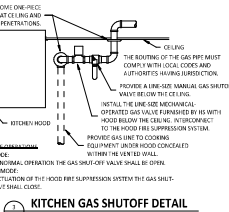
RICE COOKER GAS CONNECTION DETAIL
N.T.S.



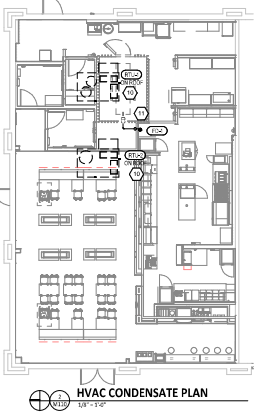
ROOFTOP PIPING SUPPORT
N.T.S.



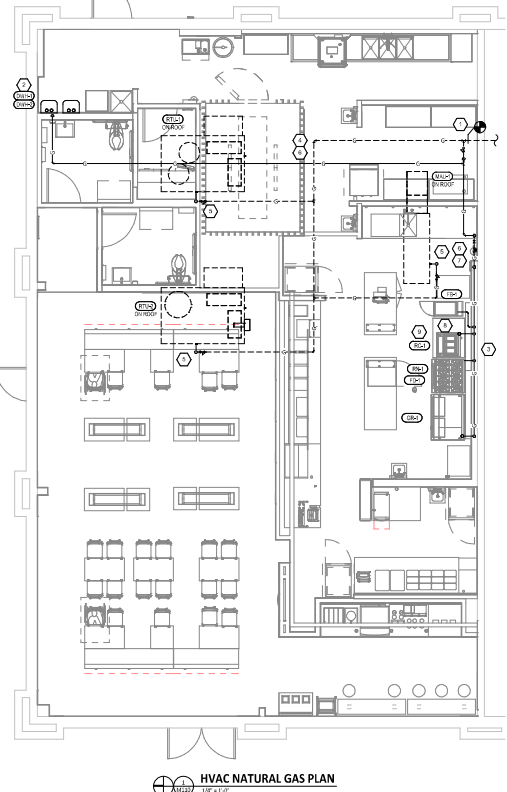
KITCHEN GAS EQUIPMENT DETAIL
N.T.S.



KITCHEN GAS SHUTOFF DETAIL
N.T.S.



HVAC CONDENSATE PLAN
N.T.S.



HVAC NATURAL GAS PLAN
N.T.S.

NATIONAL
4030 Trammell Blvd, Suite 290
Hilliard, Ohio 43026
Phone: (614) 751-6610
Fax: (614) 562-6240
Contact: Joe Jones
(614) 338-2024
jones@nationalengineering.com

FOR CONSTRUCTION

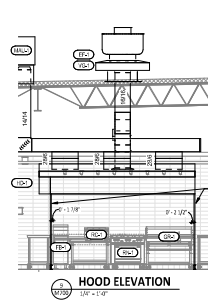
CHIPOTLE MEXICAN GRILL

CHIPOTLE MEXICAN GRILL, INC.
1400 N. HIGHWAY 49
DURHAM, NC 27707
PH: 919.487.2600
WWW.CHIPOTLE.COM

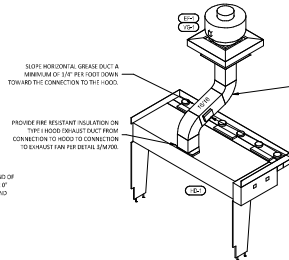
STORE NO.: 5479
HOPE VALLEY
7021 NC 251 HIGHWAY #903
DURHAM, NC 27707

NO.	DATE	DESCRIPTION
1	08/11/2022	ISSUED FOR PERMIT
2	08/11/2022	ISSUED FOR CONSTRUCTION
3	08/11/2022	ISSUED FOR CONSTRUCTION
4	08/11/2022	ISSUED FOR CONSTRUCTION
5	08/11/2022	ISSUED FOR CONSTRUCTION
6	08/11/2022	ISSUED FOR CONSTRUCTION
7	08/11/2022	ISSUED FOR CONSTRUCTION
8	08/11/2022	ISSUED FOR CONSTRUCTION
9	08/11/2022	ISSUED FOR CONSTRUCTION
10	08/11/2022	ISSUED FOR CONSTRUCTION
11	08/11/2022	ISSUED FOR CONSTRUCTION
12	08/11/2022	ISSUED FOR CONSTRUCTION
13	08/11/2022	ISSUED FOR CONSTRUCTION
14	08/11/2022	ISSUED FOR CONSTRUCTION
15	08/11/2022	ISSUED FOR CONSTRUCTION
16	08/11/2022	ISSUED FOR CONSTRUCTION
17	08/11/2022	ISSUED FOR CONSTRUCTION
18	08/11/2022	ISSUED FOR CONSTRUCTION
19	08/11/2022	ISSUED FOR CONSTRUCTION
20	08/11/2022	ISSUED FOR CONSTRUCTION
21	08/11/2022	ISSUED FOR CONSTRUCTION
22	08/11/2022	ISSUED FOR CONSTRUCTION
23	08/11/2022	ISSUED FOR CONSTRUCTION
24	08/11/2022	ISSUED FOR CONSTRUCTION
25	08/11/2022	ISSUED FOR CONSTRUCTION
26	08/11/2022	ISSUED FOR CONSTRUCTION
27	08/11/2022	ISSUED FOR CONSTRUCTION
28	08/11/2022	ISSUED FOR CONSTRUCTION
29	08/11/2022	ISSUED FOR CONSTRUCTION
30	08/11/2022	ISSUED FOR CONSTRUCTION
31	08/11/2022	ISSUED FOR CONSTRUCTION
32	08/11/2022	ISSUED FOR CONSTRUCTION
33	08/11/2022	ISSUED FOR CONSTRUCTION
34	08/11/2022	ISSUED FOR CONSTRUCTION
35	08/11/2022	ISSUED FOR CONSTRUCTION
36	08/11/2022	ISSUED FOR CONSTRUCTION
37	08/11/2022	ISSUED FOR CONSTRUCTION
38	08/11/2022	ISSUED FOR CONSTRUCTION
39	08/11/2022	ISSUED FOR CONSTRUCTION
40	08/11/2022	ISSUED FOR CONSTRUCTION
41	08/11/2022	ISSUED FOR CONSTRUCTION
42	08/11/2022	ISSUED FOR CONSTRUCTION
43	08/11/2022	ISSUED FOR CONSTRUCTION
44	08/11/2022	ISSUED FOR CONSTRUCTION
45	08/11/2022	ISSUED FOR CONSTRUCTION
46	08/11/2022	ISSUED FOR CONSTRUCTION
47	08/11/2022	ISSUED FOR CONSTRUCTION
48	08/11/2022	ISSUED FOR CONSTRUCTION
49	08/11/2022	ISSUED FOR CONSTRUCTION
50	08/11/2022	ISSUED FOR CONSTRUCTION
51	08/11/2022	ISSUED FOR CONSTRUCTION
52	08/11/2022	ISSUED FOR CONSTRUCTION
53	08/11/2022	ISSUED FOR CONSTRUCTION
54	08/11/2022	ISSUED FOR CONSTRUCTION
55	08/11/2022	ISSUED FOR CONSTRUCTION
56	08/11/2022	ISSUED FOR CONSTRUCTION
57	08/11/2022	ISSUED FOR CONSTRUCTION
58	08/11/2022	ISSUED FOR CONSTRUCTION
59	08/11/2022	ISSUED FOR CONSTRUCTION
60	08/11/2022	ISSUED FOR CONSTRUCTION
61	08/11/2022	ISSUED FOR CONSTRUCTION
62	08/11/2022	ISSUED FOR CONSTRUCTION
63	08/11/2022	ISSUED FOR CONSTRUCTION
64	08/11/2022	ISSUED FOR CONSTRUCTION
65	08/11/2022	ISSUED FOR CONSTRUCTION
66	08/11/2022	ISSUED FOR CONSTRUCTION
67	08/11/2022	ISSUED FOR CONSTRUCTION
68	08/11/2022	ISSUED FOR CONSTRUCTION
69	08/11/2022	ISSUED FOR CONSTRUCTION
70	08/11/2022	ISSUED FOR CONSTRUCTION
71	08/11/2022	ISSUED FOR CONSTRUCTION
72	08/11/2022	ISSUED FOR CONSTRUCTION
73	08/11/2022	ISSUED FOR CONSTRUCTION
74	08/11/2022	ISSUED FOR CONSTRUCTION
75	08/11/2022	ISSUED FOR CONSTRUCTION
76	08/11/2022	ISSUED FOR CONSTRUCTION
77	08/11/2022	ISSUED FOR CONSTRUCTION
78	08/11/2022	ISSUED FOR CONSTRUCTION
79	08/11/2022	ISSUED FOR CONSTRUCTION
80	08/11/2022	ISSUED FOR CONSTRUCTION
81	08/11/2022	ISSUED FOR CONSTRUCTION
82	08/11/2022	ISSUED FOR CONSTRUCTION
83	08/11/2022	ISSUED FOR CONSTRUCTION
84	08/11/2022	ISSUED FOR CONSTRUCTION
85	08/11/2022	ISSUED FOR CONSTRUCTION
86	08/11/2022	ISSUED FOR CONSTRUCTION
87	08/11/2022	ISSUED FOR CONSTRUCTION
88	08/11/2022	ISSUED FOR CONSTRUCTION
89	08/11/2022	ISSUED FOR CONSTRUCTION
90	08/11/2022	ISSUED FOR CONSTRUCTION
91	08/11/2022	ISSUED FOR CONSTRUCTION
92	08/11/2022	ISSUED FOR CONSTRUCTION
93	08/11/2022	ISSUED FOR CONSTRUCTION
94	08/11/2022	ISSUED FOR CONSTRUCTION
95	08/11/2022	ISSUED FOR CONSTRUCTION
96	08/11/2022	ISSUED FOR CONSTRUCTION
97	08/11/2022	ISSUED FOR CONSTRUCTION
98	08/11/2022	ISSUED FOR CONSTRUCTION
99	08/11/2022	ISSUED FOR CONSTRUCTION
100	08/11/2022	ISSUED FOR CONSTRUCTION

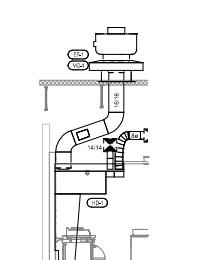
NO.	DATE	DESCRIPTION
1	08/11/2022	ISSUED FOR PERMIT
2	08/11/2022	ISSUED FOR CONSTRUCTION
3	08/11/2022	ISSUED FOR CONSTRUCTION
4	08/11/2022	ISSUED FOR CONSTRUCTION
5	08/11/2022	ISSUED FOR CONSTRUCTION
6	08/11/2022	ISSUED FOR CONSTRUCTION
7	08/11/2022	ISSUED FOR CONSTRUCTION
8	08/11/2022	ISSUED FOR CONSTRUCTION
9	08/11/2022	ISSUED FOR CONSTRUCTION
10	08/11/2022	ISSUED FOR CONSTRUCTION
11	08/11/2022	ISSUED FOR CONSTRUCTION
12	08/11/2022	ISSUED FOR CONSTRUCTION
13	08/11/2022	ISSUED FOR CONSTRUCTION
14	08/11/2022	ISSUED FOR CONSTRUCTION
15	08/11/2022	ISSUED FOR CONSTRUCTION
16	08/11/2022	ISSUED FOR CONSTRUCTION
17	08/11/2022	ISSUED FOR CONSTRUCTION
18	08/11/2022	ISSUED FOR CONSTRUCTION
19		



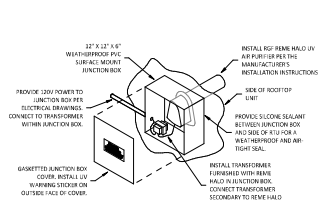
HOOD ELEVATION
N.T.S.



HOOD EXHAUST ISOMETRIC
N.T.S.



DUCT SECTION AT HOOD
N.T.S.

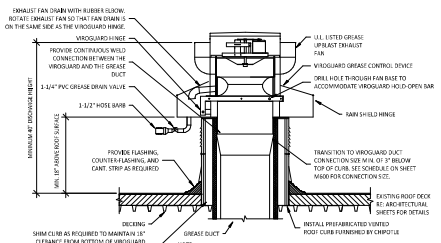


UV AIR PURIFIER INSTALLATION
N.T.S.

INSTALL THE PURIFIER BY THE UNIT ON THE OUTSIDE FACE OF THE HOOD UNIT AND WITH AN LEAST FOUR EXTENDING TO THE INTERIOR OF THE HOOD UNIT. THIS IS VERY IMPORTANT. LOCATION TO AVOID: BATHING, STOVE, OR OTHERS WITH ANY OF THE INTERIOR COMPONENTS. INSTALLATION LOCATION SHALL BE AS FOLLOWS:

FRAME: INSTALL INTO THE SUPPLY AIR STREAM THROUGH THE REMOVABLE PANEL. COORDINATE THE HEIGHTS, DISCONNECT SUPPLY AIR OPENING.

NOTE: INSTALL INTO THE SUPPLY AIR PLUMB FROM THE BACK SIDE OF THE UNIT JUST ABOVE THE HEAT EXCHANGER.

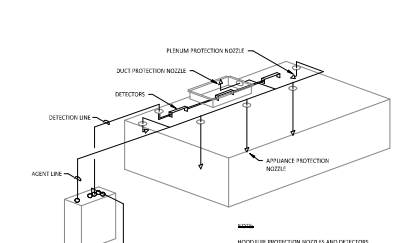


GREASE EXHAUST FAN
N.T.S.

INSTALLATION SHALL BE IN ACCORDANCE WITH ALL REQUIREMENTS.

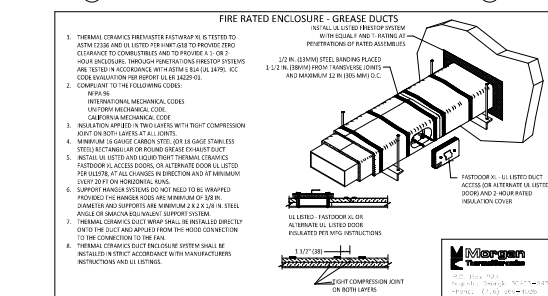
1. INSTALLATION SHALL BE IN ACCORDANCE WITH ALL REQUIREMENTS.

2. HANG FAN SO IT TIPS BACK TOWARD FAN CHAIN AND TOWARD VENTROGATED DUCT.



FIRE SUPPRESSION SYSTEM SCHEMATIC
N.T.S.

ENCLOSURE WITH PROTECTION NOZZLES AND DETECTORS ARE FORMERLY ONLY. HOOD SUPPRESSOR SHALL PREPARE HOOD WITH SHOWN NOZZLES. ACTUAL DUCT LAYOUT AND SHOWN DETECTOR FORMATS ASSOCIATED WITH THIS WORK.



FIRE RATED ENCLOSURE - GREASE DUCTS
N.T.S.

1. THERMAL CHAMBER FIREMASTER FASTWRAP IS TESTED TO ASTM 2530M (UL LISTED) WITH 1/2\"/>

2. COMPLIANT TO THE FOLLOWING CODES:

- INTERNATIONAL MECHANICAL CODES
- CALIFORNIA MECHANICAL CODE
- UNIFORM MECHANICAL CODE

3. INSULATION APPLIED IN TWO LAYERS WITH "RIGHT" COMPRESSION JOINT ON BOTH LAYERS AT ALL JOINTS.

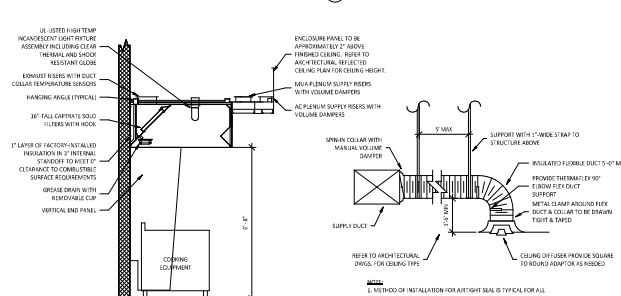
4. MINIMUM INSULATION THICKNESS SHALL BE 1/2\"/>

5. INSTALL UL LISTED AND UL RATED THERMAL CHAMBER FIREMASTER FASTWRAP ACCESS DOORS, OR ALTERNATE DOOR LISTED FOR LISTING AT ALL JOINTS IN DIRECTION AND AT MINIMUM 1/2\"/>

6. SUPPORT BRACES SYSTEMS DO NOT NEED TO BE INSTALLED. THE HANGER HOOD ARE MINIMUM OF 3/8\"/>

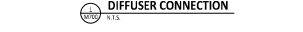
7. THERMAL CHAMBER FASTWRAP SHALL BE INSTALLED DIRECTLY ON THE DUCT AND APPLIED FROM THE HOOD CONNECTION TO THE CONNECTION TO THE FAN.

8. THERMAL CHAMBER FASTWRAP SYSTEM SHALL BE INSTALLED IN ACCORDANCE WITH MANUFACTURER'S INSTRUCTIONS AND UL LISTINGS.



HOOD SECTION VIEW
N.T.S.

1. METHOD OF INSTALLATION FOR AIRFLOW SEALS IS TYPICAL FOR ALL FLEX CONNECTIONS TO AIR DISTRIBUTION DEVICES.



DIFFUSER CONNECTION
N.T.S.

NATIONAL
4030 Treuman Blvd, Suite 290
Hilliard, Ohio 43026
Phone: (614) 751-6610
Fax: (614) 551-6340
Contact: Joe Jones (614) 338-2024
jones@nationalengineering.com

FOR CONSTRUCTION



CHIPOTLE MEXICAN GRILL, INC.
4030 TREUMAN BLVD
HILLIARD, OHIO 43026
PH: (614) 338-2024
WWW.CHIPOTLE.COM

STORE NO.: 5479
HOPE VALLEY
7021 NC 751 HIGHWAY #903
DURHAM, NC 27707

NO.	DATE	DESCRIPTION
1	08/14/2024	ISSUE FOR CONSTRUCTION
2	08/14/2024	ISSUE FOR CONSTRUCTION
3	08/14/2024	ISSUE FOR CONSTRUCTION
4	08/14/2024	ISSUE FOR CONSTRUCTION
5	08/14/2024	ISSUE FOR CONSTRUCTION
6	08/14/2024	ISSUE FOR CONSTRUCTION
7	08/14/2024	ISSUE FOR CONSTRUCTION
8	08/14/2024	ISSUE FOR CONSTRUCTION
9	08/14/2024	ISSUE FOR CONSTRUCTION
10	08/14/2024	ISSUE FOR CONSTRUCTION

HVAC DETAILS

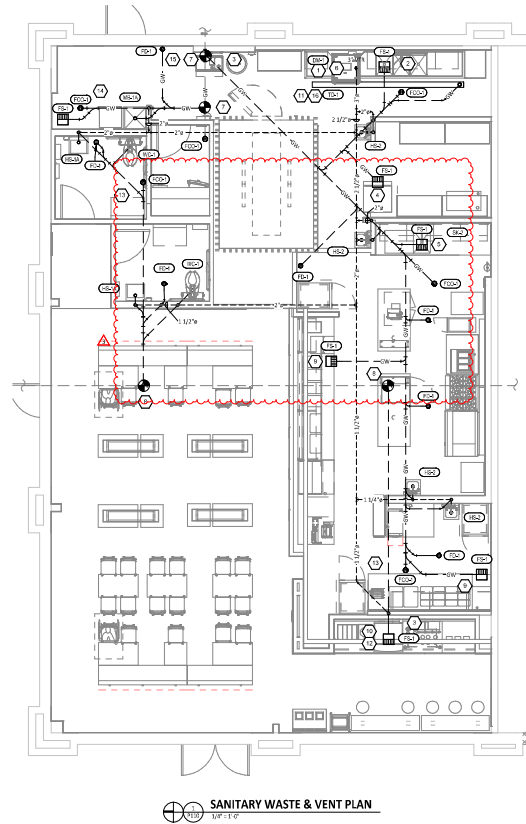
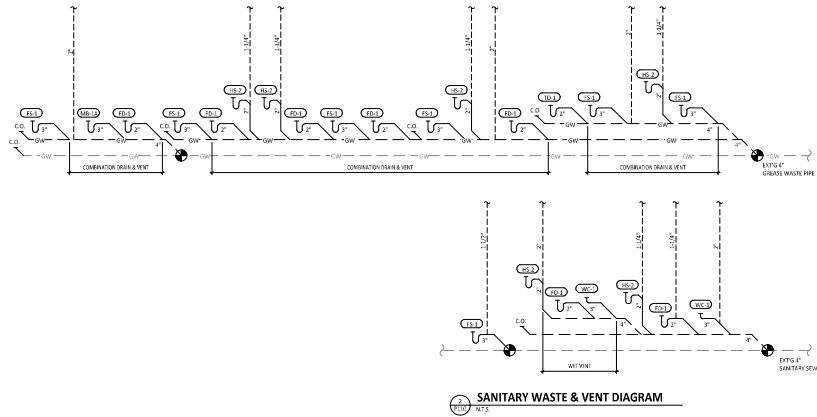
M700

PLUMBING FIXTURE SUPPLY CONNECTIONS

Rough-in Type Key						
ANGLE 3/8"						
ANGLE 1/2"						
ANGLE 3/4"						
ANGLE 1"						
DIRECT						
HOSE 1/2"						
HOSE 3/4"						
HOSE 1"						
HOSE 1 1/2"						
HOSE 2"						
HOSE 2 1/2"						
HOSE 3"						
HOSE 4"						
HOSE 6"						
HOSE 8"						
HOSE 10"						
HOSE 12"						
HOSE 14"						
HOSE 16"						
HOSE 18"						
HOSE 20"						
HOSE 24"						
HOSE 30"						
HOSE 36"						
HOSE 42"						
HOSE 48"						
HOSE 54"						
HOSE 60"						
HOSE 72"						
HOSE 84"						
HOSE 96"						
HOSE 108"						
HOSE 120"						
HOSE 144"						
HOSE 168"						
HOSE 192"						
HOSE 216"						
HOSE 240"						
HOSE 270"						
HOSE 300"						
HOSE 324"						
HOSE 360"						
HOSE 408"						
HOSE 456"						
HOSE 504"						
HOSE 540"						
HOSE 576"						
HOSE 612"						
HOSE 648"						
HOSE 684"						
HOSE 720"						
HOSE 756"						
HOSE 792"						
HOSE 828"						
HOSE 864"						
HOSE 900"						
HOSE 936"						
HOSE 972"						
HOSE 1008"						
HOSE 1044"						
HOSE 1080"						
HOSE 1116"						
HOSE 1152"						
HOSE 1188"						
HOSE 1224"						
HOSE 1260"						
HOSE 1296"						
HOSE 1332"						
HOSE 1368"						
HOSE 1404"						
HOSE 1440"						
HOSE 1476"						
HOSE 1512"						
HOSE 1548"						
HOSE 1584"						
HOSE 1620"						
HOSE 1656"						
HOSE 1692"						
HOSE 1728"						
HOSE 1764"						
HOSE 1800"						
HOSE 1836"						
HOSE 1872"						
HOSE 1908"						
HOSE 1944"						
HOSE 1980"						
HOSE 2016"						
HOSE 2052"						
HOSE 2088"						
HOSE 2124"						
HOSE 2160"						
HOSE 2196"						
HOSE 2232"						
HOSE 2268"						
HOSE 2304"						
HOSE 2340"						
HOSE 2376"						
HOSE 2412"						
HOSE 2448"						
HOSE 2484"						
HOSE 2520"						
HOSE 2556"						
HOSE 2592"						
HOSE 2628"						
HOSE 2664"						
HOSE 2700"						
HOSE 2736"						
HOSE 2772"						
HOSE 2808"						
HOSE 2844"						
HOSE 2880"						
HOSE 2916"						
HOSE 2952"						
HOSE 2988"						
HOSE 3024"						
HOSE 3060"						
HOSE 3096"						
HOSE 3132"						
HOSE 3168"						
HOSE 3204"						
HOSE 3240"						
HOSE 3276"						
HOSE 3312"						
HOSE 3348"						
HOSE 3384"						
HOSE 3420"						
HOSE 3456"						
HOSE 3492"						
HOSE 3528"						
HOSE 3564"						
HOSE 3600"						
HOSE 3636"						
HOSE 3672"						
HOSE 3708"						
HOSE 3744"						
HOSE 3780"						
HOSE 3816"						
HOSE 3852"						
HOSE 3888"						
HOSE 3924"						
HOSE 3960"						
HOSE 3996"						
HOSE 4032"						
HOSE 4068"						
HOSE 4104"						
HOSE 4140"						
HOSE 4176"						
HOSE 4212"						
HOSE 4248"						
HOSE 4284"						
HOSE 4320"						
HOSE 4356"						
HOSE 4392"						
HOSE 4428"						
HOSE 4464"						
HOSE 4500"						
HOSE 4536"						
HOSE 4572"						
HOSE 4608"						
HOSE 4644"						
HOSE 4680"						
HOSE 4716"						
HOSE 4752"						
HOSE 4788"						
HOSE 4824"						
HOSE 4860"						
HOSE 4896"						
HOSE 4932"						
HOSE 4968"						
HOSE 5004"						
HOSE 5040"						
HOSE 5076"						
HOSE 5112"						
HOSE 5148"						
HOSE 5184"						
HOSE 5220"						
HOSE 5256"						
HOSE 5292"						
HOSE 5328"						
HOSE 5364"						
HOSE 5400"						
HOSE 5436"						
HOSE 5472"						
HOSE 5508"						
HOSE 5544"						
HOSE 5580"						
HOSE 5616"						
HOSE 5652"						
HOSE 5688"						
HOSE 5724"						
HOSE 5760"						
HOSE 5796"						
HOSE 5832"						
HOSE 5868"						
HOSE 5904"						
HOSE 5940"						
HOSE 5976"						
HOSE 6012"						
HOSE 6048"						
HOSE 6084"						
HOSE 6120"						
HOSE 6156"						
HOSE 6192"						
HOSE 6228"						
HOSE 6264"						
HOSE 6300"						
HOSE 6336"						
HOSE 6372"						
HOSE 6408"						
HOSE 6444"						
HOSE 6480"						
HOSE 6516"						
HOSE 6552"						
HOSE 6588"						
HOSE 6624"						
HOSE 6660"						
HOSE 6696"						
HOSE 6732"						
HOSE 6768"						
HOSE 6804"						
HOSE 6840"						
HOSE 6876"						
HOSE 6912"						
HOSE 6948"						
HOSE 6984"						
HOSE 7020"						
HOSE 7056"						
HOSE 7092"						
HOSE 7128"						
HOSE 7164"						
HOSE 7200"						
HOSE 7236"						
HOSE 7272"						
HOSE 7308"						
HOSE 7344"						
HOSE 7380"						
HOSE 7416"						
HOSE 7452"						
HOSE 7488"						
HOSE 7524"						
HOSE 7560"						
HOSE 7596"						
HOSE 7632"						
HOSE 7668"						
HOSE 7704"						
HOSE 7740"						
HOSE 7776"						
HOSE 7812"						
HOSE 7848"						
HOSE 7884"						
HOSE 7920"						
HOSE 7956"						
HOSE 7992"						
HOSE 8028"						
HOSE 8064"						
HOSE 8100"						
HOSE 8136"						
HOSE 8172"						
HOSE 8208"						
HOSE 8244"						
HOSE 8280"						
HOSE 8316"						
HOSE 8352"						
HOSE 8388"						
HOSE 8424"						
HOSE 8460"						
HOSE 8496"						
HOSE 8532"						
HOSE 8568"						
HOSE 8604"						
HOSE 8640"						
HOSE 8676"						
HOSE 8712"						
HOSE 8748"						
HOSE 8784"						
HOSE 8820"						
HOSE 8856"						
HOSE 8892"						
HOSE 8928"						
HOSE 8964"						
HOSE 9000"						
HOSE 9036"						
HOSE 9072"						
HOSE 9108"						
HOSE 9144"						
HOSE 9180"						
HOSE 9216"						
HOSE 9252"						
HOSE 9288"						
HOSE 9324"						
HOSE 9360"						
HOSE 9396"						
HOSE 9432"						
HOSE 9468"						
HOSE 9504"						
HOSE 9540"						
HOSE 9576"						
HOSE 9612"						
HOSE 9648"						
HOSE 9684"						
HOSE 9720"						
HOSE 9756"						
HOSE 9792"						
HOSE 9828"						
HOSE 9864"						
HOSE 9900"						
HOSE 9936"						
HOSE 9972"						
HOSE 10008"						
HOSE 10044"						
HOSE 10080"						
HOSE 10116"						
HOSE 10152"						
HOSE 10188"						
HOSE 10224"						
HOSE 10260"						
HOSE 10296"						
HOSE 10332"						
HOSE 10368"						
HOSE 10404"						
HOSE 10440"						
HOSE 10476"						
HOSE 10512"						
HOSE 10548"						
HOSE 10584"						
HOSE 10620"						
HOSE 10656"						
HOSE 10692"						
HOSE 10728"						
HOSE 10764"						
HOSE 10800"						
HOSE 10836"						
HOSE 10872"						
HOSE 10908"						
HOSE 10944"						
HOSE 10980"						
HOSE 11016"						
HOSE 11052"						
HOSE 11088"						
HOSE 11124"						
HOSE 11160"						
HOSE 11196"						
HOSE 11232"						
HOSE 11268"						
HOSE 11304"						
HOSE 11340"						
HOSE 11376"						
HOSE 11412"						
HOSE 11448"						
HOSE 11484"						
HOSE 11520"						
HOSE 11556"						
HOSE 11592"						
HOSE 11628"						
HOSE 11664"						
HOSE 11700"						
HOSE 11736"						
HOSE 11772"						
HOSE 11808"						
HOSE 11844"						
HOSE 11880"						
HOSE 11916"						
HOSE 11952"						
HOSE 11988"						
HOSE 12024"						
HOSE 12060"						
HOSE 12096"						
HOSE 12132"						
HOSE 12168"						
HOSE 12204"						
HOSE 12240"						
HOSE 12276"						
HOSE 12312"						
HOSE 12348"						
HOSE 12384"						
HOSE 12420"						
HOSE 12456"						
HOSE 12492"						
HOSE 12528"						
HOSE 12564"						
HOSE 12600"						
HOSE 12636"						
HOSE 12672"						
HOSE 12708"						
HOSE 12744"						
HOSE 12780"						
HOSE 12816"						
HOSE 12852"						
HOSE 12888"						
HOSE 12924"						
HOSE 12960"						
HOSE 12996"						
HOSE 13032"						
HOSE 13068"						
HOSE 13104"						
HOSE 13140"						
HOSE 13176"						
HOSE 13212"						
HOSE 13248"						
HOSE 13284"						
HOSE 13320"						
HOSE 13356"						
HOSE 13392"						
HOSE 13428"						
HOSE 13464"						
HOSE 13500"						
HOSE 13536"						
HOSE 13572"						
HOSE 13608"						
HOSE 13644"						
HOSE 13680"						
HOSE 13716"						
HOSE 13752"						
HOSE 13788"						
HOSE 13824"						
HOSE 13860"						
HOSE 13896"						
HOSE 13932"						
HOSE 13968"						
HOSE 14004"						
HOSE 14040"						
HOSE 14076"						
HOSE 14112"						
HOSE 14148"						
HOSE 14184"						
HOSE 14220"						
HOSE 14256"						
HOSE 14292"						
HOSE 14328"						
HOSE 14364"						
HOSE 14400"						
HOSE 14436"						
HOSE 14472"						
HOSE 14508"						
HOSE 14544"						
HOSE 14580"						
HOSE 14616"						
HOSE 14652"						
HOSE 14688"						
HOSE 14724"						
HOSE 14760"						
HOSE 14796"						
HOSE 14832"						
HOSE 14868"						
HOSE 14904"						
HOSE 14940"						
HOSE 14976"						
HOSE 15012"						
HOSE 15048"						
HOSE 15084"						
HOSE 15120"						
HOSE 15156"						
HOSE 15192"						
HOSE 15228"						
HOSE 15264"						
HOSE 15300"						
HOSE 15336"						
HOSE 15372"						
HOSE 15408"						
HOSE 15444"						
HOSE 15480"						
HOSE 15516"						
HOSE 15552"						
HOSE 15588"						
HOSE 15624"						
HOSE 15660"						
HOSE 15696"						
HOSE 15732"						
HOSE 15768"						
HOSE 15804"						
HOSE 15840"						
HOSE 15876"						
HOSE 15912"						
HOSE 15948"						
HOSE 15984"						
HOSE 16020"						
HOSE 16056"						
HOSE 16092"						
HOSE 16128"						
HOSE 16164"						
HOSE 16200"						
HOSE 16236"						
HOSE 16272"						
HOSE 16308"						
HOSE 16344"						
HOSE 16380"						
HOSE 16416"						
HOSE 16452"						
HOSE 16488"						
HOSE 16524"						
HOSE 16560"						
HOSE 16596"						
HOSE 16632"						
HOSE 16668"						
HOSE 16704"						
HOSE 16740"						
HOSE 16776"						
HOSE 16812"						
HOSE 16848"						
HOSE 16884"						
HOSE 16920"						
HOSE 16956"						
HOSE 16992"						
HOSE 17028"						
HOSE 17064"						
HOSE 17100"						
HOSE 17136"						
HOSE 17172"						
HOSE 17208"						
HOSE 17244"						
HOSE 17280"						
HOSE 17316"						
HOSE 17352"						
HOSE 17388"						
HOSE 17424"						
HOSE 17460"						
HOSE 17496"						
HOSE 17532"						
HOSE 17568"						
HOSE 17604"						
HOSE 17640"						
HOSE 17676"						
HOSE 17712"						
HOSE 17748"						
HOSE 17784"						
HOSE 17820"						
HOSE 17856"						
HOSE 17892"						

PLUMBING WASTE AND VENT PLAN NOTES

1. INSTALL DRAIN HOSE FURNISHED WITH DISH MACHINE FROM DISH MACHINE OUTLET TO FLOOR SINK. HOLD DRAIN HOSE TIGHT TO WALL AND SECURE TO 3/4" COMP SINK DRAIN TO MAINTAIN AN AIR GAP AT THE FLOOR SINK.
2. PROVIDE DRAIN CONNECTIONS TO THE THREE COMPARTMENT SINK PER DETAIL 219700.
3. COORDINATE HOISTING OF SODA BUNDLES WITH COCA-COLA TECHNIUM FROM BAGHOUSE AREA TO EACH SODA FOUNTAIN. OTHER THAN VENT IN THE WALLS DOWN TO THE DRAIN BOX THE SODA BUNDLES SHALL BE HOISTED OVERHEAD WITHOUT CONTACT. COORDINATE SUPPORT AND HOISTING OF THE SODA LINE BUNDLES WITH COCA-COLA TECHNIUM EQUIPMENT HOISTING AND PROVIDE NECESSARY SUPPORTS. SEE ARCHITECTURAL DRAWINGS FOR SODA BUNDLE TERMINATION LOCATION AND PROVIDE TERMINATION PER DETAIL 1327700.
4. PROVIDE PVC DRAIN PIPES FROM THE ICE MACHINE TO THE FLOOR SINK PER THE MANUFACTURER'S INSTALLATION INSTRUCTIONS. PROVIDE A CODE APPROVED AIR GAP AT THE DISCHARGE TO THE FLOOR SINK. SECURE ICE MASHER PIPES TO THE BOTTOM OF THE ICE MASHER.
5. PROVIDE DRAIN LINES FROM THE FOOD PREP SINK TO THE FLOOR SINK. PROVIDE AN AIR GAP AT THE DISCHARGE TO THE FLOOR SINK.
6. PROVIDE A 2" VENT THROUGH THE ROOF PER DETAIL 319700.
7. CONNECT TO EXISTING 4" GREASE WASTE LINE LEADING TO EXISTING DEDICATED 1500 GALLON INTERSECTION.
8. CONNECT TO EXISTING 4" SANITARY SEWER.
9. PROVIDE 3/4" VENTED DRAIN FROM THE FOOD TABLE TO THE FLOOR SINK. DRAIN THROUGH AN AIR GAP.
10. PROVIDE PROTECTED COPPER DRAIN LINES FROM THE TEA TRAY DRAIN AND THE SODA MACHINE DRAIN TO THE FLOOR SINK. DRAIN THROUGH AN AIR GAP. HOLD TEA TRAY DRAIN AS HIGH AS POSSIBLE AND SECURE TO STRUCTURE BELOW THE OPENING COURSE.
11. TRAP TRENCH DRAIN ENDS PER THE MANUFACTURER'S INSTALLATION INSTRUCTIONS PRIOR TO INSTALLATION SO THAT GRATE FITS WITHOUT GAPS. INSTALL TRAP TRENCH DRAIN WITH SLOUGH POSITIVE SLOPE TOWARD THE DRAIN CONNECTION TO AVOID STANDING WATER IN TRENCH DRAIN.
12. PROVIDE 1/2" PVC DRAIN PIPE FROM THE ICE MACHINE TO THE FLOOR SINK PER THE MANUFACTURER'S INSTALLATION INSTRUCTIONS. PROVIDE A CODE APPROVED AIR GAP AT THE DISCHARGE TO THE FLOOR SINK.
13. DO NOT PROVIDE WALL CLEANSING TUBS OR PUBLICLY VISIBLE WALLS. IF A WALL CLEANSUP IS REQUIRED ON THESE SUBJECTS COORDINATE THE EXACT LOCATION WITH CHIPOTLE'S CONSTRUCTION MANAGERS.
14. PROVIDE INDIRECT WASTE AND CONDENSATE DRAINING FROM FIXTURES OTHER THAN KITCHEN SINKS CONTACTED IN THE WALL AS SHOWN IN DETAIL 019700.
15. PROVIDE DRAIN FROM WATER FILTER BEF TO FLOOR DRAIN CONCEALED IN THE WALL AS SHOWN IN DETAIL 319700.
16. PROVIDE TRAP DRAIN AS SHOWN IN DETAIL 159700.



NATIONAL
 4030 Trammell Blvd, Suite 290
 Hilliard, Ohio 43026
 Phone: (614) 751-6610
 Fax: (614) 552-6240
 Contact: Joe Jones
 (614) 338-2024
 jones@nationalengineering.com

FOR CONSTRUCTION

THIS PLAN IS THE PROPERTY OF NATIONAL ENGINEERING. IT IS TO BE USED ONLY FOR THE PROJECT AND SITE SPECIFICALLY IDENTIFIED HEREON. NO PART OF THIS PLAN IS TO BE REPRODUCED OR TRANSMITTED IN ANY FORM OR BY ANY MEANS, ELECTRONIC OR MECHANICAL, INCLUDING PHOTOCOPYING, RECORDING, OR BY ANY INFORMATION STORAGE AND RETRIEVAL SYSTEM, WITHOUT THE WRITTEN PERMISSION OF NATIONAL ENGINEERING.

CHIPOTLE MEXICAN GRILL, INC.
 4000 W. 15TH AVENUE, SUITE 100
 DENVER, CO 80202
 (303) 733-9200
 WWW.CHIPOTLE.COM

STORE NO.: 5479
 HOPE VALLEY
 7021 NC 251 HIGHWAY #903
 DURHAM, NC 27707

DATE	DESCRIPTION
01/15/2019	ISSUE FOR PERMITTING
01/15/2019	PERMIT SET
01/15/2019	CONSTRUCTION SET
01/15/2019	FOR CONSTRUCTION

PLUMBING PLAN
 WASTE & VENT
P110

PLUMBING FIXTURE SCHEDULE																						
TAG	FIXTURE	FURNISHED BY	INSTALLED BY	MANUFACTURER	MODEL	DESCRIPTION	QUANTITY	CONNECTION SIZES			FIXTURE UNITS (EACH)				FIXTURE UNITS (TOTAL)							
								CW	HW	WASTE	CW	HW	TOTAL	SAN	CW	HW	TOTAL	SAN				
MP-1	1/2" BACKFLOW PREVENTER	GC	GC	CONBRACO	MA11-207	LEAD FREE REDUCED PRESSURE PRINCIPLE BACKFLOW PREVENTER WITH AUTOMATIC DIFFERENTIAL RELIEF VALVE	1	1/2"			1			1	0	0	1	0	0	0	0	
MP-2	1/2" BACKFLOW PREVENTER	GC	GC	CONBRACO	MA11-207	LEAD FREE REDUCED PRESSURE PRINCIPLE BACKFLOW PREVENTER WITH AUTOMATIC DIFFERENTIAL RELIEF VALVE AND AIR GAP FITTING	1	1/2"			1			1	0	0	1	0	0	0	0	
DM-1	DISINFECTANT MACHINE (PUMPED OUTLET)	FES	GC	FURNISHED BY KES	-	CHEMICAL SANITIZING DISINFECTANT MACHINE WITH INTEGRAL ELECTRIC BOOSTER HEATER AND PUMPED OUTLET	1		1/2"	3/4"	0	1	3	0	0	1	1	0	0	0	0	
ET-1	EXPANSION TANK	GC	GC	AMTROL	BT-5	5 GALLON CAPACITY	1	1/2"			0	0	0	0	0	0	0	0	0	0	0	
FCO-1	FLOOR CLEANOUT (FT)	GC	GC	BIKAM CHEF	BS2-4PNC	OVER-CRAGE ADJUSTABLE CLEANOUT WITH INTERNAL THREADED CLEANOUT PLUG AND ROUND NICKEL BRONZE RING AND COVER OR APPROVED EQUAL WITH INTERNAL THREADED CLEANOUT PLUG	6			4"			0	0	0	0	0	0	0	0	0	
FD-1	FLOOR DRAIN	GC	GC	BIKAM CHEF	BD-2-7-7NR	ADJUSTABLE FLOOR DRAIN ROUND POLISHED METAL RING AND STAINLESS	7			2"			0	2	0	0	0	0	0	0	14	
FL-1	FLOOR SINK	GC	GC	BIKAM CHEF	BL1-1P102	DRAIN CUPPLY PVC FLOOR SINK WITH ALUMINUM DOME BOTTOM STAINLESS AND OPEN WALL PVC DRAIN	7			3"			0	5	0	0	0	0	0	0	35	
FR-1	HOSE BIBB	FES	GC	FES	BU-2145-01-KK	COMMERCIAL QUANTITY HOT & COLD MIXING WALL MOUNTED SUPPLY HANGERS WITH PROGRAMMABLE HOT/COLD STOP AND CHECK VALVE	2	1/2"	1/2"		1.5	1.5	2	0	3	3	4	0	0	0	0	
FR-2	HOSE BIBB	FES	GC	FES	BU-1070	1/2" FAUCET WITH 1/2" NPT FEMALE INLET AND 3/4" GARDEN HOSE THREADED OUTLET	1	1/2"			1.5	0	1.5	0	1.5	0	1.5	0	0	0	0	
HS-1A	RESTROOM HAND SINK	GC	GC	AMERICAN STANDARD	5024-001EC	ADA ACCESSIBLE WALL MOUNTED PORCELAIN LAVATORY PROVIDED WITH STANDARD CAPACITY (EMOTION) CONCEALED DRINK CARRIER BY WALL APPROVED ALTERNATE: KOLLEK 2024	2	0"	0"	2"	0	0	0	1	0	0	0	0	0	0	2	
HS-1B	RESTROOM HAND SINK FAUCET	FES	GC	FURNISHED BY KES	-	PLUG IN AUTOMATIC FAUCET WITH 1/2" GPM ADJUSTOR AND THE MAXIMUM SAVING WATER. AUTOMATIC FAUCET CONTROL FOR 10 SECOND SHOWER DELAY AND 30 SECOND TIME OUT DELAY	2	1/2"	1/2"	0"	1.5	1.5	2	0	3	3	4	0	0	0	0	
HS-2	RESTROOM HAND SINK	FES	GC	FURNISHED BY KES	-	STAINLESS STEEL SINK WITH WALL MOUNTING BRACKET AND BACKFLOW PREVENTER FAUCET WITH 1/2" GPM ADJUSTOR	4	1/2"	1/2"	2"	1.5	1.5	2	1	6	6	8	4	0	0	0	
IR-1	ICE MAKER - 10H	FES	GC	DEF ARCH	-	BACK OF HOUSE ICE MAKER WITH 8H STANDARD CAPACITY (EMOTION) ICE COOLERS	1	1/2"			1	0	1	0	1	0	1	0	0	0	0	
IR-2	ICE MAKER - 30DA	FES	GC	DEF ARCH	-	30DA MACHINE MOUNTED ICE MAKER (INTERNAL AIR COOLING)	1	1/2"			1	0	1	0	1	0	1	0	0	0	0	
MB-1A	MOP BASIN	GC	GC	RAY	MBS2420	PROVIDE 2" X 1/2" MALLEABLE IRON HORN. INSTALL MOP BASIN IN A BED OF GROUT TO THESE ARE NO VOICES BETWEEN THE MOP BASIN AND THE SLAB.	1	0"	0"	3"	0	0	0	3	0	0	0	0	0	0	3	
MB-1B	MOP BASIN FAUCET	FES	GC	FURNISHED BY KES	-	SERVICE SINK FAUCET WITH BUILT IN STOPS, LEVER HANDLES, AND WALL BRACK	1	1/2"	1/2"	0"	2.25	2.25	3	0	2.25	2.25	3	0	0	0	0	
RF-1	POD FILLER	FES	GC	FURNISHED BY KES	-	BRASS ADJUSTABLE FOOT FILLER W/ SELF-CLOSING FILLER VALVE AND 3/8" NPT FEMALE INLET	1	1/2"			1.5	0	1.5	0	1.5	0	1.5	0	0	0	0	
RF-1	POD FILLER	FES	GC	FURNISHED BY KES	-	BRASS ADJUSTABLE FOOT FILLER W/ SELF-CLOSING FILLER VALVE AND 3/8" NPT FEMALE INLET	1	1/2"			1.5	0	1.5	0	1.5	0	1.5	0	0	0	0	
RM-1	REZEZ PROOF ROOF HYDRANT	GC	GC	HOPFINN	2131R	AUTOMATIC C ORAINING, FREEZE PROOF ROOF HYDRANT WITH ANTI-SIPHON VACUUM BREAKER (HOPFINN PRODUCTS) MODEL 847-7935	1	3/4"			1	0	1	1	0	1	0	1	0	0	0	
SK-1	THREE COMPARTMENT SINK	FES	GC	FURNISHED BY KES	-	THREE COMPARTMENT WALL MOUNTED SINK FURNISHED WITH (1) 1/2" FEMALE INLET WITH 1/2" GPM ADJUSTOR	1	1/2"	1/2"	2"	4	4	4	5	4	4	4	4	0	0	0	0
SK-2	PREP SINK	FES	GC	FURNISHED BY KES	-	STAINLESS STEEL PREP TABLE WITH INTEGRAL PREP SINK, FURNISHED WITH 1/2" FEMALE FAUCET	1	3/4"	3/4"	2"	3	3	4	0	3	3	4	0	0	0	0	
TD-1	TRENCH DRAIN	GC	GC	DRAIN	2480 8001 8003	10" X 1/2" HOPE TRENCH DRAIN (CLOSED FROM 3.50" TO 4.70" WITH (2) CLOSED END CAPS (1) 4" NO-HUB BOTTOM OUTLET AND (1) 4" X 1/2" A BELL PROOF FLOORING GROUT SET DETAIL (3) (SEE FOR PRODUCTION TO 2" DRAIN CONNECTION)	1			2"	0	0	0	2	0	0	0	0	0	0	2	
TP-3	TRAP PRIMER (THREE FOUR FLOOR DRAIN)	GC	GC	PRECISION PLUMBING PRODUCTS	P-500 W/ 1/2" IN	TRAP PRIMER WITH INTEGRAL VACUUM BREAKER AND DISTRIBUTION (EMOTION) CAP (FURNISHED) (SEE UNIT) OUTLETS	2	1/2"			0	0	0	0	0	0	0	0	0	0	0	
WC-1	WATER CLOSET	GC	GC	KOHLER	K-3530 W/ 3/4" X 4-6666-6	WOMEN WATER CLOSET WITH OPEN FRONT SEAT. INSTALL THE SEWER ON THE TANK TO THE OPEN SIDE OF THE SEAT. (AND - AS TO THE MODEL # FOR SEAT) (SEE THE LISTING)	2	1/2"		3"	5	0	5	4	10	0	10	8	0	0	0	
WH-1	PROOF PROOF WALL HYDRANT	GC	GC	WOODFORD	MODEL-05	AUTOMATIC C ORAINING, FREEZE PROOF WALL HYDRANT WITH ANTI-SIPHON VACUUM BREAKER. PROVIDE WITH STEEL LING. ENOUGH TO REACH INSIDE THE TO BE IN A RE-LOCATE OF THE BUILDING.	1	3/4"			1	0	1	1	0	1	0	1	0	0	0	

WATER HEATER SCHEDULE - INSTANTANEOUS								
TAG	DESCRIPTION	FURNISHED BY	INSTALLED BY	MANUFACTURER	MODEL	INPUT MBH	DELIVERY	NOTES
DWH-1	DIRECT VENT GAS FIRRED INSTANTANEOUS WATER HEATER	GC	GC	NAVEN	NFC-240A2	199	1/4" GPM @ 67° RISE	RATED FLOW RATE: 3.6 GPM @ 67° RISE FORMAL DIRECT VENT PROVIDE WITH LEAD FREE "PULLME EASY" VALVE SET - GC SHALL PURCHASE WATER HEATER DIRECTLY THROUGH A MANUFACTURER AUTHORIZED DISTRIBUTOR (1-800-533-8794 OR WWW.NAVEN.COM) TO LOCATE AUTHORIZED DISTRIBUTOR
DWH-2	DIRECT VENT GAS FIRRED INSTANTANEOUS WATER HEATER	GC	GC	NAVEN	NFC-240A2	199	1/4" GPM @ 67° RISE	RATED FLOW RATE: 3.6 GPM @ 67° RISE FORMAL DIRECT VENT PROVIDE WITH LEAD FREE "PULLME EASY" VALVE SET - GC SHALL PURCHASE WATER HEATER DIRECTLY THROUGH A MANUFACTURER AUTHORIZED DISTRIBUTOR (1-800-533-8794 OR WWW.NAVEN.COM) TO LOCATE AUTHORIZED DISTRIBUTOR

NATIONAL
4035 Truman Blvd, Suite 290
Hilliard, Ohio 43026
Phone: (614) 751-6610
Fax: (614) 552-6240
Contact: Joe Jones
(614) 338-2024
jones@nationalengineering.com

FOR CONSTRUCTION

CHIPOTLE MEXICAN GRILL

CHIPOTLE MEXICAN GRILL, INC.
10000 W. CENTRAL EXP.
SUITE 100
DENVER, CO 80231
TEL: 303.733.9100
WWW.CHIPOTLE.COM

STORE NO.: 5479
HOPE VALLEY
7021 NC 251 HIGHWAY #903
DURHAM, NC 27707

OWNER: _____
ARCHITECT: _____
GENERAL CONTRACTOR: _____
MECHANICAL CONTRACTOR: _____
ELECTRICAL CONTRACTOR: _____
PLUMBING CONTRACTOR: _____
CONSTRUCTION SET: _____

DATE: _____
JOB: _____
SCALE: _____
SHEET NO.: 280206
PROJECT: _____
CONTRACT: _____
PLUMBING SCHEDULES
P600

LIGHTING CONTROL PANEL SCHEDULE: LCP

RELAY PANEL	CIRCUIT	AREA SERVED	CONTROL	TIME ON	TIME OFF	DIMMER CONTROL	NOTES
R1	A	22	KITCHEN A	TIMELOCK	7:00:00 AM	12:00:00 AM	N/A
R2	A	32	KITCHEN B	TIMELOCK	7:00:00 AM	12:00:00 AM	N/A
R3	A	30	SPARE	TIMELOCK	7:00:00 AM	12:00:00 AM	N/A
R4	A	30	DINING ROOM A	TIMELOCK	10:00:00 AM	12:00:00 AM	N/A
R5	A	30	DINING ROOM B	TIMELOCK	10:00:00 AM	12:00:00 AM	N/A
R6	A	30	SPARE	TIMELOCK	10:00:00 AM	12:00:00 AM	N/A
R7	A	28	RESTROOM CHAIST	TIMELOCK	7:00:00 AM	12:00:00 AM	N/A
R8	A	40	EXIT LIGHTING/STAIRS	TIMELOCK	SUNSET - 1 HR	12:00:00 AM	N/A

LIGHTING CONTROL COMPONENTS SCHEDULE

DESCRIPTION	QUANTITY	FURNISHED BY	BY	MANUFACTURER	MODEL	REMARKS
RELAY CONTROL PANELS	1	TLS	GC	SECURITY	APP. INTERCOM RELAY BOARD FOR THE LCP	BY RELAY PANEL FOR DIMMING CONTROL, WITH FLOOR MOUNT, PROGRAMMER, AND DIGITAL TIME CLOCK
WALL MOUNTED OVERBID SWITCH (4 CHANNEL)	1	TLS	GC	SECURITY	PERSONAL CP-W4	SEE LIGHTING CONTROL DIAGRAM FOR SWITCH CONFIGURATION
WALL MOUNTED DIMMER SWITCH	2	TLS	GC	COOPER	SL-00P-W	SLIDE DIMMER COMPATIBLE WITH UP TO 300W LED LIGHTING. SET AT 50% OF DINING ROOM LIGHTS FLUORESCENT AT THIS DIMMER SETTING. THIS GC SHALL PROVIDE AUTION DIALS IF DIMMER AS SUPPLEMENT
WALL MOUNTED LINE VOLTAGE OCCUPANCY SENSOR	3	TLS	GC	HUBBELL	HUMTS 1-R-W4	WHITE DIAL, TECHNOLOGY SINGLE RELAY WITH 1 BUTTON AND NEUTRAL ANTI-P

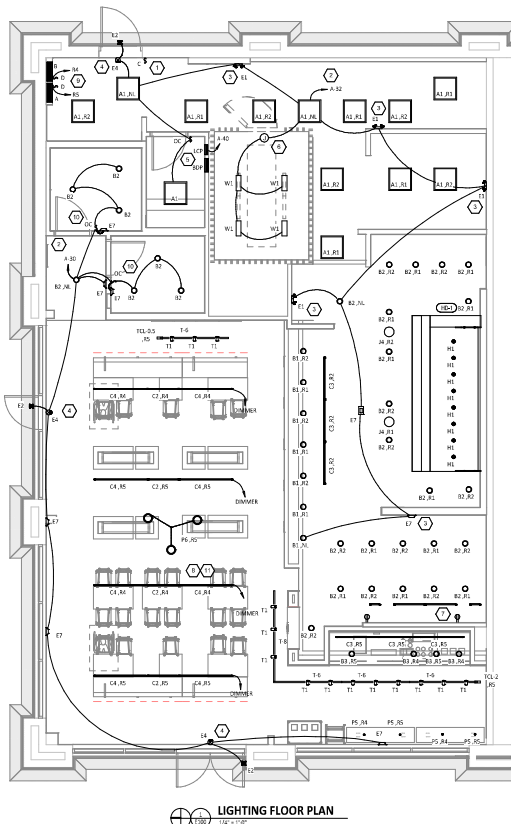
LIGHTING FIXTURE SCHEDULE

TAG	QUANTITY	TYPE	MOUNT	FURNISHED BY	INSTALLED BY	MANUFACTURER	MODEL	(S) STOCK	LAMPS	VOLTS	WATTS	SPECIAL REQUIREMENTS
A1	13	2x2 LED RECESSED TROFFER	RE-16	GC	GC	NORA LIGHTING	NR05-02234-07	13	3000K LED	120	17	COMPATIBLE WITH 100% DIMMING, FACTORY LOCKED TO 3000K
B1	7	RECESSED CAN LIGHT	CEILING	TLS	GC	NORA LIGHTING	NR05-02241-WP	13	37W BLOSSOM 600-PAR38 31-GU24 2IN. LED (E2-2700K W, GU-24 BASE	120	17	LED TRIM FURNISHED WITH GLASS SOCKET ADAPTER
B2	30	RECESSED CAN LIGHT W/ LED TRIM	CEILING	TLS	GC	NORA LIGHTING	NR05-02241-WP	13	37W BLOSSOM 600-PAR38 31-GU24 2IN. LED TRIM	120	17	BLACK LED TRIM FURNISHED WITH GLASS SOCKET ADAPTER
B3	4	RECESSED CAN LIGHT W/ BLACK LED TRIM	CEILING	TLS	GC	NORA LIGHTING	NR05-02241-WP	13	37W BLOSSOM 600-PAR38 31-GU24 2IN. LED TRIM	120	17	FURNISHED WITH COVER, CONNECTORS, AND ONE HARWARE BOX OR CORRELATING PIR SECTION
C0	2	LOW PROFILE LED - 1 FT	SURFACE	TLS	GC	HERA LIGHTING	HL-E0072/WW	13	RETRORAL 3000K LED	120	5	FURNISHED WITH COVER, CONNECTORS, AND ONE HARWARE BOX OR CORRELATING PIR SECTION
C2	6	LOW PROFILE LED - 3 FT	SURFACE	TLS	GC	HERA LIGHTING	HL-E0074/WW	13	RETRORAL 3000K LED	120	12	FURNISHED WITH COVER, CONNECTORS, AND ONE HARWARE BOX OR CORRELATING PIR SECTION
C3	6	LOW PROFILE LED - 4 FT	SURFACE	TLS	GC	HERA LIGHTING	HL-E0076/WW	13	RETRORAL 3000K LED	120	15	FURNISHED WITH COVER, CONNECTORS, AND ONE HARWARE BOX OR CORRELATING PIR SECTION
C4	4	LOW PROFILE LED - 5 FT	SURFACE	TLS	GC	HERA LIGHTING	HL-E0078/WW	13	RETRORAL 3000K LED	120	18	FURNISHED WITH COVER, CONNECTORS, AND ONE HARWARE BOX OR CORRELATING PIR SECTION
B3	4	EMERGENCY LIGHT - DUAL HEAD	VARIOUS	TLS	GC	EXTRONIX	EL-90	13	SPECIAL LED	120	2	30 WATTRE BATTERY BACKUP
B3	3	EXTERIOR REMOTE EMERGENCY LIGHT	VARIOUS	TLS	GC	EXTRONIX	ME-03-R-WP	13	SPECIAL LED	4	1	LOW VOLTAGE REMOTE EMERGENCY LIGHT POWERED BY REMOTE-CAPABLE BATTERY WITH ADJUSTING BLEND
B4	3	WHITE LED SIGN WITH EMERGENCY LIGHT - STANDARD PLED LETTERS	VARIOUS	TLS	GC	EXTRONIX	CLEP-U-AN	13	SPECIAL LED	120	2	30 WATTRE BATTERY BACKUP WITH REMOTE EMERGENCY LIGHT, REMOTE HEAD CAPABLE
B7	8	EMERGENCY LIGHT - HOOD LIGHT	VARIOUS	TLS	GC	DEAL-IT	ELP	13	W/ RETRORAL LED	120	1	30 WATTRE BATTERY BACKUP
B7	8	EMERGENCY LIGHT - HOOD LIGHT	SURFACE	THC/TLS	TLS	VAPOR PROOF LIGHT FIXTURE FURNISHED WITH HOOD	FURNISHED WITH HOOD	13	TOP: L6A-1915174	120	23	FIXTURE LAMP TANGLED SEPARATELY BY LIGHTING SUPPLIER
J4	2	DECORATIVE PENDANT	SURFACE	TLS	GC	BAUNITE	BLE-C-18W-100-ADJ-18R-10-10W-100W	13	GREEN CREATIVE BA1910W/22705242P	120	9	WITH BLACK LAMPHOLD, BLACK CORD, AND DIM ADAPTER
P5	4	PENDANT	SURFACE	TLS	GC	BR-LITE WFG	BR-LITE WFG	13	TOP: P63504027000	120	5	ADJUST FORTH FOR MOUNTING HEIGHT CALLED IN ARCHITECTURAL DRAWINGS
P6	1	DECORATIVE DINING ROOM PENDANT	SURFACE	TLS	GC	BAUNITE	BLE-C-18W-100-ADJ-18R-10-10W-100W	13	RETRORAL LED	120	10	MOUNTED SET OF 10 HEADS WITH UNIVERSAL CANOPY AND STANDARD BLACK CABLE
T1	14	TRACK HEAD	TRACK	TLS	GC	LRAD	LRAD-300-3000-300W-18W-18W	13	RETRORAL LED	120	10	BLACK CLUSTER TRACK HEAD W/ UNIVERSAL TRAC ADAPTER AND INSIDE LIGHT BEAM
T-6	4	TRACK (6 FEET)	SURFACE	TLS	GC	LRAD	T-6PT-3P	N/A	120	0	SINGLE CIRCUIT, BLACK FINISH	
T-8	1	TRACK (8 FEET)	SURFACE	TLS	GC	LRAD	T-8PT-3P	N/A	120	0	SINGLE CIRCUIT, BLACK FINISH	
TG-0.5	1	CURRENT LIMITER (0.50A)	SURFACE	TLS	GC	LRAD	TG-M18-18-WF-1000-0.5A	N/A	120	0	BLACK CURRENT LIMITING END FEED	
TG-2	1	CURRENT LIMITER (2.00A)	SURFACE	TLS	GC	LRAD	TG-M18-18-WF-1000-2A	N/A	120	0	BLACK CURRENT LIMITING END FEED	
W1	4	WIRE LED FXTURE	SURFACE	MCS	GC	FURNISHED WITH WIC	FURNISHED WITH WIC	120	20	WET-BATE COOLER FIXTURE		

- A. FLUORESCENT LAMPS NOT INCLUDED IN THE FIXTURE ARE TO BE MANUFACTURED BY SYLVANIA UNLESS OTHERWISE NOTED. PHOSPHOR FLUORESCENT LAMPS WILL BE AN ACCEPTABLE ALTERNATE.
- B. USE THE ABOVE FIXTURES, NOT LISTED, IN THE PLAN FOR EXACT LIGHT LOCATIONS.
- C. USE THE ABOVE FIXTURES, NOT LISTED, IN THE PLAN FOR EXACT LIGHT LOCATIONS.

ELECTRICAL LIGHTING PLAN NOTES

1. INSTALL WALL MOUNTED LIGHTING OVERHEAD SWITCH AND CONNECT TO LCP AS SHOWN IN DETAIL E-3710
2. FOR UNLOCATED LIGHT FIXTURES, CONNECT TO RELAY CIRCUIT INDICATED NEXT TO THE FIXTURE TAG THROUGH THE LIGHTING CONTROL PANEL. (CHECK NOTES OTHERWISSE. WALL MOUNT THE EMERGENCY LIGHT FIXTURE AT 4' BELOW THE CEILING UNLESS NOTED OTHERWISE)
3. VERIFY MOUNTING HEIGHT OF EXIT SIGN PRIOR TO INSTALL. EXIT SIGN MUST BE VISIBLE FROM AREA SERVED BY THE BUILDING SYSTEMS HAVE BEEN INSTALLED. SEE ARCHITECTURAL ELEVATIONS FOR FURTHER INFORMATION.
4. VERIFY MOUNTING HEIGHT OF EXIT SIGN PRIOR TO INSTALL. EXIT SIGN MUST BE VISIBLE FROM AREA SERVED BY THE BUILDING SYSTEMS HAVE BEEN INSTALLED. SEE ARCHITECTURAL ELEVATIONS FOR FURTHER INFORMATION.
5. INSTALLED LIGHTING CONTROL SYSTEM PER DETAIL E-3710
6. INSTALL LIGHT FIXTURES FURNISHED WITH THE WALL-IN COOLER. PROVIDE UNSWITCHED CONNECTION FROM LIGHTING CIRCUIT TO WALL-IN COOLER LIGHTING HOOD AND FROM HOOD TO LIGHT FIXTURE AS SHOWN. COOLER LIGHTING FIXTURES SHALL BE LOCATED ON THE INTERIOR OF THE WALL-IN COOLER. COOLER LIGHTING FIXTURES WHERE THEY PASS THROUGH THE WALL-IN COOLER ENVELOPE PER THE IBC.
7. PROVIDE LED COOLER FIXTURES FOR UNDERCOUNTER LIGHTING AS SHOWN. CONNECT TO SWITCHED LEG OF THE LIGHTING CIRCUIT. SEE LOCATION ON SHEET FOR COOLER HEADPLATE LOCATIONS, HEIGHTS, AND CIRCUITING. INSTALL RECEPTACLES IN A HORIZONTAL ORIENTATION.
8. PROVIDE UNSWITCHED AS SHOWN ON THE ARCHITECTURAL. SEE PER THE ARCHITECTURAL ARCHITECTURAL SYMBOL.
9. INSTALL WALL MOUNTED DIMMERS ABOVE PANELBOARDS AT 40" ABOVE CEILING FOR CONTROL OF DINING ROOM OVERHEAD STEP LIGHTS. CONNECT DIMMERS TO RELAYS SHOWN THROUGH THE LIGHTING CONTROL PANEL. SET DIMMERS AT 50%.
10. INSTALL WALL MOUNTED OCCUPANCY SENSOR FURNISHED BY LISTED SUPPLIER AT 40" ABOVE OCCUPANCY SENSOR TO PROVIDE AUTOMATIC ON/OFF OPERATION OF LIGHTING WHEN SENESOR ENABLED.
11. CONNECT DINING ROOM RELAY CIRCUITS RA, P01 OVERHEAD STEP LIGHT TO THE RELAY INDICATED THROUGH THE CORRESPONDING WALL MOUNTED DIMMER INSTALLED ABOVE THE PANELBOARDS.



NATIONAL
 4035 Treuman Blvd, Suite 250
 Hilliard, Ohio 43026
 Phone: (614) 751-6610
 Fax: (614) 552-6240
 Contact: Joe Jones (614) 338-2024
 jones@nationalengineering.com

FOR CONSTRUCTION

CHIPOTLE
 MEXICAN GRILL

CHIPOTLE MEXICAN GRILL, INC.
 4000 W. 15TH AVENUE, SUITE 200
 DENVER, CO 80202
 (303) 733-1000
 (303) 733-1000

STORE NO.: 5479
 HOPE VALLEY
 7021 NC 751 HIGHWAY 4903
 DURHAM, NC 27707

DATE: 10/20/2016
 TIME: 10:00 AM
 PROJECT: 16010000000000000000
 SHEET: 16010000000000000000
 DRAWN: JONES
 CHECKED: JONES
 APPROVED: JONES

ELECTRICAL LIGHTING PLAN
E100

