

Report By:

National TAB  
1329 E. KEMPER ROAD  
SUITE 4210  
CINCINNATI, OH 45246



**Report: TAB REPORT**  
**Function: Test, Adjust, & Balance**  
**Date: 12/08/2023**

# PROJECT

**12-04-23 FREDDYS - INDIANAPOLIS, IN  
(96TH ST)**

8235 East 96th Street

INDIANAPOLIS, IN 46256

Client

ICT, LLC

4739 Grand Haven Lane, Unit F

Indianapolis, IN 46280

# National TAB

Project: 12-04-23 FREDDYS - INDIANAPOLIS, IN (96TH ST)

## Table Of Contents

<b>Section</b>	<b>Page #</b>
Summary	3
Remarks	4
Balance Schedule	8
Checklist Data	9
FAN - Exhaust	25
Kitchen Hood Type I	28
AHU/RTU	30
GRD Layout	33
AHU/RTU	34

## Project Summary

The summary below provides a quick understanding of our scope of work and general testing procedures. Enclosed in the report is further detail about your building performance including recommendations, asset data, and pictures. Our focus is to work with the trades to remedy any issues or deficiencies during the actual field balancing and not after the balancing has occurred to achieve a positive environment and outcome. The level of success is determined by the availability of the trades, possible parts needed, or time constraints.

### RTU's (Roof Top Units) w/ Diffusers

Each of the RTU's were measured at their terminal devices or via traverse to establish a total flow for that unit. Each RTU was adjusted to within tolerance of the engineer's design flow. Each outlet was then adjusted to within tolerance of the design flow. Outside air was measured by reading the intake air opening with a velocity grid and multiplying by the free area. The outside air damper was adjusted until the airflow was within the design requirements. Any equipment that fell outside of that tolerance is noted throughout the report.

### Kitchen Exhaust Hood & Associated Fans

Each kitchen exhaust fan was measured at the hood filter bay utilizing a velocity matrix and a manufacturer's correction factor. Each filter velocity is multiplied by the manufacturer's corrected area. The sum of these readings equals the total flow of the exhaust fans. The total flow of the exhaust was then adjusted to within tolerance of the design flow. . Any EF's that fell outside of this tolerance is noted throughout the report.

### General Exhaust Fans w/ Grilles

The general exhaust fans were measured by reading each air device with a flow hood. The total airflow for each fan is equivalent to the sum of these readings. Fan speed was then adjusted so that the airflow was within tolerance of design. Each terminal device was balanced to within tolerance of the design volume using the installed volume dampers. Any equipment that fell outside of this tolerance is noted throughout the report.

### Final Building Tests

After completing the test and balance the final building pressure was measured. It was confirmed that the building pressure fell within acceptable tolerances of  $-0.02''$  wc to  $+0.02''$  wc and that the pressure measurement coincides with the actual and design net airflow. Any deviations from these standards are noted throughout the report.

The hood capture was tested at the perimeter of the hood and the cook top level with the equipment heat on to ensure satisfactory hood capture and containment.

## Issue List

- OA filters for RTU-1/RTU-2 missing
- RTU-1/RTU-2 final filters dirty
- RTU-1/RTU-2 Thermostats are not Programmable.



**12-04-23 FREDDYS - INDIANAPOLIS, IN (96TH ST)**

**Project Issue Information**

**Issue Name :** OA filters for RTU-1/RTU-2 missing  
**Description :** OA filters are not installed for RTU-1/RTU-2 dining room Carrier units. Recommend installing correct size OA mesh filter.  
**Created By :** National TAB                      **Assigned To :** National TAB - Dylan Crisman  
**Status :** Open  
**Priority :**    **Asset Tag :**  
**Originated Date :** 12/05/2023 - Dylan Crisman - National TAB

Project Issue File Details



**RTU-1  
12/05/2023**



**RTU-2(2)  
12/05/2023**



**12-04-23 FREDDYS - INDIANAPOLIS, IN (96TH ST)**

**Project Issue Information**

**Issue Name :** RTU-1/RTU-2 final filters dirty  
**Description :** Recommend replacing final filters with correct 16x16x2 pleated filters. Current ones are dirty.  
**Created By :** National TAB                      **Assigned To :** National TAB - Dylan Crisman  
**Status :** Open  
**Priority :**    **Asset Tag :**  
**Originated Date :** 12/05/2023 - Dylan Crisman - National TAB

Project Issue File Details



**RTU-2(2)**  
**12/05/2023**



**RTU-1**  
**12/05/2023**



## 12-04-23 FREDDYS - INDIANAPOLIS, IN (96TH ST)

### Project Issue Information

**Issue Name :** RTU-1/RTU-2 Thermostats are not Programmable.  
**Description :** RTU-1/RTU-2, No program settings on thermostats besides setting the Date and Time. Those have been set. Thermostats also don't have a program mode for "follow schedule" Cannot set schedule for Carrier Units. Temperature had to be manually set. DOAS-1 unit, schedule and temperatures have been set.

**Created By :** National TAB                      **Assigned To :** National TAB - Dylan Crisman

**Status :** Open

**Priority :**    **Asset Tag :**

**Originated Date :** 12/05/2023 - Dylan Crisman - National TAB

### AIR BALANCE SCHEDULE

UNIT	AREA SERVED	HVAC SUPPLY		HVAC RETURN		HVAC OUTDOOR		OA %		HOOD MAKE-UP		HOOD EXHAUST		GENERAL EXH.	
		DESIGN	ACTUAL	DESIGN	ACTUAL	DESIGN	ACTUAL	DESIGN	ACTUAL	DESIGN	ACTUAL	DESIGN	ACTUAL	DESIGN	ACTUAL
RTU-1	DINING	2400	2382	2100	2065	300	317	12.5%	13.3%						
RTU-2	DINING	2400	2222	2100	1921	300	301	12.5%	13.5%						
DOAS-1	KITCHEN	2200	2297	0	0	2200	2297	100.0%	100.0%						
KEF-1	HOOD											1600	1563		
KEF-2	HOOD											775	763		
EF-1	RESTROOM													225	213
<b>TOTALS</b>		7000	6901	4200	3986	2800	2915			0	0	2375	2326	225	213

#### NET BUILDING AIRFLOW CALCULATION

TOTALS	DESIGN	ACTUAL
TOTAL OA	2800	2915
TOTAL EXHAUST	2600	2539
<b>NET AIRFLOW</b>	200	376

DOOR TESTED	BUILDING PRESSURE MEASUREMENTS (IN. H2O)
FRONT	0.0044
SIDE	-
REAR	0.0127
<b>AVERAGE</b>	<b>0.0086</b>

#### FINAL CHECKS

- ACTUAL NET AIRFLOW COINCIDES WITH DESIGN: ✓

---

- MEASURED PRESSURES COINCIDES WITH ACTUAL NET AIRFLOW: ✓

---

- PRESSURE FALLS WITHIN IMC TOLERANCE OF +/-0.02" W.C. ✓

NOTES:

## CheckList List

- TECH - SITE PICTURES
- TECH - STEP 1: INITIAL SITE WALKTHROUGH
- TECH - STEP 2: UNIT DATA AND EVAL
- TECH - STEP 3: TEST, ADJUST AND BALANCE
- TECH - STEP 4: FINAL TESTS





**DOAS-1**  
**12/04/2023**

---

RTU-2

**Comment:**



**RTU-2(2)**  
**12/04/2023**

---

DOAS-1

**Comment:**



**RTU-3(2)**  
**12/04/2023**

---

KEF-1

**Comment:**



**EF-1**  
**12/04/2023**

---

KEF-2

**Comment:**



**EF-2**  
**12/04/2023**

---

EF-1

**Comment:**



**EF-3**  
**12/04/2023**

---

HOOD-1

**Comment:**

---

HOOD-2

**Comment:**



**HD-2**  
**12/04/2023**



## 12-04-23 FREDDYS - INDIANAPOLIS, IN (96TH ST)

### CheckList Information

**Name :** TECH - STEP 1: INITIAL SITE WALKTHROUGH      **Status :** Completed  
**Assigned Organization :** National TAB      **Asset :**  
**Requesting Organization :** National TAB  
**Created Date :** 11/28/2023 - Brian Turnbough - National TAB  
**Completed Date :**

### CheckList Item Details

#### INITIAL SITE WALKTHROUGH

All diffusers and grilles are installed and match design? Yes

**Comment:**

All hood filters installed and accounted for? Yes

**Comment:**

Hoods are wired and have power? Yes

**Comment:**

Hood is free of alarms? Yes

**Comment:**

Thermostats have power? Yes

**Comment:**

Have trades/general contractor been notified about any issues and are they created on FaciliBuild?

**Comment:**

Yes



## 12-04-23 FREDDYS - INDIANAPOLIS, IN (96TH ST)

### CheckList Information

**Name :** TECH - STEP 2: UNIT DATA AND EVAL **Status :** Completed  
**Assigned Organization :** National TAB **Asset :**  
**Requesting Organization :** National TAB  
**Created Date :** 11/28/2023 - Brian Turnbough - National TAB  
**Completed Date :**

### CheckList Item Details

#### UNIT DATA AND EVALUATION WHILE GATHERING UNIT DATA CHECK THE FOLLOWING:

##### RTU's/AHU's

Economizers are assembled and functional? Yes

##### Comment:

DCV Max damper opening position is set to minimum? Yes

##### Comment:

Free cooling enthalpy set point set for lowest setting (Typically "D") Yes

##### Comment:

Motors are all operating below the FLA rating? Yes

##### Comment:

Are belts tight?

##### Comment:

Yes

If direct drive unit is the speed controller working.

**Comment:**

Yes

---

Is gas piping installed and valves turned on?

Yes

---

**Comment:**

---

Unit free of noticeable noise and vibration

Yes

---

**Comment:**

---

**EF's**

---

Rotation is correct?

Yes

---

**Comment:**

---

Belts are tight?

---

**Comment:**

Yes

---

Grease cup installed on hood fan?

Yes

---

**Comment:**

---

Hinge kit installed installed on hood fan?

Yes

---

**Comment:**

---

Lean fan back. Is grease duct installation adequate and is duct ran all the way to the base of the fan?

Yes

---

**Comment:**

---



EF-2  
12/04/2023



EF-2  
12/04/2023

Flex conduit is long enough so that fan can be completely tilted back?

Yes

**Comment:**

There is no major leakage around base of fan?

No

**Comment:**

Is the motor operating below the motor FLA rating?

Yes

**Comment:**

For restroom fan(s) is the back draft damper installed and can it fully open?

Yes

**Comment:**



EF-1  
12/04/2023

Unit free of noticeable noise and vibration?

Yes

**Comment:**

---

**MUA**

Rotation is correct?

**Comment:**

Gas piping is installed and valves are in on position?

**Comment:**

Heater tested and is functional?

**Comment:**

Internal motorized damper is fully opening?

**Comment:**

Motor is operating below the FLA rating?

**Comment:**

Unit free of noticeable noise and vibration?

**Comment:**

---

**HOODS**

Kitchen equipment installed in proper places?

Yes

**Comment:**

Can kitchen equipment be turned on for final smoke test?

Yes

**Comment:**

---

**DOCUMENTATION**

Have trades/general contractor been notified about any issues and are they created on FaciliBuild?

Yes

Comment:



## 12-04-23 FREDDYS - INDIANAPOLIS, IN (96TH ST)

### CheckList Information

**Name :** TECH - STEP 3: TEST, ADJUST AND BALANCE      **Status :** Completed  
**Assigned Organization :** National TAB      **Asset :**  
**Requesting Organization :** National TAB  
**Created Date :** 11/28/2023 - Brian Turnbough - National TAB  
**Completed Date :**

### CheckList Item Details

**TEST, ADJUST, AND BALANCE ALL EQUIPMENT:**

**DURING TESTING MAKE NOTE OF THE FOLLOWING:**

Is space free of drafting? Yes

**Comment:**

Is space comfortable in all areas? Yes

**Comment:**

Is the space free of ventilation noise? Yes

**Comment:**

If deviations from design were necessary to resolve 1-3 what were they? Otherwise put "NA".

**Comment:**

NA



## 12-04-23 FREDDYS - INDIANAPOLIS, IN (96TH ST)

### CheckList Information

**Name :** TECH - STEP 4: FINAL TESTS **Status :** Completed  
**Assigned Organization :** National TAB **Asset :**  
**Requesting Organization :** National TAB  
**Created Date :** 11/28/2023 - Brian Turnbough - National TAB  
**Completed Date :**

### CheckList Item Details

#### FINAL TESTS

#### HOOD CAPTURE TEST

List equipment turned on for testing

**Comment:**

Griddle, Fryer.

List smoke candle type used

**Comment:**

S102 CE0163 45 second 150 CF

Smoke test capture - Perimeter of hood

**Comment:**

100%

Smoke test capture - Top of cooking surface

**Comment:**

100%

#### WITNESS

Date test was completed

**Comment:**

---

TAB tech name / Firm

**Comment:**

---

Dylan Crisman / National TAB Intelligence

---

Site super name / Firm

**Comment:**

---

Chuck Young

---

Owner representative name / Firm (if Applicable)

**Comment:**

---

Building pressure at front & back doors (All Systems On)

**Comment:**

---

0.0086"

---

**ADDITIONAL**

---

Do actual net building airflow, design net building airflow, and pressure coincide? If not why? (All three should either be positive or negative)

**Comment:**

---

Yes

---

Thermostats are programmed?

No

**Comment:**

---

# National TAB

Project: 12-04-23 FREDDYS - INDIANAPOLIS, IN (96TH ST)

## System/Unit: FAN - Exhaust



Asset: EF1

AREA:

Unit Data		
	Design	Actual
MFG	GREENHECK	TCF
Model Num	CUE-080-1VG119XQD	VCU-089
Serial Num	-	54482-1-00001
Type	-	CENTRIFUGAL
Configuration	-	VERTICAL

Motor Data		
	Design	Actual
Motor MFG	-	MCMILLAN
Frame	-	NL
Horsepower	-	0.17
Motor Rpm	-	1800
Phase	-	1
Voltage (rated)	-	115
Amperage (rated)	-	2.6
Service Factor	-	1.15

Test Data		
	Design	Actual
CFM	225	[2] 213
Fan RPM	-	1260
Fan Rotation	-	CCW
Motor RPM	-	1260
System SetPt	-	[1]70% @ DIAL ON MOTOR
RL Voltage	-	NA
RL Amperage	-	NA
Total ESP	-	0.16"
Fan Inlet SP	-	-0.16"
Fan Discharge SP	-	ATM

Completed By: Dylan Crisman on 12/05/2023

Notes:

- [1]SET at 70% via speed dial on motor.
- [2]MENS RR AT 144/150
- WOMENS RR AT 69/75
- 213/225 TOTAL.

Written By: Dylan Crisman on 12/05/2023

# National TAB

Project: 12-04-23 FREDDYS - INDIANAPOLIS, IN (96TH ST)

## System/Unit: FAN - Exhaust



Asset: KEF1

AREA:

Unit Data		
	Design	Actual
MFG	CAPTIVEAIRE	CAPTIVEAIRE
Model Num	CASRE18DD	CASRE18DD
Serial Num	-	5791906
Type	-	UTILITY
Configuration	-	VERTICAL

Motor Data		
	Design	Actual
Motor MFG	-	TECO- WESTINGHOUSE
Frame	-	145T
Horsepower	-	1.0
Motor Rpm	-	1150
Phase	-	3
Voltage (rated)	-	230
Amperage (rated)	-	3.44
Service Factor	-	1.15

Drive Data		
	Design	Actual
Motor Sheave Size	-	DD
Motor Bore Size	-	DD
Motor Sheave SetPt	-	49.7Hz
Fan Sheave Size	-	DD
Fan Sheave Bore	-	DD
Belt CL Distance	-	DD
Num of Belts	-	DD
Belt Size	-	DD

Test Data		
	Design	Actual
CFM	-	1563
Fan RPM	-	935
Fan Rotation	-	CCW
Motor RPM	-	935
RL Voltage	-	NA
RL Amperage	-	NA
Suction ESP	-	NA
Discharge ESP	-	ATM
Total ESP	-	NA

Completed By: Dylan Crisman on 12/05/2023

# National TAB

Project: 12-04-23 FREDDYS - INDIANAPOLIS, IN (96TH ST)

## System/Unit: FAN - Exhaust



Asset: KEF2

AREA:

Unit Data		
	Design	Actual
MFG	CAPTIVEAIRE	CAPTIVEAIRE
Model Num	DU50HFA	DU50HFA
Serial Num	-	5791906
Type	-	UPBLAST
Configuration	-	VERTICAL

Motor Data		
	Design	Actual
Motor MFG	-	TELCO-GREEN
Frame	-	NL
Horsepower	-	0.500
Motor Rpm	-	1800
Phase	-	1
Voltage (rated)	-	115
Amperage (rated)	-	6.3
Service Factor	-	1.15

Test Data		
	Design	Actual
CFM	-	763
Fan RPM	-	954
Fan Rotation	-	CCW
Motor RPM	-	954
System SetPt	-	53%
RL Voltage	-	NA[1]
RL Amperage	-	NA[1]
Total ESP	-	NA
Fan Inlet SP	-	NA[1]
Fan Discharge SP	-	ATM

Completed By: Dylan Crisman on 12/05/2023

Notes:

[1]Utility Fan, No access point for static pressure, volts, and amps.

Written By: Dylan Crisman on 12/05/2023

# National TAB

Project: 12-04-23 FREDDYS - INDIANAPOLIS, IN (96TH ST)

## System/Unit: Kitchen Hood Type I



Asset: HD1

AREA:

Unit Data		
	Design	Actual
MFG	CAPTIVEAIRE	CAPTIVEAIRE
Model Num	5424--ND-2ACPSP-F	5424--ND-2ACPSP-F
Job / Serial Num	-	5791906
Type	-	TYPE I CANOPY
Hood length	-	96"
Hood Width	-	54"

Test Data Exhaust		
	Design	Actual
Filter Type	-	CAPTRATE SOLO
Filter Size 1	-	16X16
Filter Qty 1	-	5
Filter AK factor size 1	-	1.62
Filter Total AK Area	-	8.1
Filter1 FPM	-	192
Filter2 FPM	-	204
Filter3 FPM	-	191
Filter4 FPM	-	202
Filter5 FPM	-	179
Filter Ave FPM(corr)	-	193
CFM	-	1563

Cooking Equipment		
	Design	Actual
Item 1	-	GRIDDLE

Completed By: Dylan Crisman on 12/04/2023

# National TAB

Project: 12-04-23 FREDDYS - INDIANAPOLIS, IN (96TH ST)

## System/Unit: Kitchen Hood Type I



Asset: HD2

AREA:

Unit Data		
	Design	Actual
MFG	CAPTIVEAIRE	CAPTIVEAIRE
Model Num	5424--ND-2ACPSP-F	5424--ND-2ACPSP-F
Job / Serial Num	-	5791906
Type	-	TYPE I CANOPY
Hood length	-	60"
Hood Width	-	54"

Test Data Exhaust		
	Design	Actual
Filter Type	-	CAPTRATE SOLO
Filter Size 1	-	16X16
Filter Qty 1	-	3
Filter AK factor size 1	-	1.62
Filter Total AK Area	-	4.86
Filter1 FPM	-	154
Filter2 FPM	-	161
Filter3 FPM	-	156
Filter Ave FPM(corr)	-	157
CFM	-	763

Cooking Equipment		
	Design	Actual
Item 1	-	FRYER

Completed By: Dylan Crisman on 12/04/2023

# National TAB

Project: 12-04-23 FREDDYS - INDIANAPOLIS, IN (96TH ST)

System/Unit: AHU/RTU



Asset: DOAS1

AREA:

Unit Data		
	Design	Actual
MFG	CAPTIVEAIRE	CAPTIVEAIRE
Serial Num	-	57891906
Model Num	CASRTU3-1.250-15-15T	CASRTU3-1.250-15-15T
Type	DOAS	DOAS
Configuration	VERTICAL	VERTICAL
Num OA Filters 1	-	4
OA Filter Size 1	-	16X25
Num Final Filter 1	-	8
Final Filter Size 1	-	20X25X2

Motor Data		
	Design	Actual
Motor MFG	-	TECO-WESTINGHOUSE
Frame	-	145T
Horsepower	-	2.0
Motor Rpm	-	1740
Phase	-	3
Rated Voltage	-	230
Rated Amperage	-	5.48

Drive Data		
	Design	Actual
Motor Sheave Size	-	DD
Motor Bore Size	-	DD
Motor Sheave SetPt	-	50Hz
Fan Sheave Size	-	DD
Fan Sheave Bore	-	DD
Belt CL Distance	-	DD
Num of Belts	-	DD
Belt Size	-	DD
Belt Alignment	-	DD

Test Data		
	Design	Actual
SF CFM	2200	2297
SF RPM	-	1449
RA CFM	0	0
OA CFM	2200	2297
RL Voltage	-	149
RL Amperage	-	4.5
SF Rotation	-	CW
RA Damper Position	-	0%
Min OA Damper Position	-	100%
Min OA Damper Type	-	ECONOMIZER
OA Enthalpy Setpt	-	D

Performance Data		
	Design	Actual
MA Plenum SP	-	NA
Fan Suction SP	-	NA
Fan Discharge SP	-	NA
Total ESP	-	NA
Fan Total SP	-	NA

General		
	Design	Actual
Fan Rotation Correct	-	YES
Unit Filters Clean	-	YES
Condensate Drain Installed	-	YES

Completed By: Dylan Crisman on 12/05/2023

# National TAB

Project: 12-04-23 FREDDYS - INDIANAPOLIS, IN (96TH ST)

## System/Unit: AHU/RTU



Asset: RTU1

AREA:

Unit Data		
	Design	Actual
MFG	TRANE	CARRIER
Serial Num	-	0315C83875
Model Num	YSC072E	48TCEA07A2A5
Type	-	RTU
Configuration	-	VERTICAL
Num OA Filters 1	-	1
Num Final Filter 1	-	4
Final Filter Size 1	-	16X16X2

Motor Data		
	Design	Actual
Motor MFG	-	MARATHON
Frame	-	56Hz
Horsepower	-	NL
Motor Rpm	-	1725
Phase	-	3
Rated Voltage	-	208
Rated Amperage	-	8.4

Drive Data		
	Design	Actual
Motor Sheave Size	-	4.5"
Motor Bore Size	-	7/8"
Motor Sheave SetPt	-	0 TURNS OPEN
Fan Sheave Size	-	5.25"
Fan Sheave Bore	-	5/8"
Belt CL Distance	-	14.75"
Num of Belts	-	1
Belt Size	-	AX41
Belt Alignment	-	VERIFIED

Test Data		
	Design	Actual
SF CFM	2220	2382
SF RPM	-	1532
RA CFM	-	2065
OA CFM	-	317
RL Voltage	-	215
RL Amperage	-	6.1/6.5/6.2
SF Rotation	-	CW
RA Damper Position	-	80%
Min OA Damper Position	-	20%
Min OA Damper Type	-	ECONOMIZER
OA Enthalpy Setpt	-	D

Performance Data		
	Design	Actual
MA Plenum SP	-	-0.67"
Fan Suction SP	-	-1.16"
Fan Discharge SP	-	0.50"
Total ESP	-	1.17"
Fan Total SP	-	1.66"

General		
	Design	Actual
Fan Rotation Correct	-	YES
Unit Filters Clean	-	NO
Condensate Drain Installed	-	YES

Completed By: Dylan Crisman on 12/05/2023

# National TAB

Project: 12-04-23 FREDDYS - INDIANAPOLIS, IN (96TH ST)

## System/Unit: AHU/RTU



Asset: RTU2

AREA:

Unit Data		
	Design	Actual
MFG	YORK	CARRIER
Serial Num	-	84314C789007
Model Num	ZR090N18R	48TCEA07A2A5
Type	-	RTU
Configuration	-	VERTICAL
Num OA Filters 1	-	1
Num Final Filter 1	-	4
Final Filter Size 1	-	16X16X2

Motor Data		
	Design	Actual
Motor MFG	-	MARATHON
Frame	-	56Hz
Horsepower	-	NL
Motor Rpm	-	1725
Phase	-	3
Rated Voltage	-	208
Rated Amperage	-	8.4

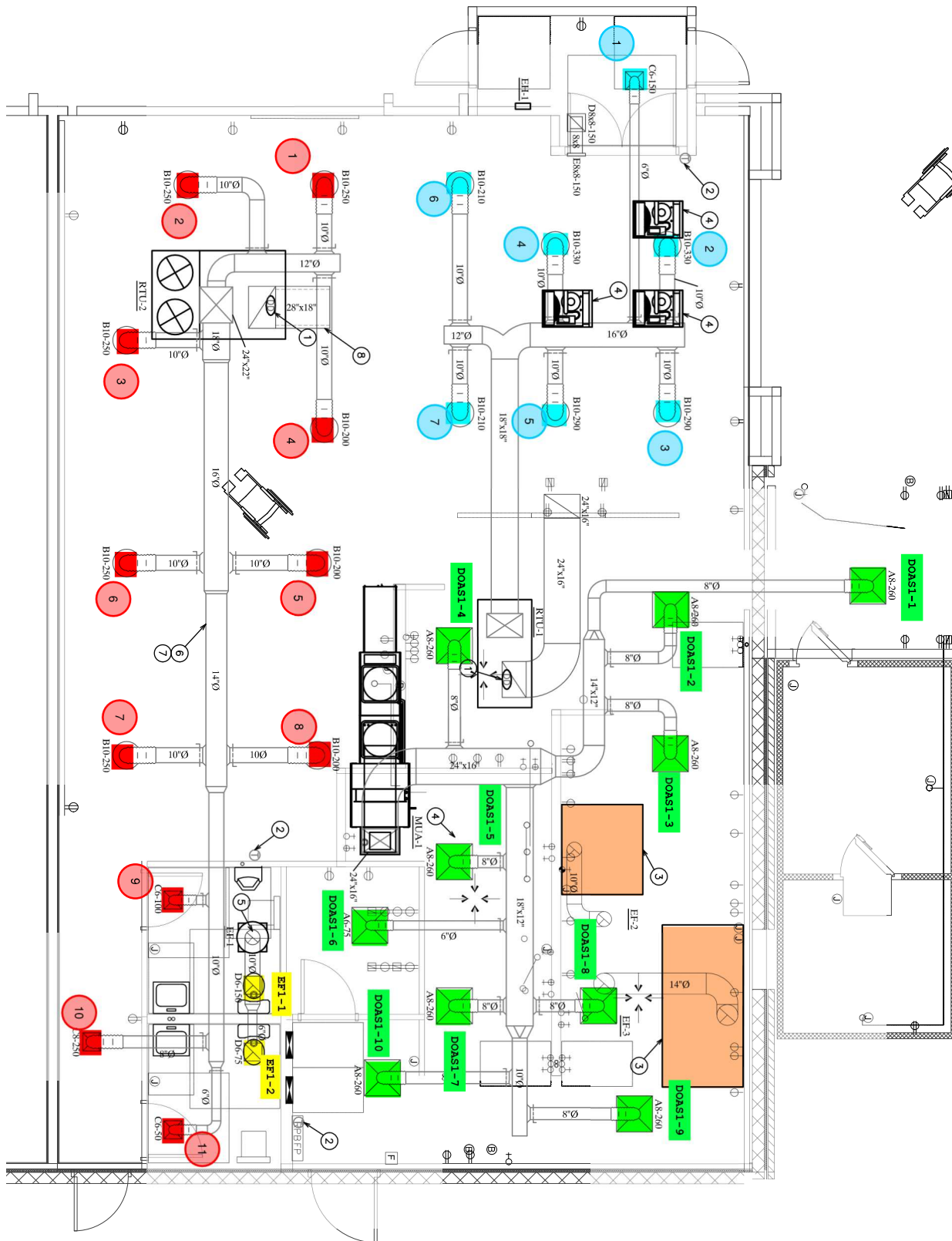
Drive Data		
	Design	Actual
Motor Sheave Size	-	5"
Motor Bore Size	-	7/8"
Fan Sheave Size	-	5.25"
Fan Sheave Bore	-	5/8"
Belt CL Distance	-	14.75"
Num of Belts	-	1
Belt Size	-	AX41
Belt Alignment	-	VERIFIED

Test Data		
	Design	Actual
SF CFM	2400	2222
SF RPM	-	1556
RA CFM	-	1921
OA CFM	-	301
RL Voltage	-	216
RL Amperage	-	5.4/5.3/6.0
SF Rotation	-	CW
RA Damper Position	-	80%
Min OA Damper Position	-	20%
Min OA Damper Type	-	ECONOMIZER
OA Enthalpy Setpt	-	D

Performance Data		
	Design	Actual
MA Plenum SP	-	-0.46"
Fan Suction SP	-	-1.12"
Fan Discharge SP	-	0.70"
Total ESP	-	1.16"
Fan Total SP	-	1.82"

General		
	Design	Actual
Fan Rotation Correct	-	YES
Unit Filters Clean	-	NO
Condensate Drain Installed	-	YES

Completed By: Dylan Crisman on 12/05/2023





# National TAB

Project: 12-04-23 FREDDYS - INDIANAPOLIS, IN (96TH ST)

## System/Unit: AHU/RTU

Asset: DOAS1

AREA:

Unit Data		
	Design	Actual
MFG	CAPTIVEAIRE	CAPTIVEAIRE
Serial Num	-	57891906
Model Num	CASRTU3-1.250-15-15T	CASRTU3-1.250-15-15T
Type	DOAS	DOAS
Configuration	VERTICAL	VERTICAL
Num OA Filters 1	-	4
OA Filter Size 1	-	16X25
Num Final Filter 1	-	8
Final Filter Size 1	-	20X25X2

Motor Data		
	Design	Actual
Motor MFG	-	TECO-WESTINGHOUSE
Frame	-	145T
Horsepower	-	2.0
Motor Rpm	-	1740
Phase	-	3
Rated Voltage	-	230
Rated Amperage	-	5.48

Drive Data		
	Design	Actual
Motor Sheave Size	-	DD
Motor Bore Size	-	DD
Motor Sheave SetPt	-	50Hz
Fan Sheave Size	-	DD
Fan Sheave Bore	-	DD
Belt CL Distance	-	DD
Num of Belts	-	DD
Belt Size	-	DD
Belt Alignment	-	DD

Test Data		
	Design	Actual
SF CFM	2200	2297
SF RPM	-	1449
RA CFM	0	0
OA CFM	2200	2297
RL Voltage	-	149
RL Amperage	-	4.5
SF Rotation	-	CW
RA Damper Position	-	0%
Min OA Damper Position	-	100%
Min OA Damper Type	-	ECONOMIZER
OA Enthalpy Setpt	-	D

Performance Data		
	Design	Actual
MA Plenum SP	-	NA
Fan Suction SP	-	NA
Fan Discharge SP	-	NA
Total ESP	-	NA
Fan Total SP	-	NA

General		
	Design	Actual
Fan Rotation Correct	-	YES
Unit Filters Clean	-	YES
Condensate Drain Installed	-	YES

Completed By: Dylan Crisman on 12/05/2023