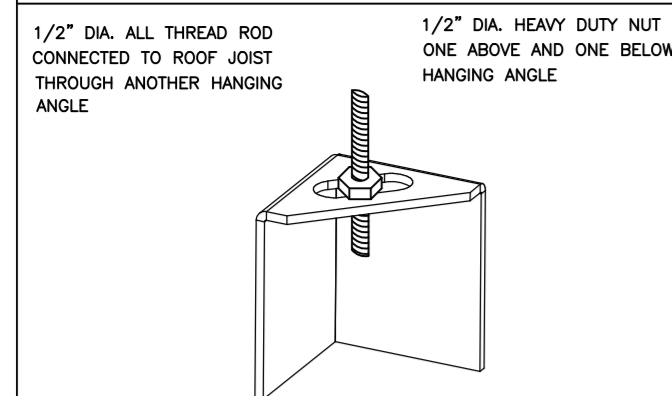


ND-2 HANGING ANGLE DETAIL



* ROD AND NUTS TO BE SUPPLIED BY INSTALLING CONTRACTOR
HANGING ANGLE IS PRE-FINISHED AT FACTORY

HANGING ANGLE LOCATIONS

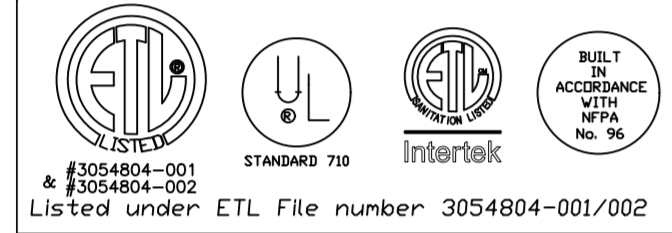
HOOD STYLE	DIM FROM REAR	DIM FROM FRONT (24" H)	DIM FROM FRONT (30" H)
CANOPY ND2	4.166"	2.246"	2.246"
ND2-PSP-F	4.166"	2.246"	2.246"
BACKSHELF BD-2	4.166"	2.246"	-
VHB/VHB-G	36"x36"	42"x42"	48"x48"
FRONT/BACK DIMS BY SIZE	2.246"	2.246"	2.246"

CALCULATIONS UTILIZED

EXHAUST CFM=LENGTH OF HOOD X CFM/LIN.FT. (LOAD)
SUPPLY CFM=EXHAUST CFM X PERCENTAGE REQUIRED
TOTAL DUCT AREA=144 X CFM
DUCT LENGTH= DUCT DEPTH
CAPTIVE-AIRE DUCT CONNECTION SIZES ARE CALCULATED USING AN EXHAUST VELOCITY OF 1500-1800 FPM AND A SUPPLY VELOCITY OF 300-400 FPM

BUILDING CODES

CAPTIVE-AIRE HOODS ARE BUILT IN COMPLIANCE WITH:



UL LISTED UNDER ETL FILE NUMBER 3054804-001/002

CLEARANCE TO COMBUSTIBLES

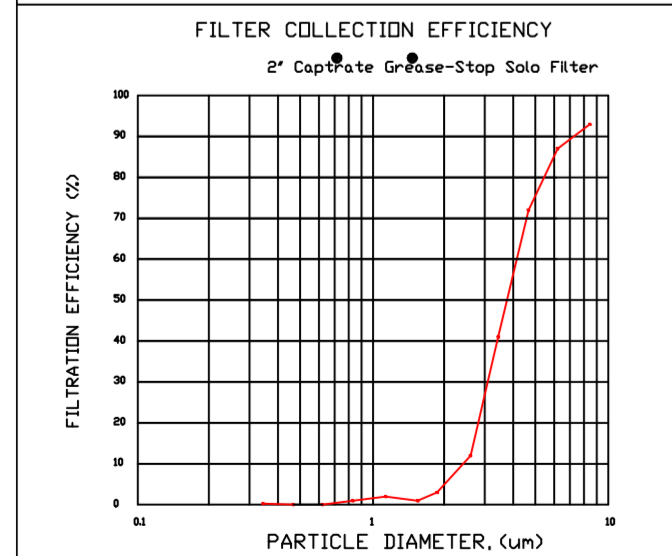
CAPTIVE-AIRE HOODS HAVE OPTIONAL CLEARANCE REDUCTION SYSTEMS AVAILABLE AS FOLLOWS:

MATERIAL	CLEARANCE REDUCTION SYSTEM
NON-COMBUSTIBLE	NONE REQUIRED
LIMITED-COMBUSTIBLE	3" UNINSULATED STANDOFF
COMBUSTIBLE	1" INSULATED STANDOFF

GENERAL NOTES

- INSTALLATION**
- ALL ELECTRICAL "FIELD" CONNECTIONS AND RELATED INTERCONNECTIONS BY ELECTRICAL CONTRACTORS.
 - ALL PLUMBING "FIELD" CONNECTIONS AND RELATED INTERCONNECTIONS BY PLUMBING CONTRACTORS.
 - HANGING BRACKETS LOCATED AND WELDED AS SHOWN ON PLANS. ALL OTHER HANGER MATERIALS PROVIDED BY INSTALLING CONTRACTORS.
 - ALL CONNECTIONS FROM CAPTIVE-AIRE DUCT PER MECHANICAL CONTRACTORS' PLANS.
 - COOKING EQUIPMENT TO SHUTOFF IN EVENT OF FIRE.
 - EXHAUST FANS TO TURN ON IN EVENT OF FIRE.
 - ALL LIGHTS FIXTURE SHOWN INSTALLED BY CAPTIVE-AIRE ARE FACTORY PREWIRED. INTERCONNECTIONS BETWEEN HOODS AND TO SWITCHES BY ELECTRICAL CONTRACTORS.
 - LAMPS FOR LIGHT FIXTURES BY INSTALLING CONTRACTORS.
 - SEISMIC RESTRAINTS ARE RESPONSIBILITY OF INSTALLING CONTRACTOR.
 - INSTALLING CONTRACTORS ASSUME ALL RELATED RESPONSIBILITY FOR VERIFICATION OF DIMENSIONAL DATA CONTAINED ON THESE DOCUMENTS FOR ACCURACY, INTEGRATION, AND ADMINISTRATION OF CODE REQUIREMENTS IN EFFECT PRIOR TO ANY RELEASE FOR PRODUCTION OF EQUIPMENT SHOWN.
- BALANCE**
- KITCHEN HOODS MUST BE BALANCED WITH KITCHEN. KITCHEN SHALL BE NEGATIVE WITH RESPECT TO DINING AREA.
 - RESTAURANT SHALL BE POSITIVE WITH RESPECT TO AMBIENT PRESSURE.
- ADDITIONAL**
- WRITTEN HOOD DIMENSIONS HAVE PRECEDENCE OVER SCALE.
 - SIGNED AND "APPROVED" COPIES OF THIS DOCUMENT MUST BE RECEIVED BY THE FACTORY PRIOR TO COMMENCEMENT OF FABRICATION.

FILTER DETAIL



HOOD INFORMATION - JOB#5791906

HOOD NO	TAG	MODEL	MANUFACTURER	LENGTH	MAX CEILING TEMP	TYPE	APPLIANCE DUTY	DESIGN CFM/FT	TOTAL EXH CFM	EXHAUST PLENUM RISER(S)				HOOD CONSTRUCTION	HOOD CONFIG END TO END	ROW	
										WIDTH	LENG	HEIGHT	SP				
1	ITEM 33A	5424 ND-2	CAPTIVEAIRE	8' 0"	450 DEG	1	MEDIUM	200	1600	4'	14'	1600	1497	-0.734'	430 SS WHERE EXPOSED	ALDNE	FRONT
2	ITEM 33B	5424 ND-2	CAPTIVEAIRE	5' 0"	450 DEG	1	MEDIUM	155	775	4'	10'	775	1421	-0.436'	430 SS WHERE EXPOSED	ALDNE	FRONT

HOOD INFORMATION

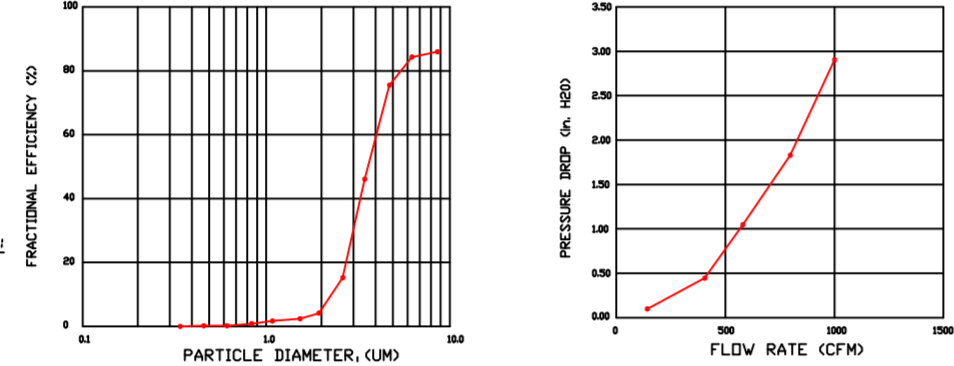
HOOD NO	TAG	TYPE	FILTER(S)		LIGHT(S)		UTILITY CABINET(S)		FIRE SYSTEM	ELECTRICAL	SWITCHES	FIRE SYSTEM PIPING	HOOD HANGING WEIGHT
			QTY	HEIGHT	LENGTH	EFFICIENCY @ 7 MICRONS	DUTY	TYPE					
1	ITEM 33A	CAPTRATE SOLID FILTER	5	16"	16"	85% SEE FILTER SPEC	2	RECESSED ROUND	NO	LEFT	12"x54"x24"	NO	515 LBS
2	ITEM 33B	CAPTRATE SOLID FILTER	3	16"	16"	85% SEE FILTER SPEC	2	RECESSED ROUND	NO	NO	NO	NO	302 LBS

HOOD OPTIONS

HOOD NO	TAG	FIELD WRAPPER	18.00" HIGH	FRONT, LEFT, RIGHT
1	ITEM 33A	RIGHT QUARTER END PANEL	23"	TOP WIDTH, 0" BOTTOM WIDTH, 23" HIGH 430 SS.
2	ITEM 33B	LEFT QUARTER END PANEL	23"	TOP WIDTH, 0" BOTTOM WIDTH, 23" HIGH 430 SS.

SPECIFICATION: CAPTRATE® GREASE-STOP® SOLID FILTER

THE CAPTRATE GREASE-STOP SOLID FILTER IS A SINGLE-STAGE FILTER FEATURING A UNIQUE S-Baffle DESIGN IN CONJUNCTION WITH A SLOTTED REAR Baffle DESIGN, TO DELIVER EXCEPTIONAL FILTRATION EFFICIENCY. FILTER IS STAINLESS STEEL CONSTRUCTION, AND SIZED TO FIT INTO STANDARD 2-INCH DEEP HOOD CHANNEL(S). UNITS SHALL INCLUDE STAINLESS STEEL HANDLES AND A FASTENING DEVICE TO SECURE THE TWO COMPONENTS WHEN ASSEMBLED. GREASE EXTRACTION EFFICIENCY PERFORMANCE SHALL REMOVE AT LEAST 75% OF GREASE PARTICLES FIVE MICRONS IN SIZE, AND 85% GREASE PARTICLES SEVEN MICRONS IN SIZE AND LARGER, WITH A CORRESPONDING PRESSURE DROP NOT TO EXCEED 1.0 INCHES OF WATER GAUGE. THE CAPTRATE GREASE-STOP SOLID WAS TESTED TO ASTM STANDARD ASTM F2519-05. MANUFACTURER APPROVED FOR USE IN SOLID FUEL APPLICATIONS AS A SPARK ARRESTER.



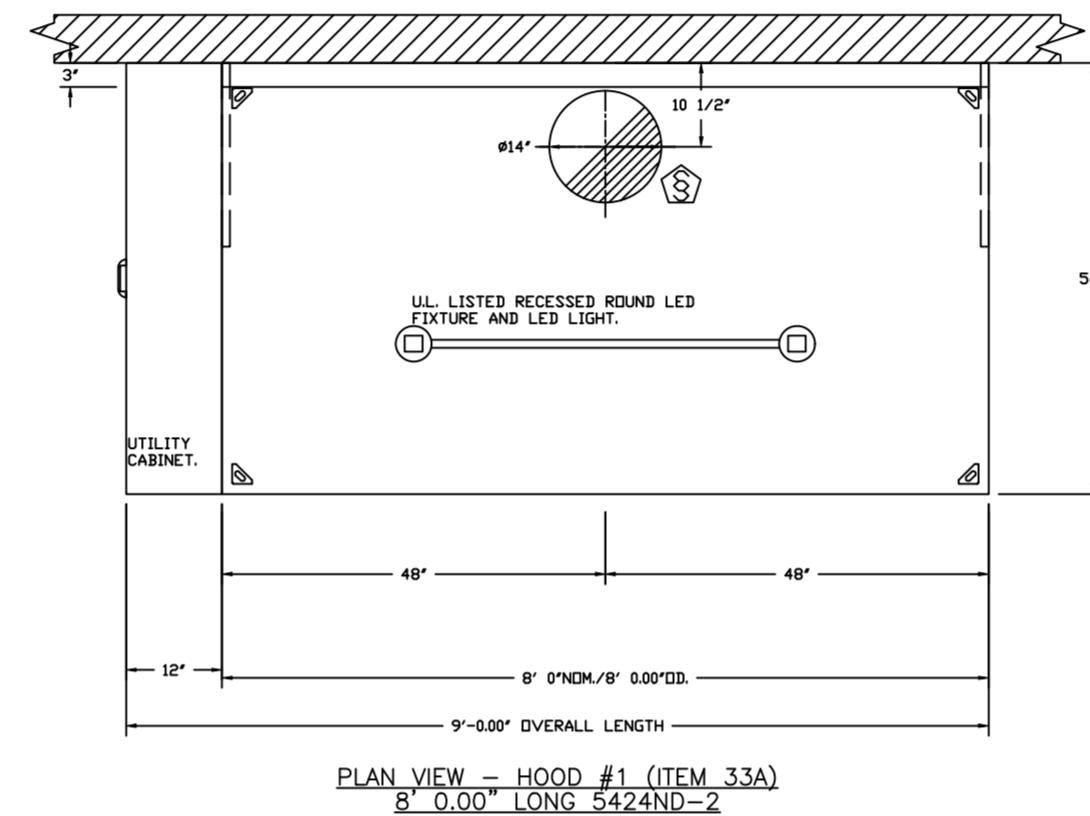
CAPTRATE FILTERS ARE BUILT IN COMPLIANCE WITH:



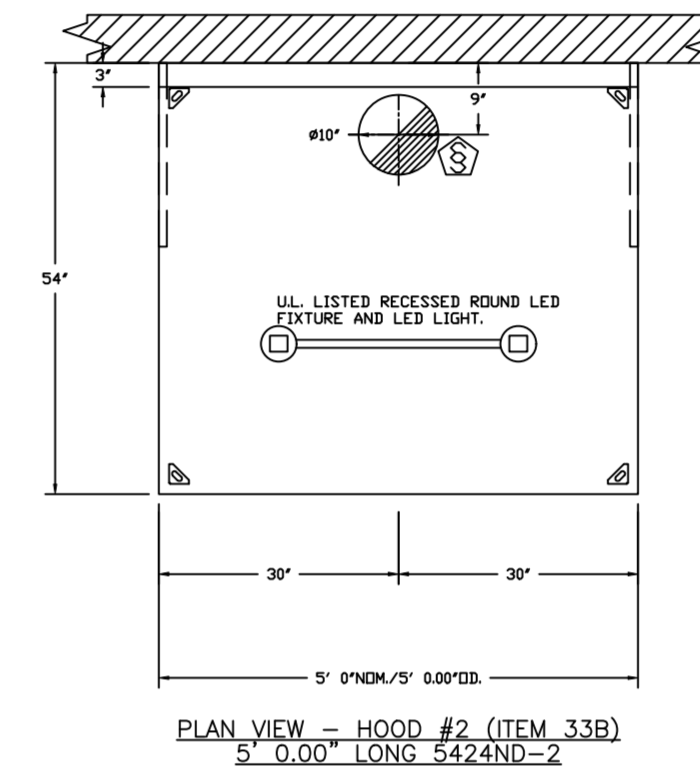
UL LISTED UNDER ETL FILE NUMBER 3054804-001/002

PATENT NUMBERS

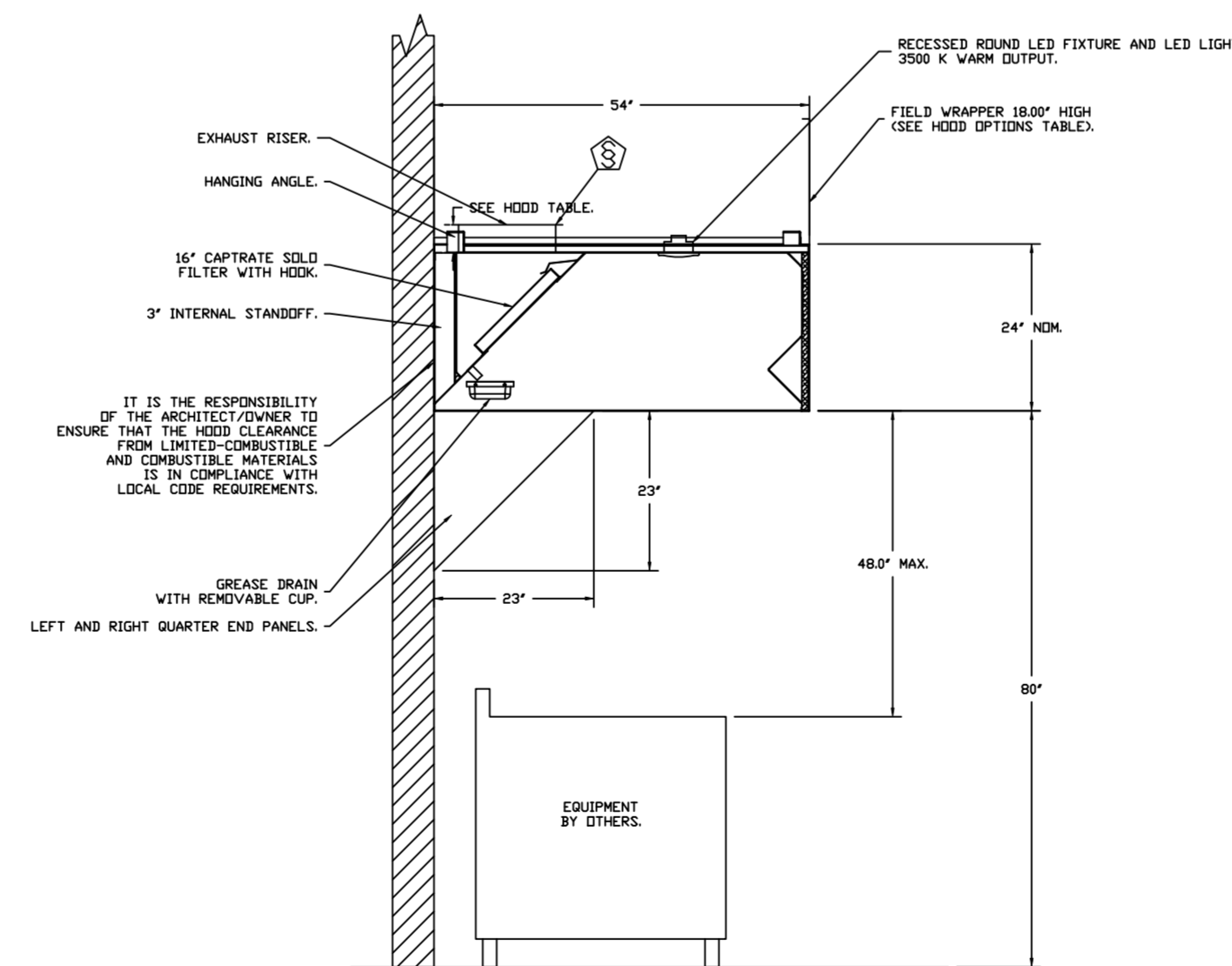
EXHAUST HOODS ND-2/BD-2/SND-2 (CANADA) - CA PATENT 2520435 C.



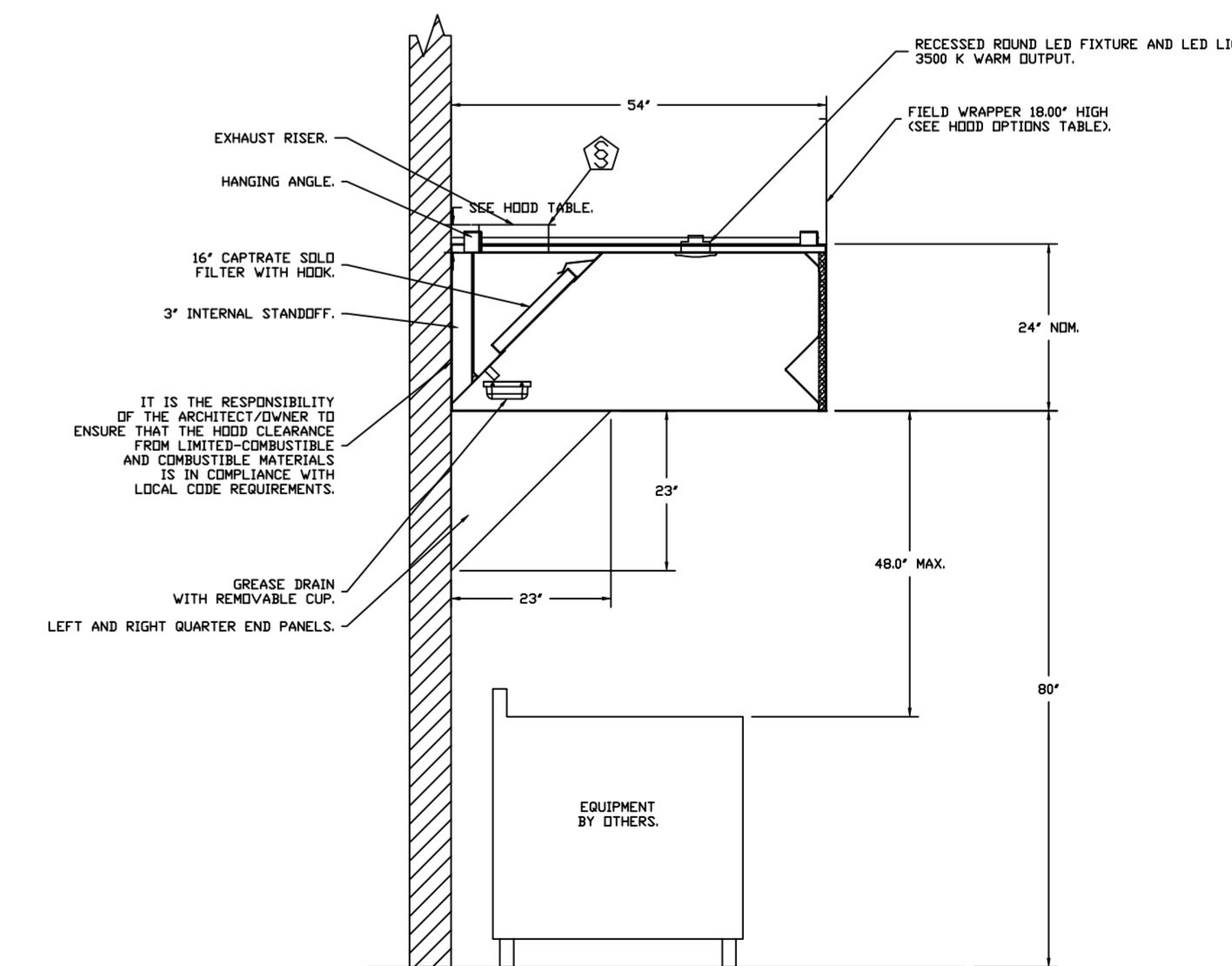
PLAN VIEW - HOOD #1 (ITEM 33A)
8' 0.00" LONG 5424ND-2



PLAN VIEW - HOOD #2 (ITEM 33B)
5' 0.00" LONG 5424ND-2



SECTION VIEW - MODEL 5424ND-2
HOOD - #1 (ITEM 33A)



SECTION VIEW - MODEL 5424ND-2
HOOD - #2 (ITEM 33B)

FOR QUESTIONS, CALL THE: KANSAS CITY REGIONAL OFFICE
1126 SWIFT STREET, KANSAS CITY, MO 64116
PHONE: (816) 221-8575
FAX: (816) 221-8311

CUSTOMER APPROVAL TO MANUFACTURE:

Approved as Noted
Approved with NO Exception Taken
Revise and Resubmit
Signature: _____ Date: _____
Your Title: _____

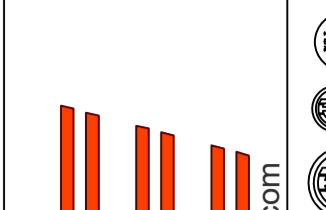
***** NOTE *****
ALL WALLS AND STRUCTURES THAT COME WITHIN 18" OF HOOD MUST BE METAL STUDS AND SHEETROCK. WOOD STUDS OR ANY OTHER COMBUSTIBLE MATERIAL WITHIN 18" OF HOOD NOT ALLOWED.

***** NOTE *****
HOOD MANUFACTURER RECOMMENDS NO RETURNS OR 4-WAY DIFFUSERS WITHIN 10 FEET OF HOOD IN ALL DIRECTION.

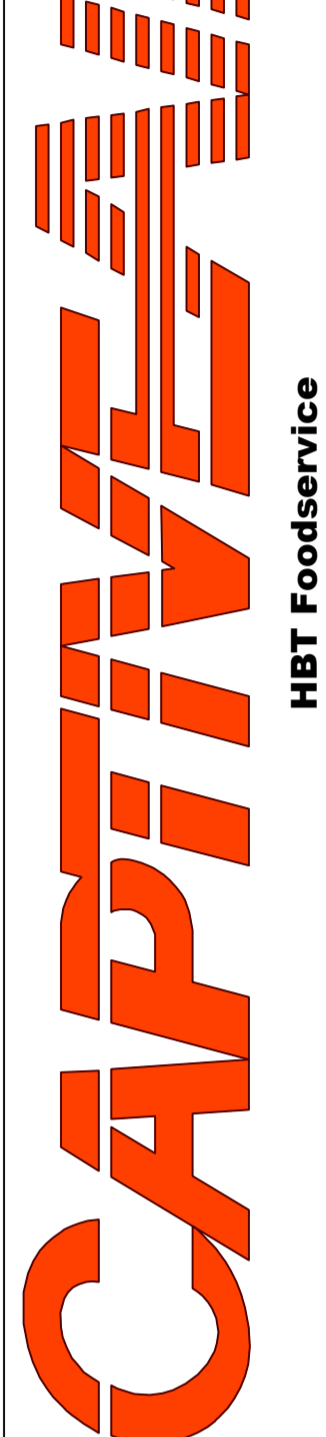
***** NOTE *****
MAKEUP AIR SHALL BE DELIVERED INTO SPACE IN MANNER THAT WILL NOT DISRUPT HOODS ABILITY TO CAPTURE AND CONTAIN.

REVISIONS

DESCRIPTION	DATE:



www.captiveaire.com
HBT Foodservice



104 W 8th St Suite 204, Kansas City, MO, 64105 PHONE: (816) 221-8575 FAX: (816) 221-8311 EMAIL: reg9@captivair.com

Freddy's - Indianapolis, IN
INDIANAPOLIS, IN, 46201

DATE: 1/3/2023

DWG.#: 5791906

DRAWN BY: michael.co

SCALE: 1/2" = 1'-0"

MASTER DRAWING

SHEET NO.

1

EXHAUST FAN INFORMATION - JOB#5791906

FAN UNIT NO	TAG	QTY	FAN UNIT MODEL #	MANUFACTURER	CFM	ESP	RPM	MOTOR ENCL	HP	BHP	PHASE	VOLT	FLA	DISCHARGE VELOCITY	WEIGHT (LBS)	SDNES
1	ITEM 74.1	1	CASRE18DD	CAPTIVEAIRE	1600	1.400	1105	DDP, PREMIUM	1.000	0.6270	3	208	3.8	928 FPM	282	15.7
2	ITEM 74.2	1	DUS05FA	CAPTIVEAIRE	775	1.250	1532	TEAD-ECM	0.500	0.3950	1	115	6.3	295 FPM	16.4	

DOAS/RTU FAN SCHEDULE - JOB#5791906

FAN UNIT NO	TAG	QTY	DOAS/RTU MODEL #	MANUFACTURER	FAN INFORMATION										ELECTRICAL INFORMATION										COOLING INFORMATION										REHEAT INFORMATION										GAS HEAT INFORMATION										NOTES
					BLOWER	RETURN AIR CFM	MAX OUTSIDE AIR CFM	TOTAL CFM	WEIGHT (LBS)	ESP	HP	PHASE	VOLT	MCA	MDCP	OUTSIDE AIR DB	MIXED AIR DB	LEAVING AIR DB	WB	DP	TOTAL	SENS.	IEER	ISMRE	DISCHARGE DB	WB	CAPACITY DESIRED	MAX	MOISTURE REMOVAL RATE	GAS TYPE	INPUT BTU/S	OUTPUT BTU/S	TEMP RISE																						
3	ITEM 74.3	1	CASRTU3-1250-15-15T	CAPTIVEAIRE	15P-3	0	2200	2200	2506	0.500	2.00	3	208	59.2A	60A	83.4°F	77.4°F	83.4°F	77.4°F	53.8°F	51.7°F	50.2°F	186.0 MBH	68.3 MBH	18.8	5.7	700°F	58.1°F	38.9 MBH	29.6	106.0	0.0	LBS/HR	NATURAL	239783	194824	74°F	1,2,3,4,5,6,7,8,9,10,11,12,13,14,15																	

NOTES:

- INVERTER SCROLL COMPRESSOR WITH INTEGRATED OIL SENSOR, DIGITAL OR STAGED SCROLL NOT AN APPROVED EQUAL
- DIRECT DRIVE FLENNER BLOWER - BELT DRIVEN BLOWERS ARE NOT ACCEPTABLE
- INTEGRATED MONITORING VIA CELLULAR CONNECTION BY MANUFACTURER
- REFRIGERATION PRESSURE MONITORING ON HIGH AND LOW PRESSURE SIDE OF SYSTEM INCLUDED THROUGH DIGITAL INTERFACE
- EC MOTOR CONDENSING FANS
- ELECTRONIC EXPANSION VALVE - TXV NOT ACCEPTABLE
- SUCTION LINE ACCUMULATOR
- FACTORY COMMISSIONING WITH 5 YEAR PARTS WARRANTY, 25 YEAR WARRANTY ON STAINLESS STEEL HEAT EXCHANGER
- AVERAGING INTAKE, EVAP AND DISCHARGE TEMPERATURE SENSORS DISCHARGE SENSOR TO BE FACTORY MOUNTED WITHIN UNIT
- 2" EXTERIOR DUAL-WALL CONSTRUCTION W/ R-13 INSULATION-MINIMUM 20GA EXTERIOR W/ 1/4GA BASE
- SIX EFFICIENT FURNACE, WITH MODULATING INDUCER TO MAINTAIN CONSTANT COMBUSTION EFFICIENCY ACROSS FIRING RANGE, 6:1 TURNDOWN WITH NG AND 5:1 TURNDOWN WITH LP
- SUPPLY CFM MONITORING INTEGRAL TO UNIT WITH CFM MEASUREMENT INCLUDED THROUGH DIGITAL INTERFACE
- FULLY MODULATING HOT GAS REHEAT
- HAUL GUARD FOR CONDENSING COIL
- DOWN DISCHARGE/DOWN RETURN

FAN OPTIONS

FAN UNIT NO	TAG	QTY	DESCRIPTION
1	ITEM 74.1	1	UTILITY SET GREASE CUP
1	ITEM 74.1	1	RE18 - DISCHARGE EXTENSION ASSEMBLY WITH HARDWARE
1	ITEM 74.1	1	2 YEAR PARTS WARRANTY
1	ITEM 74.1	1	GREASE BOX
1	ITEM 74.1	1	UPBLAST FAN WHEEL ACCESS PORT
1	ITEM 74.1	1	36" TALL STRAIGHT WIND BAND EXTENSION (3 SHIPS LOOSE)
1	ITEM 74.1	1	GUY LINE EYE BOLTS - USED FOR 3 GUY LINE TIE OFF POINTS
1	ITEM 74.1	1	ECM WIRING PACKAGE - PWM SIGNAL FROM ECM/MD3 PREWIRE (TELCO MOTOR), CCV ROTATION
1	ITEM 74.1	1	2 YEAR PARTS WARRANTY
1	ITEM 74.3	1	INLET PRESSURE GAUGE, 0-35"
1	ITEM 74.3	1	MANIFOLD PRESSURE GAUGE, 0 TO 10" WC, 1 FURNACE
1	ITEM 74.3	1	RTU TOTAL CFM MONITORING
1	ITEM 74.3	1	SHIP LOOSE GAS STRAINER 1"
1	ITEM 74.3	1	SINGLE POINT ELECTRICAL CONNECTION FOR RTU, 750VA TRANSFORMER USED, IF A NON-DCV PREWIRE CONTROLS THIS UNIT, THE #8B, #47, #49, OR #52 PREWIRE OPTION MUST BE SELECTED, DOES NOT PROVIDE SUPPLY STARTER IN PREWIRE
1	ITEM 74.3	1	CASLINK BUILDING MONITORING SYSTEM - INTERNET OR CELLULAR CONNECTION REQUIRED
1	ITEM 74.3	1	RTU3 DOWN DISCHARGE
1	ITEM 74.3	1	2" MERV 13 FILTERS FOR RTU3 (QTY. 4)
1	ITEM 74.3	1	2" MERV 8 FILTERS FOR RTU3 (QTY. 4)
1	ITEM 74.3	1	OVERHEAT STAT
1	ITEM 74.3	1	VFD FACTORY MOUNTED AND WIRED IN RTU COMMERCIAL CONTROL VESTIBULE
1	ITEM 74.3	1	RTU3 CURB DUCT HANGER
1	ITEM 74.3	1	RTU3 DOWN RETURN
1	ITEM 74.3	1	RTU RETURN MOUNTED SMOKE DETECTOR AND SAMPLING TUBE - FACTORY INSTALLED
1	ITEM 74.3	1	OCCUPIED SCHEDULING
1	ITEM 74.3	1	CLOSED FILTER SWITCH - NOTIFICATION ON HMI
1	ITEM 74.3	1	15 TON MODULATING COOLING OPTION, 208/230V, R410A REFRIGERANT, VARIABLE SPEED COMPRESSOR, ECM CONDENSING FANS
1	ITEM 74.3	1	15 TON MODULATING REHEAT OPTION - SPACE DEWPOINT CONTROL
1	ITEM 74.3	1	RTU INTAKE/RETURN DAMPER - MANUAL CONTROL VIA HMI
1	ITEM 74.3	1	RTU3 HAUL GUARD
1	ITEM 74.3	1	FREESTAT
1	ITEM 74.3	1	VAV PACKAGE W/ 0-10VDC INPUT CONTROL (571 VFD INCLUDED)
1	ITEM 74.3	1	5 YEAR ENTIRE UNIT PARTS WARRANTY, 10 YEAR ENTIRE UNIT PARTS WARRANTY WITH REMOTE MONITORING AND CAPTIVEAIRE SERVICE CONTRACT, 25 YEAR STAINLESS STEEL FURNACE PARTS WARRANTY (SEE ADDITIONAL DETAILS)

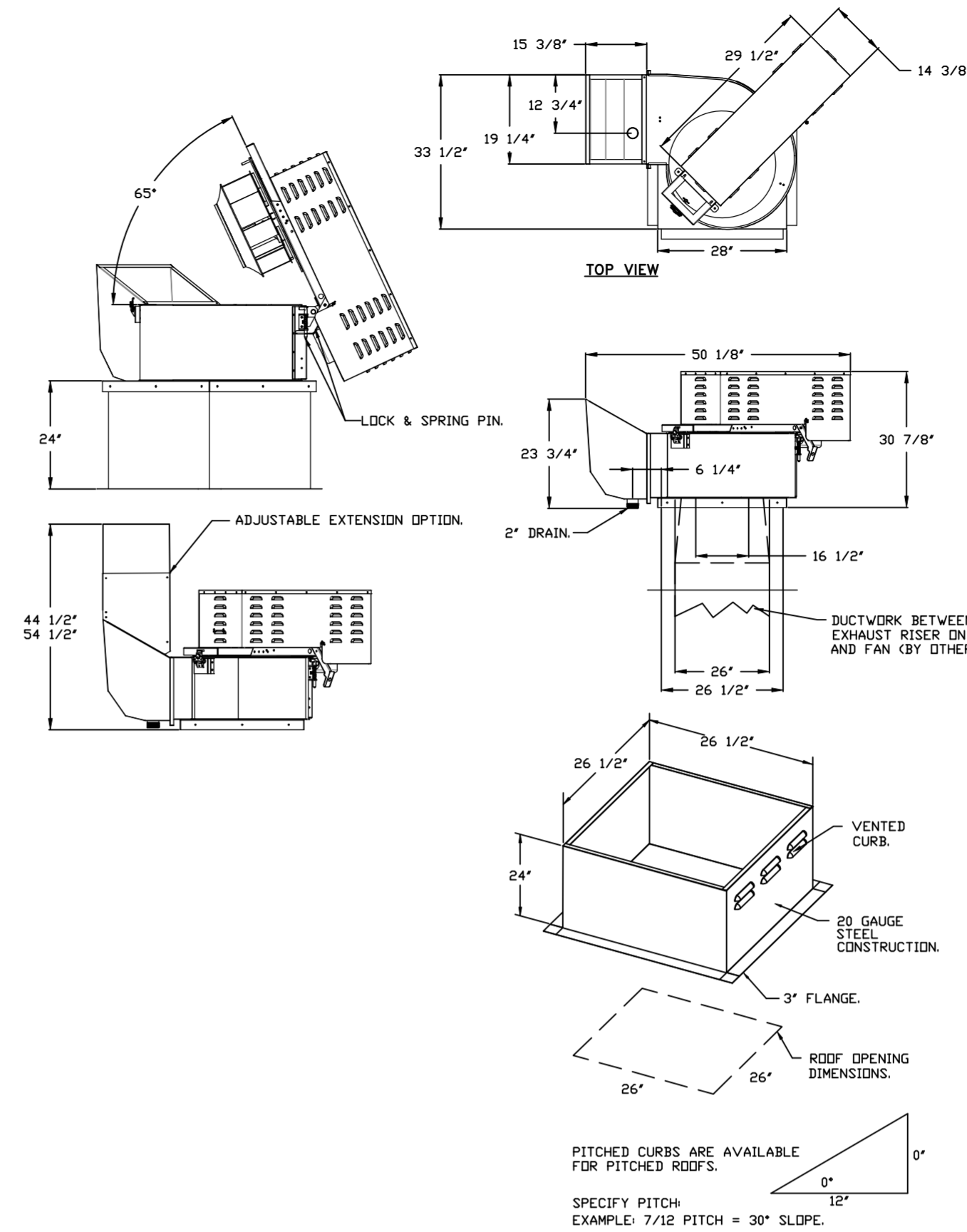
FAN ACCESSORIES

FAN UNIT NO	TAG	EXHAUST	SUPPLY				
		GREASE CUP	GRAVITY WALL MOUNT	SIDE DISCHARGE	GRAVITY DAMPER	MOTORIZED DAMPER	WALL MOUNT
1	ITEM 74.1	YES					
2	ITEM 74.2	YES					

CURB ASSEMBLIES

NO	IN FAN	TAG	WEIGHT	ITEM	SIZE
1	# 1	ITEM 74.1	30 LBS	CURB	26.500"W X 26.500"L X 24.000"H ALONG LENGTH, RIGHT VENTED
2	# 2	ITEM 74.2	31 LBS	CURB	19.500"W X 19.500"L X 20.000"H ALONG LENGTH, RIGHT VENTED HINGED
3	# 3	ITEM 74.3	104 LBS	CURB	59.500"W X 91.000"L X 14.000"H ALONG WIDTH, RIGHT INSULATED

FAN #1 CASRE18DD - EXHAUST FAN (ITEM 74.1)



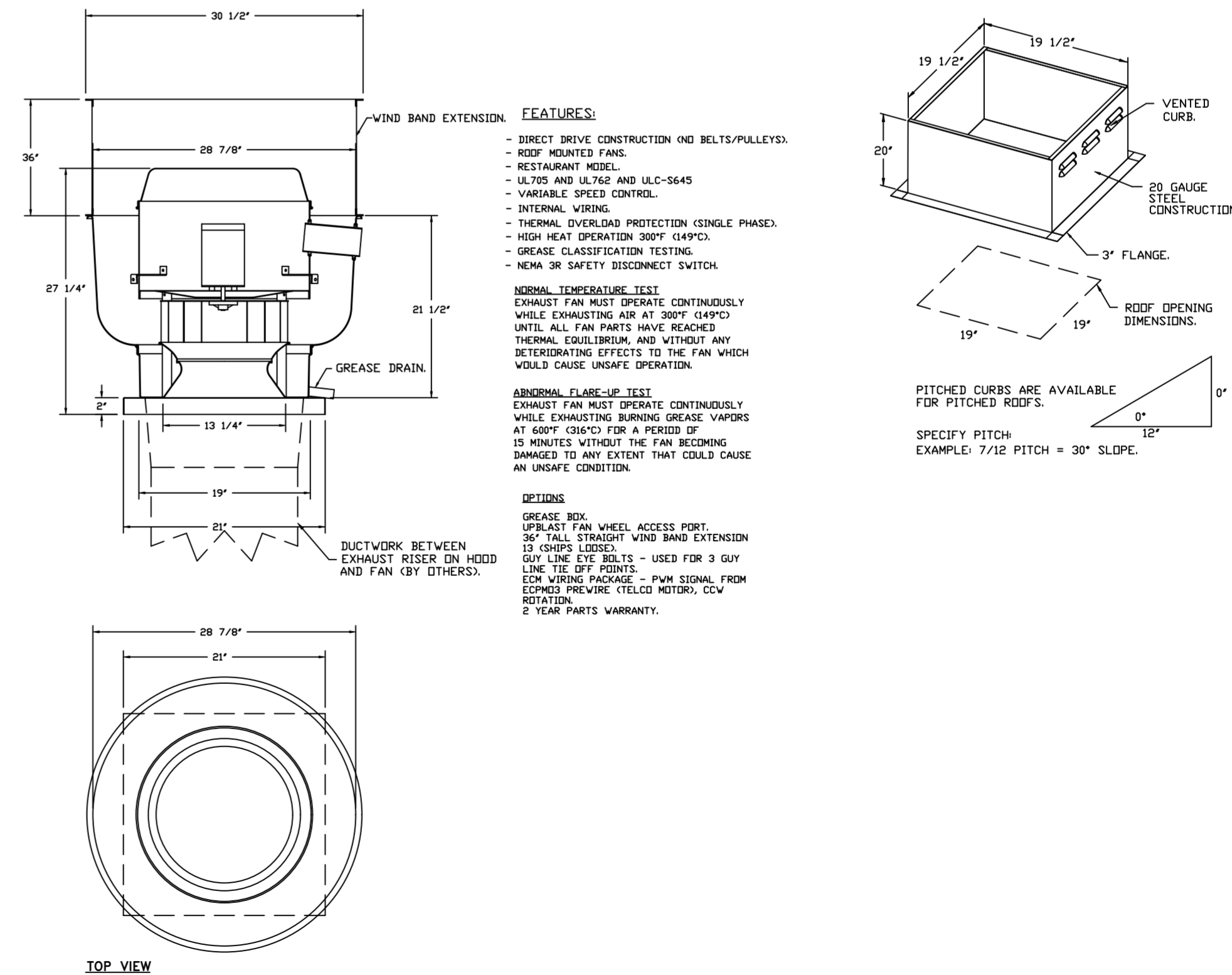
- FEATURES:**
- ROOF MOUNTED FANS.
 - RESTAURANT MODEL.
 - UL762 AND ULC-S645.
 - HIGH HEAT OPERATION DIRECT DRIVE 300°F (149°C).
 - HEAT SLINGERS.
 - GREASE CLASSIFICATION TESTING.
 - TILT OUT WHEEL.
 - LOCKING PIN FOR POWER PACK.
 - MOTOR WEATHER COVER.
 - INTERLOCKED DISCONNECT SWITCH.
 - NEMA 4X SAFETY DISCONNECT SWITCH.

NORMAL TEMPERATURE TEST DIRECT DRIVE EXHAUST FAN MUST OPERATE CONTINUOUSLY WHILE EXHAUSTING AIR AT 300°F (149°C) UNTIL ALL FAN PARTS HAVE REACHED THERMAL EQUILIBRIUM, AND WITHOUT ANY DETRIMENTARY EFFECTS TO THE FAN WHICH WOULD CAUSE UNSAFE OPERATION.

ABNORMAL FLARE-UP TEST BELT & DIRECT DRIVE EXHAUST FAN MUST OPERATE CONTINUOUSLY WHILE EXHAUSTING BURNING GREASE VAPORS AT 600°F (315°C) FOR A PERIOD OF 15 MINUTES WITHOUT THE FAN BECOMING DAMAGED TO ANY EXTENT THAT COULD CAUSE AN UNSAFE CONDITION.

- OPTIONS**
- UTILITY SET GREASE CUP.
 - RE18 - DISCHARGE EXTENSION ASSEMBLY WITH HARDWARE.
 - 2 YEAR PARTS WARRANTY.

FAN #2 DUS05FA - EXHAUST FAN (ITEM 74.2)

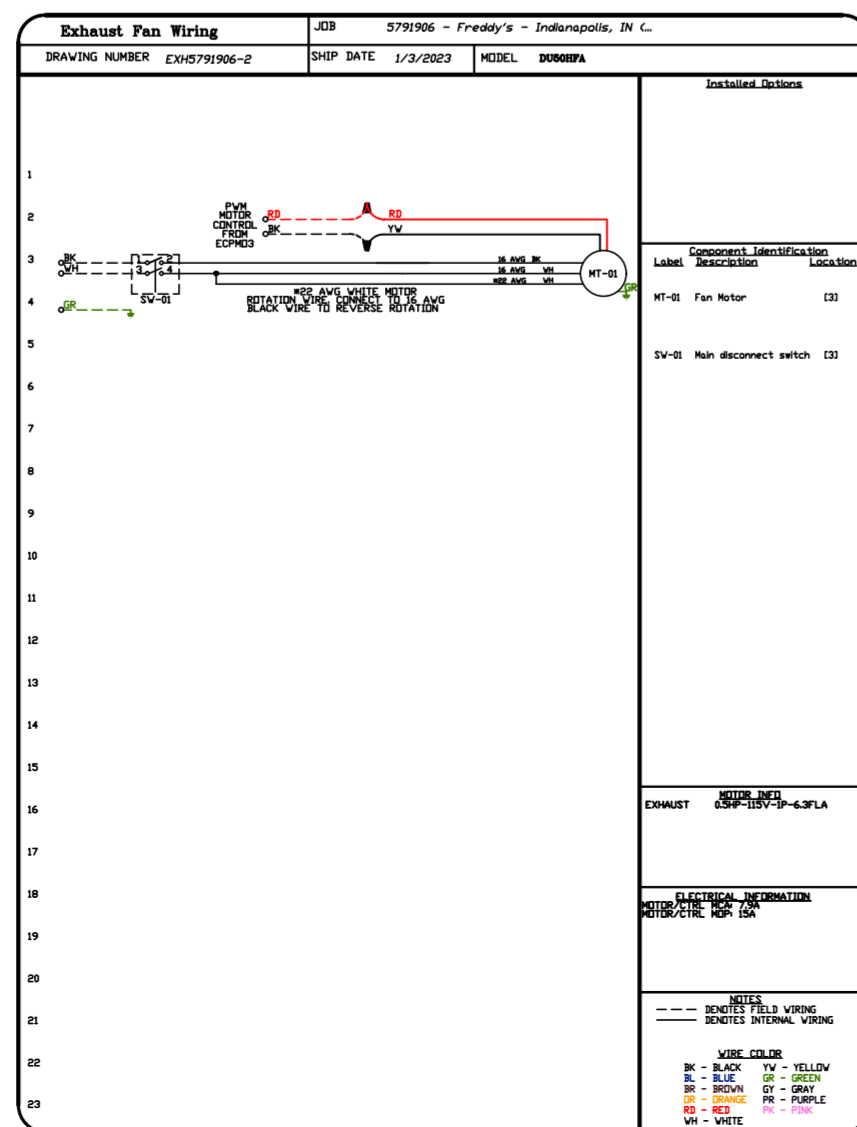
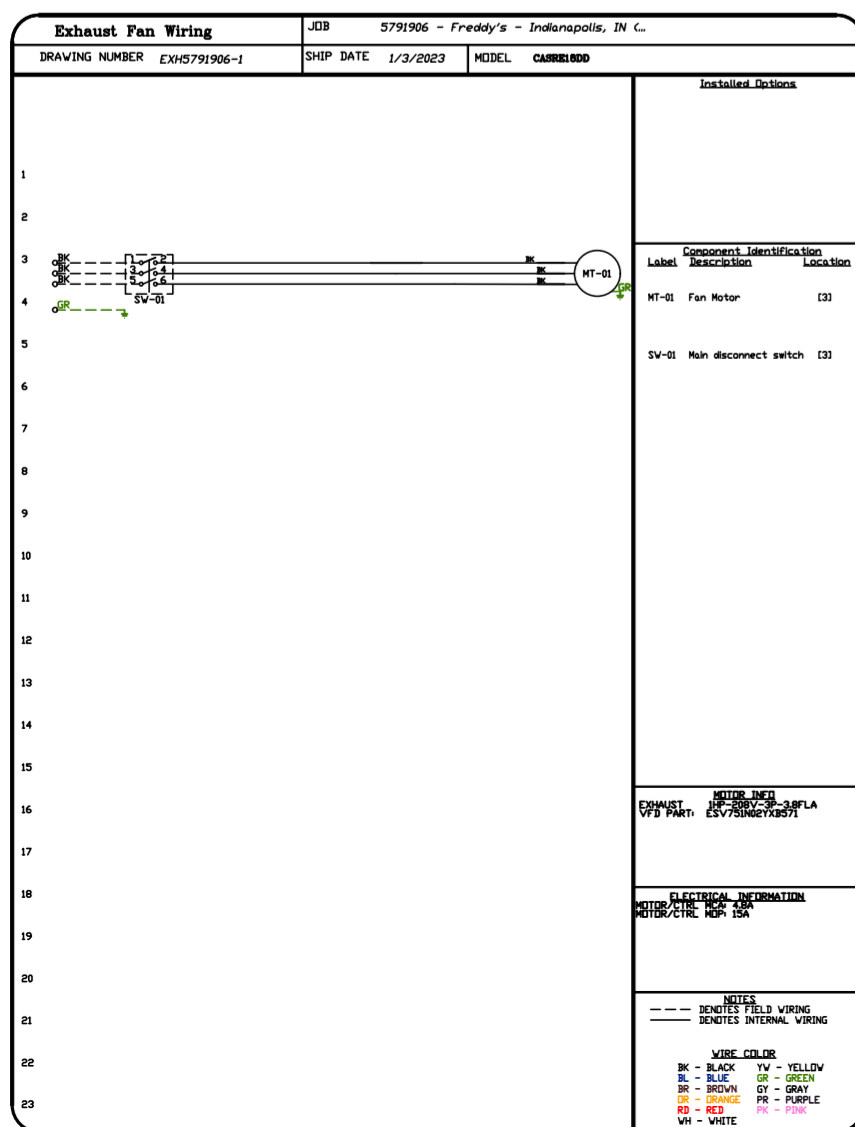


- FEATURES:**
- DIRECT DRIVE CONSTRUCTION (NO BELTS/PULLEYS).
 - ROOF MOUNTED FANS.
 - RESTAURANT MODEL.
 - UL762 AND ULC-S645.
 - VARIABLE SPEED CONTROL.
 - INTERNAL WIRING.
 - THERMAL OVERLOAD PROTECTION (SINGLE PHASE).
 - HIGH HEAT OPERATION 300°F (149°C).
 - GREASE CLASSIFICATION TESTING.
 - NEMA 3R SAFETY DISCONNECT SWITCH.

NORMAL TEMPERATURE TEST EXHAUST FAN MUST OPERATE CONTINUOUSLY WHILE EXHAUSTING AIR AT 300°F (149°C) UNTIL ALL FAN PARTS HAVE REACHED THERMAL EQUILIBRIUM, AND WITHOUT ANY DETRIMENTARY EFFECTS TO THE FAN WHICH WOULD CAUSE UNSAFE OPERATION.

ABNORMAL FLARE-UP TEST EXHAUST FAN MUST OPERATE CONTINUOUSLY WHILE EXHAUSTING BURNING GREASE VAPORS AT 600°F (315°C) FOR A PERIOD OF 15 MINUTES WITHOUT THE FAN BECOMING DAMAGED TO ANY EXTENT THAT COULD CAUSE AN UNSAFE CONDITION.

- OPTIONS**
- GREASE BOX.
 - UPBLAST FAN WHEEL ACCESS PORT.
 - 36" TALL STRAIGHT WIND BAND EXTENSION (3 SHIPS LOOSE).
 - GUY LINE EYE BOLTS - USED FOR 3 GUY LINE TIE OFF POINTS.
 - ECM WIRING PACKAGE - PWM SIGNAL FROM ECM/MD3 PREWIRE (TELCO MOTOR), CCV ROTATION.
 - 2 YEAR PARTS WARRANTY.



REVISIONS

DESCRIPTION	DATE

CAPTIVEAIRE

HBT Foodservice

104 W 8th St Suite 204, Kansas City, MO, 64105 PHONE: (816) 221-8311 FAX: (816) 221-8311 EMAIL: reg9@captivaire.com

Freddy's - Indianapolis, IN
INDIANAPOLIS, IN, 46201

DATE: 1/3/2023

DWG.#: 5791906

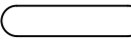
DRAWN BY: michael.co

SCALE: 1/2" = 1'-0"

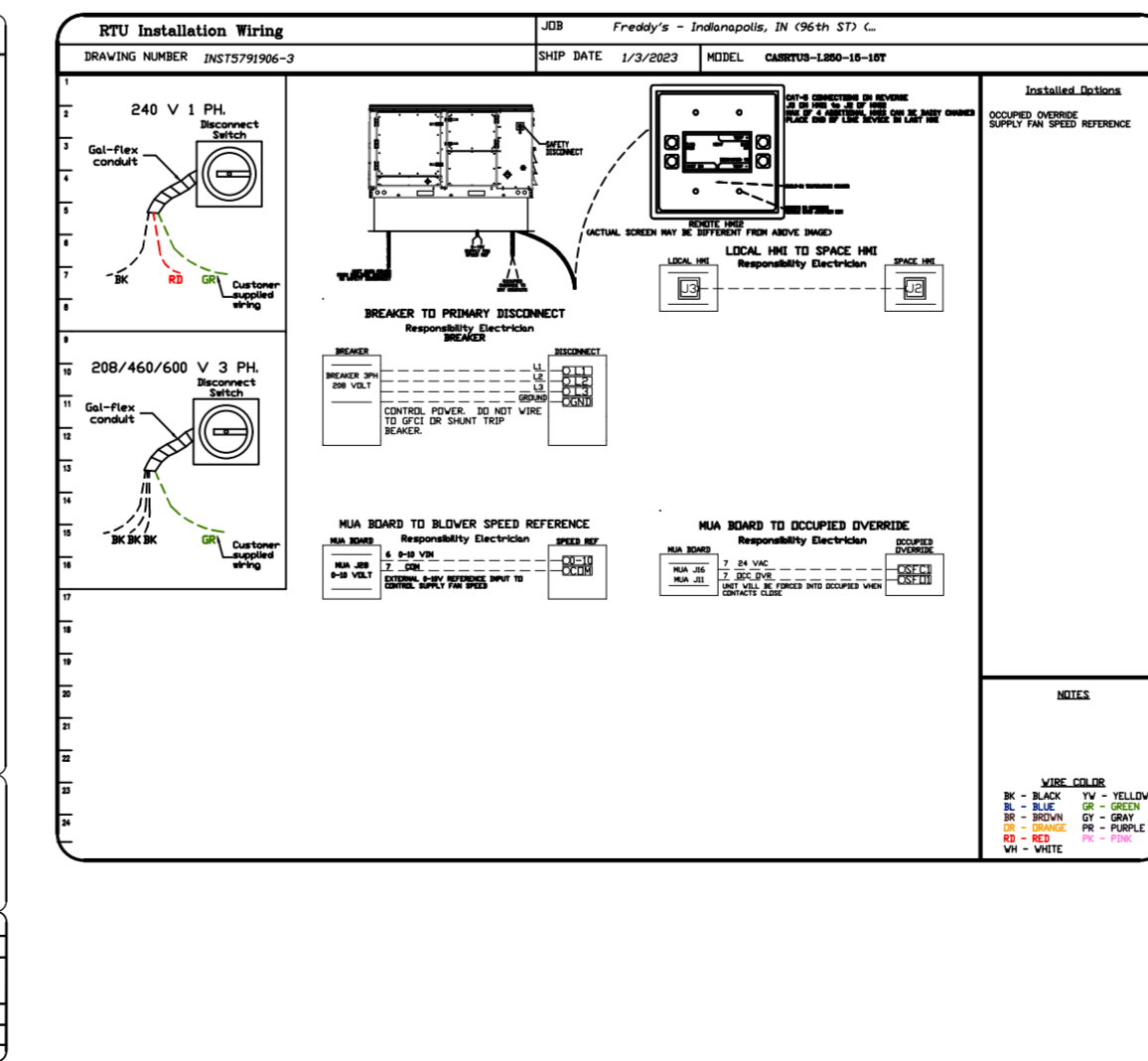
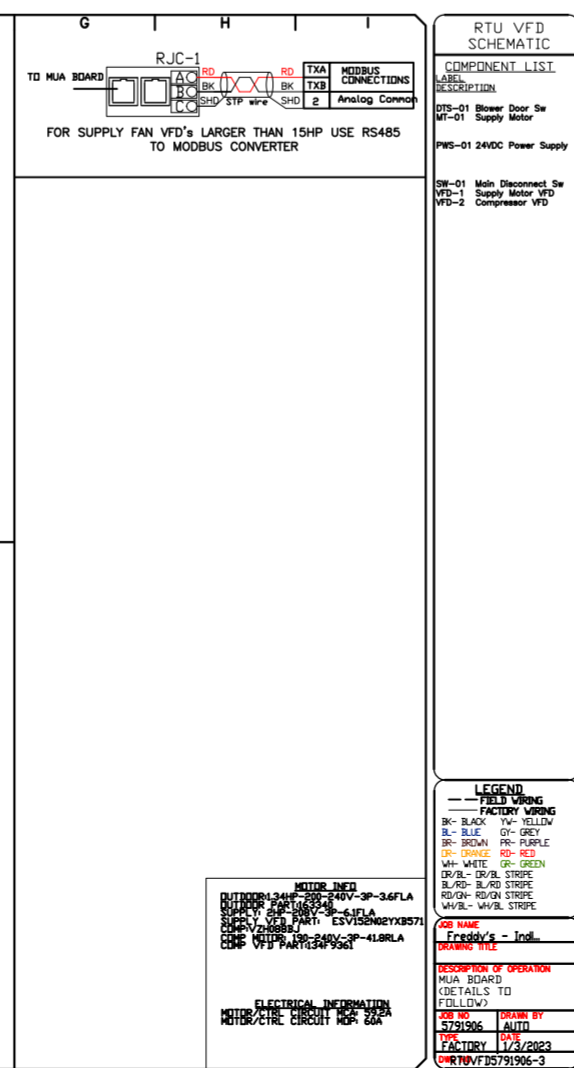
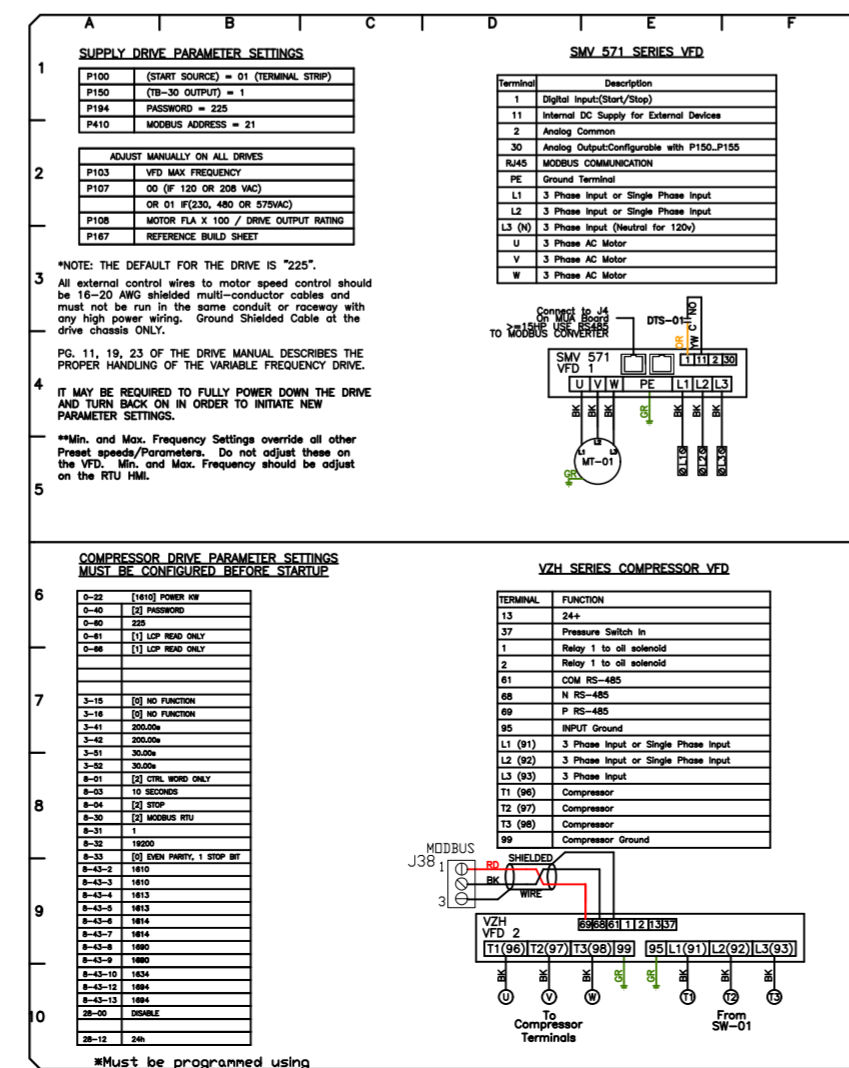
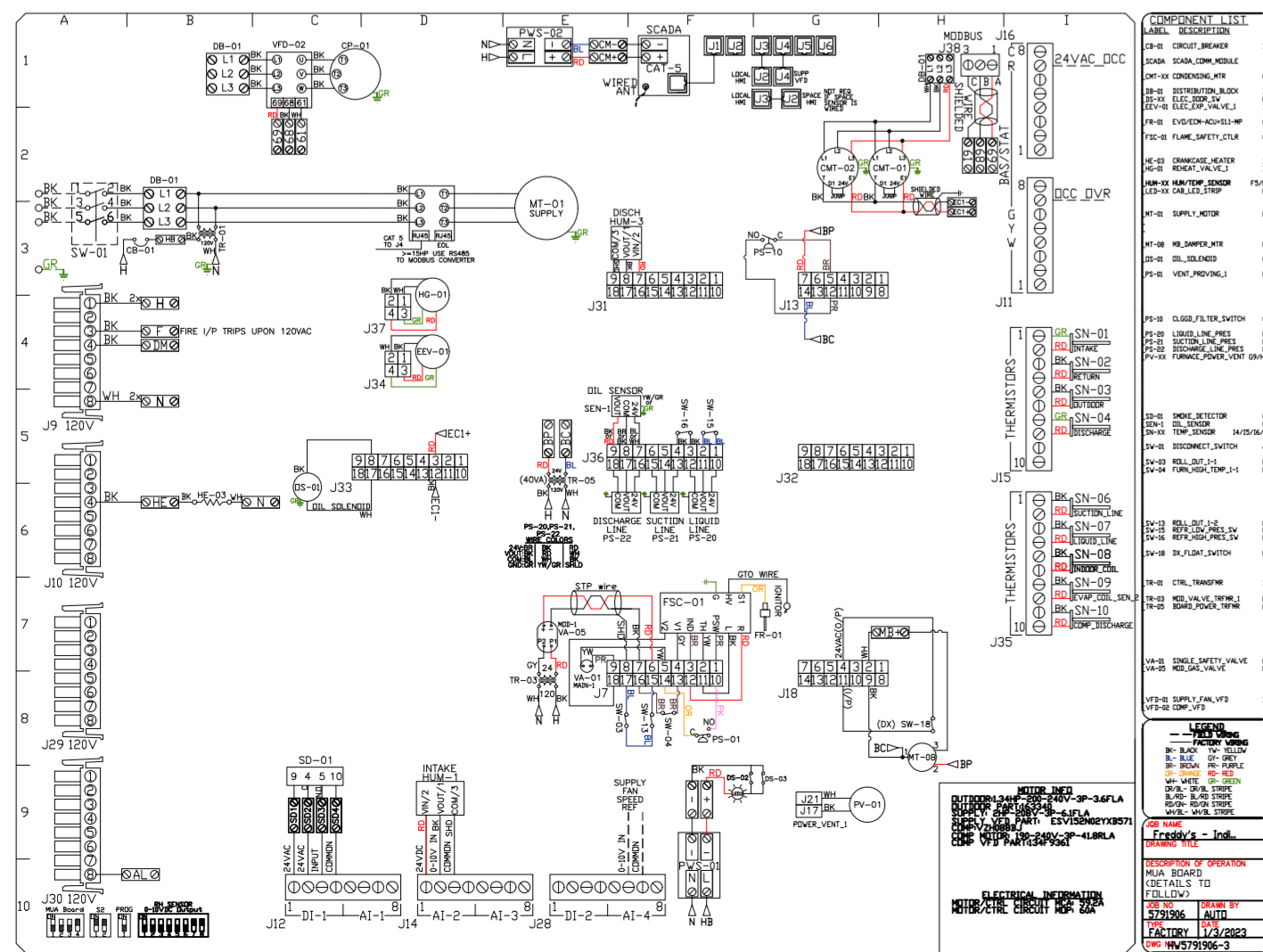
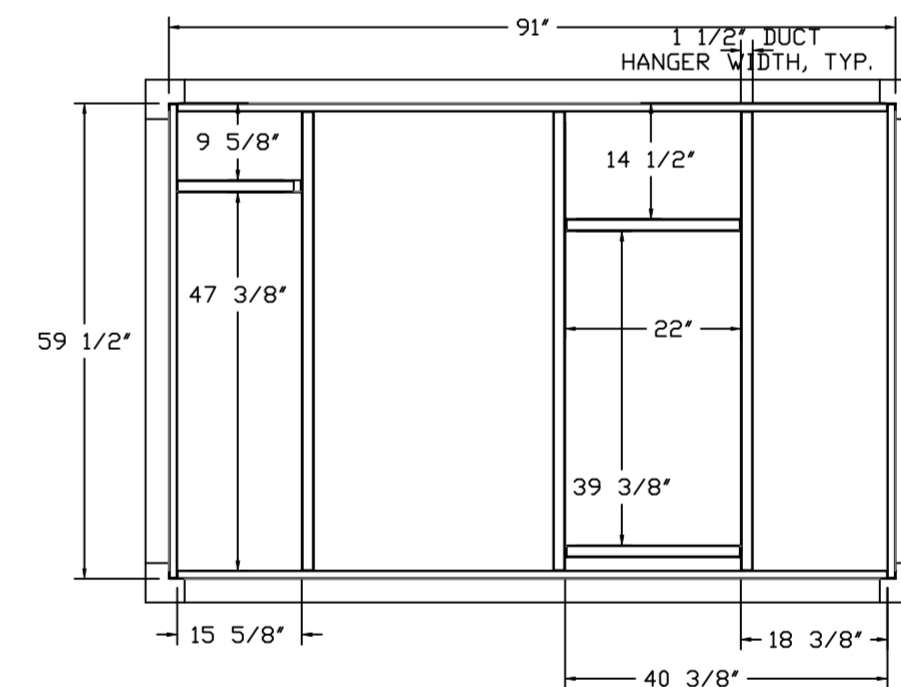
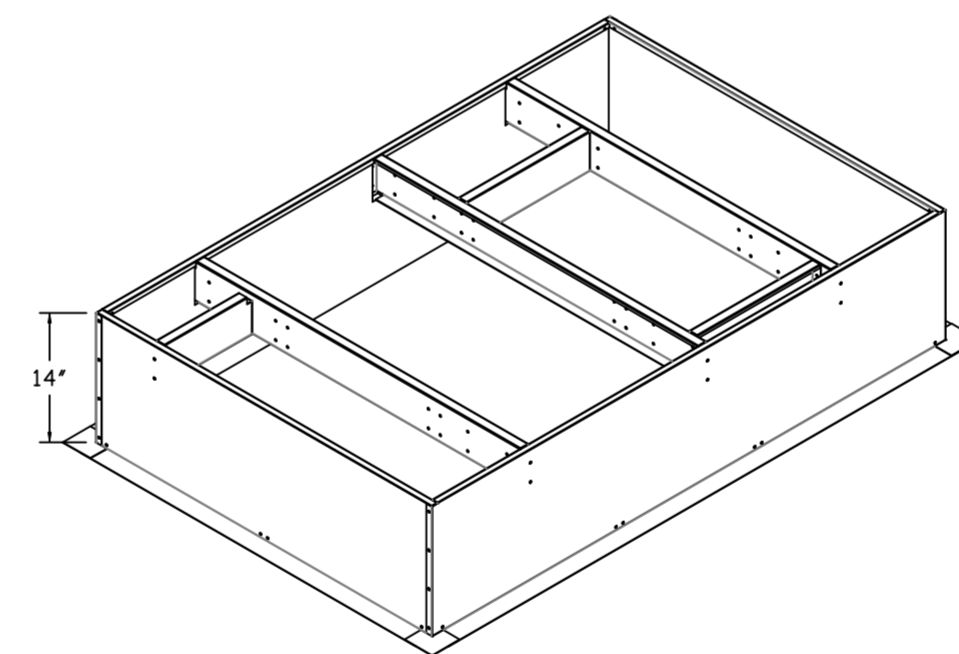
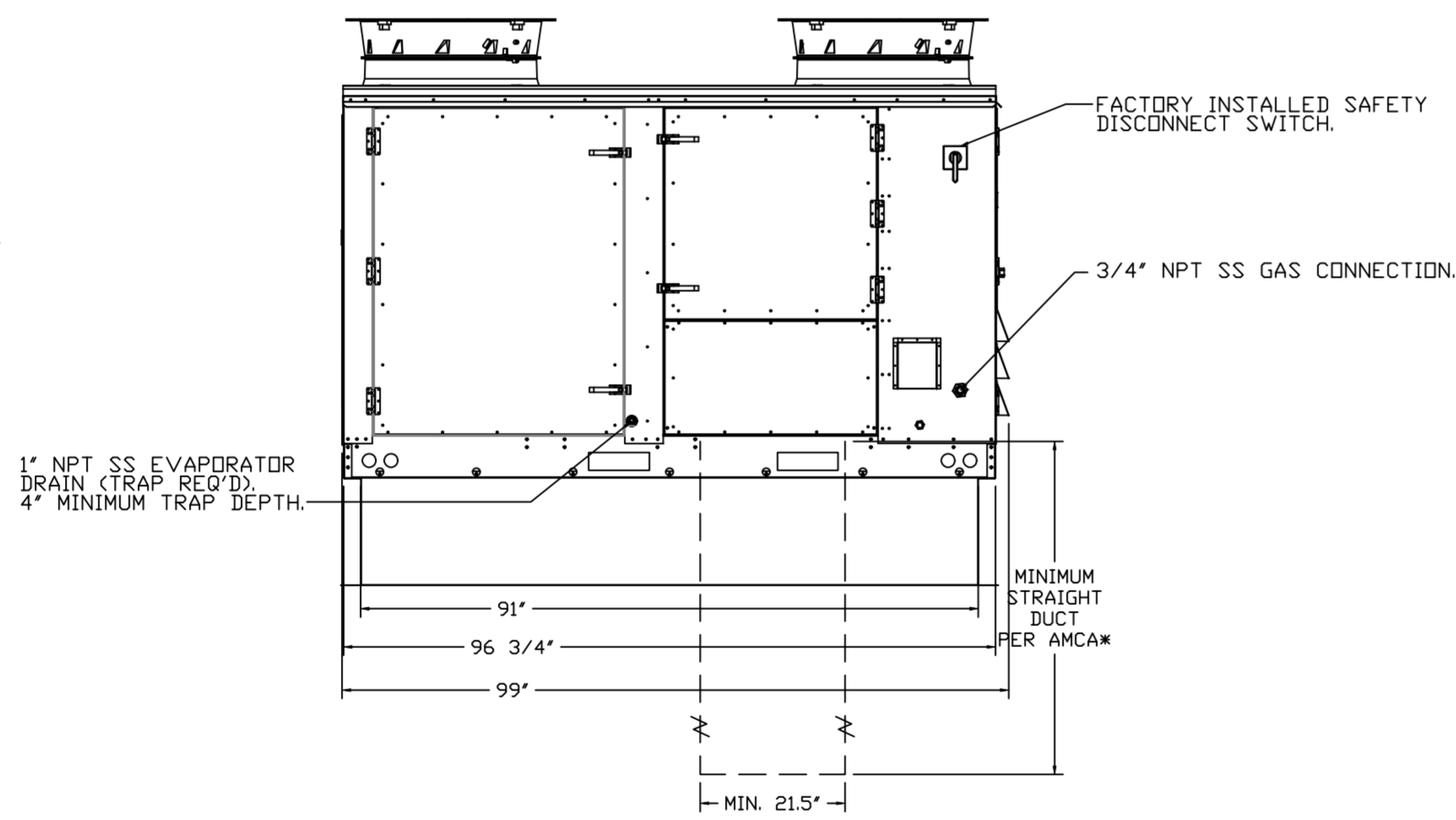
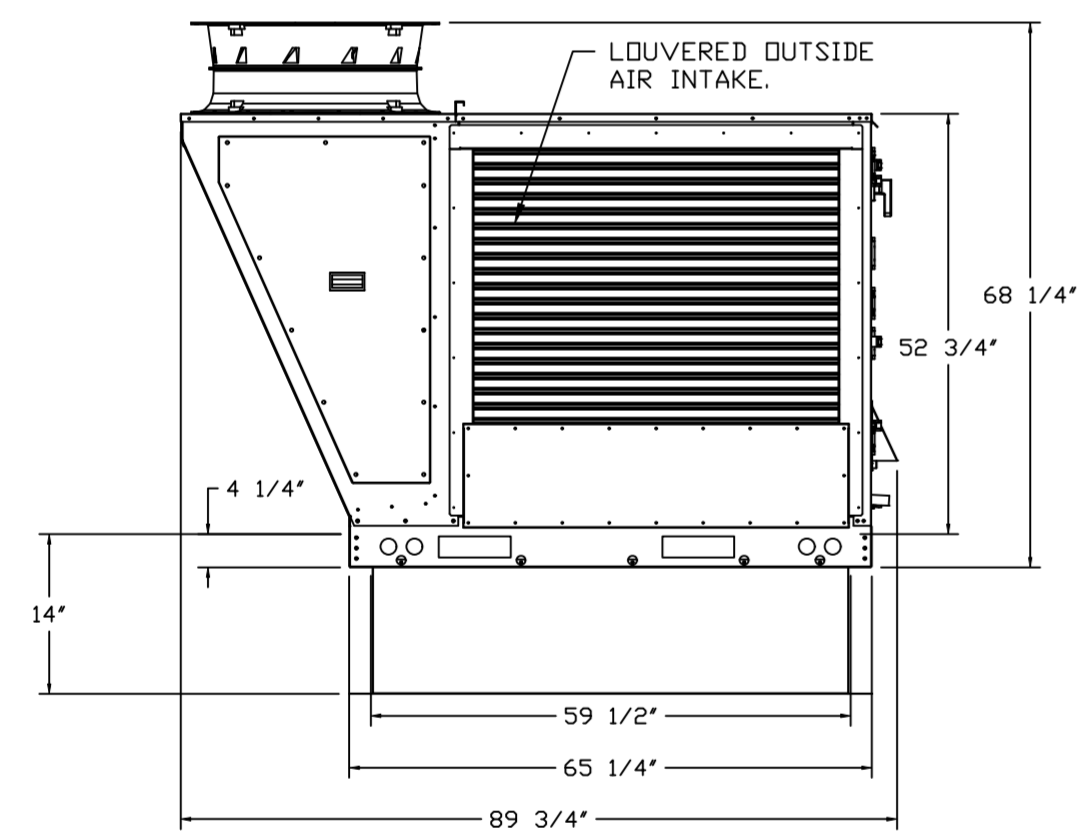
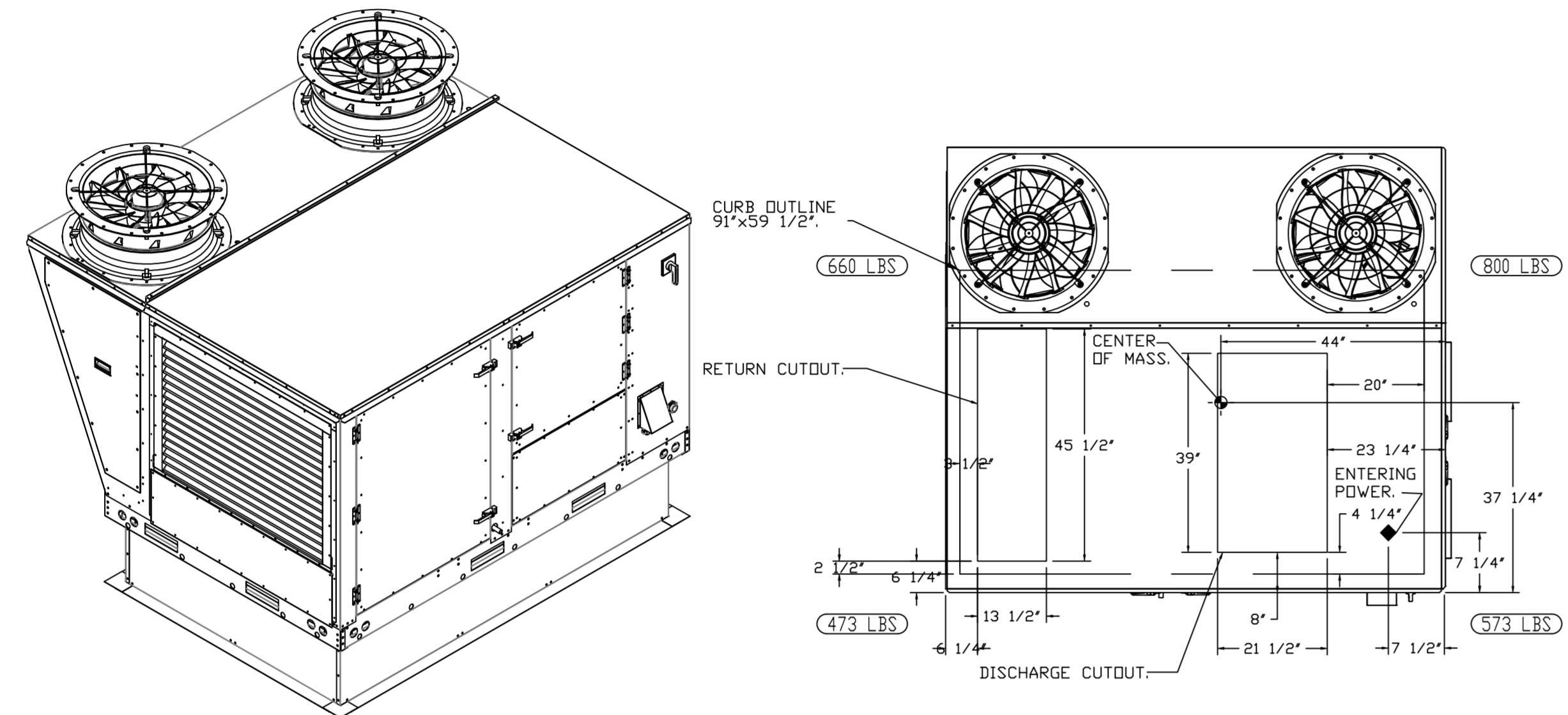
MASTER DRAWING

SHEET NO. 2

NOTES:

- DO NOT OBSTRUCT OUTSIDE AIR INLET, OUTSIDE AIR COIL OR OUTSIDE AIR FAN.
-  DENOTES CORNER WEIGHT.
- ROOF OPENING MUST BE 2' SMALLER THAN CURB DIMENSIONS IN BOTH DIRECTIONS.

*NOTE: SUPPLY DUCT MUST BE INSTALLED TO MEET SMACNA STANDARDS. A MINIMUM STRAIGHT DUCT LENGTH MUST BE MAINTAINED DOWNSTREAM OF UNIT DISCHARGE AS OUTLINED IN AMCA PUBLICATION 201. WHEN USING RECTANGULAR DUCTWORK, ELBOWS MUST BE RADIUS THROAT, RADIUS BACK WITH TURNING VANES. FLEXIBLE DUCTWORK AND SQUARE THROAT/SQUARE BACK ELBOWS SHOULD NOT BE USED. ANY TRANSITION AND/OR TURNS IN THE DUCTWORK WILL CAUSE SYSTEM EFFECT. SYSTEM EFFECT WILL DRASTICALLY INCREASE STATIC PRESSURE AND REDUCE AIRFLOW. DO NOT RELY ON UNIT TO SUPPORT DUCT IN ANY WAY. FAILURE TO PROPERLY SIZE DUCTWORK MAY CAUSE SYSTEM EFFECTS AND REDUCE PERFORMANCE OF THE EQUIPMENT. SUGGESTED STRAIGHT DUCT SIZE IS 21.5" x 39".



REVISIONS

DESCRIPTION	DATE

CAPTIVE

www.captiveair.com

HBT Foodservice

104 W 8th St Suite 204, Kansas City, MO, 64105 PHONE: (816) 221-8575 FAX: (816) 221-8311 EMAIL: reg9@captveaire.com

Freddy's - Indianapolis, IN

INDIANAPOLIS, IN, 46201

DATE: 1/3/2023

DWG.#: 5791906

DRAWN BY: michael.co

SCALE: 1/2" = 1'-0"

MASTER DRAWING

SHEET NO. 3

