

System Checksums

By Acertus

COOLING COIL PEAK				CLG SPACE PEAK				HEATING COIL PEAK				TEMPERATURES			
Peaked at Time: Outside Air: OADBWBHR: 91/78/122				MoHr: Sum of OADB: Peaks				MoHr: Heating Design OADB: 49				SADB Ra Plenum Cooling Heating 96.6 89.0			
Space	Plenum	Net	Percent	Space	Percent	Space	Percent	Space Peak	Coil Peak	Percent	Return	Return	Return	Return	Return
Sens. + Lat	Sens. + Lat	Total	Of Total	Sensible	Of Total	Space Sens	Total Sens	Space Sens	Total Sens	Of Total	Fm Ret/DA	Fm Ret/DA	Fm Ret/DA	Fm Ret/DA	Fm Ret/DA
Btu/h	Btu/h	Btu/h	(%)	Btu/h	(%)	Btu/h	Btu/h	Btu/h	Btu/h	(%)	Btu/h	Btu/h	Btu/h	Btu/h	Btu/h
Envelope Loads															
Skyline Solar	0	0	0	0	0	0	0	0	0	0	0	0	0	0	0
Skyline Cond	0	0	0	0	0	0	0	0	0	0	0	0	0	0	0
Roof Cond	0	15,703	15,703	10	0	0	0	0	-7,874	6.73	0	0	0	0	0
Glass Solar	14,782	0	14,782	9	16,207	16	16,207	10	0	0.00	0	0	0	0	0
Glass/Door Cond	6,798	0	6,798	4	5,707	5	5,707	3	-13,518	11.55	-13,518	-13,518	0.0	0.0	0.0
Wall Cond	4,252	1,204	5,456	3	5,430	5	5,430	3	-4,201	3.59	-4,201	-4,201	0.0	0.0	0.0
Partition/Door	0	0	0	0	0	0	0	0	0	0.00	0	0	0	0	0
Floor	0	0	0	0	0	0	0	0	-4,507	3.85	-4,507	-4,507	0.0	0.0	0.0
Adjacent Floor	0.00	0.00	0.00	0.00	0.00	0.00	0.00	0.00	0.00	0.00	0.00	0.00	0.00	0.00	0.00
Infiltration	0	0	0	0	0	0	0	0	0	0.00	0	0	0	0	0
Sub Total ==>	25,832	16,907	42,739	26	27,435	26	27,435	26	-21,279	-30,099	25.72	-21,279	-21,279	0.0	0.0
Internal Loads															
Lights	19,514	4,617	24,132	15	19,514	19	19,514	12	0	0.00	0	0	0	0	0
People	23,405	0	23,405	14	12,199	12	12,199	7	0	0.00	0	0	0	0	0
Misc	41,091	0	41,091	25	41,091	40	41,091	25	0	0.00	0	0	0	0	0
Sub Total ==>	84,010	4,617	88,628	54	72,804	70	72,804	34	0	0.00	0	0	0	0	0
Ceiling Load	3,939	-3,939	0	0	3,712	4	3,712	2	-1,610	0.00	-1,610	-1,610	0.0	0.0	0.0
Ventilation Load	0	0	0	0	0	0	0	0	-26,375	22.54	-26,375	-26,375	0.0	0.0	0.0
Adj Air Trans Heat	0	0	0	0	0	0	0	0	0	0.00	0	0	0	0	0
Dehumid. Ov Staging	0	0	0	0	0	0	0	0	-61,651	52.69	-61,651	-61,651	0.0	0.0	0.0
Over/Under Staging	0	0	0	0	0	0	0	0	1,107	-0.95	1,107	1,107	0.0	0.0	0.0
Exhaust Heat	-2,190	-2,190	-1	0	0	0	0	0	0	0.00	0	0	0	0	0
Sup. Fan Heat	0	0	0	0	0	0	0	0	0	0.00	0	0	0	0	0
Ret. Fan Heat	0	0	0	0	0	0	0	0	0	0.00	0	0	0	0	0
Duct Heat PkUp	0	0	0	0	0	0	0	0	0	0.00	0	0	0	0	0
Underfr. Sup Ht PkUp	0	0	0	0	0	0	0	0	0	0.00	0	0	0	0	0
Supply Air Leakage	0	0	0	0	0	0	0	0	0	0.00	0	0	0	0	0
Grand Total ==>	113,782	15,996	129,778	77	103,951	100.00	103,951	77	-84,541	-117.018	100.00	-84,541	-84,541	0.0	0.0

COOLING COIL SELECTION				AREAS				HEATING COIL SELECTION			
Total Capacity	Sens. Cap.	Coil Airflow	Enter DB/WBHR	Gross Floor	Glass	%		Capacity	Coil Airflow	Ent	Lvg
ton	MBH	cfm	°F	Area	Area	(%)		MBH	cfm	°F	°F
13.7	164.7	128.9	5.058 79.7 64.9 68.4	Floor Part	3,970	0	0	-117.0	5,058	64.2	85.0
0.0	0.0	0.0	0.0 0.0 0.0 0.0	Int Door	1	0	0	0.0	0.0	0.0	0.0
0.0	0.0	0.0	0.0 0.0 0.0 0.0	Roof	297	0	0	0.0	0.0	0.0	0.0
0.0	0.0	0.0	0.0 0.0 0.0 0.0	Wall	3,743	760	20	0.0	0.0	0.0	0.0
				Est Door	63	0	0	0.0	0.0	0.0	0.0

Project Name: 2120132 C-Store - Parrish, FL
 Dataset Name: C-Store.trc
 TRACE8 700 v6.3.5 calculated at 04:24 PM on 05/11/2021
 Alternative - 1 System Checksums Report Page 2 of 2

MECHANICAL LEGEND

SYMBOL	DESCRIPTION	SYMBOL	DESCRIPTION	ABBREVIATIONS
	DIFFUSER		EQUIPMENT (SEE SCHEDULE)	AFF ABOVE FINISHED FLOOR
	RETURN AIR GRILLE		EQUIPMENT NUMBER	BTU BRITISH THERMAL UNIT
	RETURN OR EXHAUST DUCT UP		INDICATES DETAIL, PLAN, SECTION, AND/OR DIAGRAM (APPLIES ONLY WHERE INDICATED ON DRAWINGS)	CFM CUBIC FEET PER MINUTE
	SUPPLY DUCT UP		INDICATES DRAWING ON WHICH DETAIL APPEARS	COMP COMPRESSOR
	SUPPLY DUCT DOWN		INDICATES TYPICAL DETAIL (APPLIES TO ALL CONTRACT DRAWINGS)	DB DRY BULB
	RETURN OR EXHAUST DUCT DOWN		INDICATES SECTION NUMBER	DN DOWN
	ROUND DUCT DOWN		INDICATES DRAWING ON WHICH DETAIL APPEARS	DX DIRECT EXPANSION
	ROUND DUCT UP		INDICATES REVISION & NUMBER	EAT EACH
	VANED ELBOW		CONNECT NEW TO EXISTING	EA ENTERING AIR TEMPERATURE
	LOW PRESSURE FLEX DUCT		DIFFUSER TYPE SIZE CFM	ESP EXTERNAL STATIC PRESSURE
	45° TAKEOFF FITTING		THERMOSTAT	ETC AND SO FORTH
	MANUAL VOLUME DAMPER		DOOR UNDERCUT	EX EXHAUST

MECHANICAL GENERAL NOTES:

- PRIOR TO SUBMITTING BID, VISIT THE SITE AND BECOME FULLY ACQUAINTED WITH THE EXISTING CONDITIONS OF THE PROJECT. REVIEW GENERAL NOTES, SPECIFICATIONS AND ALL OTHER DRAWINGS FOR ADDITIONAL REQUIREMENTS WHICH MAY NOT BE SPECIFICALLY CALLED OUT IN THIS PORTION OF THE CONSTRUCTION DOCUMENTS. NOTIFY ARCHITECT, ENGINEER AND/OR OWNER OF ANY CONFLICTS OR DISCREPANCIES PRIOR TO SUBMISSION OF BID.
- COORDINATE THE INSTALLATION OF MECHANICAL SYSTEMS WITH OTHER TRADES TO ENSURE A NEAT AND ORDERLY INSTALLATION. DUCTWORK AND PIPING SHALL BE ROUTED TO AVOID CONFLICTS WITH ELECTRICAL PANELS, LIGHTING FIXTURES, ETC.
- TAKE NECESSARY PRECAUTIONS TO AVOID DAMAGING EXISTING SURFACES AND EQUIPMENT TO REMAIN FOR NEW INSTALLATION DURING WORK. REPAIR ANY DAMAGE CAUSED DURING CONSTRUCTION AT NO COST TO THE OWNER.
- ALL MECHANICAL EQUIPMENT SHOWN ON THE MECHANICAL PLANS SHALL BE PROVIDED BY THE MECHANICAL CONTRACTOR UNLESS OTHERWISE NOTED.
- NEW MECHANICAL EQUIPMENT, FIELDWORK AND PIPING IS SHOWN AT APPROXIMATE LOCATIONS. FIELD MEASURE FINAL DUCTWORK AND PIPING LOCATIONS PRIOR TO FABRICATION AND SHALL MAKE ADJUSTMENTS AS REQUIRED TO FIT THE DUCTWORK AND PIPING WITHIN THE AVAILABLE SPACE. FIELD VERIFY FINAL LOCATIONS TO INSTALL EQUIPMENT IN ACCORDANCE WITH THE MANUFACTURER'S RECOMMENDATIONS REGARDING SERVICE CLEARANCE AND PROPER AIRFLOW CLEARANCE AROUND EQUIPMENT.
- REFER TO ARCHITECTURAL DRAWINGS FOR ALL RELATED CONSTRUCTION DETAILS AS APPLICABLE TO THE HVAC SYSTEM. CHASE AND PENETRATIONS INTENDED FOR DUCTWORK AND PIPING SHALL BE VERIFIED WITH ARCHITECTURAL DRAWINGS PRIOR TO INSTALLATION.
- COORDINATE LOCATION OF ROOF PENETRATIONS WITH THE EXISTING CONDITIONS AND ARCHITECTURAL DRAWINGS.
- SEAL ALL PENETRATIONS THROUGH THE BUILDING COMPONENTS IN ACCORDANCE WITH THE CONSTRUCTION SPECIFICATIONS. FIREPROOF ALL PENETRATIONS THROUGH FIRE RATED COMPONENTS IN ACCORDANCE WITH U.L. REQUIREMENTS.
- COORDINATE THE EXACT MOUNTING SIZE AND FRAME TYPE OF DIFFUSERS, REGISTERS AND GRILLES WITH THE SUPPLIER TO MEET THE CEILING, WALL, AND DUCT INSTALLATION REQUIREMENTS.
- LOCATION OF CEILING DIFFUSERS, REGISTERS, AND GRILLES SHALL BE ADJUSTED AS REQUIRED TO ACCOMMODATE FINAL CEILING AND LIGHTING LOCATIONS.
- DUCTWORK CROSSING FIRE RATED WALL OR OTHER FIRE RATED ASSEMBLIES SHALL BE MINIMUM 26 GAUGE SHEET METAL.
- PROVIDE FIRE AND/OR FIRE/SMOKE DAMPERS IN DUCTWORK AT CEILINGS AND WALLS AS REQUIRED BY BUILDING CODE AUTHORITY HAVING JURISDICTION. FIRE AND FIRE/SMOKE DAMPERS SHALL CONFORM TO NFPA AS APPLICABLE.
- PROVIDE WALL AND/OR DUCT ACCESS PANELS OR DOORS FOR ACCESS TO ALL FIRE AND/OR FIRE/SMOKE DAMPERS. ACCESS PANEL OR DOOR SHALL BE MINIMUM SIZE OF 6"x6" AND SHALL BE INSTALLED WITH 12" OF DAMPER. PROVIDE A REMOVABLE DUCT SECTION WHERE DUCT SIZE IS TOO SMALL FOR A 6"x6" ACCESS DOOR.
- THERMOSTATS AND HUMIDISTATS SHALL BE LOCATED AND SET BY MECHANICAL CONTRACTOR AND WIRED IN CONDUIT BY ELECTRICAL CONTRACTOR. VERIFY EXACT LOCATIONS WITH ARCHITECT PRIOR TO INSTALLATION. MOUNTING HEIGHTS SHALL BE 48" AFF TO MEET ADA REQUIREMENTS UNLESS OTHERWISE NOTED ON PLANS.
- COORDINATE THE LOCATION AND ELEVATION OF WALL-MOUNTED DEVICES WITH ANY WALL MOUNTED ITEMS INDICATED ON THE ARCHITECTURAL DRAWINGS. CONTRACTOR WILL NOT BE REIMBURSED FOR RELOCATION OF ANY WALL-MOUNTED DEVICES CAUSED BY A LACK OF COORDINATION.
- ALL BRANCH DUCT CONNECTIONS AND TAKE-OFFS TO INDIVIDUAL DIFFUSERS, REGISTERS, AND GRILLES SHALL HAVE A PREFABRICATED 45 DEGREE, HIGH EFFICIENCY, RECTANGULAR/ROUND BRANCH DUCT TAKEOFF FITTING WITH MANUAL BALANCING DAMPER AND LOOKING QUADRANT.
- BRANCH DUCTWORK TO AIR OUTLETS SHALL BE SAME SIZE AS OUTLET NECK SIZE UNLESS OTHERWISE NOTED.
- RIGID DUCTWORK INSULATION: PROVIDE R-6 MINIMUM INSULATION WRAP ON ALL CONCEALED DUCTWORK. PROVIDE R-4.2 MINIMUM INTERNAL DUCT LINER ON ALL EXPOSED SPIRAL DUCTWORK. PROVIDE R-6 MINIMUM INTERNAL DUCT LINER ON ALL EXPOSED RECTANGULAR DUCTWORK. DUCT SIZES ON MECHANICAL PLANS INDICATE CLEAR INSIDE DIMENSIONS. SHEET METAL SIZES SHALL INCREASE ACCORDINGLY. PROVIDE R-12 MINIMUM INSULATION ON ALL DUCTWORK INSTALLED IN UNCONDITIONED SPACES. REFER TO SPECIFICATIONS FOR MORE INFORMATION.
- FLEXIBLE DUCT WORK SHALL BE THERMAFLEX TYPE MKE, FLEXMASTER TYPE BM, OR APPROVED EQUAL. SHALL BE LISTED UNDER 181 AS CLASS 1 AIR DUCT AND SHALL BE PROVIDED WITH INTEGRAL R-6 MINIMUM FIBERGLASS INSULATION. FLEXIBLE DUCTWORK SHALL NOT EXCEED 5'-0" IN LENGTH AND SHALL BE INSTALLED AND SUPPORTED TO AVOID SHARP BENDS AND SAGGING. FLEXIBLE DUCTWORK IS NOT ALLOWED IN EXPOSED AREAS.

VENTILATION REQUIREMENTS

(BASED ON ASHRAE 62.1, TABLE 6.1)

ROOM	SPACE TYPE	AREA (SQFT.)	DENSITY (#/1000 SQFT.)	OCCUPANTS	AREA OUTDOOR AIR RATE (CFM/SQFT.)	PEOPLE OUTDOOR AIR RATE (CFM/PERSON)	OUTDOOR AIR REQUIRED (CFM)	EXHAUST REQUIRED (CFM)
SALES FLOOR	SUPERMARKET	2134	8	18	0.06	7.5	252	0
SALES COUNTER	SUPERMARKET	267	8	3	0.06	7.5	33	0
OFFICE	OFFICE	71	5	1	0.06	5	7	0
MENS RR	RESTROOM	17	0	0	0	0	0	2.25
WOMENS RR	RESTROOM	180	0	0	0	0	0	150
CORRIDOR	CORRIDOR	103	0	0	0.06	0	7	0
MOP	STORAGE/JANITOR	18	0	0	0.12	0	3	25
DINING	DINING	356	70	25	0.18	7.5	251	0
COOKING	KITCHEN (COOKING)	51	20	2	0.12	7.5	14	0
COOLERS	REFRIGERATED WAREHOUSE	465	0	0	0	10	0	0
BEER CAVE	REFRIGERATED WAREHOUSE	141	0	0	0	10	0	0
BACK OF HOUSE	STORAGE ROOMS	499	0	0	0.12	0	60	0
TOTAL:							632	400
EV =							0.8	
VOT =							790	400

EXHAUST FAN SCHEDULE

MARK	MANUFACTURER	MODEL	DRIVE	CFM	ESP (IN.)	SONES	FAN RPM	ELECTRICAL HP (W)	FLA	V/PH/HZ	WEIGHT (LB.)	NOTES
EF-1	GREENHECK	G-090-VG	DIRECT	450	0.5	7.3	1542	1/10	1.4	120/1/60	60	1,2,3,4,5,6,7

NOTES:
 1. INSTALL PER MANUFACTURER'S RECOMMENDATIONS.
 2. PROVIDE WITH FLORIDA WIND RATED ROOF CURB.
 3. PROVIDE WITH SPEED CONTROLLER FOR BALANCING.
 4. PROVIDE WITH MANUFACTURER'S DISCONNECT SWITCH.
 5. PROVIDE WITH BACKDRAFT DAMPER.
 6. PROVIDE WITH BIRDSCREEN.
 7. FAN SHALL RUN CONTINUOUSLY.

GRILLE, REGISTER, AND DIFFUSER SCHEDULE

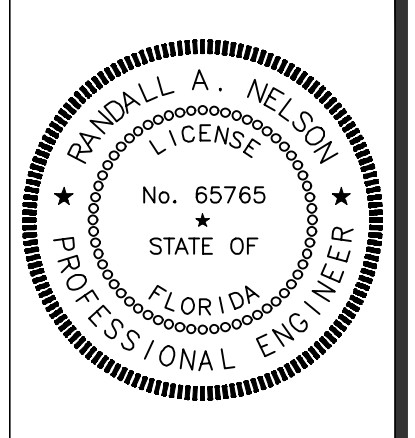
MARK	MANUFACTURER	MODEL	FACE TYPE	MOUNTING LOCATION	FACE SIZE (IN.)	NECK SIZE (IN.)	NOTES
SD-1	TITUS	TMR	ROUND CONE	DUCT	22"ø	SEE PLANS	1,2,5
SD-2	TITUS	OMNI	PLAQUE	LAY-IN	24"x24"	SEE PLANS	1,2,3,5,6
SD-3	TITUS	OMNI	PLAQUE	SURFACE	24"x24"	SEE PLANS	1,2,3,5,6,7
RG-1	TITUS	PAR	LOUVERED	LAY-IN	22"x22"	SEE PLANS	1,3,4,5,6,8
EG-1	TITUS	PAR	LOUVERED	SURFACE	12"x12"	10"x10"	1,3,4,5,6,7,8

NOTES:
 1. NECK SIZE SHOWN ON DRAWINGS.
 2. 4-WAY THROW PATTERN UNLESS OTHERWISE SHOWN ON DRAWINGS.
 3. BAKED ENAMEL FINISH, WHITE.
 4. PROVIDE NECK FOR DUCT CONNECTION.
 5. BRANCH DUCT SIZE SHALL BE SAME AS NECK SIZE UNLESS OTHERWISE SHOWN ON DRAWINGS.
 6. FRAME TYPE TO MATCH CEILING CONSTRUCTION, COORDINATED WITH ARCHITECTURAL REFLECTED CEILING PLAN.
 7. PROVIDE WITH OPPOSED BLADE DAMPER OPERABLE FROM NECK OF DIFFUSER.
 8. ALUMINUM CONSTRUCTION.

ROOFTOP AIR CONDITIONING UNIT SCHEDULE - ELECTRIC

MARK	MANUFACTURER	MODEL	SUPPLY AIR	MIN OA	SUPPLY FAN		COOLING COIL				HEATING DATA		UNIT ELECTRICAL DATA			WEIGHT (LB.)	NOTES
					ESP	HP	TOTAL (MBH)	SENS. (MBH)	EAT (DB/WB)	EER (SEER)	MBH	KW	V/PH/HZ	MCA	MOCF		
RTU-1	CARRIER	50HC**17	6000	800	0.8	5	175.9	137.6	77.8/64.8	12.2	156.7	45.9	480/3/60	66.2	80	2675	1,2,3,4,5,6,7,8,9,10,11,12,13,14

NOTES:
 1. ALL COOLING CAPACITIES SHOWN ARE BASED ON AN AMBIENT OUTDOOR TEMPERATURE OF 95.8°F, DB & 76.8°F WB SUMMER DESIGN TEMPERATURE AND A WINTER DESIGN TEMPERATURE OF 34.2°F.
 2. PROVIDE WITH 14" FLORIDA WIND RATED ROOF CURB.
 3. CONTRACTOR SHALL INSTALL ALL NEW FILTERS PRIOR TO TEST AND BALANCE WORK.
 4. PROVIDE UNIT WITH LOUVERED HALL GUARDS.
 5. PROVIDE UNIT WITH UNPOWERED GFCI CONVENIENCE OUTLET.
 6. PROVIDE UNIT WITH DIFFERENTIAL ENTHALPY TYPE ECONOMIZER WITH BAROMETRIC RELIEF.
 7. PROVIDE UNIT WITH MOTORIZED OUTDOOR AIR DAMPER.
 8. PROVIDE UNIT WITH FACTORY INSTALLED HINGED ACCESS PANEL.
 9. PROVIDE UNIT WITH FACTORY MOUNTED DISCONNECT SWITCH.
 10. PROVIDE UNIT WITH FACTORY INSTALLED SUPPLY AND RETURN SMOKE DETECTORS. PROVIDED WITH FIELD INSTALLED REMOTE TEST STATION AND VISABLE AND AUDIBLE SIGNALING DEVICE.
 11. PROVIDE UNIT WITH HOT GAS REHEAT FOR HUMIDITY CONTROL.
 12. PROVIDE UNIT WITH COASTAL COIL COATING PACKAGE.
 13. PROVIDE UNIT WITH 2 SPEED FAN CONTROL.
 14. PROVIDE WITH FLOAT SWITCH IN DRAIN PAN BELOW OVERFLOW LEVEL, UNIT SHALL SHUT DOWN UPON ALARM FROM FLOAT SWITCH.



SIGNATURE DATE: 11/10/2022



DAYBREAK MARKET
CONVENIENCE STORE
 HWY 301 & OXFORD RD
 PARRISH, FLORIDA

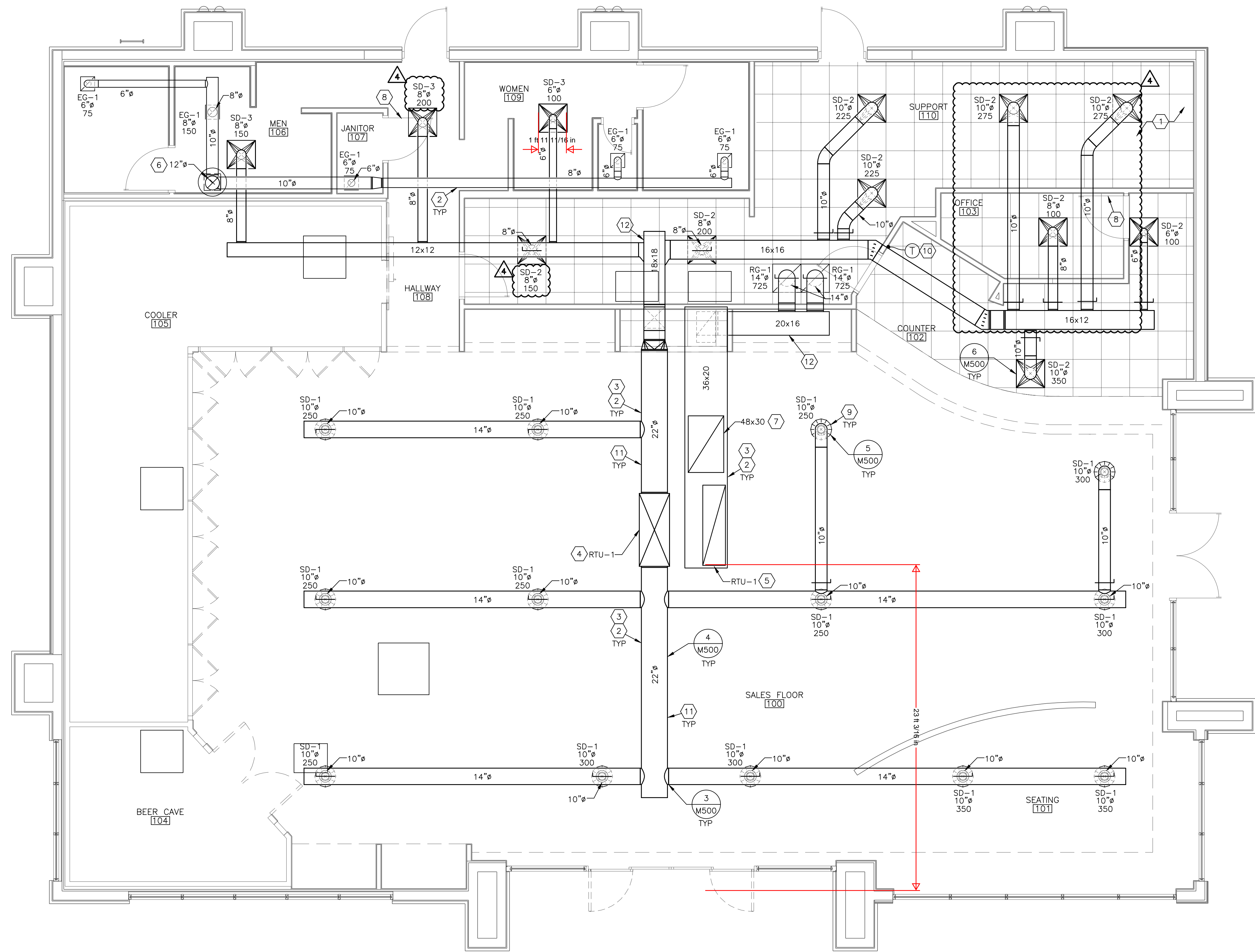


REV	DATE	DESCRIPTION
1	06/25/21	COUNTY COMMENTS
4	07/27/22	PROTO UPDATES

ORIGINAL ISSUE DATE: 05/13/2021

SHEET TITLE:
 MECHANICAL NOTES, LEGEND, AND SCHEDULES

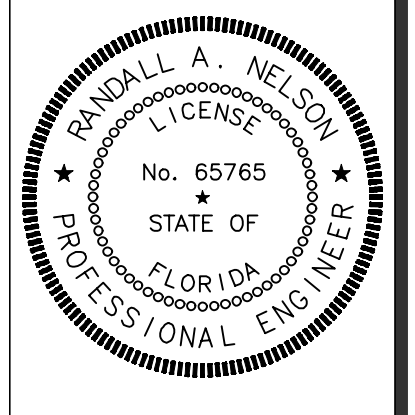
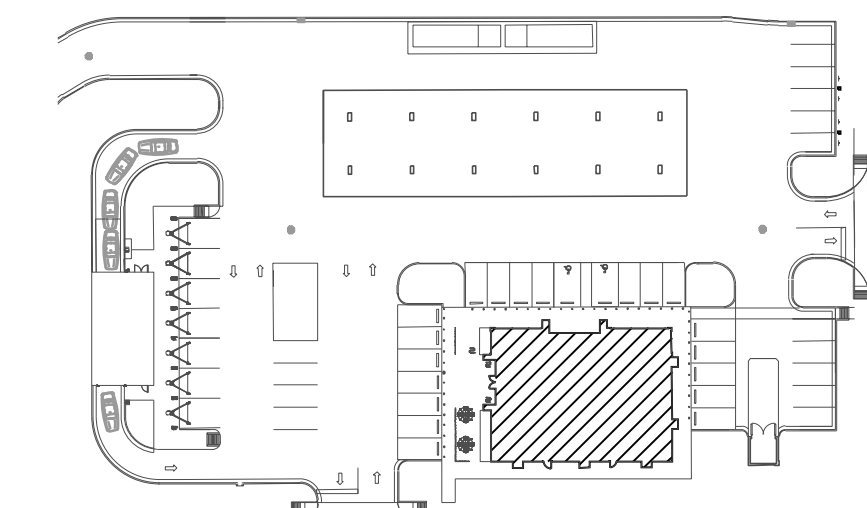
SHEET NUMBER:
M100



1 MECHANICAL PLAN
1/4"=1'-0"

MECHANICAL KEYNOTES: (1,2,X)

1. COORDINATE INSTALLATION OF EQUIPMENT, DUCTWORK, AND PIPING WITH ALL TRADES. DUCTWORK AND PIPING SHALL NOT BE ROUTED OVER ELECTRICAL PANELS, DISCONNECTS, TRANSFORMERS, OR OTHER ELECTRICAL EQUIPMENT. VERIFY LOCATION OF ALL ELECTRICAL EQUIPMENT BEFORE INSTALLATION OF HVAC DUCTWORK AND PIPING.
2. PROVIDE GALVANIZED STEEL DUCTWORK, SIZES AS NOTED ON DRAWINGS. DUCTWORK SIZES ARE CLEAR INSIDE DIMENSIONS. REFER TO SPECIFICATIONS FOR INSULATION REQUIREMENTS.
3. ROUTE DUCTS AS HIGH AS POSSIBLE ABOVE BOTTOM OF CHORD AND BETWEEN JOIST. COORDINATE ALL DUCTWORK ROUTING AND SIZING WITH JOIST AND TRUSS LOCATIONS.
4. ROUTE FULL SIZE SUPPLY DUCT UP TO ROOFTOP UNIT. FIELD VERIFY EXACT LOCATION. TRANSITION DUCTWORK AS REQUIRED FOR FULL AND COMPLETE OPERATION.
5. ROUTE FULL SIZE RETURN DUCT UP TO ROOFTOP UNIT. FIELD VERIFY EXACT LOCATION. TRANSITION DUCTWORK AS REQUIRED FOR FULL AND COMPLETE OPERATION.
6. ROUTE 12" EXHAUST DUCT UP TO EXHAUST FAN ON ROOF. FIELD COORDINATE EXACT LOCATION. TRANSITION DUCTWORK AS REQUIRED FOR FULL AND COMPLETE OPERATION.
7. PROVIDE RETURN OPENING IN TOP OF DUCT. SIZE AS INDICATED ON PLAN. COVER OPENING WITH 1/2"x1/2" GALVANIZED STEEL HARDWARE CLOTH. MAINTAIN MINIMUM 10" CLEARANCE FROM OPENING IN TOP OF DUCT TO ROOF DECK.
8. UNDERCUT DOOR A MINIMUM OF 1" FOR AIRFLOW.
9. MOUNT BOTTOM OF DIFFUSER AT 12'-6" AFF.
10. PROVIDE 7-DAY PROGRAMMABLE THERMOSTAT WITH AUTO CHANGE-OVER FOR HEATING/COOLING AND INTEGRAL DEHUMIDIFICATION OUTPUT. INSTALL AT 48" AFF. THERMOSTAT SHALL BE COMPATIBLE WITH ROOFTOP UNIT. VERIFY INSTALLATION LOCATION WITH OWNER.
11. ALL EXPOSED ROUND DUCTWORK SHALL BE INTERNALLY LINED SPIRAL DUCTWORK. REFER TO MECHANICAL SPECIFICATIONS FOR ADDITIONAL INFORMATION.
12. ROUTE DUCTWORK AS HIGH AS POSSIBLE BELOW STRUCTURE.



SIGNATURE DATE: 11/10/2022



DAYBREAK MARKET
CONVENIENCE STORE
HWY 301 & OXFORD RD
PARRISH, FLORIDA



REV	DATE	DESCRIPTION
4	07/27/22	PROTO UPDATES

ORIGINAL ISSUE DATE: 05/13/2021

SHEET TITLE:
MECHANICAL CONVENIENCE STORE PLAN

SHEET NUMBER:
M201



