

FOR QUESTIONS, CALL THE
Highwoods Group
REGION 40
PHONE: (919) 875-0420
EMAIL: reg40@captiveaire.com

PATENT NUMBERS
EXHAUST HOODS ND-2/BD-2/SND-2 (CANADA) - CA PATENT 2520435 C.

HOOD INFORMATION - JOB#6076686

HOOD NO	TAG	MODEL	MANUFACTURER	LENGTH	MAX COOKING TEMP	TYPE	APPLIANCE DUTY	DESIGN CFM/FT	TOTAL EXH CFM	EXHAUST PLENUM RISER(S)				HOOD CONSTRUCTION	HOOD CONFIG			
										WIDTH	LENG	HEIGHT	DIA		CFM	VEL	SP	END TO END
1		5424 ND-2	CAPTIVEAIRE	9' 4"	600 DEG	I	HEAVY	204	1900	10'	18'	4'	1900	1520	-0.818'	430 SS WHERE EXPOSED	ALONE	ALONE

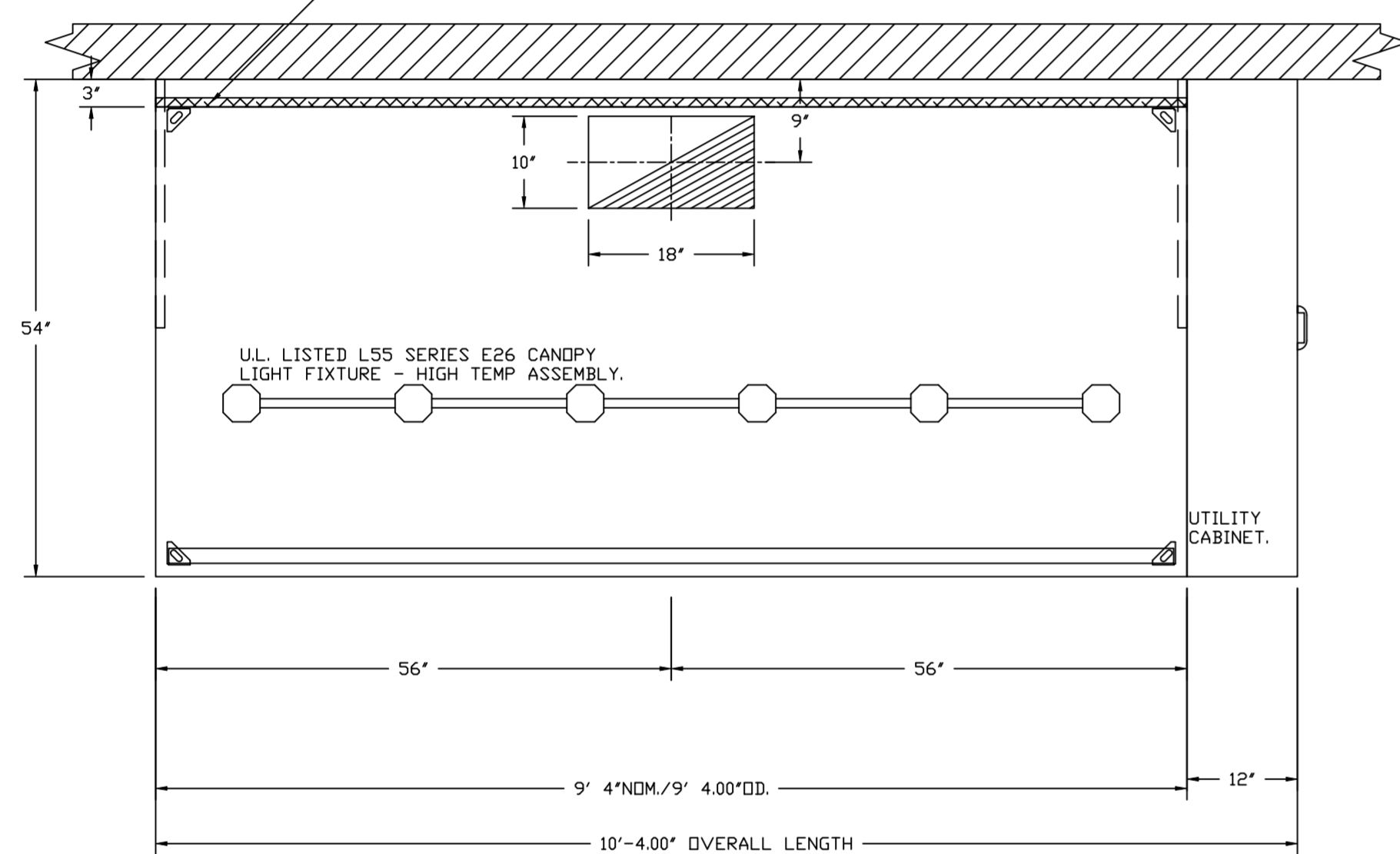
HOOD INFORMATION

HOOD NO	TAG	FILTER(S)				LIGHT(S)				UTILITY CABINET(S)				FIRE SYSTEM HANGING WEIGHT			
		TYPE	QTY	HEIGHT	LENGTH	EFFICIENCY @ 7 MICRONS	QTY	TYPE	WIRE GUARD	LOCATION	SIZE	FIRE SYSTEM TYPE	SIZE		ELECTRICAL MODEL #	SWITCHES QUANTITY	
1		CAPTRATE SOLID FILTER	7	16"	16"	85% SEE FILTER SPEC	6	L55 SERIES E26	NO	RIGHT	12"x54"x24"	ANSUL R-102	3.0/3.0	SC-110110MA	1 LIGHT 1 FAN	YES	686 LBS

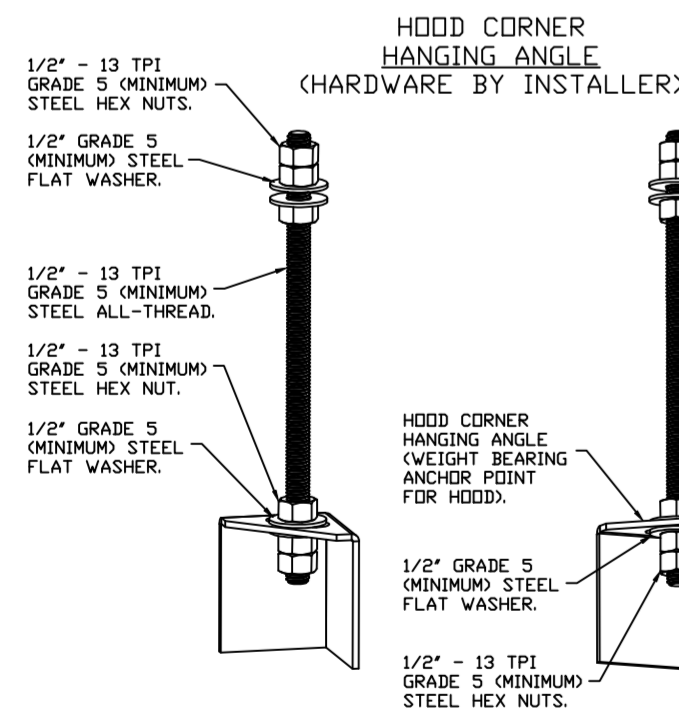
HOOD OPTIONS

HOOD NO	TAG	OPTION
1		FIELD WRAPPER 10.00" HIGH FRONT, LEFT, RIGHT. INSULATION FOR BACK OF HOOD. RISER SENSOR INSTALL 6IN PLEN. RIGHT VERTICAL END PANEL 27" TOP WIDTH, 21" BOTTOM WIDTH, 80" HIGH INSULATED 430 SS. LEFT VERTICAL END PANEL 27" TOP WIDTH, 21" BOTTOM WIDTH, 80" HIGH INSULATED 430 SS. FULL DIMENSION HANGING BRACKET - FRONT.

1" LAYER OF INSULATION FACTORY INSTALLED IN INTERNAL BACK STANDOFF. MEETS 0 INCH REQUIREMENTS FOR CLEARANCE TO COMBUSTIBLE SURFACES.

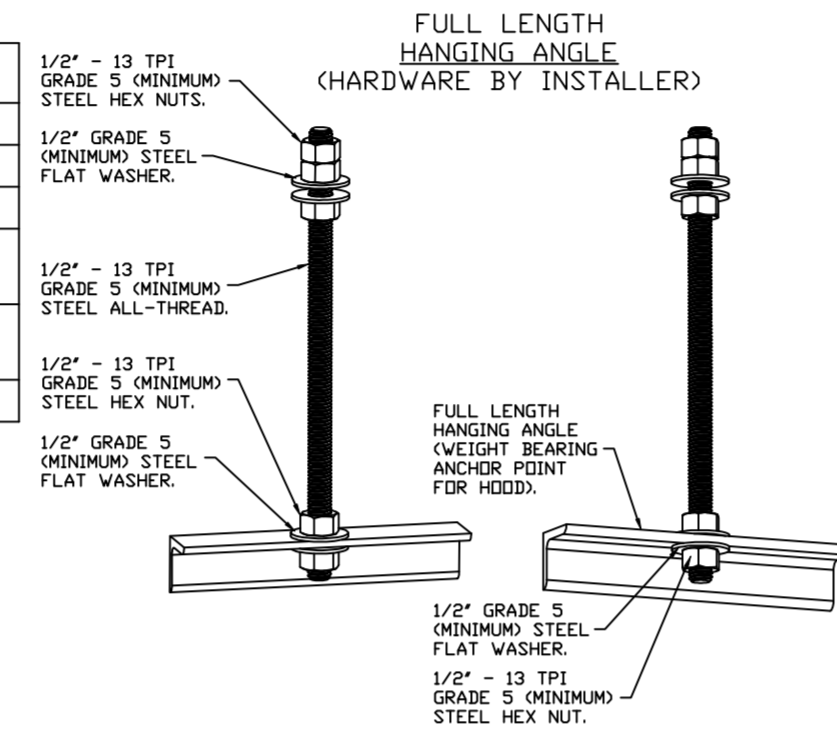


PLAN VIEW - HOOD #1
9' 4.00" LONG 5424ND-2



ASSEMBLY INSTRUCTIONS

HANGING ANGLE MUST BE SUPPORTED WITH 1/2" - 13 TPI GRADE 5 (MINIMUM) ALL-THREAD, SANDWICH HANGING ANGLES AND CEILING ANCHOR POINTS WITH 1/2" GRADE 5 (MINIMUM) STEEL FLAT WASHERS AND 1/2" - 13 TPI GRADE 5 (MINIMUM) HEX NUTS AS SHOWN. MUST USE DOUBLED HEX NUT CONFIGURATION BENEATH HOOD HANGING ANGLES AND ABOVE CEILING ANCHORS. MAINTAIN 1/4" OF EXPOSED THREADS BENEATH BOTTOM HEX NUT. TORQUE ALL HEX NUTS TO 57 FT-LBS.



ASSEMBLY INSTRUCTIONS

HANGING ANGLE MUST BE SUPPORTED WITH 1/2" - 13 TPI GRADE 5 (MINIMUM) ALL-THREAD, SANDWICH HANGING ANGLES AND CEILING ANCHOR POINTS WITH 1/2" GRADE 5 (MINIMUM) STEEL FLAT WASHERS AND 1/2" - 13 TPI GRADE 5 (MINIMUM) HEX NUTS AS SHOWN. MUST USE DOUBLED HEX NUT CONFIGURATION ABOVE CEILING ANCHORS. SINGLE HEX NUT BENEATH HANGING ANGLE IS ACCEPTABLE FOR FULL LENGTH HANGING ANGLES. MAINTAIN 1/4" OF EXPOSED THREADS BENEATH BOTTOM HEX NUT. TORQUE ALL HEX NUTS TO 57 FT-LBS.

SUBMITTAL REVIEW STAMP

NO EXCEPTION TAKEN
 REVISE AND RESUBMIT
 APPROVED AS NOTED
 REJECTED

Corrections or comments made on the shop drawings during this review do not relieve contractor from compliance with requirements of the drawings and specifications. This review is only for general conformance with the design concept of the project and general compliance with the information given in the contract documents. The contractor is responsible for: confirming and correlating all quantities and dimensions; selecting fabrication processes and techniques of construction; coordinating work with that of all other trades; and performing work in a safe and satisfactory manner.

Blanchard AE Group, LC.
Date: 6-29-2023 By: Isaac Dunn

SPECIFICATION: CAPTRATE® GREASE-STOP® SOLID FILTER

THE CAPTRATE GREASE-STOP SOLID FILTER IS A SINGLE-STAGE FILTER FEATURING A UNIQUE S-Baffle DESIGN IN CONJUNCTION WITH A SLOTTED REAR Baffle DESIGN, TO DELIVER EXCEPTIONAL FILTRATION EFFICIENCY.

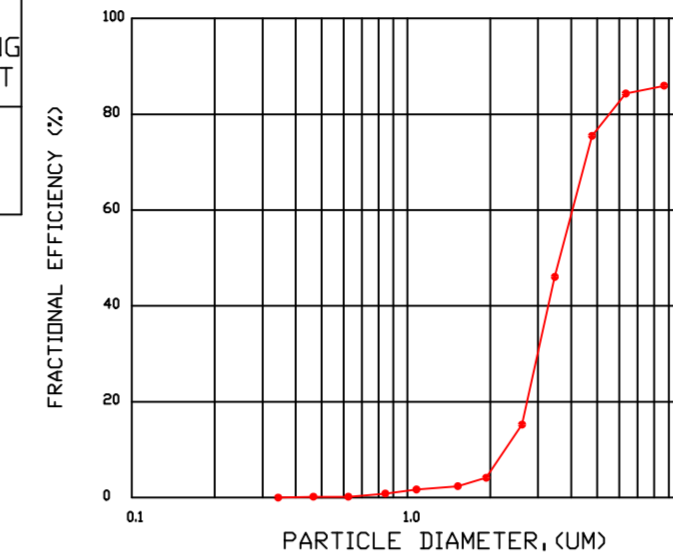
FILTER IS STAINLESS STEEL CONSTRUCTION, AND SIZED TO FIT INTO STANDARD 2-INCH DEEP HOOD CHANNEL(S).

UNITS SHALL INCLUDE STAINLESS STEEL HANDLES AND A FASTENING DEVICE TO SECURE THE TWO COMPONENTS WHEN ASSEMBLED.

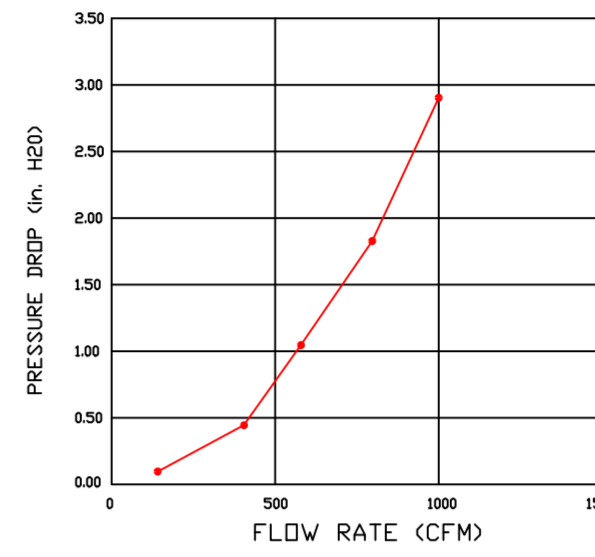
GREASE EXTRACTION EFFICIENCY PERFORMANCE SHALL REMOVE AT LEAST 75% OF GREASE PARTICLES FIVE MICRONS IN SIZE, AND 85% GREASE PARTICLES SEVEN MICRONS IN SIZE AND LARGER, WITH A CORRESPONDING PRESSURE DROP NOT TO EXCEED 1.0 INCHES OF WATER GAUGE.

THE CAPTRATE GREASE-STOP SOLID WAS TESTED TO ASTM STANDARD ASTM F2519-05. MANUFACTURER APPROVED FOR USE IN SOLID FUEL APPLICATIONS AS A SPARK ARRESTER.

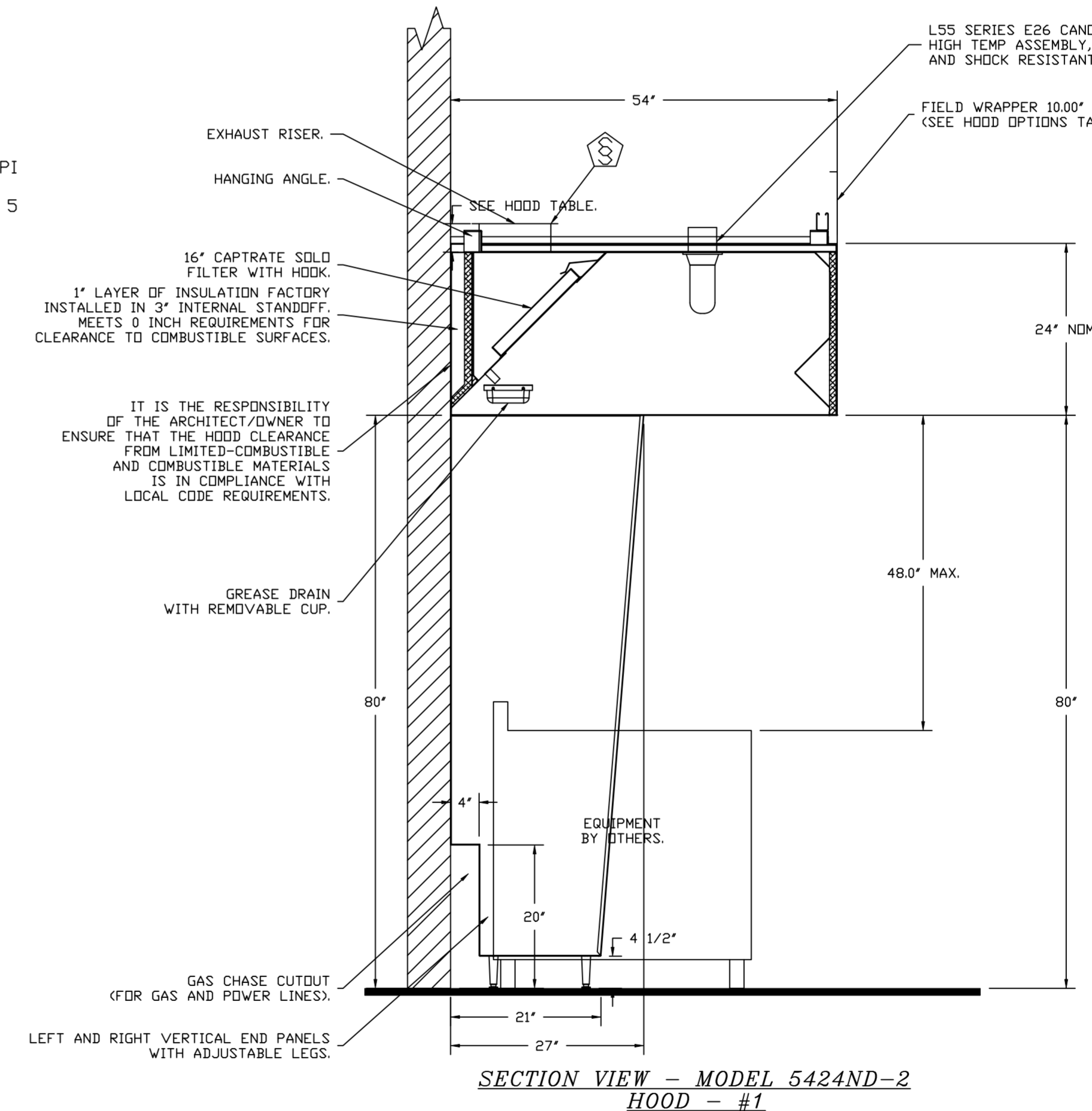
EFFICIENCY VS. PARTICLE DIAMETER



PRESSURE DROP VS. FLOW RATE



CAPTRATE FILTERS ARE BUILT IN COMPLIANCE WITH:
NFPA #96.
NSF STANDARD #2.
UL STANDARD #1046.
INT. MECH. CODE (IMC).
ULC-S649.



SECTION VIEW - MODEL 5424ND-2
HOOD - #1

FIRE SYSTEM INFORMATION - JOB#6076686

FIRE SYSTEM NO	TAG	TYPE	SIZE	FLOW POINTS	INSTALLATION	
					SYSTEM	LOCATION ON HOOD
1		ANSUL R102	3.0/3.0	14	FIRE CABINET RIGHT	RIGHT, HOOD 1

REVISIONS

DESCRIPTION	DATE

CAPTIVEAIRE

Highwoods Group
www.captiveaire.com

4641 Paragon Park Rd., Raleigh, NC. 27616 PHONE: (919) 875-0420 FAX: 9198750577 EMAIL: reg40@captiveaire.com

CHIPOTLE SEBRING #4727
SEBRING, FL, 33870

DATE: 6/26/2023
DWG.#: 6076686
DRAWN BY: JMB-40
SCALE: 3/4" = 1'-0"
MASTER DRAWING

SHEET NO.
1

EXHAUST FAN INFORMATION - JOB#6076686

FAN UNIT NO	TAG	QTY	FAN UNIT MODEL #	MANUFACTURER	CFM	ESP	RPM	MOTOR ENCL	HP	BHP	PHASE	VOLT	FLA	DISCHARGE VELOCITY	WEIGHT (LBS)	SDNES
1	EF-1	1	DUB5HFA	CAPTIVEAIRE	1900	1.200	1476	TEAD-ECM	1.000	0.5800	1	115	11.6	601 FPM	93	14.2
2	EF-2	1	DR12HFA	CAPTIVEAIRE	150	0.500	1181	TEAD-ECM	0.250	0.0730	1	115	2.9		53	5.1

FAN OPTIONS

FAN UNIT NO	TAG	QTY	DESCRIPTION
1	EF-1	1	GREASE BOX
		1	REMOVE HINGE KIT LABEL FROM THE FAN BASE
		1	MIAMI DADE CERTIFICATION - NDA-1 ALUMINUM UPBLAST
		1	ECM WIRING PACKAGE - PWM SIGNAL FROM ECPM03 PREWIRE (TELCO MOTOR), CCW ROTATION
2	EF-2	1	2 YEAR PARTS WARRANTY
		1	ECM WIRING PACKAGE - EXHAUST - MANUAL DR 0-10VDC REFERENCE SPEED CONTROL -MSC-(TELCO), CCW ROTATION
		1	I 12-BDD DAMPER
		1	MIAMI DADE CERTIFICATION - NDA-1 ALUMINUM DOWNBLAST 10
		1	2 YEAR PARTS WARRANTY

FAN ACCESSORIES

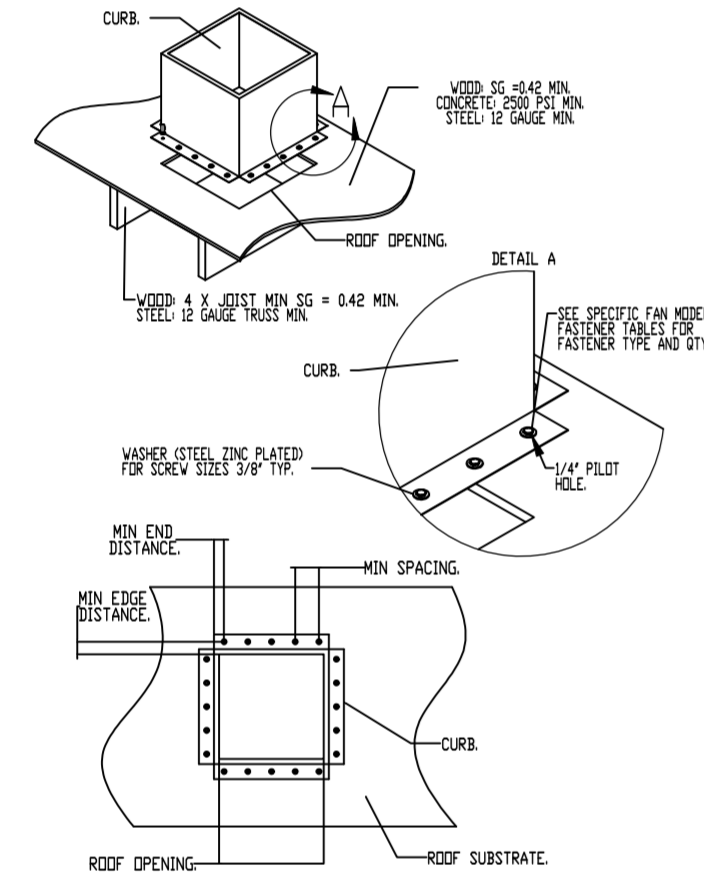
FAN UNIT NO	TAG	EXHAUST				SUPPLY			
		GREASE CUP	GRAVITY DAMPER	WALL MOUNT	SIDE DISCHARGE	GRAVITY DAMPER	MOTORIZED DAMPER	WALL MOUNT	
1	EF-1	YES							
2	EF-2		YES						

CURB ASSEMBLIES

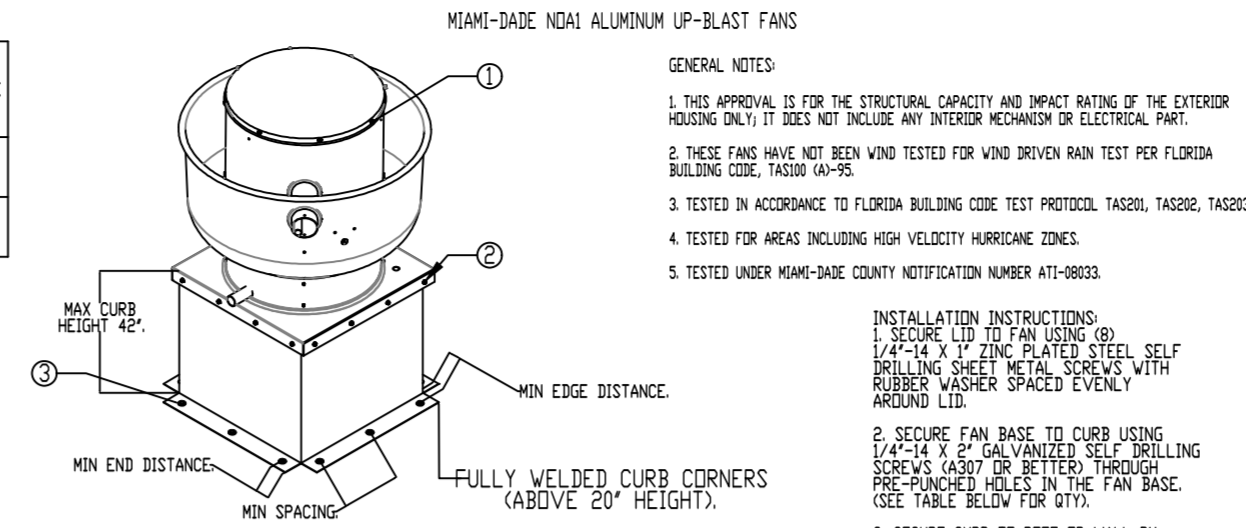
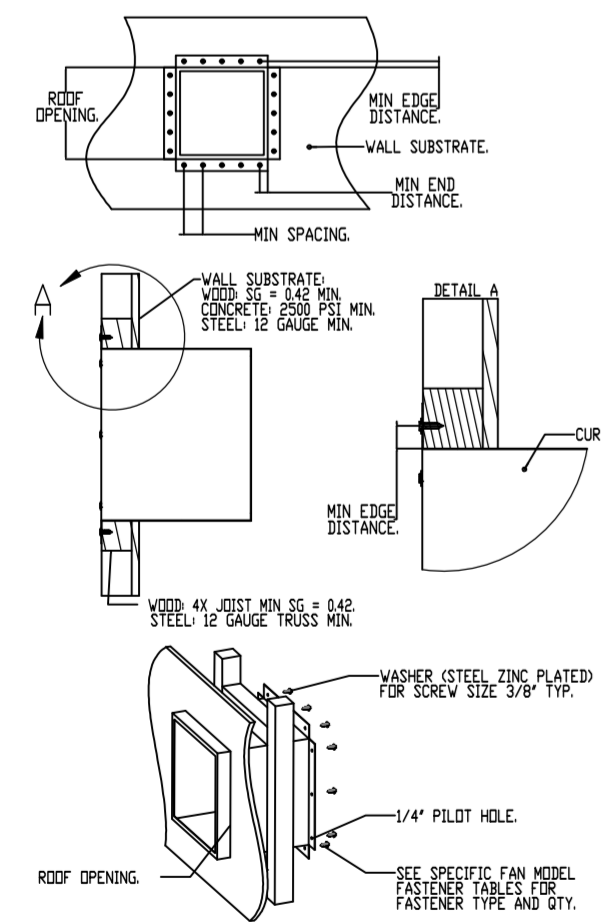
NO	DN FAN	TAG	WEIGHT	ITEM	SIZE
1	# 1	EF-1	66 LBS	CURB	23.000"W X 23.000"L X 26.000"H VENTED 16 GAUGE.
2	# 2	EF-2	51 LBS	CURB	17.500"W X 17.500"L X 26.000"H 16 GAUGE.

FAN #1 DUB5HFA - EXHAUST FAN (EF-1)

MIAMI-DADE COUNTY - CURB ROOF INSTALLATION GUIDE



MIAMI-DADE COUNTY - WALL CURB INSTALLATION GUIDE



MIAMI-DADE NDA1 ALUMINUM UP-BLAST FANS

GENERAL NOTES:
 1. THIS APPROVAL IS FOR THE STRUCTURAL CAPACITY AND IMPACT RATING OF THE EXTERIOR HOUSING ONLY. IT DOES NOT INCLUDE ANY INTERIOR MECHANISM OR ELECTRICAL PART.
 2. THESE FANS HAVE NOT BEEN WIND TESTED FOR WIND DRIVEN RAIN TEST PER FLORIDA BUILDING CODE, TAS201 (A)-95.
 3. TESTED IN ACCORDANCE TO FLORIDA BUILDING CODE TEST PROTOCOL, TAS201, TAS202, TAS203.
 4. TESTED FOR AREAS INCLUDING HIGH VELOCITY HURRICANE ZONES.
 5. TESTED UNDER MIAMI-DADE COUNTY NOTIFICATION NUMBER AT-18033.

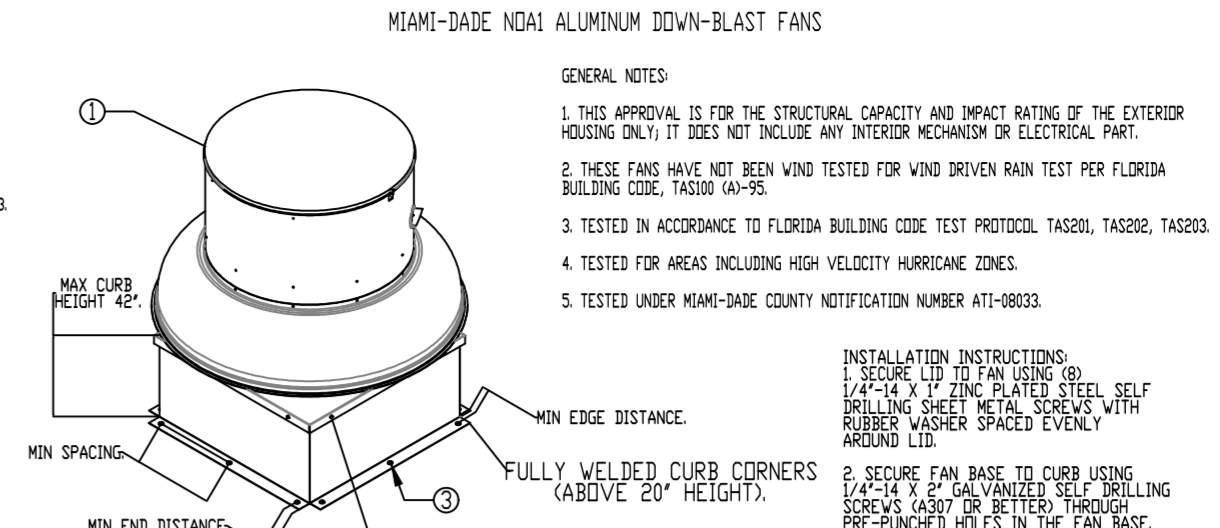
INSTALLATION INSTRUCTIONS:
 1. SECURE LID TO FAN USING (8) 1/4"-14 X 1/2" GALV. PLATED STEEL SELF-DRILLING SHEET METAL SCREWS WITH RUBBER WASHER SPACED EVENLY AROUND LID.
 2. SECURE FAN BASE TO CURB USING (4) 1/4"-14 X 2" GALV. PLATED STEEL SELF-DRILLING SCREWS (AS SHOWN) THROUGH PRE-DRILLED HOLES IN THE FAN BASE. (SEE TABLE BELOW FOR QTY).
 3. SECURE CURB TO ROOF OR WALL BY DRILLING 1/4" DIA. PILOT HOLES IN THE CURB FLANGE AT LOCATIONS SHOWN IN THE DIAGRAM SEE TABLE BELOW FOR FASTENER TYPE. USE TABLE BELOW FOR FASTENER QTY.

CURB MATERIAL:
 20" HIGH & LESS = 20 GA. STEEL.
 ABOVE 20" THRU 42" = 16 GA. STEEL.

DESIGN PRESSURE: +1500 / -1500 PSF.
 LARGE MISSILE IMPACT RESISTANT.

INSTALLATION FASTENER TYPES			
	FAN TO CURB	WOOD (S&G = 0.42 MIN.)	STEEL (12 GAUGE MIN.)
FASTENER	5/16"-18 X 2" SELF-DRILLING SCREW (ELCO DRILL-FLEX OR BETTER)	3/8" DIA. ZINC PLATED LAG BOLT	1/4"-14 DRILL-FLEX SELF-DRILLING SCREW
MINIMUM THREAD PENETRATION	N/A	2-1/2"	12 GAUGE
MINIMUM EDGE DISTANCE	N/A	1-1/2"	3/8"
MINIMUM END DISTANCE	N/A	2-5/8"	3/8"
MINIMUM SPACING	N/A	1-1/2"	3/4"

INSTALLATION FASTENER QTY												
FAN MODEL	CURB TO FAN (ROOF)			CURB TO FAN (WALL)			WOOD (ROOF)			STEEL (ROOF)		
	PER SIDE	TOTAL	PER SIDE	TOTAL	PER SIDE	TOTAL	PER SIDE	TOTAL	PER SIDE	TOTAL		
DUB5	3	12	3	12	4	16	4	16	5	20	5	20



MIAMI-DADE NDA1 ALUMINUM DOWN-BLAST FANS

GENERAL NOTES:
 1. THIS APPROVAL IS FOR THE STRUCTURAL CAPACITY AND IMPACT RATING OF THE EXTERIOR HOUSING ONLY. IT DOES NOT INCLUDE ANY INTERIOR MECHANISM OR ELECTRICAL PART.
 2. THESE FANS HAVE NOT BEEN WIND TESTED FOR WIND DRIVEN RAIN TEST PER FLORIDA BUILDING CODE, TAS201 (A)-95.
 3. TESTED IN ACCORDANCE TO FLORIDA BUILDING CODE TEST PROTOCOL, TAS201, TAS202, TAS203.
 4. TESTED FOR AREAS INCLUDING HIGH VELOCITY HURRICANE ZONES.
 5. TESTED UNDER MIAMI-DADE COUNTY NOTIFICATION NUMBER AT-18033.

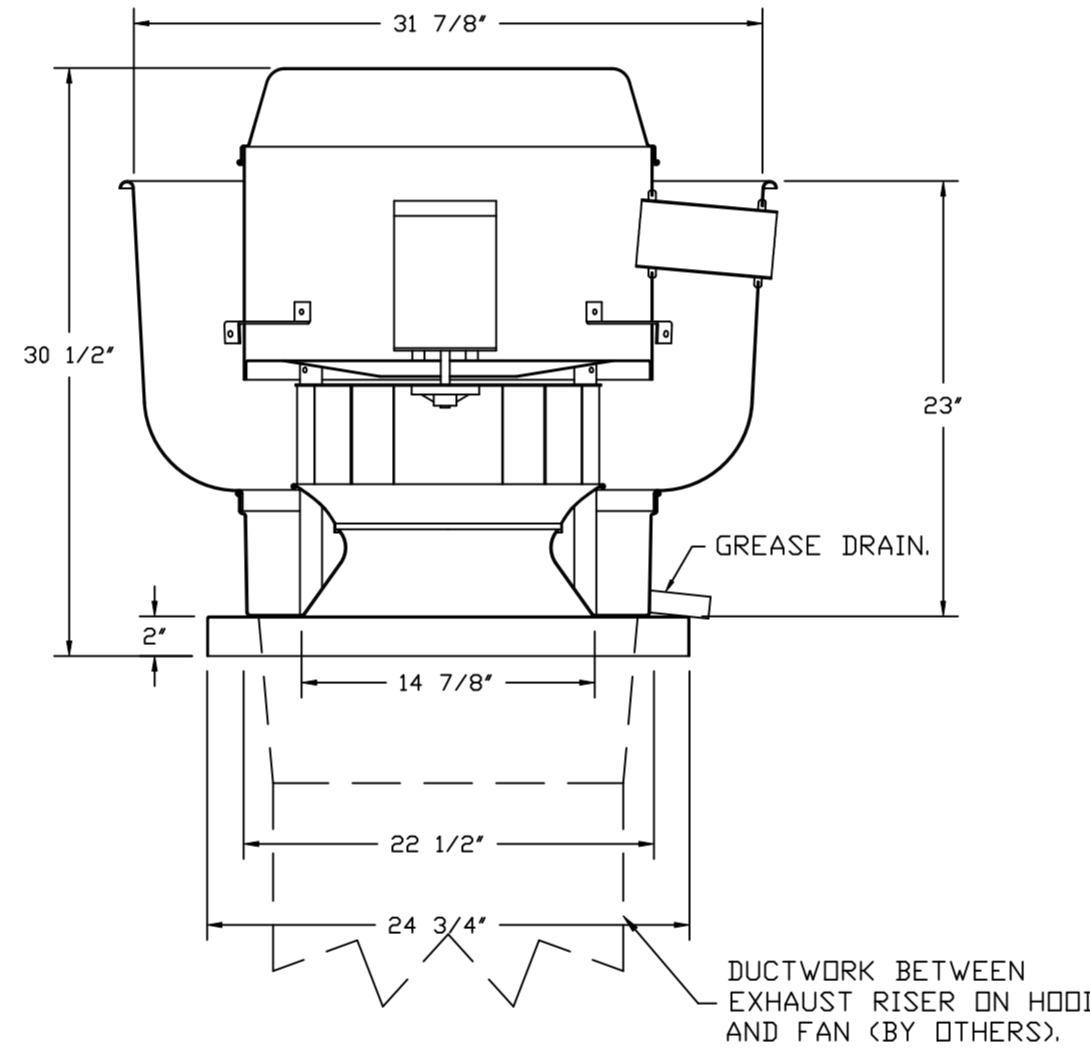
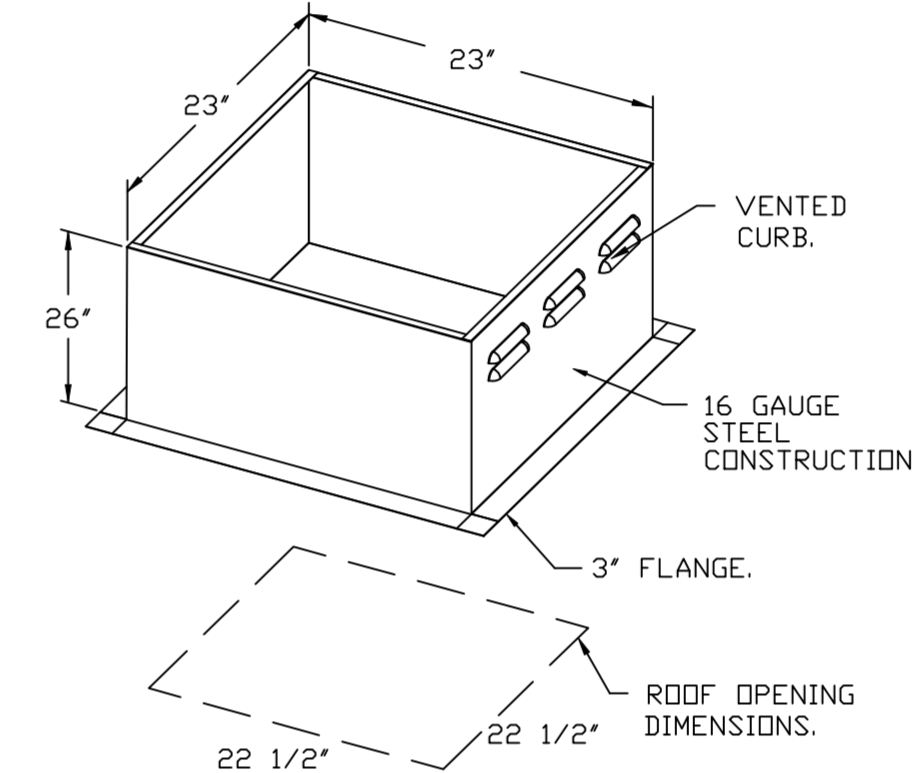
INSTALLATION INSTRUCTIONS:
 1. SECURE LID TO FAN USING (8) 1/4"-14 X 1/2" GALV. PLATED STEEL SELF-DRILLING SHEET METAL SCREWS WITH RUBBER WASHER SPACED EVENLY AROUND LID.
 2. SECURE FAN BASE TO CURB USING (4) 1/4"-14 X 2" GALV. PLATED STEEL SELF-DRILLING SCREWS (AS SHOWN) THROUGH PRE-DRILLED HOLES IN THE FAN BASE. (SEE TABLE BELOW FOR QTY).
 3. SECURE CURB TO ROOF OR WALL BY DRILLING 1/4" DIA. PILOT HOLES IN THE CURB FLANGE AT LOCATIONS SHOWN IN THE DIAGRAM SEE TABLE BELOW FOR FASTENER TYPE. USE TABLE BELOW FOR FASTENER QTY.

CURB MATERIAL:
 20" HIGH & LESS = 20 GA. STEEL.
 ABOVE 20" THRU 42" = 16 GA. STEEL.

DESIGN PRESSURE: +1500 / -1500 PSF.
 LARGE MISSILE IMPACT RESISTANT.

INSTALLATION FASTENER TYPES			
	FAN TO CURB	WOOD (S&G = 0.42 MIN.)	STEEL (12 GAUGE MIN.)
FASTENER	5/16"-18 X 2" SELF-DRILLING SCREW (ELCO DRILL-FLEX OR BETTER)	3/8" DIA. ZINC PLATED LAG BOLT	1/4"-14 DRILL-FLEX SELF-DRILLING SCREW
MINIMUM THREAD PENETRATION	N/A	2-1/2"	12 GAUGE
MINIMUM EDGE DISTANCE	N/A	1-1/2"	3/8"
MINIMUM END DISTANCE	N/A	2-5/8"	3/8"
MINIMUM SPACING	N/A	1-1/2"	3/4"

INSTALLATION FASTENER QTY												
FAN MODEL	CURB TO FAN (ROOF)			CURB TO FAN (WALL)			WOOD (ROOF)			STEEL (ROOF)		
	PER SIDE	TOTAL	PER SIDE	TOTAL	PER SIDE	TOTAL	PER SIDE	TOTAL	PER SIDE	TOTAL		
DUB2	3	12	3	12	3	12	3	12	3	12		



FEATURES:

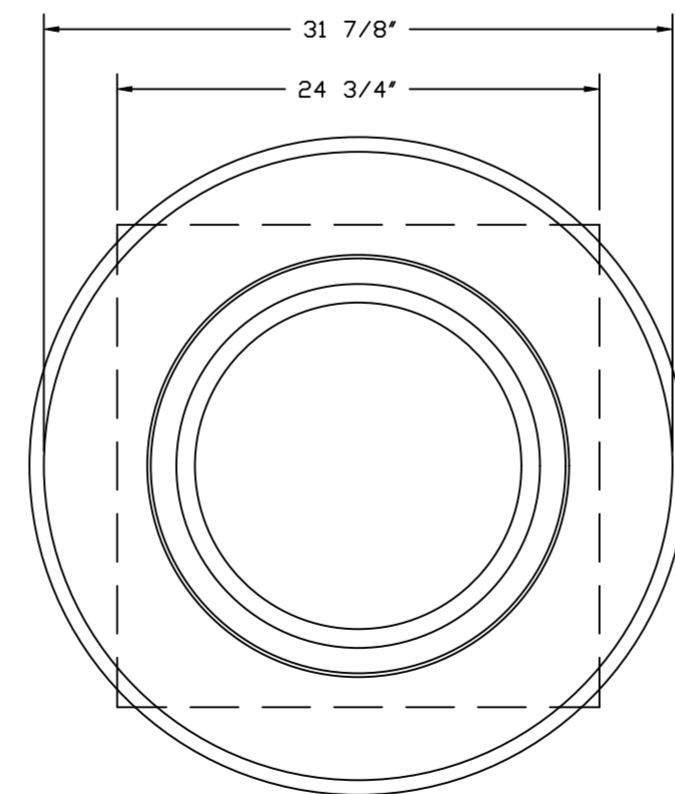
- DIRECT DRIVE CONSTRUCTION (NO BELTS/PULLEYS).
- ROOF MOUNTED FANS.
- RESTAURANT MODEL.
- UL705 AND UL762 AND ULC-S645
- VARIABLE SPEED CONTROL.
- INTERNAL WIRING.
- THERMAL OVERLOAD PROTECTION (SINGLE PHASE).
- HIGH HEAT OPERATION 300°F (149°C).
- GREASE CLASSIFICATION TESTING.
- NEMA 3R SAFETY DISCONNECT SWITCH.

NORMAL TEMPERATURE TEST
 EXHAUST FAN MUST OPERATE CONTINUOUSLY WHILE EXHAUSTING AIR AT 300°F (149°C) UNTIL ALL FAN PARTS HAVE REACHED THERMAL EQUILIBRIUM, AND WITHOUT ANY DETERIORATING EFFECTS TO THE FAN WHICH WOULD CAUSE UNSAFE OPERATION.

ABNORMAL FLARE-UP TEST
 EXHAUST FAN MUST OPERATE CONTINUOUSLY WHILE EXHAUSTING BURNING GREASE VAPORS AT 600°F (316°C) FOR A PERIOD OF 15 MINUTES WITHOUT THE FAN BECOMING DAMAGED TO ANY EXTENT THAT COULD CAUSE AN UNSAFE CONDITION.

OPTIONS

- GREASE BOX.
- REMOVE HINGE KIT LABEL FROM THE FAN BASE.
- MIAMI DADE CERTIFICATION - NDA-1 ALUMINUM UPBLAST.
- ECM WIRING PACKAGE - PWM SIGNAL FROM ECPM03 PREWIRE (TELCO MOTOR), CCW ROTATION.
- 2 YEAR PARTS WARRANTY.



TOP VIEW

REVISIONS	
DESCRIPTION	DATE:

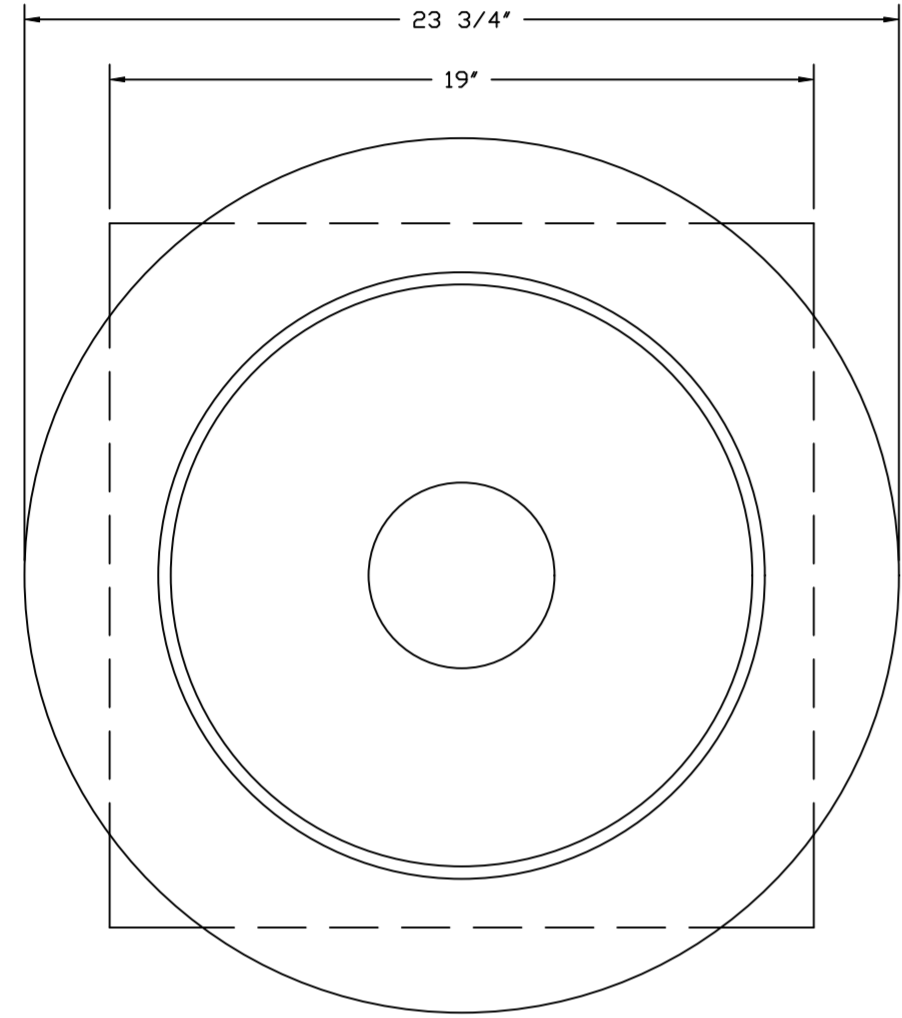
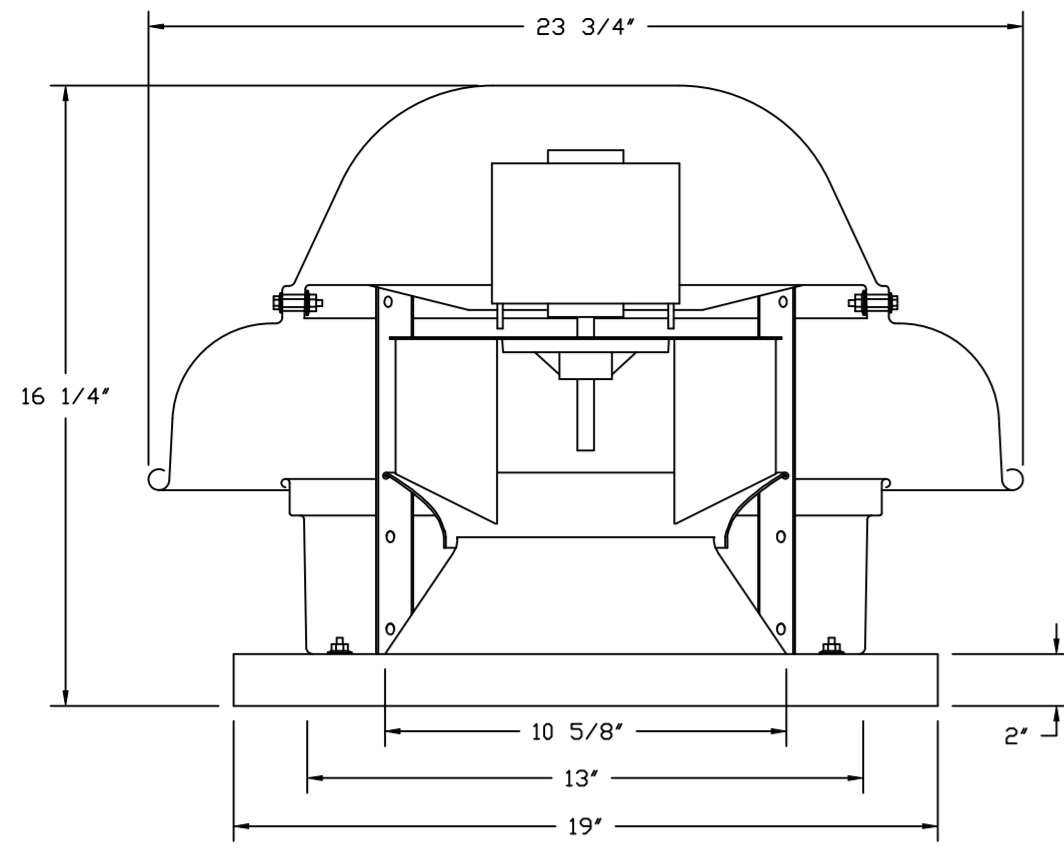
www.captiveaire.com
 Highwoods Group
 4641 Paragon Park Rd., Raleigh, NC, 27616 PHONE: (919) 875-0420 FAX: 9198750577 EMAIL: reg40@captiveaire.com

CHIPOTLE SEBRING #4727
 SEBRING, FL, 33870

DATE: 6/26/2023
 DWG.#: 6076686
 DRAWN BY: JMB-40
 SCALE: 3/4" = 1'-0"
 MASTER DRAWING

SHEET NO.
2

FAN #2 DR12HFA - EXHAUST FAN (CF-22)



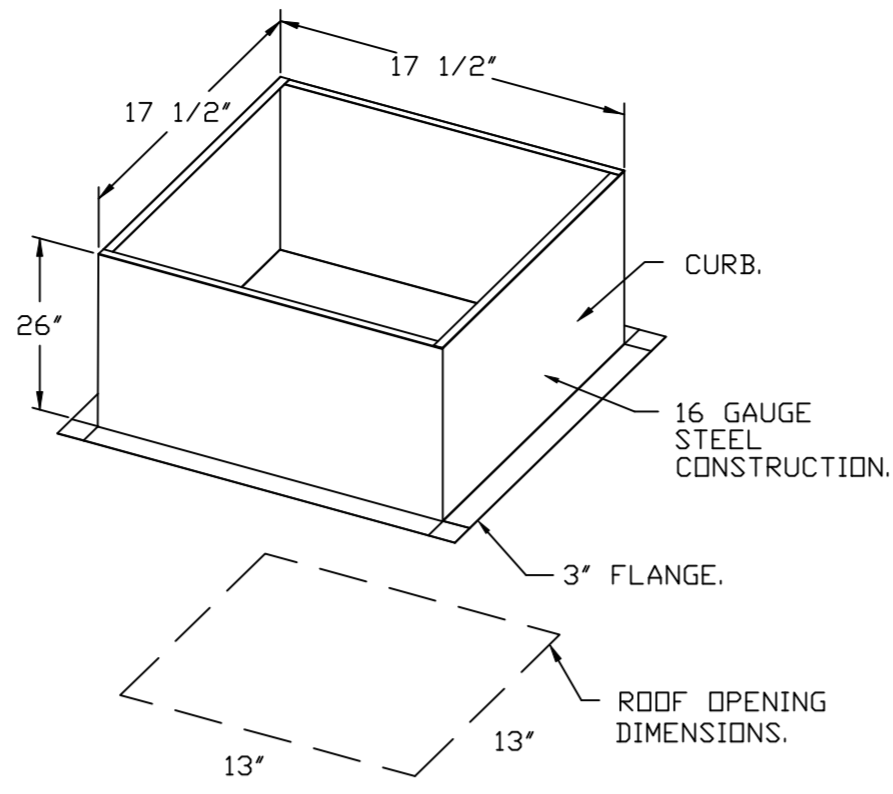
TOP VIEW

FEATURES:

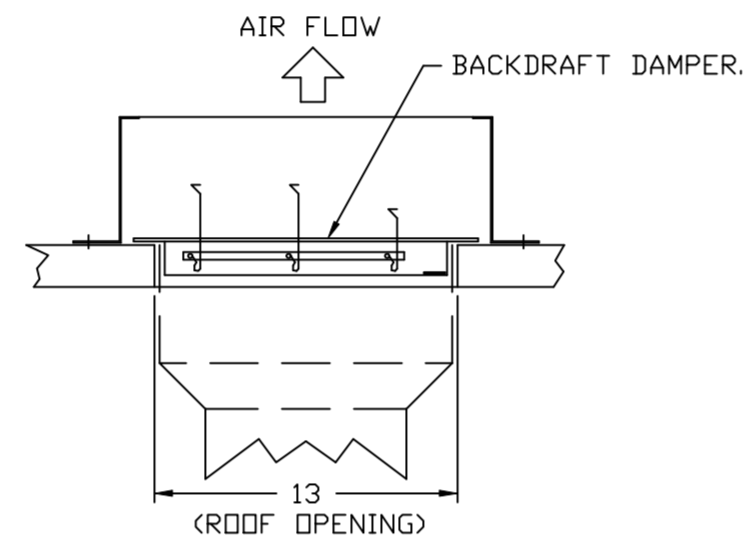
- DIRECT DRIVE CONSTRUCTION (NO BELTS/PULLEYS).
- ROOF MOUNTED FANS.
- UL705.
- SAFETY DISCONNECT.
- STANDARD BIRD SCREEN.
- SPEED CONTROL.
- THERMAL OVERLOAD PROTECTION (SINGLE PHASE).

OPTIONS:

- ECM WIRING PACKAGE - EXHAUST - MANUAL OR 0-10VDC REFERENCE SPEED CONTROL - MSC - (TELCD), CCW ROTATION.
- 1 12-IDD DAMPER.
- MIAMI DADE CERTIFICATION - NDA-1 ALUMINUM DOWNBLAST 10.
- 2 YEAR PARTS WARRANTY.

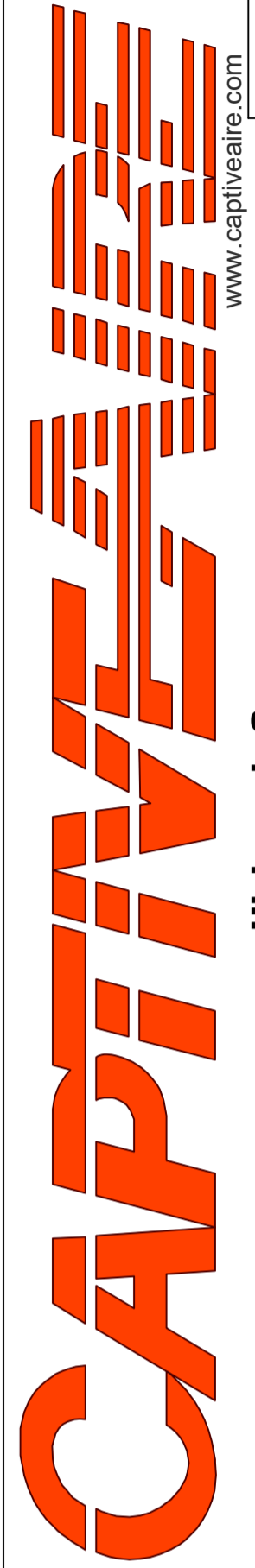
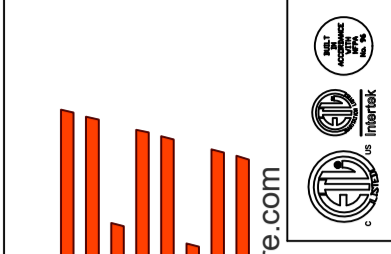


BACKDRAFT DAMPER INSTALLATION



REVISIONS

DESCRIPTION	DATE:



www.captiveire.com
 4641 Paragon Park Rd., Raleigh, NC, 27616 PHONE: (919) 875-0420 FAX: 9198750577 EMAIL: reg40@captiveire.com

CHIPOTLE SEBRING #4727
 SEBRING, FL, 33870

DATE: 6/26/2023

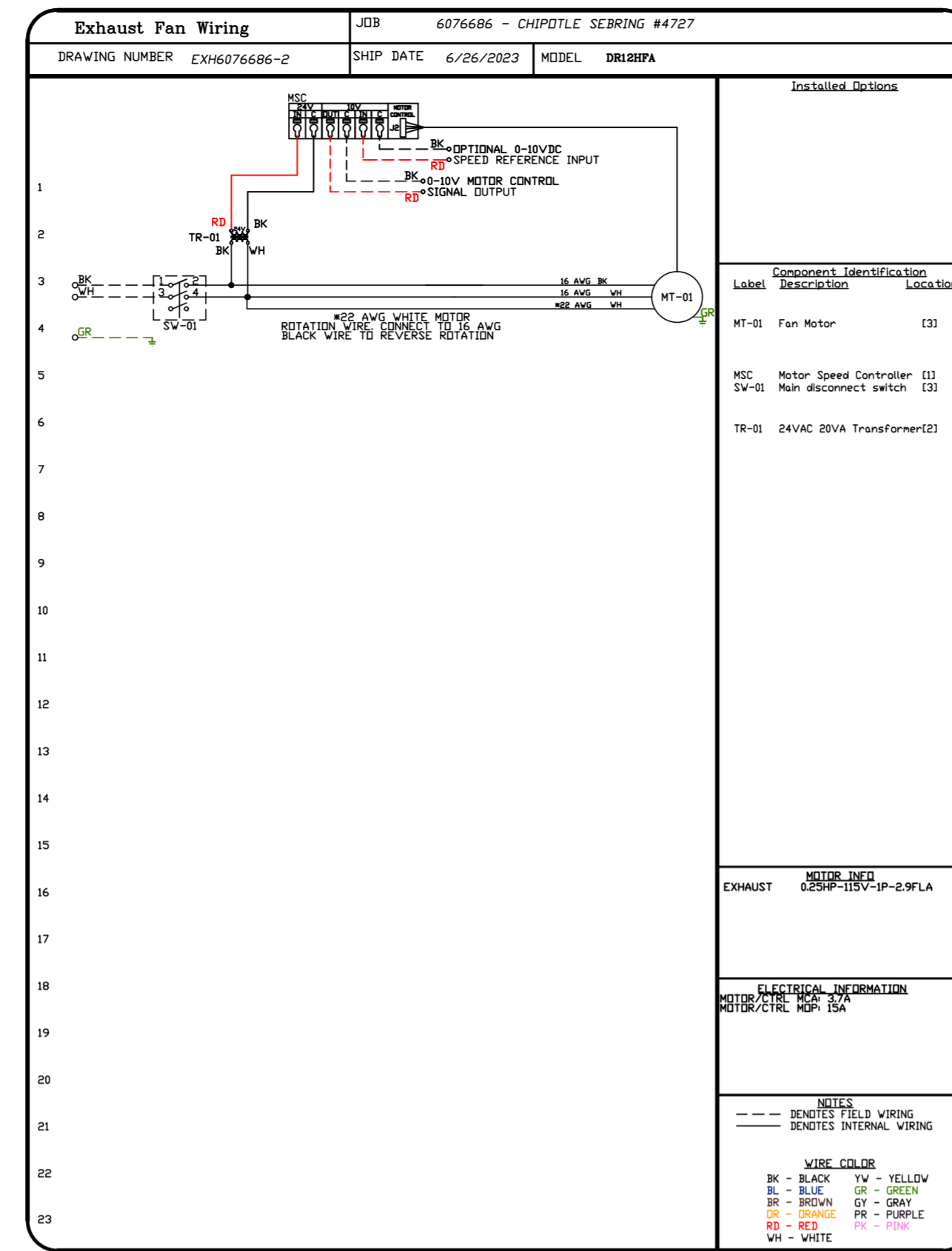
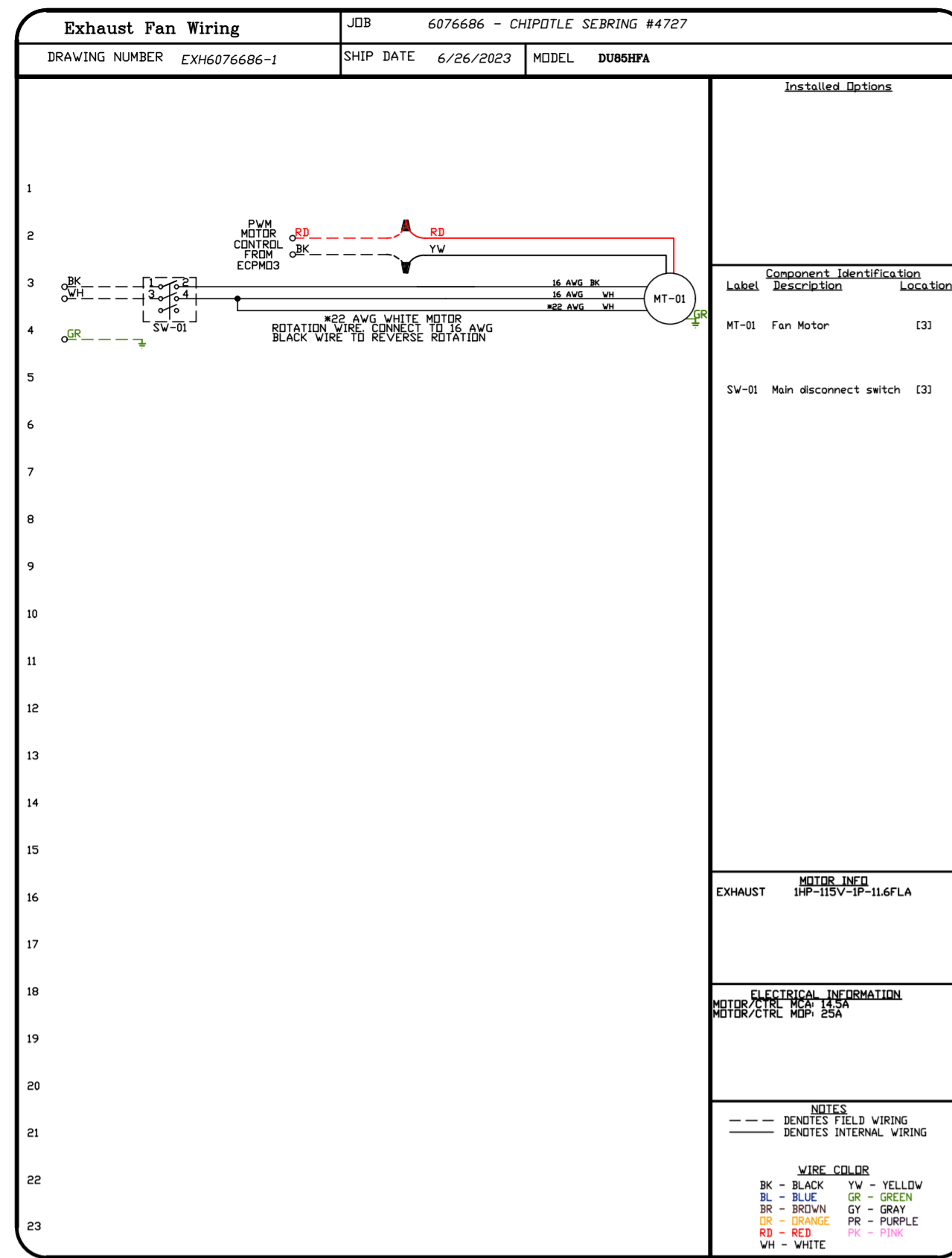
DWG.#: 6076686

DRAWN BY: JMB-40

SCALE: 3/4" = 1'-0"

MASTER DRAWING

SHEET NO. 3



REVISIONS	
DESCRIPTION	DATE:

www.captive.com
www.highwoods.com
4641 Paragon Park Rd., Raleigh, NC, 27616 PHONE: (919) 875-0420 FAX: 9198750577 EMAIL: reg40@captive.com

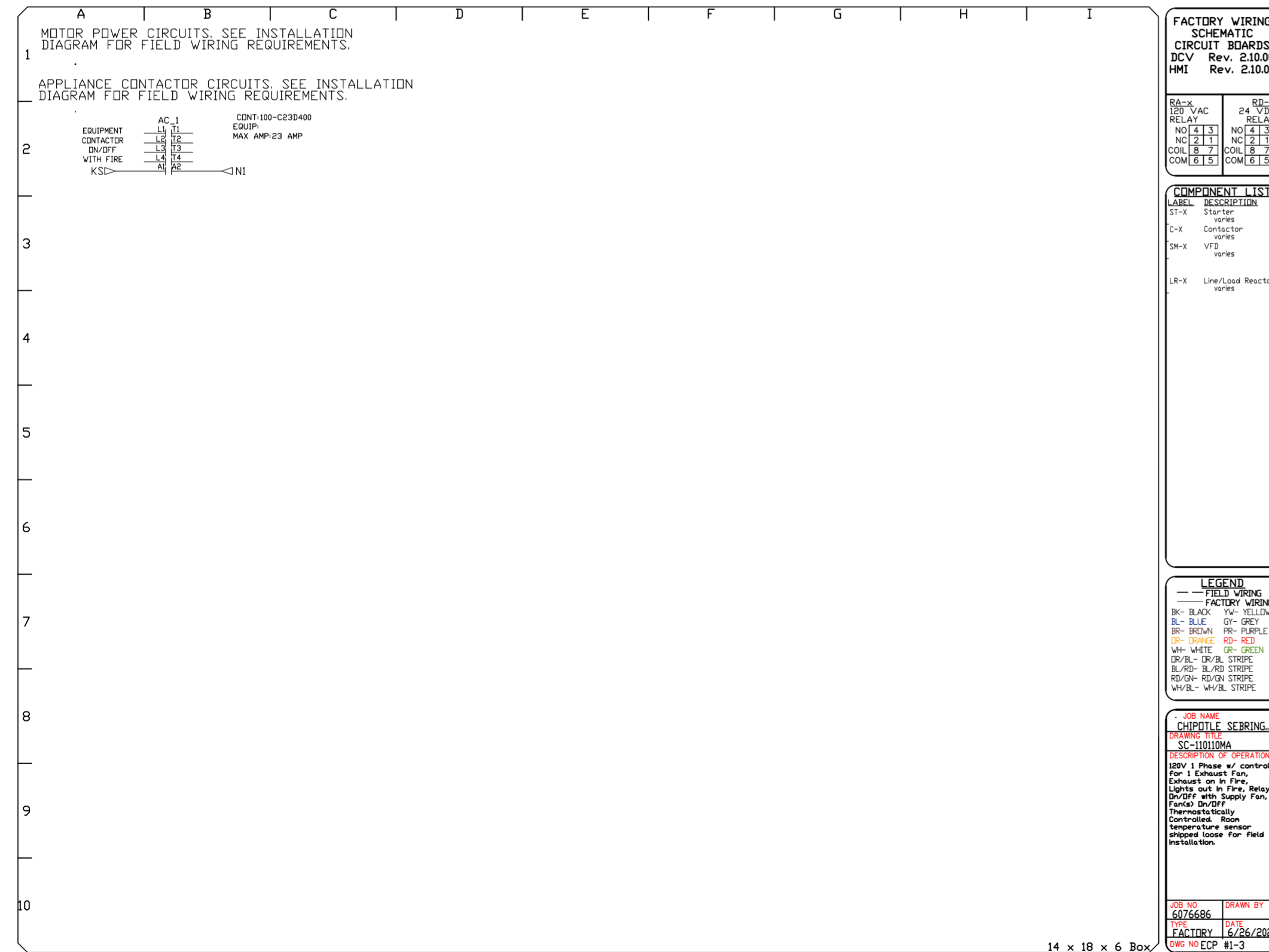
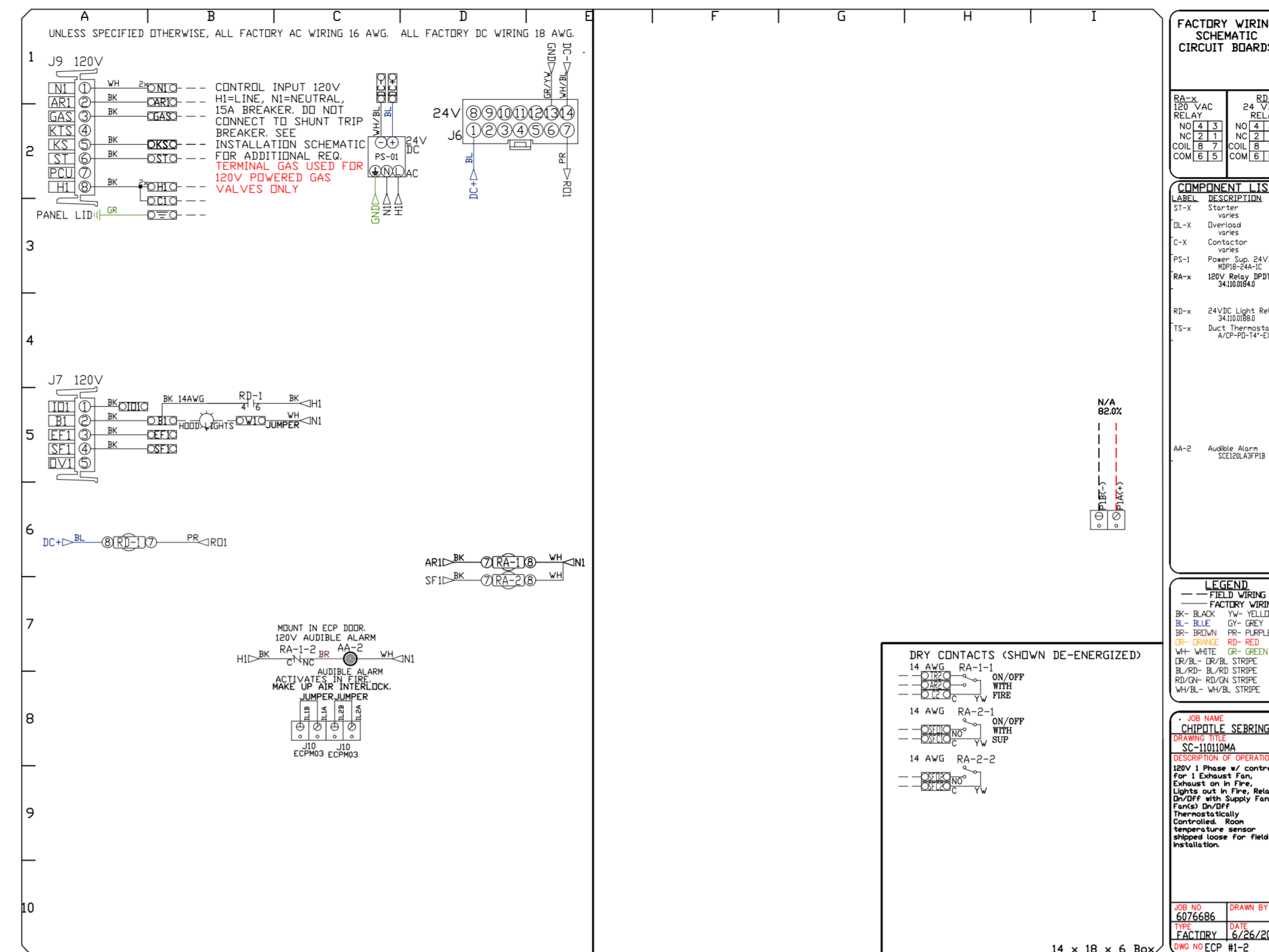
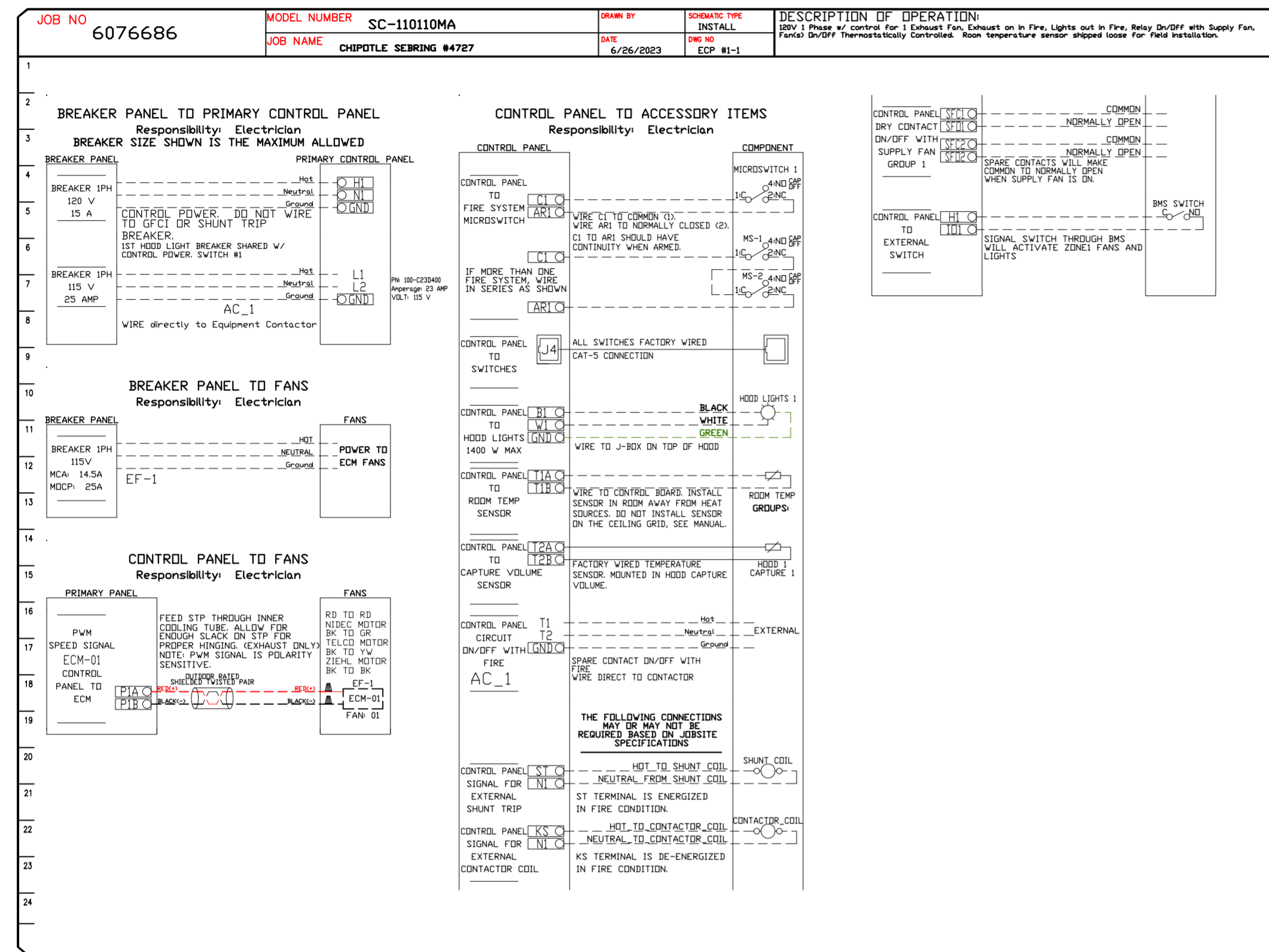
CHIPOTLE SEBRING #4727
SEBRING, FL, 33870

DATE: 6/26/2023
DWG.#: 6076686
DRAWN BY: JMB-40
SCALE: 3/4" = 1'-0"
MASTER DRAWING

SHEET NO.
4

ELECTRICAL PACKAGE - JOB#6076686

NO	TAG	PACKAGE #	LOCATION	SWITCHES		OPTION	FANS CONTROLLED					
				LOCATION	QUANTITY		FAN TAG	TYPE	#	HP	VOLT	FLA
1		SC-110110MA	UTILITY CABINET RIGHT	UTILITY CABINET RIGHT HOOD # 1	1 LIGHT 1 FAN	SMART CONTROLS THERMOSTATIC CONTROL W/ RELAY ON/OFF WITH SUPPLY	EF-1	EXHAUST	1	1.000	115	11.6



REVISIONS

NO	DESCRIPTION	DATE

CHIPOTLE SEBRING #4727
SEBRING, FL, 33870

DATE: 6/26/2023
DWG.#: 6076686
DRAWN BY: JMB-40
SCALE: 3/4" = 1'-0"
MASTER DRAWING

SHEET NO.
 5

CAPTIVE
Highwoods Group
 www.captiveire.com
 4641 Paragon Park Rd., Raleigh, NC, 27616 PHONE: (919) 875-0420 FAX: 9198750577 EMAIL: req40@captiveire.com