

Report By:

National TAB
1329 E. KEMPER ROAD
SUITE 4210
CINCINNATI, OH 45246



Report: TAB REPORT
Function: Test, Adjust, & Balance
Date: 11/22/2024
Completed By: National TAB

PROJECT

11-18-24 CAVA DURHAM, NC (SOUTHPOINT)

8128 RENAISSANCE PARKWAY

DURHAM , NC 27713

Client

CAVA
702 H ST NW
2nd floor
Washington, DC 20001

National TAB

Project: 11-18-24 CAVA DURHAM, NC (SOUTHPOINT)

Table Of Contents

Section	Page #
Summary	3
Issue Data	4
Balance Schedule	14
AHU/RTU	15
FAN - Exhaust	24
FAN - Supply	27
Kitchen Hood Type I	28
GRD Layout	30

Project Summary

The summary below provides a quick understanding of our scope of work and general testing procedures. Enclosed in the report are further details about your building performance including recommendations, asset data, and pictures. Our focus is to work with the trades to remedy any issues or deficiencies during the actual field balancing and not after the balancing has occurred to achieve a positive environment and outcome. The level of success is determined by the availability of the trades, possible parts needed, or time constraints.

FCU's w/ Diffusers

Each of the FCU's were measured at their terminal devices utilizing a flow hood. The sum of these readings is equal to the total flow for that particular unit. The total flow of each FCU was then adjusted to within tolerance of the specified design. Each terminal diffuser was balanced to within tolerance of the engineer's design volume utilizing the provided hand damper located at the takeoff of the main & branch trunk line(s). Any equipment that fell outside of this tolerance is noted throughout the report.

Kitchen Exhaust Hood & Associated Fans

Each kitchen exhaust fan was measured at the hood filter bay utilizing a velocity matrix and a manufacturer's correction factor. Each filter velocity is multiplied by the manufacturer's corrected area. The sum of these readings equals the total flow of the exhaust fans. The total flow of the exhaust was then adjusted to within tolerance of the design flow. Any EF's that fell outside of this tolerance is noted throughout the report.

MUA (Make Up Air Unit) w/ PSP

Total flow for the MAU (Make-up Air Unit) unit was measured by readings taken at the discharge of the hood's perforated supply plenum. Readings taken with a velocity matrix were averaged and multiplied by a manufacturer's corrected area. Adjustments to the fan speed were made in order to bring the unit to within design tolerance. Any MUA's that fell outside of this tolerance is noted throughout the report.

Ceiling Exhaust Fans

The ceiling exhaust fans were measured using a flow hood. If speed adjustment was provided, the fan speed was adjusted to within design tolerance. Any equipment that fell outside of this tolerance is noted throughout the report.

Final Building Tests

After completing the test and balance the final building pressure was measured. It was confirmed that the building pressure fell within acceptable tolerances of $-0.02''$ wc to $+0.02''$ wc and that the pressure measurement coincides with the actual and design net airflow. Any deviations from these standards are noted throughout the report.

The hood capture was tested at the perimeter of the hood and the cook top level with the equipment heat on to ensure satisfactory hood capture and containment.

Issue List

- CEF1 & CEF2 / Speed Controllers
- Cooking Hood / Caulk
- EF1 / Grease Cleanout Door
- EF1, FCU1, FCU2, FCU3 / I.D. Labels
- FCU1 / Exposed Sheet Metal
- FCU1, FCU2, FCU3 / Filters
- FCU1, FCU2, FCU3 / Mechanical Dampers
- FCU2 / Missing Dampers
- FCU3 / Blower Motor

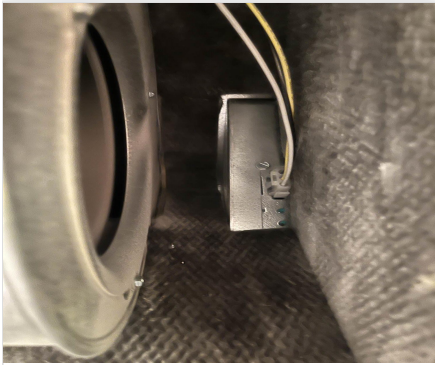


11-18-24 CAVA DURHAM, NC (SOUTHPOINT)

Project Issue Information

Issue Name : CEF1 & CEF2 / Speed Controllers
Description : CEF1 & CEF2 speed controllers are not installed, unable to balance fans to design cfm.
Created By : National TAB **Assigned To :** National TAB - Brianna Biggs
Status : Open
Priority : Urgent **Asset Tag :**
Originated Date : 11/22/2024 - Dale Wheeler - National TAB

Project Issue File Details



11/22/2024



11-18-24 CAVA DURHAM, NC (SOUTHPOINT)

Project Issue Information

Issue Name : Cooking Hood / Caulk
Description : The side of the hood up against the wall needs caulked.
Created By : National TAB **Assigned To :** National TAB - Dale Wheeler
Status : Open
Priority : Low **Asset Tag :**
Originated Date : 11/22/2024 - Dale Wheeler - National TAB

Project Issue File Details



11/22/2024



11-18-24 CAVA DURHAM, NC (SOUTHPOINT)

Project Issue Information

Issue Name : EF1 / Grease Cleanout Door
Description : EF1 grease cleanout door is missing wingnut.
Created By : National TAB **Assigned To :** National TAB - Dale Wheeler
Status : Open
Priority : Medium **Asset Tag :**
Originated Date : 11/22/2024 - Dale Wheeler - National TAB

Project Issue File Details



11/22/2024

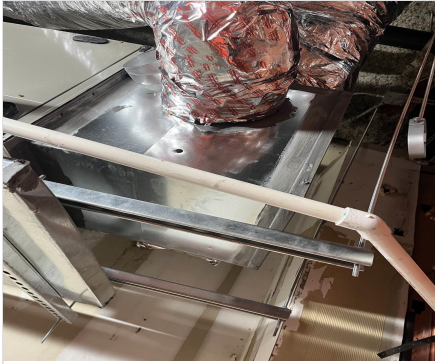


11-18-24 CAVA DURHAM, NC (SOUTHPOINT)

Project Issue Information

Issue Name : EF1, FCU1, FCU2, FCU3 / I.D. Labels
Description : EF1, FCU1, FCU2, FCU3 ID Labels are not installed.
Created By : National TAB **Assigned To :** National TAB - Dale Wheeler
Status : Open
Priority : Low **Asset Tag :**
Originated Date : 11/22/2024 - Dale Wheeler - National TAB

Project Issue File Details



11/22/2024



11-18-24 CAVA DURHAM, NC (SOUTHPOINT)

Project Issue Information

Issue Name : FCU1 / Exposed Sheet Metal
Description : FCU1 has exposed sheet metal and needs to be insulated.
Created By : National TAB **Assigned To :** National TAB - Dale Wheeler
Status : Open
Priority : [Medium](#) **Asset Tag :**
Originated Date : 11/22/2024 - Dale Wheeler - National TAB



11-18-24 CAVA DURHAM, NC (SOUTHPOINT)

Project Issue Information

Issue Name : FCU1, FCU2, FCU3 / Filters
Description : FCU1, FCU2, FCU3 filters are not installed.
Created By : National TAB **Assigned To :** National TAB - Dale Wheeler
Status : Open
Priority : Medium **Asset Tag :**
Originated Date : 11/22/2024 - Dale Wheeler - National TAB

Project Issue File Details



11/22/2024



11-18-24 CAVA DURHAM, NC (SOUTHPOINT)

Project Issue Information

Issue Name : FCU1, FCU2, FCU3 / Mechanical Dampers
Description : FCU1, FCU2, FCU3 mechanical Fresh air dampers are not wired and 100% open. FCU1 had a manual hand damper installed, FCU2 & FCU3 do not, unable to balance fresh air to design cfm for FCU2 & FCU3.
Created By : National TAB **Assigned To :** National TAB - Dale Wheeler
Status : Open
Priority : High **Asset Tag :**
Originated Date : 11/22/2024 - Dale Wheeler - National TAB

Project Issue File Details



11/22/2024



11-18-24 CAVA DURHAM, NC (SOUTHPOINT)

Project Issue Information

Issue Name : FCU2 / Missing Dampers
Description : FCU2 is missing dampers on SGRD6 (Hood ACPSP) unable to balance ACPSP to design cfm. Due to this issue SGRD1 through SGRD5 are low of design cfm. Unit total is within design cfm.
Created By : National TAB **Assigned To :** National TAB - Dale Wheeler
Status : Open
Priority : High **Asset Tag :**
Originated Date : 11/22/2024 - Dale Wheeler - National TAB

Project Issue File Details



11/22/2024

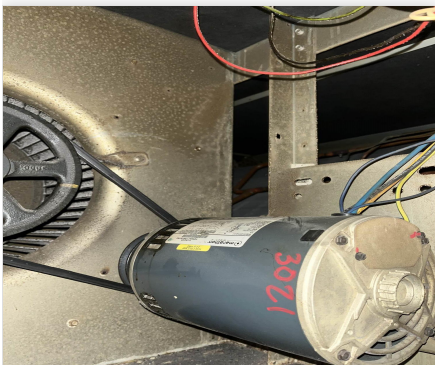


11-18-24 CAVA DURHAM, NC (SOUTHPOINT)

Project Issue Information

Issue Name : FCU3 / Blower Motor
Description : FCU3 blower motor is running at 831 RPM motor should be running at 1725 RPM per tag. Blower motor is either internally wired wrong, or is a bad motor and needs to be replaced. FCU3 is an existing unit and is unable to reach design cfm, all supply dampers were left 100% open to allow for max air flow.
Created By : National TAB **Assigned To :** National TAB - Dale Wheeler
Status : Open
Priority : Urgent **Asset Tag :**
Originated Date : 11/22/2024 - Dale Wheeler - National TAB

Project Issue File Details



11/22/2024

AIR BALANCE SCHEDULE

UNIT	AREA SERVED	HVAC SUPPLY		HVAC RETURN		HVAC OUTDOOR		OA %		HOOD MAKE-UP		HOOD EXHAUST		GENERAL EXH.	
		DESIGN	ACTUAL	DESIGN	ACTUAL	DESIGN	ACTUAL	DESIGN	ACTUAL	DESIGN	ACTUAL	DESIGN	ACTUAL	DESIGN	ACTUAL
FCU-1	KITCHEN	1375	1476	1238	1329	137	147	10.0%	10.0%						
FCU-2	SERVING	2425	2660	2158	2008	267	652	11.0%	24.5%						
FCU-3	DINING	3000	1639	2460	1485	540	154	18.0%	9.4%						
MUA-1	COOKLINE									1712	1609				
KF-1	KITCHEN HD											2117	2198		
CEF-1	RESTROOM													100	165
CEF-2	RESTROOM													100	197
TOTALS		6800	5775	5856	4822	944	953			1712	1609	2117	2198	200	362

NET BUILDING AIRFLOW CALCULATION

TOTALS	DESIGN	ACTUAL
TOTAL OA	2656	2562
TOTAL EXHAUST	2317	2560
NET AIRFLOW	339	2

DOOR TESTED	BUILDING PRESSURE MEASUREMENTS (IN. H ₂ O)
FRONT	0.001
SIDE	0.
REAR	0.001
AVERAGE	0.0007

FINAL CHECKS

- ACTUAL NET AIRFLOW COINCIDES WITH DESIGN: ✓

- MEASURED PRESSURES COINCIDES WITH ACTUAL NET AIRFLOW: ✓

- PRESSURE FALLS WITHIN IMC TOLERANCE OF +/-0.02" W.C. ✓

NOTES:

National TAB

Project: 11-18-24 CAVA DURHAM, NC (SOUTHPOINT)

System/Unit: AHU/RTU



Asset: FCU1

AREA:KITCHEN

Unit Data		
	Design	Actual
MFG	CARRIER	CARRIER
Serial Num	-	1424F03444
Model Num	FJ4DNXD60L	FJ4DNXD60L
Type	FCU	FCU
Configuration	VERTICAL	VERTICAL
Num OA Filters 1	-	N/A
OA Filter Size 1	-	N/A
Num Final Filter 1	-	NO FILTERS INSTALLED
Final Filter Size 1	-	NO FILTERS INSTALLED

Motor Data		
	Design	Actual
Motor MFG	-	N/L
Frame	-	N/L
Horsepower	3/4	0.75
Motor Rpm	-	N/L
Phase	1	1
Rated Voltage	208	208
Rated Amperage	-	6.1

Drive Data	
	Actual
Motor Sheave Size	DD
Motor Bore Size	DD
Motor Sheave SetPt	DD
Fan Sheave Size	DD
Fan Sheave Bore	DD
Belt CL Distance	DD
Num of Belts	DD
Belt Size	DD
Belt Alignment	DD

Test Data		
	Design	Actual
SF CFM	1375	1476
SF RPM	-	DD
RA CFM	1238	1329
OA CFM	137	147
RL Voltage	-	207
RL Amperage	-	4.5
SF Rotation	-	CCW
SF System SetPt	-	HIGH
RA Damper Position	-	NO DAMPER
Min OA Damper Position	-	MANUAL HAND DAMPER
Min OA Damper Type	-	MANUAL HAND DAMPER

Performance Data		
	Design	Actual
MA Plenum SP	-	-0.226"
Fan Suction SP	-	-0.527"
Fan Discharge SP	-	0.56"
Total ESP	0.8"	0.786"
Fan Total SP	-	1.087"

General	
	Actual
Fan Rotation Correct	YES
Unit Filters Clean	NO
Condensate Drain Installed	YES

Completed By: Dale Wheeler on 11/22/2024

Unit Data - PHOTO LOG



11/22/2024

National TAB

Project:11-18-24 CAVA DURHAM, NC (SOUTHPOINT)

AHU/RTU



Diffuser Supply (GRD)

FCU1/KITCHEN

Asset									
Asset Name	Location	Type	Size	DESIGN CFM	AK	CFM(1)	CFM(2)	FINAL CFM	% to design
SGRD1	BOH	A	10"	250	1	338	200	246	98.4
SGRD2	BOH	A	10"	300	1	340	287	327	109.0
SGRD3	OFFICE	A	8"	150	1	326	163	165	110.0
SGRD4	UNFINISHED AREA	11"X11"	10"	275	0.84	312	285	302	109.8
SGRD5	BACK KITCHEN	A	10"	400	1	257	377	436	109.0
Total				1375		1573	1312	1476	107.35%

Completed By: Dale Wheeler on 11/20/2024

National TAB

Project: 11-18-24 CAVA DURHAM, NC (SOUTHPOINT)

System/Unit: AHU/RTU



Asset: FCU-X2

AREA:SERVING

Unit Data		
	Design	Actual
MFG	CARRIER	CARRIER
Serial Num	-	4221U25838
Model Num	EXISTING	40RUQA08A2A6A0A0A0
Type	FCU	FCU
Configuration	VERTICAL	VERTICAL
Num OA Filters 1	-	N/A
OA Filter Size 1	-	N/A
Num Final Filter 1	-	NO FILTERS INSTALLED
Final Filter Size 1	-	NO FILTERS INSTALLED

Motor Data		
	Design	Actual
Motor MFG	-	MARATHON
Frame	-	56Y
Horsepower	-	N/L
Motor Rpm	-	1725
Phase	3	3
Rated Voltage	208	208
Rated Amperage	-	5.2

Drive Data	
	Actual
Motor Sheave Size	VP50
Motor Bore Size	5/8"
Motor Sheave SetPt	3.5 TURNS OUT
Fan Sheave Size	AK84
Fan Sheave Bore	1.0"
Belt CL Distance	10.25"
Num of Belts	1
Belt Size	A39
Belt Alignment	GOOD

Test Data		
	Design	Actual
SF CFM	2425	2660
SF RPM	-	801
RA CFM	2158	1998
OA CFM	267	662
RL Voltage	-	207/208/208
RL Amperage	-	4.4/4.6/4.5
SF Rotation	-	CCW
RA Damper Position	-	NO DAMPER
Min OA Damper Position	-	MECHANICAL DAMPER NOT WIRED
Min OA Damper Type	-	MECHANICAL DAMPER

Performance Data		
	Design	Actual
MA Plenum SP	-	-0.315"
Fan Suction SP	-	-0.561"
Fan Discharge SP	-	0.704"
Total ESP	1.0"	1.019"
Fan Total SP	-	1.265"

General	
	Actual
Fan Rotation Correct	YES
Unit Filters Clean	NO FILTERS ARE INSTALLED
Condensate Drain Installed	YES

Completed By: Dale Wheeler on 11/22/2024

Notes:

- [1] SGRD6 (HOOD ACPSP) DOES NOT HAVE DAMPERS INSTALLED UNABLE TO BALANCE ACPSP TO DESIGN CFM. THIS ISSUE CAUSED SGRD1 THROUGH SGRD5 TO BE LOW OF DESIGN CFM. UNIT TOTAL IS WITHIN DESIGN.
- [2] MECHANICAL OA DAMPER IS NOT WIRED DAMPER IS 100% OPEN. MANUAL DAMPER NOT INSTALLED.
- [3] AMPS HAD TO BE TAKEN WITH BLOWER DOOR OFF.

Written By: Dale Wheeler on 11/22/2024

Unit Data - PHOTO LOG



National TAB

Project:11-18-24 CAVA DURHAM, NC (SOUTHPOINT)

AHU/RTU



Diffuser Supply (GRD)

FCU-X2/SERVING

Asset									
Asset Name	Location	Type	Size	DESIGN CFM	AK	CFM(1)	CFM(2)	FINAL CFM	% to design
SGRD1	SERVING	D	10"	325	1	441	279	238	73.2
SGRD2	SERVING	D	10"	325	1	448	318	271	83.4
SGRD3	SERVING	D	10"	335	1	228	300	258	77.0
SGRD4	SERVING	D	10"	335	1	397	308	263	78.5
SGRD5	SERVING	D	10"	335	1	471	303	258	77.0
SGRD6	KITCHEN HOOD	ACPSP	140X6	771	4.433	1123	1301	1372	178.0
Total				2426		3108	2809	2660	109.65%

National TAB

Project: 11-18-24 CAVA DURHAM, NC (SOUTHPOINT)

System/Unit: AHU/RTU



Asset: FCU-X3

AREA:DINING

Unit Data		
	Design	Actual
MFG	CARRIER	CARRIER
Serial Num	-	4221U25843
Model Num	EXISTING	40RUQA08A2A6A0A0A0
Type	FCU	FCU
Configuration	VERTICAL	VERTICAL
Num OA Filters 1	-	N/A
OA Filter Size 1	-	N/A'
Num Final Filter 1	-	NO FILTERS INSTALLED
Final Filter Size 1	-	NO FILTERS INSTALLED

Motor Data		
	Design	Actual
Motor MFG	-	MARATHON
Frame	-	56Y
Horsepower	-	N/L
Motor Rpm	-	1725
Phase	3	3
Rated Voltage	208	208
Rated Amperage	-	5.2

Drive Data	
	Actual
Motor Sheave Size	VP50
Motor Bore Size	5/8"
Motor Sheave SetPt	1 TURN OUT
Fan Sheave Size	AK84
Fan Sheave Bore	1.0"
Belt CL Distance	10.5"
Num of Belts	1
Belt Size	A39
Belt Alignment	GOOD

Test Data		
	Design	Actual
SF CFM	3000	1639
SF RPM	-	452
RA CFM	2460	1485
OA CFM	540	154
RL Voltage	-	207/208/207
RL Amperage	-	4.2/4.1/4.6
SF Rotation	-	CCW
RA Damper Position	-	NO DAMPERS
Min OA Damper Position	-	100% OPEN
Min OA Damper Type	-	MECHANICAL DAMPER NOT WIRED

Performance Data		
	Design	Actual
MA Plenum SP	-	-0.231"
Fan Suction SP	-	-0.311"
Fan Discharge SP	-	0.133"
Total ESP	1.0"	0.364"
Fan Total SP	-	0.444"

General	
	Actual
Fan Rotation Correct	YES
Unit Filters Clean	NO FILTERS ARE INSTALLED
Condensate Drain Installed	YES

Completed By: Dale Wheeler on 11/22/2024

Notes:

- [1] FCU MOTOR IS RUNNING AT 831RPM MOTOR SHOULD BE RUNNING AT 1725 RPM PER TAG. MOTOR IS EITHER WIRED WRONG INTERNALLY OR IS BAD AND NEEDS REPLACED. FCU3 IS EXISTING AND IS UNABLE TO REACH DESIGN CFM. ALL DAMPERS WERE LEFT 100% OPEN TO ALLOW FOR MAX AIR FLOW.
- [2] MECHANICAL OA DAMPER IS NOT WIRED. MANUAL DAMPER NOT INSTALLED.
- [3] AMPS HAD TO BE TAKEN WITH BLOWER DOOR OFF.

Written By: Dale Wheeler on 11/22/2024

Unit Data - PHOTO LOG



11/22/2024

National TAB

Project:11-18-24 CAVA DURHAM, NC (SOUTHPOINT)

AHU/RTU



Diffuser Supply (GRD)

FCU-X3/DINING

Asset									
Asset Name	Location	Type	Size	DESIGN CFM	AK	CFM(1)	CFM(2)	FINAL CFM	% to design
SGRD1	DINING	E	20X6	305	1	99	99	99	32.5
SGRD2	DINING	E	20X6	200	1	93	93	93	46.5
SGRD3	DINING	E	20X6	305	1	85	85	85	27.9
SGRD4	DINING	E	20X6	200	1	147	147	147	73.5
SGRD5	DINING	E	20X6	305	1	105	105	105	34.4
SGRD6	DINING	E	20X6	200	1	121	121	121	60.5
SGRD7	DINING	E	20X6	230	1	142	142	142	61.7
SGRD8	DINING	E	20X6	280	1	189	189	189	67.5
SGRD9	HALL	B	10"	275	1	177	177	177	64.4
SGRD10	HALL	B	10"	275	1	142	142	142	51.6
SGRD11	RESTROOM	B	6"	75	1	119	119	119	158.7
SGRD12	HALL	B	10"	75	1	113	113	113	150.7
SGRD13	RESTROOM	B	6"	275	1	107	107	107	38.9
Total				3000		1639	1639	1639	54.63%

National TAB

Project: 11-18-24 CAVA DURHAM, NC (SOUTHPOINT)

System/Unit: FAN - Exhaust



Asset: CEF1

AREA:

Unit Data		
	Design	Actual
MFG	n/a	GREENHECK
Model Num	n/a	SP-250-C
Serial Num	-	25068045
Type	-	CEILING MOUNTED
Configuration	-	VERTICAL

Test Data		
	Design	Actual
CFM	100	165
Fan RPM	-	DD / 1000
Fan Rotation	-	CCW
Motor RPM	-	DD / 1000
System SetPt	-	HIGH
RL Voltage	-	120
RL Amperage	-	0.51
Total ESP	-	N/R
Fan Inlet SP	-	N/R
Fan Discharge SP	-	ATM

Motor Data		
	Design	Actual
Motor MFG	-	GREENHECK
Frame	-	N/L
Horsepower	-	1/30
Motor Rpm	-	1000
Phase	-	1
Voltage (rated)	-	115
Amperage (rated)	-	0.56
Service Factor	-	N/L

Completed By: Dale Wheeler on 11/20/2024

Notes:
 [1] SPEED CONTROLLER IS NOT INSTALLED UNABLE TO BALANCE FAN TO DESIGN CFM.

Written By: Dale Wheeler on 11/20/2024

Unit Data - PHOTO LOG



11/22/2024

National TAB

Project: 11-18-24 CAVA DURHAM, NC (SOUTHPOINT)

System/Unit: FAN - Exhaust



Asset: CEF2

AREA:

Unit Data		
	Design	Actual
MFG	n/a	GREENHECK
Model Num	n/a	SP-A250-C
Serial Num	-	25068053
Type	-	CEILING MOUNTED
Configuration	-	VERTICAL

Test Data		
	Design	Actual
CFM	100	197
Fan RPM	-	DD / 1000
Fan Rotation	-	CCW
Motor RPM	-	DD / 1000
System SetPt	-	HIGH
RL Voltage	-	121
RL Amperage	-	0.51
Total ESP	-	N/R
Fan Inlet SP	-	N/R
Fan Discharge SP	-	ATM

Motor Data		
	Design	Actual
Motor MFG	-	GREENHECK
Frame	-	N/L
Horsepower	-	1/30
Motor Rpm	-	1000
Phase	-	1
Voltage (rated)	-	115
Amperage (rated)	-	0.56
Service Factor	-	N/L

Completed By: Dale Wheeler on 11/20/2024

Notes:
[1] SPEED CONTROLLER IS NOT INSTALLED UNABLE TO BALANCE FAN TO DESIGN CFM.

Written By: Dale Wheeler on 11/20/2024

Unit Data - PHOTO LOG



11/22/2024

National TAB

Project: 11-18-24 CAVA DURHAM, NC (SOUTHPOINT)

System/Unit: FAN - Exhaust



Asset: EF1

AREA: KITCHEN HOOD

Unit Data		
	Design	Actual
MFG	CAPTIVEAIRE	CAPTIVEAIRE
Model Num	USBI15DD-RM	USBI15DD-RM
Serial Num	-	6754747
Type	UTILITY	UTILITY
Configuration	VERTICAL	VERTICAL

Motor Data		
	Design	Actual
Motor MFG	-	NEMA
Frame	-	145T
Horsepower	1.5	1.5
Motor Rpm	-	1740
Phase	3	3
Voltage (rated)	208	208
Amperage (rated)	-	4.02
Service Factor	-	1.15

Test Data		
	Design	Actual
CFM	2117	2198
Fan RPM	1555	DD / 1740
Fan Rotation	-	CCW
Motor RPM	-	DD / 1740
System SetPt	-	63.3 HZ.
RL Voltage	-	207/205/205
RL Amperage	-	4.1 AVG.
Total ESP	1.0"	-0.132"
Fan Inlet SP	-	0.132"
Fan Discharge SP	-	ATM

Completed By: Dale Wheeler on 11/20/2024

Unit Data - PHOTO LOG



11/22/2024

National TAB

Project: 11-18-24 CAVA DURHAM, NC (SOUTHPOINT)

System/Unit: FAN - Supply



Asset: MUA1

AREA:COOKLINE

Unit Data		
	Design	Actual
MFG	CAPTIVEAIRE	CAPTIVEAIRE
Model Num	A1-D.250-15D-MPU	A1-D.250-15D-MPU
Serial Num	-	6754747
Type	MUA	MAU
Configuration	VERTICAL	VERTICAL

Test Data		
	Design	Actual
CFM	1712	1609
SF RPM	2162	DD / 1745
Motor RPM	-	DD / 1745
SF System SetPt	-	80.6 HZ.
RL Voltage	-	207/205/206
RL Amperage	-	5.6 AVG.
Total ESP	-	N/R
Fan Discharge SP	-	N/R

Motor Data		
	Design	Actual
Motor MFG	-	NEMA
Frame	-	145T
Horsepower	2	2.0
Motor Rpm	-	1745
Phase	3	3
Voltage (rated)	208	208
Amperage (rated)	-	5.64
Service Factor	-	1.15

General	
	Actual
Fan Rotation Correct	YES

Gas Heat		
	Design	Actual
Heater Operates (y/n)	-	YES
Flame Status (pass/fail)	-	PASS
Inlet Air Temp SetPt	55	55
Discharge Air Temp SetPt	60	60
Air Flow Switch SP Actual	-	0.377"

Completed By: Dale Wheeler on 11/20/2024

Unit Data - PHOTO LOG



11/22/2024

National TAB

Project: 11-18-24 CAVA DURHAM, NC (SOUTHPOINT)

System/Unit: Kitchen Hood Type I



Asset: HD1

AREA:

Unit Data		
	Design	Actual
MFG	CAPTIVEAIRE	CAPTIVEAIRE
Model Num	6030-ND-2-ACPSP-F	6030-ND-2-ACPSP-F
Job / Serial Num	-	6754747
Type	TYPE I CANOPY	TYPE I CANOPY
Hood length	127"	127"
Hood Width	60"	60"
Supply Plenum Type	-	PSP
Supply Plenum Width	14"	14"
Supply Plenum Length	140"	140"

Test Data Exhaust		
	Design	Actual
Filter Type	CAPTRATE SOLO	CAPTRATE SOLO
Filter Size 1	16X20	16X20
Filter Qty 1	7	7
Filter AK factor size 1	2.08	2.08
Filter Total AK Area	14.56	14.56
Filter1 FPM	-	134
Filter2 FPM	-	155
Filter3 FPM	-	179
Filter4 FPM	-	172
Filter5 FPM	-	149
Filter6 FPM	-	141
Filter7 FPM	-	130
Filter Ave FPM(corr)	-	151
CFM	2117	2198

Cooking Equipment	
	Actual
Item 1	OVEN
Item 2	GRIDDLE
Item 3	STOVE
Item 4	FRYER

Test Data Supply		
	Design	Actual
Total AK Area	13.61	13.61
Kv factor (Vel)	0.89	0.89
Num of Readings	-	8
Reading1 FPM	-	154
Reading2 FPM	-	120
Reading3 FPM	-	127
Reading4 FPM	-	112
Reading5 FPM	-	140
Reading6 FPM	-	114
Reading7 FPM	-	129
Reading8 FPM	-	142
Ave FPM(corr)	-	130
CFM	1712	1609

Completed By: Dale Wheeler on 11/20/2024

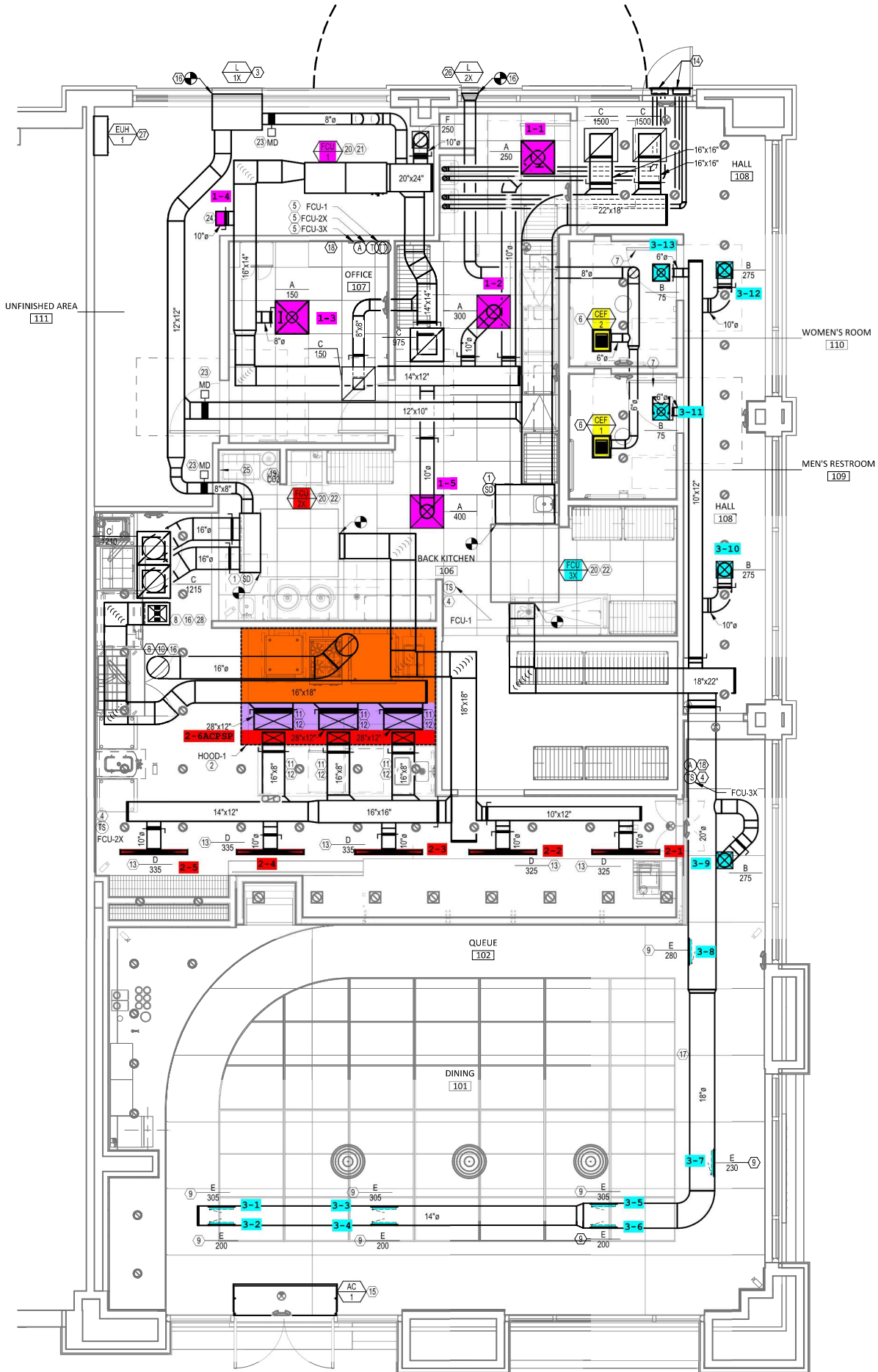
Unit Data - PHOTO LOG



11/22/2024



11/22/2024



UNFINISHED AREA
111

WOMEN'S ROOM
110

MEN'S RESTROOM
109