



**ENTERPRISES  
INCORPORATED**

**212 682-0797 • FAX 212 682-0796 • N.J. 973 621-1655**

**134 WEST 29<sup>TH</sup> STREET • NEW YORK, NEW YORK 10001**

JUNE 2, 2021

**SUBMITTAL:**

**JOB NAME : BURLINGTON**  
**LOCATION : GATEWAY CENTER AT BRONX TERMINAL  
700 EXTERIOR STREET – BLK 2357,  
LOT 45, BLDG A2**  
**ENGINEER : M-ENGINEERING**  
**MANUFACTURER : TASK APPLIED PRODUCTS**  
**REPRESENTATIVE : DNT ENTERPRISES, INC.**

**WATER – COOLED HEAT PUMPS:**

<b>TAG</b>	WSHP-1	WSHP-2	WSHP-3	WSHP-4, WSHP-5 WSHP-6, WSHP-7 WSHP-10, WSHP-11 WSHP-12, WSHP-13 WSHP-14, WSHP-15 WSHP-18
<b>MODEL</b>	TGU084WC	TGU064WC	TGU044WC	TGU154WC
<b>VOLTAGE</b>	460 / 3 / 60	460 / 3 / 60	460 / 3 / 60	460 / 3 / 60
<b>QUANTITY</b>	1	1	1	11

<b>TAG</b>	WSHP-8	WSHP-16	WSHP-17	WSHP-19
<b>MODEL</b>	TGU124WC	TGU024WC	TGU104WC	TGU034WC
<b>VOLTAGE</b>	460 / 3 / 60	460 / 3 / 60	460 / 3 / 60	460 / 3 / 60
<b>QUANTITY</b>	1	1	1	1

**ACCESSORIES:**

THE FACTORY WIRED, PIPED & TESTED UNITS WILL BE PROVIDED WITH:

- 1.) **R-410A “GREEN” REFRIGERANT**
- 2.) **WATER-COOLED HEAT PUMP UNIT**
- 3.) **HIGH EFFICIENCY HERMETIC COMPRESSORS**
- 4.) **UNIT MOUNTED VARIABLE FREQUENCY DRIVE (ALL UNITS EXCEPT WSHP-16 & WSHP-19)**
- 5.) **UNIT MOUNTED DDC MICROPROCESSOR CONTROLLER WITH LCD DISPLAY**
- 6.) **ECM MOTOR (WSHP-16 & WSHP-19 ONLY)**
- 7.) **FACTORY INSTALLED 2-WAY ISOLATION VALVE**
- 8.) **FACTORY PIPED, MOUNTED & WIRED WATERSIDE ECONOMIZER COIL AND VALVE PACKAGE. (INCLUDING A MOTORIZED VALVE, AQUASTAT, AND ITS CONTROLS). (ALL UNITS EXCEPT WSHP-16 & WSHP-19)**

# **DNT** ENTERPRISES INCORPORATED

212 682-0797 • FAX 212 682-0796 • N.J. 973 621-1655

134 WEST 29<sup>TH</sup> STREET • NEW YORK, NEW YORK 10001

---

- 9.) **HOTGAS BYPASS**
- 10.) **HOT WATER COILS**
- 11.) **BRONZ-GLOW COATED COILS**
- 12.) **INTERMEDIATE ACCESS DOORS FOR COIL CLEANING**
- 13.) **2" FILTER RACK WITH MERV-13 FILTERS**
- 14.) **STAINLESS STEEL DRAIN PANS**
- 15.) **EXTERNALLY EQUALIZED TXV**
- 16.) **SIGHT GLASS & FILTER DRIER**
- 17.) **HIGH PRESSURE CUTOUT**
- 18.) **LOW PRESSURE CUTOUT**
- 19.) **5 YEAR COMPRESSOR WARRANTY, ONE YEAR ON PARTS (NO LABOR)**

**BY OTHERS:**     *IF REQUIRED THE CONTRACTOR SHOULD PROVIDE:*

- ⊙ EXTERNAL VIBRATION ISOLATORS / HANGING BRACKETS / FLOOR STANDS (AS REQUIRED)
- ⊙ CONDENSATE PUMP (AS REQUIRED)
- ⊙ DISCONNECT SWITCH
- ⊙ AUXILIARY STAINLESS STEEL DRAIN PAN WITH LEAK DETECTOR
- ⊙ ALL LABOR WARRANTIES

**Burlington Coat Factory**

**PERFORMANCE DATA**

Item Number	1	2	3	4	5	6
<b>Tag Number</b>	<b>WSHP-1 EVAP</b>	<b>WSHP-2 EVAP</b>	<b>WSHP-3 EVAP</b>	<b>WSHP-4 EVAP</b>	<b>WSHP-5 EVAP</b>	<b>WSHP-6 EVAP</b>
<b>Model #</b>	<b>TGU084WC-FCC-HW</b>	<b>TGU064WC-FCC-HW</b>	<b>TGU044WC-FCC-HW</b>	<b>TGU154WC-FCC-HW</b>	<b>TGU154WC-FCC-HW</b>	<b>TGU154WC-FCC-HW</b>
Total Capacity Per Coil (Total)	111271	89939	59075	203133	217261	201860
Sensible capacity Per Coil (Total)	81153	62425	40622	142025	148640	141899
EER	15.6	15.4	14.8	14.3	14.8	14.4
WEIGHT #	1005	950	795	1420	1420	1420
Air Flow Per Coil (Total) (CFM)	3200	2180	1600	5000	5000	5000
FPI	10	12	10	10	10	10
Number of Rows	4	4	4	4	4	4
Entering Air Temp DB	82.2	82.2	80.1	82.1	82.3	81.7
Entering Air Temp WB	67.4	67.4	66.2	67.4	67.5	67.1
Leaving Air Temp DB	58.8	55.8	56.7	55.8	54.9	55.5
Leaving Air Temp WB	56.5	54.0	54.1	54.2	53.3	53.9
Entering Fluid Temp	85.0	85.0	85.0	85.0	85.0	85.0
Leaving Fluid Temp	95.0	95.0	95.0	95.0	95.0	95.0
GPM	26.1	21.4	14.2	48.8	51.9	48.6
Fluid Pressure Drop (Feet of H2O)						
Air Pressure Drop (Inch of H2O)	0.28	0.31	0.15	0.32	0.32	0.32
<b>Tag Number</b>	<b>WSHP-1 FCC</b>	<b>WSHP-2 FCC</b>	<b>WSHP-3 FCC</b>	<b>WSHP-4 FCC</b>	<b>WSHP-5 FCC</b>	<b>WSHP-6 FCC</b>
Total Capacity Per Coil (Total)	104330	71490	49960	150450	173250	167410
Sensible capacity Per Coil (Total)	81530	56930	39560	119020	129840	126430
FPI	9	10	8	8	8	8
Number of Rows	3	3	4	3	3	3
Entering Air Temp DB	82.2	82.2	80.1	82.1	82.3	81.7
Entering Air Temp WB	67.4	67.4	66.2	67.43	67.5	67.13
Leaving Air Temp DB	59.1	58.53	57.68	60.53	58.77	58.78
Leaving Air Temp WB	57.2	57.01	56.19	58.08	56.49	56.53
Entering Fluid Temp	45	45	45	45	45	45
Leaving Fluid Temp	52.96	51.66	52.01	54.11	51.65	51.86
Flow Rate Per Coil (Total) (GPM)	26.1	21.4	14.2	48.8	51.9	48.6
Fluid Pressure Drop (Feet of H2O)	5.43	5.25	5.17	6.43	8.23	7.28
Air Pressure Drop (Inch of H2O)	0.33	0.43	0.42	0.27	0.27	0.27
Item Number				#REF!	1	3
<b>Tag Number</b>	<b>WSHP-1 HW</b>	<b>WSHP-2 HW</b>	<b>WSHP-3 HW</b>	<b>WSHP-4 HW</b>	<b>WSHP-5 HW</b>	<b>WSHP-6 HW</b>
Total Capacity Per Coil (Total)	95960	65370	67710	175030	180980	165840
FPI	9	9	9	9	9	9
Number of Rows	1	1	2	1	1	1
Entering Air Temp DB	52.5	52.5	61.3	52.9	51.8	54.6
Leaving Air Temp DB	80.0	80.0	100.0	85.0	85.0	85.0
Entering Fluid Temp	180	180	180	180	180	180
Leaving Fluid Temp	160	160	160	160	160	160
Flow Rate Per Coil (Total) (GPM)	9.9	6.7	7	18	18.6	17
Fluid Pressure Drop (Feet of H2O)	7.7	16.3	6.4	11.4	12.1	10.3
Air Pressure Drop (Inch of H2O)	0.1	0.1	0.11	0.09	0.09	0.09
Item Number				#REF!	1	3
<b>Tag Number</b>	<b>WSHP-1</b>	<b>WSHP-2</b>	<b>WSHP-3</b>	<b>WSHP-4</b>	<b>WSHP-5</b>	<b>WSHP-6</b>
CFM	3200	2180	1600	5000	5000	5000
E.S.P.	0.5"	0.5"	0.5"	1.0"	1.0"	0.75"
HP	2	1.5	1	5	5	5
VOLTAGE	460/3/60	460/3/60	460/3/60	460/3/60	460/3/60	460/3/60
EVAP FLA	4.3	2.4	1.8	6.2	6.2	6.2
# OF COMPS	2	2	1	2	2	2
COMP RLA	7.8	6.0	7.8	12.6	12.8	12.6
COMP RLA	52	44	52	100	100	100
SYS FLA	19.9	14.4	9.6	31.4	31.8	31.4
SYS MCA	21.9	15.9	11.6	34.6	35.0	34.6
SYS MFS	30	25	20	50	50	50

7	8	9	10	11	12	13
<b>WSHP-7 EVAP</b>	<b>WSHP-8 EVAP</b>	<b>WSHP-10 EVAP</b>	<b>WSHP-11 EVAP</b>	<b>WSHP-12 EVAP</b>	<b>WSHP-13 EVAP</b>	<b>WSHP-14 EVAP</b>
<b>TGU154WC-FCC-HW</b>	<b>TGU124WC-FCC-HW</b>	<b>TGU154WC-FCC-HW</b>	<b>TGU154WC-FCC-HW</b>	<b>TGU154WC-FCC-HW</b>	<b>TGU154WC-FCC-HW</b>	<b>TGU154WC-FCC-HW</b>
203431	148470	203133	203133	204330	204330	229043
142638	105915	142025	142025	142823	142823	168792
14.3	15.4	14.3	14.3	14.3	14.3	14.8
1420	1390	1420	1420	1420	1420	1420
5000	4000	5000	5000	5000	5000	5000
10	12	10	10	10	10	10
4	4	4	4	4	4	4
82.3	81.7	82.1	82.1	82.6	82.6	82.3
67.5	67.1	67.4	67.4	67.7	67.7	67.5
55.9	57.2	55.8	55.9	56.3	56.3	51.2
54.3	55.1	54.2	54.3	54.6	54.6	49.7
85.0	85.0	85.0	85.0	85.0	85.0	85.0
95.0	95.0	95.0	95.0	95.0	95.0	95.0
48.9	34.8	48.8	48.8	49.1	49.1	55.4
0.32	0.44	0.32	0.32	0.32	0.32	0.32
<b>WSHP-7 FCC</b>	<b>WSHP-8 FCC</b>	<b>WSHP-10 FCC</b>	<b>WSHP-11 FCC</b>	<b>WSHP-12 FCC</b>	<b>WSHP-13 FCC</b>	<b>WSHP-14 FCC</b>
171050	123230	150450	170340	173360	173360	177130
128490	97170	119020	127700	129450	129450	130880
8	9	8	8	8	8	8
3	3	3	3	3	3	3
82.3	81.7	82.1	82.1	82.6	82.6	82.3
67.5	67.13	67.43	67.43	67.73	67.73	67.5
59.02	59.69	60.53	58.96	59.15	59.15	58.59
56.73	57.46	58.08	56.7	56.86	56.86	56.34
45	45	45	45	45	45	45
51.97	52.06	54.11	51.95	52.04	52.04	51.37
48.9	34.8	48.8	48.8	49.1	49.1	55.4
7.37	9.33	6.43	7.34	7.42	7.42	9.3
0.27	0.44	0.27	0.27	0.27	0.27	0.27
4	7	5	6	2	4	
<b>WSHP-7 HW</b>	<b>WSHP-8 HW</b>	<b>WSHP-10 HW</b>	<b>WSHP-11 HW</b>	<b>WSHP-12 HW</b>	<b>WSHP-13 HW</b>	<b>WSHP-14 HW</b>
180440	132680	175030	137180	157190	157190	180000
9	9	9	9	9	9	9
1	2	1	1	1	1	1
51.9	54.6	52.9	52.9	50.7	50.7	51.8
85.0	85.0	85.0	85.0	85.0	85.0	85.0
180	180	180	180	180	180	180
160	160	160	160	160	160	160
18.5	13.6	18	18	16.1	16.1	18.6
12.1	14.1	11.4	11.4	9.3	9.3	12.1
0.09	13.6	0.09	0.09	0.14	0.14	0.09
4	7	5	6	2	4	
<b>WSHP-7</b>	<b>WSHP-8</b>	<b>WSHP-10</b>	<b>WSHP-11</b>	<b>WSHP-12</b>	<b>WSHP-13</b>	<b>WSHP-14</b>
5000	4000	5000	5000	5000	5000	5000
0.75"	0.75"	1.0"	1.0"	1.0"	1.0"	1.0"
5	5	5	5	5	5	5
460/3/60	460/3/60	460/3/60	460/3/60	460/3/60	460/3/60	460/3/60
6.2	6.2	6.2	6.2	6.2	6.2	6.2
2	2	2	2	2	2	2
12.6	8.7	12.6	12.6	12.6	12.6	12.6
100	66	100	100	100	100	100
31.4	23.6	31.4	31.4	31.4	31.4	31.4
34.6	25.8	34.6	34.6	34.6	34.6	34.6
50	35	50	50	50	50	50

14	15	16	17	18
<b>WSHP-15 EVAP</b>	<b>WSHP-16 EVAP</b>	<b>WSHP-17 EVAP</b>	<b>WSHP-18 EVAP</b>	<b>WSHP-19 EVAP</b>
<b>TGU154WC-FCC-HW</b>	<b>TGU024WC-FCC-HW</b>	<b>TGU104WC-FCC-HW</b>	<b>TGU154WC-FCC-HW</b>	<b>TGU034WC-FCC-HW</b>
217378	30636	153073	217378	43783
148466	21599	100767	148466	30909
14.3	15.5	14.1	14.3	15.2
1420	580	1370	1420	690
5000	800	3320	5000	1200
10	11	12	10	11
4	4	4	4	4
82.3	80.7	80.5	82.3	80.9
67.5	66.6	66.5	67.5	66.7
54.9	55.8	52.5	54.9	57.1
53.3	54.2	51.0	53.3	54.9
85.0	85.0	85.0	85.0	85.0
95.0	95.0	95.0	95.0	95.0
52.0	7.3	36.9	52.0	10.5
0.32	0.21	0.32	0.32	0.35
<b>WSHP-15 FCC</b>	<b>WSHP-16 FCC</b>	<b>WSHP-17 FCC</b>	<b>WSHP-18 FCC</b>	<b>WSHP-19 FCC</b>
174320	---	130010	174320	---
129710	---	94940	129710	---
8	---	9	8	---
3	---	4	3	---
82.3	---	80.5	82.3	---
67.5	---	66.5	67.5	---
58.8	---	54.58	58.8	---
56.54	---	53.7	56.54	---
45	---	45	45	---
51.68	---	52.02	51.68	---
52	---	36.9	52	---
8.26	---	8.65	8.26	---
0.27	---	0.55	0.27	---
<b>WSHP-15 HW</b>	<b>WSHP-16 HW</b>	<b>A2D3/ACU-3 HW</b>	<b>WSHP-18 HW</b>	<b>WSHP-19 HW</b>
180980	36180	92520	180980	55310
9	9	9	9	9
1	1	2	1	1
51.8	58.6	59.5	51.8	57.8
85.0	100.0	85.0	85.0	100.0
180	180	180	180	180
160	160	160	160	160
18.6	3.27	9.5	18.6	5.7
12.1	4.2	7.2	12.1	15.4
0.09	0.06	0.1	0.09	0.24
<b>WSHP-15</b>	<b>WSHP-16</b>	<b>A2D3/ACU-3</b>	<b>WSHP-18</b>	<b>WSHP-19</b>
5000	800	3320	5000	1200
1.0"	0.5"	1.0"	1.0"	0.5
5	0.5	5	5	0.75
460/3/60	460/3/60	460/3/60	460/3/60	460/3/60
6.2	1.2	6.2	6.2	2.5
2	1	2	2	1
12.6	4.2	10.6	12.6	6.0
100	28	75	100	44
31.4	5.4	27.4	31.4	8.5
34.6	6.4	30.1	34.6	10.0
50	15	45	50	20

Units to have the following features:

- 1) 5 year compressor warranty
- 2) Access panels between all coils
- 3) Factory piped and wired free cooling coils with (2) two way valves
- 4) Hot water preheat coils
- 5) Hot gas bypass all circuits
- 6) Bronze-glow coated coils
- 7) R-410A refrigerant
- 8) MERV 13 filters
- 9) WSHP-16 & 19 to have ECM fan motors. All others, unit mounted VFD's
- 10) Microprocessor with LCD display

Burlington Coat Pipe connection sizes			
	CWS & R	HWS & R	
WSHP-1	1 1/2	1	
WSHP-2	1 1/4	1	
WSHP-3	1	1	
WSHP-4	2	1 1/4	
WSHP-5	2	1 1/4	
WSHP-6	2	1 1/4	
WSHP-7	2	1 1/4	
WSHP-8	1 1/2	1	
WSHP-10	2	1 1/4	
WSHP-11	2	1 1/4	
WSHP-12	2	1 1/4	
WSHP-13	2	1 1/4	
WSHP-14	2	1 1/4	
WSHP-15	2	1 1/4	
WSHP-16	3/4	3/4	
WSHP-17	2	1	
WSHP-18	2	1 1/4	
WSHP-19	3/4	3/4	
All connections to be MPT			

# Water Cooled Dimensions

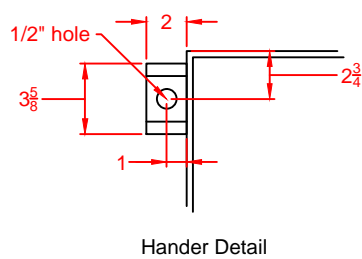


3 Cass Street Keyport NJ 07735 732-739-0377 Fax: 732-739-0144

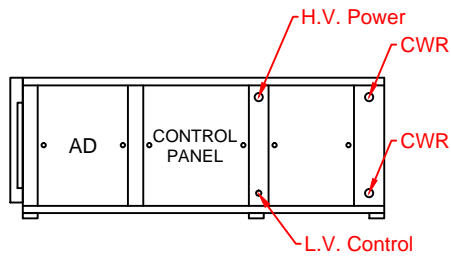
REV. 1 05/17/21

Model	Tons	A	B	C	D	E	F	G	H	J	K	L	M	N	P
TGU02xWC-AA	2	72	44	22	---	---	20 <sup>7</sup> / <sub>8</sub>	22	1 <sup>1</sup> / <sub>8</sub>	2 <sup>3</sup> / <sub>4</sub>	2 <sup>1</sup> / <sub>2</sub>	12 <sup>1</sup> / <sub>2</sub>	13 <sup>3</sup> / <sub>8</sub>	2 <sup>1</sup> / <sub>2</sub>	3 <sup>1</sup> / <sub>2</sub>
TGU03xWC-AA	3	72	44	22	---	---	20 <sup>7</sup> / <sub>8</sub>	22	1 <sup>1</sup> / <sub>8</sub>	2 <sup>3</sup> / <sub>4</sub>	2 <sup>1</sup> / <sub>2</sub>	12 <sup>1</sup> / <sub>2</sub>	13 <sup>3</sup> / <sub>8</sub>	2 <sup>1</sup> / <sub>2</sub>	3 <sup>1</sup> / <sub>2</sub>
TGU04xWC-AA	4	83	54	27	---	---	24 <sup>7</sup> / <sub>8</sub>	32	2 <sup>1</sup> / <sub>8</sub>	2 <sup>3</sup> / <sub>8</sub>	2 <sup>1</sup> / <sub>2</sub>	15 <sup>1</sup> / <sub>8</sub>	13 <sup>3</sup> / <sub>8</sub>	2 <sup>1</sup> / <sub>2</sub>	3 <sup>1</sup> / <sub>8</sub>
TGU05xWC-AA	5	83	54	27	---	---	24 <sup>7</sup> / <sub>8</sub>	32	2 <sup>1</sup> / <sub>8</sub>	2 <sup>3</sup> / <sub>8</sub>	2 <sup>1</sup> / <sub>2</sub>	15 <sup>1</sup> / <sub>8</sub>	13 <sup>3</sup> / <sub>8</sub>	2 <sup>1</sup> / <sub>2</sub>	3 <sup>1</sup> / <sub>8</sub>
TGU06xWC-AA	6	83	54	27	---	---	24 <sup>7</sup> / <sub>8</sub>	32	2 <sup>1</sup> / <sub>8</sub>	2 <sup>3</sup> / <sub>8</sub>	2 <sup>1</sup> / <sub>2</sub>	15 <sup>1</sup> / <sub>8</sub>	13 <sup>3</sup> / <sub>8</sub>	2 <sup>1</sup> / <sub>2</sub>	3 <sup>1</sup> / <sub>8</sub>
TGU08xWC-AA	8	89	74	29 <sup>1</sup> / <sub>2</sub>	---	---	27	46 <sup>7</sup> / <sub>8</sub>	72	2 <sup>7</sup> / <sub>8</sub>	2 <sup>1</sup> / <sub>2</sub>	15 <sup>1</sup> / <sub>8</sub>	13 <sup>3</sup> / <sub>8</sub>	2 <sup>1</sup> / <sub>2</sub>	2 <sup>3</sup> / <sub>4</sub>
TGU10xWC-AA	10	89	74	29 <sup>1</sup> / <sub>2</sub>	---	---	27	46 <sup>7</sup> / <sub>8</sub>	72	2 <sup>7</sup> / <sub>8</sub>	2 <sup>1</sup> / <sub>2</sub>	15 <sup>1</sup> / <sub>8</sub>	13 <sup>3</sup> / <sub>8</sub>	2 <sup>1</sup> / <sub>2</sub>	2 <sup>3</sup> / <sub>4</sub>
TGU12xWC-AA	12	91	82	36	---	---	35 <sup>1</sup> / <sub>4</sub>	50	72	2 <sup>1</sup> / <sub>2</sub>	2 <sup>1</sup> / <sub>2</sub>	17 <sup>5</sup> / <sub>8</sub>	15 <sup>1</sup> / <sub>2</sub>	2 <sup>1</sup> / <sub>2</sub>	6
TGU15xWC-AA	15	91	82	36	---	---	35 <sup>1</sup> / <sub>4</sub>	50	72	2 <sup>1</sup> / <sub>2</sub>	2 <sup>1</sup> / <sub>2</sub>	18 <sup>5</sup> / <sub>8</sub>	17 <sup>7</sup> / <sub>8</sub>	2 <sup>1</sup> / <sub>2</sub>	6

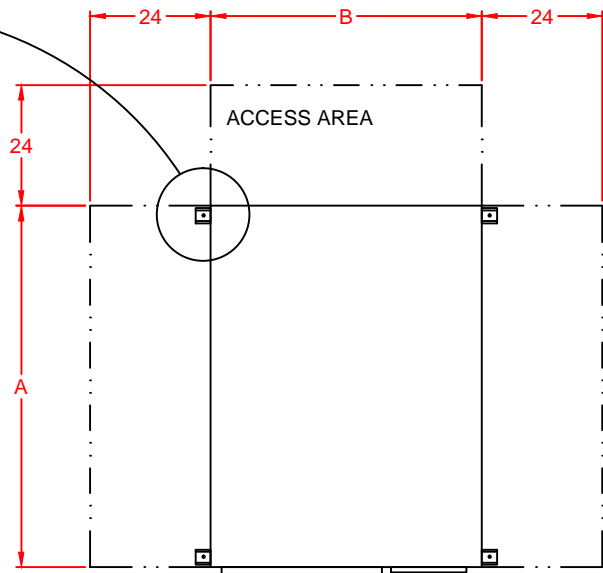
x - designate voltage 1=208/1 3=208/3 4=460/3 7=277/1



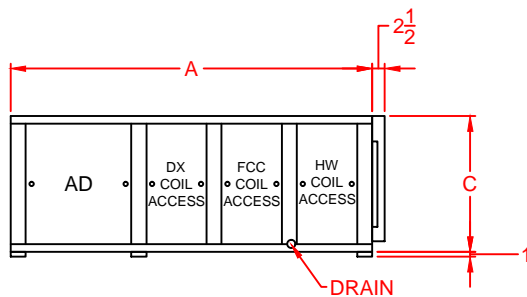
Hander Detail



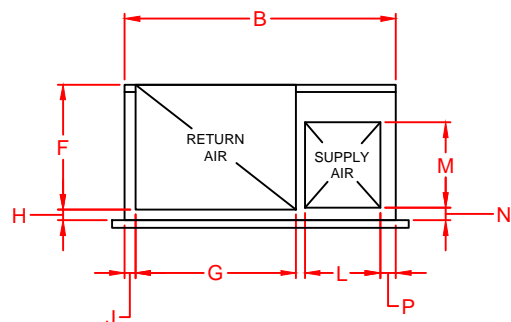
**RIGHT SIDE**



**PLAN VIEW**



**LEFT SIDE**



**FRONT**

Dimensions are approximate and are subject to change without notice. Allow additional clearance for screw heads, latches, hinges, etc.

## SPECIFICATIONS

### Water Cooled Systems:

EACH AIR CONDITIONING UNIT SHALL BE WATER COOLED AND DESIGNED FOR CONSTANT AIR VOLUME OPERATION. MODELS AND CAPACITIES ARE AS INDICATED ON SCHEDULE. UNIT TO BE MANUFACTURED BY **TASK Applied Products, LLC.™**

CASING SHALL BE FABRICATED OF GALVANIZED STEEL PANELS FASTENED TO 16-GUAGE GALVANIZED SUB-FRAMES. PANELS SHALL PROVIDE ACCESS TO ALL COMPONENTS REQUIRING SERVICE. PANELS SHALL BE INTERNALLY LINED WITH 1-1/2" THICK, 1-1/2# DENSITY THERMAL SOUND BARRIER INSULATION.

A 1-1/2" HIGH STAINLESS STEEL DRAIN PAN SHALL BE PROVIDED UNDER EVAPORATOR COILS. DRAIN PAN SHALL HAVE A 1" OUTLET CONNECTION ALLOWING FOR PROPER DRAINAGE OF CONDENSATE.

FAN AND MOTORS FOR 2 & 3-TON UNITS SHALL BE ISOLATED ON RESILIENT TYPE THREE POINT BEARING BRACKETS AND MOUNTED DIRECTLY TO FAN HOUSINGS. MOTORS SHALL BE PSC TYPE. DIRECT DRIVE BLOWERS SHALL HAVE 3 SPEEDS AND FACTORY WIRED FOR THE HIGH-SPEED OPERATION.

ALL OTHER FAN MOTORS SHALL OPERATE AT 1750 RPM AND DRIVE FANS BY MEANS OF V-BELTS AND PULLEY ASSEMBLIES. THE MOTOR SHEAVE OF EACH SHALL BE VARIABLE PITCH TYPE SIZED FOR 10% DEVIATION FROM DESIGN SPEED. BELTS SHALL BE DESIGNED FOR 200% OF OPERATING HORSEPOWER. MOTORS SHALL BE MOUNTED ON ADJUSTABLE BASES FOR CORRECT BELT TENSION AND ALIGNMENT. MOTORS SHALL HAVE HIGH EFFICIENCY ELECTRICAL RATINGS.

HEAVY DUTY, HIGHLY EFFICIENT, OPEN DRIP-PROOF MOTORS SHALL BE NEMA RATED WITH INHERENT OVERLOAD PROTECTION DEVICES. MOTOR BASES SHALL SOLID MOUNTED WITH ADJUSTABLE TAKE-UP BOLTS.

COILS SHALL BE OF NON-FERROUS CONSTRUCTION WITH ALUMINUM PLATE FINS MECHANICALLY BONDED TO SEAMLESS COPPER TUBES. DX COILS SHALL HAVE INDIVIDUAL CIRCUITS FOR EACH COMPRESSOR.

EACH UNIT SHALL HAVE SCROLL COMPRESSORS MOUNTED ON RUBBER-IN-SHEAR VIBRATION ISOLATORS. EACH REFRIGERANT CIRCUIT SHALL HAVE A LOW PRESSURE SWITCH, HIGH PRESSURE SWITCH, SIGHT GLASS INDICATOR, LIQUID LINE FILTER-DRIER, AND ADJUSTABLE EXPANSION VALVE.

WATER COOLED CONDENSERS SHALL BE COAXIAL TYPE RATED FOR 650 PSIG ON WATER AND REFRIGERANT SIDES.

UNITS SHALL BE PROVIDED WITH 2" THICK, CLASS II, MERV 8 MEDIA FILTERS.

OPERATING CONTROL PANEL SHALL BE MOUNTED IN UNIT FACE AND BE COMPLETE WITH 24 VOLT CONTROL TRANSFORMERS WIRED TO MAGNETIC CONTACTORS FOR EACH FAN AND COMPRESSOR. INDIVIDUAL SHORT CIRCUIT FUSING SHALL PROTECT EACH PHASE LEG OF EACH COMPONENT.

POWER SUPPLY TO UNITS SHALL BE SINGLE POINT CONNECTION TO A FACTORY INSTALLED TERMINAL BLOCK. COLOR CODED LOW VOLTAGE CONTROL WIRING SHALL BE BROUGHT TO A TERMINAL STRIP AND CLEARLY MARKED FOR FIELD CONNECTION OF A REMOTE CONTROL DEVICE.

UNITS SHALL BE PROVIDED WITH MANUFACTURERS STANDARD ONE YEAR LIMITED WARRANTY AND A FOUR YEAR EXTENDED COMPRESSOR WARRANTY.