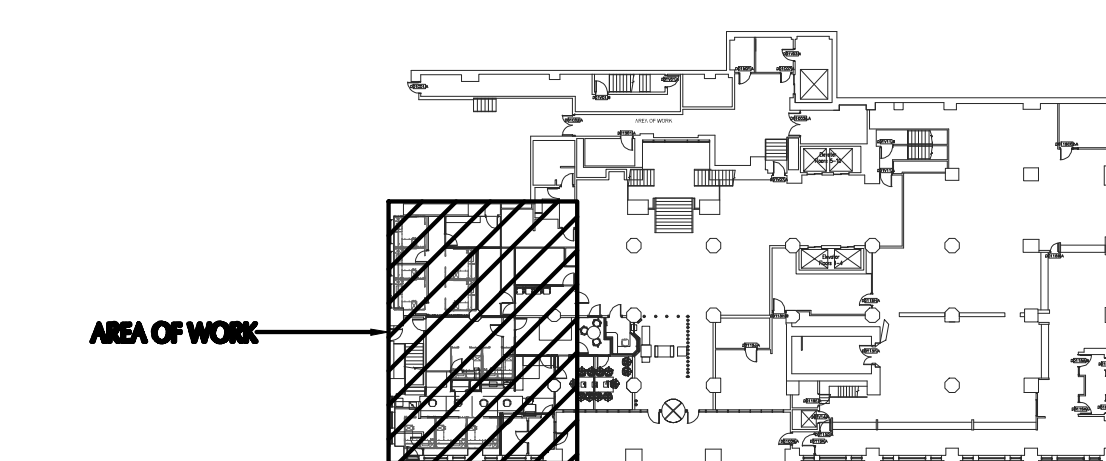


- DRAWING NOTES**
DRAWING H101
- 1 DEMO EXISTING DUCTWORK BACK TO MAIN AND CAP. REMOVE DIFFUSERS, BRANCH DUCTS, AND DUCT HANGERS.
 - 2 DEMO EXISTING RETURN GRILLE.
 - 3 DEMO EXISTING VAV BOX AND DUCTWORK BACK TO MAIN. DISCONNECT AND REMOVE ALL UTILITIES.
 - 4 DEMO EXISTING EXHAUST DIFFUSER AND DUCT BACK TO LOCATION SHOWN.
 - 5 DEMO EXISTING THERMOSTAT AND WIRING TO ASSOCIATED UNIT.
- GENERAL NOTES**
APPLIES TO ALL DRAWINGS OF THIS TRADE
- A FOR KEY PLAN AND DRAWING INDEX SEE DRAWING ARCHITECTURAL DRAWING.
 - B FIELD VERIFY ALL SIZES, DIMENSIONS, LOCATIONS, ETC PRIOR TO INITIATION OF CONSTRUCTION



PLAN - DEMOLITION - FIRST FLOOR
SCALE: 1/4" = 1'-0"
NORTH

KEY PLAN

720 E Pete Rose Way, Suite 140
Cincinnati, OH 45202
T 513.241.4474 F 513.241.0081
thinkchamplin.com

THINK CREATE REALIZE

THERMALTECH ENGINEERING
FACILITY AND UTILITY SYSTEMS
ANALYSIS/DESIGN/CONSTRUCTION
513-561-2271 • WWW.THERMALTECH.COM
CINCINNATI, OH • ELIZABETH, PA • FORT WORTH, TX • LANCASTER, PA
RICHMOND, VA • GRAND RAPIDS, MI • MEMPHIS, TN

TPC SHERIFF REENTRY EXPANSION 2024

138 EAST COURT STREET,
CINCINNATI, OH 45202
ITB 082-24

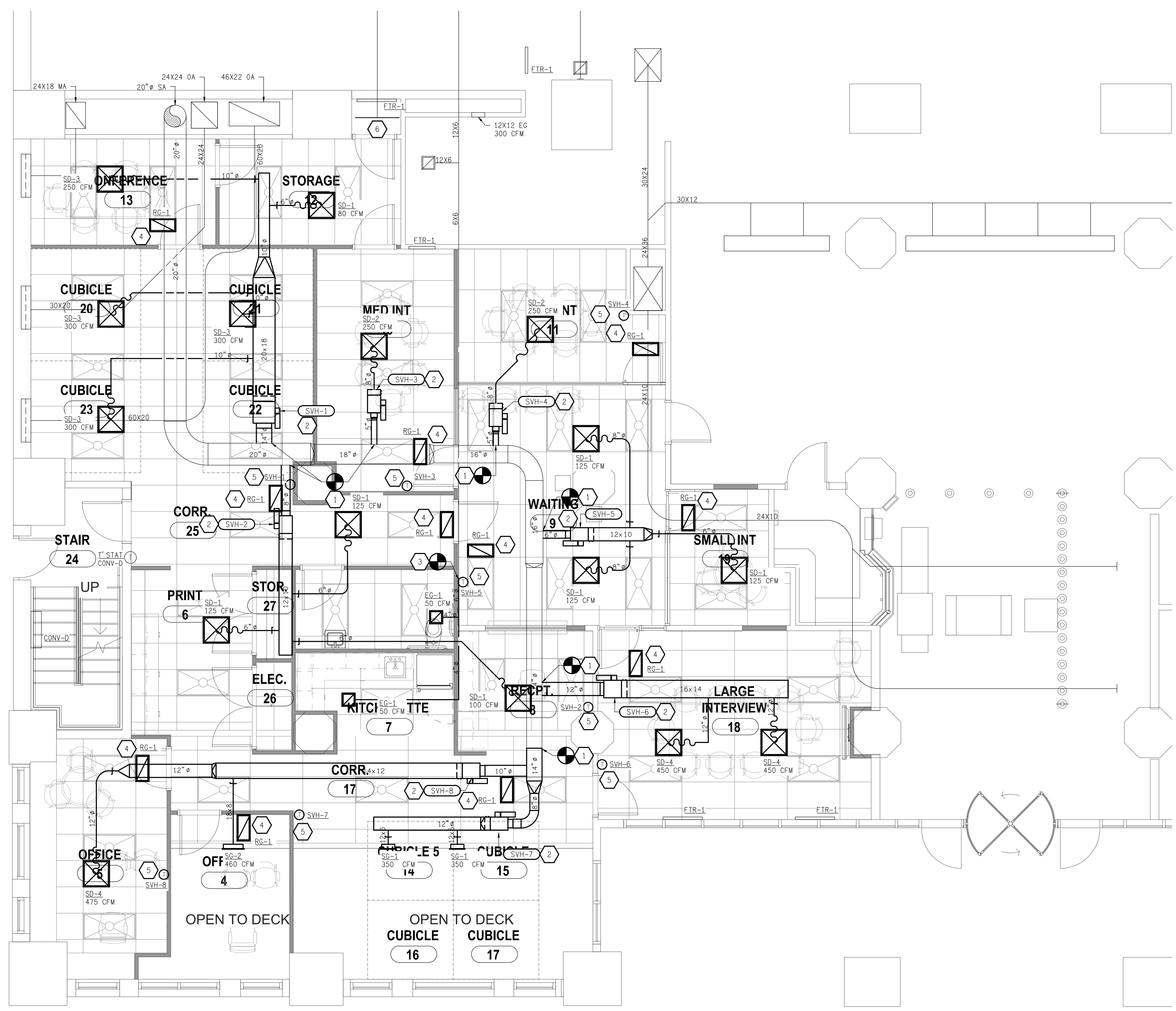
ISSUANCES

| DATE | NO. | ITEM |
|----------|-----|-------------------|
| 04/25/24 | A | ISSUED FOR REVIEW |
| 08/14/24 | B | ISSUED FOR REVIEW |
| 09/16/24 | C | ISSUED FOR BID |

| | |
|--------------------------|---|
| DRAWN BY TAB | PRELIMINARY DRAWING ONLY |
| CHECKED BY TTC | |
| CLIENT NO. | |
| PROJECT NO. 13600.097 | |

NOT TO BE USED FOR CONSTRUCTION

| |
|--|
| DRAWING TITLE HVAC DEMOLITION PLAN FIRST FLOOR |
| SHEET NO. H101 |

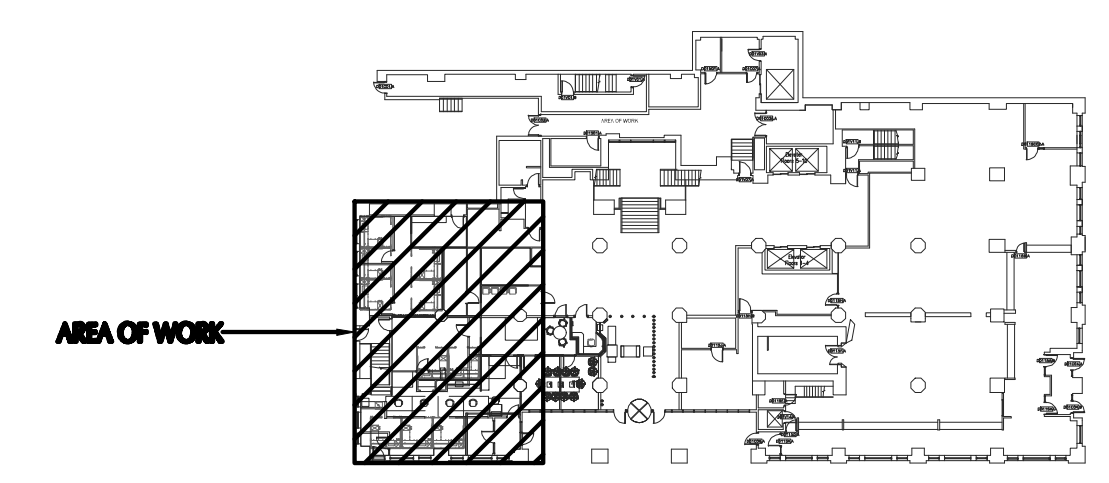


DRAWING NOTES
DRAWING H201

1. CONNECT TO EXISTING SUPPLY AIR MAIN AT THIS LOCATION. PROVIDE NEW INSULATION AT ALL DISTURBED LOCATIONS, PATCH ALL MISSING AND DAMAGED INSULATION.
2. PROVIDE NEW TERMINAL UNIT WITH HOT WATER REHEAT COIL AS SCHEDULED. PROVIDE ALL REQUIRED UNIT SUPPORTS, ACCESSORIES, AND CONTROL WIRING TO THERMOSTATS.
3. CONNECT TO EXISTING EXHAUST DUCT AT THIS LOCATION AND EXTEND TO NEW EXHAUST GRILLE. PROVIDE 90 DEG ELBOW WITH 1" INSULATION BEHIND GRILLE FOR SOUND DEADENING.
4. PROVIDE NEW RETURN AIR GRILLE AT THIS LOCATION. PROVIDE 90 DEG ELBOW WITH 1" INSULATION BEHIND GRILLE FOR SOUND DEADENING.
5. PROVIDE NEW THERMOSTAT AT THIS LOCATION AND WIRE TO ASSOCIATED UNIT.
6. UNIT MAIN RETURN AIR INLET, ENSURE RETURN AIR HAS OPEN PATH TO THIS OPENING FROM EVERY ROOM. PROVIDE 16" X 8" FRAMED OPENINGS IN ANY FULL HEIGHT WALLS TO PROVIDE FOR AN UNOBSTRUCTED PATH.

GENERAL NOTES
APPLIES TO ALL DRAWINGS OF THIS TRADE

- A. FOR KEY PLAN AND DRAWING INDEX SEE DRAWING ARCHITECTURAL DRAWING.
- B. FIELD VERIFY ALL SIZES, DIMENSIONS, LOCATIONS, ETC PRIOR TO INITIATION OF CONSTRUCTION.
- C. PROVIDE HAND DAMPERS IN NEW SUPPLY DUCTWORK FOR NEW DIFFUSERS.
- D. SUPPORT ALL EQUIPMENT FROM BUILDING STRUCTURE.
- E. PROVIDE NEW AIR BALANCE FOR ALL HVAC SYSTEMS IN PROJECT AREA. MEASURE ALL DEVICES AT DESIGN FLOW.



PLAN - NEW WORK - FIRST FLOOR
SCALE: 1/4" = 1'-0"

KEY PLAN

720 E Pete Rose Way, Suite 140
Cincinnati, OH 45202
T 513.241.4474 F 513.241.0081
thinkchamplin.com

THINK CREATE REALIZE

THERMALTECH ENGINEERING
FACILITY AND UTILITY SYSTEMS
ANALYSIS/DESIGN/CONSTRUCTION
513-561-2271 • WWW.THERMALTECH.COM
CINCINNATI, OH • ELIZABETHTOWN, PA • FORT WORTH, TX • LANCASTER, PA
RICHMOND, IN • GRAND RAPIDS, MI • MEMPHIS, TN

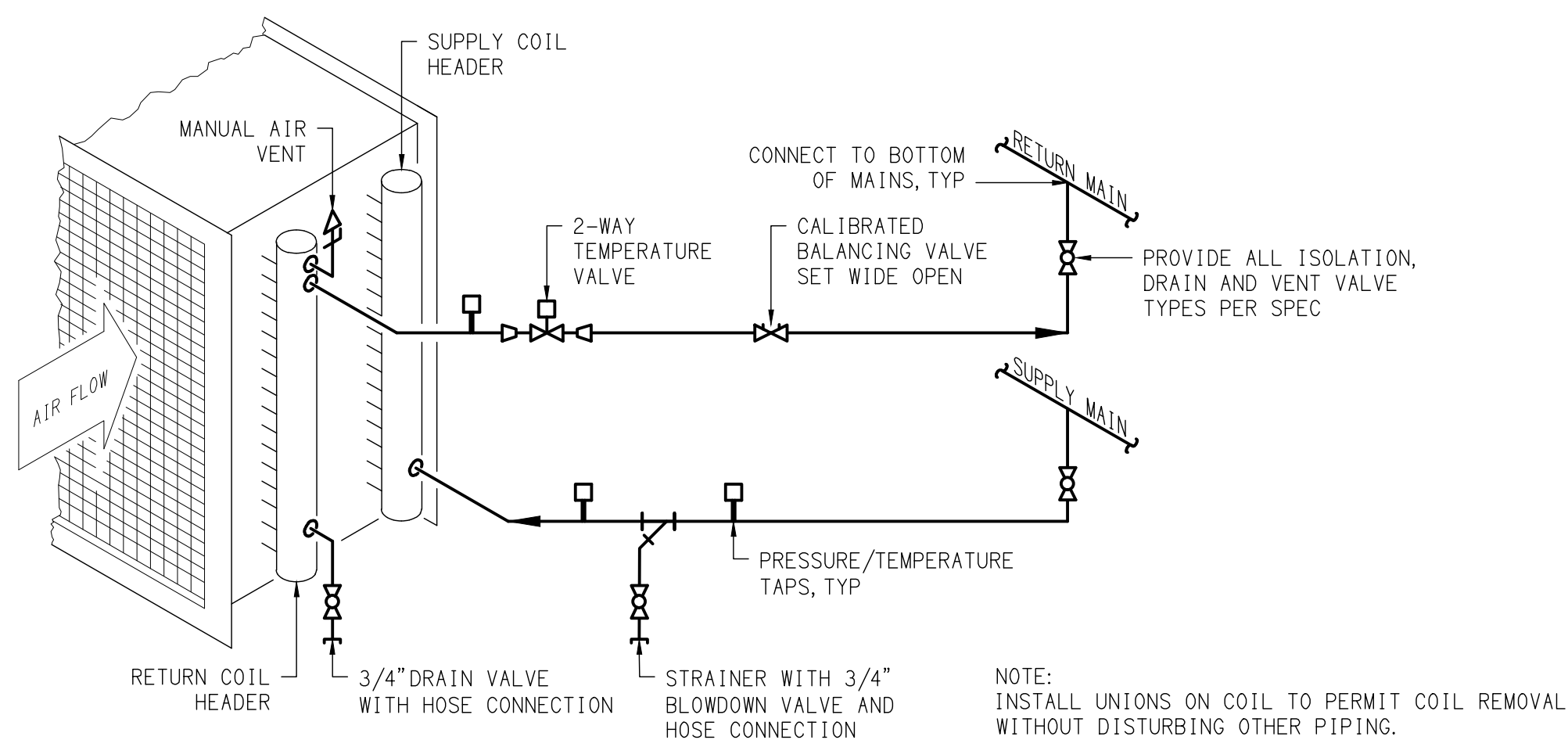
TPC SHERIFF REENTRY EXPANSION 2024
138 EAST COURT STREET,
CINCINNATI, OH 45202
ITB 082-24

ISSUANCES

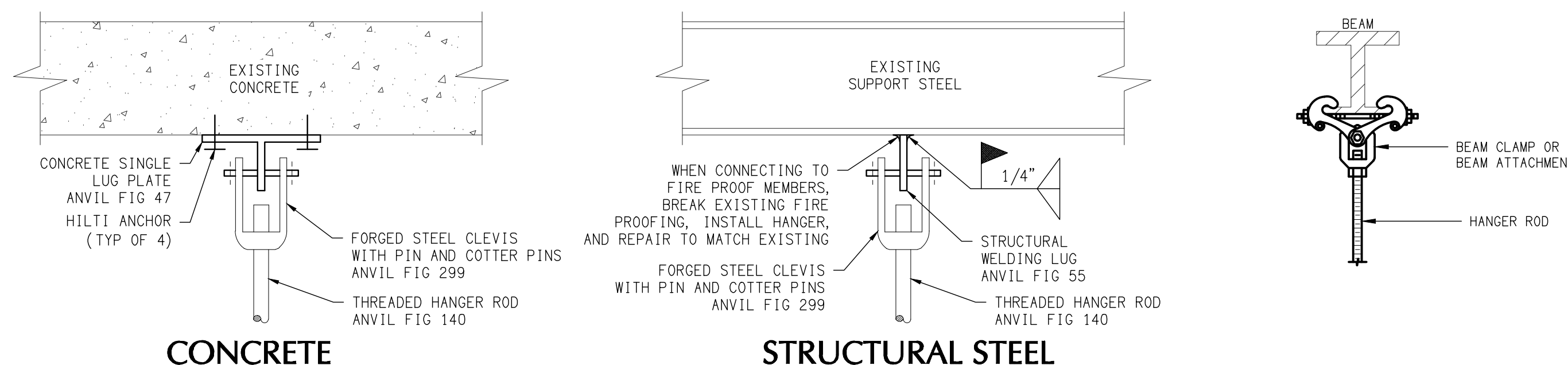
| DATE | NO. | ITEM |
|----------|-----|-------------------|
| 04/25/24 | A | ISSUED FOR REVIEW |
| 08/14/24 | B | ISSUED FOR REVIEW |
| 09/16/24 | C | ISSUED FOR BID |

| | |
|--------------------------|--|
| DRAWN BY TAB | PRELIMINARY DRAWING ONLY |
| CHECKED BY TTC | |
| CLIENT NO. | |
| PROJECT NO. 13600.097 | NOT TO BE USED FOR CONSTRUCTION |

| |
|--|
| DRAWING TITLE HVAC NEW WORK PLAN FIRST FLOOR |
| SHEET NO. H201 |

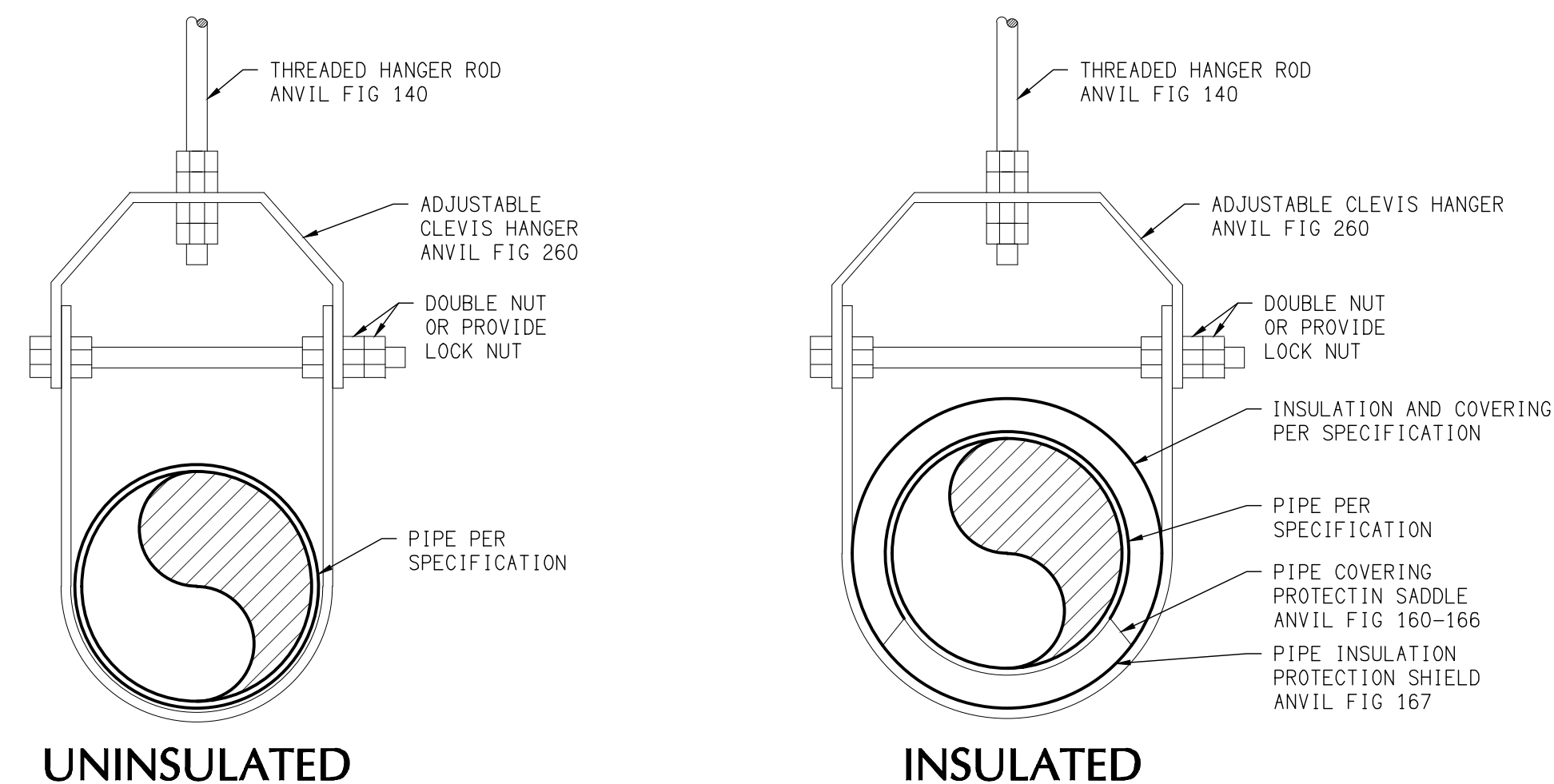


○ **DETAIL - WATER COIL TRIM, 2-WAY CNTRL VALVE** 1
SCALE: NONE H500



CONCRETE

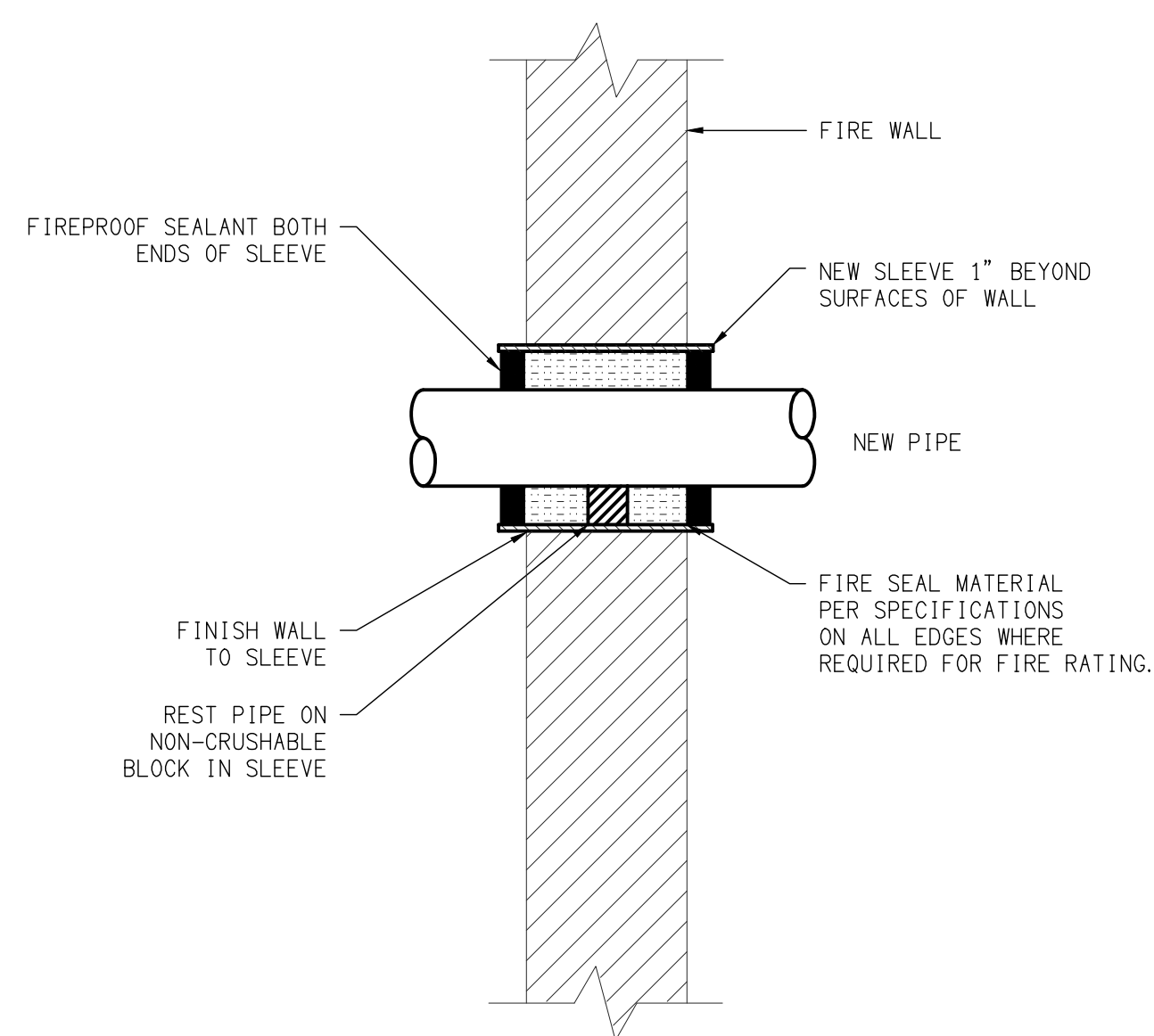
STRUCTURAL STEEL



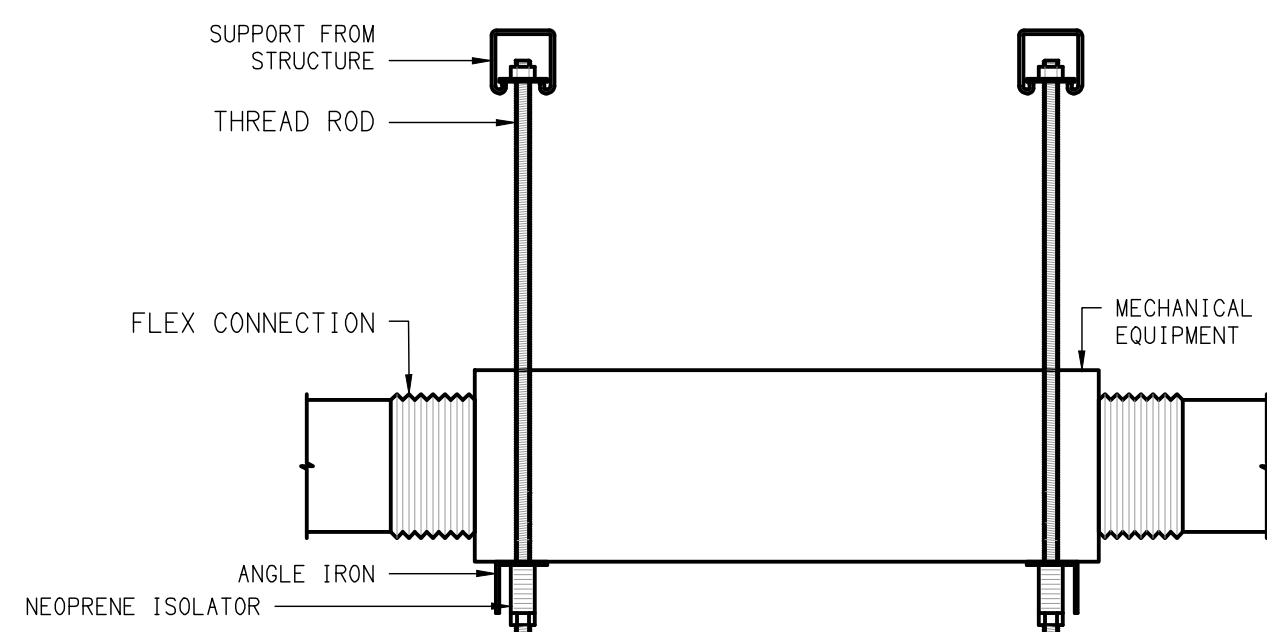
UNINSULATED

INSULATED

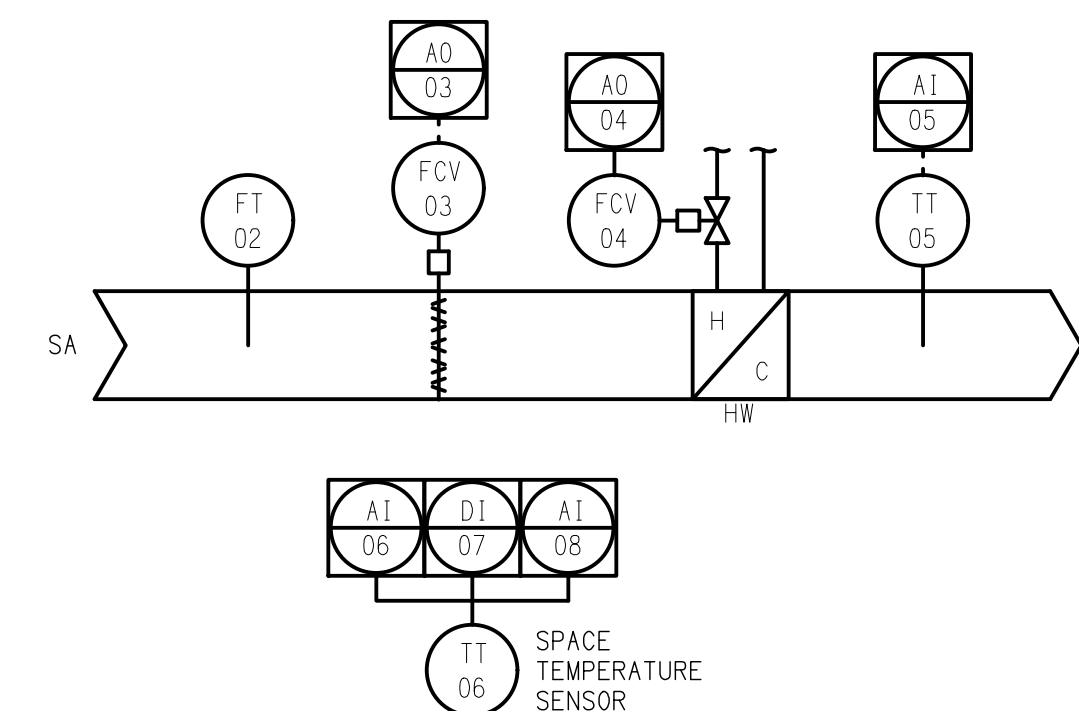
○ **DETAIL - PIPE HANGER SUPPORT** 2
SCALE: NONE H500



○ **DETAIL - FIRE WALL PIPE PENETRATION** 3
SCALE: NONE H500



○ **DETAIL - TERMINAL UNIT** 4
SCALE: NONE H500



○ **DETAIL - TERMINAL UNIT CONTROL DIAGRAM** 5
APPLIES TO ALL NEW SINGLE VAV BOXES H500



720 E Pete Rose Way, Suite 140
Cincinnati, OH 45202
T 513.241.4474 F 513.241.0081
thinkchamplin.com

THINK CREATE REALIZE

THERMALTECH ENGINEERING
FACILITY AND UTILITY SYSTEMS
ANALYSIS/DESIGN/CONSTRUCTION
813-561-2271 WWW.THERMALTECH.COM
CINCINNATI, OH • ELIZABETH, PA • FORT WORTH, TX • LANSING, MI • RICHMOND, VA • GRAND RAPIDS, MI • MEMPHIS, TN



TPC SHERIFF REENTRY EXPANSION 2024

138 EAST COURT STREET,
CINCINNATI, OH 45202

ITB 082-24

ISSUANCES

| DATE | NO. | ITEM |
|----------|-----|-------------------|
| 04/25/24 | A | ISSUED FOR REVIEW |
| 08/14/24 | B | ISSUED FOR REVIEW |
| 09/16/24 | C | ISSUED FOR BID |

DRAWN BY
TAB
CHECKED BY
TTC
CLIENT NO.
PROJECT NO.
13600.097

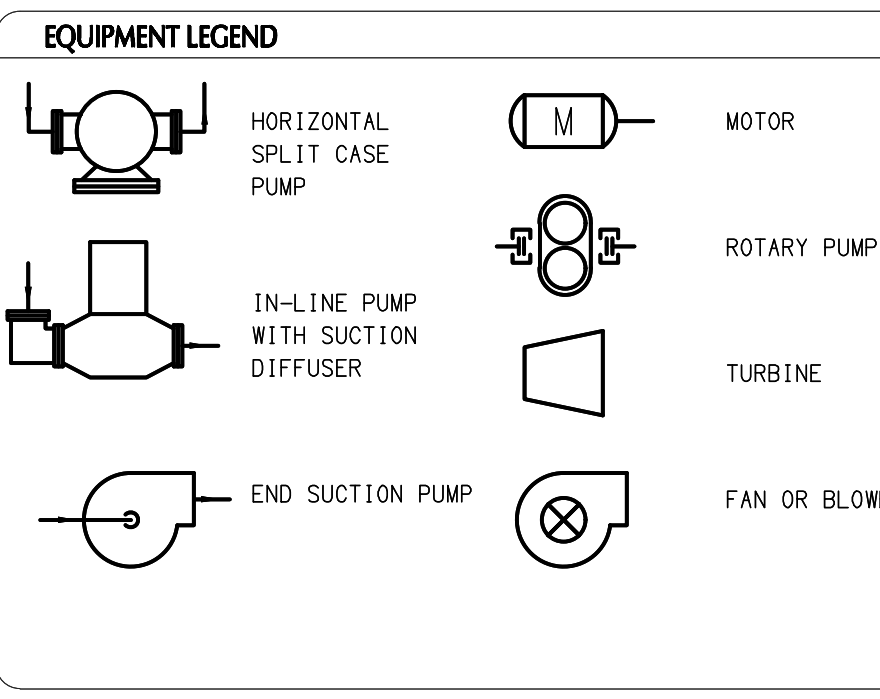
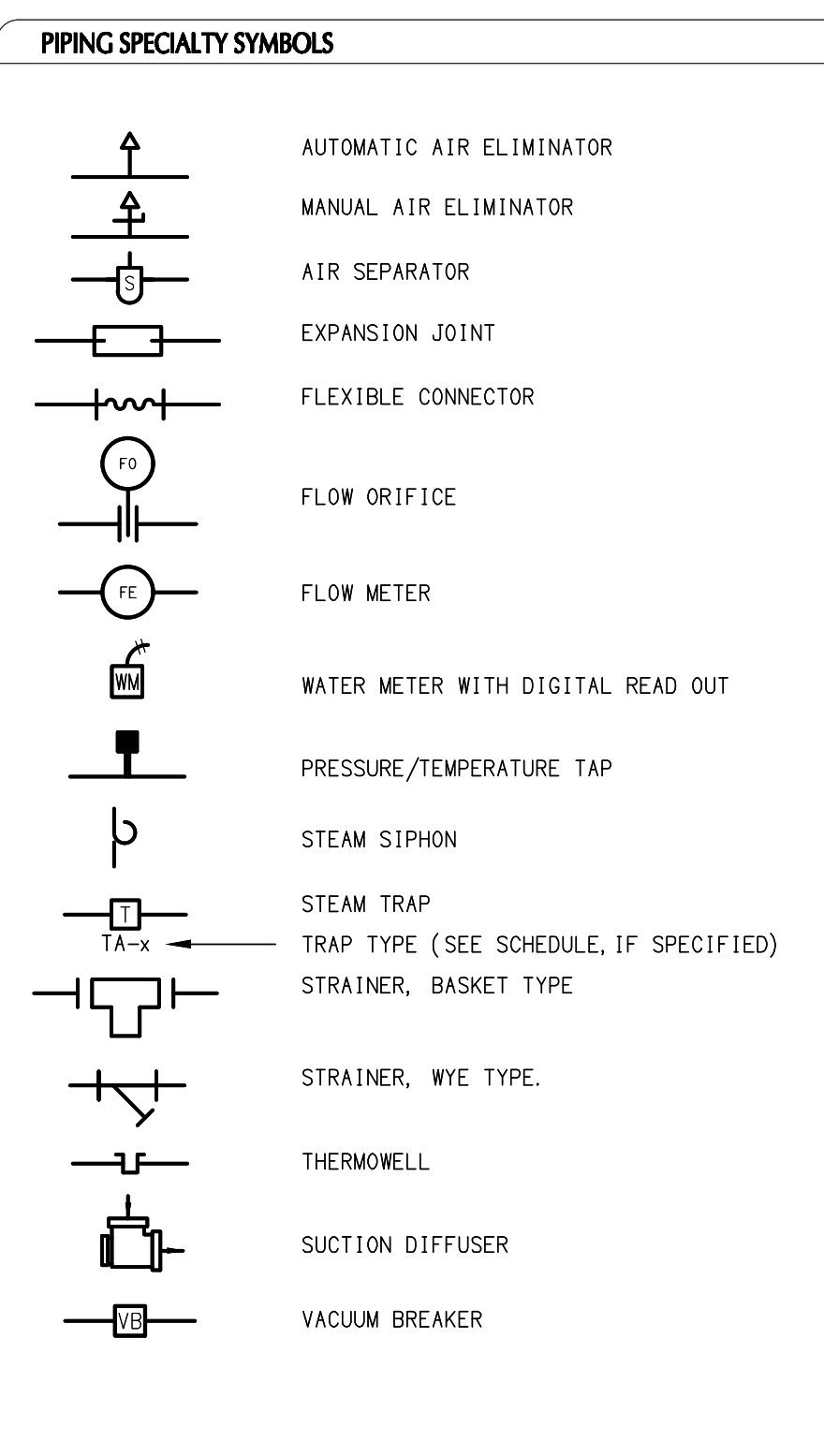
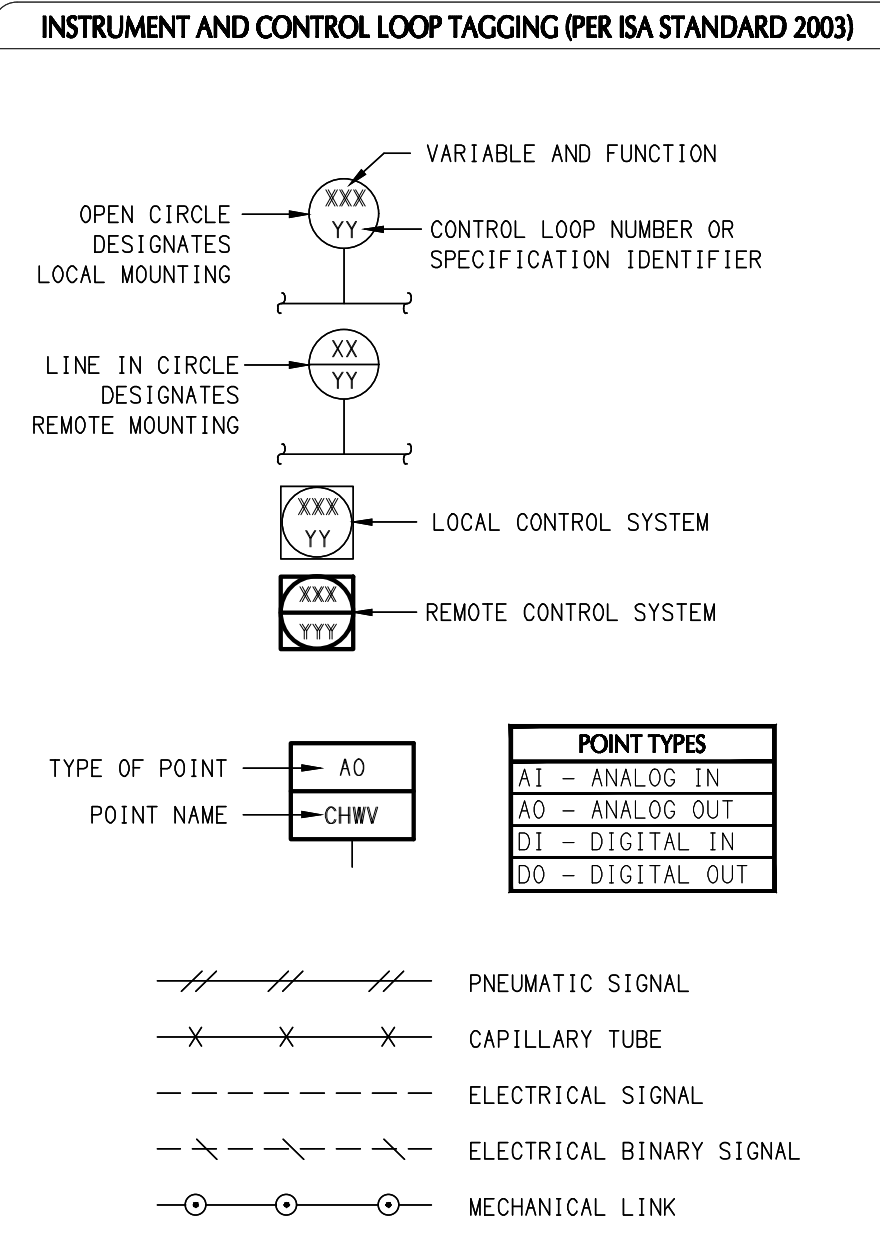
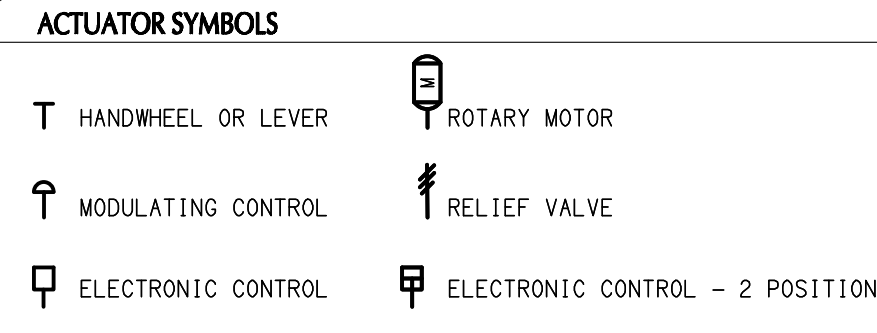
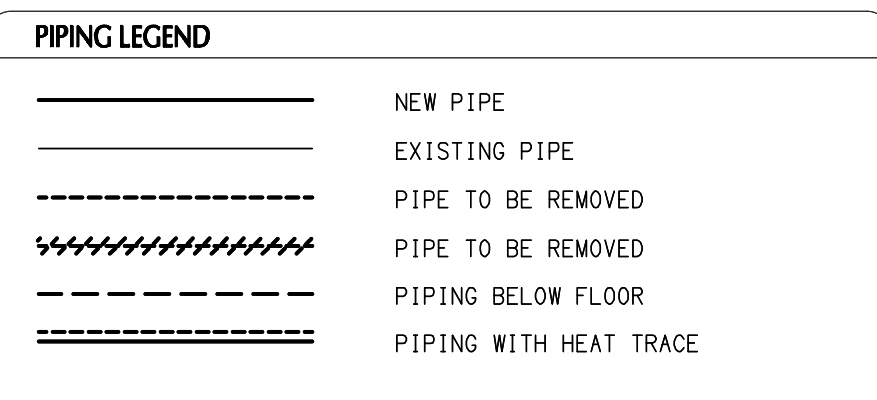
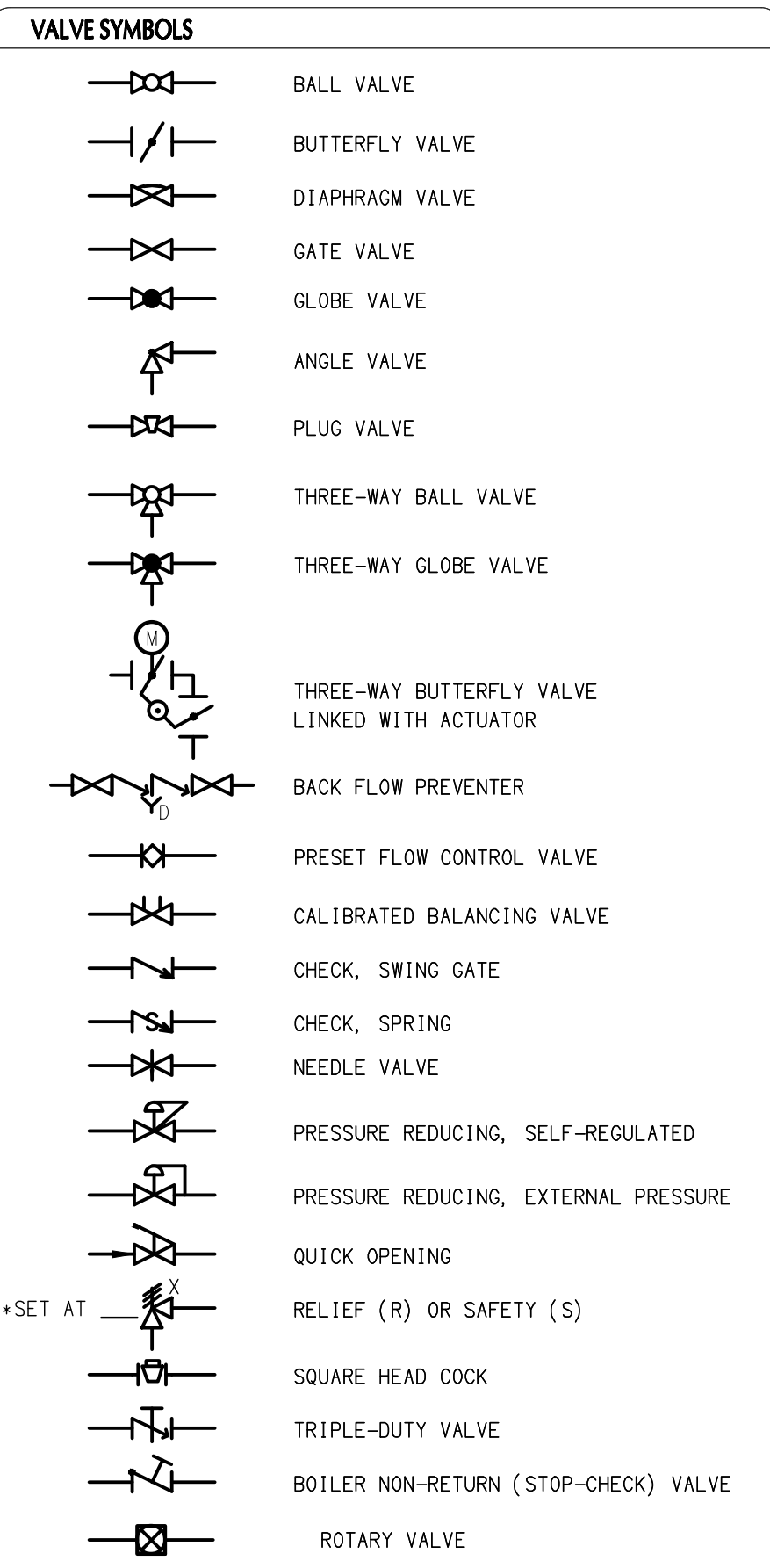
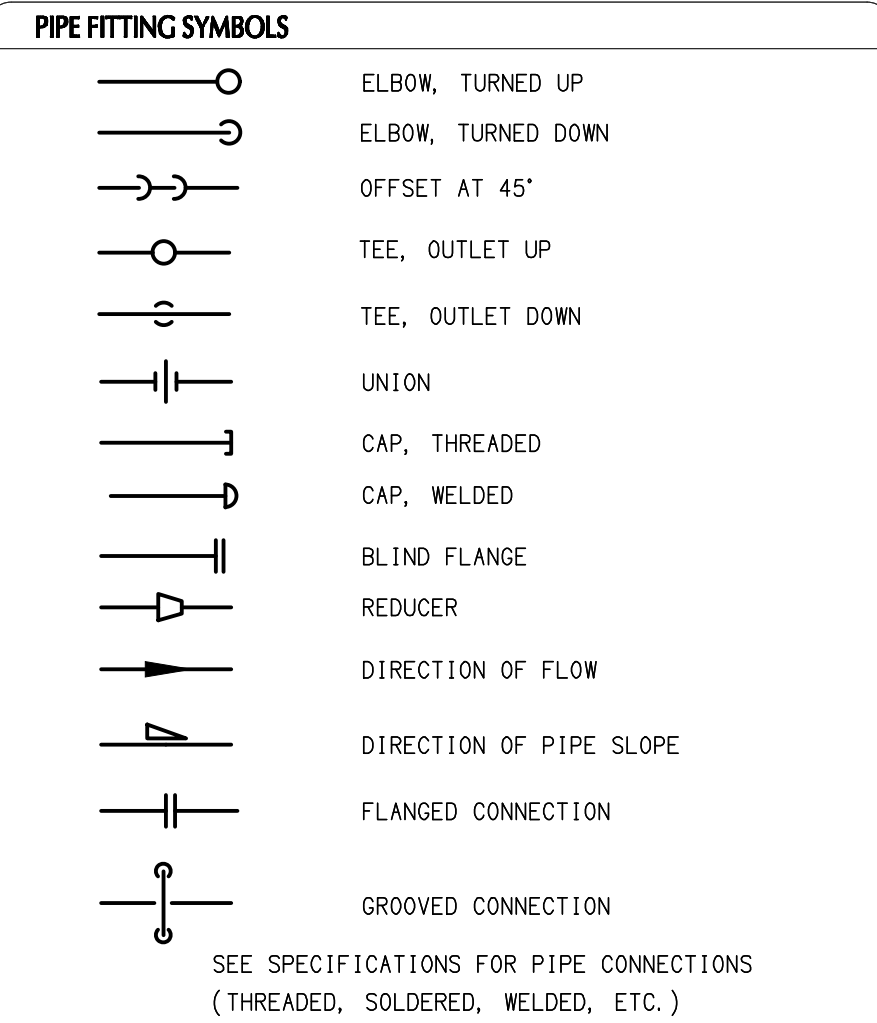
PRELIMINARY DRAWING ONLY

NOT TO BE USED FOR CONSTRUCTION

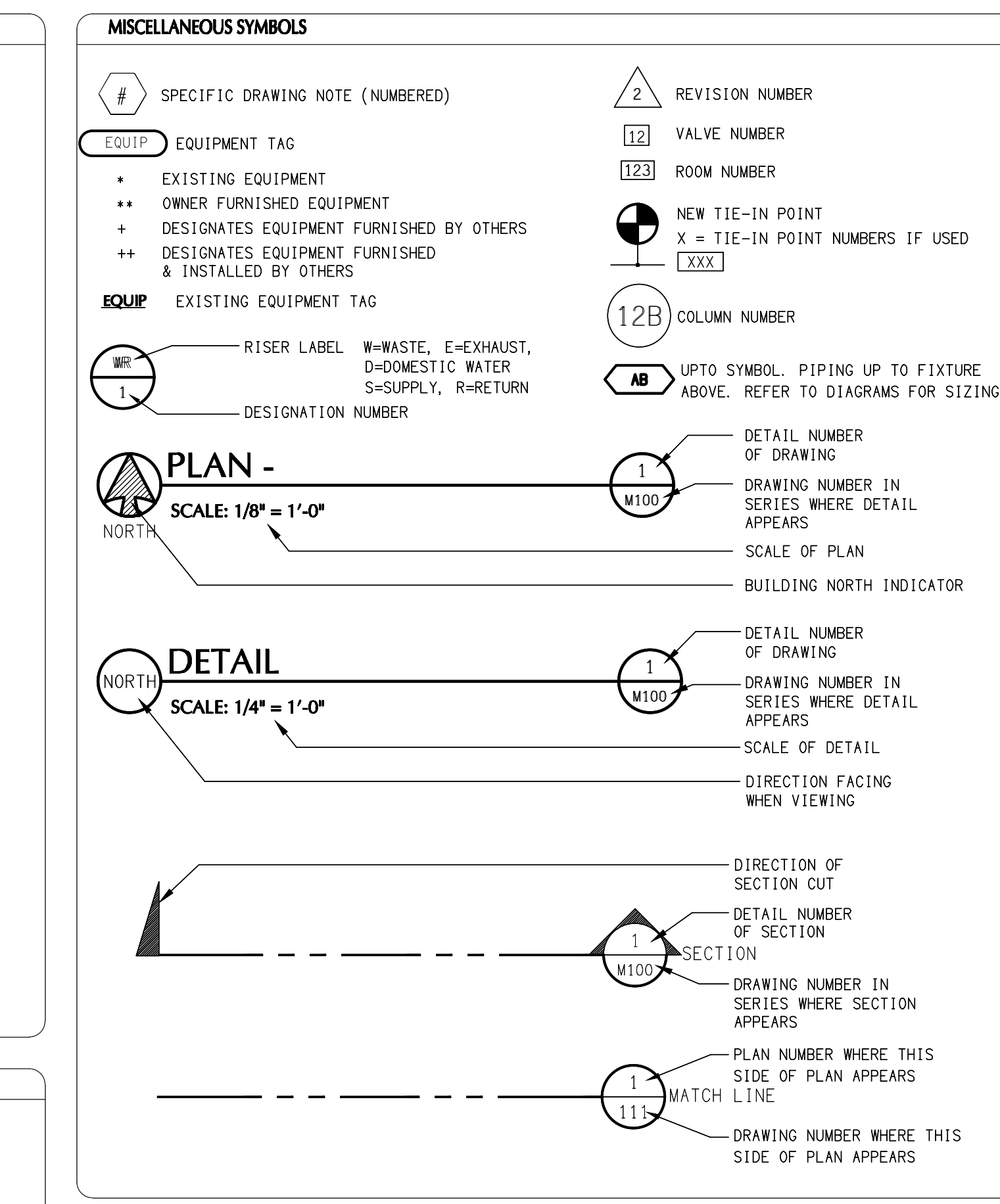
DRAWING TITLE
HVAC AND MECHANICAL DETAILS

SHEET NO.

H500



| FIRST LETTER | | SUCCEEDING LETTERS | | | |
|---------------------------------|--------------------------|-----------------------------|-----------------------|--|-----------------------|
| MEASURED OR INITIATING VARIABLE | MODIFIER | READOUT OR PASSIVE FUNCTION | OUTPUT FUNCTION | MODIFIER | |
| A | ANALYSIS, QUALITY | ALARM | | | |
| B | BURNER FLAME, COMBUSTION | USER'S CHOICE | USER'S CHOICE | USER'S CHOICE | |
| C | COND., pH, ORP | | CONTROL | | |
| D | DEW POINT | DIFFERENTIAL | | | |
| E | VOLTAGE (ELECTRICAL) | SENSOR (PRIMARY ELEMENT) | | | |
| F | FLOW RATE | RATIO (FRACTION) | | | |
| G | USER'S CHOICE | | GLASS, VIEWING DEVICE | | |
| H | MANUAL OPERATING | | | | HIGH (OPEN) |
| I | CURRENT (ELECTRICAL) | | INDICATE | | |
| J | POWER | SCAN | | | |
| K | TIME SCHEDULE | TIME RATE OF CHANGE | | CONTROL STATION | |
| L | LEVEL | | LIGHT (PILOT) | | LOW (CLOSE) |
| M | MOISTURE (HUMIDITY) | MOMENTARY | | | MIDDLE (INTERMEDIATE) |
| N | NOT USED | | USER'S CHOICE | USER'S CHOICE | USER'S CHOICE |
| O | NOT USED | | ORIFICE, RESTRICTION | | |
| P | PRESSURE | | POINT (TEST) CONN. | | |
| Q | QUANTITY | TOTALIZE, INTEGRATE | | | |
| R | RADIATION | | RECORD (HARDWARE) | | |
| S | SPEED, FREQUENCY | SAFETY | | SWITCH | |
| T | TEMPERATURE | | | TRANSMITTER | |
| U | MULTIVARIABLE | | MULTIFUNCTION | MULTIFUNCTION | MULTIFUNCTION |
| V | VIBRATION | | | VALVE, DAMPER, LOUVER | |
| W | WEIGHT, FORCE | | WELL | | |
| X | UNCLASSIFIED | X AXIS | UNCLASSIFIED | UNCLASSIFIED | UNCLASSIFIED |
| Y | EVENT, STATE OR PRESENCE | Y AXIS | UNCLASSIFIED | RELAY, COMPUTE, CONVERT DRIVER, ACTUATOR, UNCLASSIFIED FINAL CONTROL ELEMENT | |
| Z | POSITION, DIMENSION | Z AXIS | | | |

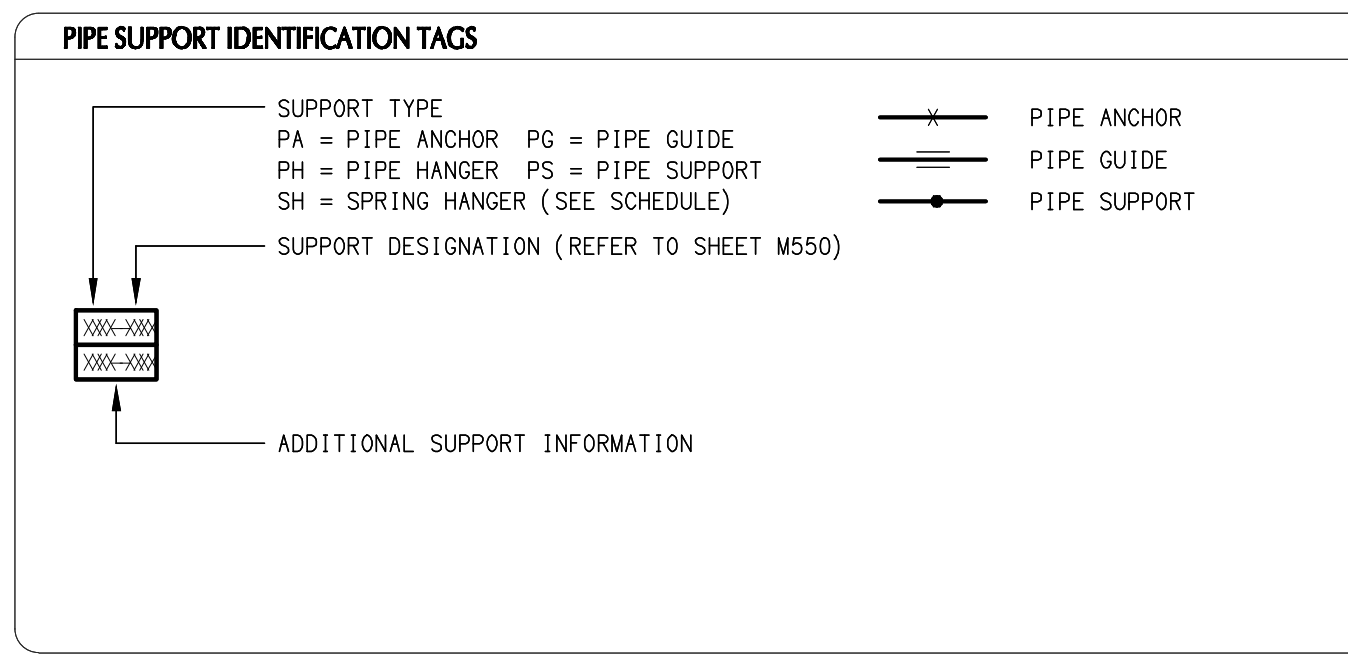


PIPE FLUID ABBREVIATIONS

| | |
|----------|--------------------------------------|
| BBD | BOILER BLOW DOWN |
| BD | BLOW DOWN |
| BCA | BOILER COMBUSTION AIR |
| BFG | BOILER FLUE GAS |
| BFW | BOILER FEED WATER |
| BS | BRINE SUPPLY |
| BR | BRINE RETURN |
| CBD | CONTINUOUS BOILER BLOW DOWN |
| CD | CONDENSATE DRAIN |
| CHWR | CHILLED WATER RETURN |
| CHWS | CHILLED WATER SUPPLY |
| CW | CITY WATER (POTABLE, DOM) |
| CWS | CONDENSER WATER SUPPLY |
| CWR | CONDENSER WATER RETURN |
| DHW | DOMESTIC HOT WATER (POTABLE) |
| DHWR | DOMESTIC HOT WATER RETURN (POTABLE) |
| DR | DRAIN |
| DTWS | DUAL TEMPERATURE WATER SUPPLY |
| DTWR | DUAL TEMPERATURE WATER RETURN |
| EXH | ENGINE EXHAUST |
| FOR | FUEL OIL RETURN |
| FOS | FUEL OIL SUPPLY |
| FP | FIRE PROTECTION |
| FW | FACTORY WATER |
| GLR | GLYCOL RETURN |
| GLS | GLYCOL SUPPLY |
| HRR | HEAT RECOVERY RETURN |
| HRS | HEAT RECOVERY SUPPLY |
| HTWR | HIGH TEMPERATURE WATER RETURN |
| HTWS | HIGH TEMPERATURE WATER SUPPLY |
| HWR | HOT WATER RETURN |
| HWS | HOT WATER SUPPLY |
| IA-XXX | INSTRUMENT AIR (PSIG) |
| KHW | KITCHEN HOT WATER (POTABLE) |
| KHWR | KITCHEN HOT WATER RETURN |
| MA | MEDICAL AIR |
| ME | MEDICAL EVACUATION |
| MNO | MEDICAL NITROUS OXIDE |
| MO | MEDICAL OXYGEN |
| MUW | MAKE UP WATER |
| MV | MEDICAL VACUUM |
| NG-XXX | NATURAL GAS (PSIG) |
| N2 | NITROGEN |
| PC | PUMPED CONDENSATE |
| PR | PROPANE |
| PW | PROCESS WASTE, VENTS & DRAINS |
| RHG | REFRIGERANT HOT GAS |
| RL | REFRIGERANT LIQUID |
| ROW | REVERSE OSMOSIS WATER |
| RS | REFRIGERANT SUCTION |
| RV | RELIEF VENT |
| RWS | RIVER WATER SUPPLY |
| RWR | RIVER WATER RETURN |
| SAN | SANITARY SEWER |
| SC-XXX | STEAM CONDENSATE (PSIG) |
| ST | STORM SEWER |
| STM-XXX | STEAM (PSIG) |
| SS-XX/XX | SUPERHEATED STEAM (PSIG/TEMP) |
| SSW | SOFTENED SERVICE WATER (NON-POTABLE) |
| SV | SANITARY VENT |
| SW | SERVICE WATER (NON-POTABLE) |
| TW | TREATED WATER (DEMINERALIZED) |
| V | VENT |
| VSC | VACUUM STEAM CONDENSATE |
| VTR | VENT THROUGH ROOF |
| WTR | WELL WATER |
| WWS | WELL WATER SUPPLY |
| WWR | WELL WATER RETURN |

MISCELLANEOUS ABBREVIATIONS

| | |
|------|-----------------------------------|
| ACFM | ACTUAL CUBIC FEET/MINUTE |
| AFF | ABOVE FINISHED FLOOR |
| BLDG | BUILDING |
| BLR | BOILER |
| BOD | BOTTOM OF DUCT |
| BOI | BOTTOM OF INSULATION |
| BOP | BOTTOM OF PIPE |
| BOS | BOTTOM OF STEEL |
| BTU | BRITISH THERMAL UNIT |
| CC | COMMON |
| CC | CONTROLS CONTRACTOR |
| CONC | CONCRETE |
| COND | CONDENSER |
| COP | CENTER OF PIPE |
| CFM | CUBIC FEET PER MINUTE |
| DIA | DIAMETER |
| DWG | DRAWING |
| EA | EXHAUST AIR |
| EC | ELECTRICAL CONTRACTOR |
| F | FAHRENHEIT (DEGREES) |
| FBO | FURNISHED BY OTHERS |
| FC | FIRE PROTECTION CONTRACTOR |
| FFM | FEET PER MINUTE |
| FFS | FEET PER SECOND |
| FOB | FLAT ON BOTTOM |
| FOT | FLAT ON TOP |
| FT | FEET |
| FTF | FITTING TO FITTING |
| GAL | GALLONS |
| GC | GENERAL TRADES CONTRACTOR |
| GPH | GALLONS PER HOUR |
| GPM | GALLONS PER MINUTE |
| HB | HOSE BIB |
| HP | HORSEPOWER |
| HZ | HERTZ |
| IE | INVERT ELEVATION |
| IN | INCHES |
| KEC | KITCHEN EQUIPMENT CONTRACTOR |
| KW | KILOWATT |
| M | MOTOR |
| MAX | MAXIMUM |
| MC | MECHANICAL CONTRACTOR |
| MCC | MOTOR CONTROL CENTER |
| MGC | MEDICAL GAS COLUMN |
| MIN | MINIMUM |
| NC | NORMALLY CLOSED |
| NO | NORMALLY OPEN |
| NPC | NITROGEN PRESSURE CONTROL |
| NPS | NITROGEN PRESSURE SWITCH |
| NTS | NOT TO SCALE |
| OA | OUTSIDE AIR |
| OD | OUTSIDE DIAMETER |
| OF | OWNER FURNISHED |
| PC | PLUMBING CONTRACTOR |
| P&ID | PROCESS & INSTRUMENTATION DIAGRAM |
| PSIA | POUNDS PER SQUARE INCH ABSOLUTE |
| PSIG | POUNDS PER SQUARE INCH GAUGE |
| RA | RETURN AIR |
| SA | SUPPLY AIR |
| SC | SECURITY CONTRACTOR |
| SCFM | STANDARD CUBIC FEET PER MINUTE |
| SPEC | SPECIFICATIONS |
| TA | TRANSFER AIR |
| TDH | TOTAL DYNAMIC HEAD |
| TOD | TOP OF DUCT |
| TOP | TOP OF PIPE |
| TOS | TOP OF STEEL |
| TP | TYPICAL |
| VB | VALVE BOX |
| VIF | VERIFY IN FIELD |
| VS | VACUUM SWITCH |
| WK | WORK POINT (ELEVATION) |
| WP | WATER PROOF |



GENERAL NOTES

A FOR KEY PLAN/MAP AND DRAWING INDEX SEE COVER SHEET.

B FOR SYMBOLS AND ABBREVIATIONS SEE DRAWING LEGEND SHEET.

C COORDINATE THE INSTALLATION WITH EXISTING CONDITIONS, THE OWNER'S MAINTENANCE STAFF, AND THE WORK OF OTHER CONTRACTORS.

D EXAMINE ALL EXISTING CONDITIONS. VERIFY ALL DIMENSIONS. THE DRAWINGS ARE ILLUSTRATIVE AND MAY NOT REFLECT EXACT CONDITIONS OR DIMENSIONS.

E DO NOT SCALE THE DRAWINGS. THE DRAWINGS ARE DIAGRAMMATIC AND SHOW THE GENERAL ARRANGEMENT OR GEOMETRICAL RELATIONSHIP OF EQUIPMENT AND SERVICES. THEY ARE NOT INTENDED TO SHOW EVERY OFFSET, FITTING, AND COMPONENT. DO NOT USE THE PLANS FOR THE EXACT LOCATION OF EQUIPMENT.

F THE DESIGN AND DRAWINGS ARE BASED ON THE USE OF SPECIFIC REFERENCE PRODUCTS, THE SELECTION OF WHICH HAS IMPACTED THE DESIGNS OF OTHER TRADES. IF ALTERNATE MANUFACTURERS, SIZES, OR MODELS ARE SUBMITTED OR BID, IT IS THE RESPONSIBILITY OF THE CONTRACTOR AND ALL SUBCONTRACTORS TO COORDINATE ALL IMPACTS PRIOR TO BID. NO EXTRAS WILL BE ALLOWED FOR CHANGES REQUIRED TO ACCOMMODATE ALTERNATE PRODUCTS THAT ARE BID OR INSTALLED AT THE CONTRACTOR'S OPTION. ENGINEERING FEES WHICH RESULT FROM RE-DESIGN FOR ALTERNATE PRODUCTS SHALL BE PAID BY THE CONTRACTORS AT NO ADDITIONAL COST TO THE OWNER.

G DRAWINGS SPECIFIC TO THIS TRADE DO NOT LIMIT THE RESPONSIBILITY OR WORK REQUIRED BY THE CONTRACT DOCUMENTS. REFER TO DRAWINGS AND SPECIFICATIONS OF OTHER TRADES FOR COMPLETE INFORMATION PRIOR TO BID.

H WHERE CONFLICTS EXIST AMONG DRAWINGS, SPECIFICATIONS, AND EQUIPMENT SCHEDULES, THE MORE STRINGENT SHALL APPLY. NOTIFY THE ENGINEER OF ALL CONFLICTS FOR RESOLUTION OR INTERPRETATION.

I NOTIFY THE OWNER AND FIELD VERIFY CONDITIONS BEFORE EXCAVATING, TRENCHING, SAW CUTTING, CORING, OR MAKING OTHER STRUCTURAL MODIFICATIONS.

J ANY EXISTING CONDITION DISCOVERED DURING THE DEMOLITION OR CONSTRUCTION PROCESS WHICH, BY GENERALLY ACCEPTED CONSTRUCTION PRACTICES, SHOULD BE REMEDIATED, SHOULD BE BROUGHT TO THE ATTENTION OF THE ENGINEER/ARCHITECT IMMEDIATELY, IN WRITING.

K PROVIDE PROTECTION TO THE EXISTING FACILITY FROM DAMAGE OF ANY KIND DURING ALL PHASES OF THE PROJECT.

M OBTAIN WRITTEN APPROVAL FROM THE ENGINEER BEFORE RE-USING EXISTING EQUIPMENT, COMPONENTS, OR OPENINGS.

N COORDINATE ALL SERVICE OUTAGES WITH THE OWNER. MAINTAIN SERVICE TO OTHER PARTS OF CAMPUS DURING DEMOLITION.

O THE CONTRACTOR SHALL CONDUCT A MEETING AT THE BEGINNING OF EACH SHIFT TO FAMILIARIZE THE WORKERS WITH THE REQUIREMENTS OF THE DAY'S WORK.

P OSHA EXCAVATION SAFETY PRACTICES ARE TO BE FOLLOWED AT ALL TIMES. OPEN TRENCHES ARE TO BE CLEARLY MARKED OR ILLUMINATED DURING NON-WORKING PERIODS.

Q CONTRACTOR IS TO NOTIFY CUSTOMER ASSOCIATE PRIOR TO ANY EXCAVATION OR TRENCHING. ALL KNOWN UNDERGROUND UTILITIES WILL BE MARKED BY THE CUSTOMER. ANY DAMAGE TO MARKED UTILITIES WILL BE CORRECTED AT THE CONTRACTOR'S EXPENSE TO THE SATISFACTION OF THE CUSTOMER ASSOCIATE AND PROJECT ENGINEER.

R THE PROJECT INTENT IS TO MINIMIZE ANY SYSTEM DOWNTIME AND ROAD CLOSURES. THE ACTUAL SYSTEM TIE IN WILL BE COORDINATED AND SCHEDULED WITH THE OWNER.

720 E Pete Rose Way, Suite 140
Cincinnati, OH 45202
T 513.241.4474 F 513.241.0081
thinkchamplin.com

THINK CREATE REALIZE

FACILITY AND UTILITY SYSTEMS
ANALYSIS/DESIGN/CONSTRUCTION
513-561-2271 WWW.THERMALTECH.COM
CINCINNATI, OH • ELIZABETH, PA • FORT WORTH, TX • LANCASTER, PA
RICHMOND, VA • GRAND RAPIDS, MI • MEMPHIS, TN

TPC SHERIFF
REENTRY
EXPANSION 2024

138 EAST COURT STREET,
CINCINNATI, OH 45202
ITB 082-24

ISSUANCES

| DATE | NO. | ITEM |
|----------|-----|-------------------|
| 04/25/24 | A | ISSUED FOR REVIEW |
| 08/14/24 | B | ISSUED FOR REVIEW |
| 09/16/24 | C | ISSUED FOR BID |

DRAWN BY
TAB

CHECKED BY
TTC

CLIENT NO.

PROJECT NO.
13600.097

DRAWING TITLE
**MECHANICAL
LEGEND AND
GENERAL NOTES**

SHEET NO.
M001

PRELIMINARY
DRAWING
ONLY

NOT TO
BE USED FOR
CONSTRUCTION

SOME SYMBOLS AND ABBREVIATIONS
APPEARING ON THIS SHEET MAY NOT
BE USED ON THE PROJECT.



720 E Pete Rose Way, Suite 140
Cincinnati, OH 45202
T 513.241.4474 F 513.241.0081
thinkchamplin.com

THINK CREATE REALIZE

THERMALTECH ENGINEERING
FACILITY AND UTILITY SYSTEMS
ANALYSIS/DESIGN/CONSTRUCTION
513-561-2271 • WWW.THERMALTECH.COM
CINCINNATI, OH • CLEVELAND, OH • FORT WORTH, TX • LANSING, MI • RICHMOND, IN • GRAND RAPIDS, MI • MEMPHIS, TN



TPC SHERIFF REENTRY EXPANSION 2024

138 EAST COURT STREET,
CINCINNATI, OH 45202
ITB 082-24

ISSUANCES

| DATE | NO. | ITEM |
|----------|-----|-------------------|
| 04/25/24 | A | ISSUED FOR REVIEW |
| 08/14/24 | B | ISSUED FOR REVIEW |
| 09/16/24 | C | ISSUED FOR BID |

| | |
|--------------------------|---|
| DRAWN BY TAB | PRELIMINARY DRAWING ONLY |
| CHECKED BY TTC | |
| CLIENT NO. | |
| PROJECT NO. 13600.097 | |

DRAWING TITLE
**MECHANICAL PIPING
DEMOLITION PLAN
BASEMENT**

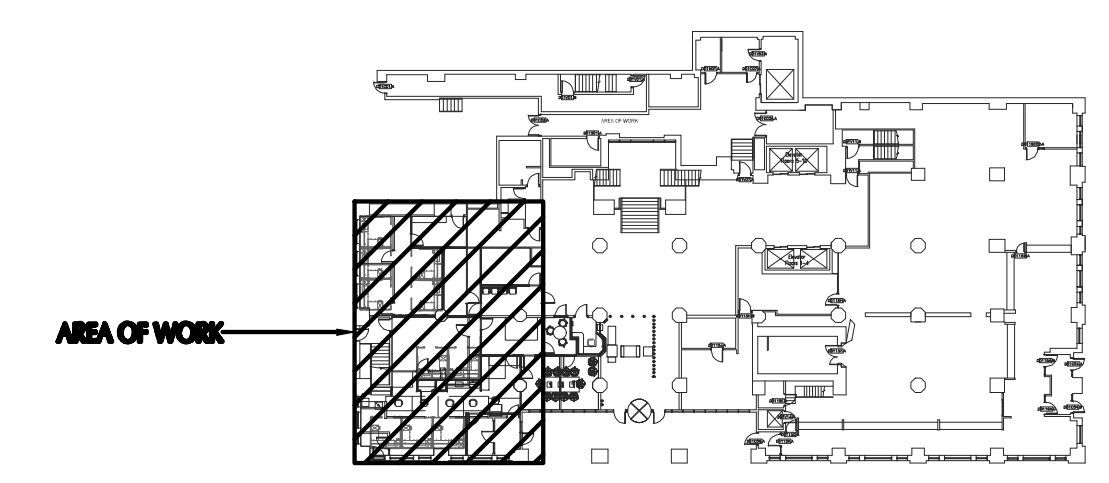
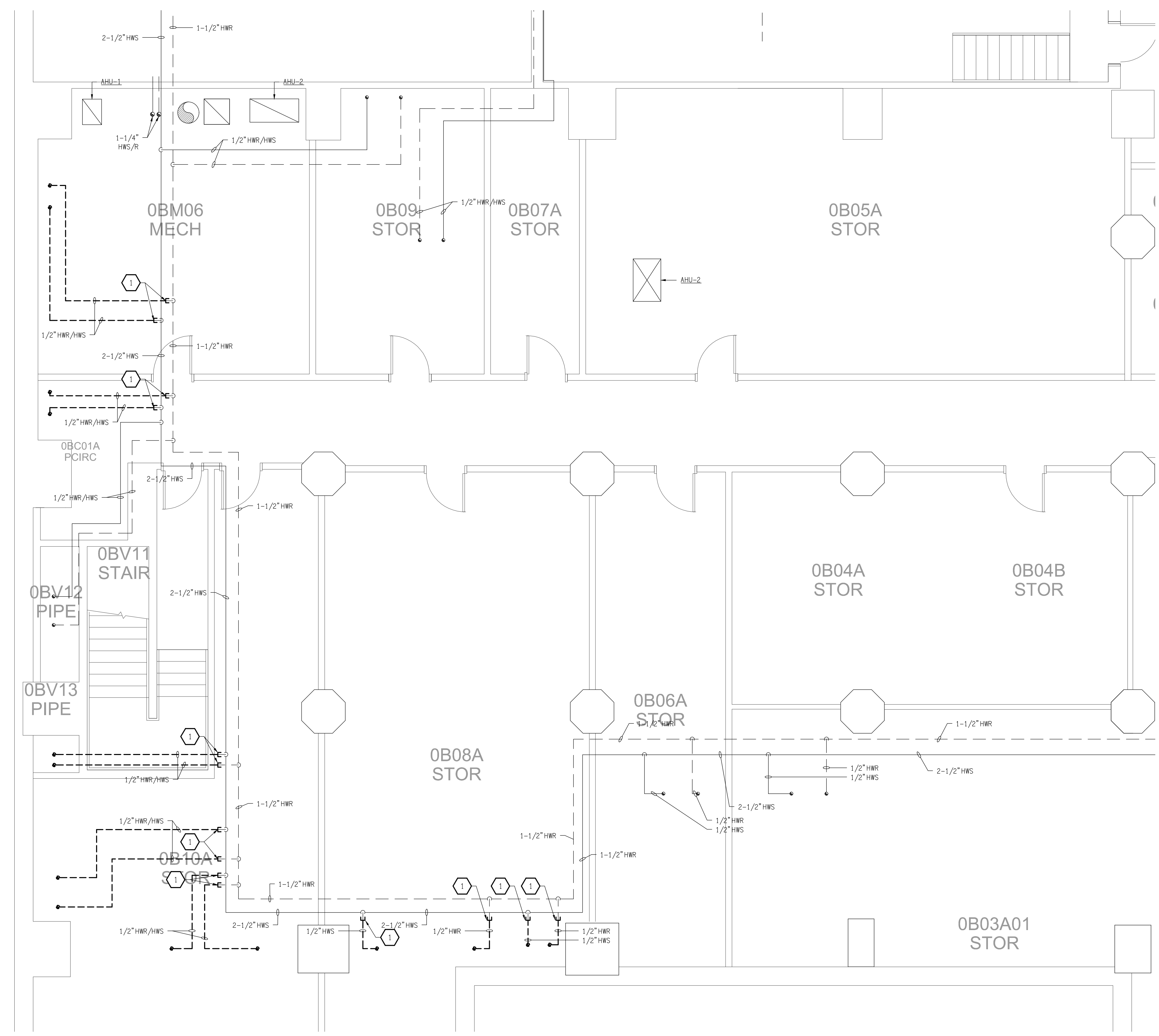
SHEET NO.
M100

DRAWING NOTES
DRAWING M100

- 1 DEMO EXISTING HWR/HWS PIPING BACK TO MAIN AND CAP. PATCH FLOOR/CEILING PENETRATION TO MATCH EXISTING.

GENERAL NOTES
APPLIES TO ALL DRAWINGS OF THIS TRADE

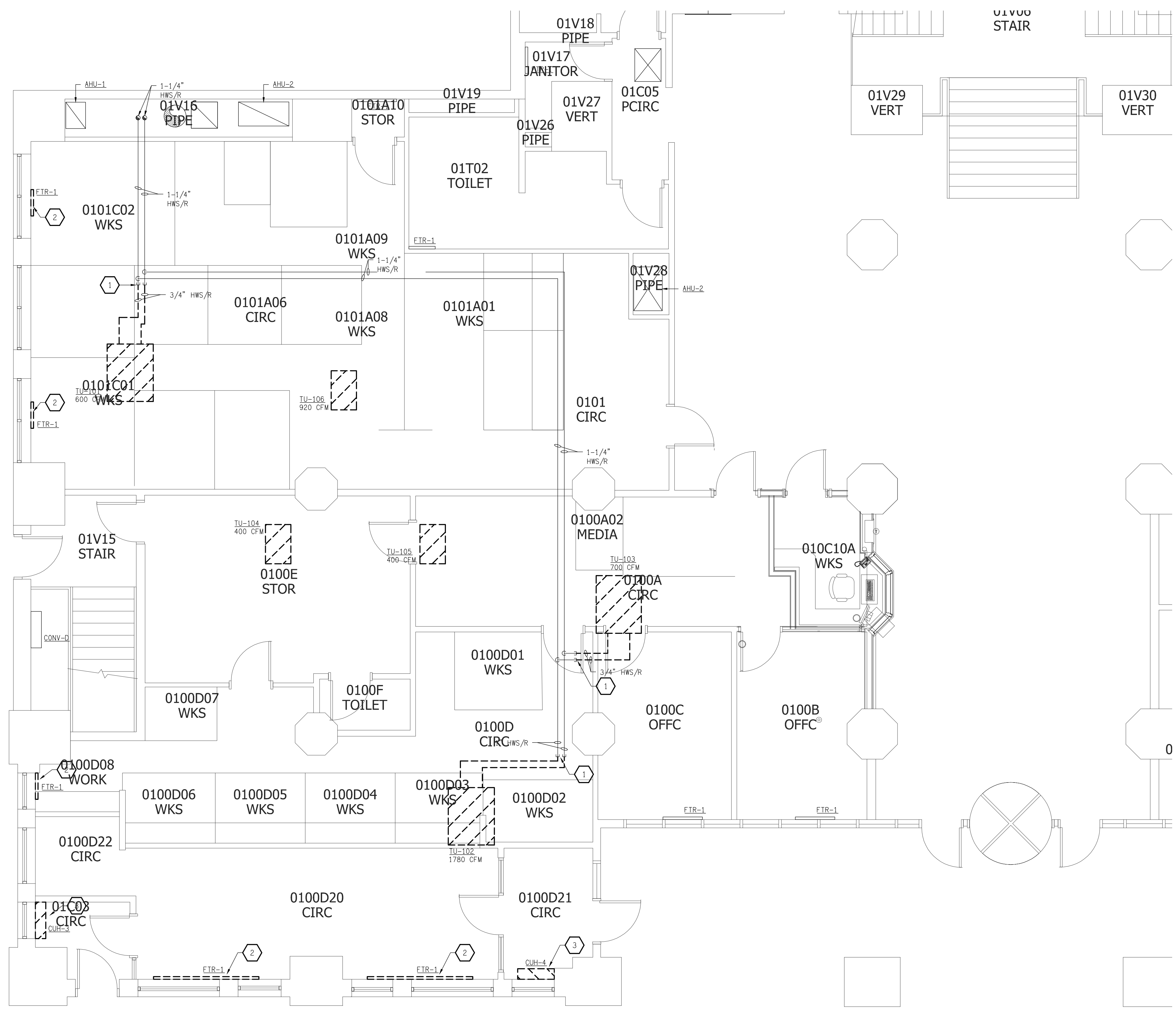
- A FOR KEY PLAN AND DRAWING INDEX SEE DRAWING ARCHITECTURAL DRAWING.
- B FIELD VERIFY ALL SIZES, DIMENSIONS, LOCATIONS, ETC PRIOR TO INITIATION OF CONSTRUCTION



PLAN - DEMOLITION - BASEMENT
SCALE: 1/4" = 1'-0"

1
M100

KEY PLAN

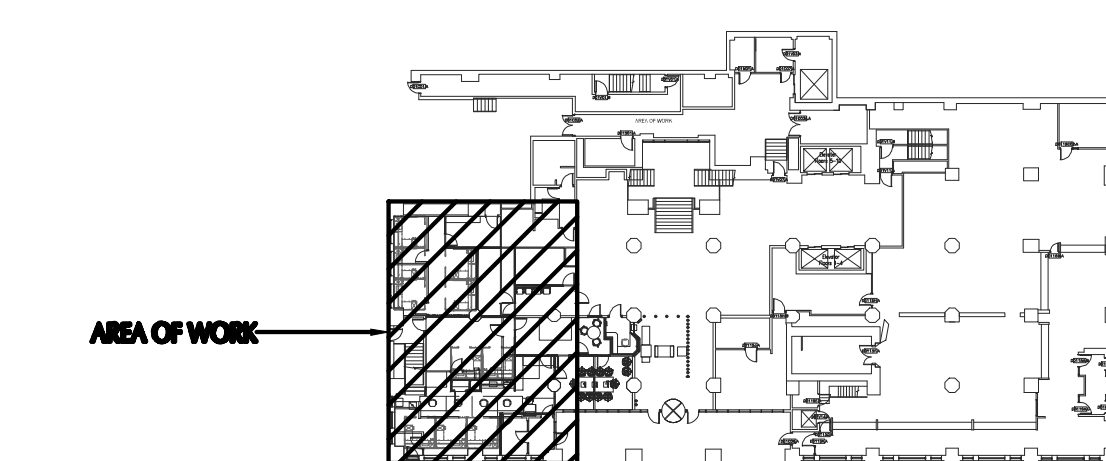


DRAWING NOTES
DRAWING M101

- 1 DEMO EXISTING HWR/HWS PIPING BACK TO THIS POINT AND CAP.
- 2 DEMO EXISTING FIN TUBE HEATER AND PIPING TO BELOW FLOOR AND CAP. REFER TO BASEMENT PLANS FOR LOCATION.
- 3 DEMO EXISTING CABINET UNIT HEATER AND PIPING TO BELOW FLOOR AND CAP. REFER TO BASEMENT PLANS FOR LOCATION.

GENERAL NOTES
APPLIES TO ALL DRAWINGS OF THIS TRADE

- A FOR KEY PLAN AND DRAWING INDEX SEE DRAWING ARCHITECTURAL DRAWING.
- B FIELD VERIFY ALL SIZES, DIMENSIONS, LOCATIONS, ETC PRIOR TO INITIATION OF CONSTRUCTION



PLAN - DEMOLITION - FIRST FLOOR
SCALE: 1/4" = 1'-0"
NORTH

KEY PLAN



720 E Pete Rose Way, Suite 140
Cincinnati, OH 45202
T 513.241.4474 F 513.241.0081
thinkchamplin.com

THINK CREATE REALIZE

THERMALTECH ENGINEERING
FACILITY AND UTILITY SYSTEMS
ANALYSIS/DESIGN/CONSTRUCTION
513-561-2271 • WWW.THERMALTECH.COM
CINCINNATI, OH • ELIZABETH, PA • FORT WORTH, TX • LANSING, MI • RICHMOND, VA • GRAND RAPIDS, MI • WASHINGTON, DC



TPC SHERIFF REENTRY EXPANSION 2024

138 EAST COURT STREET,
CINCINNATI, OH 45202
ITB 082-24

ISSUANCES

| DATE | NO. | ITEM |
|----------|-----|-------------------|
| 04/25/24 | A | ISSUED FOR REVIEW |
| 08/14/24 | B | ISSUED FOR REVIEW |
| 09/16/24 | C | ISSUED FOR BID |

DRAWN BY
TAB

CHECKED BY
TTC

CLIENT NO.

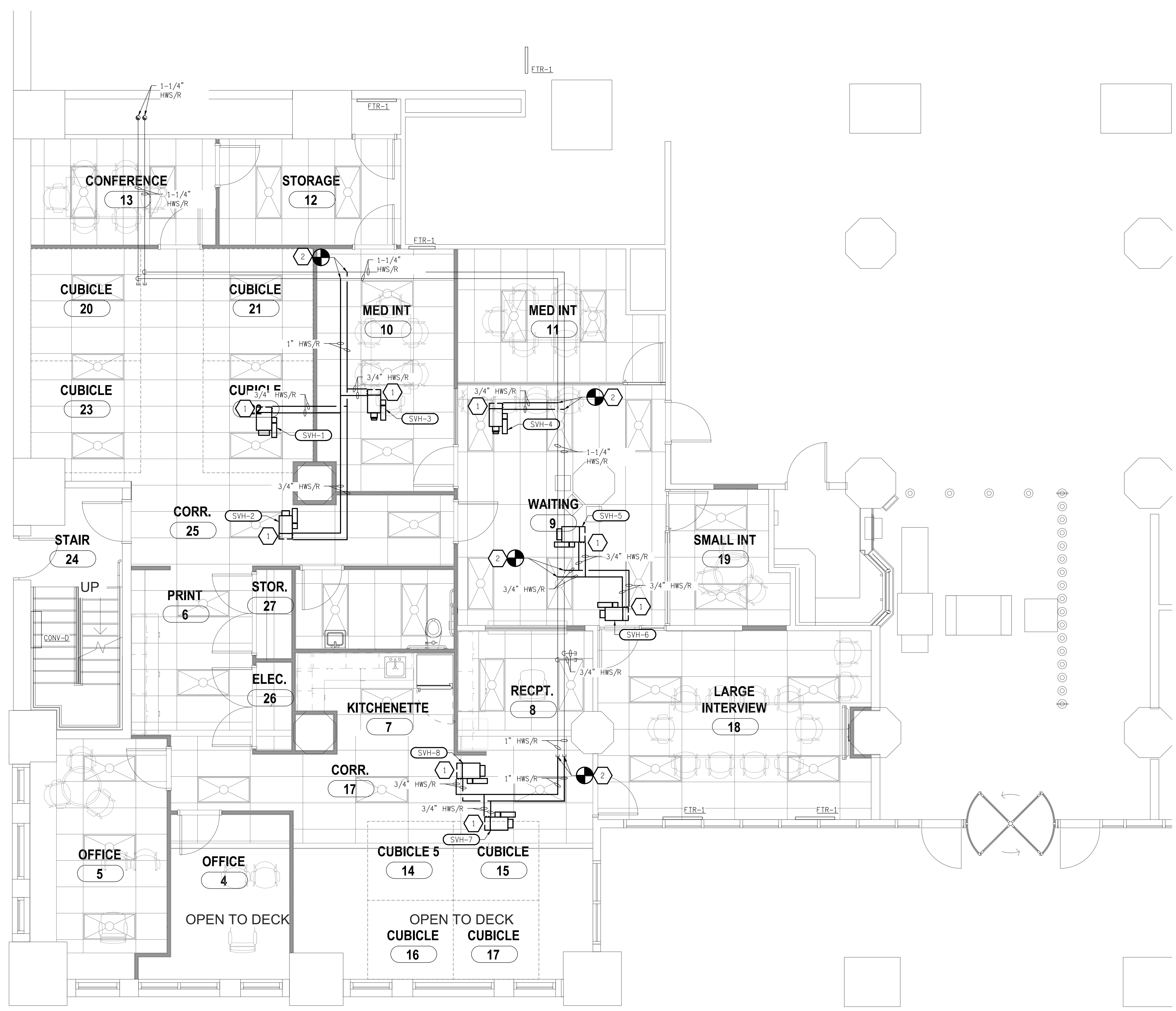
PROJECT NO.
13600.097

PRELIMINARY DRAWING ONLY

NOT TO BE USED FOR CONSTRUCTION

DRAWING TITLE
MECHANICAL PIPING DEMOLITION PLAN FIRST FLOOR

SHEET NO.
M101

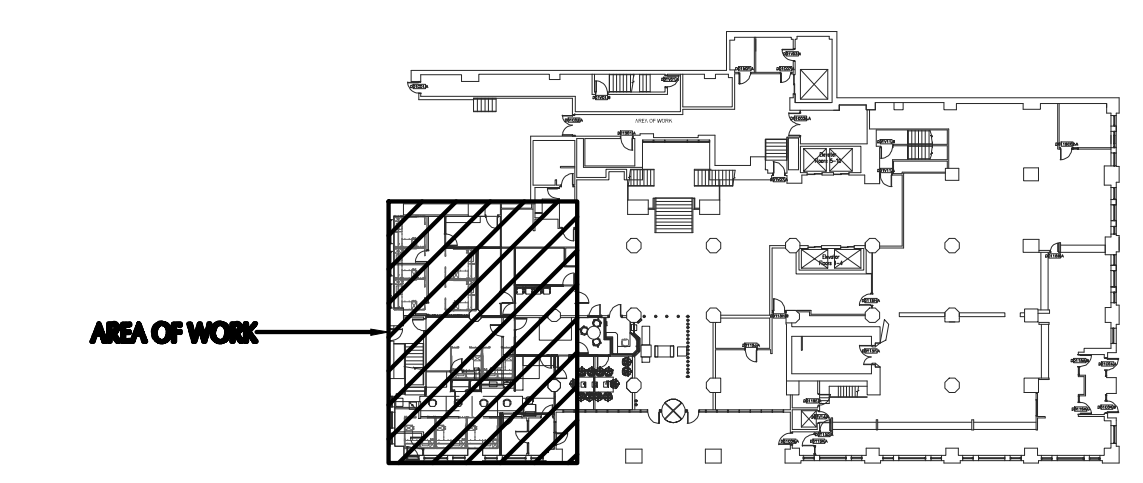


DRAWING NOTES
DRAWING M201

- 1 PROVIDE NEW HWS/HWR PIPING FROM MAIN TO UNIT. PROVIDE COIL TRIM AS DETAILED ON SHEET H500.
- 2 CONNECT TO EXISTING MAIN AT THIS LOCATION.

GENERAL NOTES
APPLIES TO ALL DRAWINGS OF THIS TRADE

- A FOR KEY PLAN AND DRAWING INDEX SEE DRAWING ARCHITECTURAL DRAWING.
- B FIELD VERIFY ALL SIZES, DIMENSIONS, LOCATIONS, ETC PRIOR TO INITIATION OF CONSTRUCTION



PLAN - NEW WORK - FIRST FLOOR
SCALE: 1/4" = 1'-0"

KEY PLAN



720 E Pete Rose Way, Suite 140
Cincinnati, OH 45202
T 513.241.4474 F 513.241.0081
thinkchamplin.com

THINK CREATE REALIZE



TPC SHERIFF REENTRY EXPANSION 2024

138 EAST COURT STREET,
CINCINNATI, OH 45202
ITB 082-24

ISSUANCES

| DATE | NO. | ITEM |
|----------|-----|-------------------|
| 04/25/24 | A | ISSUED FOR REVIEW |
| 08/14/24 | B | ISSUED FOR REVIEW |
| 09/16/24 | C | ISSUED FOR BID |

| | |
|--------------------------|---|
| DRAWN BY TAB | PRELIMINARY DRAWING ONLY |
| CHECKED BY TTC | |
| CLIENT NO. | |
| PROJECT NO. 13600.097 | |

**MECHANICAL
NEW WORK PLAN
FIRST FLOOR**

SHEET NO.
M201