



Lennox National Accounts Project Submittal

Project Name: Barnes & Noble #2663 - Twin Falls, ID
Project Number: 866671
Project Altitude: 3743
Project Location:
1239A POLE LINE RD EAST
TWIN FALLS, Idaho US

Date: 6/2/2025
Quote: 582977A
Roof Top Units: 4
Split Systems: 0

Customer: Barnes & Noble Inc
Engineer: Pending Engineer
National Account: Barnes & Noble Inc

Table of Contents

Tag	Qty	Model	Description
<u>RTU 1,3</u>	2	LGT120H5E	LGT120H5E-G 10T
<u>RTU 2</u>	1	LGT120H5E	LGT120H5E-G 10T
<u>RTU 4</u>	1	LGT092H5E	LGT092H5E-G 7.5T
<u>Miscellaneous Items</u>			

Revit® Building Information Modeling (BIM) - [Click here](#)

AutoCAD® Templates - [Click here](#)



Lennox National Accounts Project Submittal

Tag: RTU 1,3
Model: LGT120H5E - LGT120H5E-G 10T

UNIT OVERVIEW

Voltage	IEER EER	MCA/MOCP (amp)	Gross Cooling Ttl/Sens (MBH)	Net Cooling Ttl/Sens (MBH)	Supply Air Flow (cfm)	ESP/TSP (in.WC)	EAT DB/WB (°F)	LAT DB/WB (°F)
460V 3Ph 60Hz	16.1 12.1	25 / 30	122.6 / 89.5	116.0 / 83.0	4,000	0.50 / 1.08	80.0 / 67.0	55.6 / 55.6

COOLING

Cooling Performance		Temperatures (DB/WB °F)	
Gross Cooling (Ttl/Sens)	122.6 / 89.5 MBH	Ambient	95.0
Net Cooling (Ttl/Sens)	116.0 / 83.0 MBH	Entering	80.0 67.0
Coil Moisture Removal	31.19 lb/hr	Total Leaving – (Coil)	55.6 55.6
System Moisture Removal	31.19 lb/hr	Total Leaving – (Unit)	57.4 57.0

ARI Performance		Compressors		Refrigerant		Condensate Drain	
ARI Cooling	121.0 / 118.0 MBH	Cooling Stages	3.0	Type	R-454B	Qty	1
ARI Power	9,900 W	Compressor Qty	2	Charge	11 LBS. 12 OZ.	Size	1 in.
		Compressor RLA	14 amp			Pipe Thread	npt

HEATING

Heating Performance		Temperatures (DB/WB °F)		Specifications	
Output (High/Low)	144.0 / 93.6 MBH	Total Leaving	33.3	Heat Stages	2
Input (High/Low)	180.0 / 117.0 MBH			Thermal Efficiency	81.0%
Gas Heat Rise	33.3 °F			Gas Line Size	0.75 in.
				Gas Pressure	7 in.WC

VENTILATION

Air Flow (cfm)		Supply Fan		Air Resistance (in.WC)	
Supply	4,000	Nominal Power	3.75 hp	Total	1.08
		Required Power	2.05 hp	Ext Supply	0.50
		Drive Type	ECM Direct Drive		
		Required Watts	1,526 W		
		Exh Fan Nom HP	0.33 hp		

AIR RESISTANCE - OPTIONS/ACCESSORIES (in.WC)

Wet Coil	Humiditrol	Heat	Economizer	Filters	Diffuser	Exhaust	ERW
0.14		0.21	0.19	0.04			

ELECTRICAL

Voltage	460V 3Ph / 60Hz	Compressor RLA	14.0 amp
MCA	25 amp	Condenser FLA	3.0 amp
MOCP	30 amp	Supply Fan FLA	4.3 amp
Oper Range-Nom Volt	+/- 10%	Exh Fan Mtr FLACooling FLA	1.3 amp/22.6 amp
		Total	

ADDITIONAL DATA

Cabinet	101.25 in. x 60.12 in. x 46.88 in.	Total Weight	1,226 lb
Downflow Supply	20.0 in. x 28.0 in.	Base Unit Net Weight	1,100 lb
Downflow Return	24.0 in. x 27.0 in.	OAS/Econ Weight	86 lb
Filters	(4) 20.0 in. x 25.0 in. x 2.0 in.	Exhaust Weight	31 lb
Sound Rating	89 dBA	Gas Heat Weight	9 lb



Lennox National Accounts Project Submittal

Tag: RTU 1,3

Factory Installed Options

High Performance Economizer Factory Installed
 Single Enthalpy High Performance Economizer
 Direct Drive
 Unit Orientation Downflow
 Supply Fan: Multi-Speed ECM Direct Drive
 440V/460V/480V 3Phase
 80Amp Non-Fused Disconnect Factory Installed
 Built-in BACnet IP and MS/TP (standard)
 Refrigerant R-454B
 Supply Motor - 3.75 Hp - DirectPlus w/MSAV
 Std Static Power Exhaust Fan Factory Installed
 180K A.S. (Dual Stage)
 Hinged Access Doors Factory Installed
 15A GFCI Factory Installed/Field Wired
 Supply Air Smoke Detector Factory Installed
 Return Air Smoke Detector Factory Installed
 Environ Condenser Coil System Factory Installed
 2" MERV8 - Filter Factory installed

Field Installed Accessories

Catalog Number	Qty	Description
23V86	2	CO2 Sensors - Wall-mount, white plastic cover, no display Field Installed
Y3027	2	BE RTS2-AOS Multi Signal Accessory

Product Features

Cabinet

Hinged Access Panels
 Durable Outdoor Enamel Paint Finish
 Totally Enclosed Outdoor Fan Motor
 PVC Coated Fan Guard
 Corrosion-Resistant Removable, Reversible Drain Pan
 Isolated Compressor Compartment

Cooling System

Scroll Compressor
 Expansion Valves
 High Capacity Driers
 Crankcase Heater
 System can operate from 0°F to 125°F without any additional controls
 Pre-charged Refrigeration System
 Timed Off Control
 Internal Pressure Relief Valve

Heating System

Redundant Automatic Gas Valve with Manual Shut-off
 Electronic Flame Sensor
 Direct Spark Ignition
 Inshot Burners
 AGA-CGA Certified
 If configured for room sensor control, additional staging may be possible. Refer to performance tables within the EHB

Control System

Fan and Limit Controls
 Overload Protection
 Microprocessor Controls – Lennox® CORE Control System
 Auto reset high & low pressure switch with strike 3 lockout feature in Lennox® CORE Control System
 Built-in BACnet IP & MS/TP
 Phase/Voltage Detection
 Return Air Sensor Factory Installed
 Outdoor Air Sensor Factory Installed
 Factory Installed Discharge Air Sensor
 Refrigerant Detection System (RDS) and mitigation response, per UL safety standard 60335-2-40



Lennox National Accounts Project Submittal

Compliance

Components are Bonded for Grounding

Factory Test Operated

All models are ASHRAE 90.1 energy efficiency compliant and meet or exceed requirements of Section 6.8

All models meet DOE 2023 energy efficiency standards

All models are compliant with and listed to UL standard 60335-2-40

Model meets California Code of Regulations, Title 24 and ASHRAE 90.1-2016 Section 6.4.3.10 requirements for staged airflow

Model meets HCAI (formerly OSHPD) OSP and Special Seismic Certification (Number: OSP-0596) and meet 2018 International Building Code (IBC), 2019

California Building Code (CBC) ASCE 7, and ICC-ES AC156

ISO 9001 Registered Manufacturing Quality System

Only refrigerants in compliance with New York State regulations can be used in the state of New York

Warranty

Limited warranty on aluminized heat exchanger of 10 years

Limited warranty on compressor of 5 years

Limited warranty on Environ Coil System of 3 years

Limited warranty on High Performance Economizer of 5 years

Limited warranty on all other components of 1 year

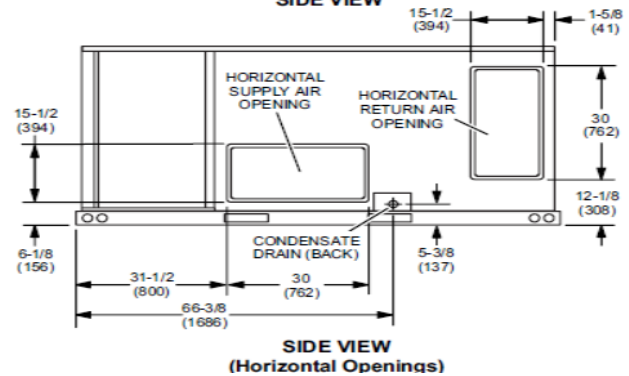
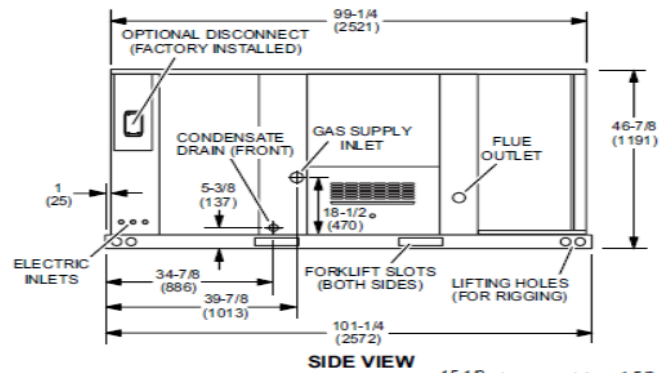
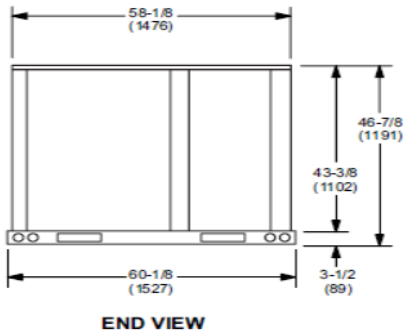
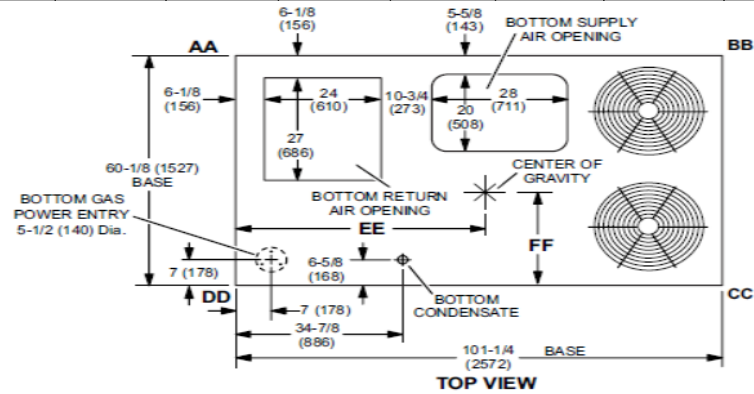
Limited warranty on Lennox® CORE Control System of 3 years

See Limited Warranty Certificate included with unit for details

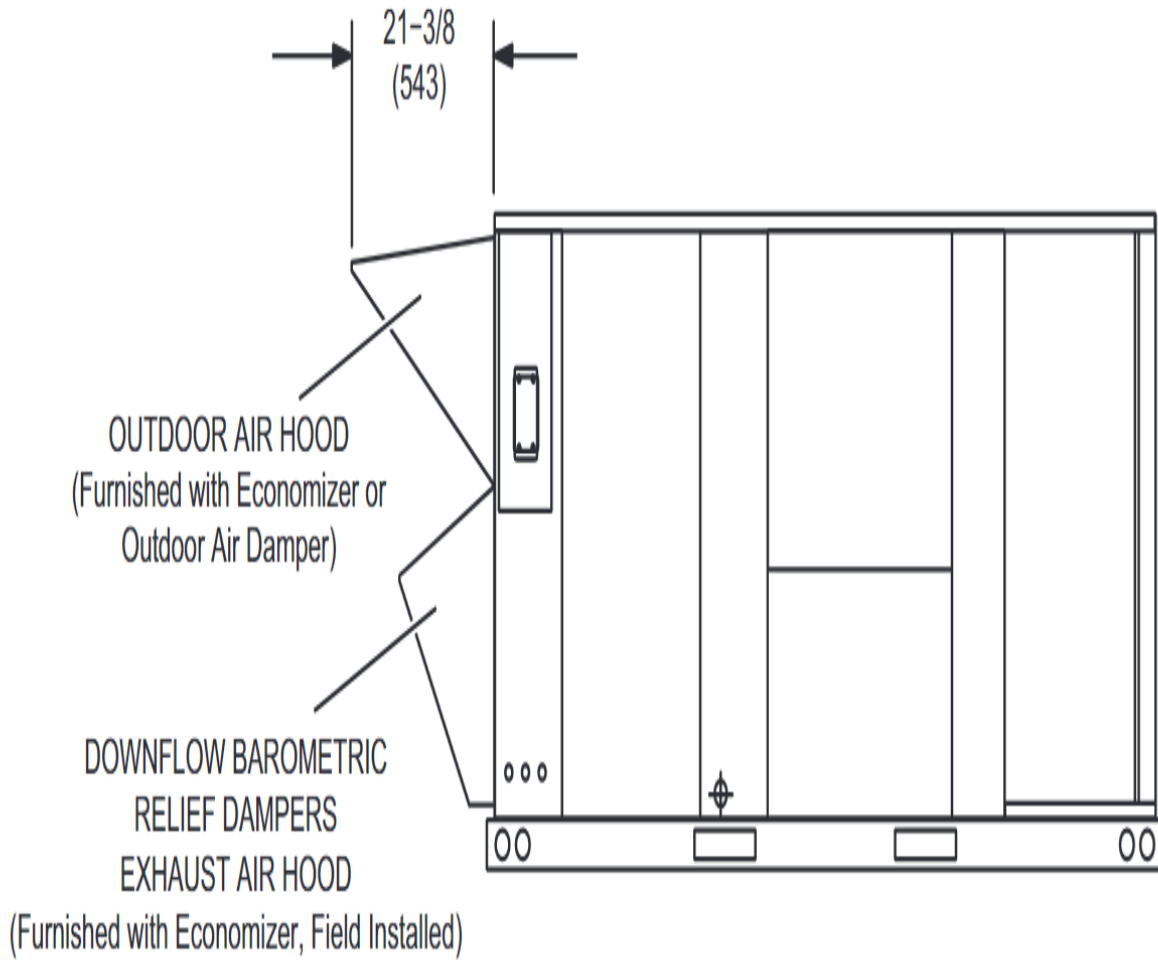


Lennox National Accounts Project Submittal

Corner Weights (lb)						Center of Gravity (in.)					
AA		BB		CC		DD		EE		FF	
Base	Max	Base	Max	Base	Max	Base	Max	Base	Max	Base	Max
306	349	275	305	295	326	334	382	46.50	45.50	24.50	25.50



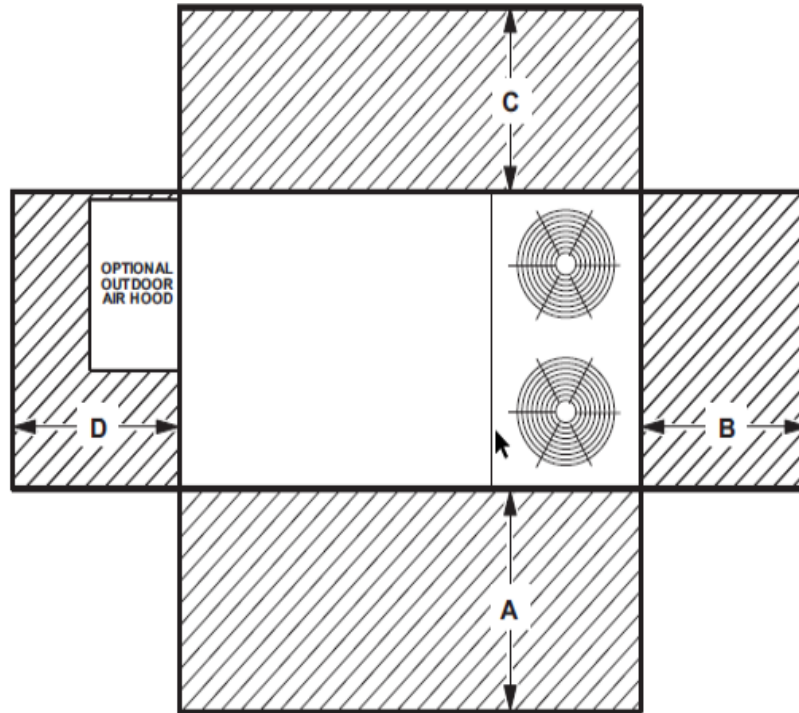
OUTDOOR AIR HOOD DETAIL





Lennox National Accounts Project Submittal

UNIT CLEARANCES



¹ Unit Clearance	A		B		C		D		Top Clearance
	in.	mm	in.	mm	in.	mm	in.	mm	
Service Clearance	60	1524	36	914	36	934	60	1524	Unobstructed
Clearance to Combustibles	36	914	1	25	1	25	1	25	
Minimum Operation Clearance	36	914	36	914	36	914	36	914	

NOTE - Entire perimeter of unit base requires support when elevated above the mounting surface.

¹ Service Clearance - Required for removal of serviceable parts.

Clearance to Combustibles - Required clearance to combustible material.

Minimum Operation Clearance - Required clearance for proper unit operation.



Lennox National Accounts Project Submittal

Tag: RTU 2
 Model: LGT120H5E - LGT120H5E-G 10T

UNIT OVERVIEW

Voltage	IEER EER	MCA/MOCP (amp)	Gross Cooling Ttl/Sens (MBH)	Net Cooling Ttl/Sens (MBH)	Supply Air Flow (cfm)	ESP/TSP (in.WC)	EAT DB/WB (°F)	LAT DB/WB (°F)
460V 3Ph 60Hz	16.1 12.1	25 / 30	122.6 / 89.5	116.0 / 83.0	4,000	0.50 / 1.13	80.0 / 67.0	55.6 / 55.6

COOLING

Cooling Performance		Temperatures (DB/WB °F)	
Gross Cooling (Ttl/Sens)	122.6 / 89.5 MBH	Ambient	95.0
Net Cooling (Ttl/Sens)	116.0 / 83.0 MBH	Entering	80.0 67.0
Coil Moisture Removal	31.19 lb/hr	Total Leaving – (Coil)	55.6 55.6
System Moisture Removal	31.19 lb/hr	Total Leaving – (Unit)	57.4 57.0

ARI Performance		Compressors		Refrigerant		Condensate Drain	
ARI Cooling	121.0 / 118.0 MBH	Cooling Stages	3.0	Type	R-454B	Qty	1
ARI Power	9,900 W	Compressor Qty	2	Charge	12 LBS. 2 OZ.	Size	1 in.
		Compressor RLA	14 amp			Pipe Thread	npt

HUMIDITROL - HOT GAS REHEAT

Humiditrol Dehumidification Performance		Temperatures (DB/WB °F)	
Gross Cooling - Stage 1(Ttl/Sens)	22.8 / 10.7 MBH	Ambient	95.0
Gross Cooling - Stage 2 (Ttl/Sens)	70.6 / 38.1 MBH	Entering	80.0 67.0
Moisture Removal - Stage 1	11.4 lb/hr	Total Leaving – (Stage 1)	77.1 65.2
Moisture Removal - Stage 2	30.6 lb/hr	Total Leaving – (Stage 2)	69.7 61.3

HEATING

Heating Performance		Temperatures (DB/WB °F)		Specifications	
Output (High/Low)	144.0 / 93.6 MBH	Total Leaving	33.3	Heat Stages	2
Input (High/Low)	180.0 / 117.0 MBH			Thermal Efficiency	81.0%
Gas Heat Rise	33.3 °F			Gas Line Size	0.75 in.
				Gas Pressure	7 in.WC

VENTILATION

Air Flow (cfm)		Supply Fan		Air Resistance (in.WC)	
Supply	4,000	Nominal Power	3.75 hp	Total	1.13
		Required Power	2.05 hp	Ext Supply	0.50
		Drive Type	ECM Direct Drive		
		Required Watts	1,526 W		
		Exh Fan Nom HP	0.33 hp		

AIR RESISTANCE - OPTIONS/ACCESSORIES (in.WC)

Wet Coil	Humiditrol	Heat	Economizer	Filters	Diffuser	Exhaust	ERW
0.14	0.05	0.21	0.19	0.04			

ELECTRICAL

Voltage	460V 3Ph / 60Hz	Compressor RLA	14.0 amp
MCA	25 amp	Condenser FLA	3.0 amp
MOCP	30 amp	Supply Fan FLA	4.3 amp
Oper Range-Nom Volt	+/- 10%	Exh Fan Mtr FLACooling FLA	1.3 amp22.6 amp
		Total	

ADDITIONAL DATA

Cabinet	101.25 in. x 60.12 in. x 46.88 in.	Total Weight	1,246 lb
Downflow Supply	20.0 in. x 28.0 in.	Base Unit Net Weight	1,100 lb
Downflow Return	24.0 in. x 27.0 in.	OAS/Econ Weight	86 lb
Filters	(4) 20.0 in. x 25.0 in. x 2.0 in.	Exhaust Weight	31 lb
Sound Rating	89 dBA	Humiditrol Weight	20 lb
		Gas Heat Weight	9 lb





Lennox National Accounts Project Submittal

Tag: RTU 2

Factory Installed Options

High Performance Economizer Factory Installed
 Single Enthalpy High Performance Economizer
 Direct Drive
 Unit Orientation Downflow
 Supply Fan: Multi-Speed ECM Direct Drive
 440V/460V/480V 3Phase
 80Amp Non-Fused Disconnect Factory Installed
 Built-in BACnet IP and MS/TP (standard)
 Refrigerant R-454B
 Supply Motor - 3.75 Hp - DirectPlus w/MSAV
 Std Static Power Exhaust Fan Factory Installed
 180K A.S. (Dual Stage)
 Hinged Access Doors Factory Installed
 15A GFCI Factory Installed/Field Wired
 Supply Air Smoke Detector Factory Installed
 Return Air Smoke Detector Factory Installed
 Environ Condenser Coil System Factory Installed
 Humiditrol Factory Installed
 2" MERV8 - Filter Factory installed

Field Installed Accessories

Catalog Number	Qty	Description
17M50	1	Humidity Sensor Kit Field Installed
23V86	1	CO2 Sensors - Wall-mount, white plastic cover, no display Field Installed
Y3027	1	BE RTS2-AOS Multi Signal Accessory

Product Features

Cabinet

Hinged Access Panels
 Durable Outdoor Enamel Paint Finish
 Totally Enclosed Outdoor Fan Motor
 PVC Coated Fan Guard
 Corrosion-Resistant Removable, Reversible Drain Pan
 Isolated Compressor Compartment

Cooling System

Scroll Compressor
 Expansion Valves
 High Capacity Driers
 Crankcase Heater
 System can operate from 0°F to 125°F without any additional controls
 Pre-charged Refrigeration System
 Timed Off Control
 Internal Pressure Relief Valve
 Humiditrol - Hot Gas Reheat Dehumidification System

Heating System

Redundant Automatic Gas Valve with Manual Shut-off
 Electronic Flame Sensor
 Direct Spark Ignition
 Inshot Burners
 AGA-CGA Certified
 If configured for room sensor control, additional staging may be possible. Refer to performance tables within the EHB

Control System

Fan and Limit Controls
 Overload Protection
 Microprocessor Controls – Lennox® CORE Control System
 Auto reset high & low pressure switch with strike 3 lockout feature in Lennox® CORE Control System
 Built-in BACnet IP & MS/TP
 Phase/Voltage Detection
 Return Air Sensor Factory Installed



Lennox National Accounts Project Submittal

Outdoor Air Sensor Factory Installed
Factory Installed Discharge Air Sensor
Refrigerant Detection System (RDS) and mitigation response, per UL safety standard 60335-2-40

Compliance

Components are Bonded for Grounding
Factory Test Operated
All models are ASHRAE 90.1 energy efficiency compliant and meet or exceed requirements of Section 6.8
All models meet DOE 2023 energy efficiency standards
All models are compliant with and listed to UL standard 60335-2-40

Model meets California Code of Regulations, Title 24 and ASHRAE 90.1-2016 Section 6.4.3.10 requirements for staged airflow
Model meets HCAI (formerly OSHPD) OSP and Special Seismic Certification (Number: OSP-0596) and meet 2018 International Building Code (IBC), 2019 California Building Code (CBC) ASCE 7, and ICC-ES AC156
ISO 9001 Registered Manufacturing Quality System
Only refrigerants in compliance with New York State regulations can be used in the state of New York

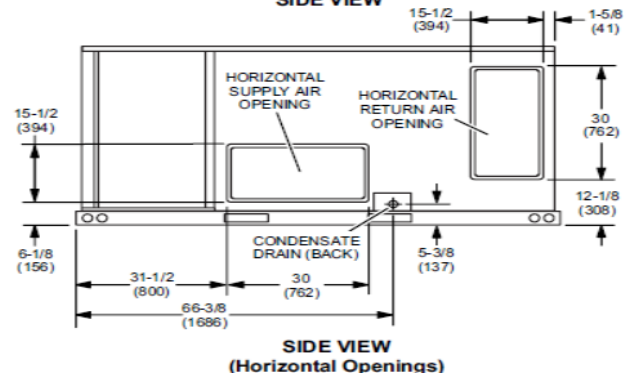
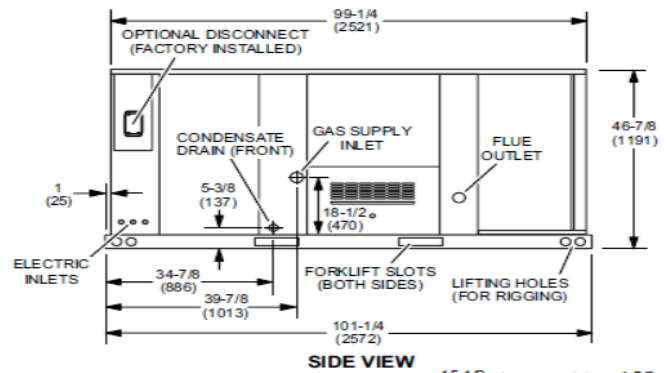
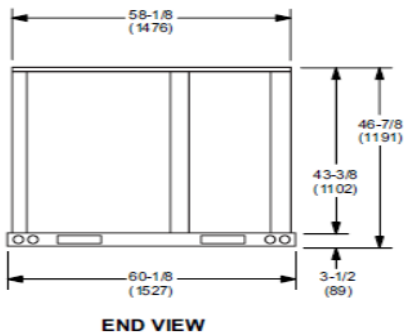
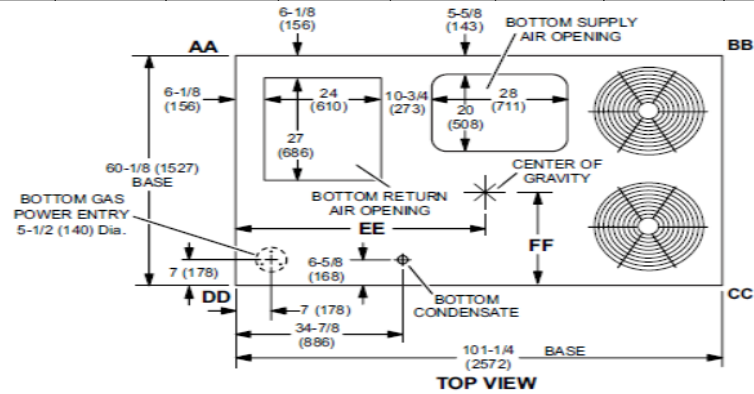
Warranty

Limited warranty on aluminized heat exchanger of 10 years
Limited warranty on compressor of 5 years
Limited warranty on Environ Coil System of 3 years
Limited warranty on High Performance Economizer of 5 years
Limited warranty on all other components of 1 year
Limited warranty on Lennox® CORE Control System of 3 years
See Limited Warranty Certificate included with unit for details

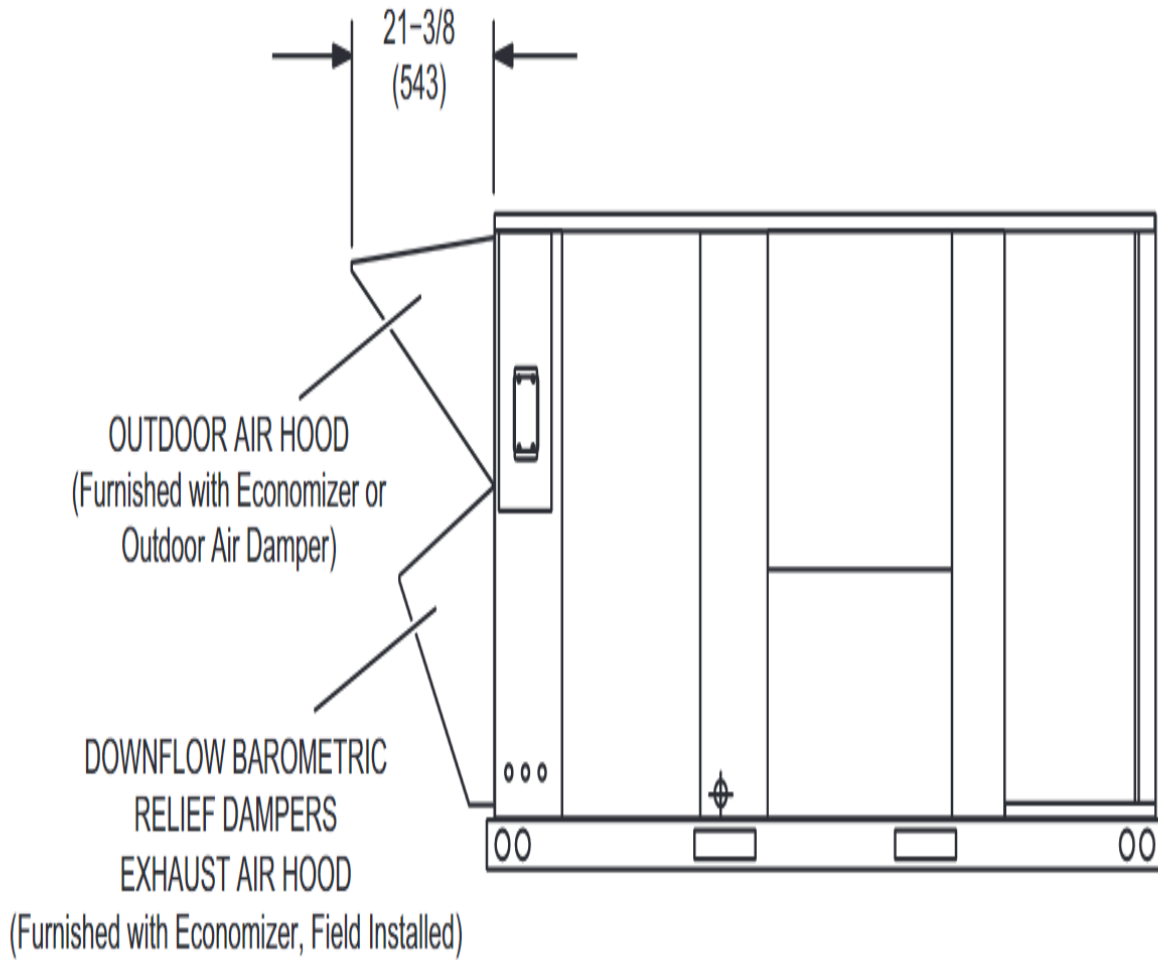


Lennox National Accounts Project Submittal

Corner Weights (lb)						Center of Gravity (in.)					
AA		BB		CC		DD		EE		FF	
Base	Max	Base	Max	Base	Max	Base	Max	Base	Max	Base	Max
306	349	275	305	295	326	334	382	46.50	45.50	24.50	25.50



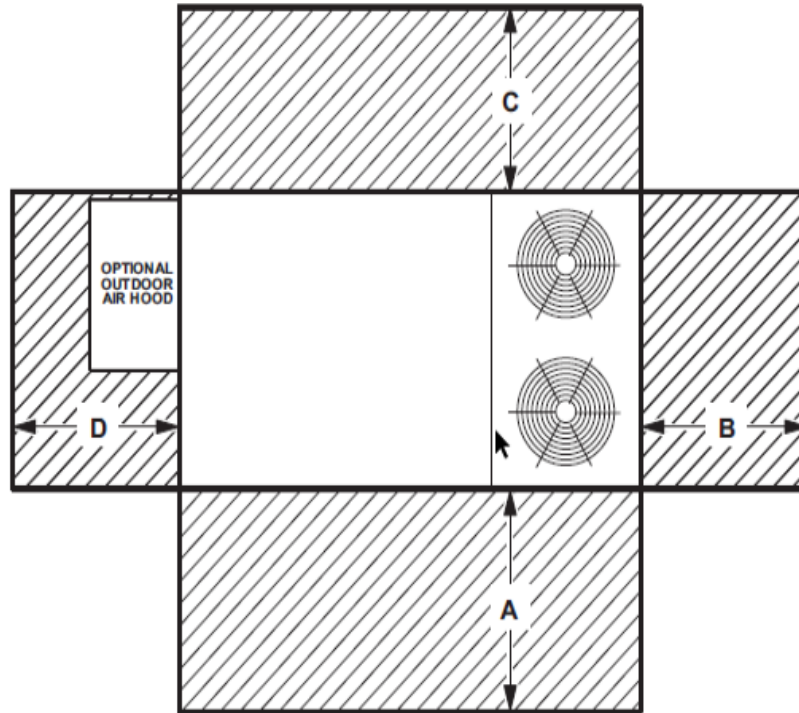
OUTDOOR AIR HOOD DETAIL





Lennox National Accounts Project Submittal

UNIT CLEARANCES



¹ Unit Clearance	A		B		C		D		Top Clearance
	in.	mm	in.	mm	in.	mm	in.	mm	
Service Clearance	60	1524	36	914	36	934	60	1524	Unobstructed
Clearance to Combustibles	36	914	1	25	1	25	1	25	
Minimum Operation Clearance	36	914	36	914	36	914	36	914	

NOTE - Entire perimeter of unit base requires support when elevated above the mounting surface.

¹ Service Clearance - Required for removal of serviceable parts.

Clearance to Combustibles - Required clearance to combustible material.

Minimum Operation Clearance - Required clearance for proper unit operation.



Lennox National Accounts Project Submittal

Tag: RTU 4
Model: LGT092H5E - LGT092H5E-G 7.5T

UNIT OVERVIEW

Voltage	IEER EER	MCA/MOCP (amp)	Gross Cooling Ttl/Sens (MBH)	Net Cooling Ttl/Sens (MBH)	Supply Air Flow (cfm)	ESP/TSP (in.WC)	EAT DB/WB (°F)	LAT DB/WB (°F)
460V 3Ph 60Hz	16.1 12.3	22 / 25	92.3 / 66.5	88.7 / 62.9	3,000	0.50 / 0.87	80.0 / 67.0	55.8 / 55.8

COOLING

Cooling Performance		Temperatures (DB/WB °F)	
Gross Cooling (Ttl/Sens)	92.3 / 66.5 MBH	Ambient	95.0
Net Cooling (Ttl/Sens)	88.7 / 62.9 MBH	Entering	80.0 67.0
Coil Moisture Removal	24.37 lb/hr	Total Leaving – (Coil)	55.8 55.8
System Moisture Removal	24.37 lb/hr	Total Leaving – (Unit)	57.2 56.8

ARI Performance		Compressors		Refrigerant		Condensate Drain	
ARI Cooling	94.0 / 92.0 MBH	Cooling Stages	3.0	Type	R-454B	Qty	1
ARI Power	7,600 W	Compressor Qty	2	Charge	12 LBS. 2 OZ.	Size	1 in.
		Compressor RLA	13.2 amp			Pipe Thread	npt

HEATING

Heating Performance		Temperatures (DB/WB °F)		Specifications	
Output (High/Low)	144.0 / 93.6 MBH	Total Leaving	44.4	Heat Stages	2
Input (High/Low)	180.0 / 117.0 MBH			Thermal Efficiency	81.0%
Gas Heat Rise	44.4 °F			Gas Line Size	0.75 in.
				Gas Pressure	7 in.WC

VENTILATION

Air Flow (cfm)		Supply Fan		Air Resistance (in.WC)	
Supply	3,000	Nominal Power	3.75 hp	Total	0.87
		Required Power	1.13 hp	Ext Supply	0.50
		Drive Type	ECM Direct Drive		
		Required Watts	841 W		
		Exh Fan Nom HP	0.33 hp		

AIR RESISTANCE - OPTIONS/ACCESSORIES (in.WC)

Wet Coil	Humiditrol	Heat	Economizer	Filters	Diffuser	Exhaust	ERW
0.10		0.12	0.13	0.02			

ELECTRICAL

Voltage	460V 3Ph / 60Hz	Compressor RLA	13.2 amp
MCA	22 amp	Condenser FLA	2.6 amp
MOCP	25 amp	Supply Fan FLA	4.3 amp
Oper Range-Nom Volt	+/- 10%	Exh Fan Mtr FLACooling FLA	1.3 amp/21.4 amp
		Total	

ADDITIONAL DATA

Cabinet	101.25 in. x 60.12 in. x 46.88 in.	Total Weight	1,191 lb
Downflow Supply	20.0 in. x 28.0 in.	Base Unit Net Weight	1,088 lb
Downflow Return	24.0 in. x 27.0 in.	OAS/Econ Weight	86 lb
Filters	(4) 20.0 in. x 25.0 in. x 2.0 in.	Exhaust Weight	8 lb
Sound Rating	88 dBA	Gas Heat Weight	9 lb



Lennox National Accounts Project Submittal

Tag: RTU 4

Factory Installed Options

High Performance Economizer Factory Installed
 Single Enthalpy High Performance Economizer
 Direct Drive
 Unit Orientation Downflow
 Supply Fan: Multi-Speed ECM Direct Drive
 440V/460V/480V 3Phase
 80Amp Non-Fused Disconnect Factory Installed
 Built-in BACnet IP and MS/TP (standard)
 Refrigerant R-454B
 Supply Motor - 3.75 Hp - DirectPlus w/MSAV
 Barometric Relief Damper Factory Installed
 180K A.S. (Dual Stage)
 Hinged Access Doors Factory Installed
 15A GFCI Factory Installed/Field Wired
 Supply Air Smoke Detector Factory Installed
 Return Air Smoke Detector Factory Installed
 Environ Condenser Coil System Factory Installed
 2" MERV8 - Filter Factory installed

Field Installed Accessories

Catalog Number	Qty	Description
23V86	1	CO2 Sensors - Wall-mount, white plastic cover, no display Field Installed
Y3027	1	BE RTS2-AOS Multi Signal Accessory

Product Features

Cabinet

Hinged Access Panels
 Durable Outdoor Enamel Paint Finish
 Totally Enclosed Outdoor Fan Motor
 PVC Coated Fan Guard
 Corrosion-Resistant Removable, Reversible Drain Pan
 Isolated Compressor Compartment

Cooling System

Scroll Compressor
 Expansion Valves
 High Capacity Driers
 Crankcase Heater
 System can operate from 0°F to 125°F without any additional controls
 Pre-charged Refrigeration System
 Timed Off Control
 Internal Pressure Relief Valve

Heating System

Redundant Automatic Gas Valve with Manual Shut-off
 Electronic Flame Sensor
 Direct Spark Ignition
 Inshot Burners
 AGA-CGA Certified
 If configured for room sensor control, additional staging may be possible. Refer to performance tables within the EHB

Control System

Fan and Limit Controls
 Overload Protection
 Microprocessor Controls – Lennox® CORE Control System
 Auto reset high & low pressure switch with strike 3 lockout feature in Lennox® CORE Control System
 Built-in BACnet IP & MS/TP
 Phase/Voltage Detection
 Return Air Sensor Factory Installed
 Outdoor Air Sensor Factory Installed
 Factory Installed Discharge Air Sensor
 Refrigerant Detection System (RDS) and mitigation response, per UL safety standard 60335-2-40



Lennox National Accounts Project Submittal

Compliance

Components are Bonded for Grounding

Factory Test Operated

All models are ASHRAE 90.1 energy efficiency compliant and meet or exceed requirements of Section 6.8

All models meet DOE 2023 energy efficiency standards

All models are compliant with and listed to UL standard 60335-2-40

Model meets California Code of Regulations, Title 24 and ASHRAE 90.1-2016 Section 6.4.3.10 requirements for staged airflow

Model meets HCAI (formerly OSHPD) OSP and Special Seismic Certification (Number: OSP-0596) and meet 2018 International Building Code (IBC), 2019

California Building Code (CBC) ASCE 7, and ICC-ES AC156

ISO 9001 Registered Manufacturing Quality System

Only refrigerants in compliance with New York State regulations can be used in the state of New York

Warranty

Limited warranty on aluminized heat exchanger of 10 years

Limited warranty on compressor of 5 years

Limited warranty on Environ Coil System of 3 years

Limited warranty on High Performance Economizer of 5 years

Limited warranty on all other components of 1 year

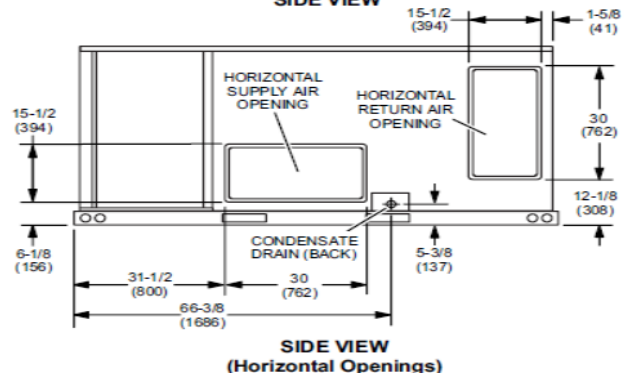
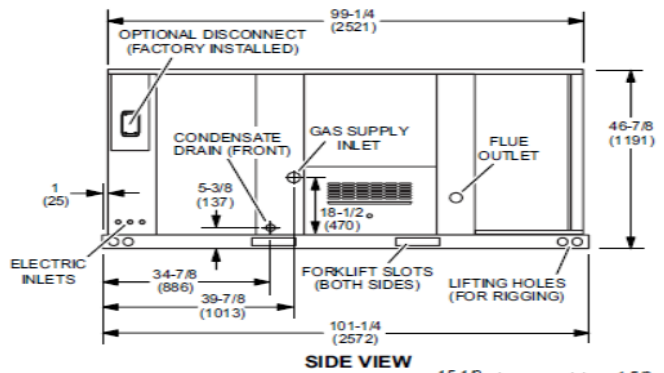
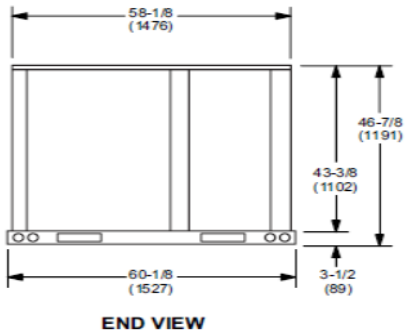
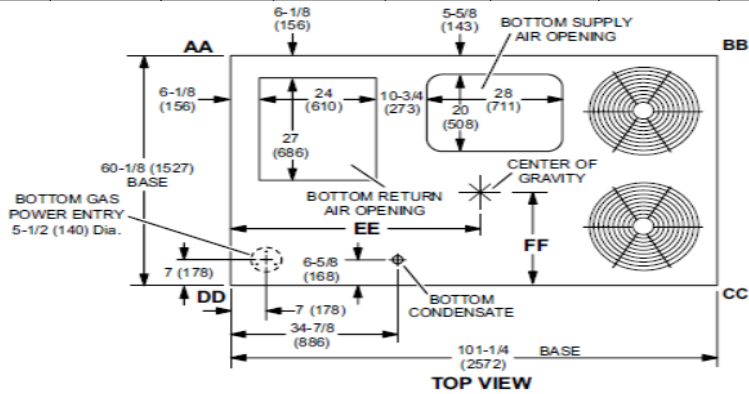
Limited warranty on Lennox® CORE Control System of 3 years

See Limited Warranty Certificate included with unit for details

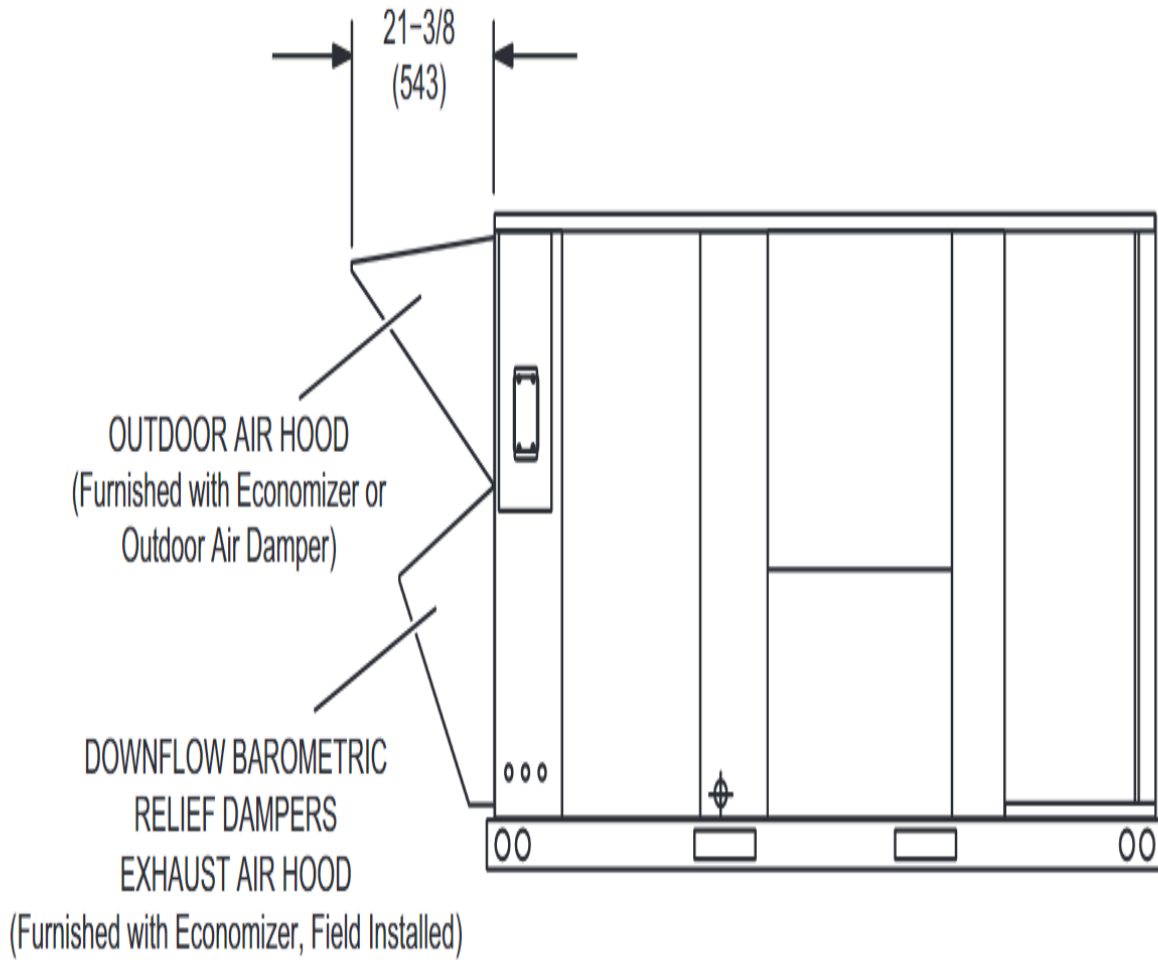


Lennox National Accounts Project Submittal

Corner Weights (lb)						Center of Gravity (in.)					
AA		BB		CC		DD		EE		FF	
Base	Max	Base	Max	Base	Max	Base	Max	Base	Max	Base	Max
293	338	263	295	286	316	326	370	46.50	45.50	24.50	25.50



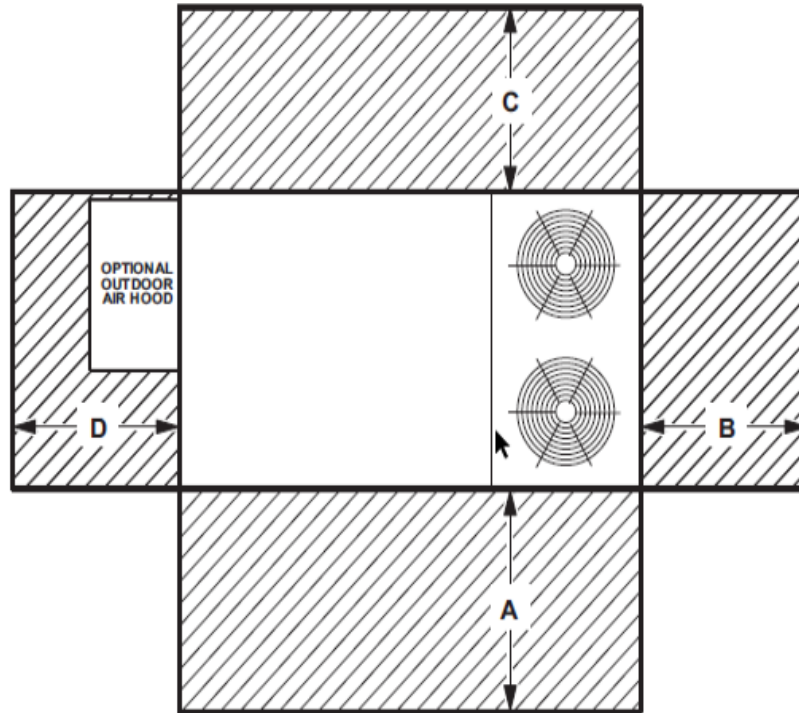
OUTDOOR AIR HOOD DETAIL





Lennox National Accounts Project Submittal

UNIT CLEARANCES



¹ Unit Clearance	A		B		C		D		Top Clearance
	in.	mm	in.	mm	in.	mm	in.	mm	
Service Clearance	60	1524	36	914	36	934	60	1524	Unobstructed
Clearance to Combustibles	36	914	1	25	1	25	1	25	
Minimum Operation Clearance	36	914	36	914	36	914	36	914	

NOTE - Entire perimeter of unit base requires support when elevated above the mounting surface.

¹ Service Clearance - Required for removal of serviceable parts.

Clearance to Combustibles - Required clearance to combustible material.

Minimum Operation Clearance - Required clearance for proper unit operation.



Lennox National Accounts Project Submittal

Tag: Miscellaneous Items

Miscellaneous Items

Tag	Catalog Number	Qty	Description
Curb Adapter RTU 1,2,3,4	COMSD	1	Curbs Plus Curb Adapters