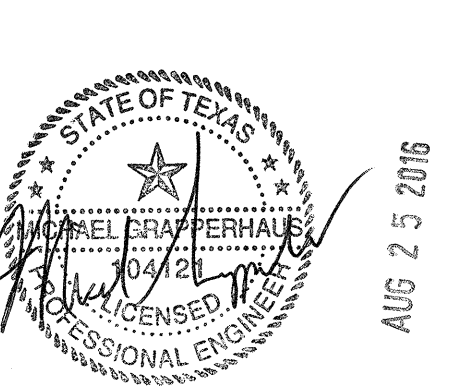


10877 WATSON ROAD
ST. LOUIS, MO 63127
PROJECT MANAGERS

CASCO DIVERSIFIED CORPORATION
FIRM # F-11545
EXP. DATE 08/31/17

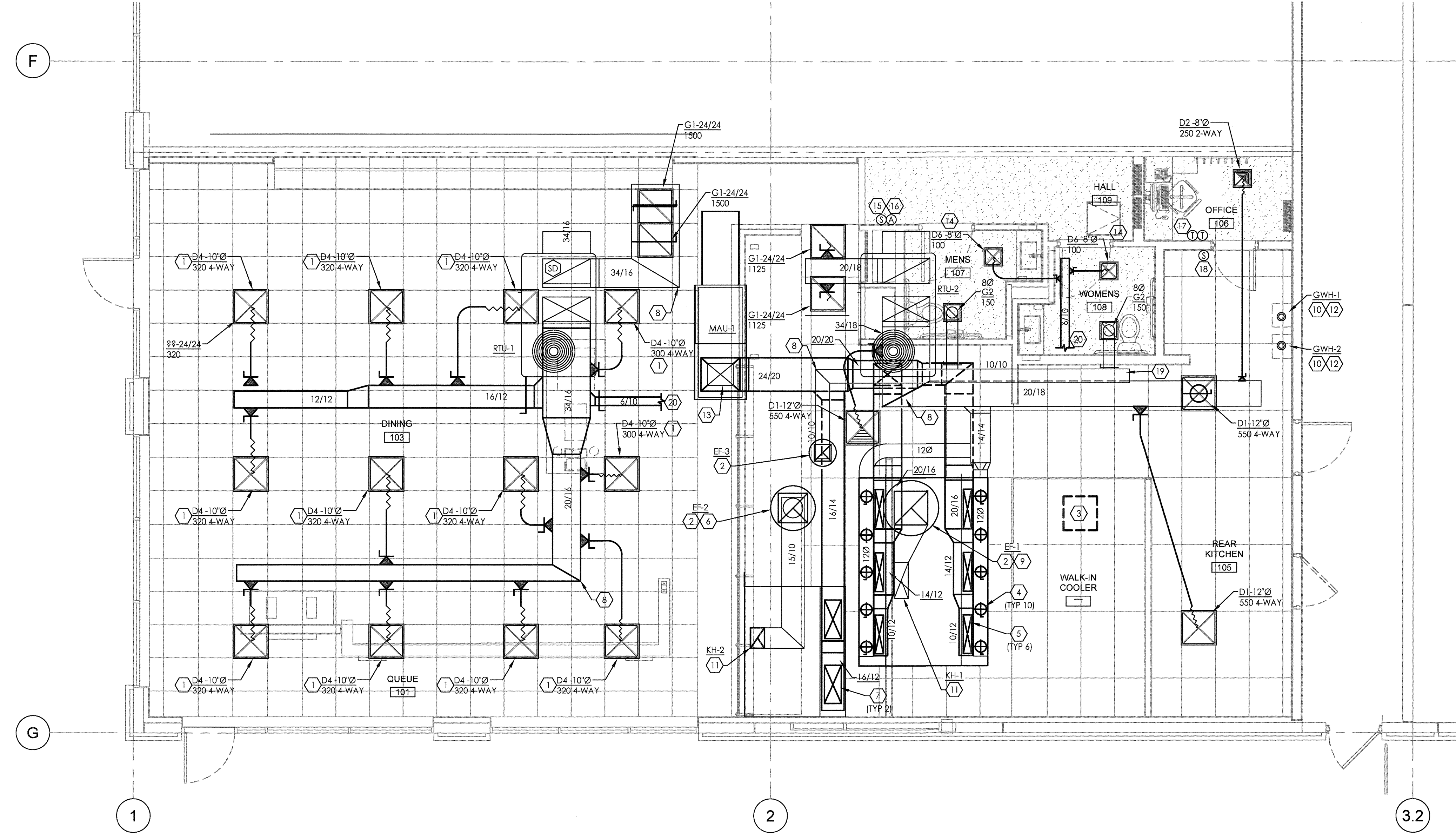


MICHAEL C. GRAPPERHAUS
LICENSE # 104121
EXP. DATE 08/31/17

COPYRIGHT 2014. ALL DRAWINGS AND SPECIFICATIONS SHALL REMAIN THE PROPERTY OF PIADA AND MAY NOT BE USED, DUPLICATED OR ALTERED WITHOUT THE WRITTEN CONSENT. CASCO CORPORATION RESERVES THE RIGHTS TO MAINTAIN COPIES OF THE DRAWINGS FOR REFERENCE.

CODED NOTES: #

1. ORDER DIFFUSER IN BLACK ENAMEL COLOR.
2. EXHAUST DUCT UP TO EXHAUST FAN ON ROOF. SEE SHEET M1.2 FOR CONTINUATION. TRANSITION AS REQUIRED AT FAN INLET.
3. WALK-IN COOLER EQUIPMENT SHOWN FOR REFERENCE ONLY. EQUIPMENT AND ASSOCIATED REFRIGERANT PIPING TO BE INSTALLED BY KEC.
4. PROVIDE VOLUME DAMPER AT EACH 8" X 28" DUCT DROP TO KH-1 AND BALANCE TO 110 CFM.
5. PROVIDE VOLUME DAMPER AT EACH 6" X 28" DUCT DROP TO KH-1 AND BALANCE TO 363 CFM.
6. 15"x10" EXHAUST DUCT TO KH-2 FROM EF-2. TRANSITION AS REQUIRED AT FAN INLET. REFER TO KITCHEN DRAWINGS AND SHEET M3.1 FOR FURTHER INFORMATION.
7. PROVIDE VOLUME DAMPER AT EACH 12" X 28" DUCT DROP TO KH-2 AND BALANCE TO 739 CFM.
8. ALL ELBOWS AND T'S TO BE PROVIDED WITH TURNING VANES.
9. 26"x10" EXHAUST DUCT TO KH-1 FROM EF-1. TRANSITION AS REQUIRED AT FAN INLET. REFER TO KITCHEN DRAWINGS AND SHEET M3.1 FOR FURTHER INFORMATION.
10. FLUE AND COMBUSTION AIR DUCTING, PROVIDE MANUFACTURER APPROVED MATERIAL AND ROUTING.
11. CUSTOM FABRICATED EXHAUST DUCT PROVIDED BY KITCHEN EQUIPMENT SUPPLIER UP TO EXHAUST FAN ON ROOF. DUCT SHALL BE OFFSET AS REQUIRED TO CONNECT TO BOTH THE EXHAUST FAN AND ITS ASSOCIATED HOOD. PROVIDE ACCESS PANELS WHERE CODE REQUIRES IN DUCTWORK.
12. WATER HEATER CONCENTRIC VENT THRU ROOF SEE P4.1 DETAIL#3 FOR MORE INFORMATION.
13. MAKE-UP AIR DUCT UP TO MAU-1 ON ROOF. TRANSITION AS REQUIRED AT UNIT.
14. 1" DOOR UNDERCUT, SEE ARCHITECTURAL DOOR SCHEDULE FOR MORE INFORMATION.
15. REMOTE TEMPERATURE SENSOR MOUNTED AT 48" AFF FOR RTU-1. WIRE BACK TO THERMOSTAT IN OFFICE.
16. PROVIDE AUDIOVISUAL REMOTE SMOKE DETECTOR ANNUNCIATOR WITH REMOTE KEY OPERATED RESET FOR SMOKE DETECTOR MOUNTED AT 48" AFF.
17. INSTALL LED TOUCHSCREEN (WITH CONTROLS LOCKED BY CODE) 24/7 PROGRAMMABLE THERMOSTAT MOUNTED AT 48" AFF. COORDINATE EXACT LOCATION WITH OWNER.
18. REMOTE TEMPERATURE SENSOR MOUNTED AT 48" AFF FOR RTU-2. WIRE BACK TO THERMOSTAT IN OFFICE.
19. ROUTE EXHAUST FAN EF-3 DUCTWORK IN JOIST SPACE AND THRU WEBBING AS NEEDED TO RESTROOMS.
20. ROUTE RESTROOM SUPPLY AIR DUCTWORK AS REQUIRED FROM MAIN TRUNK LINE TO ABOVE RESTROOM CEILING.



INTERIOR SEATS	EXTERIOR SEATS
60	0

PIADA
8942 S. BROADWAY AVE.
BUILDING R1-A, SUITE 140
TYLER, TEXAS 75703

FOR THE PIADA GROUP
1440 KING AVENUE, COLUMBUS, OHIO 43212

PROJECT NUMBER:	916562
DRAWN BY:	SAJ
CHECKED BY:	MCG
ISSUE	DATE
OWNER REVIEW	08.24.2016
LANDLORD REVIEW	08.24.2016
PERMIT / BID	08.24.2016

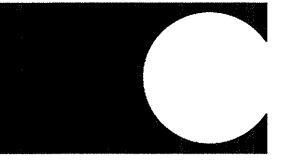
MECHANICAL FLOOR PLAN

SHEET:

M1.1

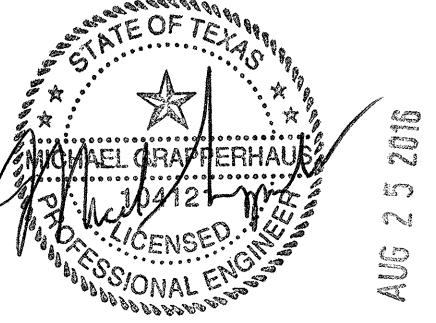
MECHANICAL FLOOR PLAN
1/4" = 1'-0"





10877 WATSON ROAD
ST. LOUIS, MO 63127
PROJECT MANAGERS

CASCO DIVERSIFIED CORPORATION
FIRM # F-11545
EXP. DATE 08/31/17



MICHAEL C. GRAPPERHAUS
LICENSE # 104121
EXP. DATE 06/30/17

COPYRIGHT 2014. ALL DRAWINGS AND SPECIFICATIONS SHALL REMAIN THE PROPERTY OF PIADA AND MAY NOT BE USED, DUPLICATED OR ALTERED WITHOUT THE WRITTEN CONSENT. CASCO CORPORATION RESERVES THE RIGHTS TO MAINTAIN COPIES OF THE DRAWINGS FOR REFERENCE.

INTERIOR SEATS 60
EXTERIOR SEATS 0

PIADA
8942 S. BROADWAY AVE.
BUILDING R1-A, SUITE 140
TYLER, TEXAS 75703
FOR THE PIADA GROUP
1440 KING AVENUE, COLUMBUS, OHIO 43212

PROJECT NUMBER: 916562
DRAWN BY: SAJ
CHECKED BY: MCG

ISSUE	DATE
OWNER REVIEW	08.24.2016
LANDLORD REVIEW	08.24.2016
PERMIT / BID	08.24.2016

MECHANICAL ROOF PLAN

SHEET:

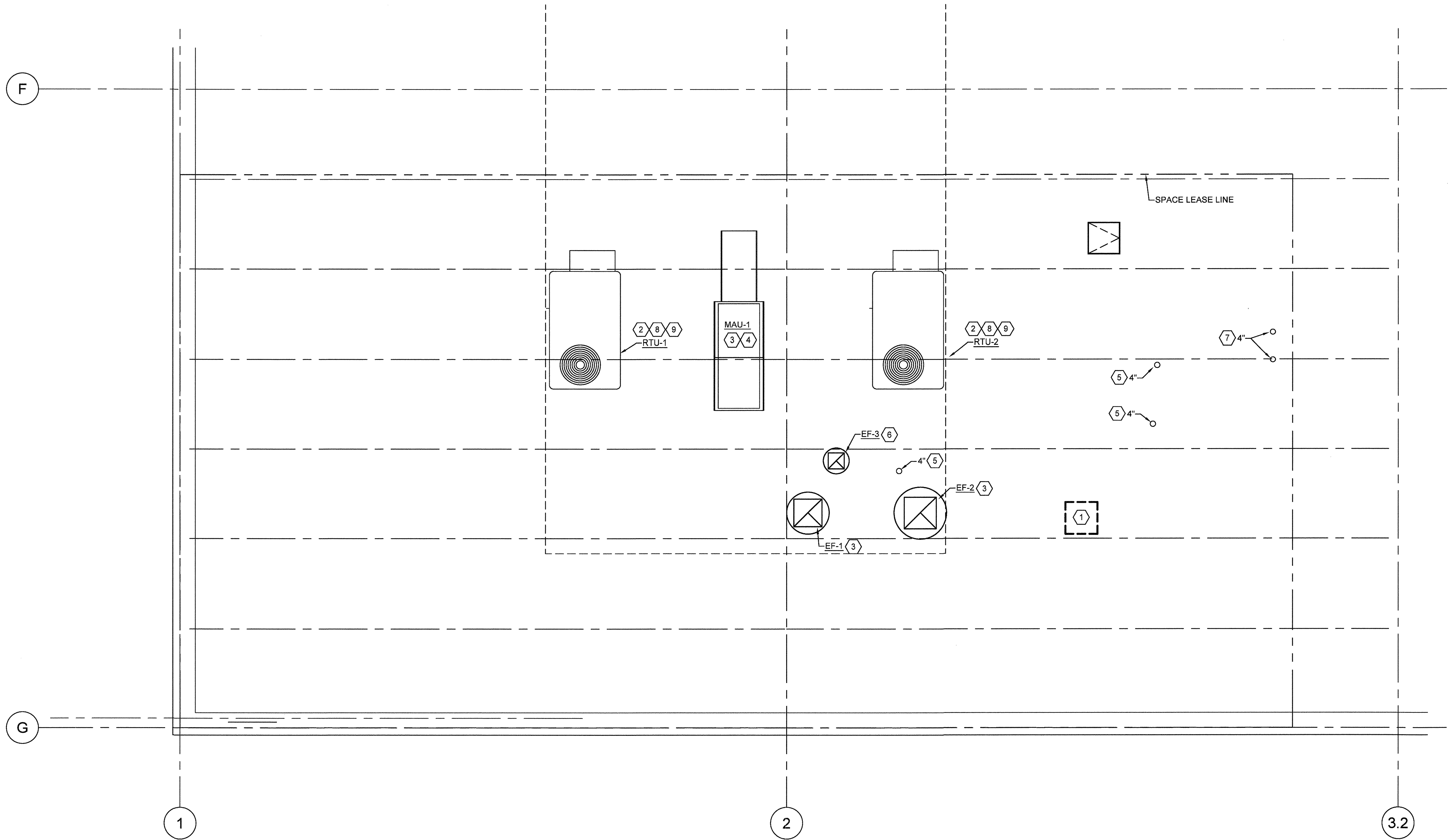
M1.2

SHEET NOTES:

1. MOUNT ALL HVAC EQUIPMENT ON ROOF PER DETAILS #1, 2 & 7 ON SHEET M3.0.
2. SEE ARCH. ROOF PLAN FOR DIMENSIONS OF INSTALLED EQUIPMENT.

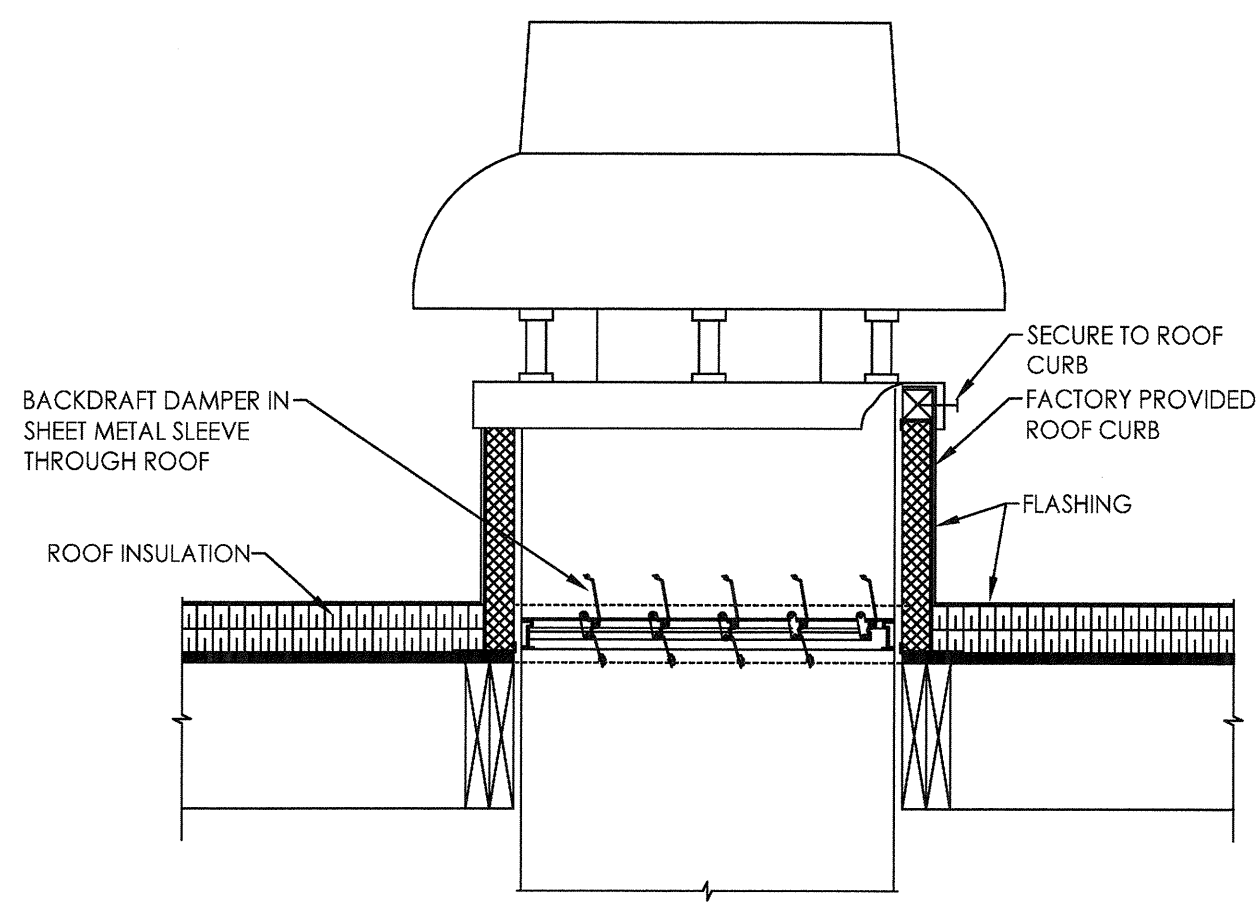
CODED NOTES:

1. WALK-IN COOLER CONDENSING UNIT SHOWN FOR REFERENCE ONLY. EQUIPMENT AND ASSOCIATED REFRIGERANT PIPING TO BE INSTALLED BY KITCHEN EQUIPMENT SUPPLIER.
2. NEW RTU PER SCHEDULE.
3. NEW EXHAUST / MAKE-UP AIR FAN, CONTRACTOR TO INSTALL PER KITCHEN DRAWINGS AND PER CODE.
4. NEW MAKE-UP AIR UNIT INSTALL ON LEVEL CURB PROVIDE CURB TO EQUIPMENT TIE DOWN CLIPS, SEE DETAIL # 7 ON M3.0.
5. VENT THRU ROOF.
6. NEW EXHAUST FAN, CONTRACTOR TO SECURE FAN TO CURB, SEE DETAIL#1 ON M3.0.
7. GWH-1 & 2 CONCENTRIC VENT THRU ROOF SEE DETAILS 3 ON P4.1 FOR MORE INFORMATION.
8. SEE DETAIL #3 ON P4.3 FOR CONDENSATE PIPING.
9. MECHANICAL CONTRACTOR TO VERIFY OUTSIDE AND SUPPLY AIR VALUES MATCH SCHEDULED.

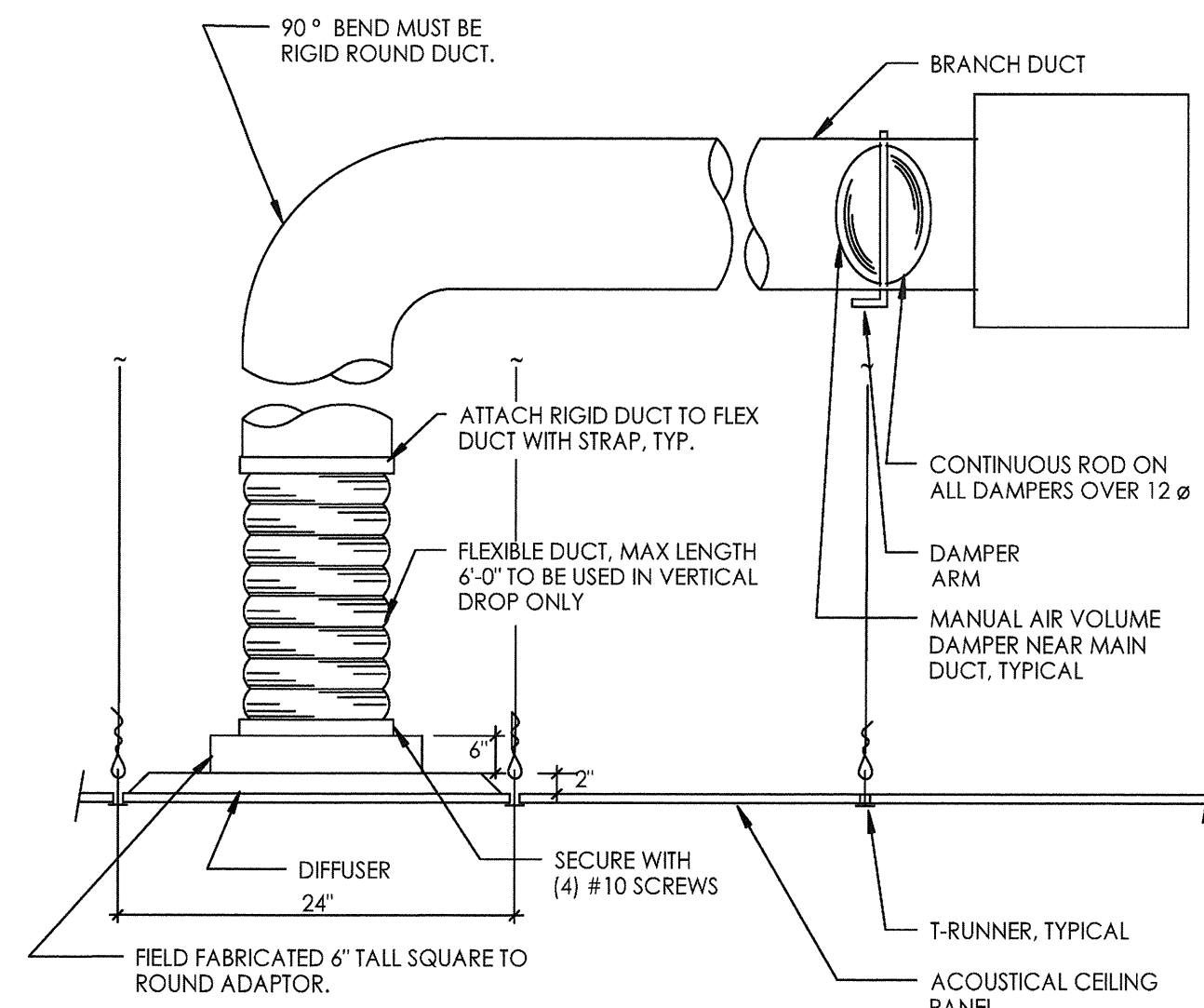


MECHANICAL ROOF PLAN
1/4" = 1'-0"

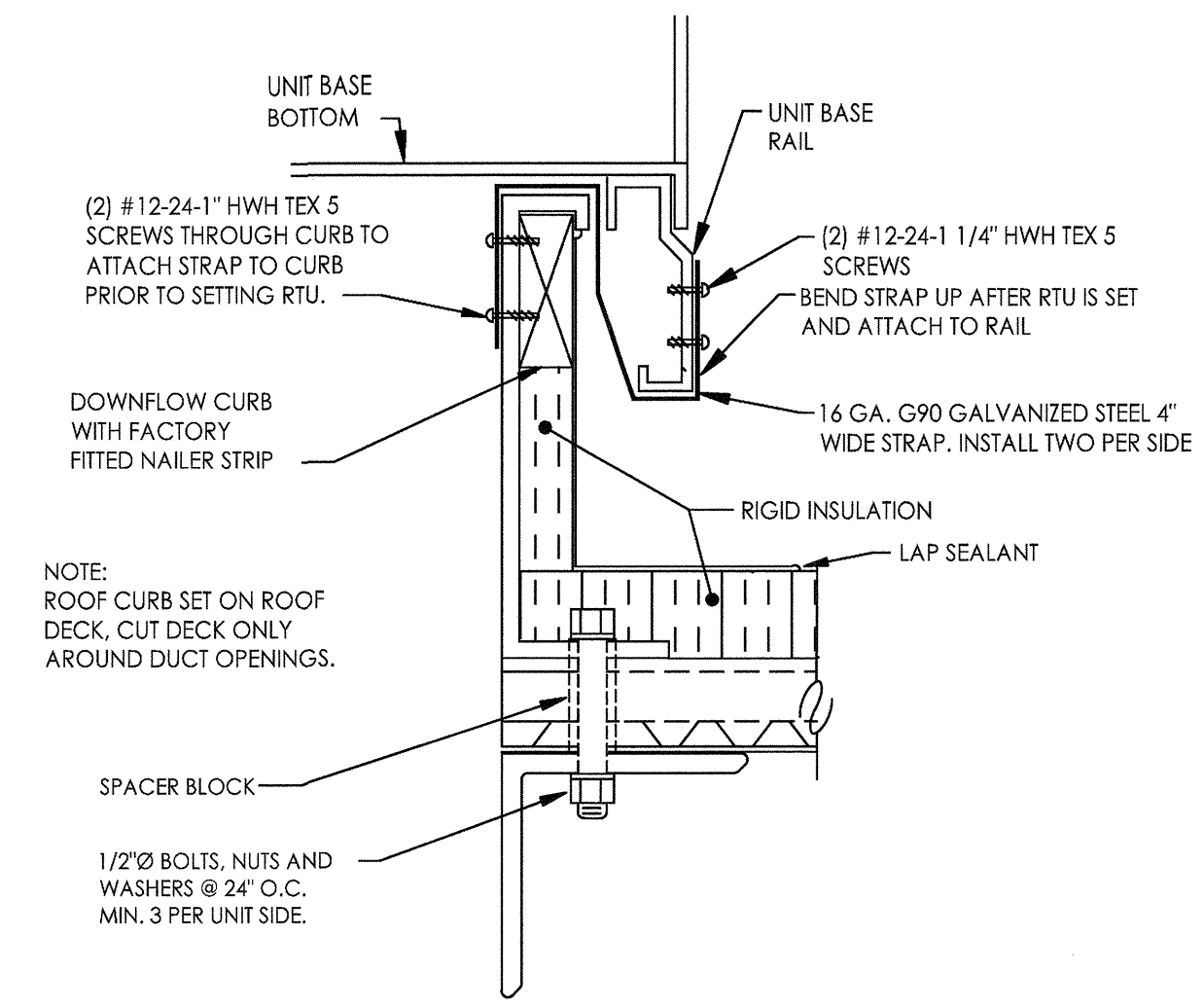




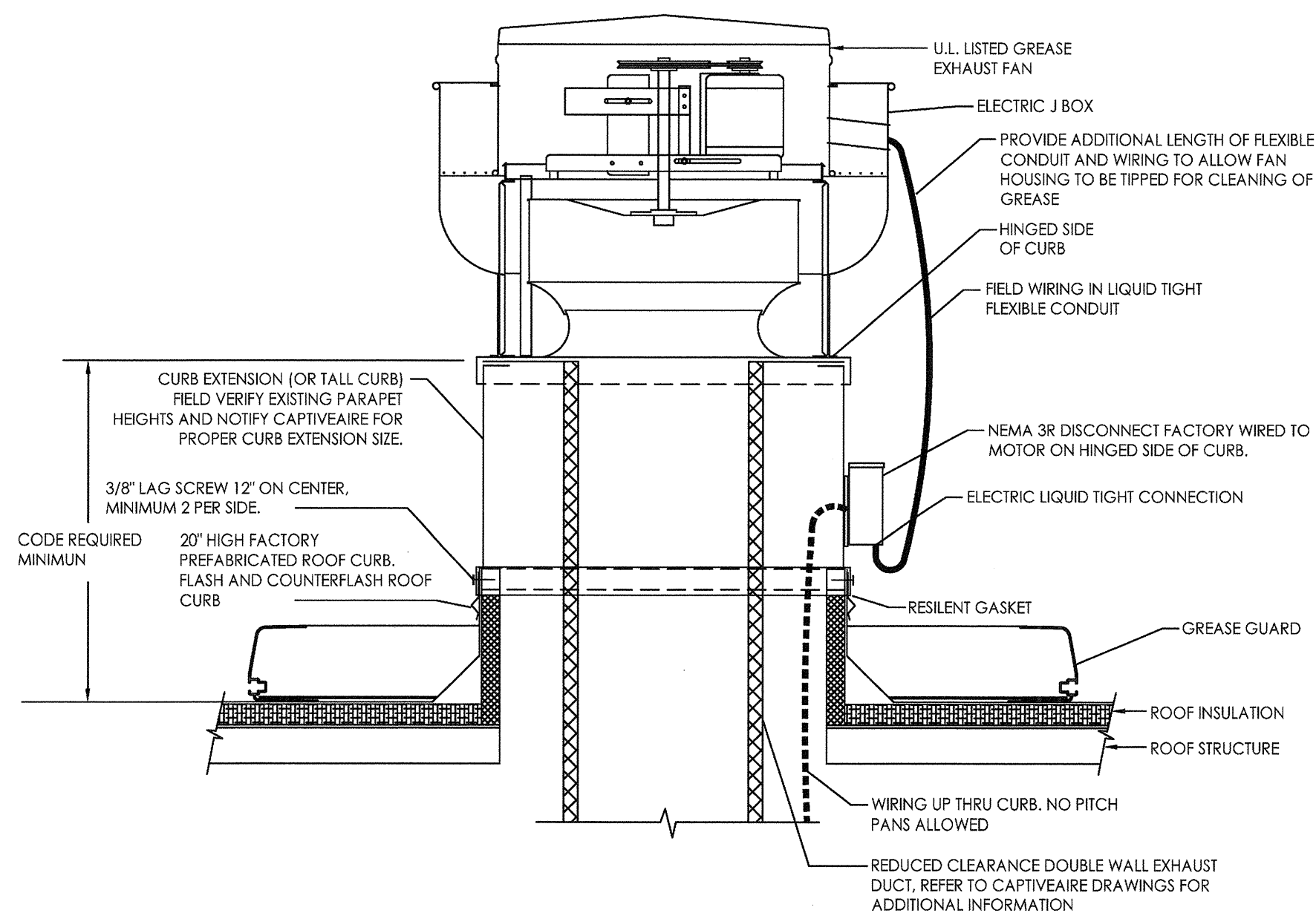
1 RESTROOM EXHAUST FAN DETAIL
N.T.S.



4 CEILING DIFFUSER CONNECTION DETAIL
N.T.S.



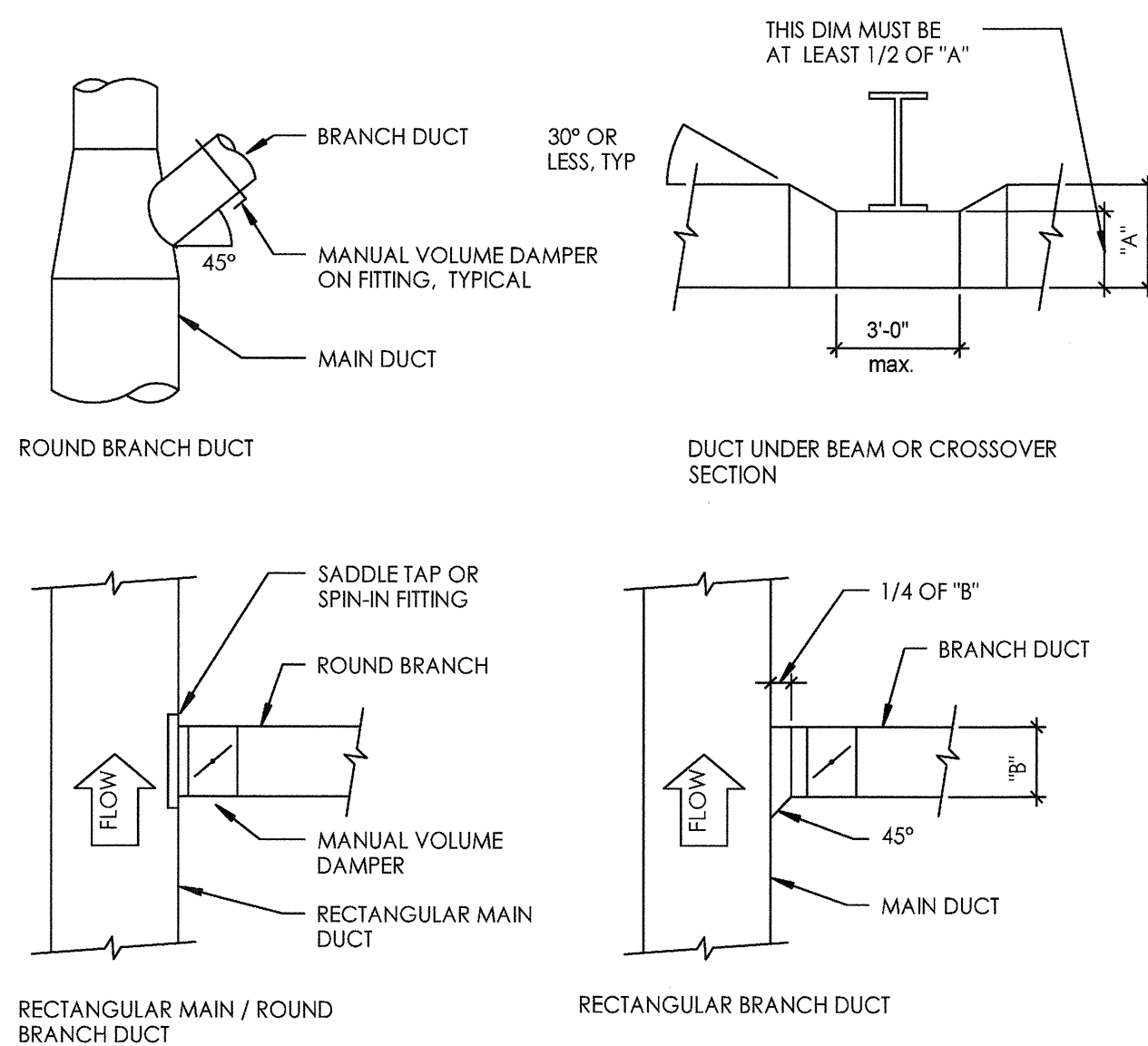
6 ROOFTOP EQUIPMENT CURB CONNECTION DETAIL
N.T.S.



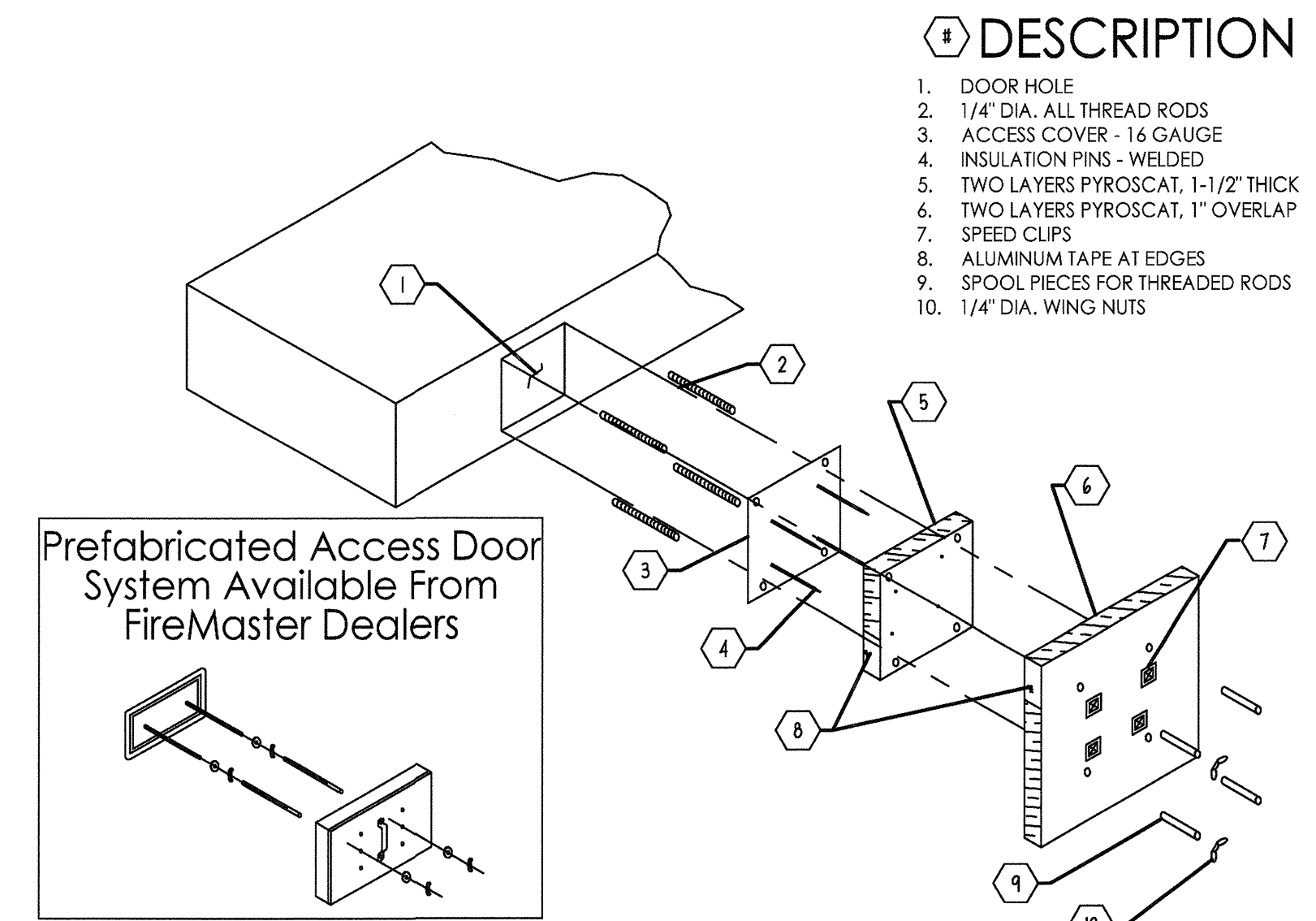
NOTES:

1. INSTALLATION SHALL BE IN ACCORDANCE WITH NFPA 96 REQUIREMENTS.
2. CUT AND PATCH EXISTING ROOFING AS REQUIRED FOR NEW CURB INSTALLATION.
3. CURB SHALL BE TAPERED TYPE AND MATCH THE PITCH OF THE ROOF.
4. CONTRACTOR TO PROVIDE TREATED WOOD BLOCKINGS AND SHIM FLAT ROOF CURB TILL LEVEL FOR ALL EXHAUST FANS AND TO ACHIEVE ROOF CURB HEIGHTS. PROVIDE ROOF CURB EXTENSION IF REQUIRED.

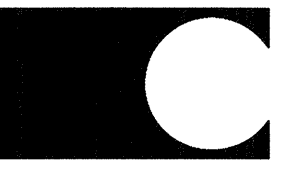
2 GREASE EXHAUST FAN (UPBLAST) DETAIL
N.T.S.



5 TYPICAL DUCT CONNECTIONS DETAIL
N.T.S.

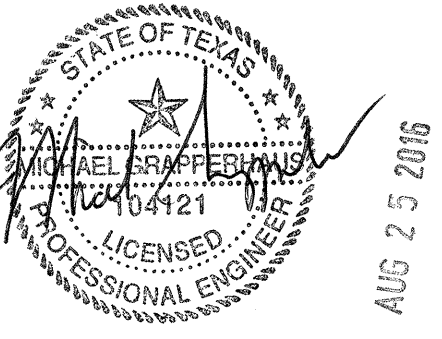


7 GREASE DUST ACCESS DOOR DETAIL (IF REQUIRED)
N.T.S.



10877 WATSON ROAD
ST. LOUIS, MO 63127
PROJECT MANAGERS

CASCO DIVERSIFIED CORPORATION
FIRM # F-11545
EXP. DATE 08/31/17



MICHAEL C. GRAPPERHAUS
LICENSE # 104121
EXP. DATE 08/30/17

COPYRIGHT 2014. ALL DRAWINGS AND SPECIFICATIONS SHALL REMAIN THE PROPERTY OF PIADA AND MAY NOT BE USED, DUPLICATED OR ALTERED WITHOUT THE WRITTEN CONSENT. CASCO CORPORATION RESERVES THE RIGHTS TO MAINTAIN COPIES OF THE DRAWINGS FOR REFERENCE.

INTERIOR SEATS 60	EXTERIOR SEATS 0
----------------------	---------------------

PIADA
8942 S. BROADWAY AVE.
BUILDING R1-A, SUITE 140
TYLER, TEXAS 75703
FOR THE PIADA GROUP
1440 KING AVENUE, COLUMBUS, OHIO 43212

PROJECT NUMBER: 916562

DRAWN BY: SAJ
CHECKED BY: MCG

ISSUE	DATE
OWNER REVIEW	08.24.2016
LANDLORD REVIEW	08.24.2016
PERMIT / BID	08.24.2016

MECHANICAL
DETAILS

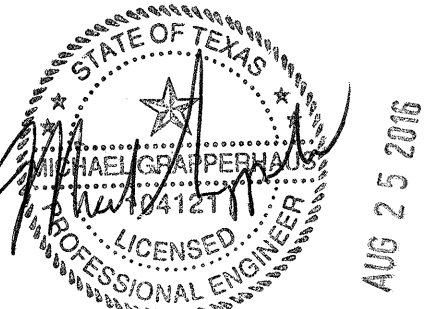
SHEET:

M3.0



10877 WATSON ROAD
ST. LOUIS, MO 63127
PROJECT MANAGERS

CASCO DIVERSIFIED CORPORATION
FIRM # F-11545
EXP. DATE 08/31/17



MICHAEL C. GRAPPERHAUS
LICENSE # 104121
EXP. DATE 06/30/17

COPYRIGHT 2014. ALL DRAWINGS AND SPECIFICATIONS SHALL REMAIN THE PROPERTY OF PIADA AND MAY NOT BE USED, DUPLICATED OR ALTERED WITHOUT THE WRITTEN CONSENT. CASCO CORPORATION RESERVES THE RIGHTS TO MAINTAIN COPIES OF THE DRAWINGS FOR REFERENCE.

INTERIOR SEATS 80	EXTERIOR SEATS 0
----------------------	---------------------

PIADA
8942 S. BROADWAY AVE.
BUILDING R1-A, SUITE 140
TYLER, TEXAS 75703
FOR THE PIADA GROUP
1440 KING AVENUE, COLUMBUS, OHIO 43212

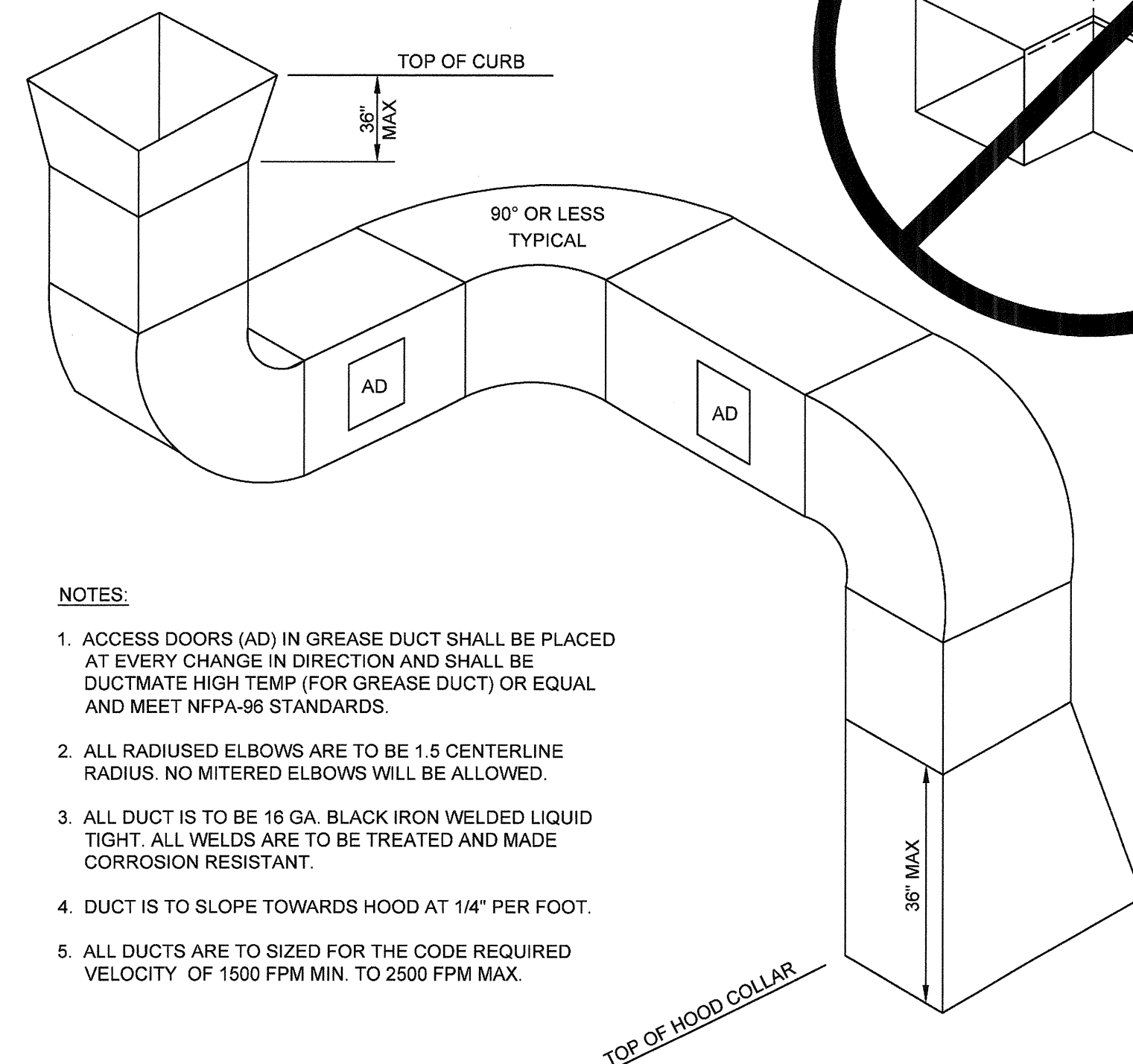
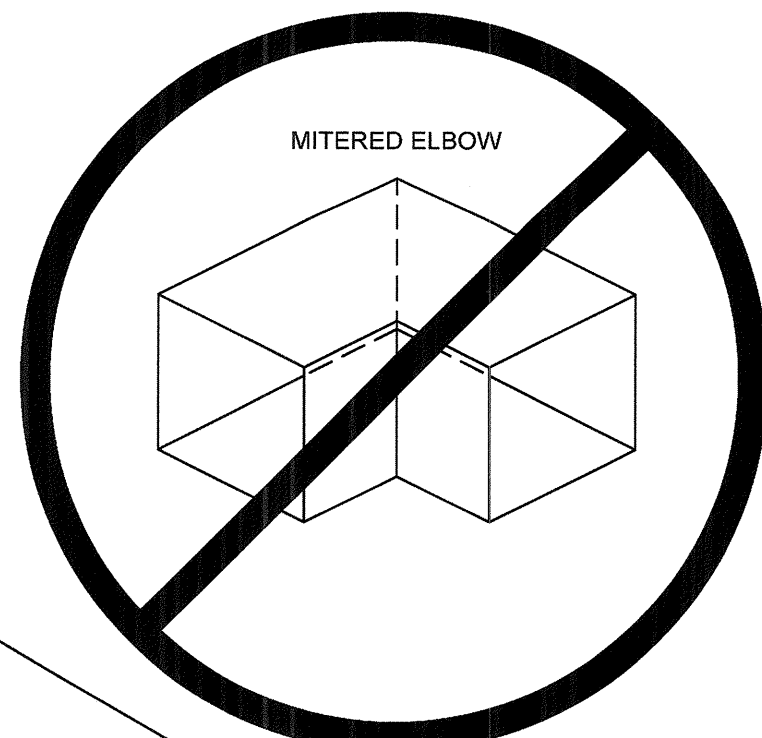
PROJECT NUMBER: 916562
DRAWN BY: SAJ
CHECKED BY: MCG

ISSUE	DATE
OWNER REVIEW	08.24.2016
LANDLORD REVIEW	08.24.2016
PERMIT / BID	08.24.2016

MECHANICAL DETAILS

SHEET:

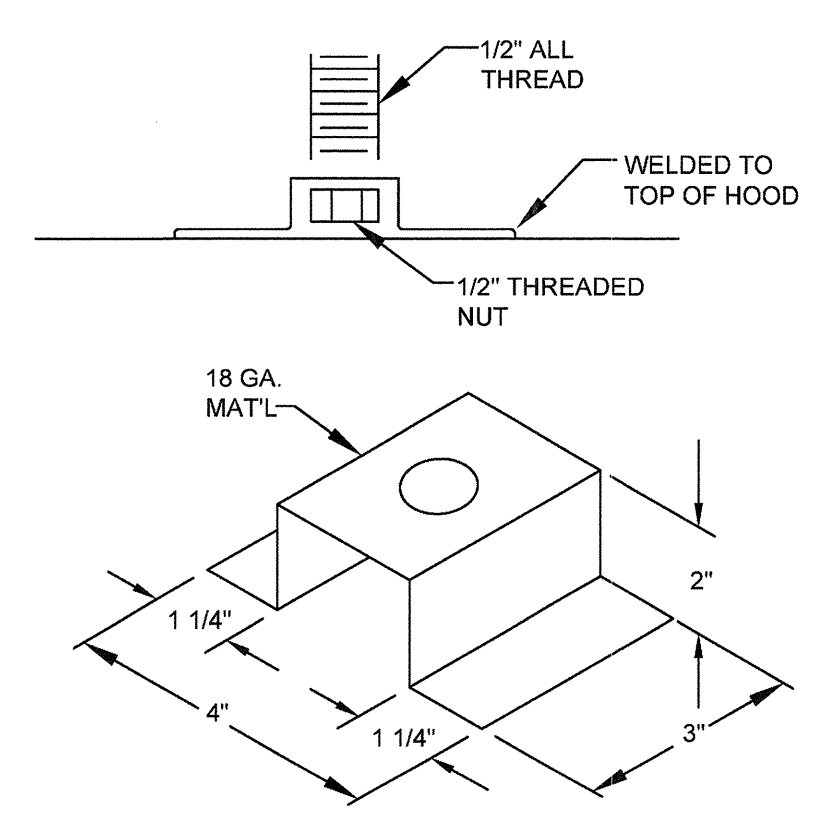
M3.1



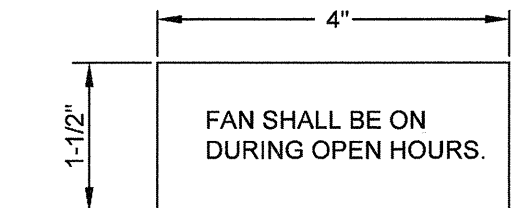
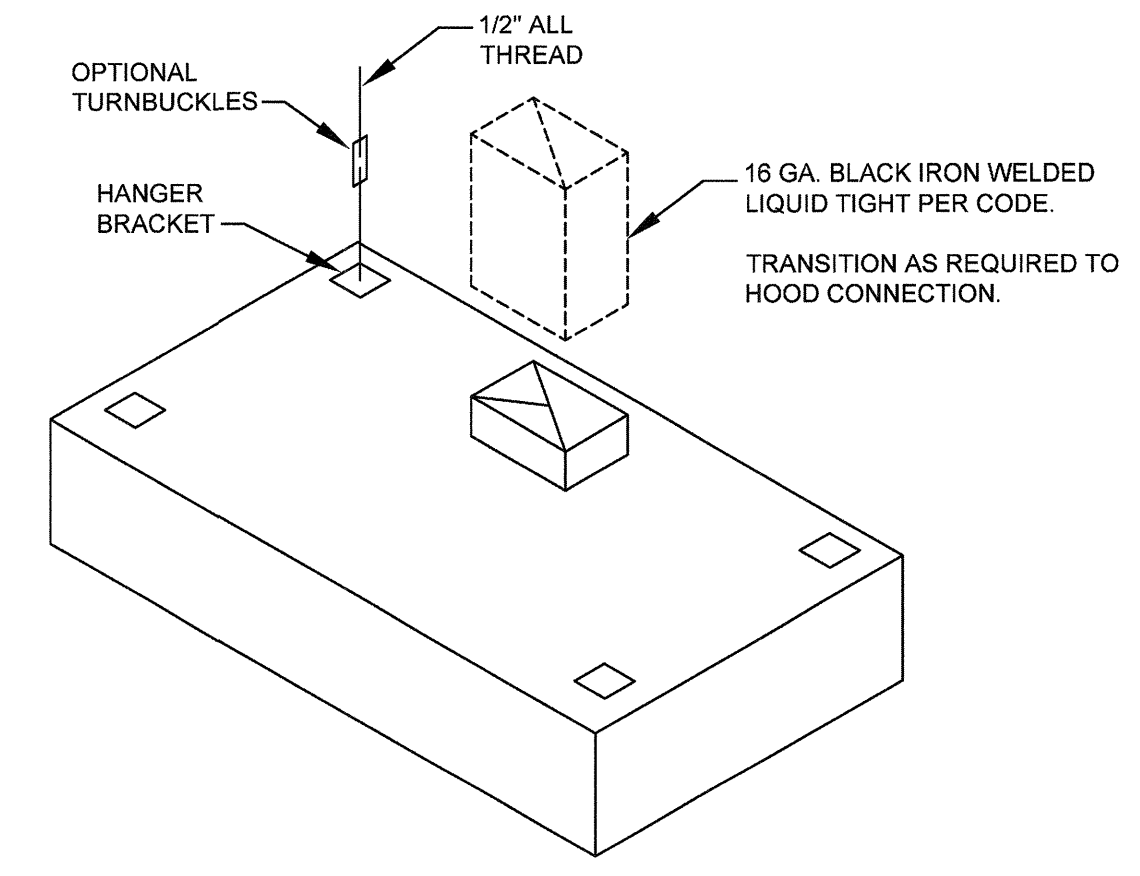
- NOTES:**
- ACCESS DOORS (AD) IN GREASE DUCT SHALL BE PLACED AT EVERY CHANGE IN DIRECTION AND SHALL BE DUCTMATE HIGH TEMP (FOR GREASE DUCT) OR EQUAL AND MEET NFPA-96 STANDARDS.
 - ALL RADIUS ELBOWS ARE TO BE 1.5 CENTERLINE RADIUS. NO MITERED ELBOWS WILL BE ALLOWED.
 - ALL DUCT IS TO BE 16 GA. BLACK IRON WELDED LIQUID TIGHT. ALL WELDS ARE TO BE TREATED AND MADE CORROSION RESISTANT.
 - DUCT IS TO SLOPE TOWARDS HOOD AT 1/4" PER FOOT.
 - ALL DUCTS ARE TO BE SIZED FOR THE CODE REQUIRED VELOCITY OF 1500 FPM MIN. TO 2500 FPM MAX.

9 TYPICAL GREASE DUCT DETAIL
N.T.S.

- GREASE DUCT ENCLOSURE SPECIAL INSPECTION REQUIREMENTS:**
- Mechanical contractor shall:
 - Install all mechanical systems in compliance with the approved Mechanical plans, ordinances and local codes.
 - Request inspection and obtain approval of mechanical grease exhaust systems prior to concealing or product installation.
 - Field-applied grease duct enclosure installing contractor shall:
 - Present names, qualifications and/or certifications to the Building Official for each installer upon request.
 - Review the approved plans and this document for installation and inspection requirements prior to product installation.
 - Confirm authorization by CSJ Mechanical Inspector to install product prior to any product installation.
 - Install product in accordance with the terms of the listing and the manufacturer's installation instructions.
 - Confirm that where CSJ Inspector is used, only first layer of product will be installed before product inspection is requested.
 - Confirm that where 3rd party Special Inspection is provided, product installation will only proceed in the presence of the Special Inspector named on this document.

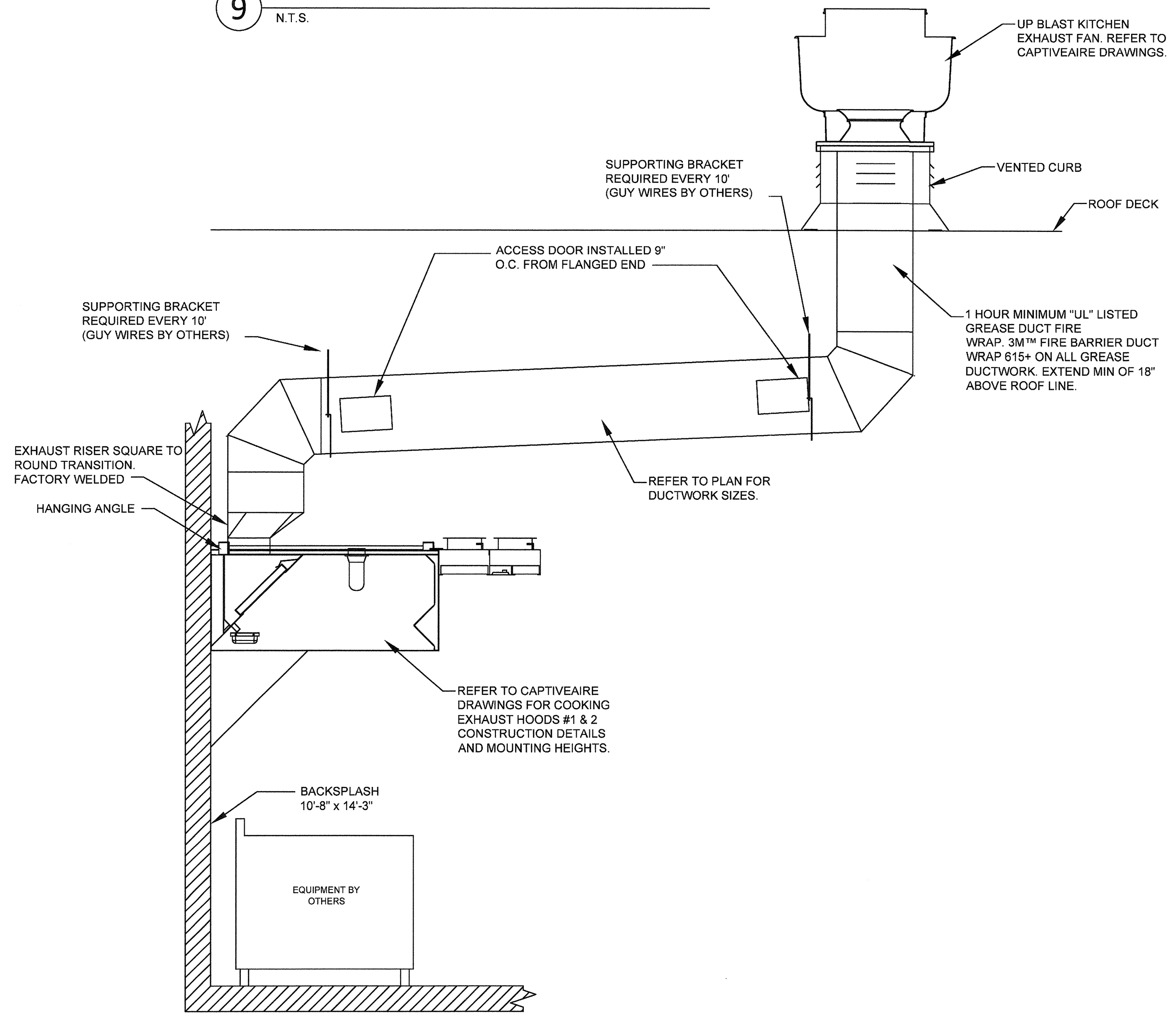


9 HANGER BRACKET DETAIL
N.T.S.

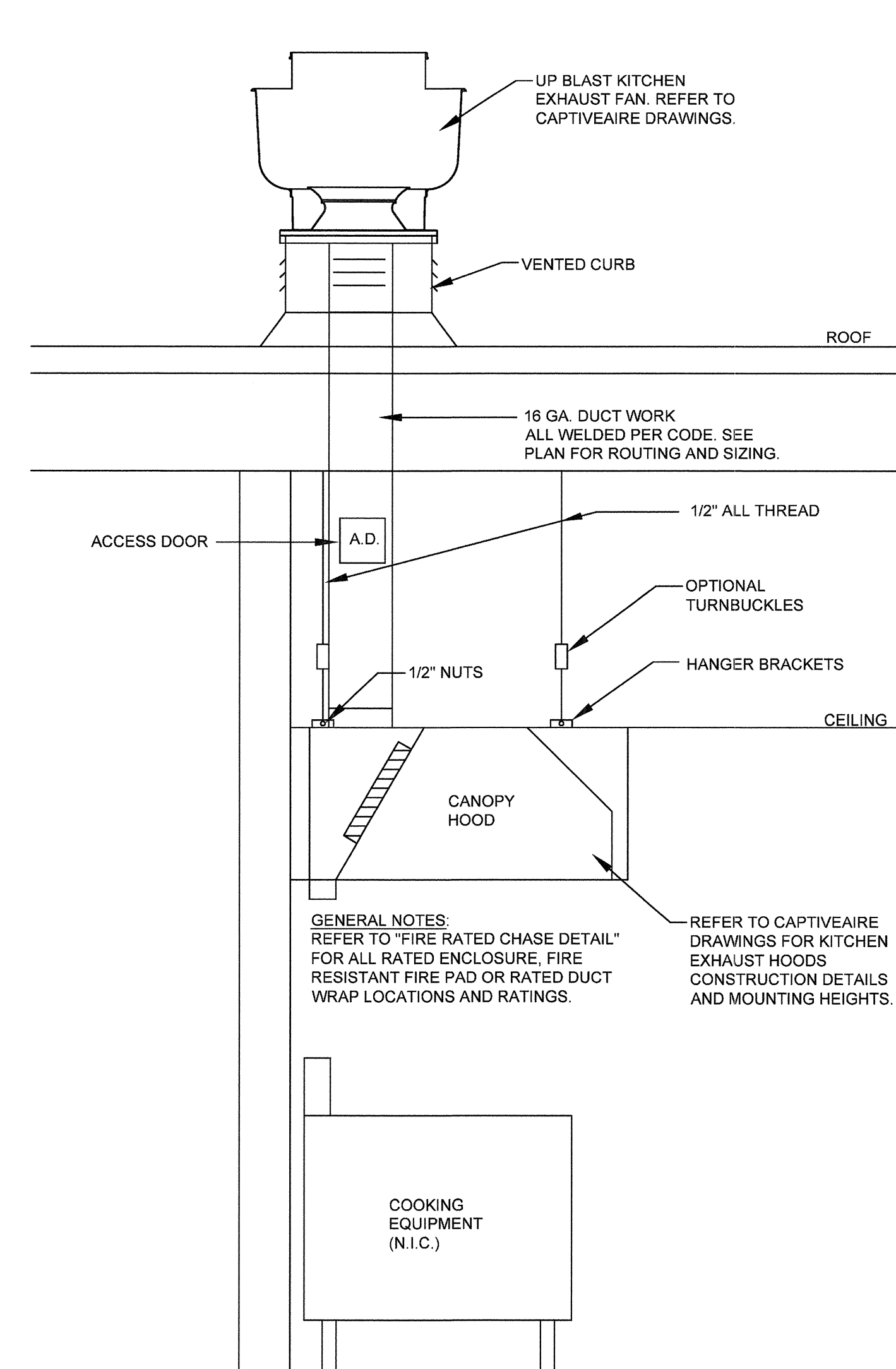


- SIGN TO BE FABRICATED FROM LANACOD PLASTIC WITH BLACK OUTER LAMINATIONS AND A WHITE INNER LAMINATION.
- LETTERS SHALL BE 1/4" HIGH UPPER CASE ENGRAVED LETTERS TO EXPOSE THE WHITE LAMINATION, WORDING TO BE THE SAME AS SHOWN ABOVE.
- EACH LINE OF LETTERING TO BE CENTERED ON SIGN.
- INSTALL SIGN NEAR SWITCH IN A PROMINENT PLACE AS DIRECTED BY OWNER'S CONSTRUCTION MANAGER. REMOVE ALL PAINT AND CLEAN MOUNTING SURFACE FOR MOUNTING SIGN WITH A CONTACT CEMENT.

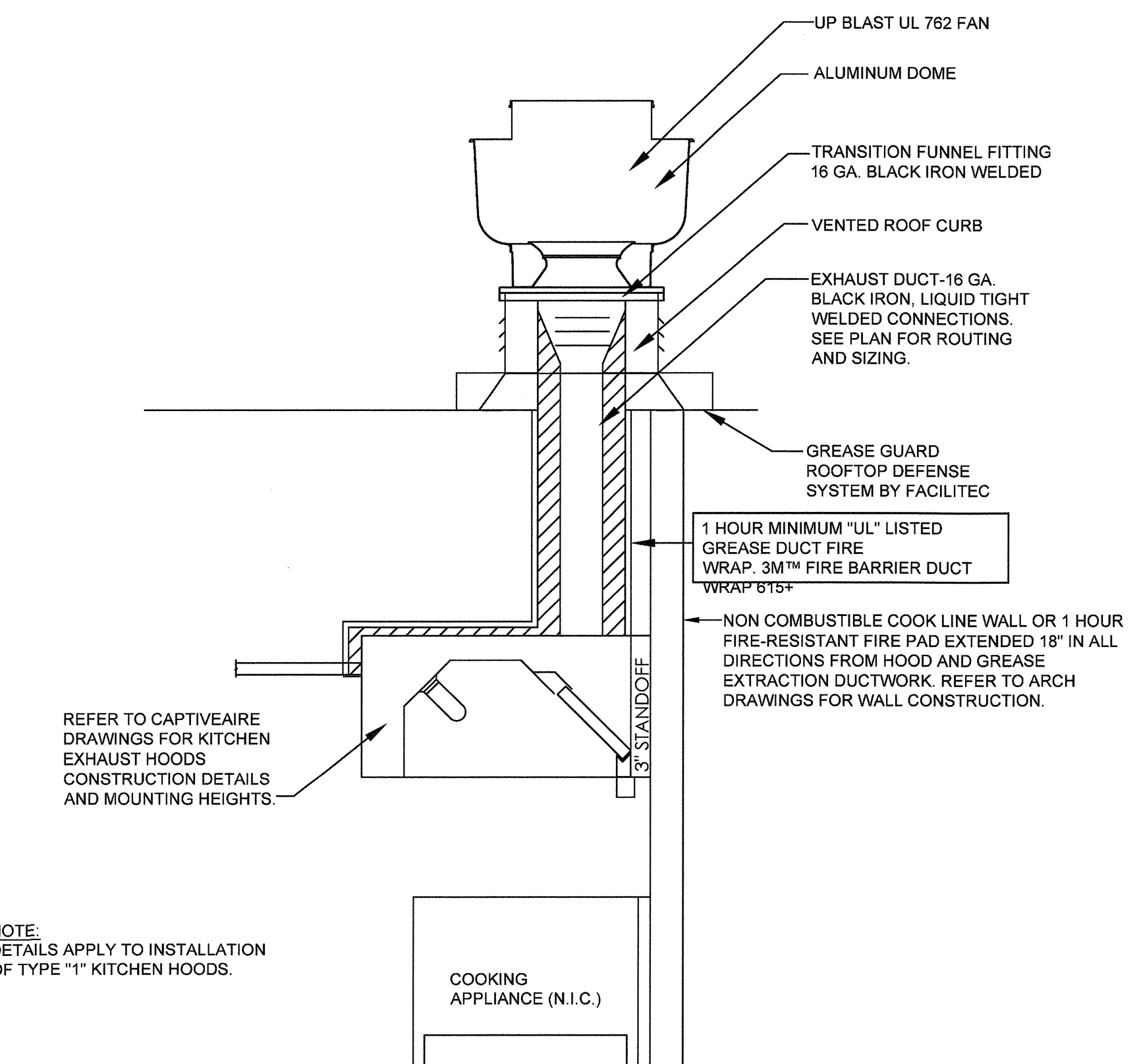
9 "FAN ON" SIGN DETAIL
N.T.S.



9 EXHAUST HOOD DUCT SECTION
N.T.S.



9 EXHAUST HOOD INSTALLATION DETAIL
N.T.S.



9 FIRE RATED CHASE DETAIL
N.T.S.

GENERAL NOTES:
REFER TO "FIRE RATED CHASE DETAIL" FOR ALL RATED ENCLOSURE, FIRE RESISTANT FIRE PAD OR RATED DUCT WRAP LOCATIONS AND RATINGS.

NOTE:
DETAILS APPLY TO INSTALLATION OF TYPE "1" KITCHEN HOODS.

ROOF TOP UNIT SCHEDULE																			
MARK	NUMBER	MANUFACTURER	MODEL NO.	NOMINAL TONS	TOTAL COOLING (MBH)	SENSIBLE COOLING (MBH)	O/A CFM	TOTAL CFM	HEAT INPUT (BTUH)	HEAT OUTPUT (BTUH)	BLOWER H.P. OR K.W.	OUTSIDE AIR (CFM) MIN./MAX.	POWER SUPPLY (VOLTS-PHASE)	MCA	MOCP	EXTERNAL S.P. (" OF W.C.)	EER/IEER/SEER	WEIGHT	REMARKS
RTU	1	TRANE	YSC120	10.0	119	92.7	1000	4000	250,000	200,000	3.75 H.P.	1100	208-3	49.6	60	0.9	11.3/13.0/---	1,600	1-8
RTU	2	TRANE	YSC092	7.5	94	70.9	750	3000	200,000	180,000	1 H.P.	1000	208-3	39.3	50	0.9	11.2/13.0/---	1,250	1-8

REMARKS
1. UNIT SHALL BE CLASSIFIED IN ACCORDANCE WITH ANSI-Z21.47, ARI 210 & 270. ESP VALUE BASED UPON DRY COIL & NO FILTER
2. COOLING CAPACITY BASED UPON 95°F AMBIENT AND 80/67 COIL ENTERING CONDITIONS.
3. FURNISH UNIT WITH CURB.
4. MANUFACTURER SHALL FURNISH UNIT WITH COMPARATIVE ENTHALPY CONTROLLED ECONOMIZERS WITH BAROMETRIC RELIEF DAMPER, 0 TO 100% FULLY MODULATING MOTORIZED OUTSIDE AIR DAMPERS, OUTSIDE AIR HOOD & ADJUSTABLE POSITION POTENTIOMETER. DAMPER ACTUATOR SHALL BE SPRING RETURN TYPE TO FULLY CLOSE OUTDOOR AIR DAMPER WHEN UNIT IS SHUT DOWN.
5. FURNISH UNIT WITH FULL 1 YEAR WARRANTY (LABOR & MATERIAL) AND 5 YEAR COMPRESSOR REPLACEMENT WARRANTY (MATERIAL ONLY).
6. ROOFTOP UNIT IS BASED ON A REQUESTED 140 SQ FT/TON FUTURE TENANT FIT OUT REQUIREMENT WITH A MINIMUM OF 25% OUTSIDE AIR.
7. FURNISH UNIT WITH TOOL-LESS HAIL GUARDS.
8. FURNISH UNIT WITH MICRO PROCESSOR CONTROL.
9. PROVIDE UNIT WITH SMOKE DUCT DETECTORS IN THE RETURN AIR SIDE AND NON POWERED OUTLET.

EXHAUST FAN SCHEDULE										
EF	MANUFACTURER	MODEL	DESCRIPTION	CFM	ESP	DRIVE	MOTOR HP / VOLT/PHASE		LOCATION - SERVING AREA/ EQUIPMENT	WEIGHT WITH CURB (LBS)
3	GREENHECK	G-081	ROOF MOUNTED	300	0.75	BELT	1/4	120/1	TOILETS	100

NOTES:
1. ALL FANS SHALL HAVE A DISCONNECT SWITCH
2. ALL BELT DRIVEN FANS SHALL HAVE VARIABLE PITCH MOTOR PULLEYS
3. ALL ROOF FANS SHALL BE PROVIDED WITH PRE-FAB CURB, BIRDSCREEN & DAMPER

APPROVED ALTERNATES: COOK, CARNES, TWIN CITY FANS & ACME OR PENNBARRY

CAPTIVE AIRE GAS MAKE-UP AIR UNITS SCHEDULE (BY OWNER SHOWN FOR COORDINATION)																
MAU	MANUFACTURER	MODEL	DESCRIPTION	CFM	ESP	RPM	MOTOR			HEATING (BTUs)		SERVING AREA/ EQUIPMENT	CONTROL	REMARKS	WEIGHT WITH CURB (LBS)	ROOF OPENING
							HP	FLA	VOLT/PHASE	INPUT	OUTPUT					
1	CAPTIVE AIRE	A2-D-500-G15-PB	ROOF MOUNTED	3,655	0.60	898	3	9.5	208/3	235,986	217,107	HOOD #1 & 2	INTERLOCK WITH HOOD'S	SEE NOTES	950	18"x16"

NOTES:
1. ALL FANS SHALL HAVE A DISCONNECT SWITCH
2. ALL BELT DRIVEN FANS SHALL HAVE VARIABLE PITCH MOTOR PULLEYS
3. ALL ROOF FANS SHALL BE PROVIDED WITH PRE-FAB CURB, BIRDSCREEN & DAMPER
4. ALL UNITS TO HAVE A VERTICAL DISCHARGE OPENING.
5. REFER TO KITCHEN (MFS) DWGS FOR SPECIFIC INFO.

APPROVED ALTERNATES: NONE

CAPTIVE AIRE GREASE FAN SCHEDULE (BY OWNER SHOWN FOR COORDINATION)													
EF	MANUFACTURER	MODEL	DESCRIPTION	CFM	ESP	RPM	MOTOR			SERVING AREA/ EQUIPMENT	CONTROL	REMARKS	WEIGHT WITH CURB (LBS)
							HP	FLA	VOLT/PHASE				
1	CAPTIVE AIRE	DJ180HFA	ROOF MOUNTED	3382	1.500	1399	3.0	9.5	208/3	HOOD #1	INTERLOCK WITH HOOD #1	SEE NOTES	164
2	CAPTIVE AIRE	DJ85HFA	ROOF MOUNTED	1659	1.000	1285	0.75	2.8	208/3	HOOD #2	INTERLOCK WITH HOOD #2	SEE NOTES	131

NOTES:
1. ALL FANS SHALL HAVE A DISCONNECT SWITCH
2. ALL BELT DRIVEN FANS SHALL HAVE VARIABLE PITCH MOTOR PULLEYS
3. ALL ROOF FANS SHALL BE PROVIDED WITH PRE-FAB CURB & BIRDSCREEN
4. ALL FAN SHALL HAVE A VERTICAL/DOWN OPENING
5. REFER TO KITCHEN (MFS) DWGS FOR SPECIFIC INFO.

APPROVED ALTERNATES: NONE

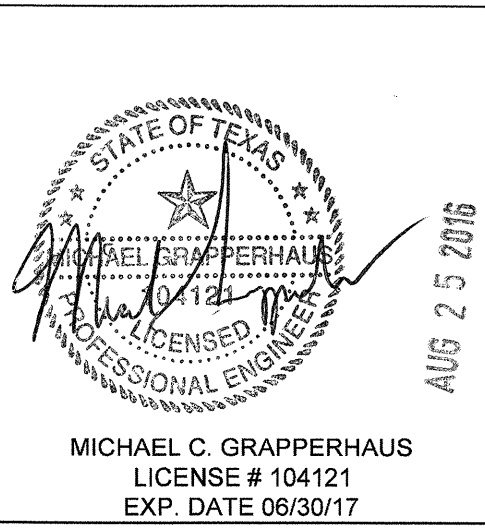
CAPTIVE AIRE HOODS SCHEDULE (BY OWNER SHOWN FOR COORDINATION)													
HOOD	MANUFACTURER	MODEL	HOOD LENGTH	MAX. COOKING TEMP.	TOTAL EXHAUST CFM	CFM FROM MAU-1	CFM FROM EX RTU-2	EXHAUST RISER (IN)	S.P. (IN WG)total	LIGHTS QUANTITY	LIGHTS TYPE	FIRE SUPP. SYSTEM	HANGING WEIGHT
KH-1	CAPTIVE AIRE	5424 ND-2W-ACSP-FB	10'-3"	450°F	2,757	2,178	1,100	26" x 10"	1.148	3	INCAND.	YES	1,012
KH-2	CAPTIVE AIRE	5424 ND-2W-PSP-F	6'-2"	450°F	1,659	1,477	0	15" x 10"	0.982	2	INCAND.	YES	625

NOTES:
1. FAN AND LIGHT SWITCH/CONTROL SHALL BE LOCATED ON THE SIDE OF THE HOOD, NOT ON THE FRONT FACE.
2. COORDINATE EXACT LOCATION OF FAN AND LIGHT SWITCH/CONTROL WITH OWNER.
3. STAINLESS STEEL PERFORATED PANEL/GRILLS SHALL BE PROVIDED FOR HOODS 1 & 2 MAKE UP AIR PLENUMS.
4. REFER TO KITCHEN (MFS) DWGS FOR SPECIFIC INFO.

APPROVED ALTERNATES: NONE

AIR BALANCE						
MARK	SUPPLY CFM	RETURN CFM	SUPPLY AIR CFM TO HOOD	OUTDOOR AIR CFM	EXHAUST CFM	BUILDING PRESSURE
RTU-1	4,000	3,000	-	1000	-	
RTU-2	3,000	2,250	1,100	750	-	
MAU-1	-	-	-	3,655	-	
EF-1	-	-	-	-	3,282	
EF-2	-	-	-	-	1,659	
EF-3	-	-	-	-	300	
	7,000	5,250	1,100	5,405	5,241	+ 164 CFM

AIR DISTRIBUTION DEVICE SCHEDULE							
MARK	MANUFACTURER	MODEL #	FACE	STYLE	BORDER TYPE	FINISH	DESCRIPTION
D-1	TITUS	PAS	24X24	LOUVERED	LAY-IN	WHITE ENAMEL	-
D-2	TITUS	PAS	12X12	LOUVERED	SURFACE	WHITE ENAMEL	-
D-4	TITUS	OMNI	24X24	PERFORATED	LAY-IN	#84 BLACK	-
D-6	TITUS	OMNI	12X12	LOUVERED	SURFACE	WHITE ENAMEL	-
G-1	TITUS	350RL	SEE PLAN	LOUVERED	LAY-IN	WHITE ENAMEL	MOUNT AS HIGH AS POSSIBLE
G-2	TITUS	PAS	12X12	PERFORATED	SURFACE	WHITE ENAMEL	-



COPYRIGHT 2014. ALL DRAWINGS AND SPECIFICATIONS SHALL REMAIN THE PROPERTY OF PIADA AND MAY NOT BE USED, DUPLICATED OR ALTERED WITHOUT THE WRITTEN CONSENT. CASCO CORPORATION RESERVES THE RIGHTS TO MAINTAIN COPIES OF THE DRAWINGS FOR REFERENCE.

INTERIOR SEATS 60
EXTERIOR SEATS 0

PIADA
8942 S. BROADWAY AVE.
BUILDING R1-A, SUITE 140
TYLER, TEXAS 75703
FOR THE PIADA GROUP
1440 KING AVENUE, COLUMBUS, OHIO 43212

PROJECT NUMBER: 916562
DRAWN BY: SAJ
CHECKED BY: MCG

ISSUE	DATE
OWNER REVIEW	08.24.2016
LANDLORD REVIEW	08.24.2016
PERMIT / BID	08.24.2016

MECHANICAL SCHEDULES AND DETAILS

SHEET:

M4.1