

**HOOD INFORMATION - JOB#6097446**

HOOD NO	TAG	MODEL	MANUFACTURER	LENGTH	MAX COOKING TEMP	TYPE	APPLIANCE DUTY	DESIGN CFM/FT	TOTAL EXH CFM	EXHAUST PLENUM RISER(S)						HOOD CONSTRUCTION	HOOD CONFIG		
										WIDTH	LENG	HEIGHT	DIA	CFM	VEL		SP	END TO END	ROW
1	HD1 FRYER	3650 BD-2	CAPTIVEAIRE	3' 6"	600 DEG	I	HEAVY	171	600	8'	8'	4'		600	1350	-0.422"	430 SS WHERE EXPOSED	ALONE	ALONE

FOR QUESTIONS, CALL THE  
Air Solutions  
REGION 120  
PHONE: (513) 860 - 5555  
EMAIL: reg120@captiveaire.com

**HOOD INFORMATION**

HOOD NO	TAG	FILTER(S)				LIGHT(S)				UTILITY CABINET(S)				FIRE SYSTEM PIPING	HOOD HANGING WEIGHT			
		TYPE	QTY	HEIGHT	LENGTH	EFFICIENCY @ 7 MICRONS	QTY	TYPE	WIRE GUARD	LOCATION	SIZE	FIRE SYSTEM				ELECTRICAL	SWITCHES	
												TYPE	SIZE	MODEL #	QUANTITY			
1	HD1 FRYER	CAPRATE SOLID FILTER	2	16'	20'	85% SEE FILTER SPEC	2	L55 SERIES E26	NO								NO	205 LBS

**HOOD OPTIONS**

HOOD NO	TAG	OPTION
1	HD1 FRYER	FIELD WRAPPER 35.00' HIGH FRONT, LEFT, RIGHT.
		BACKSPLASH 62.00' HIGH X 42.00' LONG 430 SS VERTICAL.
		BACKSPLASH 120.00' HIGH X 18.00' LONG 430 SS VERTICAL.
		BACKSPLASH 120.00' HIGH X 18.00' LONG 430 SS VERTICAL.
		RIGHT QUARTER END PANEL 26' TOP WIDTH, 0' BOTTOM WIDTH, 26' HIGH 430 SS.
		LEFT QUARTER END PANEL 26' TOP WIDTH, 0' BOTTOM WIDTH, 26' HIGH 430 SS.
		INSULATION FOR BACK OF HOOD. SENSOR-CV.

**EXHAUST FAN INFORMATION - JOB#6097446**

FAN UNIT NO	TAG	QTY	FAN UNIT MODEL #	MANUFACTURER	CFM	ESP	RPM	MOTOR ENCL	HP	BHP	PHASE	VOLT	FLA	DISCHARGE VELOCITY	WEIGHT (LBS)	SDNES
1	KEF 1 FRYER	1	DJ33HFA	CAPTIVEAIRE	600	1.000	1600	TEAD-ECM	0.333	0.2480	1	208	2.5	297 FPM	75	17.8

**CONDENSER DETAILS**

FAN UNIT NO	TAG	FAN UNIT MODEL #	CONDENSER NO	TONNAGE	VOLTAGE	PHASE	FREQUENCY	MCA	RLA	MAX FUSE SIZE	MIN WIRE SIZE	SEER
2	SF-MPU1	A1-D.250-15D-MPU	1	3	208-230	3 PHASE	60 HZ	14.5 AMPS	11.9 AMPS	20 AMPS	14 AWG	14

**MUA FAN INFORMATION - JOB#6097446**

FAN UNIT NO	TAG	QTY	FAN UNIT MODEL #	BLOWER	HOUSING	MIN CFM	DESIGN CFM	ESP	RPM	MOTOR ENCL	HP	BHP	PHASE	VOLT	FLA	MCA	MDCP	WEIGHT (LBS)	SDNES
2	SF-MPU1	1	A1-D.250-15D-MPU	15MF-1-MDD	A1-D.250	1100	1700	0.400	1914	DDP, PREMIUM	1.500	1.0650	3	208	4.4	5.5A	15A	1063	17.9

**SPECIFICATION: CAPRATE® GREASE-STOP® SOLID FILTER**

THE CAPRATE GREASE-STOP SOLID FILTER IS A SINGLE-STAGE FILTER FEATURING A UNIQUE S-BAFFLE DESIGN IN CONJUNCTION WITH A SLOTTED REAR BAFFLE DESIGN, TO DELIVER EXCEPTIONAL FILTRATION EFFICIENCY.

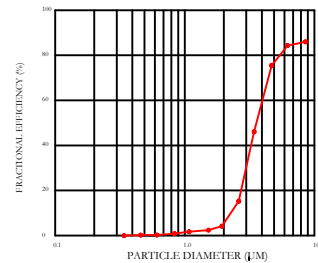
FILTER IS STAINLESS STEEL CONSTRUCTION, AND SIZED TO FIT INTO STANDARD 2-INCH DEEP HOOD CHANNEL(S).

UNITS SHALL INCLUDE STAINLESS STEEL HANDLES AND A FASTENING DEVICE TO SECURE THE TWO COMPONENTS WHEN ASSEMBLED.

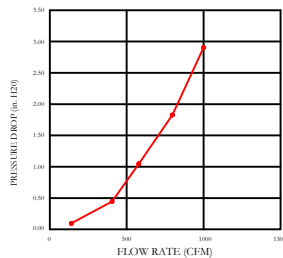
GREASE EXTRACTION EFFICIENCY PERFORMANCE SHALL REMOVE AT LEAST 75% OF GREASE PARTICLES FIVE MICRONS IN SIZE, AND 85% GREASE PARTICLES SEVEN MICRONS IN SIZE AND LARGER, WITH A CORRESPONDING PRESSURE DROP NOT TO EXCEED 1.0 INCHES OF WATER GAUGE.

THE CAPRATE GREASE-STOP SOLID WAS TESTED TO ASTM STANDARD ASTM F2519-05. MANUFACTURER APPROVED FOR USE IN SOLID FUEL APPLICATIONS AS A SPARK ARRESTER.

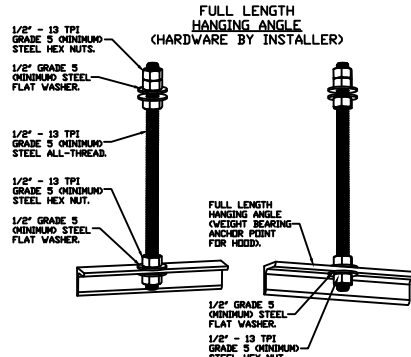
EFFICIENCY VS. PARTICLE DIAMETER



PRESSURE DROP VS. FLOW RATE

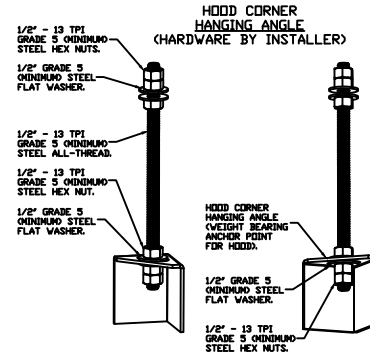


CAPRATE FILTERS ARE BUILT IN COMPLIANCE WITH:  
NFPA #96.  
NSF STANDARD #2.  
UL STANDARD #1046.  
INT. MECH. CODE (IMC).  
ULC-S649.



**ASSEMBLY INSTRUCTIONS**

HANGING ANGLE MUST BE SUPPORTED WITH 1/2" - 13 TPI GRADE 5 (MINIMUM) ALL-THREAD. SANDWICH HANGING ANGLES AND CEILING ANCHOR POINTS WITH 1/2" GRADE 5 (MINIMUM) STEEL FLAT WASHERS AND 1/2" - 13 TPI GRADE 5 (MINIMUM) HEX NUTS AS SHOWN. MUST USE DOUBLED HEX NUT CONFIGURATION ABOVE CEILING ANCHORS. SINGLE HEX NUT BENEATH HANGING ANGLE IS ACCEPTABLE FOR FULL LENGTH HANGING ANGLES. MAINTAIN 1/4" OF EXPOSED THREADS BENEATH BOTTOM HEX NUT. TORQUE ALL HEX NUTS TO 57 FT-LBS.

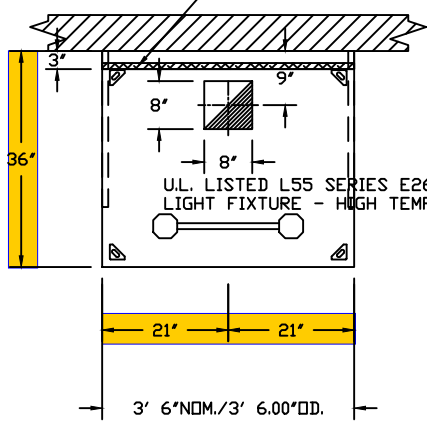


**ASSEMBLY INSTRUCTIONS**

HANGING ANGLE MUST BE SUPPORTED WITH 1/2" - 13 TPI GRADE 5 (MINIMUM) ALL-THREAD. SANDWICH HANGING ANGLES AND CEILING ANCHOR POINTS WITH 1/2" GRADE 5 (MINIMUM) STEEL FLAT WASHERS AND 1/2" - 13 TPI GRADE 5 (MINIMUM) HEX NUTS AS SHOWN. MUST USE DOUBLED HEX NUT CONFIGURATION BENEATH HOOD HANGING ANGLES AND ABOVE CEILING ANCHORS. MAINTAIN 1/4" OF EXPOSED THREADS BENEATH BOTTOM HEX NUT. TORQUE ALL HEX NUTS TO 57 FT-LBS.

JOB Skyline Remodel (Richmond, KY)	
LOCATION Richmond, KY, 40475	
DATE 9/6/2023	JOB # 6097446
DWG # 1	DRAWN BY
REV.	SCALE 3/8" = 1'-0"

1" LAYER OF INSULATION FACTORY  
 INSTALLED IN BACK STANDOFF.  
 MEETS 0 INCH REQUIREMENTS FOR  
 CLEARANCE TO COMBUSTIBLE SURFACES.



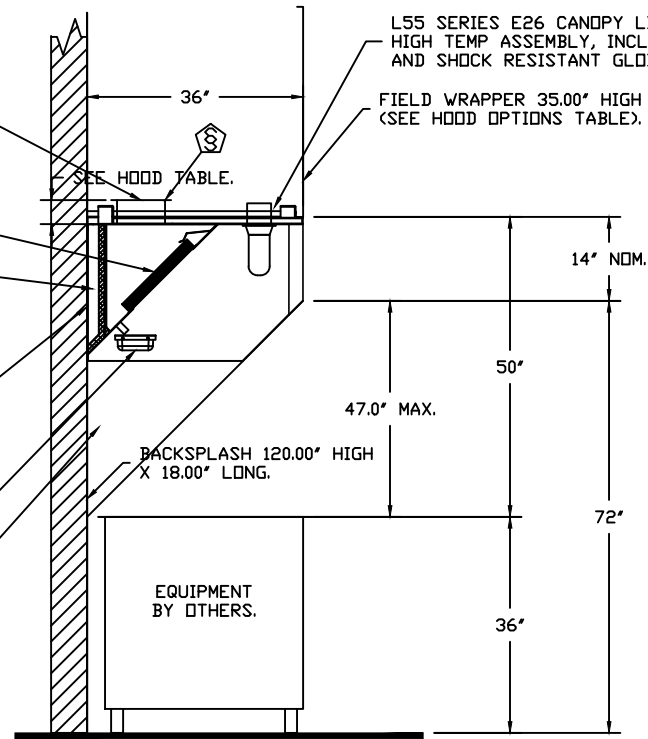
U.L. LISTED L55 SERIES E26 CANOPY  
 LIGHT FIXTURE - HIGH TEMP ASSEMBLY.

PLAN VIEW - HOOD #1 (HD1 FRYER)  
 3' 6.00" LONG 3650BD-2

16" CAPTRATE SOLD  
 1" LAYER OF INSULATION FACTORY  
 INSTALLED IN 3" INTERNAL STANDOFF.  
 MEETS 0 INCH REQUIREMENTS FOR  
 CLEARANCE TO COMBUSTIBLE SURFACES.  
 IT IS THE RESPONSIBILITY  
 OF THE ARCHITECT/OWNER TO  
 ENSURE THAT THE HOOD CLEARANCE  
 FROM LIMITED-COMBUSTIBLE  
 AND COMBUSTIBLE MATERIALS  
 IS IN COMPLIANCE WITH  
 LOCAL CODE REQUIREMENTS.

GREASE DRAIN  
 WITH REMOVABLE CUP.  
 FIELD INSTALLED  
 QUARTER END PANELS.

EXHAUST RISER.

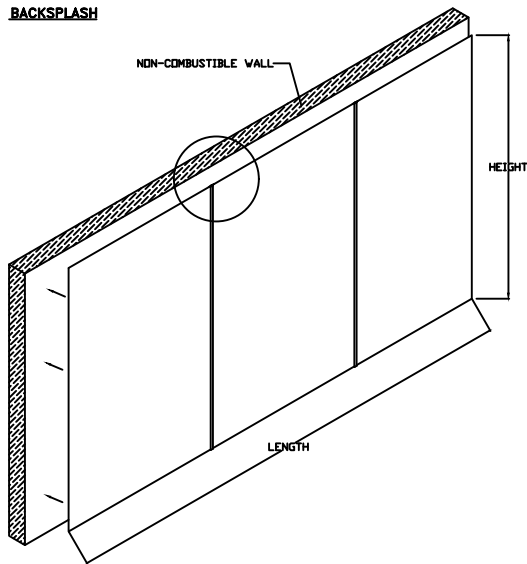


L55 SERIES E26 CANOPY LIGHT FIXTURE -  
 HIGH TEMP ASSEMBLY, INCLUDES CLEAR THERMAL  
 AND SHOCK RESISTANT GLOBE (L55 FIXTURE).

FIELD WRAPPER 35.00" HIGH  
 (SEE HOOD OPTIONS TABLE).

SECTION VIEW - MODEL 3650BD-2  
 HOOD - #1 (HD1 FRYER)

BACKSPLASH



BACKSPLASH PANELS  
 SLIDE INTO DIVIDER  
 BAR

- BACKSPLASH IS NOT  
 INSULATED AND IS UNSUITABLE  
 FOR INSTALL AGAINST  
 COMBUSTIBLE WALLS



**CAPTIVEAIRE**

JOB Skyline Remodel (Richmond, KY)	
LOCATION Richmond, KY, 40475	
DATE 9/6/2023	JOB # 6097446
DWG # 2	DRAWN BY
REV.	SCALE 3/8" = 1'-0"

COILS - JOB#6097446

FAN UNIT NO	TAG	COIL TYPE	DESIGN CFM	COOLING										
				ENTERING DB TEMP	ENTERING WB TEMP	LEAVING DB TEMP	LEAVING WB TEMP	ENTERING FLUID TEMP	LEAVING FLUID TEMP	FLUID FLOW RATE	PERCENT GLYCOL	TOTAL CAPACITY	SENSIBLE CAPACITY	LATENT CAPACITY
2	SF-MPU1	DX	1700	89.0°F	74.0°F	76.7°F	68.6°F	---	---	---	---	33.4 MBH	21.5 MBH	11.9 MBH
HEATING														
ENTERING DB TEMP	LEAVING DB TEMP	ENTERING FLUID TEMP	LEAVING FLUID TEMP	FLUID FLOW RATE	PERCENT GLYCOL	STEAM PRESSURE	TOTAL CAPACITY	SENSIBLE CAPACITY						
---	---	---	---	---	---	---	---	---						

GAS FIRED MAKE-UP AIR UNIT(S)

FAN UNIT NO	TAG	INPUT BTUs	OUTPUT BTUs	TEMP RISE	REQUIRED INPUT GAS PRESSURE	GAS TYPE	BURNER EFFICIENCY(%)
2	SF-MPU1	124302	114358	65°F	7 IN. W.C. - 14 IN. W.C.	NATURAL	92

FAN OPTIONS

FAN UNIT NO	TAG	QTY	DESCRIPTION
1	KEF 1 FRYER	1	GREASE BOX
		1	ECM WIRING PACKAGE - MANUAL OR 0-10VDC REFERENCE SPEED CONTROL -RTC- (TELCO MOTOR), CCW ROTATION
		1	FAN BASE CERAMIC SEAL - INSTALLED AT PLANT - FOR GREASE DUCTS
		1	2 YEAR PARTS WARRANTY
2	SF-MPU1	1	INLET PRESSURE GAUGE, 0-35"
		1	MANIFOLD PRESSURE GAUGE, -5 TO 15" WC
		1	MOTORIZED BACKDRAFT DAMPER FOR A1-D HOUSING - MEETS AMCA CLASS 1A RATING
		1	3 TON SINGLE CIRCUIT MODULAR PACKAGED COOLING OPTION FOR SIZE 1 DF/EH MUA (1,100 TO 1,800 CFM), 208V/230V, 3 PHASE. COOLING THERMOSTAT OR PROGRAMMABLE STAT REQUIRED FOR PROPER OPERATION
		1	DOWNTURN PLENUM FOR SIZE 1 DX COIL MODULE
		1	SEPARATE 120V WIRING PACKAGE (REQUIRED AND USED ONLY FOR DCV OR PREWIRE WITH VFD) - THREE PHASE ONLY
1	2 YEAR PARTS WARRANTY		

FAN ACCESSORIES

FAN UNIT NO	TAG	EXHAUST			SUPPLY			
		GREASE CUP	GRAVITY DAMPER	WALL MOUNT	SIDE DISCHARGE	GRAVITY DAMPER	MOTORIZED DAMPER	WALL MOUNT
1	KEF 1 FRYER	YES						
2	SF-MPU1						YES	

CURB ASSEMBLIES

NO	DN FAN	TAG	WEIGHT	ITEM	SIZE
1	# 1	KEF 1 FRYER	34 LBS	CURB	19.500"W X 19.500"L X 24.000"H VENTED HINGED.
2		MUA CURB ADP	42 LBS	SUPPLY ADAPTER	FROM 80.000" X 32.000" TO 71.000" X 21.000" X 3.000"H.
3		RAIL	20 LBS	RAIL	6.000"W X 21.000"L X 19.000"H.

FEATURES:

- DIRECT DRIVE CONSTRUCTION (NO BELTS/PULLEYS).
- ROOF MOUNTED FANS.
- RESTAURANT MODEL.
- UL705 AND UL762 AND ULC-S645
- VARIABLE SPEED CONTROL.
- INTERNAL WIRING.
- THERMAL OVERLOAD PROTECTION (SINGLE PHASE).
- HIGH HEAT OPERATION 300°F (149°C).
- GREASE CLASSIFICATION TESTING.
- NEMA 3R SAFETY DISCONNECT SWITCH.

NORMAL TEMPERATURE TEST

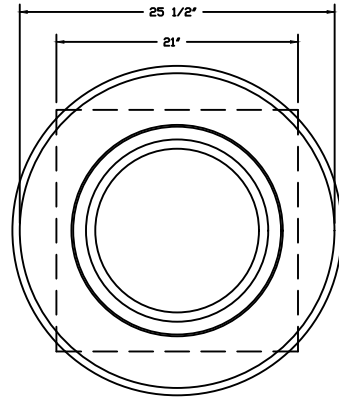
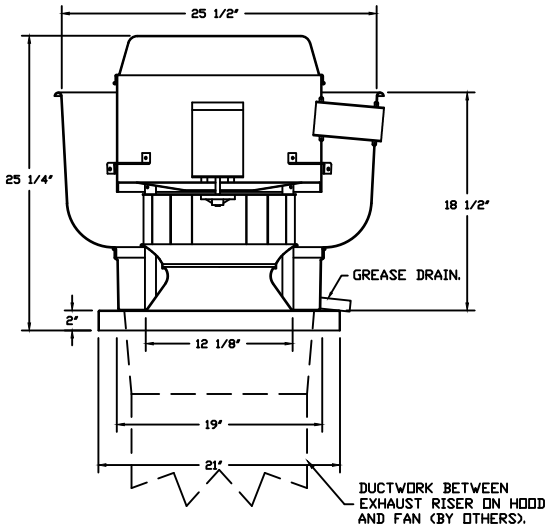
EXHAUST FAN MUST OPERATE CONTINUOUSLY WHILE EXHAUSTING AIR AT 300°F (149°C) UNTIL ALL FAN PARTS HAVE REACHED THERMAL EQUILIBRIUM, AND WITHOUT ANY DETERIORATING EFFECTS TO THE FAN WHICH WOULD CAUSE UNSAFE OPERATION.

ABNORMAL FLARE-UP TEST

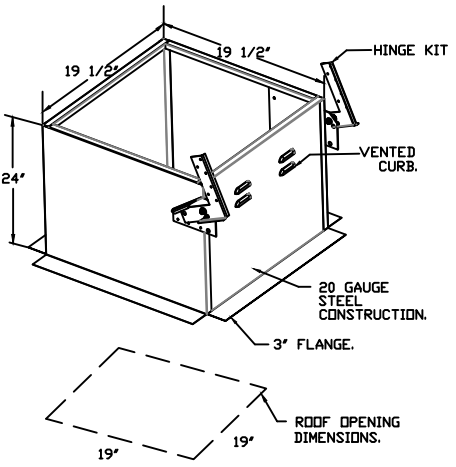
EXHAUST FAN MUST OPERATE CONTINUOUSLY WHILE EXHAUSTING BURNING GREASE VAPORS AT 600°F (316°C) FOR A PERIOD OF 15 MINUTES WITHOUT THE FAN BECOMING DAMAGED TO ANY EXTENT THAT COULD CAUSE AN UNSAFE CONDITION.

OPTIONS

- GREASE BOX.
- ECM WIRING PACKAGE - MANUAL OR 0-10VDC REFERENCE SPEED CONTROL -RTC- (TELCO MOTOR), CCW ROTATION.
- FAN BASE CERAMIC SEAL - INSTALLED AT PLANT - FOR GREASE DUCTS.
- 2 YEAR PARTS WARRANTY.



TOP VIEW



JOB Skyline Remodel (Richmond, KY)	
LOCATION Richmond, KY, 40475	
DATE 9/6/2023	JOB # 6097446
DWG # 3	DRAWN BY
REV.	SCALE 3/8" = 1'-0"



**GREASE DUCT & CHIMNEY SPECIFICATIONS:**

PROVIDE GREASE DUCT EQUAL TO CAPTIVEAIRE SYSTEMS MODEL "DW" ROUND 20 GAUGE 430 STAINLESS STEEL DUCTWORK. MODEL "DW" IS LISTED TO UL-1978 AND IS INSTALLED USING "V" CLAMP LOCKING CONNECTIONS SEALED WITH 3M FIRE BARRIER 2000 PLUS. MODEL "DW" DOES NOT REQUIRE WELDING PROVIDING IT HAS BEEN INSTALLED PER THE MANUFACTURES INSTALLATION GUIDE.

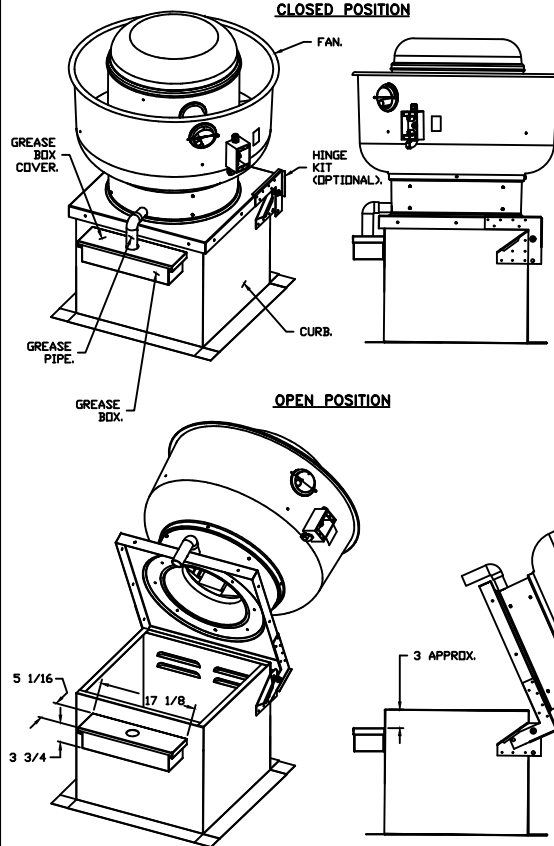
PROVIDE RATED ACCESS DOORS AT EVERY CHANGE IN DIRECTION AND EVERY 12' ON CENTER. PER MANUFACTURES LISTING MODEL "DW" HORIZONTAL RUNS LESS THAN 75 FT. CAN BE SLOPED 1/16" PER 12", HORIZONTAL RUNS MORE THAN 75 FT. CAN BE SLOPED 3/16" PER 12". DUCT SHOULD BE SLOPED AS MUCH AS POSSIBLE TO REDUCE THE CHANCE OF GREASE ACCUMULATION IN HORIZONTAL RUNS.

IF THE DUCT OR CHIMNEY IS WITHIN 18 INCHES OF COMBUSTIBLE MATERIAL, PROVIDE UL-2221 OR UL-103 HT LISTED DOUBLE WALL GREASE DUCT OR DOUBLE WALL CHIMNEY EQUAL TO CAPTIVEAIRE SYSTEMS MODEL "DW- 2R, 2R TYPE HT, 3R, OR 3Z" ROUND 20 GAUGE 430 STAINLESS INNER DUCT INSULATED WITH A 24 GAUGE 430 STAINLESS OUTER SHELL.

**CUSTOMER APPROVAL TO MANUFACTURE:**

APPROVED AS NOTED	<input type="checkbox"/>
APPROVED WITH NO EXCEPTION TAKEN	<input type="checkbox"/>
REVISE AND RESUBMIT	<input type="checkbox"/>
SIGNATURE _____	
YOUR TITLE _____	DATE _____

**GREASE BOX INSTALLATION**



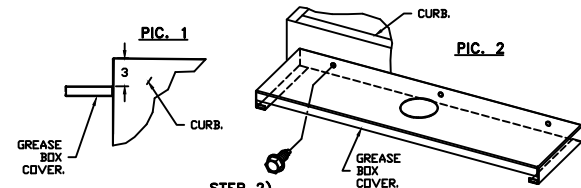
**PARTS INCLUDED**

- GREASE BOX.
- GREASE BOX COVER.
- GREASE PIPE.
- SHEET METAL SCREWS
- 3 - LONG (3/4" LG.).

**GREASE BOX FIELD INSTALLATION**

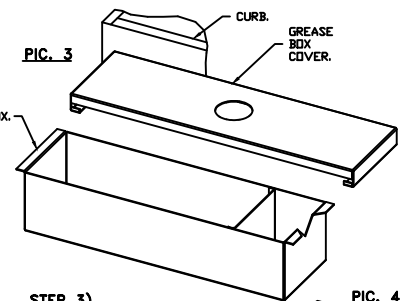
**STEP 1)**

ATTACH GREASE BOX COVER TO THE CURB, HOLD 3" DIMENSION AS SHOWN ON PIC. 1. SCREW GREASE BOX COVER TO CURB USING (3) LONG (3/4" LG.) SCREWS AS SHOWN ON PIC. 2.



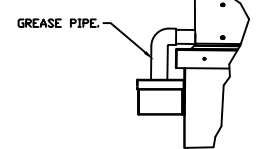
**STEP 2)**

ATTACH GREASE BOX TO GREASE BOX COVER, SLIDE AND DROP. AS SHOWN ON PIC. 3.



**STEP 3)**

INSTALL GREASE PIPE AS SHOWN ON PIC. 4.



\*NOTE: UL 705 INSTALL.



JOB Skyline Remodel (Richmond, KY)	
LOCATION Richmond, KY, 40475	
DATE 9/6/2023	JOB # 6097446
DWG # 4	DRAWN BY
REV.	SCALE 3/8" = 1'-0"

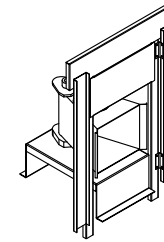
**FAN #2 A1-D250-15D-MPU - HEATER (SF-MPU)**

1. DIRECT GAS FIRED HEATED MAKE UP AIR UNIT WITH 15" MIXED FLOW DIRECT DRIVE FAN.
2. INTAKE HOOD WITH EZ FILTERS.
3. DOWN DISCHARGE - AIR FLOW RIGHT -> LEFT.
4. GAS PRESSURE GAUGE, 0-35", 2.5" DIAMETER, 1/4" THREAD SIZE.
5. GAS PRESSURE GAUGE, -5 TO +15 INCHES WC., 2.5" DIAMETER, 1/4" THREAD SIZE.
6. MOTORIZED BACK DRAFT DAMPER 16" X 18" FOR SIZE 1 STANDARD & MODULAR HEATER UNITS W/EXTENDED SHAFT, STANDARD GALVANIZED CONSTRUCTION, 3/4" REAR FLANGE, LOW LEAKAGE, TF8120S ACTUATOR INCLUDED.
7. 3 TON, SINGLE CIRCUIT MODULAR PACKAGED COOLING OPTION FOR SIZE 1 DF/EH MODULAR PACKAGED UNIT. INCLUDES CONDENSER, DX COIL, FILTER/DRYER KIT, THERMAL EXPANSION VALVE, R410A REFRIGERANT, AND REFRIGERANT PIPING (1,100 TO 1,800 CFM) WHEN ORDERED WITH OPPOSITE AIRFLOW CONDENSERS ACCESS AND COIL PIPING WILL REMAIN IN STANDARD POSITION. DRAIN AND SLEDS WILL MOVE TO THE OPPOSITE SIDE, ANY OTHER CHANGE WILL REQUIRE CLI CONDENSERS REQUIRE SEPARATE 208V, 3 PHASE POWER SUPPLY UNLESS ORDERED WITH SINGLE POINT CONNECTION. COIL = 2E2100IN.
8. DOWNTURN PLENUM FOR SIZE 1 COOLING COIL MODULE - REQUIRED FOR DOWN DISCHARGE COOLING COIL APPLICATIONS.
9. SEPARATE 120VAC WIRING PACKAGE FOR MAKE-UP AIR UNITS. OPTION MUST BE SELECTED WHEN MOUNTING VFD IN PREWIRE PANEL OR WITH DCV PACKAGE. PROVIDES SEPARATE 120VAC INPUT TO SUPPLY FAN. THIS 120V SIGNAL MUST BE RUN BY ELECTRICIAN FROM DCV TO MUA SWITCH.
10. HINGED DOUBLE WALL INSULATED DOOR ASSEMBLY (BURNER/BLOWER/MPU SECTION).
11. 2 YEAR PARTS WARRANTY

\*NOTE: SUPPLY DUCT MUST BE INSTALLED TO MEET SHACMA STANDARDS. A MINIMUM STRAIGHT DUCT LENGTH MUST BE MAINTAINED DOWNSTREAM OF UNIT DISCHARGE AS OUTLINED IN ANCA PUBLICATION 201. WHEN USING RECTANGULAR DUCTWORK, ELBOWS MUST BE RADIUS THROAT, RADIUS BACK WITH TURNING VANES. FLEXIBLE DUCTWORK AND SQUARE THROAT/SQUARE BACK ELBOWS SHOULD NOT BE USED. ANY TRANSITION AND/OR TURNS IN THE DUCTWORK WILL CAUSE SYSTEM EFFECT. SYSTEM EFFECT WILL DRASTICALLY INCREASE STATIC PRESSURE AND REDUCE AIRFLOW. DO NOT RELY ON UNIT TO SUPPORT DUCT IN ANY WAY. FAILURE TO PROPERLY SIZE DUCTWORK MAY CAUSE SYSTEM EFFECTS AND REDUCE PERFORMANCE OF THE EQUIPMENT. SUGGESTED STRAIGHT DUCT SIZE IS 14" X 14".

**SUPPLY SIDE HEATER INFORMATION**

WINTER TEMPERATURE = 10°F. TEMP. RISE = 65°F.  
 BTUS CALCULATED OFF ACTUAL AIR DENSITY.  
 OUTPUT BTUS AT ALTITUDE OF 0.0 FT. = 118052.  
 INPUT BTUS AT ALTITUDE OF 0.0 FT. = 128317.  
 OUTPUT BTUS AT ALTITUDE OF 877 FT. = 114358.  
 INPUT BTUS AT ALTITUDE OF 877 FT. = 124302.



**DIRECT FIRED (DF) PROFILE PLATE ASSEMBLY**

**DIRECT FIRED PROFILE PLATE SPECIFICATIONS:**

**DESCRIPTION:**

DIRECT FIRED BURNERS SHALL HAVE PATENTED (US PATENT NO. US6629523B2), SELF-ADJUSTING PROFILE PLATES DESIGNED TO ENSURE PROPER AIR VELOCITY AND PRESSURE DROP ACROSS THE BURNER. PROFILE PLATES SHALL ALLOW BURNERS TO ACHIEVE CLEAN COMBUSTION BY LIMITING BY-PRODUCT LEVELS TO A MAXIMUM OF 5PPM OF CARBON MONOXIDE (CO), AND 0.5PPM OF NITROGEN DIOXIDE (NO2) DIRECT FIRED UNITS SHALL BE CONFIGURED WITH THE BLOWER MOUNTED DOWNSTREAM OF THE BURNER. THIS ARRANGEMENT WILL ENSURE A CONSISTENT AIRFLOW, REGARDLESS OF INLET AIR TEMPERATURE.

**APPLICATION:**

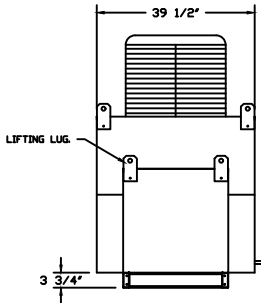
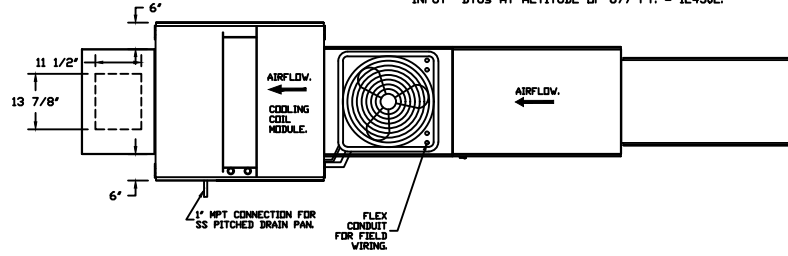
SPRING-LOADED BURNER PROFILE PLATES ARE ENGINEERED TO AUTOMATICALLY REACT TO THE MOMENTUM OF A FRESH AIR STREAM, WITHOUT THE NEED FOR ANY MOTORS OR ACTUATORS TO MECHANICALLY ADJUST THEM. WITH THIS FEATURE, ALL DF UNITS ARE DESIGNED FOR DEMAND CONTROL VENTILATION (DCV) REQUIREMENTS.

**CERTIFICATIONS:**

ALL PROFILE PLATE ASSEMBLIES SHALL BE INCLUDED IN THE DF UNIT'S ETL LISTING AND COMPLY WITH COMBINED SAFETY STANDARDS ANSI Z83.4 AND CSA 3.7 (NON-RECIRCULATING DF HEATERS) AND ANSI Z83.18 (RECIRCULATING DF HEATERS).

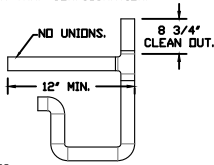
**GENERAL CONSTRUCTION:**

- PROFILE PLATES SHALL BE FORMED FROM G90 GALVANIZED STEEL.
- PROFILE PLATES SHALL VARY IN SIZE PER UNIT.
- PROFILE PLATES SHALL BE MOUNTED ALONG THE SAME PLANE AS THE DISCHARGE OF THE BURNER.
- DESIGN SHALL INCORPORATE PROPERLY TORQUED, PERMANENTLY MOUNTED SPRING HINGES.
- SPRING HINGES SHALL BE MADE FROM PLATED STEEL.



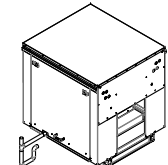
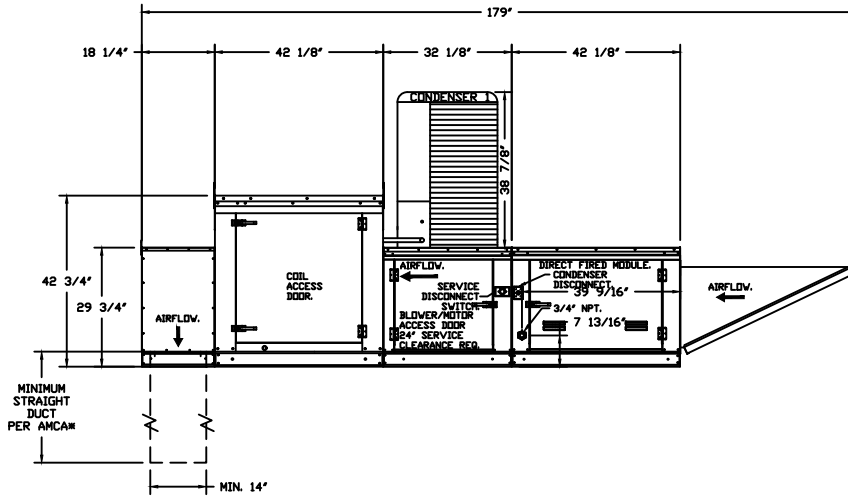
**TYPICAL DRAIN TRAP INSTALL**

**RECOMMENDED COOLING COIL DRAIN TRAP CONFIGURATION**

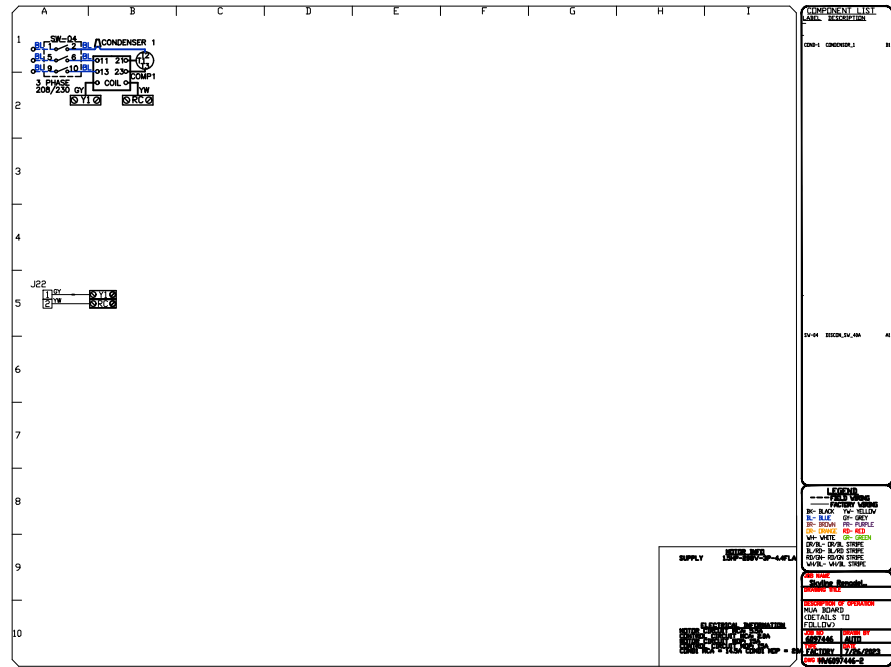
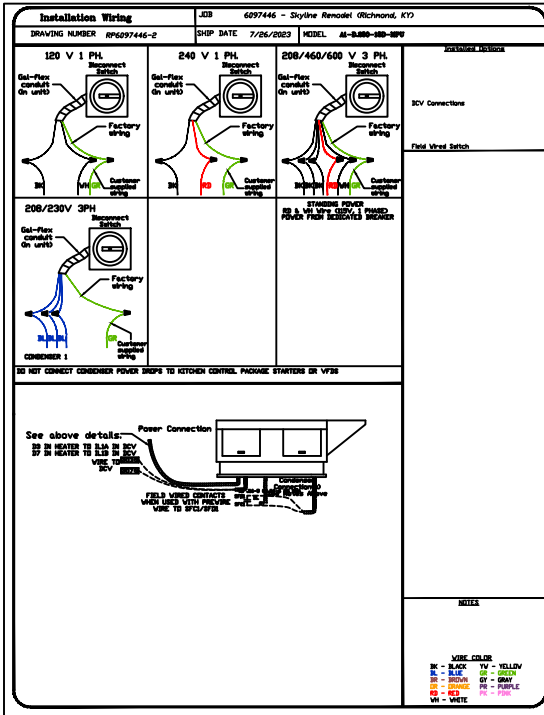
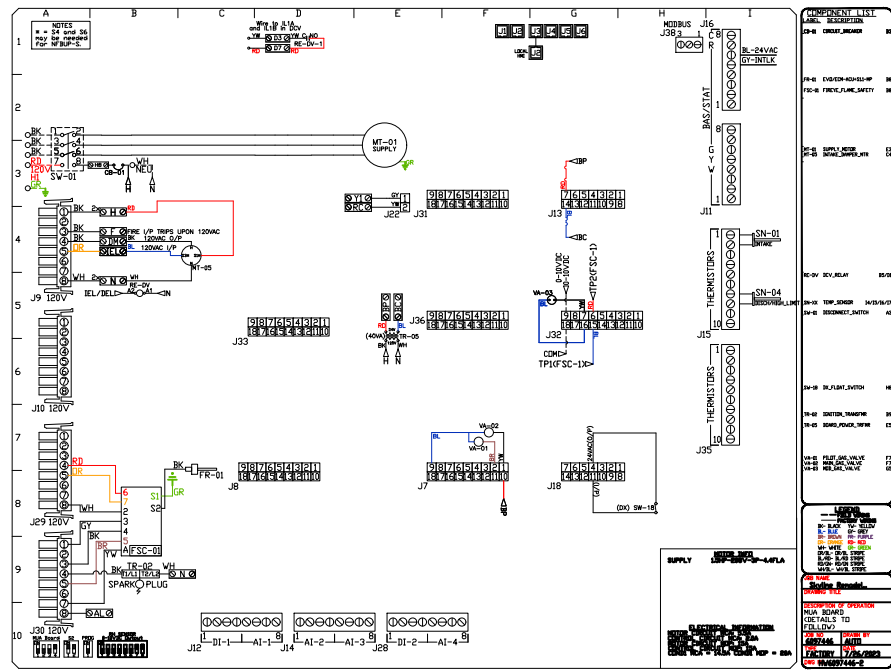
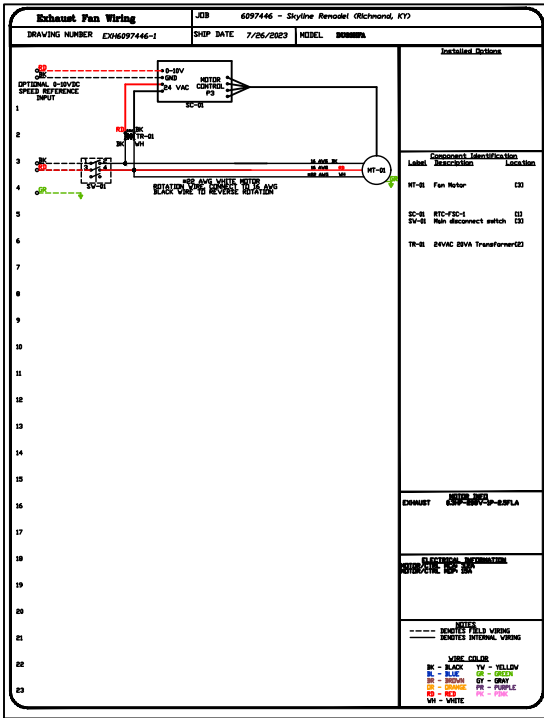


**NOTES:**

- 1) 1" DIAMETER PVC PIPE ONLY.
- 2) USE ONLY LOW PROFILE COUPLINGS.
- 3) ADD CLEAN OUT AS SHOWN.



<b>JOB</b> Skyline Remodel (Richmond, KY)	
<b>LOCATION</b> Richmond, KY, 40475	
<b>DATE</b> 9/6/2023	<b>JOB #</b> 6097446
<b>DWG #</b> 5	<b>DRAWN BY</b>
<b>REV.</b>	<b>SCALE</b> 1/4" = 1'-0"



JOB Skyline Remodel (Richmond, KY)	
LOCATION Richmond, KY, 40475	
DATE 9/6/2023	JOB # 6097446
DWG # 7	DRAWN BY
REV.	SCALE 1/4" = 1'-0"