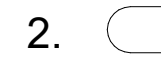
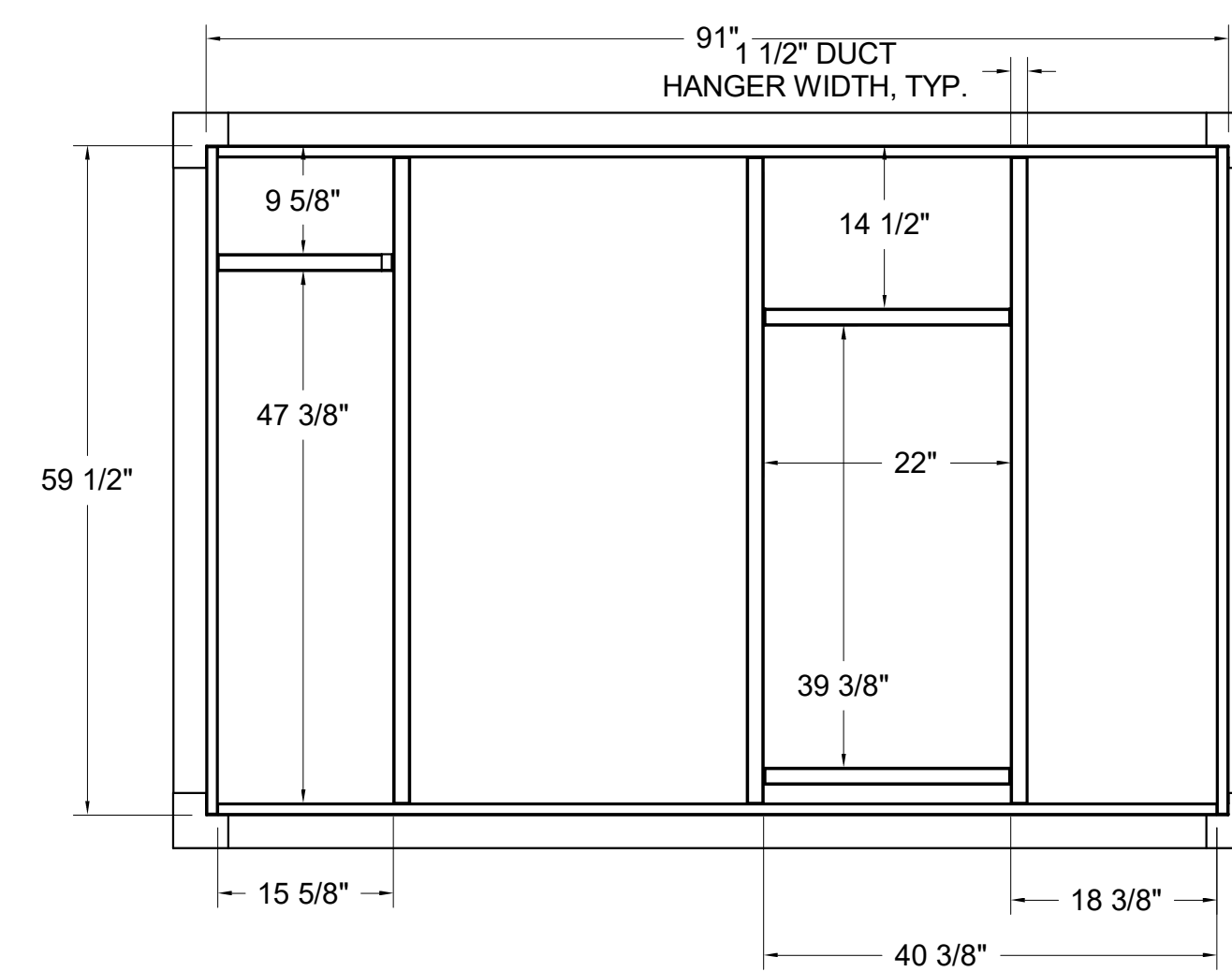
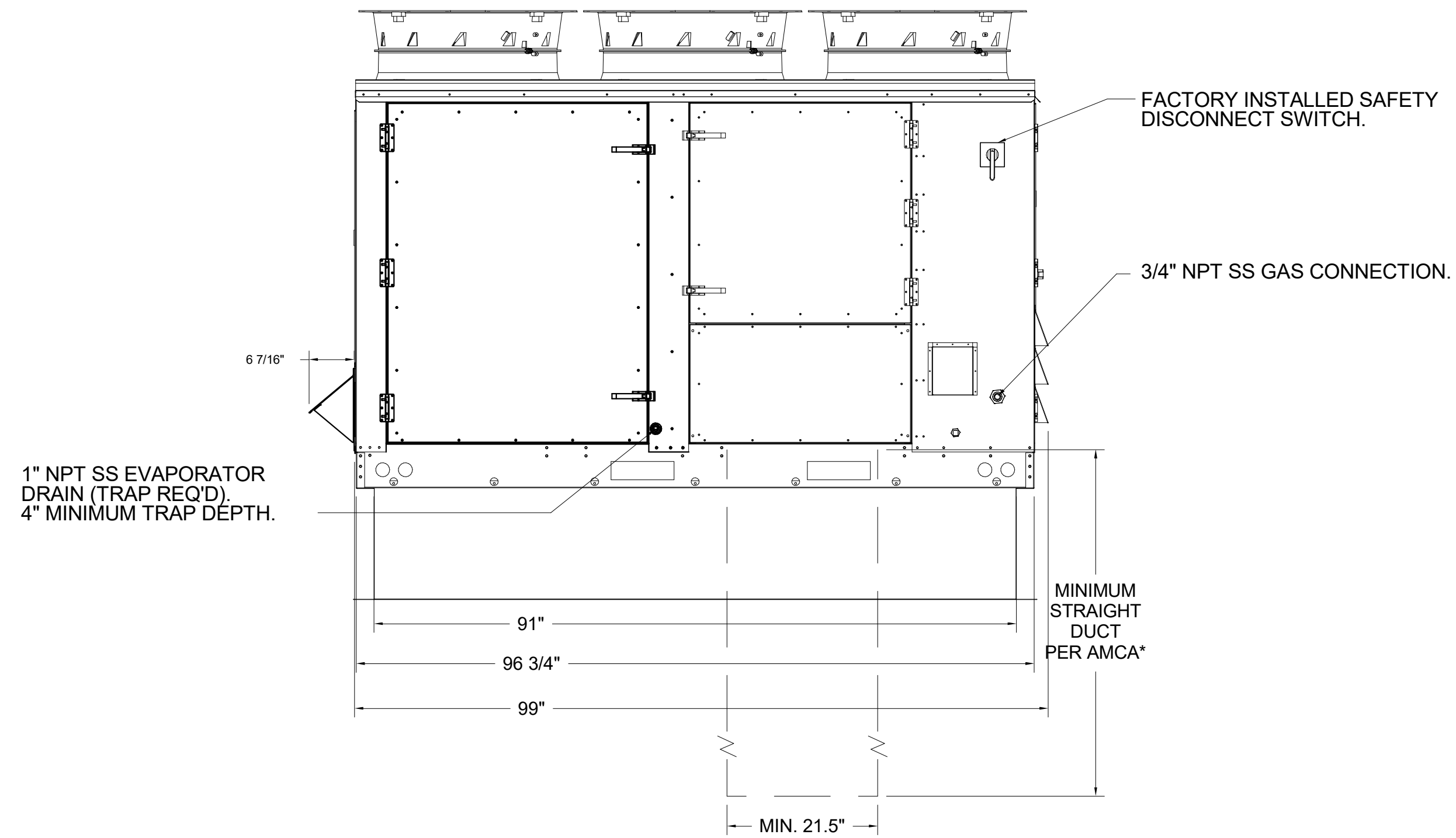
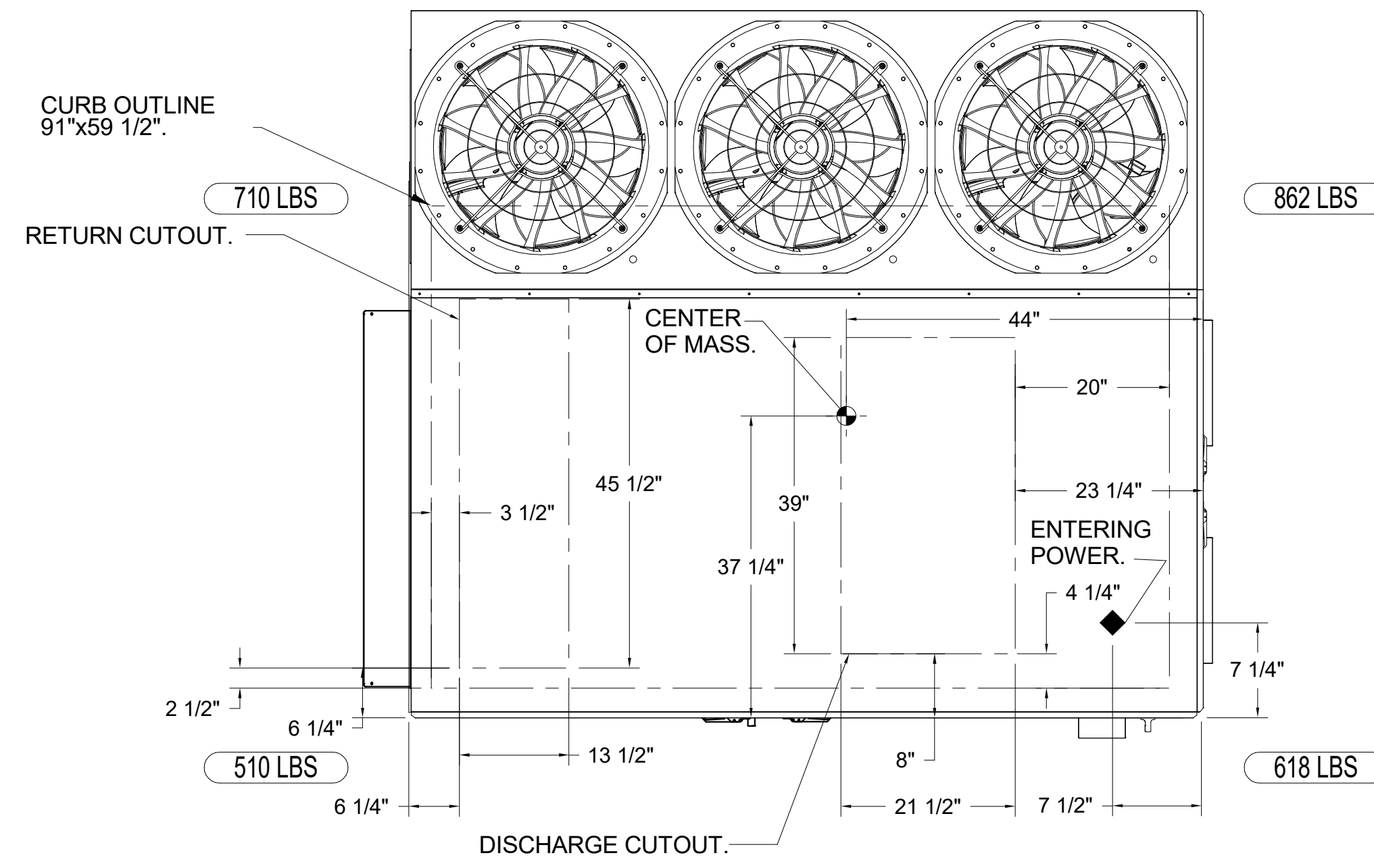
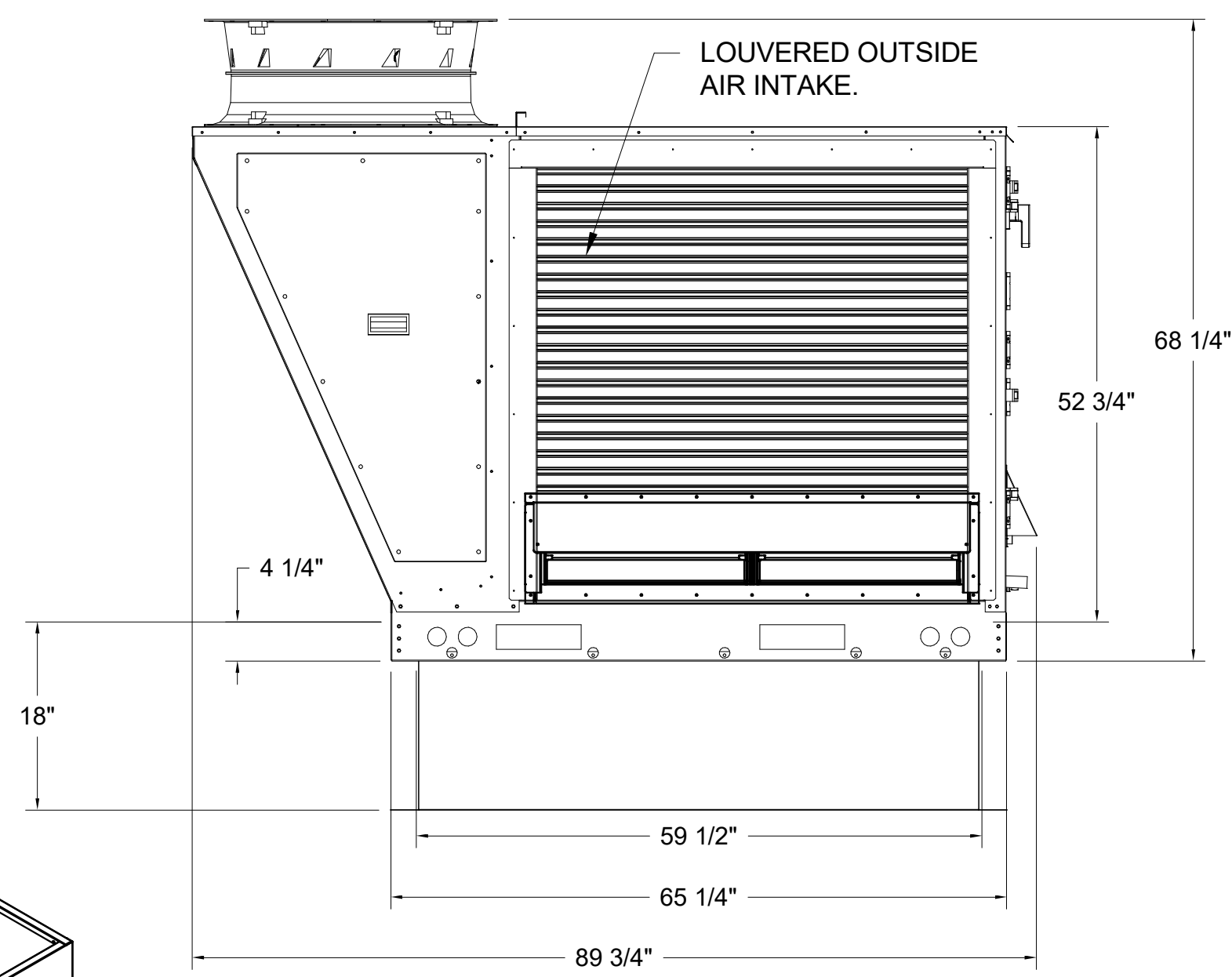
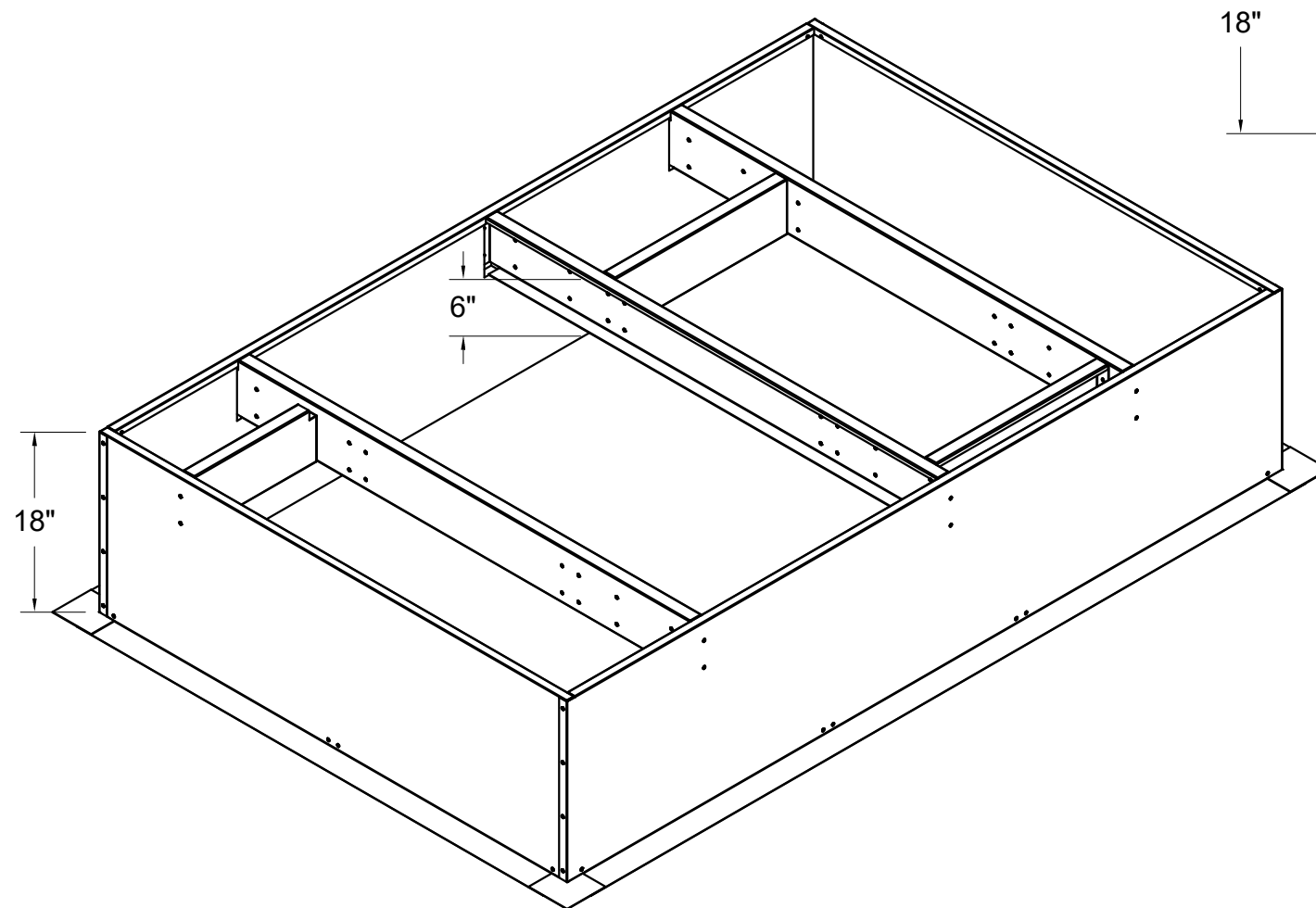
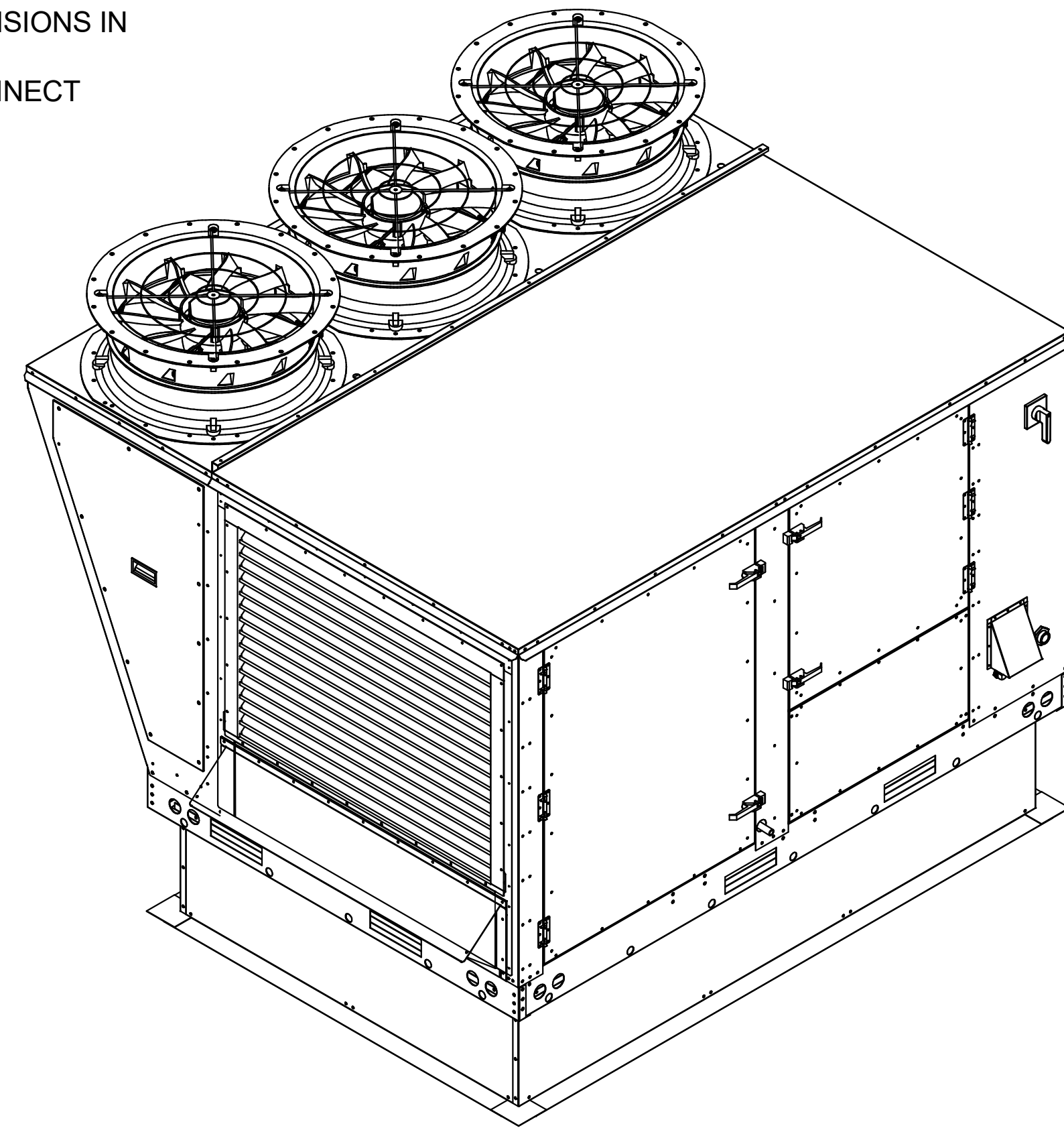


FAN #9 (RTU3-DINING/REST), #10 (RTU4-DINING/BAR) -
CASRTU3-I.200-20-20T HEATER

- NOTES:
- DO NOT OBSTRUCT OUTSIDE AIR INLET, OUTSIDE AIR COIL OR OUTSIDE AIR FAN.
 -  DENOTES CORNER WEIGHT.
 - ROOF OPENING MUST BE 2" SMALLER THAN CURB DIMENSIONS IN BOTH DIRECTIONS.
 - CONNECTION FROM BREAKER TO UNITS SAFETY DISCONNECT SWITCH TO BE COPPER WIRE ONLY.

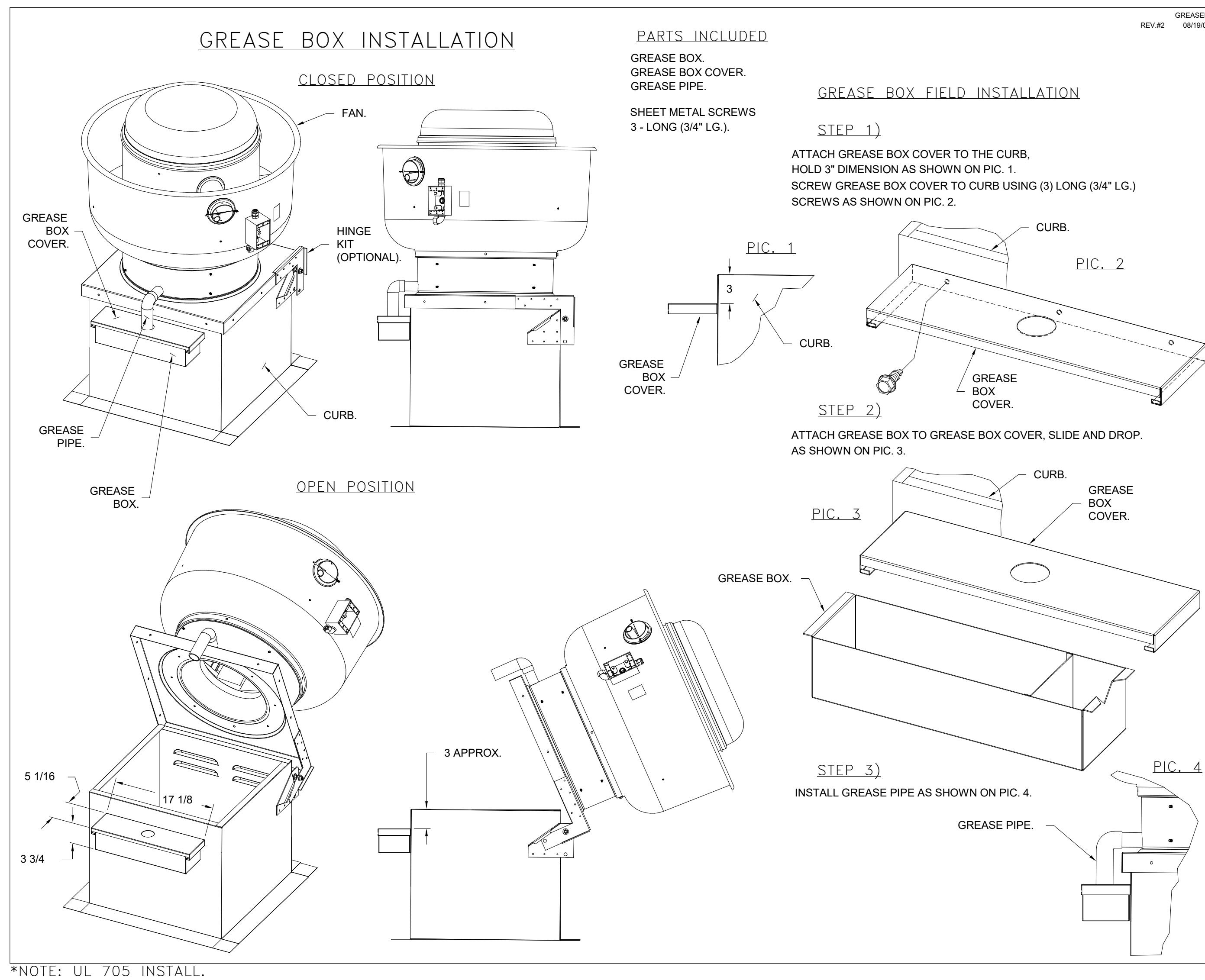
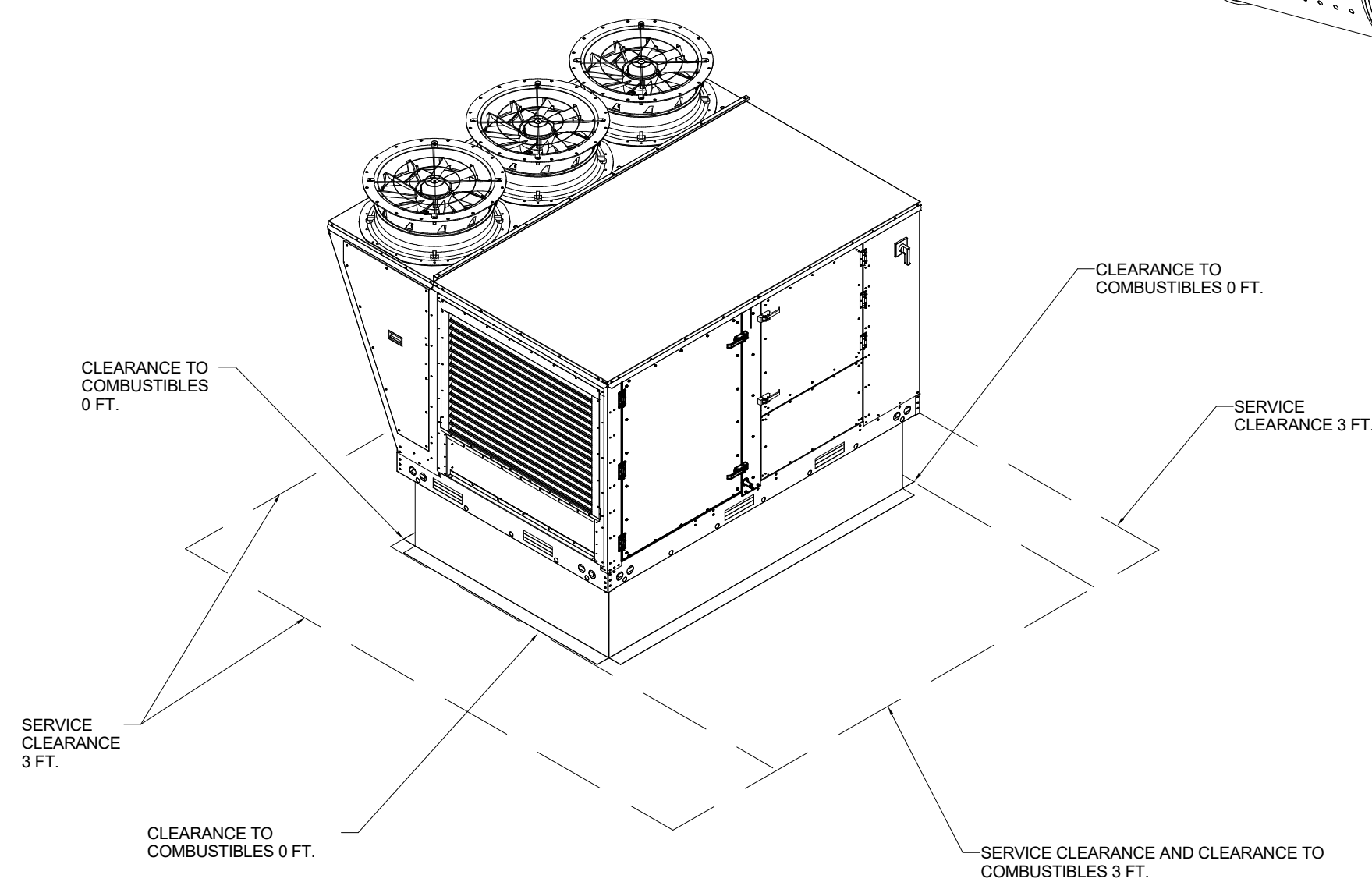
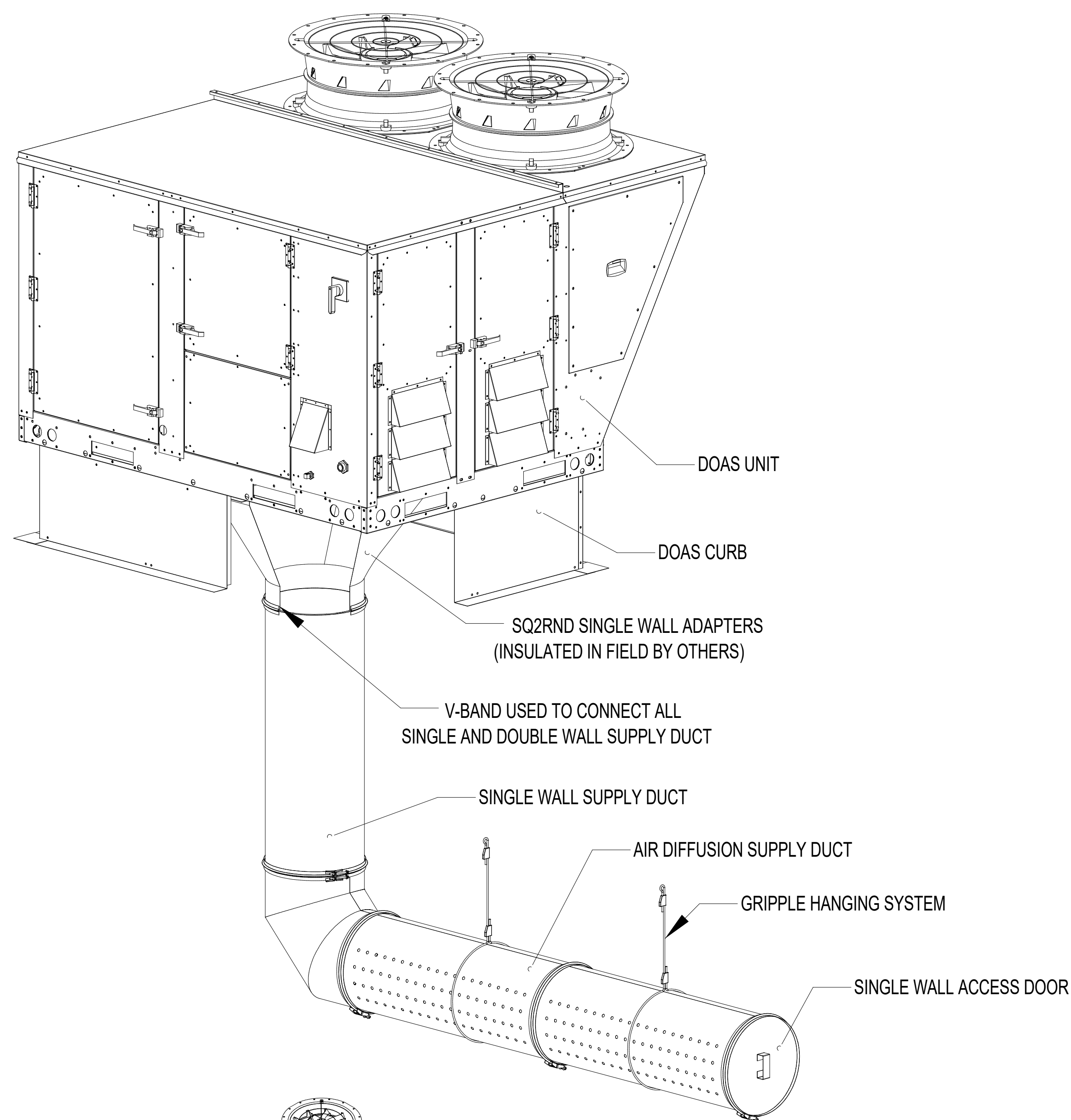


CAPTIVE

Missouri Specialized Accounts
23010 Lieutenant Ave., Foley, AL 36535 PHONE: (314) 605-5316 FAX: 9195 687730 EMAIL: reg40@captiveaire.com

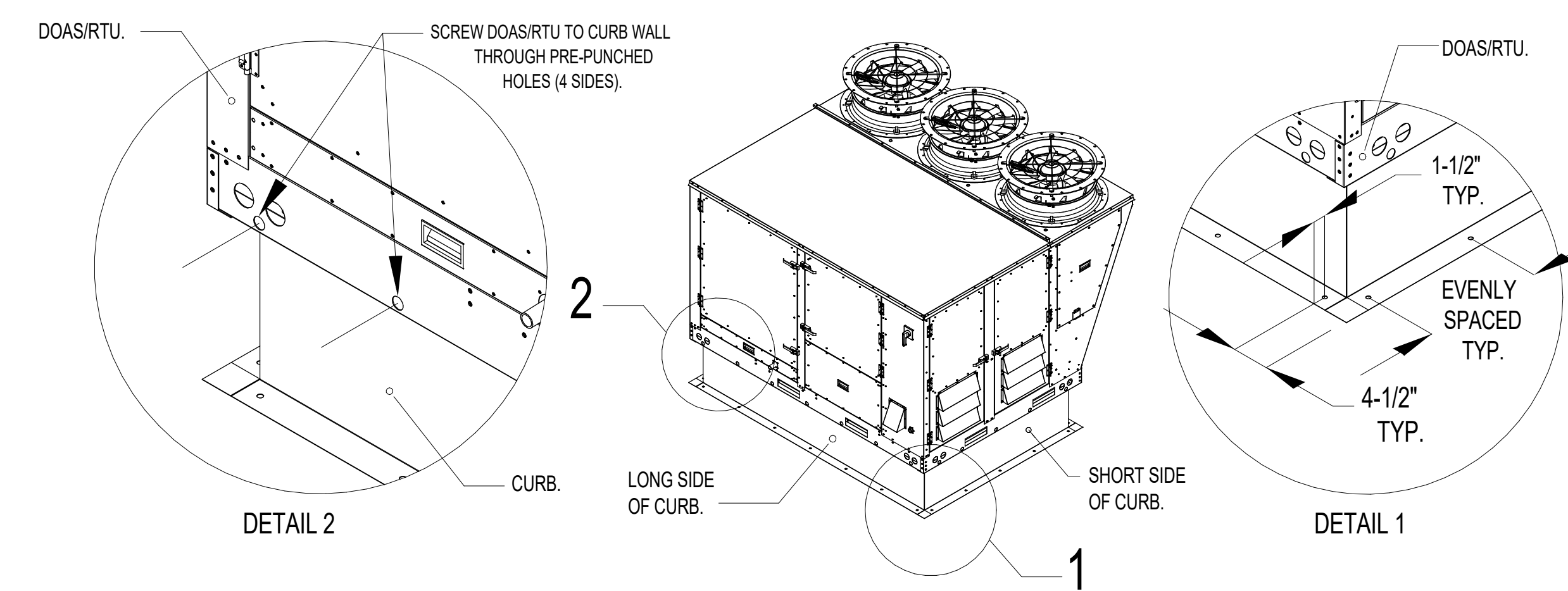
PORTILLO'S GRAPEVINE
460 W. STATE HWY 114
GRAPEVINE, TX 76051

2/27/2024
6645848
SJDSR
3/4" = 1'-0"
MASTER DRAWING



TYPICAL DOAS/RTU ROOF MOUNTING INSTALLATION INSTRUCTIONS

- SECURE THE CURB TO THE ROOF FRAMING MEMBERS BY DRILLING 1/4" PLOT HOLES IN THE CURB FLANGES AT LOCATIONS SHOWN IN THE DIAGRAM BELOW. USING 3/8" X 2" ZINC PLATED STEEL LAG BOLTS, AND ZINC PLATED WASHERS, SCREW THROUGH THE CURB FLANGES AND INTO THE ROOF FRAMING MEMBERS. A MINIMUM OF (5) LAG BOLTS ON EACH SHORT SIDE, AND (7) LAG BOLTS ON EACH LONG SIDE IS REQUIRED.
- SECURE THE UNIT BASE TO THE SIDE WALLS OF THE CURB USING (24) 1/4"-14 X 2" SELF-DRILLING, STEEL ZINC PLATED SCREWS. PRE-PUNCHED HOLES HAVE BEEN PROVIDED FOR EACH SCREW LOCATION.



CAPTIVE

Missouri Specialized Accounts

23010 Lieutenant Ave., Foley, AL 36535 PHONE: (314) 605-5316 FAX: 9195168730 EMAIL: rep49@captiveaire.com

PORTILLO'S GRAPEVINE
460 W. STATE HWY 114
GRAPEVINE, TX 76051

	2/27/2024		
	6645848		
	SJDSR		
	3/4" = 1'-0"		
	MASTER DRAWING		
	10		

PROJECT CONTACT:
NAME:
PHONE:
EMAIL:

SEAL:

TBPE FIRM REGISTRATION
F - 8398
STATE OF TEXAS
REGISTERED PROFESSIONAL ENGINEER
102100
MICHAEL TRAHAN
LICENSED
MECHANICAL ENGINEER

06-21-2024

CONSULTANT:

10725 SANDHILL ROAD
DALLAS, TEXAS 75228
O: 214-343-9400
dimensiongroup.com

HOT DOGS - BEEF - BURGERS - SALADS

PROJECT NAME: **PORTILLO'S RESTAURANT**
STORE #:
DRAWING STATUS: ISSUED FOR CONSTRUCTION
PROJECT ADDRESS: 460 W STATE HWY 114
GRAPEVINE, TX 76051

REV.	DATE	BY	DESCRIPTION

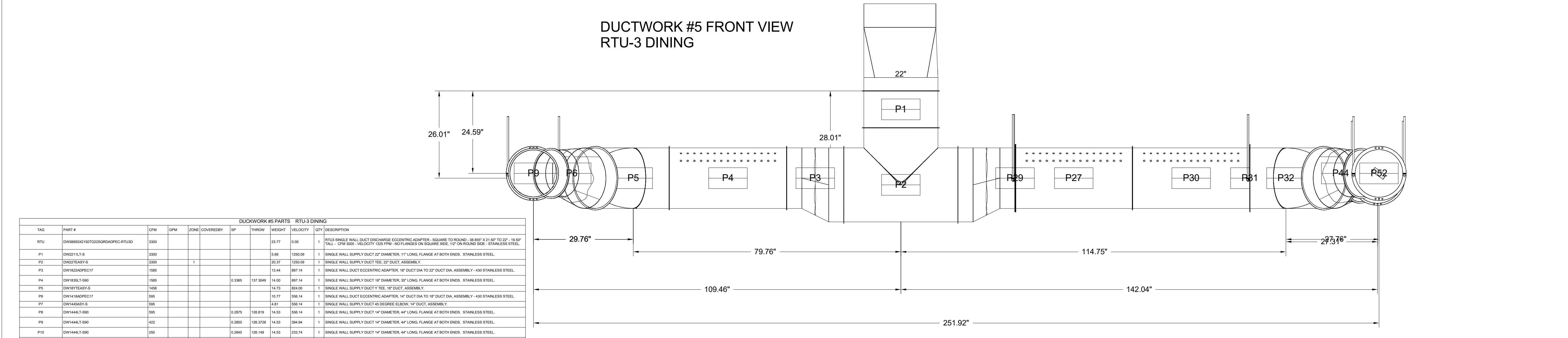
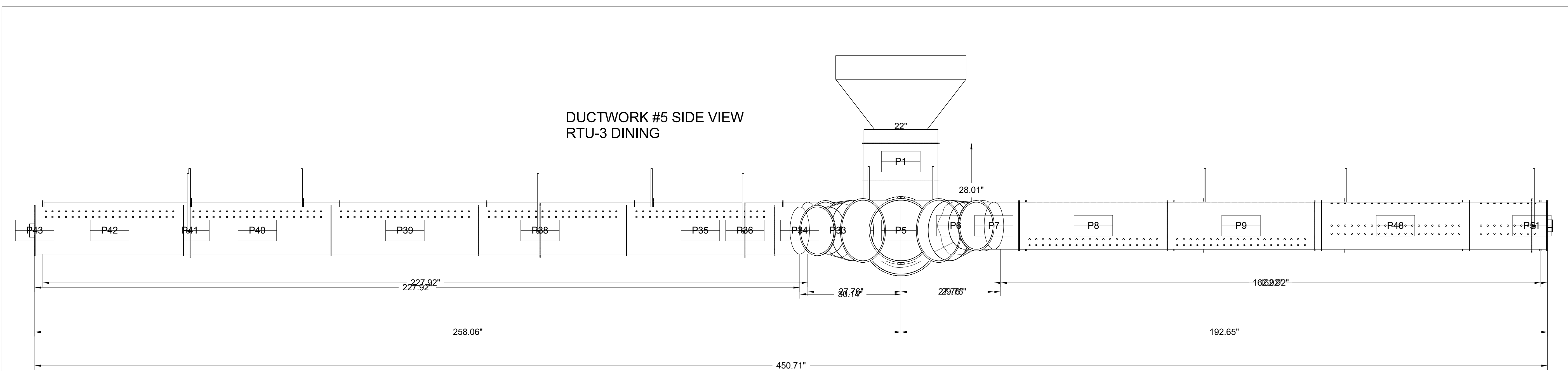
ISSUE DATE: 03.05.2024
DRAWN BY: Author
CHECKED BY: Checker

PROJECT #: PHD23001.0
SHEET TITLE:

CAPTIVE AIRE
SHEET NUMBER:

M6-10

REV.	DATE	DESCRIPTION



TAG	PART #	QTY	UOM	ZONE	CATEGORY	SP	THROW	WEIGHT	VELOCITY	QTY DESCRIPTION
P1	DNW0001002000R0000R0000	3300					25.77	0.06	1	INTERIOR WALL DUCT DISCHARGE ADAPTER - SQUARE TO ROUND - 18.88" X 11" X 10" X 10" - 18.88" TALL - CON. 3000 - VELOCITY 1000 FPM - NO FLANGES ON SQUARE SIDE - 1/2" ON ROUND SIDE - STAINLESS STEEL
P2	DNW0001002000R0000R0000	2000					25.77	100.00	1	SINGLE WALL SUPPLY DUCT 24" DIA. ASSEMBLY - 430 STAINLESS STEEL
P3	DNW0001002000R0000R0000	1000					13.44	807.14	1	SINGLE WALL DUCT ECCENTRIC ADAPTER - 1/2" DUCT DIA TO 24" DUCT DIA. ASSEMBLY - 430 STAINLESS STEEL
P4	DNW0001002000R0000R0000	1000					0.3905	107.340	1	SINGLE WALL SUPPLY DUCT 1/2" DIA. LONG PLANGE AT BOTH ENDS - STAINLESS STEEL
P5	DNW0001002000R0000R0000	1000					14.75	804.00	1	SINGLE WALL SUPPLY DUCT 1/2" DIA. DUCT ASSEMBLY
P6	DNW0001002000R0000R0000	3000					14.77	306.14	1	SINGLE WALL DUCT ECCENTRIC ADAPTER - 1/2" DUCT DIA TO 1/2" DUCT DIA. ASSEMBLY - 430 STAINLESS STEEL
P7	DNW0001002000R0000R0000	300					4.81	506.14	1	SINGLE WALL SUPPLY DUCT 45 DEGREE ELBOW - 1/2" DUCT ASSEMBLY
P8	DNW0001002000R0000R0000	300					0.3975	108.918	1	SINGLE WALL SUPPLY DUCT 1/2" DIA. LONG PLANGE AT BOTH ENDS - STAINLESS STEEL
P9	DNW0001002000R0000R0000	400					0.2855	108.358	1	SINGLE WALL SUPPLY DUCT 1/2" DIA. LONG PLANGE AT BOTH ENDS - STAINLESS STEEL
P10	DNW0001002000R0000R0000	200					0.2844	108.148	1	SINGLE WALL SUPPLY DUCT 1/2" DIA. LONG PLANGE AT BOTH ENDS - STAINLESS STEEL
P11	DNW0001002000R0000R0000	70					0.2844	108.148	1	SINGLE WALL SUPPLY DUCT 1/2" DIA. LONG PLANGE AT BOTH ENDS - STAINLESS STEEL
P12	DNW0001002000R0000R0000	240					2.40		1	DUCT ACCESS DOOR WITH HANDLE - FOR 1/2" DUCT USE - 1/2" DOOR - STAINLESS STEEL
P13	DNW0001002000R0000R0000	200					2.00		1	SUPPLY DUCT LONG SUSPENSION SYSTEM - 1/2" APPROVED - (SUPPORT NO. 200) (SINGLE COOP HANGER - GALVANNEZED STEEL)
P14	DNW0001002000R0000R0000	800					14.77	804.00	1	SINGLE WALL DUCT ECCENTRIC ADAPTER - 1/2" DUCT DIA TO 1/2" DUCT DIA. ASSEMBLY - 430 STAINLESS STEEL
P15	DNW0001002000R0000R0000	800					4.81	806.99	1	SINGLE WALL SUPPLY DUCT 45 DEGREE ELBOW - 1/2" DUCT ASSEMBLY
P16	DNW0001002000R0000R0000	800					0.3945	108.360	1	SINGLE WALL SUPPLY DUCT 1/2" DIA. LONG PLANGE AT BOTH ENDS - STAINLESS STEEL
P17	DNW0001002000R0000R0000	200					2.00		1	SUPPLY DUCT LONG SUSPENSION SYSTEM - 1/2" APPROVED - (SUPPORT NO. 200) (SINGLE COOP HANGER - GALVANNEZED STEEL)
P18	DNW0001002000R0000R0000	800					0.3945	107.406	1	SINGLE WALL SUPPLY DUCT 1/2" DIA. LONG PLANGE AT BOTH ENDS - STAINLESS STEEL
P19	DNW0001002000R0000R0000	317					0.2975	108.918	1	SINGLE WALL SUPPLY DUCT 1/2" DIA. LONG PLANGE AT BOTH ENDS - STAINLESS STEEL
P20	DNW0001002000R0000R0000	345					0.2855	108.358	1	SINGLE WALL SUPPLY DUCT 1/2" DIA. LONG PLANGE AT BOTH ENDS - STAINLESS STEEL
P21	DNW0001002000R0000R0000	200					2.00		1	SUPPLY DUCT LONG SUSPENSION SYSTEM - 1/2" APPROVED - (SUPPORT NO. 200) (SINGLE COOP HANGER - GALVANNEZED STEEL)
P22	DNW0001002000R0000R0000	172					0.2844	108.148	1	SINGLE WALL SUPPLY DUCT 1/2" DIA. LONG PLANGE AT BOTH ENDS - STAINLESS STEEL
P23	DNW0001002000R0000R0000	200					2.00		1	SUPPLY DUCT LONG SUSPENSION SYSTEM - 1/2" APPROVED - (SUPPORT NO. 200) (SINGLE COOP HANGER - GALVANNEZED STEEL)
P24	DNW0001002000R0000R0000	240					2.40		1	DUCT ACCESS DOOR WITH HANDLE - FOR 1/2" DUCT USE - 1/2" DOOR - STAINLESS STEEL
P25	DNW0001002000R0000R0000	1715					13.44	875.26	1	SINGLE WALL DUCT ECCENTRIC ADAPTER - 1/2" DUCT DIA TO 24" DUCT DIA. ASSEMBLY - 430 STAINLESS STEEL
P26	DNW0001002000R0000R0000	1715					0.3905	107.812	1	SINGLE WALL SUPPLY DUCT 1/2" DIA. LONG PLANGE AT BOTH ENDS - STAINLESS STEEL
P27	DNW0001002000R0000R0000	200					2.00		1	SUPPLY DUCT LONG SUSPENSION SYSTEM - 1/2" APPROVED - (SUPPORT NO. 200) (SINGLE COOP HANGER - GALVANNEZED STEEL)
P28	DNW0001002000R0000R0000	200					2.00		1	SUPPLY DUCT LONG SUSPENSION SYSTEM - 1/2" APPROVED - (SUPPORT NO. 200) (SINGLE COOP HANGER - GALVANNEZED STEEL)
P29	DNW0001002000R0000R0000	200					2.00		1	SUPPLY DUCT LONG SUSPENSION SYSTEM - 1/2" APPROVED - (SUPPORT NO. 200) (SINGLE COOP HANGER - GALVANNEZED STEEL)
P30	DNW0001002000R0000R0000	1000					0.3905	107.340	1	SINGLE WALL SUPPLY DUCT 1/2" DIA. LONG PLANGE AT BOTH ENDS - STAINLESS STEEL
P31	DNW0001002000R0000R0000	200					2.00		1	SUPPLY DUCT LONG SUSPENSION SYSTEM - 1/2" APPROVED - (SUPPORT NO. 200) (SINGLE COOP HANGER - GALVANNEZED STEEL)
P32	DNW0001002000R0000R0000	1000					14.75	804.00	1	SINGLE WALL SUPPLY DUCT 1/2" DIA. DUCT ASSEMBLY
P33	DNW0001002000R0000R0000	800					14.77	804.00	1	SINGLE WALL DUCT ECCENTRIC ADAPTER - 1/2" DUCT DIA TO 1/2" DUCT DIA. ASSEMBLY - 430 STAINLESS STEEL
P34	DNW0001002000R0000R0000	800					4.81	806.99	1	SINGLE WALL SUPPLY DUCT 45 DEGREE ELBOW - 1/2" DUCT ASSEMBLY
P35	DNW0001002000R0000R0000	800					0.3945	108.360	1	SINGLE WALL SUPPLY DUCT 1/2" DIA. LONG PLANGE AT BOTH ENDS - STAINLESS STEEL
P36	DNW0001002000R0000R0000	300					0.3905	107.406	1	SINGLE WALL SUPPLY DUCT 1/2" DIA. LONG PLANGE AT BOTH ENDS - STAINLESS STEEL
P37	DNW0001002000R0000R0000	400					0.2855	108.358	1	SINGLE WALL SUPPLY DUCT 1/2" DIA. LONG PLANGE AT BOTH ENDS - STAINLESS STEEL
P38	DNW0001002000R0000R0000	200					2.00		1	SUPPLY DUCT LONG SUSPENSION SYSTEM - 1/2" APPROVED - (SUPPORT NO. 200) (SINGLE COOP HANGER - GALVANNEZED STEEL)
P39	DNW0001002000R0000R0000	317					0.2975	108.918	1	SINGLE WALL SUPPLY DUCT 1/2" DIA. LONG PLANGE AT BOTH ENDS - STAINLESS STEEL
P40	DNW0001002000R0000R0000	345					0.2855	108.358	1	SINGLE WALL SUPPLY DUCT 1/2" DIA. LONG PLANGE AT BOTH ENDS - STAINLESS STEEL
P41	DNW0001002000R0000R0000	200					2.00		1	SUPPLY DUCT LONG SUSPENSION SYSTEM - 1/2" APPROVED - (SUPPORT NO. 200) (SINGLE COOP HANGER - GALVANNEZED STEEL)
P42	DNW0001002000R0000R0000	172					0.2844	108.148	1	SINGLE WALL SUPPLY DUCT 1/2" DIA. LONG PLANGE AT BOTH ENDS - STAINLESS STEEL
P43	DNW0001002000R0000R0000	200					2.00		1	DUCT ACCESS DOOR WITH HANDLE - FOR 1/2" DUCT USE - 1/2" DOOR - STAINLESS STEEL
P44	DNW0001002000R0000R0000	300					14.77	306.14	1	SINGLE WALL DUCT ECCENTRIC ADAPTER - 1/2" DUCT DIA TO 1/2" DUCT DIA. ASSEMBLY - 430 STAINLESS STEEL
P45	DNW0001002000R0000R0000	300					4.81	506.14	1	SINGLE WALL SUPPLY DUCT 45 DEGREE ELBOW - 1/2" DUCT ASSEMBLY
P46	DNW0001002000R0000R0000	300					0.3975	108.918	1	SINGLE WALL SUPPLY DUCT 1/2" DIA. LONG PLANGE AT BOTH ENDS - STAINLESS STEEL
P47	DNW0001002000R0000R0000	400					0.2855	108.358	1	SINGLE WALL SUPPLY DUCT 1/2" DIA. LONG PLANGE AT BOTH ENDS - STAINLESS STEEL
P48	DNW0001002000R0000R0000	200					0.2844	108.148	1	SINGLE WALL SUPPLY DUCT 1/2" DIA. LONG PLANGE AT BOTH ENDS - STAINLESS STEEL
P49	DNW0001002000R0000R0000	70					0.2844	108.148	1	SINGLE WALL SUPPLY DUCT 1/2" DIA. LONG PLANGE AT BOTH ENDS - STAINLESS STEEL
P50	DNW0001002000R0000R0000	240					2.40		1	DUCT ACCESS DOOR WITH HANDLE - FOR 1/2" DUCT USE - 1/2" DOOR - STAINLESS STEEL
P51	DNW0001002000R0000R0000	200					2.00		1	SUPPLY DUCT LONG SUSPENSION SYSTEM - 1/2" APPROVED - (SUPPORT NO. 200) (SINGLE COOP HANGER - GALVANNEZED STEEL)
P52	DNW0001002000R0000R0000	200					2.00		1	SUPPLY DUCT LONG SUSPENSION SYSTEM - 1/2" APPROVED - (SUPPORT NO. 200) (SINGLE COOP HANGER - GALVANNEZED STEEL)
P53	DNW0001002000R0000R0000	200					2.00		1	SUPPLY DUCT LONG SUSPENSION SYSTEM - 1/2" APPROVED - (SUPPORT NO. 200) (SINGLE COOP HANGER - GALVANNEZED STEEL)
P54	DNW0001002000R0000R0000	200					2.00		1	SUPPLY DUCT LONG SUSPENSION SYSTEM - 1/2" APPROVED - (SUPPORT NO. 200) (SINGLE COOP HANGER - GALVANNEZED STEEL)
P55	DNW0001002000R0000R0000	200					2.00		1	SUPPLY DUCT LONG SUSPENSION SYSTEM - 1/2" APPROVED - (SUPPORT NO. 200) (SINGLE COOP HANGER - GALVANNEZED STEEL)
P56	DNW0001002000R0000R0000	200					2.00		1	SUPPLY DUCT LONG SUSPENSION SYSTEM - 1/2" APPROVED - (SUPPORT NO. 200) (SINGLE COOP HANGER - GALVANNEZED STEEL)
P57	DNW0001002000R0000R0000	200					2.00		1	SUPPLY DUCT LONG SUSPENSION SYSTEM - 1/2" APPROVED - (SUPPORT NO. 200) (SINGLE COOP HANGER - GALVANNEZED STEEL)
P58	DNW0001002000R0000R0000	200					2.00		1	SUPPLY DUCT LONG SUSPENSION SYSTEM - 1/2" APPROVED - (SUPPORT NO. 200) (SINGLE COOP HANGER - GALVANNEZED STEEL)
P59	DNW0001002000R0000R0000	200					2.00		1	SUPPLY DUCT LONG SUSPENSION SYSTEM - 1/2" APPROVED - (SUPPORT NO. 200) (SINGLE COOP HANGER - GALVANNEZED STEEL)
P60	DNW0001002000R0000R0000	200					2.00		1	SUPPLY DUCT LONG SUSPENSION SYSTEM - 1/2" APPROVED - (SUPPORT NO. 200) (SINGLE COOP HANGER - GALVANNEZED STEEL)
P61	DNW0001002000R0000R0000	200					2.00		1	SUPPLY DUCT LONG SUSPENSION SYSTEM - 1/2" APPROVED - (SUPPORT NO. 200) (SINGLE COOP HANGER - GALVANNEZED STEEL)
P62	DNW0001002000R0000R0000	200					2.00		1	SUPPLY DUCT LONG SUSPENSION SYSTEM - 1/2" APPROVED - (SUPPORT NO. 200) (SINGLE COOP HANGER - GALVANNEZED STEEL)
P63	DNW0001002000R0000R0000	200					2.00		1	SUPPLY DUCT LONG SUSPENSION SYSTEM - 1/2" APPROVED - (SUPPORT NO. 200) (SINGLE COOP HANGER - GALVANNEZED STEEL)
P64	DNW0001002000R0000R0000	200					2.00		1	SUPPLY DUCT LONG SUSPENSION SYSTEM - 1/2" APPROVED - (SUPPORT NO. 200) (SINGLE COOP HANGER - GALVANNEZED STEEL)
P65	DNW0001002000R0000R0000	200					2.00		1	SUPPLY DUCT LONG SUSPENSION SYSTEM - 1/2" APPROVED - (SUPPORT NO. 200) (SINGLE COOP HANGER - GALVANNEZED STEEL)
P66	DNW0001002000R0000R0000	200					2.00		1	SUPPLY DUCT LONG SUSPENSION SYSTEM - 1/2" APPROVED - (SUPPORT NO. 200) (SINGLE COOP HANGER - GALVANNEZED STEEL)
P67	DNW0001002000R0000R0000	200					2.00		1	SUPPLY DUCT LONG SUSPENSION SYSTEM - 1/2" APPROVED - (SUPPORT NO. 200) (SINGLE COOP HANGER - GALVANNEZED STEEL)
P68	DNW0001002000R0000R0000	200					2.00		1	SUPPLY DUCT LONG SUSPENSION SYSTEM - 1/2" APPROVED - (SUPPORT NO. 200) (SINGLE COOP HANGER - GALVANNEZED STEEL)
P69	DNW0001002000R0000R0000	200					2.00		1	SUPPLY DUCT LONG SUSPENSION SYSTEM - 1/2" APPROVED - (SUPPORT NO. 200) (SINGLE COOP HANGER - GALVANNEZED STEEL)
P70	DNW0001002000R0000R0000	200					2.00		1	SUPPLY DUCT LONG SUSPENSION SYSTEM - 1/2" APPROVED - (SUPPORT NO. 200) (SINGLE COOP HANGER - GALVANNEZED STEEL)
P71	DNW0001002000R0000R0000	200					2.00		1	SUPPLY DUCT LONG SUSPENSION SYSTEM - 1/2" APPROVED - (SUPPORT NO. 200) (SINGLE COOP HANGER - GALVANNEZED STEEL)
P72	DNW0001002000R0000R0000	200					2.00		1	SUPPLY DUCT LONG SUSPENSION SYSTEM - 1/2" APPROVED - (SUPPORT NO. 200) (SINGLE COOP HANGER - GALVANNEZED STEEL)
P73	DNW0001002000R0000R0000	200					2.00		1	SUPPLY DUCT LONG SUSPENSION SYSTEM - 1/2" APPROVED - (SUPPORT NO

