

SANITIZING EQUIPMENT SCHEDULE									
TAG	COUNT	DESCRIPTION	FURNISHED BY	INSTALLED BY	BASIS FOR DESIGN			REMARKS	
					MANUFACTURER	MODEL			
SB-1	2	BATHROOM AIR PURIFICATION UNIT	TUV	GC	RGF ENVIRONMENTAL GROUP	BRU ASSEMBLY		SEE ELECTRICAL SHEETS FOR CONNECTION INFORMATION.	
SH-1	2	PHAC-AB PURIFICATION UNIT	TUV	GC	RGF ENVIRONMENTAL GROUP	REME-HALD		SEE RETAIL LEADFOOT FOR INSTALLATION INFORMATION.	
SI-1	3	ICE MACHINE TREATMENT SYSTEM	TUV	GC	RGF ENVIRONMENTAL GROUP	IMS-B GA		SEE PLUMBING DRAWINGS FOR INSTALLATION INFORMATION.	

FAN SCHEDULE											
TAG	DESCRIPTION	AIRFLOW	E.S.P.	WEIGHT	ELECTRICAL			BASIS FOR DESIGN		REMARKS	
					MOTOR POWER	V/P/H	FURNISHED BY	INSTALLED BY	MANUFACTURER		MODEL
EF-1	UPBLAST DUBIRHFA EXHAUST FAN	2,550 CFM	1.45 in-wg	183 lb	2 hp	208/1/60	HS	GC	CAPTIVE-AIRE	DUBIRHFA	DIRECT DRIVE BULBROHFA UPBLAST EXHAUST FAN FURNISHED WITH WEAIRPROOF DISCONNECT AND VENTED ROOF CURB
EF-2	DOWNBLAST RESTROOM EXHAUST FAN	150 CFM	0.60 in-wg	100 lb	0.18 hp	120/1/60	HS	GC	CAPTIVE-AIRE	DR12HFA	DIRECT DRIVE DOWNBLAST RESTROOM EXHAUST FAN FURNISHED WITH INTEGRAL DISCONNECT, SPEED CONTROL, BACKDRAFT DAMPER, AND CURB

VIROGUARD SCHEDULE									
TAG	COUNT	DESCRIPTION	DUCT CONNECTION SIZE	FAN	FURNISHED BY	INSTALLED BY	BASIS FOR DESIGN		
VG-1	1	VIROGUARD HOOD EXHAUST FAN ROOF TOP CONTAINMENT SYSTEM	30" X 36"	CAPTIVE-AIRE DUBIRHFA	TDC	GC	ENVIRONMENTAL		

CONDENSING UNIT SCHEDULE															
TAG	DESCRIPTION	NOMINAL CAPACITY	NUMBER OF		REFRIGERANT		ELECTRICAL			BASIS FOR DESIGN		REMARKS			
			COMPRESSORS	CIRCUITS	TYPE	CHARGE	WEIGHT	MOCF	FLA	V/P/H	FURNISHED BY		INSTALLED BY	MANUFACTURER	MODEL
CU-1	CONDENSING UNIT - WALK-IN COOLER		1	1	R-404A	10.4 lb	250 lb	15 A	9 A	208/1/60	WCS	GC	RUSSELL ROE	RFDDK6M5SDAALN1	FURNISHED WITH WALK-IN COOLER
CU-2	REMOTE CONDENSER - LOW CAPACITY ICE MAKER		0	1	R-404A	11.46 lb	100 lb			120/1/60	KES	GC	HOSHIDAKI	URC-9F	FURNISHED WITH ICE MAKER

MAKEUP AIR UNIT SCHEDULE														
TAG	DESCRIPTION	AIRFLOW	E.S.P.	HEATING		WEIGHT	ELECTRICAL			BASIS FOR DESIGN		REMARKS		
				INPUT	OUTPUT		MOTOR POWER	V/P/H	FURNISHED BY	INSTALLED BY	MANUFACTURER		MODEL	
MAU-1	DIRECT-FIRED MAKEUP AIR UNIT	1,300 CFM	0.50 in-wg	102,095 Btu/h	93,927 Btu/h	60 °F	508 lb	1 hp	208/2/60	HS	GC	CAPTIVE-AIRE	A1-0-250-150	12.5:1 MAX TURNDOWN. FURNISHED WITH DISCONNECT, ROOF CURB, SCREEN INTAKE, AND WASHABLE ALUMINUM FILTERS

KITCHEN HOOD SCHEDULE																									
TAG	DESCRIPTION	MAX COOKING TEMP.	EXHAUST PLENUM						PERFORATED SUPPLY PLENUMS						BASIS FOR DESIGN										
			AIRFLOW	E.S.P.	DUCT COLLARS			LENGTH	WIDTH	MAU PLENUM			AC PLENUM			NO. OF LIGHT FIXTURES	WEIGHT	FURNISHED BY	INSTALLED BY	MANUFACTURER	MODEL				
					NOL	WIDTH	LENGTH			NO.	WIDTH	LENGTH	AIRFLOW	NO.	WIDTH							LENGTH			
HD-1	TYPE I CANOPY HOOD WITH PERFORATED MAU AND AC SUPPLY PLENUMS	600 °F	2,350 CFM	0.96 in-wg	1	10"	24"	13'-9"	4'-3"	54"	19"	1,300 CFM	3	6"	2'-4"	696 CFM	8	8"	8	1,029 lb	HS	GC	CAPTIVE-AIRE	5424 ND 2-ACPS-F	MATL: 18 GA. TYPE 430 SS. FURNISHED WITH QUARTER END PANELS, VAPORPROOF INCANDESCENT LIGHT FIXTURES, 10" TALL HE SS FILTERS, INTEGRAL UTILITY CABINET, ANSUL SYSTEM, DUCT COLLAR TEMPERATURE SENSOR, PREWIRE PACKAGE, SPARE FIRE SYSTEM DRY CONTACT, AND 4-POLE 20A CONTACTOR

ROOFTOP UNIT SCHEDULE																										
TAG	DESCRIPTION	NOMINAL CAPACITY	EER	AIRFLOW			NET COOLING CAPACITY				HEATING CAPACITY			NUMBER OF		REFRIGERANT			ELECTRICAL			BASIS FOR DESIGN		REMARKS		
				TOTAL	OA	E.S.P.	TOTAL	SENSIBLE	DB	WB	COND. SAT	INPUT	OUTPUT	EAT	COMPRESSORS	CIRCUITS	R-410A	WEIGHT	MOCF	FLA	V/P/H	FURNISHED BY	INSTALLED BY		MANUFACTURER	MODEL
RTU-1	WICHOR ROOFTOP UNIT	10ton	12	4,000 CFM	500 CFM	1.0 in-wg	115,000 Btu/h	91,000 Btu/h	80 °F	67 °F	80 °F	250,000 Btu/h	205,000 Btu/h	65 °F	2	2	R-410A	1,445 lb	60 A	58 A	208/2/60	CMG	GC	CARRIER	48C1N12	FURNISHED WITH COMP. ENTHALPY ECON., BAROMETRIC WEIBR, REL. SMOKE DETECTOR W/ REMOTE KEYED ANNUNCIATOR/RESET, M.O.D., MERV 8 FILTERS, CURB, RAIL GUARD, TOOLLESS HINGED ACCESS PANELS, DISCONNECT, HOT GAS REHEAT & UNIT-MOUNTED CONVENIENCE RECEPTACLE
RTU-2	DINING ROOM ROOFTOP UNIT	10ton	12	4,000 CFM	1,000 CFM	1.0 in-wg	118,000 Btu/h	91,000 Btu/h	80 °F	67 °F	80 °F	250,000 Btu/h	205,000 Btu/h	65 °F	2	2	R-410A	1,445 lb	60 A	58 A	208/2/60	CMG	GC	CARRIER	48C1N12	FURNISHED WITH COMP. ENTHALPY ECON., BAROMETRIC WEIBR, REL. SMOKE DETECTOR W/ REMOTE KEYED ANNUNCIATOR/RESET, M.O.D., MERV 8 FILTERS, CURB, RAIL GUARD, TOOLLESS HINGED ACCESS PANELS, DISCONNECT, HOT GAS REHEAT & UNIT-MOUNTED CONVENIENCE RECEPTACLE

AIR BALANCE SCHEDULE				
TAG	SUPPLY FLOW	RETURN FLOW	EXHAUST FLOW	SUBTOTAL
EF-1	0 CFM	0 CFM	3,200 CFM	2,550 CFM
EF-2	0 CFM	0 CFM	350 CFM	150 CFM
MAU-1	1,950 CFM	0 CFM	0 CFM	1,300 CFM
RTU-1	4,000 CFM	3,500 CFM	0 CFM	500 CFM
RTU-2	4,000 CFM	3,000 CFM	0 CFM	1,000 CFM
NET PRESSURIZATION				100 CFM

CONTROL FUNCTIONS

A. THE MAIN COOKING EXHAUST FAN AND MAKE-UP AIR UNIT SHALL BE INTERLOCKED TO OPERATE TOGETHER. THIS CONTROL CIRCUIT IS ACTIVATED BY A SWITCH AND INCLUDES A FIRE PROTECTION OVERRIDE.

B. THE TEMPERATURE IN EACH ZONE IS CONTROLLED BY SPACE TEMPERATURE SENSORS CONNECTED TO THE THERMOSTATS LOCATED IN THE OFFICE. ALL ZONES SHALL OPERATE WITH CONTINUOUS FAN OPERATION DURING OCCUPIED TIMES AND INTERMITTENTLY AS NEEDED TO MAINTAIN SET-POINTS DURING UNOCCUPIED TIMES. OUTSIDE AIR DAMPERS SHALL BE OPEN CONTINUOUSLY WHEN EITHER IN OCCUPIED MODE OR WHEN THE HOOD SYSTEM IS ON AND SHALL BE CLOSED DURING UNOCCUPIED PERIODS.

C. THE THERMOSTATS SHALL DETERMINE OCCUPIED/UNOCCUPIED STATUS BASED ON THE SCHEDULE IN THE ENERGY MANAGEMENT SYSTEM.

ELECTRIC UNIT HEATER SCHEDULE									
TAG	DESCRIPTION	MOUNTING	ELECTRICAL POWER	V/P/H	FURNISHED BY	INSTALLED BY	BASIS FOR DESIGN		
UH-1	CEILING-MOUNTED UNIT HEATER	CEILING	3 KW	208/1/60	GC	GC	INTECO		93110000V

AIR TERMINAL SCHEDULE										
TAG	DESCRIPTION	FACE SIZE	MATERIAL	FINISH	MOUNTING	FURNISHED BY	INSTALLED BY	BASIS FOR DESIGN		NOTES
								MANUFACTURER	MODEL	
CD1	PERFORATED CEILING DIFFUSER	24" X 24"	ALUMINUM	WHITE	LAY-IN CEILING	GC	GC	NAILOR	4320A TYPE L	PROVIDE WITH INTEGRAL OBD
CD2	PERFORATED CEILING DIFFUSER	24" X 12"	ALUMINUM	WHITE	LAY-IN CEILING	GC	GC	NAILOR	4320A TYPE L	PROVIDE WITH INTEGRAL OBD. REMOVE 4-WAY DEFLECTORS
CD3	PERFORATED CEILING DIFFUSER	12" X 12"	ALUMINUM	WHITE	SURFACE MOUNT	GC	GC	NAILOR	4320A TYPE S	PROVIDE WITH INTEGRAL OBD
ER1	PERFORATED CEILING EXHAUST	12" X 12"	ALUMINUM	WHITE	SURFACE MOUNT	GC	GC	NAILOR	4330R TYPE S	PROVIDE INTEGRAL OBD
RG1	PERFORATED CEILING RETURN	48" X 24"	ALUMINUM	WHITE	LAY-IN CEILING	GC	GC	NAILOR	4330R TYPE L	
RG3	PERFORATED CEILING RETURN	48" X 24"	ALUMINUM	WHITE	SURFACE MOUNT	GC	GC	NAILOR	4330R TYPE S	
SR1	ADJUSTABLE TURBO NOZZLE	SEE NECK SIZE	ALUMINUM	BLACK	WALL	GC	GC	AIR CONCEPTS	M-AD-SR1	PROVIDE WITH CONCEALED MOUNTING AND FACE-ACCESSIBLE OBD
SR2	DUCT-MOUNTED WALL GRILL	20" X 8"	ALUMINUM	BLACK	WALL	GC	GC	AIR CONCEPTS	RGDD-F	PROVIDE WITH CONCEALED MOUNTING AND FACE-ACCESSIBLE OBD

10/17/2024

COPYRIGHT 2024
THIS DOCUMENT IS AN INSTRUMENT OF SERVICE
AND AS SUCH REMAINS THE PROPERTY OF
CHITROLE MORGAN GRILL, INC. PERMISSION FOR
USE OF THIS DOCUMENT IS LIMITED AND CAN BE
EXTENDED ONLY BY WRITTEN AGREEMENT WITH
CHITROLE MORGAN GRILL, INC.

CHITROLE MORGAN GRILL, INC.
PO BOX 181566
COLUMBIA, SC 29218-2566
TELEPHONE: 812.332.2400
INTERNET: WWW.CHITROLE.COM

STORE NO.: 5494
EAST AURORA
168 MAIN STREET
EAST AURORA, NY 14052

Issue/Revised:
08/26/2024 FOR PERMIT

Revisions:

Drawn: Checked:
IAF JV

Project No.

CMG 5494

Contract:

MECHANICAL
SCHEDULES

M600

System Checksums

By Case

System - 001

Single Zone

COOLING COIL PEAK				CLG SPACE PEAK				HEATING COIL PEAK				TEMPERATURES		
Peaked at Time:		Mo/Hr: 8 / 16		Mo/Hr: Sum of		Mo/Hr: Heating Design		Mo/Hr: Heating Design						
Outside Air:		OADD/WB/IR: 07 / 73 / 100		OADD: Peaks		OADD: 0		OADD: 0						
Space Sens. + Lat.	Plenum Sens. + Lat	Net Total	Percent Of Total	Space Sensible	Percent Of Total	Space Peak	Coil Peak	Percent	Space Sens	Tot Sens	Of Total	Cooling	Heating	
Dtu/h	Dtu/h	Dtu/h	(%)	Dtu/h	(%)	Dtu/h	Dtu/h	(%)	Dtu/h	Dtu/h	(%)			
Envelope Loads														
Skylite Solar	0	0	0	0	0	0	0	0.00	0	0	0.00	SADB	55.0	76.7
Skylite Cond	0	0	0	0	0	0	0	0.00	0	0	0.00	Ra Plenum	75.0	70.0
Roof Cond	4,062	0	4,062	2	2,921	2	-8,121	7.86	-8,121	-8,121	27.59	Return	75.1	70.0
Glass Solar	55,244	0	55,244	29	62,372	44	0	0.00	0	0	0.00	Ret/OA	76.5	62.3
Glass/Door Cond	5,432	0	5,432	3	3,439	2	-28,519	27.59	-28,519	-28,519	86.59	Fn MtrTD	0.1	0.0
Wall Cond	5,327	0	5,327	3	4,745	3	-11,511	11.14	-11,511	-11,511	36.14	Fn BldTD	0.1	0.0
Partition/Door	0	0	0	0	0	0	0	0.00	0	0	0.00	Fn Frict	0.3	0.0
Floor	0	0	0	0	0	0	0	0.00	0	0	0.00			
Adjacent Floor	0.00	0.00	0.00	0.00	0.00	0.00	0.00	0.00	0.00	0.00	0.00			
Infiltration	0	0	0	0	0	0	0	0.00	0	0	0.00			
Sub Total ==>	70,065	0	70,065	37	73,476	51	-48,151	46.59	-48,151	-48,151	144.73			
Internal Loads														
Lights	3,638	910	4,548	2	3,638	3	0	0.00	0	0	0.00	Diffuser	6,615	6,615
People	23,100	0	23,100	12	11,550	8	0	0.00	0	0	0.00	Terminal	6,615	6,615
Misc	54,574	0	54,574	29	54,574	38	0	0.00	0	0	0.00	Main Fan	6,615	6,615
Sub Total ==>	81,312	910	82,222	44	69,762	49	0	0.00	0	0	0.00	Sec Fan	0	0
Grand Total ==>	151,378	800	188,872	100.00	143,240	100.00	-48,151	-103,354	100.00	-48,151	-103,354			

COOLING COIL SELECTION							
	Total Capacity	Sens Cap.	Coil Airflow	Enter DB/WB/HR		Leave DB/WB/HR	
	ton	MBh	cfm	°F	°F	gr/lb	°F
Main Clg	15.7	188.9	154.0	66.15	76.5	62.6	65.0
Aux Clg	0.0	0.0	0.0	0.0	0.0	0.0	0.0
Opt Vent	0.0	0.0	0.0	0.0	0.0	0.0	0.0
Total	15.7	188.9					

AREAS			
	Gross Total	Glass	
	ft²	(%)	
Floor	2,665		
Part	0		
Int Door	1		
ExFlr	0		
Roof	2,665	0	0
Wall	3,009	890	30
Ext Door	21	0	0

HEATING COIL SELECTION				
	Capacity	Coil Airflow	Ent	Lvg
	MBh	cfm	°F	°F
Main Htg	-103.4	6,615	62.3	76.7
Aux Htg	0.0	0	0.0	0.0
Preheat	0.0	0	0.0	0.0
Humidif	0.0	0	0.0	0.0
Opt Vent	0.0	0	0.0	0.0
Total	-103.4			

Project Name: Rouge
Dataset Name: CHIP-EANY.TRC

TRACE® 700 v6.3.5 calculated at 07:13 AM on 10/10/2024
Alternative - 1 System Checksums Report Page 1 of 1



CHIPOTLE MEXICAN GRILL, INC.
168 MAIN STREET
EAST AURORA, NY 14052



CHIPOTLE MEXICAN GRILL, INC.
PO BOX 182366
COLUMBIA, OH 43218-2366
TELEPHONE: 614.392.2400
INTERNET: WWW.CHIPOTLE.COM

STORE NO.: 5494
EAST AURORA
168 MAIN STREET
EAST AURORA, NY 14052

Issue Record:
08/26/2024 FOR PERMIT

Revisions:
2 10/17/2024 CITY COMMENTS

Drawn: _____
Author: _____
Checked: _____
Checker: _____

Project No:
CMG 5494

GROUP:
MECHANICAL CALCULATIONS



M601

PLUMBING SPECIFICATIONS

SECTION 1505--COMMON PIPING REQUIREMENTS

- PART 1 - GENERAL**
- 1.1 SECTION REQUIREMENTS**
- A. COMPLY WITH THE REQUIREMENTS OF THE BUILDING CODE AND THE LOCAL AUTHORITY HAVING JURISDICTION.
- PART 2 - PRODUCTS**
- 1. HANGERS AND PIPE ATTACHMENTS:** FACTORY FABRICATED WITH GALVANIZED COATINGS; NONMETALLIC COATED FOR HANGERS IN DIRECT CONTACT WITH COPPER TUBING COMPONENTS AND MATERIALS.
- 2. BUILDING ATTACHMENTS:** POWERED ACTUATED TYPE, DRIVE PIN ATTACHMENTS WITH FULLOUT AND SHEAR CAPACITIES APPROPRIATE FOR SUPPORTED LOADS AND BUILDING MATERIALS; UL LISTING AND FM APPROVAL FOR FIRE PROTECTION SYSTEMS.
- 3. MECHANICAL ANCHOR FASTENERS:** INSERT-TYPE ATTACHMENTS WITH FULLOUT AND SHEAR CAPACITIES APPROPRIATE FOR SUPPORTED LOADS AND BUILDING MATERIALS; UL LISTING AND FM APPROVAL FOR FIRE PROTECTION SYSTEMS.
- PART 3 - EXECUTION**
- 3.1 INSTALLATION**
- A. INSTALL PIPING FREE OF SAGS AND BENDS.
- B. INSTALL FITTINGS FOR CHANGES IN DIRECTION AND BRANCH CONNECTIONS.
- C. INSTALL SLEEVES FOR PIPES PASSING THROUGH CONCRETE AND MASONRY WALLS, GYPSUM BOARD PARTITIONS, AND CONCRETE FLOOR AND ROOF SLABS.
- D. EXTERIOR WALL, PIPE PENETRATIONS: MECHANICAL SLEEVE SEALS INSTALLED IN STEEL OR CAST IRON PIPES FOR WALL SLEEVES.
- E. FIRE BARRIER PENETRATIONS: SEAL PIPE PENETRATIONS WITH THROUGH-PENETRATION FIRESTOP SYSTEMS.
- F. INSTALL UNIONS ADJACENT TO EACH VALVE AND AT FINAL CONNECTION TO EACH PIECE OF EQUIPMENT.
- G. INSTALL DIELECTRIC UNIONS AND FLANGES TO CONNECT PIPING MATERIALS OF DISSIMILAR METALS IN GAS PIPING.
- H. INSTALL DIELECTRIC COUPLINGS AND NIPPLE FITTINGS TO CONNECT PIPING MATERIALS OF DISSIMILAR METALS IN WATER PIPING.
- I. PROVIDE FULL-BRING ESCUTCHEONS AT PLUMBING PENETRATIONS THROUGH WALLS OR CEILINGS, TIGHTLY SEAL ESCUTCHEONS TO THE ADJACENT SURFACE.
- 3.2 HANGERS AND SUPPORTS**
- A. INSTALL BUILDING ATTACHMENTS WITH CONCRETE OR STRUCTURAL STEEL. INSTALL ADDITIONAL ATTACHMENTS AT CONCENTRATED LOADS, INCLUDING VALVES, FLANGES, GUNDS, STRAINERS, EXPANSION JOINTS, AND AT CHANGES IN DIRECTION OR PIPING.
- B. INSTALL FIBROUS ACTUATED DRIVE PIN FASTENERS IN CONCRETE AFTER CONCRETE IS CURED. DO NOT USE IN LIGHTWEIGHT CONCRETE OR IN SLABS LESS THAN 4 INCHES THICK.
- C. INSTALL MECHANICAL ANCHOR FASTENERS IN CONCRETE AFTER CONCRETE IS CURED. DO NOT USE IN LIGHTWEIGHT CONCRETE OR IN SLABS LESS THAN 4 INCHES THICK.
- D. SUPPORT FIRE PROTECTION SYSTEM PIPING INDEPENDENT OF OTHER PIPING.
- E. LOAD DISTRIBUTION: INSTALL HANGERS AND SUPPORTS SO PIPING LIVE AND DEAD LOADINGS AND STRESSES FROM MOVEMENT WILL NOT BE TRANSMITTED TO CONNECTED EQUIPMENT.
- END OF SECTION 1505**

SECTION 1509--MECHANICAL INSULATION

- PART 1 - GENERAL**
- 1.1 SECTION REQUIREMENTS**
- A. SUBMITTALS: NONE.
- B. QUALITY ASSURANCE: LABELED WITH MAXIMUM FLAME SPREAD RATING OF 25 AND MAXIMUM SMOKE DEVELOPED RATING OF 50 ACCORDING TO ASTM E 84.
- PART 2 - PRODUCTS**
- 2.1 PIPE INSULATION**
- A. PREFORMED GLASS FIBER PIPE INSULATION: ASTM C 547, CLASS 1, WITH FACTORY APPLIED, ALL PURPOSE, VAPOR RETARDER JACKET
- B. POLYOLEFIN PIPE INSULATION: UNCELLULAR POLYETHYLENE, PREFORMED PIPE INSULATION, COMPLY WITH ASTM C 534, TYPE 1, EXCEPT FOR DENSITY.
- PART 3 - EXECUTION**
- 3.1 INSTALLATION**
- A. INSTALL VAPOR BARRIERS ON INSULATED PIPES WITH SURFACE OPERATING TEMPERATURES BELOW 60 DEG F.
- B. INSULATE FITTINGS, VALVES, AND SPECIALTIES.
- C. SEAL VAPOR BARRIER PENETRATIONS FOR HANGERS, SUPPORTS, ANCHORS, AND OTHER PROJECTIONS.
- D. COAT GLASS FIBER PIPE INSULATION ENDS WITH VAPOR BARRIER COATING.
- E. ROOF PENETRATIONS: APPLY INSULATION FOR INTERIOR APPLICATIONS TO A POINT EVEN WITH THE TOP OF THE ROOF FLASHING.
- F. EXTERIOR WALL PENETRATIONS: FOR PENETRATIONS OF BELOW GRADE EXTERIOR WALLS, TERMINATE INSULATION FLUSH WITH MECHANICAL SLEEVE SEAL.
- G. INTERIOR WALLS AND PARTITIONS PENETRATIONS: TERMINATE INSULATION AT PENETRATIONS THROUGH FIRE RATED WALLS AND PARTITIONS. SEAL AROUND PENETRATION WITH THROUGH PENETRATION FIRESTOP SYSTEMS.
- H. FIRE RATED WALLS AND PARTITIONS PENETRATIONS: TERMINATE INSULATION AT PENETRATIONS THROUGH FIRE RATED WALLS AND PARTITIONS. SEAL AROUND PENETRATION WITH THROUGH PENETRATION FIRESTOP SYSTEMS.
- I. FLOOR PENETRATIONS: TERMINATE INSULATION AT THE UNDERSIDE OF THE FLOOR ASSEMBLY AND AT THE FLOOR SUPPORT AT TOP OF FLOOR. SEAL AROUND PENETRATION WITH THROUGH PENETRATION FIRESTOP SYSTEMS.
- J. GLASS FIBER INSULATION INSTALLATION: BOND INSULATION TO PIPE WITH ADHESIVE. SEAL SEAMS AND JOINTS WITH VAPOR BARRIER COMPOUND.
- K. INTERIOR PIPING SYSTEM APPLICATIONS: INSULATE THE FOLLOWING PIPING SYSTEMS:
- DOMESTIC COLD, HOT, AND RECIRCULATION WATER PIPES
 - EXPOSED SANITARY DRAINS AND WATER SUPPLY PIPES FOR PUBLIC HAND SINKS
 - REFRIGERANT PIPING
 - DO NOT APPLY INSULATION TO THE FOLLOWING SYSTEMS, MATERIALS, AND EQUIPMENT
- FLEXIBALL CONNECTORS
 - FIRE PROTECTION PIPING SYSTEMS
 - SANITARY BRASSING AND VENT PIPING
 - CROWN FLATED PIPES AND FITTINGS, EXCEPT FOR PLUMBING FIXTURES FOR THE DISABLED.
 - PIPING SPECIALTIES, INCLUDING AIR CHAMBERS, UNIONS, STRAINERS, CHECK VALVES, FLOW VALVES, AND FLOW REGULATORS.
- M. PIPE INSULATION THICKNESS APPLICATION SCHEDULE: INSULATE PIPING WITH THE FOLLOWING MATERIALS AND THICKNESSES:
- DOMESTIC HOT AND RECIRCULATION WATER PIPES: 1-INCH PREFORMED GLASS FIBER PIPE INSULATION.
 - DOMESTIC COLD WATER: 1-1/2 INCH PREFORMED GLASS FIBER PIPE INSULATION.
 - P-TRAP AND EXPOSURE SUPPLIES FOR PUBLIC HAND SINKS: ADA-COMPLIANT PREFORMED INSULATION.
- END OF SECTION 1509**

SECTION 1510--VALVES

- PART 1 - GENERAL (NOT APPLICABLE)**
- PART 2 - PRODUCTS**
- 2.1 GENERAL DUTY VALVES**
- A. 4-INCH CONNECTIONS: THREADS SHALL COMPLY WITH ANSI B1.20.1. FLANGES SHALL COMPLY WITH ANSI B16.1 FOR CAST IRON VALVES AND ANSI B16.24 FOR BRONZE VALVES. SOLDER-JOINT CONNECTIONS SHALL COMPLY WITH ANSI B16.18.
- B. BALL VALVES: RATED FOR 150 PSIG SATURATED STEAM PRESSURE, 400 PSIG WOG PRESSURE; 2-PIECE CONSTRUCTION; WITH BRONZE BODY; STANDARD BALL; NON-REFILLABLE; "TEE-LONG" OR "TEE" SEATS AND SEALS; BLOWOUT PROOF STEEL; AND VINYL COVERED STEEL HANDLE.
- C. PLUG VALVES: RATED AT 150 PSIG WOG; BRONZE BODY; WITH STRIGHTAWAY PATTERN, SQUARE HEAD, AND THREADED ENDS.
- D. SWING CHECK VALVES: CLASS 125; CAST BRONZE BODY AND GATE; WITH HORIZONTAL SWING, Y PATTERN, AND BRONZE DISC.
- E. VALVES FOR COPPER TUBE: SOLDER ENDS, EXCEPT PROVIDE THREADED ENDS FOR HEATING HOT WATER AND LOW PRESSURE STEAM SERVICES.
- F. VALVES FOR STEEL PIPE: THREADED ENDS.
- PART 3 - EXECUTION**
- 3.1 INSTALLATION**
- A. USE GATE AND BALL VALVES FOR SHUTOFF DUTY AND BALL FOR THROTTLING DUTY.
- B. LOCATE VALVES FOR EASY ACCESS AND PROVIDE SEPARATE SUPPORT WHERE NECESSARY.
- C. INSTALL ACCESSIBLE VALVES FOR EACH EQUIPMENT.
- D. INSTALL VALVES IN HORIZONTAL PIPING WITH STEM AT OR ABOVE CENTER OF PIPE.
- E. INSTALL VALVES IN A POSITION TO ALLOW FULL STEM MOVEMENT.
- F. INSTALL CHECK VALVES FOR PROPER DIRECTION OF FLOW IN HORIZONTAL POSITION WITH HINZE PIN LEVEL.
- END OF SECTION 1510**

SECTION 15140--DOMESTIC WATER PIPING

- PART 1 - GENERAL**
- 1.1 SECTION REQUIREMENTS**
- A. PERFORMANCE REQUIREMENTS: UNLESS OTHERWISE INDICATED MINIMUM PRESSURE REQUIREMENTS FOR WATER PIPING ARE AS FOLLOWS:
- SERVICE ENTRANCE PIPING: 100 PSIG
 - DOMESTIC WATER PIPING: 80 PSIG
- B. COMPLY WITH NST 34 "PLASTIC PIPING COMPONENTS AND MATERIALS."
- C. COMPLY WITH NST 61 "DRINKING WATER SYSTEM COMPONENTS: HEALTH EFFECTS."
- PART 2 - PRODUCTS**
- 2.1 PIPES AND TUBES (SEE MATERIAL SCHEDULE ON SHEET P100 FOR WHERE THESE MATERIALS ARE TO BE USED)**
- HARD COPPER TUBE: ASTM B 18, TYPES 1, WATER TUBE, DRAWN TEMPER.
 - PVC PLASTIC, WATER PIPE: ASTM D 1785, SCHEDULE 40, PLAIN ENDS.
- 2.2 FITTINGS**
- WROUGHT COPPER, SOLDER JOINT PRESSURE FITTINGS: ASME B 36.22.
 - CAST COPPER ALLOY, SOLDER JOINT PRESSURE FITTINGS: ASME B 16.18.
 - BRONZE FLANGES: ANSI B 16.24, CLASSES 150 AND 300.
 - COPPER UNIONS: ASME B 16.18, CAST COPPER ALLOY BALL, HEXAGONAL STOCK, WITH BALL AND SOCKET JOINT, METAL TO METAL SEATING SURFACES, AND SOLDER JOINT, THREADED, OR SOLDER JOINT AND THREADED ENDS, THREADED COMPILING WITH ASME B 1.20.1.
 - PVC PLASTIC, SCHEDULE 40, SOCKET TYPE PIPE FITTINGS: ASTM D 2467.
- 2.3 JOINTING MATERIALS**
- A. SOLDER FILLER METAL: ASTM B 9.22, LEAD FREE.
- B. BRAZING FILLER METALS: ANS B 8, ALLOYS TO SUIT SYSTEM REQUIREMENTS.
- C. SOLDER GRENDS: AS RECOMMENDED BY MANUFACTURER.
- D. PLASTIC PIPE SEALS: ASTM F 477, ELASTOMER GASKET
- PART 3 - EXECUTION**
- 3.1 VALVE APPLICATIONS**
- A. INSTALL GATE VALVES CLOSE TO MAIN ON EACH BRANCH AND RISER SERVING TWO OR MORE PLUMBING FIXTURES OR EQUIPMENT CONNECTIONS AND WHERE INDICATED.
- B. INSTALL GATE OR BALL VALVES ON INLET TO EACH PLUMBING EQUIPMENT ITEM, ON EACH SUPPLY TO EACH PLUMBING FIXTURE, NOT HAVING STOPS ON SUPPLIES, AND ELSEWHERE AS INDICATED.
- C. INSTALL DRAIN VALVE AT BASE OF EACH RISER, AT LOW POINTS OF HORIZONTAL RUNS, AND WHERE REQUIRED TO DRAIN INLET DISTRIBUTION PIPING SYSTEMS.
- D. INSTALL SWING CHECK VALVE ON DISCHARGE SIDE OF EACH PUMP AND ELSEWHERE AS INDICATED.
- E. INSTALL BALL VALVES IN EACH HOT WATER CIRCULATING LOOP AND DISCHARGE SIDE OF EACH PUMP.
- 3.2 PIPING INSTALLATION**
- A. INSTALL HANGERS AND SUPPORTS AT INTERVALS INDICATED IN THE APPLICABLE PLUMBING CODE AND AS RECOMMENDED BY PIPE MANUFACTURER.
- B. SUPPORT VERTICAL PIPING AT EACH FLOOR.
- 3.3 INSPECTING AND CLEANING**
- A. INSPECT AND TEST PIPING SYSTEMS FOLLOWING PROCEDURES OF AUTHORITIES HAVING JURISDICTION.
- B. CLEAR AND TEST WATER DISTRIBUTION PIPING FOLLOWING PROCEDURES OF AUTHORITIES HAVING JURISDICTION.
- END OF SECTION 15140**

SECTION 15150--SANITARY WASTE AND VENT PIPING

- PART 1 - GENERAL**
- 1.1 SECTION REQUIREMENTS**
- A. MINIMUM PRESSURE REQUIREMENT FOR SOIL, WASTE AND VENT 10 FEET HEAD.
- B. COMPLY WITH NST 34 "PLASTIC PIPING COMPONENTS AND RELATED MATERIALS."
- PART 2 - PRODUCTS**
- 2.1 PIPES AND TUBES**
- A. PVC PLASTIC, DWV PIPE: ASTM D 2665, SCHEDULE 40, PLAIN ENDS.
- 2.2 FITTINGS**
- A. PVC PLASTIC, DWV PIPE FITTINGS: ASTM D 2665, MADE TO ASTM D 3311; SOCKET TYPE; DRAIN, WASTE, AND VENT PIPE PATTERNS.
- PART 3 - EXECUTION**
- 3.1 PIPING INSTALLATION**
- A. INSTALL CLEANOUT AND EXTENSION TO GRADE AT CONNECTION OF BUILDING SANITARY DRAIN AND BUILDING SANITARY SEWER.
- B. LOCATE DRAINAGE PIPING RUNOUTS AS CLOSE AS POSSIBLE TO BOTTOM OF FLOOR SLAB SUPPORTING FIXTURES OR DRAINS.
- 3.2 INSPECTION**
- A. INSPECT AND TEST PIPING SYSTEMS FOLLOWING PROCEDURES OF AUTHORITIES HAVING JURISDICTION.
- END OF SECTION 15150**

SECTION 15198--NATURAL GAS PIPING

- PART 1 - GENERAL**
- 1.1 SECTION REQUIREMENTS**
- A. QUALITY ASSURANCE: COMPLY WITH NFPA 54 AND THE PLUMBING CODE.
- PART 2 - PRODUCTS**
- 2.1 PIPE, TUBE, AND SPECIALTIES**
- A. STEEL PIPE: ASTM A 53, TYPE S (SEAMLESS), GRADE B, SCHEDULE 40, PLAIN ENDS.
- B. MALLEABLE IRON THREADED FITTINGS: ASME B16.3, CLASS 150.
- C. MANUAL VALVES: COMPLY WITH STANDARDS LISTED OR, IF APPROPRIATE, TO ANSI Z21.15.
- D. GAS STOPS: AGA CERTIFIED, BRONZE BODY, PLUG TYPE WITH BRONZE PLUG, FOR2 PSIG OR LESS NATURAL GAS, INCLUDE AGA STAMP, FLAT OR SQUARE HEAD OR LEVER HANDLE, AND THREADED ENDS COMPLYING WITH ASME B1.20.1.
- E. GAS VALVES: 150 PSIG WOG; CAST IRON OR BRONZE BODY; BRONZE PLUG; STRAIGHTAWAY PATTERN; SQUARE HEAD, TAPERED PLUG TYPE.
- F. GAS PRESSURE REGULATORS: INSTANT RELIEF, SHOCK RESISTANT, CORROSION RESISTANT PRESSURE REGULATORS, INCLUDE ATMOSPHERIC VENT, ELUTION COMPENSATOR, REGULATOR PRESSURE RATINGS, INLET AND OUTLET PRESSURES, AND FLOW VOLUME IN CUBIC FEET PER HOUR OF NATURAL GAS AT SPECIFIC GRAVITY AIR AS INDICATED.
- G. FLEXIBLE CONNECTORS: ANSI Z21.24, COPPER ALLOY.
- H. STRAINERS: BRONZE BODY, Y-PATTERN, FULL SIZE OF CONNECTING PIPE; INCLUDE STAINLESS-STEEL SCREENS WITH 3/64 INCH PERFORATIONS AND A PRESSURE RATING OF 125-PSIG-MINIMUM, WOG-WORKING PRESSURE.
- PART 3 - EXECUTION**
- 3.1 INSTALLATION**
- A. CLOSE EQUIPMENT SHUTOFF VALVES BEFORE TURNING OFF GAS TO PREMISES OR SECTION OF PIPING. PERFORM LEAKAGE TEST AS SPECIFIED TO DETERMINE THAT ALL EQUIPMENT IS TURNED OFF IN AFFECTED PIPING SECTION.
- B. INSTALL SHUTOFF VALVE, DOWNSTREAM FROM GAS METER, OUTSIDE BUILDING AT GAS SERVICE ENTRANCE.
- C. INSTALL GAS STOPS FOR SHUTOFF TO APPLIANCES WITH NPS 2" OR SMALLER LOW PRESSURE GAS SUPPLY.
- D. DRIPS AND SEDIMENT TRAPS: INSTALL DROPS AT POINTS WHERE CONDENSATE MAY COLLECT. INCLUDE OUTLETS OF GAS METERS, LOCATE WHERE READILY ACCESSIBLE TO PERMIT CLEANING AND EMPTYING. DO NOT INSTALL WHERE CONDENSATE WOULD BE SUBJECT TO FREEZING.
- E. INSTALL GAS PIPING AT UNIFORM SLOPE OF 0.1 PERCENT UPWARD TOWARD RISERS.
- F. CONNECT BRONZE PIPING FROM TOP OR SIDE OF HORIZONTAL PIPING.
- G. INSTALL STRAINERS ON SUPPLY SIDE OF EACH CONTROL VALVE, GAS PRESSURE REGULATOR, SOLENOID VALVE, AND ELSEWHERE AS INDICATED.
- H. INSTALL VALVES IN UNEXPOSED LOCATIONS, PROTECTED FROM DAMAGE.
- I. INSTALL GAS VALVES UPSTREAM FROM EACH GAS PRESSURE REGULATOR, WHERE TWO GAS-PRESSURE REGULATORS ARE INSTALLED IN SERIES, VALVE IS NOT REQUIRED AT SECOND REGULATOR.
- J. CONNECT GAS PIPING TO PROJECT SITE INCLUDING THE ACTUAL UNLOADING, UNPACKING, ASSEMBLY, ERECTING, PLACING, ANCHORING, APPLYING, WORKING TO DIMENSION, FINISHING, CURING, PROTECTING, CLEANING, AND SIMILAR OPERATIONS. THE TERM "INSTALL" DESCRIBES THE ENTIRE PROJECT SITE INCLUDING THE ACTUAL UNLOADING, UNPACKING, ASSEMBLY, ERECTING, PLACING, ANCHORING, APPLYING, WORKING TO DIMENSION, FINISHING, CURING, PROTECTING, CLEANING, AND SIMILAR OPERATIONS. THE TERM "PROVIDE" MEANS TO FURNISH AND INSTALL. COMPLETE AND READY FOR THE INTERIOR USE.
- K. PRIOR TO CONNECTION TO ANY EXISTING GAS SYSTEM PERFORM A GAS TEST TO VERIFY THE TYPE OF SYSTEM AND THE DIRECTION OF FLOW. REPORT ANY DEVIATION FROM THE CONSTRUCTION DOCUMENTS TO THE TENANT'S CONSTRUCTION MANAGER.
- L. PROVIDE SANITARY AND GREASE WASTE PIPES AT A MINIMUM SLOPE OF 1/4" PER FOOT UNLESS NOTED OTHERWISE.
- M. PERFORM A FLOW TEST ON THE DOMESTIC WATER SERVICE AT POSSESSION, IF THE STATIC WATER PRESSURE IS OVER 80 PSI, THEN COORDINATE WITH CHROME CONTRACTOR MANAGER TO PROVIDE A PRESSURE REGULATOR (WITH F-USB-ZS OR EQUIV.), PROVIDE RESULTS OF THE FLOW TEST TO THE ENGINEER FOR CORRECTION OF ADEQUATE CAPACITY.
- END OF SECTION 15198**

SECTION 15410--PLUMBING FIXTURES

- PART 1 - GENERAL**
- 1.1 SECTION REQUIREMENTS**
- A. SUBMITTALS: NONE.
- B. COMPLY WITH REQUIREMENTS OF PUBLIC LAW 102-486, "ENERGY POLICY ACT," REGARDING WATER FLOW RATE AND WATER CONSUMPTION OF PLUMBING FIXTURES.
- C. COMPLY WITH APPLICABLE STANDARDS BELOW:
- BRANDNAME, CAST IRON FIXTURES: ASME A112.19.1M.
 - NATIONAL SANITATION FOUNDATION CONSTRUCTION: NSF2.
 - PORCELAIN ENAMELED FIXTURES: ASME A112.19.4M.
 - SUP-RESISTANT BATHING SURFACES: ASTM F 1042-02.
 - STAINLESS STEEL FIXTURES: ASME A112.19.3M.
 - VITREOUS CHINA FIXTURES: ASME A112.19.2M.
- PART 2 - PRODUCTS**
- 2.1 REFER TO THE FIXTURE SCHEDULE ON DRAWING P100**
- PART 3 - EXECUTION**
- 3.1 INSTALLATION**
- A. INSTALL FIXTURES WITH FLANGES AND GASKET SEALS.
- B. INSTALL FLOWMETER VALVES FOR ACCESSIBLE WATER CLOSETS AND URINALS WITH HANDLE MOUNTED ON WIDE SIDE OF COMPARTMENT. INSTALL OTHER ACTIVATORS IN LOCATIONS THAT ARE EASY FOR THE DISABLED TO REACH.
- C. FASTEN WALL HANGING PLUMBING ARTICLES SECURELY TO SUPPORTS ATTACHED TO BUILDING SUBSTRATE. WHEN SUPPORTS ARE SPECIFIED, AND TO BUILDING WALL CONSTRUCTION WHERE NO SUPPORT IS INDICATED.
- D. FASTEN FLOOR MOUNTED FIXTURES TO SUBSTRATE, WITH FIXTURES HAVING HOLES FOR SECURING FIXTURE TO WALL CONSTRUCTION, FASTEN TO REINFORCEMENT BUILT INTO WALLS.
- E. FASTEN WALL MOUNTED FITTINGS TO REINFORCEMENT BUILT INTO WALLS.
- F. FASTEN COUNTER INDICATED PLUMBING FIXTURES TO COUNTERTOP.
- G. SECURE SUPPLIES TO SUPPORTS ON SUBSTRATE WITHIN PIPE SPACE BEHIND FIXTURE, HIDE SET MOBS BASINS IN LEVELING BED OF CLEANER GROUT.
- H. INSTALL INDIVIDUAL SUPPLY INLETS, SUPPLY STOPS, SUPPLY RISERS, AND TUBULAR BRASS TRAPS WITH CLEANOUTS AT FIXTURES.
- I. INSTALL WATER SUPPLY STOP VALVES IN ACCESSIBLE LOCATIONS.
- J. INSTALL DRAIN TRAPS ON FIXTURE OUTLETS, DRAIN TRAPS ON TUBES HAVING INTERNAL TRAPS, GROUT TRAPS ON INDIRECT WASTES, UNLESS OTHERWISE INDICATED OR REQUIRED BY THE AUTHORITY HAVING JURISDICTION.
- K. INSTALL FILLING ESCUTCHEONS AT WALL, FLOOR, AND CEILING PENETRATIONS IN EXPOSED, FINISHED LOCATIONS AND WITHIN CABINETS AND MILLWORK. USE DEEP PATTERN ESCUTCHEONS WHERE REQUIRED TO CONCEAL PROTRUDING PIPES.
- L. INSTALL PIPING CONNECTIONS BETWEEN PLUMBING FIXTURES AND PIPING SYSTEMS AND PLUMBING EQUIPMENT. INSULATE INSULATION ON SUPPLIES AND DRAINS OF FIXTURES FOR THE DISABLED.
- M. GROUND EQUIPMENT: TIGHTEN ELECTRICAL CONNECTORS AND TERMINALS ACCORDING TO UL 488A AND 488B.
- END OF SECTION 15410**

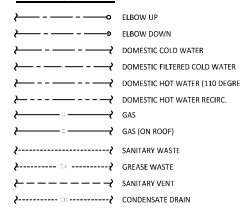
SECTION 15554 - FLUES AND VENTS

- PART 1 - GENERAL**
- 1.1 SECTION REQUIREMENTS**
- A. SUBMITTALS: NONE.
- PART 2 - PRODUCTS**
- 2.1 GAS VENTS**
- A. VENT/INTAKE FOR HIGH EFFICIENCY DOMESTIC WATER HEATIN, FOLLOW MANUFACTURER'S RECOMMENDATIONS FOR SIZING AND MATERIAL.
- B. ACCESSORIES: TEES, ELBOWS, INLEAKERS, DRAFT HOOD CONNECTIONS, METAL CAP WITH BIRD BARRIER, ADJUSTABLE ROOF FLASHING, STORM COLLAR, SUPPORT ASSEMBLY, THIMBLES, FIRESTOPPING SECTIONS, AND FASTENERS, FABRICATED OF SIMILAR MATERIALS AND DESIGNS AS VENT PIPE STRAIGHT SECTIONS.
- PART 3 - EXECUTION**
- 3.1 INSTALLATION**
- A. INSTALL VENTS ACCORDING TO SPLITTED MINIMUM CLEARANCES FROM COMBUSTIBLES.
- B. SEAL BETWEEN SECTIONS OF POSITIVE PRESSURE VENTS USING ONLY SEALANTS RECOMMENDED BY MANUFACTURER.
- C. SUPPORT VENTS AT INTERVALS TO SUPPORT THE WEIGHT OF THE VENT AND ALL ACCESSORIES, WITHOUT EXCEEDING LOADS OF APPLIANCES.
- END OF SECTION 15554**

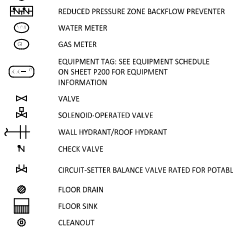
PLUMBING GENERAL NOTES

- A. GENERAL NOTES APPLY TO PLUMBING SHEETS.
- B. PLUMBING WORK SHALL BE DONE IN ACCORDANCE WITH THE PLUMBING CODE, LOCAL HEALTH DEPARTMENT STANDARDS, AND THE AUTHORITY HAVING JURISDICTION. SEE SHEET G001 FOR THE PREVAILING CODES.
- C. PIPING LOCATIONS ON DRAWINGS ARE SCHEMATIC. EXACT LOCATIONS ARE TO BE COORDINATED WITH THE EXISTING CONDITIONS AND THE WORK OF OTHER TRADES.
- D. CONCEAL PIPING UNLESS NOTED OTHERWISE. WATER SUPPLY PIPES SHALL BE INSTALLED LEVEL.
- E. PROVIDE SHUT-OFF VALVES FOR ISOLATION OF FIXTURE GROUPS AS SHOWN ON DRAWINGS IN ADDITION TO STOP VALVES AT EACH FIXTURE.
- F. PROVIDE STOP VALVES AT FATHURES.
- G. PROVIDE TRAP PRIMERS FOR FLOOR DRAINS AS SHOWN ON SHEET P100.
- H. WHERE THE WATER OR GAS SUPPLY LINE SIZE SHOWN IN THE PLUMBING DIAGRAMS DIFFERS FROM THE FIXTURE OR EQUIPMENT CONNECTION SIZE, USE SMALLER SIZE PIPE TO WITHIN 6" OF THE FIXTURE OR EQUIPMENT BEFORE TRANSITIONING TO THE CONNECTION SIZE.
- I. PIPING IN EXTERIOR WALLS SHALL BE INSTALLED BETWEEN THE INSULATION AND THE INTERIOR WALL FINISHING MATERIAL.
- J. INSULATE THE HOT AND COLD WATER, CONDENSATE DRAINAGE, AND STORM PIPING PER THE SPECIFICATIONS AND DETAIL B/P100.
- K. PROVIDE GAS SHUT-OFF VALVES AT EACH PIECE OF EQUIPMENT. PROVIDE ACCESSIBLE DIRT LEG AT THE BOTTOM OF VERTICAL SECTIONS OF GAS PIPE AND AT THE CONNECTION TO EACH PIECE OF EQUIPMENT.
- L. WHERE PLUMBING, ACCESSORIES, AND MATERIALS PROVIDED FOR DOMESTIC WATER SHALL BE LEAD FREE.
- M. PRIOR TO TURNOVER PERFORM A VIDEO INSPECTION OF THE SANITARY AND GREASE LINES FROM THE MAIN LINES WITH THE TENANT SPACE TO THE MAIN SEWER TO VERIFY THAT THE SANITARY WATER SYSTEM IS CONNECTED, CLEAN, AND FREE OF SAGS, BELLETS, BREAKS, AND DEBRIS. DELIVER A REPORT AND COPY OF THE VIDEO TO THE TENANT'S CONSTRUCTION MANAGER PRIOR TO TURNOVER.
- N. THE TERM "TURN-IN" MEANS SUPPLY AND DELIVER TO THE PROJECT SITE, READY FOR UNLOADING, UNPACKING, ASSEMBLY, INSTALLATION, AND SIMILAR OPERATIONS. THE TERM "INSTALL" DESCRIBES THE ENTIRE PROJECT SITE INCLUDING THE ACTUAL UNLOADING, UNPACKING, ASSEMBLY, ERECTING, PLACING, ANCHORING, APPLYING, WORKING TO DIMENSION, FINISHING, CURING, PROTECTING, CLEANING, AND SIMILAR OPERATIONS. THE TERM "PROVIDE" MEANS TO FURNISH AND INSTALL. COMPLETE AND READY FOR THE INTERIOR USE.
- O. PRIOR TO CONNECTION TO ANY EXISTING GAS SYSTEM PERFORM A GAS TEST TO VERIFY THE TYPE OF SYSTEM AND THE DIRECTION OF FLOW. REPORT ANY DEVIATION FROM THE CONSTRUCTION DOCUMENTS TO THE TENANT'S CONSTRUCTION MANAGER.
- P. PROVIDE SANITARY AND GREASE WASTE PIPES AT A MINIMUM SLOPE OF 1/4" PER FOOT UNLESS NOTED OTHERWISE.
- Q. PERFORM A FLOW TEST ON THE DOMESTIC WATER SERVICE AT POSSESSION, IF THE STATIC WATER PRESSURE IS OVER 80 PSI, THEN COORDINATE WITH CHROME CONTRACTOR MANAGER TO PROVIDE A PRESSURE REGULATOR (WITH F-USB-ZS OR EQUIV.), PROVIDE RESULTS OF THE FLOW TEST TO THE ENGINEER FOR CORRECTION OF ADEQUATE CAPACITY.

PLUMBING SYMBOLS



PLAN NOTE: SEE PLAN NOTES LISTED ON THE SAME SHEET FOR NOTE MEANING



ABBREVIATIONS

AF	ABOVE FINISHED FLOOR
AFX	ABOVE FINISHED GRADE
EX	EXISTING
FGD	FLOOR CLEANOUT
FD	FLOOR DRAIN
FS	FLOOR SINK
GC	GRADE CLEANOUT
CO2AS	TENANT'S CO2 ALARM SUPPLIER
GE	GENERAL CONTRACTOR
HES	TENANT'S HVAC EQUIPMENT SUPPLIER
HS	TENANT'S HODS SUPPLIER
YES	TENANT'S SITCHER EQUIPMENT SUPPLIER
TAB	TENANT'S TEST AND BALANCE VENDOR
TCC	TENANT'S CABING CONTRACTOR
TOC	TENANT'S DUCT CLEANER
TMS	TENANT'S ENERGY MANAGEMENT SYSTEM SUPPLIER
TLS	TENANT'S LIGHTING SUPPLIER
TNS	TENANT'S MENU BOARD SUPPLIER
TMS	TENANT'S MILLWORK SUPPLIER
TRP	TENANT'S PHONE SUPPLIER
TSV	TENANT'S SINK SUPPLIER
TK	TENANT'S RAILING SUPPLIER
TSV	TENANT'S SIGN SUPPLIER
TK	TENANT'S UV SANITIZER SUPPLIER
WCS	TENANT'S WALK-IN COOLERS SUPPLIER
WHS	TENANT'S WATER HEATER SUPPLIER

PLUMBING MATERIAL SCHEDULE		
CATEGORY	APPLICATION	ALLOWABLE MATERIAL
WATER SUPPLY PIPE	ABOVE GRADE	TYPE L COPPER TUBE
NATURAL GAS PIPE	CONCEALED	SCHED. 40 STEEL PIPE, MALLEABLE IRON THREADED FITTINGS
	EXPOSED	SCHED. 40 STEEL PIPE, MALLEABLE IRON THREADED FITTINGS, PAINTED
SANITARY WASTE & VENT PIPE	ABOVE GROUND, CONCEALED	PVC PLASTIC DWV PIPE AND FITTINGS
	ABOVE GROUND PREP SINK AND WASH BASINS SINK DRAINS	PVC PLASTIC DWV PIPE AND FITTINGS
	ABOVE GROUND HAND SINK DRAINS	BRASS WITH CHROME FINISH
	BELOW GROUND	PVC PLASTIC DWV PIPE AND FITTINGS



COPYRIGHT 2024
THE INFORMATION IS AN INSTRUMENT OF SERVICE
AND AS SUCH REMAINS THE PROPERTY OF
CHICOTE MEXICAN GRILL. PERMISSION IS GRANTED
FOR THE REPRODUCTION OF THIS INFORMATION FOR
USE BY THE RESTAURANT INDUSTRY AND CAN BE
REPRODUCED BY ANY RESTAURANT INDUSTRY MEMBER.
CHICOTE MEXICAN GRILL, INC.



CHICOTE MEXICAN GRILL, INC.
PO BOX 21366
COLUMBIA, MO 65221-2136
TELEPHONE: 616.382.2400
INTERNET: WWW.CHIPOTLE.COM

STORE NO.: 5494

EAST AURORA
168 MAIN STREET
EAST AURORA, NY 14052

Issue/Revised: 08/26/24

Permit Set: []

Drawn: []

Checked: []

AW: []

NH: []

Project No: []

CMS: 5494

Contract: []

PLUMBING SPECIFICATIONS (TI)

P011

CASE Engineering Inc.
1100 W. MAIN ST.
SUITE 100
CHICAGO, IL 60610
OFFICE: 312.367.9973
FAX: 312.367.9974

NOTE:

ENSURE ALL TRAP PRIMERS ARE ACCESSIBLE. DO NOT LOCATE ABOVE ANY LARGE PIECES OF EQUIPMENT.

NOTE:

COORDINATE ALL PLUMBING LOCATIONS WITH ELECTRICAL LOCATIONS. WATER LINES NOT TO BE INSTALLED ABOVE RECEPTACLES.

NOTE:

IF REQUIRED BY LOCAL A/H, LANDLORD SHALL FURNISH AND INSTALL AN APPROVED VENTING / TESTED BACKFLOW PREVENTION ASSEMBLY FOR THE MAIN WATER SERVICE LATERAL FEEDING THE BUILDING.

TENANT SHALL BE RESPONSIBLE TO PROVIDE A BACKFLOW PREVENTER FOR THE WATER FEED SERVICING THE DENISED PREMISE ONLY.

THE FIRE PROTECTION SYSTEM AND DOMESTIC WATER SYSTEM SHALL NOT BE SUPPLIED FROM THE SAME SERVICE. REFER TO FIRE PROTECTION DRAWINGS FOR ADDITIONAL INFORMATION.

ANY EXPOSED WATER LINES SHOULD BE RUN TIGHT TO THE BOTTOM OF ROOF DECK.

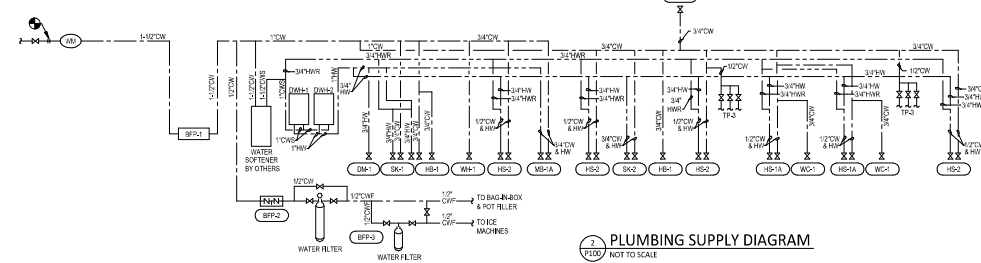
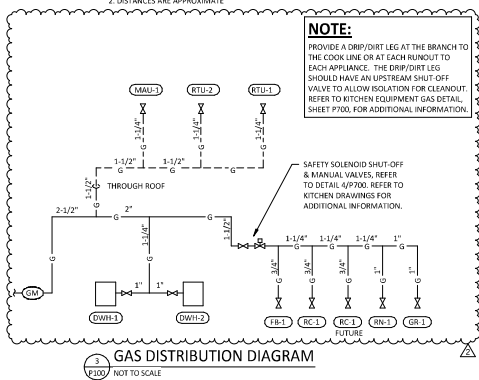
HOT WATER BALANCING NOTE:

PLUMBING CONTRACTOR SHALL PROVIDE JDMAR VALVE RECIRCULATOR "AUTOMATIC VARIABLE SET POINT BALANCING VALVE OR EQUIVALENT" AT EACH HOT WATER CIRCULATION CONNECTION TO THE HOT WATER SYSTEM. ENSURE VALVES ARE INSTALLED IN AN ACCESSIBLE LOCATION FOR ADJUSTMENT AND SERVICE. SYSTEM SHALL BE SET FOR A 5 DEGREE TEMPERATURE DIFFERENCE FROM WATER HEATER SET POINT. CONSULT WITH THE CIRCULATING PUMP MANUFACTURER FOR ADDITIONAL CONTROLS AND BALANCING INSTRUCTION.

CONNECTED GAS LOAD

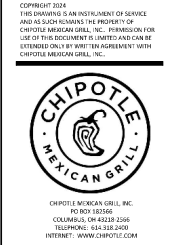
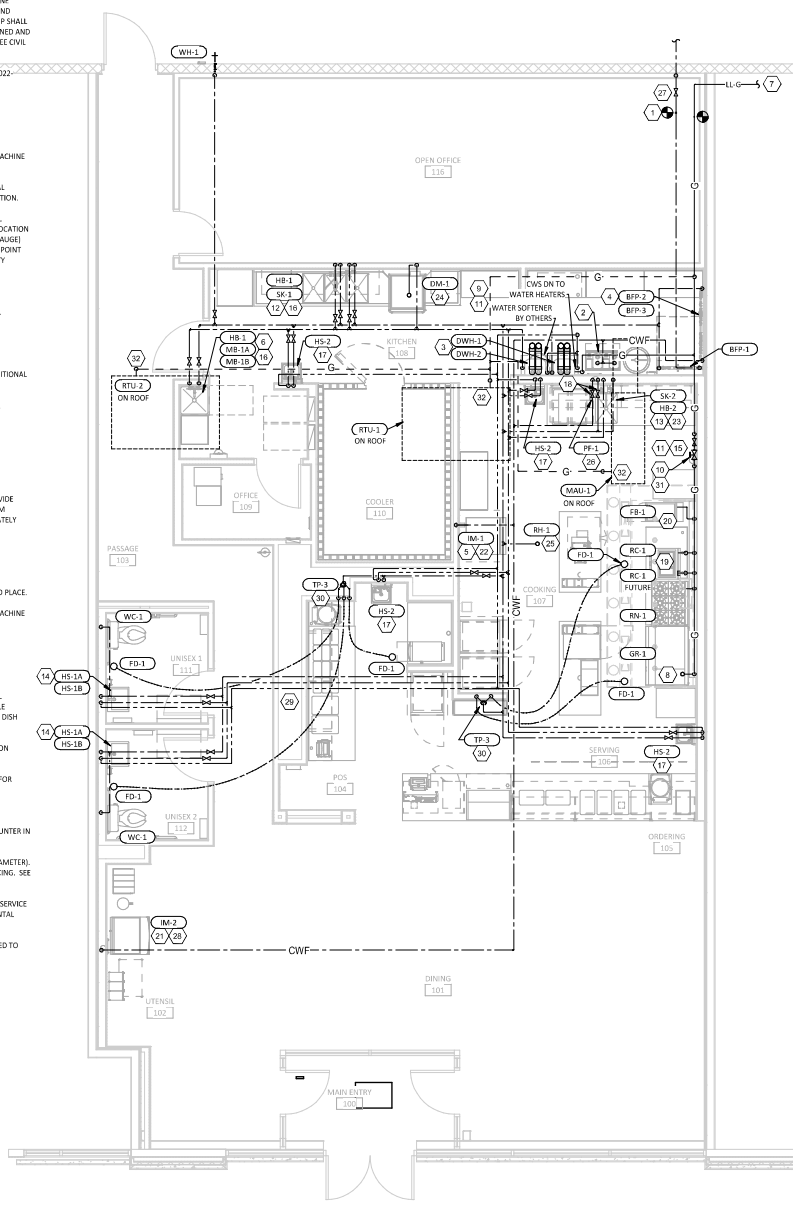
FIXTURE	TAG	MBH	EQUIVALENT LENGTH FROM METER [FT]
WATER HEATER	DWH-1	199	50
WATER HEATER	DWH-2	199	50
FRYER	FP-1	95	85
GRIDDLE	GR-1	107	95
MAKEUP AIR UNIT	MAU-1	225	100
RICE COOKER	RC-1	35	90
RICE COOKER (FUTURE)	RC-1	35	90
RANGE	RA-1	192	95
KITCHEN ROOFTOP UNIT	RTU-1	180	50
DINING ROOM ROOFTOP UNIT	RTU-2	240	65
Grand total		1507	MAX. 100

NOTES:
1. PRESSURE REQUIRED AFTER METER: 7" W.C.
2. DISTANCES ARE APPROXIMATE



PLUMBING SUPPLY PLAN NOTES

- ROUTE TO CONNECT TO LANDLORD FURNISHED, SEPARATELY METERED, 1-1/2" OR GREATER DEDICATED DOMESTIC COPPER WATER SUPPLY LINE SUPPLYING MINIMUM 45 CFM AT 60 PSI. LANDLORD SHALL PROVIDE PROOF OF DELIVERY PRESSURE (GASGE) AT POSSESSION AND PROVIDE AND INSTALL A BOOSTER PUMP AT LANDLORD'S EXPENSE IF WATER PRESSURE IS UNABLE TO BE PROVIDED AT MINIMUM OF 60 PSI. BOOSTER PUMP SHALL BE LOCATED IN A MUTUALLY AGREED UPON LOCATION WITHIN THE TENANT'S DENISED PREMISES WHERE THE UNIT CAN BE PROPELLY MAINTAINED AND SERVICED BY LANDLORD. COORDINATE EXACT LOCATION, INVERT ELEVATION, AND CONNECTION POINT IN FIELD PRIOR TO START OF WORK. SEE CIVIL UTILITY PLAN FOR CONTINUATION OF 1-1/2" DOMESTIC WATER SERVICE.
- PROVIDE 1/2" FILTERED WATER TO THE BAG-IN-BOX SODA CARBONATOR AT 102" AFF. SODA CARBONATOR SHALL HAVE AN INTEGRAL ASSE 1022-RATED CARBONATED BEVERAGE BACKFLOW PREVENTION DEVICE.
- PROVIDE WATER HEATERS DWH-1 AND DWH-2 PER DETAIL 1/P700.
- PROVIDE WATER FILTERS MOUNTED TO WALL PER DETAIL 11/P700. PROVIDE 1/2" SUPPLY PIPES FROM FILTERS TO ICE MAKER AND SODA CARBONATOR AS SHOWN.
- PROVIDE 1/2" FILTERED WATER ROUGH-IN TO THE ICE MAKER AT 56" AFF. PROVIDE 6" LONG STAINLESS STEEL FLEXIBLE BRAIDED WASHING MACHINE WATER CONNECTOR WITH MINIMUM 0.43" ID (BRASSCRAFT 5132-72WA-F OR EQUAL) FOR FINAL CONNECTION TO ICE MAKER.
- PROVIDE DOMESTIC WATER ROUGH-INS FOR THE MOP BASIN FAUCET AT 36" AFF. PROVIDE DOMESTIC WATER ROUGH-INS FOR THE CHEMICAL DISPENSER FAUCET (HB-3) AT 64" AFF DIRECTLY ABOVE THE MOP BASIN FAUCET. SEE ARCHITECTURAL ELEVATION FOR ADDITIONAL INFORMATION.
- ROUTE NEW GAS PIPING TO CONNECT TO EXISTING METER BANK. LANDLORD SHALL REPLACE EXISTING METER IF REQUIRED. LANDLORD SHALL FURNISH AND INSTALL A MINIMUM OF 1500MBH NATURAL GAS SERVICE WITH A DELIVERY PRESSURE OF 7" WATER COLUMN ROUTED TO A LOCATION WITHIN THE PREMISES IN ACCORDANCE WITH TENANT'S PLANS FOR THE PREMISES. LANDLORD TO PROVIDE PROOF OF DELIVERY PRESSURE (GASGE) AT POSSESSION AND REGULATE PRESSURE IF REQUIRED. GAS PIPING SHALL BE APPROPRIATELY SIZED FROM LANDLORD METER LOCATION TO A POINT OF DELIVERY WITHIN THE TENANT'S PREMISES IN ACCORDANCE WITH TENANT'S PLANS FOR THE PREMISES. ALL RELATED NATURAL GAS UTILITY COMPANY CHARGES SHALL BE PAID BY LANDLORD. SEE CIVIL UTILITY PLAN FOR ON-SITE GAS ROUTING.
- PROVIDE GAS CONNECTIONS TO THE COOKING EQUIPMENT PER DETAIL 7/P700.
- SUPPORT THE GAS PIPE ON THE ROOF PER DETAIL 5/P700. WOOD BLOCKING IS NOT AN ACCEPTABLE METHOD OF SUPPORTING THE GAS PIPE.
- PROVIDE ACCESSIBLE LINE-SIZED GAS VALVE, DIRT LEG, AND UNION AT GAS CONNECTION TO KITCHEN EQUIPMENT.
- REFER TO ARCHITECTURAL DRAWINGS FOR PAINTING OF INTERIOR AND EXTERIOR EXPOSED GAS PIPE.
- PROVIDE DOMESTIC WATER ROUGH-INS FOR THE CHEMICAL DISPENSER FAUCET (HB-1) AT 52" AFF. SEE ARCHITECTURAL ELEVATION FOR ADDITIONAL INFORMATION.
- PROVIDE DOMESTIC WATER ROUGH-INS FOR THE VICTORY WASH DISPENSER FAUCET (HB-2) AT 52" AFF. SEE ARCHITECTURAL ELEVATION FOR ADDITIONAL INFORMATION.
- PROVIDE ROUGH-INS TO RESTROOM HAND SINKS AS SHOWN IN DETAIL 14/P700.
- PROVIDE KITCHEN EQUIPMENT GAS SHUTOFF 6" BELOW THE CEILING PER DETAIL 4/P700.
- CONNECT CHEMICAL DISPENSER TO HB-1. CHEMICAL DISPENSER HAS AN INTEGRAL AIR GAP AS IS SHOWN IN DETAIL 10/P700.
- PROVIDE ASSE 1016/1070 POINT-OF-USE THERMOSTATIC MIXING VALVE, WATTS LFUSG-B, ON WATER SUPPLY TO KITCHEN HAND SINKS. PROVIDE ANGLE STOP BEHIND SINK, PASTOR MIXING VALVE TO WALL, AND MAKE FINAL CONNECTION FROM ANGLE STOPS TO MIXING VALVE AND FROM MIXING VALVE TO FAUCET USING BRAIDED STAINLESS STEEL HOSE. ADJUST MIXING VALVE FOR A DISCHARGE TEMPERATURES OF APPROXIMATELY 110°F.
- PROVIDE ACCESSIBLE VALVE IN WATER SUPPLY TO FIXTURE AS SHOWN.
- PROVIDE GAS CONNECTION TO THE RICE COOKER PER DETAIL 4/P700. ADD EXTRA GAS STUB FOR FUTURE RICE COOKER CONNECTION.
- PROVIDE GAS ROUGH-IN TO FRYER BEHIND RICE COOKER TABLE SO THAT VALVES AND DIRT LEG ARE ACCESSIBLE ONCE FRYER IS SECURED UNDER TABLE.
- PROVIDE 1/2" FILTERED WATER ROUGH-IN TO THE ICE MAKER AT 24" AFF. PROVIDE 6" LONG STAINLESS STEEL FLEXIBLE BRAIDED WASHING MACHINE WATER CONNECTOR WITH MINIMUM 0.43" ID (BRASSCRAFT 5132-72WA-F OR EQUAL) FOR FINAL CONNECTION TO ICE MAKER.
- INSTALL RGF IMSD ICE MAKER SANITIZER FURNISHED BY TUV PER CHIPOTLE'S INSTALLATION INSTRUCTIONS.
- PROVIDE 3/4" DOMESTIC HOT AND COLD WATER ROUGH-INS FOR THE PREP SINK (SK-2) FAUCET AT 24" AFF TO ALLOW FOR THE VICTORY WAS CHEMICAL DOCK TO BE INSTALLED DIRECTLY BELOW THE PREP SINK BASIN.
- PROVIDE 3/4" HOT WATER TO THE DISH MACHINE, MAKING FINAL CONNECTION USING 3/4" COPPER PIPE ONCE DISH MACHINE IS IN ITS FINAL LOCATION (FLEXIBLE CONNECTION IS NOT ACCEPTABLE). PROVIDE WATER HAMMER ARRESTOR ON HOT WATER LINE. PROVIDE AN ACCESSIBLE SHUTOFF VALVE AND UNION BELOW THE DISH MACHINE AND INSTALL THE STRAINER AND PRESSURE REDUCING VALVE FURNISHED WITH THE DISH MACHINE IN AN ACCESSIBLE LOCATION AT THE CONNECTION TO THE UNIT.
- PROVIDE ROOF HYDRANT RH-1 WITH BOTTOM OF NOZZLE INSTALLED 24" ABOVE THE BOTTOM OF ROOF DECK. PROVIDE ACCESSIBLE ISOLATION VALVE IN WATER SUPPLY TO ROOF HYDRANT. SUPPORT ROOF HYDRANT PER THE MANUFACTURER'S INSTALLATION INSTRUCTIONS.
- PROVIDE FILTERED DOMESTIC WATER ROUGH-IN FOR THE SPEED FILL POT FILLER FAUCET (FP-3) AT 40" AFF. SEE ARCHITECTURAL ELEVATION FOR DETAIL.
- PROVIDE WATER SERVICE ENTRY PER DETAIL 16/P700.
- INSTALL RGF IMSD ICE MAKER SANITIZER FURNISHED BY TUV PER CHIPOTLE'S INSTALLATION INSTRUCTIONS. LOCATE IMSD BELOW UTENSIL COUNTER IN A LOCATION THAT DOES NOT INTERFERE WITH THE ROLLING RACK BELOW THE UTENSIL COUNTER.
- PENETRATIONS THROUGH SHEAR WALL SHALL BE LIMITED TO 10" DIAMETERS (OR A GROUP OF PENETRATIONS ALL CONTAINED WITHIN 10" DIAMETER). IF LARGER PENETRATIONS OR GROUPS OF PENETRATIONS ARE REQUIRED COORDINATE WITH STRUCTURAL ENGINEER FOR APPROPRIATE BRACING. SEE STRUCTURAL DRAWINGS FOR SHEAR WALL LOCATION.
- PROVIDE ACCESSIBLE TRAP PRIMER ABOVE LAY-IN CEILING AS SHOWN. INSTALL PER MANUFACTURER'S INSTALLATION INSTRUCTIONS WITH A SERVICE VALVE AT THE TRAP PRIMER INLET. PROVIDE 1/2" DISTRIBUTION PIPES TO FLOOR DRAIN TRAP PRIMER CONNECTIONS AS SHOWN. HORIZONTAL DISTRIBUTION PIPING SHALL HAVE CONTINUOUS SLOPE TO THE FLOOR DRAIN.
- Gas down to kitchen equipment. PROVIDE AUTOMATIC EMERGENCY FUEL SHUT-OFF VALVE IN RISER, EMERGENCY SHUT-OFF INTERLOCKED TO HOOD FIRE SUPPRESSION SYSTEM. COORDINATE EXACT LOCATION WITH THE KITCHEN HOOD-VENDOR AND LOCAL A/H REQUIREMENTS.
- PROVIDE GAS CONNECTION TO ROOFTOP EQUIPMENT RTU-1, RTU-2, AND MAU-1.



STORE NO.: 5494
EAST AURORA
168 MAIN STREET
EAST AURORA, NY 14052

Issue Record:

DATE	PERMIT SET
08/26/24	

Revisions:

NO.	DATE	OWNER CHANGES	CITY COMMENTS
1	09/09/24		
2	10/27/2024		

Drawn: []
Checked: []
AK: NH

Project No: CMG 5494

Contract:

PLUMBING PLAN
WATER & GAS

P100

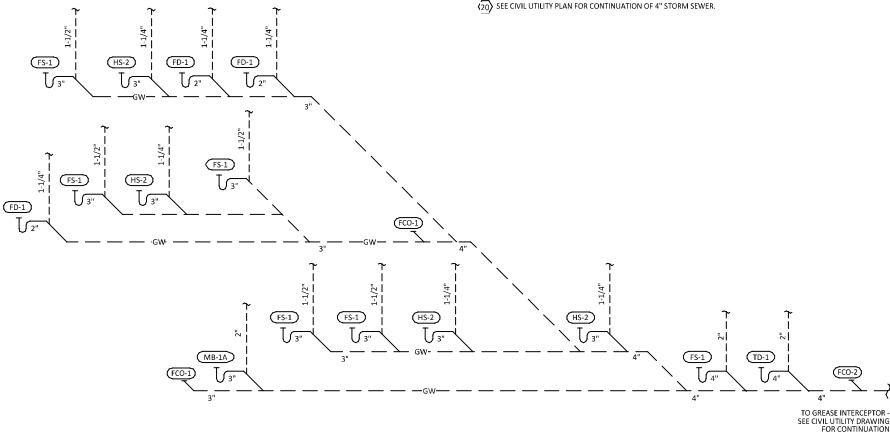


DRAINAGE FIXTURE UNITS FOR GREASE WASTE			
FIXTURE	DRAINAGE FIXTURE UNITS	NUMBER OF FIXTURES	TOTAL DRAINAGE FIXTURE UNITS
2" FLOOR DRAINS	3	5	15
3" FLOOR SINK	4	4	20
4" FLOOR SINK	4	1	4
4" TRENCH DRAIN	5	1	5
MOP BASIN	3	1	3
HAND SINKS	2	4	8
TOTAL DRAINAGE FIXTURE UNITS			55

GRAVITY GREASE INTERCEPTOR SIZING	
DFU'S	INTERCEPTOR VOLUME
8	500 GALLONS
21	750 GALLONS
36	1,000 GALLONS
90	1,750 GALLONS
172	1,500 GALLONS

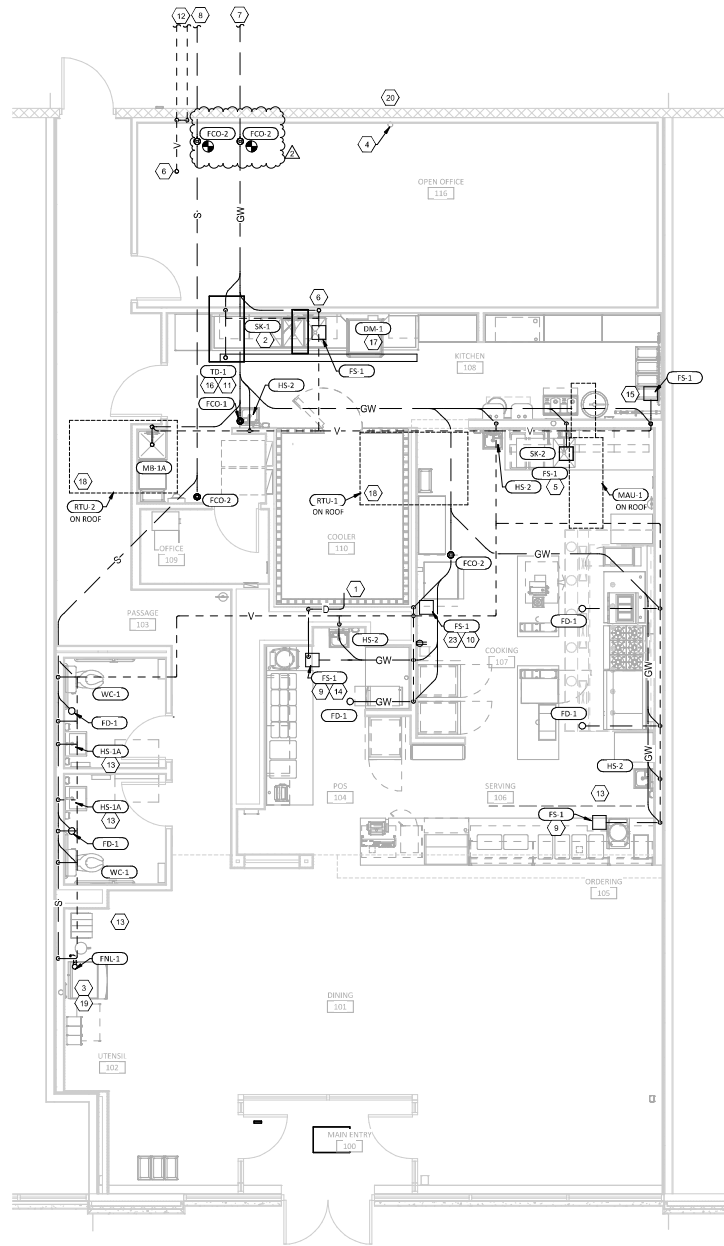
PLUMBING WASTE AND VENT PLAN NOTES

- PROVIDE 3/4" CONDENSATE DRAIN FROM THE WALK-IN COOLER EVAPORATOR TO THE FLOOR SINK BELOW THE ICE MAKER AS SHOWN. SLOPE CONDENSATE DRAIN A MINIMUM OF 1" PER FOOT. HOLD EXPOSED CONDENSATE DRAIN IN WALK-IN COOLER AS HIGH AS POSSIBLE. CONCEAL DRAIN PIPING WITHIN FRAMED WALLS AS SHOWN. DISCHARGE THROUGH AN AIR GAP. MAKE FINAL CONNECTION TO DRAINATOR INSIDE WALK-IN COOLER USING A UNION. CONDENSATE DRAIN SHOULD PENETRATE WALL BEHIND ICE MAKER AT 8" AFF AND BE SECURED TO FLOOR UNDER ICE MAKER.
- PROVIDE DRAIN CONNECTIONS TO THE THREE COMPARTMENT SINK PER DETAIL 2/P700.
- COORDINATE ROUTING OF SODA BUNDLES WITH COCA-COLA TECHNICIAN FROM BAG-IN-BOX AREA TO EACH SODA FOUNTAIN. OTHER THAN WITHIN THE WALLS DOWN TO THE DRIVER BOX THE SODA BUNDLE SHALL BE ROUTED OVERHEAD WITHOUT CONDUIT. COORDINATE SUPPORT AND ROUTING OF THE SODA LINE BUNDLES WITH COCA-COLA TECHNICIAN DURING ROUGH IN AND PROVIDE NECESSARY SUPPORTS. SEE ARCHITECTURAL DRAWINGS FOR SODA BUNDLE TERMINATION LOCATION AND PROVIDE TERMINATION PER DETAIL 12/P700.
- EXISTING STORM DRAIN PIPING, VERIFY EXACT LOCATION IN FIELD PRIOR TO START OF WORK, REPLACE IF REQUIRED.
- PROVIDE DRAIN LINES FROM THE FOOD PREP SINK TO THE FLOOR SINK. PROVIDE AN AIR GAP AT THE DISCHARGE TO THE FLOOR SINK.
- PROVIDE A 3" VENT THROUGH THE ROOF PER DETAIL 3/P700.
- PROVIDE GREASE INTERCEPTOR GI-1. SEE CIVIL UTILITY PLAN FOR GI-1 LOCATION AND FOR CONTINUATION OF 4" GREASE WASTE PIPE TO GI-1.
- SEE CIVIL UTILITY PLAN FOR CONTINUATION OF 4" SANITARY SEWER.
- PROVIDE 3/4" VALVED DRAIN FROM HOT FOOD TABLE TO THE FLOOR SINK. DRAIN THROUGH AN AIR GAP.
- PROVIDE INSULATED COPPER DRAIN LINES FROM THE TEA TRAY DRAIN AND THE SODA MACHINE DRAIN TO THE FLOOR SINK. DRAIN THROUGH AN AIR GAP. HOLD TEA TRAY DRAIN AS HIGH AS POSSIBLE AND SECURE BELOW THE UTENSIL COUNTER.
- TRIM TRENCH DRAIN ENDS PER THE MANUFACTURER'S INSTALLATION INSTRUCTIONS PRIOR TO INSTALLATION SO THAT GRATE FITS WITHOUT GAPS. INSTALL TRENCH DRAIN WITH SLIGHT POSITIVE SLOPE TOWARDS THE DRAIN CONNECTION TO AVOID STANDING WATER IN TRENCH DRAIN.
- PROVIDE 2" VENT TO GREASE INTERCEPTOR GI-1. SEE CIVIL UTILITY PLAN FOR GI-1 LOCATION.
- DO NOT PROVIDE WALL CLEANOUTS ON TILE OR PUBLICLY-VISIBLE WALLS. IF A WALL CLEANOUT IS REQUIRED ON THESE SURFACE COORDINATE THE EXACT LOCATION WITH CHIPOTLE'S CONSTRUCTION MANAGER.
- PROVIDE INDIRECT WASTE AND CONDENSATE DRAINS FROM FIXTURES OTHER THAN KITCHEN SINKS CONCEALED IN THE WALL AS SHOWN IN DETAIL 9/P700.
- PROVIDE DRAIN FROM WATER FILTER BFP TO FLOOR DRAIN CONCEALED IN THE WALL AS SHOWN IN DETAIL 9/P700.
- PROVIDE TRENCH DRAIN AS SHOWN PER DETAIL 15/P700.
- INSTALL DRAIN HOSE FURNISHED WITH DISH MACHINE FROM DISH MACHINE OUTLET TO FLOOR SINK. HOLD DRAIN HOSE TIGHT TO WALL AND SECURE TO 3 COMP SINK DRAIN TO MAINTAIN AN AIR GAP AT THE FLOOR SINK.
- PROVIDE CONDENSATE TRAP ON RTU PER DETAIL 13/P700.
- PROVIDE INSULATED COPPER DRAIN LINES FOR THE TEA TRAY DRAIN AND THE SODA MACHINE DRAIN. ROUTE TEA TRAY AND SODA MACHINE DRAINS BEHIND THE SHELF AND COLD TABLE TO THE FLOOR SINK. DRAIN THROUGH AN AIR GAP.
- SEE CIVIL UTILITY PLAN FOR CONTINUATION OF 4" STORM SEWER.



7 SANITARY WASTE & VENT DIAGRAM
NOT TO SCALE

TO GREASE INTERCEPTOR -
SEE CIVIL UTILITY DRAWING
FOR CONTINUATION



SANITARY WASTE & VENT PLAN
3/4" = 1'-0"



STORE NO.: 5494
EAST AURORA
168 MAIN STREET
EAST AURORA, NY 14052

Issue/Revised:	Checked:	Permit Set:
08/26/24		

Revisions:	Owner Changes:	City Comments:
1 09/09/24		
2 10/17/2024		

Drawn: AK
Checked: NH

Project No: CMG 5494

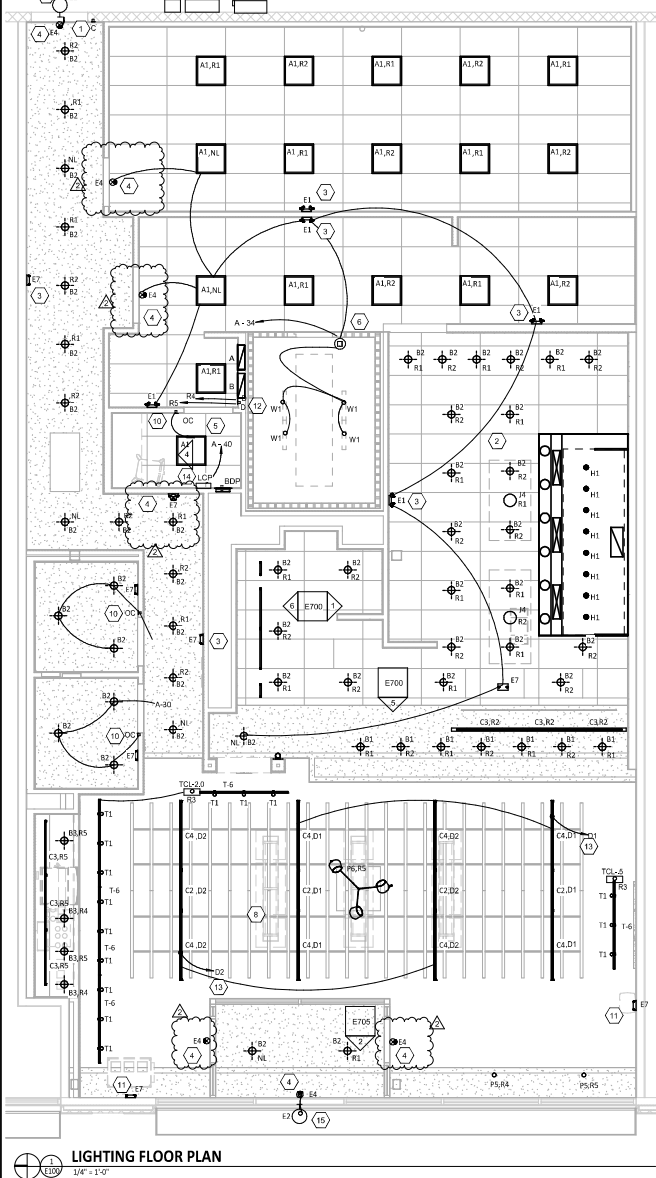
**PLUMBING PLAN
WASTE & VENT**

P110



LIGHTING CONTROL PANEL SCHEDULE: LCP

RELAY	PANEL	CIRCUIT	AREA SERVED	CONTROL	TIME ON	TIME OFF	DIMMER CONTROL	NOTES
R1	A	32	KITCHEN A	TIMECLOCK	7:00:00 AM	12:00:00 AM	N/A	SINGLE POLE (NC)
R2	A	34	KITCHEN B	TIMECLOCK	7:00:00 AM	12:00:00 AM	N/A	SINGLE POLE (NC)
R3			SPARE					SINGLE POLE (NC)
R4	A	30	DINING ROOM A	TIMECLOCK	10:00:00 AM	12:00:00 AM	N/A	SINGLE POLE (NC)
R5	A	30	DINING ROOM B	TIMECLOCK	10:00:00 AM	12:00:00 AM	N/A	SINGLE POLE (NC)
R6	A	30	DINING ROOM DL	TIMECLOCK	10:00:00 AM	12:00:00 AM	N/A	SINGLE POLE (NC)
R7	A	28	RR EXHAUST FAN	TIMECLOCK	7:00:00 AM	12:00:00 AM	N/A	SINGLE POLE (NC)
R8	A	36	EXT. LIGHTING/STORAGE	TIMECLOCK	SUNRISE_THRU	12:00:00 AM	N/A	SINGLE POLE (NC)



ELECTRICAL LIGHTING PLAN NOTES

- INSTALL WALL MOUNTED LIGHTING OVERRIDE SWITCH AND CONNECT TO LCP AS SHOWN IN DETAIL 6/E710.
- FOR UNCRUCIATED LIGHT FIXTURES, CONNECT TO RELAY CIRCUIT INDICATED NEXT TO THE FIXTURE TAG THROUGH THE LIGHTING CONTROL PANEL (LCP) UNLESS NOTED OTHERWISE.
- WALL MOUNT THE EMERGENCY LIGHT FIXTURE AT 6" BELOW THE CEILING UNLESS NOTED OTHERWISE.
- VERIFY MOUNTING HEIGHT OF EXIT SIGN PRIOR TO ROUGH IN. EXIT SIGN MUST BE VISIBLE FROM AREA SERVED AFTER BUILDING SYSTEMS HAVE BEEN INSTALLED. SEE ARCHITECTURAL ELEVATIONS FOR FURTHER INFORMATION.
- PROVIDE DOUBLE-POLE SINGLE THROW LIGHT SWITCH IN OFFICE FOR CONTROL OF OFFICE LIGHT AND RESTROOM EXHAUST FAN.
- INSTALL LIGHT FIXTURES FURNISHED WITH THE WALK-IN COOLER. PROVIDE UNSWITCHED CONDUCTOR FROM LIGHTING CIRCUIT TO WALK-IN COOLER LIGHTING J-BOX AND FROM J-BOX TO LIGHT FIXTURES AS SHOWN. CONDUIT FROM LIGHT FIXTURES SHALL BE ROUTED ON THE INTERIOR OF THE WALK-IN COOLER SEAL INTERIOR AND EXTERIOR OF CONDUITS WHERE THEY PASS THROUGH THE WALK-IN COOLER ENVELOPE PER THE NEC.
- PROVIDE (2) GFCI RECEPTACLES FOR UNDERSHELF LIGHTING AS SHOWN. CONNECT TO SWITCHED LIG OF THE KITCHEN LIGHTING CIRCUIT. SEE ELEVATIONS ON SHEET E700 FOR RECEPTACLE LOCATIONS, HEIGHTS, AND CIRCUITING. INSTALL RECEPTACLES IN A HORIZONTAL ORIENTATION.
- PROVIDE UNISUBSTR AS SHOWN ON THE ARCHITECTURAL RCP PER THE ARCHITECTURAL UNISUBSTR DETAIL TYPICAL.
- NOT USED.
- INSTALL WALL MOUNTED OCCUPANCY SENSOR FURNISHED BY LIGHTING SUPPLIER AT 42" AFF. ADJUST OCCUPANCY SENSOR TO PROVIDE AUTOMATIC ON/AUTOMATIC OFF OPERATION WITH A FIXED TIMER OF 30 MINUTES AND WITH BOTH THE PASSIVE INFRARED AND ULTRASONIC SENSORS ENABLED.
- WALL MOUNT THE EMERGENCY LIGHT FIXTURE AS SHOWN IN THE DINING ROOM INTERIOR ELEVATIONS ON SHEET E110.
- INSTALL WALL-MOUNTED DIMMERS ABOVE PANELBOARDS 6" ABOVE LAY-IN CEILING FOR CONTROL OF DINING ROOM OVERHEAD SQUARE LED. CONNECT DIMMERS TO RELAYS SHOWN THROUGH THE LIGHTING CONTROL PANEL. SET DIMMERS AT 50%.
- CONNECT DINING ROOM (RELAY CIRCUITS R4, AND R5) SQUARE LED LIGHTS TO THE RELAY INDICATED THROUGH THE CORRESPONDING WALL MOUNTED DIMMER INSTALLED ABOVE THE PANELBOARDS.
- INSTALL LIGHTING CONTROL SYSTEM PER DETAIL 6/E710.
- INSTALL E2 REMOTE EMERGENCY HEAD LIGHT TO BOTTOM OF CANOPY. CONCEAL LOW VOLTAGE WIRING FROM EXT SIGN TO REMOTE EMERGENCY LIGHT.

LIGHTING CONTROL COMPONENTS SCHEDULE

	DESCRIPTION	QUANTITY	FURNISHED BY	INSTALLED BY	MANUFACTURER	MODEL	REMARKS
LCP	NIGHT LIGHTING CONTROL PANEL	1	TLS	GC	ACUITY	APP INTERCOM NLT 8PK 40VX ALK 4M 5M DMC CP16L	8 RELAY PANEL FOR DIMMING CONTROL WITH FLUSH MOUNT ENCLOSURE, AND DIGITAL TIME CLOCK
S C	WALL-MOUNTED CHRESSA SWITCH	1	TLS	GC	ACUITY	HPDDMA 4P	SEE LIGHTING CONTROL DIAGRAM FOR SWITCH CONFIGURATION
S D	WALL-MOUNTED DIMMER SWITCH	2	TLS	GC	COOPER	SALOOP-W	SLIDE DIMMER COMPATIBLE WITH UP TO 300W LED LIGHTING, SET AT 50% IN DINING ROOM LIGHTS FLICKER AT THIS DIMMER. FITTING WITH GC SHALL PROVIDE LUTRON PVCL233P DIMMER AS REPLACEMENT.
S OC	WALL-MOUNTED LINE VOLTAGE OCCUPANCY SENSOR	3	TLS	GC	HUBBELL	LHMTS 1-N-WH	WHITE DUAL TECHNOLOGY SINGLE RELAY WITH 1 BUTTON AND NEUTRAL WIRING

LIGHTING FIXTURE SCHEDULE

TAG	QUANTITY	TYPE	MOUNT	FURNISHED BY	INSTALLED BY	MANUFACTURER	MODEL	LAMP(S)	VOLTS	WATT S	SPECIAL REQUIREMENTS
A1	17	2x2 LED LENSED TROFFER	LAY-IN	TLS	GC	NORA LIGHTING	NPDR-E22934 W	(1) 3000K LED	120	30	COMPATIBLE WITH 0-10V DIMMING, FACTORY LOCKED TO 3000K
B1	7	RECESSED 6IN CAN LIGHT	CEILING	TLS	GC	NORA LIGHTING	NHC-6Q24ATFL with	(1) 17W ECOSTORY ECO-PAR38C -17-GU24-277K-220	120	17	
B2	47	RECESSED 6IN CAN LIGHT W/ LED TRIM	CEILING	TLS	GC	NORA LIGHTING	NHC-6G24ATFL WITH NHCBC-6S130W LED TRIM	LED (2) 52700K W/ GU 24 BASE INTEGRAL 3000K LED	120	17	LED TRIM FURNISHED WITH GU24 SOCKET ADAPTER
B3	4	RECESSED 6IN CAN LIGHT W/ BLACK LED TRIM	CEILING	TLS	GC	NORA LIGHTING	NHC-6G24ATFL WITH NHCBC-6S130W LED TRIM	INTEGRAL 3000K LED	120	12	BLACK LED TRIM FURNISHED WITH GU24 SOCKET
C0	2	LOW PROFILE LED - 1 FT	SURFACE	TLS	GC	HERA LIGHTING	ELLED122WW	INTEGRAL 3000K LED	120	5	FURNISHED WITH COVERS, CONNECTORS, AND ONE HARDWARE BOX OR CORD/PLUG PER SECTION
C1	4	LOW PROFILE LED - 2 FT	SURFACE	TLS	GC	HERA LIGHTING	ELLED22WW	INTEGRAL 3000K LED	120	9	FURNISHED WITH COVERS, CONNECTORS, AND ONE HARDWARE BOX OR CORD/PLUG PER SECTION
C2	6	LOW PROFILE LED - 3 FT	SURFACE	TLS	GC	HERA LIGHTING	ELLED34WW	INTEGRAL 3000K LED	120	12	FURNISHED WITH COVERS, CONNECTORS, AND ONE HARDWARE BOX OR CORD/PLUG PER SECTION
C3	6	LOW PROFILE LED - 4 FT	SURFACE	TLS	GC	HERA LIGHTING	ELLED46WW	INTEGRAL 3000K LED	120	15	FURNISHED WITH COVERS, CONNECTORS, AND ONE HARDWARE BOX OR CORD/PLUG PER SECTION
C4	8	LOW PROFILE LED - 5 FT	SURFACE	TLS	GC	HERA LIGHTING	ELLED58WW	INTEGRAL 3000K LED	120	18	FURNISHED WITH COVERS, CONNECTORS, AND ONE HARDWARE BOX OR CORD/PLUG PER SECTION
E1	5	EMERGENCY LIGHT - DUAL HEAD	VARIOUS	TLS	GC	EXITRONIX	LED-90	(2) SPECIAL LED	120	2	90 MINUTE BATTERY BACKUP
E2	3	EXTERIOR REMOTE EMERGENCY LIGHT	VARIOUS	TLS	GC	EXITRONIX	MLED1-B-WP	(1) SPECIAL LED	4	1	LOW VOLTAGE REMOTE EMERGENCY LIGHT POWERED BY REMOTE-CAPABLE EXIT SIGN
E4	6	WHITE EXIT SIGN WITH EMERGENCY LIGHT - STANDARD RED LETTERS	VARIOUS	TLS	GC	EXITRONIX	GLED4-JWH	(1) SPECIAL LED	120	2	90 MINUTE BATTERY BACKUP WITH INTEGRAL EMERGENCY LIGHT, REMOTE HEAD CAPABLE
E7	8	EMERGENCY LIGHT	VARIOUS	TLS	GC	EXITRONIX	EV2	(2) 1W INTEGRAL LED	120	1	90 MINUTE BATTERY BACKUP
H1	8	HOOD LIGHT	SURFACE	THS/TLS	THS	FIXTURE FURNISHED WITH HOOD	FURNISHED WITH HOOD	(1) TCP L18A19N1S27K	120	23	INSTALL LAMP/FURNISHED SEPARATELY BY LIGHTING SUPPLIER
J4	2	DECORATIVE PENDANT	SURFACE	TLS	GC	BARNLIGHT	BLE-C-CP110-ASH-100-S BK-100-CAW	GREEN CREATIVE 9A18DIM927/GU24/R	120	9	WITH BLACK LAMP SHADE, BLACK CORD, AND OAK LAMP HOLDER
P5	2	PENDANT	PENDANT	TLS	GC	H/LITE MFG	HLC-91CB12-91/20W LBL	TCP FG25M4927/CCO	120	5	ADJUST CORD LENGTH FOR MOUNTING HEIGHT CALLED FOR IN ARCHITECTURAL DRAWINGS
PR	1	DECORATIVE DINING ROOM PENDANT	PENDANT	TLS	GC	BARNLIGHT	BLE-C-JOT-133-36530-3	INTEGRAL LED	120	30	HARDWIRED SET OF (3) HEADS WITH UNIVERSAL CAN CHOP AND STANDARD BLACK CABLES
T1	14	TRACK (6 FEET)	TRACK	TLS	GC	JUNO	R650L 30K 90CR1 PDIM WFL BL	INTEGRAL LED	120	10	BLACK CYLINDER TRACK HEAD W/ UNIVERSAL 120V TRAC ADAPTER AND WIDE FLOOD BEAM
T-6	4	TRACK (6 FEET)	SUSPENDED	TLS	GC	JUNO	T 6FT BK	N/A	120	0	SINGLE CIRCUIT, BLACK FINISH
T-8	0	TRACK (6 FEET)	SUSPENDED	TLS	GC	JUNO	T 8FT BK	N/A	120	0	SINGLE CIRCUIT, BLACK FINISH
XB	0	LED CHANNEL LIGHT	SUSPENDED	TLS	GC	PARADIGM LED	PL-AMC-2415 W/ OPAL LENS AND END CAPS	PL-FLEXRS90-WV-WP-3000K	120		FURNISHED W/ REMOTE-MOUNTED NEMA 3R DIMMABLE PL-PS-M10-DM-34 LED DRIVER. SEE PLAN FOR LENGTHS.
TCL-0.5	1	CURRENT LIMITER (60W)	SURFACE	TLS	GC	JUNO	TCLPM11 BL W/ TCLCB 2A BLACK	N/A	120	0	BLACK CURRENT LIMITING END FEED
TCL-2	1	CURRENT LIMITER (240W)	SURFACE	TLS	GC	JUNO	TCLPM11 BL W/ TCLCB 2A BLACK	N/A	120	0	BLACK CURRENT LIMITING END FEED

LIGHTING FIXTURE SCHEDULE NOTES
 A. FLUORESCENT LAMPS NOT INCLUDED WITH THE FIXTURES ARE TO BE MANUFACTURED BY SYLVANIA UNLESS OTHERWISE NOTED. PHILIPS FLUORESCENT LAMPS WILL BE AN ACCEPTABLE ALTERNATE.
 B. SEE THE ARCHITECTURAL REFLECTED CEILING PLAN FOR EXACT LIGHT LOCATIONS.
 C. SEE THE ARCHITECTURAL LIGHTING DETAILS FOR FIXTURE CONSTRUCTION DETAILS.



COPYRIGHT 2024
 THIS DOCUMENT IS AN INSTRUMENT OF SERVICE AND AS SUCH REMAINS THE PROPERTY OF CHIPOTLE MEXICAN GRILL, INC. PERMISSION FOR USE OF THIS DOCUMENT IS LIMITED AND CAN BE EXTENDED ONLY BY WRITTEN AGREEMENT WITH CHIPOTLE MEXICAN GRILL, INC.



STORE NO.: 5494
 EAST AURORA
 168 MAIN STREET
 EAST AURORA, NY 14052

DATE	FOR PERMIT	CITY COMMENTS
12/04/23		
2/10/17/2024		

Drawn: JIV
 Checkd: BW

Project No: 5494
 CNG 5494

ELECTRICAL LIGHTING PLAN



E100