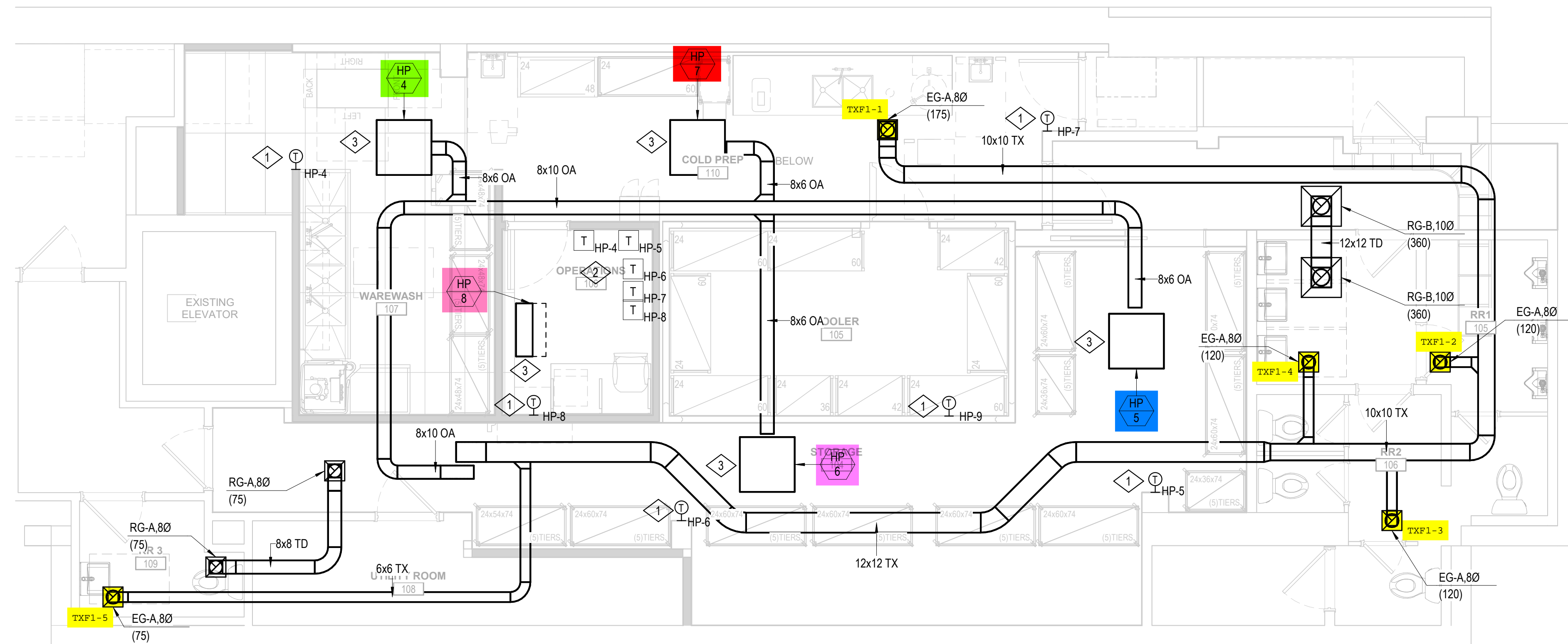


MECHANICAL DUCTWORK NOTES:

1. REFER TO MECHANICAL SPECIFICATIONS FOR VIBRATION ISOLATION REQUIREMENTS.
2. COORDINATE ALL SCOPE OF WORK AND SCHEDULING WITH ALL TRADES AND LANDLORD PRIOR TO CONSTRUCTION.
3. COORDINATE ALL SCOPE AND CONSTRUCTION REQUIREMENTS WITH BUILDING RULES AND REGULATIONS.
4. COORDINATE ALL AIR OUTLET LOCATIONS, THERMOSTATS, TEMPERATURE SENSORS AND ACCESS DOORS WITH ARCHITECT. SUBMIT FOR ARCHITECT AND ENGINEER APPROVAL.
5. REFER TO MECHANICAL SPECIFICATIONS FOR ALL TEMPERATURE CONTROL REQUIREMENTS.
6. REFER TO MECHANICAL SPECIFICATIONS FOR INSULATION REQUIREMENTS.
7. DUCT SIZES INDICATED ON PLAN ARE CLEAR OPEN DIMENSIONS. PROVIDE ACOUSTICAL LINING SHALL BE PROVIDED:
 - 10' DOWNSTREAM OF ALL AC UNITS
 - 10' UPSTREAM AND DOWN STREAM OF ALL EXHAUST FANS
 - ALL RETURN DUCTS, TRANSFER DUCTS AND PLENUMS
8. PROVIDE THE NEXT DIFFUSER NECK SIZE UP FOR ALL OUTLETS INDICATED WITH BLANK-OFFS.
9. REFER TO ARCHITECTURAL PLANS FOR ACOUSTICAL WALL PENETRATION REQUIREMENTS.
10. FLEXIBLE DUCTWORK IS NOT PERMITTED FOR USE WITHIN EXHAUST SYSTEMS.
11. PROVIDE FLEXIBLE CONNECTIONS FOR ALL SHEET METAL CONNECTIONS TO FAN POWERED EQUIPMENT.
12. NO DUCTWORK OR PIPING SHALL BE RUN WITHIN EQUIPMENT REQUIRED ACCESS SPACE. ACCESS SHOWN WITHIN FLOOR PLAN FOR REFERENCE ONLY. COORDINATE WITH EQUIPMENT MANUFACTURER FOR SPECIFIC ACCESS REQUIREMENTS.
13. PROVIDE WIRE MESH SCREEN ON OPEN RETURNS ABOVE CEILING. REFER TO DRAWING FOR DUCT SIZES.
14. ALL CONDENSATE RETURNS AND DRAIN LINES SHALL BE PITCHED FROM POINT OF CONNECTION TO TERMINATION POINT.
15. REFER TO MECHANICAL SPECIFICATIONS FOR MATERIAL AND INSULATION REQUIREMENTS.
16. REFER TO MECHANICAL DETAILS AND SPECIFICATIONS FOR ADDITIONAL PIPING SCOPE.
17. GENERAL NOTES APPLY TO ALL HVAC SHEETS.
18. CONTRACTOR AND SUBCONTRACTORS SHALL REVIEW A COMPLETE SET OF THE CONSTRUCTION DOCUMENTS.
19. COORDINATE WORK WITH THE WORK OF OTHER TRADES, EQUIPMENT FURNISHED BY OTHERS, REQUIREMENTS OF THE OWNER, AND OF THE EXISTING CONDITIONS AT THE PROJECT SITE.
20. DRAWINGS FOR THE MECHANICAL WORK ARE DIAGRAMATIC, SHOWING THE GENERAL LOCATION, TYPE, LAYOUT, AND EQUIPMENT REQUIRED. THE DRAWING SHALL NOT BE SCALED FOR EXACT MEASUREMENTS. REFER TO ARCHITECTURAL DRAWINGS FOR DIMENSIONS. REFER TO MANUFACTURER'S STANDARD INSTALLATION DRAWINGS FOR EQUIPMENT CONNECTIONS AND INSTALLATION REQUIREMENTS. PROVIDE DUCTWORK, CONNECTIONS, OFFSETS, ACCESSORIES, AND MATERIALS NECESSARY FOR A COMPLETE SYSTEM.
21. DUCT DIMENSIONS ON PLAN INDICATE DIMENSIONS OF INTERNAL FREE AREA.
22. PERFORATED CEILING DIFFUSERS SHALL BE 4-WAY UNLESS NOTED OTHERWISE.
23. COORDINATE ROOF WORK WITH THE LANDLORD AND THE OWNER'S CONSTRUCTION MANAGER PRIOR TO CONSTRUCTION. UTILIZE THE LANDLORD'S ROOFING CONTRACTOR AT THE GENERAL CONTRACTOR'S EXPENSE WHEN REQUIRED.
24. UNLESS NOTED OTHERWISE RECTANGULAR DUCT ELBOWS SHALL BE MITERED ELBOWS WITH DOUBLE-THICKNESS TURNING VANES.
25. THE TERM "FURNISH" OR "SUPPLY" MEANS SUPPLY AND DELIVER TO THE PROJECT SITE, READY FOR UNLOADING, UNPACKING, ASSEMBLY, INSTALLATION, AND SIMILAR OPERATIONS. THE TERM "INSTALL" DESCRIBES THE OPERATIONS AT THE PROJECT SITE INCLUDING THE ACTUAL UNLOADING, UNPACKING, ASSEMBLY, ERECTING, PLACING, ANCHORING, APPLYING, WORKING TO DIMENSION, FINISHING, CURING, PROTECTING, CLEANING, AND SIMILAR OPERATIONS. THE TERM "PRVIDE" MEANS TO FURNISH AND INSTALL, COMPLETE AND READY FOR THE INTENDED USE.
26. A FINAL REPORT FOR THE TESTING AND ADJUSTMENTS OF ALL NEW SYSTEMS FROM ALL DISCIPLINES SHALL BE COMPLETED WITH FINAL APPROVAL BY THE FIELD INSPECTOR. THIS REPORT SHALL BE SIGNED BY THE INDIVIDUAL RESPONSIBLE FOR PERFORMING THESE SERVICES.
27. TESTING AND BALANCING OF THE MECHANICAL SYSTEMS TO BE COMPLETED BY NATIONAL TAB AT THE GENERAL CONTRACTOR'S EXPENSE. THE CONTRACTOR SHALL CONTRACT WITH , SCHEDULE AND SUPERVISE/ASSIST NATIONAL TAB AS REQUIRED. REFER TO THE COVER SHEET, OR CONTACT SWEETGREEN'S CONSTRUCTION MANAGER FOR CONTACT INFORMATION.
28. ALL DUCT AND OTHER RELATED AIR DISTRIBUTION COMPONENT OPENINGS SHALL BE COVERED WITH TAPE, PLASTIC, OR SHEET METAL UNTIL THE FINAL START UP OF THE HEATING, COOLING AND VENTILATION EQUIPMENT.
29. PROVIDE LABELING FOR ALL HVAC EQUIPMENT USING ENGRAVED PHENOLIC PLATES OR AS REQUIRED BY THE LANDLORD.

MECHANICAL KEY NOTES:

1. PROVIDE BUTTON STYLE TEMPERATURE SENSOR WIRED TO ASSOCIATED AC UNIT AND THERMOSTAT. COORDINATE SENSOR AND THERMOSTAT COMPATIBILITIES WITH UNIT MANUFACTURER.
2. PROVIDE HONEYWELL TH8321R1001 THERMOSTATS WITH LOCKABLE COVERS (HONEYWELL CG511A1000 OR EQUAL) FOR THE MECHANICAL EQUIPMENT AT THIS LOCATION AT 48" AFF. COORDINATE WITH ELECTRICAL SWITCHING IN THE AREA AND EXTEND WIRING TO REMOTE TEMPERATURE SENSOR AND UNITS. LABEL EACH THERMOSTAT ACCORDINGLY. COORDINATE THERMOSTAT LOCATION WITH WALL-MOUNTED EQUIPMENT SO THAT THE THERMOSTATS ARE NOT BLOCKED BY SHELVING, COAT RACKS OR DOORS.
3. INSTALL EQUIPMENT PER MANUFACTURER'S INSTALLATION INSTRUCTION AND PER THE STRUCTURAL DETAILS.



1 CELLAR
1/4" = 1'-0"



sweetgreen

3102 WEST 36TH STREET
LOS ANGELES, CALIFORNIA 90018

THESE DRAWINGS & SPECIFICATIONS ARE CONFIDENTIAL AND SHALL REMAIN THE SOLE PROPERTY OF SWEETGREEN CORPORATION. THEY SHALL NOT BE REPRODUCED (IN WHOLE OR IN PART), SHARED WITH THIRD PARTIES OR USED IN ANY MANNER ON OTHER PROJECTS OR EXTENSIONS TO THIS PROJECT WITHOUT THE PRIOR WRITTEN CONSENT OF SWEETGREEN CORPORATION. THESE DRAWINGS & SPECIFICATIONS ARE INTENDED TO EXPRESS DESIGN INTENT FOR A PROTOTYPICAL SWEETGREEN STORE WHICH IS SUBJECT TO CHANGE AT ANY TIME AND MAY NOT REFLECT ACTUAL SITE CONDITIONS. NEITHER PARTY SHALL HAVE ANY OBLIGATION OR LIABILITY TO THE OTHER (EXCEPT AS STATED ABOVE) UNTIL A WRITTEN AGREEMENT IS FULLY EXECUTED.

ENGINEER OF RECORD:

MEYERS+
ENGINEERS

275 Madison Avenue, Suite 1200 332.240.0500
New York, NY 10016 meyersplus.com

STAMP:

01/28/2025

PROJECT INFORMATION:
LOWER EAST SIDE

PROJECT INFORMATION:
**167 ORCHARD STREET
MANHATTAN, NY 10002**

DRAWN BY: Author
CHECKED BY: Checker
PROJECT MANAGER:
SG DESIGN MANAGER:
SG CONSTR. MANAGER:
PROJECT NO: 24.20093.000
TEMPLATE VERSION: 04.28.2023

REV.	DATE	DESCRIPTION
01/27/2025	80% SUBMISSION	
02/18/2025	100% SUBMISSION	

**MECHANICAL
CELLAR
DUCTWORK PLAN**

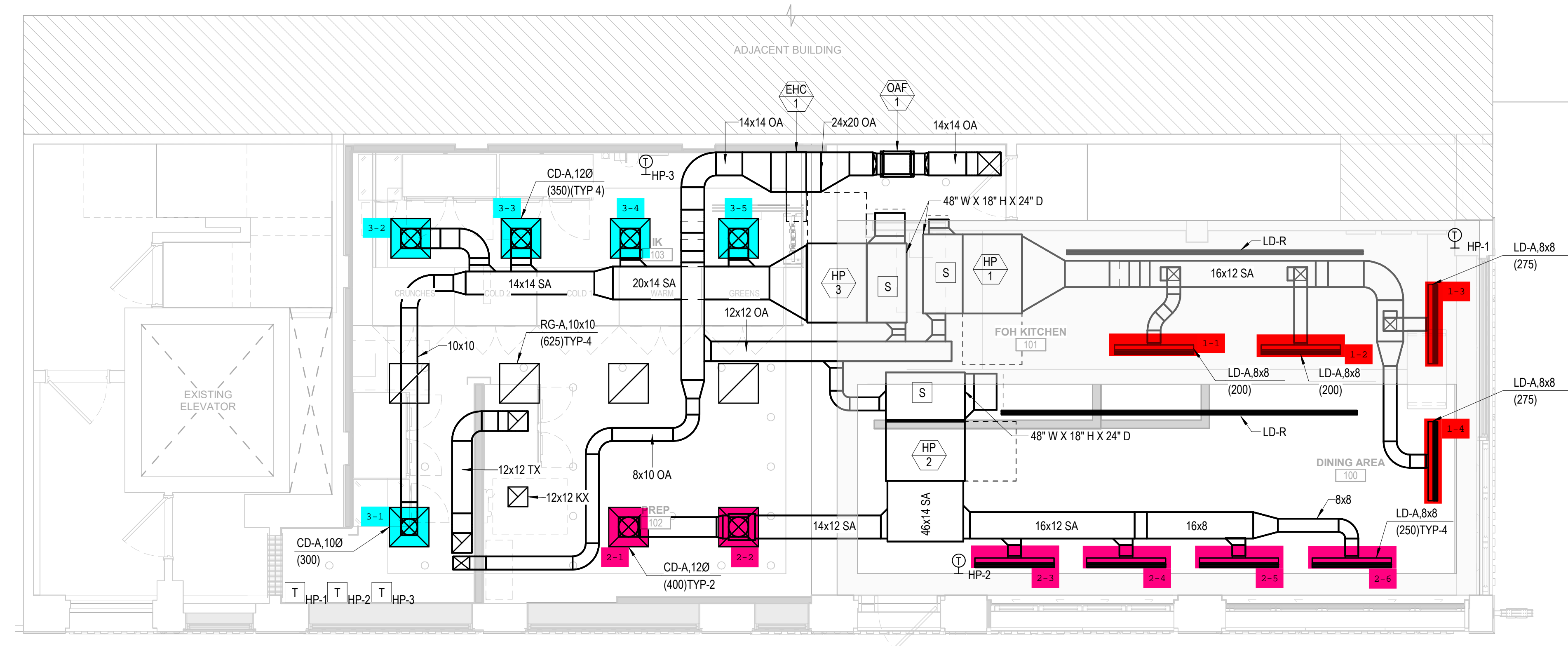
M-131.00
SHEET 7 of 12

MECHANICAL DUCTWORK NOTES:

1. REFER TO MECHANICAL SPECIFICATIONS FOR VIBRATION ISOLATION REQUIREMENTS.
2. COORDINATE ALL SCOPE OF WORK AND SCHEDULING WITH ALL TRADES AND LANDLORD PRIOR TO CONSTRUCTION.
3. COORDINATE ALL SCOPE AND CONSTRUCTION REQUIREMENTS WITH BUILDING RULES AND REGULATIONS.
4. COORDINATE ALL AIR OUTLET LOCATIONS, THERMOSTATS, TEMPERATURE SENSORS AND ACCESS DOORS WITH ARCHITECT. SUBMIT FOR ARCHITECT AND ENGINEER APPROVAL.
5. REFER TO MECHANICAL SPECIFICATIONS FOR ALL TEMPERATURE CONTROL REQUIREMENTS.
6. REFER TO MECHANICAL SPECIFICATIONS FOR INSULATION REQUIREMENTS.
7. DUCT SIZES INDICATED ON PLAN ARE CLEAR OPEN DIMENSIONS. PROVIDE ACOUSTICAL LINING SHALL BE PROVIDED:
 - 10' DOWNSTREAM OF ALL AC UNITS
 - 10' UPSTREAM AND DOWN STREAM OF ALL EXHAUST FANS
 - ALL RETURN DUCTS, TRANSFER DUCTS AND PLENUMS
8. PROVIDE THE NEXT DIFFUSER NECK SIZE UP FOR ALL OUTLETS INDICATED WITH BLANK-OFFS.
9. REFER TO ARCHITECTURAL PLANS FOR ACOUSTICAL WALL PENETRATION REQUIREMENTS.
10. FLEXIBLE DUCTWORK IS NOT PERMITTED FOR USE WITHIN EXHAUST SYSTEMS.
11. PROVIDE FLEXIBLE CONNECTIONS FOR ALL SHEET METAL CONNECTIONS TO FAN POWERED EQUIPMENT.
12. NO DUCTWORK OR PIPING SHALL BE RUN WITHIN EQUIPMENT REQUIRED ACCESS SPACE. ACCESS SHOWN WITHIN FLOOR PLAN FOR REFERENCE ONLY. COORDINATE WITH EQUIPMENT MANUFACTURER FOR SPECIFIC ACCESS REQUIREMENTS.
13. PROVIDE WIRE MESH SCREEN ON OPEN RETURNS ABOVE CEILING. REFER TO DRAWING FOR DUCT SIZES.
14. ALL CONDENSATE RETURNS AND DRAIN LINES SHALL BE PITCHED FROM POINT OF CONNECTION TO TERMINATION POINT.
15. REFER TO MECHANICAL SPECIFICATIONS FOR MATERIAL AND INSULATION REQUIREMENTS.
16. REFER TO MECHANICAL DETAILS AND SPECIFICATIONS FOR ADDITIONAL PIPING SCOPE.
17. GENERAL NOTES APPLY TO ALL HVAC SHEETS.
18. CONTRACTOR AND SUBCONTRACTORS SHALL REVIEW A COMPLETE SET OF THE CONSTRUCTION DOCUMENTS.
19. COORDINATE WORK WITH THE WORK OF OTHER TRADES, EQUIPMENT FURNISHED BY OTHERS, REQUIREMENTS OF THE OWNER, AND OF THE EXISTING CONDITIONS AT THE PROJECT SITE.
20. DRAWINGS FOR THE MECHANICAL WORK ARE DIAGRAMATIC, SHOWING THE GENERAL LOCATION, TYPE, LAYOUT, AND EQUIPMENT REQUIRED. THE DRAWING SHALL NOT BE SCALED FOR EXACT MEASUREMENTS. REFER TO ARCHITECTURAL DRAWINGS FOR DIMENSIONS. REFER TO MANUFACTURER'S STANDARD INSTALLATION DRAWINGS FOR EQUIPMENT CONNECTIONS AND INSTALLATION REQUIREMENTS. PROVIDE DUCTWORK, CONNECTIONS, OFFSETS, ACCESSORIES, AND MATERIALS NECESSARY FOR A COMPLETE SYSTEM.
21. DUCT DIMENSIONS ON PLAN INDICATE DIMENSIONS OF INTERNAL FREE AREA.
22. PERFORATED CEILING DIFFUSERS SHALL BE 4-WAY UNLESS NOTED OTHERWISE.
23. COORDINATE ROOF WORK WITH THE LANDLORD AND THE OWNER'S CONSTRUCTION MANAGER PRIOR TO CONSTRUCTION. UTILIZE THE LANDLORD'S ROOFING CONTRACTOR AT THE GENERAL CONTRACTOR'S EXPENSE WHEN REQUIRED.
24. UNLESS NOTED OTHERWISE RECTANGULAR DUCT ELBOWS SHALL BE MITERED ELBOWS WITH DOUBLE-THICKNESS TURNING VANES.
25. THE TERM "FURNISH" OR "SUPPLY" MEANS SUPPLY AND DELIVER TO THE PROJECT SITE, READY FOR UNLOADING, UNPACKING, ASSEMBLY, INSTALLATION, AND SIMILAR OPERATIONS. THE TERM "INSTALL" DESCRIBES THE OPERATIONS AT THE PROJECT SITE INCLUDING THE ACTUAL UNLOADING, UNPACKING, ASSEMBLY, ERECTING, PLACING, ANCHORING, APPLYING, WORKING TO DIMENSION, FINISHING, CURING, PROTECTING, CLEANING, AND SIMILAR OPERATIONS. THE TERM "PRVIDE" MEANS TO FURNISH AND INSTALL, COMPLETE AND READY FOR THE INTENDED USE.
26. A FINAL REPORT FOR THE TESTING AND ADJUSTMENTS OF ALL NEW SYSTEMS FROM ALL DISCIPLINES SHALL BE COMPLETED WITH FINAL APPROVAL BY THE FIELD INSPECTOR. THIS REPORT SHALL BE SIGNED BY THE INDIVIDUAL RESPONSIBLE FOR PERFORMING THESE SERVICES.
27. TESTING AND BALANCING OF THE MECHANICAL SYSTEMS TO BE COMPLETED BY NATIONAL TAB AT THE GENERAL CONTRACTOR'S EXPENSE. THE CONTRACTOR SHALL CONTRACT WITH , SCHEDULE AND SUPERVISE/ASSIST NATIONAL TAB AS REQUIRED. REFER TO THE COVER SHEET, OR CONTACT SWEETGREEN'S CONSTRUCTION MANAGER FOR CONTACT INFORMATION.
28. ALL DUCT AND OTHER RELATED AIR DISTRIBUTION COMPONENT OPENINGS SHALL BE COVERED WITH TAPE, PLASTIC, OR SHEET METAL UNTIL THE FINAL START UP OF THE HEATING, COOLING AND VENTILATION EQUIPMENT.
29. PROVIDE LABELING FOR ALL HVAC EQUIPMENT USING ENGRAVED PHENOLIC PLATES OR AS REQUIRED BY THE LANDLORD.

MECHANICAL KEY NOTES:

1. PROVIDE BUTTON STYLE TEMPERATURE SENSOR WIRED TO ASSOCIATED AC UNIT AND THERMOSTAT. COORDINATE SENSOR AND THERMOSTAT COMPATIBILITIES WITH UNIT MANUFACTURER.
2. PROVIDE HONEYWELL TH8321R1001 THERMOSTATS WITH LOCKABLE COVERS (HONEYWELL CG511A1000 OR EQUAL) FOR THE MECHANICAL EQUIPMENT AT THIS LOCATION AT 48" AFF. COORDINATE WITH ELECTRICAL SWITCHING IN THE AREA AND EXTEND WIRING TO REMOTE TEMPERATURE SENSOR AND UNITS. LABEL EACH THERMOSTAT ACCORDINGLY. COORDINATE THERMOSTAT LOCATION WITH WALL-MOUNTED EQUIPMENT SO THAT THE THERMOSTATS ARE NOT BLOCKED BY SHELVING, COAT RACKS OR DOORS.
3. INSTALL EQUIPMENT PER MANUFACTURER'S INSTALLATION INSTRUCTION AND PER THE STRUCTURAL DETAILS.

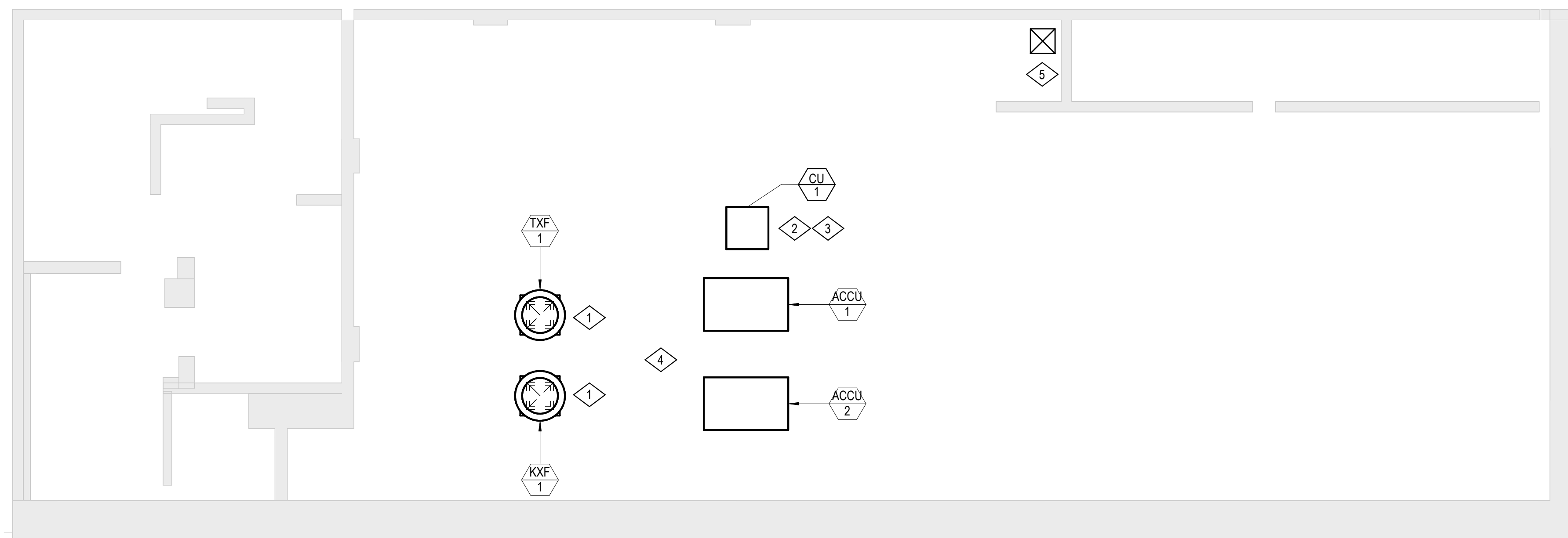


MECHANICAL DUCTWORK NOTES:

1. REFER TO MECHANICAL SPECIFICATIONS FOR VIBRATION ISOLATION REQUIREMENTS.
2. COORDINATE ALL SCOPE OF WORK AND SCHEDULING WITH ALL TRADES AND LANDLORD PRIOR TO CONSTRUCTION.
3. COORDINATE ALL SCOPE AND CONSTRUCTION REQUIREMENTS WITH BUILDING RULES AND REGULATIONS.
4. COORDINATE ALL AIR OUTLET LOCATIONS, THERMOSTATS, TEMPERATURE SENSORS AND ACCESS DOORS WITH ARCHITECT. SUBMIT FOR ARCHITECT AND ENGINEER APPROVAL.
5. REFER TO MECHANICAL SPECIFICATIONS FOR ALL TEMPERATURE CONTROL REQUIREMENTS.
6. REFER TO MECHANICAL SPECIFICATIONS FOR INSULATION REQUIREMENTS.
7. DUCT SIZES INDICATED ON PLAN ARE CLEAR OPEN DIMENSIONS. PROVIDE ACOUSTICAL LINING SHALL BE PROVIDED:
 - 10' DOWNSTREAM OF ALL AC UNITS
 - 10' UPSTREAM AND DOWN STREAM OF ALL EXHAUST FANS
 - ALL RETURN DUCTS, TRANSFER DUCTS AND PLENUMS
8. FLEXIBLE DUCTWORK IS NOT PERMITTED FOR USE WITHIN EXHAUST SYSTEMS.
9. PROVIDE FLEXIBLE CONNECTIONS FOR ALL SHEET METAL CONNECTIONS TO FAN POWERED EQUIPMENT.
10. NO DUCTWORK OR PIPING SHALL BE RUN WITHIN EQUIPMENT REQUIRED ACCESS SPACE. ACCESS SHOWN WITHIN FLOOR PLAN FOR REFERENCE ONLY. COORDINATE WITH EQUIPMENT MANUFACTURER FOR SPECIFIC ACCESS REQUIREMENTS.
11. REFER TO MECHANICAL SPECIFICATIONS FOR MATERIAL AND INSULATION REQUIREMENTS.
12. REFER TO MECHANICAL DETAILS AND SPECIFICATIONS FOR ADDITIONAL PIPING SCOPE.
13. GENERAL NOTES APPLY TO ALL HVAC SHEETS.
14. CONTRACTOR AND SUBCONTRACTORS SHALL REVIEW A COMPLETE SET OF THE CONSTRUCTION DOCUMENTS.
15. COORDINATE WORK WITH THE WORK OF OTHER TRADES, EQUIPMENT FURNISHED BY OTHERS, REQUIREMENTS OF THE OWNER, AND OF THE EXISTING CONDITIONS AT THE PROJECT SITE.
16. DRAWINGS FOR THE MECHANICAL WORK ARE DIAGRAMATIC, SHOWING THE GENERAL LOCATION, TYPE, LAYOUT, AND EQUIPMENT REQUIRED. THE DRAWING SHALL NOT BE SCALED FOR EXACT MEASUREMENTS. REFER TO ARCHITECTURAL DRAWINGS FOR DIMENSIONS. REFER TO MANUFACTURER'S STANDARD INSTALLATION DRAWINGS FOR EQUIPMENT CONNECTIONS AND INSTALLATION REQUIREMENTS. PROVIDE DUCTWORK, CONNECTIONS, OFFSETS, ACCESSORIES, AND MATERIALS NECESSARY FOR A COMPLETE SYSTEM.
17. DUCT DIMENSIONS ON PLAN INDICATE DIMENSIONS OF INTERNAL FREE AREA.
18. COORDINATE ROOF WORK WITH THE LANDLORD AND THE OWNER'S CONSTRUCTION MANAGER PRIOR TO CONSTRUCTION. UTILIZE THE LANDLORD'S ROOFING CONTRACTOR AT THE GENERAL CONTRACTOR'S EXPENSE WHEN REQUIRED.
19. UNLESS NOTED OTHERWISE RECTANGULAR DUCT ELBOWS SHALL BE MITERED ELBOWS WITH DOUBLE-THICKNESS TURNING VANES.
20. THE TERM "FURNISH" OR "SUPPLY" MEANS SUPPLY AND DELIVER TO THE PROJECT SITE, READY FOR UNLOADING, UNPACKING, ASSEMBLY, INSTALLATION, AND SIMILAR OPERATIONS. THE TERM "INSTALL" DESCRIBES THE OPERATIONS AT THE PROJECT SITE INCLUDING THE ACTUAL UNLOADING, UNPACKING, ASSEMBLY, ERECTING, PLACING, ANCHORING, APPLYING, WORKING TO DIMENSION, FINISHING, CURING, PROTECTING, CLEANING, AND SIMILAR OPERATIONS. THE TERM "PRVIDE" MEANS TO FURNISH AND INSTALL, COMPLETE AND READY FOR THE INTENDED USE.
21. A FINAL REPORT FOR THE TESTING AND ADJUSTMENTS OF ALL NEW SYSTEMS FROM ALL DISCIPLINES SHALL BE COMPLETED WITH FINAL APPROVAL BY THE FIELD INSPECTOR. THIS REPORT SHALL BE SIGNED BY THE INDIVIDUAL RESPONSIBLE FOR PERFORMING THESE SERVICES.
22. TESTING AND BALANCING OF THE MECHANICAL SYSTEMS TO BE COMPLETED BY NATIONAL TAB AT THE GENERAL CONTRACTOR'S EXPENSE. THE CONTRACTOR SHALL CONTRACT WITH, SCHEDULE AND SUPERVISE/ASSIST NATIONAL TAB AS REQUIRED. REFER TO THE COVER SHEET, OR CONTACT SWEETGREEN'S CONSTRUCTION MANAGER FOR CONTACT INFORMATION.
23. ALL DUCT AND OTHER RELATED AIR DISTRIBUTION COMPONENT OPENINGS SHALL BE COVERED WITH TAPE, PLASTIC, OR SHEET METAL UNTIL THE FINAL START UP OF THE HEATING, COOLING AND VENTILATION EQUIPMENT.
24. PROVIDE LABELING FOR ALL HVAC EQUIPMENT USING ENGRAVED PHENOLIC PLATES OR AS REQUIRED BY THE LANDLORD.

MECHANICAL KEY NOTES:

1. EXHAUST FAN TO BE TIED INTO AC UNIT PROGRAMMABLE THERMOSTAT. IF THERMOSTAT IS NOT COMPATIBLE FOR EXTERNAL EQUIPMENT TIE-IN, PROVIDE TIME CLOCK. COORDINATE TIME CLOCK LOCATION AND SCHEDULING REQUIREMENTS WITH OWNERSHIP.
2. COORDINATE CONDENSER MOUNTING REQUIREMENTS WITH LANDLORD REQUIREMENTS PRIOR TO PROCUREMENT.
3. PROVIDE REFRIGERANT PIPING FROM OUTDOOR UNIT TO ASSOCIATED INDOOR UNIT. INDICATED SIZING AND ROUTING ARE FOR REFERENCE ONLY. COORDINATE FIELD CONDITION WITH ROUTING TO ROUTE, SIZE, AND CONSTRUCT REFRIGERANT PIPING PER MANUFACTURER REQUIREMENTS. SUBMIT INFORMATION TO MANUFACTURER FOR FINAL REVIEW.
4. ALL ROOFING SCOPE SHALL BE COORDINATED WITH LANDLORD PRIOR TO INSTALLATION. ROOF SCOPE SHALL BE PERFORMED BY THE BASE BUILDING APPROVED ROOFING VENDOR.
5. OUTSIDE AIR DUCT TO PENETRATE ROOF AND TERMINATE WITH GOOSENECK AND WIRE MESH SCREEN.



1 ROOF
1/4" = 1'-0"



sweetgreen

3102 WEST 36TH STREET
LOS ANGELES, CALIFORNIA 90018

THESE DRAWINGS & SPECIFICATIONS ARE CONFIDENTIAL AND SHALL REMAIN THE SOLE PROPERTY OF SWEETGREEN CORPORATION. THEY SHALL NOT BE REPRODUCED (IN WHOLE OR IN PART), SHARED WITH THIRD PARTIES OR USED IN ANY MANNER ON OTHER PROJECTS OR EXTENSIONS TO THIS PROJECT WITHOUT THE PRIOR WRITTEN CONSENT OF SWEETGREEN CORPORATION. THESE DRAWINGS & SPECIFICATIONS ARE INTENDED TO EXPRESS DESIGN INTENT FOR A PROTOTYPICAL SWEETGREEN STORE WHICH IS SUBJECT TO CHANGE AT ANY TIME AND MAY NOT REFLECT ACTUAL SITE CONDITIONS. NEITHER PARTY SHALL HAVE ANY OBLIGATION OR LIABILITY TO THE OTHER (EXCEPT AS STATED ABOVE) UNTIL A WRITTEN AGREEMENT IS FULLY EXECUTED.

ENGINEER OF RECORD:

MEYERS+
ENGINEERS

275 Madison Avenue, Suite 1200 332.240.0500
New York, NY 10016 meyersplus.com

STAMP:

01/28/2025

PROJECT INFORMATION:
LOWER EAST SIDE

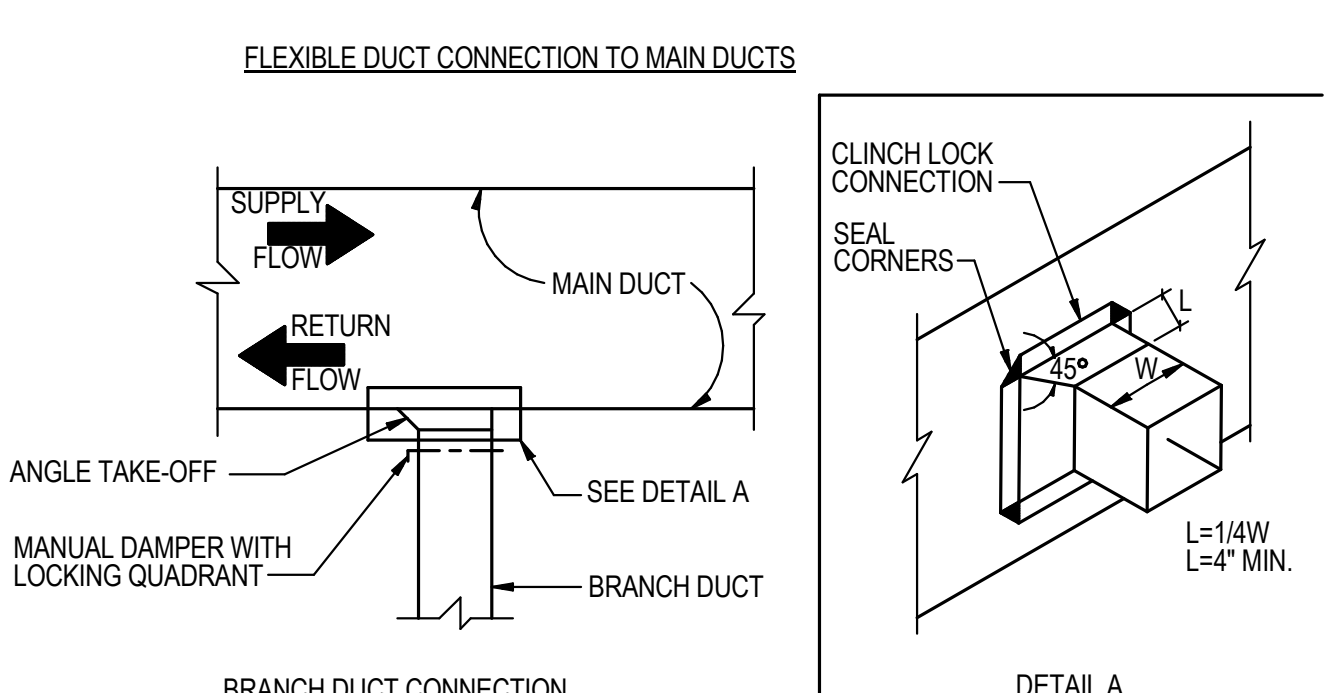
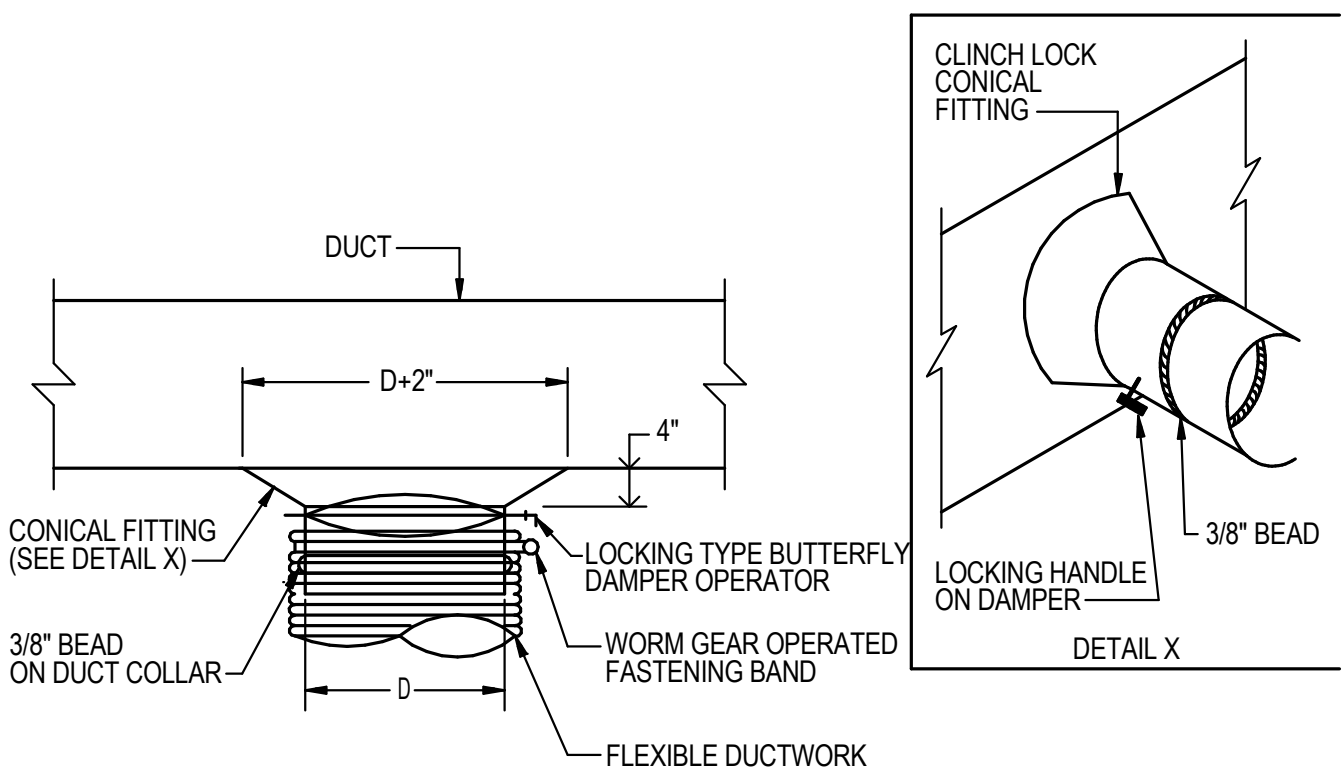
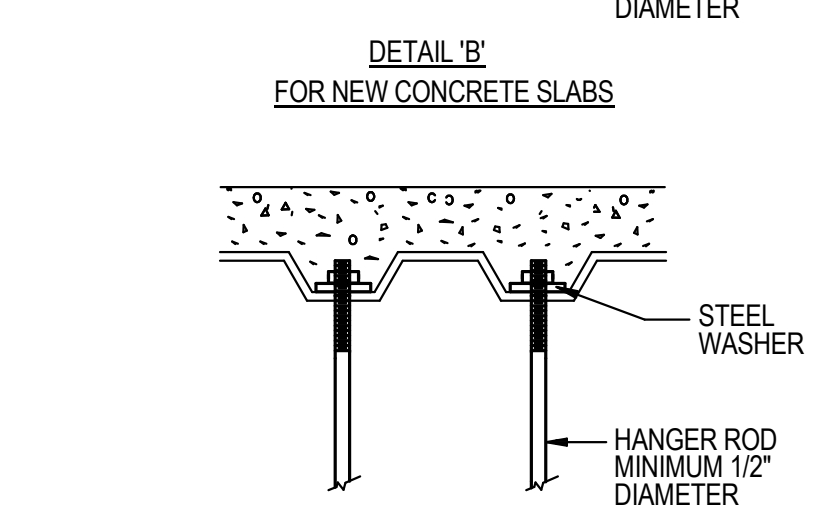
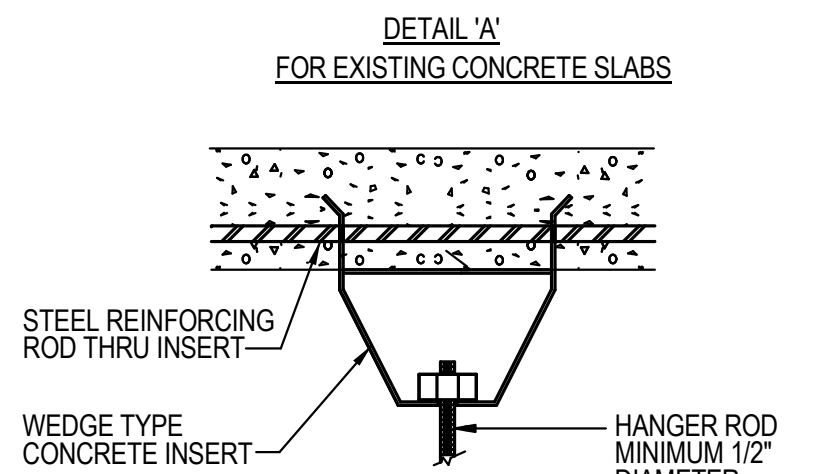
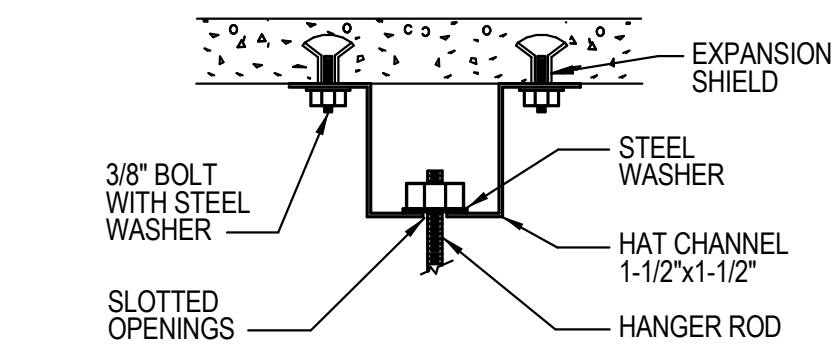
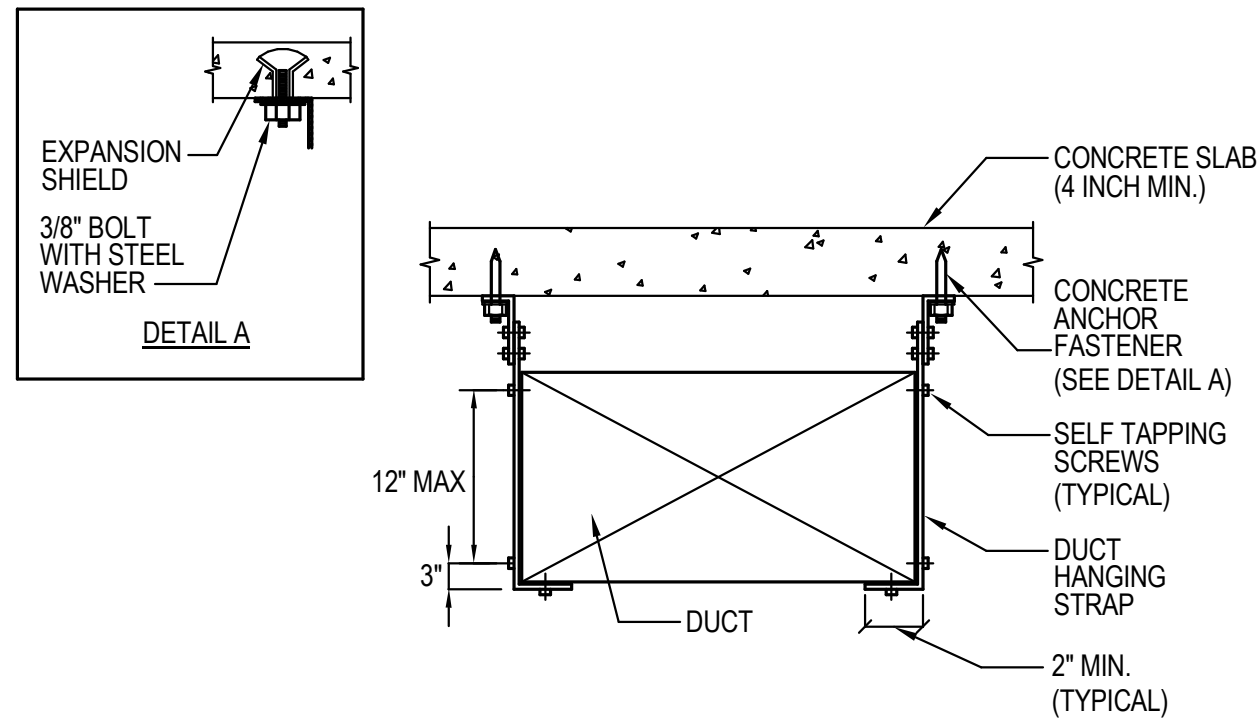
PROJECT INFORMATION:
**167 ORCHARD STREET
MANHATTAN, NY 10002**

DRAWN BY: Author
CHECKED BY: Checker
PROJECT MANAGER:
SG DESIGN MANAGER:
SG CONSTR. MANAGER:
PROJECT NO: 24.20093.000
TEMPLATE VERSION: 04.28.2023

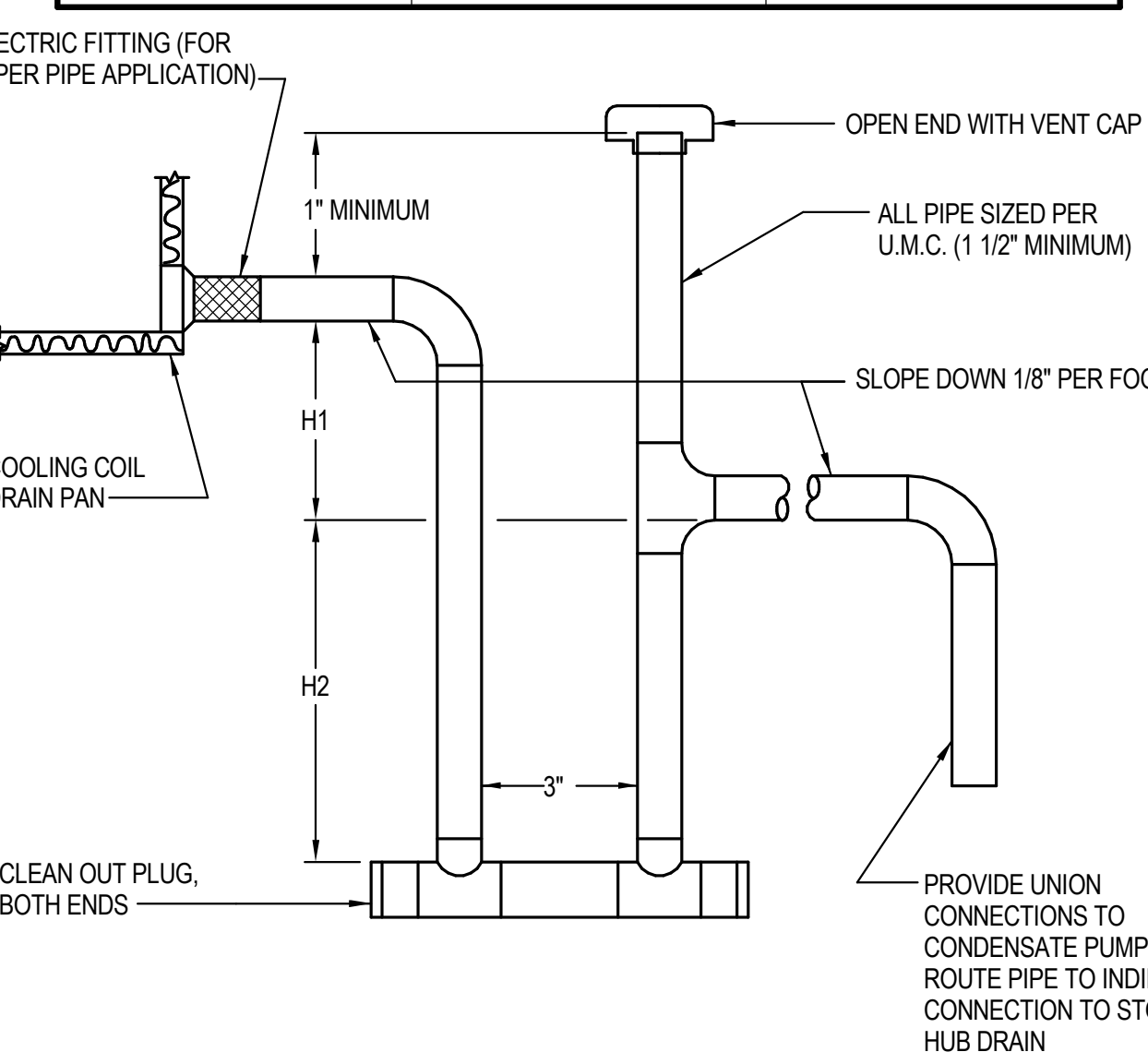
REV.	DATE	DESCRIPTION
	01/27/2025	80% SUBMISSION
	02/18/2025	100% SUBMISSION

**MECHANICAL ROOF
DUCTWORK PLAN**

M-133.00
SHEET 7 of 12



COIL TYPE	H1 (HEIGHT)	H2 (HEIGHT)
BLOW-THROUGH (LOCATED ON DISCHARGE SIDE OF FAN)	1" MINIMUM	POSITIVE STATIC PRESSURE AT DRAIN PAN IN INCHES TIMES 2 (2" MINIMUM)
DRAW-THROUGH (LOCATED ON SUCTION SIDE OF FAN)	NEGATIVE STATIC PRESSURE AT DRAIN PAN IN INCHES PLUS 1"	NEGATIVE STATIC PRESSURE AT DRAIN PAN IN INCHES PLUS 1"



NOTES FOR DUCT HANGING DETAILS:

- DUCT SHALL BE SUSPENDED WITH GALVANIZED BAND IRON STRAPS SECURELY FASTENED TO THE BOTTOM AND SIDE OF THE DUCT. STRAPS TO BE SIZED IN ACCORDANCE WITH THE SMACNA TABLE 4-1 OR ACCORDING TO LOCAL CODES, WHICHEVER IS MORE STRINGENT.

CROSS SECTIONAL AREA (SQ. FT.)	MAX. HANGER SPACING (FT.)
UP TO 4	8
OVER 4 NOT TO EXCEED 10	6
OVER 10	4

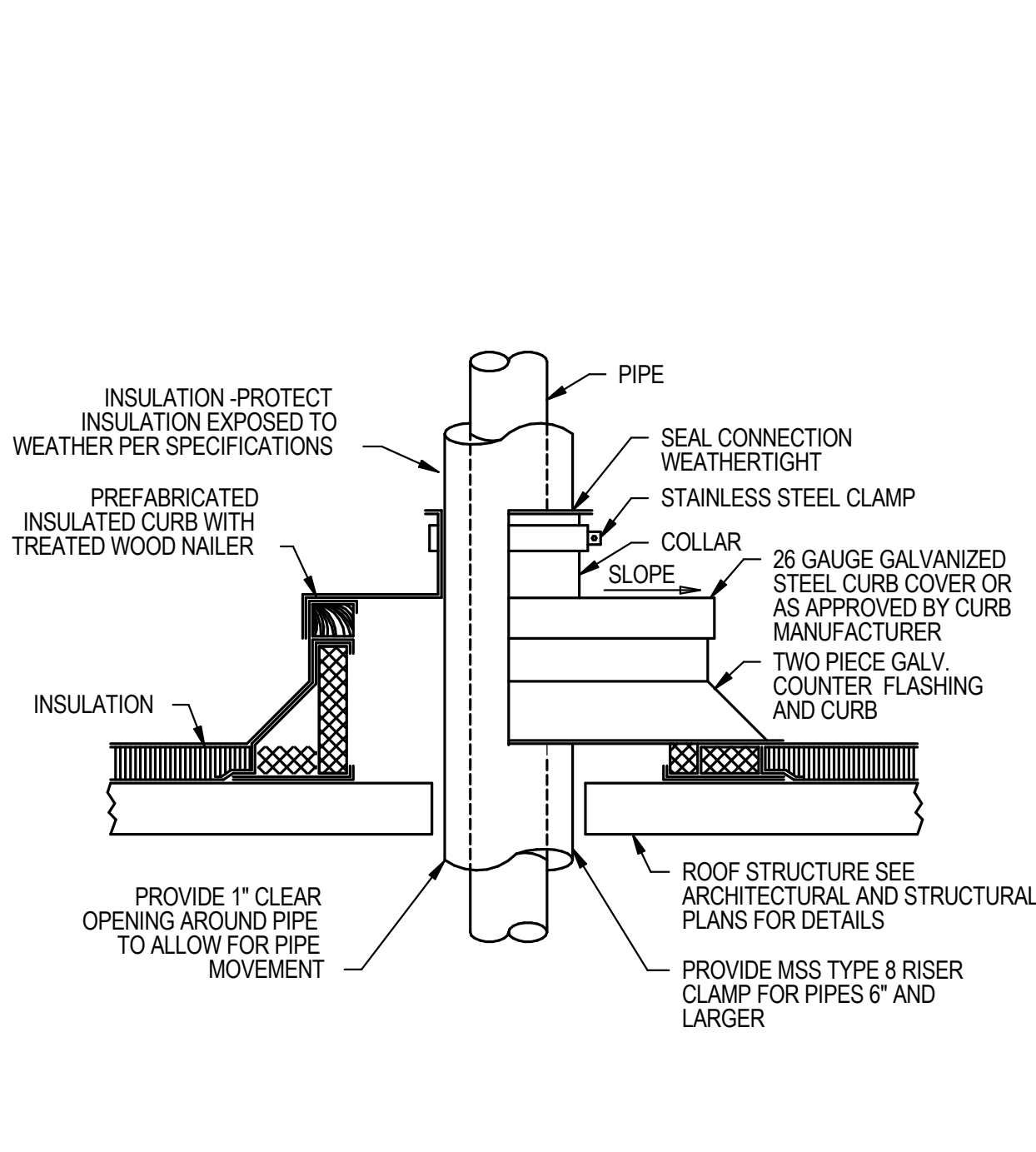
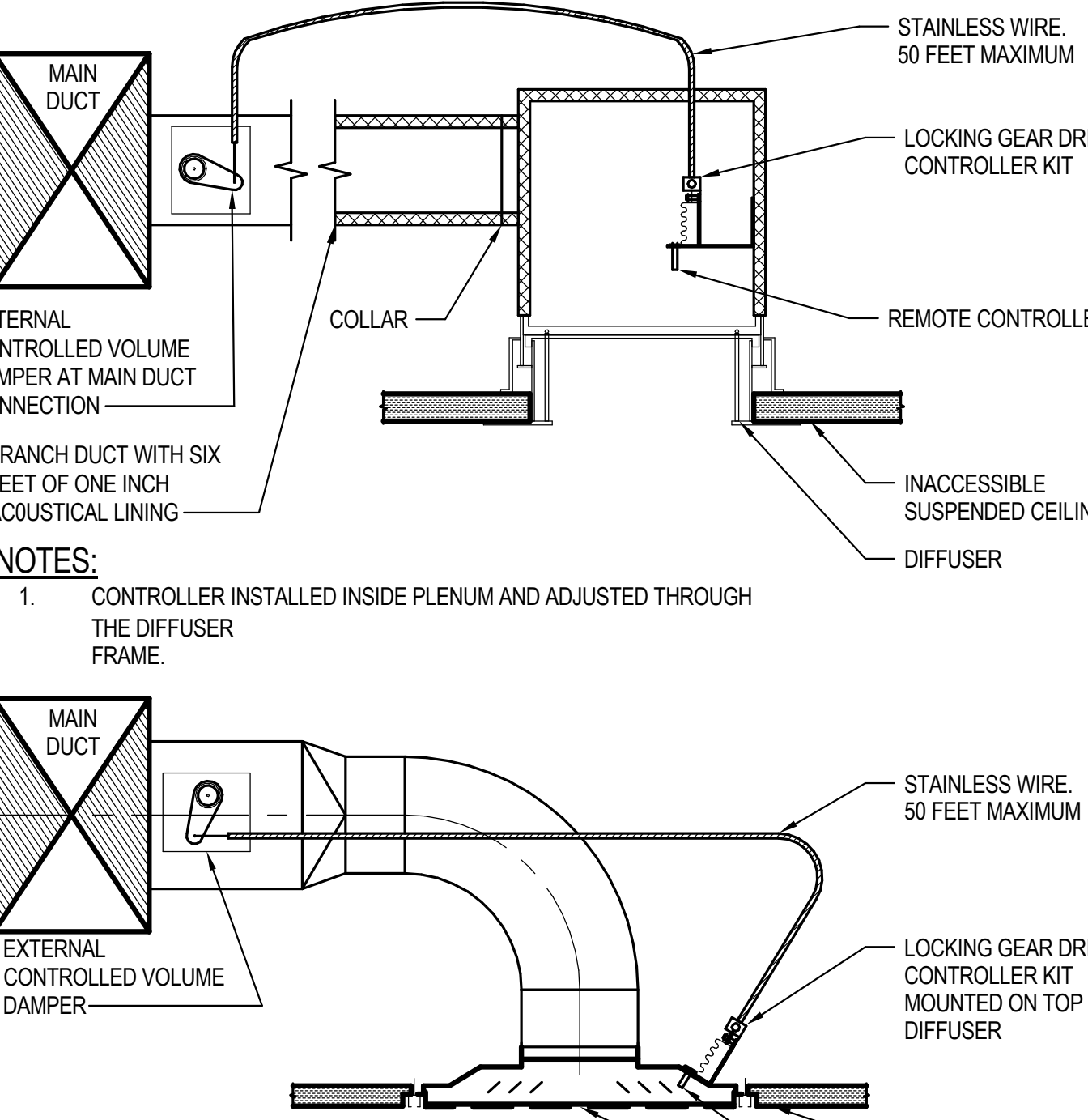
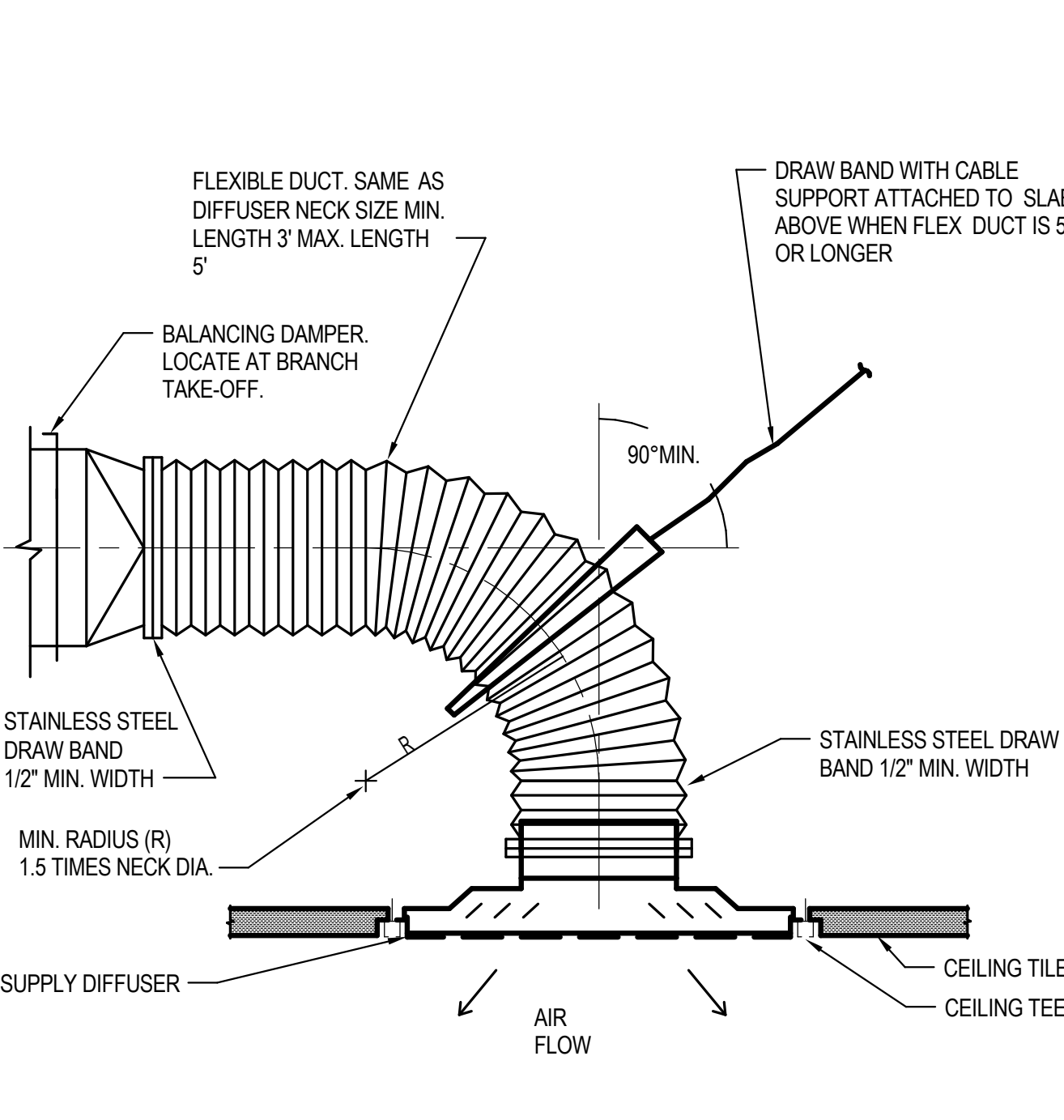
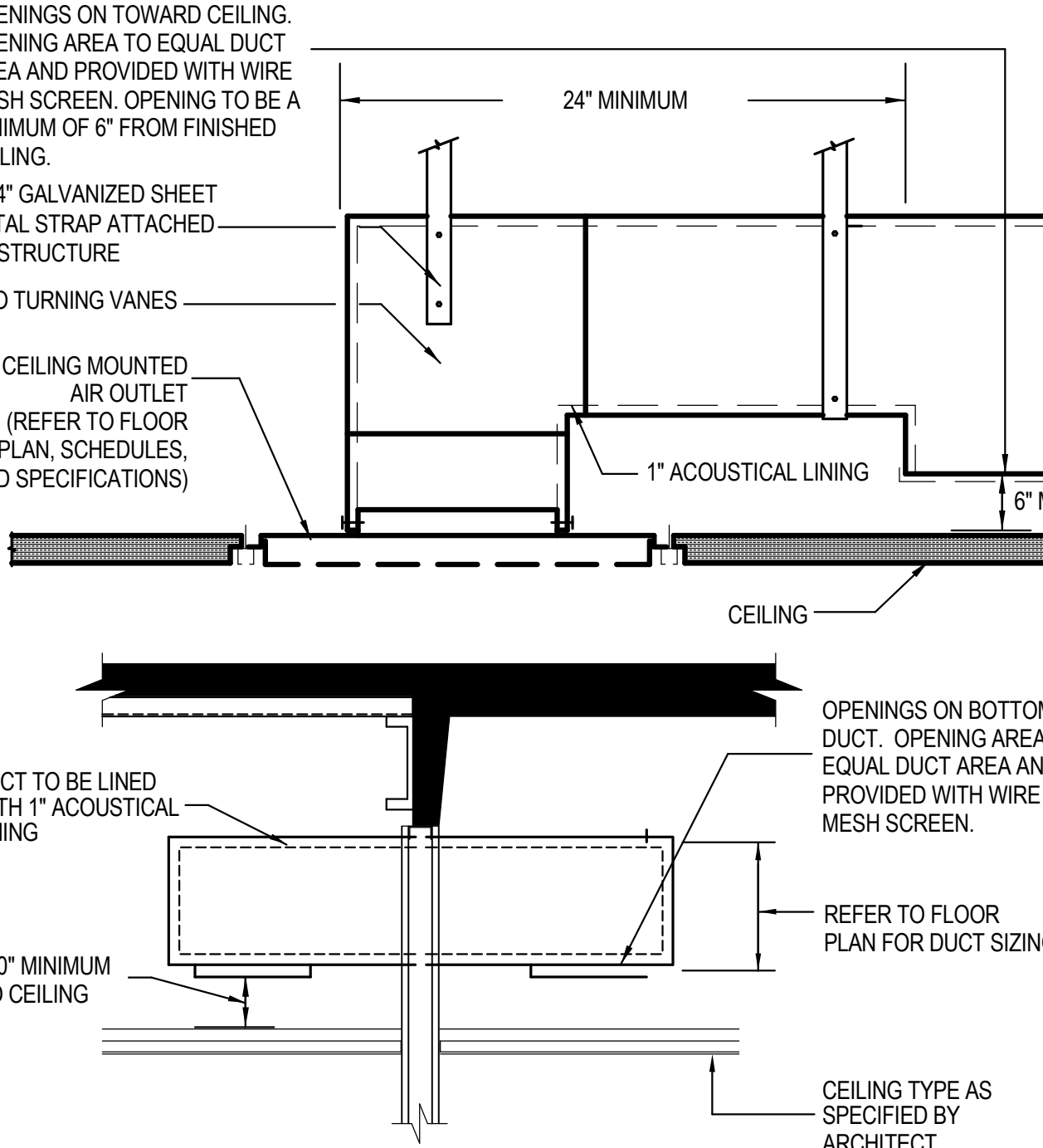
- DUCTS WIDER THAN 60 INCHES TO BE SUPPORTED BY TRAPEZOIDAL ANGLES IN ACCORDANCE WITH SMACNA TABLE 4-3.

1 DUCT HANGING DETAIL FOR EXISTING SLAB
SCALE: NTS

2 STRUCTURE ATTACHMENTS
SCALE: NTS

3 LOW PRESSURE BRANCH DUCT CONNECTIONS
SCALE: NTS

4 COOLING COIL CONDENSATE TRAP
SCALE: NTS



NOTES FOR TRANSFER AIR DUCT ASSEMBLY:

- FOR TRANSFER DUCTS NOT CONNECTED TO CEILING OUTLETS PROVIDE AN DOWNTURN 90 DEGREE ELBOW AT EACH END OF THE DUCT. ELBOW TERMINATION ELEVATIONS SHALL BE COORDINATED WITH ALL OBSTRUCTIONS TO PROVIDE EQUIVALENT OPEN FREE AREA OF TRANSFER DUCT OPENING
- TRANSFER OPENINGS ABOVE CONCEALED CEILINGS ARE TO BE PROVIDED WITH WIRE MESH SCREENS.

5 TRANSFER AIR DUCT ASSEMBLIES
SCALE: NTS

6 SUPPLY DIFFUSER CONNECTION DETAIL
SCALE: NTS

7 REMOTE CABLE DAMPER CONTROLLER
SCALE: NTS

8 PIPE ROOF PENETRATION DETAIL
SCALE: NTS



sweetgreen

3102 WEST 36TH STREET
LOS ANGELES, CALIFORNIA 90018

THESE DRAWINGS & SPECIFICATIONS ARE CONFIDENTIAL AND SHALL REMAIN THE SOLE PROPERTY OF SWEETGREEN CORPORATION. THEY SHALL NOT BE REPRODUCED IN WHOLE OR IN PART, SHARED WITH THIRD PARTIES OR USED IN ANY MANNER ON OTHER PROJECTS OR EXTENSIONS TO THIS PROJECT WITHOUT THE PRIOR WRITTEN CONSENT OF SWEETGREEN CORPORATION. THESE DRAWINGS & SPECIFICATIONS ARE INTENDED TO EXPRESS DESIGN INTENT FOR A PROTOTYPICAL SWEETGREEN STORE WHICH IS SUBJECT TO CHANGE AT ANY TIME AND MAY NOT REFLECT ACTUAL SITE CONDITIONS. NEITHER PARTY SHALL HAVE ANY OBLIGATION OR LIABILITY TO THE OTHER (EXCEPT AS STATED ABOVE) UNTIL A WRITTEN AGREEMENT IS FULLY EXECUTED.

ENGINEER OF RECORD:

MEYERS+
ENGINEERS

275 Madison Avenue, Suite 1200 New York, NY 10016 332.240.0500 meyersplus.com

STAMP:

01/28/2025

PROJECT INFORMATION:
LOWER EAST SIDE
PROJECT INFORMATION:
167 ORCHARD STREET
MANHATTAN, NY 10002

DRAWN BY: Author
CHECKED BY: Checker
PROJECT MANAGER: SG DESIGN MANAGER:
SG CONSTR. MANAGER:
PROJECT NO: 24.20093.000
TEMPLATE VERSION: 04.28.2023

REVISIONS
REV. DATE DESCRIPTION
01/27/2025 80% SUBMISSION
02/18/2025 100% SUBMISSION

MECHANICAL
DETAILS SHEET #1

M-601.00
SHEET 10 of 12



sweetgreen

3102 WEST 36TH STREET
LOS ANGELES, CALIFORNIA 90018

THESE DRAWINGS & SPECIFICATIONS ARE CONFIDENTIAL AND SHALL REMAIN THE SOLE PROPERTY OF SWEETGREEN CORPORATION. THEY SHALL NOT BE REPRODUCED (IN WHOLE OR IN PART), SHARED WITH THIRD PARTIES OR USED IN ANY MANNER ON OTHER PROJECTS OR EXTENSIONS TO THIS PROJECT WITHOUT THE PRIOR WRITTEN CONSENT OF SWEETGREEN CORPORATION. THESE DRAWINGS & SPECIFICATIONS ARE INTENDED TO EXPRESS DESIGN INTENT FOR A PROTOTYPICAL SWEETGREEN STORE WHICH IS SUBJECT TO CHANGE AT ANY TIME AND MAY NOT REFLECT ACTUAL SITE CONDITIONS. NEITHER PARTY SHALL HAVE ANY OBLIGATION OR LIABILITY TO THE OTHER (EXCEPT AS STATED ABOVE) UNTIL A WRITTEN AGREEMENT IS FULLY EXECUTED.

ENGINEER OF RECORD:

MEYERS+
ENGINEERS

275 Madison Avenue, Suite 1200 332.240.0500
New York, NY 10016 meyersplus.com

STAMP:

01/28/2025

PROJECT INFORMATION:
LOWER EAST SIDE

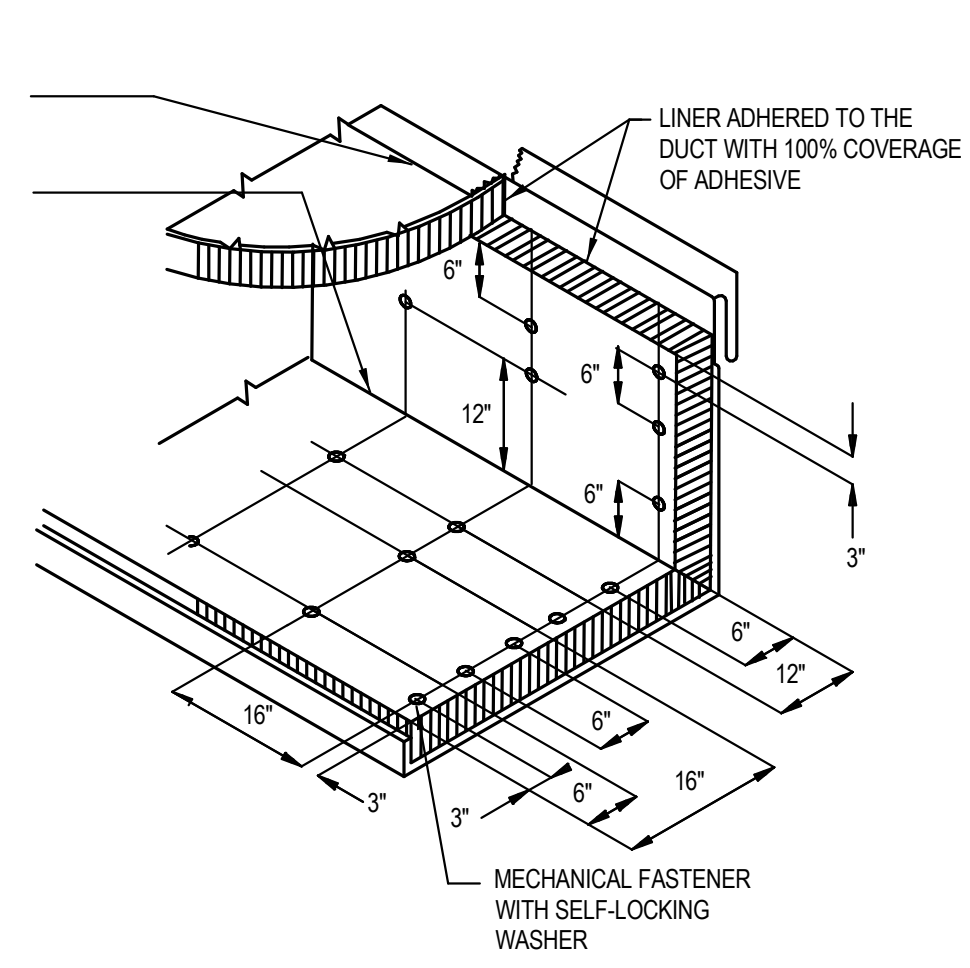
PROJECT INFORMATION:
167 ORCHARD STREET
MANHATTAN, NY 10002

DRAWN BY: Author
CHECKED BY: Checker
PROJECT MANAGER:
SG DESIGN MANAGER:
SG CONSTR. MANAGER:
PROJECT NO: 24.20093.000
TEMPLATE VERSION: 04.28.2023

REV.	DATE	DESCRIPTION
	01/27/2025	80% SUBMISSION
	02/18/2025	100% SUBMISSION

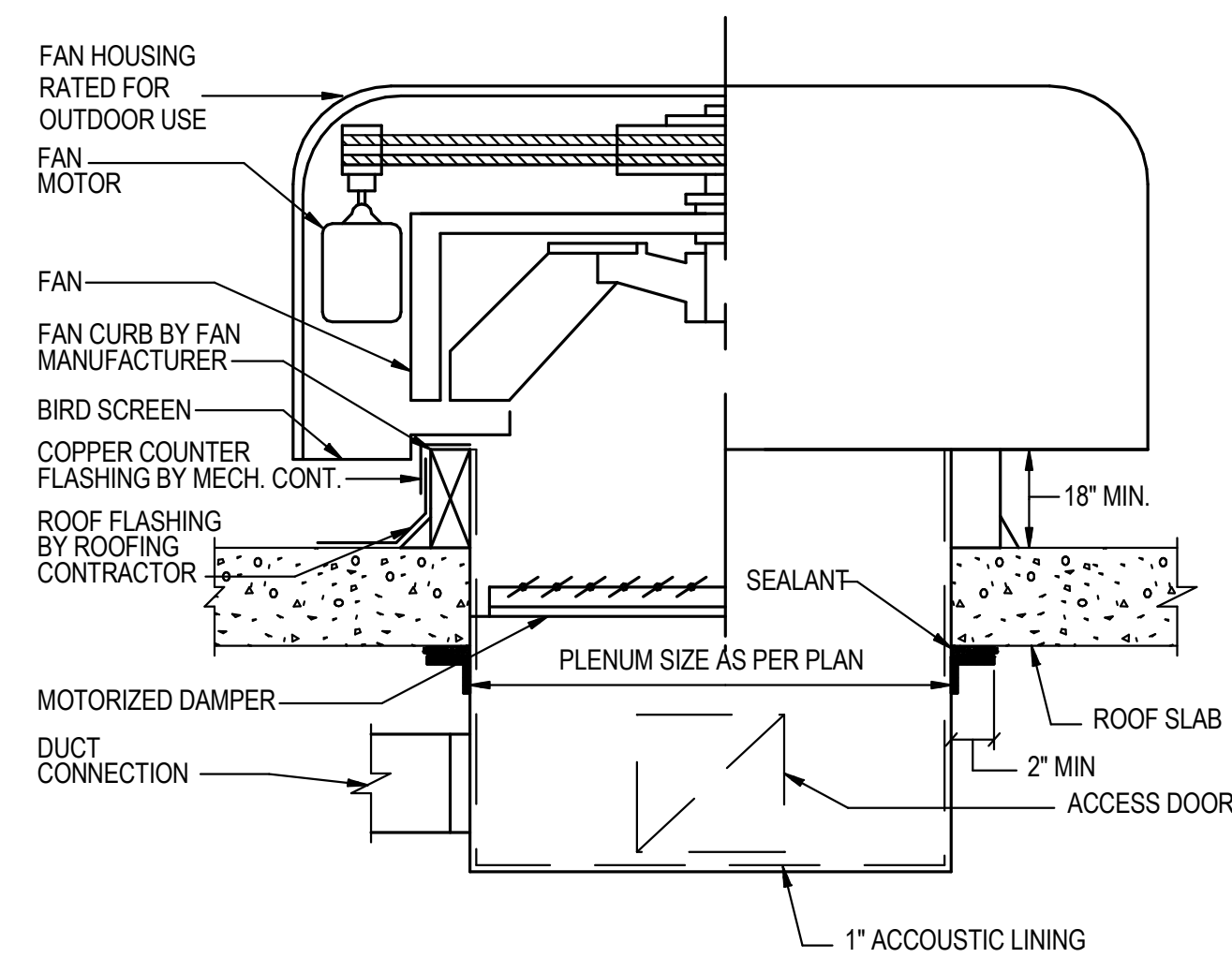
**MECHANICAL
DETAILS SHEET #2**

M-602.00
SHEET 11 of 12

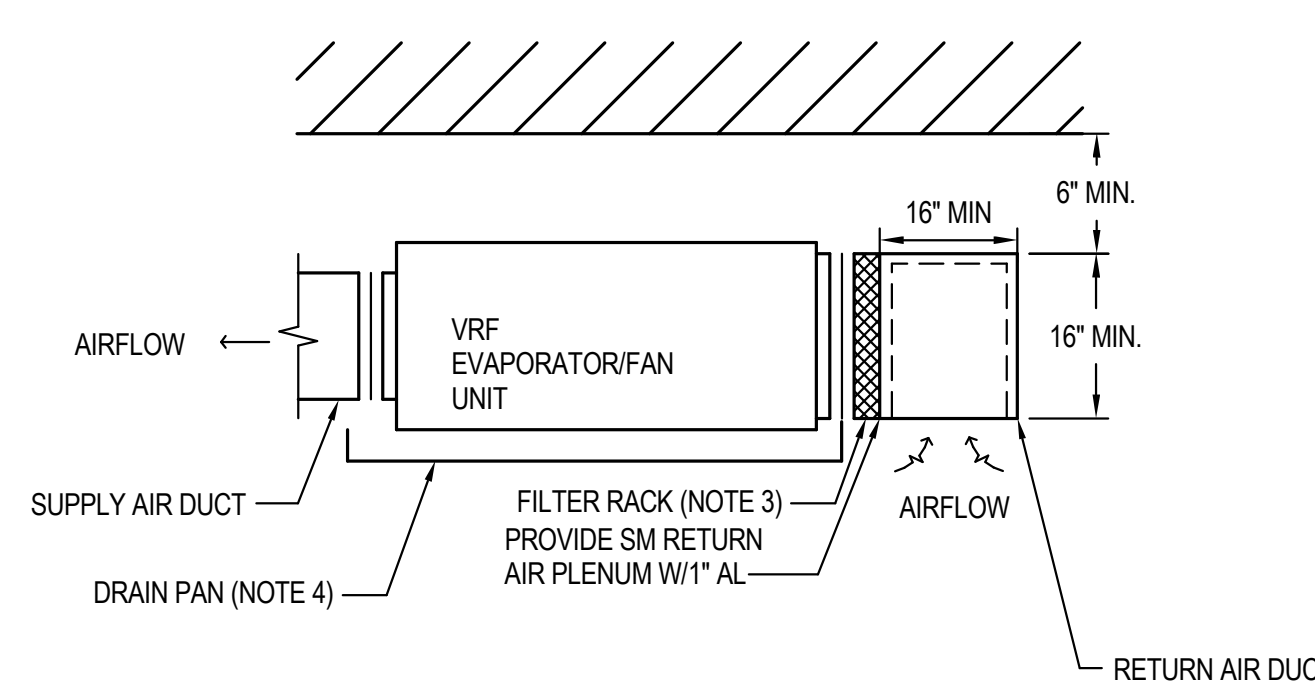


- MECHANICAL FASTENERS ARE TO BE SPOT WELDED TO DUCTWORK.
- PROVIDE SHEET METAL NOSING AS DESCRIBED IN SPECIFICATIONS.

9 ACoustical Duct Lining Detail
SCALE: NTS

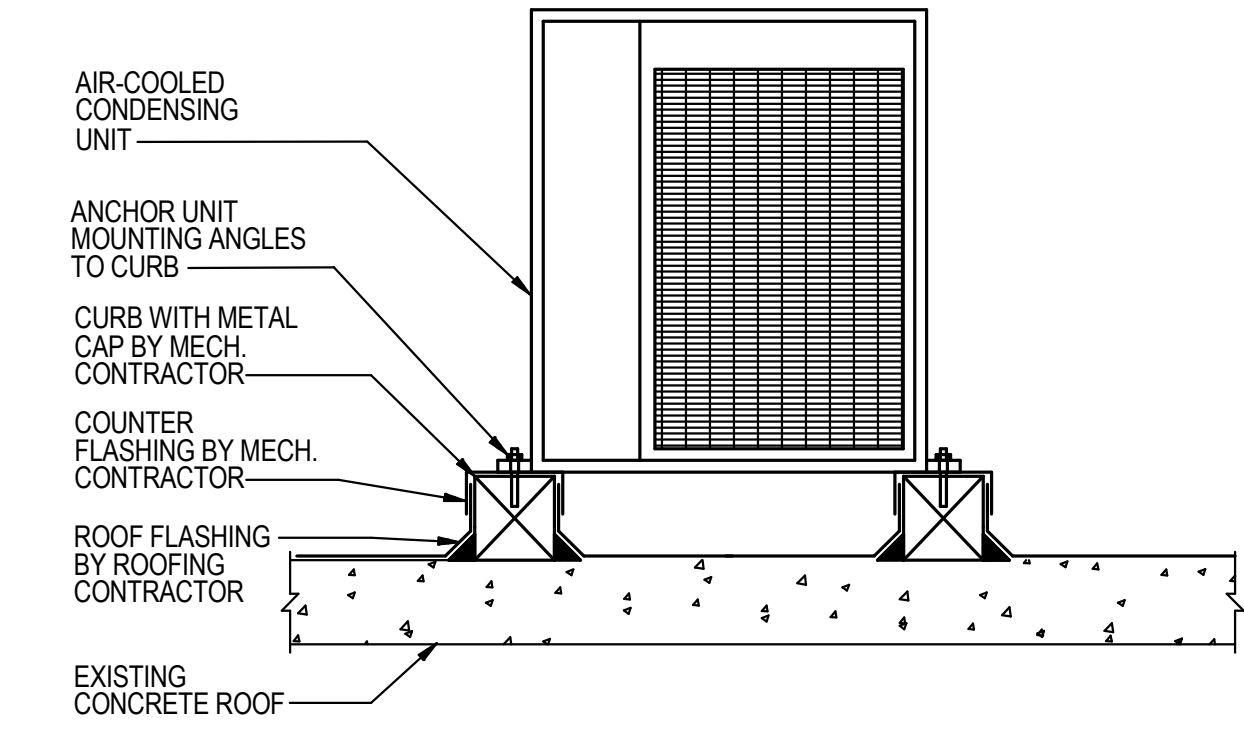


10 Roof Exhaust Fan
SCALE: NTS



- NOTES:**
- REFER TO SPECS FOR SUPPORT DETAILS FOR SUSPENDED EQUIPMENT.
 - PROVIDE FLEXIBLE CONNECTIONS AT UNIT SUPPLY AND RETURN.
 - FILTER RACKS AND RETURN BOOTS TO BE FABRICATED BY THE MECHANICAL CONTRACTOR. PROVIDE MINIMUM MERV-8 FILTERS.
 - PROVIDE DRAIN PAN FOR ALL FAN COIL UNITS.

11 VRV FAN UNIT NON-DUCTED RETURN AIR DETAIL
SCALE: NTS



12 CONDENSING UNIT ROOF MOUNTING DETAIL
SCALE: NTS

AIR-COOLED VRF AIR CONDITIONING SYSTEMS

EVAPORATOR (INDOOR UNITS)																	CONDENSER (OUTDOOR UNITS)										REFRIGERANT	MANUFACTURER									
DESIGNATION	SERVICE	MANUF. MODEL NUMBER	OUTDOOR AIRFLOW (CFM)	SUPPLY FAN		COOLING DATA				HEATING DATA		ELECTRICAL DATA		VIBRATION ISOLATION		OPERATING WEIGHT (LBS)	DESIGNATION	LOCATION	MANUF. MODEL NUMBER	SUMMER AMBIENT TEMP. DB (°F)	WINTER AMBIENT TEMP. DB (°F)	COOLING CAPACITY (TON)	HEATING CAPACITY (MBH)	MIN EFF. REQUIREMENT (EER/IEER/COP)	EER/IEER/COP	ELECTRICAL DATA			VIBRATION ISOLATION		OPERATING WEIGHT (LBS)						
				AIR FLOW (CFM)	EXT. S.P. (IN. WG.)	DB (°F)	WB (°F)	DB (°F)	WB (°F)	CAPACITY (MBH)	EAT (°F)	LAT (°F)	VOLTAGE/PHASE	UNIT MCA	TYPE											DEFL. (IN.)			VOLTAGE/PHASE	UNIT MCA		TYPE	DEFL. (IN.)				
HP-1	FOH	FXMQ48TBVJU	400	1000	0.80	80.0	70.0	55	55	48.0	60	85	27.0	208/1	3.60	C	1.00	105	ACCU-1	ROOF	RXYQ168AATJB	95	14	14	189	10.3/21.7/3.3	10.3/21.7/3.4	208/3	36.5	C	1.0	700	R-410A	DAIKIN			
HP-2	FOH/Hot Prep	FXMQ54TBVJU	250	1800	0.80	76.0	64.0	55	54	54.0	60	85	49.0	208/1	3.60	C	1.00	120																			
HP-3	Infinite Kitchen	FXMQ48TBVJU	200	1650	0.80	77.0	64.0	55	53	49.0	60	85	45.0	208/1	3.60	C	1.00	105																			
HP-4	Cold Prep/Warewash	FXFA30AAVJU	150	1000	-	77.0	65.0	55	54	30.0	60	85	34.0	208/1	1.30	-	-	60	ACCU-2	ROOF	RXYQ120AATJB	95	14	10	135	11.1/22.8/3.5	11.1/22.8/3.6	208/3	54.9	C	1.0	800	R-410A	DAIKIN			
HP-5	Storage East	FXFA18AAVJU	75	700	-	79.0	67.0	55	54	18.0	60	85	20.0	208/1	0.60	-	-	60																			
HP-6	Restrooms East	FXFA18AAVJU	75	350	-	79.0	67.0	55	54	18.0	60	85	20.0	208/1	0.60	-	-	60																			
HP-7	Storage West	FXFA18AAVJU	150	700	-	77.0	65.0	55	54	18.0	60	85	20.0	208/1	0.60	-	-	60																			
HP-8	Operations Office	FXAQ07PVJU	0	160	-	78.0	66.0	55	54	7.5	60	85	8.5	208/1	0.40	-	-	40																			

- NOTES:
 1. PROVIDE SEPARATE POWER CONNECTIONS AND DISCONNECT SWITCH FOR EACH INDOOR AND OUTDOOR UNIT. COORDINATE WITH ELECTRICAL CONTRACTOR.
 2. PROVIDE EXTERNAL CONDENSATE PUMP FOR ALL UNITS THAT DO NOT CONTAIN AN INTERNAL CONDENSATE PUMP. COORDINATE WITH ELECTRICAL CONTRACTOR.
 3. PROVIDE MERV 13 FILTER BOX.
 4. BALANCE ALL INDOOR UNITS TO INDICATED SUPPLY AND OUTDOOR AIRFLOW RATES.
 5. PROVIDE WALL MOUNTED THERMOSTAT WITH REMOTE MONITORING CAPABILITIES. THERMOSTAT TO BE WIRED TO WALL MOUNTED TEMPERATURE SENSOR. COORDINATE LOCATIONS WITH ARCHITECT.
 6. COORDINATE ALL REFRIGERANT PIPE SIZING, LENGTHS, AND CONSTRUCTION REQUIREMENTS WITH MANUFACTURER.
 7. OUTDOOR UNITS ARE TO BE PROVIDED WITH WIND BAFFLE FOR LOW AMBIENT OPERATION AND SNOW HOODS.
 8. PROVIDE NEW 4" EQUIPMENT PAD FOR EACH CONDENSING UNIT. PROVIDE 1" NEOPRENE PADDING BETWEEN FACTORY EQUIPMENT LEGS AND PAD. ALL MATERIALS ARE TO BE RATED FOR OUTDOOR USE.
 9. REFER TO MECHANICAL SPECIFICATIONS FOR VIBRATION ISOLATION AND CONTROL REQUIREMENTS.
 10. PROVIDE HIGH LEVEL SWITCH IN MAIN DRAIN PAN TO SHUT OFF EVAPORATOR UNIT.

FANS

DESIGNATION	SERVICE	MANUF. MODEL NUMBER	TYPE	CFM	EXTERNAL STATIC PRESSURE (IN. WG.)	RPM	BHP	MOTOR		MOTOR TYPE	OPERATING WEIGHT (LBS)	MANUFACTURER
								HP	VOLTAGE/PHASE			
OAF-1	OUTSIDE AIR	90QMX	INLINE	1300	1.0	2801	0.46	3/4	208/1	BELT	205	COOK
TXF-1	TOILET EXHAUST	101C28DOR60VF	DOWNBLAST	650	0.50	1743	0.314	1/3	208/1	ECM	100	COOK
KXF-1	KITCHEN EXHAUST	101C28DOR60VF	DOWNBLAST	750	0.50	1842	0.192	1/3	208/1	ECM	100	COOK

- NOTES:
 1. PROVIDE EXTERNAL DISCONNECT RATED FOR OUTDOOR USE. COORDINATE WITH ELECTRICAL CONTRACTOR.
 2. REFER TO MECHANICAL SPECIFICATIONS FOR VIBRATION ISOLATION AND CONTROL REQUIREMENTS. COORDINATE WITH MANUFACTURER RECOMMENDED MOUNTING REQUIREMENTS.
 3. ALL FANS ARE TO BE PROVIDED WITH INTERNAL BACKDRAFT DAMPER.
 4. COORDINATE APPROVED FAN SUBMITTAL WITH SHEET METAL CONTRACTOR PRIOR TO FABRICATION.
 5. MANUFACTURER TO PROVIDE ROOF CURB. COORDINATE CURB DIMENSIONS WITH ROOF OPENING AND FAN REQUIREMENTS. REFER TO MECHANICAL DETAILS AND FLOOR PLANS.
 6. COORDINATE ALL ROOF FLASHING REQUIREMENTS WITH BUILDING. REFER TO MECHANICAL DETAILS.
 7. FAN TO BE PROVIDED WITH MOTOR SPEED DIAL FOR BALANCING.
 8. FAN ENCLOSURE AND ACCESSORIES ARE TO BE RATED FOR OUTDOOR USE.
 9. FAN TO BE TIED INTO AC UNIT PROGRAMMABLE SCHEDULE OR TIME CLOCK IF REQUIRED. PROVIDE ALL REQUIRED CONTACTS AND INTERLOCKS.

CONDENSING UNIT SCHEDULE

DESIGNATION	DESCRIPTION	PAIRED WITH	NUMBER OF COMPRESSORS	REFRIGERANT	WEIGHT (LB)	ELECTRICAL DATA			SUPPLIER	INSTALLER	MODEL	MANUFACTURER	REMARKS
						VOLTAGE/PHASE	UNIT MCA	UNIT FLA					
CU-1	WALK-IN COOLER REMOTE CONDENSING UNIT	NA	1	R448A	260	208/1	25	16.3	KES	KES	BY KES	BY KES	FURNISHED WITH THE WALK-IN COOLER

ELECTRIC HEATING COIL

DESIGNATION	LOCATION	MANUF. MODEL NUMBER	CFM	EAT (°F)	LAT (°F)	DUCT SIZE W x H (INCHES)	CAPACITY (KW)	CONTROL STEPS	VOLTAGE/PHASE	MANUFACTURER
EHC-1	FOOD PREP	IDHE	1,300	0	40	24X20	16	SCR	208/3	GREENHECK

NOTES:
 1. PROVIDE EXTERNAL DISCONNECT SWITCH AND DUCT MOUNTED SMOKE DETECTOR. COORDINATE WITH ELECTRICAL CONTRACTOR.
 2. PROVIDE:
 A. AIRFLOW PROVING SWITCH CAPABLE OF 300FPM AIR VELOCITY
 B. AUTOMATIC AND MANUAL RESET THERMAL CUTOUPS
 C. SAFETY MAGNETIC CONTACTOR
 D. 120V/24V TRANSFORMER FOR SCR CONTROLS
 3. COORDINATE INSTALLED LOCATION WITH ALL CODE REQUIRED CLEARANCES.
 4. COORDINATE APPROVED UNIT SUBMITTAL WITH SHEET METAL CONTRACTOR PRIOR TO PROCUREMENT AND INSTALLATION.
 5. PROVIDE DUCT MOUNTED THERMOSTAT TO MAINTAIN DISCHARGE AIR TEMPERATURE OF 25 DEGREES FAHRENHEIT (ADJ).
 6. COORDINATE CONTROL REQUIREMENTS AND SYSTEM INTERLOCKS WITH CONTROLS CONTRACTOR AND FIRE ALARM VENDOR. REFER TO MECHANICAL PLANS.

AIR OUTLETS AND INLETS

DESIGNATION	MANUF. MODEL NUMBER	FACE SIZE (IN)	AIR FLOW (CFM)	NECK SIZE (IN)	NC LEVEL	MANUFACTURER
CD-A	OMNI-AA	24"X24"	0-500	12	18	TITUS
LD-A	FL-20HT	2" SLOT /4" LENGTH	0-300	8	16	TITUS
LD-R	FL-20HT	2" SLOT	-	-	-	TITUS
RG-A	350RL	12"X12"	0-200	-	-	TITUS
RG-B	350RL	24"X24"	0-500	-	-	TITUS
EG-A	350RL	12"X12"	0-200	8	12	TITUS

- NOTES:
 1. CONFIRM BORDER, TRIM AND FINISH DETAILS WITH ARCHITECTURAL DRAWINGS.
 2. ALL EXHAUST/RETURN INLETS SHALL BE PROVIDED WITH OPPOSED BLADE DAMPER (OBD).
 3. ALL NON-DUCTED RETURN INLETS AND SLOTS ARE TO BE PROVIDED WITH LIGHT SHIELDS.
 4. ALL SUPPLY AND EXHAUST AIR OUTLETS SHALL BE PROVIDED WITH A VOLUME DAMPER. OUTLETS LOCATED ABOVE INACCESSIBLE CEILINGS SHALL BE PROVIDED WITH CABLE OPERATED DAMPERS. COORDINATE WITH SHEET METAL CONTRACTOR.
 5. FOR ALL OUTLETS INDICATED WITH BLANKOFFS, PROVIDE NEXT LARGER NECK SIZE. REFER TO FLOOR PLAN.
 6. COORDINATE WITH MANUFACTURER RECOMMENDED NECK SIZING FOR THE SPECIFIC AIRFLOW QUANTITY OF EACH AIR OUTLET. NC LEVELS SHALL NOT EXCEED THE INDICATED VALUES.
 7. COORDINATE APPROVED AIR OUTLET SUBMITTAL AND CONNECTIONS REQUIREMENTS WITH SHEET METAL CONTRACTOR.
 8. ALL SG-A TYPE SUPPLY GRILLES ARE TO BE DOUBLE DEFLECTION AND PRE-ADJUSTED FOR 45 DEGREE DEFLECTION.



sweetgreen

3102 WEST 36TH STREET
 LOS ANGELES, CALIFORNIA 90018

THESE DRAWINGS & SPECIFICATIONS ARE CONFIDENTIAL AND SHALL REMAIN THE SOLE PROPERTY OF SWEETGREEN CORPORATION. THEY SHALL NOT BE REPRODUCED (IN WHOLE OR IN PART), SHARED WITH THIRD PARTIES OR USED IN ANY MANNER ON OTHER PROJECTS OR EXTENSIONS TO THIS PROJECT WITHOUT THE PRIOR WRITTEN CONSENT OF SWEETGREEN CORPORATION. THESE DRAWINGS & SPECIFICATIONS ARE INTENDED TO EXPRESS DESIGN INTENT FOR A PROTOTYPICAL SWEETGREEN STORE WHICH IS SUBJECT TO CHANGE AT ANY TIME AND MAY NOT REFLECT ACTUAL SITE CONDITIONS. NEITHER PARTY SHALL HAVE ANY OBLIGATION OR LIABILITY TO THE OTHER EXCEPT AS STATED ABOVE UNTIL A WRITTEN AGREEMENT IS FULLY EXECUTED.

ENGINEER OF RECORD:

MEYERS+
 ENGINEERS

275 Madison Avenue, Suite 1200 332.240.0500
 New York, NY 10016 meyersplus.com

STAMP:

01/28/2025

PROJECT INFORMATION:
LOWER EAST SIDE
167 ORCHARD STREET
MANHATTAN, NY 10002

DRAWN BY: Author
 CHECKED BY: Checker
 PROJECT MANAGER:
 SG DESIGN MANAGER:
 SG CONSTR. MANAGER:
 PROJECT NO: 24.20093.000
 TEMPLATE VERSION: 04.28.2023

REVISIONS
 REV. DATE DESCRIPTION
 01/27/2025 80% SUBMISSION
 02/18/2025 100% SUBMISSION

MECHANICAL SCHEDULES

M-701.00
 SHEET 12 of 12