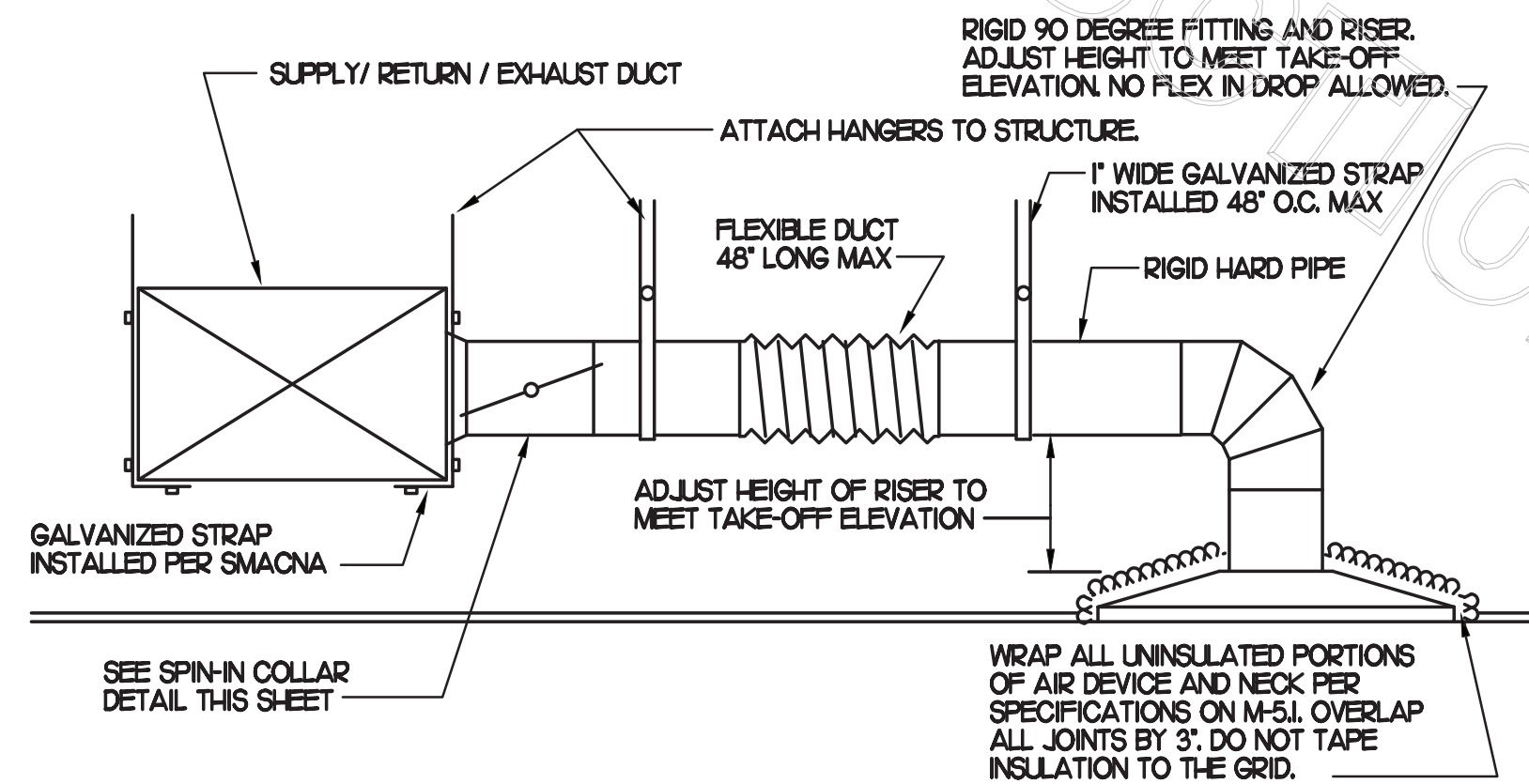
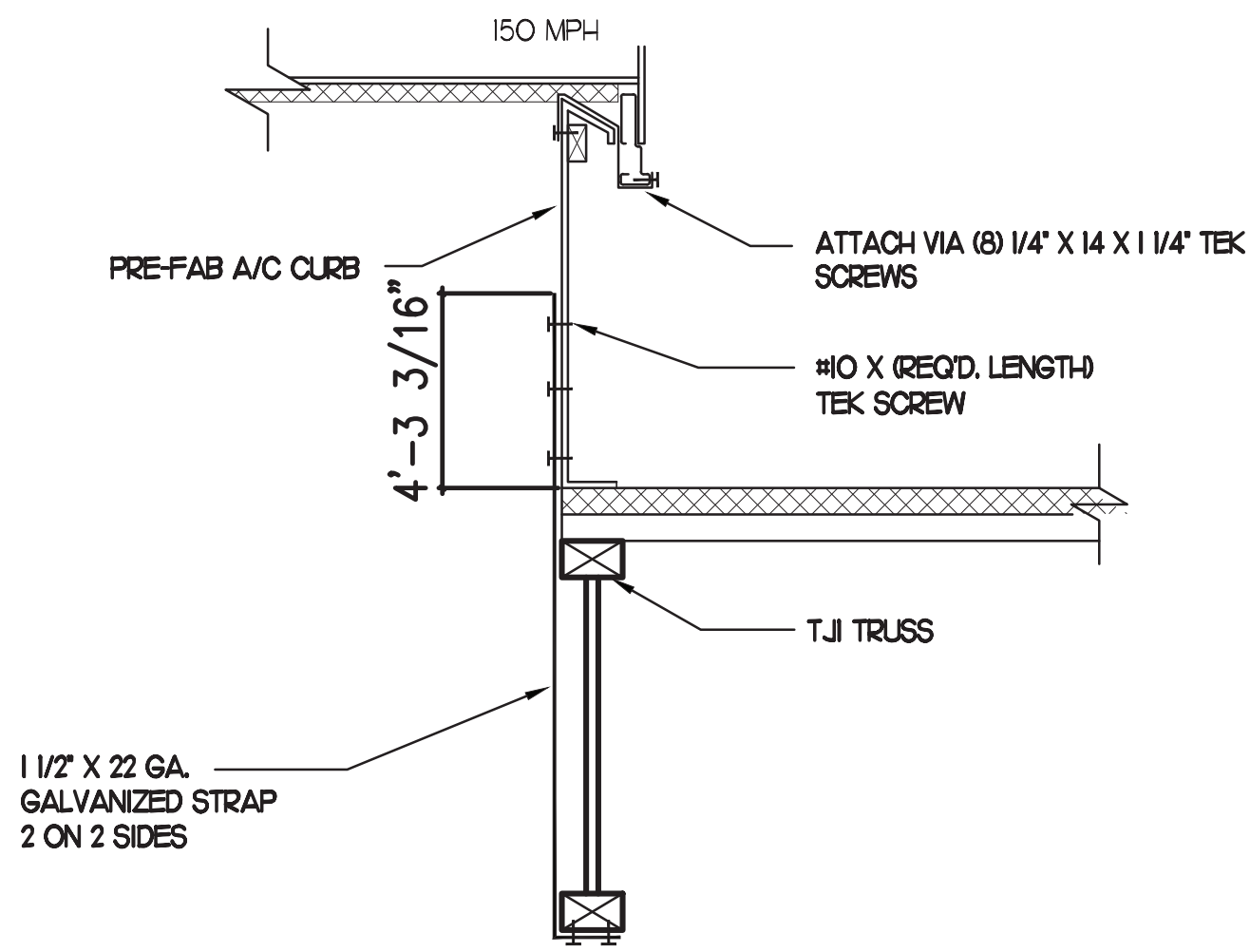


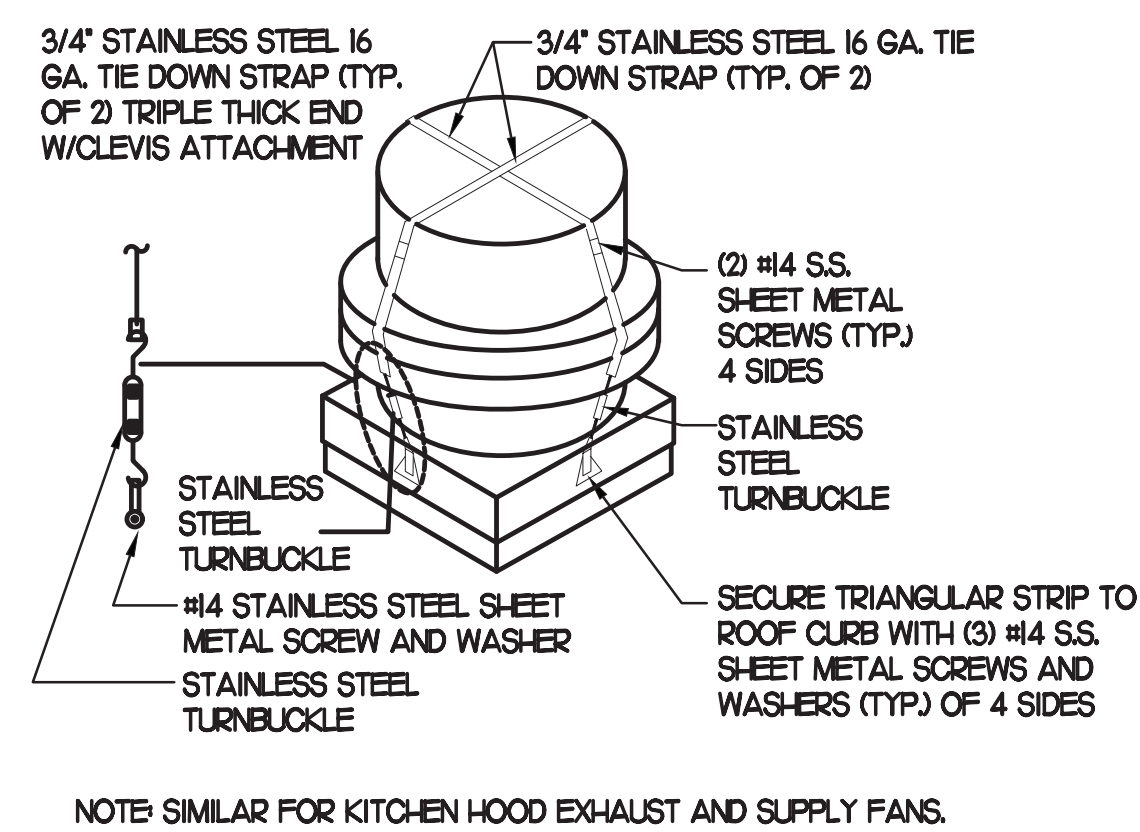
1 KITCHEN HOOD EXHAUST FAN
NO SCALE



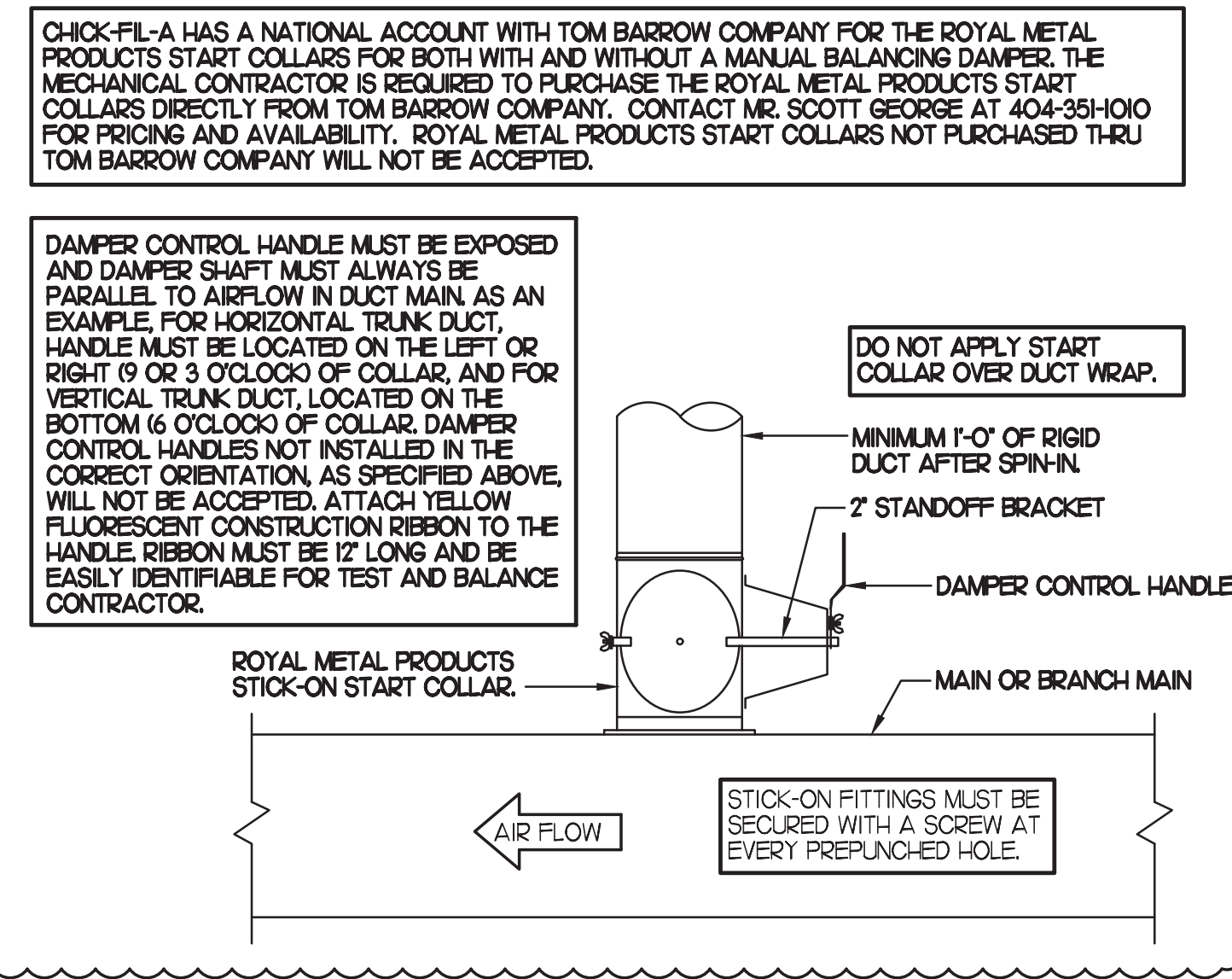
3 SAG/RAG/GRILLE TAKE-OFF
NO SCALE



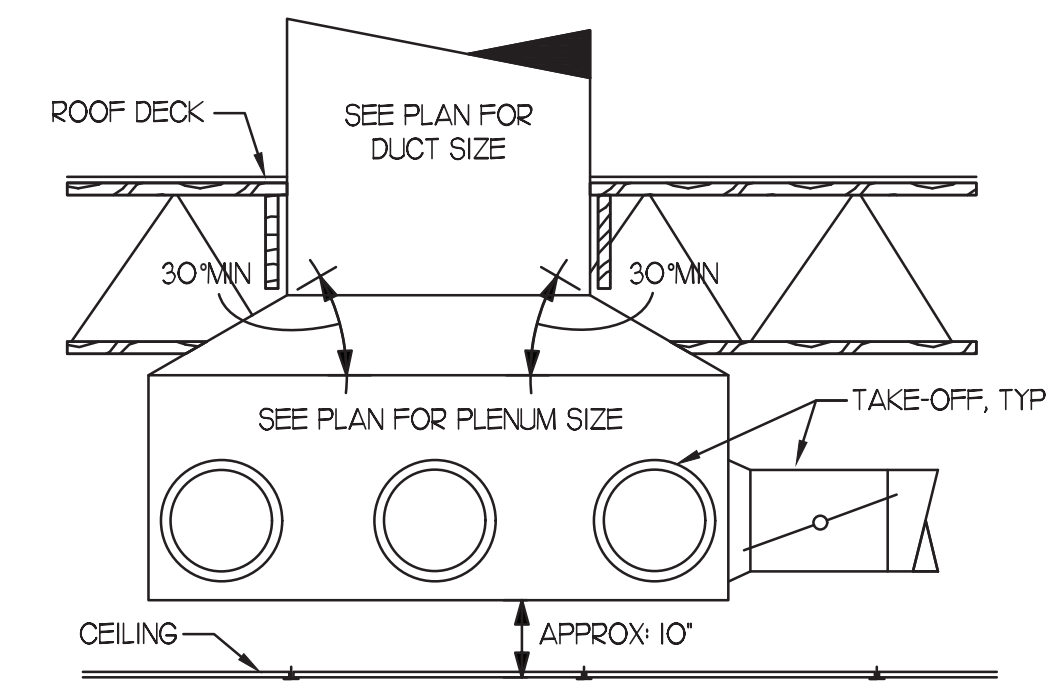
6 RTU TIE-DOWNS DETAIL
NO SCALE



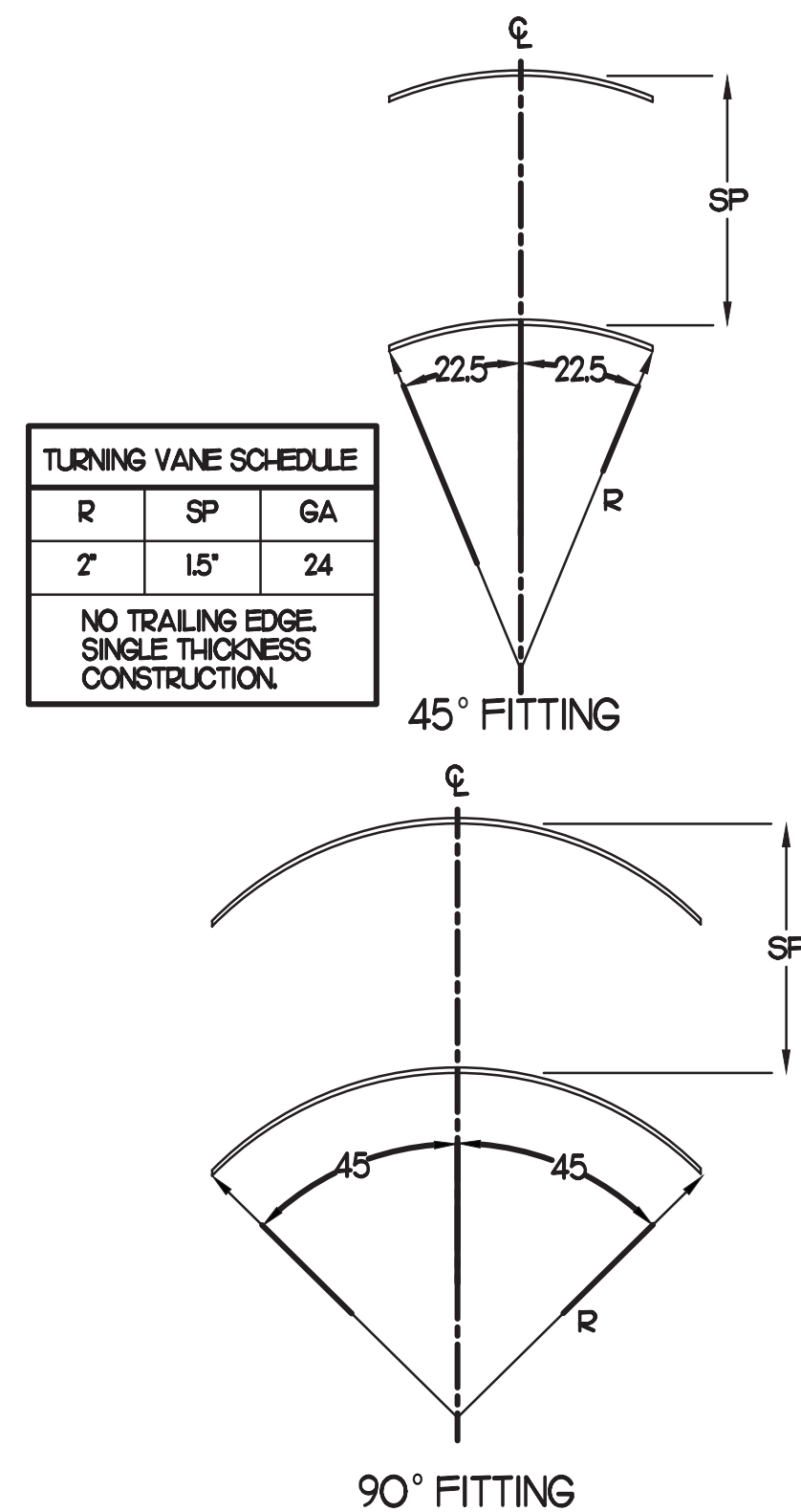
7 FAN SECURING DETAIL
NO SCALE



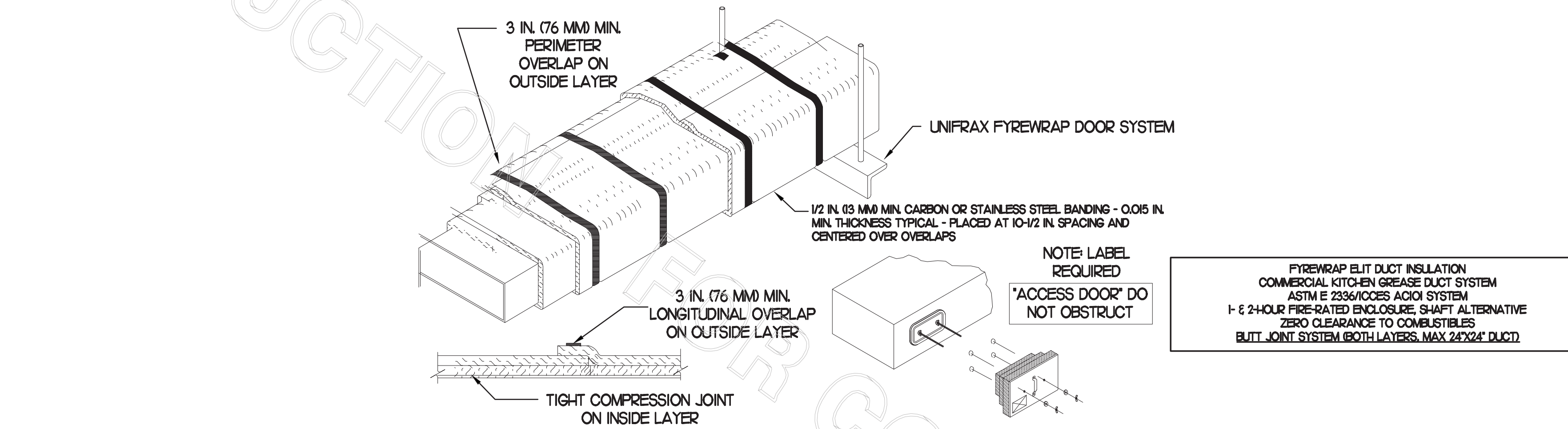
2 START COLLAR
NO SCALE



5 RETURN DROP GEOMETRY
NO SCALE



8 TURNING VANES
NO SCALE



- UNIFRAX FIBREWRAP ELITE I5 DUCT INSULATION HAS BEEN TESTED IN ACCORDANCE WITH ASTM E 2336 TO PROVIDE ZERO CLEARANCE TO COMBUSTIBLES AND MEETS THE REQUIREMENTS FOR ONE OR TWO HOUR ENCLOSURES. THROUGH PENETRATIONS FIRESTOP SYSTEMS ARE TESTED IN ACCORDANCE WITH EITHER ASTM E 814 OR UL 1479. ICC-ES APPROVAL PER REPORT ESR 2213 OR ESR 2832. UNDERWRITER'S LABORATORIES (UL) LISTINGS SHOW COMPLIANCE TO UL 1479 FOR THROUGH PENETRATIONS FIRESTOP SYSTEMS.
- COMPLIANT TO THE FOLLOWING CODES:
 BUILDING CODE: INTERNATIONAL BUILDING CODE EDITION 2012
 ELECTRICAL CODE: NATIONAL ELECTRICAL CODE EDITION 2012
 PLUMBING CODE: INTERNATIONAL PLUMBING CODE EDITION 2012
 ENERGY CODE: INTERNATIONAL ENERGY CONSERVATION CODE
 MECHANICAL CODE: INTERNATIONAL MECHANICAL CODE EDITION 2012
 FIRE CODE: INTERNATIONAL FIRE CODE EDITION 2012
 FUEL GAS CODE: INTERNATIONAL FUEL GAS CODE EDITION 2012
 ACCESSIBILITY CODE: ANSI A117.1 EDITION 2009
- INSULATION APPLIED IN TWO LAYERS WITH TIGHT COMPRESSION JOINT ON INSIDE LAYER AND 3 INCH MINIMUM OVERLAPS ON BOTH PERIMETER AND LONGITUDINAL OVERLAPS ON OUTSIDE LAYER.
- GREASE EXHAUST DUCT RUNS FROM THE HOOD EXHAUST CONNECTION UP TO THE EXHAUST FAN ON THE ROOF WITH MINIMAL TURNS OR BENDS AND MAINTAINING MINIMUM 1/4 UNIT VERTICAL RISE PER 12 UNITS HORIZONTAL RUN. NFPA 96 COMPLIANT ACCESS DOORS LOCATED AS REQUIRED BY CODE.
- UNIFRAX FIBREWRAP ELITE I5 ACCESS DOORS AS SPECIFIED IN ICC-ES BUILDING CODE REPORTS ESR 2213 OR ESR 2832.
- ROOF MOUNTED EXHAUST FAN IS MOUNTED ON A HINGED BASE WHICH ALLOWS ACCESS TO THE DUCT FROM THE ROOF.
- SUPPORT HANGER SYSTEMS DO NOT NEED TO BE WRAPPED PROVIDED THE HANGER RODS ARE AT LEAST A MINIMUM OF 3/8 IN. DIAMETER. USE MINIMUM 2 X 2 X 1/8 IN. STEEL ANGLE OR SMAONA EQUIVALENT SUPPORT SYSTEM.
- UNIFRAX FIBREWRAP ELITE I5 DUCT ENCLOSURE SYSTEM SHALL BE INSTALLED IN ACCORDANCE WITH MANUFACTURER'S INSTRUCTIONS.
- UNIFRAX FIBREWRAP ELITE I5 DUCT WRAP SHALL BE INSTALLED ON THE DUCT FROM THE HOOD CONNECTION TO THE CONNECTION TO THE FAN.

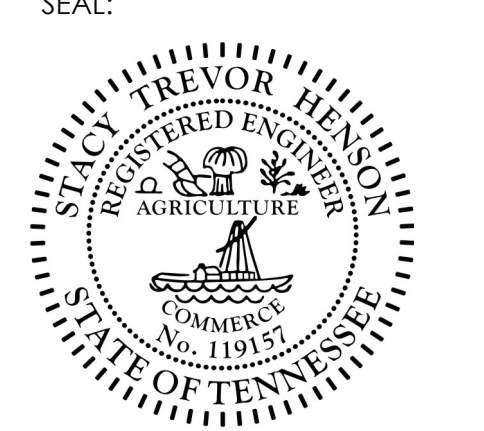
4 GREASE EXHAUST DUCT PROTECTION TO COMBUSTIBLES DETAIL
NO SCALE



Chick-fil-A
5200 Buffington Road
Atlanta, Georgia
30349-2998

INTERPLAN
INTERPLAN LLC
AR99238
CA 8660
ARCHITECTURE
ENGINEERING
PERMITTING

220 E. CENTRAL PKWY, STE 4000
ALFAMONTE SPRINGS, FL 32701
407.645.5038



CHICK-FIL-A
DYERSBURG FSU
2440 Lake Rd
Dyersburg, TN 38024

FSR#02780
BUILDING TYPE / SIZE: S08N-104 V4
RELEASE: 2023.04

PRINTED FOR: CONSTRUCTION

REVISION SCHEDULE

NO.	DATE	DESCRIPTION
1	7/20/2023	ISSUED FOR PERMITS

CONSULTANT PROJECT # 2022.0777
DATE July 2023
DRAWN BY AE
CHECKED BY DAK
Information contained on this drawing and all related files produced for above named project may not be reproduced or modified without express written or verbal consent from authorized project representatives.
SHEET MECHANICAL DETAILS

