

Report By:

National TAB
1329 E. KEMPER ROAD
SUITE 4210
CINCINNATI, OH 45246



Report: TAB Report
Function: Test, Adjust, & Balance
Date: 05/02/2025
Completed By: National TAB

PROJECT
04-28-25 CULVERS ROCKMART, GA

1939 NATHAN DEAN PKWY

ROCKMART, GA 30153

Client

Accurex
PO Box 410
Schofield, WI 54476

National TAB

Project: 04-28-25 CULVERS ROCKMART, GA

Table Of Contents

Section	Page #
Issue Data	3
AHU/RTU	12
FAN - Exhaust	16
Kitchen Hood Type I	22
Kitchen Hood Type II	24

Issue List

- AC1 BRANCH DAMPER IS STUCK SHUT
- AC1 DAMPER HANDLE IS MISSING
- AC1 DAMPER INACCESSIBLE
- AC1 MISSING RETURN AND SUPPLY
- AC2 DIFFUSER IS MISSING A DAMPER
- ACCUREX CONTROL BOARD IS ABOVE THE CEILING GRID
- DUCTWORK IS MISSING INSULATION
- EXCESSIVE FLEX RUNS



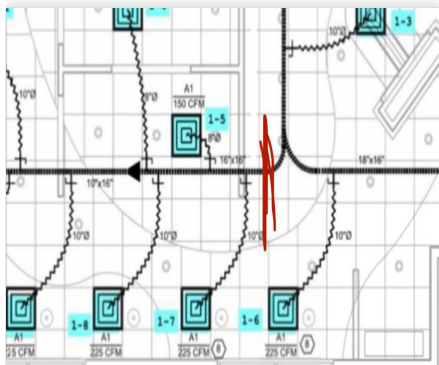
04-28-25 CULVERS ROCKMART, GA

Project Issue Information

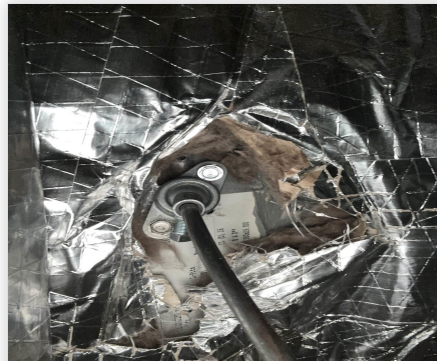
Issue Name : AC1 BRANCH DAMPER IS STUCK SHUT
Description : AC1 has a branch damper that is broken and stuck shut. This branch restricts the airflow of diffusers 4, 5, 7, 8, 9, 10, & 11. Until this is fixed, the unit is unable to be balanced.

Created By : National TAB **Assigned To :** National TAB - Ben Searles
Status : Open
Priority : Urgent **Asset Tag :**
Originated Date : 05/01/2025 - Ben Searles - National TAB

Project Issue File Details



05/01/2025



05/01/2025



04-28-25 CULVERS ROCKMART, GA

Project Issue Information

Issue Name : AC1 DAMPER HANDLE IS MISSING
Description : The damper for the diffuser in the men's restroom is missing a damper handle.
Created By : National TAB **Assigned To :** National TAB - Ben Searles
Status : Open
Priority : Urgent **Asset Tag :**
Originated Date : 05/01/2025 - Ben Searles - National TAB

Project Issue File Details



05/01/2025



04-28-25 CULVERS ROCKMART, GA

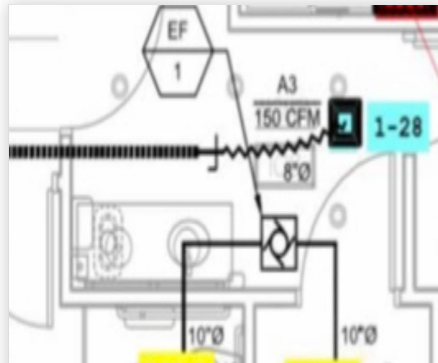
Project Issue Information

Issue Name : AC1 DAMPER INACCESSIBLE
Description : The damper to the diffuser in the women's restroom is located above hard ceiling and is inaccessible. This is where the plans requested it to be located. The damper handle will need to be moved in order to effectively balance the diffuser.
Created By : National TAB **Assigned To :** National TAB - Ben Searles
Status : Open
Priority : Urgent **Asset Tag :**
Originated Date : 05/01/2025 - Ben Searles - National TAB

Project Issue File Details



05/01/2025



05/01/2025

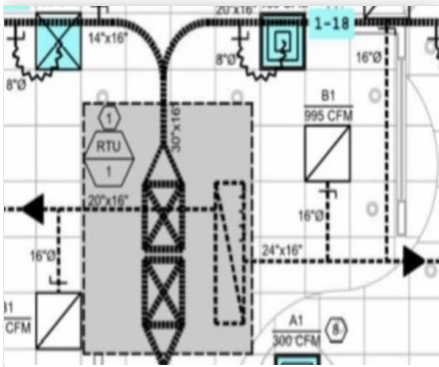


04-28-25 CULVERS ROCKMART, GA

Project Issue Information

Issue Name : AC1 MISSING RETURN AND SUPPLY
Description : AC1 is missing a return as well as supply diffuser 1-18 as depicted in the image below. Without these, the unit is unable to be properly balanced.
Created By : National TAB **Assigned To :** National TAB - Ben Searles
Status : Open
Priority : Urgent **Asset Tag :**
Originated Date : 05/01/2025 - Ben Searles - National TAB

Project Issue File Details



05/01/2025



05/01/2025



05/01/2025



04-28-25 CULVERS ROCKMART, GA

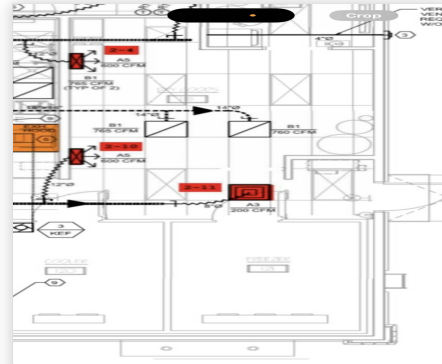
Project Issue Information

Issue Name : AC2 DIFFUSER IS MISSING A DAMPER
Description : Diffuser 11 for AC2 is missing a damper and is unable to be balanced. The mechanical on-site reviewed the ductwork and was unable to locate the damper as well.
Created By : National TAB **Assigned To :** National TAB - Ben Searles
Status : Open
Priority : Urgent **Asset Tag :**
Originated Date : 05/01/2025 - Ben Searles - National TAB

Project Issue File Details



05/01/2025



05/01/2025

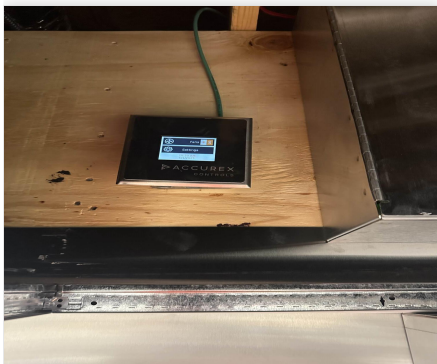


04-28-25 CULVERS ROCKMART, GA

Project Issue Information

Issue Name : ACCUREX CONTROL BOARD IS ABOVE THE CEILING GRID
Description : The Accurex control board for the kitchen hoods is located above the ceiling grid. This should be dropped to be more accessible.
Created By : National TAB **Assigned To :** National TAB - Ben Searles
Status : Open
Priority : Low **Asset Tag :**
Originated Date : 05/01/2025 - Ben Searles - National TAB

Project Issue File Details



05/01/2025



04-28-25 CULVERS ROCKMART, GA

Project Issue Information

Issue Name : DUCTWORK IS MISSING INSULATION
Description : There is a line of ductwork that is missing insulation. This ductwork feeds the returns of AC2.
Created By : National TAB **Assigned To :** National TAB - Ben Searles
Status : Open
Priority : Low **Asset Tag :**
Originated Date : 05/01/2025 - Ben Searles - National TAB

Project Issue File Details



05/01/2025



04-28-25 CULVERS ROCKMART, GA

Project Issue Information

Issue Name : EXCESSIVE FLEX RUNS
Description : A couple instances of excessive flex being used was observed. Recommend shortening the runs to improve airflow to the diffusers.
Created By : National TAB **Assigned To :** National TAB - Ben Searles
Status : Open
Priority : Medium **Asset Tag :**
Originated Date : 05/01/2025 - Ben Searles - National TAB

Project Issue File Details



05/01/2025



05/01/2025

National TAB

Project: 04-28-25 CULVERS ROCKMART, GA

System/Unit: AHU/RTU



Asset: RTU1

AREA:DINING

Unit Data		
	Design	Actual
MFG	LENNOX	CAPTIVAIRE
Serial Num	-	7183191
Model Num	LGH210H4B	CAS-HVAC3-I.400-24-20T
Type	RTU	RTU
Configuration	VERTICAL	VERTICAL
Num OA Filters 1	-	4
OA Filter Size 1	-	16X25X2
Num Final Filter 1	-	8
Final Filter Size 1	-	20X25X2

Motor Data		
	Design	Actual
Motor MFG	-	TECO
Frame	-	215T
Horsepower	5	10
Motor Rpm	-	1755
Phase	3	3
Rated Voltage	208	208
Rated Amperage	-	27

Test Data		
	Design	Actual
SF CFM	7000	5248
RA CFM	4800	-
OA CFM	200	-
RL Voltage	-	208 CONTROL BOARD
RL Amperage	-	26.2 CONTROL BOARD
SF Rotation	-	CCW
SF System SetPt	-	59.3 HZ
RA Damper Position	-	2.2 VDC
Min OA Damper Position	-	1.7 VDC
Min OA Damper Type	-	ECON

General	
	Actual
Fan Rotation Correct	YES
Unit Filters Clean	YES
Condensate Drain Installed	YES

Completed By: Ben Searles on 05/02/2025

Notes:

THE UNIT'S OA SEEMS TO BE BETWEEN 0-3.9 INSTEAD OF 0-10. OA DAMPER WAS ADJUSTED TO ACCOUNT FOR THE CONVERSION.
 OA WAS NOT READ. THIS WILL BE BALANCED WHEN THE TECHNICIAN REVISITS THE SITE
 THE UNIT IS LOW ON TOTAL AIRFLOW AND IS RIGHT BELOW FLA. UNTIL THE OA DAMPER OPENS IT IS UNKNOWN IF WE WILL BE ABLE TO BALANCE TO THE INTENDED SUPPLY AIR RATE

Written By: Dan Hertenstein on 05/05/2025

National TAB

Project:04-28-25 CULVERS ROCKMART, GA

AHU/RTU



Diffuser Supply (GRD)

RTU1/DINING

Asset									
Asset Name	Location	Type	Size	DESIGN CFM	AK	CFM(1)	CFM(2)	FINAL CFM	% to design
SGRD1	DINING	A3	8"	150	1	187			-
SGRD2	DINING	A1	10"	300	1	398			-
SGRD3	DINING	A1	10"	300	1	335			-
SGRD4	DINING	A1	8"	150	1	30			-
SGRD5	DINING	A1	8"	150	1	16			-
SGRD6	DINING	A1	10"	225	1	346			-
SGRD7	DINING	A1	10"	225	1	0			-
SGRD8	DINING	A1	10"	225	1	46			-
SGRD9	DINING	A1	10"	225	1	19			-
SGRD10	DINING	A1	10"	225	1	29			-
SGRD11	DINING	A1	10"	225	1	44			-
SGRD12	DINING	A1	10"	225	1	264			-
SGRD13	DINING	A1	10"	225	1	251			-
SGRD14	DINING	A1	10"	225	1	250			-
SGRD15	DINING	A1	10"	225	1	256			-
SGRD16	DINING	A1	8"	150	1	196			-
SGRD17	DINING	A1	10"	300	1	245			-
SGRD18	DINING	A1	8"	150	1	-			-
SGRD19	DINING	A1	10"	225	1	290			-
SGRD20	DINING	A1	12"	500	1	238			-
SGRD21	DINING	A1	8"	200	1	128			-
SGRD22	DINING	A1	10"	350	1	201			-
SGRD23	DINING	A1	12"	450	1	414			-
SGRD24	DINING	A5	10"	350	1	262			-
SGRD25	DINING	A5	10"	350	1	118			-
SGRD26	DINING	A5	10"	350	1	349			-
SGRD27	DINING	A3	8"	150	1	169			-
SGRD28	DINING	A3	8"	150	1	167			-
Total				6975		5248	0	0	0%

Asset	Notes	Date	Written By
SGRD18	DIFFUSER IS MISSING PER PLANS	05/01/2025	Ben Searles

National TAB

Project: 04-28-25 CULVERS ROCKMART, GA

System/Unit: AHU/RTU



Asset: RTU2

AREA:KITCHEN

Unit Data		
	Design	Actual
MFG	LENNOX	CAPTIVAIRE
Serial Num	-	7183191
Model Num	LGH210H4B	CAS-HVAC3-1.400-24-20T
Type	RTU	RTU
Configuration	VERTICAL	VERTICAL
Num OA Filters 1	-	4
OA Filter Size 1	-	16X25
Num Final Filter 1	-	8
Final Filter Size 1	-	20X25X2
Num Final Filter 2	-	
Final Filter Size 2	-	

Test Data		
	Design	Actual
SF CFM	6800	5754
RA CFM	4800	-
OA CFM	2000	-
RL Voltage	-	209 CONTROL BOARD
RL Amperage	-	25.8 CONTROL BOARD
SF Rotation	-	CCW
SF System SetPt	-	60.0 HZ
RA Damper Position	-	1.9 VDC
Min OA Damper Position	-	2.0 VDC
Min OA Damper Type	-	ECON

Motor Data		
	Design	Actual
Motor MFG	-	TECO
Frame	-	215T
Horsepower	5	10
Motor Rpm	-	1755
Phase	3	3
Rated Voltage	208	208
Rated Amperage	-	27

General	
	Actual
Fan Rotation Correct	YES
Unit Filters Clean	YES
Condensate Drain Installed	YES

Completed By: Ben Searles on 05/02/2025

Notes:

THE UNIT'S OA SEEMS TO BE BETWEEN 0-3.9 INSTEAD OF 0-10. OA DAMPER WAS ADJUSTED TO ACCOUNT FOR THE CONVERSION.

OA WAS NOT READ. THIS WILL BE BALANCED WHEN THE TECHNICIAN REVISITS THE SITE

THE UNIT IS LOW ON TOTAL AIRFLOW AND IS RIGHT BELOW FLA, UNTIL THE OA DAMPER IS OPERATING CORRECTLY IT IS UNKNOW IF THE CAPACITY OF THE UNIT WILL BE SATISFIED.

Written By: Dan Hertenstein on 05/05/2025

National TAB

Project:04-28-25 CULVERS ROCKMART, GA

AHU/RTU



Diffuser Supply (GRD)

RTU2/KITCHEN

Asset									
Asset Name	Location	Type	Size	DESIGN CFM	AK	CFM(1)	CFM(2)	FINAL CFM	% to design
SGRD1	KITCHEN	A1	12"	600	1	262	277		-
SGRD2	KITCHEN	A1	12"	600	1	92	98		-
SGRD3	KITCHEN	A1	12"	600	1	567	635		-
SGRD4	KITCHEN	A5	10"	600	1	471	527		-
SGRD5	KITCHEN	A4	10"	300	1	55	44		-
SGRD6	KITCHEN	A4	10"	300	1	50	49		-
SGRD7	KITCHEN	A4	12"	375	1	178	606		-
SGRD8	KITCHEN	A4	12"	400	1	530	194		-
SGRD9	KITCHEN	A4	12"	400	1	180	700		-
SGRD10	KITCHEN	A5	12"	600	1	272	302		-
SGRD11	KITCHEN	A3	12"	200	1	640	367		-
SGRD12	KITCHEN	A4	10"	375	1	147	162		-
SGRD13	KITCHEN	A4	6"	400	1	184	520		-
SGRD14	KITCHEN	A4	10"	400	1	484	522		-
SGRD15	KITCHEN	A4	6"	300	1	481	461		-
SGRD16	KITCHEN	A4	6"	75	1	133	141		-
SGRD17	KITCHEN	A1	6"	50	1	131	149		-
Total				6575		4857	5754	0	0%

Asset	Notes	Date	Written By
SGRD11	NO DAMPER IS INSTALLED	05/01/2025	Ben Searles

National TAB

Project: 04-28-25 CULVERS ROCKMART, GA

System/Unit: FAN - Exhaust



Asset: EF1

AREA:RESTROOMS

Unit Data		
	Design	Actual
MFG	ACCUREX	ACCUREX
Model Num	XRED-090-D	XRED-090-D
Serial Num	-	26137917
Type	DOWNBLAST	DOWNBLAST
Configuration	VERTICAL	VERTICAL

Test Data		
	Design	Actual
CFM	450	415
Fan Rotation	-	CCW
System SetPt	-	5.5 DIAL
RL Voltage	-	[1]
RL Amperage	-	[1]

Motor Data		
	Design	Actual
Motor MFG	-	VARI-GREEN
Frame	-	N/L
Horsepower	-	1/10
Motor Rpm	-	1750
Phase	-	1
Voltage (rated)	-	115
Amperage (rated)	-	1.38
Service Factor	-	N/L

Completed By: Ben Searles on 05/02/2025

Notes:
[1] LIGHTSWITCH STYLE CONTROLLER - UNABLE TO READ VOLTS AND AMPS

Written By: Ben Searles on 05/02/2025

National TAB

Project: 04-28-25 CULVERS ROCKMART, GA

System/Unit: FAN - Exhaust



Asset: EF2

AREA:MOP ROOM

Unit Data		
	Design	Actual
MFG	ACCUREX	ACCUREX
Model Num	XCR-B80	XCR-B80
Type	CEILING	CEILING
Configuration	VERTICAL	VERTICAL

Test Data		
	Design	Actual
CFM	75	[1]
System SetPt	-	[1]

Completed By: Ben Searles on 05/02/2025

Notes:

[1] FAN WAS INACCESSIBLE DUE TO STAFF PRESENCE, WHICH PREVENTED THE TECHNICIAN FROM REACHING THE FANS. THESE WILL NEED TO BE BALANCED WHEN THE TECHNICIAN RETURNS TO THE SITE

Written By: Ben Searles on 05/02/2025

National TAB

Project: 04-28-25 CULVERS ROCKMART, GA

System/Unit: FAN - Exhaust



Asset: EF3

AREA:EMPLOYEE RR

Unit Data		
	Design	Actual
MFG	ACCUREX	ACCUREX
Model Num	XCR-B80	XCR-B80
Type	CEILING	CEILING
Configuration	VERTICAL	VERTICAL

Test Data		
	Design	Actual
CFM	75	[1]
System SetPt	-	[1]

Completed By: Ben Searles on 05/02/2025

Notes:

[1] FAN WAS INACCESSIBLE DUE TO STAFF PRESENCE, WHICH PREVENTED THE TECHNICIAN FROM REACHING THE FANS. THESE WILL NEED TO BE BALANCED WHEN THE TECHNICIAN RETURNS TO THE SITE

Written By: Ben Searles on 05/02/2025

National TAB

Project: 04-28-25 CULVERS ROCKMART, GA

System/Unit: FAN - Exhaust



Asset: KEF1

AREA:GRIDDLE HOOD FAN

Unit Data		
	Design	Actual
MFG	ACCUREX	ACCUREX
Model Num	XRUB-161XP-15	XCUE-140-10-VG
Serial Num	-	26137925
Type	UPBLAST	UPBLAST
Configuration	VERTICAL	VERTICAL

Test Data		
	Design	Actual
CFM	1500	1518
Fan RPM	-	1085
Fan Rotation	-	CCW
Motor RPM	-	1085
RL Voltage	-	121
RL Amperage	-	7.2

Motor Data		
	Design	Actual
Motor MFG	-	VARI-GREEN
Frame	-	N/L
Horsepower	1.5	1
Motor Rpm	1725	1750
Phase	3	1
Voltage (rated)	208	115
Amperage (rated)	-	11.5
Service Factor	-	N/L

Completed By: Ben Searles on 05/02/2025

National TAB

Project: 04-28-25 CULVERS ROCKMART, GA

System/Unit: FAN - Exhaust



Asset: KEF2

AREA:FRYER HOOD FAN

Unit Data		
	Design	Actual
MFG	ACCUREX	ACCUREX
Model Num	XRUB-141-7	XCUE-140-10-VG
Serial Num	-	26137927
Type	UPBLAST	UPBLAST
Configuration	VERTICAL	VERTICAL

Test Data		
	Design	Actual
CFM	1500	1499
Fan RPM	-	1138
Fan Rotation	-	CCW
Motor RPM	-	1138
RL Voltage	-	120
RL Amperage	-	7.8

Motor Data		
	Design	Actual
Motor MFG	-	VARI-GREEN
Frame	-	N/L
Horsepower	.75	1
Motor Rpm	1725	1750
Phase	3	1
Voltage (rated)	208	115
Amperage (rated)	-	11.5
Service Factor	-	N/L

Completed By: Ben Searles on 05/02/2025

National TAB

Project: 04-28-25 CULVERS ROCKMART, GA

System/Unit: FAN - Exhaust



Asset: KEF3

AREA: KITCHEN HOOD FAN

Unit Data		
	Design	Actual
MFG	ACCUREX	ACCUREX
Model Num	XRED-090-D	XRED-090-D
Type	DOWNBLAST	DOWNBLAST
Configuration	VERTICAL	VERTICAL

Test Data		
	Design	Actual
CFM	350	317
Fan Rotation	-	CCW
RL Voltage	-	[1]
RL Amperage	-	[1]

Motor Data		
	Design	Actual
Motor MFG	-	MCMILLAN ELECTRIC
Frame	-	N/L
Horsepower	.15	1/8
Motor Rpm	1550	1550
Phase	1	1
Voltage (rated)	120	115
Amperage (rated)	-	2.6
Service Factor	-	N/L

Completed By: Ben Searles on 05/02/2025

Notes:
 [1] LIGHTSWITCH STYLE CONTROLLER - UNABLE TO READ VOLTS AND AMPS

Written By: Ben Searles on 05/02/2025

National TAB

Project: 04-28-25 CULVERS ROCKMART, GA

System/Unit: Kitchen Hood Type I



Asset: HD1

AREA:GRIDDLE HOOD

Unit Data		
	Design	Actual
MFG	CAPTIVAIRE	CAPTIVAIRE
Model Num	XGEP-64-S	XGEP-64-S
Job / Serial Num	-	26135583
Type	TYPE I - LOW PROXIMITY	TYPE I - LOW PROXIMITY
Hood length	64"	64"
Hood Width	23"	23"

Test Data Exhaust		
	Design	Actual
Filter Type	X-TRACTOR SPARK	X-TRACTOR SPARK
Filter Size 1	16X16	16X16
Filter Qty 1	4	4
Filter AK factor size 1	1.53	1.53
Filter Total AK Area	6.12	6.12
Filter1 FPM	-	273
Filter2 FPM	-	215
Filter3 FPM	-	239
Filter4 FPM	-	265
Filter Ave FPM(corr)	-	248
CFM	1500	1518

Cooking Equipment	
	Actual
Item 1	GRIDDLE

Completed By: Ben Searles on 05/02/2025

National TAB

Project: 04-28-25 CULVERS ROCKMART, GA

System/Unit: Kitchen Hood Type I



Asset: HD2

AREA:FRYER HOOD

Unit Data		
	Design	Actual
MFG	CAPTIVAIRE	CAPTIVAIRE
Model Num	XXEP-83-S	XXEP-83-S
Job / Serial Num	-	26135578
Type	TYPE I - LOW PROXIMITY	TYPE I - LOW PROXIMITY
Hood length	83"	83"
Hood Width	23"	23"

Test Data Exhaust		
	Design	Actual
Filter Type	X-TRACTOR SPARK	X-TRACTOR SPARK
Filter Size 1	16X16	16X16
Filter Qty 1	5	5
Filter AK factor size 1	1.53	1.53
Filter Total AK Area	7.65	7.65
Filter1 FPM	-	209
Filter2 FPM	-	191
Filter3 FPM	-	192
Filter4 FPM	-	189
Filter5 FPM	-	201
Filter Ave FPM(corr)	-	196
CFM	1500	1499

Cooking Equipment	
	Actual
Item 1	OPEN FRYER
Item 2	OPEN FRYER

Completed By: Ben Searles on 05/02/2025

National TAB

Project: 04-28-25 CULVERS ROCKMART, GA

System/Unit: Kitchen Hood Type II



Asset: HD(Type2)1

AREA:HOOD #3

Unit Data		
	Design	Actual
MFG	ACCUREX	ACCUREX
Model Num	XD3-42-S	XD3-42-S
Type	TYPE II - CANOPY	TYPE II - CANOPY
Hood length	42"	42"
Hood Width	42"	42"

Test Data		
	Design	Actual
Exhaust VEL(corr)	-	932
Exhaust CFM	350	317

Cooking Equipment	
	Actual
Item 1	DISHWASHER

Completed By: Ben Searles on 05/02/2025