

Report By:

National TAB  
1329 E. KEMPER ROAD  
SUITE 4210  
CINCINNATI, OH 45246



**Report: HVAC Findings for CFA 5073**

**Function: Test, Adjust, & Balance**

**Date: 08/07/2023**

# PROJECT

**08-14-23 CHICK-FIL-A #05073 - GRAND  
RAPIDS, MI (ALPINE AVE (MI) FSU) NEW  
STORE**

3461 ALPINE AVE

GRAND RAPIDS, MI

## Client

Chick-fil-A (CFA)

5200 BUFFINGTON ROAD

ATLANTA, GA 30349-2998

# National TAB

Project: 08-14-23 CHICK-FIL-A #05073 - GRAND RAPIDS, MI (ALPINE AVE (MI) FSU) NEW STORE

## Table Of Contents

Section	Page #
Issue Data	3

## Issue List

- CRITICAL: Grease duct elbows
- CRITICAL: Incorrect Turning Vanes Installed
- NON-CRITICAL(NOTE): AC-3 Cooling
- NON-CRITICAL: AC Condensate Lines
- NON-CRITICAL: G2 Dripguards
- NON-CRITICAL: Grease duct is not supported
- NON-CRITICAL: Hood 2 prepunch
- REVIEW + RECTIFY: Turning Vanes installed in AC Returns
- REVIEW AND RECTIFY: Grease duct clean out
- REVIEW+RECTIFY: AC-1 Economizer
- REVIEW+RECTIFY: Employee RR exhaust grille
- REVIEW+RECTIFY: Fresh Air Tempering Kits
- REVIEW+RECTIFY: Incorrect Air Devices
- REVIEW+RECTIFY: RR Exhaust drop insulation

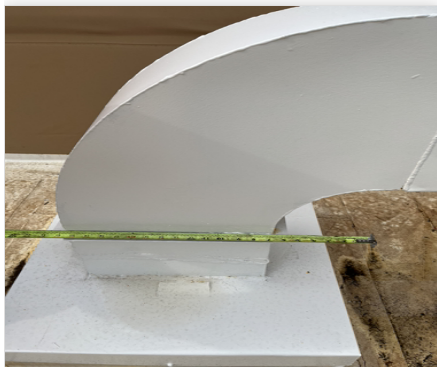


**08-14-23 CHICK-FIL-A #05073 - GRAND RAPIDS, MI (ALPINE AVE (MI) FSU) NEW STORE**

**Project Issue Information**

**Issue Name :** CRITICAL: Grease duct elbows  
**Description :** Not all elbows are of long radius type. See M301 Kitchen Hood System Note 5. Short radius elbows add restriction and can impact unit performance.  
**Created By :** National TAB                      **Assigned To :** National TAB - Tyler Youells  
**Status :** Open  
**Originated Date :** 08/07/2023 - Gabe Merk - National TAB

Project Issue File Details



**Greaseductelbow  
08/07/2023**

**Air flow within hoods are at an acceptable range. They can keep them.**



**08-14-23 CHICK-FIL-A #05073 - GRAND RAPIDS, MI (ALPINE AVE (MI) FSU) NEW STORE**

**Project Issue Information**

**Issue Name :** CRITICAL: Incorrect Turning Vanes Installed  
**Description :** Incorrect double thickness turning vanes installed in supply of all AC units. Single thickness turning vanes are to be used. See M401 Detail 5  
Incorrect turning vanes add restriction and can hurt unit performance.  
**Created By :** National TAB                      **Assigned To :** National TAB - Tyler Youells  
**Status :** Open  
**Originated Date :** 08/07/2023 - Gabe Merk - National TAB

Project Issue File Details



**Incorrectturningvanes..**  
**08/07/2023**

Replace with single thickness turning vanes per Detail 5 on M401.



**08-14-23 CHICK-FIL-A #05073 - GRAND RAPIDS, MI (ALPINE AVE (MI) FSU) NEW STORE**

**Project Issue Information**

**Issue Name :** NON-CRITICAL(NOTE): AC-3 Cooling  
**Description :** Ac-3 has a reversing valve issue that is preventing the unit from cooling properly. TRANE was on-site Tuesday 8/8 diagnosing. Ac3 thermostats as been set to system off.  
**Created By :** National TAB                      **Assigned To :** National TAB - Tyler Youells  
**Status :** Open  
**Originated Date :** 08/09/2023 - Tyler Youells - National TAB

Replace the broken part.



**08-14-23 CHICK-FIL-A #05073 - GRAND RAPIDS, MI (ALPINE AVE (MI) FSU) NEW STORE**

**Project Issue Information**

**Issue Name :** NON-CRITICAL: AC Condensate Lines  
**Description :** All AC Condensate lines missing clean out. AC1 has no 2" drop after trap. See applicable Plumbing drawing  
**Created By :** National TAB                      **Assigned To :** National TAB - Tyler Youells  
**Status :** Open  
**Originated Date :** 08/07/2023 - Gabe Merk - National TAB

Project Issue File Details



Fix condensate trap to match detail 2 on P250

ACCondensatetrp  
08/07/2023

Project Issue Response Details

- **08/10/2023 National TAB - Tyler Youells**
  - Note AC-4 condensate is also not draining properly. The drain line was piped up the slope of the roof and water is leaking out of the leaving side union of the condensate trap.



**08-14-23 CHICK-FIL-A #05073 - GRAND RAPIDS, MI (ALPINE AVE (MI) FSU) NEW STORE**

**Project Issue Information**

**Issue Name :** NON-CRITICAL: G2 Dripguards  
**Description :** EF1 and EF2 do not have the drip guards nor pvc drains. See M401 Detail 3  
**Created By :** National TAB                      **Assigned To :** National TAB - Tyler Youells  
**Status :** Open  
**Originated Date :** 08/07/2023 - Gabe Merk - National TAB

Project Issue File Details



EF1greaseduct  
08/07/2023

Install G2 grip guard per  
Detail 3 M401.



**08-14-23 CHICK-FIL-A #05073 - GRAND RAPIDS, MI (ALPINE AVE (MI) FSU) NEW STORE**

**Project Issue Information**

**Issue Name :** NON-CRITICAL: Grease duct is not supported  
**Description :** Grease ducts are not supported at duct drops. See M401 Detail 3  
KeyNote 2  
**Created By :** National TAB **Assigned To :** National TAB - Tyler Youells  
**Status :** Open  
**Originated Date :** 08/07/2023 - Gabe Merk - National TAB

Project Issue Response Details

- **08/07/2023 National TAB - Gabe Merk**

- Added picture



Unsupportedgreaseductatdr  
op  
08/07/2023

Provide support per detail.



**08-14-23 CHICK-FIL-A #05073 - GRAND RAPIDS, MI (ALPINE AVE (MI) FSU) NEW STORE**

**Project Issue Information**

**Issue Name :** NON-CRITICAL: Hood 2 prepunch  
**Description :** Left side of hood 2 does not have screws securing it in the pre punched location.  
**Created By :** National TAB                      **Assigned To :** National TAB - Tyler Youells  
**Status :** Open  
**Originated Date :** 08/07/2023 - Gabe Merk - National TAB

Install screws

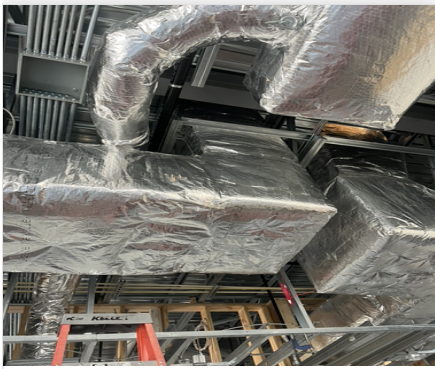


**08-14-23 CHICK-FIL-A #05073 - GRAND RAPIDS, MI (ALPINE AVE (MI) FSU) NEW STORE**

**Project Issue Information**

**Issue Name :** REVIEW + RECTIFY: Turning Vanes installed in AC Returns  
**Description :** Could not gain access but was informed turning vanes are installed in the returns of all AC units. Turning vanes are only to be installed in Supply ductwork. See M-901, 2.02, P.  
**Created By :** National TAB                      **Assigned To :** National TAB - Michael McDonnell  
**Status :** Open  
**Originated Date :** 06/20/2023 - Michael McDonnell - National TAB

Project Issue File Details



Leave them.

Turningvanereturn.jpe..  
06/20/2023

Project Issue Response Details

- **08/07/2023**    **National TAB - Tyler Youells**
  - Turnings Vanes remain in the returns upon return TAB trip.

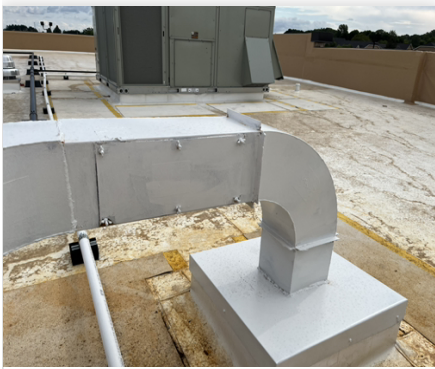


**08-14-23 CHICK-FIL-A #05073 - GRAND RAPIDS, MI (ALPINE AVE (MI) FSU) NEW STORE**

**Project Issue Information**

**Issue Name :** REVIEW AND RECTIFY: Grease duct clean out  
**Description :** Grease duct clean outs that are installed are incorrect. They are to have a 1 1/4" standoff flange. Downturn elbows are to have grease clean outs as well. See M250 Grease access door schedule. And Detail 1 for locations  
**Created By :** National TAB                      **Assigned To :** National TAB - Tyler Youells  
**Status :** Open  
**Originated Date :** 08/07/2023 - Gabe Merk - National TAB

Project Issue File Details



**Greaseductcleanout.jp..  
08/07/2023**

**Install access ports for grease duct.**

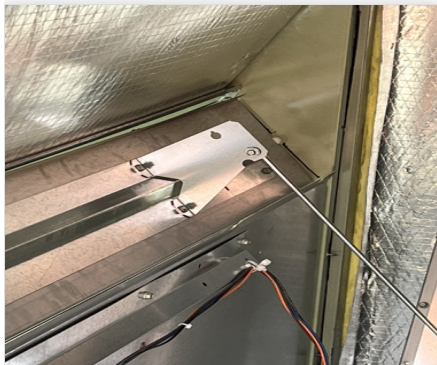


**08-14-23 CHICK-FIL-A #05073 - GRAND RAPIDS, MI (ALPINE AVE (MI) FSU) NEW STORE**

**Project Issue Information**

**Issue Name :** REVIEW+RECTIFY: AC-1 Economizer  
**Description :** Ac-1 economizer is not responding to change in commands after the return damper blockage was removed. MC found damper motor has failed and needs replacing. NTAB was able to balance and mark the damper manually. MC to set percentage based on marked position once fixed.  
**Created By :** National TAB                      **Assigned To :** National TAB - Tyler Youells  
**Status :** Open  
**Originated Date :** 08/09/2023 - Tyler Youells - National TAB

Project Issue File Details



**Markedposition**  
**08/09/2023**

**Fix economizer for AC-1**



**08-14-23 CHICK-FIL-A #05073 - GRAND RAPIDS, MI (ALPINE AVE (MI) FSU) NEW STORE**

**Project Issue Information**

**Issue Name :** REVIEW+RECTIFY: Employee RR exhaust grille  
**Description :** The employee restroom exhaust Grille was installed as a 4-way supply when it is specified to be perforated type return. See M401 Air device schedule for proper Terminal device type.  
**Created By :** National TAB                      **Assigned To :** National TAB - Tyler Youells  
**Status :** Open  
**Originated Date :** 08/09/2023 - Tyler Youells - National TAB

Project Issue File Details



**Incorrectexhaustgrill..**  
**08/09/2023**

replace supply diffuser with return grille from page 16.

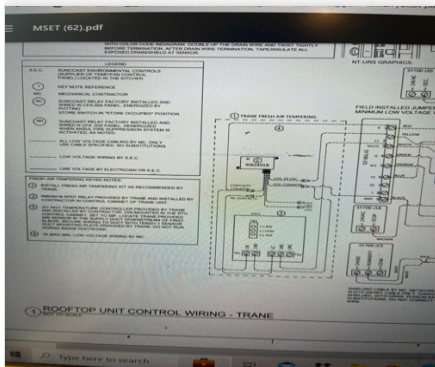


**08-14-23 CHICK-FIL-A #05073 - GRAND RAPIDS, MI (ALPINE AVE (MI) FSU) NEW STORE**

**Project Issue Information**

**Issue Name :** REVIEW+RECTIFY: Fresh Air Tempering Kits  
**Description :** All 4 AC units are to have fresh air tempering kits field installed. Kits are not installed or seem to be on-site. Recommend contacting TRANE. See: M-250 Gas fired Rtu schedule. And See M501 Detail 1 TRANE wiring  
**Created By :** National TAB                      **Assigned To :** National TAB - Tyler Youells  
**Status :** Open  
**Originated Date :** 08/09/2023 - Tyler Youells - National TAB

Project Issue File Details



**Freshairtemperingdeta..  
08/09/2023**

Contact Trane and install parts as needed.



**08-14-23 CHICK-FIL-A #05073 - GRAND RAPIDS, MI (ALPINE AVE (MI) FSU) NEW STORE**

**Project Issue Information**

**Issue Name :** REVIEW+RECTIFY: Incorrect Air Devices  
**Description :** Diffuser located in the Drywall soffits are incorrect type. Correct type is perforated lay in with 4 way deflectors. See M401 Air device schedule for proper Air device.  
**Created By :** National TAB                      **Assigned To :** National TAB - Tyler Youells  
**Status :** Open  
**Originated Date :** 08/09/2023 - Tyler Youells - National TAB

Project Issue File Details



**Soffit1**  
**08/09/2023**



**Soffit2**  
**08/09/2023**

Swap with 4 way in restroom from page 14.



**08-14-23 CHICK-FIL-A #05073 - GRAND RAPIDS, MI (ALPINE AVE (MI) FSU) NEW STORE**

**Project Issue Information**

**Issue Name :** REVIEW+RECTIFY: RR Exhaust drop insulation  
**Description :** Restroom exhaust drop is externally insulated and should be internally insulated. See M901 Section 2.02 Note J.  
**Created By :** National TAB                      **Assigned To :** National TAB - Tyler Youells  
**Status :** Open  
**Originated Date :** 08/07/2023 - Gabe Merk - National TAB

Project Issue File Details



**RRExhaustdrop  
08/07/2023**

Project Issue Response Details

- **08/10/2023 National TAB - Tyler Youells**
  - Recommend reviewing with Engineer of Record to see if external insulation would be permissible.

The external insulation is acceptable.