

**Report By:**

National TAB  
1329 E. KEMPER ROAD  
SUITE 4210  
CINCINNATI, OH 45246



**Report: TEST**

**Function: Test, Adjust, & Balance**

**Date: 06/10/2025**

**Completed By: National TAB**

# **PROJECT**

## **Tri-State Fabricators Eval (Batavia, OH)**

1146 Ferris Road

Amelia, OH 45102

### **Client**

BACHMAN'S HVAC SOLUTIONS

4058 CLOUGH WOODS DR.

BATAVIA, OH

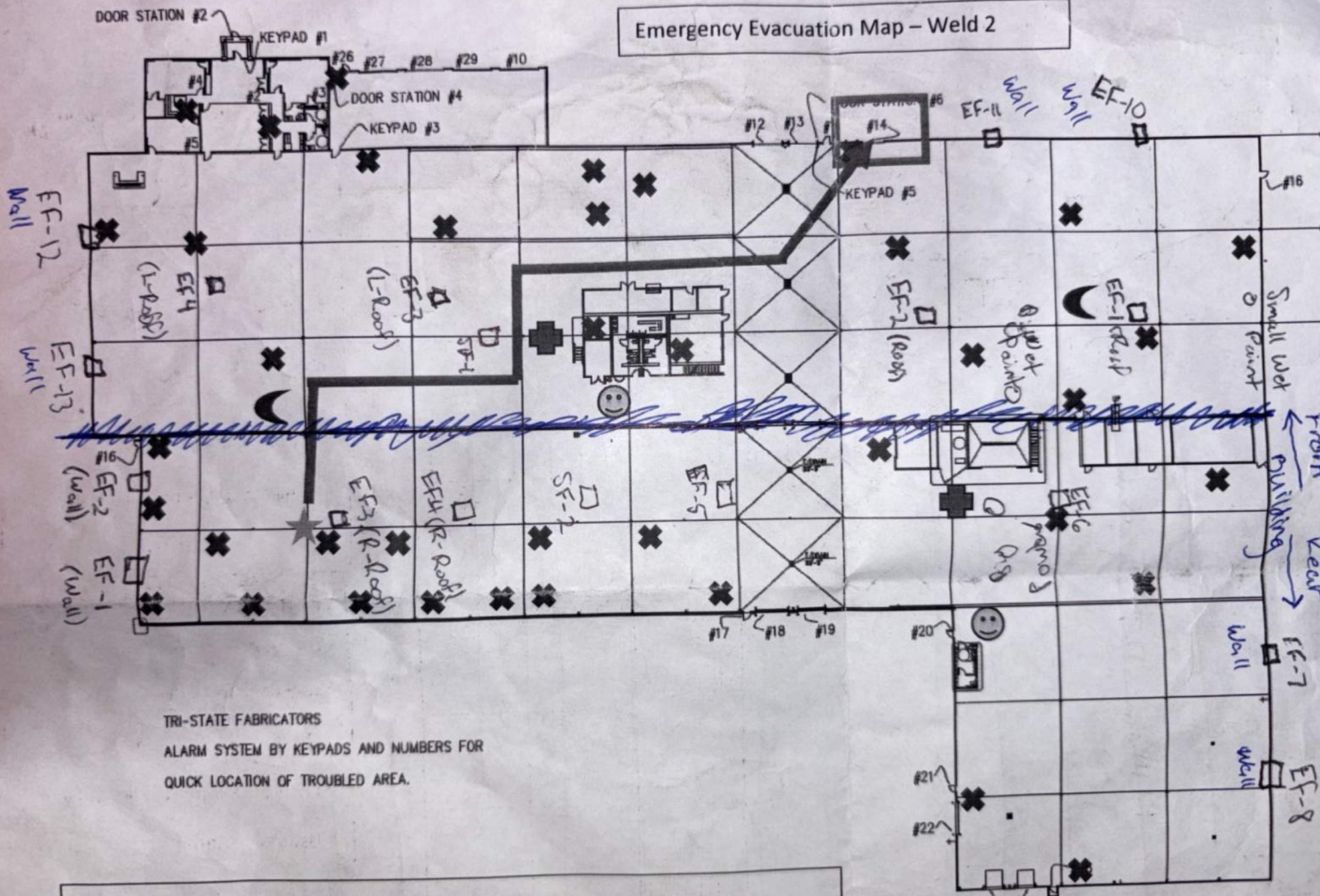
# National TAB

Project: Tri-State Fabricators Eval (Batavia, OH)

## Table Of Contents

Section	Page #
GRD Layout	3
FAN - Exhaust	4

# Emergency Evacuation Map – Weld 2



TRI-STATE FABRICATORS  
 ALARM SYSTEM BY KEYPADS AND NUMBERS FOR  
 QUICK LOCATION OF TROUBLED AREA.

## Legend

# National TAB

Project: Tri-State Fabricators Eval (Batavia, OH)

System/Unit: FAN - Exhaust



Asset: EF-BIGPAINTBOOTH-15

AREA:

Test Data		
	Design	Actual
CFM	-	4710

Completed By: Nick Payne on 06/06/2025

Notes:  
30" duct, 960 ft/m

Written By: Nick Payne on 06/06/2025

# National TAB

Project: Tri-State Fabricators Eval (Batavia, OH)

System/Unit: FAN - Exhaust



Asset: EF-BIGPOWDER-14

AREA:

Test Data		
	Design	Actual
CFM	-	851

Completed By: Nick Payne on 06/06/2025

Notes:  
8" duct, 2438ft/m

Written By: Nick Payne on 06/06/2025

# National TAB

Project: Tri-State Fabricators Eval (Batavia, OH)

System/Unit: FAN - Exhaust



Asset: EF-FRONT BUILD ROOF-1

AREA: REAR WHSE

Test Data		
	Design	Actual
CFM	-	7740

Completed By: Nick Payne on 06/06/2025

Notes:  
36"x36" duct, 860 ft/m

Written By: Nick Payne on 06/06/2025

# National TAB

Project: Tri-State Fabricators Eval (Batavia, OH)

System/Unit: FAN - Exhaust



Asset: EF-FRONT BUILD ROOF-2

AREA: REAR WHSE

Test Data		
	Design	Actual
CFM	-	8028

Completed By: Nick Payne on 06/06/2025

Notes:  
36"x36" duct, 892 ft/m

Written By: Nick Payne on 06/06/2025

# National TAB

Project: Tri-State Fabricators Eval (Batavia, OH)

System/Unit: FAN - Exhaust



Asset: EF-FRONT BUILD ROOF-3

AREA:FRONT

Test Data		
	Design	Actual
CFM	-	8262

Completed By: Nick Payne on 06/06/2025

Notes:  
36"x36" duct, 918 ft/m

Written By: Nick Payne on 06/06/2025

# National TAB

Project: Tri-State Fabricators Eval (Batavia, OH)

System/Unit: FAN - Exhaust



Asset: EF-FRONT BUILD WALL-10

AREA:

Test Data		
	Design	Actual
CFM	-	1026

Completed By: Nick Payne on 06/06/2025

Notes:  
36"x36" duct, 114ft/m  
Has slipping / loose belt

Written By: Nick Payne on 06/06/2025

# National TAB

Project: Tri-State Fabricators Eval (Batavia, OH)

System/Unit: FAN - Exhaust



Asset: EF-FRONT BUILD WALL-11

AREA:

Test Data		
	Design	Actual
CFM	-	0

Completed By: Nick Payne on 06/06/2025

Notes:  
Does not run.

Written By: Nick Payne on 06/06/2025

# National TAB

Project: Tri-State Fabricators Eval (Batavia, OH)

System/Unit: FAN - Exhaust



Asset: EF-FRONT BUILD WALL-12

AREA:FRONT

Test Data		
	Design	Actual
CFM	-	2356

Completed By: Nick Payne on 06/06/2025

Notes:  
38"x38" sidewall, 235 ft/m  
Loose / slipping belt

Written By: Nick Payne on 06/06/2025

# National TAB

Project: Tri-State Fabricators Eval (Batavia, OH)

System/Unit: FAN - Exhaust



Asset: EF-FRONT BUILD WALL-13

AREA:FRONT

Test Data		
	Design	Actual
CFM	-	8603

Completed By: Nick Payne on 06/06/2025

Notes:  
38"x38" duct, 858 ft/m

Written By: Nick Payne on 06/06/2025

# National TAB

Project: Tri-State Fabricators Eval (Batavia, OH)

System/Unit: FAN - Exhaust



Asset: EF-REAR BUILD ROOF-3

AREA:FRONT WHSE

Test Data		
	Design	Actual
CFM	-	11970

Completed By: Nick Payne on 06/06/2025

Notes:  
36"x36" duct, 1330 ft/m

Written By: Nick Payne on 06/06/2025

# National TAB

Project: Tri-State Fabricators Eval (Batavia, OH)

System/Unit: FAN - Exhaust



Asset: EF-REAR BUILD ROOF-4

AREA: REAR OVEN

Test Data		
	Design	Actual
CFM	-	11826

Completed By: Nick Payne on 06/06/2025

Notes:  
36"x36" duct, 1314 ft/m

Written By: Nick Payne on 06/06/2025

# National TAB

Project: Tri-State Fabricators Eval (Batavia, OH)

System/Unit: FAN - Exhaust



Asset: EF-REAR BUILD ROOF-5

AREA:REAR

Test Data		
	Design	Actual
CFM	-	12726

Completed By: Nick Payne on 06/06/2025

Notes:  
36"x36" duct, 1414 ft/m

Written By: Nick Payne on 06/06/2025

# National TAB

Project: Tri-State Fabricators Eval (Batavia, OH)

System/Unit: FAN - Exhaust



Asset: EF-REAR BUILD ROOF-6

AREA:REAR

Test Data		
	Design	Actual
CFM	-	13014

Completed By: Nick Payne on 06/06/2025

Notes:  
36"x36" duct, 1446 ft/m

Written By: Nick Payne on 06/06/2025

# National TAB

Project: Tri-State Fabricators Eval (Batavia, OH)

System/Unit: FAN - Exhaust



Asset: EF-REAR BUILD WALL-1

AREA:FRONT WHSE

Test Data		
	Design	Actual
CFM	-	8954

Completed By: Nick Payne on 06/06/2025

Notes:  
38"x38" sidewall, 893 ft/m

Written By: Nick Payne on 06/06/2025

# National TAB

Project: Tri-State Fabricators Eval (Batavia, OH)

System/Unit: FAN - Exhaust



Asset: EF-REAR BUILD WALL-2

AREA:FRONT

Test Data		
	Design	Actual
CFM	-	1504

Completed By: Nick Payne on 06/06/2025

Notes:

38"x38" sidewall, 150 ft/m.

Motor has 2 groove pulley, fan has single groove.

Additionally, 1 belt is installed and is loose /slipping.

Written By: Nick Payne on 06/06/2025

# National TAB

Project: Tri-State Fabricators Eval (Batavia, OH)

System/Unit: FAN - Exhaust



Asset: EF-REAR BUILD WALL-7

AREA:REAR

Test Data		
	Design	Actual
CFM	-	1805

Completed By: Nick Payne on 06/06/2025

Notes:  
38"x38" sidewall, 180 ft/m  
Belt is loose/slipping.

Written By: Nick Payne on 06/06/2025

# National TAB

Project: Tri-State Fabricators Eval (Batavia, OH)

System/Unit: FAN - Exhaust



Asset: EF-REAR BUILD WALL-8

AREA:REAR

Test Data		
	Design	Actual
CFM	-	2226

Completed By: Nick Payne on 06/06/2025

Notes:  
38"x38" sidewall, 222 ft/m  
Belt is loose/ slipping.

Written By: Nick Payne on 06/06/2025

# National TAB

Project: Tri-State Fabricators Eval (Batavia, OH)

System/Unit: FAN - Exhaust



Asset: EF-SMALLPAINTBOOTH-16

AREA:

Test Data		
	Design	Actual
CFM	-	7145

Completed By: Nick Payne on 06/06/2025

Notes:  
32" duct, 1280 ft/min

Written By: Nick Payne on 06/06/2025