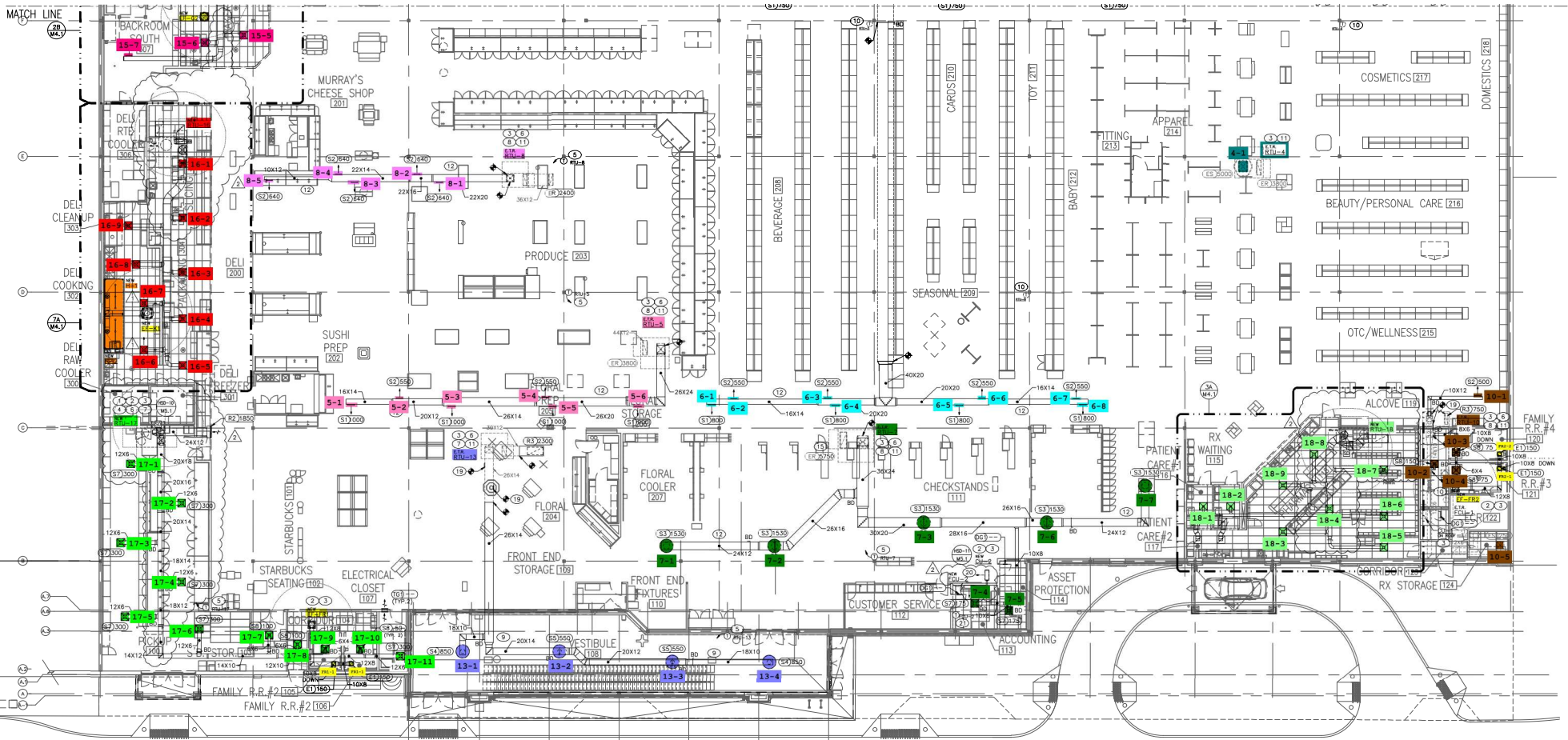
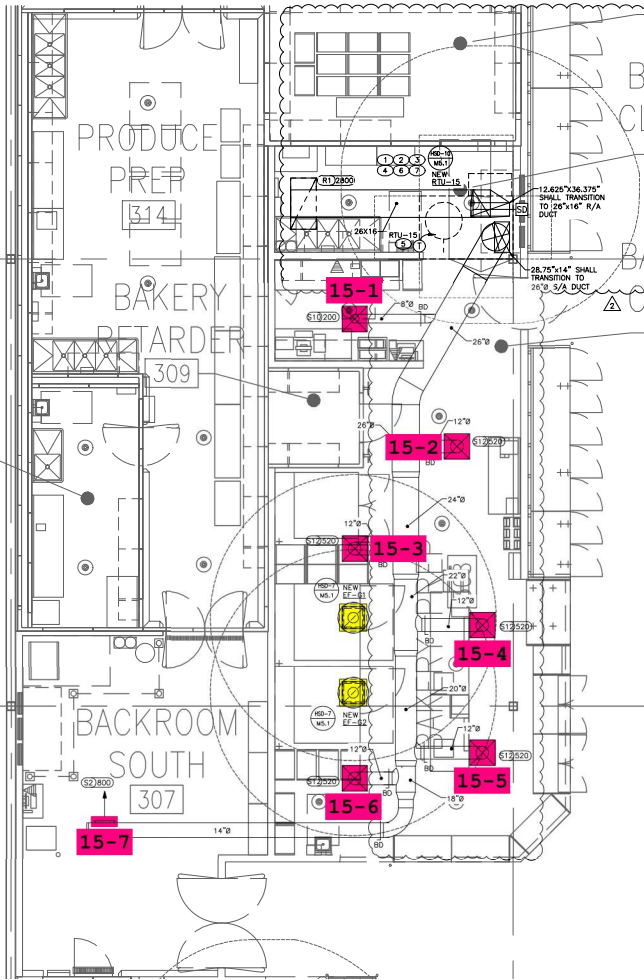


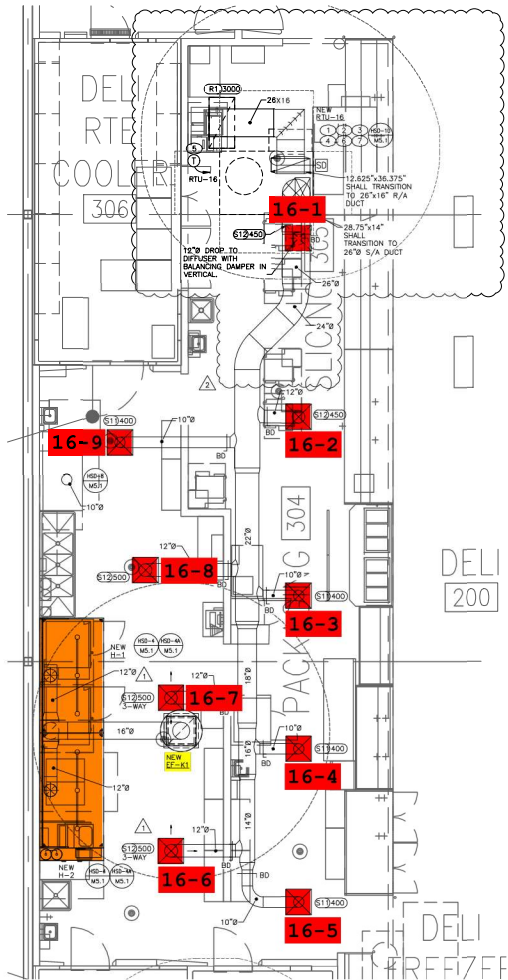
6A HVAC RENOVATION PLAN - REAR  
 SCALE: 1/32" = 1'-0"  
 NORTH



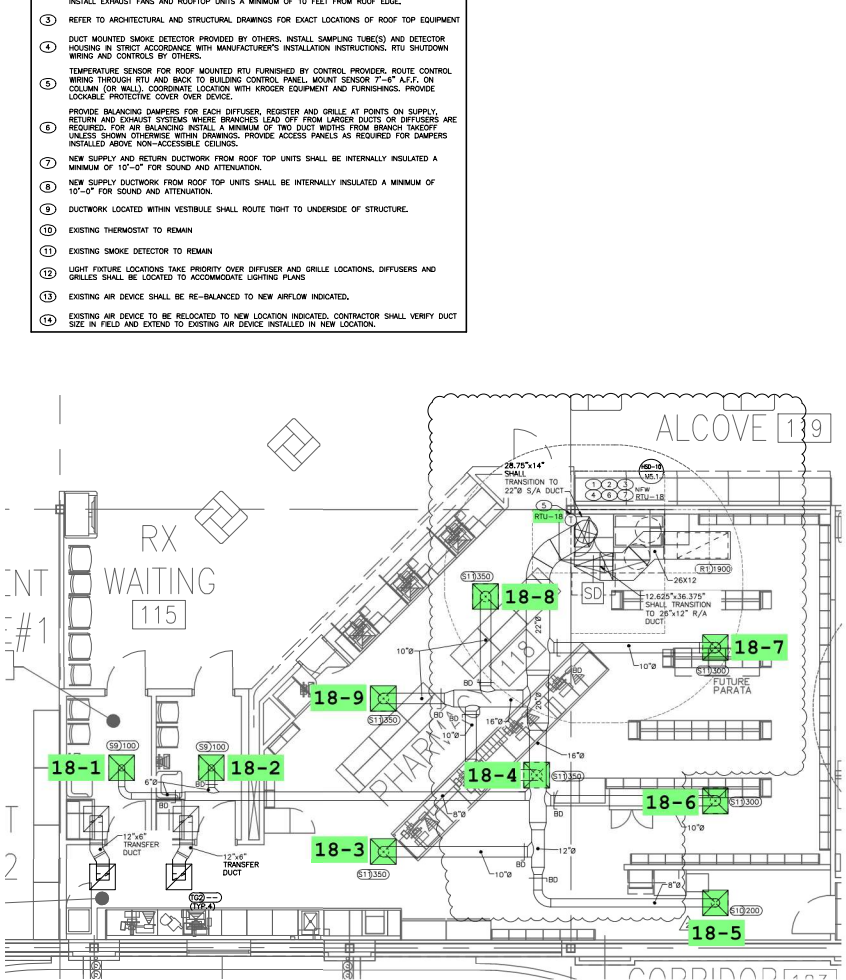
6A HVAC RENOVATION PLAN - FRONT  
 SCALE: 3/32" = 1'-0"



7A BAKERY - ENLARGED HVAC PLAN  
 SCALE: 1/4"=1'-0"

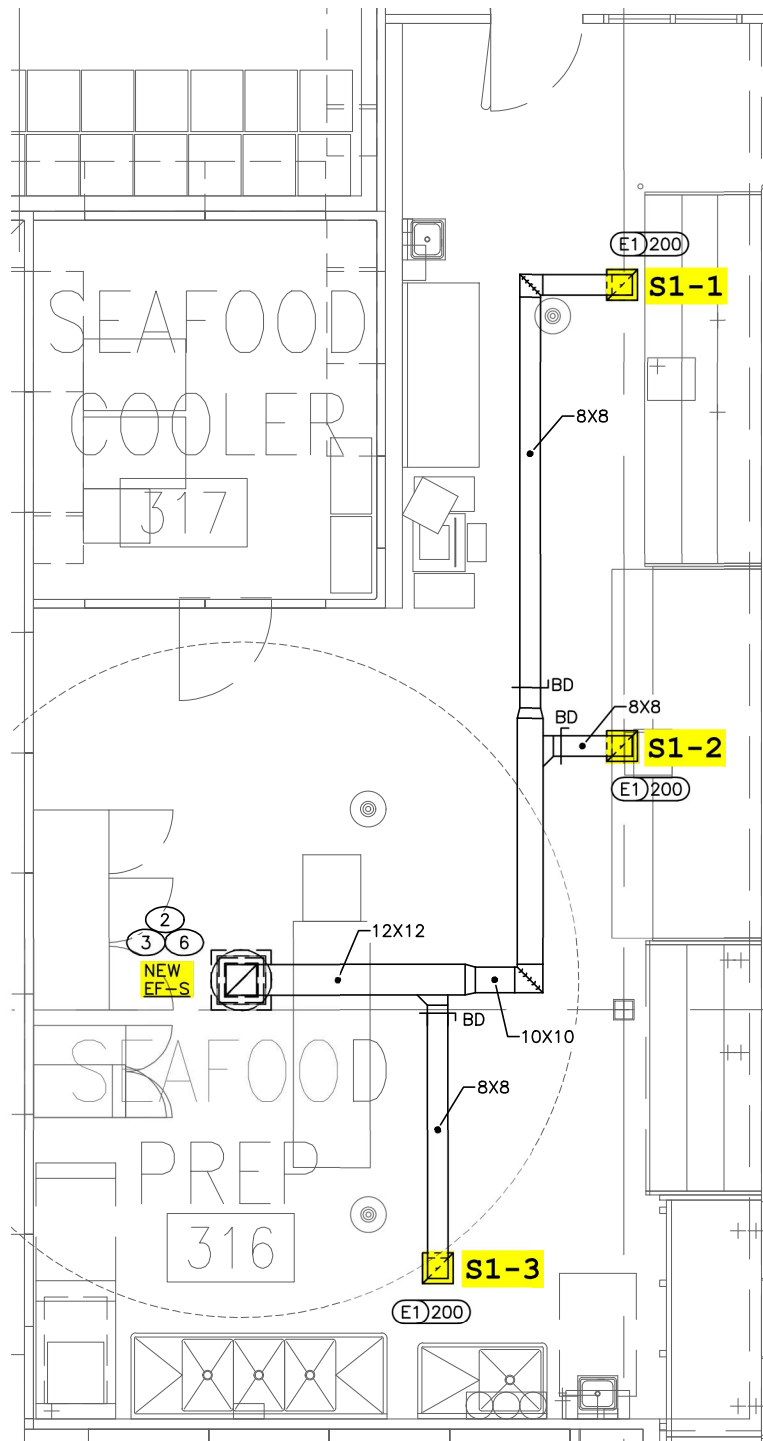


5A DELI - ENLARGED HVAC PLAN  
 SCALE: 1/4"=1'-0"



3A PHARMACY - ENLARGED HVAC PLAN  
 SCALE: 1/4"=1'-0"

- 2. FLEED AND EXHAUST FANS A MINIMUM OF 10 FEET FROM OUTSIDE AIR INTAKE OF FLUOR 10" UNITS. INSTALL EXHAUST FANS AND ROOFTOP UNITS A MINIMUM OF 10 FEET FROM ROOF EDGE.
- 3. REFER TO ARCHITECTURAL AND STRUCTURAL DRAWINGS FOR EXACT LOCATIONS OF ROOF TOP EQUIPMENT.
- 4. DUCT MOUNTED SMOKE DETECTOR PROVIDED BY OTHERS. INSTALL SAMPLING TUBE(S) AND DETECTOR HOUSING IN STRICT ACCORDANCE WITH MANUFACTURER'S INSTALLATION INSTRUCTIONS. RTU SHUTDOWN WIRING AND CONTROLS BY OTHERS.
- 5. TEMPERATURE SENSOR FOR ROOF MOUNTED RTU FURNISHED BY CONTROL PROVIDER. ROUTE CONTROL WIRING THROUGH RTU AND BACK TO BUILDING CONTROL PANEL. MOUNT SENSOR 7'-6" A.F.F. ON COLLAR (OR WALL). COORDINATE LOCATION WITH HOOKER EQUIPMENT AND FURNISHINGS. PROVIDE LOCKABLE PROTECTIVE COVER OVER DEVICE.
- 6. PROVIDE BALANCING DAMPERS FOR EACH DIFFUSER, REGISTER AND GRILLE AT POINTS ON SUPPLY RETURN AND EXHAUST SYSTEMS WHERE BRANCHES LEAD OFF FROM LARGER DUCTS OR DIFFUSERS ARE REQUIRED. FOR AIR BALANCING INSTALL A MINIMUM OF TWO DUCT WIDTHS FROM BRANCH TAKEOFF UNLESS SHOWN OTHERWISE WITHIN DRAWINGS. PROVIDE ACCESS PANELS AS REQUIRED FOR DAMPERS INSTALLED ABOVE NON-ACCESSIBLE CEILINGS.
- 7. NEW SUPPLY AND RETURN DUCTWORK FROM ROOF TOP UNITS SHALL BE INTERNALLY INSULATED A MINIMUM OF 10'-0" FOR SOUND AND ATTENUATION.
- 8. NEW SUPPLY DUCTWORK FROM ROOF TOP UNITS SHALL BE INTERNALLY INSULATED A MINIMUM OF 10'-0" FOR SOUND AND ATTENUATION.
- 9. DUCTWORK LOCATED WITHIN VESTIBULE SHALL ROUTE TIGHT TO UNDERSIDE OF STRUCTURE.
- 10. EXISTING THERMOSTAT TO REMAIN
- 11. EXISTING SMOKE DETECTOR TO REMAIN
- 12. LIGHT FIXTURE LOCATIONS TAKE PRIORITY OVER DIFFUSER AND GRILLE LOCATIONS. DIFFUSERS AND GRILLES SHALL BE LOCATED TO ACCOMMODATE LIGHTING PLANS
- 13. EXISTING AIR DEVICE SHALL BE RE-BALANCED TO NEW AIRFLOW INDICATED.
- 14. EXISTING AIR DEVICE TO BE RELOCATED TO NEW LOCATION INDICATED. CONTRACTOR SHALL VERIFY DUCT SIZE IN FIELD AND EXTEND TO EXISTING AIR DEVICE INSTALLED IN NEW LOCATION.



7E SEAFOOD PREP – ENLARGED HVAC PLAN

