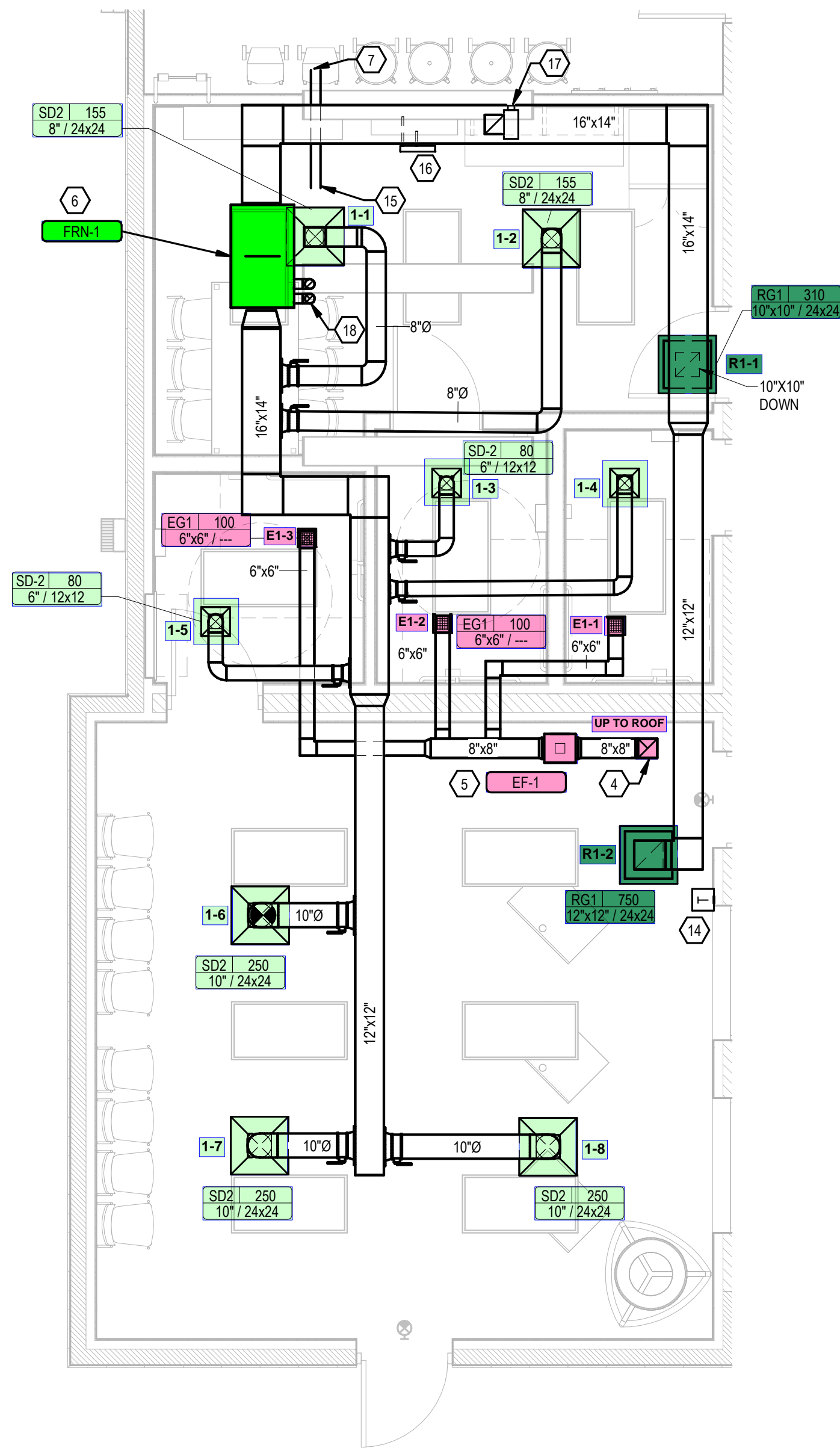


M-Engineering
 750 Brookside Blvd.
 Westerville, Ohio 43081
 phone: 614.839.4639
 fax: 614.839.2222
 www.mengineering.us.com

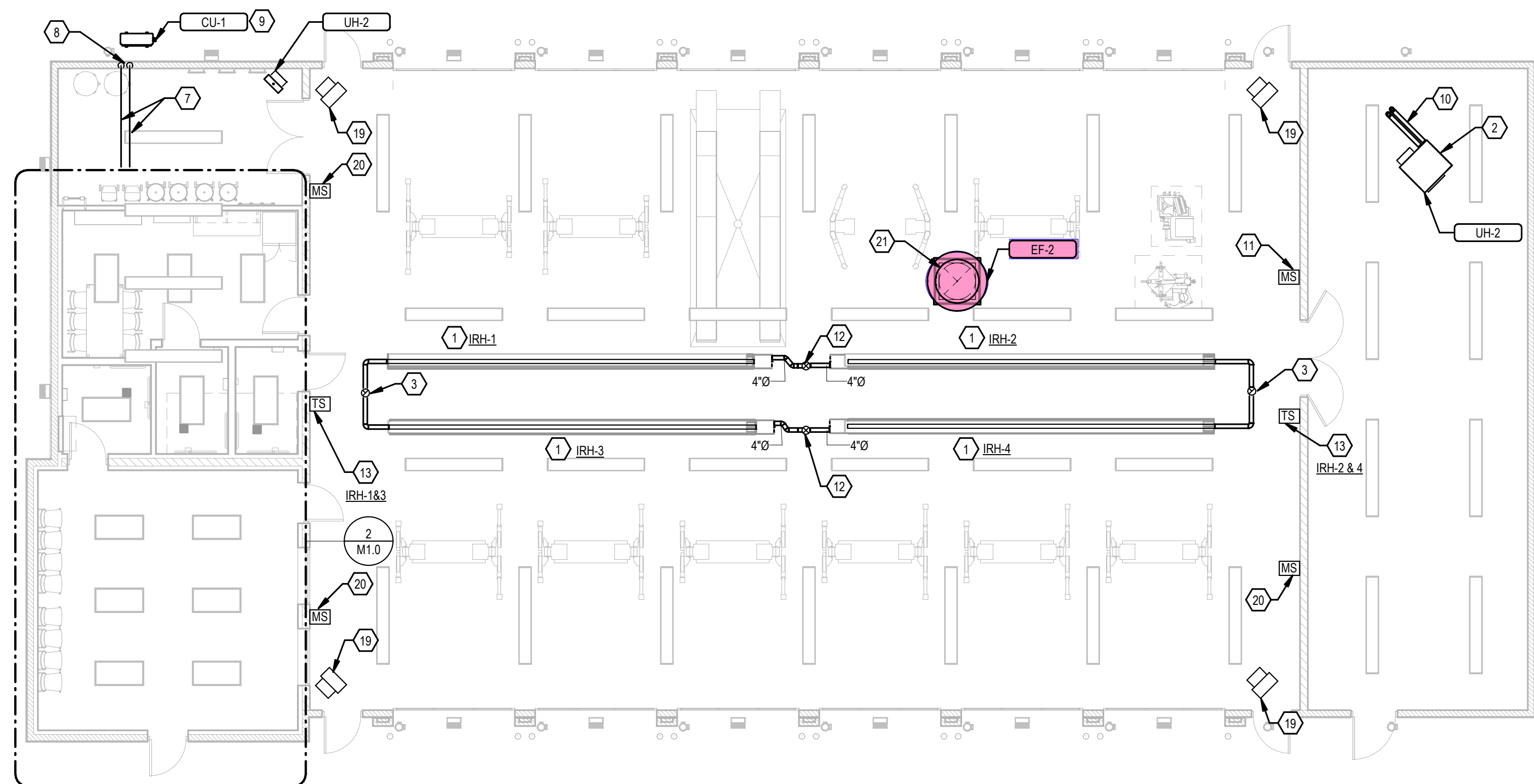


CODED NOTES

- SUSPEND THE RADIANT HEATER WITH STANDARD REFLECTOR FROM THE ROOF STRUCTURE ABOVE. THE MECHANICAL CONTRACTOR SHALL PROVIDE ALL ADDITIONAL SUPPORT STEEL THAT IS REQUIRED TO SUSPEND THE HEATING UNIT. DIRECT REFLECTOR AT 45 DEGREE ANGLE TOWARD OVERHEAD DOOR. PROVIDE AND INSTALL HANGERS AND CLIPS FOR RADIANT HEATER AND SHIELD AT EVERY 36" ON CENTER MAXIMUM.
- SUSPEND THE UNIT GAS-FIRED HEATER WITH INTEGRAL THERMOSTAT FROM THE ROOF STRUCTURE ABOVE. THE MECHANICAL CONTRACTOR SHALL PROVIDE ALL ADDITIONAL SUPPORT STEEL THAT IS REQUIRED TO SUSPEND THE UNIT HEATER UNIT.
- EXTEND 8" TYPE B FLUE THROUGH ROOF TO ROOF CAP PER MANUFACTURER RECOMMENDATION. INSTALL FLUE PER RADIANT HEATER MANUFACTURER'S INSTALLATION INSTRUCTION.
- EXTEND EXHAUST DUCT THROUGH ROOF TO ROOF CAP AND TRANSITION AS REQUIRED.**
- SUPPORT INLINE EXHAUST FAN FROM THE ROOF STRUCTURE WITH HANGING RODS VIBRATION ISOLATORS.
- HORIZONTAL GAS-FIRED FURNACE WITH DX COOLING EVAPORATOR COIL TO BE LOCATED ON EQUIPMENT PLATFORM. UNIT TO BE SUPPORTED FROM OVERHEAD STRUCTURAL MEMBERS WITH HANGING RODS AND VIBRATION ISOLATORS.
- ROUTE REFRIGERANT LINES FROM AIR COOLED CONDENSING UNIT TO HORIZONTAL GAS-FIRED FURNACE. SIZE REFRIGERANT LINES PER MANUFACTURER RECOMMENDATION AND SUPPORT LINES FROM ROOF STRUCTURES.
- EXTEND REFRIGERANT LINES DOWN WALL TO AIR COOLED CONDENSING UNIT SIZE REFRIGERANT LINES PER MANUFACTURER RECOMMENDATION.
- PROVIDE 4" HOUSEKEEPING FOR CONDENSING UNIT. CONTRACTOR COORDINATE LOCATION WITH LANDSCAPING PLAN. MECHANICAL CONTRACTOR MUST ENSURE ALL MANUFACTURER REQUIRED CLEARANCES PER MANUFACTURER RECOMMENDATION. ALL EXTERIOR PIPING LOCATED OUTSIDE THE BUILDING ENVELOPE TO BE LOCATED WITH AND EXTERIOR ENCLOSURE PER MANUFACTURER RECOMMENDATION.
- EXTEND 4" ROUND VENT AND COMBUSTION AIR VENT THROUGH ROOF TO REZOR VENT KIT.
- PROVIDE MANUAL MOTOR STARTER AT 48" A.F.F. FOR ROOF MOUNTED EXHAUST FAN (EF-2). COORDINATE LOCATION OF MANUAL MOTOR STARTER WITH OWNER PRIOR TO ROUGH-IN.
- EXTEND 8" COMBUSTION AIR THROUGH ROOF TO ROOF CAP.
- CONTRACTOR SHALL FURNISH AND INSTALL A THERMOSTAT. THERMOSTAT SHALL BE MOUNTED AT 48" AFF. COORDINATE LOCATION OF THERMOSTAT WITH OWNER PRIOR TO ROUGH-IN. THE ENTIRE CONTROL SYSTEM SHALL BE PROVIDED COMPLETE IN EVERY RESPECT BY THE MECHANICAL CONTRACTOR AND BE COMPATIBLE WITH INFRARED HEATER MANUFACTURER.
- WALL MOUNTED PROGRAMMABLE THERMOSTAT AT 48" A.F.F. FOR GAS-FIRED FURNACE. THERMOSTAT SHALL BE COMPATIBLE WITH FURNACE MANUFACTURER.
- EXTEND REFRIGERANT LINES TO GAS-FIRED FURNACE. SIZE REFRIGERANT LINES PER MANUFACTURER RECOMMENDATION.
- PROVIDE AND INSTALL MOTORIZED OUTSIDE AIR DAMPER IN OUTSIDE AIR DUCT. PROVIDE ULTRA-LOW LEAKAGE PARALLEL BLADE MODULATING DAMPER EQUAL TO HONEYWELL #D642, SIZED TO MATCH DUCT DIMENSIONS DUCT. SUPPLY LINKAGE TO MATCH FACTORY SUPPLIED AC TUATOR (HONEYWELL #M6415A). CONTROLS AND ACTUATORS FACTORY FURNISHED WITH FAN COIL UNIT. OUTSIDE AIR DAMPER TO BE INTERLOCK WITH FAN COIL UNIT CONTROLS SO DAMPER IS OPEN IN A MINIMUM SETTING (REFER TO MECHANICAL SCHEDULE ON SHEET M-200) AND OUTSIDE AIR DAMPER WILL BE CLOSED DURING UNOCCUPIED MODE
- PROVIDE AND INSTALL DUCT MOUNTED SMOKE DETECTOR IN THE RETURN AIR DUCTWORK IN ACCORDANCE WITH LOCAL MECHANICAL CODE. SMOKE DETECTOR WILL SHUT DOWN AIR HANDLING UNIT UP ON DETECTION OF SMOKE AND SIGNAL FIRE ALARM SYSTEM (IF APPLICABLE)
- EXTEND OUTSIDE AIR FLUE AND COMBUSTION FLUE FROM FURNACE THROUGH ROOF TO CARRIER CONCENTRIC VENT KIT. COORDINATE SIZE OF OUTSIDE AIR AND COMBUSTION AIR FLUES WITH FURNACE MANUFACTURER PRIOR TO ROUGH-IN
- GREENHECK MODEL IC-24-B3-JI AIR CIRCULATOR WALL MOUNTED FAN. FAN SHALL HAVE A CAPACITY OF BETWEEN 6100 CFM WITH A VELOCITY OF 1075 F.P.M., 1/3 MOTOR HP, 120 VOLTAGE 1 PHASE AND OSHA-COMPLIANT ZINC PLATED WIRE GUARD (CERTIFICATIONS UL 507). PROVIDE FAN GREENHECK MODEL BKT-WPC-100-OD MOUNTING BRACKET PER MANUFACTURER RECOMMENDATIONS. CONTRACTOR COORDINATE LOCATION AND MOUNTING HEIGHT OF FAN WITH OWNER PRIOR TO ROUGH-IN.
- CONTRACTOR PROVIDE MANUAL WALL SWITCH AT 48" A.F.F FOR CIRCULATOR FAN. COORDINATE LOCATION WITH OWNER PRIOR TO ROUGH-IN.
- PROVIDE ROOF MOUNTED EXHAUST FAN WITH SLOPED ROOF CURB. COORDINATE SLOPED OF ROOF WITH GENERAL CONTRACTOR PRIOR TO ROUGH-IN. EXTEND 28"x28" EXHAUST DUCT FROM EXHAUST FAN THROUGH DRYWALL CEILING IN SERVICE BAYS. COVER EXHAUST OPENING IN CEILING WITH WIRE MESH.



ENLARGED FLOOR PLAN - MECHANICAL
 1/4" = 1'-0"



1 MECHANICAL - FIRST FLOOR
 M1.0 1/8" = 1'-0"

GRISMER TIRE & AUTO SERVICE

MASON, OH
 800 READING ROAD
 MASON, OH 45040

Revisions / Submissions

ID	Description	Date

© 2023 CESO, INC
 Project number: 23-42-064
 Scale: As indicated
 Drawn By: Author
 Checked By: Checker
 Date: 04/26/2023
 Issue: PERMIT

Sheet Title:
MECHANICAL - FIRST FLOOR

M1.0