

FOR QUESTIONS, CALL THE  
Highwoods Group  
REGION 40  
PHONE: (919) 875 - 0420  
EMAIL: reg40@captiveaire.com

PATENT NUMBERS  
EXHAUST HOODS ND-2/BD-2/SND-2 (CANADA) - CA PATENT 2520435 C.

**HOOD INFORMATION - JOB#6176021**

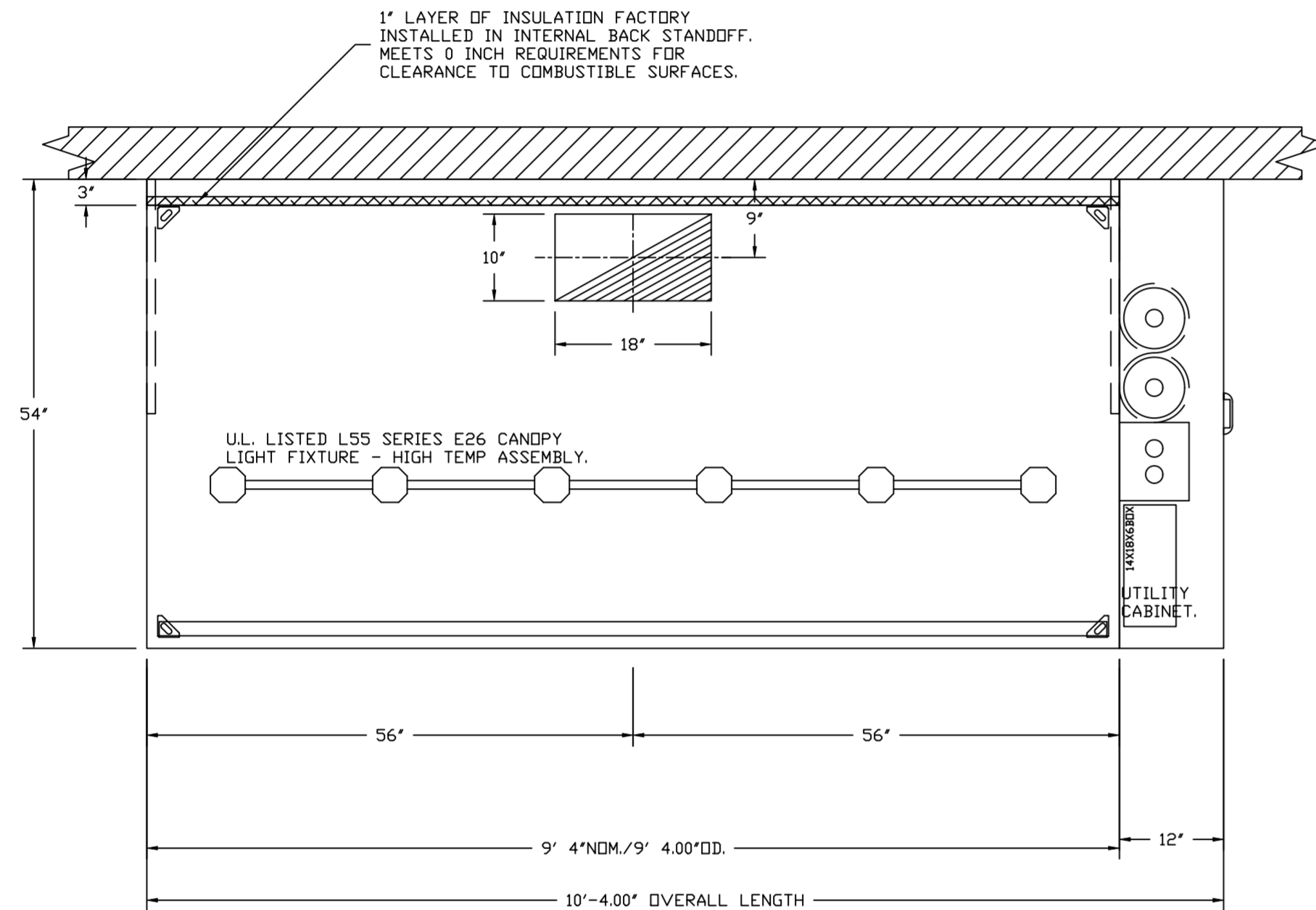
HOOD NO	TAG	MODEL	MANUFACTURER	LENGTH	MAX COOKING TEMP	TYPE	APPLIANCE DUTY	DESIGN CFM/FT	TOTAL EXH CFM	EXHAUST PLENUM RISER(S)				HOOD CONSTRUCTION	HOOD CONFIG			
										WIDTH	LENG	HEIGHT	DIA		CFM	VEL	SP	END TO END
1		5424 ND-2	CAPTIVEAIRE	9' 4"	600 DEG	I	HEAVY	204	1900	10"	18"	4"	1900	1520	-0.818'	430 SS WHERE EXPOSED	ALONE	ALONE

**HOOD INFORMATION**

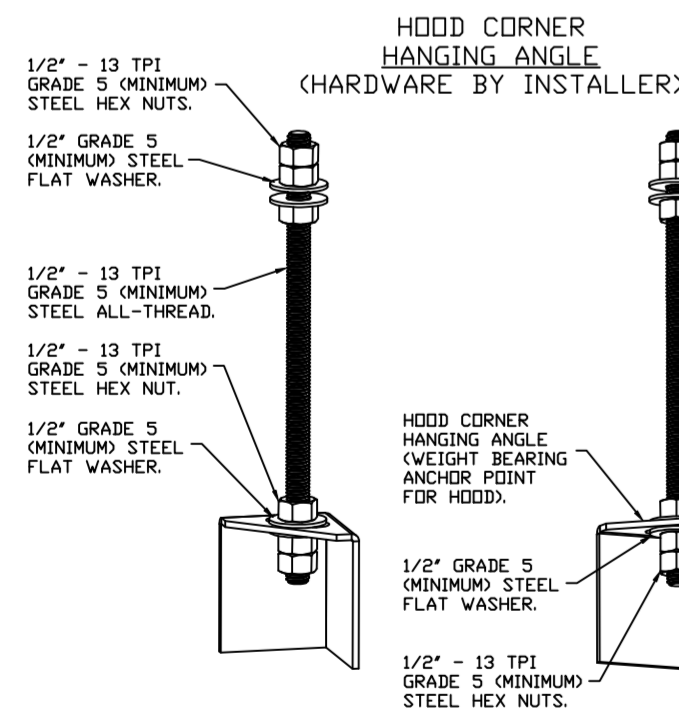
HOOD NO	TAG	FILTER(S)				LIGHT(S)				UTILITY CABINET(S)				FIRE SYSTEM HANGING WEIGHT	HOOD HANGING WEIGHT		
		TYPE	QTY	HEIGHT	LENGTH	EFFICIENCY @ 7 MICRONS	QTY	TYPE	WIRE GUARD	LOCATION	SIZE	FIRE SYSTEM TYPE	SIZE			ELECTRICAL MODEL #	SWITCHES QUANTITY
1		CAPTRATE SOLID FILTER	7	16"	16"	85% SEE FILTER SPEC	6	L55 SERIES E26	NO	RIGHT	12"x54"x24"	ANSUL R-102	3.0/3.0	SC-110110MA	1 LIGHT 1 FAN	YES	687 LBS

**HOOD OPTIONS**

HOOD NO	TAG	OPTION
1		FIELD WRAPPER 10.00" HIGH FRONT, LEFT, RIGHT. INSULATION FOR BACK OF HOOD. RISER SENSOR INSTALL 6IN PLEN. RIGHT VERTICAL END PANEL 27" TOP WIDTH, 21" BOTTOM WIDTH, 80" HIGH INSULATED 430 SS. LEFT VERTICAL END PANEL 27" TOP WIDTH, 21" BOTTOM WIDTH, 80" HIGH INSULATED 430 SS. FULL DIMENSION HANGING BRACKET - FRONT.

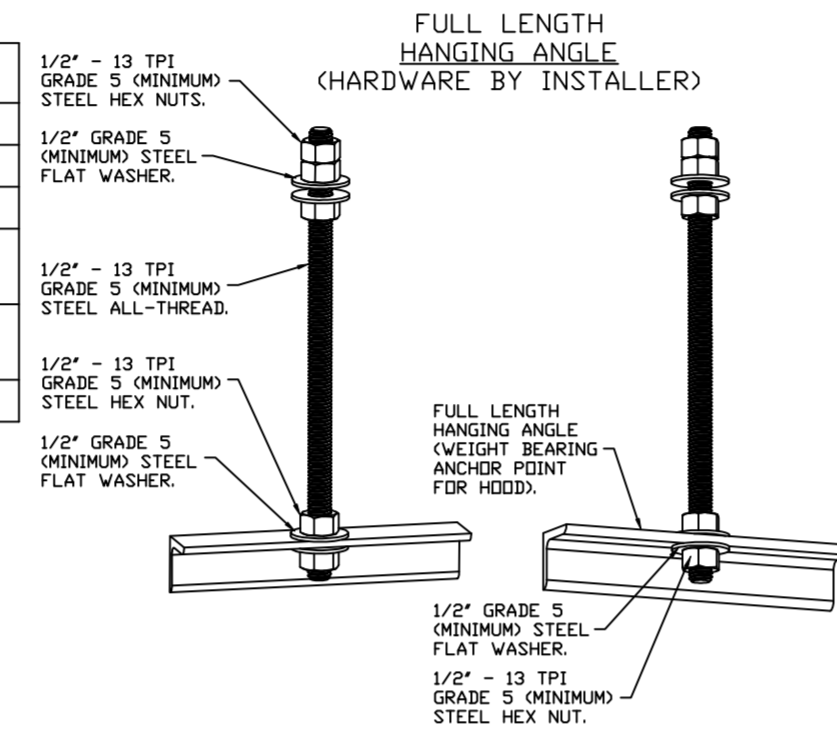


PLAN VIEW - HOOD #1  
9' 4.00" LONG 5424ND-2



**ASSEMBLY INSTRUCTIONS**

HANGING ANGLE MUST BE SUPPORTED WITH 1/2" - 13 TPI GRADE 5 (MINIMUM) ALL-THREAD. SANDWICH HANGING ANGLES AND CEILING ANCHOR POINTS WITH 1/2" GRADE 5 (MINIMUM) STEEL FLAT WASHERS AND 1/2" - 13 TPI GRADE 5 (MINIMUM) HEX NUTS AS SHOWN. MUST USE DOUBLED HEX NUT CONFIGURATION BENEATH HOOD HANGING ANGLES AND ABOVE CEILING ANCHORS. MAINTAIN 1/4" OF EXPOSED THREADS BENEATH BOTTOM HEX NUT. TORQUE ALL HEX NUTS TO 57 FT-LBS.



**ASSEMBLY INSTRUCTIONS**

HANGING ANGLE MUST BE SUPPORTED WITH 1/2" - 13 TPI GRADE 5 (MINIMUM) ALL-THREAD. SANDWICH HANGING ANGLES AND CEILING ANCHOR POINTS WITH 1/2" GRADE 5 (MINIMUM) STEEL FLAT WASHERS AND 1/2" - 13 TPI GRADE 5 (MINIMUM) HEX NUTS AS SHOWN. MUST USE DOUBLED HEX NUT CONFIGURATION ABOVE CEILING ANCHORS. SINGLE HEX NUT BENEATH HANGING ANGLE IS ACCEPTABLE FOR FULL LENGTH HANGING ANGLES. MAINTAIN 1/4" OF EXPOSED THREADS BENEATH BOTTOM HEX NUT. TORQUE ALL HEX NUTS TO 57 FT-LBS.

Filed Date: 08/21/2023

Filed For Record By: Michael Ames

- A = For Record Only, no action taken.
- B = For Record with GPD Group's engagement as defined herein.

**GPD Group's Comments:**

GPD Group's engagement is specifically limited as the AOR/EOR in a delegated design arrangement, which is for the limited scope of the design parameters as set forth within the construction documentation. The submitting and/or relying party(ies) ("SOR") shall not rely on this review as an act of quality control and acknowledge(s) GPD Group's commitment does not meet the level of engagement traditional with a shop drawing review or Peer Review. The SOR further acknowledges that the Contractor, as engaged for the delegated design, shall remain solely responsible for all elements of design and code requirements, complying with the design concept and Contract Documents, coordination, means and methods, and complying with Owner's directions, laws and regulations. In the event of uncertainty, Contractor shall take sole and primary responsibility. Any (in)action, notation or otherwise shall not create a presumption of approval or acceptance by GPD Group; nor shall it shift responsibility of any requirement, as stated in the Contract Documents or otherwise, to GPD Group.



**SPECIFICATION: CAPTRATE® GREASE-STOP® SOLID FILTER**

THE CAPTRATE GREASE-STOP SOLID FILTER IS A SINGLE-STAGE FILTER FEATURING A UNIQUE S-Baffle DESIGN IN CONJUNCTION WITH A SLOTTED REAR Baffle DESIGN, TO DELIVER EXCEPTIONAL FILTRATION EFFICIENCY.

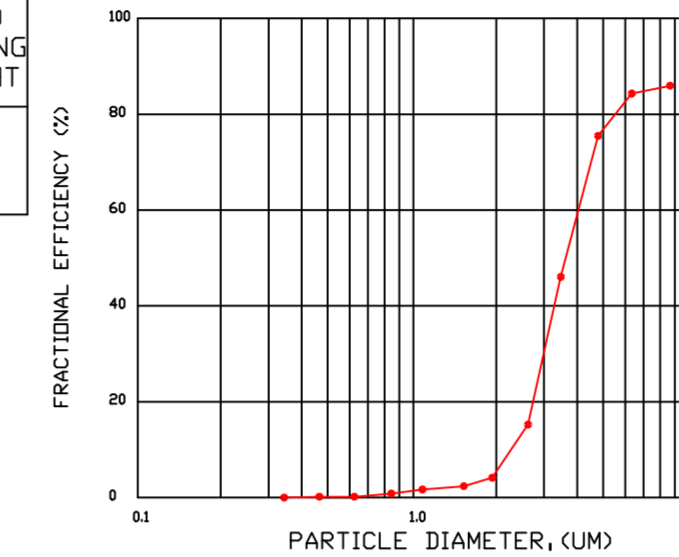
FILTER IS STAINLESS STEEL CONSTRUCTION, AND SIZED TO FIT INTO STANDARD 2-INCH DEEP HOOD CHANNEL(S).

UNITS SHALL INCLUDE STAINLESS STEEL HANDLES AND A FASTENING DEVICE TO SECURE THE TWO COMPONENTS WHEN ASSEMBLED.

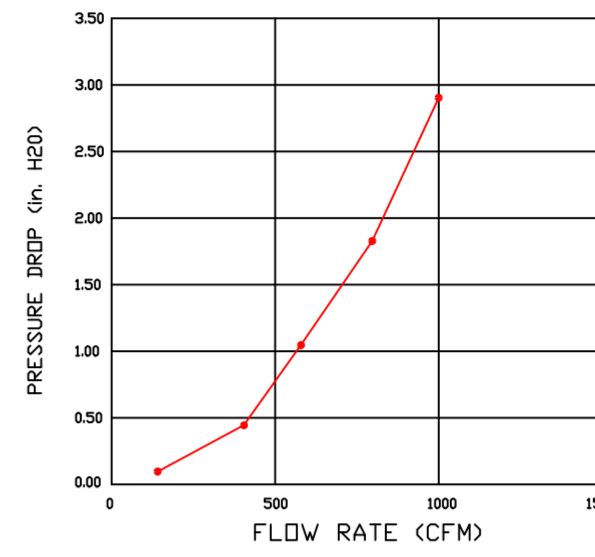
GREASE EXTRACTION EFFICIENCY PERFORMANCE SHALL REMOVE AT LEAST 75% OF GREASE PARTICLES FIVE MICRONS IN SIZE, AND 85% GREASE PARTICLES SEVEN MICRONS IN SIZE AND LARGER, WITH A CORRESPONDING PRESSURE DROP NOT TO EXCEED 1.0 INCHES OF WATER GAUGE.

THE CAPTRATE GREASE-STOP SOLID WAS TESTED TO ASTM STANDARD ASTM F2519-05. MANUFACTURER APPROVED FOR USE IN SOLID FUEL APPLICATIONS AS A SPARK ARRESTER.

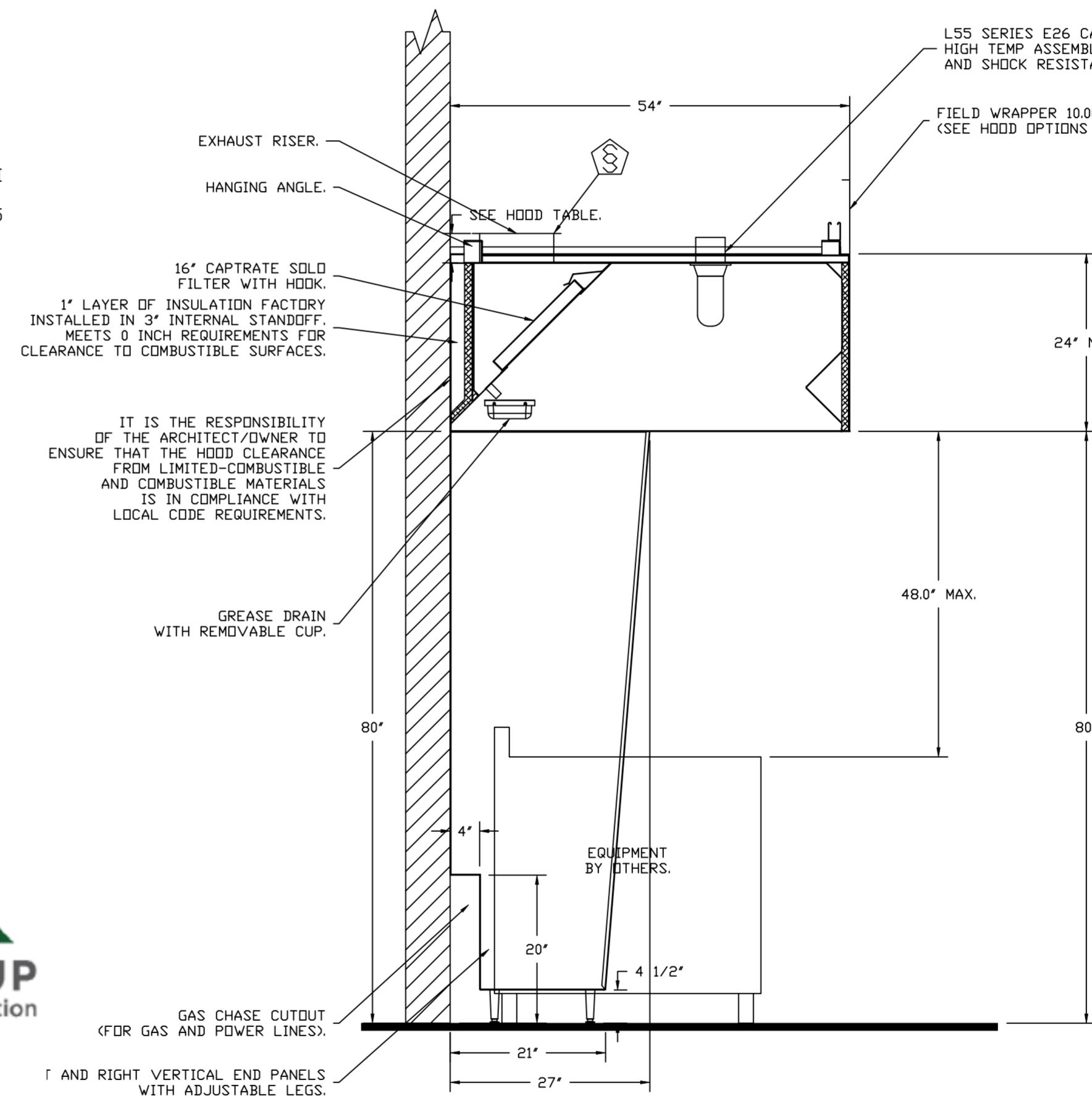
**EFFICIENCY VS. PARTICLE DIAMETER**



**PRESSURE DROP VS. FLOW RATE**



CAPTRATE FILTERS ARE BUILT IN COMPLIANCE WITH:  
NFPA #96.  
NSF STANDARD #2.  
UL STANDARD #1046.  
INT. MECH. CODE (IMC).  
ULC-S649.



SECTION VIEW - MODEL 5424ND-2  
HOOD - #1

**FIRE SYSTEM INFORMATION - JOB#6176021**

FIRE SYSTEM NO	TAG	TYPE	SIZE	FLOW POINTS	INSTALLATION	
					SYSTEM	LOCATION ON HOOD
1		ANSUL R102	3.0/3.0	14	FIRE CABINET RIGHT	RIGHT, HOOD 1

**REVISIONS**

DESCRIPTION	DATE

**CAPTIVEAIRE**

Highwoods Group  
www.captiveaire.com

4641 Paragon Park Rd., Raleigh, NC, 27616 PHONE: (919) 875 - 0420 FAX: 9198760577 EMAIL: reg40@captiveaire.com

CHIPOTLE NORTH DAVENPORT #4776  
DAVENPORT, FL, 33897

DATE: 8/20/2023  
DWG.#: 6176021  
DRAWN BY: JMB-40  
SCALE: 3/4" = 1'-0"  
MASTER DRAWING

**SHEET NO.**  
1

**EXHAUST FAN INFORMATION – JOB#6176021**

FAN UNIT NO	TAG	QTY	FAN UNIT MODEL #	MANUFACTURER	CFM	ESP	RPM	MOTOR ENCL	HP	BHP	PHASE	VOLT	FLA	DISCHARGE VELOCITY	WEIGHT (LBS)	SDNES
1	EF-1	1	DUBSHFA	CAPTIVEAIRE	1900	1.200	1476	TEAD-ECM	1.000	0.5810	1	115	11.6	601 FPM	93	14.2
2	EF-2	1	DR12HFA	CAPTIVEAIRE	150	0.500	1181	TEAD-ECM	0.250	0.0730	1	115	2.9		52	5.1

**FAN OPTIONS**

FAN UNIT NO	TAG	QTY	DESCRIPTION
1	EF-1	1	GREASE BOX
		1	REMOVE HINGE KIT LABEL FROM THE FAN BASE
		1	MIAMI DADE CERTIFICATION – NDA-1 ALUMINUM UPBLAST
		1	ECM WIRING PACKAGE – PWM SIGNAL FROM ECPM03 PREWIRE (TELCO MOTOR), CCW ROTATION
		1	2 YEAR PARTS WARRANTY
2	EF-2	1	I 12-BDD DAMPER
		1	MIAMI DADE CERTIFICATION – NDA-1 ALUMINUM DOWNBLAST 10
		1	2 YEAR PARTS WARRANTY

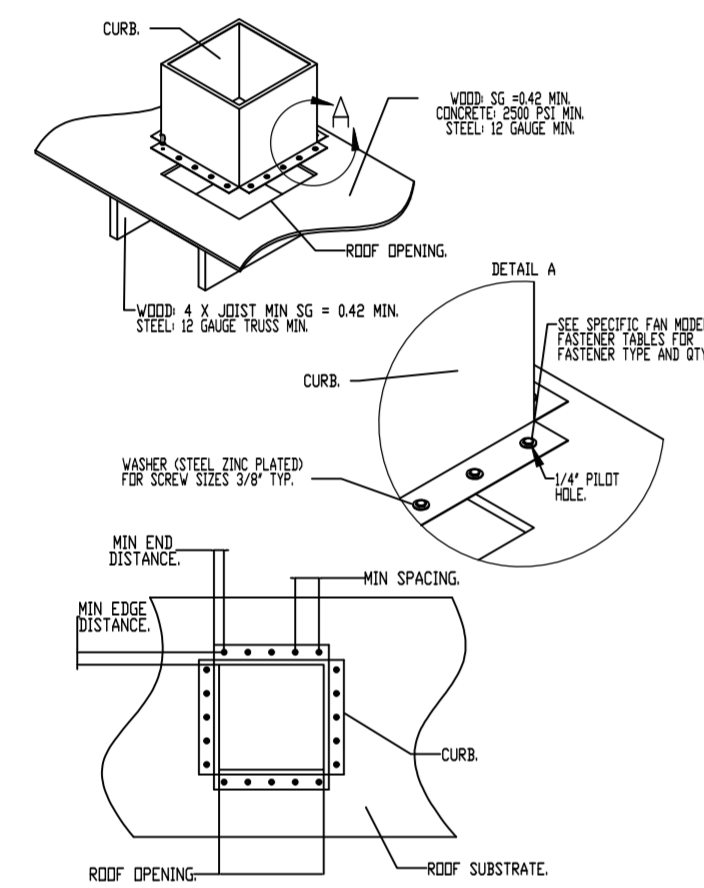
**FAN ACCESSORIES**

FAN UNIT NO	TAG	EXHAUST				SUPPLY		
		GREASE CUP	GRAVITY DAMPER	WALL MOUNT	SIDE DISCHARGE	GRAVITY DAMPER	MOTORIZED DAMPER	WALL MOUNT
1	EF-1	YES						
2	EF-2		YES					

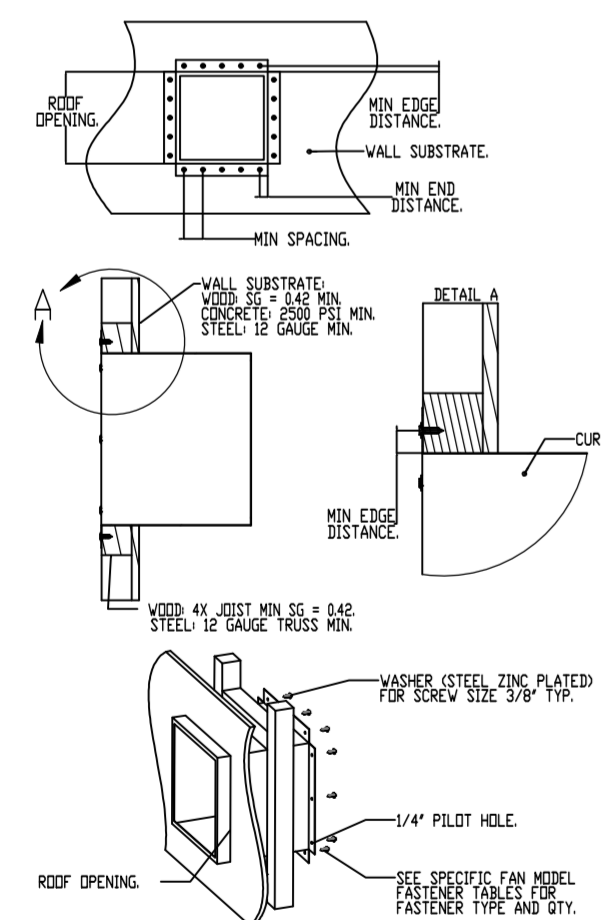
**CURB ASSEMBLIES**

NO	DN FAN	TAG	WEIGHT	ITEM	SIZE
1	# 1	EF-1	66 LBS	CURB	23.000"W X 23.000"L X 26.000"H VENTED 16 GAUGE.
2	# 2	EF-2	51 LBS	CURB	17.500"W X 17.500"L X 26.000"H 16 GAUGE.

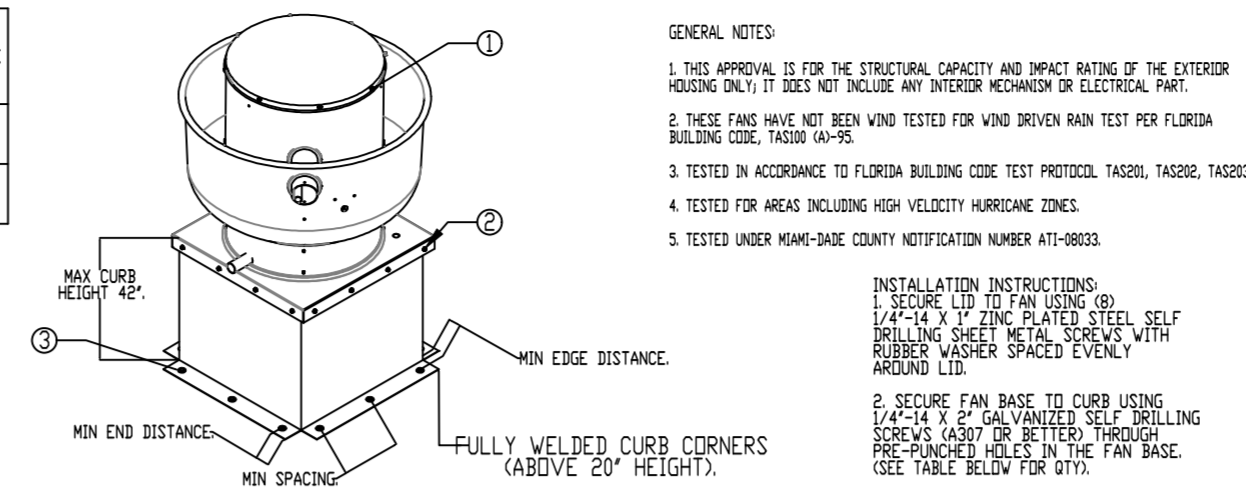
**MIAMI-DADE COUNTY – CURB ROOF INSTALLATION GUIDE**



**MIAMI-DADE COUNTY – WALL CURB INSTALLATION GUIDE**



**MIAMI-DADE NDA1 ALUMINUM UP-BLAST FANS**



**GENERAL NOTES:**

- THIS APPROVAL IS FOR THE STRUCTURAL CAPACITY AND IMPACT RATING OF THE EXTERIOR HOODING ONLY. IT DOES NOT INCLUDE ANY INTERIOR MECHANISM OR ELECTRICAL PART.
- THESE FANS HAVE NOT BEEN WIND TESTED FOR WIND DRIVEN RAIN TEST PER FLORIDA BUILDING CODE, TAS201 (A)-95.
- TESTED IN ACCORDANCE TO FLORIDA BUILDING CODE TEST PROTOCOLS, TAS201, TAS202, TAS203.
- TESTED FOR AREAS INCLUDING HIGH VELOCITY HURRICANE ZONES.
- TESTED UNDER MIAMI-DADE COUNTY NOTIFICATION NUMBER AT-08033.

**INSTALLATION INSTRUCTIONS:**

- SECURE LID TO FAN USING (2) 1/4"-14 X 1 1/2" GALV. PLATED SELF-DRILLING SHEET METAL SCREWS WITH RUBBER WASHER SPACED EVENLY AROUND LID.
- SECURE FAN BASE TO CURB USING (4) 3/8" DIA. ZINC PLATED LAG BOLTS THROUGH PRE-DRILLED HOLES IN THE FAN BASE. (SEE TABLE BELOW FOR QTY).
- SECURE CURB TO ROOF OR WALL BY DRILLING 1/4" DIA. PILOT HOLES IN THE CURB FLANGE AT LOCATIONS SHOWN IN THE DIAGRAM SEE TABLE BELOW FOR FASTENER TYPE. USE TABLE BELOW FOR FASTENER QTY.

**CURB MATERIAL:**  
20" HIGH & LESS = 20 GA. STEEL.  
ABOVE 20" THRU 42" = 16 GA. STEEL.

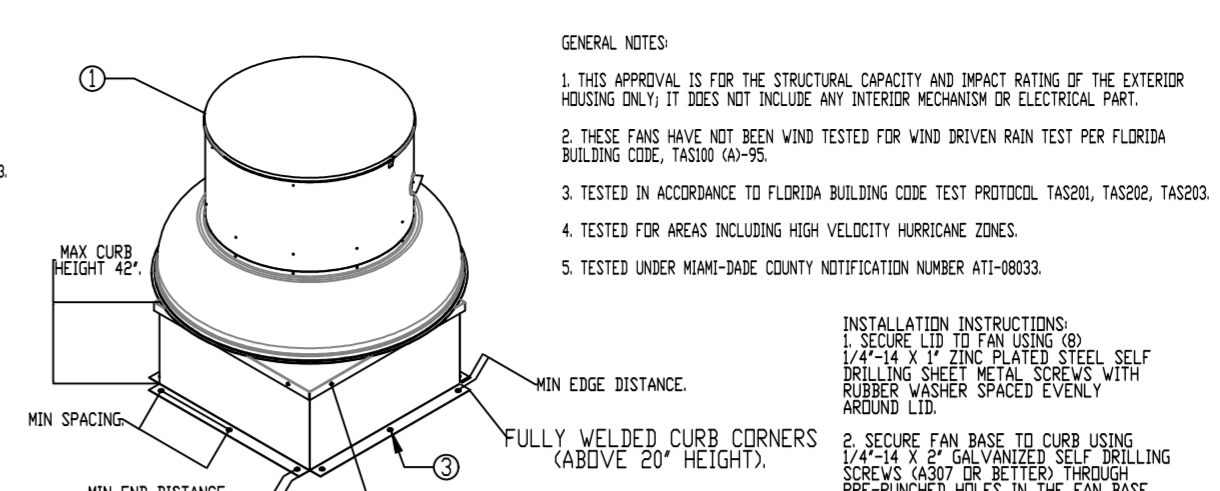
**DESIGN PRESSURE:** +1500 / -1500 PSF.  
LARGE MISSILE IMPACT RESISTANT.

FASTENER	FAN TO CURB		WOOD (SG = 0.42 MIN.)		STEEL (12 GAUGE MIN.)		CONCRETE (2500 PSI MIN. CRACKED CONCRETE)	
	5/16"-18 X 2" SELF DRILLING SCREW (ELCO DRILL-FLEX OR BETTER)	3/8" DIA. ZINC PLATED LAG BOLT	3/8" DIA. ZINC PLATED LAG BOLT	1/4"-14 DRILL-FLEX SELF DRILLING SCREW	3/8" DIA. SS HILTI KWIK BOLT T2 EXPANSION ANCHOR	3/8" DIA. SS HILTI KWIK BOLT T2 EXPANSION ANCHOR	3/8" DIA. SS HILTI KWIK BOLT T2 EXPANSION ANCHOR	3/8" DIA. SS HILTI KWIK BOLT T2 EXPANSION ANCHOR
MINIMUM THREAD PENETRATION	N/A	2-1/2"	2-1/2"	12 GAUGE	2"	12 GAUGE	2"	12 GAUGE
MINIMUM EDGE DISTANCE	N/A	1-1/2"	1-1/2"	3/8"	3"	3/8"	3"	3"
MINIMUM END DISTANCE	N/A	2-5/8"	2-5/8"	3/8"	3"	3/8"	3"	3"
MINIMUM SPACING	N/A	1-1/2"	1-1/2"	3/4"	5-1/2"	3/4"	5-1/2"	3/4"

**INSTALLATION FASTENER QTY**

FAN MODEL	CURB TO FAN (ROOF)		CURB TO FAN (WALL)		WOOD (WALL)		STEEL (WALL)		CONCRETE (WALL)		CONCRETE (WALL)	
	PER SIDE	TOTAL	PER SIDE	TOTAL	PER SIDE	TOTAL	PER SIDE	TOTAL	PER SIDE	TOTAL	PER SIDE	TOTAL
DUBS	3	12	3	12	4	16	4	16	5	20	5	20

**MIAMI-DADE NDA1 ALUMINUM DOWN-BLAST FANS**



**GENERAL NOTES:**

- THIS APPROVAL IS FOR THE STRUCTURAL CAPACITY AND IMPACT RATING OF THE EXTERIOR HOODING ONLY. IT DOES NOT INCLUDE ANY INTERIOR MECHANISM OR ELECTRICAL PART.
- THESE FANS HAVE NOT BEEN WIND TESTED FOR WIND DRIVEN RAIN TEST PER FLORIDA BUILDING CODE, TAS201 (A)-95.
- TESTED IN ACCORDANCE TO FLORIDA BUILDING CODE TEST PROTOCOLS, TAS201, TAS202, TAS203.
- TESTED FOR AREAS INCLUDING HIGH VELOCITY HURRICANE ZONES.
- TESTED UNDER MIAMI-DADE COUNTY NOTIFICATION NUMBER AT-08033.

**INSTALLATION INSTRUCTIONS:**

- SECURE LID TO FAN USING (2) 1/4"-14 X 1 1/2" GALV. PLATED SELF-DRILLING SHEET METAL SCREWS WITH RUBBER WASHER SPACED EVENLY AROUND LID.
- SECURE FAN BASE TO CURB USING (4) 3/8" DIA. ZINC PLATED LAG BOLTS THROUGH PRE-DRILLED HOLES IN THE FAN BASE. (SEE TABLE BELOW FOR QTY).
- SECURE CURB TO ROOF OR WALL BY DRILLING 1/4" DIA. PILOT HOLES IN THE CURB FLANGE AT LOCATIONS SHOWN IN THE DIAGRAM SEE TABLE BELOW FOR FASTENER TYPE. USE TABLE BELOW FOR FASTENER QTY.

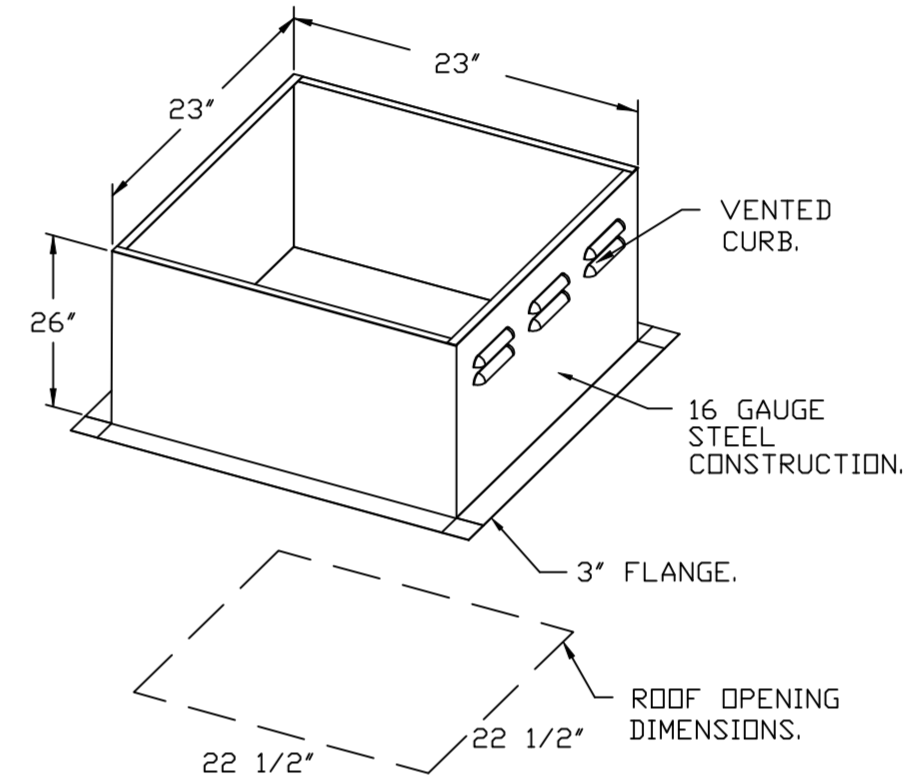
**CURB MATERIAL:**  
20" HIGH & LESS = 20 GA. STEEL.  
ABOVE 20" THRU 42" = 16 GA. STEEL.

**DESIGN PRESSURE:** +1500 / -1500 PSF.  
LARGE MISSILE IMPACT RESISTANT.

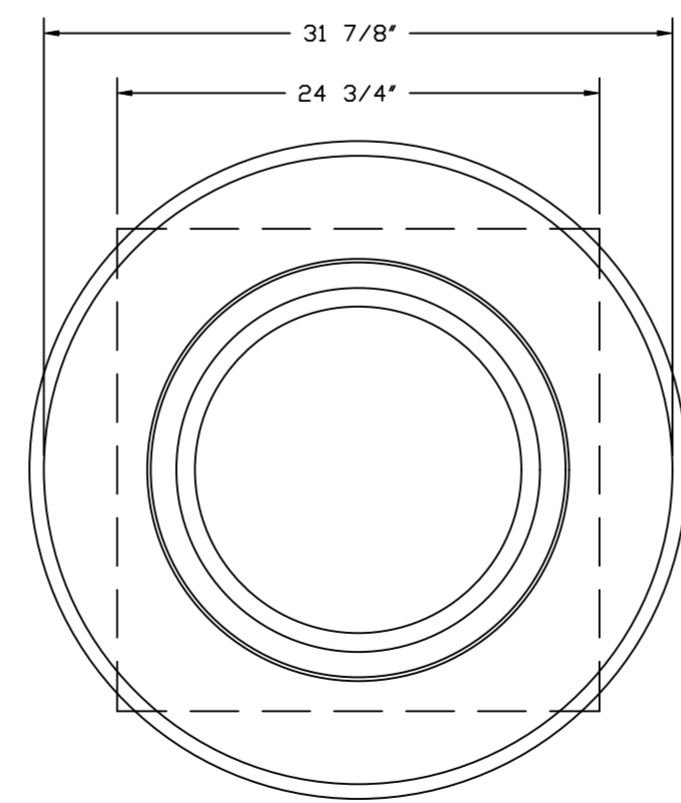
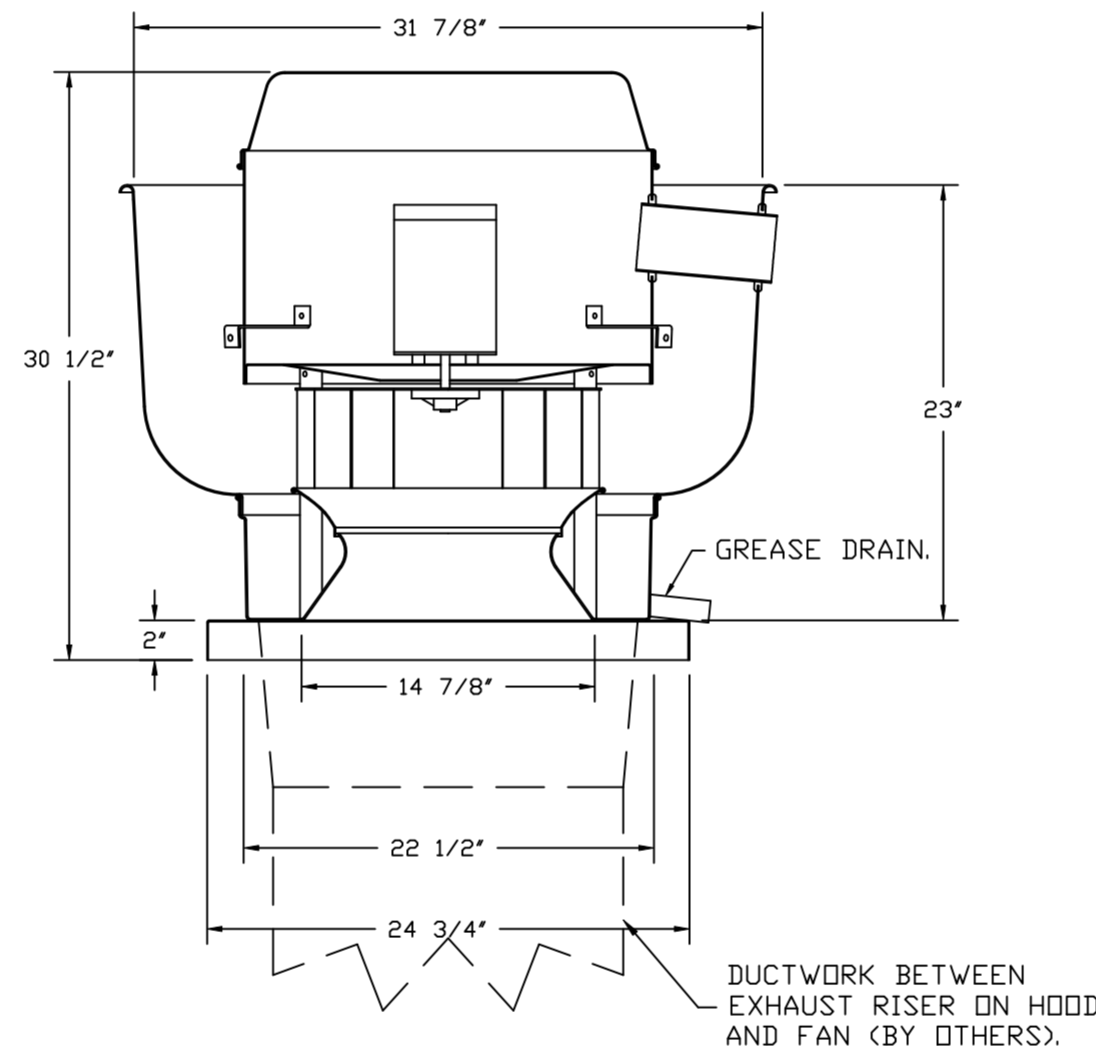
FASTENER	FAN TO CURB		WOOD (SG = 0.42 MIN.)		STEEL (12 GAUGE MIN.)		CONCRETE (2500 PSI MIN. CRACKED CONCRETE)	
	5/16"-18 X 2" SELF DRILLING SCREW (ELCO DRILL-FLEX OR BETTER)	3/8" DIA. ZINC PLATED LAG BOLT	3/8" DIA. ZINC PLATED LAG BOLT	1/4"-14 DRILL-FLEX SELF DRILLING SCREW	3/8" DIA. SS HILTI KWIK BOLT T2 EXPANSION ANCHOR	3/8" DIA. SS HILTI KWIK BOLT T2 EXPANSION ANCHOR	3/8" DIA. SS HILTI KWIK BOLT T2 EXPANSION ANCHOR	3/8" DIA. SS HILTI KWIK BOLT T2 EXPANSION ANCHOR
MINIMUM THREAD PENETRATION	N/A	2-1/2"	2-1/2"	12 GAUGE	2"	12 GAUGE	2"	12 GAUGE
MINIMUM EDGE DISTANCE	N/A	1-1/2"	1-1/2"	3/8"	3"	3/8"	3"	3"
MINIMUM END DISTANCE	N/A	2-5/8"	2-5/8"	3/8"	3"	3/8"	3"	3"
MINIMUM SPACING	N/A	1-1/2"	1-1/2"	3/4"	5-1/2"	3/4"	5-1/2"	3/4"

**INSTALLATION FASTENER QTY**

FAN MODEL	CURB TO FAN (ROOF)		CURB TO FAN (WALL)		WOOD (WALL)		STEEL (WALL)		CONCRETE (WALL)		CONCRETE (WALL)	
	PER SIDE	TOTAL	PER SIDE	TOTAL	PER SIDE	TOTAL	PER SIDE	TOTAL	PER SIDE	TOTAL	PER SIDE	TOTAL
DW2	3	12	3	12	3	12	3	12	3	12	3	12



FAN #1 DUBSHFA – EXHAUST FAN (EF-1)



TOP VIEW

**FEATURES:**

- DIRECT DRIVE CONSTRUCTION (NO BELTS/PULLEYS).
- ROOF MOUNTED FANS.
- RESTAURANT MODEL.
- UL705 AND UL762 AND ULC-S645
- VARIABLE SPEED CONTROL.
- INTERNAL WIRING.
- THERMAL OVERLOAD PROTECTION (SINGLE PHASE).
- HIGH HEAT OPERATION 300°F (149°C).
- GREASE CLASSIFICATION TESTING.
- NEMA 3R SAFETY DISCONNECT SWITCH.

**NORMAL TEMPERATURE TEST**  
EXHAUST FAN MUST OPERATE CONTINUOUSLY WHILE EXHAUSTING AIR AT 300°F (149°C) UNTIL ALL FAN PARTS HAVE REACHED THERMAL EQUILIBRIUM, AND WITHOUT ANY DETERIORATING EFFECTS TO THE FAN WHICH WOULD CAUSE UNSAFE OPERATION.

**ABNORMAL FLARE-UP TEST**  
EXHAUST FAN MUST OPERATE CONTINUOUSLY WHILE EXHAUSTING BURNING GREASE VAPORS AT 600°F (316°C) FOR A PERIOD OF 15 MINUTES WITHOUT THE FAN BECOMING DAMAGED TO ANY EXTENT THAT COULD CAUSE AN UNSAFE CONDITION.

**OPTIONS**

- GREASE BOX.
- REMOVE HINGE KIT LABEL FROM THE FAN BASE.
- MIAMI DADE CERTIFICATION – NDA-1 ALUMINUM UPBLAST.
- ECM WIRING PACKAGE – PWM SIGNAL FROM ECPM03 PREWIRE (TELCO MOTOR), CCW ROTATION.
- 2 YEAR PARTS WARRANTY.

**REVISIONS**

DESCRIPTION	DATE:

**www.captiveaire.com**

**Highwoods Group**

4641 Paragon Park Rd., Raleigh, NC, 27616 PHONE: (919) 875 - 0420 FAX: 9198760577 EMAIL: reg40@captiveaire.com

**CHIPOTLE NORTH DAVENPORT #4776**

**DAVENPORT, FL, 33897**

**DATE:** 8/20/2023

**DWG.#:** 6176021

**DRAWN BY:** JMB-40

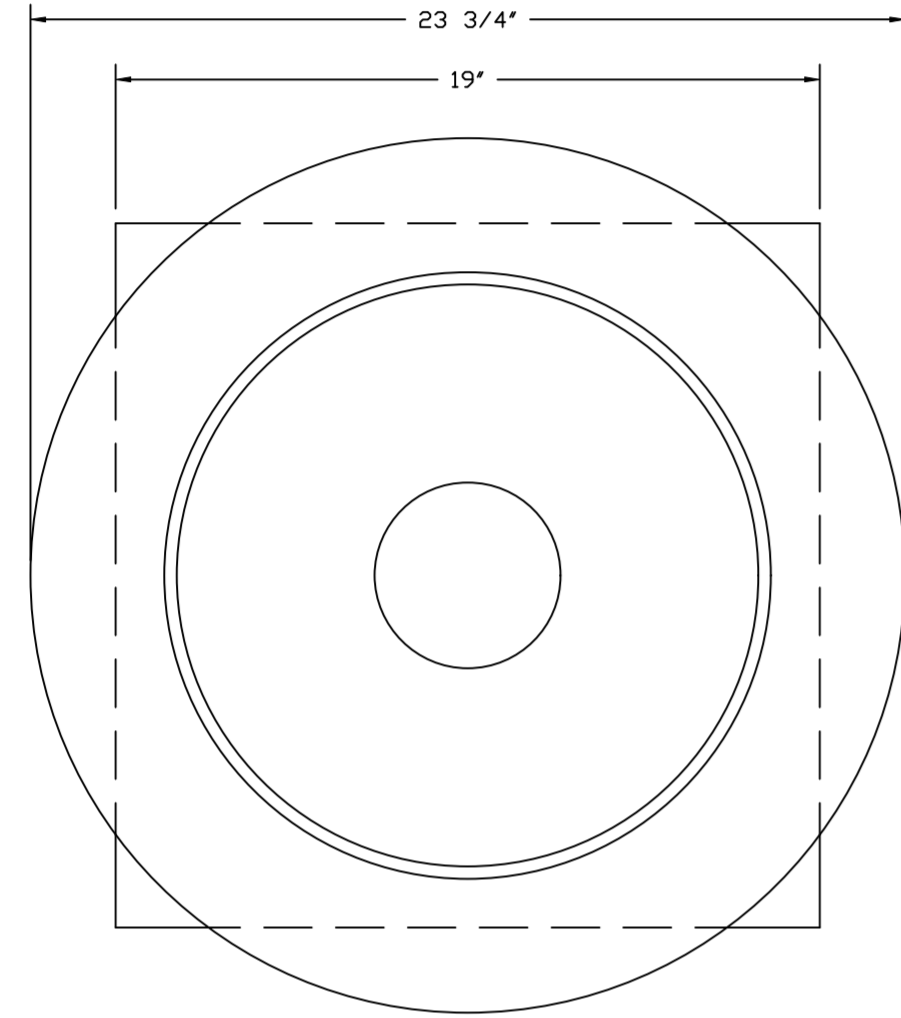
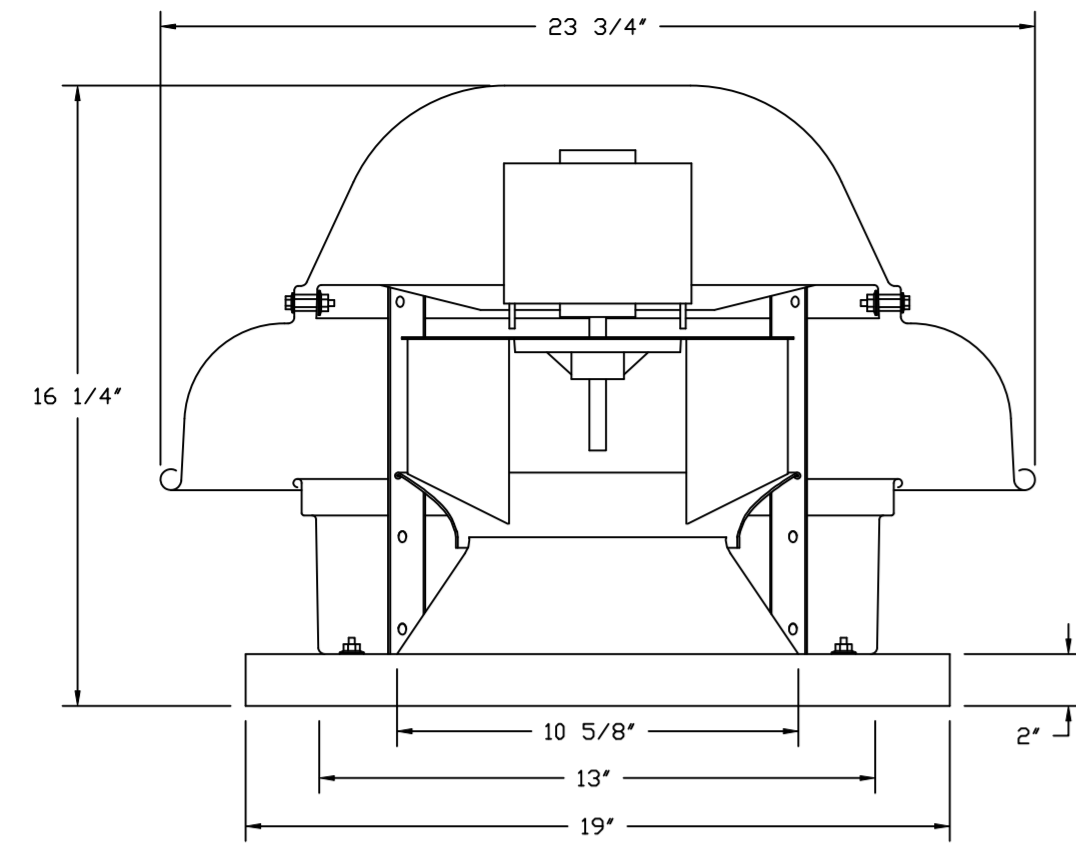
**SCALE:** 3/4" = 1'-0"

**MASTER DRAWING**

**SHEET NO.**

2

FAN #2\_DR12HFA - EXHAUST FAN (CF-22)



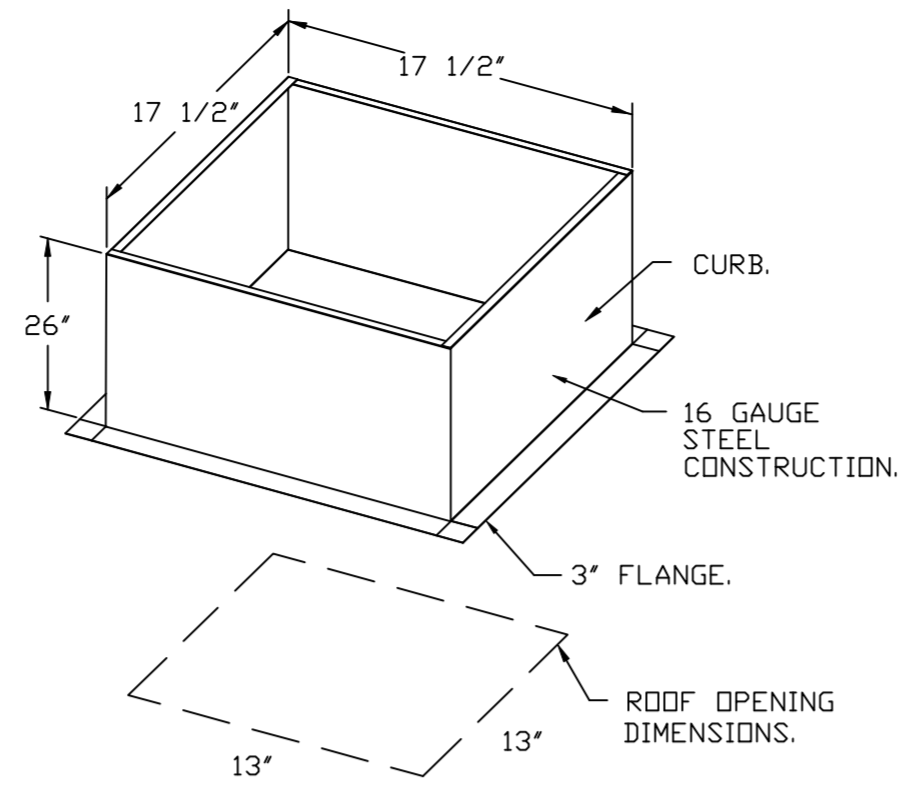
TOP VIEW

**FEATURES:**

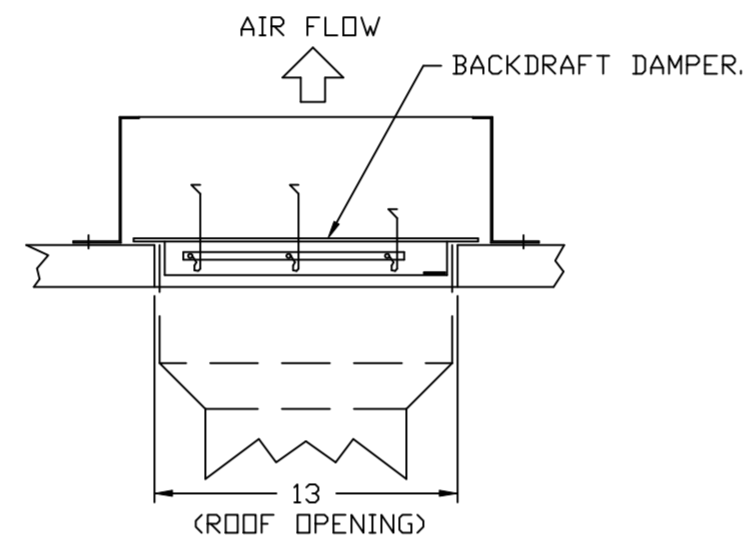
- DIRECT DRIVE CONSTRUCTION (NO BELTS/PULLEYS).
- ROOF MOUNTED FANS.
- UL705.
- SAFETY DISCONNECT.
- STANDARD BIRD SCREEN.
- SPEED CONTROL.
- THERMAL OVERLOAD PROTECTION (SINGLE PHASE).

**OPTIONS:**

- I 12-BDD DAMPER.
- MIAMI DADE CERTIFICATION - NDA-1 ALUMINUM DOWNBLAST 10.
- 2 YEAR PARTS WARRANTY.

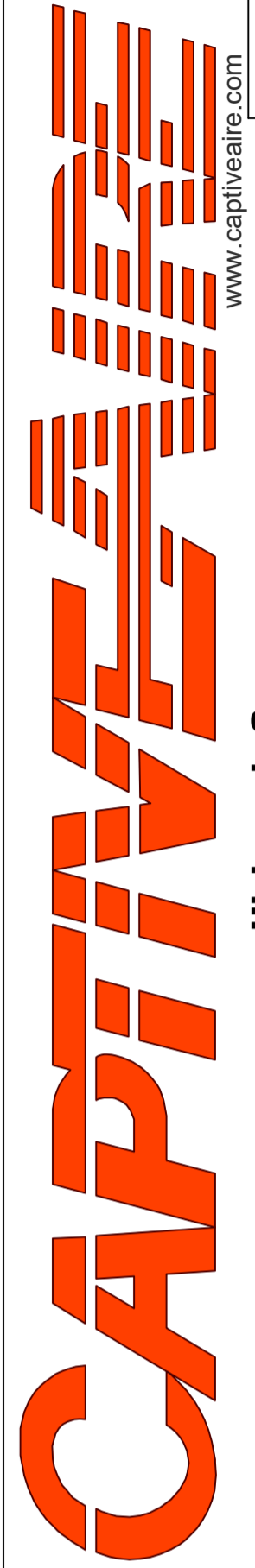
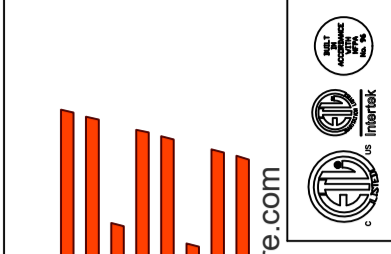


**BACKDRAFT DAMPER INSTALLATION**



**REVISIONS**

DESCRIPTION	DATE:



www.captive.com  
 4641 Paragon Park Rd., Raleigh, NC, 27616 PHONE: (919) 875 - 0420 FAX: 9198760577 EMAIL: reg40@captive.com

CHIPOTLE NORTH DAVENPORT #4776  
 DAVENPORT, FL, 33897

DATE: 8/20/2023

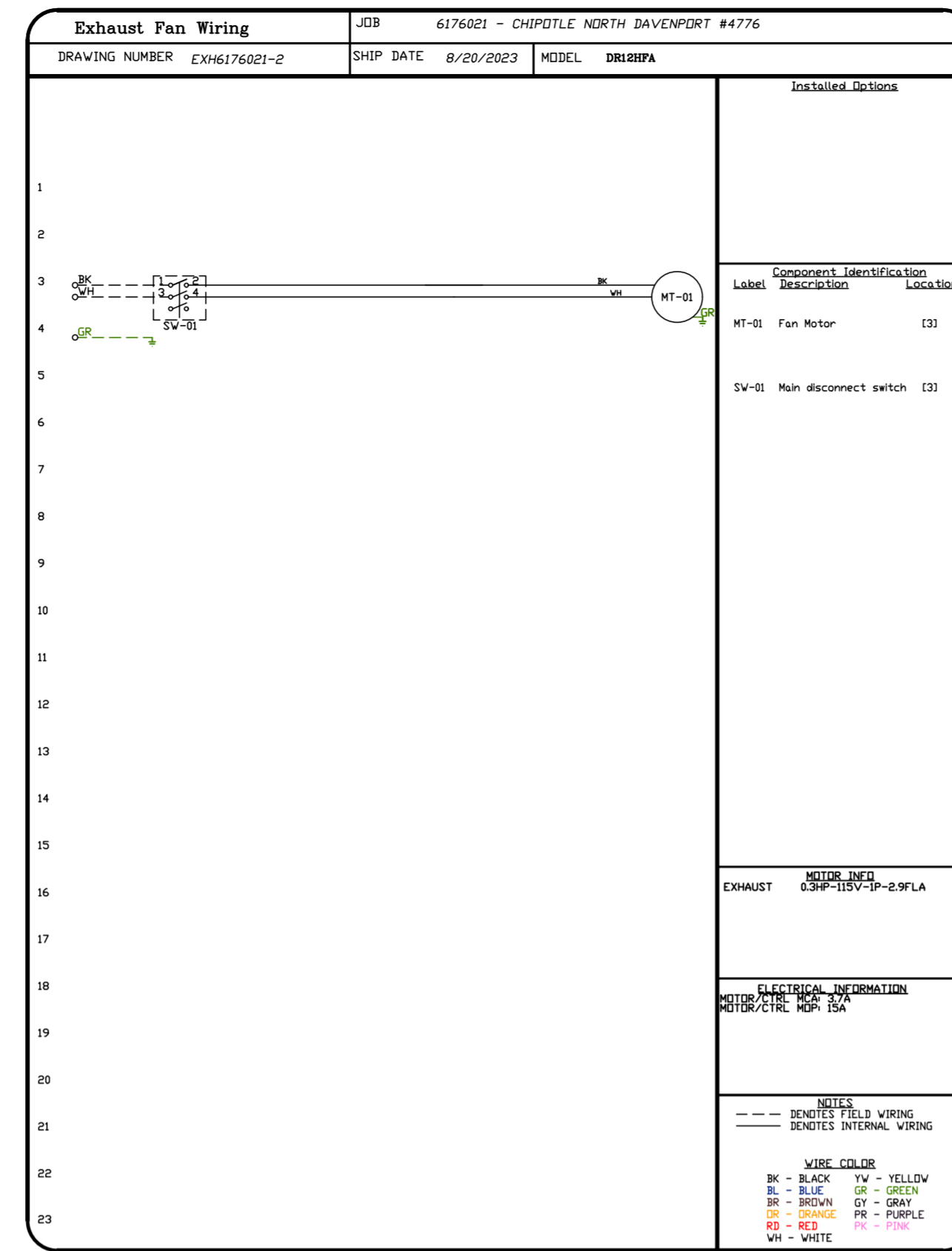
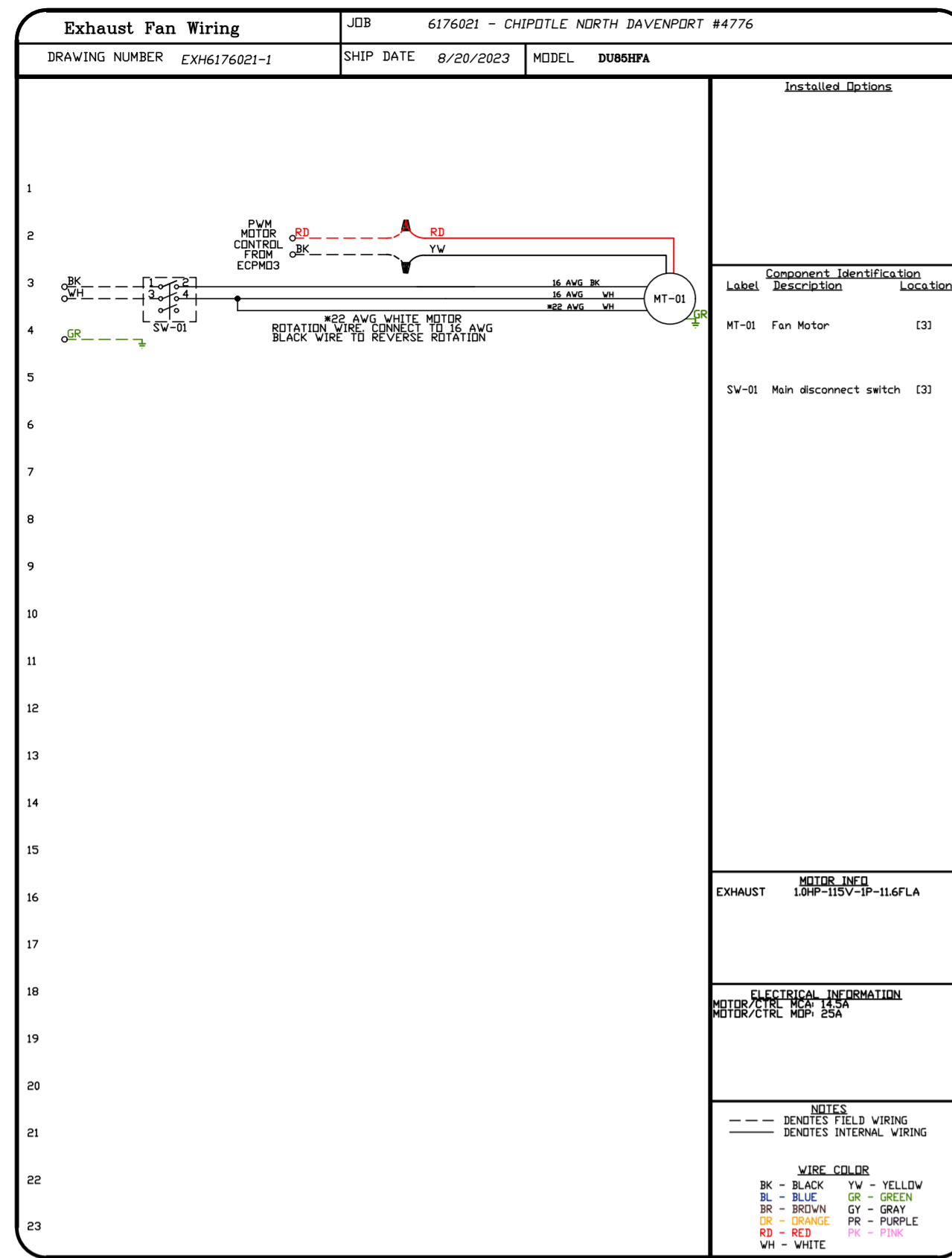
DWG.#: 6176021

DRAWN BY: JMB-40

SCALE: 3/4" = 1'-0"

MASTER DRAWING

SHEET NO. 3



REVISIONS	
DESCRIPTION	DATE

Highwoods Group

4641 Paragon Park Rd., Raleigh, NC, 27616 PHONE: (919) 875 - 0420 FAX: 9198760377 EMAIL: reg40@captivair.com

CHIPOTLE NORTH DAVENPORT #4776

DAVENPORT, FL, 33897

DATE: 8/20/2023

DWG.#: 6176021

DRAWN BY: JMB-40

SCALE: 3/4" = 1'-0"

MASTER DRAWING

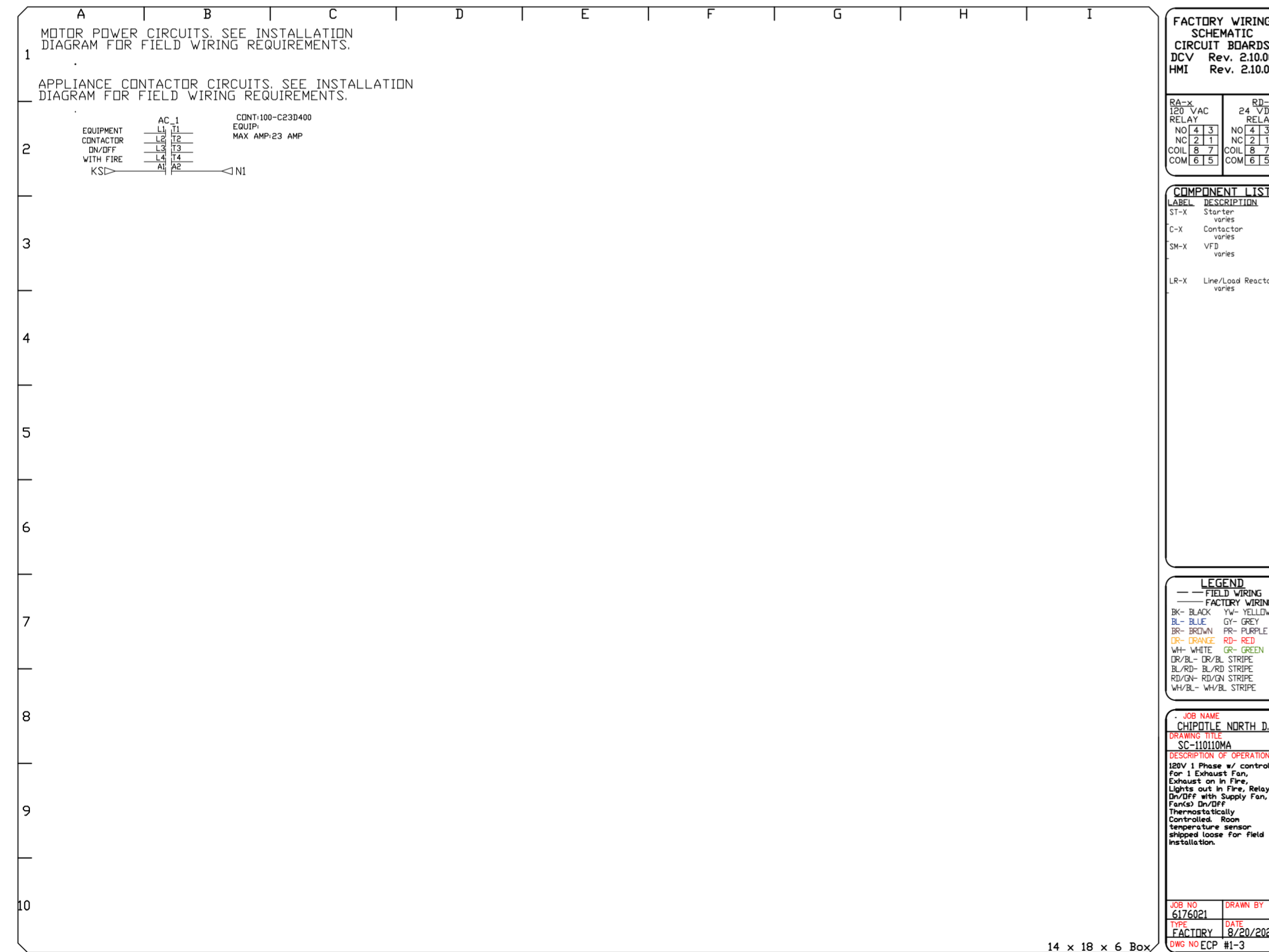
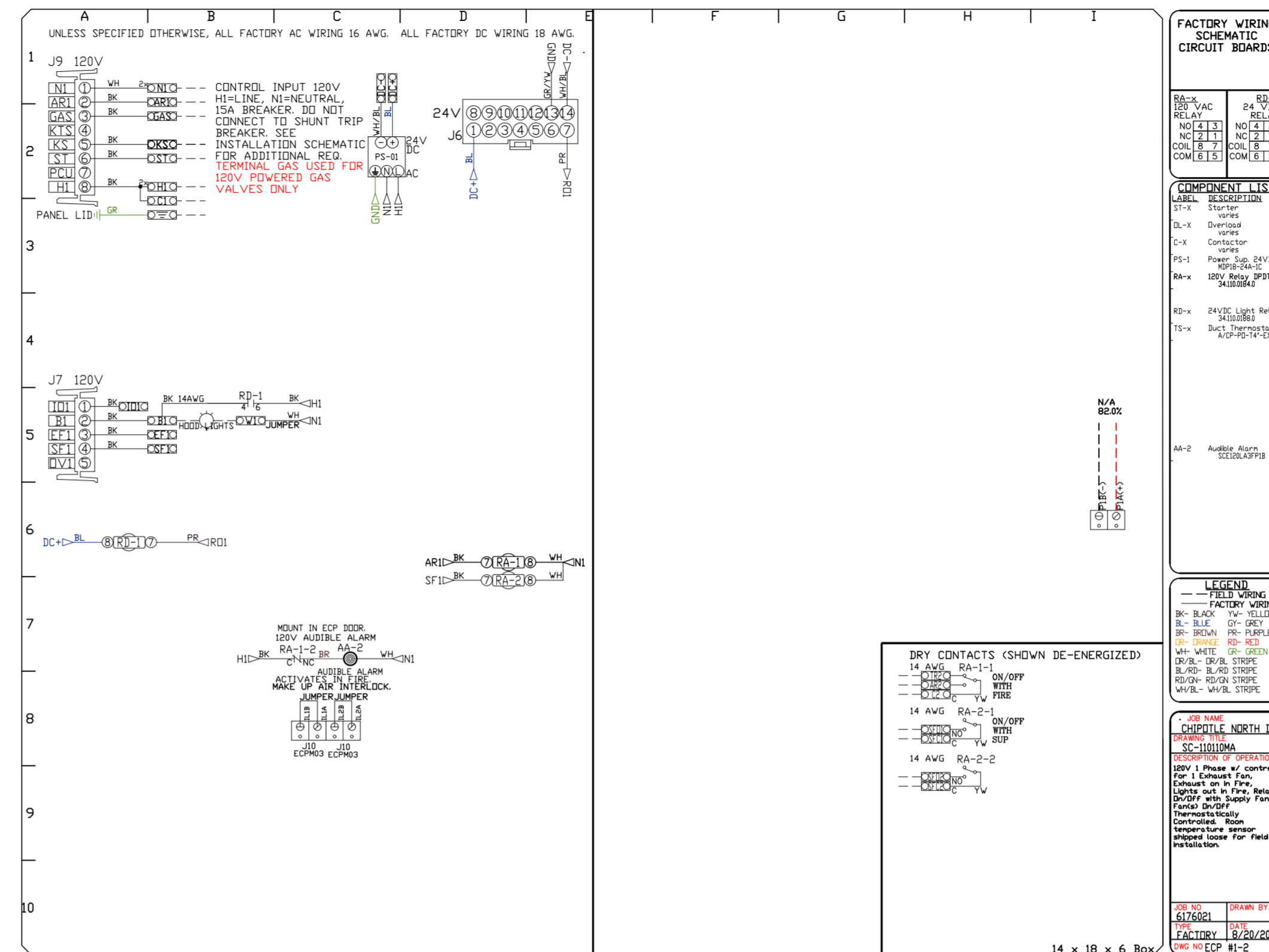
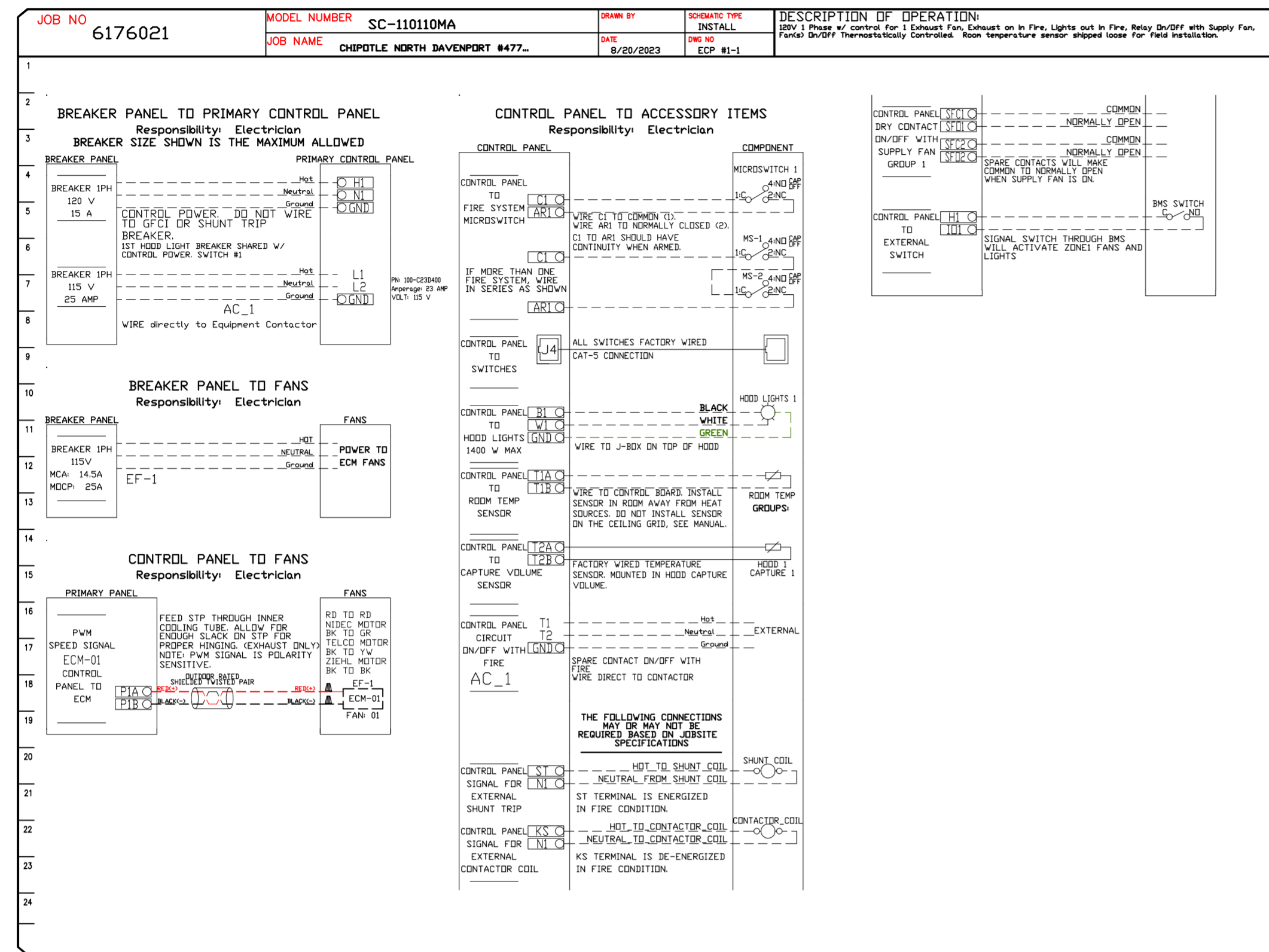
  

**SHEET NO.**

4

ELECTRICAL PACKAGE - JOB#6176021

NO	TAG	PACKAGE #	LOCATION	SWITCHES		OPTION	FANS CONTROLLED					
				LOCATION	QUANTITY		FAN TAG	TYPE	#	HP	VOLT	FLA
1		SC-110110MA	UTILITY CABINET RIGHT	UTILITY CABINET RIGHT HOOD # 1	1 LIGHT 1 FAN	SMART CONTROLS THERMOSTATIC CONTROL W/ RELAY ON/OFF WITH SUPPLY	EF-1	EXHAUST	1	1.000	115	11.6



REVISIONS

NO.	DESCRIPTION	DATE



CHIPOTLE NORTH DAVENPORT #4776  
 DAVENPORT, FL, 33897

DATE: 8/20/2023

DWG.#: 6176021

DRAWN BY: JMB-40

SCALE: 3/4" = 1'-0"

MASTER DRAWING

SHEET NO. 5