



**VINTON  
VETERINARY  
HOSPITAL -  
ANNEX**

1311 EAST WASHINGTON AVE. VINTON,  
VA 24179



PO Box 161  
Davidson, NC 28036

ph. 704.756.3540  
RLArchitecture.com

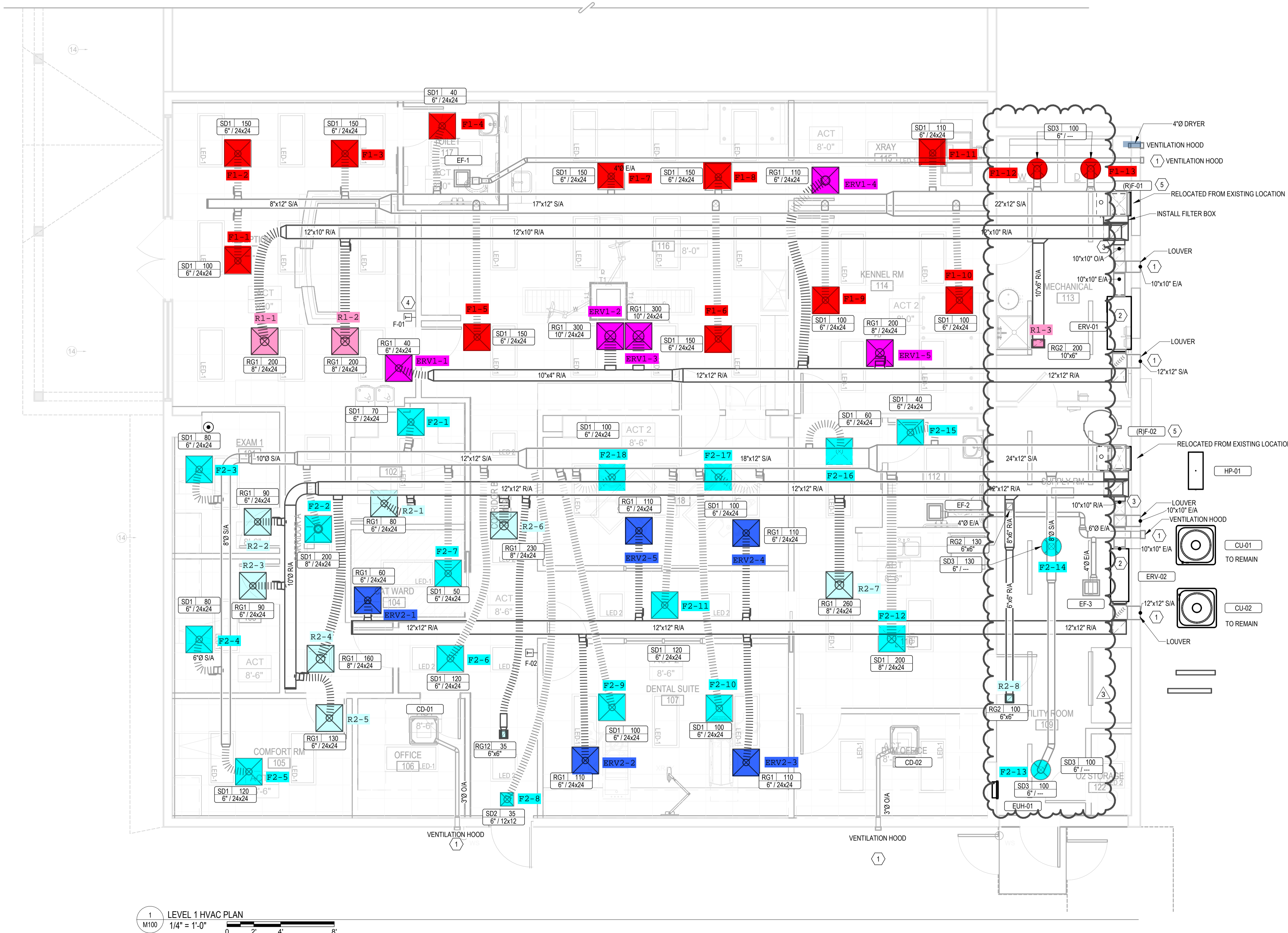


120 SOMMERVILLE PARK ROAD  
RALEIGH, NC 27603  
NC FIRM # C-3824

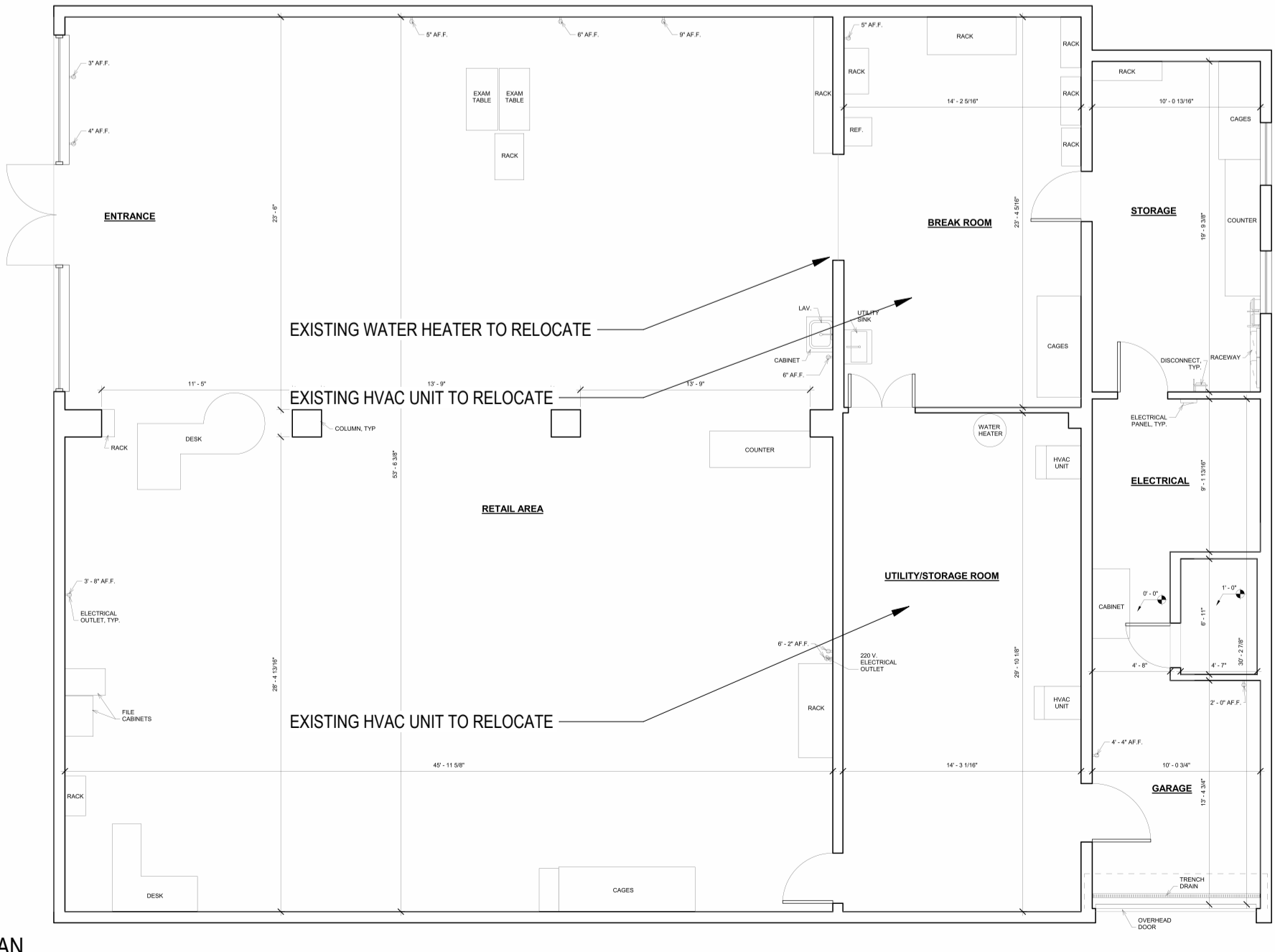


11-04-2022

- KEYNOTES**
- M.C. TO KEEP AIR INTAKES MORE THAN TEN FEET FROM ANY EXHAUST.
  - M.C. TO FLOOR MOUNT ERV UNITS USING FACTORY BASE VIBRATION ISOLATOR ASSEMBLY.
  - DUCT MOUNTED SMOKE DETECTOR.
  - REMOTE ANNUNCIATOR FOR 2 SMOKE DETECTOR UNITS.
  - M.C. TO RELOCATE EXISTING GAS LINES TO NEW FURNACE LOCATIONS.



EXISTING KEY PLAN  
NOT TO SCALE



DRAWING TITLE:  
**HVAC FLOOR PLAN**

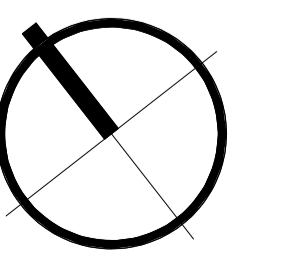
THIS DRAWING IS THE PROPERTY OF  
RLArchitecture, pllc AND IS NOT TO BE  
COPIED OR REPRODUCED IN PART OR  
WHOLE WITHOUT THE EXPRESSED  
WRITTEN PERMISSION OF  
RLArchitecture, pllc.

**CONSTRUCTION DOCUMENTS**

REVISIONS	
NO.	DESCRIPTION
1	9-13-22 Review Comments
2	11-03-22 Revision 3

ORIGINAL SHEET SIZE: 30 X 42  
DATE: 06-15-2022

M100



11/14/2022 10:49:16 AM

1 LEVEL 1 HVAC PLAN  
1/4" = 1'-0"

GAS-FIRED FURNACE & A-COIL SCHEDULE																																	
ID	NAME	NO.	MANUFACTURER	MODEL NO.	TYPE	ARRANGEMENT	VENTILATION		FAN				COOLING COIL				GAS-FIRED HEAT EXCHANGER								INTERLOCK		REMARKS						
							DESIGN AIRFLOW	MIN FLOW	DRIVE	QTY	POWER	ECM	ID	TYPE	NOMINAL CAP	EAT(db)	EAT(wb)	LAT(db)	LAT(wb)	INPUT	CAP	EFF	STAGES	TYPE	FUEL PRESS AVAIL	EAT(db)		LAT(db)	FILTER EFF	MCA	MOCP	VOLT	PH
(R)	F-01	IT / MECHANICAL	242	HEIL	NMMSB1002120C	CONDENSING	UPFLOW	2000 CFM	DIRECT	1	0.75 hp	Yes	CC-01	A-COIL	5.0 ton	-459.7 °F	-459.7 °F	55.0 °F	54.0 °F	10000 Btu/h	92100 Btu/h	92.1%	2	NG	2.0 psi	55.0 °F	55.0 °F	MERV-12	11.9 A	20.0 A	120 V	1	COIL MODEL NUMBER EAMXN6L21A1
(R)	F-02	STORAGE 2	241	HEIL	NMMSB1002120C	CONDENSING	UPFLOW	2000 CFM	DIRECT	1	0.75 hp	Yes	CC-02	A-COIL	5.0 ton	-459.7 °F	-459.7 °F	55.0 °F	54.0 °F	10000 Btu/h	92100 Btu/h	92.1%	2	NG	2.0 psi	55.0 °F	55.0 °F	MERV-12	11.9 A	20.0 A	120 V	1	COIL MODEL NUMBER EAMXN6L21A1

ENERGY RECOVERY VENTILATOR SCHEDULE																																						
ID	NAME	NO.	MANUFACTURER	MODEL NO.	TYPE	ARRANGEMENT	VENTILATION		SUPPLY FAN				EXHAUST FAN				SUMMER DESIGN ENERGY RECOVERY				WINTER DESIGN ENERGY RECOVERY				OA FILTER		EXHAUST FILTER		UNIT WEIGHT	MCA	MOCP	VOLT	PH	REMARKS				
							DESIGN AIRFLOW	MIN FLOW	DRIVE	QTY	POWER	ECM	ID	TYPE	NOMINAL CAP	EAT(db)	EAT(wb)	LAT(db)	LAT(wb)	INPUT	CAP	EFF	STAGES	TYPE	FUEL PRESS AVAIL	EAT(db)	LAT(db)	FILTER EFF							MCA	MOCP	VOLT	PH
ERV-01	IT / MECHANICAL	242	GREENHECK	MINICORE-10-VG	INTERIOR	END CONNECTIONS	1000 CFM	0 CFM	1000 CFM	0.00 in-wg	1	0.50 hp	Yes	0 CFM	0.00 in-wg	1	0.50 hp	Yes	-459.7 °F	-459.7 °F	-459.7 °F	-459.7 °F	NO	CONTROL	-459.7 °F	-459.7 °F	TIMED EXHAUST	MERV-8	MERV-8	245 lb	14.4 A	20.0 A	120 V	1				
ERV-02	STORAGE 2	241	GREENHECK	MINICORE-5-VG	INTERIOR	END CONNECTIONS	700 CFM	0 CFM	700 CFM	0.00 in-wg	1	0.25 hp	Yes	0 CFM	0.00 in-wg	1	0.25 hp	Yes	-459.7 °F	-459.7 °F	-459.7 °F	-459.7 °F	NO	CONTROL	-459.7 °F	-459.7 °F	TIMED EXHAUST	MERV-8	MERV-8	230 lb	6.4 A	15.0 A	120 V	1				

ELECTRIC UNIT HEATER SCHEDULE																											
ID	MANUFACTURER	MODEL NO.	TYPE	ARRANGEMENT	FAN		ELECTRIC HEATING COIL				HEATING ELEMENT				AFF ELEVATION	UNIT WEIGHT	MCA	MOCP	VOLT	PH	REMARKS						
					DESIGN AIRFLOW	QTY	MOTOR	ECM	CAP	EAT(db)	LAT(db)	QTY	POWER	SCR								EAT(db)	LAT(db)	QTY	POWER		
																										DESIGN	CONTINUOUS
EH-01	BERKO	FRC	CABINET	RECESSED MOUNT	100 CFM	1	No	5116 Btu/h	55.0 °F	102.4 °F	1	1.5 kW	No	1'-0"	29 lb	12.5 A	15.0 A	120 V	1								

FAN SCHEDULE																											
ID	NAME	NO.	MANUFACTURER	MODEL NO.	TYPE	DESCRIPTION	DESIGN AIRFLOW	WHEEL TYPE	DRIVE	MOTOR	ECM	UNIT WEIGHT	MCA	MOCP	VOLT	PH	REMARKS										
																		QTY	POWER	RPM	EAT(db)	LAT(db)					
																							QTY	POWER	RPM	EAT(db)	LAT(db)
EF-1	R/R	221	GREENHECK	SP-110-VG	CEILING	Exhaust Fan	50 CFM	FC	8"	DIRECT	0.01 hp	940	Yes	12 lb	0.3 A	15.0 A	120 V	1									
EF-2	R/R 2	236	GREENHECK	SP-110-VG	CEILING	Exhaust Fan	50 CFM	FC	8"	DIRECT	0.01 hp	940	Yes	12 lb	0.3 A	15.0 A	120 V	1									
EF-3	STORAGE 2	241	GREENHECK	SP-110-VG	CEILING	Exhaust Fan	50 CFM	FC	8"	DIRECT	0.01 hp	940	Yes	12 lb	0.3 A	15.0 A	120 V	1									

SPLIT SYSTEM CONDENSING UNIT																											
ID	NAME	MANUFACTURER	MODEL NO.	TYPE	ARRANGEMENT	NOMINAL COOLING CAP	INCLUDE CRANKCASE HEATER	COMPRESSOR				SOUND PRESS LEVEL	SEACOAST PROT	UNIT WEIGHT	MCA	MOCP	VOLT	PH	REMARKS								
								LOW AMB	REFRIGERANT	SUMMER AMB	WINTER AMB																
																				TYPE	KIT	TYPE	DBT	SEER	EER		
CU-01	GRADE	HEIL	NXA60CKG	COOLING	5 ton	No	SCROLL	Yes	R-410A	-459.7 °F	-459.7 °F	14	0	72	No	218 lb	27.5 A	40.0 A	208 V	1							
CU-02	GRADE	HEIL	NXA60CKG	COOLING	5 ton	No	SCROLL	Yes	R-410A	-459.7 °F	-459.7 °F	14	0	72	No	218 lb	27.5 A	40.0 A	208 V	1							

SPLIT SYSTEM AIR SOURCE HEAT PUMP																											
ID	NAME	MANUFACTURER	MODEL NO.	TYPE	ARRANGEMENT	NOMINAL COOLING CAP	NOMINAL HEATING CAP	INCLUDE CRANKCASE HEATER	COMPRESSOR	SUMMER AMB	WINTER AMB	SEER	HSPF	UNIT WEIGHT	MCA	MOCP	VOLT	PH	REMARKS								
																				LOW AMB	REFRIGERANT	SUMMER AMB	WINTER AMB				
																								TYPE	KIT	TYPE	DBT
HP-01	GRADE	CARRIER	38MGRQ18B-3	2 ton	18000 Btu/h	No	HEATER	Yes	-459.7 °F	-459.7 °F	22.5	0	106 lb	18.0 A	25.0 A	280 V	1										

CASSETTE DUCTLESS SCHEDULE																											
ID	NAME	MANUFACTURER	MODEL NO.	DESIGN AIRFLOW	MOTOR	COOLING COIL		UNIT WEIGHT	VOLT	PH	INTERLOCK CONDENSING UNIT ID	REMARKS															
						CAP	EAT(db)						EAT(wb)														
														DESIGN	CONTINUOUS	ESP	QTY	POWER	ECM								
CD-01	HM OFFICE	Carrier Corporation	40MBC09-3	380 CFM	1	0.00 hp	1 ton	-459.7 °F	-459.7 °F	6 lb	0 V	0	POWERED OFF OUTDOOR UNIT														
CD-02	DVM OFFICE	Carrier Corporation	40MBC09-3	380 CFM	1	0.00 hp	1 ton	-459.7 °F	-459.7 °F	6 lb	0 V	0	POWERED OFF OUTDOOR UNIT														

GRILLES, REGISTERS AND DIFFUSERS SCHEDULE																											
ID	DESCRIPTION	MANUFACTURER	MODEL NO.	MATERIAL	FINISH	SYSTEM	SPECIFICATION	NOTES																			
									RD1	PERFORATED DIFFUSER WITH DEFLECTORS	TRUS	35F	STEEL	WHITE ENAMEL	R/A	PERFORATED DIFFUSER WITH FACE MOUNTED DEFLECTORS	1. 2" x 2" SQUARE GRID										
RG12	LOUVERED GRILLE	TRUS	350FS	ALUMINUM	WHITE ENAMEL	R/A																					
SD1	3-CONE DIFFUSER	TRUS	TMS	STEEL	WHITE ENAMEL	S/A	HIGH PERFORMANCE 3-CONE DIFFUSER																				
SD2	3-CONE DIFFUSER	TRUS	TMS	STEEL	WHITE ENAMEL	S/A	HIGH PERFORMANCE 3-CONE DIFFUSER																				
SD3	ROUND DIFFUSER WITH ADJUSTABLE PATTERNS	TRUS	TMA	STEEL	WHITE ENAMEL	S/A	ROUND DIFFUSER WITH DISCHARGE PATTERNS & INNER B-CONE																				

**2018 APPENDIX B**  
**BUILDING CODE SUMMARY FOR ALL COMMERCIAL PROJECTS**  
 MECHANICAL DESIGN  
 (PROVIDE ON THE MECHANICAL SHEETS IF APPLICABLE)

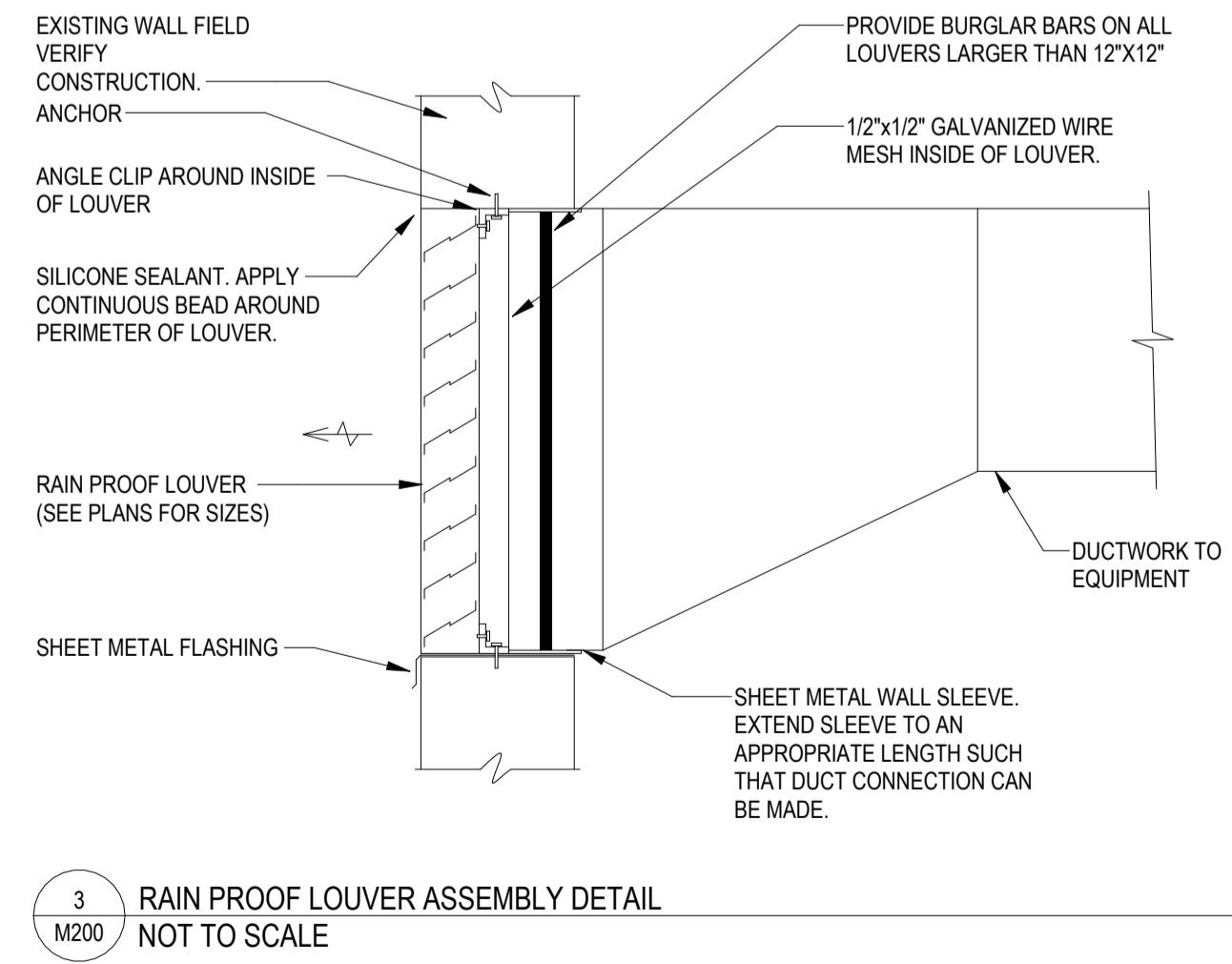
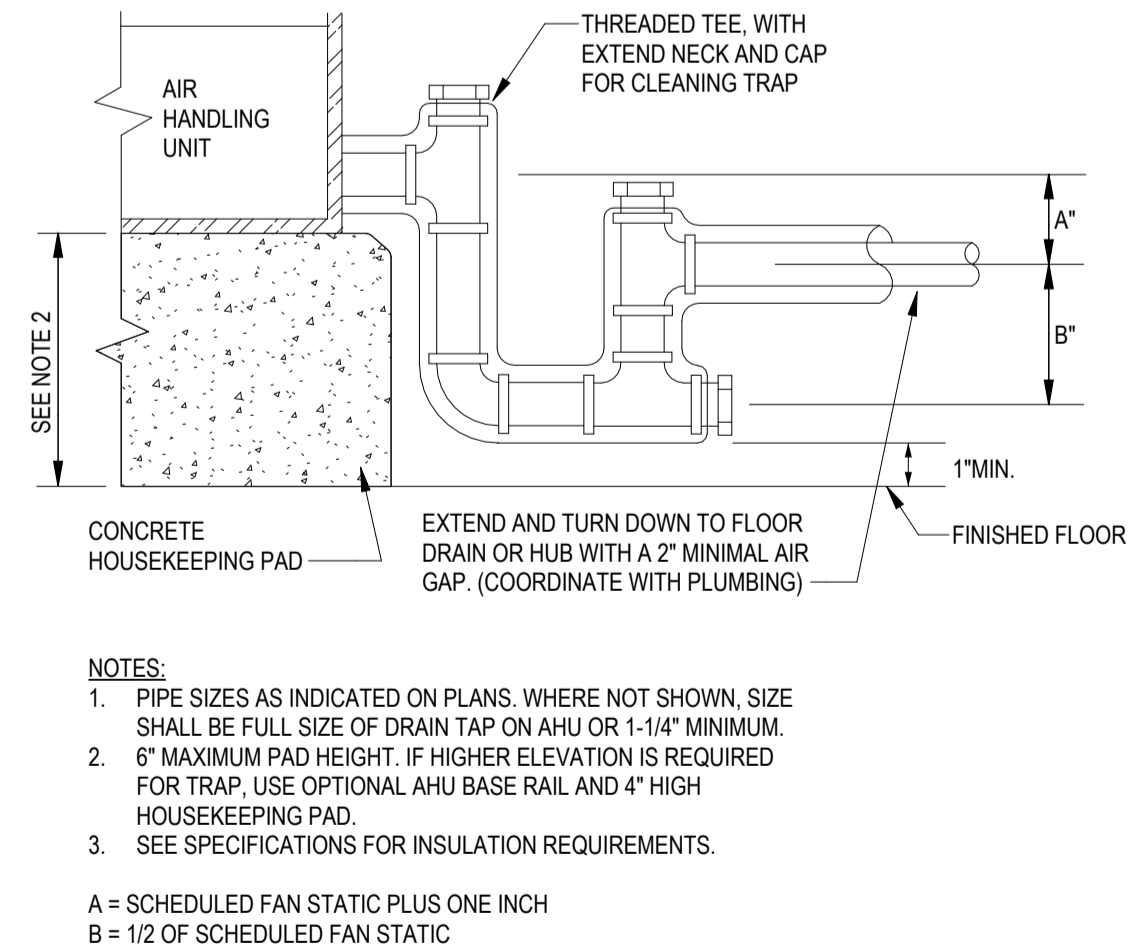
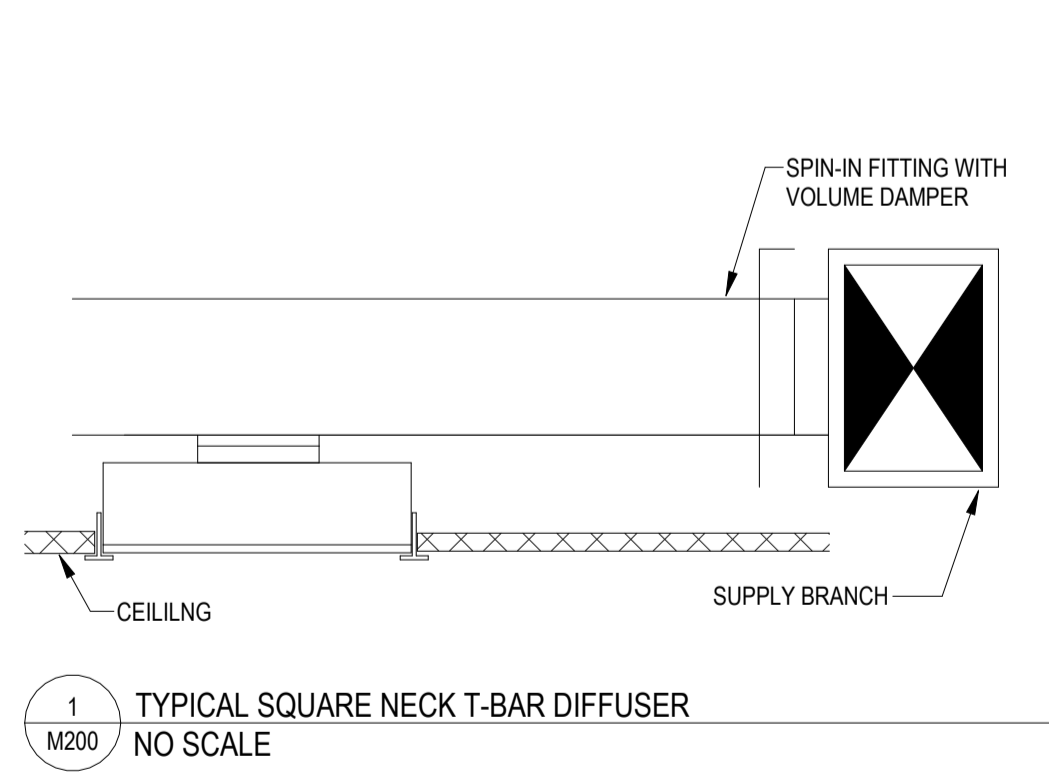
**MECHANICAL SUMMARY**  
 MECHANICAL SYSTEMS, SERVICE SYSTEMS AND EQUIPMENT

**Thermal Zone** 4A  
 winter dry bulb: 17F  
 summer dry bulb: 97F

**Interior design conditions**  
 winter dry bulb: 68F  
 summer dry bulb: 78F  
 relative humidity: 50%

**Building heating load:** 126,587 BTU  
**Building cooling load:** 108,483

**Mechanical Space Conditioning System**  
 Unitary UNITARY SPLIT, SEE MECHANICAL SCHEDULE  
 description of unit: \_\_\_\_\_  
 heating efficiency: \_\_\_\_\_  
 cooling efficiency: \_\_\_\_\_  
 size category of unit: \_\_\_\_\_  
 Boiler \_\_\_\_\_  
 Size category, if oversized, state reason: \_\_\_\_\_  
 Chiller \_\_\_\_\_  
 Size category, if oversized, state reason: \_\_\_\_\_  
 List equipment efficiencies: \_\_\_\_\_

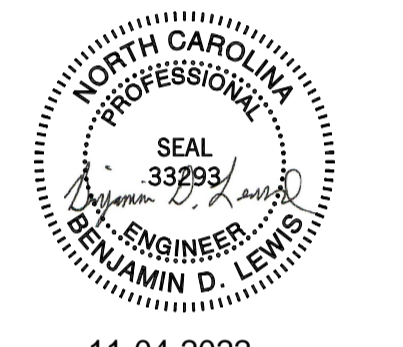


**VINTON VETERINARY HOSPITAL - ANNEX**  
 1311 EAST WASHINGTON AVE. VINTON, VA 24179

VETERINARY ARCHITECTURE  
*Unleashed*  
 A Division of RL Architecture, PLLC

PO Box 161  
 Davidson, NC 28036  
 ph. 704.756.3540  
 RLArchitecture.com

**KAİROS PROJECT GROUP, INC.**  
 120 SOMMERVILLE PARK ROAD  
 RALEIGH, NC 27603  
 NC FIRM # C-3824



11-04-2022

DRAWING TITLE:  
**HVAC SCHEDULES AND DETAILS**

THIS DRAWING IS THE PROPERTY OF RLArchitecture, PLLC AND IS NOT TO BE COPIED OR REPRODUCED IN PART OR WHOLE WITHOUT THE EXPRESSED WRITTEN PERMISSION OF RLArchitecture, PLLC.

**CONSTRUCTION DOCUMENTS**

REVISIONS		
NO.	DATE	DESCRIPTION
3	11-03-22	Revision 3

ORIGINAL SHEET SIZE: 30 X 42  
 DATE: 06-15-2022

M200





**VINTON  
VETERINARY  
HOSPITAL -  
ANNEX**

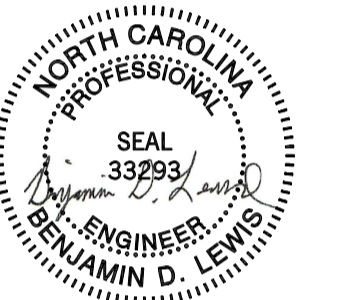
1311 EAST WASHINGTON AVE. VINTON,  
VA 24179

VETERINARY ARCHITECTURE  
*Unleashed*  
A studio of RLArchitecture, PLLC

PO Box 161  
Davidson, NC 28036

ph. 704.756.3540  
RLArchitecture.com

**KAIROS  
PROJECT  
GROUP, INC.**  
120 SOMMERVILLE PARK ROAD  
RALEIGH, NC 27603  
NC FIRM # C-3824



11-04-2022

DRAWING TITLE:  
**PLUMBING FLOOR PLAN - DOMESTIC  
WATER**

THIS DRAWING IS THE PROPERTY OF  
RLArchitecture, PLLC AND IS NOT TO BE  
COPIED OR REPRODUCED IN PART OR  
WHOLE WITHOUT THE EXPRESSED  
WRITTEN PERMISSION OF  
RLArchitecture, PLLC.

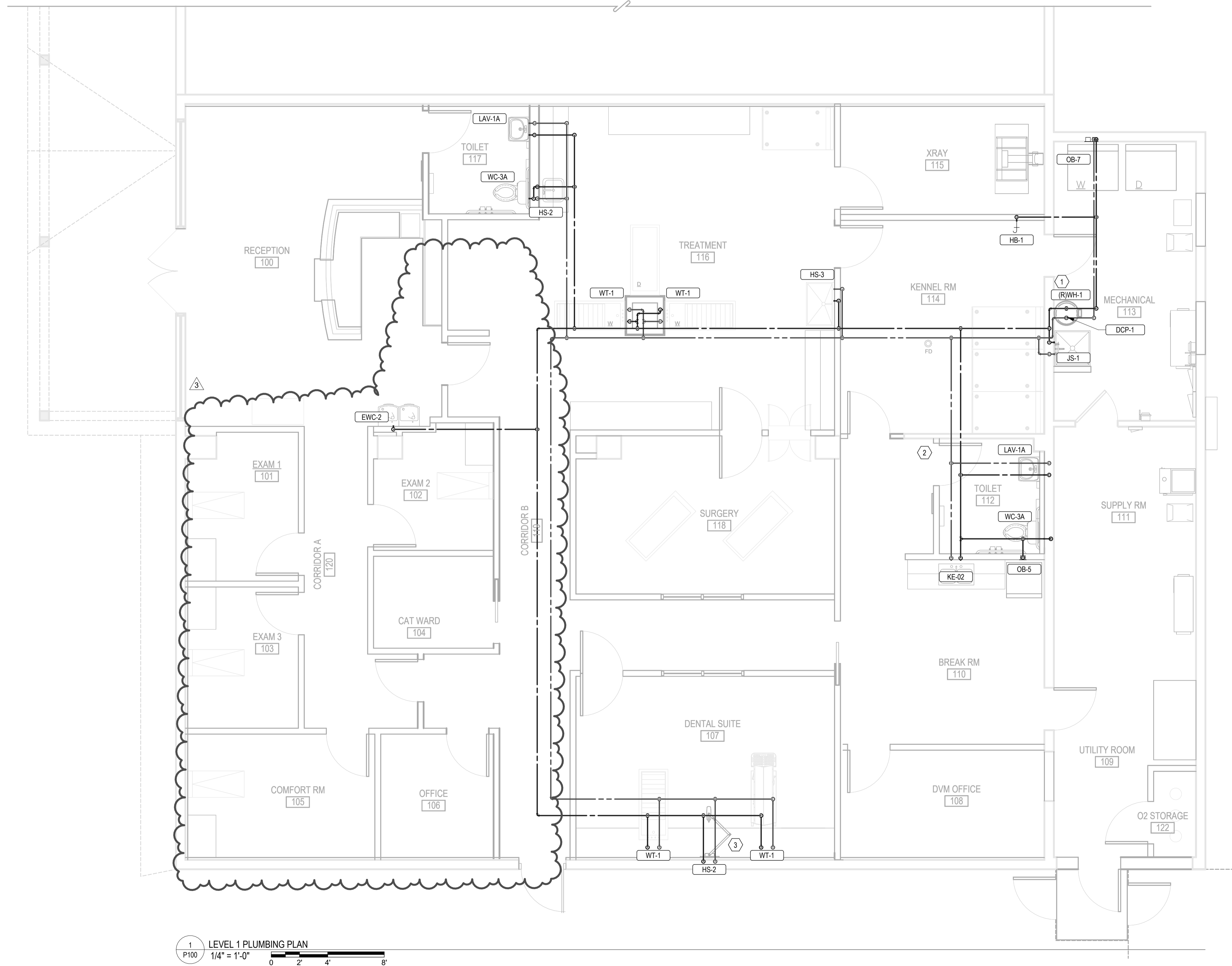
**CONSTRUCTION DOCUMENTS**

REVISIONS

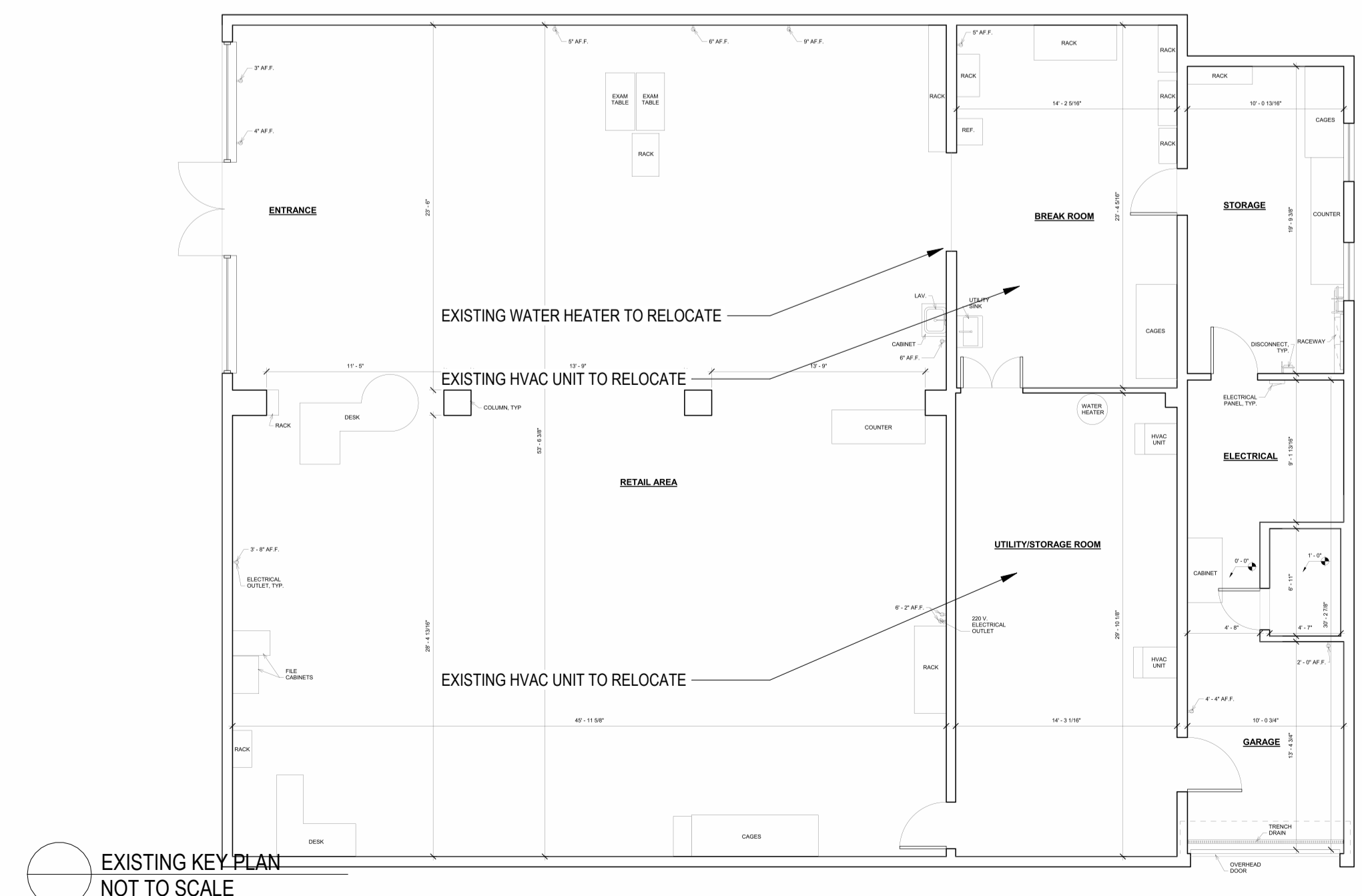
NO.	DATE	DESCRIPTION
3	11-03-22	Revision 3

ORIGINAL SHEET SIZE: 30 X 42  
DATE: 06-15-2022

- KEYNOTES**
- 1 CONTRACTOR TO RELOCATE EXISTING ELECTRIC WATER HEATER TO THIS LOCATION.
  - 2 CONTRACTOR TO EXTEND EXISTING WATER SUPPLY LINE TO NEW LOCATION OF RELOCATED EXISTING ELECTRIC WATER HEATER.
  - 3 CONTRACTOR TO INSTALL COMFORT VALVE BELOW SINK REFER TO DETAIL FOR MORE INFORMATION.

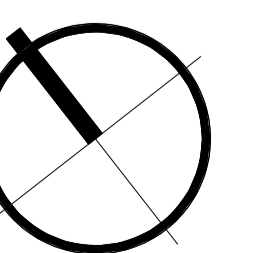


1 LEVEL 1 PLUMBING PLAN  
P100 1/4" = 1'-0"  
0 2' 4' 8'



EXISTING KEY PLAN  
NOT TO SCALE

P100



**VINTON  
VETERINARY  
HOSPITAL -  
ANNEX**

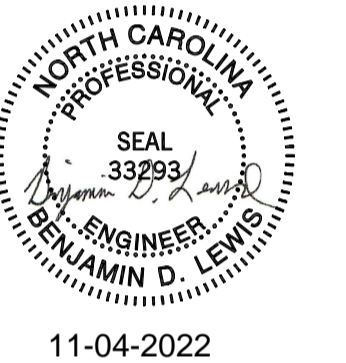
1311 EAST WASHINGTON AVE. VINTON,  
VA 24179

VETERINARY ARCHITECTURE  
*Unleashed*  
A Division of RL Architecture, PLLC

PO Box 161  
Davidson, NC 28036

ph. 704.756.3540  
RLArchitecture.com

**KAIROS  
PROJECT  
GROUP, INC.**  
120 SOMMERVILLE PARK ROAD  
RALEIGH, NC 27603  
NC FIRM # C-3824



DRAWING TITLE:  
**PLUMBING FLOOR PLAN - SANITARY**

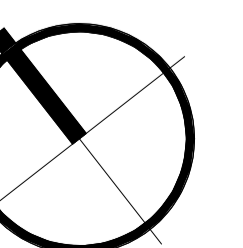
THIS DRAWING IS THE PROPERTY OF  
RLArchitecture, PLLC AND IS NOT TO BE  
COPIED OR REPRODUCED IN PART OR  
WHOLE WITHOUT THE EXPRESSED  
WRITTEN PERMISSION OF  
RLArchitecture, PLLC.

**CONSTRUCTION DOCUMENTS**

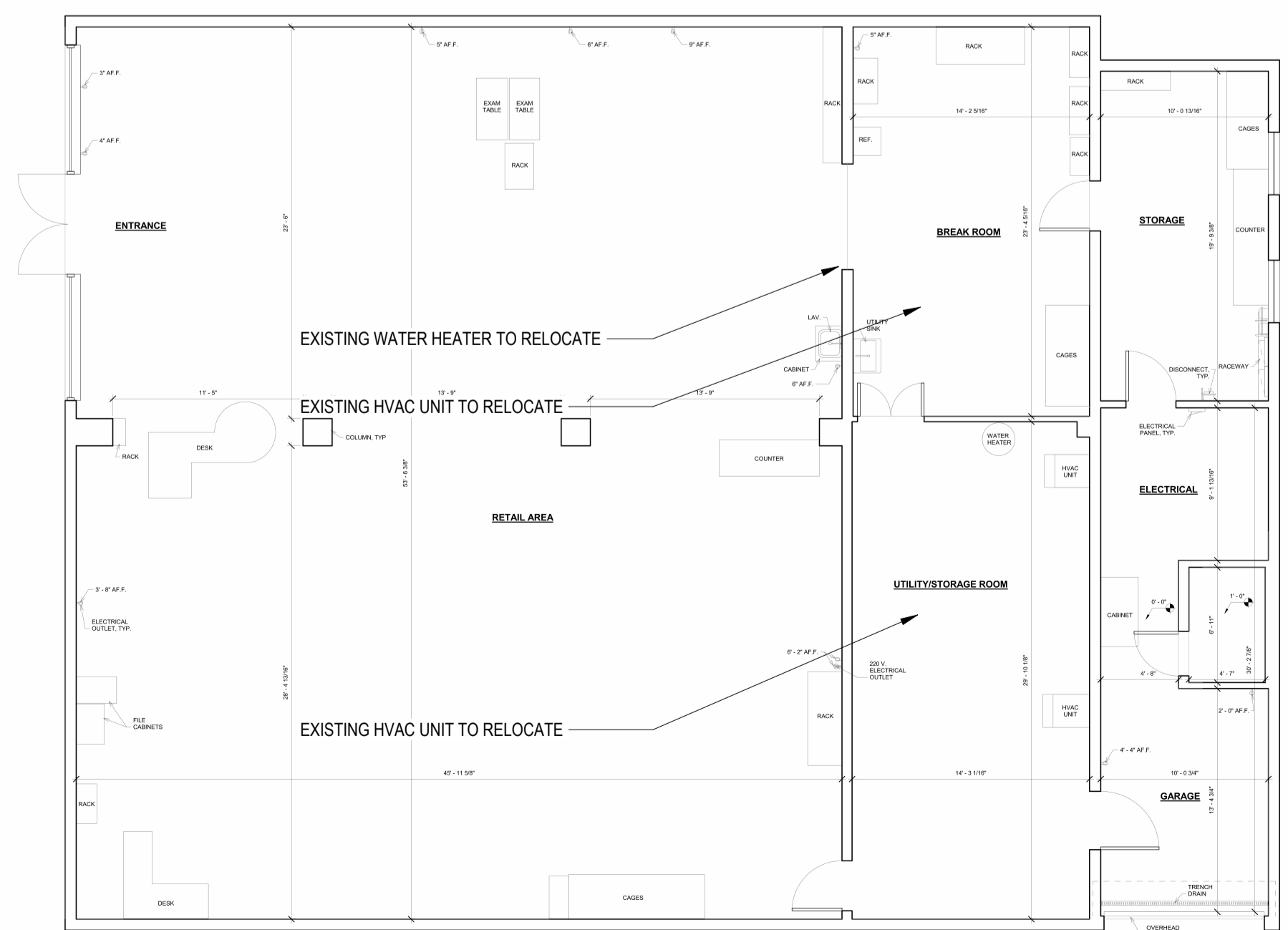
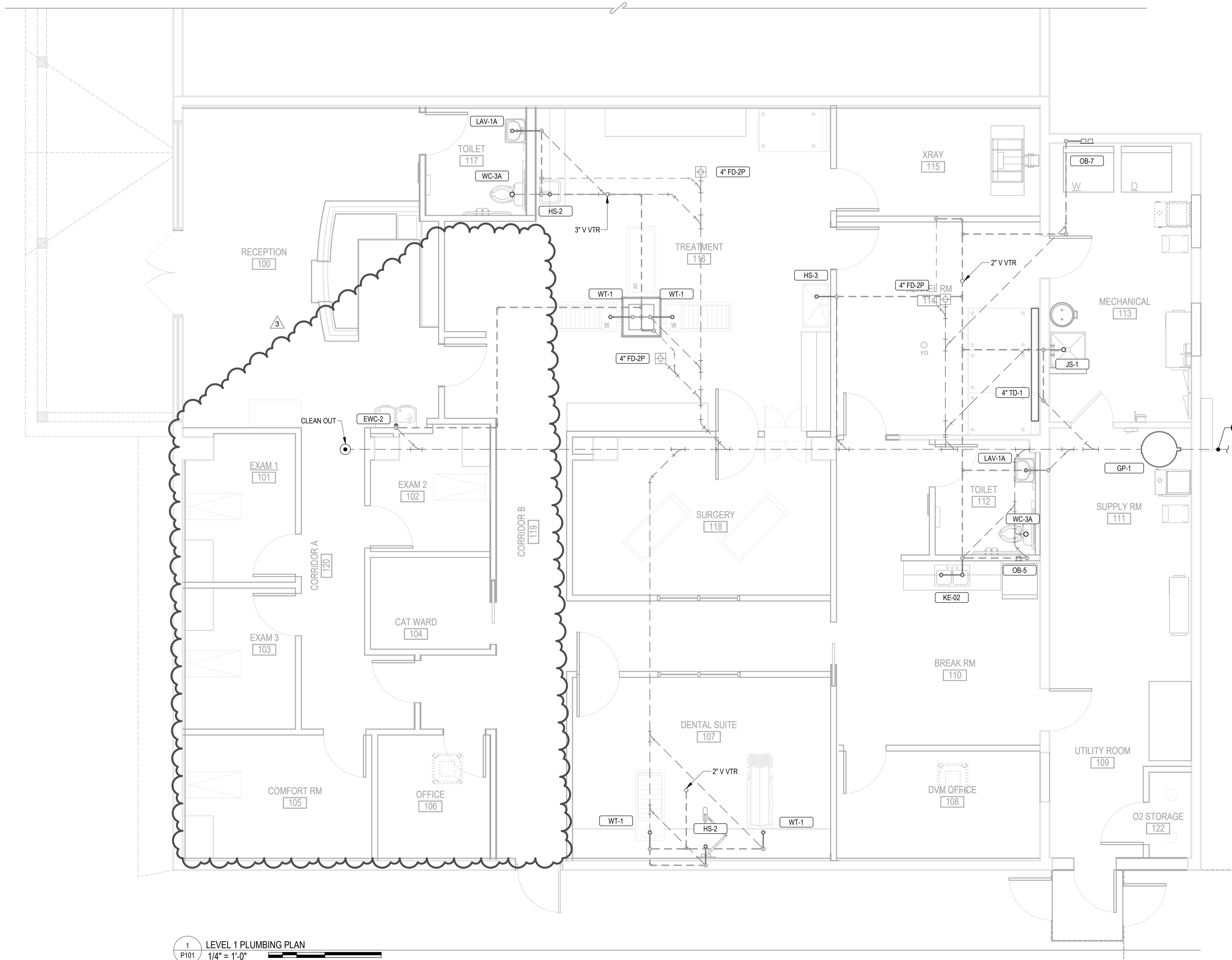
REVISIONS		
NO.	DATE	DESCRIPTION
1	08-08-22	GRINDER PUMP
2	9-13-22	Review Comments
3	11-03-22	Revision 3

ORIGINAL SHEET SIZE: 30 X 42  
DATE: 06-15-2022

P101



**GENERAL SHEET NOTE**  
1 CONTRACTOR TO LOCATE EXISTING SANITARY AND CONNECT NEW SANITARY INTO EXISTING SANITARY.



1 LEVEL 1 PLUMBING PLAN  
P101 1/4" = 1'-0"  
0 2' 4' 8'

EXISTING KEY PLAN  
NOT TO SCALE

11/14/2022 10:49:50 AM

**VINTON  
VETERINARY  
HOSPITAL -  
ANNEX**

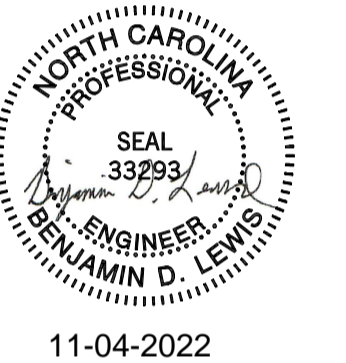
1311 EAST WASHINGTON AVE. VINTON,  
VA 24179

VETERINARY ARCHITECTURE  
*Unleashed*  
A Division of RLArchitecture, PLLC

PO Box 161  
Davidson, NC 28036

ph. 704.756.3540  
RLArchitecture.com

**KAIROS  
PROJECT  
GROUP, INC.**  
120 SOMMERVILLE PARK ROAD  
RALEIGH, NC 27603  
NC FIRM # C-3824



DRAWING TITLE:  
**PLUMBING RISER DIAGRAM**

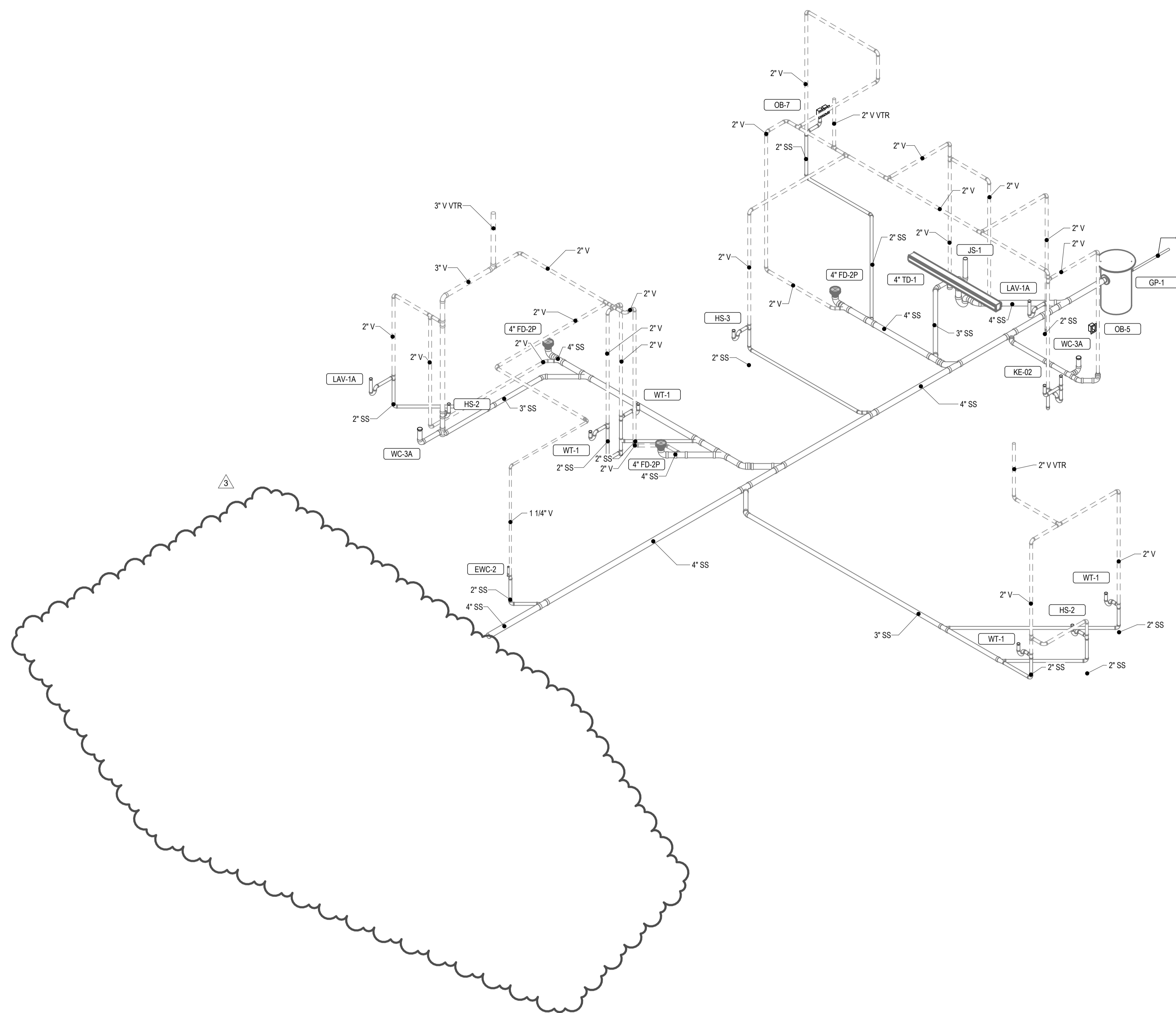
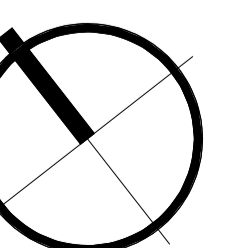
THIS DRAWING IS THE PROPERTY OF  
RLArchitecture, PLLC AND IS NOT TO BE  
COPIED OR REPRODUCED IN PART OR  
WHOLE WITHOUT THE EXPRESSED  
WRITTEN PERMISSION OF  
RLArchitecture, PLLC.

**CONSTRUCTION DOCUMENTS**

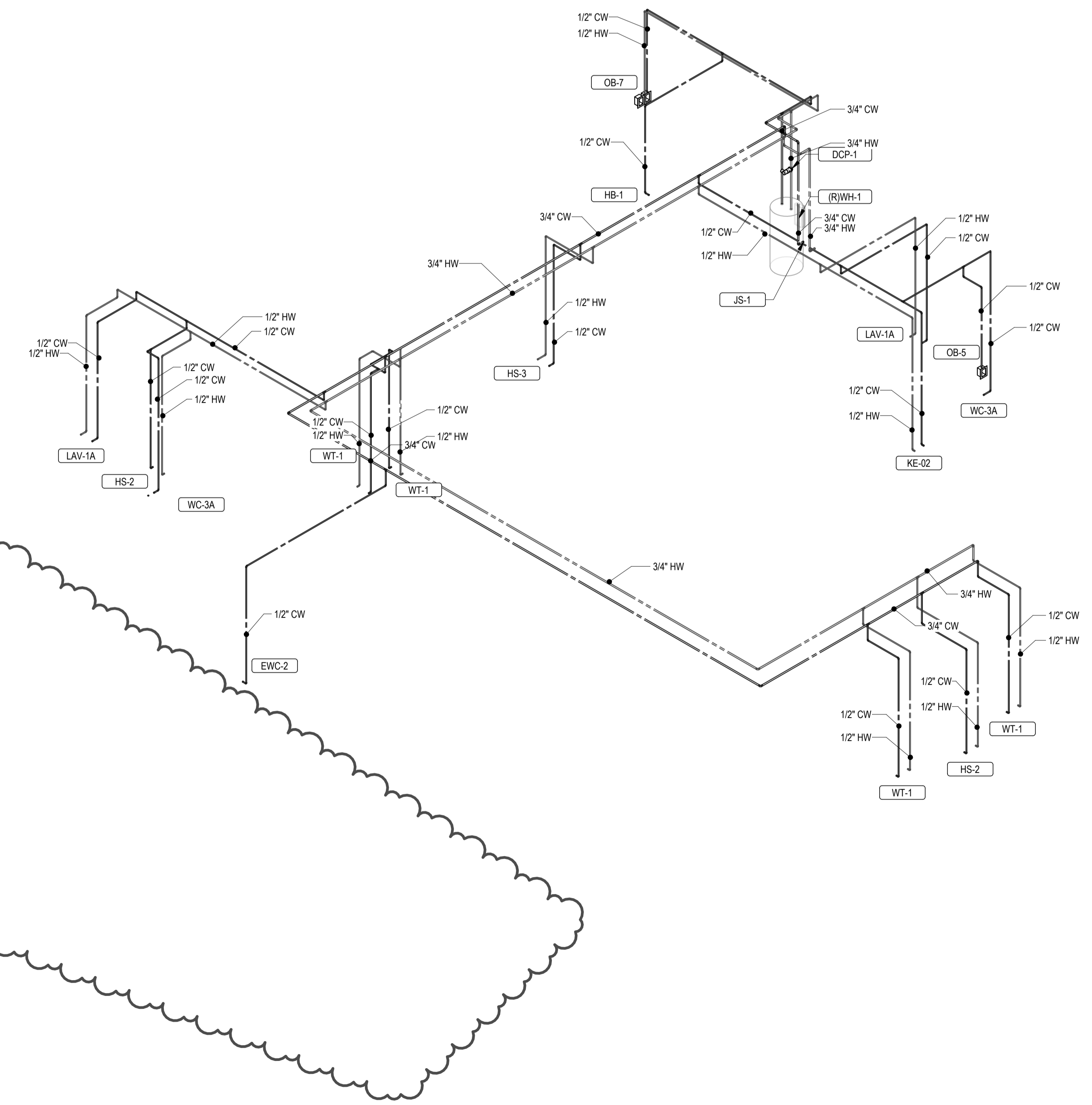
REVISIONS		
NO.	DATE	DESCRIPTION
1	08-08-22	GRINDER PUMP
2	9-13-22	Review Comments
3	11-03-22	Revision 3

ORIGINAL SHEET SIZE: 30 X 42  
DATE: 06-15-2022

P200



1 WASTE & VENT RISER DIAGRAM  
P200



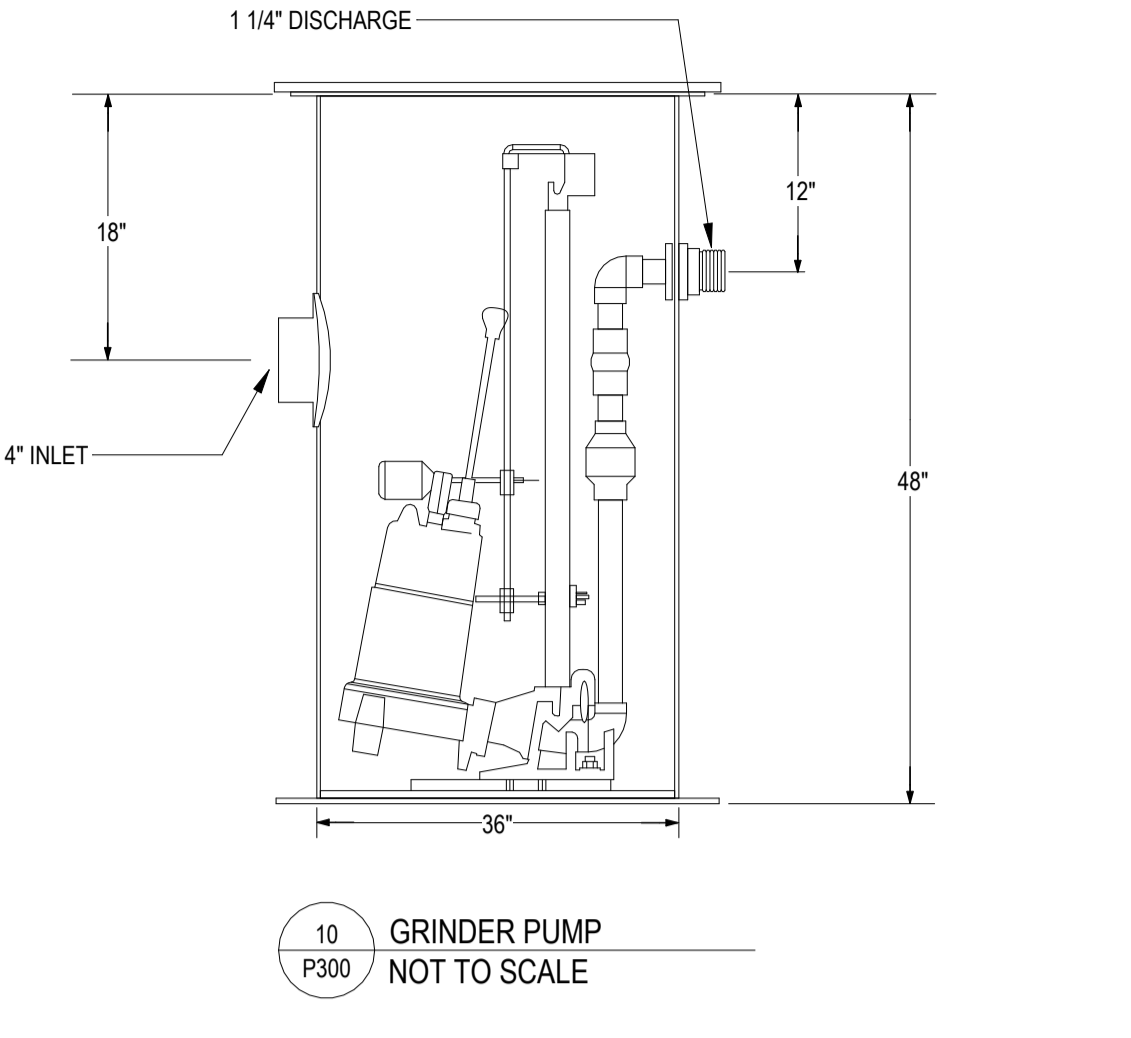
2 DOMESTIC WATER RISER DIAGRAM  
P200

**CONSTRUCTION DOCUMENTS**

REVISIONS	
NO.	DESCRIPTION
1	08-08-22 GRINDER PUMP
2	9-13-22 Review Comments
3	11-03-22 Revision 3

ORIGINAL SHEET SIZE: 30 X 42  
DATE: 06-15-2022

DOMESTIC FIXTURE SCHEDULE																					
ID	DESCRIPTION	MANUFACTURER	MODEL	QTY	MATERIAL DESCRIPTION	FINISH	TRIM			FLOW FIXTURE				FLUSH FIXTURE			COLD WATER ROUGH-IN PIPE SIZE	HOT WATER ROUGH-IN PIPE SIZE	SPECIFICATION	REMARKS	
							MANUFACTURER	MODEL	TYPE	MOTION SENSOR CONTROL	WATER FLOW	TIMER DURATION (SEC)	CWT	HWT	MAX. MWT	MIN. VOL. PER FLUSH					WASTE ROUGH-IN PIPE SIZE
EWC-2	WATER COOLER - DUAL HEIGHT	ELKAY	EZSTLWSSK	1	GALVANIZED STEEL	STAINLESS STEEL CABINET														TWO LEVEL WALL HUNG WATER COOLER WITH BOTTLE FILLING STATION. THE UNIT SHALL BE COMPLETE WITH CABINET, MOUNTING FRAME, SELF-CLOSING EASY TOUCH SIDE AND FRONT PUSHBAR CONTROLS, FLEXIGUARD SAFETY BUBBLER, REFRIGERATING SYSTEM, AIR COOLED, 100 VOLT, 60 CYCLE, SINGLE PHASE POWER CONNECTION, FULLY AUTOMATIC, COMPLETE AND READY TO OPERATE.	
HB-1	HOSE BIBB	CHICAGO FAUCET CO	952-CP	1	STAINLESS STEEL	STAINLESS STEEL														INTERIOR HOSE BIBB WITH VACUUM BREAKER, 3/4" HOSE THREAD OUTLET, LOCK SHIELD CAP, AND REMOVABLE "TEE" HANDLE. PROVIDE SHUT-OFF VALVE IN COLD WATER SUPPLY AHEAD OF HOSE BIBB.	
HS-2	HAND SINK	ELKAY	LRAD01918553	2	STAINLESS STEEL	STAINLESS STEEL														ELKAY LUSTERONE™ CLASSIC STAINLESS STEEL 19" X 18" X 5-1/2" 3-HOLE SINGLE BOWL ADA SINK WITH QUICK-CLIP. SINK IS MANUFACTURED FROM 18 GAUGE 304 STAINLESS STEEL WITH A LUSTROUS SATIN FINISH. REAR CENTER DRAIN PLACEMENT. AND BOTTOM ONLY PADS.	
HS-3	SERVICE SINK	ELKAY	ESS23192	1	STAINLESS STEEL	STAINLESS STEEL														ELKAY STAINLESS STEEL 29" X 18-1/2" WALL MOUNT SERVICE SINK WITH 12" DEPTH	
JS-1	JANITOR SINK	FIAT	MSB2424	1	MOLDED STONE	STAINLESS STEEL														SERVICE BASIN WITH CAP ON TWO SIDES, WITH CHROME PLATED 3" DRAIN AND CAST IRON TRAP. FAUCET SHALL INCLUDE PAIL HOOK AND ATMOSPHERIC VACUUM BREAKER SPOUT. FURNISH 5'-0" LENGTH OF 5-PLY GARDEN HOSE AND FITTINGS.	
LAV-1A	LAVATORY - WALL HUNG - ADA	AMERICAN STANDARD	LUCERNE	2	WHITE VITREOUS CHINA	WHITE														WALL HUNG LAVATORY WITH BACKSPASH. FAUCET HOLES ON 4" CENTERS. DECK-MOUNTED 5-PLY SENSOR, WATER TURBINE POWER WITH VANDAL RESISTANT SPRAY. EXTERNAL ASSE 1070 COMPLIANT THERMOSTATIC MIXING VALVE, GRID DRAIN, LOOSE KEY ANGLE STOPS AND SUPPLIES. INSULATE WATER AND WASTE WITH ADA INSULATION KIT. MOUNT AT ADA COMPLIANT HEIGHT.	
OB-5	ICE MAKER OUTLET BOX	SIoux CHIEF	696-RG1010MF	1	ABS PLASTIC	WHITE														FULLY RECESSED FIRE RATED ICE MAKER SUPPLY BOX WITH COVER. PROVIDE 1/4 TURN BALL VALVES AND WATER HAMMER ARRESTORS IN BOX.	
OB-7	WASHING MACHINE OUTLET BOX	SIoux CHIEF	696-R2313MF	1	ABS PLASTIC	WHITE														FULLY RECESSED FIRE RATED WASHING MACHINE SUPPLY BOX WITH COVER. PROVIDE 1/4 TURN BALL VALVES AND WATER HAMMER ARRESTORS IN BOX. PROVIDE A 2" TRAPPED STANDPIPE IN CONCEALED WALL SPACE.	
WC-3A	WATER CLOSET - FLOOR - PRESSURE ASSISTED TANK TYPE - ADA	AMERICAN STANDARD	CADET RIGHT HEIGHT	2	WHITE VITREOUS CHINA	WHITE														ELONGATED FLOOR MOUNTED PRESSURE ASSISTED TANK TYPE WATER CLOSET, WITH CHURCH 295CT ELONGATED OPEN FRONT SEAT. PROVIDE A 1/4" BRASS BALL VALVE AT WALL CONNECTION. INSTALL AT ADA COMPLIANT HEIGHT.	
WT-1	WET TREATMENT TABLE	MIDMARK	WET TABLE	4	STAINLESS STEEL	STAINLESS STEEL														MIDMARK WET TREATMENT TABLE 36", 18-GAUGE STEEL CONSTRUCTION, A BAKED-ON EPOXY FINISH, REMOVABLE HAIR TRAP, STANDARD 300-POUND LOAD CAPACITY.	
Grand total: 16										10.6 GPM											



FLOOR DRAIN SCHEDULE															
ID	DESCRIPTION	MANUFACTURER	MODEL	QTY	MATERIAL DESCRIPTION	DRAIN BODY	STRAINER	PRIMER CONNECTION	WASTE PIPE SIZE	VENT PIPE SIZE	PRIMER PIPE SIZE	SPECIFICATION	REMARKS		
														DESIGN	MIN
FD-2	FLOOR DRAIN	WATTS	FD-100-B	3	EPOXY COATED CAST IRON	NICKEL BRONZE	Yes	4"	2"	1/2"		EPOXY COATED CAST IRON FLOOR DRAIN WITH ANCHOR FLANGE, REVERSIBLE CLAMPING COLLAR WITH PRIMARY & SECONDARY WEEPHOLES, ADJUSTABLE HEAVY DUTY ROUND HEEL, PROOF NICKEL BRONZE STRAINER, AND NO HUB OUTLET.			
TD-1	TRENCH DRAIN	WATTS	DEAD LEVEL D	1	POLYPROPYLENE				4"			PRE-SLOPED TRENCH DRAIN SYSTEM WITH 6IN WIDE X 48IN LONG DUCTILE IRON FRAME, UV STABILIZED TALC-FILLED POLYPROPYLENE CHANNELS WITH 4IN NO HUB BOTTOM OR END OUTLETS. SYSTEM SHALL BE FRAME ANCHORED, WITH REINFORCED GALVANIZED SLOTTED GRATING TO SUIT DIN CLASS LOAD RATING. SYSTEM TO INCLUDE FRAME CONNECTORS, GRATE LOCKDOWNS, AND CONSTRUCTION COVERS. PROVIDE WITH MANUFACTURER'S CATCH BASIN WITH DUCTILE IRON GRATE. INSTALLATION TO BE PERFORMED IN ACCORDANCE WITH MANUFACTURER'S INSTRUCTIONS AND LOCAL BUILDING CODE.			
Grand total: 4															

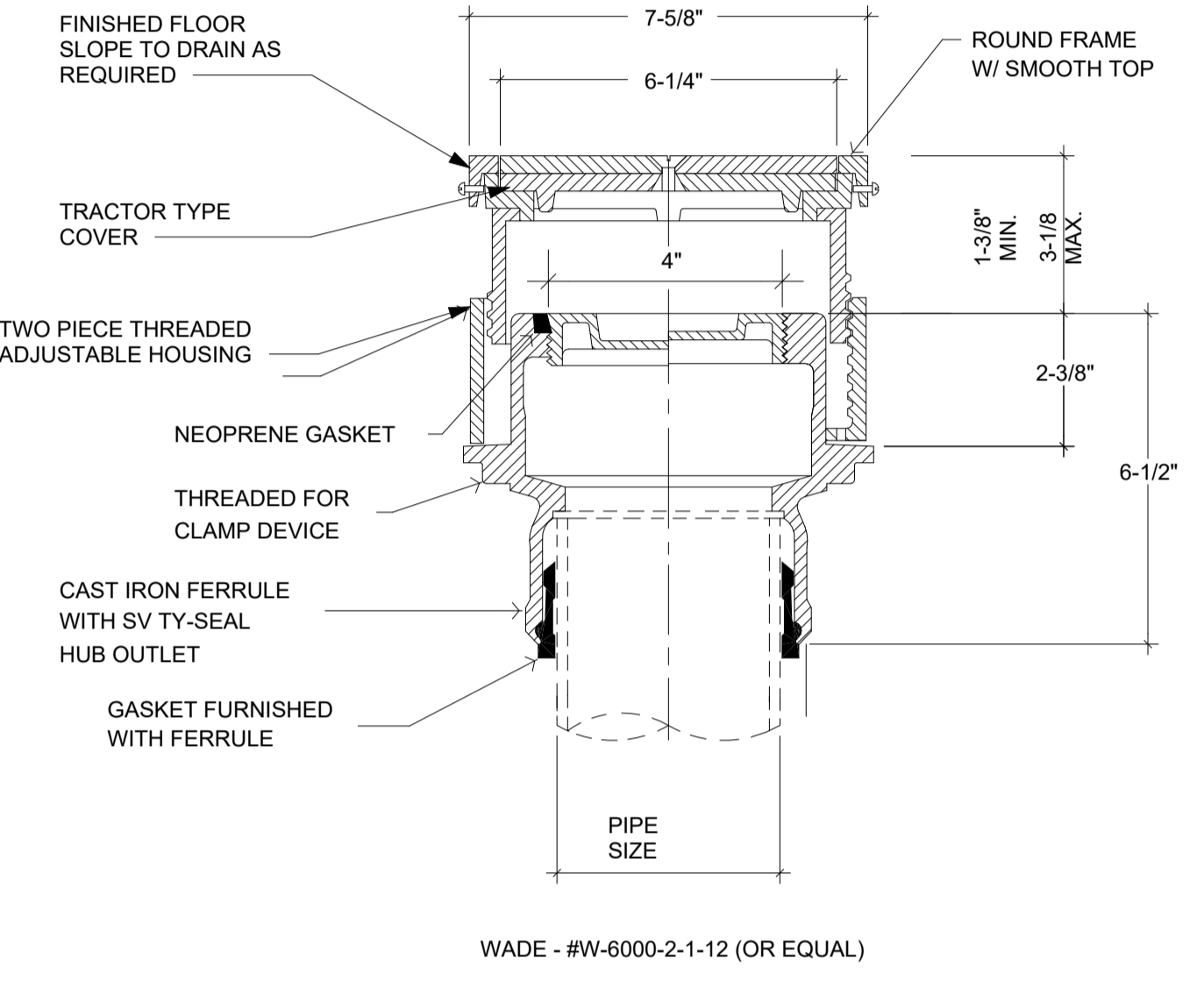
ELECTRIC WATER HEATER SCHEDULE																			
ID	LOCATION	NAME	NO.	MANUFACTURER	MODEL NO.	TYPE	ELECTRIC HEAT EXCHANGER			HEATING ELEMENT			UNIT WEIGHT	FLA	MCA	MCCP	VOLT	PH	REMARKS
							HEATING CAP	FLOW DESIGN	STORAGE	MAX TEMP	QTY	POWER							
(R) WH-1	IT / MECHANICAL	242	RHEEM	PROE50 M2 RH95	STORAGE	0.0 kW							447 lb	0.0 A	0.0 A	15.0 A	208 V	1	PROVIDE ASSE 1017 COMPLIANT MIXING VALVE, POWERS SERIES LF3H OR EQUAL

DOMESTIC CIRCULATING PUMP SCHEDULE																					
ID	LOCATION	NAME	NO.	SYSTEM	MANUFACTURER	MODEL NO.	TYPE	PUMP			MOTOR	OPTIONS			UNIT WEIGHT	FLA	MCA	MCCP	VOLT	PH	REMARKS
								DESIGN	FLOW	HEAD		SPEED (RPM)	DRIVE TYPE	POWER							
DCP-1	IT / MECHANICAL	242	DOM. HW-R	Grundfos	Grundfos	UP 15-10 SUP7/PLC	INLINE	6.2 GPM	5.3 FT	0	DIRECT	28 W	Yes	6 lb	Yes	4.4 A	5.5 A	15.0 A	120 V	1	

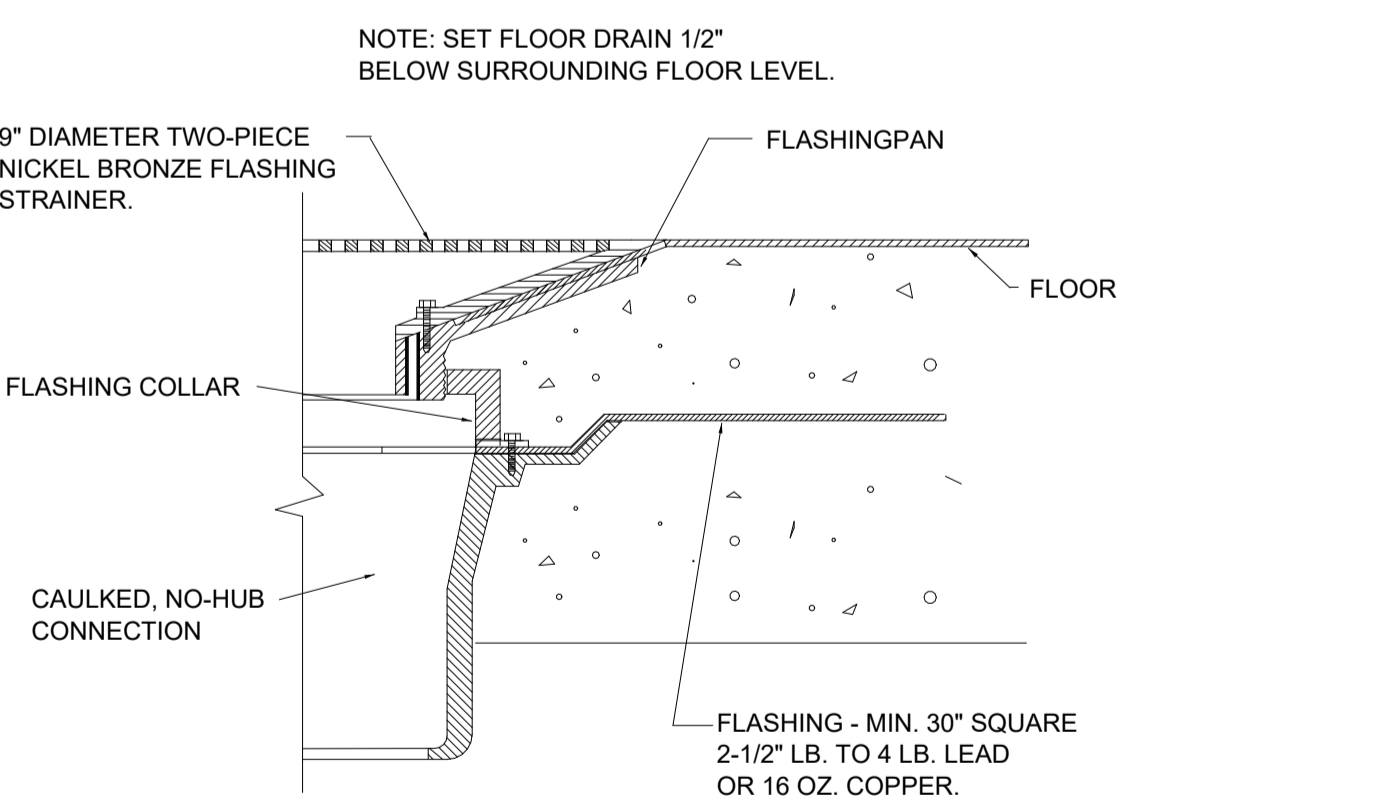
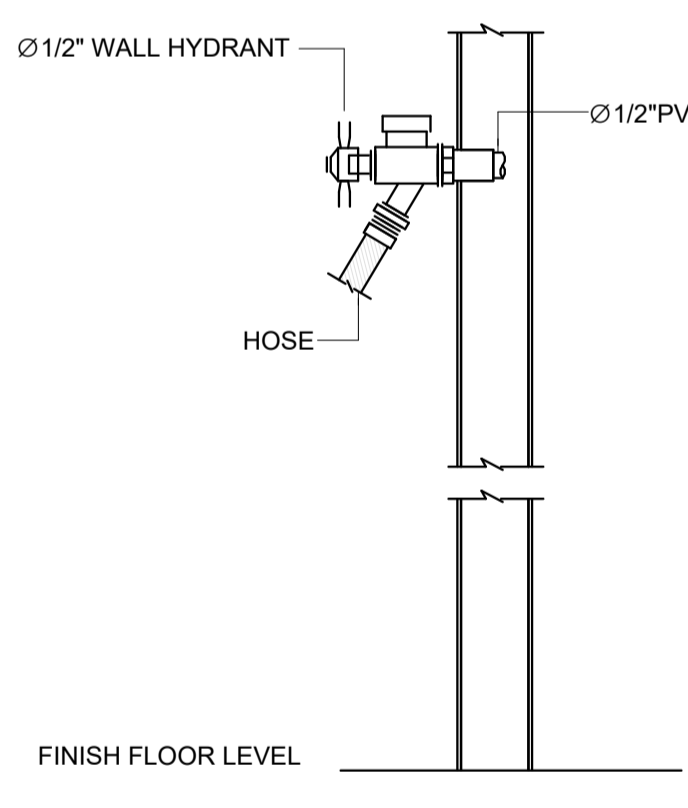
GRINDER PUMP SCHEDULE																		
ID	LOCATION	NAME	NO.	SYSTEM	MANUFACTURER	MODEL NO.	PUMP			MOTOR	BASIN			UNIT WEIGHT	FLA	VOLT	PH	REMARKS
							DESIGN	FLOW	HEAD		QTY	POWER	ECM					
GP-1	STORAGE	241	SANITARY	LIBERTY PUMPS, INC.	2448	50.0 GPM	40.0 FT	1	2.00 hp	Yes	24"	48"	220 lb	15.0 A	208 V	1	PRE-MOUNTED FLOAT SWITCHES FOR PUMP CONTROL AND ALARM. 4" FIBERGLASS HUB WITH 4" RUBBER PIPE SEAL, 1-1/4" DISCHARGE, FACTORY PRE-ASSEMBLED GUIDE RAIL SYSTEM, INTEGRAL CHECK VALVE, GALVANIZED GUIDE RAIL PIPE (STAINLESS OPTIONAL), FACTORY PRE-ASSEMBLED SCHEDULE 80 PVC DISCHARGE PIPING WITH BALL VALVE, FIBERGLASS BASIN WITH ANTI-OFFGAS COLLAR, STRUCTURAL FOAM COVER - 1000 LB. LOAD RATING (STEEL OPTIONAL), ALL STAINLESS-STEEL SUPPORTS AND BRACKETS PRE-MOUNTED, NEMA 4X JUNCTION BOX FOR ELECTRICAL CONNECTIONS, PRE-MOUNTED, STAINLESS-STEEL CHAIN FOR PUMP LIFT-OUT	

WATER SUPPLY FIXTURE UNIT SUMMARY														
ID	FIXTURE DESCRIPTION	QTY	PIPE SIZE		DFU DEMAND		CW/FU DEMAND		HWFU DEMAND		WSFU DEMAND			
			CU	HW	UNIT	TOTAL	UNIT	TOTAL	UNIT	TOTAL	UNIT	TOTAL		
EWC-2	WATER COOLER - DUAL HEIGHT	1	1/2"	1/2"	0.5	0.5	0.5	0.5	0	0	0.5	0.5		
HB-1	HOSE BIBB	1	1/2"	1/2"	0	0	2.5	2.5	0	0	2.5	2.5		
HS-2	HAND SINK	2	1/2"	1/2"	2	4	1.125	2.25	1.125	2.25	1.5	3		
HS-3	SERVICE SINK	1	1/2"	1/2"	2	2	1.125	1.125	1.125	1.125	1.5	1.5		
JS-1	JANITOR SINK	1	3/4"	3/4"	3	3	2.25	2.25	2.25	2.25	3	3		
KE-02	2-COMPARTMENT SINK	1	1/2"	1/2"	4	4	1.5	1.5	1.5	1.5	2	2		
LAV-1A	LAVATORY - WALL HUNG - ADA	2	1/2"	1/2"	1	2	0.75	1.5	0.75	1.5	1	2		
OB-5	ICE MAKER OUTLET BOX	1	1/2"	1/2"	0	0	0.5	0.5	0	0	0.5	0.5		
OB-7	WASHING MACHINE OUTLET BOX	1	1/2"	1/2"	3	3	3	3	3	3	4	4		
WC-3A	WATER CLOSET - FLOOR - PRESSURE ASSISTED TANK TYPE - ADA	2	1/2"	1/2"	4	8	2.5	5	0	0	2.5	5		
WT-1	WET TREATMENT TABLE	4	1/2"	1/2"	2	8	1.125	4.5	1.125	4.5	1.5	6		
Grand total: 17					34.5		24.625		16.125		30			

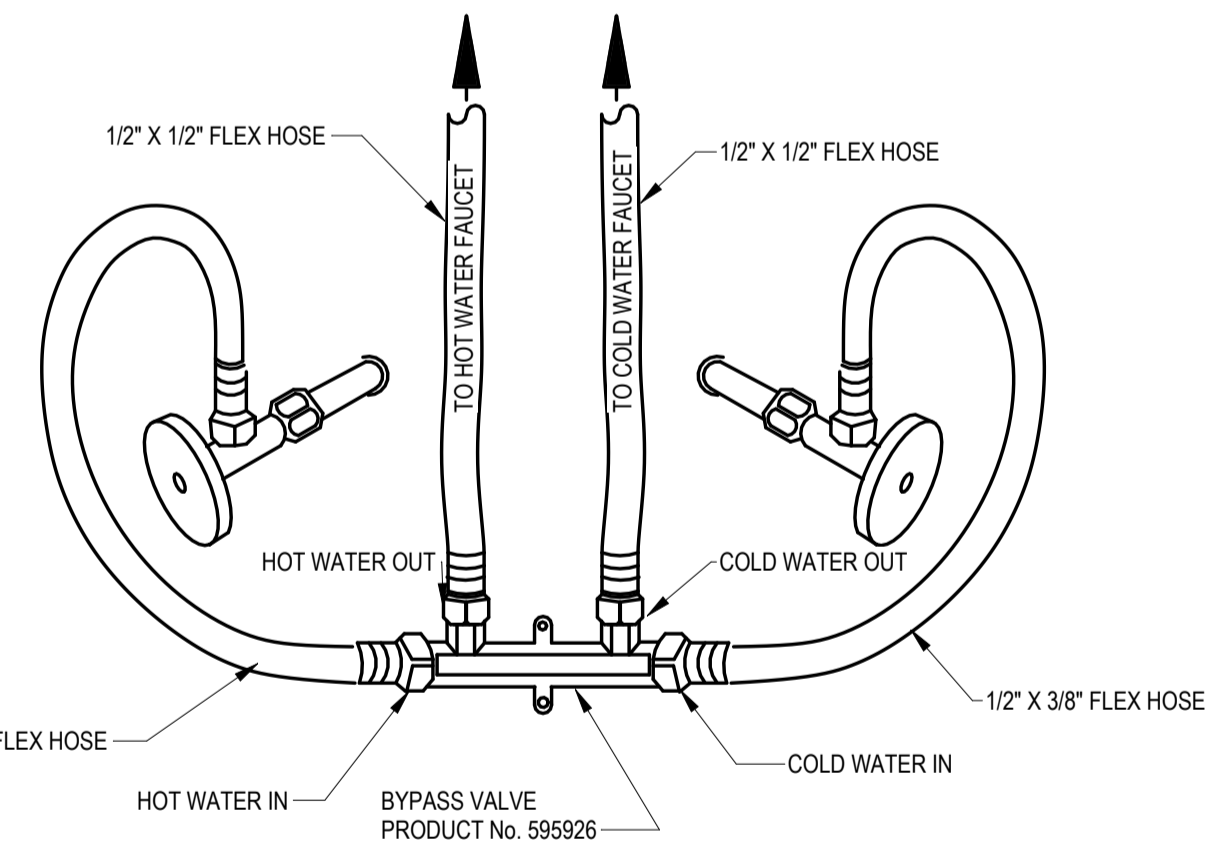
DRAINAGE FIXTURE UNIT SUMMARY				
ID	FIXTURE DESCRIPTION	QTY	WASTE PIPE SIZE	DFU DEMAND
EWC-2	WATER COOLER - DUAL HEIGHT	1	1 1/4"	0.5
FD-2	FLOOR DRAIN	3	4"	8
HS-2	HAND SINK	2	2"	2
HS-3	SERVICE SINK	1	2"	2
JS-1	JANITOR SINK	1	3"	3
KE-02	2-COMPARTMENT SINK	1	2"	4
LAV-1A	LAVATORY - WALL HUNG - ADA	2	2"	1
OB-7	WASHING MACHINE OUTLET BOX	1	2"	3
WC-3A	WATER CLOSET - FLOOR - PRESSURE ASSISTED TANK TYPE - ADA	2	3"	4
WT-1	WET TREATMENT TABLE	4	2"	2
Grand total: 18		58.5		



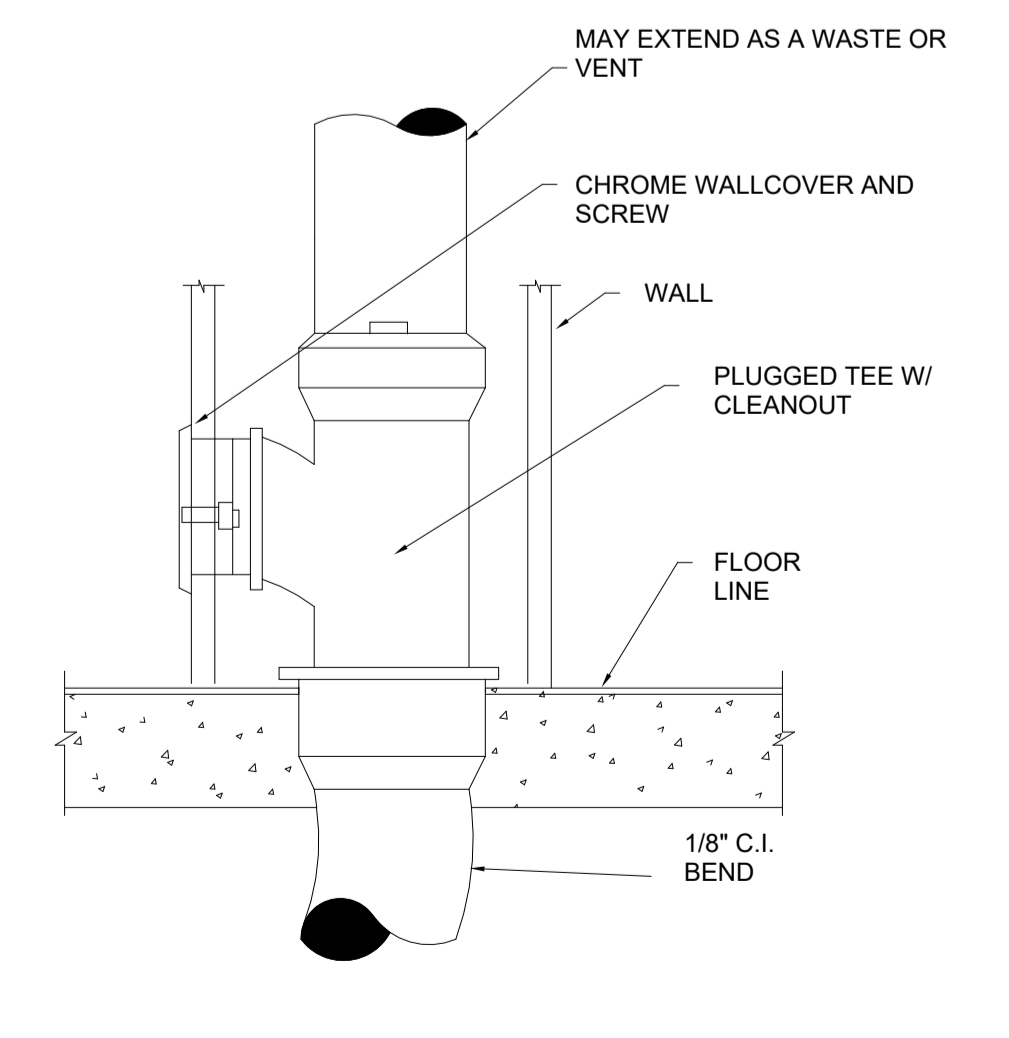
1 FLOOR CLEAN OUT NOT TO SCALE



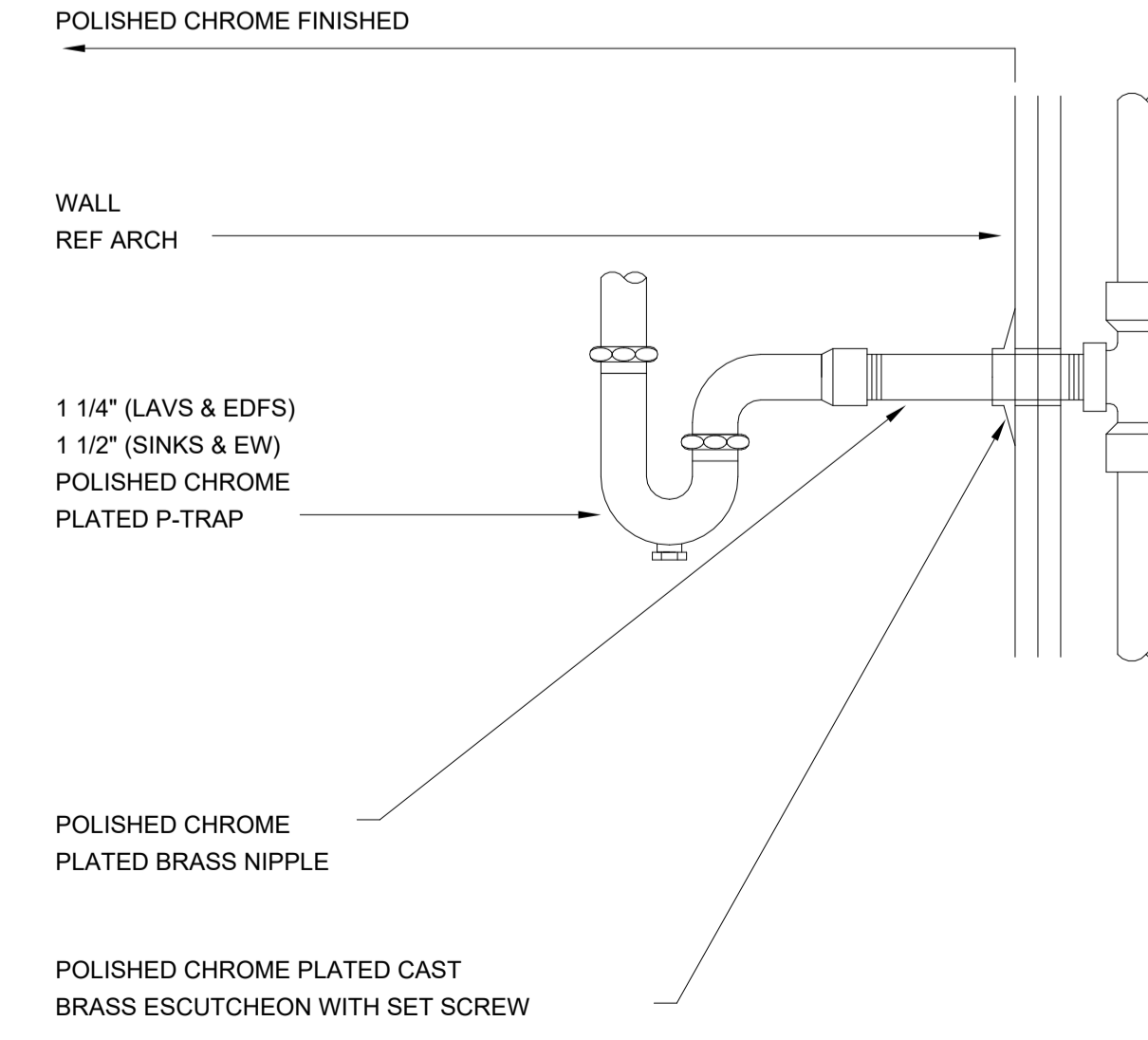
2 FLOOR DRAIN DETAIL NOT TO SCALE



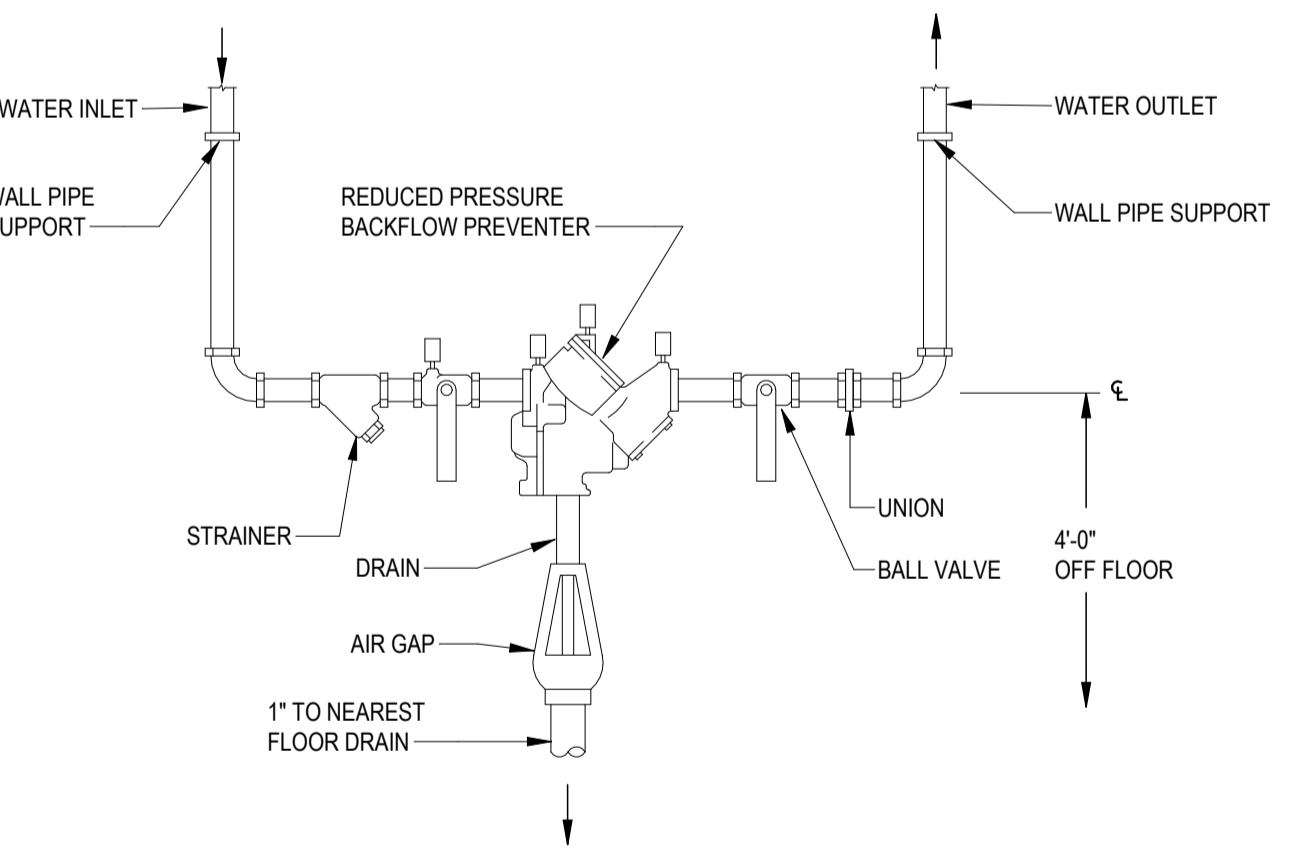
4 SINK BY-PASS VALVE CONNECTION DETAIL NOT TO SCALE



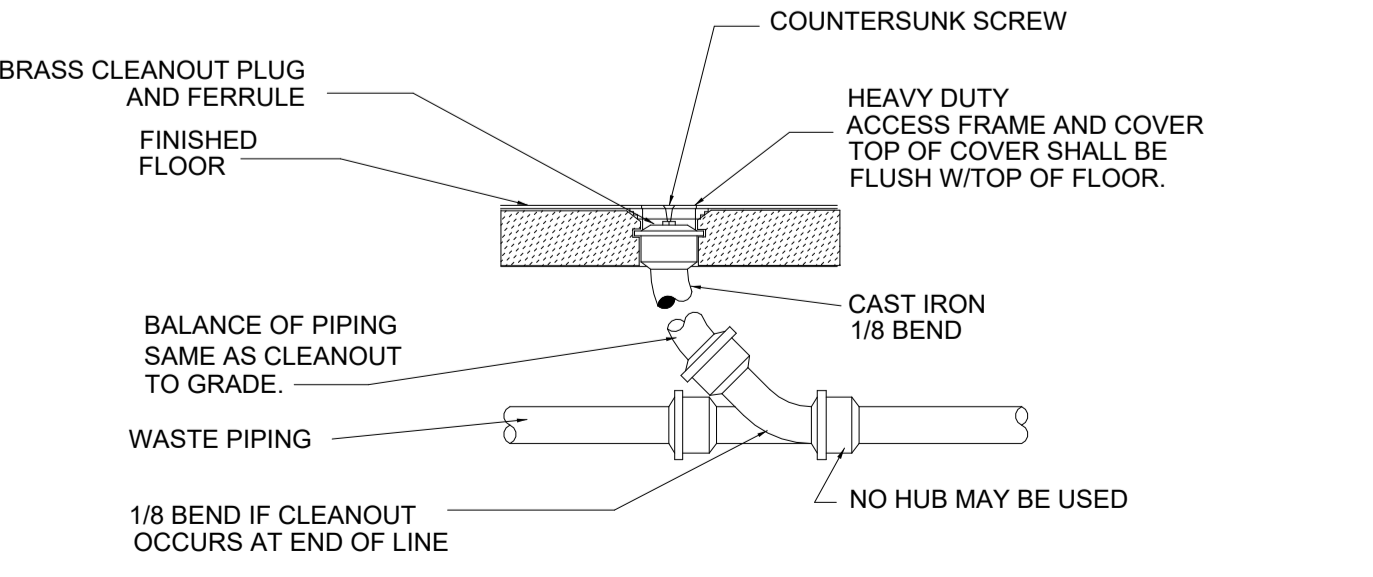
7 WALL CLEANOUT DETAIL NOT TO SCALE



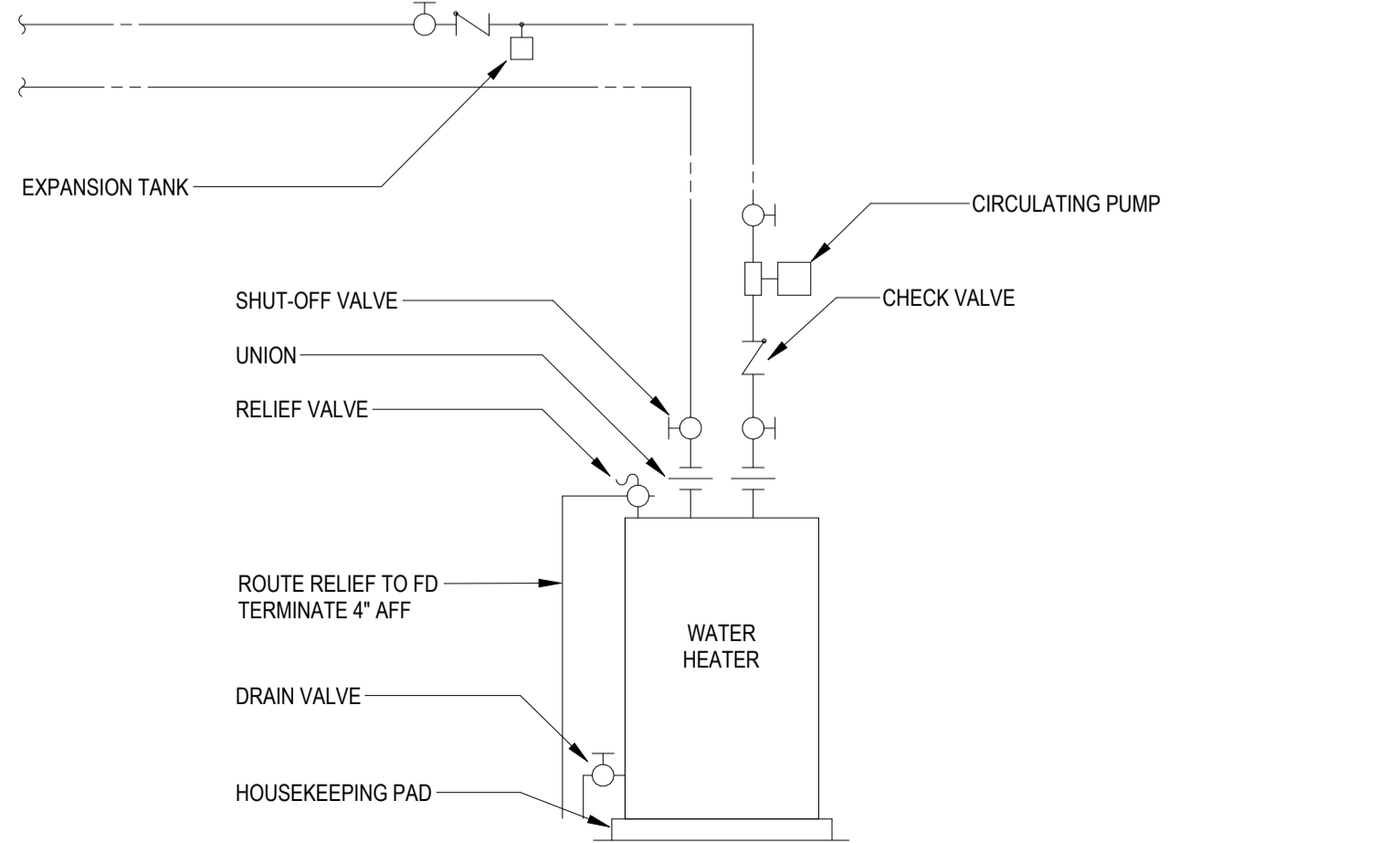
8 TYPICAL DRAIN PIPING DETAIL NOT TO SCALE



5 BACKFLOW PREVENTER DETAIL NOT TO SCALE



6 FLOOR CLEANOUT DETAIL NOT TO SCALE



9 WATER HEATER PIPING DETAIL - SINGLE W/RECIRCULATION NOT TO SCALE