

ROUND	CFM RANGE	SIZE	RECTANGULAR	CFM RANGE
	115 - 235	8" x 8"		205 - 300

NOTE: ALL SYSTEMS TO BE INSTALLED THROUGH EXISTING DUCTWORK WHERE POSSIBLE. SEE EXISTING LAYOUT FOR DUCTWORK LAYOUT.

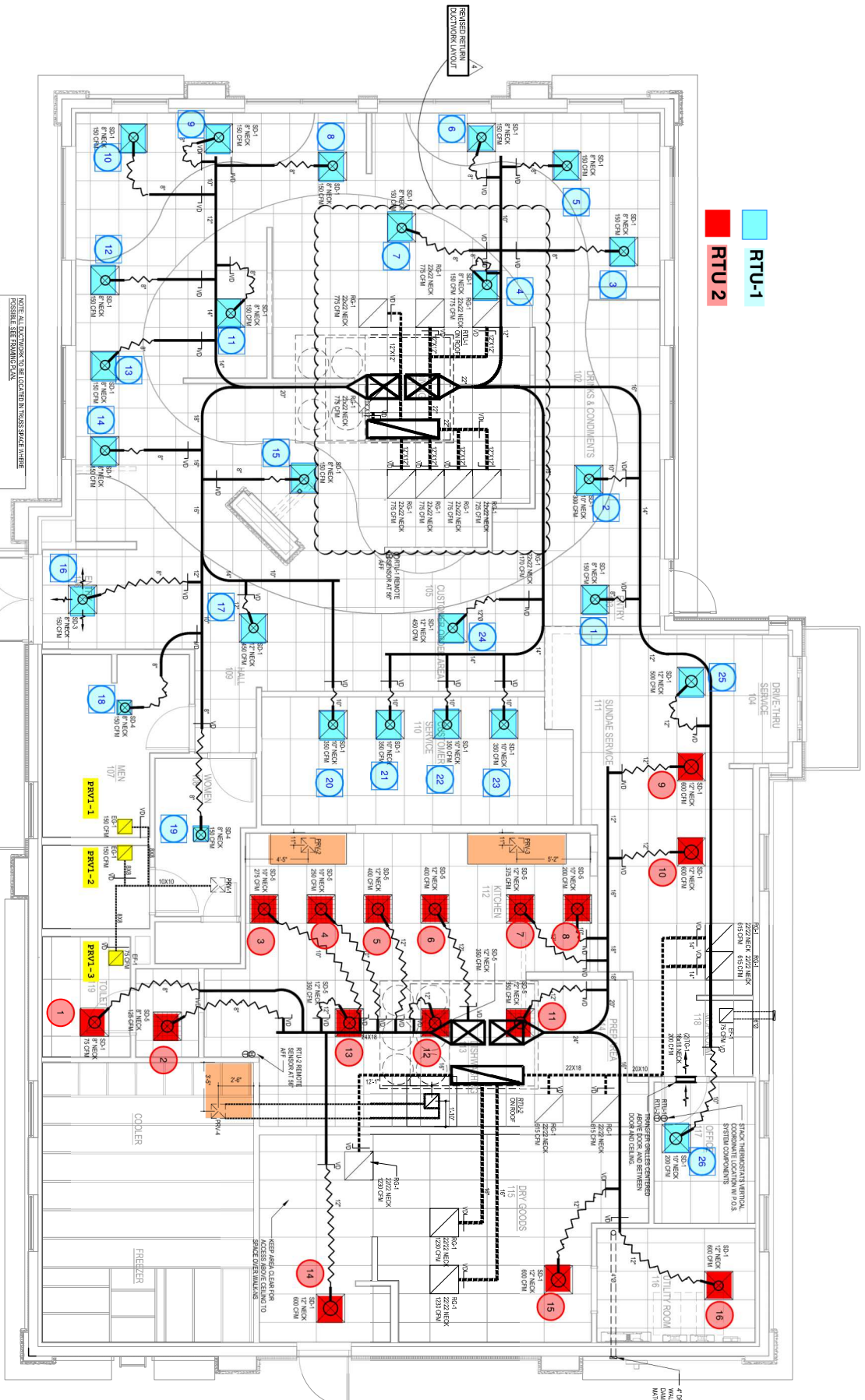
HANG NETWORKS RECOMMENDED BY CORPORATE IDENTIFICATION GUIDELINES.

2. ALL NETWORKS TO BE INSTALLED THROUGH EXISTING DUCTWORK WHERE POSSIBLE. SEE EXISTING LAYOUT FOR DUCTWORK LAYOUT.

3. ALL NETWORKS TO BE INSTALLED THROUGH EXISTING DUCTWORK WHERE POSSIBLE. SEE EXISTING LAYOUT FOR DUCTWORK LAYOUT.

4. ALL NETWORKS TO BE INSTALLED THROUGH EXISTING DUCTWORK WHERE POSSIBLE. SEE EXISTING LAYOUT FOR DUCTWORK LAYOUT.

5. ALL NETWORKS TO BE INSTALLED THROUGH EXISTING DUCTWORK WHERE POSSIBLE. SEE EXISTING LAYOUT FOR DUCTWORK LAYOUT.



RTU-1

RTU 2

7. BRASS EXHAUST TO HODS ON DRIVE THRU SERVICE WALL CAP TO W/CH/VENT/HRK