



SUBMITTAL

Project

Walgreens (PR) - #17240 Lexington, NC

Date

Monday, July 21, 2025

Notes:

1. Ultra-Low Leak Economizer provided to meet ASHRAE 90.1-2013 Standard.
2. Direct replacement, curb adapter(s) not required.
3. RTU-1 quoted as standard efficiency unit to be direct fit to existing curb.

Table Of Contents

Project: Walgreens (PR) - #17240 Lexington, NC
Prepared By:

07/21/2025
11:19AM

RTU-1	3
Unit Report	4
Certified Drawing.....	5
Performance Summary.....	8
RTU-2	12
Unit Report	13
Certified Drawing.....	14
Performance Summary.....	17
RTU-3	21
Unit Report	22
Certified Drawing.....	23
Performance Summary.....	26
RTU-4	30
Unit Report	31
Certified Drawing.....	32
Performance Summary.....	35

RTU-1

**Tag Cover Sheet
Unit Report
Certified Drawing
Performance Report**

Unit Report For RTU-1

Project: Walgreens (PR) - #17240 Lexington, NC
 Prepared By:

07/21/2025
 11:19AM

Unit Parameters

Unit Model:..... **48FEEN14B3A5-3W4Q0**
 Unit Size:..... **14 (12.5 Tons)**
 Volts-Phase-Hertz:..... **208-3-60**
 Heating Type:..... **Gas**
 Refrigerant:..... **R-454B**
 Heat Control:..... **Medium Gas Heat**
 Duct Cfg:..... **Vertical Supply / Vertical Return**
 DX Options:**Single Circuit with Humidi-MiZer, Two Stage**

Cooling.....

Lines and Filters

Gas Line Size: **3/4**
 Condensate Drain Line Size: **3/4**
 Return Air Filter Type: **Throwaway**
 Return Air Filter Quantity: **4**
 Return Air Filter Size: **20 x 20 x 2**

Selection includes construction throwaway filter into the base fan curve.

Unit Configuration

Medium Gas Heat
 Single Circuit with Humidi-MiZer, Two Stage Cooling
 RA Smoke Detector
 High Static - EcoBlue Vane Axial Fan
 Al/Cu - Al/Cu
 SystemVu Controller
 ULL Enthalpy Economizer with Barometric Relief
 Hinged Panels and Unpowered Convenience Outlet
 Phase Monitor/Protection & Non-Fused Disconnect
 Standard Packaging
 Humidi-MiZer™ Adaptive Dehumidification System
 UL60335-2-40 approved R-454B Dissipation board and leak sensor included as standard

Warranty Information

1-Year parts(std.)
 5-Year compressor parts(std.)
 10-Year heat exchanger - Aluminized(std.)
 3-Year SystemVu
COMPLETE UNIT YEAR 2-5 PARTS ONLY

Ordering Information

Part Number	Description	Quantity
48FEEN14B3A5-3W4Q0	Rooftop Unit	1

Dimensions (ft. in.) & Weight (lb.) ***

Unit Length:..... **7' 4.125"**
 Unit Width:..... **4' 11.5"**
 Unit Height:..... **4' 1.375"**
Total Operating Weight:..... 1059 lb

*** Weights and Dimensions are approximate. Weight does not include unit packaging. Approximate dimensions are provided primarily for shipping purposes. For exact dimensions and weights, refer to appropriate product data catalog.

Certified Drawing for RTU-1

Project: Walgreens (PR) - #17240 Lexington, NC
 Prepared By:

07/21/2025
 11:19AM

- NOTES:
1. DIMENSIONS ARE IN INCHES. DIMENSIONS IN [] ARE IN MILLIMETERS.
 2. CENTER OF GRAVITY
 3. DIRECTION OF AIR FLOW
 4. ALL VIEW DRAWN USING 3RD ANGLE

Carrier

THIS DOCUMENT IS THE PROPERTY OF CARRIER CORPORATION AND IS DELIVERED UPON THE EXPRESS CONDITION THAT THE CONTENTS WILL NOT BE DISCLOSED OR USED WITHOUT CARRIER CORPORATION'S WRITTEN CONSENT.

SUBMISSION OF THESE DRAWINGS OR DOCUMENTS DOES NOT CONSTITUTE PART PERFORMANCE OR ACCEPTANCE OF CONTRACT.

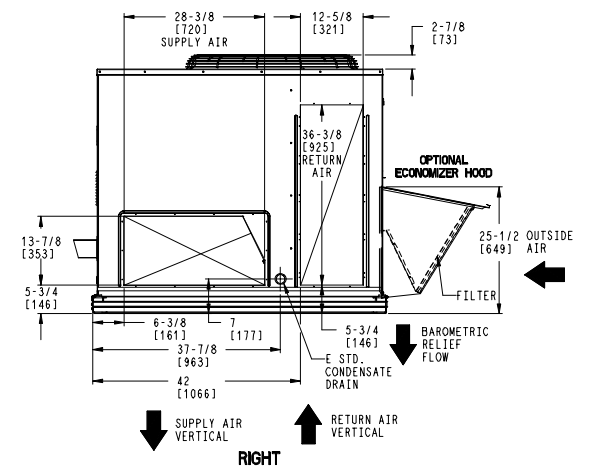
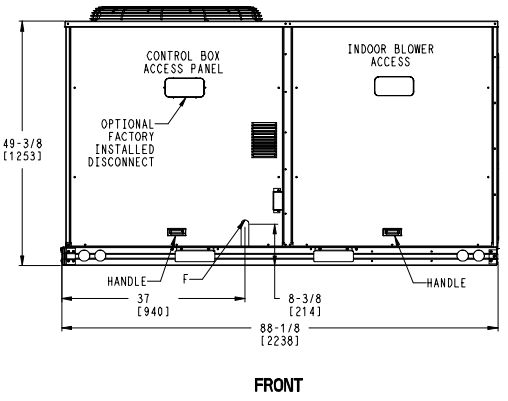
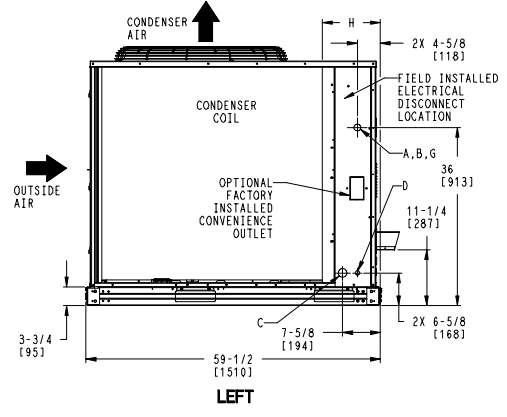
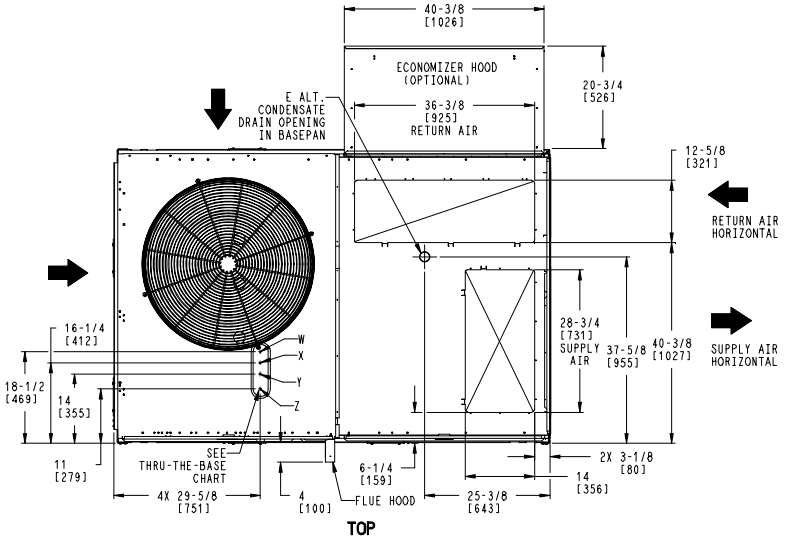
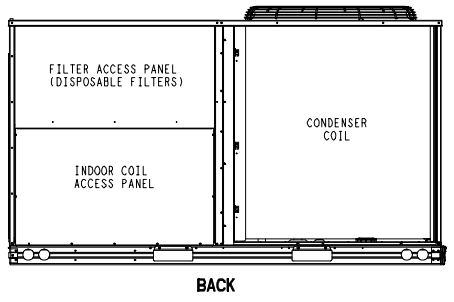
UNIT	OUTDOOR COIL TYPE	H
48FE-M14	RTPF	15 7/8 [403]
RTPF - ROUND TUBE, PLATE FIN (COPPER/ALUM)		

CONNECTION SIZES	
A	1 3/8" [35] DIA FIELD POWER SUPPLY HOLE
B	2 1/2" [64] DIA POWER SUPPLY KNOCKOUT
C	1 3/4" [51] DIA GAUGE ACCESS PLUG
D	7/8" [22] DIA FIELD CONTROL WIRING HOLE
E	3/4"-14 NPT CONDENSATE DRAIN
F	3/4"-14 NPT GAS CONNECTION
G	2" [51] DIA POWER SUPPLY KNOCK-OUT

THRU-THE-BASE CHART THESE HOLES REQUIRED FOR USE CRBTMPWR002A01,004A01			
	THREADED CONDUIT SIZE	WIRE USE	REQ'D HOLE SIZES (MAX.)
W	1/2"	ACC.	7/8" [22.2]
X	1/2"	24V	7/8" [22.2]
Y	1 1/4" (002, 004)	POWER	1 3/4" [44.4]
Z*	(004) 3/4" FPT	GAS	1 5/8" [41.3]

FOR "THRU-THE-BASEPAN" FACTORY OPTION, FITTINGS FOR ONLY X, Y, & Z ARE PROVIDED

* (002) PROVIDES 3/4" FPT THRU CURB FLANGE & FITTING.



ITC CLASSIFICATION	SHEET	DATE	SUPERCEDES	48FE-14 SINGLE ZONE ELECTRICAL COOLING WITH GAS HEAT	48TM009978	REV
U.S. ECCN:NSR	1 OF 3	08/02/24	-			-

Certified Drawing for RTU-1

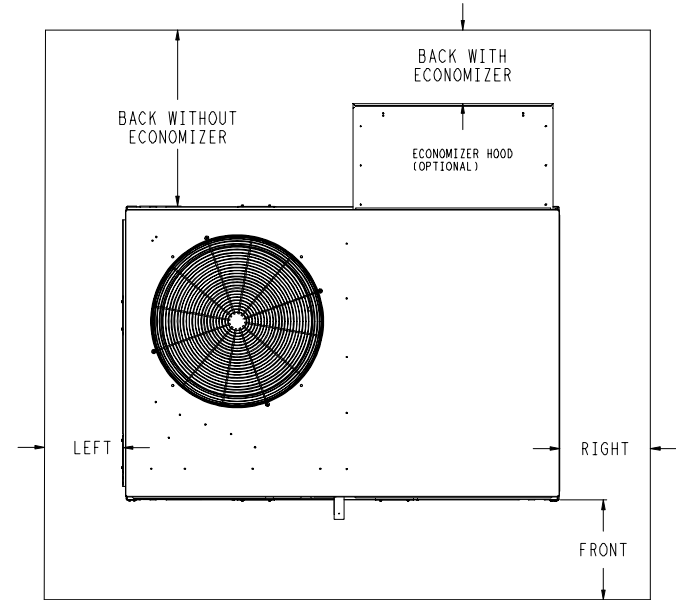
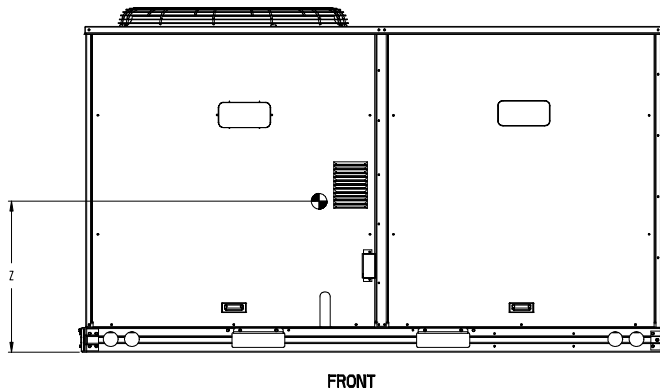
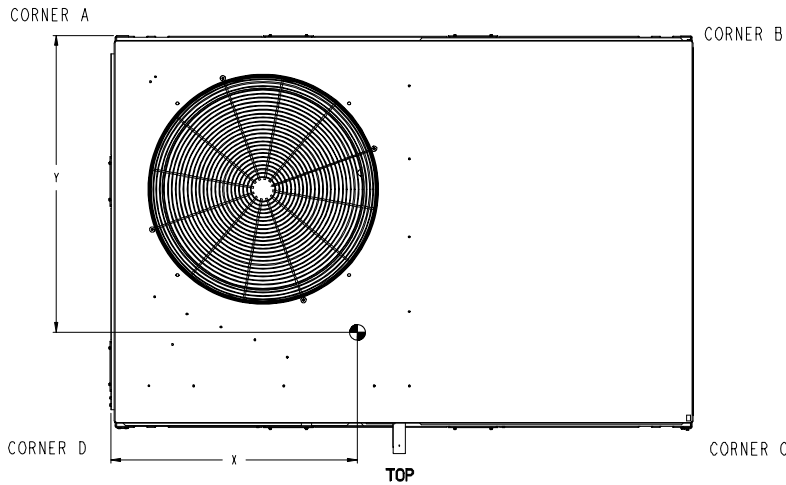
Project: Walgreens (PR) - #17240 Lexington, NC
 Prepared By:

07/21/2025
 11:19AM

UNIT	OUTDOOR COIL TYPE	STD. UNIT WEIGHT***		CORNER WEIGHT (A)		CORNER WEIGHT (B)		CORNER WEIGHT (C)		CORNER WEIGHT (D)		C.G.		
		LBS.	KG.	LBS.	KG.	LBS.	KG.	LBS.	KG.	LBS.	KG.	X	Y	Z
48FE-M14	RTPF	1041	472	243	110	195	88	269	122	335	152	39 1/4 [997]	34 1/2 [876]	21 7/8 [556]
RTPF - ROUND TUBE, PLATE FIN (COPPER/ALUM)														

*** STANDARD UNIT WEIGHT IS WITH LOW GAS HEAT AND WITHOUT PACKAGING.
 FOR OTHER OPTIONS AND ACCESSORIES, REFER TO THE PRODUCT DATA CATALOG.

Carrier THIS DOCUMENT IS THE PROPERTY OF CARRIER CORPORATION AND IS DELIVERED UPON THE EXPRESS CONDITION THAT THE CONTENTS WILL NOT BE DISCLOSED OR USED WITHOUT CARRIER CORPORATION'S WRITTEN CONSENT. SUBMISSION OF THESE DRAWINGS OR DOCUMENTS DOES NOT CONSTITUTE PART PERFORMANCE OR ACCEPTANCE OF CONTRACT.



NOTE:
 1. FOR ALL MINIMUM CLEARANCES LOCAL CODES OR JURISDICTIONS MAY PREVAIL.

SURFACE	CLEARANCE		
	SERVICE WITH CONDUCTIVE BARRIER	SERVICE WITH NONCONDUCTIVE BARRIER	OPERATING CLEARANCE
FRONT	48 [1219mm]	36 [914mm]	18 [457mm]
LEFT	48 [1219mm]	42 [1067mm]	18 [457mm]
BACK W/O ECON	48 [1219mm]	42 [1067mm]	18 [457mm]
BACK W/ECON	36 [914mm]	36 [914mm]	18 [457mm]
RIGHT	36 [914mm]	36 [914mm]	18 [457mm]
TOP	72 [1829mm]	72 [1829mm]	72 [1829mm]

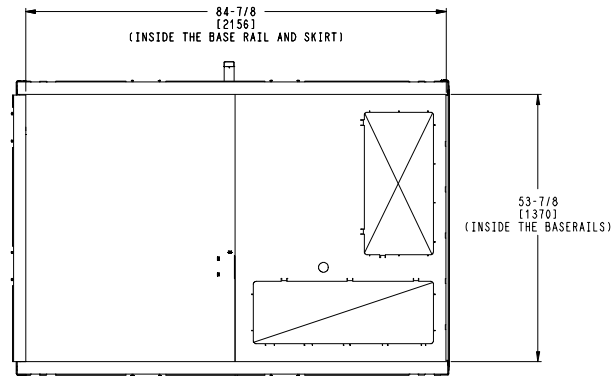
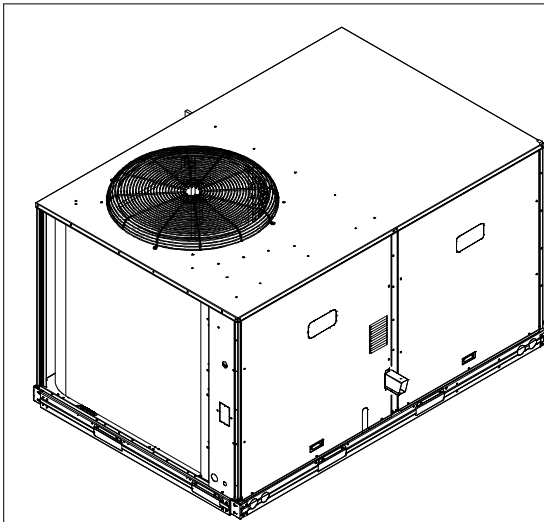
ITC CLASSIFICATION	SHEET	DATE	SUPERCEDES	48FE-14 SINGLE ZONE ELECTRICAL COOLING WITH GAS HEAT	48TM009978	REV
U.S. ECCN:NSR	2 OF 3	08/02/24	-			-

Certified Drawing for RTU-1

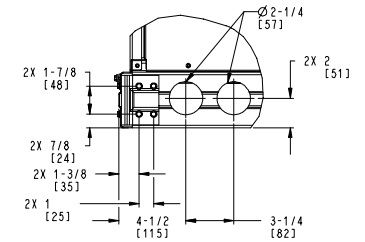
Project: Walgreens (PR) - #17240 Lexington, NC
 Prepared By:

07/21/2025
 11:19AM

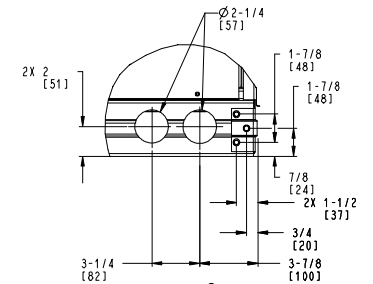
Carrier THIS DOCUMENT IS THE PROPERTY OF CARRIER CORPORATION AND IS DELIVERED UPON THE EXPRESS CONDITION THAT THE CONTENTS WILL NOT BE DISCLOSED OR USED WITHOUT CARRIER CORPORATION'S WRITTEN CONSENT. SUBMISSION OF THESE DRAWINGS OR DOCUMENTS DOES NOT CONSTITUTE PART PERFORMANCE OR ACCEPTANCE OF CONTRACT.



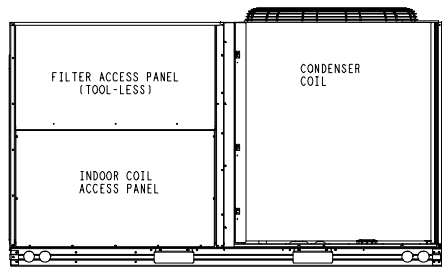
INSIDE BASERAIL DIMENSIONS
BOTTOM



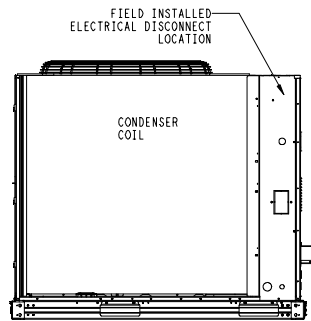
DETAIL B
 AT 2 PLCS



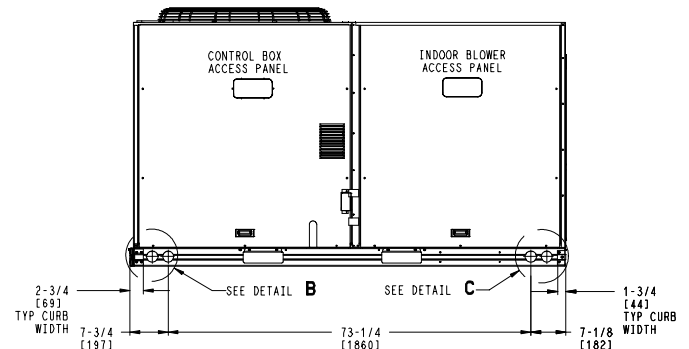
DETAIL C
 AT 2 PLCS



BACK



LEFT



FRONT

ITC CLASSIFICATION	SHEET	DATE	SUPERCEDES	48FE-14 SINGLE ZONE ELECTRICAL COOLING WITH GAS HEAT	48TM009978	REV
U.S. ECCN:NSR	3 OF 3	08/02/24	-			-

Performance Summary For RTU-1

Project: Walgreens (PR) - #17240 Lexington, NC
Prepared By:

07/21/2025
11:19AM

Part Number:48FEEN14B3A5-3W4Q0

Refrigerant:..... **R-454B**
ARI EER:..... **10.80**
IEER (Max Cooling at Normal Cooling Design Mode):..... **15.0**

Base Unit Dimensions

Unit Length:..... **88.1** in
Unit Width:..... **59.5** in
Unit Height:..... **49.4** in

Operating Weight

Base Unit Weight:..... **978** lb
Medium Gas Heat:..... **18** lb
RA Smoke Detector:..... **7** lb
High Static - EcoBlue Vane Axial Fan:..... **30** lb
SystemVu Controller:..... **2** lb
Hinged Panels and Unpowered Convenience Outlet:..... **9** lb
Phase Monitor/Protection & Non-Fused Disconnect:..... **15** lb

Total Operating Weight:..... **1059** lb

Unit

Unit Voltage-Phase-Hertz:..... **208-3-60**
Air Discharge:..... **Vertical**
Fan Drive Type:..... **Vane Axial**
Actual Airflow:..... **4000** CFM
Site Altitude:..... **768** ft

Cooling Performance

Condenser Entering Air DB:..... **94.0** F
Evaporator Entering Air DB:..... **75.0** F
Evaporator Entering Air WB:..... **63.0** F
Evaporator Entering Air Enthalpy:..... **28.82** BTU/lb
Evaporator Leaving Air DB:..... **53.8** F
Evaporator Leaving Air WB:..... **51.6** F
Evaporator Leaving Air Enthalpy:..... **21.41** BTU/lb
Gross Cooling Capacity:..... **129.74** MBH
Gross Sensible Capacity:..... **89.11** MBH
Compressor Power Input:..... **10.95** kW
Coil Bypass Factor:..... **0.104**

Mixed Air

Outdoor Air Airflow:..... **550** CFM
Outdoor Air DB:..... **94.0** F
Outdoor Air WB:..... **74.0** F
Outdoor Air Htg. Temp.:..... **18.0** F
Return Air DB:..... **72.0** F
Return Air WB:..... **61.0** F
Return Air Htg. Temp.:..... **70.0** F

Heating Performance

Heating Airflow:..... **4000** CFM
Entering Air Temp:..... **62.9** F
Leaving Air Temp:..... **105.9** F
Gas Heating Input Capacity:..... **180.0 / 224.0** MBH
Gas Heating Output Capacity:..... **146.0 / 181.0** MBH
Temperature Rise:..... **43.1** F
Thermal Efficiency (%):..... **81.0**

Supply Fan

Performance Summary For RTU-1

Project: Walgreens (PR) - #17240 Lexington, NC
 Prepared By:

07/21/2025
 11:19AM

External Static Pressure:.....	1.00	in wg
Options / Accessories Static Pressure		
Humidi-MiZer Dehumidification System:.....	0.20	in wg
Economizer:.....	0.20	in wg
Application External Static (ESP + Unit Opts/Acc.):.....	1.40	in wg
Fan RPM:.....	1855	
Fan Power:.....	3.26	BHP
NOTE:.....	Selected IFM RPM Range: 1308 - 2200	

Selection includes construction throwaway filter into the base fan curve. This filter is not MERV Rated.

Electrical Data

Voltage Range:	187 - 253
Compressor #1 RLA:.....	22.3
Compressor #1 LRA:.....	166
Compressor #2 RLA:.....	21.1
Compressor #2 LRA:.....	157
Indoor Fan Motor Type:.....	HIGH
Indoor Fan Motor FLA (Total):.....	12.6
Combustion Fan Motor FLA (ea):.....	0.48
Power Supply MCA:.....	69
Power Supply MOCP (Fuse or HACR):.....	80
Disconnect Size FLA:.....	73
Disconnect Size LRA:	348
Electrical Convenience Outlet:	None
Outdoor Fan [Qty / FLA (ea)]:	1 / 7.4

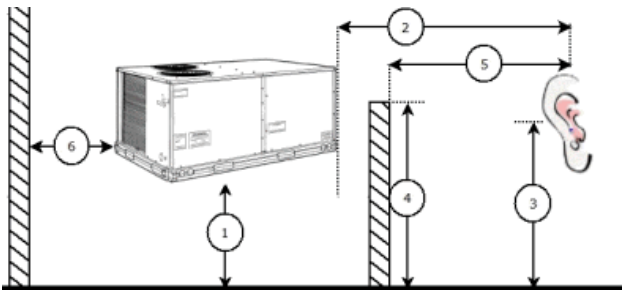
Control Panel SCCR: 5kA RMS at Rated Symmetrical Voltage

Acoustics

Sound Power Levels, db re 10E-12 Watts

	Discharge	Inlet	Outdoor
63 Hz	95.4	87.4	85.6
125 Hz	89.4	84.3	84.7
250 Hz	84.2	76.5	80.5
500 Hz	81.9	74.0	76.0
1000 Hz	83.0	72.7	72.4
2000 Hz	80.1	68.4	68.0
4000 Hz	74.8	58.6	62.8
8000 Hz	66.8	50.6	59.3
A-Weighted	87.1	77.4	79.0

Advanced Acoustics



Advanced Acoustics Parameters

Performance Summary For RTU-1

Project: Walgreens (PR) - #17240 Lexington, NC
 Prepared By:

07/21/2025
 11:19AM

1. Unit height above ground:**30.0** ft
2. Horizontal distance from unit to receiver:**50.0** ft
3. Receiver height above ground:**5.7** ft
4. Height of obstruction:**0.0** ft
5. Horizontal distance from obstruction to receiver: **.0.0** ft
6. Horizontal distance from unit to obstruction:**0.0** ft

Detailed Acoustics Information

Octave Band Center Freq. Hz	63	125	250	500	1k	2k	4k	8k	Overall
A	85.6	84.7	80.5	76.0	72.4	68.0	62.8	59.3	89.2 Lw
B	59.4	68.6	71.9	72.8	72.4	69.2	63.8	58.2	78.5 LwA
C	53.2	52.3	48.1	43.6	40.0	35.6	30.4	26.9	56.8 Lp
D	27.0	36.2	39.5	40.4	40.0	36.8	31.4	25.8	46.1 LpA

Legend

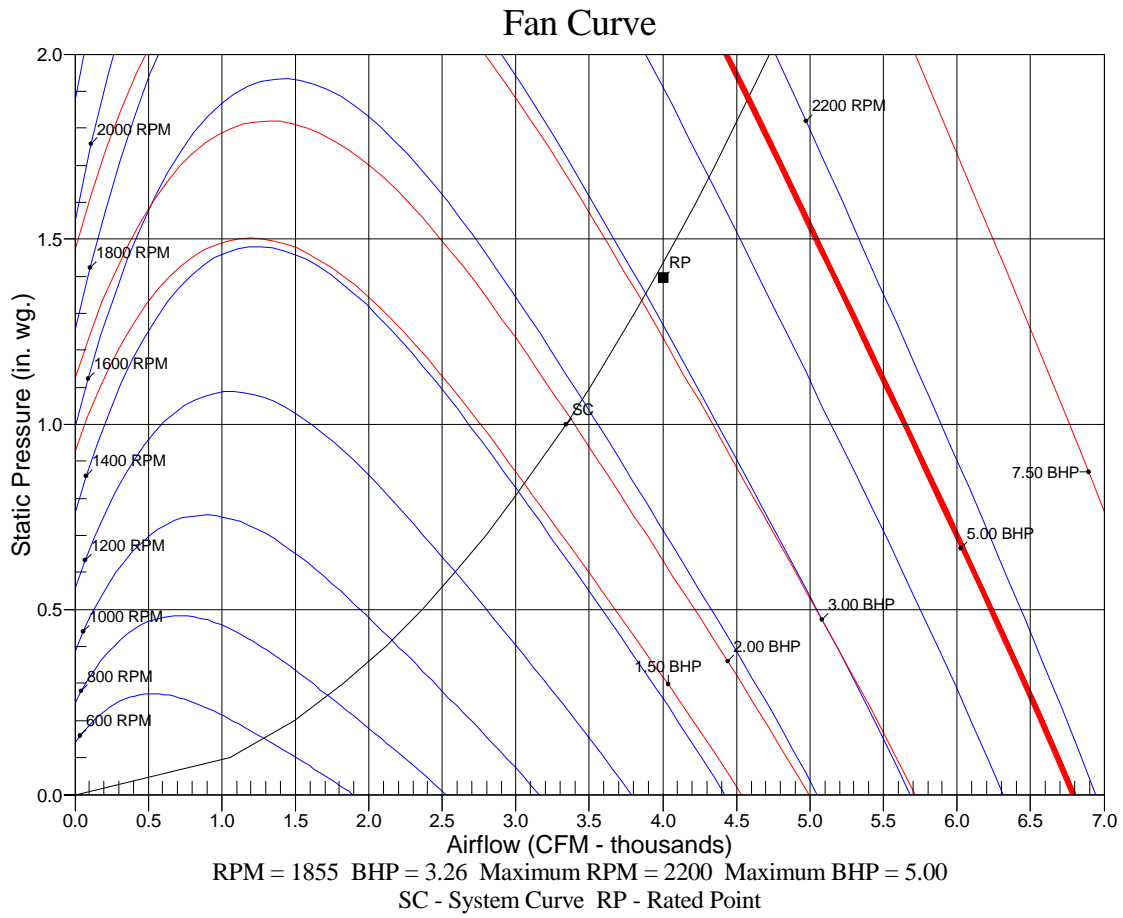
- A Sound Power Levels at Unit's Acoustic Center, Lw
- B A-Weighted Sound Power Levels at Unit's Acoustic Center, LwA
- C Sound Pressure Levels at Specific Distance from Unit, Lp
- D A-Weighted Sound Pressure Levels at Specific Distance from Unit, LpA

Calculation methods used in this program are patterned after the ASHRAE Guide; other ASHRAE Publications and the AHRI Acoustical Standards. While a very significant effort has been made to insure the technical accuracy of this program, it is assumed that the user is knowledgeable in the art of system sound estimation and is aware of the tolerances involved in real world acoustical estimation. This program makes certain assumptions as to the dominant sound sources and sound paths which may not always be appropriate to the real system being estimated. Because of this, no assurances can be offered that this software will always generate an accurate sound prediction from user supplied input data. If in doubt about the estimation of expected sound levels in a space, an Acoustical Engineer or a person with sound prediction expertise should be consulted.

Performance Summary For RTU-1

Project: Walgreens (PR) - #17240 Lexington, NC
Prepared By:

07/21/2025
11:19AM



RTU-2

**Tag Cover Sheet
Unit Report
Certified Drawing
Performance Report**

Unit Report For RTU-2

Project: Walgreens (PR) - #17240 Lexington, NC
 Prepared By:

07/21/2025
 11:19AM

Unit Parameters

Unit Model:.....**48GEEM12B3A5-3W4P0**
 Unit Size:.....**12 (10.0 Tons)**
 Volts-Phase-Hertz:.....**208-3-60**
 Heating Type:.....**Gas**
 Refrigerant:.....**R-454B**
 Heat Control:.....**Medium Gas Heat**
 Duct Cfg:.....**Vertical Supply / Vertical Return**
 DX Options:.....**Two Stage Cooling, Single Circuit**

Dimensions (ft. in.) & Weight (lb.) ***

Unit Length:.....**7' 4.125"**
 Unit Width:.....**4' 11.5"**
 Unit Height:.....**4' 1.375"**
Total Operating Weight:..... 1140 lb

*** Weights and Dimensions are approximate. Weight does not include unit packaging. Approximate dimensions are provided primarily for shipping purposes. For exact dimensions and weights, refer to appropriate product data catalog.

Lines and Filters

Gas Line Size: **3/4**
 Condensate Drain Line Size: **3/4**
 Return Air Filter Type: **Throwaway**
 Return Air Filter Quantity: **4**
 Return Air Filter Size: **20 x 20 x 2**

Selection includes construction throwaway filter into the base fan curve.

Unit Configuration

Medium Gas Heat
 RA Smoke Detector
 High Static - EcoBlue Vane Axial
 Al/Cu - Al/Cu
 SystemVu Controls
 ULL Enthalpy Economizer with Barometric Relief
 Hinged Panels + NPCO
 PMR + HACR
 Standard Packaging
 UL60335-2-40 approved R-454B Dissipation board and leak sensor included as standard

Warranty Information

1-Year parts(std.)
 5-Year compressor parts(std.)
 10-Year heat exchanger - Aluminized(std.)
 3-Year SystemVu Controller
COMPLETE UNIT YEAR 2-5 PARTS ONLY

Ordering Information

Part Number	Description	Quantity
48GEEM12B3A5-3W4P0	Rooftop Unit	1

Certified Drawing for RTU-2

Project: Walgreens (PR) - #17240 Lexington, NC
 Prepared By:

07/21/2025
 11:19AM

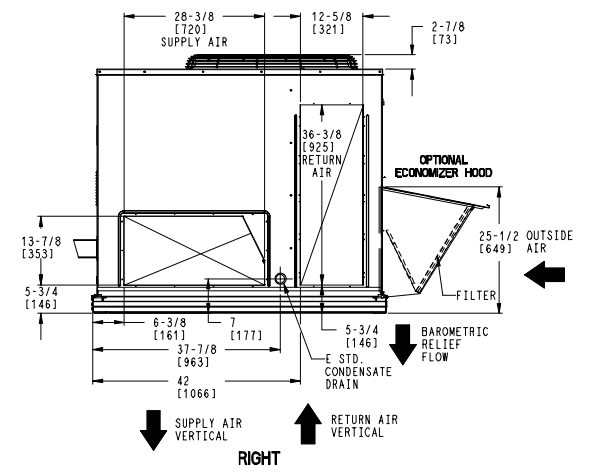
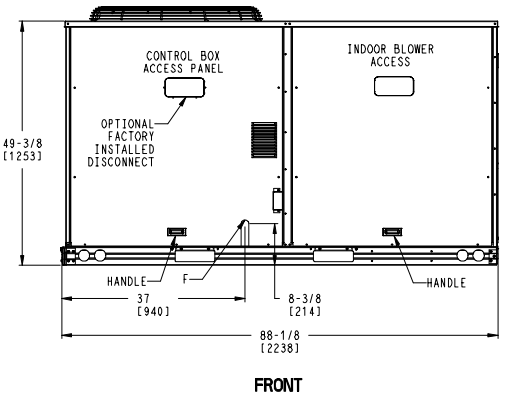
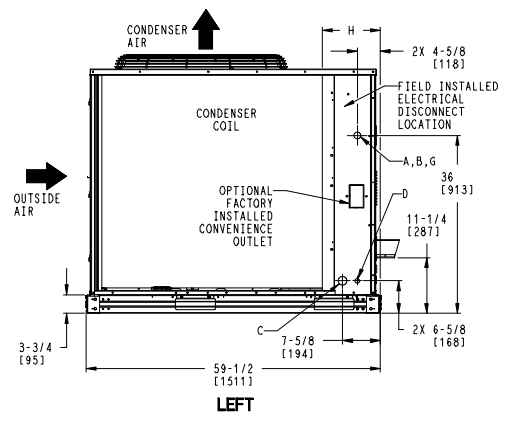
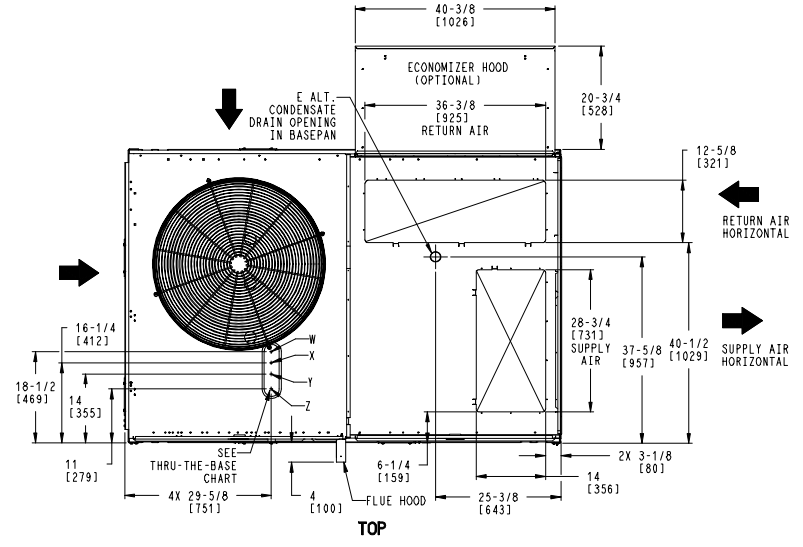
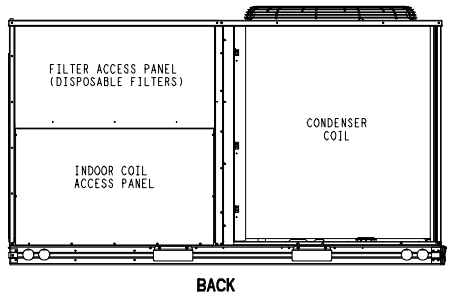
- NOTES:
1. DIMENSIONS ARE IN INCHES. DIMENSIONS IN [] ARE IN MILLIMETERS.
 2. CENTER OF GRAVITY
 3. DIRECTION OF AIR FLOW
 4. ALL VIEW DRAWN USING 3RD ANGLE

UNIT	OUTDOOR COIL TYPE	H
48GE-M12	RTPF	15 7/8 [403]
RTPF - ROUND TUBE, PLATE FIN (COPPER/ALUM)		

THIS DOCUMENT IS THE PROPERTY OF CARRIER CORPORATION AND IS DELIVERED UPON THE EXPRESS CONDITION THAT THE CONTENTS WILL NOT BE DISCLOSED OR USED WITHOUT CARRIER CORPORATION'S WRITTEN CONSENT. SUBMISSION OF THESE DRAWINGS OR DOCUMENTS DOES NOT CONSTITUTE PART PERFORMANCE OR ACCEPTANCE OF CONTRACT.

CONNECTION SIZES	
A	1 3/8" [35] DIA FIELD POWER SUPPLY HOLE
B	2 1/2" [64] DIA POWER SUPPLY KNOCKOUT
C	1 3/4" [51] DIA GAUGE ACCESS PLUG
D	7/8" [22] DIA FIELD CONTROL WIRING HOLE
E	3/4"-14 NPT CONDENSATE DRAIN
F	3/4"-14 NPT GAS CONNECTION
G	2" [51] DIA POWER SUPPLY KNOCK-OUT

THRU-THE-BASE CHART THESE HOLES REQUIRED FOR USE CRBTMPWR002A01,004A01			
	THREADED CONDUIT SIZE	WIRE USE	REQ'D HOLE SIZES (MAX.)
W	1/2"	ACC.	7/8" [22.2]
X	1/2"	24V	7/8" [22.2]
Y	1 1/4" (002,004)	POWER	1 3/4" [44.4]
Z*	(004) 3/4" FPT	GAS	1 5/8" [41.3]
FOR "THRU-THE-BASEPAN" FACTORY OPTION, FITTINGS FOR ONLY X, Y, & Z ARE PROVIDED			
* (002) PROVIDES 3/4" FPT THRU CURB FLANGE & FITTING.			



ITC CLASSIFICATION	SHEET	DATE	SUPERCEDES	48GE-12 SINGLE ZONE ELECTRICAL COOLING WITH GAS HEAT	48TM009900	REV
U.S. ECCN:NSR	1 OF 3	5/21/24	-			-

Certified Drawing for RTU-2

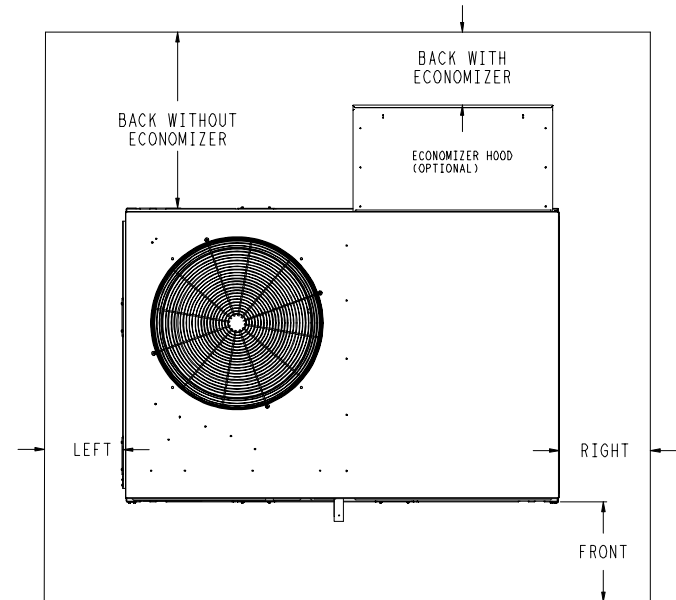
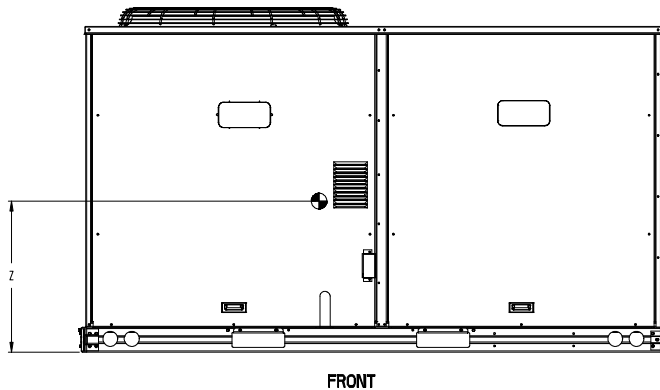
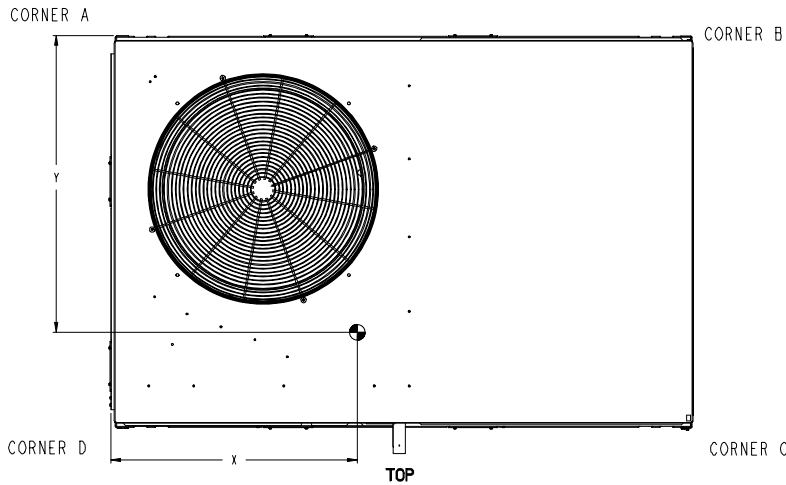
Project: Walgreens (PR) - #17240 Lexington, NC
 Prepared By:

07/21/2025
 11:19AM

UNIT	OUTDOOR COIL TYPE	STD. UNIT WEIGHT***		CORNER WEIGHT (A)		CORNER WEIGHT (B)		CORNER WEIGHT (C)		CORNER WEIGHT (D)		C.G.					
		LBS.	KG.	LBS.	KG.	LBS.	KG.	LBS.	KG.	LBS.	KG.	X	Y	Z			
48GE-M12	RTPF	1037	470	240	109	204	93	272	124	320	145	40 1/2	[1029]	34	[864]	20 1/2	[521]
RTPF - ROUND TUBE, PLATE FIN (COPPER/ALUM)																	

*** STANDARD UNIT WEIGHT IS WITH LOW GAS HEAT AND WITHOUT PACKAGING.
 FOR OTHER OPTIONS AND ACCESSORIES, REFER TO THE PRODUCT DATA CATALOG.

Carrier THIS DOCUMENT IS THE PROPERTY OF CARRIER CORPORATION AND IS DELIVERED UPON THE EXPRESS CONDITION THAT THE CONTENTS WILL NOT BE DISCLOSED OR USED WITHOUT CARRIER CORPORATION'S WRITTEN CONSENT. SUBMISSION OF THESE DRAWINGS OR DOCUMENTS DOES NOT CONSTITUTE PART PERFORMANCE OR ACCEPTANCE OF CONTRACT.



NOTE:
 1. FOR ALL MINIMUM CLEARANCES LOCAL CODES OR JURISDICTIONS MAY PREVAIL.

SURFACE	CLEARANCE		
	SERVICE WITH: CONDUCTIVE BARRIER	SERVICE WITH: NONCONDUCTIVE BARRIER	OPERATING CLEARANCE
FRONT	48 [1219mm]	36 [914mm]	18 [457mm]
LEFT	48 [1219mm]	42 [1067mm]	18 [457mm]
BACK W/O ECON	48 [1219mm]	42 [1067mm]	18 [457mm]
BACK W/ECON	36 [914mm]	36 [914mm]	18 [457mm]
RIGHT	36 [914mm]	36 [914mm]	18 [457mm]
TOP	72 [1829mm]	72 [1829mm]	72 [1829mm]

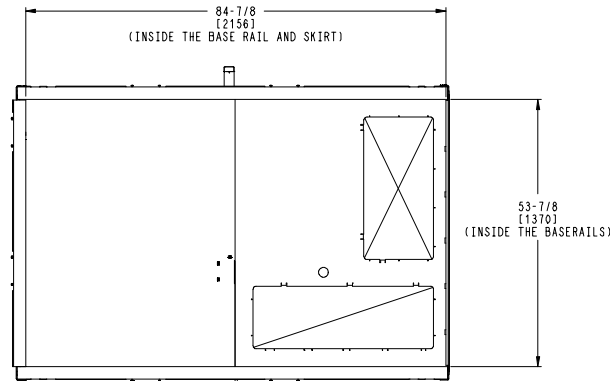
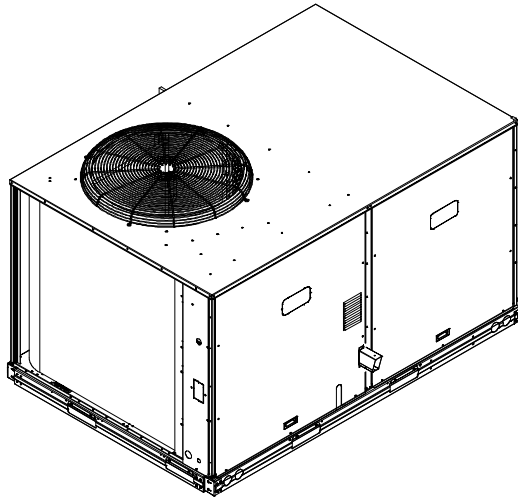
ITC CLASSIFICATION U.S. ECCN:NSR	SHEET 2 OF 3	DATE 5/21/24	SUPERCEDES -	48GE-12 SINGLE ZONE ELECTRICAL COOLING WITH GAS HEAT	48TM009900	REV -
-------------------------------------	-----------------	-----------------	-----------------	--	------------	----------

Certified Drawing for RTU-2

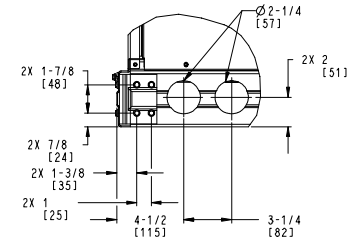
Project: Walgreens (PR) - #17240 Lexington, NC
 Prepared By:

07/21/2025
 11:19AM

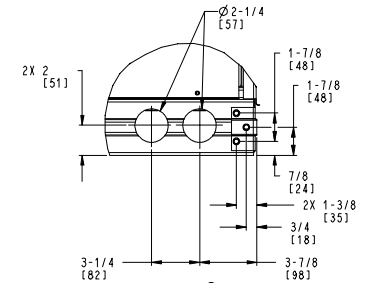
Carrier THIS DOCUMENT IS THE PROPERTY OF CARRIER CORPORATION AND IS DELIVERED UPON THE EXPRESS CONDITION THAT THE CONTENTS WILL NOT BE DISCLOSED OR USED WITHOUT CARRIER CORPORATION'S WRITTEN CONSENT. SUBMISSION OF THESE DRAWINGS OR DOCUMENTS DOES NOT CONSTITUTE PART PERFORMANCE OR ACCEPTANCE OF CONTRACT.



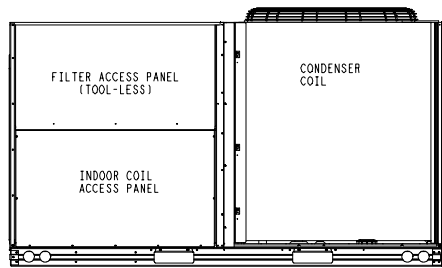
INSIDE BASERAIL DIMENSIONS
BOTTOM



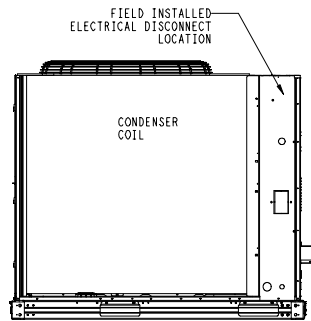
DETAIL B
 AT 2 PLCS



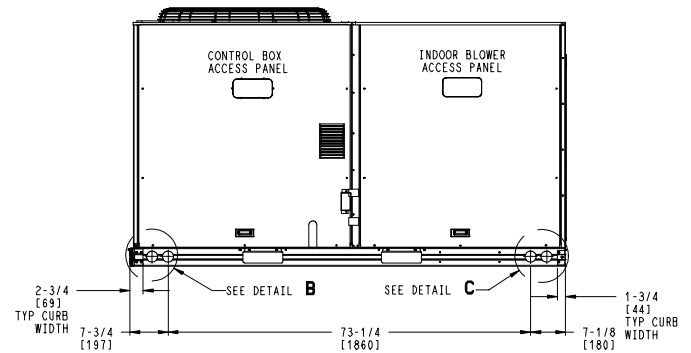
DETAIL C
 AT 2 PLCS



BACK



LEFT



FRONT

ITC CLASSIFICATION	SHEET	DATE	SUPERCEDES	48GE-12 SINGLE ZONE ELECTRICAL COOLING WITH GAS HEAT	48TM009900	REV
U.S. ECCN: NSR	3 OF 3	5/21/24	-			-

Performance Summary For RTU-2

Project: Walgreens (PR) - #17240 Lexington, NC
Prepared By:

07/21/2025
11:19AM

Part Number:48GEEM12B3A5-3W4P0

Refrigerant:.....**R-454B**
ARI EER:.....**12.10**
IEER:.....**17.5**

Base Unit Dimensions

Unit Length:.....**88.1** in
Unit Width:.....**59.5** in
Unit Height:.....**49.4** in

Operating Weight

Base Unit Weight:.....**1037** lb
RA Smoke Detector:.....**7** lb
High Static - EcoBlue Vane Axial:.....**30** lb
SystemVu Controls:.....**2** lb
ULL Enthalpy Economizer with Barometric Relief:.....**55** lb
Hinged Panels + NPCO:.....**9** lb

Total Operating Weight:.....**1140** lb

Unit

Unit Voltage-Phase-Hertz:.....**208-3-60**
Air Discharge:.....**Vertical**
Fan Drive Type:.....**Vane Axial**
Actual Airflow:.....**3250** CFM
Site Altitude:.....**768** ft

Cooling Performance

Condenser Entering Air DB:.....**94.0** F
Evaporator Entering Air DB:.....**76.4** F
Evaporator Entering Air WB:.....**64.7** F
Entering Air Enthalpy:.....**30.06** BTU/lb
Evaporator Leaving Air DB:.....**52.6** F
Evaporator Leaving Air WB:.....**52.1** F
Evaporator Leaving Air Enthalpy:.....**21.73** BTU/lb
Gross Cooling Capacity:.....**118.52** MBH
Gross Sensible Capacity:.....**81.13** MBH
Compressor Power Input:.....**8.00** kW
Coil Bypass Factor:.....**0.040**

Mixed Air

Outdoor Air Airflow:.....**650** CFM
Outdoor Air DB:.....**94.0** F
Outdoor Air WB:.....**74.0** F
Outdoor Air Htg. Temp.:.....**18.0** F
Return Air DB:.....**72.0** F
Return Air WB:.....**62.0** F
Return Air Htg. Temp.:.....**70.0** F

Heating Performance

Heating Airflow:.....**3250** CFM
Entering Air Temp:.....**59.6** F
Leaving Air Temp:.....**112.6** F
Gas Heating Input Capacity:.....**180.0 / 224.0** MBH
Gas Heating Output Capacity:.....**146.0 / 181.0** MBH
Temperature Rise:.....**53.0** F
Thermal Efficiency (%):.....**81.0**

Supply Fan

External Static Pressure:.....**1.00** in wg

Performance Summary For RTU-2

Project: Walgreens (PR) - #17240 Lexington, NC
 Prepared By:

07/21/2025
 11:19AM

Options / Accessories Static Pressure

Economizer:.....	0.13	in wg
Application External Static (ESP + Unit Opts/Acc.):.....	1.13	in wg
Fan RPM:.....	1588	
Fan Power:.....	2.05	BHP
NOTE:.....	Selected IFM RPM Range: 1264 - 2200	

Selection includes construction throwaway filter into the base fan curve. This filter is not MERV Rated.

Electrical Data

Voltage Range:	187 - 253	
Compressor #1 RLA:.....	21.1	
Compressor #1 LRA:.....	157	
Compressor #2 RLA:.....	12.8	
Compressor #2 LRA:.....	120	
Indoor Fan Motor Type:.....	HIGH	
Indoor Fan Motor FLA (Total):.....	12.6	
Combustion Fan Motor FLA (ea):.....	0.48	
Power Supply MCA:	60	
Disconnect Size FLA:.....	62	
Disconnect Size LRA:	302	
Electrical Convenience Outlet:.....	None	
Outdoor Fan [Qty / FLA (ea)]:	1 / 7.4	
Power Supply HACR:.....	80	

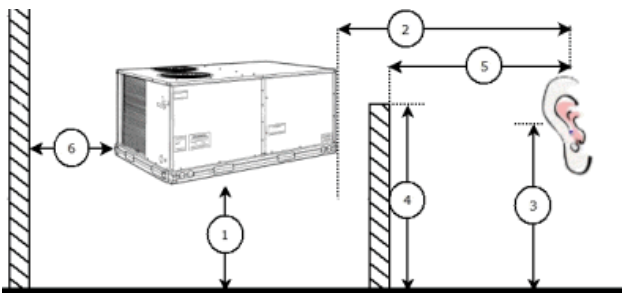
Control Panel SCCR: 5kA RMS at Rated Symmetrical Voltage

Acoustics

Sound Power Levels, db re 10E-12 Watts

	Discharge	Inlet	Outdoor
63 Hz	93.3	84.9	85.9
125 Hz	86.5	82.4	87.9
250 Hz	80.8	75.3	85.6
500 Hz	77.9	70.8	84.4
1000 Hz	78.9	69.4	82.8
2000 Hz	75.5	64.1	78.5
4000 Hz	69.9	54.9	74.9
8000 Hz	61.9	48.4	72.5
A-Weighted	83.0	74.5	87.0

Advanced Acoustics



Advanced Acoustics Parameters

1. Unit height above ground:.....**30.0** ft
 2. Horizontal distance from unit to receiver:.....**50.0** ft

Performance Summary For RTU-2

Project: Walgreens (PR) - #17240 Lexington, NC
 Prepared By:

07/21/2025
 11:19AM

- 3. Receiver height above ground:**5.7** ft
- 4. Height of obstruction:**0.0** ft
- 5. Horizontal distance from obstruction to receiver: **0.0** ft
- 6. Horizontal distance from unit to obstruction:**0.0** ft

Detailed Acoustics Information

Octave Band Center Freq. Hz	63	125	250	500	1k	2k	4k	8k	Overall
A	85.9	87.9	85.6	84.4	82.8	78.5	74.9	72.5	92.9 Lw
B	59.7	71.8	77.0	81.2	82.8	79.7	75.9	71.4	87.3 LwA
C	53.5	55.5	53.2	52.0	50.4	46.1	42.5	40.1	60.5 Lp
D	27.3	39.4	44.6	48.8	50.4	47.3	43.5	39.0	54.9 LpA

Legend

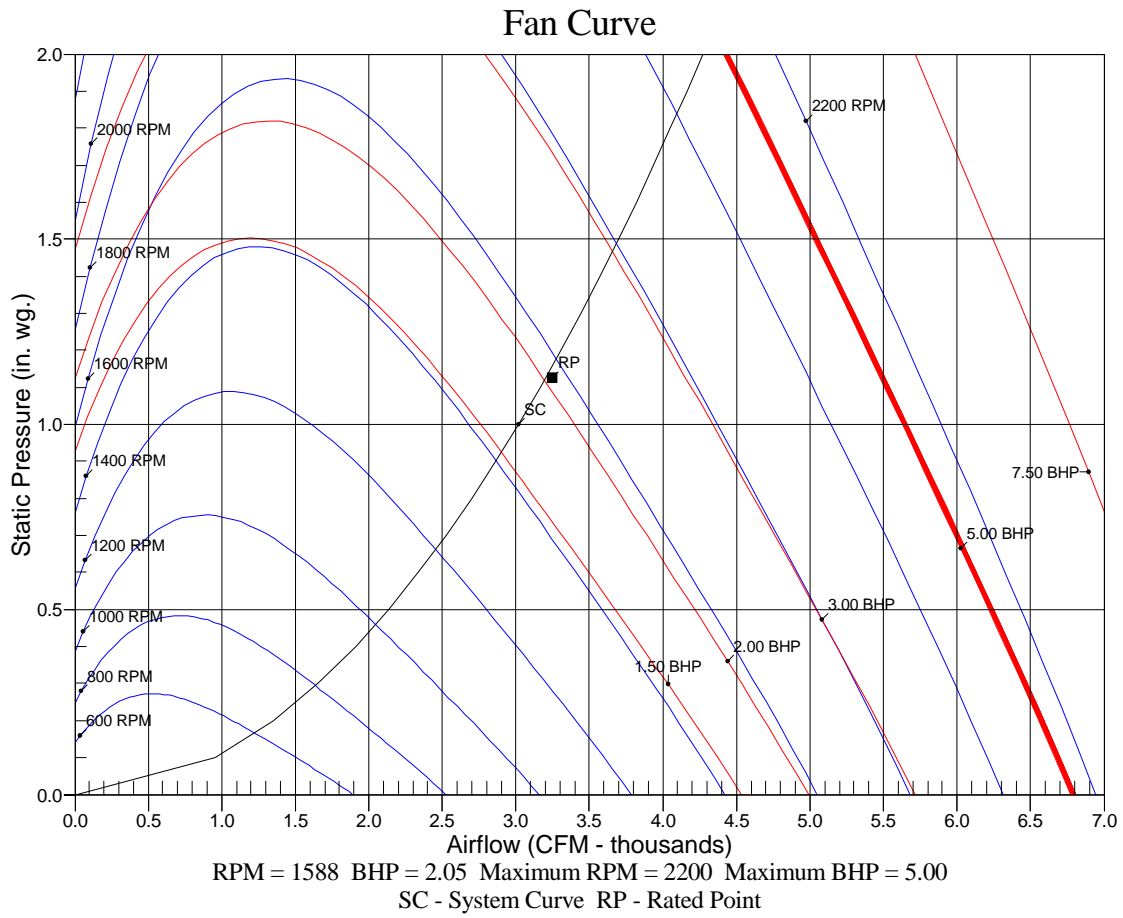
- A Sound Power Levels at Unit's Acoustic Center, Lw
- B A-Weighted Sound Power Levels at Unit's Acoustic Center, LwA
- C Sound Pressure Levels at Specific Distance from Unit, Lp
- D A-Weighted Sound Pressure Levels at Specific Distance from Unit, LpA

Calculation methods used in this program are patterned after the ASHRAE Guide; other ASHRAE Publications and the AHRI Acoustical Standards. While a very significant effort has been made to insure the technical accuracy of this program, it is assumed that the user is knowledgeable in the art of system sound estimation and is aware of the tolerances involved in real world acoustical estimation. This program makes certain assumptions as to the dominant sound sources and sound paths which may not always be appropriate to the real system being estimated. Because of this, no assurances can be offered that this software will always generate an accurate sound prediction from user supplied input data. If in doubt about the estimation of expected sound levels in a space, an Acoustical Engineer or a person with sound prediction expertise should be consulted.

Performance Summary For RTU-2

Project: Walgreens (PR) - #17240 Lexington, NC
Prepared By:

07/21/2025
11:19AM



RTU-3

**Tag Cover Sheet
Unit Report
Certified Drawing
Performance Report**

Unit Report For RTU-3

Project: Walgreens (PR) - #17240 Lexington, NC
 Prepared By:

07/21/2025
 11:19AM

Unit Parameters

Unit Model:.....**48GEDM12B3A5-3W4P0**
 Unit Size:.....**12 (10.0 Tons)**
 Volts-Phase-Hertz:.....**208-3-60**
 Heating Type:.....**Gas**
 Refrigerant:.....**R-454B**
 Heat Control:.....**Low Gas Heat**
 Duct Cfg:.....**Vertical Supply / Vertical Return**
 DX Options:.....**Two Stage Cooling, Single Circuit**

Dimensions (ft. in.) & Weight (lb.) ***

Unit Length:.....**7' 4.125"**
 Unit Width:.....**4' 11.5"**
 Unit Height:.....**4' 1.375"**
Total Operating Weight:..... 1140 lb

*** Weights and Dimensions are approximate. Weight does not include unit packaging. Approximate dimensions are provided primarily for shipping purposes. For exact dimensions and weights, refer to appropriate product data catalog.

Lines and Filters

Gas Line Size: **3/4**
 Condensate Drain Line Size: **3/4**
 Return Air Filter Type: **Throwaway**
 Return Air Filter Quantity: **4**
 Return Air Filter Size: **20 x 20 x 2**

Selection includes construction throwaway filter into the base fan curve.

Unit Configuration

RA Smoke Detector
 High Static - EcoBlue Vane Axial
 Al/Cu - Al/Cu
 SystemVu Controls
 ULL Enthalpy Economizer with Barometric Relief
 Hinged Panels + NPCO
 PMR + HACR
 Standard Packaging
 UL60335-2-40 approved R-454B Dissipation board and leak sensor included as standard

Warranty Information

1-Year parts(std.)
 5-Year compressor parts(std.)
 10-Year heat exchanger - Aluminized(std.)
 3-Year SystemVu Controller
COMPLETE UNIT YEAR 2-5 PARTS ONLY

Ordering Information

Part Number	Description	Quantity
48GEDM12B3A5-3W4P0	Rooftop Unit	1

Certified Drawing for RTU-3

Project: Walgreens (PR) - #17240 Lexington, NC
 Prepared By:

07/21/2025
 11:19AM

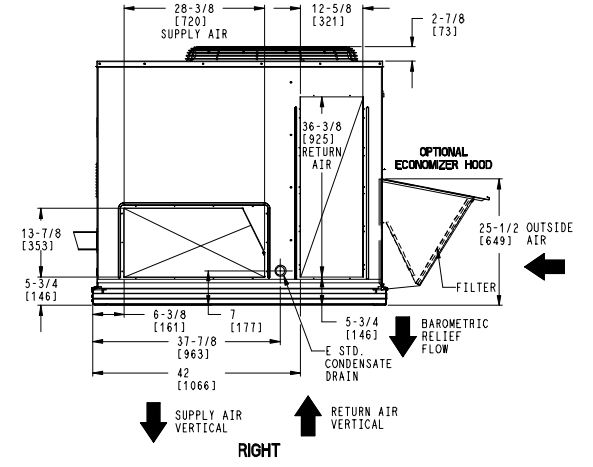
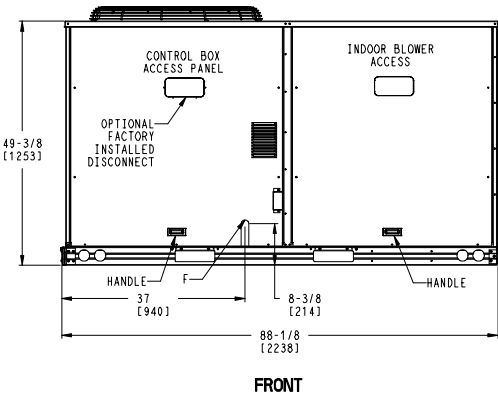
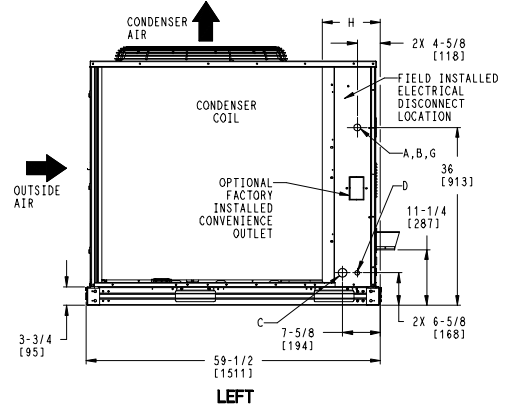
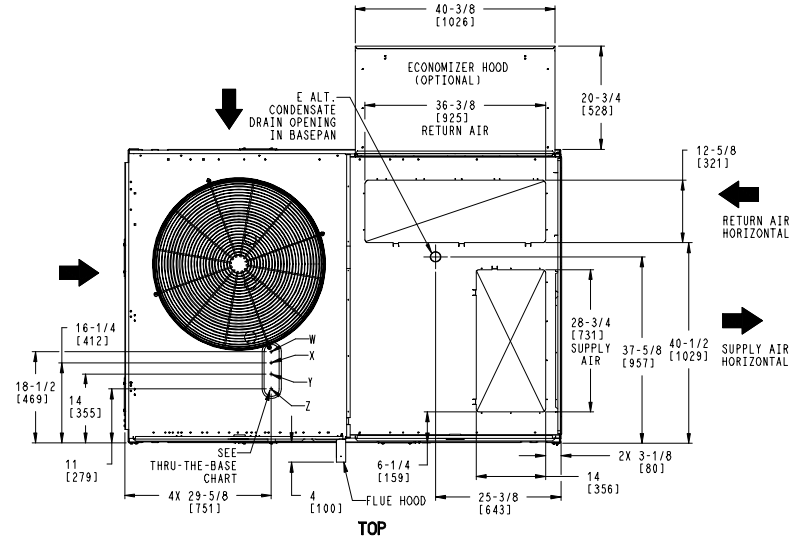
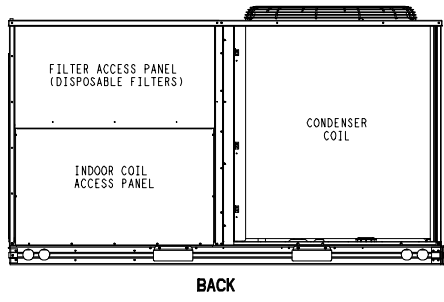
- NOTES:
1. DIMENSIONS ARE IN INCHES. DIMENSIONS IN [] ARE IN MILLIMETERS.
 2. CENTER OF GRAVITY
 3. DIRECTION OF AIR FLOW
 4. ALL VIEW DRAWN USING 3RD ANGLE

UNIT	OUTDOOR COIL TYPE	H
48GE-M12	RTPF	15 7/8 [403]
RTPF - ROUND TUBE, PLATE FIN (COPPER/ALUM)		

THIS DOCUMENT IS THE PROPERTY OF CARRIER CORPORATION AND IS DELIVERED UPON THE EXPRESS CONDITION THAT THE CONTENTS WILL NOT BE DISCLOSED OR USED WITHOUT CARRIER CORPORATION'S WRITTEN CONSENT. SUBMISSION OF THESE DRAWINGS OR DOCUMENTS DOES NOT CONSTITUTE PART PERFORMANCE OR ACCEPTANCE OF CONTRACT.

CONNECTION SIZES	
A	1 3/8" [35] DIA FIELD POWER SUPPLY HOLE
B	2 1/2" [64] DIA POWER SUPPLY KNOCKOUT
C	1 3/4" [51] DIA GAUGE ACCESS PLUG
D	7/8" [22] DIA FIELD CONTROL WIRING HOLE
E	3/4"-14 NPT CONDENSATE DRAIN
F	3/4"-14 NPT GAS CONNECTION
G	2" [51] DIA POWER SUPPLY KNOCK-OUT

THRU-THE-BASE CHART THESE HOLES REQUIRED FOR USE CRBTMPWR002A01,004A01			
	THREADED CONDUIT SIZE	WIRE USE	REQ'D HOLE SIZES (MAX.)
W	1/2"	ACC.	7/8" [22.2]
X	1/2"	24V	7/8" [22.2]
Y	1 1/4" (002,004)	POWER	1 3/4" [44.4]
Z*	(004) 3/4" FPT	GAS	1 5/8" [41.3]
FOR "THRU-THE-BASEPAN" FACTORY OPTION, FITTINGS FOR ONLY X, Y, & Z ARE PROVIDED			
* (002) PROVIDES 3/4" FPT THRU CURB FLANGE & FITTING.			



ITC CLASSIFICATION	SHEET	DATE	SUPERCEDES	48GE-12 SINGLE ZONE ELECTRICAL COOLING WITH GAS HEAT	48TM009900	REV
U.S. ECCN:NSR	1 OF 3	5/21/24	-			-

Certified Drawing for RTU-3

Project: Walgreens (PR) - #17240 Lexington, NC
 Prepared By:

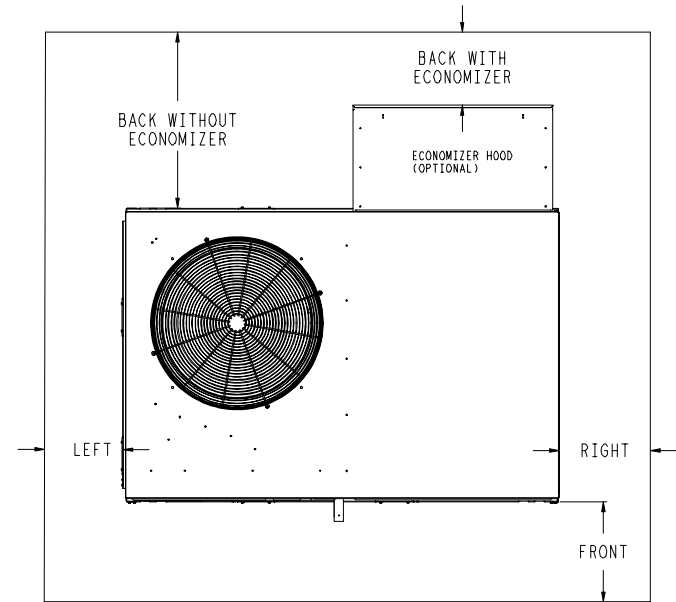
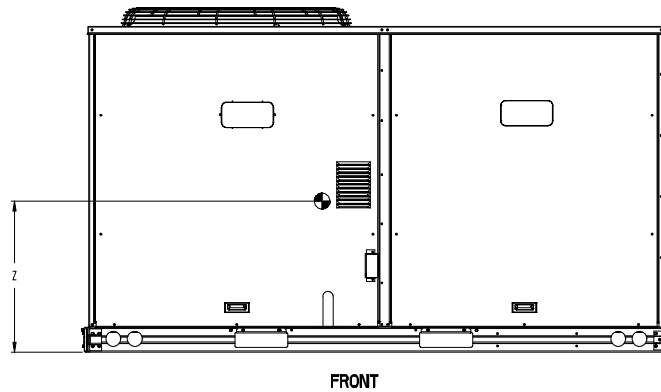
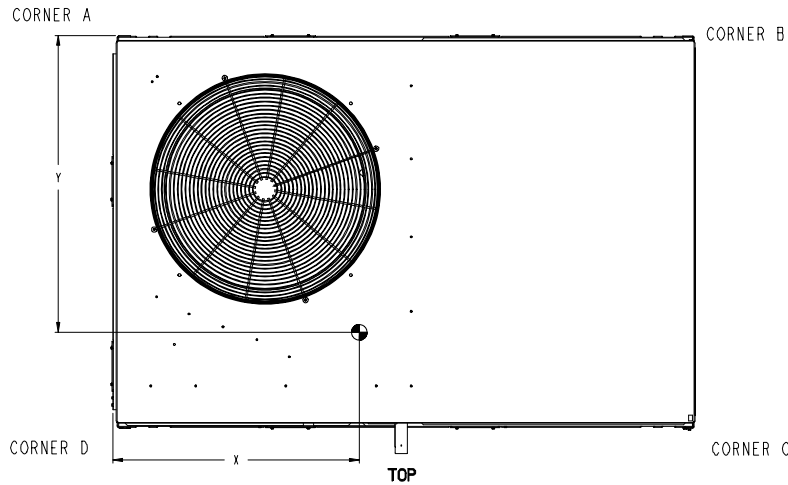
07/21/2025
 11:19AM

Carrier THIS DOCUMENT IS THE PROPERTY OF CARRIER CORPORATION AND IS DELIVERED UPON THE EXPRESS CONDITION THAT THE CONTENTS WILL NOT BE DISCLOSED OR USED WITHOUT CARRIER CORPORATION'S WRITTEN CONSENT. SUBMISSION OF THESE DRAWINGS OR DOCUMENTS DOES NOT CONSTITUTE PART PERFORMANCE OR ACCEPTANCE OF CONTRACT.

UNIT	OUTDOOR COIL TYPE	STD. UNIT WEIGHT***		CORNER WEIGHT (A)		CORNER WEIGHT (B)		CORNER WEIGHT (C)		CORNER WEIGHT (D)		C.G.					
		LBS.	KG.	LBS.	KG.	LBS.	KG.	LBS.	KG.	LBS.	KG.	X	Y	Z			
48GE-M12	RTPF	1037	470	240	109	204	93	272	124	320	145	40 1/2	[1029]	34	[864]	20 1/2	[521]

RTPF - ROUND TUBE, PLATE FIN (COPPER/ALUM)

*** STANDARD UNIT WEIGHT IS WITH LOW GAS HEAT AND WITHOUT PACKAGING. FOR OTHER OPTIONS AND ACCESSORIES, REFER TO THE PRODUCT DATA CATALOG.



NOTE:
 1. FOR ALL MINIMUM CLEARANCES LOCAL CODES OR JURISDICTIONS MAY PREVAIL.

SURFACE	CLEARANCE		
	SERVICE WITH: CONDUCTIVE BARRIER	SERVICE WITH: NONCONDUCTIVE BARRIER	OPERATING CLEARANCE
FRONT	48 [1219mm]	36 [914mm]	18 [457mm]
LEFT	48 [1219mm]	42 [1067mm]	18 [457mm]
BACK W/O ECON	48 [1219mm]	42 [1067mm]	18 [457mm]
BACK W/ECON	36 [914mm]	36 [914mm]	18 [457mm]
RIGHT	36 [914mm]	36 [914mm]	18 [457mm]
TOP	72 [1829mm]	72 [1829mm]	72 [1829mm]

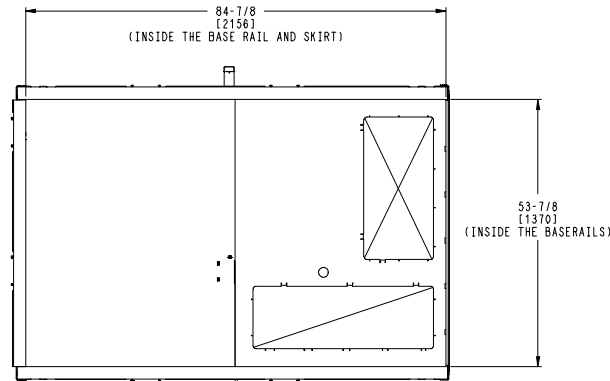
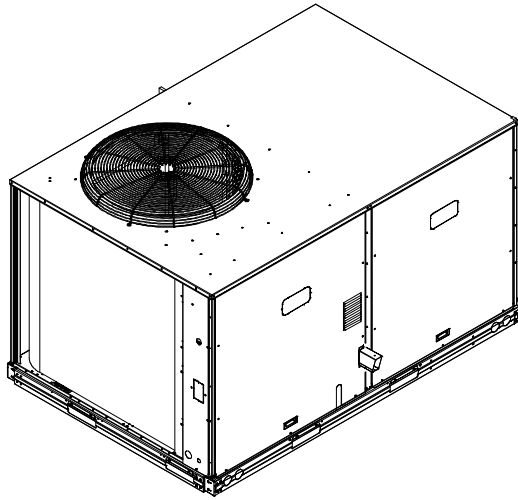
ITC CLASSIFICATION U.S. ECCN:NSR	SHEET 2 OF 3	DATE 5/21/24	SUPERCEDES -	48GE-12 SINGLE ZONE ELECTRICAL COOLING WITH GAS HEAT	48TM009900	REV -
-------------------------------------	-----------------	-----------------	-----------------	--	------------	----------

Certified Drawing for RTU-3

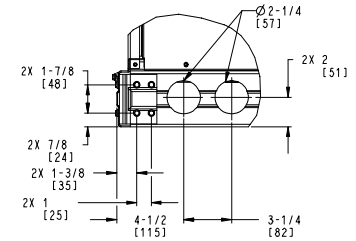
Project: Walgreens (PR) - #17240 Lexington, NC
 Prepared By:

07/21/2025
 11:19AM

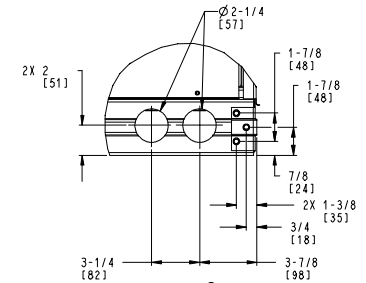
Carrier THIS DOCUMENT IS THE PROPERTY OF CARRIER CORPORATION AND IS DELIVERED UPON THE EXPRESS CONDITION THAT THE CONTENTS WILL NOT BE DISCLOSED OR USED WITHOUT CARRIER CORPORATION'S WRITTEN CONSENT. SUBMISSION OF THESE DRAWINGS OR DOCUMENTS DOES NOT CONSTITUTE PART PERFORMANCE OR ACCEPTANCE OF CONTRACT.



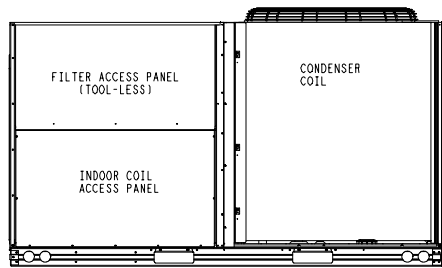
INSIDE BASERAIL DIMENSIONS
BOTTOM



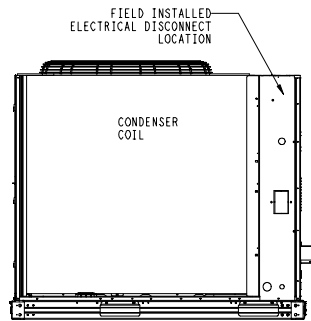
DETAIL B
 AT 2 PLCS



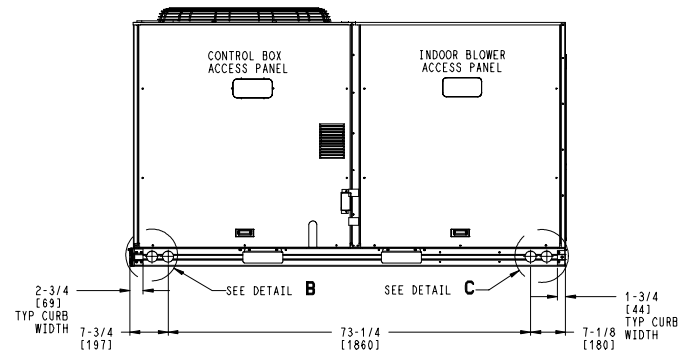
DETAIL C
 AT 2 PLCS



BACK



LEFT



FRONT

ITC CLASSIFICATION	SHEET	DATE	SUPERCEDES	48GE-12 SINGLE ZONE ELECTRICAL COOLING WITH GAS HEAT	48TM009900	REV
U.S. ECCN:NSR	3 OF 3	5/21/24	-			-

Performance Summary For RTU-3

Project: Walgreens (PR) - #17240 Lexington, NC
Prepared By:

07/21/2025
11:19AM

Part Number:48GEDM12B3A5-3W4P0

Refrigerant:.....R-454B
ARI EER:.....12.10
IEER:.....17.5

Base Unit Dimensions

Unit Length:.....88.1 in
Unit Width:.....59.5 in
Unit Height:.....49.4 in

Operating Weight

Base Unit Weight:.....1037 lb
RA Smoke Detector:.....7 lb
High Static - EcoBlue Vane Axial:.....30 lb
SystemVu Controls:.....2 lb
ULL Enthalpy Economizer with Barometric Relief:.....55 lb
Hinged Panels + NPCO:.....9 lb

Total Operating Weight:.....1140 lb

Unit

Unit Voltage-Phase-Hertz:.....208-3-60
Air Discharge:.....Vertical
Fan Drive Type:.....Vane Axial
Actual Airflow:.....3250 CFM
Site Altitude:.....768 ft

Cooling Performance

Condenser Entering Air DB:.....94.0 F
Evaporator Entering Air DB:.....76.4 F
Evaporator Entering Air WB:.....64.7 F
Entering Air Enthalpy:.....30.06 BTU/lb
Evaporator Leaving Air DB:.....52.6 F
Evaporator Leaving Air WB:.....52.1 F
Evaporator Leaving Air Enthalpy:.....21.73 BTU/lb
Gross Cooling Capacity:.....118.52 MBH
Gross Sensible Capacity:.....81.13 MBH
Compressor Power Input:.....8.00 kW
Coil Bypass Factor:.....0.040

Mixed Air

Outdoor Air Airflow:.....650 CFM
Outdoor Air DB:.....94.0 F
Outdoor Air WB:.....74.0 F
Outdoor Air Htg. Temp.:.....18.0 F
Return Air DB:.....72.0 F
Return Air WB:.....62.0 F
Return Air Htg. Temp.:.....70.0 F

Heating Performance

Heating Airflow:.....3250 CFM
Entering Air Temp:.....59.6 F
Leaving Air Temp:.....103.0 F
Gas Heating Input Capacity:.....120.0 / 180.0 MBH
Gas Heating Output Capacity:.....98.0 / 148.0 MBH
Temperature Rise:.....43.4 F
Thermal Efficiency (%):.....82.0

Supply Fan

External Static Pressure:.....1.00 in wg

Performance Summary For RTU-3

Project: Walgreens (PR) - #17240 Lexington, NC
 Prepared By:

07/21/2025
 11:19AM

Options / Accessories Static Pressure

Economizer:.....	0.13	in wg
Application External Static (ESP + Unit Opts/Acc.):.....	1.13	in wg
Fan RPM:.....	1592	
Fan Power:.....	2.06	BHP
NOTE:.....	Selected IFM RPM Range: 1279 - 2200	

Selection includes construction throwaway filter into the base fan curve. This filter is not MERV Rated.

Electrical Data

Voltage Range:	187 - 253
Compressor #1 RLA:.....	21.1
Compressor #1 LRA:.....	157
Compressor #2 RLA:.....	12.8
Compressor #2 LRA:.....	120
Indoor Fan Motor Type:.....	HIGH
Indoor Fan Motor FLA (Total):.....	12.6
Combustion Fan Motor FLA (ea):.....	0.48
Power Supply MCA:.....	60
Disconnect Size FLA:.....	62
Disconnect Size LRA:	302
Electrical Convenience Outlet:.....	None
Outdoor Fan [Qty / FLA (ea)]:	1 / 7.4
Power Supply HACR:.....	80

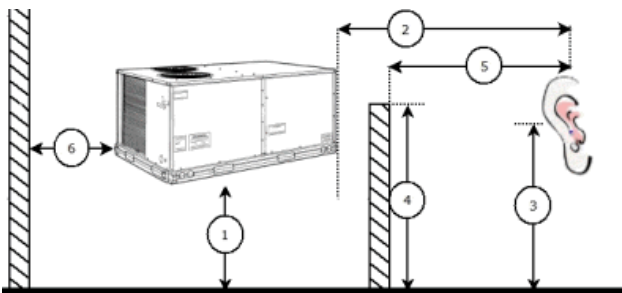
Control Panel SCCR: 5kA RMS at Rated Symmetrical Voltage

Acoustics

Sound Power Levels, db re 10E-12 Watts

	Discharge	Inlet	Outdoor
63 Hz	93.3	85.0	85.9
125 Hz	86.5	82.4	87.9
250 Hz	80.8	75.4	85.6
500 Hz	78.0	70.8	84.4
1000 Hz	78.9	69.5	82.8
2000 Hz	75.6	64.2	78.5
4000 Hz	70.0	55.0	74.9
8000 Hz	62.0	48.5	72.5
A-Weighted	83.1	74.5	87.0

Advanced Acoustics



Advanced Acoustics Parameters

- 1. Unit height above ground:.....**30.0** ft
- 2. Horizontal distance from unit to receiver:.....**50.0** ft

Performance Summary For RTU-3

Project: Walgreens (PR) - #17240 Lexington, NC
 Prepared By:

07/21/2025
 11:19AM

- 3. Receiver height above ground:5.7 ft
- 4. Height of obstruction:0.0 ft
- 5. Horizontal distance from obstruction to receiver: .0.0 ft
- 6. Horizontal distance from unit to obstruction:0.0 ft

Detailed Acoustics Information

Octave Band Center Freq. Hz	63	125	250	500	1k	2k	4k	8k	Overall
A	85.9	87.9	85.6	84.4	82.8	78.5	74.9	72.5	92.9 Lw
B	59.7	71.8	77.0	81.2	82.8	79.7	75.9	71.4	87.3 LwA
C	53.5	55.5	53.2	52.0	50.4	46.1	42.5	40.1	60.5 Lp
D	27.3	39.4	44.6	48.8	50.4	47.3	43.5	39.0	54.9 LpA

Legend

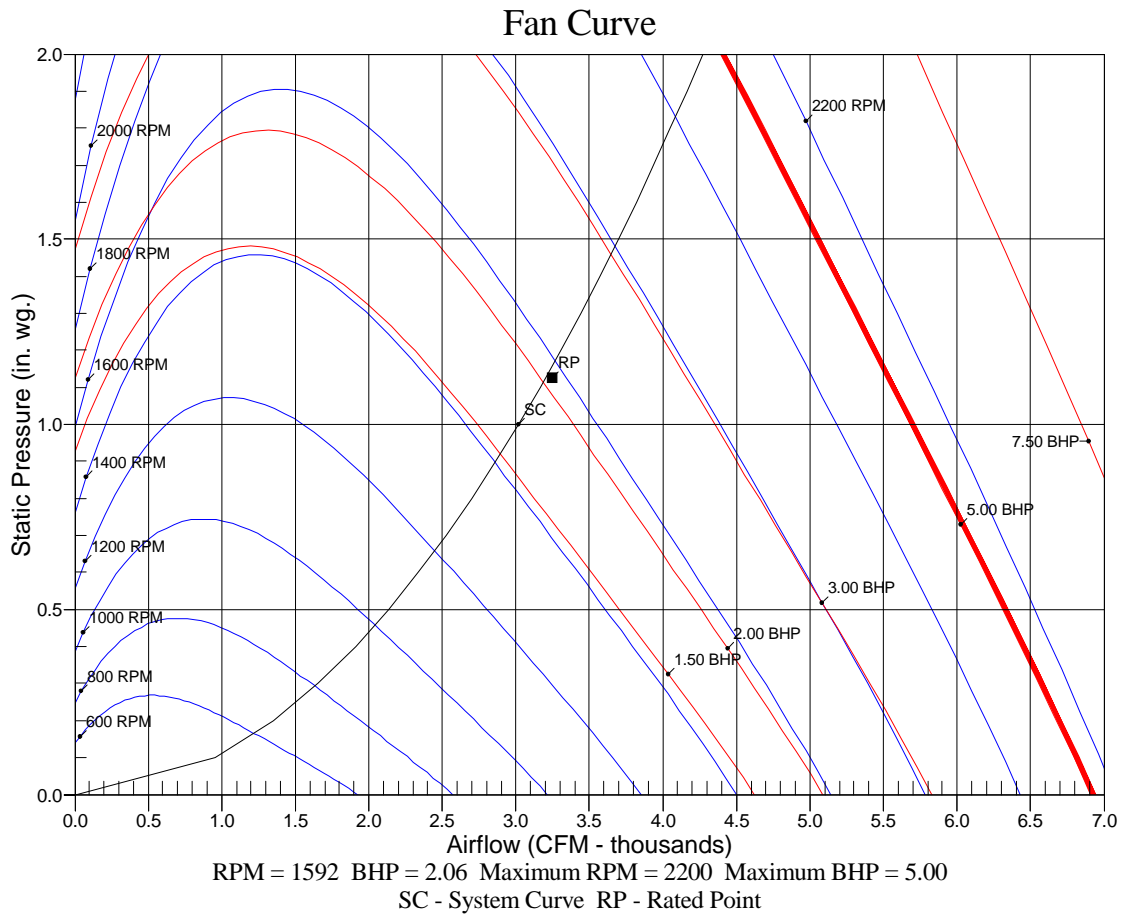
- A Sound Power Levels at Unit's Acoustic Center, Lw
- B A-Weighted Sound Power Levels at Unit's Acoustic Center, LwA
- C Sound Pressure Levels at Specific Distance from Unit, Lp
- D A-Weighted Sound Pressure Levels at Specific Distance from Unit, LpA

Calculation methods used in this program are patterned after the ASHRAE Guide; other ASHRAE Publications and the AHRI Acoustical Standards. While a very significant effort has been made to insure the technical accuracy of this program, it is assumed that the user is knowledgeable in the art of system sound estimation and is aware of the tolerances involved in real world acoustical estimation. This program makes certain assumptions as to the dominant sound sources and sound paths which may not always be appropriate to the real system being estimated. Because of this, no assurances can be offered that this software will always generate an accurate sound prediction from user supplied input data. If in doubt about the estimation of expected sound levels in a space, an Acoustical Engineer or a person with sound prediction expertise should be consulted.

Performance Summary For RTU-3

Project: Walgreens (PR) - #17240 Lexington, NC
Prepared By:

07/21/2025
11:19AM



RTU-4

**Tag Cover Sheet
Unit Report
Certified Drawing
Performance Report**

Unit Report For RTU-4

Project: Walgreens (PR) - #17240 Lexington, NC
 Prepared By:

07/21/2025
 11:19AM

Unit Parameters

Unit Model:..... **50GE-M05B3A5-3W4P0**
 Unit Size:.....**05 (4 Tons)**
 Volts-Phase-Hertz:..... **208-3-60**
 Heating Type:..... **Electric**
 Refrigerant:..... **R-454B**
 Heat Control:..... **No Heat**
 Duct Cfg:..... **Vertical Supply / Vertical Return**
 DX Options:..... **Two Stage Cooling, Single Circuit**

Dimensions (ft. in.) & Weight (lb.) ***

Unit Length:..... **6' 2.375"**
 Unit Width:..... **3' 10.625"**
 Unit Height:..... **2' 9.375"**
Total Operating Weight:..... 620 lb

*** Weights and Dimensions are approximate. Weight does not include unit packaging. Approximate dimensions are provided primarily for shipping purposes. For exact dimensions and weights, refer to appropriate product data catalog.

Lines and Filters

Condensate Drain Line Size: **3/4**
 Return Air Filter Type: **Throwaway**
 Return Air Filter Quantity: **2**
 Return Air Filter Size: **16 x 25 x 2**

Selection includes construction throwaway filter into the base fan curve.

Unit Configuration

RA Smoke Detector
 High Static - EcoBlue Vane Axial Fan
 Al/Cu - Al/Cu
 SystemVu Controller
 ULL Enthalpy Economizer with Barometric Relief
 Hinged Panels and Unpowered Convenience Outlet
 Phase Monitor/ Protection & HACR Breaker
 Standard
 UL60335-2-40 approved R-454B Dissipation board and leak sensor included as standard

Warranty Information

5-Year compressor parts (STD.)
 5-Year electric heater (STD.)
 1-Year parts (STD.)
COMPLETE UNIT YEAR 2-5 PARTS ONLY

Ordering Information

Part Number	Description	Quantity
50GE-M05B3A5-3W4P0	Rooftop Unit	1
Field Installed Accessories		
CRHEATER325A00	Electric Heater	1

Certified Drawing for RTU-4

Project: Walgreens (PR) - #17240 Lexington, NC
 Prepared By:

07/21/2025
 11:19AM

- NOTES:
1. DIMENSIONS ARE IN INCHES, DIMENSIONS IN [] ARE IN MILLIMETERS.
 2. CENTER OF GRAVITY
 3. DIRECTION OF AIR FLOW
 4. ALL VIEW DRAWN USING 3RD ANGLE

UNIT	J	K
50GE**04	33 3/8 [847]	14 7/8 [377]
50GE**05	33 3/8 [847]	14 7/8 [377]
50GE**06	41 3/8 [1051]	18 5/8 [472]

THIS DOCUMENT IS THE PROPERTY OF CARRIER CORPORATION AND IS DELIVERED UPON THE EXPRESS CONDITION THAT THE CONTENTS WILL NOT BE DISCLOSED OR USED WITHOUT CARRIER CORPORATION'S WRITTEN CONSENT. SUBMISSION OF THESE DRAWINGS OR DOCUMENTS DOES NOT CONSTITUTE PART PERFORMANCE OR ACCEPTANCE OF CONTRACT.

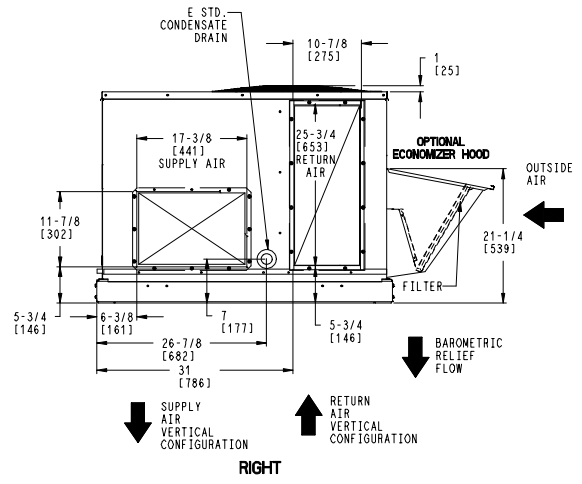
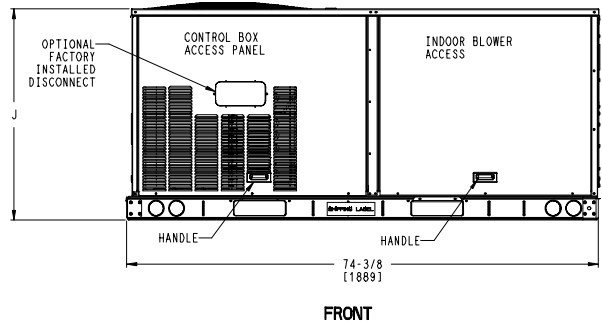
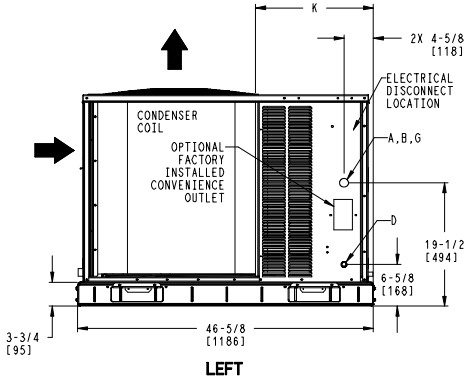
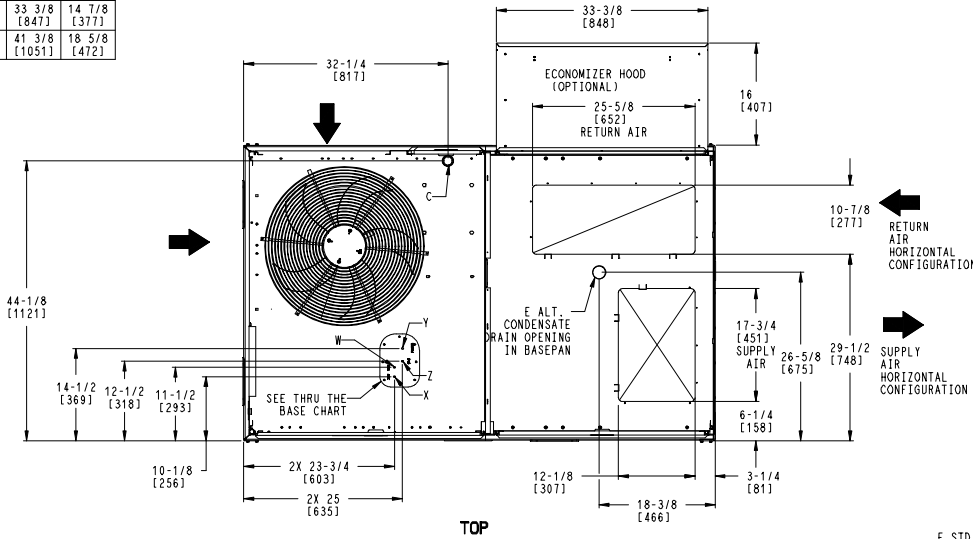
CONNECTION SIZES	
A	1 3/8" [35] DIA FIELD POWER SUPPLY HOLE
B	2" [51] DIA POWER SUPPLY KNOCKOUT
C	1 3/4" [44] DIA GAUGE ACCESS PLUG
D	7/8" [22] DIA FIELD CONTROL WIRING HOLE
E	3/4"-14 NPT CONDENSATE DRAIN
G	2 1/2" [64] DIA POWER SUPPLY KNOCK-OUT

THRU-THE-BASE CHART THESE HOLES REQUIRED FOR USE CRBTMPWRO08A00, 009A00			
	THREADED CONDUIT SIZE	WIRE USE	REQ'D HOLE SIZES (MAX.)
W	1/2"	115V	7/8" [22.2]
X	1/2"	24V	7/8" [22.2]
Y *	3/4"	POWER	1 1/8" [28.6]
Z **	(009A00) 1/2" FPT	GAS	1 1/8" [28.6]

FOR "THRU-THE-BASEPAN" FACTORY OPTION, FITTINGS FOR ONLY X, Y, & Z ARE PROVIDED

* SELECT EITHER 3/4" OR 1/2" FOR POWER, DEPENDING ON WIRE SIZE

** (008A00) PROVIDES 3/4" FPT THRU CURB FLANGE & FITTING.



ITC CLASSIFICATION	SHEET	DATE	SUPERCEDES	50GE 04-06 SINGLE PACKAGE ELECTRICAL COOLING WITH ELECTRIC HEAT	48TC006644	REV
U.S. ECCN:NSR	1 OF 3	5/16/24	9/15/23			A

Certified Drawing for RTU-4

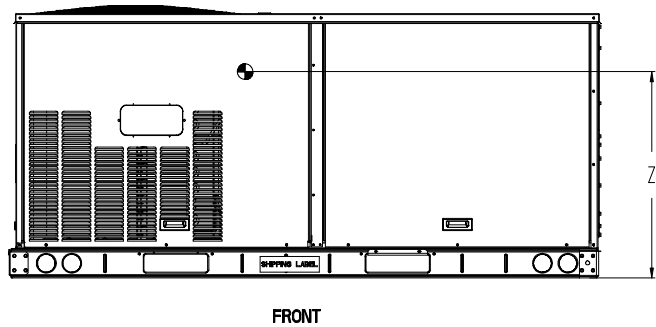
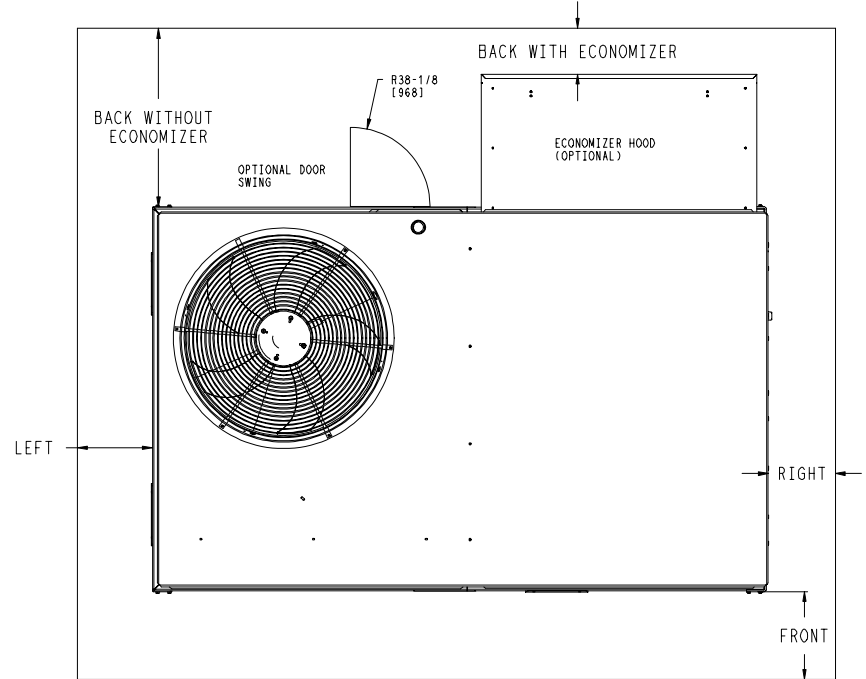
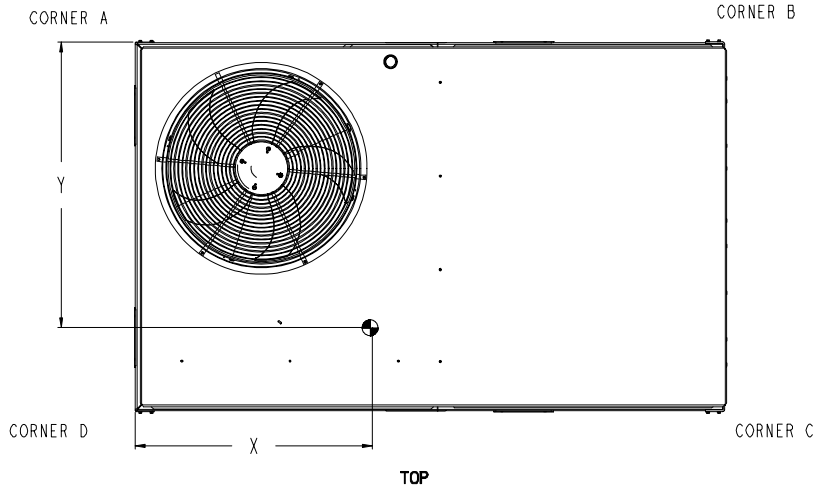
Project: Walgreens (PR) - #17240 Lexington, NC
 Prepared By:

07/21/2025
 11:19AM

UNIT	STD. UNIT WEIGHT *		CORNER WEIGHT (A)		CORNER WEIGHT (B)		CORNER WEIGHT (C)		CORNER WEIGHT (D)		C.G.			HEIGHT			
	LBS.	KG.	LBS.	KG.	LBS.	KG.	LBS.	KG.	LBS.	KG.	X	Y	Z				
50GE**04	490	222	127	58	119	54	118	54	126	57	36	[914]	23 1/4	[591]	18 1/8	[460]	
50GE**05	510	231	140	64	128	58	116	53	127	58	35 1/2	[902]	22 1/4	[565]	18 3/8	[467]	
50GE**06	555	252	152	69	135	61	126	57	141	64	35	[889]	22 1/2	[572]	19 1/2	[495]	

* - STANDARD UNIT WEIGHT IS WITHOUT ELECTRIC HEAT AND WITHOUT PACKAGING.
 FOR OTHER OPTIONS AND ACCESSORIES REFER TO THE PRODUCT DATA CATALOG.

Carrier THIS DOCUMENT IS THE PROPERTY OF CARRIER CORPORATION AND IS DELIVERED UPON THE EXPRESS CONDITION THAT THE CONTENTS WILL NOT BE DISCLOSED OR USED WITHOUT CARRIER CORPORATION'S WRITTEN CONSENT. SUBMISSION OF THESE DRAWINGS OR DOCUMENTS DOES NOT CONSTITUTE PART PERFORMANCE OR ACCEPTANCE OF CONTRACT.



NOTE:
 1. FOR ALL MINIMUM CLEARANCES LOCAL CODES OR JURISDICTIONS MAY PREVAIL.

SURFACE	SERVICE WITH:		OPERATING CLEARANCE
	CONDUCTIVE BARRIER	NONCONDUCTIVE BARRIER	
FRONT	48 [1219mm]	36 [914mm]	18 [457mm]
LEFT	48 [1219mm]	42 [1067mm]	18 [457mm]
BACK W/O HOOD	48 [1219mm]	42 [1067mm]	18 [457mm]
BACK W/HOOD	36 [914mm]	36 [914mm]	18 [457mm]
RIGHT	36 [914mm]	36 [914mm]	18 [457mm]
TOP	72 [1829mm]	72 [1829mm]	72 [1829mm]

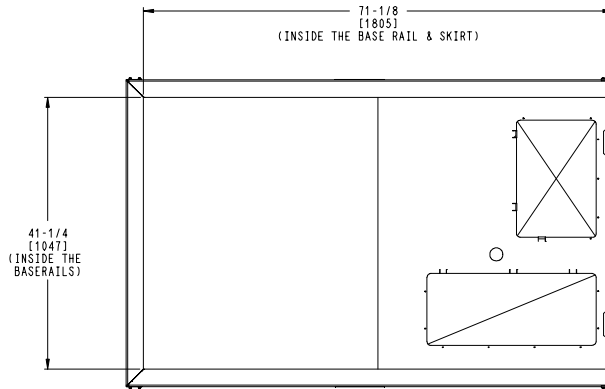
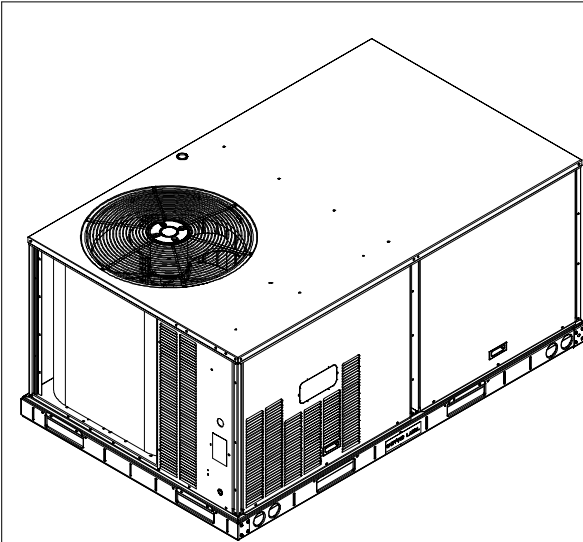
ITC CLASSIFICATION	SHEET	DATE	SUPERCEDES	50GE 04-06 SINGLE PACKAGE ELECTRICAL COOLING WITH ELECTRIC HEAT	48TC006644	REV
U.S. ECCN:NSR	2 OF 3	5/16/24	9/15/23			A

Certified Drawing for RTU-4

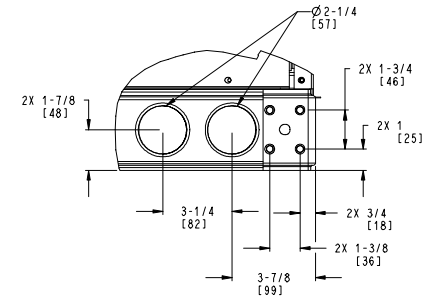
Project: Walgreens (PR) - #17240 Lexington, NC
 Prepared By:

07/21/2025
 11:19AM

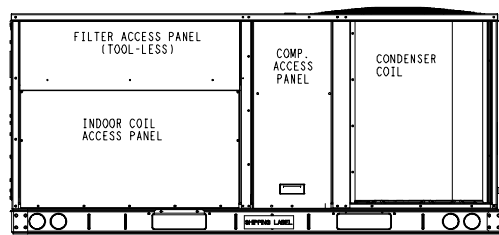
Carrier	THIS DOCUMENT IS THE PROPERTY OF CARRIER CORPORATION AND IS DELIVERED UPON THE EXPRESS CONDITION THAT THE CONTENTS WILL NOT BE DISCLOSED OR USED WITHOUT CARRIER CORPORATION'S WRITTEN CONSENT.	SUBMISSION OF THESE DRAWINGS OR DOCUMENTS DOES NOT CONSTITUTE PART PERFORMANCE OR ACCEPTANCE OF CONTRACT.
----------------	---	---



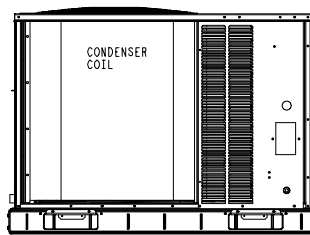
INSIDE BASERAIL DIMENSIONS
BOTTOM



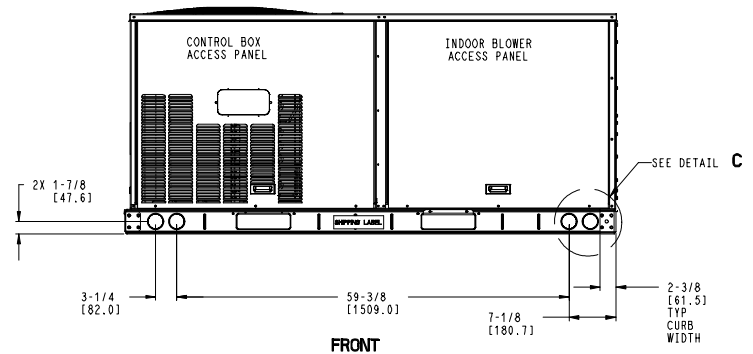
DETAIL **C**
 TYP 4 PLCS



BACK



LEFT



FRONT

ITC CLASSIFICATION	SHEET	DATE	SUPERCEDES	50GE 04-06 SINGLE PACKAGE ELECTRICAL COOLING WITH ELECTRIC HEAT	48TC006644	REV
U.S. ECCN: NSR	3 OF 3	5/16/24	9/15/23			A

Performance Summary For RTU-4

Project: Walgreens (PR) - #17240 Lexington, NC
Prepared By:

07/21/2025
11:19AM

Part Number:50GE-M05B3A5-3W4P0

Refrigerant:..... **R-454B**
ARI SEER:..... **17.20**
ARI SEER2:..... **16.80**

Base Unit Dimensions

Unit Length:..... **74.4** in
Unit Width: **46.6** in
Unit Height: **33.4** in

Operating Weight

Base Unit Weight: **555** lb
RA Smoke Detector: **7** lb
SystemVu Controller: **2** lb
ULL Enthalpy Economizer with Barometric Relief: **37** lb
Hinged Panels and Unpowered Convenience Outlet: **9** lb

Accessories

Electric Heater: **10** lb

Total Operating Weight: **620** lb

Unit

Unit Voltage-Phase-Hertz: **208-3-60**
Air Discharge:..... **Vertical**
Fan Drive Type:..... **Vane Axial**
Actual Airflow: **1300** CFM
Site Altitude:..... **768** ft

Cooling Performance

Condenser Entering Air DB: **94.0** F
Evaporator Entering Air DB: **76.4** F
Evaporator Entering Air WB: **64.7** F
Entering Air Enthalpy: **30.06** BTU/lb
Evaporator Leaving Air DB: **52.9** F
Evaporator Leaving Air WB: **52.0** F
Evaporator Leaving Air Enthalpy: **21.65** BTU/lb
Gross Cooling Capacity: **47.85** MBH
Gross Sensible Capacity: **32.12** MBH
Compressor Power Input: **3.35** kW
Coil Bypass Factor: **0.055**

Mixed Air

Outdoor Air Airflow: **260** CFM
Outdoor Air DB: **94.0** F
Outdoor Air WB: **74.0** F
Outdoor Air Htg. Temp.: **18.0** F
Return Air DB: **72.0** F
Return Air WB: **62.0** F
Return Air Htg. Temp.: **70.0** F

Heating Performance

Heating Airflow: **1300** CFM
Entering Air Temp: **59.6** F
Leaving Air Temp: **75.8** F
Electric Heating Capacity: **6.50** kW

Supply Fan

External Static Pressure: **1.00** in wg
Options / Accessories Static Pressure
Electric Heaters: **0.11** in wg

Performance Summary For RTU-4

Project: Walgreens (PR) - #17240 Lexington, NC
 Prepared By:

07/21/2025
 11:19AM

Economizer:..... **0.05** in wg
 Application External Static (ESP + Unit Opts/Acc.):..... **1.16** in wg
 Fan RPM:..... **1906**
 Fan Power:..... **0.73** BHP
 NOTE: **Selected IFM RPM Range: 1120 - 2660**

Selection includes construction throwaway filter into the base fan curve. This filter is not MERV Rated.

Electrical Data

Voltage Range: **187 - 253**
 Compressor #1 RLA:..... **14.2**
 Compressor #1 LRA:..... **112**
 Actual Electric Heater kW: **6.5**
 Electric Heater FLA:..... **18.1**
 Indoor Fan Motor Type:..... **HIGH**
 Indoor Fan Motor FLA (Total):..... **5.5**
 Power Supply MCA:..... **33**
 Disconnect Size FLA:..... **27**
 Disconnect Size LRA: **124**
 Electrical Convenience Outlet:..... **None**
 Outdoor Fan [Qty / FLA (ea)]: **1 / 2.6**
 Power Supply HACR:..... **40**
 Electric Heater Part Number: **325A**
 Electric Heater Number of Stages:..... **1**

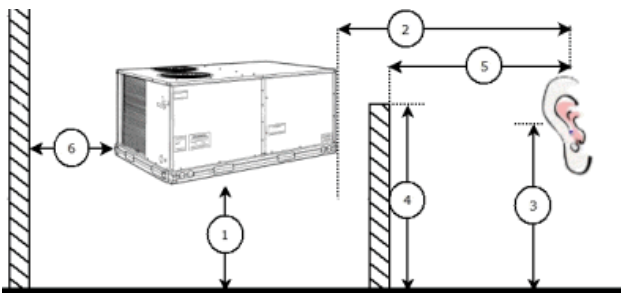
Control Panel SCCR: 5kA RMS at Rated Symmetrical Voltage

Acoustics

Sound Power Levels, db re 10E-12 Watts

	Discharge	Inlet	Outdoor
63 Hz	94.9	88.3	85.6
125 Hz	85.7	79.7	84.7
250 Hz	79.2	73.1	80.5
500 Hz	72.1	65.3	76.0
1000 Hz	68.8	67.1	72.4
2000 Hz	66.7	59.3	68.0
4000 Hz	62.7	52.4	62.8
8000 Hz	59.7	46.5	59.3
A-Weighted	77.2	71.7	79.0

Advanced Acoustics



Advanced Acoustics Parameters

1. Unit height above ground:.....**30.0** ft
 2. Horizontal distance from unit to receiver:**50.0** ft

Performance Summary For RTU-4

Project: Walgreens (PR) - #17240 Lexington, NC
 Prepared By:

07/21/2025
 11:19AM

- 3. Receiver height above ground:5.7 ft
- 4. Height of obstruction:0.0 ft
- 5. Horizontal distance from obstruction to receiver: .0.0 ft
- 6. Horizontal distance from unit to obstruction:0.0 ft

Detailed Acoustics Information

Octave Band Center Freq. Hz	63	125	250	500	1k	2k	4k	8k	Overall
A	85.6	84.7	80.5	76.0	72.4	68.0	62.8	59.3	89.2 Lw
B	59.4	68.6	71.9	72.8	72.4	69.2	63.8	58.2	78.5 LwA
C	53.2	52.3	48.1	43.6	40.0	35.6	30.4	26.9	56.8 Lp
D	27.0	36.2	39.5	40.4	40.0	36.8	31.4	25.8	46.1 LpA

Legend

- A Sound Power Levels at Unit's Acoustic Center, Lw
- B A-Weighted Sound Power Levels at Unit's Acoustic Center, LwA
- C Sound Pressure Levels at Specific Distance from Unit, Lp
- D A-Weighted Sound Pressure Levels at Specific Distance from Unit, LpA

Calculation methods used in this program are patterned after the ASHRAE Guide; other ASHRAE Publications and the AHRI Acoustical Standards. While a very significant effort has been made to insure the technical accuracy of this program, it is assumed that the user is knowledgeable in the art of system sound estimation and is aware of the tolerances involved in real world acoustical estimation. This program makes certain assumptions as to the dominant sound sources and sound paths which may not always be appropriate to the real system being estimated. Because of this, no assurances can be offered that this software will always generate an accurate sound prediction from user supplied input data. If in doubt about the estimation of expected sound levels in a space, an Acoustical Engineer or a person with sound prediction expertise should be consulted.

Performance Summary For RTU-4

Project: Walgreens (PR) - #17240 Lexington, NC
Prepared By:

07/21/2025
11:19AM

