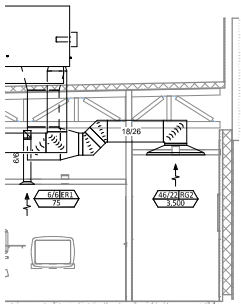


HVAC PLAN NOTES

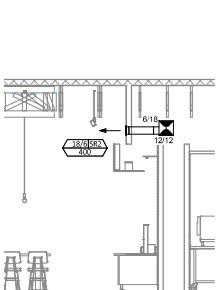
- SEE ARCHITECTURAL REFLECTED CEILING PLAN FOR CEILING MOUNTED EQUIPMENT LOCATION. TYPICAL.
- PANEL DUCTWORK VISIBLE THROUGH DINING ROOM SUPPLY REGISTERS BLACK. TYPICAL.
- PENETRATIONS THROUGH SHEAR WALL SHALL BE LIMITED TO 10" DIAMETER (OR A GROUP OF PENETRATIONS ALL CONTAINED WITHIN 10" DIAMETER). IF LARGER PENETRATIONS OR GROUPS OF PENETRATIONS ARE REQUIRED, COORDINATE WITH STRUCTURAL ENGINEER FOR APPROPRIATE BRACING. SEE STRUCTURAL DRAWINGS FOR SHEAR WALL LOCATION.
- 26/14 DUCT UP FOR TRANSITION TO RTU-1 RETURN CONNECTION IN ROOF CURB. RTU-1 SHALL HAVE AN INTEGRAL SMOKE DETECTOR MOUNTED IN THE RETURN AIR STREAM. INTERLOCK SMOKE DETECTOR TO RTU-1 OPERATION.
- 26/18 DUCT UP FOR TRANSITION TO RTU-2 RETURN CONNECTION IN ROOF CURB. RTU-2 SHALL HAVE AN INTEGRAL SMOKE DETECTOR MOUNTED IN THE RETURN AIR STREAM. INTERLOCK SMOKE DETECTOR TO RTU-2 OPERATION.
- 26/14 DUCT UP FROM BUILDING SUPPLY THROUGH ROOF. TRANSITION TO RTU-1 SUPPLY CONNECTION IN ROOF CURB.
- 30/16 DUCT UP FROM BUILDING SUPPLY TO RTU-2 SUPPLY CONNECTION. TRANSITION IN ROOF CURB.
- 14/14 DUCT UP THROUGH ROOF. TRANSITION TO MAU-1 SUPPLY CONNECTION IN ROOF CURB.
- 16/16 DUCT UP FROM HOOD THROUGH ROOF TO EF-1 COMPLIANT WITH NFPA 96. PROVIDE RADIUS AT ELBOWS WITH AN INSIDE RADIUS OF 0.5W AT ELBOWS IN GREASE DUCT.
- 8/6 DUCT UP THROUGH ROOF TO EF-2.
- 28/6 DUCT DOWN TO MAKEUP AIR PDP DUCT CONNECTION. TRANSITION TO SUPPLY PLENUM OPENING SIZE. TYPICAL FOR 3.
- 8" DIA. DUCT DOWN TO AG PDP DUCT CONNECTION. TRANSITION TO SUPPLY PLENUM OPENING SIZE. TYPICAL. CAP UNUSED DUCT CONNECTIONS.
- INSTALL SINGLE-GANG VERTICAL J-BOX FOR GRIDPOINT THERMOSTATS FURNISHED BY TEMS FOR RTU-1 AND RTU-2 AT THIS LOCATION AT 48" AFF. COORDINATE WITH ELECTRICAL SWITCHING IN THIS AREA. PROVIDE WIRING AS SHOWN IN DETAIL 8/ETD.
- INSTALL GRIDPOINT ZONE SENSOR MODULE FURNISHED BY TEMS FOR RTU-1 AT THIS LOCATION 72" AFF DIRECTLY TO WALL (NO JUNCTION BOX). COORDINATE LOCATION WITH EQUIPMENT. PROVIDE WIRING AS SHOWN IN DETAIL 8/ETD.
- INSTALL GRIDPOINT ZONE SENSOR MODULE FURNISHED BY TEMS FOR RTU-2 AT THIS LOCATION 66" AFF DIRECTLY TO WALL (NO JUNCTION BOX). COORDINATE LOCATION WITH EQUIPMENT. PROVIDE WIRING AS SHOWN IN DETAIL 8/ETD.
- INSTALL GRIDPOINT SUPPLY PROBE FURNISHED BY TEMS FOR RTU-1 IN THE SUPPLY DUCTWORK UPSTREAM FROM THE FIRST BRANCH CONNECTION. PROVIDE WIRING AS SHOWN IN DETAIL 8/ETD.
- INSTALL GRIDPOINT SUPPLY PROBE FURNISHED BY TEMS FOR RTU-2 IN THE SUPPLY DUCTWORK UPSTREAM FROM THE FIRST BRANCH CONNECTION. PROVIDE WIRING AS SHOWN IN DETAIL 8/ETD.
- INSTALL REMOTE TEMPERATURE SENSOR FOR HOOD HD-1 AT THIS LOCATION 72" AFF. COORDINATE LOCATION WITH EQUIPMENT. PROVIDE (2) #18 G. THERMISTOR CABLE FROM TEMPERATURE SENSOR TO HOOD CONTROL PANEL.
- INSTALL KITCHEN HOOD, HD-1. SUPPORT HOOD PER MANUFACTURER'S INSTALLATION INSTRUCTIONS AND AS DETAILED IN THE ARCHITECTURAL AND STRUCTURAL DRAWINGS. INSTALL HOOD ACCORDING TO THE REQUIREMENTS OF THE LISTING, IN COMPLIANCE WITH NFPA-96, THE BUILDING CODE, AND AUTHORITIES HAVING JURISDICTION. HOOD SHALL HAVE AN INTEGRAL DUCT COLLAR TEMPERATURE SENSOR TO AUTOMATICALLY ENERGIZE THE EXHAUST AND MAKEUP AIR FANS IF COOKING TEMPERATURES ARE DETECTED. EXHAUST DUCT SYSTEM TO BE WELDED OR FACTORY-MANUFACTURED WATER AND AIR TIGHT. INSTALL CLEANOUTS PER CODE AND AS SHOWN. INSTALL HOOD PER DETAILS 2, 4, AND 9/M70D. CHIPOTLE WILL PROVIDE AN INDEPENDENT TESTING AGENCY FOR TESTING THE INTEGRITY OF THE GREASE DUCT SYSTEM.

HVAC PLAN NOTES

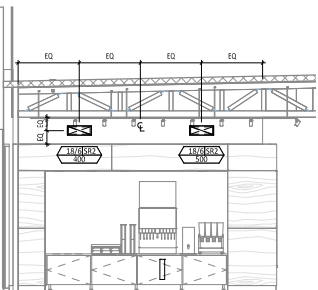
- INSTALL REMOTE CONDENSING UNIT FOR WALK-IN COOLER ON ROOF AS DETAILED IN THE ARCHITECTURAL AND STRUCTURAL DRAWINGS. INSTALL REFRIGERANT LINE SET, THERMOSTATIC EXPANSION VALVE, SOLENOID VALVE, TEMPERATURE CONTROL, SIGHT GLASS, FILTER DRIER, PRESSURE CONTROL, LOW AMBIENT CONTROLS, AND WEATHERPROOF HOUSING. TRAP AND SLOPE REFRIGERANT LINES PER MANUFACTURER'S RECOMMENDATIONS. INSTALLATION SHALL COMPLY WITH ASHRAE/ANSI STANDARD 15. INSTALL THE REFRIGERANT LINE SET UNDER THE ROOF DECK TO WITHIN 3" OF THE CONDENSING UNIT. CUT 2-1/2" HOLE IN WALK-IN COOLER ROOF FOR REFRIGERANT LINE SET AND SEAL PER THE COOLER MANUFACTURER'S INSTALLATION INSTRUCTIONS AFTER LINE SET IS INSTALLED.
- INSTALL REMOTE CONDENSER FOR ICE MACHINE ON ROOF AS DETAILED IN THE ARCHITECTURAL AND STRUCTURAL DRAWINGS. INSTALL REFRIGERANT LINE SET, THERMOSTATIC EXPANSION VALVE, SOLENOID VALVE, TEMPERATURE CONTROL, SIGHT GLASS, FILTER DRIER, PRESSURE CONTROL, LOW AMBIENT CONTROLS, AND WEATHERPROOF HOUSING. TRAP AND SLOPE REFRIGERANT LINES PER MANUFACTURER'S RECOMMENDATIONS. SEAL PIPING PENETRATIONS THROUGH ROOF. INSTALLATION SHALL COMPLY WITH ASHRAE/ANSI STANDARD 15. INSTALL THE REFRIGERANT LINE SET UNDER THE ROOF DECK TO WITHIN 3" OF THE REMOTE CONDENSER. IF REFRIGERANT PIPING TO ICE MAKER IS EXPOSED TO PUBLIC VIEW CONCEAL WITHIN A STAINLESS STEEL SHROUD AS SHOWN IN THE ARCHITECTURAL DRAWINGS.
- INSTALL EXHAUST FAN EF-1 PER DETAIL 5/M70D AND AS DETAILED IN THE ARCHITECTURAL AND STRUCTURAL DRAWINGS. INSTALL GREASE WRECGUARD SYSTEM FURNISHED BY CHIPOTLE ON EXHAUST FAN, EF-1.
- PROVIDE SUPPLY DIFFUSER CONNECTION TO SUPPLY SYSTEM PER DETAIL 1/M70D. TYPICAL.
- PROVIDE AUDIO-VISUAL REMOTE SMOKE DETECTOR ANNUNCIATOR WITH REMOTE KEY OPERATED RESET. WIRE A UNIT BACK TO EACH SMOKE DETECTOR. MOUNT UNIT 60" AFF. TYPICAL.
- INSTALL REME HALO AIR PURIFIER FURNISHED BY TUV IN RTU PER DETAIL 6/M70D. SEE ELECTRICAL DRAWINGS FOR POWER CONNECTION INFORMATION. INSTALL UV WARNING STICKERS ON FACE OF ENCLOSURE PER DETAIL AND ON ANY RTU ACCESS DOORS THROUGH WHICH THE REME HALO WOULD BE VISIBLE IF OPENED.
- MAINTAIN 10' CLEARANCE BETWEEN WATER HEATER FLE TERMINATION AND OUTSIDE AIR INTAKES. MAINTAIN 6' CLEARANCE BETWEEN WATER HEATER COMBUSTION AIR INTAKE AND EXHAUST FAN EF-1 DISCHARGE. SEE PLUMBING DRAWINGS FOR MORE INFORMATION ON WATER HEATER FLE AND COMBUSTION AIR TERMINATIONS.
- ADJUST SUPPLY REGISTERS SO THAT SUPPLY AIR FITS WALL ON OPPOSITE SIDE OF ROOM AT APPROXIMATELY 7' AFF WITH NO DRAFTS FELT IN THE DINING ROOM.



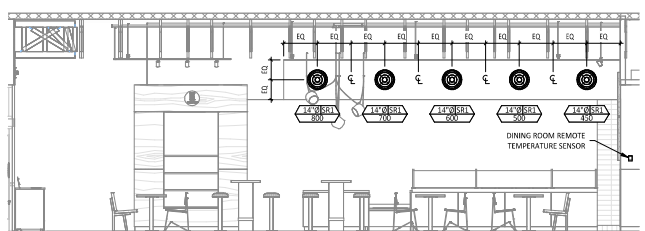
HVAC DINING ROOM RETURN SECTION
1/4" = 1'-0"



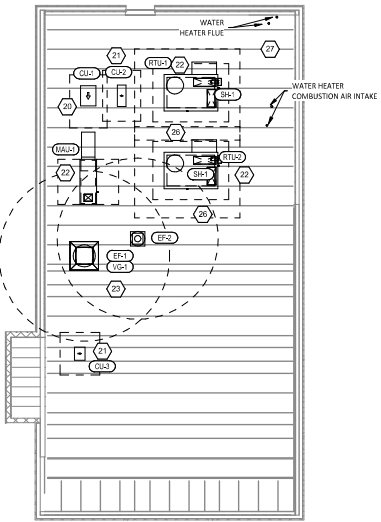
HVAC DINING ROOM SECTION
1/4" = 1'-0"



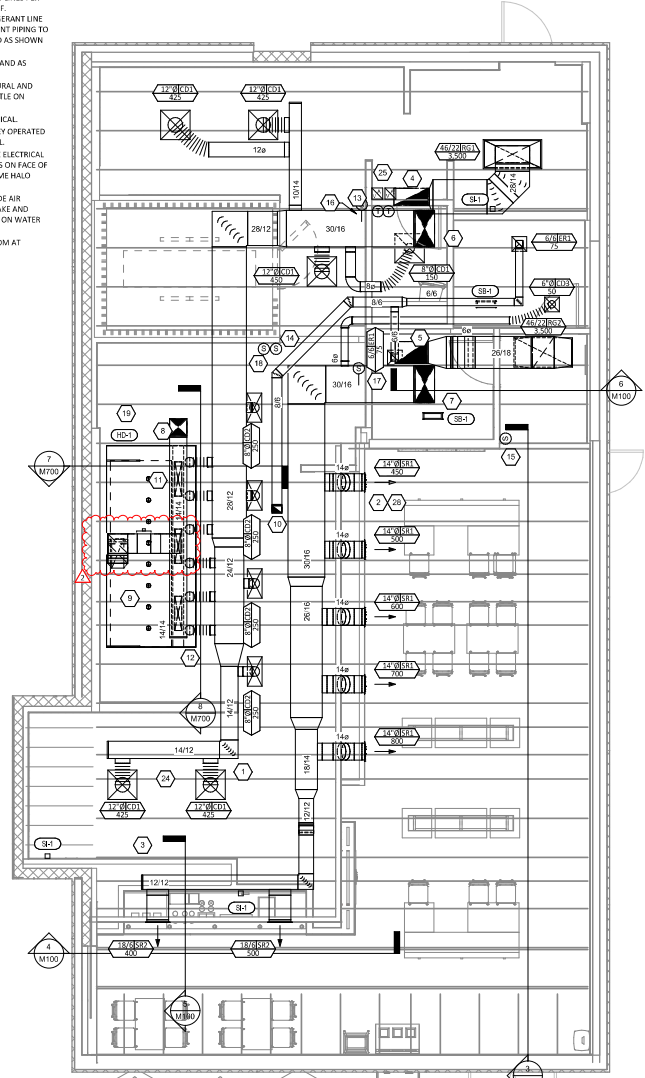
HVAC DINING ROOM SECTION
1/4" = 1'-0"



HVAC DINING ROOM SECTION
1/4" = 1'-0"



HVAC ROOF PLAN
1/8" = 1'-0"



HVAC FLOOR PLAN
1/4" = 1'-0"

NATIONAL
4635 Trueman Blvd, Suite 250
Hilliard, Ohio 43026
Phone: (614) 751-9610
Fax: (614) 552-5240
Contact: Andy Janosik
(614) 328-2028
ajanosik@nationalengineering.com

FOR CONSTRUCTION

CHIPOTLE MEXICAN GRILL, INC.
1491 E EMERSON DR. NE
PALM BAY, FL 32907



STORE NO.: 5338
PALM BAY
1491 E EMERSON DR. NE
PALM BAY, FL 32907

Issue:	09.09.2024	PERMIT SET
Drawn:	10.23.2024	BD SET
Checked:	01.26.2025	CONSTRUCTION SET
Revised:	01.24.25	DB UPDATES

Drawn: []
Checked: []
AJJ
AJJ
Project No: 2401013
Contract: HVAC PLAN

M100

PLUMBING SUPPLY PLAN NOTES

- CONNECT TO EXISTING 1-1/2" WATER SERVICE WITH UPSTREAM METER, BFP, AND BOOSTER PUMP.
- PROVIDE 1/2" FILTERED WATER TO THE BAG-IN-BOX SODA CARBONATOR AT 100" AFF. SODA CARBONATOR SHALL HAVE AN INTEGRAL ASSE 1022-RATED CARBONATED BEVERAGE BACKFLOW PREVENTION DEVICE.
- PROVIDE WATER HEATERS DWH-1 AND DWH-2 PER DETAIL 1/P700.
- PROVIDE WATER FILTERS MOUNTED TO WALL PER DETAIL 1/P700. PROVIDE 1/2" SUPPLY PIPES FROM FILTERS TO ICE MAKER AND SODA CARBONATOR AS SHOWN.
- PROVIDE 1/2" FILTERED WATER ROUGH-IN TO THE ICE MAKER AT 36" AFF. PROVIDE 6' LONG STAINLESS STEEL FLEXIBLE BRAIDED WASHING MACHINE WATER CONNECTOR WITH MINIMUM 0.43" ID (BRASSCRAFT SL12-72WA F OR EQUAL) FOR FINAL CONNECTION TO ICE MAKER.
- PROVIDE DOMESTIC WATER ROUGH-INS FOR THE MOP BASIN FAUCET AT 36" AFF. PROVIDE DOMESTIC WATER ROUGH-INS FOR THE CHEMICAL DISPENSER FAUCET (HB-1) AT 64" AFF. DIRECTLY ABOVE THE MOP BASIN FAUCET. SEE ARCHITECTURAL ELEVATION FOR ADDITIONAL INFORMATION.
- CONNECT TO EXISTING GAS LINE WITH UPSTREAM METER.
- PROVIDE GAS CONNECTIONS TO THE COOKING EQUIPMENT PER DETAIL 7/P700.
- SUPPORT THE GAS PIPE ON THE ROOF PER DETAIL 5/P700. WOOD BLOCKING IS NOT AN ACCEPTABLE METHOD OF SUPPORTING THE GAS PIPE.
- PROVIDE ACCESSIBLE LINE-SIZED GAS VALVE, DIRT LEG, AND UNION AT GAS CONNECTION TO THE EQUIPMENT.
- REFER TO ARCHITECTURAL DRAWINGS FOR PAINTINGS OF INTERIOR AND EXTERIOR EXPOSED GAS PIPE.
- PROVIDE DOMESTIC WATER ROUGH-INS FOR THE CHEMICAL DISPENSER FAUCET (HB-1) AT 52" AFF. SEE ARCHITECTURAL ELEVATION FOR ADDITIONAL INFORMATION.
- PROVIDE DOMESTIC WATER ROUGH-INS FOR THE VICTORY WASH DISPENSER FAUCET (HB-2) AT 52" AFF. SEE ARCHITECTURAL ELEVATION FOR ADDITIONAL INFORMATION.
- PROVIDE ROUGH-INS TO RESTROOM HAND SINKS AS SHOWN IN DETAIL 14/P700. HOT WATER MAIN LINE TO BE ROUTED WITHIN 6 INCHES OF RESTROOM HAND SINK STOP VALVE.
- PROVIDE KITCHEN EQUIPMENT GAS SHUTOFF 6" BELOW THE CEILING PER DETAIL 4/P700.

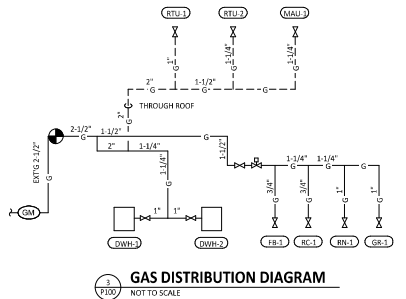
PLUMBING SUPPLY PLAN NOTES

- CONNECT CHEMICAL DISPENSER TO HB-1. CHEMICAL DISPENSER HAS AN INTEGRAL AIR GAP AS IS SHOWN IN DETAIL 10/P700.
- PROVIDE ASSE 4516/1070 POINT-OF-USE THERMOSTATIC MIXING VALVE, WATTS LFUSG-B, ON WATER SUPPLY TO KITCHEN HAND SINKS. PROVIDE ANGLE STOP BELOW SINK, FASTEN MIXING VALVE TO WALL, AND MAKE FINAL CONNECTION FROM ANGLE STOP TO MIXING VALVE AND FROM MIXING VALVE TO FAUCET USING BRAIDED STAINLESS STEEL HOSE. ADJUST MIXING VALVE FOR A DISCHARGE TEMPERATURE OF APPROXIMATELY 110° F.
- PROVIDE ACCESSIBLE VALVE IN WATER SUPPLY TO FIXTURE AS SHOWN.
- PROVIDE GAS CONNECTION TO THE RICE COOKER PER DETAIL 6/P700.
- PROVIDE GAS ROUGH-IN TO FRYER BEHIND RICE COOKER TABLE SO THAT VALVES AND DIRT LEG ARE ACCESSIBLE ONCE FRYER IS SECURED INTO PLACE.
- PROVIDE 1/2" FILTERED WATER ROUGH-IN TO THE ICE MAKER AT 24" AFF. PROVIDE 6' LONG STAINLESS STEEL FLEXIBLE BRAIDED WASHING MACHINE WATER CONNECTOR WITH MINIMUM 0.43" ID (BRASSCRAFT SL12-72WA F OR EQUAL) FOR FINAL CONNECTION TO ICE MAKER.
- INSTALL RGF IM5B ICE MAKER SANITIZER FURNISHED BY TUV PER CHIPOTLE'S INSTALLATION INSTRUCTION.
- PROVIDE 3/4" DOMESTIC HOT AND COLD WATER ROUGH-INS FOR THE PREP SINK (SK-2) FAUCET AT 24" AFF TO ALLOW FOR THE VICTORY WASH CHEMICAL DOCK TO BE INSTALLED DIRECTLY BELOW THE PREP SINK BASIN. MAKE FINAL CONNECTION TO PREP SINK FAUCET USING 3/4" BRAIDED STAINLESS STEEL WATER HEATER CONNECTOR HOSE.
- PROVIDE 1/2" HOT WATER TO THE DISH MACHINE AT 66" AFF ABOVE LEFT SIDE OF DISH MACHINE. MAKING FINAL CONNECTION USING HOSE FURNISHED WITH DISH MACHINE. PROVIDE WATER HAMMER ARRESTOR ON HOT WATER LINE.
- PROVIDE ROOF HYDRANT RH-1 WITH BOTTOM OF NOZZLE INSTALLED 24" ABOVE THE BOTTOM OF ROOF DECK. PROVIDE ACCESSIBLE ISOLATION VALVE IN WATER SUPPLY TO ROOF HYDRANT. SUPPORT ROOF HYDRANT PER THE MANUFACTURER'S INSTALLATION INSTRUCTIONS.
- PROVIDE FILTERED DOMESTIC WATER ROUGH-IN FOR THE SPEED FILL POT FILLER FAUCET (PF-1) AT 40" AFF. SEE ARCHITECTURAL ELEVATION FOR DETAIL.
- INSTALL RGF IM5B ICE MAKER SANITIZER FURNISHED BY TUV PER CHIPOTLE'S INSTALLATION INSTRUCTIONS. LOCATE IM5B BELOW UTENSIL COUNTER IN A LOCATION THAT DOES NOT INTERFERE WITH THE ROSSING RACK BELOW THE UTENSIL COUNTER.
- PENETRATIONS THROUGH SHEAR WALL SHALL BE LIMITED TO 10" DIAMETER (OR A GROUP OF PENETRATIONS ALL CONTAINED WITHIN 10" DIAMETER). IF LARGER PENETRATIONS OR GROUPS OF PENETRATIONS ARE REQUIRED COORDINATE WITH STRUCTURAL ENGINEER FOR APPROPRIATE BRACING. SEE STRUCTURAL DRAWINGS FOR SHEAR WALL LOCATION.
- PROVIDE ACCESSIBLE TRAP PRIMER ABOVE 14" IN CEILING AS SHOWN. INSTALL PER MANUFACTURER'S INSTALLATION INSTRUCTIONS WITH A SERVICE VALVE AT THE TRAP PRIMER INLET. PROVIDE 1/2" DISTRIBUTION PIPES TO FLOOR DRAIN TRAP PRIMER CONNECTIONS) AS SHOWN. HORIZONTAL DISTRIBUTION PIPING SHALL HAVE CONTINUOUS SLOPE TO THE FLOOR DRAIN(S).
- REPLACE STOCK WATER CLOSET HANDLE WITH UNIVERSAL CABLE-OPERATED HANDLE (FLUSHMATE AF305003 OR AP305004 - FIELD VERIFY COMPATIBILITY WITH FLUSHMATE SYSTEM IN WATER CLOSET).

PLUMBING GAS CONNECTIONS

TAG	DESCRIPTION	CONNECTION SIZE	EQUIVALENT LENGTH	INPUT	
DWH-1	WATER HEATER (GAS TANKLESS)	3/4"	65'	159,000 Btu/h	
DWH-2	WATER HEATER (GAS TANKLESS)	3/4"	65'	159,000 Btu/h	
FB-1	GAS FRYER	3/4"	85'	90,000 Btu/h	
GR-1	GAS GRIDDLE	3/4"	95'	110,000 Btu/h	
MAU-1	DIRECT FIRED MAKEUP AIR UNIT	1/2"	70'	235,000 Btu/h	
RC-1	RICE COOKER	3/4"	90'	33,000 Btu/h	
RB-1	R BURNER RANGE	3/4"	95'	152,000 Btu/h	
RTU-1	KITCHEN ROOFTOP UNIT	3/4"	50'	224,000 Btu/h	
RTU-2	DINING ROOM ROOFTOP UNIT	3/4"	65'	224,000 Btu/h	
GRAND TOTAL				MAX 95'	1,496,000 Btu/h

- NOTES:
 1. PRESSURE REQUIRED AFTER METER: 7" W.C.
 2. DISTANCES ARE APPROXIMATE



GAS DISTRIBUTION DIAGRAM
NOT TO SCALE

PLUMBING FIXTURE SUPPLY CONNECTIONS

ROUGH-IN TYPE KEY

ANGLE 3/8" BRASS CRAFT KTR19 OR EQUAL (BRASS/CHROME 1/4 TURN ANGLED BALL STOP WITH 3/8" COMPRESSION CONNECTION).

ANGLE 1/2" BRASS CRAFT R39X OR EQUAL (BRASS/CHROME MULTI-TURN ANGLED STOP WITH 1/2" COMPRESSION CONNECTION).

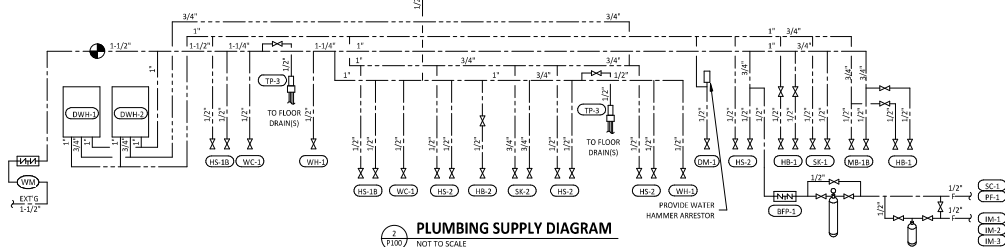
ANGLE 3/4" EVERELOW F432 NL W/ 3/4" SWEAT X MIP ADAPTER OR EQUAL (BRASS ANGLE STOP W/ 3/4" FIP INLET AND OUTLET).

DIRECT PROVIDE COPPER PIPE IN CONNECTION SIZE SHOWN TO FIXTURE.

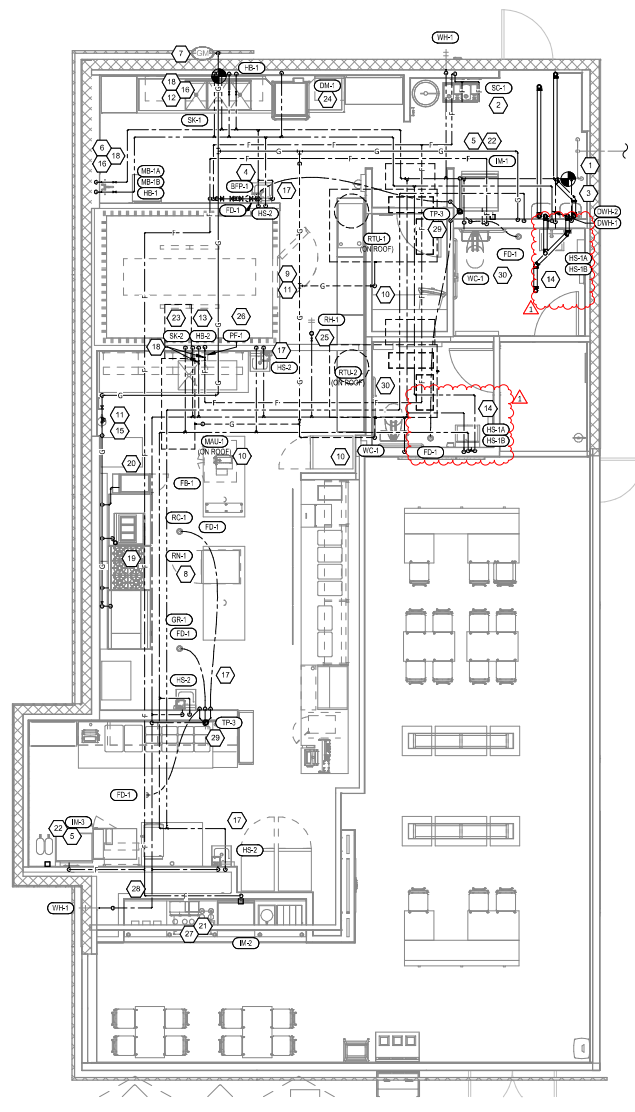
HOST 1/2" BROWNIHART BRASS W/50F OR EQUAL (BRASS/CHROME WASHING MACHINE VALVE W/ 2" MIP OUTLET).

MIP PROVIDE PIPE WITH MIP THREADED STUBBED OUT OF WALL IN CONNECTION SIZE SHOWN AND LENGTH COMPATIBLE WITH FIXTURE AND WALL MATERIAL/FINISHES.

TAG	DESCRIPTION	CONNECTION SIZE		ROUGH-IN TYPE	WSFU				
		CW	HW		CW	HW	TOTAL		
BFP-1	RP2 BACKFLOW PREVENTER	1/2"		DIRECT	0	0	0	1	0
DM-1	DISH SANITIZING MACHINE (PUMPED OUTLET)	0"	1/2"	HOSE 1/2"	0	3	3	1	3
ET-1	EXPANSION TANK	3/4"		DIRECT	0	0	0	1	0
HB-1	CHEMICAL DISPENSER HOSE BIB	1/2"	1/2"	MIP	2.25	2.25	3	2	6
HB-2	VEGETABLE WASH HOSE BIB	1/2"		MIP	1.5	1.5	1.5	1	1.5
HS-1B	RESTROOM HAND SINK FAUCET	1/2"	1/2"	MIP	1.5	1.5	2	2	4
HS-2	KITCHEN HAND SINK	1/2"	1/2"	ANGLE 3/8"	1.5	1.5	2	4	8
IM-1	ICE MAKER - 80H	1/2"		HOSE 1/2"	1	1	1	1	1
IM-2	ICE MAKER - SODA	1/2"		HOSE 1/2"	1	1	1	1	1
IM-3	ICE MAKER - SODA	1/2"		HOSE 1/2"	1	1	1	1	1
MB-1B	MOP SINK FAUCET	1/2"	1/2"	MIP	2.25	2.25	3	1	3
PF-1	SPEED FILL FAUCET	3/8"		MIP	1.5	1.5	1.5	1	1.5
RH-1	FREEZE PROOF ROOF HYDRANT	3/4"		DIRECT	1	1	1	1	1
SC-1	BAG-IN-BOX SODA RACK WITH CARBONATORS	1/2"	1/2"	ANGLE 3/8"	1	1	1	1	1
SK-1	THREE COMPARTMENT SINK	1/2"	1/2"	ANGLE 1/2"	3	3	4	1	4
SK-2	PREP SINK	3/4"	3/4"	ANGLE 3/4"	3	3	4	1	4
TP-8	TRAP PRIMER (THREE-FOUR FLOOR DRAINS)	1/2"		DIRECT	0	0	0	2	0
WC-1	WATER CLOSET	1/2"		ANGLE 1/8"	2	2	2	2	4
WH-1	FREEZE PROOF WALL HYDRANT	3/4"		DIRECT	1	1	1	2	2
GRAND TOTAL									46



PLUMBING SUPPLY DIAGRAM
NOT TO SCALE



PLUMBING SUPPLY PLAN
1/4" = 1'-0"

4635 Trueman Blvd, Suite 250
 Hilliard, Ohio 43026
 Phone: (614) 751-9610
 Fax: (614) 552-5240
 Contact: Andy Janssik
 (614) 328-2028
 ajanssik@nationalengineering.com

FOR CONSTRUCTION

Copyright 2025
 THE DRAWINGS ARE NOT FOR THE USE OF SERVICE AND AS SUCH REMAINS THE PROPERTY OF CHIPOTLE MEXICAN GRILL, INC. PERMISSION FOR USE OF THE DOCUMENT IS LIMITED AND CAN BE REVOKED ONLY BY WRITTEN AGREEMENT WITH CHIPOTLE MEXICAN GRILL, INC.

CHIPOTLE MEXICAN GRILL, INC.
 PO BOX 813568
 COLUMBUS, OH 43281-2568
 TELEPHONE: 614 392-2400
 INTERNET: WWW.CHIPOTLE.COM

STORE NO.: 5338
 PALM BAY
 1491 EMERSON DR. NE
 PALM BAY, FL 32907

Issue Record:

DATE	DESCRIPTION
09.09.2024	PERMIT SET
10.23.2024	BID SET
01.29.2025	CONSTRUCTION SET

Drawn: _____
 Checked: _____
 All: _____

Project No:
 2401013

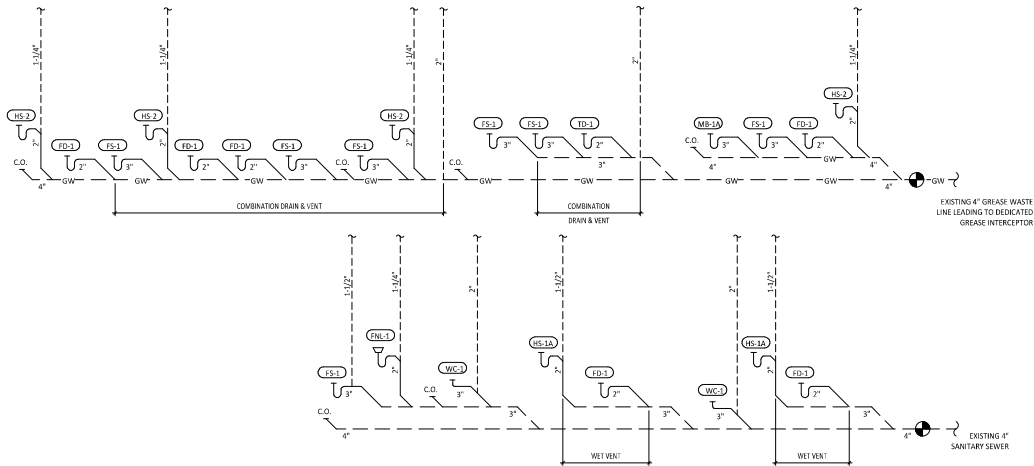
CONTRACT:
PLUMBING PLAN
WATER & GAS

P100

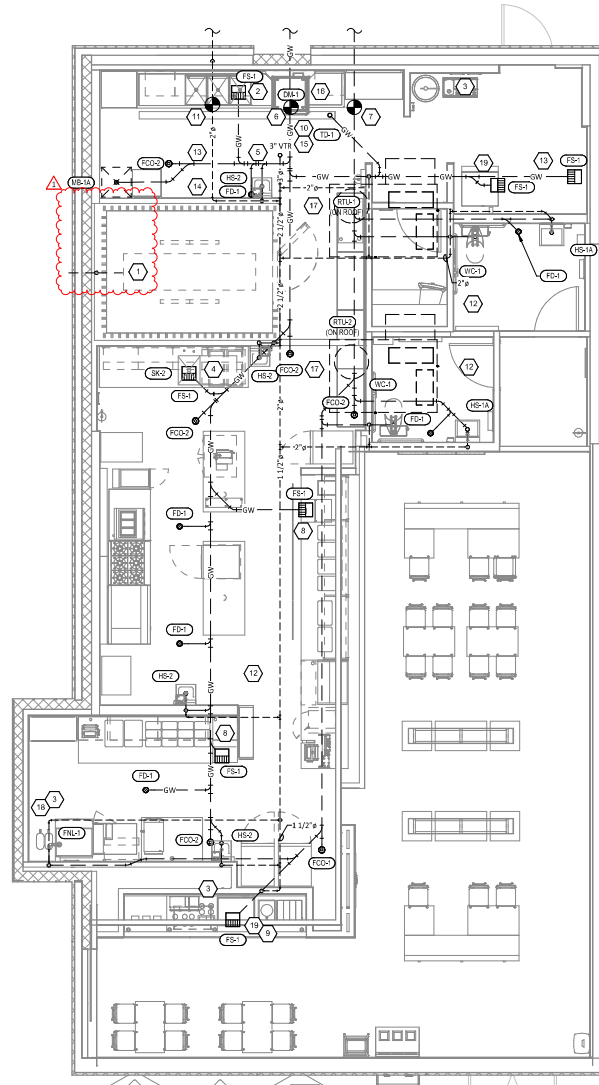
PLUMBING WASTE AND VENT PLAN NOTES

- 1 PROVIDE 3/4" CONDENSATE DRAIN FROM THE WALK-IN COOLER EVAPORATOR TO A DRYWELL PER DETAIL 16/P700. SLOPE CONDENSATE DRAIN A MINIMUM OF 1" PER FOOT. HOLD EXPOSED CONDENSATE DRAIN IN WALK-IN COOLER AS HIGH AS POSSIBLE. CONCEAL DRAIN PIPING WITHIN FRAMED WALLS AS SHOWN. DISCHARGE THROUGH AN AIR GAP. MAKE FINAL CONNECTION TO EVAPORATOR INSIDE WALK-IN COOLER USING A UNION.
- 2 PROVIDE DRAIN CONNECTIONS TO THE THREE COMPARTMENT SINK PER DETAIL 2/P700
- 3 COORDINATE ROUTING OF SODA BUNDLES WITH COCA-COLA TECHNICIAN FROM BAG-IN-BOX AREA TO EACH SODA FOUNTAIN. OTHER THAN WITHIN THE WALLS DOWN TO THE DRYER BOX THE SODA BUNDLE SHALL BE ROUTED OVERHEAD WITHOUT CONDUIT. COORDINATE SUPPORT AND ROUTING OF THE SODA LINE BUNDLES WITH COCA-COLA TECHNICIAN DURING TROUGH IN AND PROVIDE NECESSARY SUPPORTS. SEE ARCHITECTURAL DRAWINGS FOR SODA BUNDLE TERMINATION LOCATION AND PROVIDE TERMINATION PER DETAIL 12/P700.
- 4 PROVIDE DRAIN LINES FROM THE FOOD PREP SINK TO THE FLOOR SINK. PROVIDE AN AIR GAP AT THE DISCHARGE TO THE FLOOR SINK.
- 5 PROVIDE A 3" VENT THROUGH THE ROOF PER DETAIL 3/P700.
- 6 CONNECT TO EXISTING 4" GREASE WASTE LINE LEADING TO EXISTING DEDICATED 1,250 GALLON GREASE INTERCEPTOR.
- 7 CONNECT TO EXISTING 4" SANITARY SEWER.
- 8 PROVIDE 3/4" VALVED DRAIN FROM HOT FOOD TABLE TO THE FLOOR SINK. DRAIN THROUGH AN AIR GAP.
- 9 PROVIDE INSULATED COPPER DRAIN LINES FROM THE TEA TRAY DRAIN AND THE SODA MACHINE DRAIN TO THE FLOOR SINK. DRAIN THROUGH AN AIR GAP. HOLD TEA TRAY DRAIN AS HIGH AS POSSIBLE AND SECURE TO STRUCTURE BELOW THE UTENSIL COUNTER.
- 10 TRIM TRENCH DRAIN ENDS PER THE MANUFACTURER'S INSTALLATION INSTRUCTIONS PRIOR TO INSTALLATION SO THAT GRATE FITS WITHOUT GAPS. INSTALL TRENCH DRAIN WITH SLIGHT POSITIVE SLOPE TOWARD THE DRAIN CONNECTION TO AVOID STANDING WATER IN TRENCH DRAIN.
- 11 CONNECT TO EXISTING 2" VENT FROM GREASE INTERCEPTOR.
- 12 DO NOT PROVIDE WALL CLEANOUTS ON TILE OR PORCELAIN-VISIBLE WALLS. IF A WALL CLEANOUT IS REQUIRED ON THESE SURFACES COORDINATE THE EXACT LOCATION WITH CHIPOTLE'S CONSTRUCTION MANAGER.
- 13 PROVIDE INDIRECT WASTE AND CONDENSATE DRAINS FROM FIXTURES OTHER THAN KITCHEN SINKS CONCEALED IN THE WALL AS SHOWN IN DETAIL 9/P700.
- 14 PROVIDE DRAIN FROM WATER FILTER BFP TO FLOOR DRAIN CONCEALED IN THE WALL AS SHOWN IN DETAIL 9/P700.
- 15 PROVIDE TRENCH DRAIN AS SHOWN IN DETAIL 15/P700.
- 16 INSTALL DRAIN HOSE FURNISHED WITH DISH MACHINE FROM DISH MACHINE OUTLET TO FLOOR SINK. HOLD DRAIN HOSE TIGHT TO WALL AND SECURE TO 3 COMP SINK DRAIN TO MAINTAIN AN AIR GAP AT THE FLOOR SINK.
- 17 PROVIDE CONDENSATE TRAP ON RTU PER DETAIL 13/P700.
- 18 SEE DETAIL 18/P700 FOR DRAINS FROM TEA TRAY, ICE MAKER, AND SODA MACHINE TO FUNNEL DRAIN.
- 19 PROVIDE PVC DRAIN PIPES FROM THE ICE MACHINE TO THE FLOOR SINK PER THE MANUFACTURER'S INSTALLATION INSTRUCTIONS. PROVIDE A COOD-APPROVED AIR GAP AT THE DISCHARGE TO THE FLOOR SINK. SECURE ICE MAKER DRAIN PIPES TO THE BOTTOM OF THE ICE MAKER.

PLUMBING FIXTURE WASTE CONNECTIONS				
TAG	DESCRIPTION	CONNECTION SIZE - WASTE	DFU	TOTAL DFU
DM-1	DISH SANITIZING MACHINE (DISHED OUTLET)	5/8"	7	1
FCO-1	FLOOR CLEANOUT (3")	3"	0	1
FCO-2	FLOOR CLEANOUT (4")	4"	0	5
FD-1	FLOOR DRAIN	2"	2	6
FD-2	FLOOR DRAIN	2"	2	1
FS-1	FLOOR SINK	3"	5	7
HS-1A	BESTROOM HAND SINK	2"	1	2
HS-2	KITCHEN HAND SINK	2"	1	4
MB-3A	MOP BASKET	3"	2	1
SK-1	THREE COMPARTMENT SINK	2"	0	1
SK-2	PREP SINK	2"	0	1
TD-1	TRENCH DRAIN	2"	2	1
WC-1	WATER CLOSET	3"	4	2
GRAND TOTAL				74



2
110 SANITARY WASTE & VENT DIAGRAM
NOT TO SCALE



3
110 SANITARY WASTE & VENT PLAN
1/4" = 1'-0"

NATIONAL
4635 Trueman Blvd, Suite 250
Hilliard, Ohio 43026
Phone: (614) 751-9610
Fax: (614) 552-5240
Contact: Andy Janssik
(614) 328-2028
ajanssik@nationalengineering.com

FOR
CONSTRUCTION

Copyright 2025
THIS DRAWING IS AN INSTRUMENT OF SERVICE
AND AS SUCH REMAINS THE PROPERTY OF
CHIPOTLE MEXICAN GRILL, INC. PERMISSION FOR
USE OF THIS DOCUMENT IS LIMITED AND CAN BE
REVOKED ONLY BY WRITTEN AGREEMENT WITH
CHIPOTLE MEXICAN GRILL, INC.



STORE NO.: 5338
PALMI BAY
1491 EMERSON DR. NE
PALMI BAY, FL 32907

Issue Record:
09.09.2024 PERMIT SET
10.23.2024 BID SET
01.26.2025 CONSTRUCTION SET

Revisions:
1 11.19.24 CODE COMMENTS

Drawn: AJJ
Checked: AJJ

Project No:
2401013

Contents:
PLUMBING PLAN
WASTE & VENT

P110

LIGHTING CONTROL PANEL SCHEDULE: LCP

RELAY	PANEL	CIRCUIT	AREA SERVED	CONTROL	TIME ON	TIME OFF	NOTES
R1	A	32	KITCHEN A	TIMELOCK	7:00:00 AM	12:00:00 AM	SINGLE POLE (NC)
R2	A	32	KITCHEN B	TIMELOCK	7:00:00 AM	12:00:00 AM	SINGLE POLE (NC)
R3	A	30	DINING ROOM A	TIMELOCK	10:00:00 AM	12:00:00 AM	SINGLE POLE (NC)
R4	A	30	DINING ROOM B	TIMELOCK	10:00:00 AM	12:00:00 AM	SINGLE POLE (NC)
R5	A	30	DINING ROOM C	TIMELOCK	10:00:00 AM	12:00:00 AM	SINGLE POLE (NC)
R6	A	28	RESTROOM EXHAUST FAN	TIMELOCK	7:00:00 AM	12:00:00 AM	SINGLE POLE (NC)
R8	A	42	EXT. LIGHTING/SIGNALAGE	TIMELOCK	SUNSET - 1 HR	12:00:00 AM	SINGLE POLE (NC)

LIGHTING CONTROL PANEL SCHEDULE NOTES

A. DUPLICATE PANEL SCHEDULE AND PERMANENTLY INSTALL WITHIN THE LIGHTING CONTROL PANEL.

LIGHTING CONTROL COMPONENTS SCHEDULE

LCP	DESCRIPTION	QUANTITY	FURNISHED BY	INSTALLED BY	MANUFACTURER	MODEL	REMARKS
\$	8 LIGHT LIGHTING CONTROL PANEL	1	TLS	GC	ACILITY	ARP INTERCOM NLT 8FCR INVOLT 18X18 FT DTC CPLET	8 RELAY PANEL FOR DIMMING CONTROL WITH FLUSH MOUNT ENCLOSURE AND DIGITAL TIME CLOCK
\$	WALL MOUNTED OVERRIDE SWITCH	1	TLS	GC	ACILITY	#PDDMA 4P	SEE LIGHTING CONTROL DIAGRAM FOR SWITCH CONFIGURATION
\$	WALL MOUNTED DIMMER SWITCH	2	TLS	GC	COOPER	SALDOP-W	SLIDE DIMMER COMPATIBLE WITH UP TO 300W LED LIGHTING. SET AT 50%. IF DINING ROOM LIGHTS FLICKER AT THIS DIMMER SETTING THEN GC SHALL PROVIDE LUTRON EVQS-250P DIMMER AS REPLACEMENT.
\$	WALL MOUNTED LINE VOLTAGE OCCUPANCY SENSOR	3	TLS	GC	HUBBELL	LIMITS 1-N-WH	WHITE DUAL TECHNOLOGY SINGLE RELAY WITH 1 BUTTON AND NEUTRAL WIRING

LIGHTING FIXTURE SCHEDULE

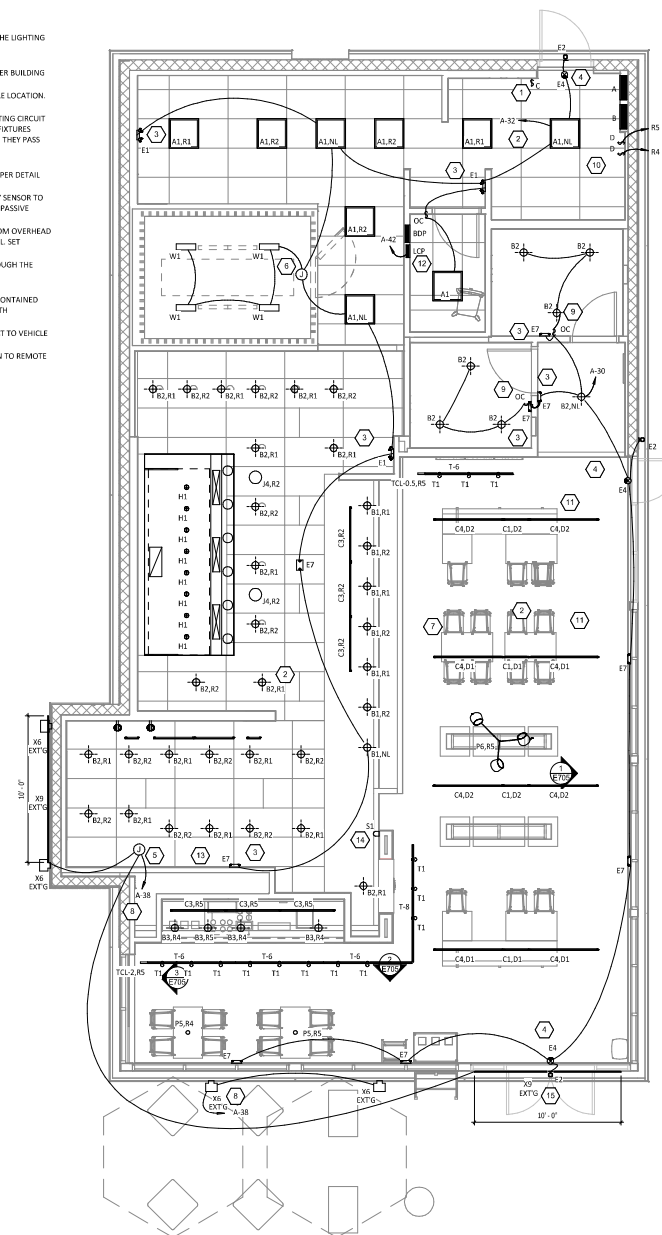
TAG	COUNT	DESCRIPTION	MOUNTING	VOLTAGE	WATTS	FURNISHED BY	INSTALLED BY	MANUFACTURER	MODEL	LAMP	REMARKS
A1	9	2x2 LED LENSED TROFFER	LAY-IN	120V	30W	TLS	GC	NOKA LIGHTING	NF08L-E2243L 3W	INTEGRAL 3000K LED	COMPATIBLE WITH 0-10V DIMMING, FACTORY LOCKED TO 300K
B1	7	RECESSED 6IN CAN LIGHT	CEILING	120V	17W	TLS	GC	NOKA LIGHTING	NHC-6624ATL W/ NIM 57W/M15 TRIM	INTEGRAL 3000K LED	(L1) 17W ECOSTRY ECD-PAR38C-17-GU24-27 (K-32) LED (125-2700K) W/ GU 24 BASE
B2	33	RECESSED 6IN CAN LIGHT W/ LED TRIM	CEILING	120V	17W	TLS	GC	NOKA LIGHTING	NHC-6624ATL WITH MLRC 95-300W LED TRIM	INTEGRAL 3000K LED	LED TRIM FURNISHED WITH GU24 SOCKET ADAPTER
B3	4	RECESSED 6IN CAN LIGHT W/ BLACK LED TRIM	CEILING	120V	12W	TLS	GC	NOKA LIGHTING	NHC-6624ATL WITH MLRC-35-1278B LED TRIM	INTEGRAL 3000K LED	BLACK LED TRIM FURNISHED WITH GU24 SOCKET ADAPTER
C0	2	LOW PROFILE LED - 1 FT	SURFACE	120V	5W	TLS	GC	HERA LIGHTING	EL/LED1/2/W/W	INTEGRAL 3000K LED	FURNISHED WITH COVERS, CONNECTORS, AND ONE HARDWARE BOX OR CORD/PLUG PER SECTION
C1	4	LOW PROFILE LED - 2 FT	SURFACE	120V	9W	TLS	GC	HERA LIGHTING	EL/LED/22/W/W	INTEGRAL 3000K LED	FURNISHED WITH COVERS, CONNECTORS, AND ONE HARDWARE BOX OR CORD/PLUG PER SECTION
C2	2	LOW PROFILE LED - 3 FT	SURFACE	120V	12W	TLS	GC	HERA LIGHTING	EL/LED/34/W/W	INTEGRAL 3000K LED	FURNISHED WITH COVERS, CONNECTORS, AND ONE HARDWARE BOX OR CORD/PLUG PER SECTION
C3	6	LOW PROFILE LED - 4 FT	SURFACE	120V	15W	TLS	GC	HERA LIGHTING	EL/LED/46/W/W	INTEGRAL 3000K LED	FURNISHED WITH COVERS, CONNECTORS, AND ONE HARDWARE BOX OR CORD/PLUG PER SECTION
C4	8	LOW PROFILE LED - 5 FT	SURFACE	120V	18W	TLS	GC	HERA LIGHTING	EL/LED/59/W/W	INTEGRAL 3000K LED	FURNISHED WITH COVERS, CONNECTORS, AND ONE HARDWARE BOX OR CORD/PLUG PER SECTION
E1	3	EMERGENCY LIGHT - DUAL HEAD	VARIOUS	120V	2W	TLS	GC	EXITRONIX	LED-R0	INTEGRAL LED	90 MINUTE BATTERY BACKUP
E2	3	EXTERIOR REMOTE EMERGENCY LIGHT	VARIOUS	4V	1W	TLS	GC	EXITRONIX	MLED-B-WP	INTEGRAL LED	LOW VOLTAGE REMOTE EMERGENCY LIGHT POWERED BY REMOTE CAPABLE EXT 100W WITH INDICATING PLATE
E4	3	WHITE EXIT SIGN WITH EMERGENCY LIGHT STANDARD RED LETTERS	VARIOUS	120V	2W	TLS	GC	EXITRONIX	CLED-4-WH	INTEGRAL LED	90 MINUTE BATTERY BACKUP WITH INTEGRAL EMERGENCY LIGHT, REMOTE HEAD CAPABLE
E7	9	EMERGENCY LIGHT	VARIOUS	120V	2W	TLS	GC	EXITRONIX	EV2	INTEGRAL LED	90 MINUTE BATTERY BACKUP
H1	6	VAPOR PROOF HOOD LIGHT	SURFACE	120V	15W	HS/TLS	HS	FURNISHED W/ HOOD	FURNISHED W/ HOOD	INTEGRAL LED	(L1) TCCP L16A19N1527K GREEN CREATIVE 94X100X100/160/168
J4	2	DECORATIVE PENDANT	PENDANT	120V	9W	TLS	GC	BARNLIGHT	BLE-C-88N-100-ASH-58 6-100-84-GU24	INTEGRAL LED	WITH BLACK LAMP SHADE, BLACK CORD, AND OAK LAMP HOLDER
J5	2	PENDANT	PENDANT	120V	5W	TLS	GC	H-LITE MFG	HLC-91/CB12-91/20W 1BL	INTEGRAL LED	ADJUST CORD LENGTH FOR MOUNTING HEIGHT CALLED FOR IN ARCHITECTURAL DRAWINGS
P6	1	DECORATIVE DINING ROOM PENDANT	PENDANT	120V	30W	TLS	GC	BARNLIGHT	BLE-C-61-133-35630-3	INTEGRAL LED	HARDWIRED SET OF 181 HEADS WITH UNIVERSAL CANOPY AND STANDARD BLACK CABLES
S1	1	DRIVE-UP PICK-UP WINDOW CHIME/STROBE	WALL	16V	0W	TLS	GC	FEDERAL SIGNAL	SIMS6008 W/ SIM5W-012-024	INTEGRAL	SET SWITCH A TO "CHIME 1 SINGLE" (10111) AND SWITCH B TO "CHIME 2 SINGLE" (00111)
T1	14	TRACK HEAD	TRACK	120V	10W	TLS	GC	JUNO	#606L 30K 300K 0304 WFL BL	INTEGRAL LED	BLACK COUNTER TRACK HEAD W/ UNIVERSAL 120V TRAC ADAPTER AND WIDE FLOOD BEAM
T-6	4	TRACK (6 FT)	SURFACE	120V	0W	TLS	GC	JUNO	T 6FT BL	N/A	SINGLE CIRCUIT, BLACK FINISH. FURNISH WITH CONNECTORS TO ACHIEVE ARRANGEMENT SHOWN ON PLANS. TRIM AS REQUIRED FOR LENGTHS SHOWN.
T-8	5	TRACK (8 FT)	SURFACE	120V	0W	TLS	GC	JUNO	T 8FT BL	N/A	SINGLE CIRCUIT, BLACK FINISH. FURNISH WITH CONNECTORS TO ACHIEVE ARRANGEMENT SHOWN ON PLANS. TRIM AS REQUIRED FOR LENGTHS SHOWN.
TCL-0.5	1	TRACK CURRENT LIMITER (60W)	SURFACE	120V	0W	TLS	GC	JUNO	TCLFM11 BL W/ TCLCB 054 BLCK	N/A	BLACK CURRENT LIMITING END FEED WITH CIRCUIT BREAKER
TCL-2	1	TRACK CURRENT LIMITER (240W)	SURFACE	120V	0W	TLS	GC	JUNO	TCLFM11 BL W/ TCLCB 2A BLCK	N/A	BLACK CURRENT LIMITING END FEED WITH CIRCUIT BREAKER
W1	4	WIC LED LIGHT	SURFACE	120V	29W	WCS	GC	FURNISHED W/ WIC	FURNISHED W/ WIC	INTEGRAL LED	WET-RATED COOLER FIXTURE
X6	4	EXTERIOR FLOOD LIGHT	WALL	120V	10W	EXT'G	EXT'G	RAB LIGHTING	WPLD1017	INTEGRAL LED	PROVIDE WITH WALL MOUNT KIT
X9	2	EXTERIOR LED CHANNEL LIGHT	SURFACE	120V	45W	EXT'G	EXT'G	PARADIGM LED	ANC-2415-S-W/ OVAL LENS AND END CAPS	FLOOR-40-30-67-24	FURNISHED BY REMOTE MOUNTED REMA 3K LED DRIVER. SEE PLAN FOR LENGTHS.

LIGHTING FIXTURE SCHEDULE NOTES

A. SEE THE ARCHITECTURAL REFLECTED CEILING PLAN FOR EXACT LIGHT LOCATIONS.
B. SEE THE ARCHITECTURAL LIGHTING DETAILS FOR FIXTURE CONSTRUCTION DETAILS.

ELECTRICAL LIGHTING PLAN NOTES

- INSTALL WALL MOUNTED LIGHTING OVERRIDE SWITCH AND CONNECT TO LCP AS SHOWN IN DETAIL 67E710
- FOR UNINCULCATED LIGHT FIXTURES, CONNECT TO RELAY CIRCUIT INDICATED NEXT TO THE FIXTURE TAG THROUGH THE LIGHTING CONTROL PANEL (LCP) UNLESS NOTED OTHERWISE.
- WALL MOUNT THE EMERGENCY LIGHT FIXTURE AT 6" BELOW THE CEILING UNLESS NOTED OTHERWISE.
- VERIFY MOUNTING HEIGHT OF EXIT SIGN PRIOR TO ROUGH-IN. EXIT SIGN MUST BE VISIBLE FROM AREA SERVED AFTER BUILDING SYSTEMS HAVE BEEN INSTALLED. SEE ARCHITECTURAL ELEVATIONS FOR FURTHER INFORMATION.
- INSTALL LED DRIVERS FURNISHED WITH THE X9 LED STRIP LIGHTS ON WALL 8" ABOVE THE CEILING IN AN ACCESSIBLE LOCATION. PROVIDE LOW VOLTAGE WIRING FROM LED DRIVER TO THE X9 LIGHT FIXTURES AS SHOWN.
- INSTALL LIGHT FIXTURES FURNISHED WITH THE WALK-IN COOLER. PROVIDE UNSWITCHED CONDUCTOR FROM LIGHTING CIRCUIT TO WALK-IN COOLER LIGHTING J-BOX AND FROM J-BOX TO LIGHT FIXTURES AS SHOWN. CONDUIT BETWEEN LIGHT FIXTURES SHALL BE ROUTED ON THE INTERIOR OF THE WALK-IN COOLER. SEAL INTERIOR AND EXTERIOR OF CONDUITS WHERE THEY PASS THROUGH THE WALK-IN COOLER ENVELOPE PER THE NEC.
- PROVIDE UNISTRUT AS SHOWN ON THE ARCHITECTURAL RCP PER THE ARCHITECTURAL UNISTRUT DETAIL, TYPICAL.
- CONNECT EXTERIOR LIGHTING CIRCUIT TO CIRCUIT SHOWN THROUGH THE EXTERIOR LIGHTING CONTACTOR PANEL PER DETAIL 67E710.
- INSTALL WALL-MOUNTED OCCUPANCY SENSOR FURNISHED BY LIGHTING SUPPLIER AT 42" AFF. ADJUST OCCUPANCY SENSOR TO PROVIDE AUTOMATIC ON/AUTOMATIC OFF OPERATION WITH A FIXED TIMER OF 30 MINUTES AND WITH BOTH THE PASSIVE INFRARED AND ULTRASONIC SENSORS ENABLED.
- INSTALL WALL-MOUNTED DIMMERS ABOVE PANELBOARDS 6" ABOVE LAY-IN CEILING FOR CONTROL OF DINING ROOM OVERHEAD STRIP LED AND PENDANT LIGHTS. CONNECT DIMMERS TO RELAYS SHOWN THROUGH THE LIGHTING CONTROL PANEL. SET DIMMERS AT 50%.
- CONNECT DINING ROOM (RELAY CIRCUITS #4 AND #5) OVERHEAD STRIP LED LIGHTS TO THE RELAY INDICATED THROUGH THE CORRESPONDING WALL-MOUNTED DIMMER INSTALLED ABOVE THE PANELBOARDS.
- INSTALL LIGHTING CONTROL SYSTEM PER DETAIL 67E710.
- PENETRATIONS THROUGH SHEAR WALL SHALL BE LIMITED TO 3" DIAMETER (OR A GROUP OF PENETRATIONS ALL CONTAINED WITHIN 10" DIAMETER). IF GROUP PENETRATIONS OR GROUPS OF PENETRATIONS ARE REQUIRED COORDINATE WITH STRUCTURAL ENGINEER FOR APPROPRIATE BRACING. SEE STRUCTURAL DRAWINGS FOR SHEAR WALL LOCATION.
- INSTALL CHIME/STROBE FURNISHED WITH VEHICLE DETECTION SYSTEM ON WALL 12" BELOW CEILING AND CONNECT TO VEHICLE DETECTION SYSTEM PER MANUFACTURER'S INSTALLATION INSTRUCTIONS.
- INSTALL E2 REMOTE EMERGENCY LIGHT TO BOTTOM OF CANOPY. CONCEAL LOW VOLTAGE WIRING FROM EXT SIGN TO REMOTE EMERGENCY LIGHT.



1 LIGHTING FLOOR PLAN
1/4" = 1'-0"

NATIONAL
4635 Trueman Blvd, Suite 250
Hilliard, Ohio 43026
Phone: (614) 751-9610
Fax: (614) 552-5240
Contact: Andy Jansoski
(614) 328-2028
ajansoski@nationalengineering.com

FOR CONSTRUCTION

CHIPOTLE MEXICAN GRILL, INC.
1491 EMERSON DR. NE
PALM BAY, FL 32907

STORE NO.: 5338
PALM BAY
1491 EMERSON DR. NE
PALM BAY, FL 32907

Issue/Revised:
09/09/2024 PERMIT SET
10/23/2024 BID SET
01/28/2025 CONSTRUCTION SET
Revisions:
Drawn: []
Checked: []
AJJ: []
Project No.: 2401013

ELECTRICAL LIGHTING PLAN

E100

