

Report By:

National TAB
1329 E. KEMPER ROAD
SUITE 4210
CINCINNATI, OH 45246



Report: TAB Report
Function: Test, Adjust, & Balance
Date: 01/20/2026
Completed By: National TAB

PROJECT

03-16-26 WAWA #7222 SILVERTON, OH

7481 MONTGOMERY RD

SILVERTON, OH 45236

Client

Wawa
260 West Baltimore Pike
Wawa, PA 19063

National TAB

Project: 03-16-26 WAWA #7222 SILVERTON, OH

Table Of Contents

Section	Page #
Summary	3
Remarks	4
Balance Schedule	9
Checklists	10
AHU/RTU	21
FAN - Exhaust	30
GRD Layout	37



National TAB

Project: 03-16-26 WAWA #7222 SILVERTON, OH
Function: Test, Adjust, & Balance

Project Summary

Project Summary

The summary below provides a quick understanding of our scope of work and general testing procedures. Enclosed in the report is further detail about your building performance including recommendations, asset data, and pictures. Our focus is to work with the trades to remedy any issues or deficiencies during the actual field balancing and not after the balancing has occurred to achieve a positive environment and outcome. The level of success is determined by the availability of the trades, possible parts needed, or time constraints.

RTU's (Roof Top Units) w/ Diffusers

Each of the RTU's were measured at their terminal devices or via traverse to establish a total flow for that unit. Each RTU was adjusted to within tolerance of the engineer's design flow. Each outlet was then adjusted to within tolerance of the design flow. Outside air was measured by reading the intake air opening with a velocity grid and multiplying by the free area. The outside air damper was adjusted until the airflow was within the design requirements. Any equipment that fell outside of that tolerance is noted throughout the report.

General Exhaust Fans w/ Grilles

The general exhaust fans were measured by reading each air device with a flow hood. The total airflow for each fan is equivalent to the sum of these readings. Fan speed was then adjusted so that the airflow was within tolerance of design. Each terminal device was balanced to within tolerance of the design volume using the installed volume dampers. Any equipment that fell outside of this tolerance is noted throughout the report.

Ceiling Exhaust Fans

The ceiling exhaust fans were measured using a flow hood. If speed adjustment was provided, the fan speed was adjusted to within design tolerance. Any equipment that fell outside of this tolerance is noted throughout the report.

Final Building Tests

After completing the test and balance the final building pressure was measured. It was confirmed that the building pressure fell within acceptable tolerances and that the pressure measurement coincides with the actual and design net airflow. Any deviations from these standards are noted throughout the report

Issue List

- EF-1 face dampers not installed
- RTU temp sensor wiring not landed
- RTU-2 return grilles not balanced
- RTU's 2&3 cooling and dehumidification modes not functioning



03-16-26 WAWA #7222 SILVERTON, OH

Project Issue Information

Issue Name : EF-1 face dampers not installed
Description : The restroom exhaust diffusers are supposed to have face dampers installed for balancing but they are missing. This will prevent the completion of correctly balancing the diffusers.
Created By : National TAB **Assigned To :** National TAB - Will Turnbough
Status : Open
Priority : High **Asset Tag :**
Originated Date : 03/18/2026 - Corey Dick - National TAB

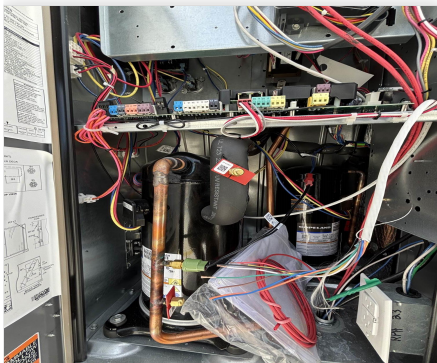


03-16-26 WAWA #7222 SILVERTON, OH

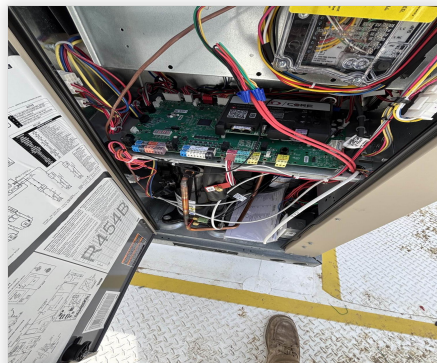
Project Issue Information

Issue Name : RTU temp sensor wiring not landed
Description : The wiring for the temp sensors is not landed at any of the RTU's. The unit has no temp being relayed to it and this makes it so that no cooling or heating will be called for.
Created By : National TAB **Assigned To :** National TAB - Will Turnbough
Status : Open
Priority : Urgent **Asset Tag :**
Originated Date : 03/19/2026 - Corey Dick - National TAB

Project Issue File Details



03/19/2026



03/19/2026

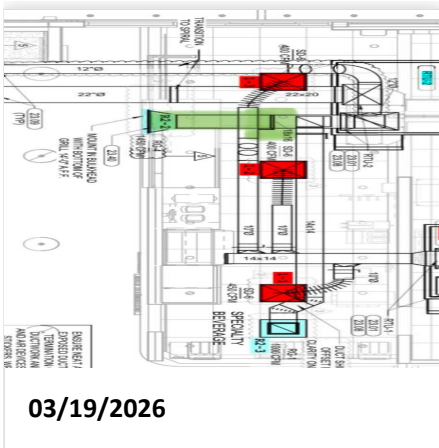


03-16-26 WAWA #7222 SILVERTON, OH

Project Issue Information

Issue Name : RTU-2 return grilles not balanced
Description : The return grilles for RTU-2 were unable to be balanced due to no damper being installed on diffuser 2 (highlighted).
Created By : National TAB **Assigned To :** National TAB - Will Turnbough
Status : Open
Priority : Low **Asset Tag :**
Originated Date : 03/19/2026 - Corey Dick - National TAB

Project Issue File Details





03-16-26 WAWA #7222 SILVERTON, OH

Project Issue Information

Issue Name : RTU's 2&3 cooling and dehumidification modes not functioning
Description : Lennox was at site fixing a refrigerant leak for each unit and left the compressors unplugged. At the moment it is not clear whether the problem was fixed. Test mode was used to determine if cooling and dehumidification were functional on these units with the compressors plugged in and they failed for both units after a short period of time.

Created By : National TAB **Assigned To :** National TAB - Will Turnbough

Status : Open

Priority : High **Asset Tag :**

Originated Date : 03/19/2026 - Corey Dick - National TAB

AIR BALANCE SCHEDULE

UNIT	AREA SERVED	HVAC SUPPLY		HVAC RETURN		HVAC OUTDOOR		OA %		HOOD MAKE-UP		HOOD EXHAUST		GENERAL EXH.	
		DESIGN	ACTUAL	DESIGN	ACTUAL	DESIGN	ACTUAL	DESIGN	ACTUAL	DESIGN	ACTUAL	DESIGN	ACTUAL	DESIGN	ACTUAL
RTU-1	FOOD SERVICE	4500	4574	3775	3828	725	746	16.1%	16.3%						
RTU-2	SALES/OFFICE	3400	3510	2800	2880	600	630	17.6%	17.9%						
RTU-3	SALES/RR	2400	2450	1850	1882	550	568	22.9%	23.2%						
EF-1	RESTROOM													375	390
EF-2	BOH													1000	1023
EF-3	TRASH													200	202
TOTALS		10300	10534	8425	8590	1875	1944			0	0	0	0	1575	1615

NET BUILDING AIRFLOW CALCULATION

TOTALS	DESIGN	ACTUAL
TOTAL OA	1875	1944
TOTAL EXHAUST	1575	1615
NET AIRFLOW	300	329

DOOR TESTED	BUILDING PRESSURE MEASUREMENTS (IN. H2O)
FRONT	0.0023
SIDE	0.0019
REAR	0.0024
AVERAGE	0.0022

FINAL CHECKS

- ACTUAL NET AIRFLOW COINCIDES WITH DESIGN: ✓

- MEASURED PRESSURES COINCIDES WITH ACTUAL NET AIRFLOW: ✓

- PRESSURE FALLS WITHIN IMC TOLERANCE OF +/-0.02" W.C. ✓

NOTES:

CheckList List

- 01: RTU's/AHU's
- 02: LENNOX SETUP PARAMETERS
- 03: SENSOR WIRING (LENNOX)
- 04: EF'S
- 05: CLOSEOUT CHECKS



03-16-26 WAWA #7222 SILVERTON, OH

CheckList Information

Name : 01: RTU's/AHU's **Status :** Not Completed
Assigned Organization : National TAB **Asset :**
Requesting Organization : National TAB
Created Date : 01/20/2026 - Trinity Dodds - National TAB

CheckList Item Details

RTU's/AHU's

All diffusers and grilles are installed and match design?	Pass
---	------

Comment:

Clean filters installed?	Pass
--------------------------	------

Comment:

Economizers are assembled and functional?	Pass
---	------

Comment:

Motors are all operating below the FLA rating?	Pass
--	------

Comment:

Are belts tight?	N/A
------------------	-----

Comment:

If direct drive unit is the speed controller working?	Pass
---	------

Comment:

Is gas piping installed and valves turned on?	Pass
---	------

Comment:

Condensate drains are installed?

Pass

Comment:

Unit free of noticeable noise and vibration

Pass

Comment:

Final outside air damper position is marked with permanent marker?

Pass

Comment:

No alarms present?

Fail

Comment:

Zone sensor alarms on all units due to wires not being landed for temp sensors

Any noticeable duct leakage?

Pass

Comment:

Total supply and OA flows are balanced within +/-5% and supply & return diffusers within +/-10%?

Pass

Comment:

Adjust side wall diffusers on spiral duct that blow towards the coffee island drop-in to prevent issues with it staying at temperature. Fan out of the deflector blades or reduce airflow as necessary to prevent drafting.

Pass

Comment:

IN TEST MODE, TEST THE FOLLOWING:

Cooling mode is operational? Record EAT/LAT for each unit:

Fail

Comment:

RTU-1: EAT(69) LAT(43) RTU-2: EAT(64) LAT(65) Compressors shut off after short time RTU-3: EAT(66) LAT(65) Compressors shut off after short time

Heating mode is operational? Record EAT/LAT for each unit:

Pass

Comment:

RTU-1: EAT(70) LAT(82) RTU-2: EAT(65) LAT(82) RTU-3: EAT() LAT()

Dehumidification mode is operational? (Feel dehumidification coil with your hand. Is it hot?) Record EAT/LAT for each unit:

Fail

Comment:

RTU-1: EAT(72) LAT(60) RTU-2: EAT(67) LAT(72) RTU-3: EAT(65) LAT(72)



03-16-26 WAWA #7222 SILVERTON, OH

CheckList Information

Name : 02: LENNOX SETUP PARAMETERS **Status :** Not Completed
Assigned Organization : National TAB **Asset :**
Requesting Organization : National TAB
Created Date : 02/18/2026 - Trinity Dodds - National TAB

CheckList Item Details

UNIT ID CONFIGURATIONS

BACNET CONFIGURATION: GO TO SETTINGS>GENERAL>CONFIGURATION ID1 POSITION 5 SET TO "N". Pass

Comment:

NETWORK CONFIGURATION: GO TO SETUP>NETWORK INTEGRATION, SET TO BACNET IP Pass

Comment:

CONTROL MODE: SET CONTROL MODE TO ROOM SENSOR: CO2, TEMP & HUMIDITY (PER UNIT, AS NEEDED). Pass

Comment:

INDIVIDUAL PARAMETER CONFIGURATIONS (MECHANICAL CONTRACTOR TO DEFINE / AS APPLICABLE):

PARAMETER 105 DEHUMID MODE: 7 NO CONDITIONS Pass

Comment:

PARAMETER 106 DEHUMID SETPOINT: 50, THIS IS A CENTERED SET POINT (+/-) Yes

Comment:

PARAMETER 107 DEHUMID DEADBAND: 3 (DEFAULT) THIS IS THE ACTUAL +/- VALUE Pass

Comment:

PARAMETER 117 CO2 DAMPER MAX OPEN: 50%

Pass

Comment:

PARAMETER 118 CO2 START OPEN PPM: 1200

Pass

Comment:

PARAMETER 119 CO2 MAX OPEN PPM: 1500

Pass

Comment:

PARAMETER 137 OCCHET SET POINT: 68 (BACK UP)

Pass

Comment:

PARAMETER 131 SET TO 100%

Pass

Comment:

PARAMETER 139 OCC COOLING SET POINT: 72 (BACK UP)

Pass

Comment:

PARAMETER 154 OCC BLOWER MODE: ON-CONTINUOUS 1

Pass

Comment:

CFM VALUES / MSAV FAN SPEEDS (AIR BALANCER TO DEFINE / IF APPLICABLE):

OA DAMPER SET TO SAME POSITION IN ALL FAN SPEEDS?

Pass

Comment:

ALL FAN SPEEDS SET TO THE SAME CFM VALUE (ENTER SETPOINTS BELOW)

Pass

Comment:

RTU-1: 81% RTU-2: 70% RTU-3: 92%

HEAT CFM VALUE: PER THE HVAC SCHEDULE

Pass

Comment:

HIGH COOL CFM VALUE: THE HIGH COOL CFM VALUE

Pass

Comment:

LOW COOL CFM VALUE: MATCH THE HIGH COOL CFM VALUE

Pass

Comment:

VENTILATION CFM VALUE: MATCH THE HIGH COOL CFM VALUE

Pass

Comment:

SET THE POWER EXHAUST ON SETPOINT TO 20% HIGHER THAN THE MINIMUM DAMPER POSITION.

Pass

Comment:



03-16-26 WAWA #7222 SILVERTON, OH

CheckList Information

Name : 03: SENSOR WIRING (LENNOX) **Status :** Not Completed
Assigned Organization : National TAB **Asset :**
Requesting Organization : National TAB
Created Date : 01/20/2026 - Trinity Dodds - National TAB

CheckList Item Details

COMBINATION TEMPERATURE/HUMIDITY SENSOR

Sensors are installed where shown on the drawing? Pass

Comment:

2 conductor shielded cable has one wire landed to Vin, one to GND, and the shield wire is not connected. Fail

Comment:

For second shielded cable, one wire is landed to Vout and the shield wire is not connected. Fail

Comment:

Verify that the CORE or Prodigy controller is sensing a relative humidity (record the reading) Fail

Comment:

No temps shown because wires are not landed at the unit



03-16-26 WAWA #7222 SILVERTON, OH

CheckList Information

Name : 04: EF'S **Status :** Not Completed

Assigned Organization : National TAB **Asset :**

Requesting Organization : National TAB

Created Date : 01/20/2026 - Trinity Dodds - National TAB

CheckList Item Details

EF's

Rotation is correct?	Pass
-----------------------------	------

Comment:

Belts are tight (if applicable)?	N/A
---	-----

Comment:

Speed controller installed and functional (if applicable)?	Pass
---	------

Comment:

There is no major leakage around base of fan?	Pass
--	------

Comment:

Is the motor operating below the motor FLA rating?	Pass
---	------

Comment:

Back draft damper installed and can it fully open?	Pass
---	------

Comment:

Unit free of noticeable noise and vibration?	Pass
---	------

Comment:

Total exhaust flow balanced within +/-5% and grilles are within +/-10%?

Fail

Comment:

No face dampers installed for restroom exhaust EF-1



03-16-26 WAWA #7222 SILVERTON, OH

CheckList Information

Name : 05: CLOSEOUT CHECKS **Status :** Not Completed
Assigned Organization : National TAB **Asset :**
Requesting Organization : National TAB
Created Date : 01/20/2026 - Trinity Dodds - National TAB

CheckList Item Details

SPACE COMFORT

Is space free of drafting? Pass

Comment:

Is space comfortable in all areas? Pass

Comment:

Is the space free of ventilation noise? Pass

Comment:

BUILDING PRESSURE

Do actual net building airflow, design net building airflow, and pressure coincide? If not why? (All three should either be positive or negative) Pass

Comment:

National TAB

Project: 03-16-26 WAWA #7222 SILVERTON, OH

System/Unit: AHU/RTU



Asset: RTU-1

AREA:FOOD SERVICE/BOH

Unit Data		
	Design	Actual
MFG	LENNOX	LENNOX
Serial Num	-	5625G00753
Model Num	LGT150H5E	LGT150H5E
Type	RTU	RTU
Configuration	VERTICAL	VERTICAL
Num OA Filters 1	-	2
OA Filter Size 1	-	14"x23"
Num Final Filter 1	-	4
Final Filter Size 1	-	20"x25"x2"

Motor Data		
	Design	Actual
Horsepower	3.75	3.8
Phase	3	3
Rated Voltage	208	208

Test Data		
	Design	Actual
SF CFM	4500	4574
RA CFM	3775	3828
OA CFM	725	746
RL Voltage	-	211/212/210
RL Amperage	-	4.7/4.8/4.7
SF System SetPt	-	81%
RA Damper Position	-	74%
RA Damper Type	-	ECONOMIZER
OA Damper Position	-	26%
OA Damper Type	-	ECONOMIZER

Performance Data		
	Design	Actual
MA Plenum SP	-	-0.61"
Fan Suction SP	-	-0.88"
Fan Discharge SP	-	0.70"
Total ESP	0.70"	1.31"
Fan Total SP	-	1.58"

Completed By: Corey Dick on 03/19/2026

Unit Data - PHOTO LOG



03/19/2026



03/19/2026

National TAB

Project:03-16-26 WAWA #7222 SILVERTON, OH

AHU/RTU



Diffuser Supply (GRD)

RTU-1/FOOD SERVICE/BOH

Asset									
Asset Name	Location	Type	Size	DESIGN CFM	AK	CFM(1)	CFM(2)	FINAL CFM	% to design
SGRD1	SPECIALTY BEVERAGE	SD-6	10"	450	1	588	481	460	102.2
SGRD2	SPECIALTY BEVERAGE	SD-6	10"	400	1	257	349	391	97.8
SGRD3	SPECIALTY BEVERAGE	SD-6	10"	400	1	500	488	422	105.5
SGRD4	BOH	SD-6	10"	450	1	362	394	469	104.2
SGRD5	BOH	SD-6	12"	500	1	481	601	506	101.2
SGRD6	BOH	SD-6	12"	500	1	349	420	450	90.0
SGRD7	FOOD SERVICE	SD-6	12"	600	1	736	603	655	109.2
SGRD8	FOOD SERVICE	SD-6	10"	350	1	418	409	349	99.7
SGRD9	WASHROOM	SD-6	10"	400	1	514	436	402	100.5
SGRD10	TRASH STAGING	SD-6	8"	200	1	218	298	200	100.0
SGRD11	ELECTRICAL	SD-6	10"	250	1	428	245	270	108.0
Total				4500		4851	4724	4574	101.64%

Diffuser Ret/Exh (GRD)

RTU-1/FOOD SERVICE/BOH

Asset									
Asset Name	Location	Type	Size	DESIGN CFM	AK	CFM(1)	CFM(2)	FINAL CFM	% to design
EGRD1	FOOD SERVICE	RG-1	14X14	955	1.20	903	929	929	97.3
EGRD2	FOOD SERVICE	RG-1	14X14	955	1.20	905	935	935	97.9
EGRD3	FOOD SERVICE	RG-1	14X12	755	1.20	896	792	792	104.9
EGRD4	FOOD SERVICE	RG-2	12X10	455	1.20	540	469	469	103.1
EGRD5	WASHROOM	RG-1	14X12	655	1.20	584	703	703	107.3
Total				3775		3828	3828	3828	101.4%

National TAB

Project: 03-16-26 WAWA #7222 SILVERTON, OH

System/Unit: AHU/RTU



Asset: RTU-2

AREA:SALES/OFFICE

Unit Data		
	Design	Actual
MFG	LENNOX	LENNOX
Serial Num	-	5625G00865
Model Num	LGT102H5E	LGT102H5E
Type	RTU	RTU
Configuration	VERTICAL	VERTICAL
Num OA Filters 1	-	2
OA Filter Size 1	-	14"x23"
Num Final Filter 1	-	4
Final Filter Size 1	-	20"x25"x2"

Motor Data		
	Design	Actual
Horsepower	3.75	3.8
Phase	3	3
Rated Voltage	208	208
Rated Amperage	-	8

Test Data		
	Design	Actual
SF CFM	3400	3510
RA CFM	2800	2875
OA CFM	600	630
RL Voltage	-	211/211/212
RL Amperage	-	3.2/3.3/3.3
SF System SetPt	-	70%
RA Damper Position	-	88%
RA Damper Type	-	MECHANICALLY LINKED
OA Damper Position	-	12%
OA Damper Type	-	ECONOMIZER

Performance Data		
	Design	Actual
MA Plenum SP	-	-0.42"
Fan Suction SP	-	0.60"
Fan Discharge SP	-	0.71"
Total ESP	0.50"	1.13"
Fan Total SP	-	1.31"

Completed By: Corey Dick on 03/19/2026

Notes:

Return diffusers not able to be balanced due to missing damper on diffuser 2

Written By: Corey Dick on 03/19/2026

Unit Data - PHOTO LOG



03/19/2026



03/19/2026

National TAB

Project:03-16-26 WAWA #7222 SILVERTON, OH

AHU/RTU



Diffuser Supply (GRD)

RTU-2/SALES/OFFICE

Asset									
Asset Name	Location	Type	Size	DESIGN CFM	AK	CFM(1)	CFM(2)	FINAL CFM	% to design
SGRD1	SALES	SD-2	12"	350	0.33	397	339	361	103.1
SGRD2	SALES	SD-2	12"	325	0.33	436	328	338	104.0
SGRD3	SALES	SD-2	16"	350	0.33	417	376	367	104.9
SGRD4	SALES	SD-2	16"	325	0.33	413	318	336	103.4
SGRD5	SALES	SD-2	16"	350	0.33	421	364	371	106.0
SGRD6	OFFICE	SD-1	8"	250	1	369	316	261	104.4
SGRD7	FRONT VEST	SD-5	8"	250	1	254	220	227	90.8
SGRD8	SALES	SD-2	16"	400	0.33	460	421	418	104.5
SGRD9	SALES	SD-2	14"	400	0.33	443	387	409	102.3
SGRD10	SALES	SD-2	14"	400	0.33	428	418	422	105.5
Total				3400		4038	3487	3510	103.24%

Diffuser Ret/Exh (GRD)

RTU-2/SALES/OFFICE

Asset									
Asset Name	Location	Type	Size	DESIGN CFM	AK	CFM(1)	CFM(2)	FINAL CFM	% to design
EGRD1	SALES	RG-5	12"	450	0.78	472	472	472	104.9
EGRD2	SALES	RG-4	18X16	1400	1	1914	1914	1914	136.7
EGRD3	SPECIALTY BEVERAGE	RG-1	14X14	950	1	489	489	489	51.5
Total				2800		2875	2875	2875	102.68%

National TAB

Project: 03-16-26 WAWA #7222 SILVERTON, OH

System/Unit: AHU/RTU



Asset: RTU-3

AREA:SALES/RESTROOMS

Unit Data		
	Design	Actual
MFG	LENNOX	LENNOX
Serial Num	-	5625G00820
Model Num	LGT072H5E	LGT072H5E
Type	RTU	RTU
Configuration	VERTICAL	VERTICAL
Num OA Filters 1	-	2
OA Filter Size 1	-	14"x14"
Num Final Filter 1	-	4
Final Filter Size 1	-	20"x20"x2"

Motor Data		
	Design	Actual
Horsepower	1.5	1.5
Phase	3	3
Rated Voltage	208	208
Rated Amperage	-	4.4

Test Data		
	Design	Actual
SF CFM	2400	2450
RA CFM	1850	1882
OA CFM	550	568
RL Voltage	-	210/209/211
RL Amperage	-	3.5/3.4/3.5
SF System SetPt	-	92%
RA Damper Position	-	67%
RA Damper Type	-	MECHANICALLY LINKED
OA Damper Position	-	33%
OA Damper Type	-	ECONOMIZER

Performance Data		
	Design	Actual
MA Plenum SP	-	-0.35"
Fan Suction SP	-	-0.51"
Fan Discharge SP	-	0.40"
Total ESP	0.50"	0.75"
Fan Total SP	-	0.91"

Completed By: Corey Dick on 03/19/2026

Unit Data - PHOTO LOG



03/19/2026



03/19/2026

National TAB

Project:03-16-26 WAWA #7222 SILVERTON, OH

AHU/RTU



Diffuser Supply (GRD)

RTU-3/SALES/RESTROOMS

Asset									
Asset Name	Location	Type	Size	DESIGN CFM	AK	CFM(1)	CFM(2)	FINAL CFM	% to design
SGRD1	SALES	SD-2	16"	300	0.33	265	330	320	106.7
SGRD2	SALES	SD-2	16"	150	0.33	134	164	144	96.0
SGRD3	SALES	SD-2	16"	400	0.33	341	418	429	107.3
SGRD4	SALES	SD-2	16"	150	0.33	120	156	146	97.3
SGRD5	SALES	SD-2	16"	400	0.33	339	411	420	105.0
SGRD6	ASSOCIATE AREA	SD-6	8"	200	1	193	211	215	107.5
SGRD7	MEN'S RR	SD-5	8"	175	1	143	187	171	97.7
SGRD8	DELIVERY	SD-6	8"	250	1	204	226	241	96.4
SGRD9	WOMEN'S RR	SD-5	8"	125	1	177	179	135	108.0
SGRD10	REAR VEST	SD-5	8"	250	1	207	220	229	91.6
Total				2400		2123	2502	2450	102.08%

Diffuser Ret/Exh (GRD)

RTU-3/SALES/RESTROOMS

Asset									
Asset Name	Location	Type	Size	DESIGN CFM	AK	CFM(1)	CFM(2)	FINAL CFM	% to design
EGRD1	HALLWAY RR	RG-3	8"	125	1	113	113	113	90.4
EGRD2	SALES		24X20	1725	3.33	1769	1769	1769	102.6
Total				1850		1882	1882	1882	101.73%

National TAB

Project: 03-16-26 WAWA #7222 SILVERTON, OH

System/Unit: FAN - Exhaust



Asset: EF-1

AREA:RESTROOMS

Unit Data		
	Design	Actual
MFG	GREENHECK	LOREN COOK
Model Num	GB-098-6	NA
Serial Num	-	NA
Type	DOWNBLAST	DOWNBLAST
Configuration	VERTICAL	VERTICAL

Motor Data		
	Design	Actual
Motor MFG	-	US MOTORS
Frame	-	48Y
Horsepower	0.167	0.167
Motor Rpm	-	1100
Phase	1	1
Voltage (rated)	120	115
Amperage (rated)	-	2.2

Test Data		
	Design	Actual
CFM	375	390
Fan Rotation	-	CORRECT
RL Voltage	-	INACCESSIBLE
RL Amperage	-	INACCESSIBLE
Suction ESP	-	-0.41"
Discharge ESP	-	ATM
Total ESP	0.38"	0.41"

Completed By: Corey Dick on 03/19/2026

Notes:

No unit tags. Diffusers not able to be balanced due to lack of face dampers.

Written By: Corey Dick on 03/19/2026

Unit Data - PHOTO LOG



03/19/2026

National TAB

Project:03-16-26 WAWA #7222 SILVERTON, OH

FAN - Exhaust



Diffuser Ret/Exh (GRD)

EF-1/RESTROOMS

Asset									
Asset Name	Location	Type	Size	DESIGN CFM	AK	CFM(1)	CFM(2)	FINAL CFM	% to design
EGRD1	MEN'S RR	EG-1	8X8	225	1	239	198	198	88.0
EGRD2	WOMEN'S RR	EG-1	8X8	150	1	224	192	192	128.0
Total				375		463	390	390	104%

National TAB

Project: 03-16-26 WAWA #7222 SILVERTON, OH

System/Unit: FAN - Exhaust



Asset: EF-2

AREA:BOH

Unit Data		
	Design	Actual
MFG	GREENHECK	LOREN COOK
Model Num	GB-098-6	NA
Serial Num	-	NA
Type	DOWNBLAST	DOWNBLAST
Configuration	VERTICAL	VERTICAL

Motor Data		
	Design	Actual
Motor MFG	-	US MOTORS
Frame	-	48Y
Horsepower	0.167	0.167
Motor Rpm	-	1100
Phase	1	1
Voltage (rated)	120	115
Amperage (rated)	-	2.2

Test Data		
	Design	Actual
CFM	1000	1023
Fan Rotation	-	CORRECT
RL Voltage	-	INACCESSIBLE
RL Amperage	-	INACCESSIBLE
Suction ESP	-	-0.49"
Discharge ESP	-	ATM
Total ESP	0.38"	0.49"

Completed By: Corey Dick on 03/19/2026

Notes:
No unit tags

Written By: Corey Dick on 03/19/2026

Unit Data - PHOTO LOG



03/19/2026

National TAB

Project:03-16-26 WAWA #7222 SILVERTON, OH

FAN - Exhaust



Diffuser Ret/Exh (GRD)

EF-2/BOH

Asset									
Asset Name	Location	Type	Size	DESIGN CFM	AK	CFM(1)	CFM(2)	FINAL CFM	% to design
EGRD1	BOH	RG-2	8X8	200	1	348	207	207	103.5
EGRD2	BOH	RG-2	8X8	400	1	338	418	418	104.5
EGRD3	BOH	RG-2	8x8	400	1	356	398	398	99.5
Total				1000		1042	1023	1023	102.3%

National TAB

Project: 03-16-26 WAWA #7222 SILVERTON, OH

System/Unit: FAN - Exhaust



Asset: EF-3

AREA: TRASH ROOM

Unit Data		
	Design	Actual
MFG	GREENHECK	GREENHECK
Model Num	SP-B200	SP-B200
Serial Num	-	NA
Type	CEILING	CEILING
Configuration	VERTICAL	HORIZONTAL

Motor Data		
	Design	Actual
Horsepower	0.167	0.167
Phase	1	1
Voltage (rated)	120	120

Test Data		
	Design	Actual
CFM	200	202
Fan Rotation	-	CORRECT
System SetPt	-	DIAL (MARKED)
RL Voltage	-	INACCESSIBLE
RL Amperage	-	INACCESSIBLE
Total ESP	0.50"	CEILING MOUNTED
Fan Inlet SP	-	CEILING MOUNTED
Fan Discharge SP	-	CEILING MOUNTED

Completed By: Corey Dick on 03/19/2026

Notes:
No unit tag

Written By: Corey Dick on 03/19/2026

