

BUILDING CODE DATA		
	CODE	
GENERAL	CALIFORNIA BUILDING CODE	2022
HVAC/MECHANICAL	CALIFORNIA MECHANICAL CODE	2022
PLUMBING	CALIFORNIA PLUMBING CODE	2022
ELECTRICAL	CALIFORNIA ELECTRICAL CODE	2022
FIRE PROTECTION	CALIFORNIA FIRE CODE	2022
	NFPA STANDARDS	CURRENT
FUEL	CALIFORNIA PLUMBING CODE	2022
ENERGY	CALIFORNIA ENERGY CODE	2022
LOCAL AMENDMENTS	TITLE 8 BUILDING REGULATIONS - AMENDMENTS	CURRENT

NOTES:
A. ALL WORK PERFORMED SHALL COMPLY WITH THE REQUIREMENTS OF THE LISTED CODES, LOCAL CODE AMENDMENTS, AND REFERENCED STANDARDS AS ENFORCED BY THE AUTHORITY HAVING JURISDICTION (AHJ).
B. ALL WORK SUBJECT TO INSPECTION BY THE AHJ AT THE PROJECT SITE FOR COMPLIANCE

PROJECT DESCRIPTION

THIS PROJECT CONSISTS OF A RESTAURANT TENANT FINISH OF AN EXISTING CORE AND SHELL BUILDING. THE NEW MECHANICAL WORK INCLUDES ROOFTOP UNITS FOR HEATING/COOLING/VENTILATION, COMMERCIAL KITCHEN HOOD SYSTEM WITH GREASE EXHAUST FAN/MAKEUP AIR UNIT, RESTROOM EXHAUST FAN, AND SYSTEM DUCTWORK/AIR DEVICES.

SECTION 15732 - PACKAGED ROOFTOP AIR-CONDITIONING UNITS

PART 1 - GENERAL

1.1 SECTION REQUIREMENTS

- Submittals: Product Data and Shop Drawings.
- Comply with ASHRAE 15.
- EER: Equal to or greater than prescribed by the energy code adopted by the Authority Having Jurisdiction.
- Warranties: Submit a written warranty, signed by the manufacturer, agreeing to the repair or replacement of components that fail within 5 years of Substantial Completion.

PART 2 - PRODUCTS

2.1 PACKAGED UNITS, 5 TO 20 TONS

- Factory assembled and tested, consisting of compressors, condensers, evaporator coils, condenser and evaporator fans, refrigeration and temperature controls, filters, and dampers.
 - Refer to Rooftop Heating/Cooling Unit Schedule on drawing M600 for capacities, and manufacturers.
 - Evaporator Fans: Belt or direct driven, forward curved centrifugal.
 - Exhaust/Relief Fans: Direct drive, forward curved centrifugal or propeller.
 - Condenser Fans: Direct drive propeller.
 - Refrigerant Coils: Aluminum fins and copper coil.
 - Compressors: Serviceable hermetic or fully hermetic, with safety controls, hot gas bypass, and timed off controls.
 - Heat Exchangers: Gas fired, with gas controls, electronic ignition, high limit cutout, and forced draft proving switch.
 - Economizer controls (Comparative Enthalpy, 100% capacity).
 - Smoke Detectors: Photoelectric in supply and/or return as called for in schedule on sheet M600.
 - Operating Controls: Two stage heating and two stage cooling on units 7-1/2 tons and over.
 - Roof curb.
 - Control Wiring from T-stat to rooftop unit: Shall be 18ga / 7 conductor, rated for plenum applications.
 - Control Wiring from T-stat to remote sensor: Shall be a separate 18ga / 2 conductor shielded, rated for plenum applications.

PART 3 - EXECUTION

3.1 INSTALLATION

- Install units level and plumb and firmly anchored.
- Test gas piping to burner with pipe same size as gas train inlet, and provide union with sufficient clearance for burner removal and service.
- Install ducts to termination in roof mounting frames. Terminate ducts through roof structure.
- Connect units to wiring systems and to ground.

END OF SECTION 15732

SECTION 15810 - DUCTS AND ACCESSORIES

PART 1 - GENERAL

1.1 SECTION REQUIREMENTS

- Submittals: Product Data for fire and smoke dampers.
- Comply with NFPA 90A for systems serving spaces more than 25,000 cu. ft. in volume or building Types II, IV, and V construction more than 3 stories in height.
- Comply with NFPA 90B for systems serving spaces in 1 or 2 family dwellings or serving spaces less than 25,000 cu. ft.
- Comply with NFPA 96, "Ventilation Control and Fire Protection of Commercial Cooking Operations," for kitchen hood ducts.
- Comply with UL 181 and UL 181A for ducts and closures.
- Testing, Adjusting, and Balancing Agency Qualifications: AABC certified (to be furnished by Tenant).

PART 2 - PRODUCTS

2.1 DUCTS

- Spiral Duct: Spiral Lock Seam, without insulation, G90 galvanized finish, ASTM A-653/924
 - Basis of Design Manufacturers: Lindab SPIROsafe, alternates to the basis of design must be submitted for review.
 - Fittings: Factory produced standing seam construction with internal sealing. Fittings with a major axis of 36" or smaller shall be 20 gauge. Fittings with a major axis of 37"-48" shall be 18 gauge.
- Galvanized Steel Sheet: Forming steel, ASTM A 653/653M, G90 coating designation.
- Duct Liner: ASTM C 1071, Type II, with an airstream surface coated with a temperature resistant coating. Thickness: 1-1/2 inch. R-value : 8.
 - Adhesive: ASTM C 916, Type I.
 - Mechanical Fasteners: Galvanized steel pin, length as required to penetrate liner plus a 1/8 inch projection maximum into the airstream.
- Joint and Seam Tape: Comply with UL 181A.
- Joint and Seam Sealant: Comply with UL 181A.
- Rectangular Metal Duct Fabrication: Comply with SMACNA's "HVAC Duct Construction Standard" for metal thickness, reinforcing types and intervals, tie rod applications, and joint types and intervals.

2.2 ACCESSORIES

- Volume-Control Dampers: Factory fabricated volume control dampers, complete with required hardware and accessories. Single blade and multiple opposed blade, standard leakage rating, and suitable for horizontal or vertical applications.
- Fire Dampers: Factory-fabricated fire dampers, complete with required hardware and accessories. UL labeled according to UL 555, "Fire Dampers".
- Flexible Connectors: Flame retardant or noncombustible fabrics, coatings, and adhesives complying with UL 181, Class 1.
- Flexible Ducts: Factory fabricated, insulated, round duct, with an outer jacket enclosing 2 inch thick, glass fiber insulation, R-value: 6.0, around a continuous inner liner.

PART 3 - EXECUTION

3.1 INSTALLATION

- Duct System Pressure Class: Construct and install each duct system with 2 inch positive and negative duct pressure classifications.
- Conceal ducts from view in finished and occupied spaces. Except where noted as exposed.
- Avoid passing through electrical equipment spaces and enclosures.
- Support and connect metal ducts according to SMACNA's "HVAC Duct Construction Standard".
- Install duct accessories according to applicable portions of details of construction as shown in SMACNA standards.
- Install liner and/or insulation on ductwork per the material schedule on sheet M010.
- Install volume control dampers in lined duct with methods to avoid damage to liner and to avoid erosion of duct liner.
- Install fire and smoke dampers according to manufacturer's UL approved written instructions.
- Install fusible links in fire dampers.
- Provide saddle taps at tees for exposed ductwork.

3.2 TESTING, ADJUSTING, AND BALANCING

- The Tenant will supply an independent balance agent to to balance and adjust the HVAC installation. The balance agent will be responsible for any pulley or belt changes required.
- The GC is to have trained staffed available during the balancing to correct issues noted by the balance agent.
- The balance agent is to balance airflow within distribution systems, including submains, branches, and terminals to indicated quantities +/- 10%. The hood exhaust system shall be balanced to a tolerance of -0+10% and the make-up air system to a tolerance of -10+0%.
- The balance agent is to supply a copy of the balance report to the Tenant, engineer and general contractor for review.

END OF SECTION 15810

SECTION 15855 - DIFFUSERS, REGISTERS, AND GRILLES

PART 1 - GENERAL

1.1 SECTION REQUIREMENTS

- Submittals: None.

PART 2 - PRODUCTS

2.1 OUTLETS AND INLETS

- All air terminal devices:
 - Refer to Grills, Registers, and Diffusers Schedule for equipment schedule
 - Manufacturer: As scheduled (NO SUBSTITUTIONS)
 - Material: As scheduled.
 - Finish: As scheduled.
 - Mounting: As scheduled.

PART 3 - EXECUTION

3.1 INSTALLATION

- Coordinate location and installation with duct installation and installation of other ceiling and wall mounted items.
- Locate ceiling diffusers, registers, and grilles, as indicated on the architectural "reflected ceiling plans." Unless otherwise indicated, locate units in center of acoustical ceiling panels.

END OF SECTION 15855

HVAC GENERAL NOTES

- GENERAL NOTES APPLY TO HVAC SHEETS.
- WORK SHALL COMPLY WITH STATE AND LOCAL CODE REQUIREMENTS AS APPROVED AND AMENDED BY THE AUTHORITY HAVING JURISDICTION, INCLUDING APPLICABLE SECTIONS OF NFPA, THE MECHANICAL CODE, AND ANY INTERIM AMENDMENTS AT THE TIME OF THE PROPOSAL. PURCHASE PERMITS ASSOCIATED WITH THE WORK. OBTAIN INSPECTIONS REQUIRED BY CODE. SEE ARCHITECTURAL SHEETS FOR THE PREVAILING CODES.
- CONTRACTOR AND SUBCONTRACTORS SHALL REVIEW A COMPLETE SET OF THE CONSTRUCTION DOCUMENTS.
- COORDINATE WORK WITH THE WORK OF OTHER TRADES, EQUIPMENT FURNISHED BY OTHERS, REQUIREMENTS OF THE OWNER, AND OF THE EXISTING CONDITIONS AT THE PROJECT SITE.
- DRAWINGS FOR THE MECHANICAL WORK ARE DIAGRAMMATIC, SHOWING THE GENERAL LOCATION, TYPE, LAYOUT, AND EQUIPMENT REQUIRED. THE DRAWING SHALL NOT BE SCALED FOR EXACT MEASUREMENTS, REFER TO ARCHITECTURAL DRAWINGS FOR DIMENSIONS. REFER TO MANUFACTURER'S STANDARD INSTALLATION DRAWINGS FOR EQUIPMENT CONNECTIONS AND INSTALLATION REQUIREMENTS. PROVIDE DUCTWORK, CONNECTIONS, OFFSETS, ACCESSORIES, AND MATERIALS NECESSARY FOR A COMPLETE SYSTEM.
- DUCT DIMENSIONS ON PLANS INDICATE DIMENSIONS OF INTERNAL FREE AREA.
- PERFORATED CEILING DIFFUSERS SHALL BE 4-WAY UNLESS NOTED OTHERWISE.
- COORDINATE ROOF WORK WITH THE OWNER'S CONSTRUCTION MANAGER PRIOR TO CONSTRUCTION.
- UNLESS NOTED OTHERWISE RECTANGULAR DUCT ELBOWS GREATER THAN 45° SHALL BE MITERED ELBOWS WITH DOUBLE-THICKNESS TURNING VANES AND RECTANGULAR DUCT ELBOWS 45° OR LESS SHALL BE RADIUSSED ELBOWS WITH AN INSIDE RADIUS OF AT LEAST 1/2 THE WIDTH OF THE DUCT.
- REPLACE AIR FILTERS WITH NEW, CLEAN MERV 8 AIR FILTERS AT TURNOVER.
- THE TERM "FURNISH" MEANS SUPPLY AND DELIVER TO THE PROJECT SITE, READY FOR UNLOADING, UNPACKING, ASSEMBLY, INSTALLATION, AND SIMILAR OPERATIONS. THE TERM "INSTALL" DESCRIBES THE OPERATIONS AT THE PROJECT SITE INCLUDING THE ACTUAL UNLOADING, UNPACKING, ASSEMBLY, ERECTING, PLACING, ANCHORING, APPLYING, WORKING TO DIMENSION, FINISHING, CURING, PROTECTING, CLEANING, AND SIMILAR OPERATIONS. THE TERM "PROVIDE" MEANS TO FURNISH AND INSTALL, COMPLETE AND READY FOR THE INTENDED USE.
- INSTALL LABELING CALLED FOR IN THE MECHANICAL DRAWINGS USING ENGRAVED PHENOLIC PLATES (WHITE WITH BLACK LETTERING).
- PROVIDE P3000 12 GA. UNISTRUT WITH PG FINISH FOR DUCT SUPPORTS AND OTHER UNISTRUT IN AREAS EXPOSED TO VIEW. SLOTTED UNISTRUT AND OTHER UNISTRUT WITH HOLES IS NOT ACCEPTABLE.
- SEE DETAILS SHEET P710 FOR SEISMIC MOUNTING DETAILS. ALL EQUIPMENT TO BE PROPERLY SUPPORTED, BRACED, AND RESTRAINED, PER DETAILS 1-4/P710.

HVAC MATERIAL SCHEDULE

	APPLICATION	ALLOWABLE MATERIAL
DUCT	CONCEALED, GENERAL EXHAUST	RECT. OR ROUND AS SHOWN
	CONCEALED, RETURN	RECT. OR ROUND AS SHOWN, LINED OR INSULATED
	CONCEALED, SUPPLY	RECT. OR ROUND AS SHOWN, LINED OR INSULATED
	CONCEALED, TYPE I HOOD EXHAUST	RECTANGULAR 16 GA. BLACK IRON W/ WRAP OR UL 1978 FACTORY-MANUFACTURED DUCT W/ WRAP (SUBMIT SHOP DRAWINGS FOR FACTORY-MANUFACTURED DUCT PRIOR TO ORDERING FOR APPROVAL)
	EXPOSED GENERAL EXHAUST	RECTANGULAR, NO EXPOSED DUCT-SEALING MASTIC
	EXPOSED RETURN	RECTANGULAR, NO EXPOSED DUCT-SEALING MASTIC
	EXPOSED SUPPLY	RECT. LINED OR ROUND AS SHOWN, NO EXPOSED DUCT-SEALING MASTIC

HVAC ABBREVIATIONS

(E)	EXISTING
ABV	ABOVE
ADA	AMERICANS WITH DISABILITIES ACT
AFF	ABOVE FINISHED FLOOR
AFG	ABOVE FINISHED GRADE
AHJ	AUTHORITY HAVING JURISDICTION
BFF	BELOW FINISHED FLOOR
BFG	BELOW FINISHED GRADE
BOH	BACK OF HOUSE
CLG	CEILING
CTE	CONNECT TO EXISTING
DN	DOWN
EXT'G	EXISTING
FLR	FLOOR
FOH	FRONT OF HOUSE
GYP	GYP SUM BOARD
NTS	NOT TO SCALE
O/H	OVERHEAD
OBD	OPPOSED BLADE DAMPER
TYP	TYPICAL
U/G	UNDERGROUND
UNO	UNLESS NOTED OTHERWISE
VFD	VARIABLE FREQUENCY DRIVE
VSC	VARIABLE SPEED CONTROLLER
W/	WITH
WIC	WALK-IN COOLER

CO2AS	TENANT'S CO2 ALARM SUPPLIER
GC	GENERAL CONTRACTOR
HES	TENANT'S HVAC EQUIPMENT SUPPLIER
HS	TENANT'S HOOD SUPPLIER
KES	TENANT'S KITCHEN EQUIPMENT SUPPLIER
LL	LANDLORD
MSS	TENANT'S MUSIC SYSTEMS SUPPLIER
SPS	TENANT'S SODA POP SUPPLIER
TAB	TENANT'S TEST AND BALANCE VENDOR
TCC	TENANT'S CABLING CONTRACTOR
TDC	TENANT'S DUCT CLEANER
TEMS	TENANT'S ENERGY MANAGEMENT SYSTEM SUPPLIER
TLS	TENANT'S LIGHT/LAMP SUPPLIER
TMB	TENANT'S MENU BOARD SUPPLIER
TMS	TENANT'S MILLWORK SUPPLIER
TP	TENANT'S PHONE SUPPLIER
TPS	TENANT'S PANELBOARD SUPPLIER
TRS	TENANT'S RAILING SUPPLIER
TSV	TENANT'S SIGN VENDOR
TUV	TENANT'S UV SNIATIZER SUPPLIER
WCS	TENANT'S WALK-IN COOLER SUPPLIER
WHS	TENANT'S WATER HEATER SUPPLIER

HVAC SYMBOLS

	CEILING DIFFUSER
	CEILING-MOUNTED RETURN OR EXHAUST REGISTER
	SUPPLY REGISTER
	RETURN GRILLE
	FLEXIBLE DUCT
	MITERED CORNER WITH TURNING VANES
	DUCTWORK INTERNAL FREE DIMENSIONS (WIDTH/HEIGHT)
	RECTANGULAR TO ROUND DUCT TRANSITION
	DUCT-MOUNTED SMOKE DETECTOR
	MOTOR-OPERATED DAMPER
	MANUAL VOLUME DAMPER
	GREASE DUCT CLEANOUT
	MITERED CORNER WITHOUT TURNING VANES
	GRIDPOINT THERMOSTAT
	GRIDPOINT ZONE SENSOR MODULE
	GRIDPOINT SUPPLY PROBE
	PLAN NOTE: SEE PLAN NOTES LISTED ON THE SAME SHEET FOR NOTE MEANING
	CONNECT TO EXISTING
	EQUIPMENT TAG: SEE EQUIPMENT SCHEDULE ON SHEET M600 FOR EQUIPMENT INFORMATION
	AUDIO/VISUAL REMOTE SMOKE DETECTOR
	ANNUNCIATOR WITH REMOTE KEY OPERATED RESET
	GRILL, REGISTER, OR DIFFUSER TAG: TAG NECK SIZE AIRFLOW [CFM]

Consultant:

Bowman

323 3RD AVENUE, #100
LONGMONT, CO 80501
TEL 303.676.1100
WWW.BOWMAN.COM



COPYRIGHT 2023
THIS DRAWING IS AN INSTRUMENT OF SERVICE AND AS SUCH REMAINS THE PROPERTY OF CHIPOTLE MEXICAN GRILL, INC. PERMISSION FOR USE OF THIS DOCUMENT IS LIMITED AND CAN BE EXTENDED ONLY BY WRITTEN AGREEMENT WITH CHIPOTLE MEXICAN GRILL, INC..



CHIPOTLE MEXICAN GRILL, INC.
PO BOX 182566
COLUMBUS, OH 43218-2566
TELEPHONE: 614.318.2400
INTERNET: WWW.CHIPOTLE.COM

STORE NO.: 04-5168

CHRISTIE & SHELLMOUND
5761 CHRISTIE AVENUE
EMERYVILLE, CA 94608

Issue Record:

01/11/2024	PERMIT SET
03/20/2024	ADDENDUM 1
05/01/2024	IFC SET

Revisions:

1	02/16/24	PLAN REVIEW COMMENTS
---	----------	----------------------

Drawn:	PM:	CC:	Checked:
SF	BE	WS	PD

Project No.

230458

Contents:

HVAC SPECIFICATIONS

M010

Mechanical Systems CERTIFICATE OF COMPLIANCE NRCC-MCH-E Project Name: Chipotle Mexican Grille - Emeryville, CA 5168 Report Page: (Page 1 of 11) Date Prepared: 2024-02-16T12:33:48-05:00

Table A: GENERAL INFORMATION. Includes Project Location (Emeryville), Climate Zone (3), and Occupancy Types (Restaurant).

B. PROJECT SCOPE: This table includes mechanical systems or components that are within the scope of the permit application and are demonstrating compliance using the prescriptive path outlined in 140.4, 170.2(b) or 141.0(b)(2) and 180.2(b)(2) for alterations.

Table B: Project Scope. Checklist for Air System(s), Wet System Components, and Dry System Components.

Generated Date/Time: Documentation Software: Energy Code Ace. CA Building Energy Efficiency Standards - 2022 Nonresidential Compliance. Report Version: 2022.0.000. Compliance ID: 178081-0224-0003. Schema Version: rev 20220101. Report Generated: 2024-02-16 09:33:54

Mechanical Systems CERTIFICATE OF COMPLIANCE NRCC-MCH-E Project Name: Chipotle Mexican Grille - Emeryville, CA 5168 Report Page: (Page 4 of 11) Date Prepared: 2024-02-16T12:33:48-05:00

F. HVAC SYSTEM SUMMARY (DRY & WET SYSTEMS) Dry System Equipment Efficiency (other than Package Terminal Air Conditioners (PTAC) and Package Terminal Heat Pumps (PTHP), DX-DOAS and Dual Fuel Heat Pumps)

Table F: HVAC System Summary. Columns for Equipment Tag, Name, Size Category, Heating Mode, and Cooling Mode.

G. PUMPS: This section does not apply to this project.

Generated Date/Time: Documentation Software: Energy Code Ace. CA Building Energy Efficiency Standards - 2022 Nonresidential Compliance. Report Version: 2022.0.000. Compliance ID: 178081-0224-0003. Schema Version: rev 20220101. Report Generated: 2024-02-16 09:33:54

Mechanical Systems CERTIFICATE OF COMPLIANCE NRCC-MCH-E Project Name: Chipotle Mexican Grille - Emeryville, CA 5168 Report Page: (Page 2 of 11) Date Prepared: 2024-02-16T12:33:48-05:00

C. COMPLIANCE RESULTS

Table C will indicate if the project data input into the compliance document is compliant with mechanical requirements. This table is not editable by the user. If this table says "DOES NOT COMPLY" or "COMPLIES with Exceptional Conditions" refer to Table D, or the table indicated as not compliant for guidance.

Table C: Compliance Results. Grid showing compliance status for various equipment categories like Pumps, Fans/Economizers, System Controls, Ventilation, Terminal Box Controls, Distribution, and Cooling Towers.

D. EXCEPTIONAL CONDITIONS: This table is auto-filled with uneditable comments because of selections made or data entered in tables throughout the form.

E. ADDITIONAL REMARKS: This table includes remarks made by the permit applicant to the Authority Having Jurisdiction.

F. HVAC SYSTEM SUMMARY (DRY & WET SYSTEMS) Space Conditioning System Information

Table F: HVAC System Summary. Columns for System Name, Quantity, System Serving, System Status, Space Type, and Utilizing Recovered Heat.

Generated Date/Time: Documentation Software: Energy Code Ace. CA Building Energy Efficiency Standards - 2022 Nonresidential Compliance. Report Version: 2022.0.000. Compliance ID: 178081-0224-0003. Schema Version: rev 20220101. Report Generated: 2024-02-16 09:33:54

Mechanical Systems CERTIFICATE OF COMPLIANCE NRCC-MCH-E Project Name: Chipotle Mexican Grille - Emeryville, CA 5168 Report Page: (Page 5 of 11) Date Prepared: 2024-02-16T12:33:48-05:00

H. FAN SYSTEMS & AIR ECONOMIZERS

This table is used to demonstrate compliance with prescriptive requirements found in 140.4(c), 140.4(e), 140.4(m), 170.2(c)(3), and 170.2(c)(4A) for fan systems. Fan systems serving only process loads are exempt from these requirements and do not need to be included in Table H.

Table H: Fan Systems & Air Economizers. Grid for Fan Name or Item Tag, RTU-1, RTU-2, and various efficiency and design parameters.

FOOTNOTES: Fans serving spaces with design background noise goals below NC35

Generated Date/Time: Documentation Software: Energy Code Ace. CA Building Energy Efficiency Standards - 2022 Nonresidential Compliance. Report Version: 2022.0.000. Compliance ID: 178081-0224-0003. Schema Version: rev 20220101. Report Generated: 2024-02-16 09:33:54

Mechanical Systems CERTIFICATE OF COMPLIANCE NRCC-MCH-E Project Name: Chipotle Mexican Grille - Emeryville, CA 5168 Report Page: (Page 3 of 11) Date Prepared: 2024-02-16T12:33:48-05:00

F. HVAC SYSTEM SUMMARY (DRY & WET SYSTEMS) Space Conditioning System Information

Table F: HVAC System Summary. Columns for System Name, Quantity, System Serving, System Status, Space Type, and Utilizing Recovered Heat.

Dry System Equipment Sizing (includes air conditioners, condensers, heat pumps, VRF, furnaces and unit heaters and DOAS systems)

Table F: HVAC System Summary. Grid for Equipment Sizing per Mechanical Schedule, Heating Output, Cooling Output, and Load Calculations.

FOOTNOTES: Equipment shall be the smallest size, within the available options of the desired equipment line, necessary to meet the design heating and cooling loads of the building per 140.4(a) and 170.2(c)(1). Healthcare facilities are exempt. It is common practice to show rated output capacity on the equipment schedule. Sensible cooling output comes from specification sheet tables. If equipment is heating only, leave cooling output and load blank. If equipment is cooling only, leave heating output and load blank. Authority Having Jurisdiction may ask for load calculations used for compliance per 140.4(b) and 170.2(c).

Generated Date/Time: Documentation Software: Energy Code Ace. CA Building Energy Efficiency Standards - 2022 Nonresidential Compliance. Report Version: 2022.0.000. Compliance ID: 178081-0224-0003. Schema Version: rev 20220101. Report Generated: 2024-02-16 09:33:54

Mechanical Systems CERTIFICATE OF COMPLIANCE NRCC-MCH-E Project Name: Chipotle Mexican Grille - Emeryville, CA 5168 Report Page: (Page 6 of 11) Date Prepared: 2024-02-16T12:33:48-05:00

H. FAN SYSTEMS & AIR ECONOMIZERS

Low-turndown single-zone VAV fan system must be capable of and configured to reduce airflow to 50 percent of design airflow and use no more than 30 percent of the design wattage at that airflow. No more than 10 percent of the design load served by the equipment shall have fixed loads.

Table H: Fan Systems & Air Economizers. Grid for Fan Name or Item Tag, RTU-1, RTU-2, and various efficiency and design parameters.

Table H: Fan Energy Index (FEI). Grid for Name or Item Tag, FEI Exception, and FEI.

I. SYSTEM CONTROLS

This table is used to demonstrate compliance with mandatory controls in 110.2 and 120.2 and prescriptive controls in 140.4(f) and (n), 170.2(c)(4D) 170.2(c)(4L) or requirements in 141.0(b)(2) 180.2(b)(2) for altered space conditioning systems.

Table I: System Controls. Grid for System Name, System Zoning, Conditioned Floor Area, Thermostats, Shut-Off Controls, Isolation Zone Controls, Demand Response, Supply Air Temp. Reset, and Window Interlocks.

FOOTNOTES: Gravity gas wall heaters, gravity floor heaters, gravity room heaters, non-central electric heaters, fireplaces or decorative gas appliances, wood stoves are not required to have setback thermostats.

Generated Date/Time: Documentation Software: Energy Code Ace. CA Building Energy Efficiency Standards - 2022 Nonresidential Compliance. Report Version: 2022.0.000. Compliance ID: 178081-0224-0003. Schema Version: rev 20220101. Report Generated: 2024-02-16 09:33:54

Consultant:



COPYRIGHT 2023. THIS DRAWING IS AN INSTRUMENT OF SERVICE AND AS SUCH REMAINS THE PROPERTY OF CHIPOTLE MEXICAN GRILL, INC. PERMISSION FOR USE OF THIS DOCUMENT IS LIMITED AND CAN BE EXTENDED ONLY BY WRITTEN AGREEMENT WITH CHIPOTLE MEXICAN GRILL, INC.



CHIPOTLE MEXICAN GRILL, INC. PO BOX 182566 COLUMBUS, OH 43218-2566 TELEPHONE: 614.318.2400 INTERNET: WWW.CHIPOTLE.COM

STORE NO.: 04-5168 CHRISTIE & SHELLMOUND 5761 CHRISTIE AVENUE EMERYVILLE, CA 94608

Issue Record: 01/11/2024 PERMIT SET, 03/20/2024 ADDENDUM 1, 05/01/2024 IFC SET

Revisions table with columns for Description, Date, and Author.

Drawn: SF PM: BE CC: WS Checked: PD

Project No: 230458

Contents:

TITLE 24 FORMS

M011

J. VENTILATION AND INDOOR AIR QUALITY
 This table is used to demonstrate compliance with mandatory ventilation requirements in 120.1 120.2(a)3B 140.4(p) and 140.4(q) for all nonresidential and hotel/motel and d:124refnolk/160.2, 160.3(a)3D, 170.2(a)4N, 170.2(a)4O for high-rise residential occupancies. For alterations, only ventilation systems being altered within the scope of the permit application need to be documented in this table. In lieu of this table, the required outdoor ventilation rates and airflows may be shown on the plans or the calculations can be presented in a spreadsheet.

01	<input checked="" type="checkbox"/>	Check the box if the project is showing ventilation calculations on the plans, or attaching the calculations instead of completing this table.
02	<input type="checkbox"/>	Check this box if the project included Nonresidential, Hotel/Motel Spaces or Multifamily Common Use Spaces
03	<input type="checkbox"/>	Check the box if the project is using natural ventilation in any nonresidential or hotel/motel spaces to meet required ventilation rates per 120.1(c)2.

K. TERMINAL BOX CONTROLS
 This section does not apply to this project.

L. DISTRIBUTION (DUCTWORK and PIPING)
 This table is used to show compliance with mandatory pipe insulation requirements found in 120.3 and mandatory requirements found in 120.4(g) for duct sealing.

01	<input type="checkbox"/>	Insulation shall be protected from damage, including that due to sunlight, moisture, equipment maintenance, and wind. Insulation exposed to weather shall be installed with a cover suitable for outdoor service. Insulation covering chilled water piping and refrigerant suction piping located outside the conditioned space shall have a Class I or Class II vapor retarder. All penetrations and joints of which shall be sealed.
----	--------------------------	--

Duct Leakage Testing
 The answers to the questions below apply to the following duct systems: M100 NR/ Common Use: Duct leakage testing shall not exceed 6% per NA7-5.3 required for these systems? Yes

Q. MANDATORY MEASURES DOCUMENTATION LOCATION
 This table is used to indicate where mandatory measures are documented in the plan set or construction documentation.

01		02
Compliance with Mandatory Measures documented through MCH Mandatory Measures Note Block	Yes	Plan sheet or construction document location M600

L. DISTRIBUTION (DUCTWORK and PIPING)

		Dwelling Units: Total duct leakage of duct system shall not exceed 12% or duct system to outside shall not exceed 6% per RA3.1.4 required for systems?	---
		Duct leakage testing per CMC Section 603.10.1 required for these systems?	No
11	No	The scope of the project includes only duct systems serving healthcare facilities	
12	Yes	Duct system provides conditioned air to an occupiable space for a constant volume, single zone, space-conditioning system.	
13	Yes	The space conditioning system serves less than 5,000 ft ² of conditioned floor area.	
14	Yes	The combined surface area of the ducts is more than 25% of the total surface area of the entire duct system.	
15	No	The scope of the project includes extending an existing duct system, which is constructed, insulated or sealed with asbestos.	
16	No	The scope of the project includes an existing duct system that is documented to have been previously sealed as confirmed through field verification and diagnostic testing in accordance with procedures in the Reference Nonresidential Appendix NA2.	
17	Yes	All Ductwork and plenums with pressure class ratings shall be constructed to Seal Class A	
18	No	All ductwork is an extension of an existing duct system	
19	No	Ductwork serving individual dwelling unit	
20		< 25 ft of new or replacement space conditioning ducts installed	
21	R-8	Duct Insulation R-value	
22	No	Ductwork Existing To Remain	
23	No	Duct System Connected To Altered Space Conditioning System	

M. COOLING TOWERS
 This section does not apply to this project.

DOCUMENTATION AUTHOR'S DECLARATION STATEMENT
 I certify that this Certificate of Compliance documentation is accurate and complete.

Documentation Author Name: Walter Shoup
 Company: Bowman
 Address: 323 3rd Ave, Suite 100
 City/State/Zip: Longmont, CO 80501

Documentation Author Signature: [Signature]
 Signature Date: 4/2/24
 License: [Blank]
 Phone: 303-678-1108

RESPONSIBLE PERSON'S DECLARATION STATEMENT
 I certify the following under penalty of perjury under the laws of the State of California:
 1. The information provided on this Certificate of Compliance is true and correct.
 2. I am eligible under Division 3 of the Business and Professions Code to accept responsibility for the building design or system design identified on this Certificate of Compliance (responsible designer)
 3. The energy features and performance specifications, materials, components, and manufactured devices for the building design or system design identified on this Certificate of Compliance conform to the requirements of Title 24, Part 1 and Part 6 of the California Code of Regulations.
 4. The building design features or system design features identified on this Certificate of Compliance are consistent with the information provided on other applicable compliance documents, worksheets, calculations, plans and specifications submitted to the enforcement agency for approval with this building permit application.
 I understand that a completed signed copy of this Certificate of Compliance is required to be included with the documentation the builder provides to the building owner at occupancy.

Responsible Designer Name: Walter Shoup
 Company: Bowman
 Address: 323 3rd Ave, Suite 100
 City/State/Zip: Longmont, CO 80501

Responsible Designer Signature: [Signature]
 Signature Date: 4/2/24
 License: [Blank]
 Phone: 303-678-1108

N. DECLARATION OF REQUIRED CERTIFICATES OF INSTALLATION
 Selections have been made based on information provided in previous tables of this document. If any selection needs to be changed, please explain why in Table E Additional Remarks. These documents must be provided to the building inspector during construction and can be found online at <https://www.energy.ca.gov/programs-and-topics/programs/building-energy-efficiency-standards/2022-building-energy-efficiency-4>

Form/Title: NRCI-MCH-01-E - Must be submitted for all buildings

O. DECLARATION OF REQUIRED CERTIFICATES OF ACCEPTANCE
 Selections have been made based on information provided in previous tables of this document. If any selection needs to be changed, please explain why in Table E Additional Remarks. These documents must be provided to the building inspector during construction and can be found online at https://www.energy.ca.gov/title24/2019standards/2019_compliance_documents/Nonresidential_Documents/NRCA/

Form/Title: NRCA-MCH-02-A - Outdoor Air must be submitted for all newly installed HVAC units. Note: MCH-02-A can be performed in conjunction with MCH-07-A Supply Fan VFD Acceptance (if applicable) since testing activities overlap.
 NRCA-MCH-04 - Air Distribution Duct Leakage M100
 NRCA-MCH-05-A - Air Economizer Controls RTU-1; RTU-2
 NRCA-MCH-13-A Automatic FDD for Air Handling Units and Zone Terminal Units Acceptance RTU-1; RTU-2

P. DECLARATION OF REQUIRED CERTIFICATES OF VERIFICATION
 Selections have been made based on information provided in previous tables of this document. If any selection needs to be changed, please explain why in Table E Additional Remarks. These documents must be completed by a HERS Rater and provided to the building inspector during construction. The final documents must be created by a HERS Provider's registry, but drafts can be found online at https://www.energy.ca.gov/title24/2019standards/2019_compliance_documents/Nonresidential_Documents/NRCV/

Form/Title: NRCV-MCH-04-H Duct Leakage Test NOTE: Must be completed by a HERS Rater



COPYRIGHT 2023
 THIS DRAWING IS AN INSTRUMENT OF SERVICE AND AS SUCH REMAINS THE PROPERTY OF CHIPOTLE MEXICAN GRILL, INC. PERMISSION FOR USE OF THIS DOCUMENT IS LIMITED AND CAN BE EXTENDED ONLY BY WRITTEN AGREEMENT WITH CHIPOTLE MEXICAN GRILL, INC.



STORE NO.: 04-5168
 CHRISTIE & SHELLMOUND
 5761 CHRISTIE AVENUE
 EMERYVILLE, CA 94608

Issue Record:

01/11/2024	PERMIT SET
03/20/2024	ADDENDUM 1
05/01/2024	IFC SET

Revisions:

4	04/02/24	IFC REVISIONS
---	----------	---------------

Drawn: SF PM: BE CC: WS Checked: PD

Project No:
 230458

Contents:
 TITLE 24 FORMS

M012



COPYRIGHT 2023
 THIS DRAWING IS AN INSTRUMENT OF SERVICE AND AS SUCH REMAINS THE PROPERTY OF CHIPOTLE MEXICAN GRILL, INC.. PERMISSION FOR USE OF THIS DOCUMENT IS LIMITED AND CAN BE EXTENDED ONLY BY WRITTEN AGREEMENT WITH CHIPOTLE MEXICAN GRILL, INC..



CHIPOTLE MEXICAN GRILL, INC.
 PO BOX 182566
 COLUMBUS, OH 43218-2566
 TELEPHONE: 614.318.2400
 INTERNET: WWW.CHIPOTLE.COM

STORE NO.: 04-5168
 CHRISTIE & SHELLMOUND
 5761 CHRISTIE AVENUE
 EMERYVILLE, CA 94608

Issue Record:

01/11/2024	PERMIT SET
03/20/2024	ADDENDUM 1
05/01/2024	IFC SET

Revisions:

1	02/16/24	PLAN REVIEW COMMENTS
3	03/20/24	PERMIT REVISIONS

Drawn: SF PM: BE CC: WS Checked: PD

Project No.
230458

Contents:
HVAC SCHEDULES

M600

AIR BALANCE SCHEDULE

TAG	SUPPLY FLOW	RETURN FLOW	EXHAUST FLOW	SUBTOTAL
EF-1	0 CFM	0 CFM	2,550 CFM	-2,550 CFM
EF-2	0 CFM	0 CFM	150 CFM	-150 CFM
MAU-1	1,300 CFM	0 CFM	0 CFM	1,300 CFM
RTU-1	2,400 CFM	1,650 CFM	0 CFM	750 CFM
RTU-2	1,600 CFM	850 CFM	0 CFM	750 CFM
NET PRESSURIZATION				100 CFM

CONTROL FUNCTIONS

A. THE MAIN COOKING EXHAUST FAN, MAKE-UP AIR UNIT, AND ROOFTOP UNITS SHALL BE INTERLOCKED TO OPERATE TOGETHER. ROOFTOP UNITS SHALL OPEN OUTSIDE AIR DAMPER WHEN ENGAGED VIA INTERLOCK TO PROVIDE MAKE-UP AIR TO HOOD. THIS CONTROL CIRCUIT IS ACTIVATED BY A SWITCH AND INCLUDES A FIRE PROTECTION OVERRIDE.

B. THE TEMPERATURE IN EACH ZONE IS CONTROLLED BY SPACE TEMPERATURE SENSORS CONNECTED TO THE THERMOSTATS LOCATED IN THE OFFICE. ALL ZONES SHALL OPERATE WITH CONTINUOUS FAN OPERATION DURING OCCUPIED TIMES AND INTERMITTENTLY AS NEEDED TO MAINTAIN SET POINTS DURING UNOCCUPIED TIMES. OUTSIDE AIR DAMPERS SHALL BE OPEN CONTINUOUSLY WHEN EITHER IN OCCUPIED MODE OR WHEN THE HOOD SYSTEM IS ON AND SHALL BE CLOSED DURING UNOCCUPIED PERIODS.

C. THE THERMOSTATS SHALL DETERMINE OCCUPIED/UNOCCUPIED STATUS BASED ON THE SCHEDULE IN THE ENERGY MANAGEMENT SYSTEM.

AIR TERMINAL SCHEDULE

TAG	DESCRIPTION	FACE SIZE	MATERIAL	FINISH	MOUNTING	FURNISHED BY	INSTALLED BY	BASIS FOR DESIGN		NOTES
								MANUFACTURER	MODEL	
CD1	PERFORATED CEILING DIFFUSER	24" X 24"	ALUMINUM	WHITE	LAY-IN CEILING	GC	GC	NAILOR	4320A TYPE L	PROVIDE WITH INTEGRAL OBD
CD2	PERFORATED CEILING DIFFUSER	24" X 12"	ALUMINUM	WHITE	LAY-IN CEILING	GC	GC	NAILOR	4320A TYPE L	PROVIDE WITH INTEGRAL OBD, REMOVE 4-WAY DEFLECTORS
ER1	PERFORATED CEILING EXHAUST	12" X 12"	ALUMINUM	WHITE	SURFACE MOUNT	GC	GC	NAILOR	4330R TYPE S	PROVIDE INTEGRAL OBD
RG1	PERFORATED CEILING RETURN	48" X 24"	ALUMINUM	WHITE	LAY-IN CEILING	GC	GC	NAILOR	4330R TYPE L	
RG2	PERFORATED CEILING RETURN	48" X 24"	ALUMINUM	WHITE	SURFACE MOUNT	GC	GC	NAILOR	4330R TYPE S	
SR1	ADJUSTABLE TURBO NOZZLE	SEE NECK SIZE	ALUMINUM	WHITE	WALL	GC	GC	AIR CONCEPTS	ANR-08	PROVIDE WITH CONCEALED MOUNTING AND FACE-ACCESSIBLE OBD
SR2	DOUBLE DEFLECTION SUPPLY REGISTER	SEE NECK SIZE	ALUMINUM	WHITE	WALL	GC	GC	NAILOR	51DH	PROVIDE WITH INTEGRAL OBD

SANITIZING EQUIPMENT SCHEDULE

TAG	COUNT	DESCRIPTION	FURNISHED BY	INSTALLED BY	BASIS FOR DESIGN		REMARKS
					MANUFACTURER	MODEL	
SB-1	2	BATHROOM AIR PURIFICATION UNIT	TUV	GC	RGF ENVIRONMENTAL GROUP	BRU ASSEMBLY	SEE ELECTRICAL SHEETS FOR CONNECTION INFORMATION
SH-1	2	HVAC AIR PURIFICATION UNIT	TUV	GC	RGF ENVIRONMENTAL GROUP	REME-HALO	SEE DETAIL 6/M700 FOR INSTALLATION INFORMATION.
SI-1	3	ICE MACHINE TREATMENT SYSTEM	TUV	GC	RGF ENVIRONMENTAL GROUP	IMS-B-GA	SEE PLUMBING DRAWINGS FOR INSTALLATION INFORMATION.

FAN SCHEDULE

TAG	DESCRIPTION	AIRFLOW	E.S.P.	WEIGHT	ELECTRICAL		FURNISHED BY	INSTALLED BY	BASIS FOR DESIGN		REMARKS
					MOTOR POWER	V/P/H			MANUFACTURER	MODEL	
EF-1	UPBLAST UL762 EXHAUST FAN	2,550 CFM	1.20 in-wg	400 lb	2 hp	208/3/60	HS	GC	CAPTIVE-AIRE	DU180HFA	DIRECT DRIVE UL762 UPBLAST EXHAUST FAN FURNISHED WITH WEATHERPROOF DISCONNECT AND VENTED ROOF CURB
EF-2	DOWNBLAST RESTROOM EXHAUST FAN	150 CFM	0.60 in-wg	100 lb	0.18 hp	120/1/60	HS	GC	CAPTIVE-AIRE	DR12HFA	DIRECT DRIVE DOWNBLAST RESTROOM EXHAUST FAN FURNISHED WITH INTEGRAL DISCONNECT, SPEED CONTROL, BACKDRAFT DAMPER, AND CURB

VIROGUARD SCHEDULE

TAG	COUNT	DESCRIPTION	DUCT CONNECTION SIZE	FAN	FURNISHED BY	INSTALLED BY	BASIS FOR DESIGN MANUFACTURER
VG-1	1	VIROGUARD HOOD EXHAUST FAN ROOFTOP CONTAINMENT SYSTEM	16" X 16"	CAPTIVE-AIRE DU180HFA	TDC	GC	ENVIROMATIC

CONDENSING UNIT SCHEDULE

TAG	DESCRIPTION	NOMINAL CAPACITY	NUMBER OF		REFRIGERANT		WEIGHT	ELECTRICAL			FURNISHED BY	INSTALLED BY	BASIS FOR DESIGN		REMARKS
			COMPRESSORS	CIRCUITS	TYPE	CHARGE		MOC	FLA	V/P/H			MANUFACTURER	MODEL	
CU-1	CONDENSING UNIT - WALK-IN COOLER		1	1	R-404A	10.4 lb	250 lb	15 A	9 A	208/3/60	WCS	GC	HARFORD	KPCL99M20P-3E	FURNISHED WITH WALK-IN COOLER
CU-2	REMOTE CONDENSER - LOW CAPACITY ICE MAKER		0	1	R-404A	11.46 lb	100 lb			120/1/60	KES	GC	HOSHIZAKI	URC-9F	FURNISHED WITH ICE MAKER
CU-3	REMOTE CONDENSER - SODA MACHINE ICE MAKER		0	1	R-404A	3.86 lb	100 lb			120/1/60	KES	GC	HOSHIZAKI	URC-5F	FURNISHED WITH ICE MAKER

MAKEUP AIR UNIT SCHEDULE

TAG	DESCRIPTION	AIRFLOW	E.S.P.	HEATING			WEIGHT	ELECTRICAL		FURNISHED BY	INSTALLED BY	BASIS FOR DESIGN		REMARKS
				INPUT	OUTPUT	EAT		MOTOR POWER	V/P/H			MANUFACTURER	MODEL	
MAU-1	DIRECT-FIRED MAKEUP AIR UNIT	1,300 CFM	0.50 in-wg	225,000 Btu/h	220,000 Btu/h	21 °F	650 lb	1 hp	208/3/60	HS	GC	CAPTIVE-AIRE	A1-D.250-15D	12.5:1 MAX TURNDOWN. FURNISHED WITH DISCONNECT, ROOF CURB, SCREEN INTAKE, AND WASHABLE ALUMINUM FILTERS

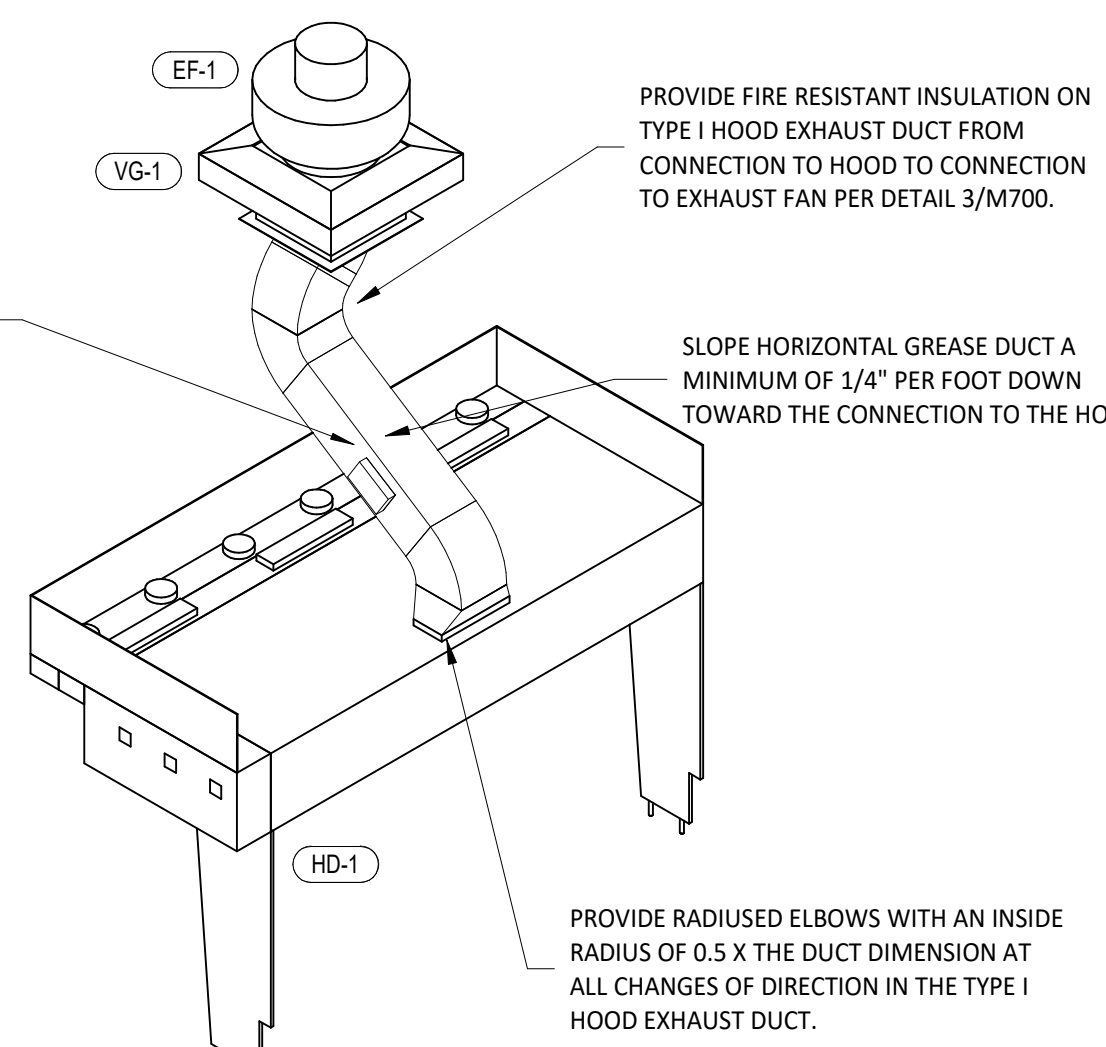
KITCHEN HOOD SCHEDULE

TAG	DESCRIPTION	MAX COOKING TEMP.	EXHAUST PLENUM							PERFORATED SUPPLY PLENUMS							NO. OF LIGHT FIXTURES	WEIGHT	FURNISHED BY	INSTALLED BY	BASIS FOR DESIGN		REMARKS		
			AIRFLOW	E.S.P.	DUCT COLLARS		LENGTH	WIDTH	LENGTH	WIDTH	MAU PLENUM			AC PLENUM		MANUFACTURER					MODEL				
					NO.	WIDTH					AIRFLOW	NO.	WIDTH	DIAMETER											
HD-1	TYPE I CANOPY HOOD WITH PERFORATED MAU AND AC SUPPLY PLENUMS	600 °F	2,550 CFM	0.97 in-wg	1	10"	2' - 0"	12' - 9"	4' - 3"	13' - 9"	1' - 7"	1,300 CFM	3	6"	2' - 4"	700 CFM	6	8"	8	1,150 lb	HS	GC	CAPTIVE-AIRE	5424 ND-2-ACPSP-F	MAT'L: 18 GA. TYPE 430 SS. FURNISHED WITH VERTICAL END PANELS, VAPORPROOF INCANDESCENT LIGHT FIXTURES, 16" TALL HE SS FILTERS, INTEGRAL UTILITY CABINET, KITCHEN EXHAUST SUPPRESSION SYSTEM, DUCT COLLAR TEMPERATURE SENSOR, PREWIRE PACKAGE, SPARE FIRE SYSTEM DRY CONTACT, AND 4-POLE 20A CONTACTOR

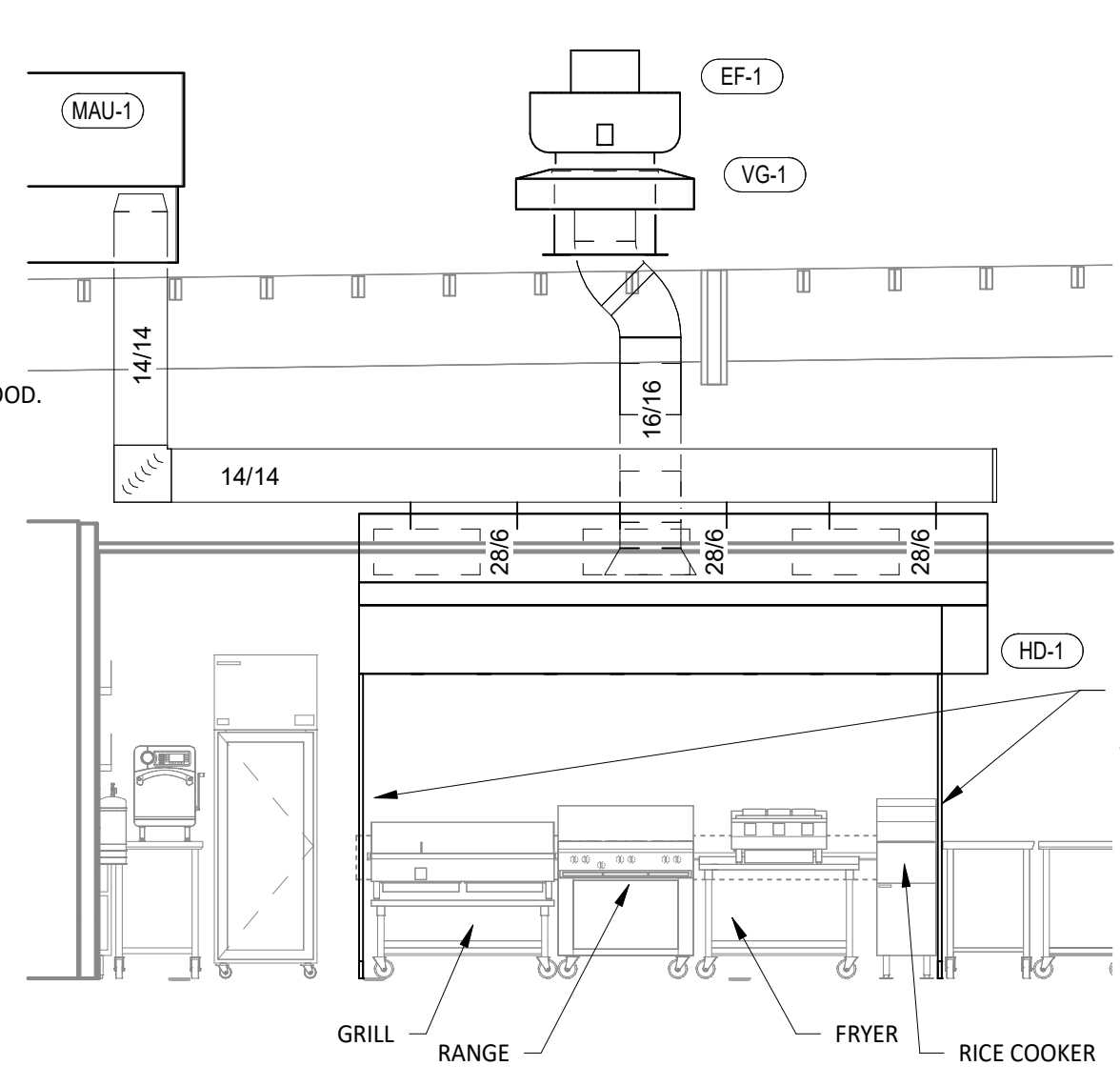
ROOFTOP UNIT SCHEDULE

TAG	DESCRIPTION	NOMINAL CAPACITY	EER	AIRFLOW			NET COOLING CAPACITY				HEATING CAPACITY			NUMBER OF		REFRIGERANT		ELECTRICAL			FURNISHED BY	INSTALLED BY	BASIS FOR DESIGN		REMARKS		
				TOTAL	OA	E.S.P.	TOTAL	SENSIBLE	DB	WB	COND. EAT	INPUT	OUTPUT	EAT	COMPRESSORS	CIRCUITS	TYPE	CHARGE	WEIGHT	MOC			FLA	V/P/H		MANUFACTURER	MODEL
				RTU-1	KITCHEN ROOFTOP UNIT	6 ton	11	2,400 CFM	750 CFM	0.80 in-wg	79,040 Btu/h	58,490 Btu/h	80 °F	67 °F	85 °F	150,000 Btu/h	120,000 Btu/h	60 °F	2	2			R-410A	17.3 lb		1,182 lb	50 A
RTU-2	DINING ROOM ROOFTOP UNIT	4 ton	12	1,600 CFM	750 CFM	0.80 in-wg	50,290 Btu/h	38,410 Btu/h	80 °F	67 °F	85 °F	130,000 Btu/h	104,000 Btu/h	60 °F	2	2	R-410A	15.8 lb	1,350 lb	35 A	20.8 A	208/3/60	HES	GC	TRANE	YSC048G3	FURNISHED WITH COMP. ENTHALPY ECON., BAROMETRIC RELIEF, RET. SMOKE DETECTOR W/ REMOTE KEYED ANNUNCIATOR/RESET, M.O.D., MERV-8 FILTERS, CURB, HAIL GUARD, TOOLLESS HINGED ACCESS PANELS, DISCONNECT, & UNIT-MOUNTED CONVENIENCE RECEPTACLE. PROVIDE COIL COATING FOR SEACOAST PROTECTION. PROVIDE SEISMIC CURB.

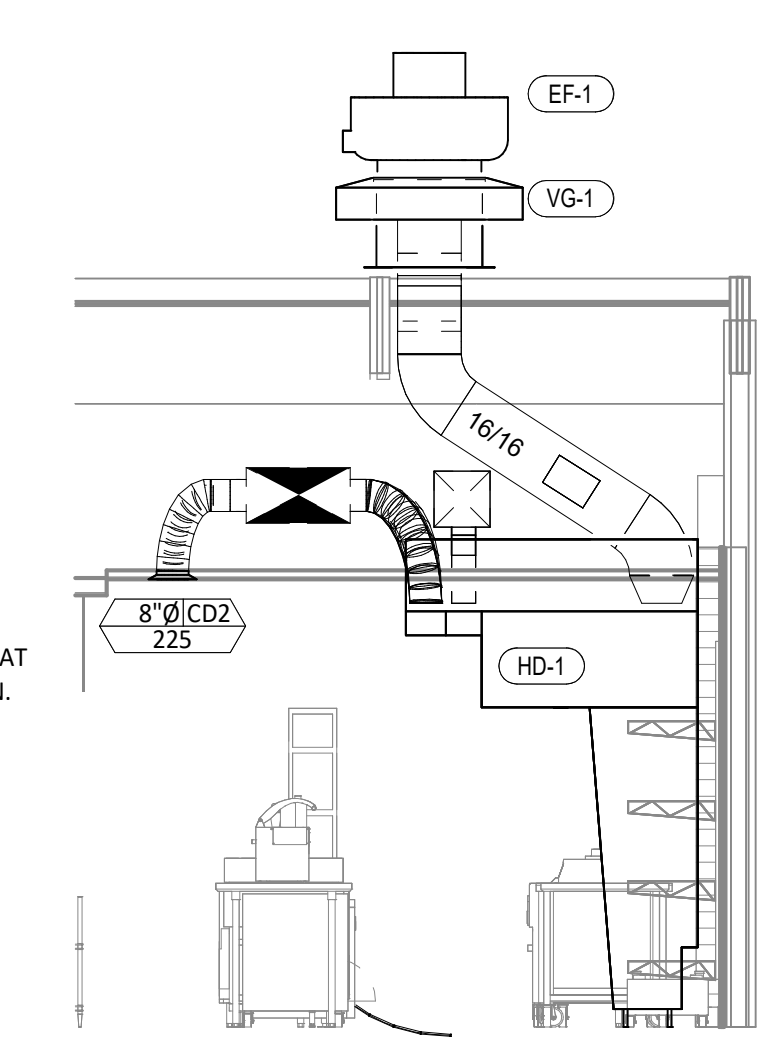
ACCESSIBLE GREASE DUCT CLEANOUTS SHALL BE UL-LISTED DUCTMATE PREINSULATED CLEANOUT DOORS MODEL DW120ULWSBI. CLEANOUTS SHALL BE FURNISHED BY TENANT. COORDINATE NUMBER AND SIZE REQUIRED WITH ENVIORMATIC. ACCESS PANEL SHALL INCLUDE SIGN STATING "ACCESS PANEL - DO NOT OBSTRUCT".



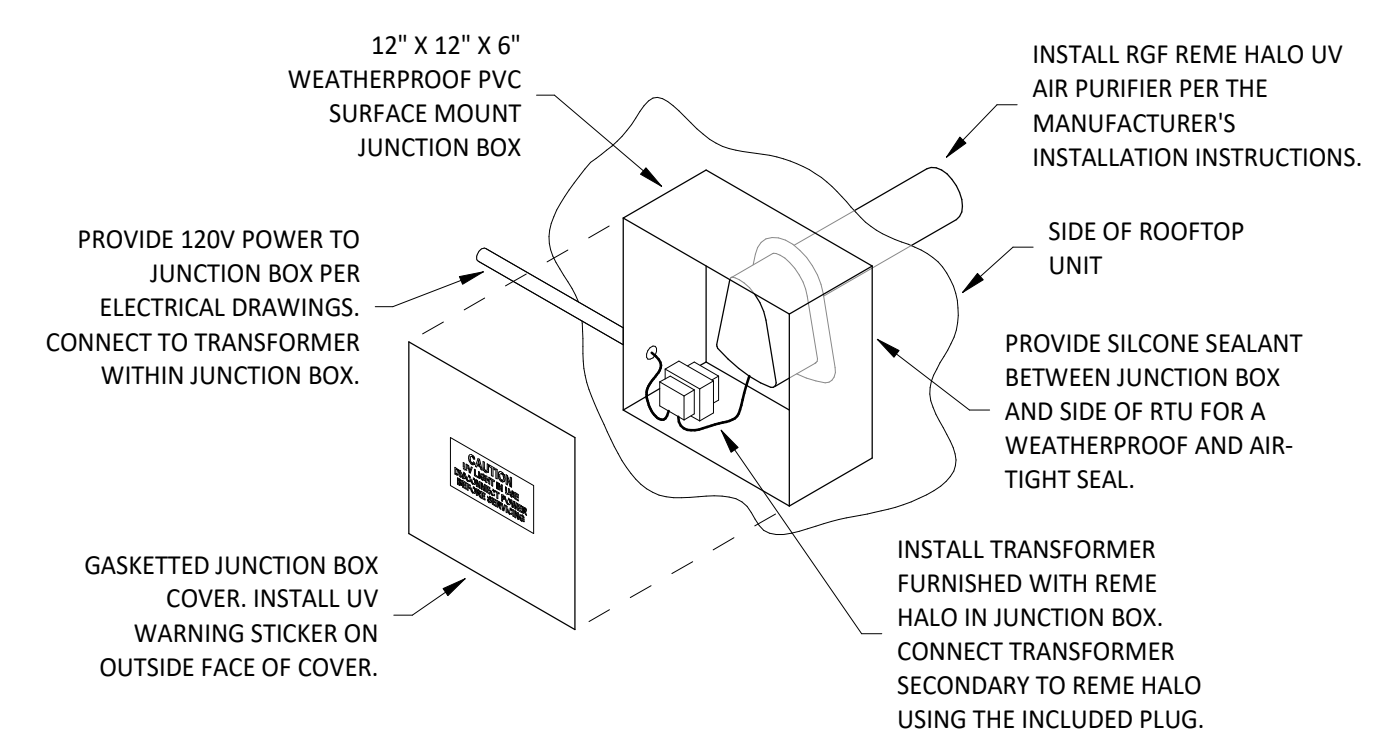
9 HOOD EXHAUST ISOMETRIC
NOT TO SCALE



8 HOOD ELEVATION
1/4" = 1'-0"

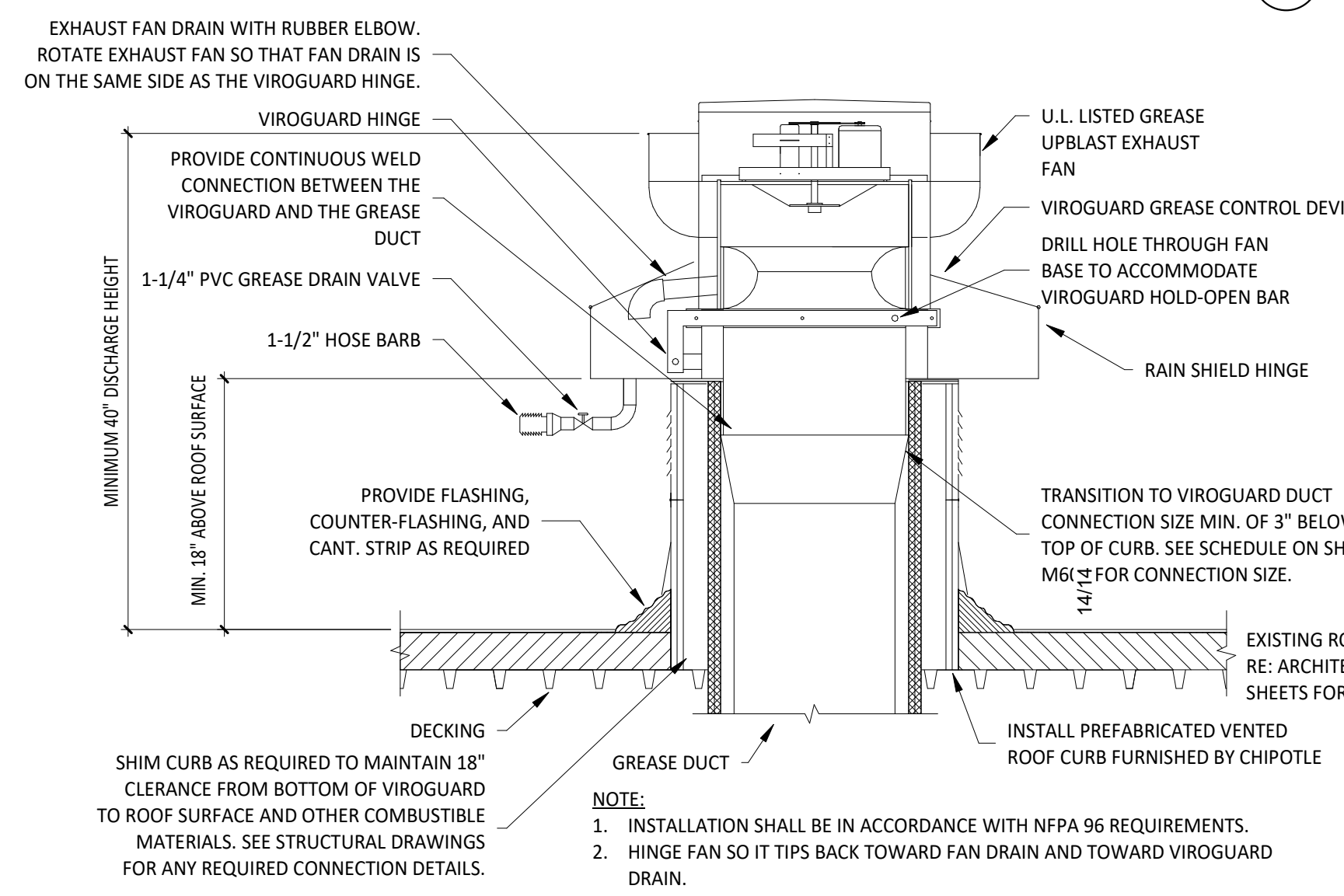


7 DUCT SECTION AT HOOD
1/4" = 1'-0"

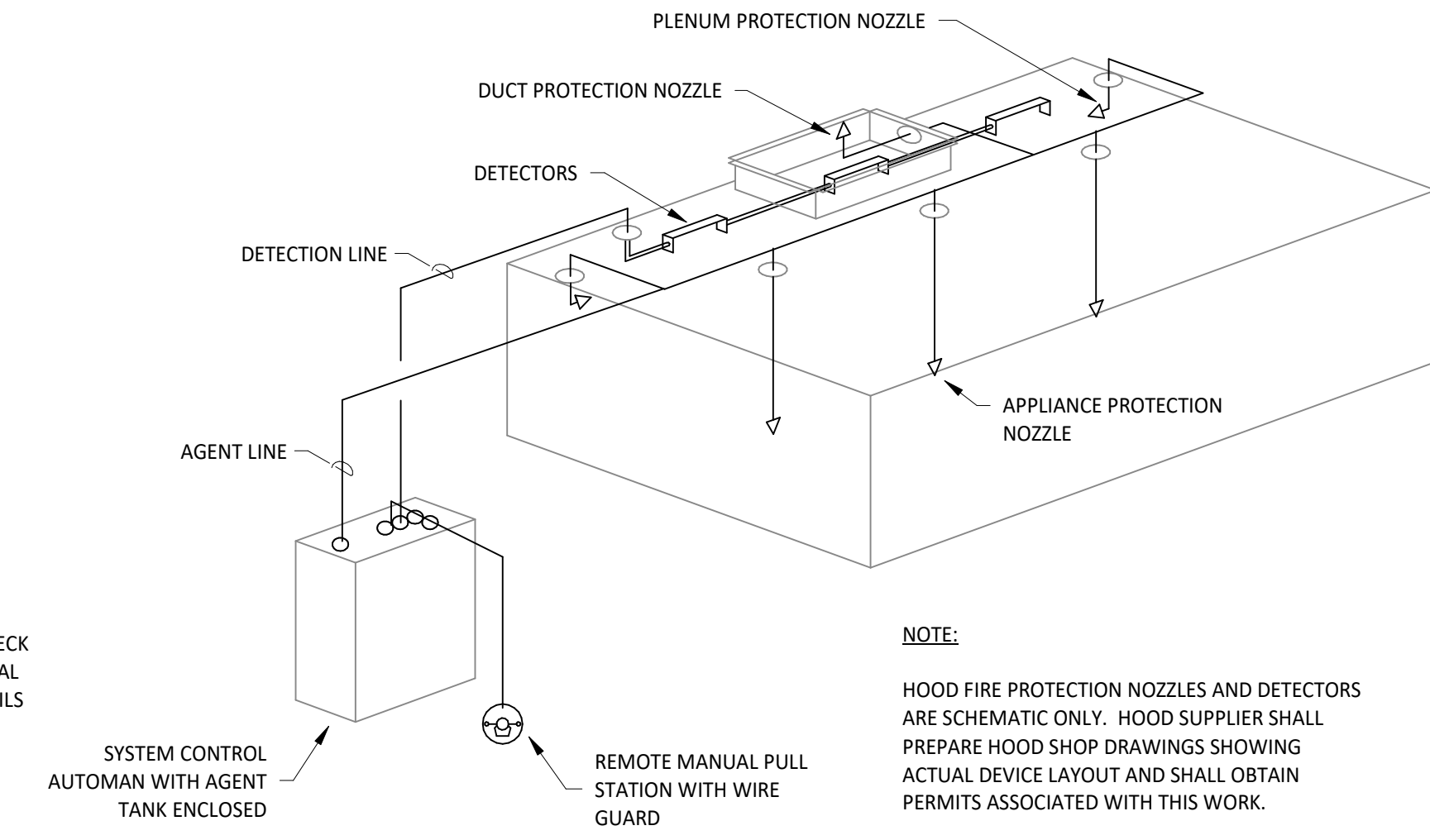


INSTALLATION LOCATION
INSTALL AIR PURIFIER WITH JUNCTION BOX ON OUTSIDE FACE OF ROOFTOP UNIT AND WITH UV LAMP TUBE EXTENDING INTO THE INTERIOR OF THE ROOFTOP UNIT. FIELD VERIFY EXACT LOCATION TO AVOID DAMAGING, TOUCHING, OR INTERFERING WITH ANY RTU INTERIOR COMPONENTS. INSTALLATION LOCATION SHALL BE AS FOLLOWS:
TRANE: INSTALL INTO THE SUPPLY AIR STREAM THROUGH THE REMOVABLE PANEL COVERING THE HORIZONTAL DISCHARGE SUPPLY AIR OPENING.
 YORK: INSTALL INTO THE SUPPLY AIR PLENUM FROM THE BACK SIDE OF THE UNIT JUST ABOVE THE HEAT EXCHANGER.

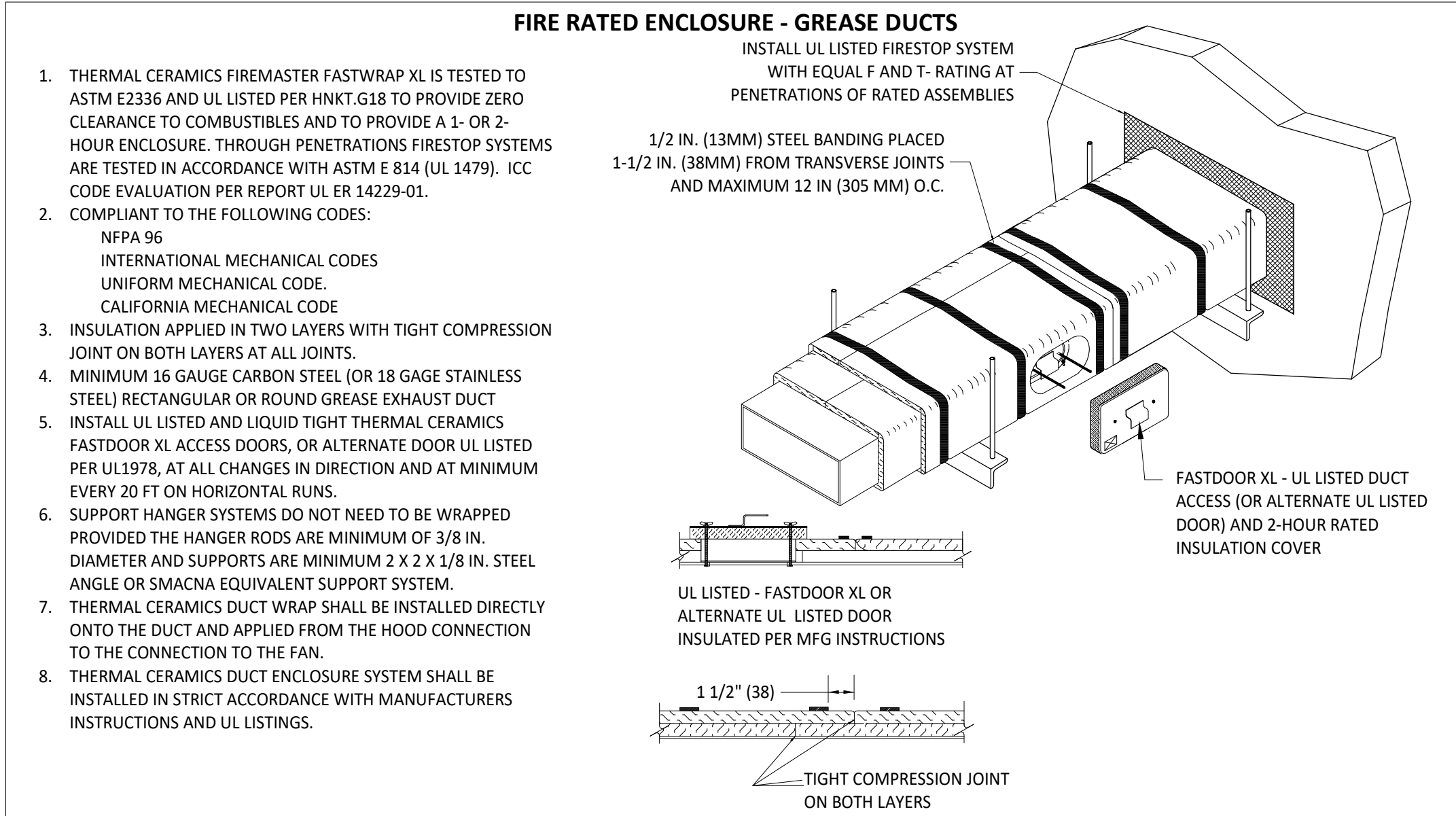
6 UV AIR PURIFIER INSTALLATION
NOT TO SCALE



5 GREASE EXHAUST FAN
NOT TO SCALE

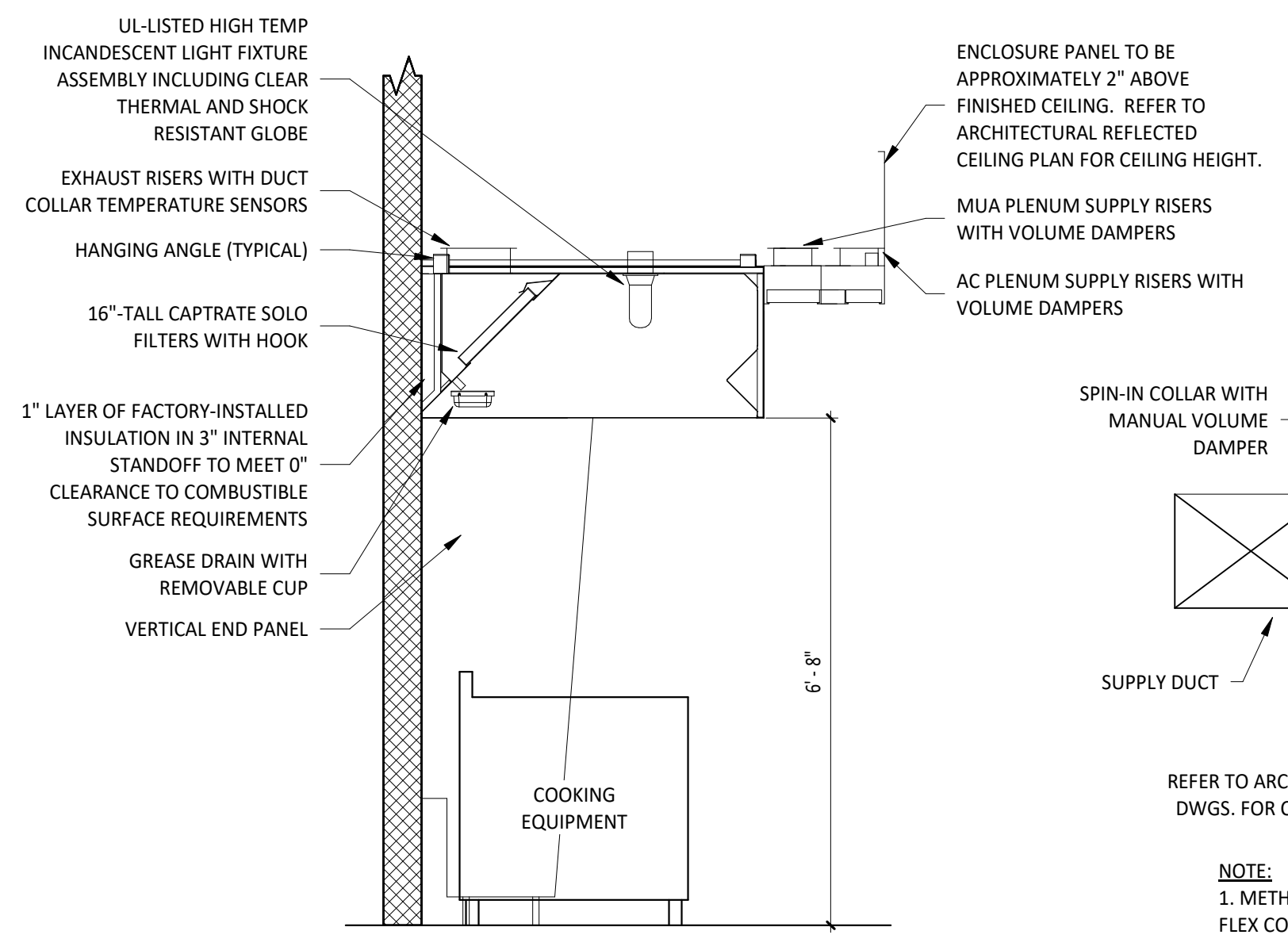


4 FIRE SUPPRESSION SYSTEM SCHEMATIC
NOT TO SCALE

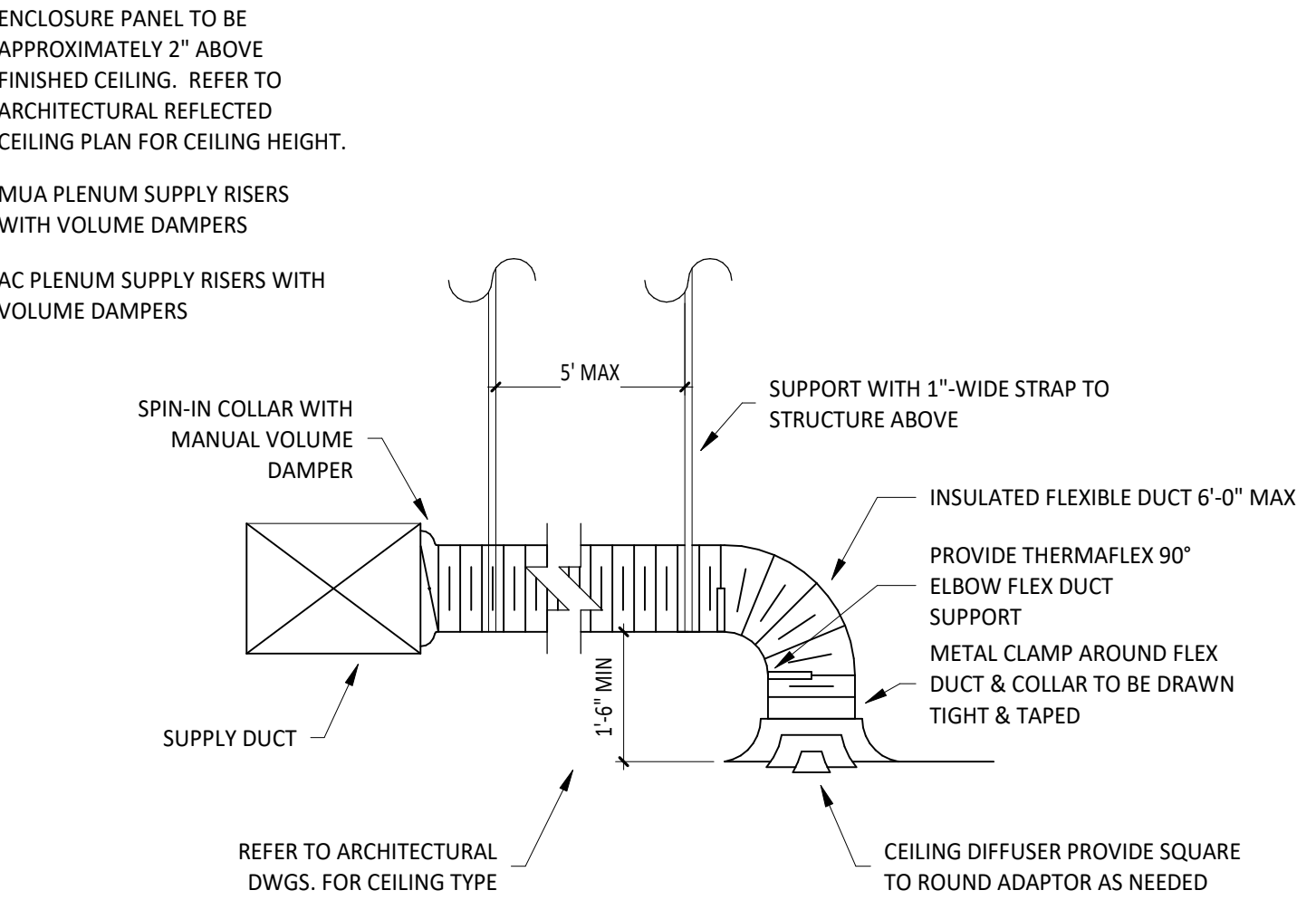


1. THERMAL CERAMICS FIREMASTER FASTWRAP XL IS TESTED TO ASTM E2336 AND UL LISTED PER HNK1.G18 TO PROVIDE ZERO CLEARANCE TO COMBUSTIBLES AND TO PROVIDE A 1- OR 2-HOUR ENCLOSURE. THROUGH PENETRATIONS FIRESTOP SYSTEMS ARE TESTED IN ACCORDANCE WITH ASTM E 814 (UL 1479). ICC CODE EVALUATION PER REPORT UL ER 14229-01.
2. COMPLIANT TO THE FOLLOWING CODES:
NFA 96
INTERNATIONAL MECHANICAL CODES
UNIFORM MECHANICAL CODE
CALIFORNIA MECHANICAL CODE
3. INSULATION APPLIED IN TWO LAYERS WITH TIGHT COMPRESSION JOINT ON BOTH LAYERS AT ALL JOINTS.
4. MINIMUM 16 GAUGE CARBON STEEL (OR 18 GAGE STAINLESS STEEL) RECTANGULAR OR ROUND GREASE EXHAUST DUCT
5. INSTALL UL LISTED AND LIQUID TIGHT THERMAL CERAMICS FASTDOOR XL ACCESS DOORS, OR ALTERNATE DOOR UL LISTED PER UL1978, AT ALL CHANGES IN DIRECTION AND AT MINIMUM EVERY 20 FT ON HORIZONTAL RUNS.
6. SUPPORT HANGER SYSTEMS DO NOT NEED TO BE WRAPPED PROVIDED THE HANGER RODS ARE MINIMUM OF 3/8 IN. DIAMETER AND SUPPORTS ARE MINIMUM 2 X 2 X 1/8 IN. STEEL ANGLE OR SMACNA EQUIVALENT SUPPORT SYSTEM.
7. THERMAL CERAMICS DUCT WRAP SHALL BE INSTALLED DIRECTLY ONTO THE DUCT AND APPLIED FROM THE HOOD CONNECTION TO THE CONNECTION TO THE FAN.
8. THERMAL CERAMICS DUCT ENCLOSURE SYSTEM SHALL BE INSTALLED IN STRICT ACCORDANCE WITH MANUFACTURERS INSTRUCTIONS AND UL LISTINGS.

3 FIREMASTER DUCT WRAP - UL HNK1-G18
NOT TO SCALE



2 HOOD SECTION VIEW
NOT TO SCALE



1 DIFFUSER CONNECTION
NOT TO SCALE



COPYRIGHT 2023
THIS DRAWING IS AN INSTRUMENT OF SERVICE AND AS SUCH REMAINS THE PROPERTY OF CHIPOTLE MEXICAN GRILL, INC.. PERMISSION FOR USE OF THIS DOCUMENT IS LIMITED AND CAN BE EXTENDED ONLY BY WRITTEN AGREEMENT WITH CHIPOTLE MEXICAN GRILL, INC..



CHIPOTLE MEXICAN GRILL, INC.
PO BOX 182566
COLUMBUS, OH 43218-2566
TELEPHONE: 614.318.2400
INTERNET: WWW.CHIPOTLE.COM

STORE NO.: 04-5168
CHRISTIE & SHELLMOUND
5761 CHRISTIE AVENUE
EMERYVILLE, CA 94608

Issue Record:

01/11/2024	PERMIT SET
03/20/2024	ADDENDUM 1
05/01/2024	IFC SET

Revisions:

1	02/16/24	PLAN REVIEW COMMENTS
3	03/20/24	PERMIT REVISIONS

Drawn: PM: CC: Checked:

SF	BE	WS	PD
----	----	----	----

Project No:
230458

Contents:
HVAC DETAILS

