



Rev1

## SUBMITTAL

### Project

NIKE - Hershey, PA - 46

### Date

Monday, April 18, 2022

### **EXCLUSIONS and/or CLARIFICATIONS:**

- Units are out of stock and lead time is 16 - 20 weeks. Lead time is subject to change prior to sale.
- MERV Filters not included
- Programmable Thermostat not included
- Division 23 contractor shall provide smoke detectors in return air duct.
- Fused disconnect provided by Division 26 contractor.
- Low ambient kits included.
- Hail Guards included.
- Electric Heat included.
- Please verify submittal for all units meets required staging and circuiting among other necessary design attributes

*INSTALLING CONTRACTOR IS RESPONSIBLE FOR VERIFYING EQUIPMENT BEING SUPPLIED MATCHES FINAL BID DOCUMENTS and/or REPLACEMENT EQUIPMENT NEEDED FOR STORE (i.e. voltage, size, etc). Carrier will not be responsible for installation and/or removal of any incorrect units. Please report any discrepancies immediately.*

# Table Of Contents

Project: NIKE – Hershey, PA - 46  
Prepared By:

04/22/2022  
11:46AM

<b>SS - 1</b> .....	<b>3</b>
Unit Report .....	4
Performance Summary.....	6
Certified Drawing.....	11
<b>SS - 2 - 4</b> .....	<b>15</b>
Unit Report .....	16
Performance Summary.....	18
Certified Drawing.....	23
<b>SS - 5</b> .....	<b>27</b>
Unit Report .....	28
Performance Summary.....	30
Certified Drawing.....	35
<b>SS - 6</b> .....	<b>39</b>
Unit Report .....	40
Performance Summary.....	42
System Parameters .....	42
Electrical Data .....	42
Certified Drawing.....	43

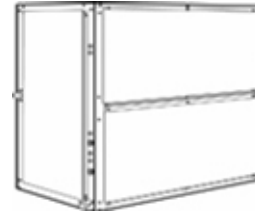
**SS - 1**

**Tag Cover Sheet  
Unit Report  
Performance Report  
Certified Drawing**

## Unit Report For SS - 1

Project: NIKE - Hershey, PA - 46  
Prepared By:

04/22/2022  
11:46AM



### Outdoor Unit Parameters

Unit Quantity: ..... 1  
 Unit Model: ..... **38AUZ**  
 Unit Size: ..... **7.5 Tons**  
 Voltage: ..... **208-3-60** V-Ph-Hz  
 Condenser Coil: **Al/Cu with Louvered Hail Guard**  
 No. of DX Circuits: ..... 1  
 No. of Stages: ..... **Dual Stage**

### System Parameter

System Quantity: ..... 1  
 Refrigerant Type: ..... **PURON**  
 Compressor Quantity: ..... 1  
 Compressor Type: ..... **Scroll**  
 Std. Capacity Steps: ..... **66,100**  
 No. of Outdoor fans: ..... 2

### Outdoor Unit Dimensions and Weight

Unit Length: ..... **4' 11.4"**  
 Unit Width: ..... **3' 9.9"**  
 Unit Height: ..... **3' 6.4"**  
 Unit Shipping Weight: ..... **391** lb  
 Unit Operating Weight: ..... **391** lb

### Indoor Unit Parameters

Unit Model: ..... **40RUA**  
 Unit Size: ..... **7.5 Tons**  
 No. of Coils: ..... 1  
 Voltage: ..... **208-3-60** V-Ph-Hz

### Indoor Unit Dimensions and Weight

Unit Length: ..... **4' 1.0"**  
 Unit Width: ..... **2' 4.2"**  
 Unit Height: ..... **4' 8.1"**  
 Unit Shipping Weight: ..... **404** lb  
 Unit Operating Weight: ..... **404** lb  
 Add Service Clearance for Accy Heater: **.2' 6.0"**

### Warranty Information Outdoor (Note: for US & Canada only)

First Year - Parts Only (Standard)

### Warranty Information Indoor (Note: for US & Canada only)

First Year - Parts Only (Standard)

**NOTE: Please see Warranty Catalog 808-218 for explanation of policies and ordering methods.**

### Ordering Information

Part Number	Description	Quantity
<b>Base Unit - Outdoor</b>		
38AUZE08A0M5-0A1C0		1
	Base Unit	
	Al/Cu with Louvered Hail Guard Condensing Coil	1
	Single Circ, 2 stage w/Low Ambient (07, 08 only) Refrigerant Options	1
	Service Options - Un-Powered Convenience Outlet	1
	Electrical Options - Non-Fused Disconnect	1
	Packaging Options - Standard	1
	Standard Electrical Mechanical Controls	1
	Refrig Circ/Compressor Staging - Single Circ/Dual Stage (size 07 & 08 only)	1
<b>Base Unit - Indoor</b>		

## Unit Report For SS - 1

Project: NIKE - Hershey, PA - 46  
Prepared By:

04/22/2022  
11:46AM

40RUAA08T2A5-0A1A0		1
	Base Unit	
	Std Static, Std Effy Motor/ Medium Drive	1
	Cabinet Paint - Painted	1
	2-Speed Fan Controller (VFD)	1
CAELHEAT010A00	25.0 kW, 240-3-60 Electric Heater	1

The 38AUZ/AUD are furnished with filter drier which is factory provided (field installed). Additional filter driers can be purchased separately through RCD (Replacement Components Division). See the Product Library for Replacement Filter Drier Information for more information.

## Performance Summary For SS - 1

Project: NIKE - Hershey, PA - 46  
 Prepared By:

04/22/2022  
 11:46AM

**System:** ..... **38AUZ008/40RUA008**  
 No. of Stages: ..... **Dual Stage**  
 System Quantity: ..... **1**  
 Altitude: ..... **0.0** ft  
 EER @ ARI Conditions: ..... **11.2**  
 IEER: ..... **14.0**  
 Suction Line Loss: ..... **1.4** °F  
 System meets ASHRAE 90.1-2016 min IEER requirement.

**This system has a combined part load efficiency (IEER) that meets or exceeds the US DOE 2018 minimum cooling efficiency standards.**

### Typical Liquid and Suction Line Sizing

Pipe Length	Liquid Line Size	Suction Line Size
0 - 25	1/2	7/8
26 - 50	5/8	1 1/8
51 - 75	5/8	1 1/8
76 - 100	5/8	1 1/8
101 - 125	5/8	1 3/8
126 - 150	5/8	1 3/8
151 - 175	5/8	1 3/8
176 - 200	5/8	1 3/8

**Refer to the 38AU installation instructions for installation specific line sizing guidance**

### Outdoor Unit Parameters

Unit Quantity: **1**  
 PartNumber: **38AUZE08A0M5-0A1C0**  
 Unit Model: **38AUZ**  
 Unit Size: **7.5 Tons**  
 Condenser Coil: **Al/Cu with Louvered Hail Guard**  
 No. of DX Circuits: **1**  
 Voltage: **208-3-60** V-Ph-Hz  
 Clg Ent Air DB: **100.0** °F

### Outdoor Electrical Data on Units produced after 07/14/2019

Unit Voltage: **208-3-60** V-Ph-Hz  
 Unit MCA: **37.0** Amps  
 Unit MOCP: **60.0** Amps  
 Total Compressor Power of Unit: **NA**  
 Voltage Range Min: **187** V  
 Voltage Range Max: **253** V  
 Compressor RLA: **26.8**  
 Compressor LRA: **164**  
 Compressor Quantity: **1**  
 Fan Motors Qty: **2**  
 Fan Motor FLA: **1.5** Amps  
 Notice: Outdoor unit elect. data is based on 208-3-60  
 Control Panel SCCR: 5kA RMS at Rated Symmetrical Voltage  
 \*Single Circuit, Two-Stage Compressor Option

### Outdoor Electrical Data on Units produced prior to 07/14/2019

Unit MCA: **33.0** Amps  
 Unit MOCP: **50.0** Amps  
 Compressor RLA: **24**  
 Compressor LRA: **186**

### Indoor Unit Parameters

PartNumber: **40RUA08T2A5-0A1A0**

## Performance Summary For SS - 1

Project: NIKE - Hershey, PA - 46  
 Prepared By:

04/22/2022  
 11:46AM

Unit Model: **40RUA**  
 Unit Size: **7.5 Tons**  
 Coil Rows: **4**  
 No. of Splits: **1**  
 Voltage: **208-3-60** V-Ph-Hz  
 Actual Airflow: **2650.0** CFM  
 Standard Airflow: **2650.0** CFM  
 Total Clg Cap.(Gross): **87.3** MBH  
 Sensible Clg Cap.(Gross): **70.4** MBH  
 Ent Air DB: **77.6** °F  
 Ent Air WB: **63.7** °F  
 Ent Enthalpy: **28.92** BTU/lb  
 Lvg Air DB: **53.0** °F  
 Lvg Air WB: **52.4** °F  
 Lvg Enthalpy: **21.60** BTU/lb  
 Coil Bypass Factor: **NA**

### Accessory Heating

Heating Type: **Electric**  
 Acc Htg Capacity: **64.15** MBH  
 Acc Htg Ent. Air Temp: **60.0** °F  
 Acc Htg Lvg. Air Temp: **82.4** °F  
 Acc Heater Nominal Voltage: **208-3-60**  
 Acc Heater Nominal kW: **25.0** kW  
 Acc Heater Actual Voltage: **208-3-60**  
 Acc Heater FLA: **52.1** amps  
 Acc Stage 1 Actual kW: **11.3** kW  
 Acc Stage 2 Actual kW: **7.5** kW

### Indoor Supply Fan

\*\*\*Using 2-Speed Fan Controller (VFD)  
 Indoor Unit External Static: **1.00** in wg  
 Economizer Loss: **0.00** in wg  
 Grille Loss: **0.00** in wg  
 Plenum Loss: **0.00** in wg  
 Acc. Heating Loss: **0.08** in wg  
 Total Ext Static: **1.08** in wg  
 Fan Speed: **862** RPM  
 Fan Power: **1.27** BHP  
 Fan Motor Max: **2.40** BHP  
 Fan Motor FLA: **7.1** Amps  
 Motor and Medium Static Drive Required.  
 Selected Medium Static Drive Range: 733 - 949 RPM

### Indoor Electrical Data

Unit Voltage: **208-3-60** V-Ph-Hz  
 Unit MCA: **74.0** Amps  
 Unit MOCP: **80.0** Amps  
 Notice: Indoor unit elect. data is based on 208-3-60

### Acoustics

Sound Power Levels, db re 10E-12 Watts

A-Weighted	Outdoor Unit (dB)	Indoor Unit (dB,Ducted)
Total Level	84.6	88.4
63Hz	63.1	69.1
125Hz	68.9	75.2
250Hz	73.4	78.7
500Hz	79.5	83.1
1000Hz	80.2	82.3

## Performance Summary For SS - 1

Project: NIKE - Hershey, PA - 46  
Prepared By:

04/22/2022  
11:46AM

2000Hz	76.4	81.5
4000Hz	72.0	77.3
8000Hz	64.9	NA
Sound Message	Sound for AUZ008	Sound for RUA008

### Acoustic Notes:

1. 38AUZ/D/Q units sound ratings are in accordance with AHRI 270-2008 - Sound Rating of Outdoor Unitary Equipment.
2. 40RU units sound ratings are in accordance with AHSRAE 1987 HVAC Systems and Applications handbook.
3. The acoustic center of the unit is located at the geometric center of the unit.

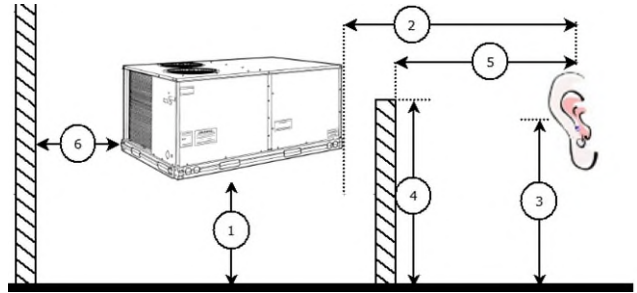
## Performance Summary For SS - 1

Project: NIKE - Hershey, PA - 46  
Prepared By:

04/22/2022  
11:46AM

### Advanced Acoustics Parameters

- 1. Unit height above ground: ..... **1.0** ft
- 2. Horizontal distance from unit to receiver: ..... **20.0** ft
- 3. Receiver height above ground: ..... **5.7** ft
- 4. Height of obstruction: ..... **0.0** ft
- 5. Horizontal dist. from obstruction to receiver: ..... **0.0** ft
- 6. Horizontal dist. from unit to obstruction: ..... **0.0** ft



### Detailed Acoustics Information

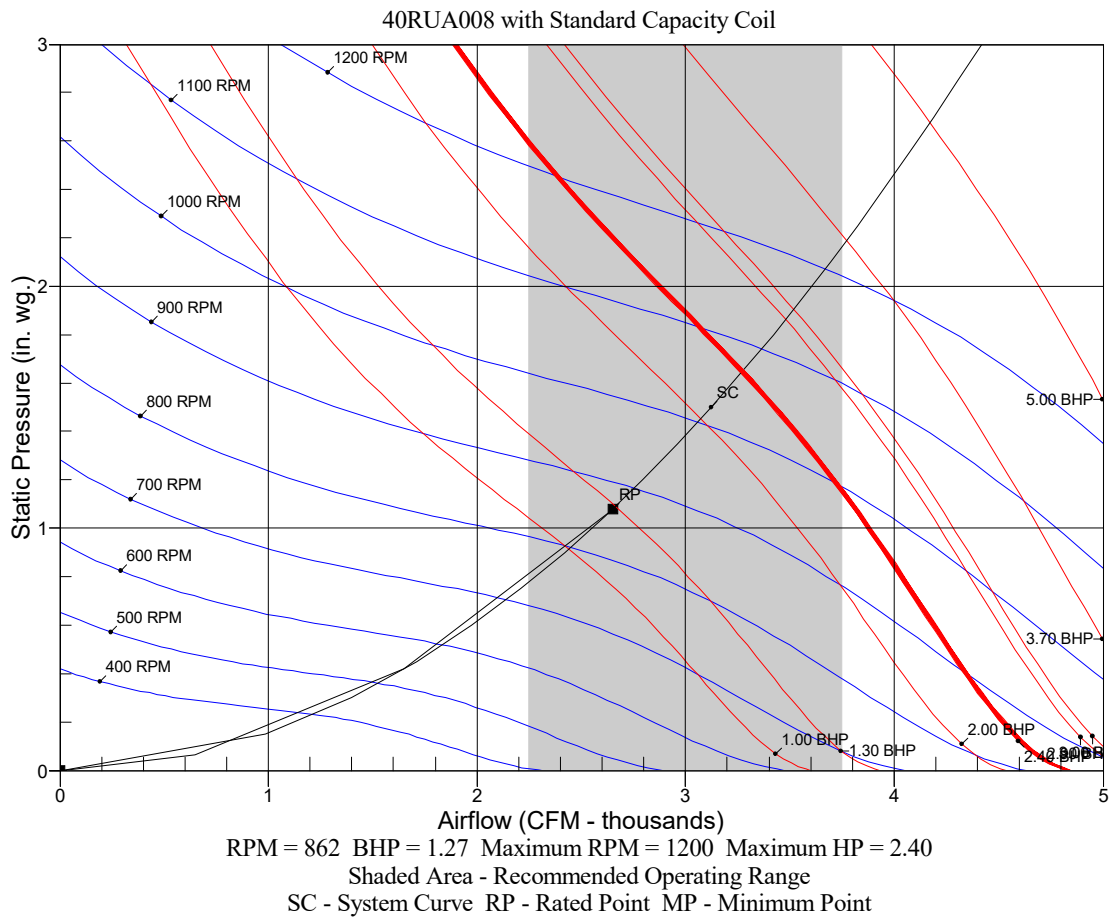
Octave Band Center Frequency, Hz	63	125	250	500	1k	2k	4k	8k	Overall
Sound Power Levels at Unit's Acoustic Center (L <sub>w</sub> ), dB	89	85	82	83	80	75	71	66	92
A-Wgtd Sound Power Levels at Unit's Acoustic Center (L <sub>wA</sub> ), dBA	63	69	73	80	80	76	72	65	85
Sound Press. Levels at Dist. Specified above (L <sub>p</sub> ), dB	65	61	58	58	56	51	47	42	68
A-Wgtd Sound Press. Levels at Dist. Specified above (L <sub>pA</sub> ), dBA	39	45	49	55	56	52	48	41	60

Calculation methods used in this program are patterned after the ASHRAE Guide; other ASHRAE Publications and the AHRI Acoustical Standards. While a very significant effort has been made to insure the technical accuracy of this program, it is assumed that the user is knowledgeable in the art of system sound estimation and is aware of the tolerances involved in real world acoustical estimation. This program makes certain assumptions as to the dominant sound sources and sound paths which may not always be appropriate to the real system being estimated. Because of this, no assurances can be offered that this software will always generate an accurate sound prediction from user supplied input data. If in doubt about the estimation of expected sound levels in a space, an Acoustical Engineer or a person with sound prediction expertise should be consulted.

# Performance Summary For SS - 1

Project: NIKE - Hershey, PA - 46  
Prepared By:

04/22/2022  
11:46AM



# Certified Drawing for SS - 1

Project: NIKE - Hershey, PA - 46  
Prepared By:

04/22/2022  
11:46AM

	UNITED TECHNOLOGIES SYRACUSE, NY CARRIER 13221	P.O. BOX 4800 AND IS DELIVERED UPON THE EXPRESS CONDITION THAT THE CONTENTS WILL NOT BE DISCLOSED OR USED WITHOUT CARRIER CORPORATION'S WRITTEN CONSENT.	THIS DOCUMENT IS THE PROPERTY OF CARRIER CORPORATION AND IS DELIVERED UPON THE EXPRESS CONDITION THAT THE CONTENTS WILL NOT BE DISCLOSED OR USED WITHOUT CARRIER CORPORATION'S WRITTEN CONSENT.
---	---	---	---

UNIT	ELECTRICAL CHARACTERISTICS	STD. UNIT WT.		CORNER A		CORNER B		CORNER C		CORNER D		CENTER OF GRAVITY			UNIT HEIGHT				
		LBS.	KG.	LBS.	KG.	LBS.	KG.	LBS.	KG.	LBS.	KG.	X	Y	Z		H			
38AUZ-07 (MCHK)	208/230-3-60,460-3-60,575-3-60	328	149	128	58	68	31	62	28	70	32	21	[533.4]	19	[482.6]	13	[330.2]	42-3/8	[1076.0]
38AUZ-08 (MCHK)	208/230-3-60,460-3-60,575-3-60	353	160	138	63	72	33	65	29	78	35	19	[482.6]	23	[584.2]	13	[330.2]	42-3/8	[1076.0]
38AUZ-12 (MCHK)	208/230-3-60,460-3-60,575-3-60	418	190	165	75	85	39	78	35	90	41	23	[584.2]	20	[508.0]	15	[381.0]	50-3/8	[1279.2]
38AUZ-14 (MCHK)	208/230-3-60,460-3-60,575-3-60	431	196	162	73	82	37	92	42	95	43	19	[482.6]	23	[584.2]	15	[381.0]	50-3/8	[1279.2]
38AUD-12 (MCHK)	208/230-3-60,460-3-60,575-3-60	499	226	193	88	111	50	72	38	123	56	20	[508.0]	23	[584.2]	15	[381.0]	50-3/8	[1279.2]
38AUD-14 (MCHK)	208/230-3-60,460-3-60,575-3-60	505	229	190	86	88	40	76	34	151	68	20	[508.0]	24	[609.6]	15	[381.0]	50-3/8	[1279.2]
38AUZ-07 (RTPF)	208/230-3-60,460-3-60,575-3-60	389	176	141	64	96	44	62	28	91	41	18	[457.2]	24	[609.6]	21	[533.4]	42-3/8	[1076.0]
38AUZ(A,B)08 (RTPF)	208/230-3-60,460-3-60,575-3-60	391	177	142	64	96	44	62	28	91	41	18	[457.2]	24	[609.6]	21	[533.4]	42-3/8	[1076.0]
38AUZ(D,E)08 (RTPF)	208/230-3-60,460-3-60,575-3-60	430	195	142	64	96	44	76	34	111	50	18	[457.2]	24	[609.6]	21	[533.4]	42-3/8	[1076.0]
38AUZ-12 (RTPF)	208/230-3-60,460-3-60,575-3-60	490	222	177	80	120	54	78	35	114	52	18	[457.2]	24	[609.6]	24	[609.6]	50-3/8	[1279.2]
38AUZ-14 (RTPF)	208/230-3-60,460-3-60,575-3-60	598	271	195	88	142	64	110	50	151	68	20	[508.0]	25	[635.0]	24	[609.6]	50-3/8	[1279.2]
38AUD-12 (RTPF)	208/230-3-60,460-3-60,575-3-60	516	234	185	84	117	53	83	38	131	59	19	[482.6]	23	[584.2]	24	[609.6]	50-3/8	[1279.2]
38AUD-14 (RTPF)	208/230-3-60,460-3-60,575-3-60	654	297	214	97	155	70	120	54	165	75	20	[508.0]	25	[635.0]	24	[609.6]	50-3/8	[1279.2]
38AUQ-07	208/230-3-60,460-3-60,575-3-60	444	201	134	61	97	44	90	41	123	56	22	[558.0]	25	[635.0]	13	[330.2]	42-3/8	[1076.0]
38AUQ(A,B)08	208/230-3-60,460-3-60,575-3-60	483	219	162	74	110	50	85	39	125	57	20	[508.0]	24	[609.6]	21	[533.4]	42-3/8	[1076.0]
38AUQ(D,E)08	208/230-3-60,460-3-60,575-3-60	523	237	174	79	118	54	96	44	135	61	21	[533.4]	24	[609.6]	23	[584.2]	50-3/8	[1279.2]
38AUQ-12	208/230-3-60,460-3-60,575-3-60	575	261	186	84	126	57	106	48	157	71	21	[533.4]	24	[609.6]	23	[584.2]	50-3/8	[1279.2]

**NOTES:**

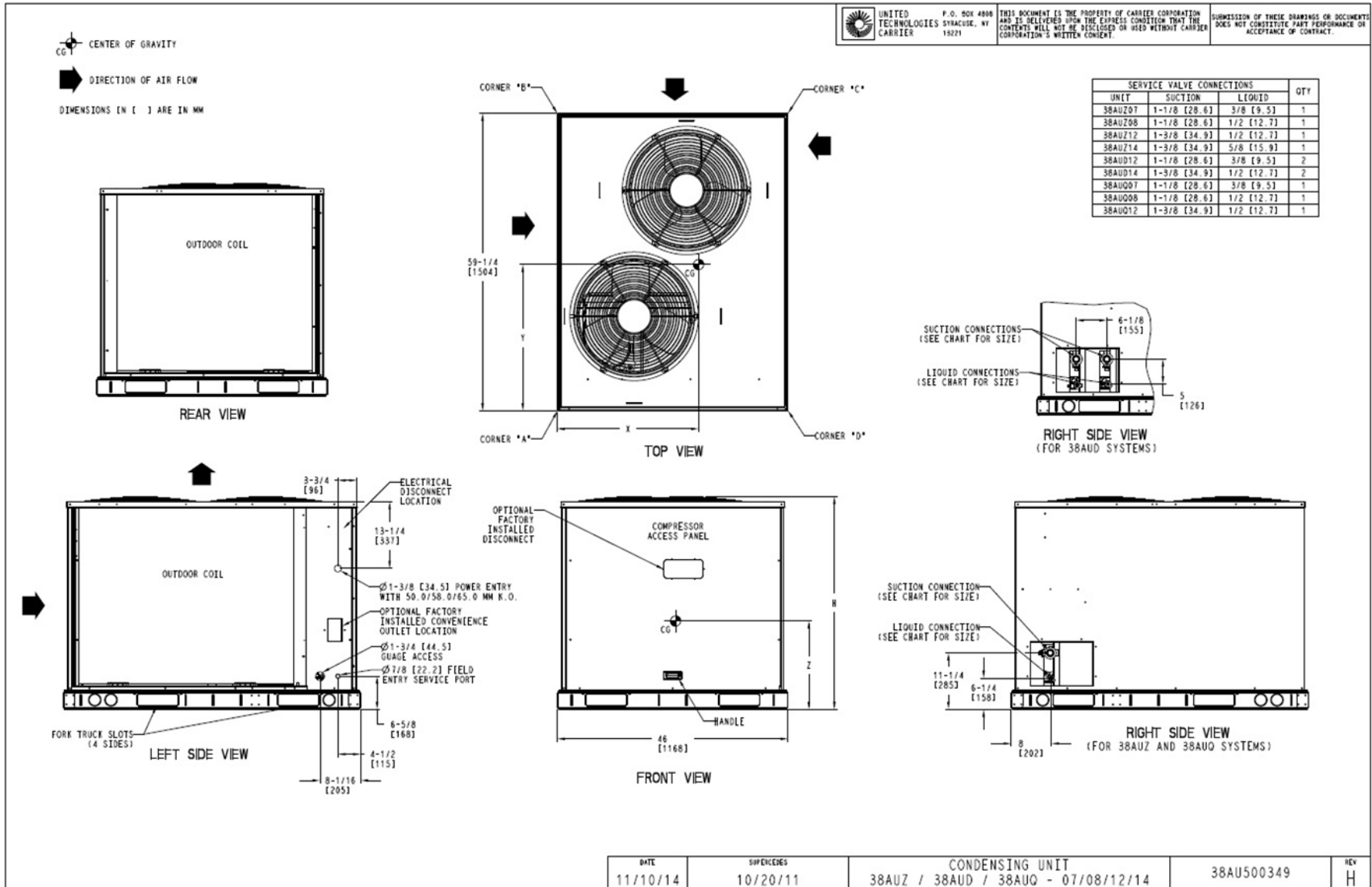
1. MINIMUM CLEARANCE (LOCAL CODES OR JURISDICTION MAY PREVAIL):
  - A. BOTTOM TO COMBUSTIBLE SURFACES: 0 INCHES.
  - B. OUTDOOR COIL, FOR PROPER AIR FLOW: 36 INCHES ONE SIDE, 12 INCHES THE OTHER. THE SIDE GETTING THE GREATER CLEARANCE IS OPTIONAL. STANDARD CLEARANCES ON REMAINING TWO SIDES.
  - C. OVERHEAD: 60 INCHES, TO ASSURE PROPER OUTDOOR FAN OPERATION.
  - D. BETWEEN UNITS: CONTROL BOX SIDE, 42 INCHES PER NEC.
  - E. BETWEEN UNIT AND UNGROUNDED SURFACES: CONTROL BOX SIDE, 36 INCHES PER NEC.
  - F. BETWEEN UNIT AND BLOCK OR CONCRETE WALLS AND OTHER GROUNDED SURFACES: CONTROL BOX SIDE, 42 INCHES PER NEC.
2. WITH EXCEPTION OF THE CLEARANCE FOR THE OUTDOOR COIL AS STATED IN NOTE 1B, A REMOVABLE FENCE OR BARRICADE REQUIRES NO CLEARANCE.
3. UNITS MAY BE INSTALLED ON COMBUSTIBLE FLOORS MADE FROM WOOD OR CLASS A, B OR C ROOF COVERING MATERIAL.

DATE	SUPERCEDES	CONDENSING UNIT	REV
11/10/14	10/20/11	38AUZ / 38AUD / 38AUQ - 07/08/12/14	38AU500349 H

# Certified Drawing for SS - 1

Project: NIKE - Hershey, PA - 46  
 Prepared By:

04/22/2022  
 11:46AM



# Certified Drawing for SS - 1

Project: NIKE - Hershey, PA - 46  
Prepared By:

04/22/2022  
11:46AM

UNIT	UNIT WEIGHT (W/TXV)
40RUA-07	399 lbs (181 kg)
40RUA-08	404 lbs (183 kg)
40RUA-12	425 lbs (193 kg)
40RUO-07	381 lbs (173 kg)
40RUO-08	385 lbs (175 kg)
40RUO-12	427 lbs (194 kg)
40RUS-08	390 lbs (177 kg)
40RUS-10	391 lbs (177 kg)
40RUS-12	391 lbs (177 kg)



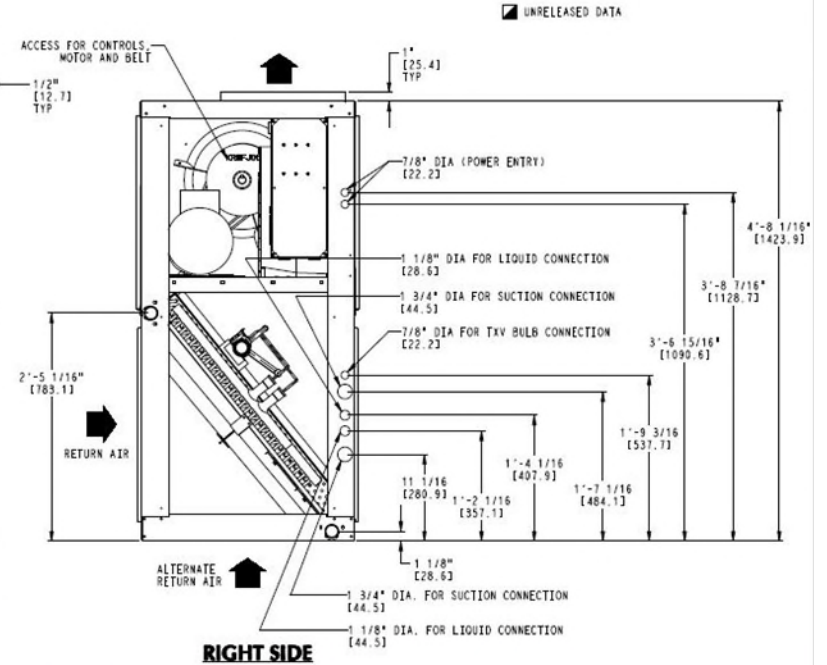
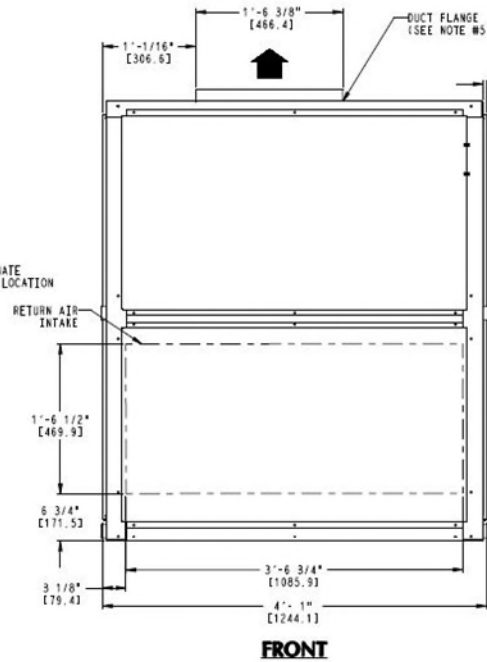
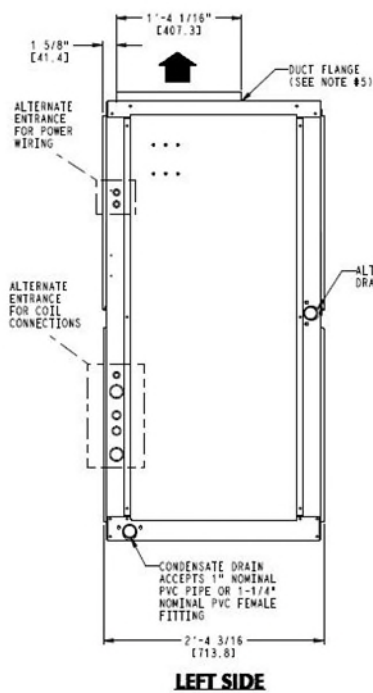
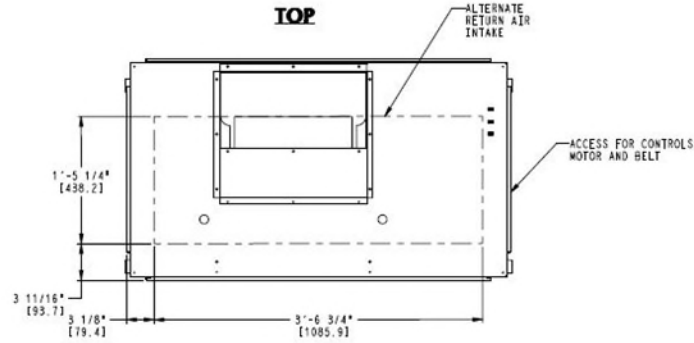
THIS DOCUMENT IS THE PROPERTY OF CARRIER CORPORATION AND IS DELIVERED UPON THE EXPRESS CONDITION THAT THE CONTENTS WILL NOT BE DISCLOSED OR USED WITHOUT CARRIER CORPORATION'S WRITTEN CONSENT.

SUBMISSION OF THESE DRAWINGS OR DOCUMENTS DOES NOT CONSTITUTE PART PERFORMANCE OR ACCEPTANCE OF CONTRACT.

- NOTES:
- DIMENSIONS IN ( ) ARE IN MILLIMETERS.
  - DIRECTIONS OF AIRFLOW.
  - RECOMMENDED CLEARANCE:  
REAR: 2 ft 6 in. [762 mm]  
FRONT: 2 ft 6 in. [762 mm]  
RIGHT SIDE: 2 ft 6 in. [762 mm]  
LEFT SIDE: 2 ft 6 in. [762 mm]  
LOCAL CODES OR JURISDICTION MAY PREVAIL.
  - LIQUID PIPING NOT SUPPLIED BY CARRIER.
  - DUCT FLANGE IS FACTORY SUPPLIED AND FIELD INSTALLED.

ACCESSORY	SEE DRAWING
DISCHARGE PLENUM	40RWS00996
ECONOMIZER	40RWS00999
STEAM COIL	40RWS00999
HOT WATER COIL	40RWS00999
RETURN AIR GRILLE	40RWS00996
OVERHEAD SUSPENSION	40RWS00996
SUBBASE	40RWS00996
ELECTRIC HEAT	40RWS01002

UNRELEASED DATA



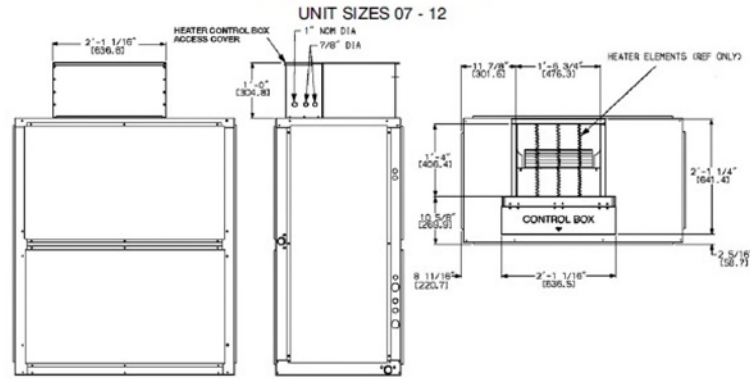
ITC CLASSIFICATION	SHEET	DATE	SUPERCEDES	FAN COIL UNITS	REV
U.S. ECCN: NSR	1 OF 2	05/27/21	01/23/12	40RU A / Q / S - 07 / 08 / 10 / 12	G

# Certified Drawing for SS - 1

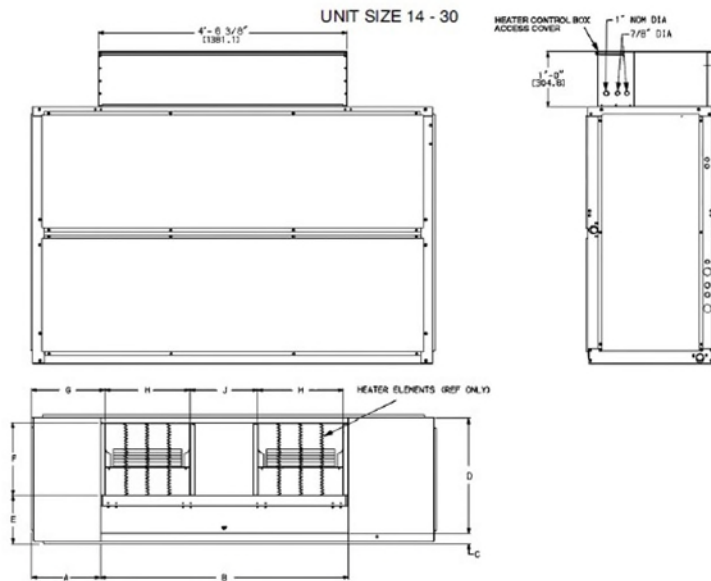
Project: NIKE - Hershey, PA - 46  
 Prepared By:

04/22/2022  
 11:46AM

## ELECTRIC HEAT ACCESSORY



40RU



C160006

40RU UNIT SIZE	A	B	C	D	E	F	G	H	J
14 - 25	1'-3 <sup>1</sup> / <sub>4</sub> " [387.4]	4'-6 <sup>3</sup> / <sub>8</sub> " [1381.1]	2 <sup>5</sup> / <sub>16</sub> " [58.7]	2'-1 <sup>1</sup> / <sub>4</sub> " [641.4]	10 <sup>3</sup> / <sub>16</sub> " [269.3]	1'-4" [406.4]	1'-4 <sup>5</sup> / <sub>16</sub> " [414.3]	1'-6 <sup>3</sup> / <sub>4</sub> " [476.3]	1'-7 <sup>1</sup> / <sub>8</sub> " [327.0]
28, 30	1'-3 <sup>3</sup> / <sub>8</sub> " [390.5]	5'-4 <sup>7</sup> / <sub>8</sub> " [1636.8]	2 <sup>1</sup> / <sub>16</sub> " [52.4]	2'-6 <sup>3</sup> / <sub>16</sub> " [766.8]	1'-1 <sup>1</sup> / <sub>4</sub> " [311.2]	1'-7" [482.6]	1'-4 <sup>5</sup> / <sub>16</sub> " [414.3]	1'-10" [558.8]	1'-4 <sup>7</sup> / <sub>8</sub> " [417.1]

NOTE: Dimensions in [ ] are millimeters.

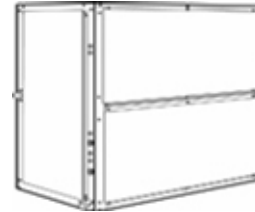
**SS - 2 - 4**

**Tag Cover Sheet  
Unit Report  
Performance Report  
Certified Drawing**

## Unit Report For SS - 2 - 4

Project: NIKE - Hershey, PA - 46  
Prepared By:

04/22/2022  
11:46AM



### Outdoor Unit Parameters

Unit Quantity: ..... 1  
 Unit Model: ..... 38AUZ  
 Unit Size: ..... 6 Tons  
 Voltage: ..... 208-3-60 V-Ph-Hz  
 Condenser Coil: **Al/Cu with Louvered Hail Guard**  
 No. of DX Circuits: ..... 1  
 No. of Stages: ..... **Dual Stage**

### System Parameter

System Quantity: ..... 3  
 Refrigerant Type: ..... **PURON**  
 Compressor Quantity: ..... 1  
 Compressor Type: ..... **Scroll**  
 Std. Capacity Steps: ..... 100  
 No. of Outdoor fans: ..... 2

### Outdoor Unit Dimensions and Weight

Unit Length: ..... **4' 11.4"**  
 Unit Width: ..... **3' 9.9"**  
 Unit Height: ..... **3' 6.4"**  
 Unit Shipping Weight: ..... **389** lb  
 Unit Operating Weight: ..... **389** lb

### Indoor Unit Parameters

Unit Model: ..... **40RUA**  
 Unit Size: ..... **6 Tons**  
 No. of Coils: ..... 1  
 Voltage: ..... **208-3-60** V-Ph-Hz

### Indoor Unit Dimensions and Weight

Unit Length: ..... **4' 1.0"**  
 Unit Width: ..... **2' 4.2"**  
 Unit Height: ..... **4' 8.1"**  
 Unit Shipping Weight: ..... **399** lb  
 Unit Operating Weight: ..... **399** lb  
 Add Service Clearance for Accy Heater: **.2' 6.0"**

### Warranty Information Outdoor (Note: for US & Canada only)

First Year - Parts Only (Standard)

### Warranty Information Indoor (Note: for US & Canada only)

First Year - Parts Only (Standard)

**NOTE: Please see Warranty Catalog 808-218 for explanation of policies and ordering methods.**

### Ordering Information

Part Number	Description	Quantity
<b>Base Unit - Outdoor</b>		
38AUZE07A0M5-0A1C0		3
	Base Unit	
	Al/Cu with Louvered Hail Guard Condensing Coil	3
	Single Circ, 2 stage w/Low Ambient (07, 08 only) Refrigerant Options	3
	Service Options - Un-Powered Convenience Outlet	3
	Electrical Options - Non-Fused Disconnect	3
	Packaging Options - Standard	3
	Standard Electrical Mechanical Controls	3
	Refrig Circ/Compressor Staging - Single Circ/Dual Stage (size 07 & 08 only)	3
<b>Base Unit - Indoor</b>		

## Unit Report For SS - 2 - 4

Project: NIKE - Hershey, PA - 46  
Prepared By:

04/22/2022  
11:46AM

40RUAA07T2A5-0A1A0		3
	Base Unit	
	Std Static, Std Effy Motor/ Medium Drive	3
	Cabinet Paint - Painted	3
	2-Speed Fan Controller (VFD)	3
CAELHEAT010A00	25.0 kW, 240-3-60 Electric Heater	3

The 38AUZ/AUD are furnished with filter drier which is factory provided (field installed). Additional filter driers can be purchased separately through RCD (Replacement Components Division). See the Product Library for Replacement Filter Drier Information for more information.

## Performance Summary For SS - 2 - 4

Project: NIKE - Hershey, PA - 46  
 Prepared By:

04/22/2022  
 11:46AM

**System:** ..... **38AUZ007/40RUA007**  
 No. of Stages: ..... **Dual Stage**  
 System Quantity: ..... **3**  
 Altitude: ..... **0.0** ft  
 EER @ ARI Conditions: ..... **12.0**  
 IEER: ..... **14.0**  
 Suction Line Loss: ..... **1.4** °F  
 System meets ASHRAE 90.1-2016 min IEER requirement.

**This system has a combined part load efficiency (IEER) that meets or exceeds the US DOE 2018 minimum cooling efficiency standards.**

### Typical Liquid and Suction Line Sizing

Pipe Length	Liquid Line Size	Suction Line Size
0 - 25	3/8	7/8
26 - 50	1/2	1 1/8
51 - 75	5/8	1 1/8
76 - 100	5/8	1 1/8
101 - 125	5/8	1 1/8
126 - 150	5/8	1 1/8
151 - 175	5/8	1 1/8
176 - 200	5/8	1 1/8

Refer to the 38AU installation instructions for installation specific line sizing guidance

### Outdoor Unit Parameters

Unit Quantity: **1**  
 PartNumber: **38AUZE07A0M5-0A1C0**  
 Unit Model: **38AUZ**  
 Unit Size: **6 Tons**  
 Condenser Coil: **Al/Cu with Louvered Hail Guard**  
 No. of DX Circuits: **1**  
 Voltage: **208-3-60** V-Ph-Hz  
 Clg Ent Air DB: **100.0** °F

### Outdoor Electrical Data

Unit Voltage: **208-3-60** V-Ph-Hz  
 Unit MCA: **25.0** Amps  
 Unit MOCP: **30.0** Amps  
 Total Compressor Power of Unit: **NA**  
 Voltage Range Min: **187** V  
 Voltage Range Max: **253** V  
 Compressor RLA: **17.5**  
 Compressor LRA: **136**  
 Compressor Quantity: **1**  
 Fan Motors Qty: **2**  
 Fan Motor FLA: **1.5** Amps  
 Notice: Outdoor unit elect. data is based on 208-3-60  
 Control Panel SCCR: 5kA RMS at Rated Symmetrical Voltage  
 \*Single Circuit, Two-Stage Compressor Option

### Indoor Unit Parameters

PartNumber: **40RUAA07T2A5-0A1A0**  
 Unit Model: **40RUA**  
 Unit Size: **6 Tons**  
 Coil Rows: **4**  
 No. of Splits: **1**  
 Voltage: **208-3-60** V-Ph-Hz  
 Actual Airflow: **2030.0** CFM

## Performance Summary For SS - 2 - 4

Project: NIKE - Hershey, PA - 46  
 Prepared By:

04/22/2022  
 11:46AM

Standard Airflow: **2030.0** CFM  
 Total Clg Cap.(Gross): **69.2** MBH  
 Sensible Clg Cap.(Gross): **50.5** MBH  
 Ent Air DB: **77.9** °F  
 Ent Air WB: **65.9** °F  
 Ent Enthalpy: **30.59** BTU/lb  
 Lvg Air DB: **54.9** °F  
 Lvg Air WB: **54.8** °F  
 Lvg Enthalpy: **23.01** BTU/lb  
 Coil Bypass Factor: **NA**

### Accessory Heating

Heating Type: **Electric**  
 Acc Htg Capacity: **64.15** MBH  
 Acc Htg Ent. Air Temp: **60.0** °F  
 Acc Htg Lvg. Air Temp: **89.3** °F  
 Acc Heater Nominal Voltage: **208-3-60**  
 Acc Heater Nominal kW: **25.0** kW  
 Acc Heater Actual Voltage: **208-3-60**  
 Acc Heater FLA: **52.1** amps  
 Acc Stage 1 Actual kW: **11.3** kW  
 Acc Stage 2 Actual kW: **7.5** kW

### Indoor Supply Fan

\*\*\*Using 2-Speed Fan Controller (VFD)  
 Indoor Unit External Static: **1.00** in wg  
 Economizer Loss: **0.00** in wg  
 Grille Loss: **0.00** in wg  
 Plenum Loss: **0.00** in wg  
 Acc. Heating Loss: **0.05** in wg  
 Total Ext Static: **1.05** in wg  
 Fan Speed: **830** RPM  
 Fan Power: **0.93** BHP  
 Fan Motor Max: **2.40** BHP  
 Fan Motor FLA: **7.1** Amps  
 Motor and Medium Static Drive Required.  
 Selected Medium Static Drive Range: 666 - 863 RPM

### Indoor Electrical Data

Unit Voltage: **208-3-60** V-Ph-Hz  
 Unit MCA: **74.0** Amps  
 Unit MOCP: **80.0** Amps  
 Notice: Indoor unit elect. data is based on 208-3-60

### Acoustics

Sound Power Levels, db re 10E-12 Watts

A-Weighted	Outdoor Unit (dB)	Indoor Unit (dB,Ducted)
Total Level	84.6	86.3
63Hz	63.1	67.0
125Hz	68.9	73.1
250Hz	73.4	76.6
500Hz	79.5	81.0
1000Hz	80.2	80.2
2000Hz	76.4	79.4
4000Hz	72.0	75.2
8000Hz	64.9	NA
Sound Message	Sound for AUZ007	Sound for RUA007

### Acoustic Notes:

## Performance Summary For SS - 2 - 4

Project: NIKE - Hershey, PA - 46  
Prepared By:

04/22/2022  
11:46AM

1. 38AUZ/D/Q units sound ratings are in accordance with AHRI 270-2008 - Sound Rating of Outdoor Unitary Equipment.
2. 40RU units sound ratings are in accordance with AHSRAE 1987 HVAC Systems and Applications handbook.
3. The acoustic center of the unit is located at the geometric center of the unit.

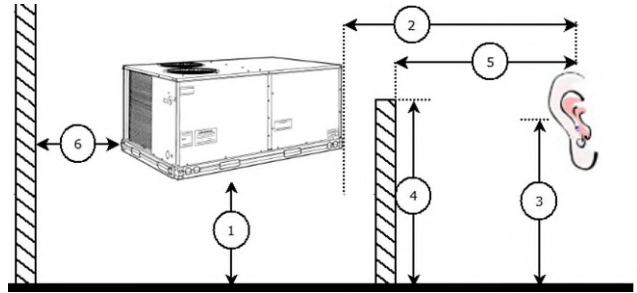
## Performance Summary For SS - 2 - 4

Project: NIKE - Hershey, PA - 46  
 Prepared By:

04/22/2022  
 11:46AM

### Advanced Acoustics Parameters

- 1. Unit height above ground: ..... **1.0** ft
- 2. Horizontal distance from unit to receiver: ..... **20.0** ft
- 3. Receiver height above ground: ..... **5.7** ft
- 4. Height of obstruction: ..... **0.0** ft
- 5. Horizontal dist. from obstruction to receiver: ..... **0.0** ft
- 6. Horizontal dist. from unit to obstruction: ..... **0.0** ft



### Detailed Acoustics Information

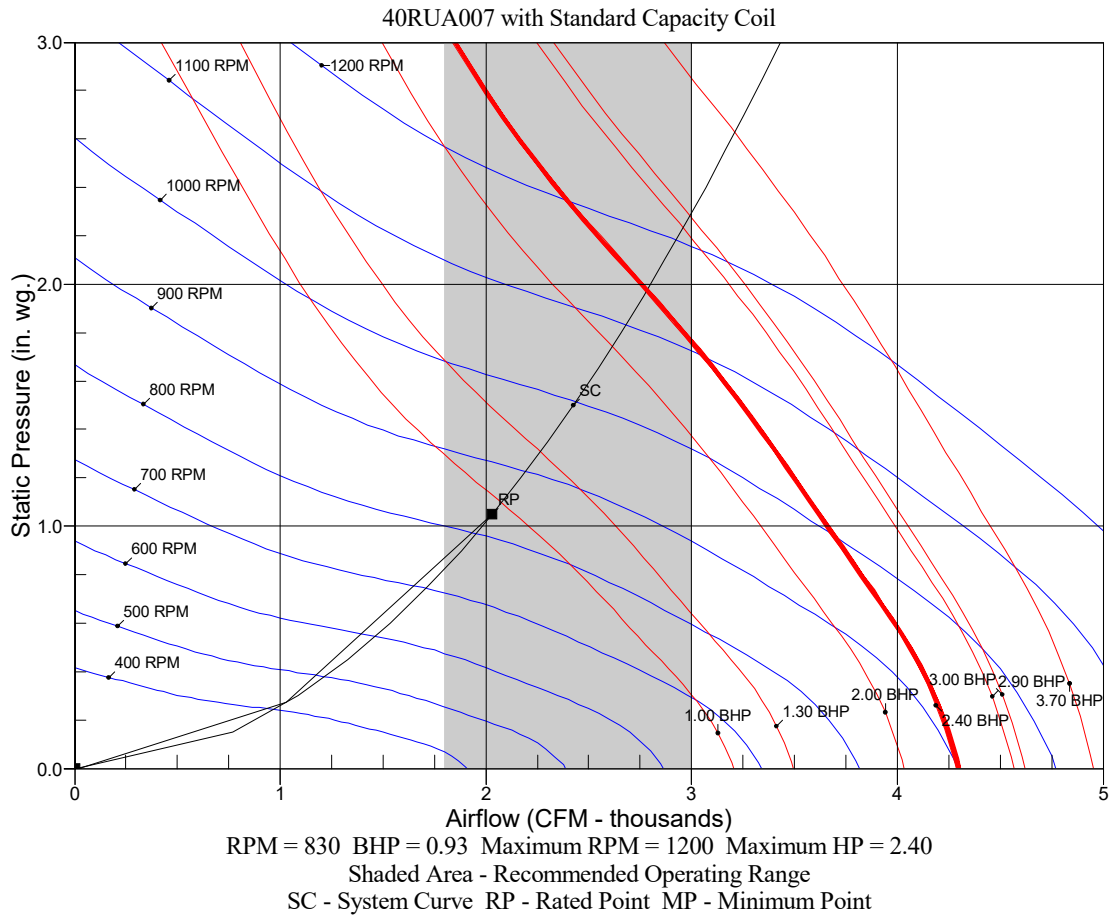
Octave Band Center Frequency, Hz	63	125	250	500	1k	2k	4k	8k	Overall
Sound Power Levels at Unit's Acoustic Center (Lw), dB	89	85	82	83	80	75	71	66	92
A-Wgtd Sound Power Levels at Unit's Acoustic Center (LwA), dBA	63	69	73	80	80	76	72	65	85
Sound Press. Levels at Dist. Specified above (Lp), dB	65	61	58	58	56	51	47	42	68
A-Wgtd Sound Press. Levels at Dist. Specified above (LpA), dBA	39	45	49	55	56	52	48	41	60

Calculation methods used in this program are patterned after the ASHRAE Guide; other ASHRAE Publications and the AHRI Acoustical Standards. While a very significant effort has been made to insure the technical accuracy of this program, it is assumed that the user is knowledgeable in the art of system sound estimation and is aware of the tolerances involved in real world acoustical estimation. This program makes certain assumptions as to the dominant sound sources and sound paths which may not always be appropriate to the real system being estimated. Because of this, no assurances can be offered that this software will always generate an accurate sound prediction from user supplied input data. If in doubt about the estimation of expected sound levels in a space, an Acoustical Engineer or a person with sound prediction expertise should be consulted.

# Performance Summary For SS - 2 - 4

Project: NIKE - Hershey, PA - 46  
 Prepared By:


04/22/2022  
 11:46AM



# Certified Drawing for SS - 2 - 4

Project: NIKE - Hershey, PA - 46  
 Prepared By:

04/22/2022  
 11:46AM

	UNITED TECHNOLOGIES SYRACUSE, NY CARRIER	P.O. BOX 4800 14221	THIS DOCUMENT IS THE PROPERTY OF CARRIER CORPORATION AND IS DELIVERED UPON THE EXPRESS CONDITION THAT THE CONTENTS WILL NOT BE DISCLOSED OR USED WITHOUT CARRIER CORPORATION'S WRITTEN CONSENT.	SUBMISSION OF THESE DRAWINGS OR DOCUMENTS DOES NOT CONSTITUTE PART PERFORMANCE OR ACCEPTANCE OF CONTRACT.
---	---	------------------------	---	---

UNIT	ELECTRICAL CHARACTERISTICS	STD. UNIT WT.		CORNER A		CORNER B		CORNER C		CORNER D		CENTER OF GRAVITY			UNIT HEIGHT				
		LBS.	KG.	LBS.	KG.	LBS.	KG.	LBS.	KG.	LBS.	KG.	X	Y	Z		H			
38AUZ-07 (MCHK)	208/230-3-60,460-3-60,575-3-60	328	149	128	58	68	31	62	28	70	32	21	[533.4]	19	[482.6]	13	[330.2]	42-3/8	[1076.0]
38AUZ-08 (MCHK)	208/230-3-60,460-3-60,575-3-60	353	160	138	63	72	33	65	29	78	35	19	[482.6]	23	[584.2]	13	[330.2]	42-3/8	[1076.0]
38AUZ-12 (MCHK)	208/230-3-60,460-3-60,575-3-60	418	190	165	75	85	39	78	35	90	41	23	[584.2]	20	[508.0]	15	[381.0]	50-3/8	[1279.2]
38AUZ-14 (MCHK)	208/230-3-60,460-3-60,575-3-60	431	196	162	73	82	37	92	42	95	43	19	[482.6]	23	[584.2]	15	[381.0]	50-3/8	[1279.2]
38AUD-12 (MCHK)	208/230-3-60,460-3-60,575-3-60	499	226	193	88	111	50	72	38	123	56	20	[508.0]	23	[584.2]	15	[381.0]	50-3/8	[1279.2]
38AUD-14 (MCHK)	208/230-3-60,460-3-60,575-3-60	505	229	190	86	88	40	76	34	151	68	20	[508.0]	24	[609.6]	15	[381.0]	50-3/8	[1279.2]
38AUZ-07 (RTPF)	208/230-3-60,460-3-60,575-3-60	389	176	141	64	96	44	62	28	91	41	18	[457.2]	24	[609.6]	21	[533.4]	42-3/8	[1076.0]
38AUZ(A,B)08 (RTPF)	208/230-3-60,460-3-60,575-3-60	391	177	142	64	96	44	62	28	91	41	18	[457.2]	24	[609.6]	21	[533.4]	42-3/8	[1076.0]
38AUZ(D,E)08 (RTPF)	208/230-3-60,460-3-60,575-3-60	430	195	142	64	96	44	76	34	111	50	18	[457.2]	24	[609.6]	21	[533.4]	42-3/8	[1076.0]
38AUZ-12 (RTPF)	208/230-3-60,460-3-60,575-3-60	490	222	177	80	120	54	78	35	114	52	18	[457.2]	24	[609.6]	24	[609.6]	50-3/8	[1279.2]
38AUZ-14 (RTPF)	208/230-3-60,460-3-60,575-3-60	598	271	195	88	142	64	110	50	151	68	20	[508.0]	25	[635.0]	24	[609.6]	50-3/8	[1279.2]
38AUD-12 (RTPF)	208/230-3-60,460-3-60,575-3-60	516	234	185	84	117	53	83	38	131	59	19	[482.6]	23	[584.2]	24	[609.6]	50-3/8	[1279.2]
38AUD-14 (RTPF)	208/230-3-60,460-3-60,575-3-60	654	297	214	97	155	70	120	54	165	75	20	[508.0]	25	[635.0]	24	[609.6]	50-3/8	[1279.2]
38AUQ-07	208/230-3-60,460-3-60,575-3-60	444	201	134	61	97	44	90	41	123	56	22	[558.0]	25	[635.0]	13	[330.2]	42-3/8	[1076.0]
38AUQ(A,B)08	208/230-3-60,460-3-60,575-3-60	483	219	162	74	110	50	85	39	125	57	20	[508.0]	24	[609.6]	21	[533.4]	42-3/8	[1076.0]
38AUQ(D,E)08	208/230-3-60,460-3-60,575-3-60	523	237	174	79	118	54	96	44	135	61	21	[533.4]	24	[609.6]	23	[584.2]	50-3/8	[1279.2]
38AUQ-12	208/230-3-60,460-3-60,575-3-60	575	261	186	84	126	57	106	48	157	71	21	[533.4]	24	[609.6]	23	[584.2]	50-3/8	[1279.2]

NOTES:

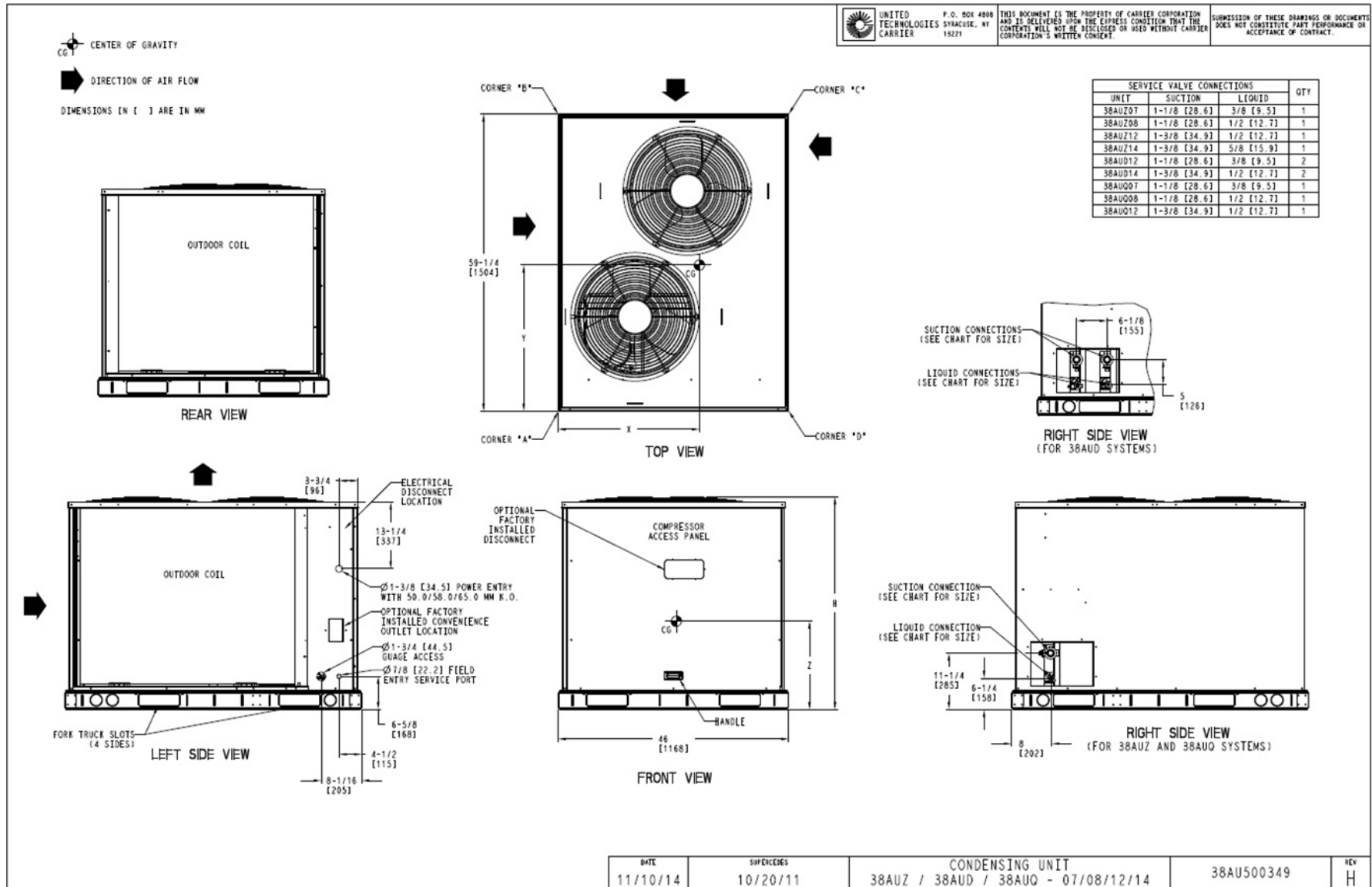
1. MINIMUM CLEARANCE (LOCAL CODES OR JURISDICTION MAY PREVAIL):
  - A. BOTTOM TO COMBUSTIBLE SURFACES: 0 INCHES.
  - B. OUTDOOR COIL, FOR PROPER AIR FLOW: 36 INCHES ONE SIDE, 12 INCHES THE OTHER. THE SIDE GETTING THE GREATER CLEARANCE IS OPTIONAL. STANDARD CLEARANCES ON REMAINING TWO SIDES.
  - C. OVERHEAD: 60 INCHES, TO ASSURE PROPER OUTDOOR FAN OPERATION.
  - D. BETWEEN UNITS: CONTROL BOX SIDE, 42 INCHES PER NEC.
  - E. BETWEEN UNIT AND UNGROUNDED SURFACES: CONTROL BOX SIDE, 36 INCHES PER NEC.
  - F. BETWEEN UNIT AND BLOCK OR CONCRETE WALLS AND OTHER GROUNDED SURFACES: CONTROL BOX SIDE, 42 INCHES PER NEC.
2. WITH EXCEPTION OF THE CLEARANCE FOR THE OUTDOOR COIL AS STATED IN NOTE 1B, A REMOVABLE FENCE OR BARRICADE REQUIRES NO CLEARANCE.
3. UNITS MAY BE INSTALLED ON COMBUSTIBLE FLOORS MADE FROM WOOD OR CLASS A, B OR C ROOF COVERING MATERIAL.

DATE	SUPERCEDES	CONDENSING UNIT	REV
11/10/14	10/20/11	38AUZ / 38AUD / 38AUQ - 07/08/12/14	38AU500349 H

# Certified Drawing for SS - 2 - 4

Project: NIKE - Hershey, PA - 46  
 Prepared By:

04/22/2022  
 11:46AM



DATE	REVISIONS	CONDENSING UNIT		REV
11/10/14	10/20/11	38AUZ / 38AUD / 38AU0 - 07/08/12/14	38AU500349	H

# Certified Drawing for SS - 2 - 4

Project: NIKE - Hershey, PA - 46  
 Prepared By:

04/22/2022  
 11:46AM

UNIT	UNIT WEIGHT (W/TXV)
40RUA-07	399 lbs (181 kg)
40RUA-08	404 lbs (183 kg)
40RUA-12	425 lbs (193 kg)
40RUO-07	381 lbs (173 kg)
40RUO-08	385 lbs (175 kg)
40RUO-12	427 lbs (194 kg)
40RUS-08	390 lbs (177 kg)
40RUS-10	391 lbs (177 kg)
40RUS-12	391 lbs (177 kg)



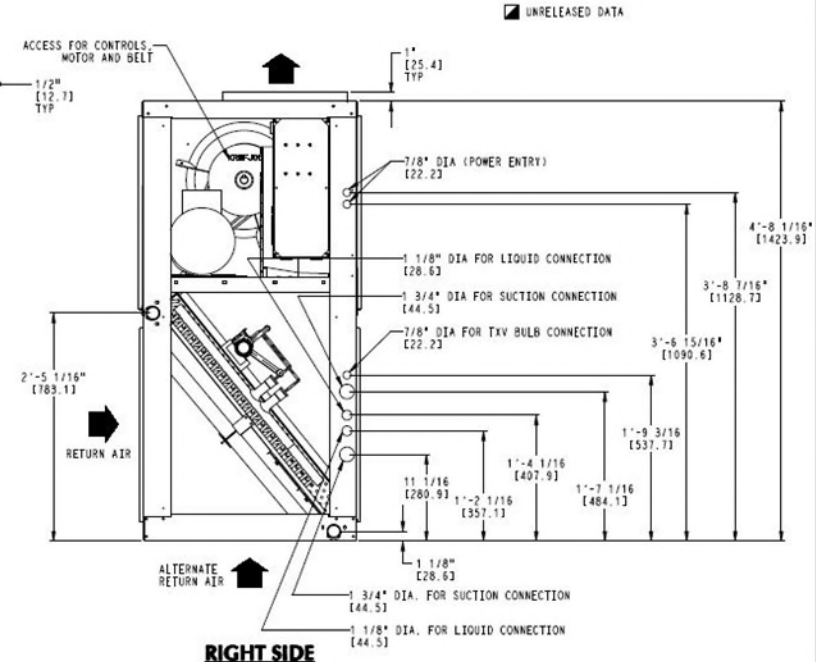
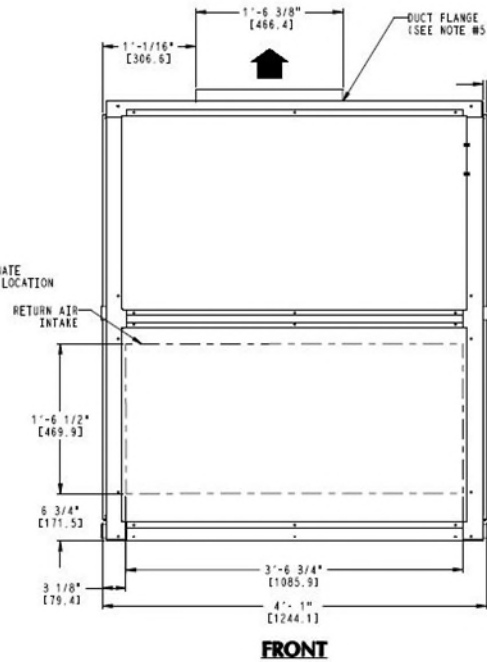
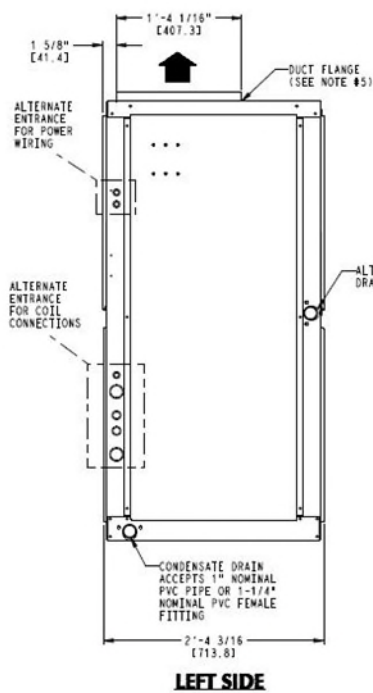
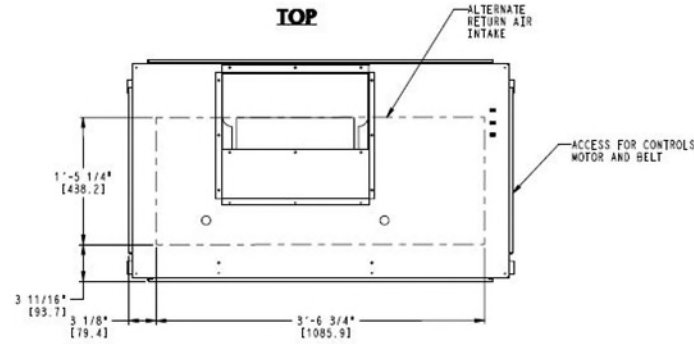
THIS DOCUMENT IS THE PROPERTY OF CARRIER CORPORATION AND IS DELIVERED UPON THE EXPRESS CONDITION THAT THE CONTENTS WILL NOT BE DISCLOSED OR USED WITHOUT CARRIER CORPORATION'S WRITTEN CONSENT.

SUBMISSION OF THESE DRAWINGS OR DOCUMENTS DOES NOT CONSTITUTE PART PERFORMANCE OR ACCEPTANCE OF CONTRACT.

- NOTES:
1. DIMENSIONS IN ( ) ARE IN MILLIMETERS.
  2. DIRECTIONS OF AIRFLOW.
  3. RECOMMENDED CLEARANCE:  
 REAR: 2 ft 6 in. [762 mm]  
 FRONT: 2 ft 6 in. [762 mm]  
 RIGHT SIDE: 2 ft 6 in. [762 mm]  
 LEFT SIDE: 2 ft 6 in. [762 mm]  
 LOCAL CODES OR JURISDICTION MAY PREVAIL.
  4. LIQUID PIPING NOT SUPPLIED BY CARRIER.
  5. DUCT FLANGE IS FACTORY SUPPLIED AND FIELD INSTALLED.

ACCESSORY	SEE DRAWING
DISCHARGE PLENUM	40RWS00996
ECONOMIZER	40RWS00999
STEAM COIL	40RWS00999
HOT WATER COIL	40RWS00999
RETURN AIR GRILLE	40RWS00996
OVERHEAD SUSPENSION	40RWS00996
SUBBASE	40RWS00996
ELECTRIC HEAT	40RWS01002

UNRELEASED DATA



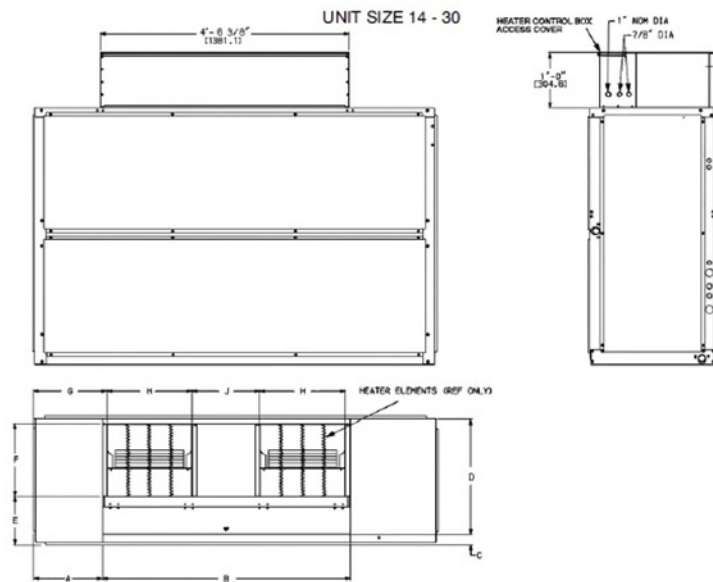
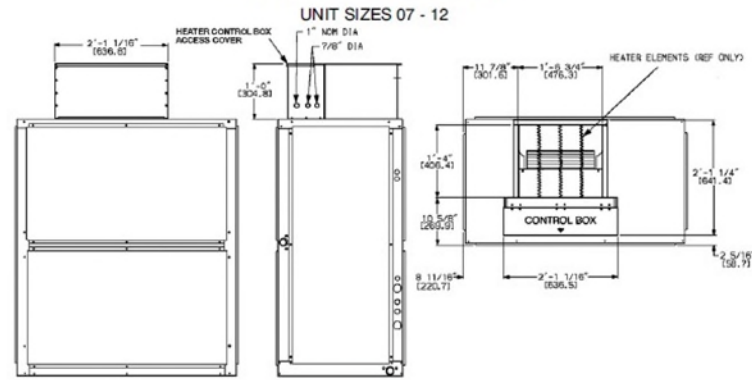
ITC CLASSIFICATION	SHEET	DATE	SUPERCEDES	FAN COIL UNITS	REV
U.S. ECCN: NSR	1 OF 2	05/27/21	01/23/12	40RU A / Q / S - 07 / 08 / 10 / 12	G

# Certified Drawing for SS - 2 - 4

Project: NIKE - Hershey, PA - 46  
 Prepared By:

04/22/2022  
 11:46AM

## ELECTRIC HEAT ACCESSORY



C160006

40RU UNIT SIZE	A	B	C	D	E	F	G	H	J
14 - 25	1'-3 1/4" [387.4]	4'-6 3/8" [1381.1]	2 5/16" [58.7]	2'-1 1/4" [641.4]	10 3/8" [269.3]	1'-4" [406.4]	1'-4 5/16" [414.3]	1'-6 3/4" [476.3]	1'-7/8" [327.0]
28, 30	1'-3 3/8" [390.5]	5'-4 7/8" [1636.8]	2 1/16" [52.4]	2'-6 3/16" [766.8]	1'-1 1/4" [311.2]	1'-7" [482.6]	1'-4 5/16" [414.3]	1'-10" [558.8]	1'-4 7/8" [417.1]

NOTE: Dimensions in [ ] are millimeters.

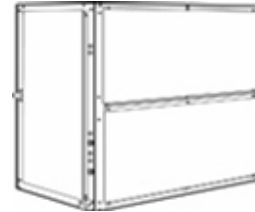
**SS - 5**

**Tag Cover Sheet  
Unit Report  
Performance Report  
Certified Drawing**

## Unit Report For SS - 5

Project: NIKE - Hershey, PA - 46  
Prepared By:

04/22/2022  
11:46AM



### Outdoor Unit Parameters

Unit Quantity: ..... 1  
 Unit Model: ..... **38AUZ**  
 Unit Size: ..... **7.5 Tons**  
 Voltage: ..... **208-3-60** V-Ph-Hz  
 Condenser Coil: **Al/Cu with Louvered Hail Guard**  
 No. of DX Circuits: ..... 1  
 No. of Stages: ..... **Dual Stage**

### System Parameter

System Quantity: ..... 1  
 Refrigerant Type: ..... **PURON**  
 Compressor Quantity: ..... 1  
 Compressor Type: ..... **Scroll**  
 Std. Capacity Steps: ..... **66,100**  
 No. of Outdoor fans: ..... 2

### Outdoor Unit Dimensions and Weight

Unit Length: ..... **4' 11.4"**  
 Unit Width: ..... **3' 9.9"**  
 Unit Height: ..... **3' 6.4"**  
 Unit Shipping Weight: ..... **391** lb  
 Unit Operating Weight: ..... **391** lb

### Indoor Unit Parameters

Unit Model: ..... **40RUA**  
 Unit Size: ..... **7.5 Tons**  
 No. of Coils: ..... 1  
 Voltage: ..... **208-3-60** V-Ph-Hz

### Indoor Unit Dimensions and Weight

Unit Length: ..... **4' 1.0"**  
 Unit Width: ..... **2' 4.2"**  
 Unit Height: ..... **4' 8.1"**  
 Unit Shipping Weight: ..... **404** lb  
 Unit Operating Weight: ..... **404** lb  
 Add Service Clearance for Accy Heater: **.2' 6.0"**

### Warranty Information Outdoor (Note: for US & Canada only)

First Year - Parts Only (Standard)

### Warranty Information Indoor (Note: for US & Canada only)

First Year - Parts Only (Standard)

**NOTE: Please see Warranty Catalog 808-218 for explanation of policies and ordering methods.**

### Ordering Information

Part Number	Description	Quantity
<b>Base Unit - Outdoor</b>		
38AUZE08A0M5-0A1C0		1
	Base Unit	
	Al/Cu with Louvered Hail Guard Condensing Coil	1
	Single Circ, 2 stage w/Low Ambient (07, 08 only) Refrigerant Options	1
	Service Options - Un-Powered Convenience Outlet	1
	Electrical Options - Non-Fused Disconnect	1
	Packaging Options - Standard	1
	Standard Electrical Mechanical Controls	1
	Refrig Circ/Compressor Staging - Single Circ/Dual Stage (size 07 & 08 only)	1
<b>Base Unit - Indoor</b>		

## Unit Report For SS - 5

Project: NIKE - Hershey, PA - 46  
Prepared By:

04/22/2022  
11:46AM

40RUAA08T2A5-0A1A0		1
	Base Unit	
	Std Static, Std Effy Motor/ Medium Drive	1
	Cabinet Paint - Painted	1
	2-Speed Fan Controller (VFD)	1
CAELHEAT010A00	25.0 kW, 240-3-60 Electric Heater	1

The 38AUZ/AUD are furnished with filter drier which is factory provided (field installed). Additional filter driers can be purchased separately through RCD (Replacement Components Division). See the Product Library for Replacement Filter Drier Information for more information.

## Performance Summary For SS - 5

Project: NIKE - Hershey, PA - 46  
 Prepared By:

04/22/2022  
 11:46AM

**System:** ..... **38AUZ008/40RUA008**  
 No. of Stages: ..... **Dual Stage**  
 System Quantity: ..... **1**  
 Altitude: ..... **0.0** ft  
 EER @ ARI Conditions: ..... **11.2**  
 IEER: ..... **14.0**  
 Suction Line Loss: ..... **1.4** °F  
 System meets ASHRAE 90.1-2016 min IEER requirement.

**This system has a combined part load efficiency (IEER) that meets or exceeds the US DOE 2018 minimum cooling efficiency standards.**

### Typical Liquid and Suction Line Sizing

Pipe Length	Liquid Line Size	Suction Line Size
0 - 25	1/2	7/8
26 - 50	5/8	1 1/8
51 - 75	5/8	1 1/8
76 - 100	5/8	1 1/8
101 - 125	5/8	1 3/8
126 - 150	5/8	1 3/8
151 - 175	5/8	1 3/8
176 - 200	5/8	1 3/8

**Refer to the 38AU installation instructions for installation specific line sizing guidance**

### Outdoor Unit Parameters

Unit Quantity: **1**  
 PartNumber: **38AUZE08A0M5-0A1C0**  
 Unit Model: **38AUZ**  
 Unit Size: **7.5 Tons**  
 Condenser Coil: **Al/Cu with Louvered Hail Guard**  
 No. of DX Circuits: **1**  
 Voltage: **208-3-60** V-Ph-Hz  
 Clg Ent Air DB: **100.0** °F

### Outdoor Electrical Data on Units produced after 07/14/2019

Unit Voltage: **208-3-60** V-Ph-Hz  
 Unit MCA: **37.0** Amps  
 Unit MOCP: **60.0** Amps  
 Total Compressor Power of Unit: **NA**  
 Voltage Range Min: **187** V  
 Voltage Range Max: **253** V  
 Compressor RLA: **26.8**  
 Compressor LRA: **164**  
 Compressor Quantity: **1**  
 Fan Motors Qty: **2**  
 Fan Motor FLA: **1.5** Amps  
 Notice: Outdoor unit elect. data is based on 208-3-60  
 Control Panel SCCR: 5kA RMS at Rated Symmetrical Voltage  
 \*Single Circuit, Two-Stage Compressor Option

### Outdoor Electrical Data on Units produced prior to 07/14/2019

Unit MCA: **33.0** Amps  
 Unit MOCP: **50.0** Amps  
 Compressor RLA: **24**  
 Compressor LRA: **186**

### Indoor Unit Parameters

PartNumber: **40RUA08T2A5-0A1A0**

## Performance Summary For SS - 5

Project: NIKE - Hershey, PA - 46  
 Prepared By:

04/22/2022  
 11:46AM

Unit Model: **40RUA**  
 Unit Size: **7.5 Tons**  
 Coil Rows: **4**  
 No. of Splits: **1**  
 Voltage: **208-3-60** V-Ph-Hz  
 Actual Airflow: **2535.0** CFM  
 Standard Airflow: **2535.0** CFM  
 Total Clg Cap.(Gross): **89.9** MBH  
 Sensible Clg Cap.(Gross): **64.3** MBH  
 Ent Air DB: **78.3** °F  
 Ent Air WB: **66.2** °F  
 Ent Enthalpy: **30.82** BTU/lb  
 Lvg Air DB: **54.8** °F  
 Lvg Air WB: **54.6** °F  
 Lvg Enthalpy: **22.94** BTU/lb  
 Coil Bypass Factor: **NA**

### Accessory Heating

Heating Type: **Electric**  
 Acc Htg Capacity: **64.15** MBH  
 Acc Htg Ent. Air Temp: **60.0** °F  
 Acc Htg Lvg. Air Temp: **83.4** °F  
 Acc Heater Nominal Voltage: **208-3-60**  
 Acc Heater Nominal kW: **25.0** kW  
 Acc Heater Actual Voltage: **208-3-60**  
 Acc Heater FLA: **52.1** amps  
 Acc Stage 1 Actual kW: **11.3** kW  
 Acc Stage 2 Actual kW: **7.5** kW

### Indoor Supply Fan

\*\*\*Using 2-Speed Fan Controller (VFD)  
 Indoor Unit External Static: **1.00** in wg  
 Economizer Loss: **0.00** in wg  
 Grille Loss: **0.00** in wg  
 Plenum Loss: **0.00** in wg  
 Acc. Heating Loss: **0.08** in wg  
 Total Ext Static: **1.08** in wg  
 Fan Speed: **853** RPM  
 Fan Power: **1.19** BHP  
 Fan Motor Max: **2.40** BHP  
 Fan Motor FLA: **7.1** Amps  
 Motor and Medium Static Drive Required.  
 Selected Medium Static Drive Range: 733 - 949 RPM

### Indoor Electrical Data

Unit Voltage: **208-3-60** V-Ph-Hz  
 Unit MCA: **74.0** Amps  
 Unit MOCP: **80.0** Amps  
 Notice: Indoor unit elect. data is based on 208-3-60

### Acoustics

Sound Power Levels, db re 10E-12 Watts

A-Weighted	Outdoor Unit (dB)	Indoor Unit (dB,Ducted)
Total Level	84.6	88.4
63Hz	63.1	69.1
125Hz	68.9	75.2
250Hz	73.4	78.7
500Hz	79.5	83.1
1000Hz	80.2	82.3

## Performance Summary For SS - 5

Project: NIKE - Hershey, PA - 46  
Prepared By:

04/22/2022  
11:46AM

2000Hz	76.4	81.5
4000Hz	72.0	77.3
8000Hz	64.9	NA
Sound Message	Sound for AUZ008	Sound for RUA008

### Acoustic Notes:

1. 38AUZ/D/Q units sound ratings are in accordance with AHRI 270-2008 - Sound Rating of Outdoor Unitary Equipment.
2. 40RU units sound ratings are in accordance with AHSRAE 1987 HVAC Systems and Applications handbook.
3. The acoustic center of the unit is located at the geometric center of the unit.

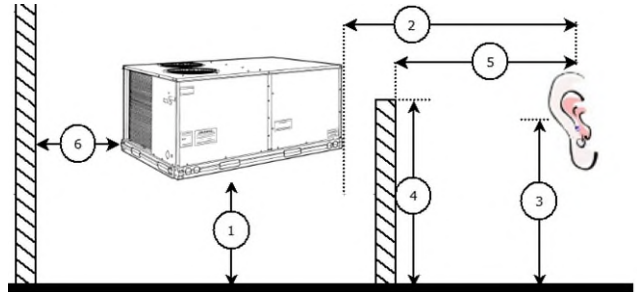
## Performance Summary For SS - 5

Project: NIKE - Hershey, PA - 46  
Prepared By:

04/22/2022  
11:46AM

### Advanced Acoustics Parameters

- 1. Unit height above ground: ..... **1.0** ft
- 2. Horizontal distance from unit to receiver: ..... **20.0** ft
- 3. Receiver height above ground: ..... **5.7** ft
- 4. Height of obstruction: ..... **0.0** ft
- 5. Horizontal dist. from obstruction to receiver: ..... **0.0** ft
- 6. Horizontal dist. from unit to obstruction: ..... **0.0** ft



### Detailed Acoustics Information

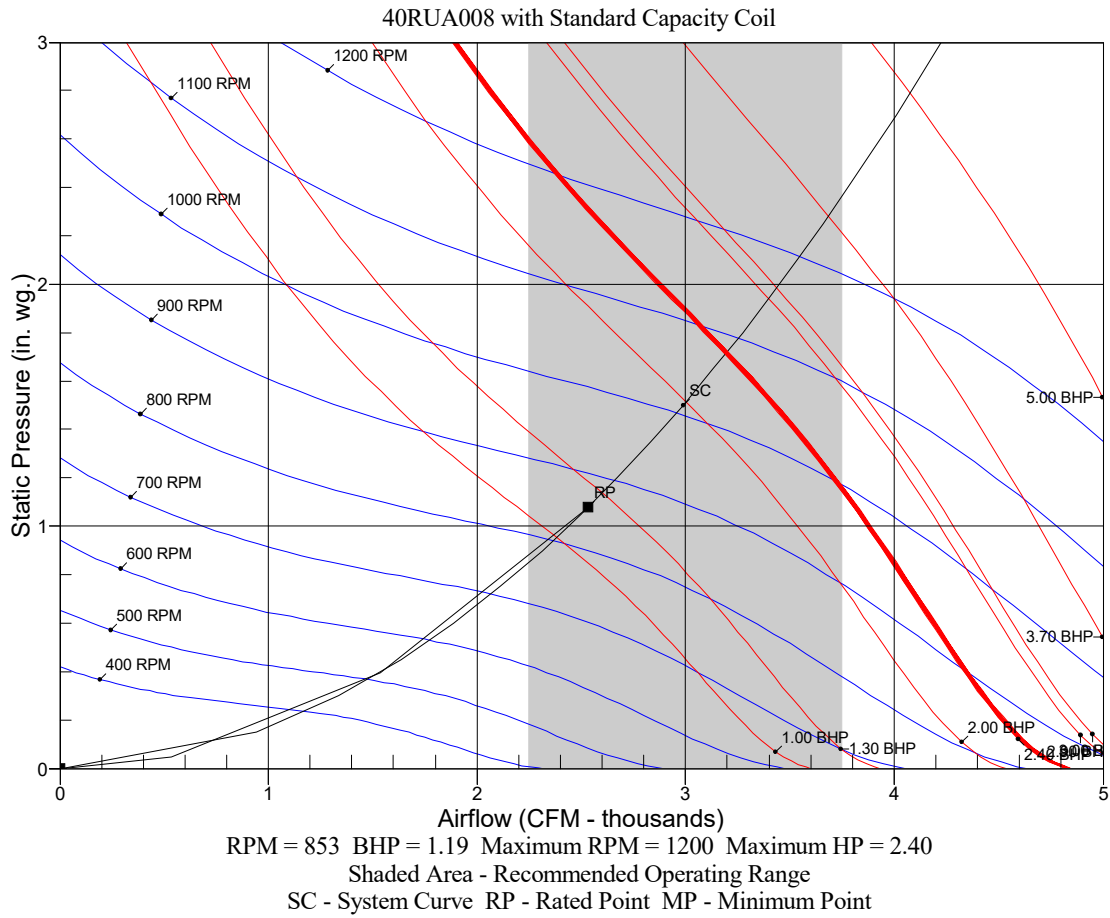
Octave Band Center Frequency, Hz	63	125	250	500	1k	2k	4k	8k	Overall
Sound Power Levels at Unit's Acoustic Center (L <sub>w</sub> ), dB	89	85	82	83	80	75	71	66	92
A-Wgtd Sound Power Levels at Unit's Acoustic Center (L <sub>wA</sub> ), dBA	63	69	73	80	80	76	72	65	85
Sound Press. Levels at Dist. Specified above (L <sub>p</sub> ), dB	65	61	58	58	56	51	47	42	68
A-Wgtd Sound Press. Levels at Dist. Specified above (L <sub>pA</sub> ), dBA	39	45	49	55	56	52	48	41	60

Calculation methods used in this program are patterned after the ASHRAE Guide; other ASHRAE Publications and the AHRI Acoustical Standards. While a very significant effort has been made to insure the technical accuracy of this program, it is assumed that the user is knowledgeable in the art of system sound estimation and is aware of the tolerances involved in real world acoustical estimation. This program makes certain assumptions as to the dominant sound sources and sound paths which may not always be appropriate to the real system being estimated. Because of this, no assurances can be offered that this software will always generate an accurate sound prediction from user supplied input data. If in doubt about the estimation of expected sound levels in a space, an Acoustical Engineer or a person with sound prediction expertise should be consulted.

# Performance Summary For SS - 5

Project: NIKE - Hershey, PA - 46  
Prepared By:


04/22/2022  
11:46AM



# Certified Drawing for SS - 5

Project: NIKE - Hershey, PA - 46  
 Prepared By:

04/22/2022  
 11:46AM

	UNITED TECHNOLOGIES SYRACUSE, NY CARRIER	P.O. BOX 4800 13221	THIS DOCUMENT IS THE PROPERTY OF CARRIER CORPORATION AND IS DELIVERED UPON THE EXPRESS CONDITION THAT THE CONTENTS WILL NOT BE DISCLOSED OR USED WITHOUT CARRIER CORPORATION'S WRITTEN CONSENT.	SUBMISSION OF THESE DRAWINGS OR DOCUMENTS DOES NOT CONSTITUTE PART PERFORMANCE OR ACCEPTANCE OF CONTRACT.
---	---	------------------------	---	---

UNIT	ELECTRICAL CHARACTERISTICS	STD. UNIT WT.		CORNER A		CORNER B		CORNER C		CORNER D		CENTER OF GRAVITY			UNIT HEIGHT
		LBS.	KG.	LBS.	KG.	LBS.	KG.	LBS.	KG.	LBS.	KG.	X	Y	Z	
38AUZ-07 (MCHK)	208/230-3-60,460-3-60,575-3-60	328	149	128	58	68	31	62	28	70	32	21 [533.4]	19 [482.6]	13 [330.2]	42-3/8 [1076.0]
38AUZ-08 (MCHK)	208/230-3-60,460-3-60,575-3-60	353	160	138	63	72	33	65	29	78	35	19 [482.6]	23 [584.2]	13 [330.2]	42-3/8 [1076.0]
38AUZ-12 (MCHK)	208/230-3-60,460-3-60,575-3-60	418	190	165	75	85	39	78	35	90	41	23 [584.2]	20 [508.0]	15 [381.0]	50-3/8 [1279.2]
38AUZ-14 (MCHK)	208/230-3-60,460-3-60,575-3-60	431	196	162	73	82	37	92	42	95	43	19 [482.6]	23 [584.2]	15 [381.0]	50-3/8 [1279.2]
38AUD-12 (MCHK)	208/230-3-60,460-3-60,575-3-60	499	226	193	88	111	50	72	38	123	56	20 [508.0]	23 [584.2]	15 [381.0]	50-3/8 [1279.2]
38AUD-14 (MCHK)	208/230-3-60,460-3-60,575-3-60	505	229	190	86	88	40	76	34	151	68	20 [508.0]	24 [609.6]	15 [381.0]	50-3/8 [1279.2]
38AUZ-07 (RTPF)	208/230-3-60,460-3-60,575-3-60	389	176	141	64	96	44	62	28	91	41	18 [457.2]	24 [609.6]	21 [533.4]	42-3/8 [1076.0]
38AUZ(A,B)08 (RTPF)	208/230-3-60,460-3-60,575-3-60	391	177	142	64	96	44	62	28	91	41	18 [457.2]	24 [609.6]	21 [533.4]	42-3/8 [1076.0]
38AUZ(D,E)08 (RTPF)	208/230-3-60,460-3-60,575-3-60	430	195	142	64	96	44	76	34	111	50	18 [457.2]	24 [609.6]	21 [533.4]	42-3/8 [1076.0]
38AUZ-12 (RTPF)	208/230-3-60,460-3-60,575-3-60	490	222	177	80	120	54	78	35	114	52	18 [457.2]	24 [609.6]	24 [609.6]	50-3/8 [1279.2]
38AUZ-14 (RTPF)	208/230-3-60,460-3-60,575-3-60	598	271	195	88	142	64	110	50	151	68	20 [508.0]	25 [635.0]	24 [609.6]	50-3/8 [1279.2]
38AUD-12 (RTPF)	208/230-3-60,460-3-60,575-3-60	516	234	185	84	117	53	83	38	131	59	19 [482.6]	23 [584.2]	24 [609.6]	50-3/8 [1279.2]
38AUD-14 (RTPF)	208/230-3-60,460-3-60,575-3-60	654	297	214	97	155	70	120	54	165	75	20 [508.0]	25 [635.0]	24 [609.6]	50-3/8 [1279.2]
38AUQ-07	208/230-3-60,460-3-60,575-3-60	444	201	134	61	97	44	90	41	123	56	22 [558.0]	25 [635.0]	13 [330.2]	42-3/8 [1076.0]
38AUQ(A,B)08	208/230-3-60,460-3-60,575-3-60	483	219	162	74	110	50	85	39	125	57	20 [508.0]	24 [609.6]	21 [533.4]	42-3/8 [1076.0]
38AUQ(D,E)08	208/230-3-60,460-3-60,575-3-60	523	237	174	79	118	54	96	44	135	61	21 [533.4]	24 [609.6]	23 [584.2]	50-3/8 [1279.2]
38AUQ-12	208/230-3-60,460-3-60,575-3-60	575	261	186	84	126	57	106	48	157	71	21 [533.4]	24 [609.6]	23 [584.2]	50-3/8 [1279.2]

NOTES:

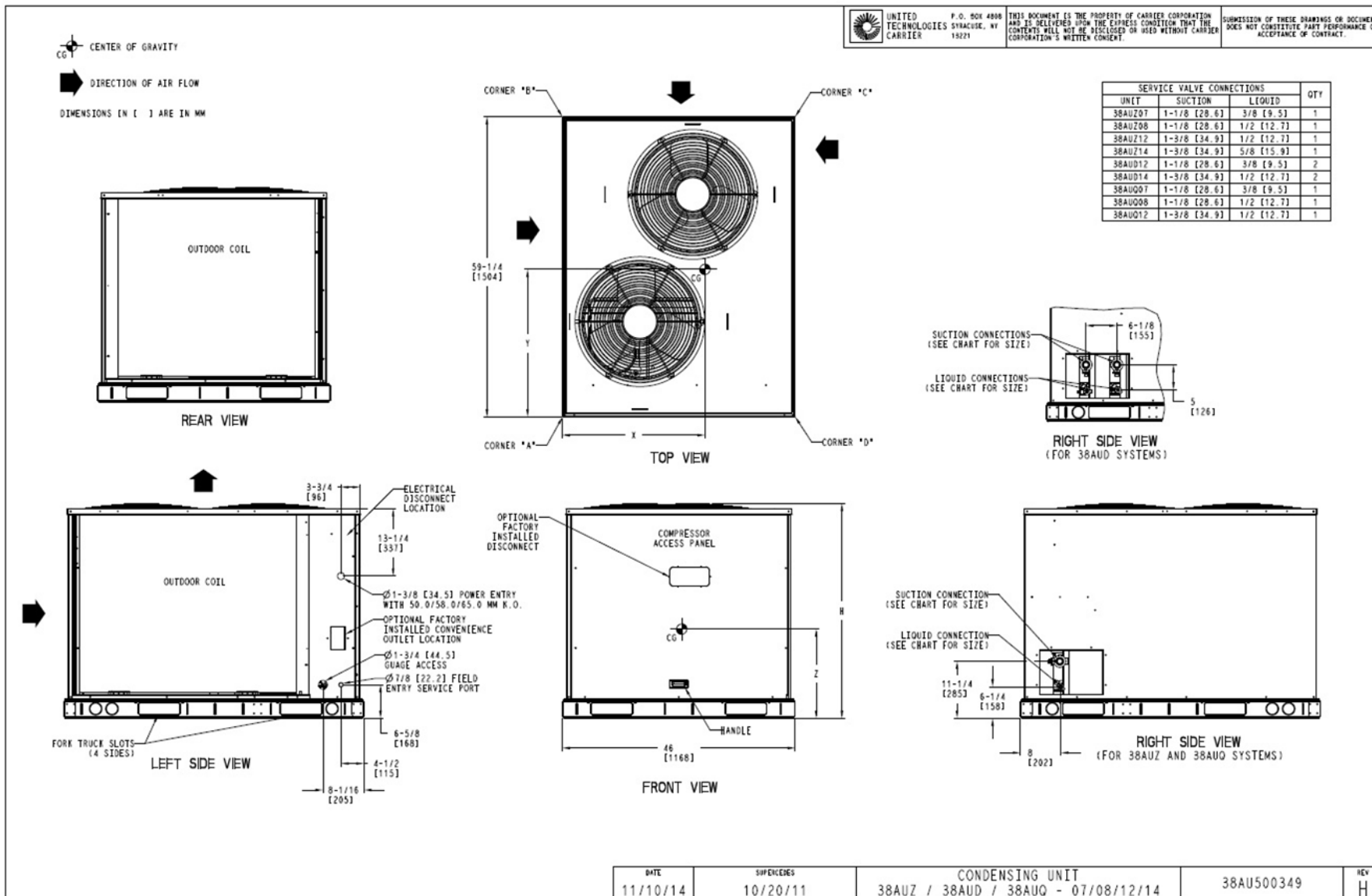
1. MINIMUM CLEARANCE (LOCAL CODES OR JURISDICTION MAY PREVAIL):
  - A. BOTTOM TO COMBUSTIBLE SURFACES: 0 INCHES.
  - B. OUTDOOR COIL, FOR PROPER AIR FLOW: 36 INCHES ONE SIDE, 12 INCHES THE OTHER. THE SIDE GETTING THE GREATER CLEARANCE IS OPTIONAL. STANDARD CLEARANCES ON REMAINING TWO SIDES.
  - C. OVERHEAD: 60 INCHES, TO ASSURE PROPER OUTDOOR FAN OPERATION.
  - D. BETWEEN UNITS: CONTROL BOX SIDE, 42 INCHES PER NEC.
  - E. BETWEEN UNIT AND UNGROUNDED SURFACES: CONTROL BOX SIDE, 36 INCHES PER NEC.
  - F. BETWEEN UNIT AND BLOCK OR CONCRETE WALLS AND OTHER GROUNDED SURFACES: CONTROL BOX SIDE, 42 INCHES PER NEC.
2. WITH EXCEPTION OF THE CLEARANCE FOR THE OUTDOOR COIL AS STATED IN NOTE 1B, A REMOVABLE FENCE OR BARRICADE REQUIRES NO CLEARANCE.
3. UNITS MAY BE INSTALLED ON COMBUSTIBLE FLOORS MADE FROM WOOD OR CLASS A, B OR C ROOF COVERING MATERIAL.

DATE	SUPERCEDES	CONDENSING UNIT	REV
11/10/14	10/20/11	38AUZ / 38AUD / 38AUQ - 07/08/12/14	38AU500349 H

# Certified Drawing for SS - 5

Project: NIKE - Hershey, PA - 46  
 Prepared By:

04/22/2022  
 11:46AM



# Certified Drawing for SS - 5

Project: NIKE - Hershey, PA - 46  
Prepared By:

04/22/2022  
11:46AM

UNIT	UNIT WEIGHT (W/TXV)
40RUA-07	399 lbs (181 kg)
40RUA-08	404 lbs (183 kg)
40RUA-12	425 lbs (193 kg)
40RUO-07	381 lbs (173 kg)
40RUO-08	385 lbs (175 kg)
40RUO-12	427 lbs (194 kg)
40RUS-08	390 lbs (177 kg)
40RUS-10	391 lbs (177 kg)
40RUS-12	391 lbs (177 kg)



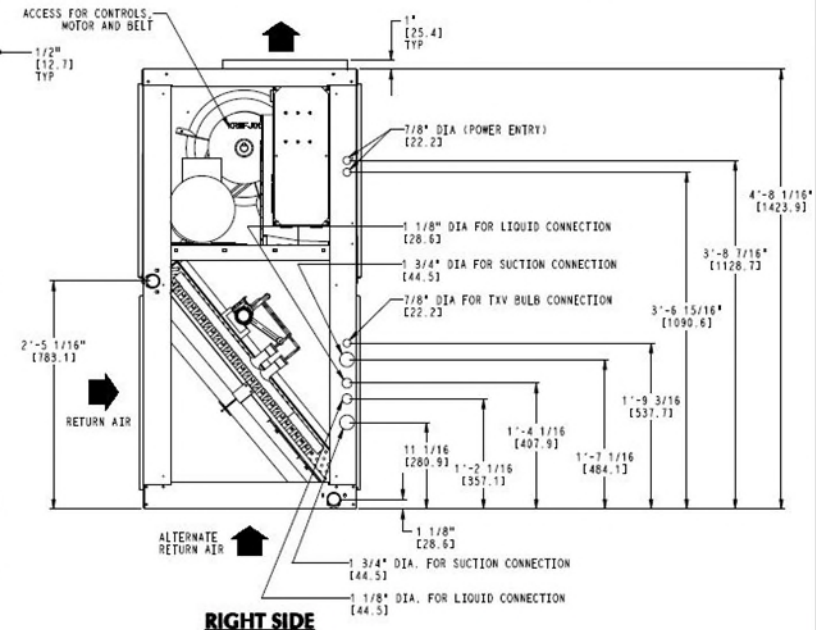
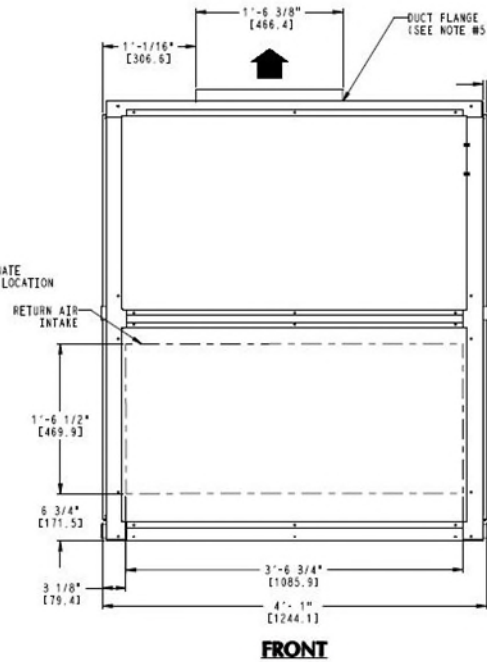
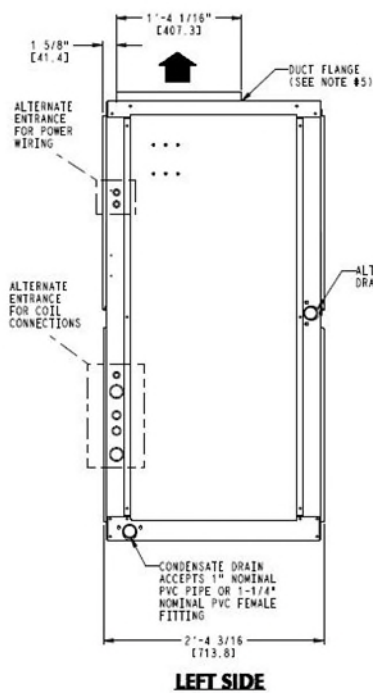
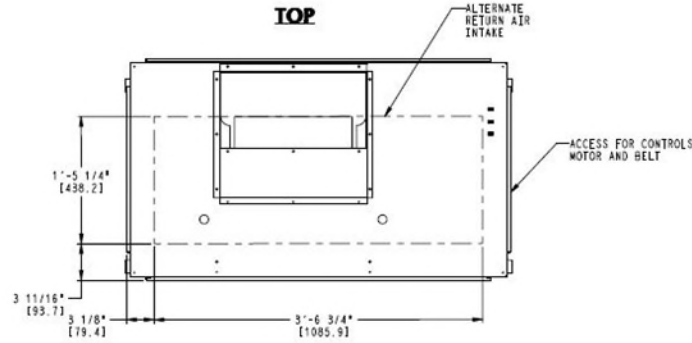
THIS DOCUMENT IS THE PROPERTY OF CARRIER CORPORATION AND IS DELIVERED UPON THE EXPRESS CONDITION THAT THE CONTENTS WILL NOT BE DISCLOSED OR USED WITHOUT CARRIER CORPORATION'S WRITTEN CONSENT.

SUBMISSION OF THESE DRAWINGS OR DOCUMENTS DOES NOT CONSTITUTE PART PERFORMANCE OR ACCEPTANCE OF CONTRACT.

- NOTES:
- DIMENSIONS IN ( ) ARE IN MILLIMETERS.
  - DIRECTIONS OF AIRFLOW.
  - RECOMMENDED CLEARANCE:  
REAR: 2 ft 6 in. [762 mm]  
FRONT: 2 ft 6 in. [762 mm]  
RIGHT SIDE: 2 ft 6 in. [762 mm]  
LEFT SIDE: 2 ft 6 in. [762 mm]  
LOCAL CODES OR JURISDICTION MAY PREVAIL.
  - LIQUID PIPING NOT SUPPLIED BY CARRIER.
  - DUCT FLANGE IS FACTORY SUPPLIED AND FIELD INSTALLED.

ACCESSORY	SEE DRAWING
DISCHARGE PLENUM	40RWS00996
ECONOMIZER	40RWS00999
STEAM COIL	40RWS00999
HOT WATER COIL	40RWS00999
RETURN AIR GRILLE	40RWS00996
OVERHEAD SUSPENSION	40RWS00996
SUBBASE	40RWS00996
ELECTRIC HEAT	40RWS01002

UNRELEASED DATA



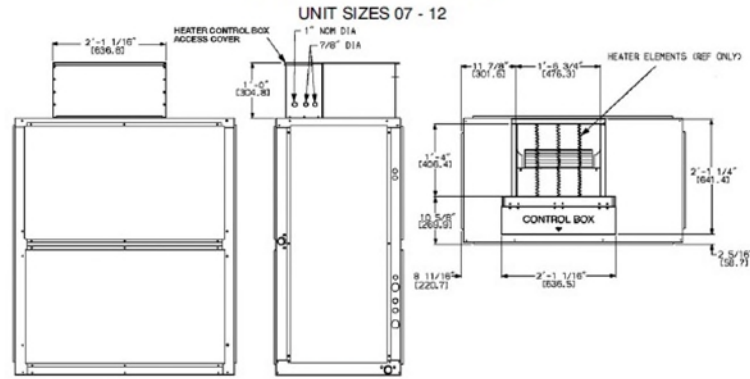
ITC CLASSIFICATION	SHEET	DATE	SUPERCEDES	FAN COIL UNITS	REV
U.S. ECCN: NSR	1 OF 2	05/27/21	01/23/12	40RU A / Q / S - 07 / 08 / 10 / 12	G

# Certified Drawing for SS - 5

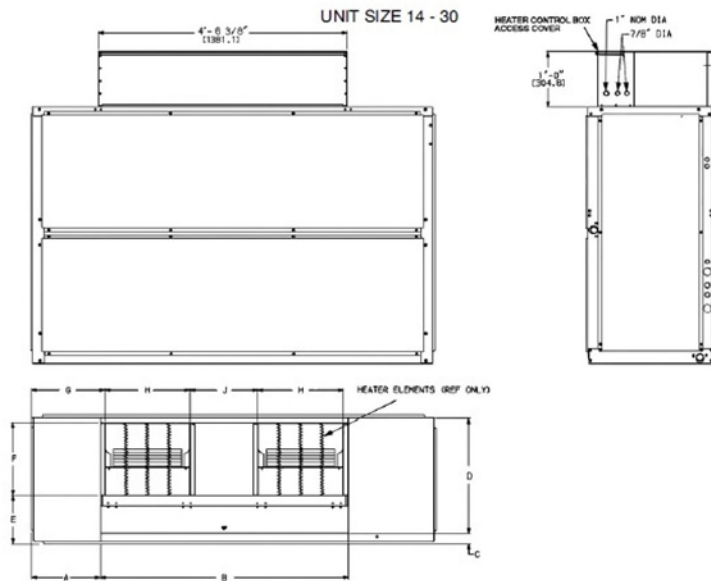
Project: NIKE - Hershey, PA - 46  
 Prepared By:

04/22/2022  
 11:46AM

## ELECTRIC HEAT ACCESSORY



40RU



C160006

40RU UNIT SIZE	A	B	C	D	E	F	G	H	J
14 - 25	1'-3 1/4" [387.4]	4'-6 3/8" [1381.1]	2 5/16" [58.7]	2'-1 1/4" [641.4]	10 5/8" [269.3]	1'-4" [406.4]	1'-4 5/16" [414.3]	1'-6 3/4" [476.3]	1'-7/8" [327.0]
28, 30	1'-3 3/8" [390.5]	5'-4 7/8" [1636.8]	2 1/16" [52.4]	2'-6 3/16" [766.8]	1'-1 1/4" [311.2]	1'-7" [482.6]	1'-4 5/16" [414.3]	1'-10" [558.8]	1'-4 7/8" [417.1]

NOTE: Dimensions in [ ] are millimeters.

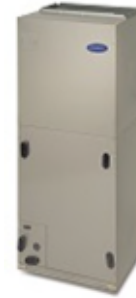
**SS - 6**

**Tag Cover Sheet  
Unit Report  
Performance Report  
Certified Drawing**

## Unit Report For SS - 6

Project: NIKE - Hershey, PA - 46  
Prepared By:

04/22/2022



### Outdoor Unit Parameters

Unit Model:.....**24ABB**  
Unit Size:..... **5 Tons (Size 60)**  
Voltage:..... **208/230-3-60** V-Ph-Hz

### Indoor Coil Parameters

Unit Model:..... **FV4C**  
Unit Size:..... **Size 006 (30 - 60,000 Btuh)**  
Cabinet Insulation: **Modular with 1-in. super thick insulation**  
.....  
Voltage:..... **208-1-60** V-Ph-Hz  
Refrigerant Type: ..... **Puron**  
Heating Size:..... **No Heat**

### Outdoor Unit Dimensions and Weight

Unit Length:..... **31.1875** in  
Unit Width: ..... **31.1875** in  
Unit Height: ..... **28.6875** in  
Unit Shipping Weight:..... **230.** lb

### Indoor Coil Dimensions and Weight

Unit Length:..... **22.0625** in  
Unit Width:..... **24.6875** in  
Unit Height: ..... **59.1875** in  
Unit Shipping Weight:..... **207.** lb

### RESIDENTIAL APPLICATIONS

This warranty is to the original purchasing owner and subsequent owners only to the extent and as stated in the Warranty Conditions and below. The limited warranty period in years, depending on the part and the claimant, is as shown in the table below.

Limited Warranty (Years)		
Item	Original Owner	Subsequent Owner
Parts	10* (or 5)	5
Compressor	10* (or 5)	5

\*If properly registered within 90 days of original installation, otherwise 5 years (except in California and Quebec and other jurisdictions that prohibit warranty benefits conditioned on registration). See Warranty Conditions below.

### OTHER APPLICATIONS

The warranty period is five (5) years on the compressor, and one (1) year on all other parts. The warranty is the original owner only and is not available for subsequent owners.

### Ordering Information

Part Number	Description	Quantity
<b>Outdoor Unit</b>		
24ABB360A005	24ABB Comfort Series Air Conditioner with Puron Refrigerant 5 Tons Cooling 13 SEER @ ARI Conditions Dense Grille	1
<b>Accessories</b>		
KSALA0301410	Low-Ambient Pressure Switch for Outdoor Unit	1
KAACH1201AAA	Crankcase Heater for Outdoor Unit	1
KAAWS0101AAA	Winter Start Control for Outdoor Unit	1
<b>Indoor Coil</b>		
FV4CNB006L00	FV4C Performance Series Fan Coil with Puron 6 Tons Cooling	1

## Unit Report For SS - 6

Project: NIKE - Hershey, PA - 46

04/22/2022

Prepared By:

	208/230-1-60	
	Modular with 1-in. super thick insulation	
	Aluminum	
<b>Accessories</b>		
KFCEH2901N09	9 kW, Electric Heater, Non-fused, stageable, with relays for Indoor Unit	

**The Product and Ratings Data in this program is subject to change at any time and without notice. Please refer to the latest product literature and the AHRI directory at [www.ahridirectory.org](http://www.ahridirectory.org) for the most up-to-date information.**

# Performance Summary For SS - 6

Project: NIKE - Hershey, PA - 46  
Prepared By:

04/22/2022

## System Performance

<b>System:</b> .....	<b>24ABB/FV4C</b>	Actual Clg Airflow:.....	<b>1840.0</b>	CFM
System Quantity:.....	<b>1</b>	Standard Clg Airflow:.....	<b>1840.0</b>	CFM
Altitude:.....	<b>0.0</b> ft	Total Net Clg Capacity:.....	<b>52.03</b>	MBH
Linear Pipe Length:.....	<b>0.0</b> ft	Net Sensible Clg Capacity:.....	<b>38.39</b>	MBH
SEER @ ARI Conditions:.....	<b>13.5</b>	Total System Power:.....	<b>5.24</b>	kW
EER @ ARI Conditions:.....	<b>11.5</b>			

## System Parameters

### Outdoor Unit Parameters

Unit Model:..... **24ABB360A005**  
Unit Size (Nominal):..... **5 Tons (Size 60)**  
Voltage:..... **208/230-3-60** V-Ph-Hz  
Clg Ent Air DB Ambient:..... **100.0** °F

### Indoor Coil Parameters

Unit Model:..... **FV4CNB006L00**  
Unit Size (Nominal):..... **Size 006 (30 - 60,000 Btuh)**  
Voltage:..... **208-1-60** V-Ph-Hz  
Ent Air DB:..... **72.00** °F  
Ent Air WB:..... **60.00** °F  
Ent Enthalpy:..... **26.32** BTU/lb  
Lvg Air DB:..... **52.68** °F  
Lvg Air WB:..... **49.61** °F  
Lvg Enthalpy:..... **20.04** BTU/lb  
Heating Size (Nominal):..... **No Heat**  
Total External Static Pressure:..... **1.00** in wg  
Clg Coil Note:\*\*\***Airflow adjusted to high (400 cfm/ton).**

## Electrical Data

### Outdoor Electrical Data

Unit Voltage:..... **208/230-3-60** V-Ph-Hz  
Fan Motor FLA:..... **1.40** Amps  
MCA:..... **21.4** Amps  
Max Fuse:..... **30** Amps  
Operating Range Min:..... **187** V  
Operating Range Max:..... **253** V  
Compressor RLA:..... **16.0** Amps  
Compressor LRA:..... **110.0** Amps

### Indoor Electrical Data

Unit Voltage:..... **208-1-60** V-Ph-Hz  
Motor HP:..... **3/4** HP  
Motor FLA:..... **6.8** Amps

### Accessory Electric Heater Data

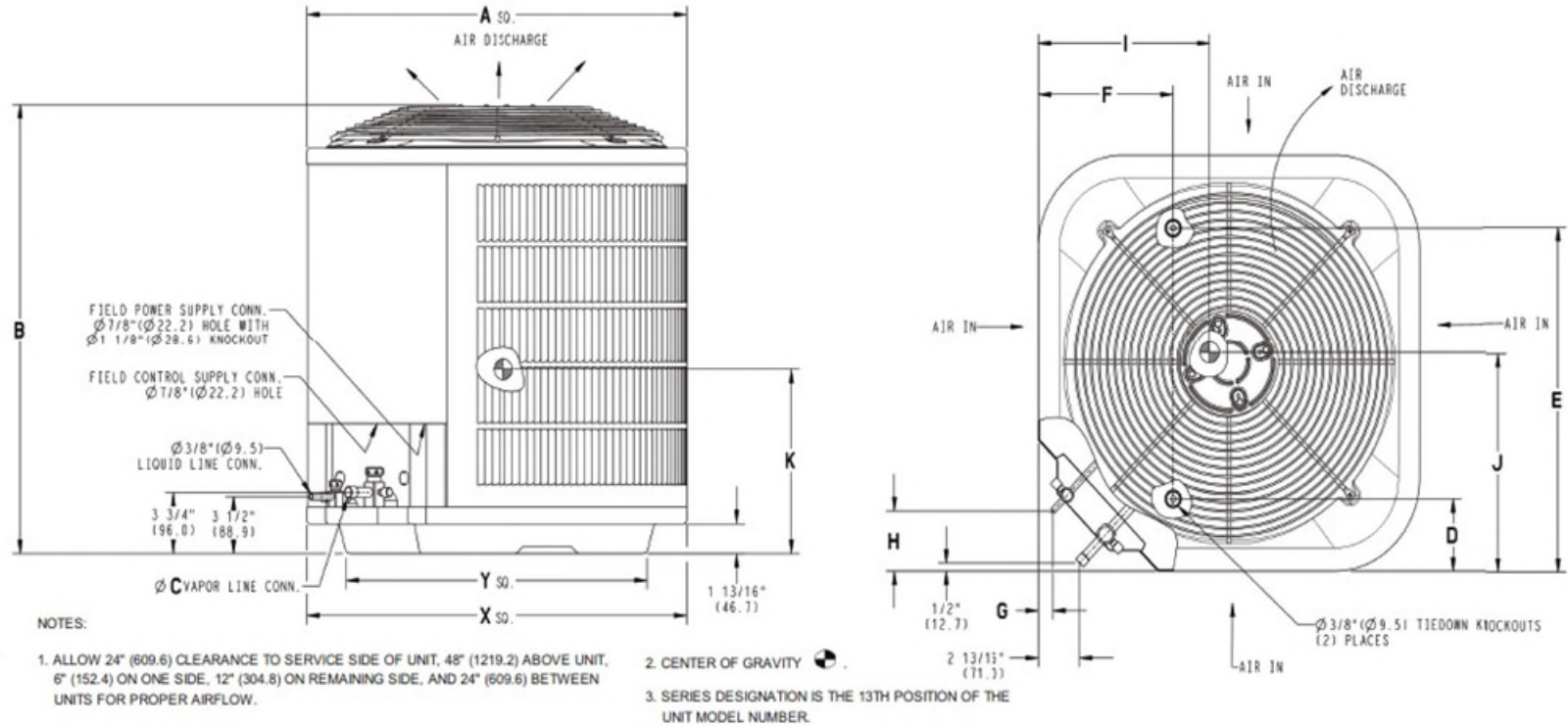
EH Part Number:..... **KFCEH2901N09**  
Electric Heater kW:..... **9.0** kW  
**For 2 wire operation (single circuit):**  
Heater Amps:..... **32.8** Amps  
Heater Capacity:..... **32.8** MBH  
Heater + Motor MCA:..... **49.5** Amps  
Heater + Motor MOCP:..... **50** Amps  
Accessory Voltage:..... **208-1-60** V-Ph-Hz

The Product and Ratings Data in this program is subject to change at any time and without notice. Please refer to the latest product literature and the AHRI directory at [www.ahridirectory.org](http://www.ahridirectory.org) for the most up-to-date information.

# Certified Drawing For SS - 6

Project: NIKE - Hershey, PA - 46  
 Prepared By:

04/22/2022



**Outdoor Model**

Unit Model:.....**24ABB**  
 Unit Size:.....**5 Tons (Size 60)**  
 Voltage:.....**208/230-3-60** V-Ph-Hz  
 SEER:.....**13**  
 PartNumber:.....**24ABB360A005**

Shipping Dimensions and Weights	Outdoor Unit
Height	33.19 in
Width	33.31 in
Length	33.31 in
Operating Weight	198. lb
Shipping Weight	230. lb

Dimensions										
A	B	C	D	E	F	G	H	I	J	K
31.19 in	28.69 in	0.88 in	6.56 in	24.69 in	9.13 in	0.31 in	3.00 in	16.00 in	15.50 in	12.75 in

The Product and Ratings Data in this program is subject to change at any time and without notice. Please refer to the latest product literature and the AHRI directory at [www.ahrirectory.org](http://www.ahrirectory.org) for the most up-to-date information.

# Certified Drawing For SS - 6

Project: NIKE - Hershey, PA - 46  
Prepared By:

04/22/2022

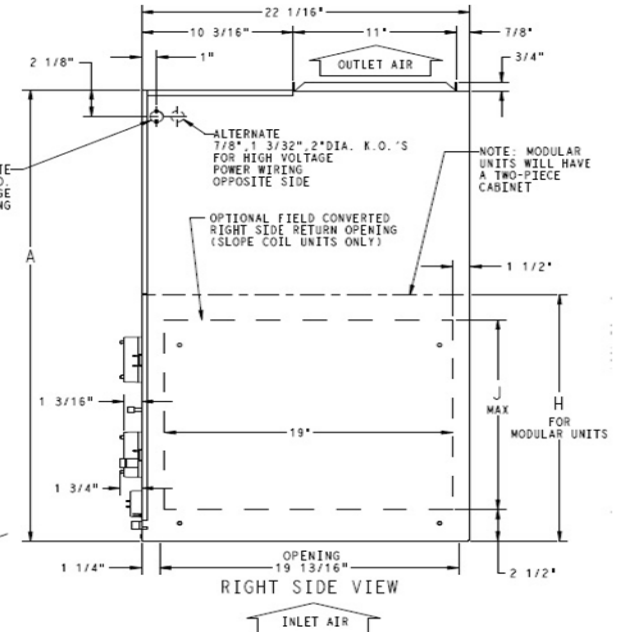
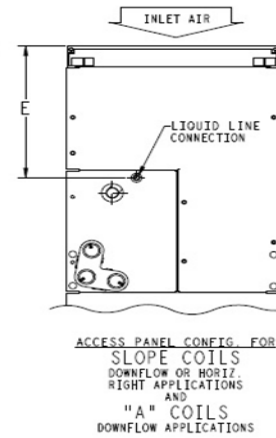
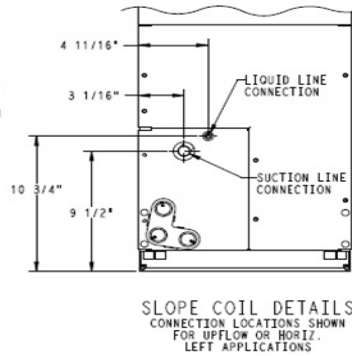
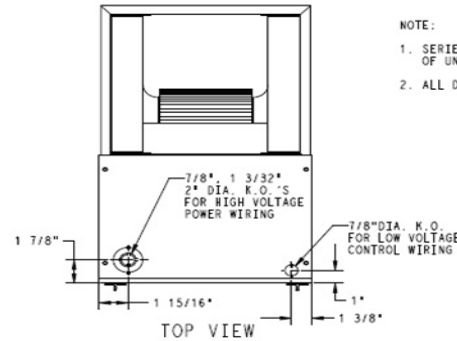
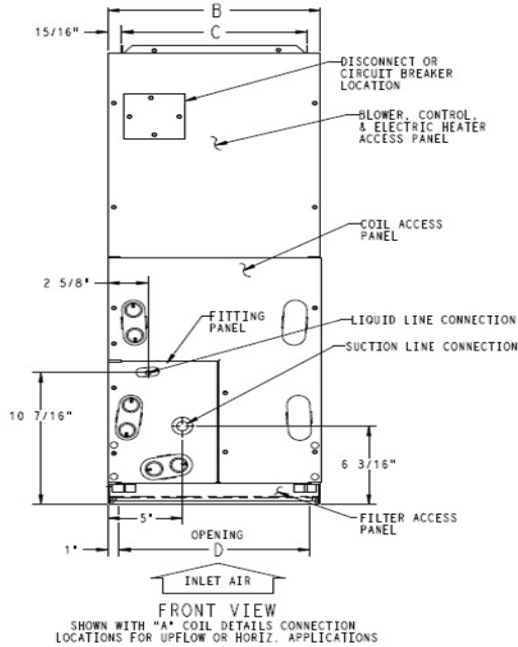
### UNIT CONNECTION SIZES

SUCTION: 018 & 024 - 5/8" I.D. SWEAT  
030 & 036 - 3/4" I.D. SWEAT  
042 THRU 060 - 7/8" I.D. SWEAT  
LIQUID: 3/8" I.D. SWEAT  
CONDENSATE: 3/4" FPT

NOTE:

1. SERIES DESIGNATION IS THE 14TH POSITION OF UNIT PRODUCT NUMBER
2. ALL DIMENSIONS ARE IN "INCHES" UNLESS NOTED.

NOTE: ALLOW 21" FROM FRONT FOR SERVICE



### Indoor Coil

Unit Model: **FV4C**  
Unit Size: **Size 006 (30 - 60,000 Btuh)**  
Voltage: **208-1-60** V-Ph-Hz  
Cabinet Insulation: **Modular with 1-in. super thick insulation**  
PartNumber: **FV4CNB006L00**

Dimensions and Weights		Indoor Coil
Height		59.19 in
Width		24.69 in
Length		22.06 in
Shipping Weight		207. lb

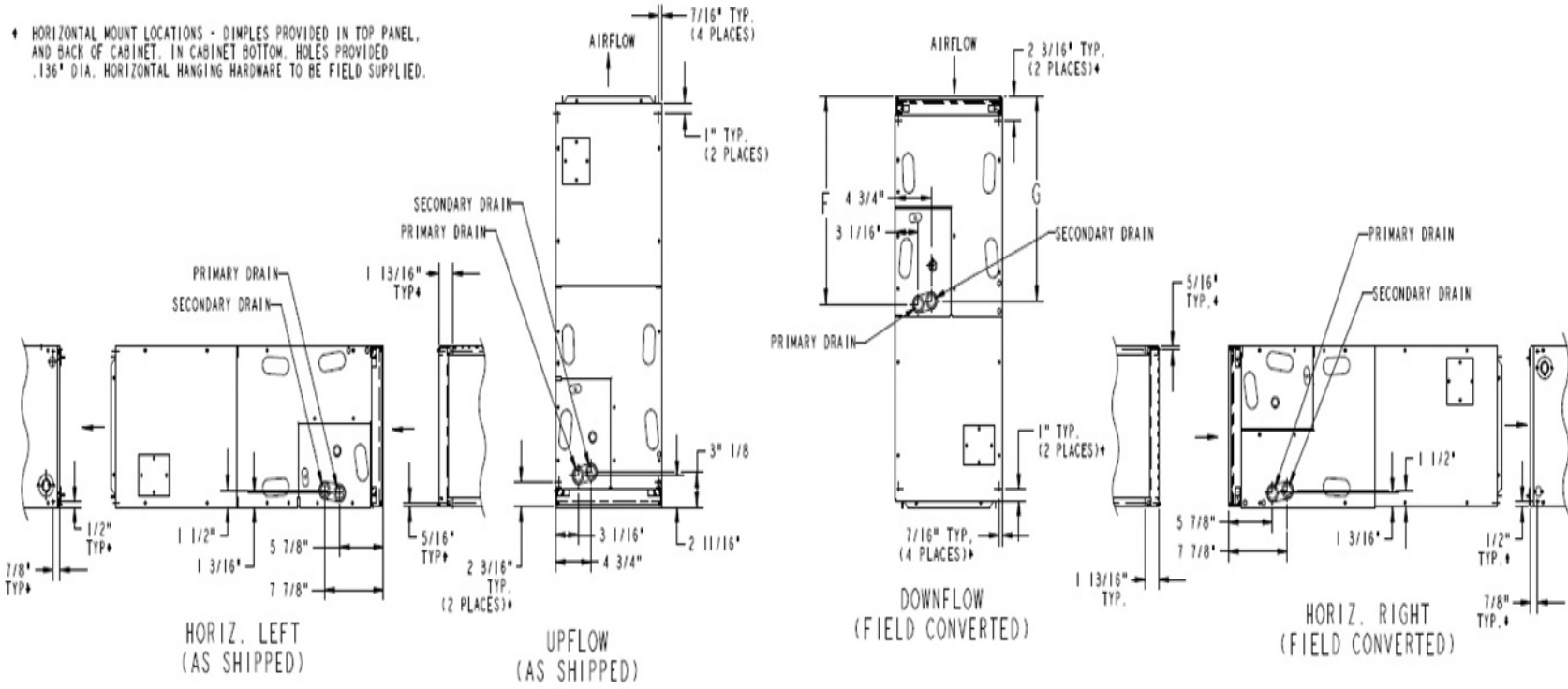
Dimensions									
A	B	C	D	E	F	G	H	J	
59.19 in	24.69 in	22.75 in	22.69 in	25.25 in	--	--	34.06 in	--	--

The Product and Ratings Data in this program is subject to change at any time and without notice. Please refer to the latest product literature and the AHRI directory at [www.ahrirectory.org](http://www.ahrirectory.org) for the most up-to-date information.

# Certified Drawing For SS - 6

Project: NIKE - Hershey, PA - 46  
 Prepared By:

04/22/2022



A-COIL

**Indoor Coil**

Unit Model:..... **FV4C**  
 Unit Size:..... **Size 006 (30 - 60,000 Btuh)**  
 Voltage:..... **208-1-60** V-Ph-Hz  
 PartNumber:..... **FV4CNB006L00**

The Product and Ratings Data in this program is subject to change at any time and without notice. Please refer to the latest product literature and the AHRI directory at [www.ahrirectory.org](http://www.ahrirectory.org) for the most up-to-date information.