

Architect:



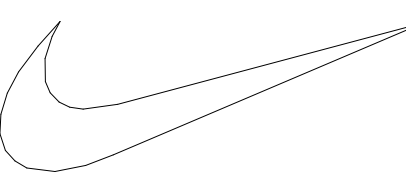
ARCHITECT OF RECORD:
BRR ARCHITECTURE, INC.
3131 WEDGEMAN
SUITE 300
OVERLAND PARK, KS 66204
www.brrarch.com

TEL 913-252-9095
FAX 913-252-9044
COPYRIGHT NOTICE
This drawing was prepared for use on a specific site contemporaneously with the issue date and is not suitable for use on any other project. Use of this drawing for reference or example on another project requires the services of a properly licensed architect and engineer. Reproduction of this drawing for reuse on another project is not authorized and may be contrary to the law.

Engineer:

HENDERSON
ENGINEERS
8345 LENEVA DRIVE, SUITE 300
LENEVA, KS 66214
TEL 913.742.5000 FAX 913.742.5001
WWW.HENDERSONENGINEERS.COM
2450004662

Project Owner:



NIKE, Inc.
One Bowerman Drive
Beaverton, OR 97005
(503) 671-6453
www.nike.com

Project Address:

NIKE
1911 LEESBURG GROVE CITY RD
#700
GROVE CITY, PA 16127

Stamp:

Issued For:

BID/PERMIT

Issue Date:

03/25/25

Revisions:

NO.	REASON	DATE

PROJECT MANAGER:

HEI

CHECKED BY:

HEI

DRAWN BY:

Author

Project Number:

62301565

Sheet Title:

MECHANICAL PLAN

Sheet Number:

M1.0

KEYNOTES ARE PROTOTYPICAL. MISSING KEYNOTE NUMBERS INDICATE A PROTOTYPICAL NOTE IS NOT USED OR REMOVED.

MECHANICAL PLAN NOTES

- M10 PROVIDE NEW ROOFTOP UNIT AS SCHEDULED WITH NEW CURB ADAPTER FROM EXISTING CURB. PROVIDE A NEW SET OF MERV 13 AIR FILTERS IN UNIT BEFORE TURNING SYSTEM OVER TO OWNER. COORDINATE CONDENSATE PIPING WITH DIVISION 22.
- M81 DUCT MOUNTED SMOKE DETECTORS ARE EXISTING AND SHALL REMAIN. SMOKE DETECTORS SHALL SHUT-DOWN UNIT UPON ALARM. VERIFY SMOKE DETECTORS ARE OPERATIONAL AND COORDINATE REPLACEMENT WITH DIVISION 28 AS NECESSARY.
- M82 RETURN AIR DUCTWORK IS EXISTING AND SHALL REMAIN UNLESS NOTED OTHERWISE. CLEAN EXISTING RETURN AIR DUCTWORK AND GRILLES AT COMPLETION OF CONSTRUCTION.
- M83 SUPPLY AIR DUCTWORK IS EXISTING AND SHALL REMAIN UNLESS NOTED OTHERWISE. CLEAN EXISTING SUPPLY AIR DUCTWORK AND REGISTERS AT COMPLETION OF CONSTRUCTION.
- M88 COORDINATE LOCATIONS OF EXISTING HUMIDITY SENSOR AND CO2 SENSORS WITHIN SPACE. COORDINATE WITH EMS VENDOR TO PROVIDE NEW IF EXISTING DEVICES ARE NOT INSTALLED.

FABRIC DUCT GENERAL NOTES:
PROVIDE FABRIC DUCT THROUGHOUT THE SPACE AS SHOWN ON PLAN. FABRIC DUCT SHALL NOT REPLACE RECTANGULAR DUCT DROPS OR EXHAUST DUCTS. BASIS OF DESIGN SHALL BE "PRIHODA", "NMI" NONPOROUS FABRIC WITH "PERFORATIONS" (AIR OPENINGS) WITH ADJUSTABLE FLOW DEVICES (I.E. AFS) AT OPENINGS, AND ONE ROW, GALVANIZED CABLE. INTERNAL HOOP SUPPORT SYSTEM SHALL BE PROVIDED ON ALL FABRIC DUCT UNLESS NOTED OTHERWISE. INCLUDE ALL COMPONENTS AND ACCESSORIES REQUIRED TO MAKE A COMPLETE SYSTEM AS RECOMMENDED BY PRIHODA DURING BID PHASE, INCLUDING HANGING STRAPS AND CLIPS, END-CAPS, CONNECTIONS TO METAL DUCTS, ETC. PRIHODA FABRIC DUCT SHALL BE SIZED PER FACTORY RECOMMENDATIONS TO PROVIDE MINIMUM AIRFLOWS IN BRANCH DUCTS AS SHOWN. CONFIRM FABRIC DUCT COLOR WITH ARCHITECT PRIOR TO ORDERING ON ALL PROJECTS. (FOR UNITS FURNISHED WITH WHITE AS BASIS OF DESIGN) (FOR GLOBAL 3.0 FIXTURE PACKAGE, PANTONE 420 - LIGHT GREY IS BASIS OF DESIGN). CONTACT PRIHODA SALES DEPARTMENT (E-MAIL: SALES@PRIHODA-NA.COM, PHONE: 1-655-774-6632) FOR PRICING INFORMATION.

FABRIC DUCT DESIGN GUIDELINE:
DISTRIBUTE AIRFLOW EVENLY ALONG FABRIC DUCT IN THE DIRECTION OF FLOW ARROWS. ORIENT AND SIZE FABRIC DUCT DIFFUSER OPENINGS TO PROVIDE A 50 FPM FLOW VELOCITY HALF WAY TO THE NEAREST ADJACENT FABRIC DUCT OR TO THE NEAREST PARTITION/DEMISING WALL AS APPLICABLE. VENTS ON FABRIC DUCT SHALL BE LOCATED AT 22.5 DEGREES BELOW HORIZONTAL UNLESS NOTED OTHERWISE.

FABRIC DUCT COORDINATION NOTE:
DURING THE FIRST WEEK OF THE PROJECT, THE GENERAL CONTRACTOR'S SUPERINTENDENT, MECHANICAL SUB-CONTRACTOR, AND A REPRESENTATIVE FROM "PRIHODA" SHALL MEET AT THE PROJECT SITE FOR CONFIRMATION OF ALL FIELD DIMENSIONS AND POTENTIAL OBSTRUCTIONS. THIS EVENT MUST PRECEDE THE ORDERING OF ANY MATERIALS FROM "PRIHODA". CHANGE ORDERS AND EXPEDITING FEES WILL NOT BE APPROVED DUE TO LACK OF ON-SITE COLLABORATION AND/OR MEASUREMENT DURING SITE MEETING AT PROJECT COMMENCEMENT.

FABRIC DUCT INSTALLATION NOTE:
INSTALL FABRIC DUCT ABOVE ARCHITECTURAL LIGHTING SYSTEM. COORDINATE FABRIC DUCT INSTALLATION WITH GENERAL CONTRACTOR AND DIVISION 26. GENERAL CONTRACTOR SHALL VERIFY FABRIC DUCT IS INSTALLED SUCH THAT IT DOES NOT CLASH WITH ARCHITECTURAL LIGHTING SYSTEM, INCLUDING LIGHT FIXTURES, ARCHITECTURAL LIGHTING SYSTEM GRID AND SUSPENSION CABLES, OR ANY OTHER SUSPENDED FIXTURES WHEN DEFLATED.

THE DUCTWORK LAYOUT INDICATED ON THE DRAWINGS IS SCHEMATIC AND SHOWS DESIGNED INTENT ONLY. PRIOR TO FABRICATION AND INSTALLATION OF DUCTWORK, DIVISION 23 SHALL HAVE A QUALIFIED, EXPERIENCED SKETCHER PREPARE AND SUBMIT SHEET METAL SHOP DRAWINGS. SHOP DRAWINGS SHALL TAKE INTO ACCOUNT ALL EXISTING CONDITIONS, INCLUDING BUT NOT LIMITED TO, STRUCTURAL MEMBERS, CONDUITS AND PIPING TO REMAIN. SHOP DRAWINGS SHALL ALSO TAKE INTO ACCOUNT ALL NEW DESIGN CONDITIONS, INCLUDING BUT NOT LIMITED TO, STRUCTURAL MEMBERS, PIPING, CELLINGS, SOFFIT HEIGHTS, AND LIGHT FIXTURES.

SHOP DRAWINGS SHALL INDICATE ALL REVISIONS TO THE LAYOUT REQUIRED TO ACCOMMODATE THE EXISTING CONDITIONS AND/OR MAINTAIN THE CEILING HEIGHTS AND CLEARANCES REQUIRED. NOTIFY THE ARCHITECT AND ENGINEER OF ANY LOCATION WHERE THE DESIGN INTENT CANNOT BE MET PRIOR TO FABRICATION AND INSTALLATION OF DUCTWORK. REVISIONS TO DUCTWORK, EQUIPMENT, CONDUIT AND/OR PIPING REQUIRED BY CONTRACTOR'S FAILURE TO SUBMIT PROPERLY PREPARED SHOP DRAWINGS SHALL BE THE RESPONSIBILITY OF DIVISION 23 AT NO ADDITIONAL COST TO THE CLIENT OR DELAY TO THE PROJECT SCHEDULE.

GENERAL CONTRACTOR IS RESPONSIBLE FOR PROVIDING TO ARCHITECT, ENGINEER, LANDLORD, AND BUILDING OFFICIAL/INSPECTOR A FINAL TEST AND BALANCE REPORT PER THE SPECIFICATIONS. PROVIDE TEST AND BALANCE REPORT TO ARCHITECT, ENGINEER, AND LANDLORD PRIOR TO THE FINAL BUILDING INSPECTION.

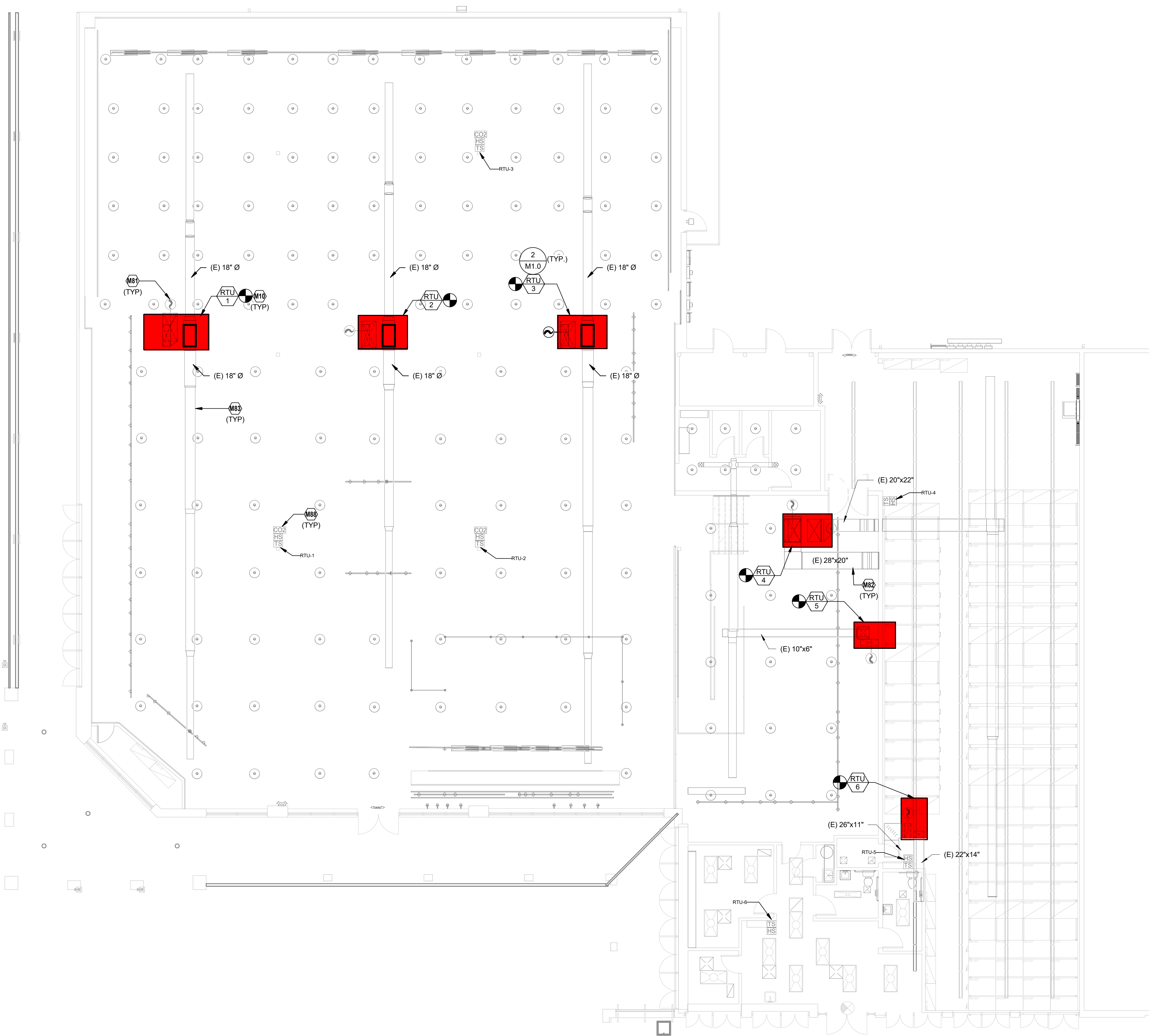
LANDLORD REQUIREMENTS:
LANDLORD APPROVED ROOFING CONTRACTOR SHALL BE RESPONSIBLE FOR MAKING ALL CUTS THROUGH THE EXISTING ROOF. MODIFYING EXISTING OPENINGS, AND/OR ALTERING CURB FLASHING AT GENERAL CONTRACTOR'S EXPENSE. COORDINATE WITH GENERAL CONTRACTOR.

EMS CONTROLS:
CONTRACTORS ARE RESPONSIBLE FOR COORDINATING ALL EQUIPMENT CONTROLS WITH EMS VENDOR PRIOR TO PURCHASE AND INSTALLATION. CONTRACTORS SHALL COORDINATE WITH EMS VENDOR TO PROVIDE ALL NECESSARY EQUIPMENT AND ACCESSORIES FOR A FULLY FUNCTIONING SYSTEM.

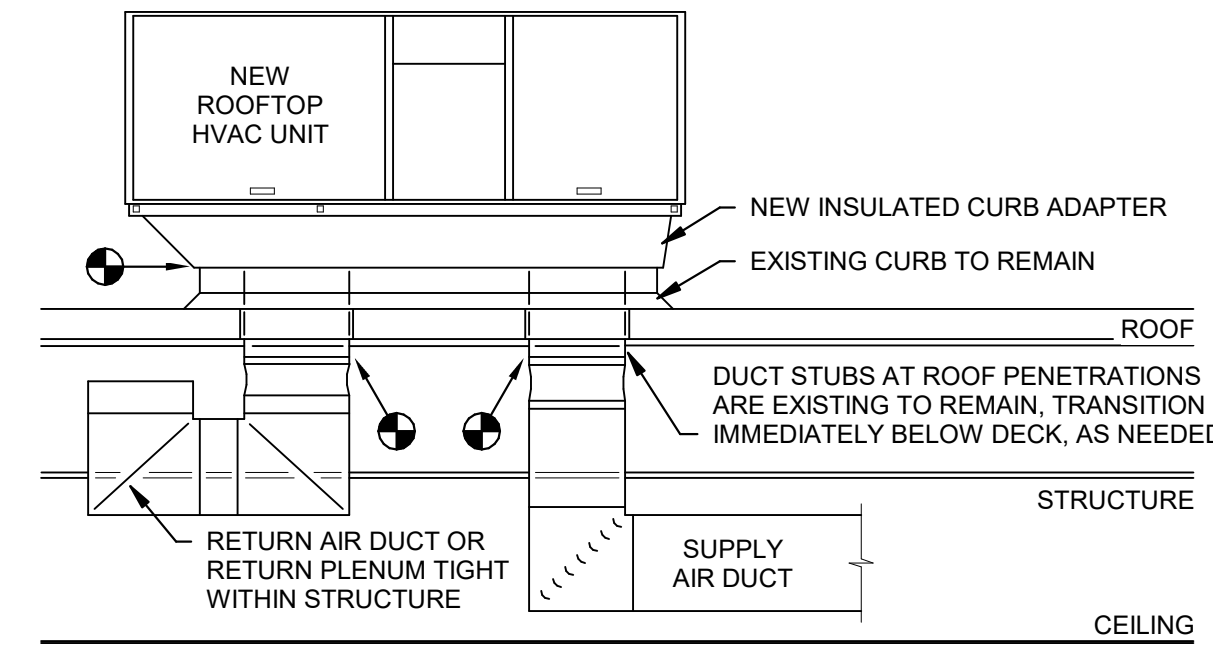
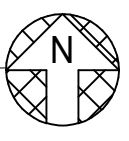
TEMPERATURE CONTROLS:
EMS VENDOR SHALL FURNISH SENSORS AND CONTROL COMPONENTS AS INDICATED ON PLANS AND AS NECESSARY TO ACCOMPLISH THE INTENT OF THE DRAWINGS. ALL CONTROLS SHALL BE TIED INTO THE EMS SYSTEM UNLESS NOTED OTHERWISE.

GENERAL CONTRACTOR SHALL INSTALL CARRIER FURNISHED TEMPORARY THERMOSTATS AND FEED THE WIRING DOWN INTO THE SPACE FOR START UP AND CONTROL OF RTU(S) UNTIL THE EMS SYSTEM IS OPERABLE. REFER TO M3.0 FOR CARRIER CONTACT INFORMATION.

INSTALL DUCTWORK AND PIPING AS TIGHT TO STRUCTURE AS POSSIBLE. COORDINATE WITH OTHER TRADES TO AVOID CONFLICTS. COORDINATE INSTALLATION OF DUCTWORK AND PIPING TO AVOID CONFLICTS WITH ELECTRICAL PANELS, LIGHTING FIXTURES, ETC. DO NOT INSTALL DUCTWORK BELOW THE BOTTOM OF THE LIGHT FIXTURES.



1 HVAC PLAN
1/8" = 1'-0"



- NOTES:
- CURB ADAPTER SHALL INCLUDE ALL REQUIRED SUPPLY AND RETURN DUCT TRANSITIONS TO ENABLE THE NEW ROOFTOP TO BE INSTALLED WITHOUT NECESSITATING DUCT MODIFICATIONS BELOW THE ROOF.
 - INSTALL ADAPTER CURB AND ROOFTOP UNIT IN A MANNER THAT ENSURES A WEATHER TIGHT INSTALLATION.

2 ROOFTOP UNIT - CURB ADAPTER DETAIL