

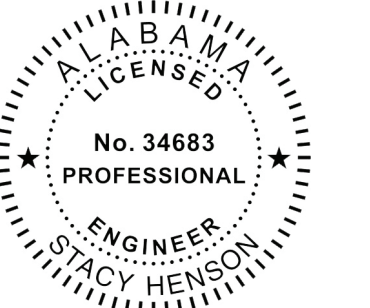


Chick-fil-A
5200 Buffington Road
Atlanta, Georgia
30349-2998

INTERPLAN
ARCHITECTURE
ENGINEERING
INTERIOR DESIGN
PROJECT MANAGEMENT

604 COURTLAND STREET
SUITE 100
ORLANDO, FLORIDA 32834
PH 407.645.5008
FX 407.629.9124

SEAL:



CHICK-FIL-A
HOOVER COMMONS FSR
1609 MONTGOMERY HIGHWAY
HOOVER, AL 35216

FSR#00822

BUILDING TYPE / SIZE: P13 LSR ALL
RELEASE: v2_20_02

REVISION SCHEDULE

NO.	DATE	DESCRIPTION
1	01/08/20	GREASE REVIEW
5	02/24/21	OWNER REVISION
12	10/22/21	OWNER COMMENTS

CONSULTANT PROJECT # 2019.0323
PRINTED FOR FOR CONSTRUCTION
DATE 08/03/2020
DRAWN BY JI

Information contained on this drawing and in all digital files produced for above named project may not be reproduced in any manner without express written or verbal consent from authorized project representatives.

SHEET WATER PIPING PLAN

SHEET NUMBER

P-201

CHRHR - 11/04/2021 12:37:48 PM

KEY NOTES

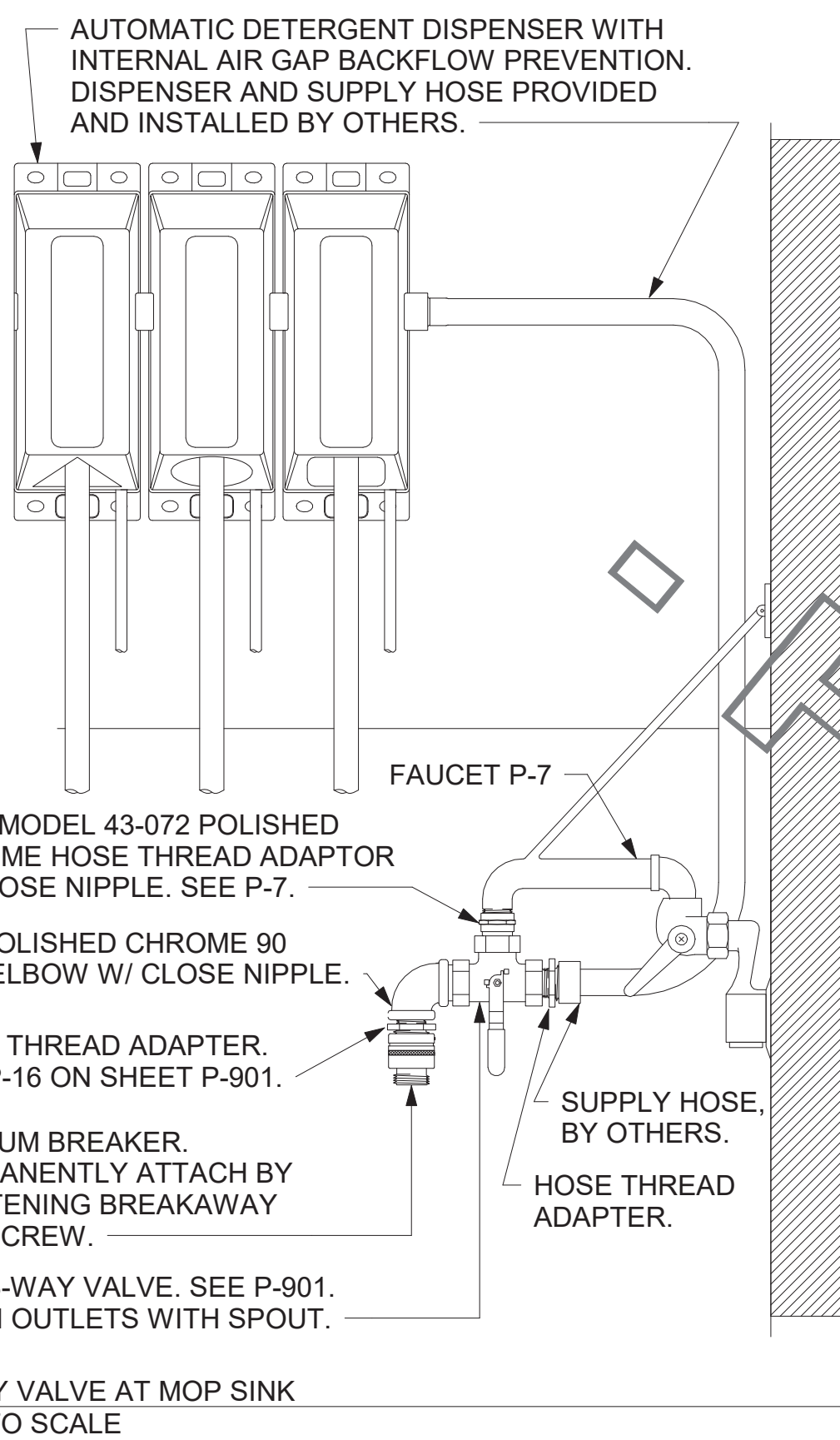
- OWNER PROVIDED, PLUMBER INSTALLED STOP/BFP PANEL. SEE K-SHEET ELEVATIONS FOR EXACT LOCATION. PROVIDE EXPOSED 3/4" BALL VALVE AT CONNECTION TO PANEL. ROUTE 1" PVC DRAIN FROM FACTORY PANEL DRAIN CONNECTION TO P-26 FUNNEL DRAIN AT END OF BEVERAGE RACK AND TERMINATE WITH ELBOW AND AIR GAP.
- OWNER PROVIDED, PLUMBER INSTALLED WATER FILTERS. SEE DETAIL 5/P-303.
- FW AND FW2 FROM WATER FILTERS. SEE DETAIL 5/P-303.
- 3/4" FW DROP TO TWO-HANDLE FAUCET, P-30. MOUNT FAUCET ON WALL. SEE K-SHEETS FOR EXACT LOCATION. PIPE 1/2" FW TO EACH FAUCET INLET WITH 6" SPREAD. PROVIDE BALL VALVE ABOVE CEILING. SEE RISER DIAGRAM 1/P-302.
- P-11 WALL HYDRANT 24" AFF WITH BALL VALVE IN DROP 48" AFF. ORDER HYDRANT WITH 12" WOODFORD WALL THICKNESS. SEE WATER RISER 1/P-302.
- TURN 3/4" CONDENSATE PIPING OUT OF COOLER AND EXTEND OUTLET TO P-12 FUNNEL DRAIN. SECURE PIPING TO COOLER/FREEZER WALL WITH RUBBER INSULATED PIPE CLAMPS TO PREVENT GALVANIC CORROSION. SEAL ALL PENETRATIONS IN WALLS WITH PERMAGUM CORD. TERMINATE ABOVE FUNNEL WITH ELBOW AND AIR GAP. PROVIDE P-TRAP IN CONDENSATE DRAIN OUTSIDE COOLER WITH OPEN-TOPPED TEE AT TRAP OUTLET.
- SEE 6/P-303 FOR P-19 WATER HEATER, AND P-38 HOT WATER CIRCULATING PUMP. COORDINATE WATER AND DWV PIPING IN THIS AREA WITH HVAC DUCT. SEE M-201 FOR DUCT LAYOUT.
- 1/2" FW TO P-24 & P-34 AT TWO TEA BREWERS AND ONE COFFEE MAKER. SEE 4/P-211 AND 1/P-302.
- APPLY RAYCHEM XL-TRACE, MODEL 5XL-1, SELF REGULATING HEATING CABLE. USE END SEAL KIT FROM MFR. PROVIDE P-TRAP IN CONDENSATE DRAIN ON COOLER SIDE OF COOLER-FREEZER PANEL WALL WITH OPEN-TOPPED TEE AT TRAP OUTLET. PROVIDE 6" OF FALL IN FREEZER DRAIN LINE PRIOR TO PENETRATING PANEL WALL. EXTEND HEAT TRACE TO P-TRAP OUTLET IN COOLER.
- 1" DIAMETER PVC DRAIN FROM BACKFLOW PREVENTER PANEL. CONNECT 1" PVC TO FACTORY PROVIDED COUPLING MOUNTED ON BACK PANEL. ROUTE DRAIN TO P-26 FUNNEL DRAIN AT END OF BAG-N-BOX. MOUNT PIPING TIGHT TO WALL WITH STRUT AND CLAMP.
- 1/2" HW AND CW DROPS TO MOP SINK FAUCET SET P-7. PROVIDE BALL VALVE FOR EACH ABOVE CEILING WITH P-22 BALL CHECK VALVE IN EACH DROP. SEE RISER DIAGRAM 1/P-302.
- INSTALL P-16 3-WAY VALVE WITH BACKFLOW PREVENTER ON P-7 FAUCET SPOUT FOR CONNECTION TO ECOLAB DETERGENT DISPENSER. SEE DETAIL 4/P-201.
- 1" GAS DOWN FROM ROOF FOR P-19. SEE 6/P-303 FOR CONTINUATION. OFFSET DROP WITHIN WALL ABOVE MECH ROOM CEILING.
- 2" CW ON WALL. SEE 4/P-303 FOR EXACT ROUTING LOCATIONS OF CW PIPING IN THIS AREA.

3. SHEET NOTES

- COORDINATE VENT TERMINAL LOCATIONS WITH FRESH AIR HOODS ON ROOFTOP EQUIPMENT SO AS TO MAINTAIN MINIMUM 15'-0" CLEARANCE.
- HOLD ALL PIPING ABOVE THE CEILING TIGHT TO STRUCTURE. DUCT LOCATIONS TAKE PRIORITY. SEE DRAWING M-201 FOR DUCT LAYOUT. COORDINATE CONFLICTS WITH GC.
- SEE K-SHEET ELEVATIONS FOR KITCHEN EQUIPMENT WATER PIPING ROUGH-IN LOCATIONS.
- SEE SHEET P-211 FOR BEVERAGE CONDUIT PIPING.
- SEE RISER DIAGRAM 1/P-301 FOR VENT PIPING. SEE ROOF PLAN 1/P-250 FOR VENT THRU ROOF (VTR) LOCATION.
- VERIFY WALL TYPE AND WALL THICKNESS AT EXTERIOR HOSE BIBBS PRIOR TO ORDERING EQUIPMENT.
- WATER HEATER PIPING IS SHOWN FOR STATE/A.O. SMITH MODELS WITH SIDE INLET/OUTLET CONNECTIONS. ADJUST PIPING AS NEEDED TO ACCOMMODATE OTHER CONNECTION POINTS WHEN ALTERNATE MODELS ARE PROVIDED.
- COORDINATE ABOVE-CEILING PIPING LOCATIONS AND ROUTING WITH HVAC CONTRACTOR AND M-SHEETS PRIOR TO INSTALLATION. ALL MAIN DUCT TRUNK LOCATIONS SHALL TAKE PRIORITY. PIPING MAY REQUIRE REMOVAL AND REINSTALLATION AT PLUMBING CONTRACTOR'S EXPENSE IF PIPING OBSTRUCTS THE M-SHEET DUCT LAYOUT AS SHOWN OR PREVENTS ACCESS TO GREASE DUCT CLEANOUT OPENINGS.

WALK-IN CONDENSATE PIPING NOTES:

INSTALL PIPING TIGHT TO WALL SO AS NOT TO INTERFERE WITH COOLER AND FREEZER SHELVES. PROVIDE UNION FITTINGS IMMEDIATELY DOWNSTREAM OF CONNECTION TO EVAPORATORS.



AUTOMATIC DETERGENT DISPENSER WITH INTERNAL AIR GAP BACKFLOW PREVENTION. DISPENSER AND SUPPLY HOSE PROVIDED AND INSTALLED BY OTHERS.

FAUCET P-7

T & S MODEL 43-072 POLISHED CHROME HOSE THREAD ADAPTOR W/ CLOSE NIPPLE. SEE P-7.

3/4" POLISHED CHROME 90 DEG ELBOW W/ CLOSE NIPPLE.

HOSE THREAD ADAPTER. SEE P-16 ON SHEET P-901.

SUPPLY HOSE. BY OTHERS.

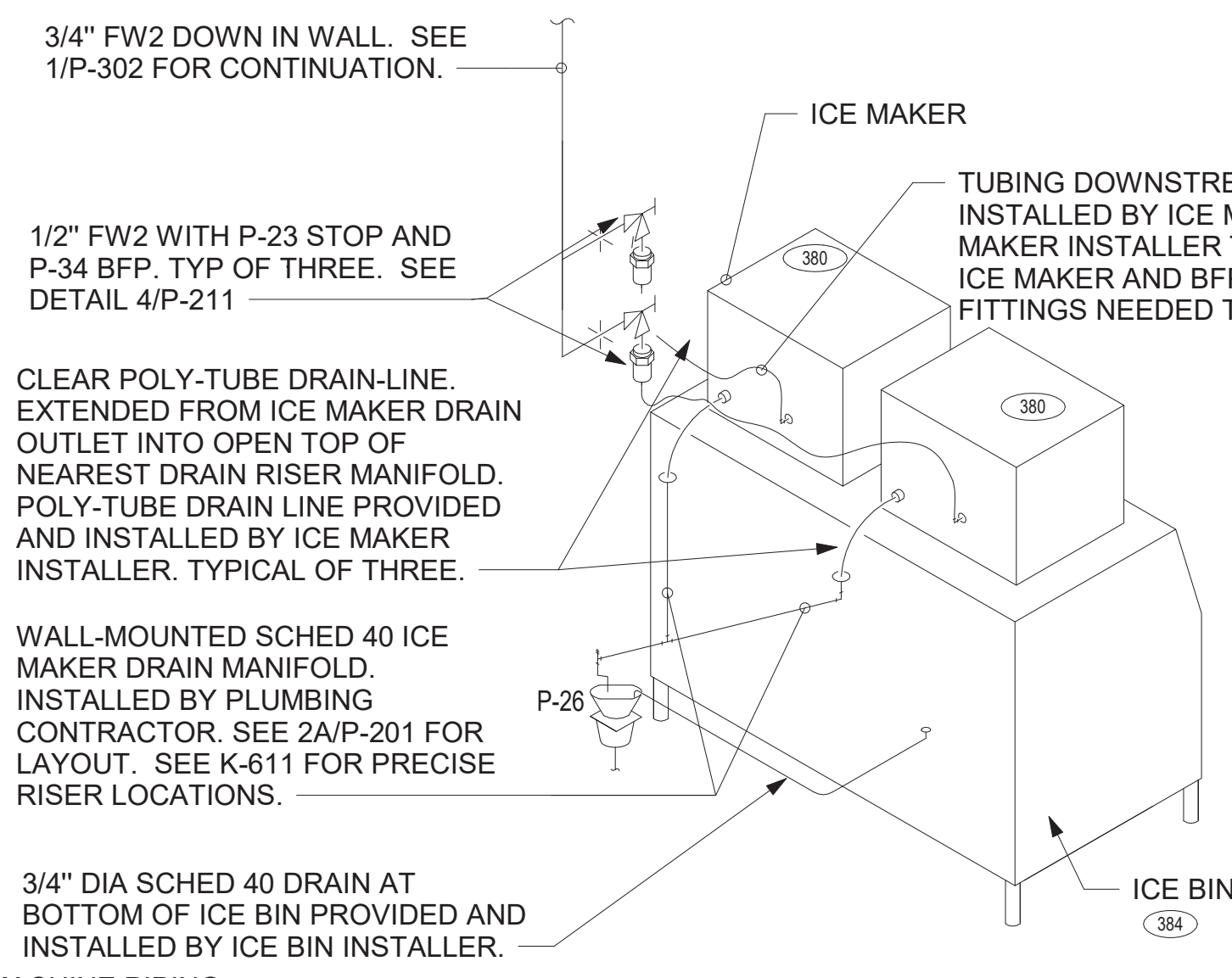
HOSE THREAD ADAPTER.

VACUUM BREAKER. PERMANENTLY ATTACH BY TIGHTENING BREAKAWAY SET SCREW.

P-16 3-WAY VALVE. SEE P-901. ALIGN OUTLETS WITH SPOUT.

3-WAY VALVE AT MOP SINK NOT TO SCALE

NOTE TO WATER HEATER INSTALLER:
POSITION VALVES AND TRIM IN WATER HEATER CLOSET SUCH THAT VISIBLE OBSERVATION OF VALVES AND TRIM IS UNOBSTRUCTED AND SUCH THAT ACCESS FOR OPERATION OR REPAIR IS POSSIBLE WITHOUT USE OF STEP LADDERS OR ANY NEED TO DISASSEMBLE ANY COMPONENTS.



3/4" FW2 DOWN IN WALL. SEE 1/P-302 FOR CONTINUATION.

ICE MAKER

TUBING DOWNSTREAM OF BFP PROVIDED AND INSTALLED BY ICE MAKER INSTALLER. ICE MAKER INSTALLER TO CONNECT TUBING TO ICE MAKER AND BFP'S AND PROVIDE ADAPTER FITTINGS NEEDED TO DO SO.

1/2" FW2 WITH P-23 STOP AND P-34 BFP. TYP OF THREE. SEE DETAIL 4/P-211

CLEAR POLY-TUBE DRAIN-LINE EXTENDED FROM ICE MAKER DRAIN OUTLET INTO OPEN TOP OF NEAREST DRAIN RISER MANIFOLD. POLY-TUBE DRAIN LINE PROVIDED AND INSTALLED BY ICE MAKER INSTALLER. TYPICAL OF THREE.

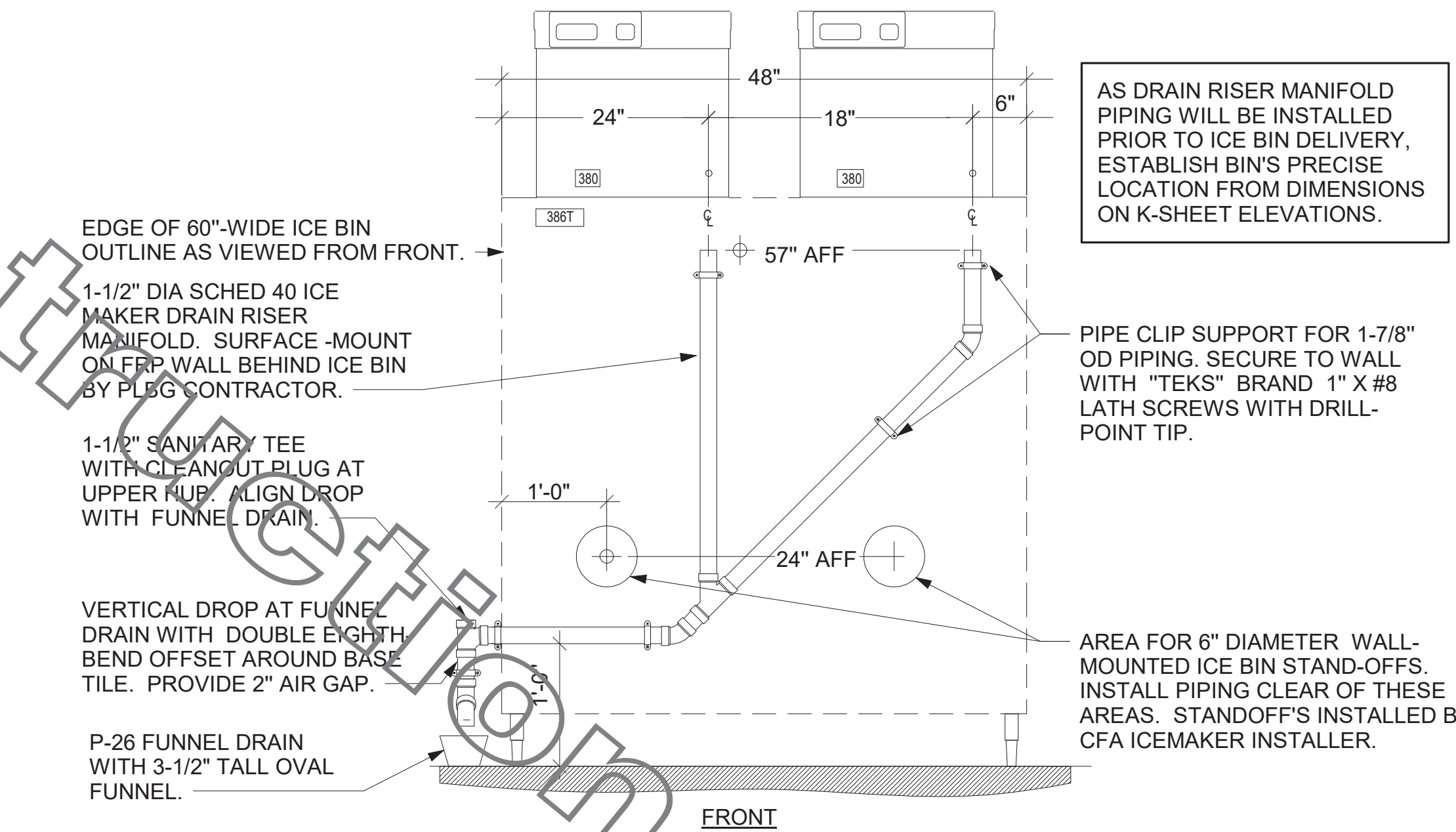
WALL-MOUNTED SCHED 40 ICE MAKER DRAIN MANIFOLD. INSTALLED BY PLUMBING CONTRACTOR. SEE 2A/P-201 FOR LAYOUT. SEE K-611 FOR PRECISE RISER LOCATIONS.

3/4" DIA SCHED 40 DRAIN AT BOTTOM OF ICE BIN PROVIDED AND INSTALLED BY ICE BIN INSTALLER.

ICE MACHINE PIPING NOT TO SCALE

ICE BIN

DRAIN RISER LOCATIONS MEASURED FROM EDGE OF ICE BIN. VERIFY ICE BIN WIDTH AND PRECISE LOCATION FROM DIMENSIONS ON K-SHEET ELEVATIONS.



EDGE OF 60" WIDE ICE BIN OUTLINE AS VIEWED FROM FRONT.

1-1/2" DIA SCHED 40 ICE MAKER DRAIN RISER MANIFOLD. SURFACE-MOUNT ON FRP WALL BEHIND ICE BIN BY PLUMBING CONTRACTOR.

1-1/2" SANITARY TEE WITH CLEANOUT PLUG AT UPPER END. ALIGN DROP WITH FUNNEL DRAIN.

VERTICAL DROP AT FUNNEL DRAIN WITH DOUBLE EIGHT BEND OFFSET AROUND BASE TILE. PROVIDE 2" AIR GAP.

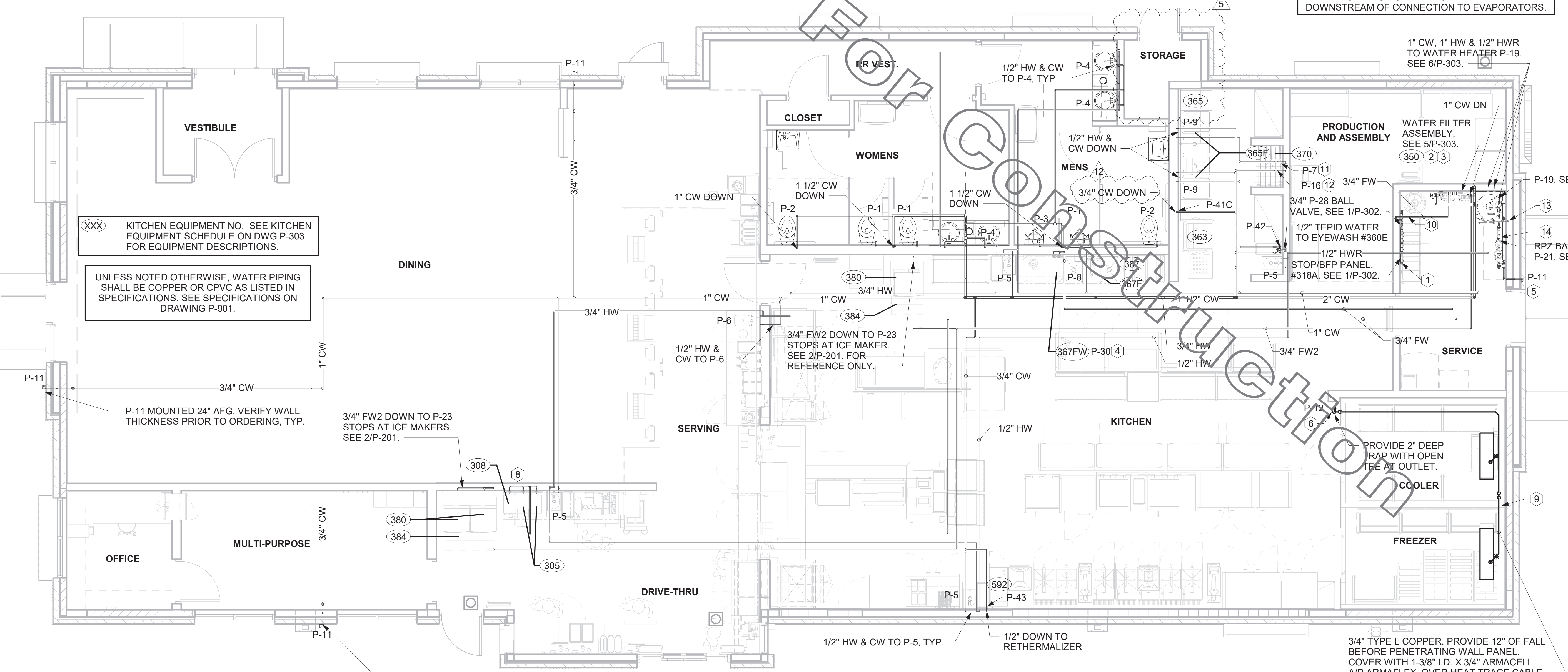
P-26 FUNNEL DRAIN WITH 3-1/2" TALL OVAL FUNNEL.

ICE MAKER DRAIN ON WALL NOT TO SCALE

AS DRAIN RISER MANIFOLD PIPING WILL BE INSTALLED PRIOR TO ICE BIN DELIVERY. ESTABLISH BIN'S PRECISE LOCATION FROM DIMENSIONS ON K-SHEET ELEVATIONS.

PIPE CLIP SUPPORT FOR 1-7/8" OD PIPING. SECURE TO WALL WITH "TEKS" BRAND 1" X #8 LATH SCREWS WITH DRILL-POINT TIP.

AREA FOR 6" DIAMETER WALL-MOUNTED ICE BIN STAND-OFFS. INSTALL PIPING CLEAR OF THESE AREAS. STANDOFFS INSTALLED BY CFA ICEMAKER INSTALLER.



XXX KITCHEN EQUIPMENT NO. SEE KITCHEN EQUIPMENT SCHEDULE ON DWG P-303 FOR EQUIPMENT DESCRIPTIONS.

UNLESS NOTED OTHERWISE, WATER PIPING SHALL BE COPPER OR CPVC AS LISTED IN SPECIFICATIONS. SEE SPECIFICATIONS ON DRAWING P-901.

P-11 MOUNTED 24" AFG. VERIFY WALL THICKNESS PRIOR TO ORDERING, TYP.

3/4" FW2 DOWN TO P-23 STOPS AT ICE MAKERS. SEE 2/P-201.

P-11 MOUNTED 24" AFG. VERIFY WALL THICKNESS PRIOR TO ORDERING, TYP.

PROVIDE 2" DEEP TRAP WITH OPEN TEE AT OUTLET.

3/4" TYPE L COPPER. PROVIDE 12" OF FALL BEFORE PENETRATING WALL PANEL. COVER WITH 1-3/8" I.D. X 3/4" ARMACELL A/P ARMAFLEX OVER HEAT TRACE CABLE.

FOR CONSTRUCTION

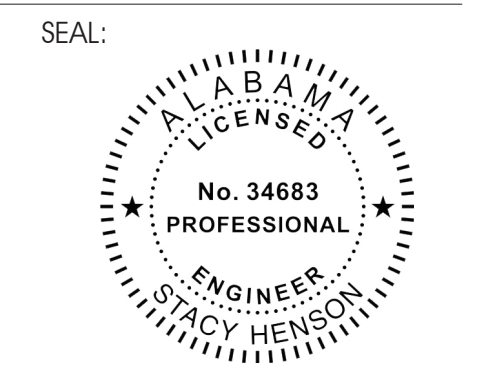
COPYRIGHT © 2019 INTERPLAN, LLC. RESERVES COPYRIGHT & OTHER RIGHTS RESTRICTING THESE DOCUMENTS TO THE ORIGINAL SITE OR PURPOSE FOR WHICH THEY WERE PREPARED. REPRODUCTIONS, CHANGES OR ASSIGNMENTS ARE PROHIBITED.



Chick-fil-A
 5200 Buffington Road
 Atlanta, Georgia
 30349-2998

INTERPLAN
 ARCHITECTURE
 ENGINEERING
 INTERIOR DESIGN
 PROJECT MANAGEMENT

604 COURTLAND STREET
 SUITE 100
 ORLANDO, FLORIDA 32834
 PH 407.645.5008
 FX 407.629.9124



CHICK-FIL-A
HOOPER COMMONS FSR
 1609 MONTGOMERY HIGHWAY
 HOOPER, AL 35216

FSR#00822
 BUILDING TYPE / SIZE: P13 LSR ALL
 RELEASE: v2_20_02

REVISION SCHEDULE		
NO.	DATE	DESCRIPTION
1	01/08/20	GREASE REVIEW
5	02/24/21	OWNER REVISION
7	04/14/21	OWNER REVISION

FOR CONSTRUCTION

CONSULTANT PROJECT # 2019.0323
 PRINTED FOR FOR CONSTRUCTION
 DATE 08/03/2020
 DRAWN BY JI

Information contained on this drawing and in all digital files produced for above named project may not be reproduced in any manner without express written or verbal consent from authorized project representatives.

SHEET
SLAB ROUGH-IN PLAN

SHEET NUMBER
P-221
 CHRHR - 09/27/2021 5:19:20 PM

NOTE OF SPECIAL IMPORTANCE:
 BELOW-SLAB BEVERAGE CONDUIT SHALL BE 6" DIAMETER SCHED 40 DWV SOLID WALL, NO FOAM CORE ALLOWED. USE LONG RADIUS ELBOWS (A.K.A. SWEEPS) ON ALL BEVERAGE CONDUIT. PLEASE NOTE BEVERAGE CONDUIT ROUGH-IN LOCATIONS ARE MEASURED TO THE FRACTION OF AN INCH. CARE MUST BE TAKEN WHEN INSTALLING 6" DIAMETER CONDUIT LOCATED WITHIN A 2X8 WALL. THE MARGIN FOR ERROR IS ONLY 1/16TH INCH.

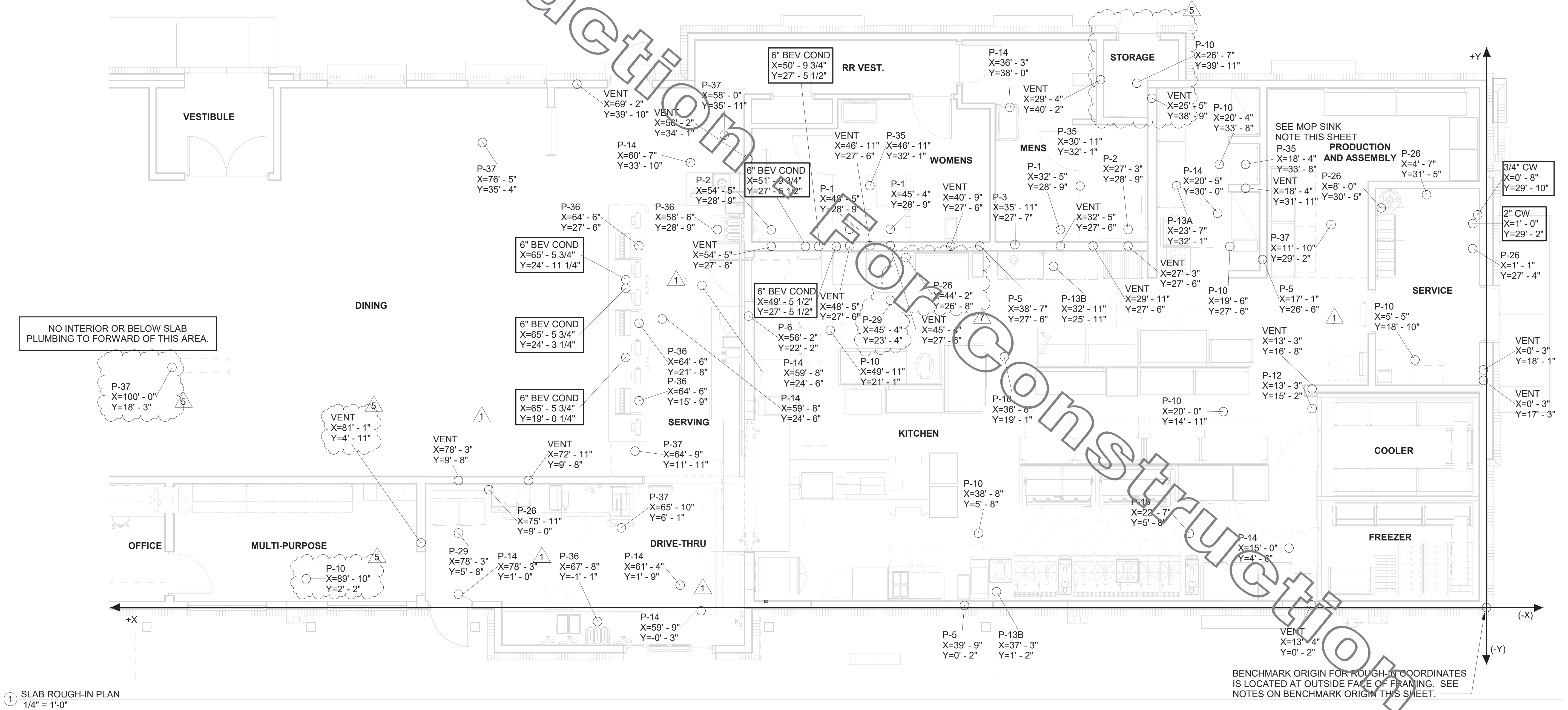
IMPORTANT NOTE TO INSTALLER
 EXERCISE CAUTION WHEN LOCATING ROUGH-INS AT:
 -DRIVE THRU AREA
 -CUSTOMER WAIT AREA
 DO NOT PULL TAPE FROM THE SLAB EDGE AT THESE AREAS WITHOUT COMPENSATING FOR DIFFERENCE IN OFFSETS. NOTE OFFSET AT BACK CORNER OF BUILDING.

MOP SINK NOTE
 IMPORTANT: INSTALL FLOOR DRAIN WITH TOP OF DRAIN 0'-7" BFF. COORDINATE WITH GENERAL CONTRACTOR. SEE ARCHITECTURAL AND STRUCTURAL DRAWINGS.

COORDINATE LEGEND		
TYPE	EXAMPLE	PIPE COORDINATES
#1	CW X=43'8" Y=14'7"	APPLIES TO WATER PIPING ROUGH-IN PENETRATION ONLY. SEE P-101 FOR CONTINUATION.
#2	VENT X=43'8" Y=14'7"	APPLIES TO DWV PENETRATION ONLY.
#3	6" BEV COND X=43'8" Y=27'3"	APPLIES TO 6" BEVERAGE CONDUIT PENETRATION ONLY.

NOTES ABOUT (0,0) BENCHMARK ORIGIN

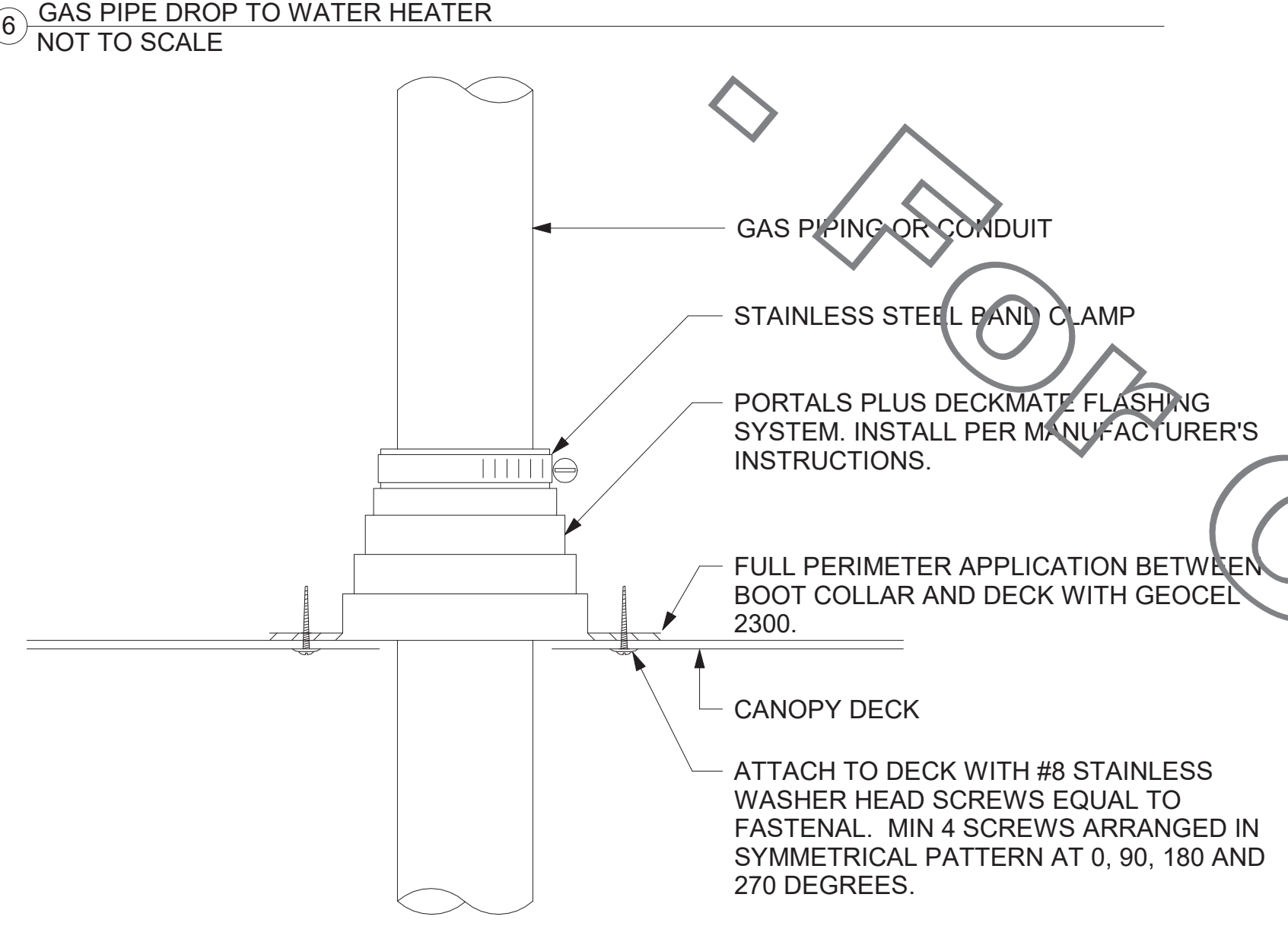
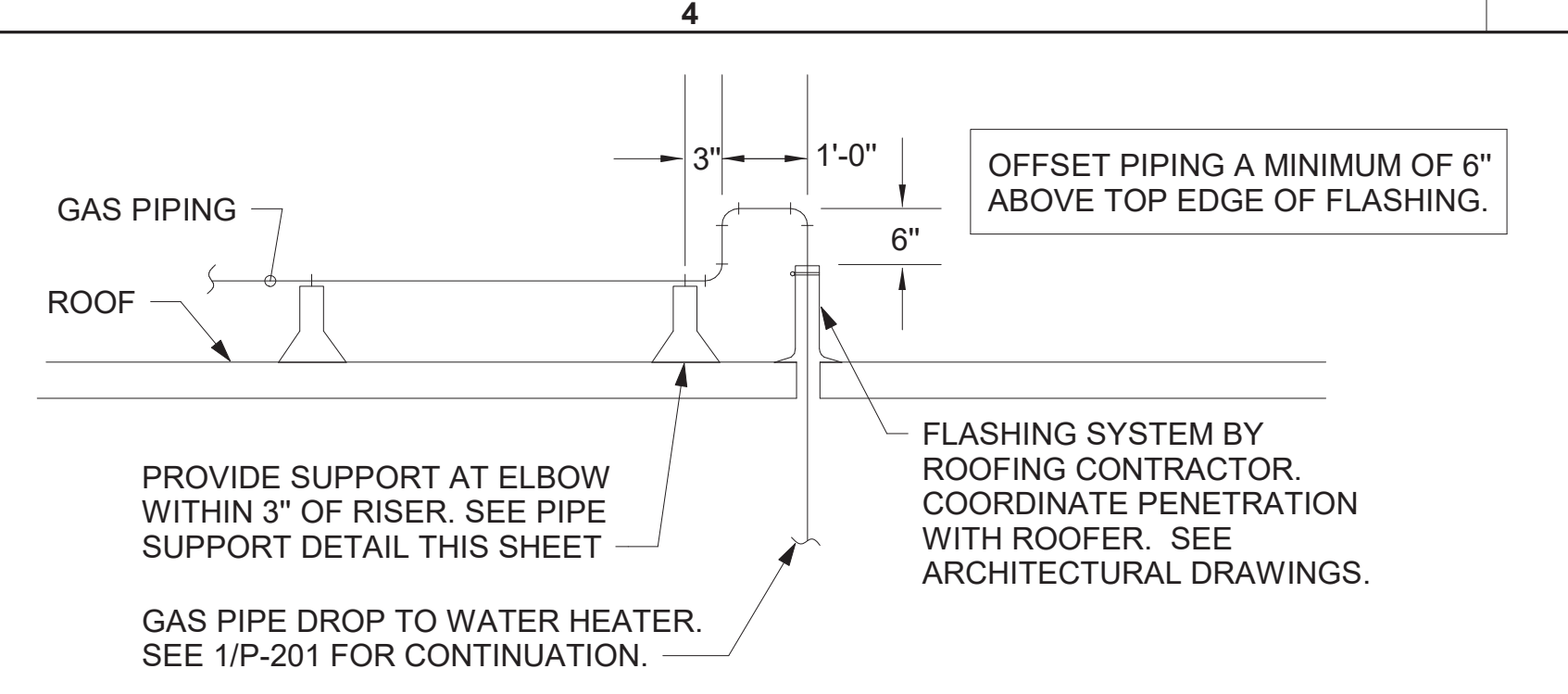
- THE (X=0, Y=0) BENCHMARK ORIGIN IS LOCATED AT THE OUTSIDE FACE OF FRAMING FOR THE EXTERIOR WALL AT THE CORNER WHERE SHOWN ON THE ADJACENT PLAN.
- IT IS EXTREMELY IMPORTANT FOR THE PLUMBING INSTALLER TO BECOME COMPLETELY FAMILIAR WITH THE FACE-OF-FRAMING POSITION AND ITS RELATION TO THE FLOOR SLAB CONSTRUCTION PRIOR TO BEGINNING THE UNDERSLAB PLUMBING ROUGH-IN.
- PLUMBING CONTRACTOR SHALL REVIEW STRUCTURAL DETAIL "TYPICAL SECTION @ EXTERIOR WALL" FOR PRECISE LOCATION OF FACE-OF-FRAMING WITH RESPECT TO THE SLAB INSTALLATION PRIOR TO LOCATING SLAB ROUGH-INS.



1 SLAB ROUGH-IN PLAN
 1/4" = 1'-0"

BIM 360//AL_00822_Hooper Commons_Hooper_FSR_P12.LS_LRG00822_Hooper Commons_PLB.rvt
 9/27/2021 9:32:02 AM
 40-LSR-00822-P-221-SLAB ROUGH-IN PLAN

COPYRIGHT © 2019 INTERPLAN, LLC. RESERVES COPYRIGHT & OTHER RIGHTS RESTRICTING THESE DOCUMENTS TO THE ORIGINAL SITE OR PURPOSE FOR WHICH THEY WERE PREPARED. REPRODUCTIONS, CHANGES OR ASSIGNMENTS ARE PROHIBITED.

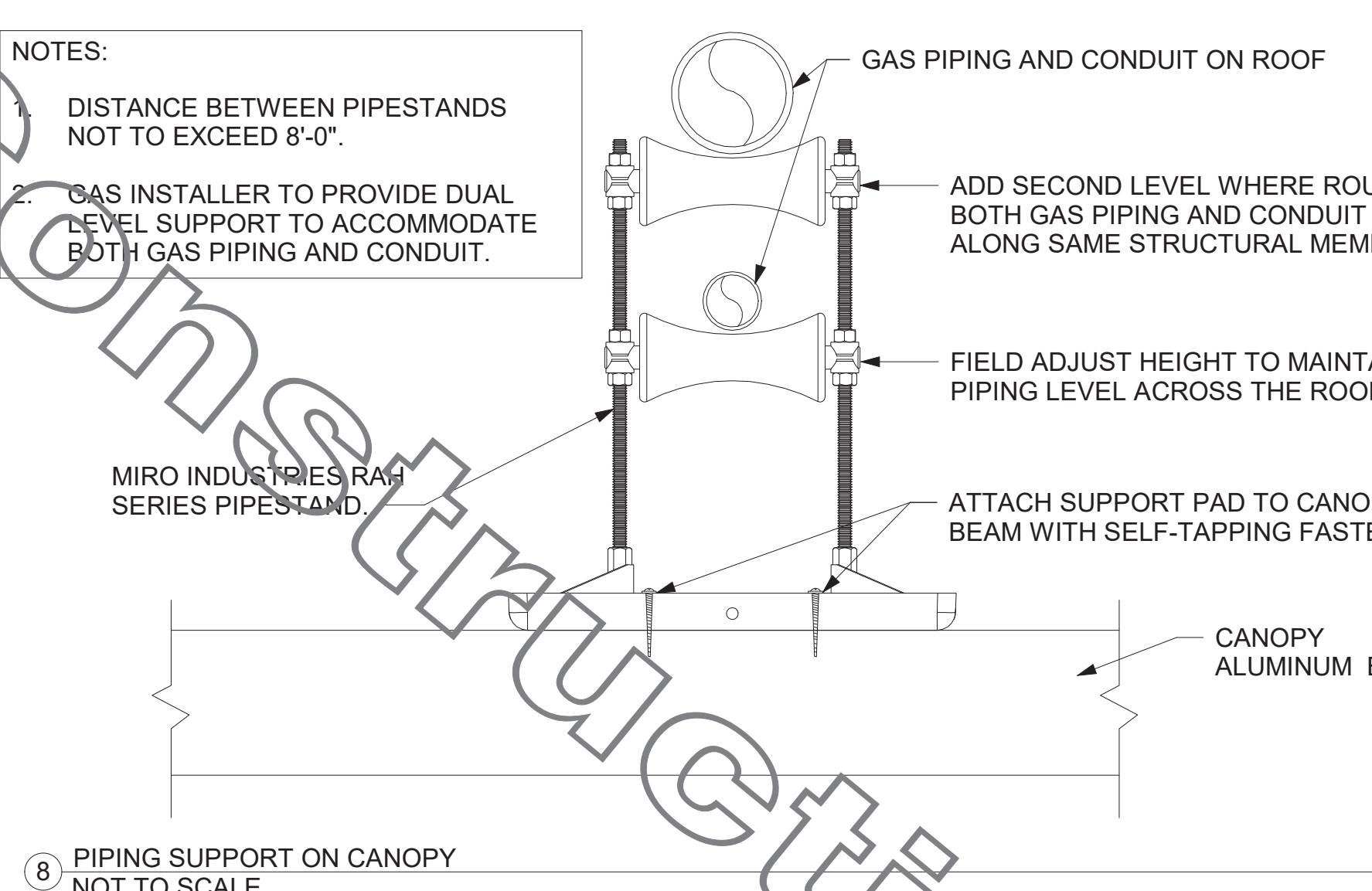
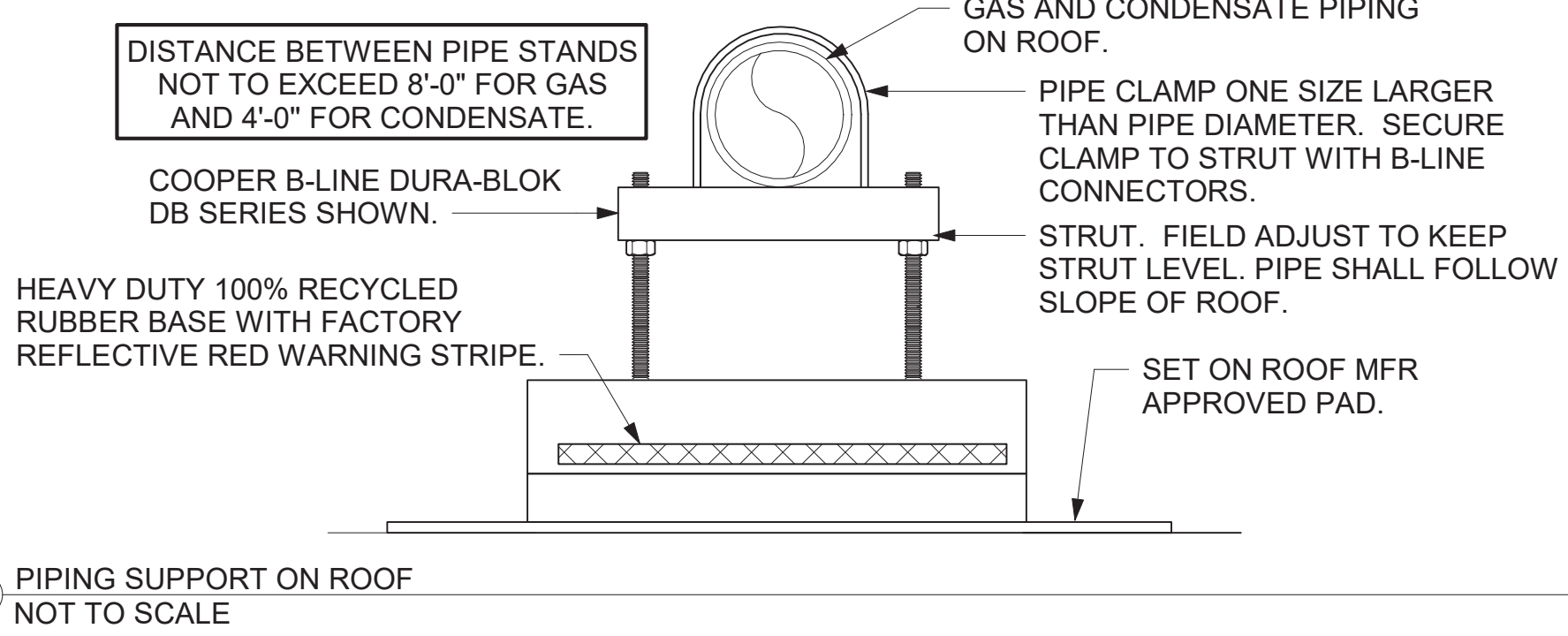


LEGEND

GIH#1	GAS INFRARED HEATER #1 (TYP.)	B/G	BELOW GRADE
---	NEW GAS PIPING ABOVE GRADE	EC	ELECTRICAL CONTRACTOR
---	NEW GAS PIPING BELOW GRADE	MC	MECHANICAL CONTRACTOR

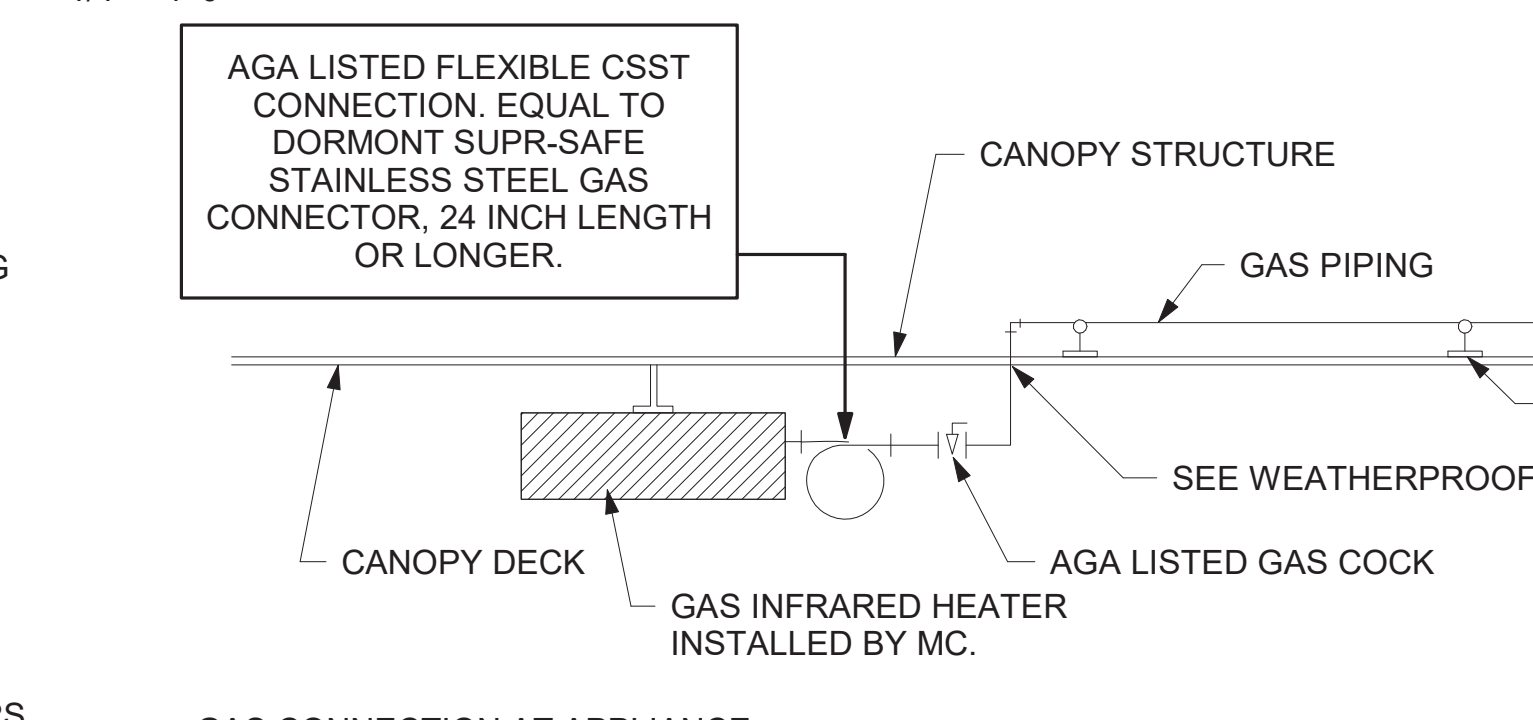
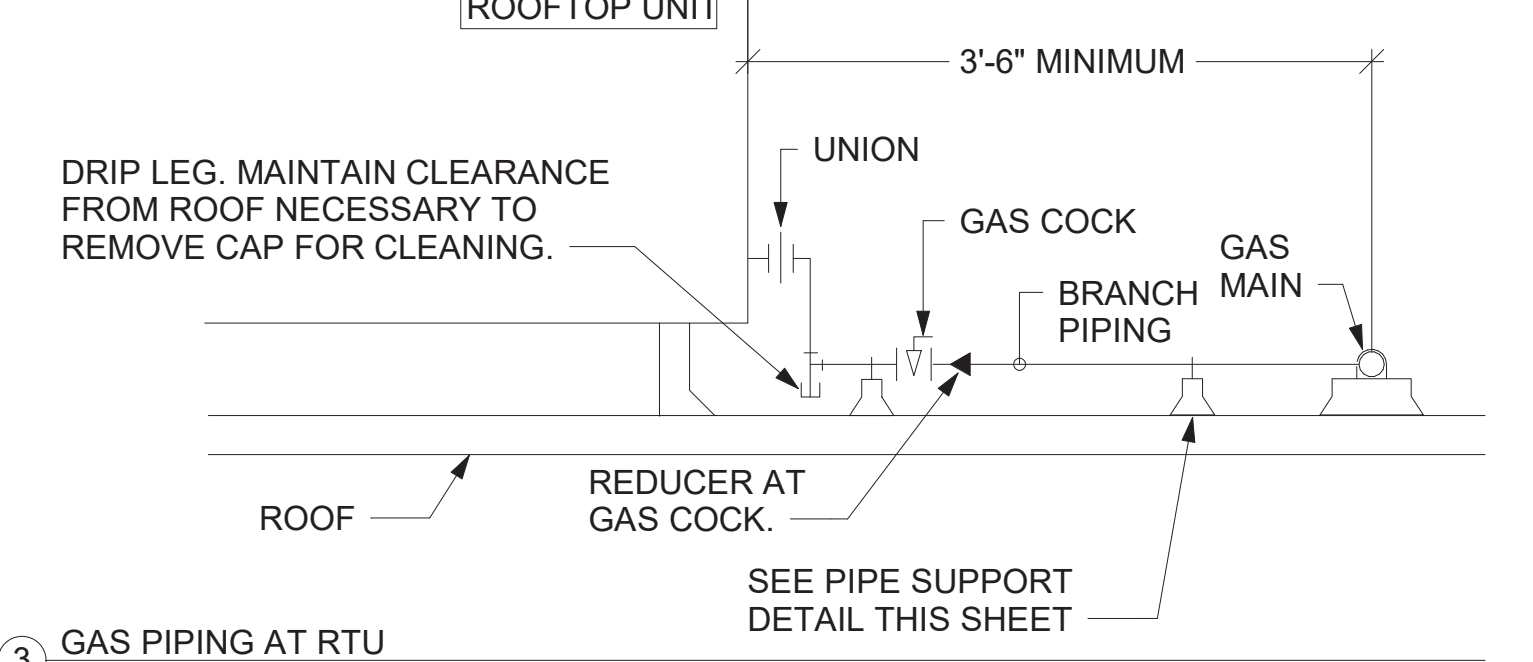
NOTES:

- NON ADJUSTABLE MODEL DB610 PIPE STAND TO BE USED FOR NON-ELEVATED PIPING INSTALLED FLAT ON ROOF DECK.
- PROVIDE MODEL DBE 10-8 OR DBE 10-12 OR DBE 10-16 AS NEEDED FOR ELEVATING CONDENSATE PIPING TO MAINTAIN PROPER SLOPE AND FOR GAS PIPING CROSSING OVER CONDENSATE PIPING.
- ENSURE GAS AND CONDENSATE PIPING DO NOT OBSTRUCT ROOFTOP EQUIPMENT ACCESS OPENINGS. RE-PIPING OF SYSTEMS DUE TO CONFLICTS WITH EQUIPMENT ACCESS OPENINGS SHALL BE DONE AT PLUMBING CONTRACTOR'S EXPENSE.



NOTES:

- INSTALL GAS PIPING SUCH THAT HVAC EQUIPMENT ACCESS PANELS AND/OR DOORS ARE IN NO WAY OBSTRUCTED BY PIPING, VALVES, OR SUPPORTS.
- TO AVOID CONFLICT WITH AC UNIT ACCESS DORRS, INSTALL GAS PIPING NO CLOSER THAN 3'-6" FROM AC UNIT. (EXCEPT FOR BRANCH LINE CONNECTED TO AC UNIT.)
- ROUTE BRANCH TAKE-OFF DIRECTLY FROM MAIN TO ROOFTOP UNIT AS SHOWN ON PLAN AND DETAILS WITHOUT LATERAL OFFSETS WHICH MAY OBSTRUCT UNIT ACCESS DOORS.

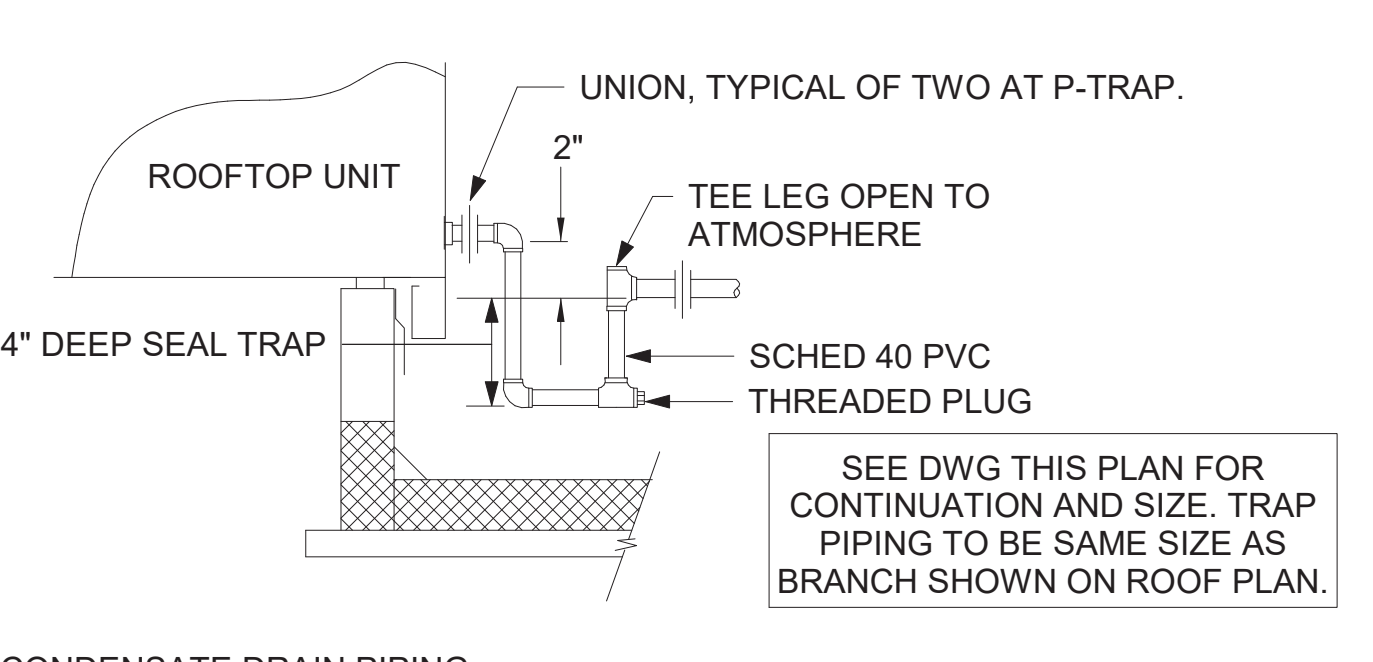


5. GAS CONNECTION SCHEDULE

EQUIPMENT	GAS LOAD
AC#1	480,000 BTUS
AC#2	360,000 BTUS
AC#3	480,000 BTUS
GIH (8 @ 50,000 BTU EA.)	400,000 BTUS
WATER HEATER	120,000 BTUS
TOTAL CONNECTED LOAD	1,820,000 BTUS

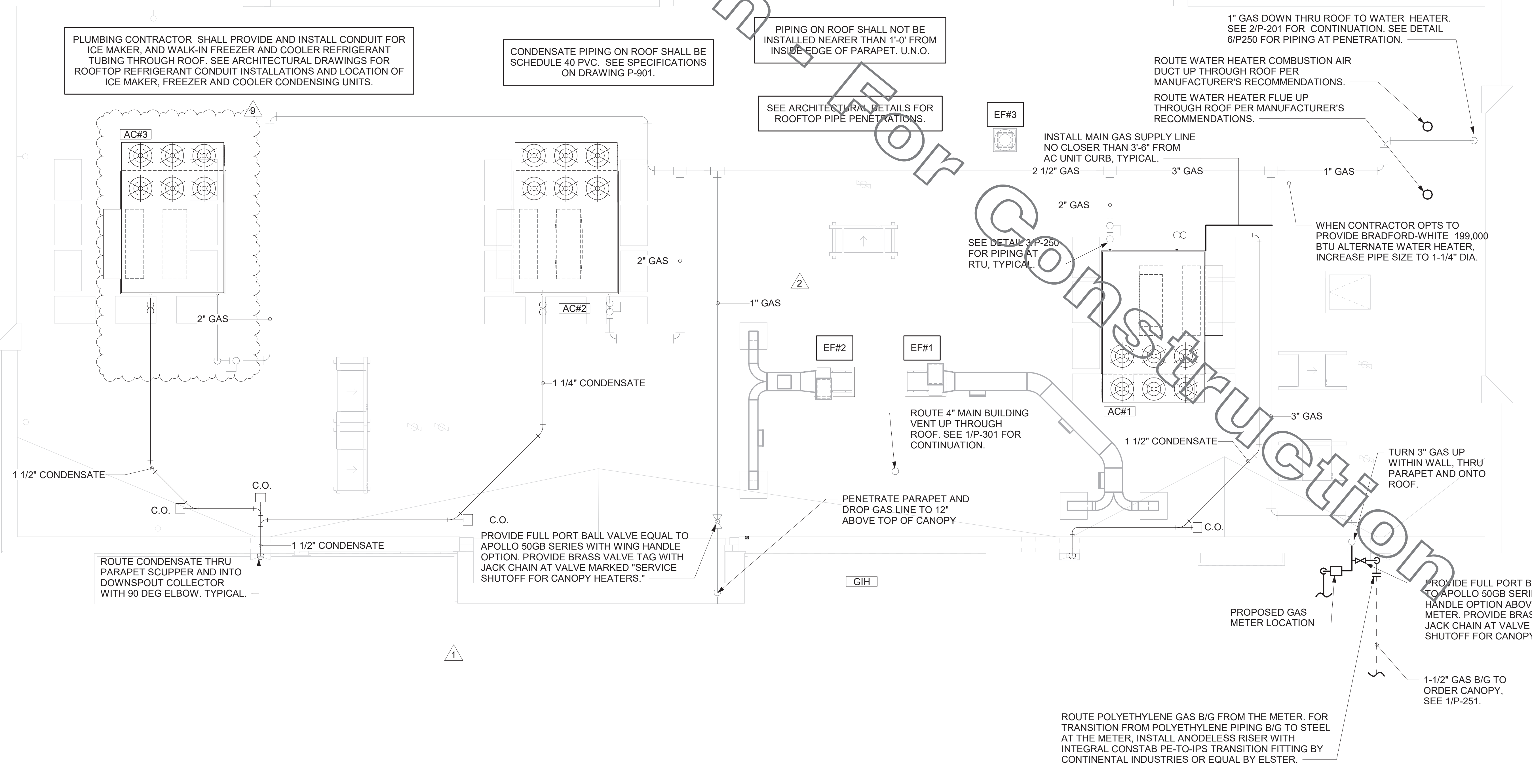
REMARKS:

- EQUIVALENT TO 1,820.0 CFH
- 7" W.C. DELIVERY PRESSURE
- DEVELOPED LENGTH: 175 FT (METER TO AC#3)



CANOPY GENERAL NOTES

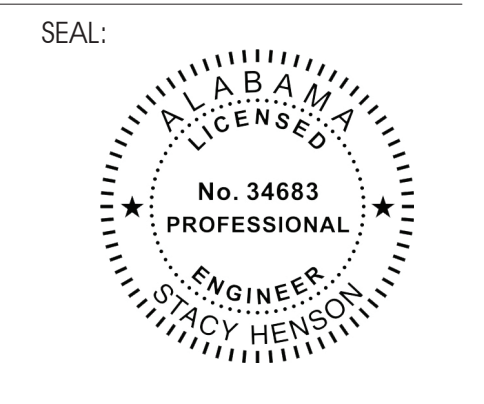
- COORDINATE NEW WORK WITH EXISTING CONDUIT, STRUCTURE, AND PIPING. FIELD VERIFY EXISTING CONDITIONS PRIOR TO START OF WORK.
- COORDINATE LOCATION AND RESPONSIBILITIES FOR UNDERGROUND PIPING AND ASSOCIATED TRENCHING WITH GENERAL CONTRACTOR PRIOR TO START OF WORK.
- EXPOSED GAS PIPING SHALL BE PAINTED BY GENERAL CONTRACTOR.
- ACTUAL NUMBER OF GAS INFRARED HEATERS WILL BE DETERMINED BY SITE-SPECIFIC CANOPY LAYOUT AND EQUIPMENT LOCATIONS, AS INDICATED ON ARCHITECTURAL PLANS.



Chick-fil-A
 5200 Buffington Road
 Atlanta, Georgia
 30349-2998

INTERPLAN
 ARCHITECTURE
 ENGINEERING
 INTERIOR DESIGN
 PROJECT MANAGEMENT

604 COURTLAND STREET SUITE 100
 ORLANDO, FLORIDA 32834
 PH 407.645.5008
 FX 407.629.9124



CHICK-FIL-A
HOOVER COMMONS FSR
 1609 MONTGOMERY HIGHWAY
 HOOVER, AL 35216

FSR#00822
 BUILDING TYPE / SIZE: P13 LSR ALL
 RELEASE: v2_20_02

REVISION SCHEDULE

NO.	DATE	DESCRIPTION
1	01/08/20	CREASE REVIEW
2	02/08/21	OWNER REVISION
9	09.22.21	COORDINATION REVISIONS

FOR CONSTRUCTION

CONSULTANT PROJECT # 2019.0323
 PRINTED FOR FOR CONSTRUCTION
 DATE 08/03/2020
 DRAWN BY JL

Information contained on this drawing and in all digital files produced for above named project may not be reproduced in any manner without express written or verbal consent from authorized project representatives.

SHEET ROOF PLAN AND DETAILS

SHEET NUMBER **P-250**
 CHR/HR - 09/27/2021 5:19:20 PM

BIM 360/JAL_00822_Hoover Commons_Hoover_FSR_P12.LS_LRG00822_Hoover Commons_PLB.rvt
 9/27/2021 9:32:08 AM
 40-LSR-00822-P-250-ROOF PLAN AND DETAILS

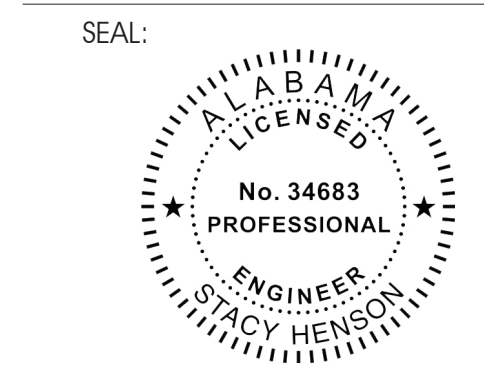
COPYRIGHT © 2019 INTERPLAN LLC. RESERVES COPYRIGHT & OTHER RIGHTS RESTRICTING THESE DOCUMENTS TO THE ORIGINAL SITE OR PURPOSE FOR WHICH THEY WERE PREPARED. REPRODUCTIONS, CHANGES OR ASSIGNMENTS ARE PROHIBITED.



Chick-fil-A
5200 Buffington Road
Atlanta, Georgia
30349-2998

INTERPLAN
ARCHITECTURE
ENGINEERING
INTERIOR DESIGN
PROJECT MANAGEMENT

604 COURTLAND STREET
SUITE 100
ORLANDO, FLORIDA 32834
PH 407.645.5008
FX 407.629.9124



CHICK-FIL-A
HOOVER COMMONS FSR
1609 MONTGOMERY HIGHWAY
HOOVER, AL 35216

FSR#00822
BUILDING TYPE / SIZE: P13 LSR ALL
RELEASE: v2_20_02

REVISION SCHEDULE		
NO.	DATE	DESCRIPTION
2	02/08/21	OWNER REVISION
7	04/14/21	OWNER REVISION

FOR CONSTRUCTION

CONSULTANT PROJECT # 2019.0323
PRINTED FOR FOR CONSTRUCTION
DATE 08/03/2020
DRAWN BY JI

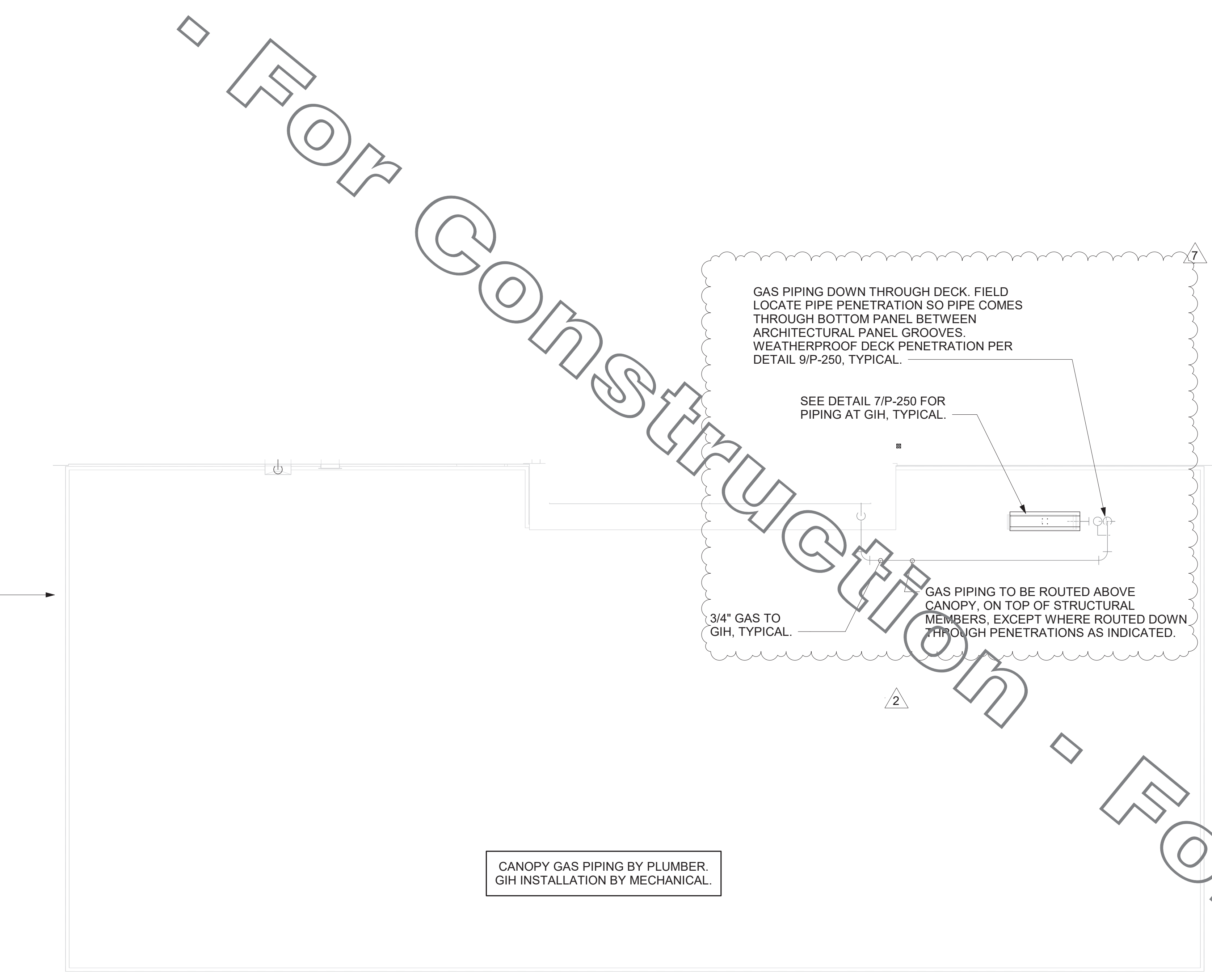
Information contained on this drawing and in all digital files produced for above named project may not be reproduced in any manner without express written or verbal consent from authorized project representatives.

SHEET CANOPY PLAN AND DETAIL
SHEET NUMBER **P-251**
CHR/HR - 09/27/2021 5:19:21 PM

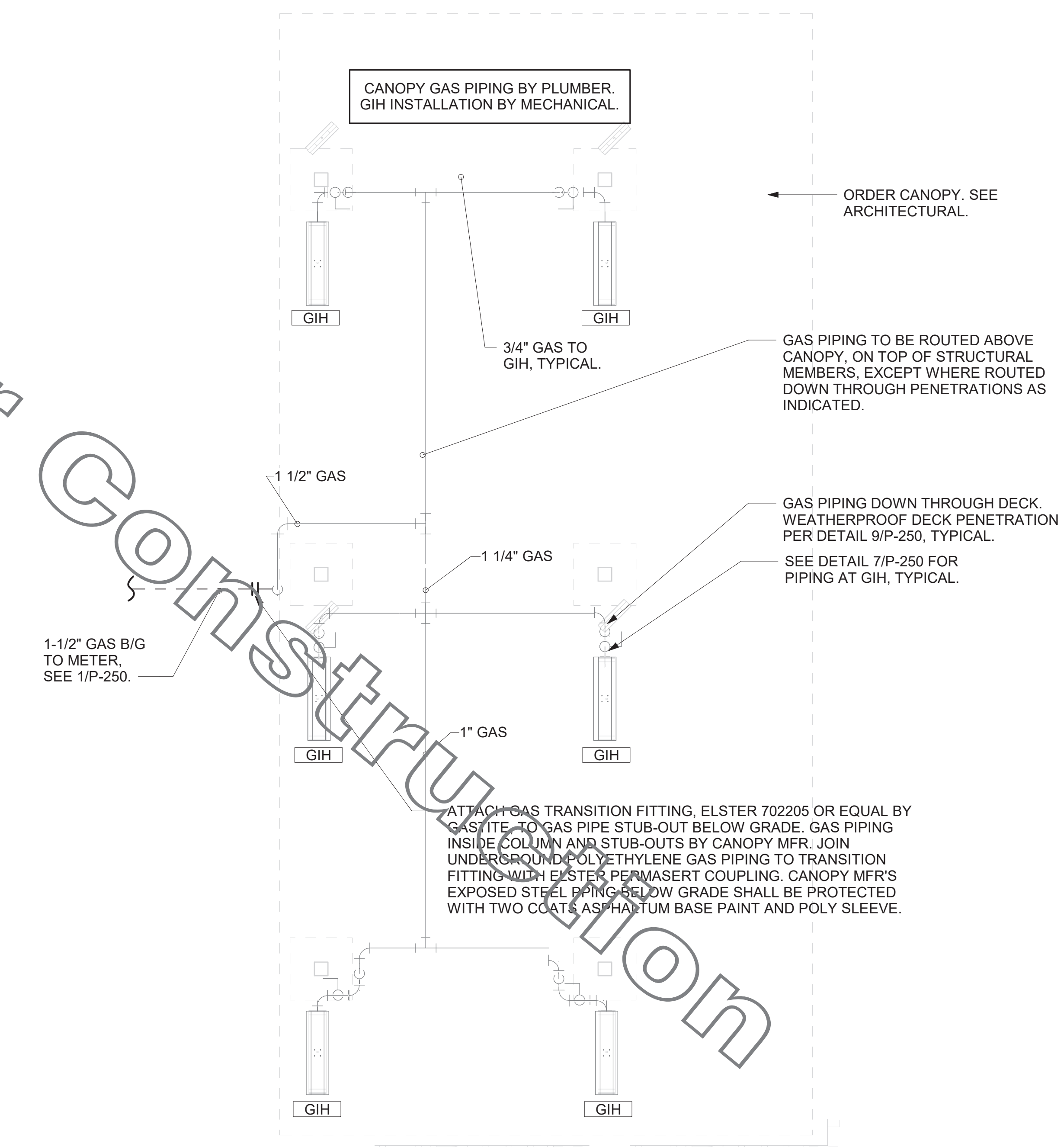
LEGEND			
[GIH#1]	GAS INFRARED HEATER #1 (TYP.)	B/G	BELOW GRADE
—	NEW GAS PIPING ABOVE GRADE	EC	ELECTRICAL CONTRACTOR
- - -	NEW GAS PIPING BELOW GRADE	MC	MECHANICAL CONTRACTOR

CANOPY GENERAL NOTES

- COORDINATE NEW WORK WITH EXISTING CONDUIT, STRUCTURE, AND PIPING. FIELD VERIFY EXISTING CONDITIONS PRIOR TO START OF WORK.
- COORDINATE LOCATION AND RESPONSIBILITIES FOR UNDERGROUND PIPING AND ASSOCIATED TRENCHING WITH GENERAL CONTRACTOR PRIOR TO START OF WORK.
- EXPOSED GAS PIPING SHALL BE PAINTED BY GENERAL CONTRACTOR.
- ACTUAL NUMBER OF GAS INFRARED HEATERS WILL BE DETERMINED BY SITE-SPECIFIC CANOPY LAYOUT AND EQUIPMENT LOCATIONS, AS INDICATED ON ARCHITECTURAL PLANS.



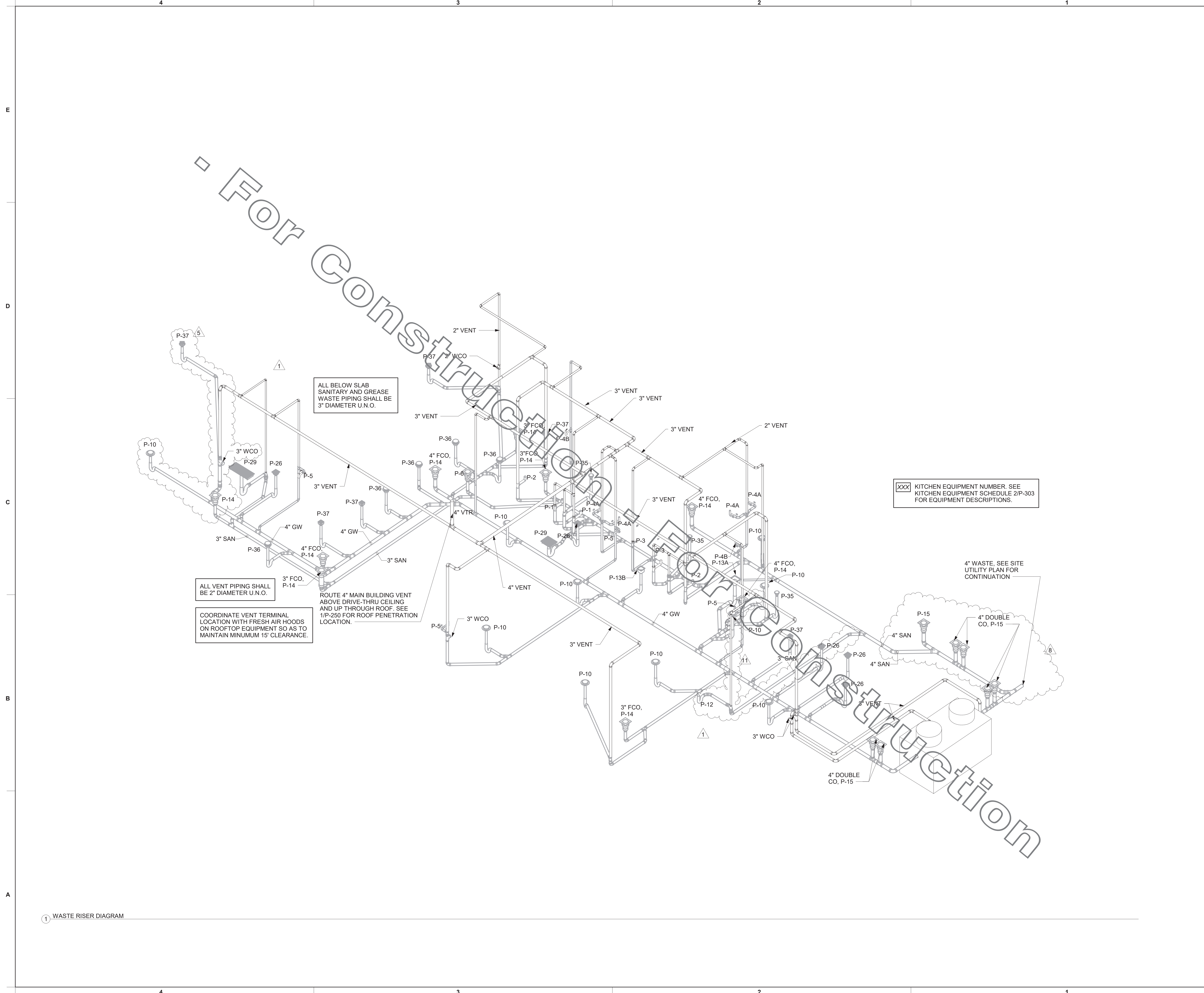
4 OMD PIPING PLAN
1/4" = 1'-0"



1 ORDER CANOPY PIPING PLAN
1/4" = 1'-0"

For Construction - For Construction

BIM 360/JAL_00822_Hoover Commons_Hoover_FSR_P12.LS_LRG00822_Hoover Commons_PLB.rvt
10/18/2021 3:55:41 PM
40-LSR-00822-P-301-DWV RISER DIAGRAM

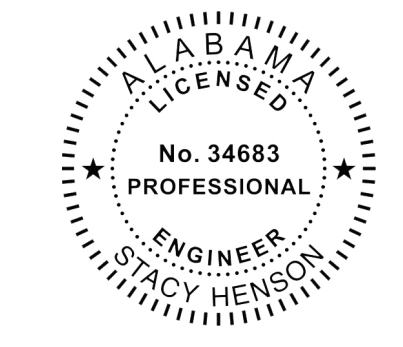


Chick-fil-A
5200 Buffington Road
Atlanta, Georgia
30349-2998

INTERPLAN
ARCHITECTURE
ENGINEERING
INTERIOR DESIGN
PROJECT MANAGEMENT

604 COURTLAND STREET
SUITE 100
ORLANDO, FLORIDA 32834
PH 407.645.5008
FX 407.629.9124

SEAL:



CHICK-FIL-A
HOOPER COMMONS FSR
1609 MONTGOMERY HIGHWAY
HOOPER, AL 35216

FSR#00822
BUILDING TYPE / SIZE: P13 LSR ALL
RELEASE: v2_20.02

REVISION SCHEDULE

NO.	DATE	DESCRIPTION
1	01/08/20	GREASE REVIEW
5	02/24/21	OWNER REVISION
8	07/06/21	SITE REVISIONS
11	10.08.21	COORDINATION REVISIONS

CONSULTANT PROJECT # 2019.0323
PRINTED FOR FOR CONSTRUCTION
DATE 08/03/2020
DRAWN BY JI

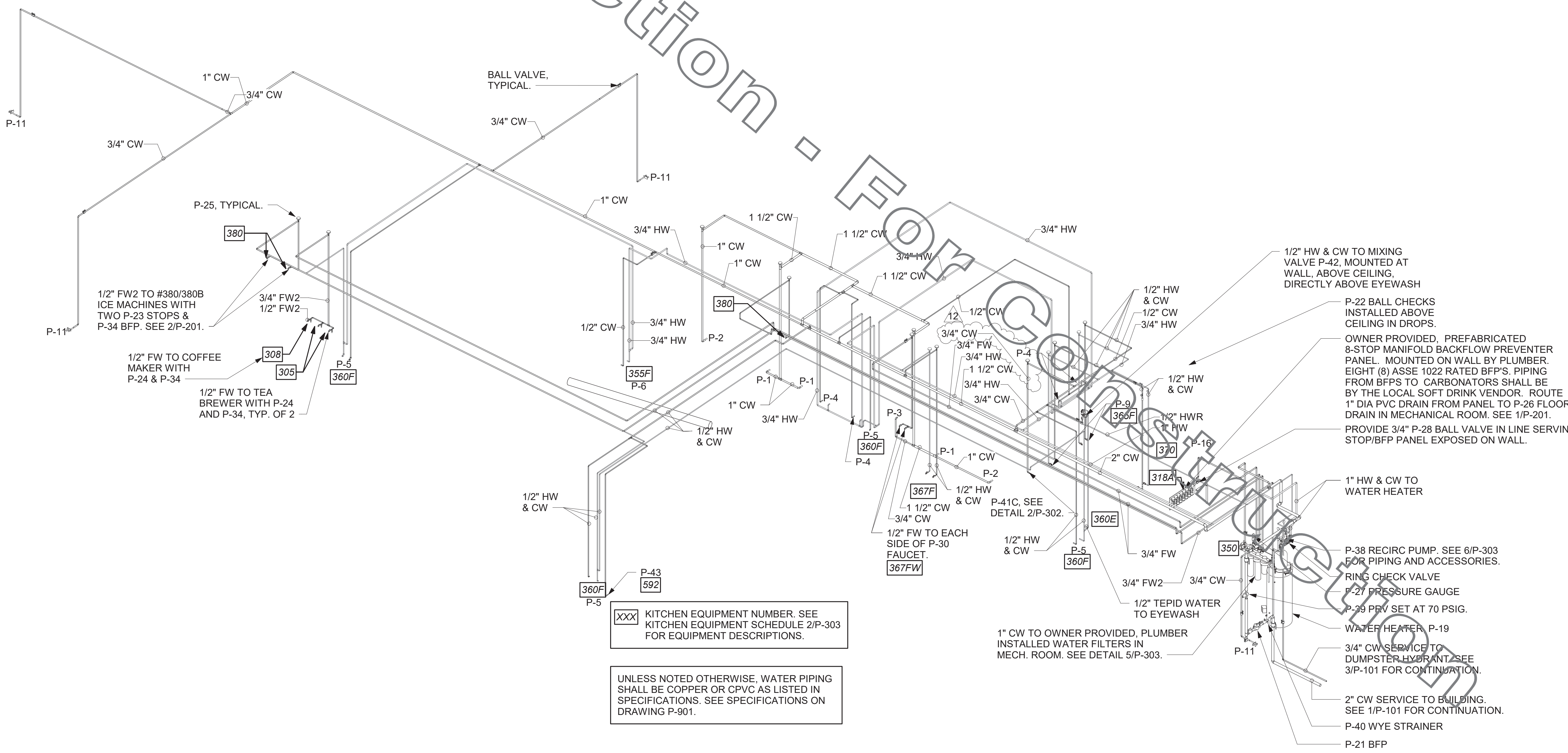
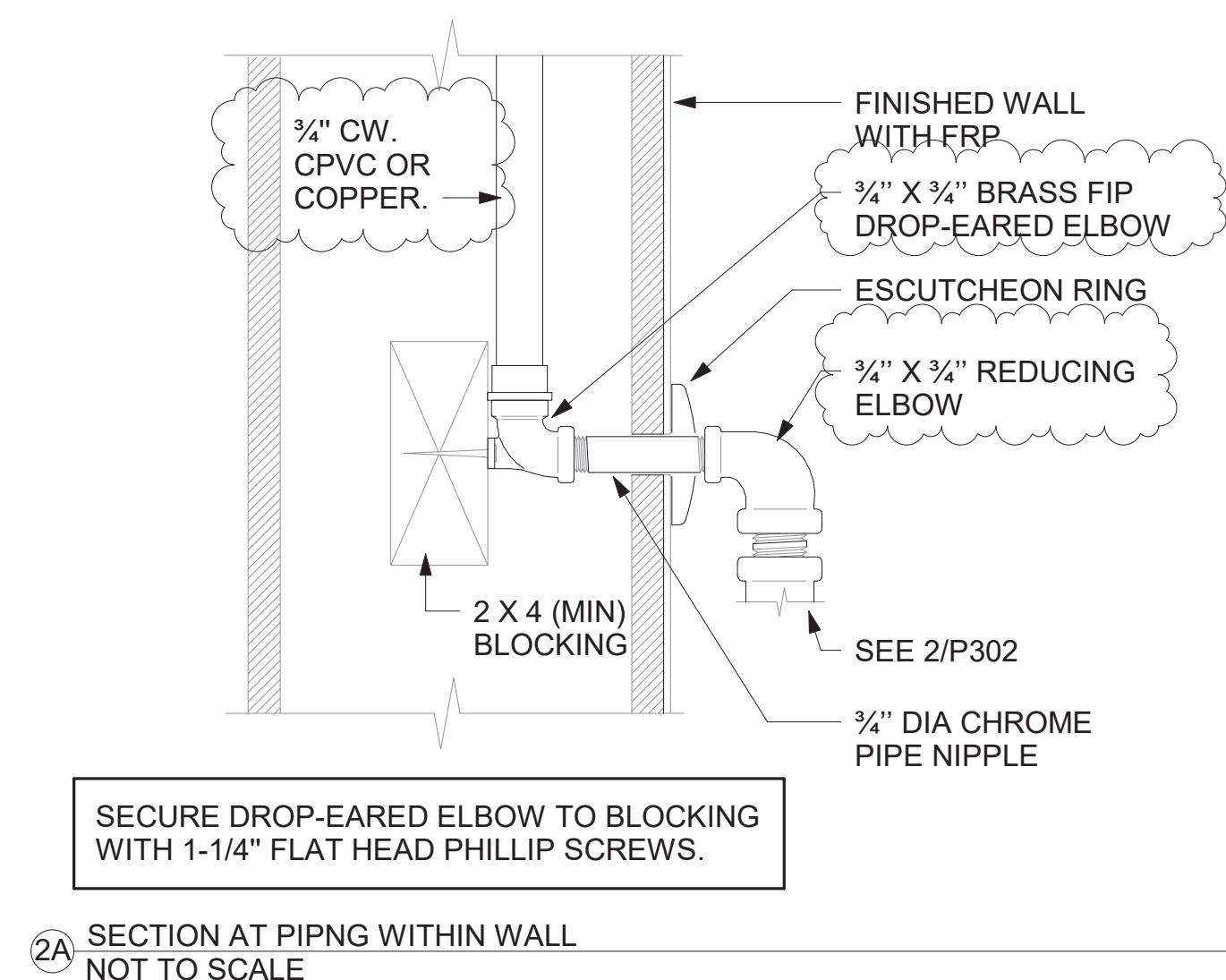
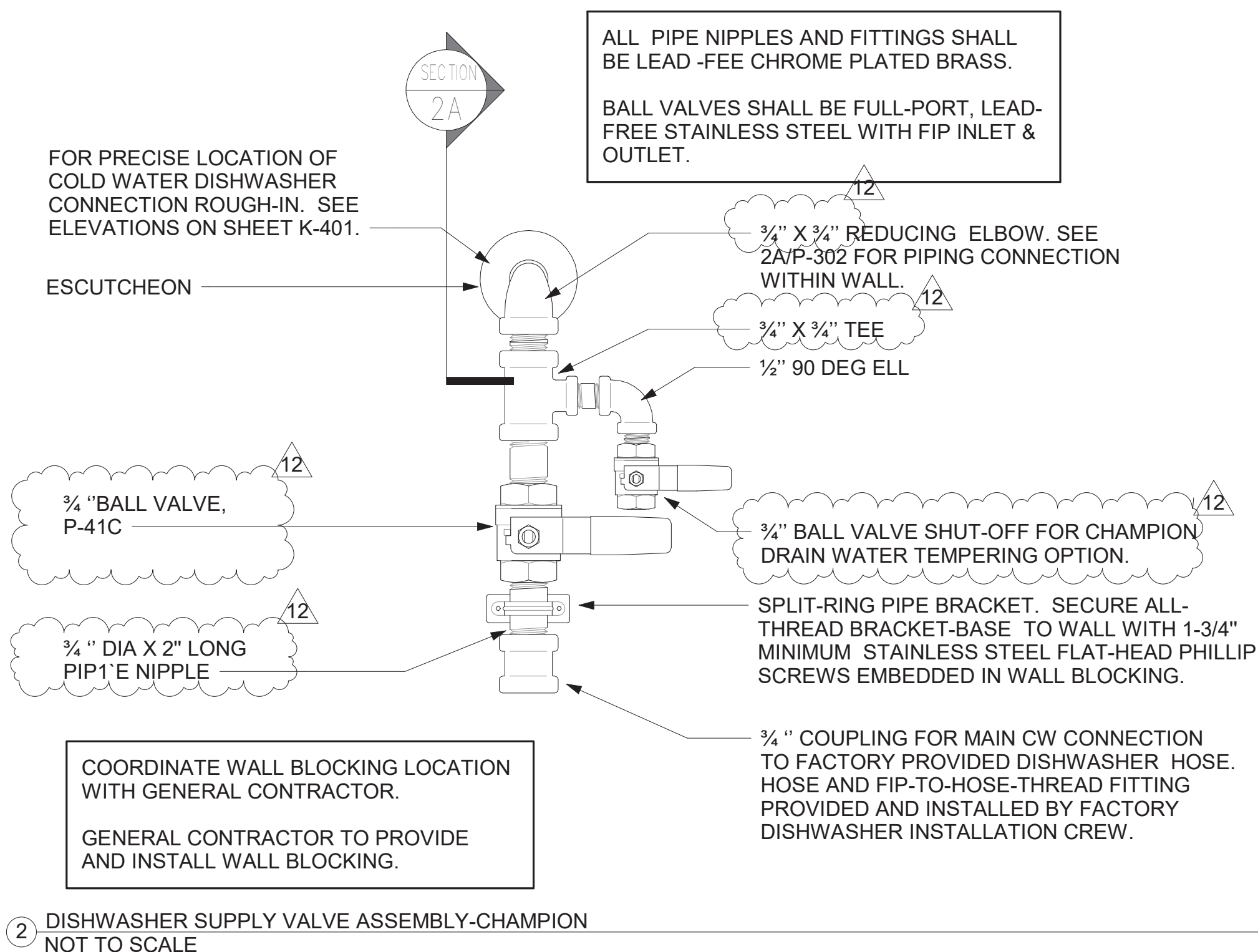
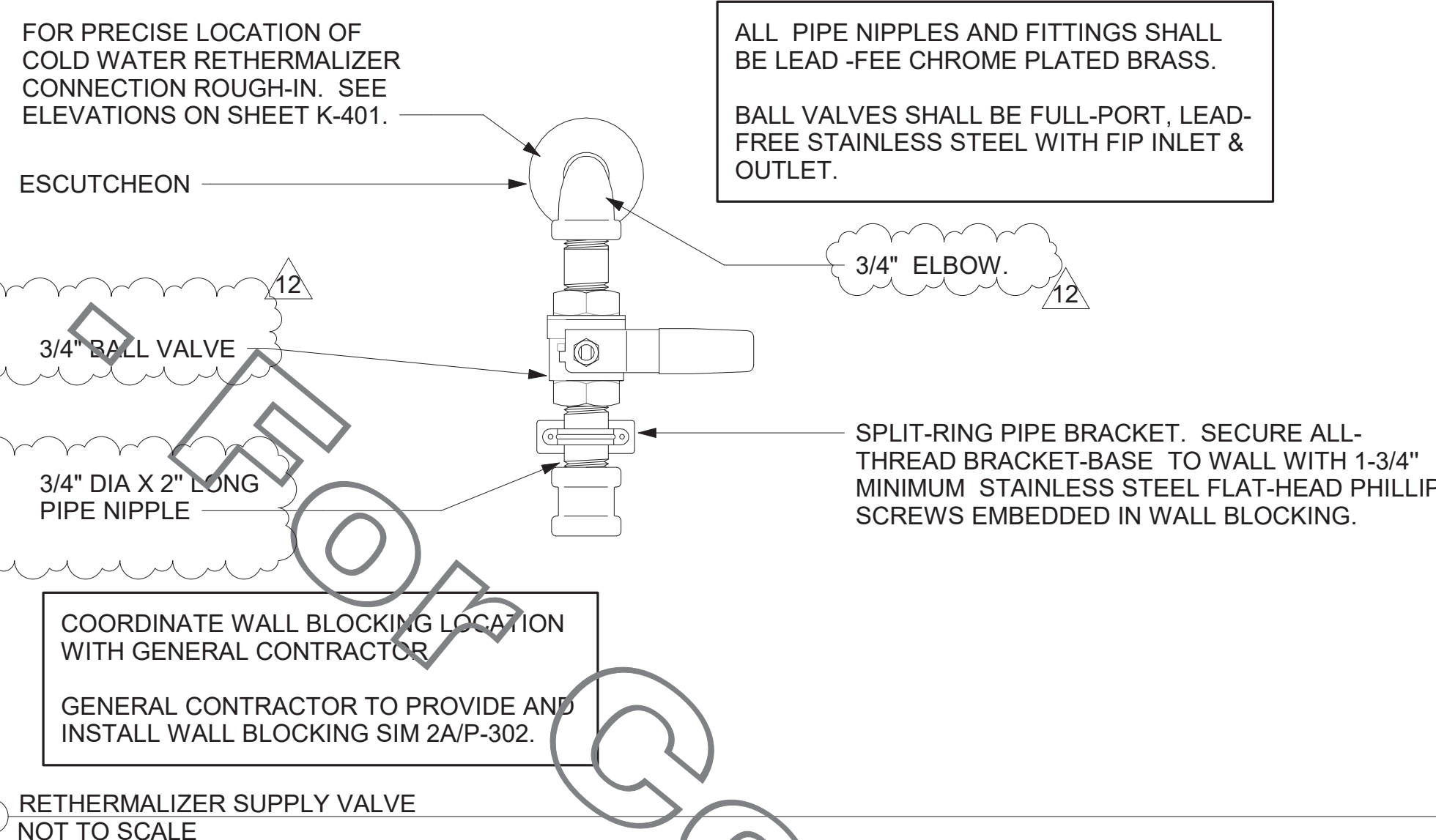
Information contained on this drawing and in all digital files produced for above named project may not be reproduced in any manner without express written or verbal consent from authorized project representatives.

SHEET DWV RISER DIAGRAM

SHEET NUMBER **P-301**
CHRHR - 10/18/2021 4:06:01 PM

COPYRIGHT © 2019 INTERPLAN, LLC. RESERVES COPYRIGHT & OTHER RIGHTS RESTRICTING THESE DOCUMENTS TO THE ORIGINAL SITE OR PURPOSE FOR WHICH THEY WERE PREPARED. REPRODUCTIONS, CHANGES OR ASSIGNMENTS ARE PROHIBITED.

E D C B A



1 WATER RISER DIAGRAM

Construction - For Q

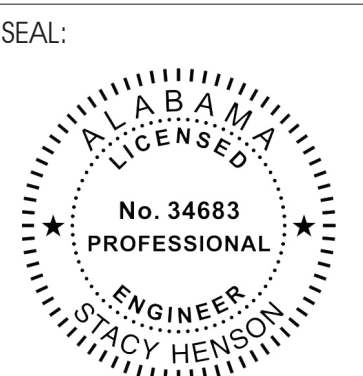


Chick-fil-A

Chick-fil-A
5200 Buffington Road
Atlanta, Georgia
30349-2998

INTERPLAN
ARCHITECTURE
ENGINEERING
INTERIOR DESIGN
PROJECT MANAGEMENT

604 COURTLAND STREET SUITE 100
ORLANDO, FLORIDA 32834
PH 407.645.5008
FX 407.629.9124



CHICK-FIL-A
HOOVER COMMONS FSR

1609 MONTGOMERY HIGHWAY
HOOVER, AL 35216

FSR#00822
BUILDING TYPE / SIZE: P13 LSR ALL
RELEASE: v2_20_02

NO.	DATE	DESCRIPTION
1	01/08/20	GREASE REVIEW
12	10.22.21	OWNER COMMENTS

FOR CONSTRUCTION

CONSULTANT PROJECT #	2019.0323
PRINTED FOR	FOR CONSTRUCTION
DATE	08/03/2020
DRAWN BY	JL

Information contained on this drawing and all digital files produced for above named project may not be reproduced in any manner without express written or verbal consent from authorized project representatives.

SHEET WATER RISER DIAGRAM

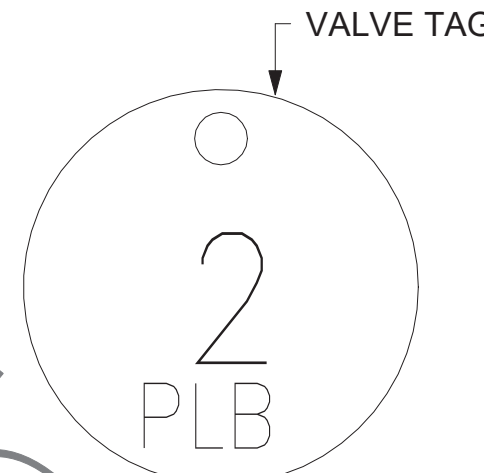
SHEET NUMBER

P-302
CHRHER - 11/04/2021 12:37:49 PM

COPYRIGHT © 2019 INTERPLAN, LLC. RESERVES COPYRIGHT & OTHER RIGHTS RESTRICTING THESE DOCUMENTS TO THE ORIGINAL SITE OR PURPOSE FOR WHICH THEY WERE PREPARED. REPRODUCTIONS, CHANGES OR ASSIGNMENTS ARE PROHIBITED.

VALVE TAG LEGEND	
VALVE	VALVE POSITION
① MAIN WATER SHUT-OFF	NORMALLY OPEN
② MAIN DRAIN	NORMALLY CLOSED
③ ACCESSORY SHUT-OFF	NORMALLY OPEN
④ WATER FILTER INLET	NORMALLY OPEN
⑤ RECIRC PUMP ISOLATION VALVE	NORMALLY OPEN
⑥ WATER HEATER INLET	NORMALLY OPEN
⑦ RESTROOM & KITCHEN COLD WATER	NORMALLY OPEN
⑧ POST HYDRANT COLD WATER	NORMALLY OPEN
⑨ GAS TO WATER HEATER	NORMALLY OPEN
⑩ WATER HEATER OUTLET	NORMALLY OPEN

LAMINATE VALVE TAG LEGEND AND MOUNT PERMANENTLY WHERE SHOWN ON WATER HEATER DETAIL IN AN ALUMINUM FRAME EQUAL TO SETON #68624.



② VALVE TAG SYMBOL AS SHOWN ON DETAIL 6/P-303. PROVIDE 1/2" ROUND BRASS VALVE TAG WITH 1/2" HIGH BLACK FILLED LETTERING. EACH TAG SHALL INDICATE VALVE NUMBER AND WILL ALSO HAVE "PLBG" STAMPED ON THE TAG IN 1/4" HIGH BLACK FILLED LETTERING EQUAL TO SETON #M4506. HANG WITH BRASS JACK CHAIN ON VALVE HANDLE.

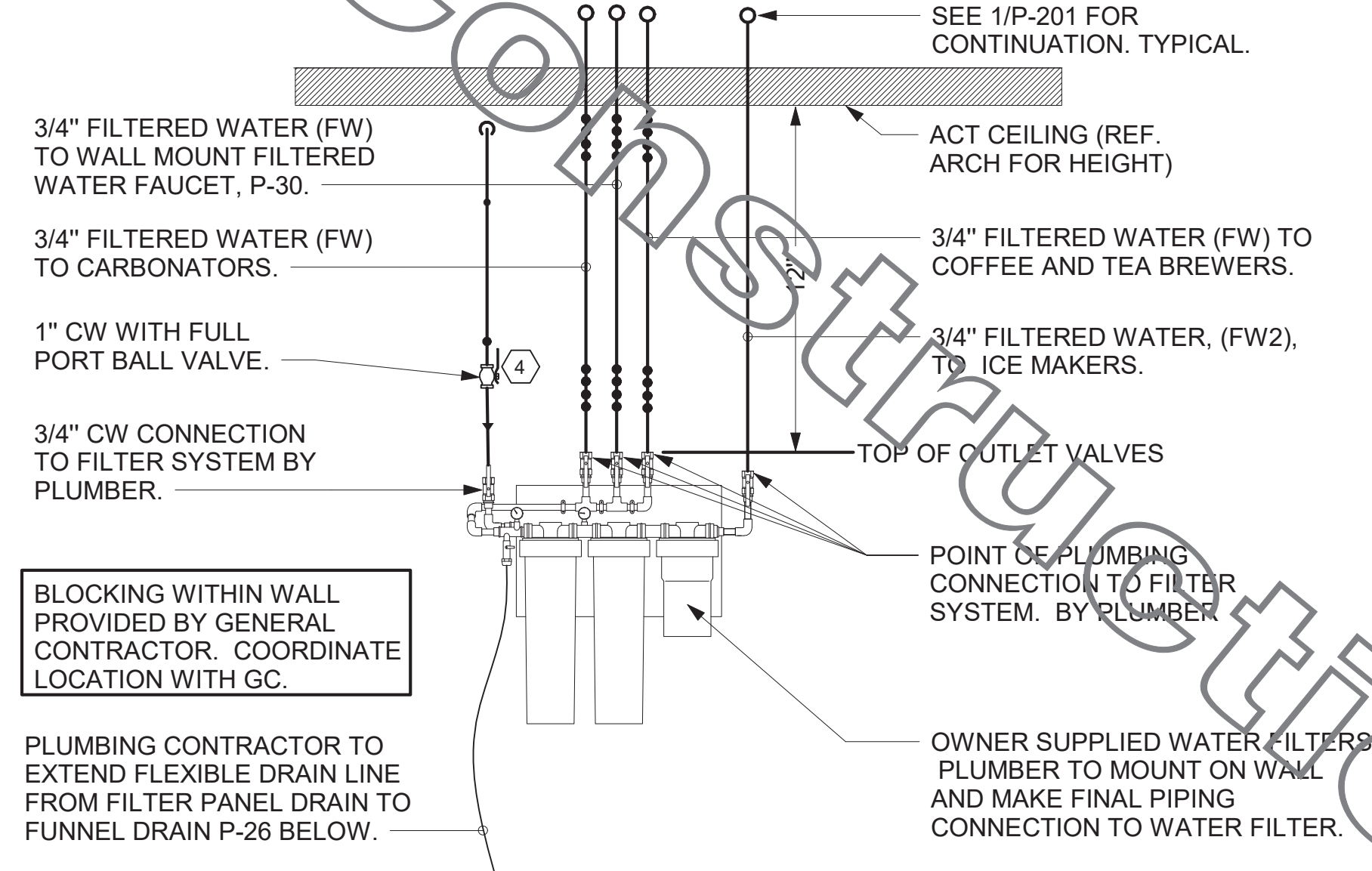
③ VALVE TAGS AND LEGEND NOT TO SCALE

2. KITCHEN EQUIPMENT SCHEDULE							
TAG	DESCRIPTION	FW	FW2	CW	HW	WASTE	ROUGH-IN
305	TEA BREWER	1/2"	X	X	X	X	P-24, SEE K-611 & 6/P-211
308	COFFEE MAKER	1/2"	X	X	X	X	P-24, SEE K-611 & 6/P-211
318A	CARBONATOR BFP PANEL	3/4"	X	X	X	X	P-28, SEE K-611
350	WATER FILTER PANEL	(3) 3/4"	3/4"	3/4"	X	X	SEE DET 5/P-303
360E	EMERGENCY EYEWASH STATION	X	X	1/2"	1/2"	X	1/2" TEPID WATER FROM P-42, SEE K-611 & 1/P-201
363	DISHWASHER	X	X	3/4"	X	INDIRECT TO P-13A	P-41, SEE K-611 & 1/P-201
365	POT SINK	X	X	(2) 1/2"	(2) 1/2"	INDIRECT	TWO #365F FAUCETS, P-9 SEE K-611
367	VEGETABLE PREP SINK	X	X	1/2"	X	INDIRECT	#367F FAUCET, P-8 SEE K-611
367FW	FILTERED WATER FAUCET	(2) 1/2"	X	X	X	X	P-30 48" AFF.
370	MOP SINK	X	X	1/2"	1/2"	3" P-35	P-7 SEE K-611
380	ICE MAKER	X	(3) 1/2"	X	X	INDIRECT	P-23 SEE K-611 & 3/P-201
381	ICE BIN (1 HEAD)	X	X	X	X	INDIRECT	SEE DET 3/P-201
384	ICE BIN (2 HEAD)	X	X	X	X	INDIRECT	SEE DET 3/P-201
592	RETHEMALIZER	X	X	1/2"	X	INDIRECT	SEE DET 3/P-302

1. FIXTURE CONNECTION SCHEDULE

MARK	FIXTURE	FW	FW2	CW	HW	WASTE
P-1	WATER CLOSET - FLOOR MOUNT (1.28 GPF)	X	X	1"	X	3"
P-2	WATER CLOSET - ADA FLOOR MOUNT (1.28 GPF)	X	X	1"	X	3"
P-3	URINAL - ADA WALL HUNG (0.125 GPF)	X	X	3/4"	X	2"
P-4	LAVATORY - ADA COUNTERTOP (0.50 GPM)	X	X	1/2"	1/2"	1-1/4"
P-4A	LAVATORY - ADA COUNTERTOP (0.50 GPM)	X	X	1/2"	1/2"	1-1/4"
P-4B	LAVATORY - ADA WALL-MOUNTED (0.50 GPM)	X	X	1/2"	1/2"	1-1/4"
P-5	KITCHEN HAND SINK - WALL HUNG (1.0 GPM)	X	X	1/2"	1/2"	1-1/2"
P-6	SINGLE COMP SINK - COUNTERTOP (1.0 GPM)	X	X	1/2"	1/2"	1-1/2"
P-7	MOP SINK	X	X	1/2"	1/2"	3"
P-8	VEGETABLE PREP SINK (0.65 GPM SPRAYER)	X	X	1/2"	1/2"	(2) 1-1/2"
P-9	POT SINK (0.65 GPM SPRAYER)	X	X	(2) 1/2"	(2) 1/2"	(4) 1-1/2"
P-10	FLOOR DRAIN (SQUARE TOP)	X	X	X	X	3"
P-11	WALL HYDRANT (NON FREEZE)	X	X	3/4"	X	X
P-12	FUNNEL DRAIN (3")	X	X	X	X	3"
P-13A	FLOOR SINK (4") 12" TOP	X	X	X	X	4"
P-13B	FLOOR SINK (3") 8" TOP	X	X	X	X	3"
P-14	CLEANOUT INSIDE BUILDING	X	X	X	X	SEE PLAN
P-15	CLEANOUT OUTSIDE BUILDING	X	X	X	X	SEE PLAN
P-16	3-WAY VALVE/VACUUM BREAKER	X	X	3/4"	3/4"	X
P-17	VACUUM RELIEF VALVE	X	X	3/4"	X	X
P-18	EXPANSION TANK	X	X	3/4"	X	X
P-19	WATER HEATER	X	X	1"	1"	X
P-20	THERMOMETER	X	X	X	1/2"	X
P-21	BACKFLOW PREVENTER	X	X	1-1/2"	X	X
P-22	MOP SINK CHECK VALVES	X	X	1/2"	1/2"	X
P-23	UTILITY CONNECTION (ICE MAKER)	X	1/2"	X	X	X
P-24	UTILITY CONNECTION (COFFEE & TEA)	1/2"	X	X	X	X
P-25	SHOCK ABSORBER	1/2"	1/2" & 3/4"	1/2"	1/2"	X
P-26	FUNNEL DRAIN	X	X	X	X	3"
P-26A	TRAP SEAL PROTECTOR	X	X	X	X	3"
P-27	WATER PRESSURE GAUGE	X	X	1/4"	X	X
P-28	BALL VALVE-CARBONATOR STOP/BFP PANEL	3/4"	X	X	X	X
P-29	ICE MACHINE TRENCH DRAIN	X	X	X	X	4"
P-30	FILTERED WATER FAUCET	(2) 1/2"	X	X	X	X
P-31	DUMPSTER POST HYDRANT	X	X	3/4"	X	X
P-32	DUMPSTER DRAIN	X	X	X	X	3"
P-33	TRAP PRIMER (MECHANICAL TYPE)	X	X	1/2"	X	X
P-34	DISPENSER BACKFLOW PREVENTER	1/2"	X	X	X	X
P-35	FLOOR DRAIN	X	X	X	X	3"
P-36	BEVERAGE TOWER INDIRECT RECEIVER	X	X	X	X	3"
P-37	FLOOR DRAIN (SQUARE TOP)	X	X	X	X	3"
P-38	HOT WATER CIRCULATING PUMP	X	X	X	1/2"	X
P-39	PRESSURE REDUCING VALVE	X	X	2"	X	X
P-40	WYE STRAINER	X	X	2"	X	X
P-41C	DISHWASHER SUPPLY VALVES - CHAMPION	X	X	3/4"	X	X
P-42	EMERGENCY EYEWASH MIXING VALVE	X	X	1/2"	1/2"	X
P-43	RETHEMALIZER SUPPLY VALVE	X	X	3/4"	X	X

NOTES: ① REFER TO FOOD SERVICE DRAWINGS FOR KITCHEN EQUIPMENT INSTALLATION AND HOOK-UP RESPONSIBILITIES.
② DO NOT MANIFOLD POT OR PREP SINK DRAINS TOGETHER UNLESS ALLOWED BY LOCAL AUTHORITY.



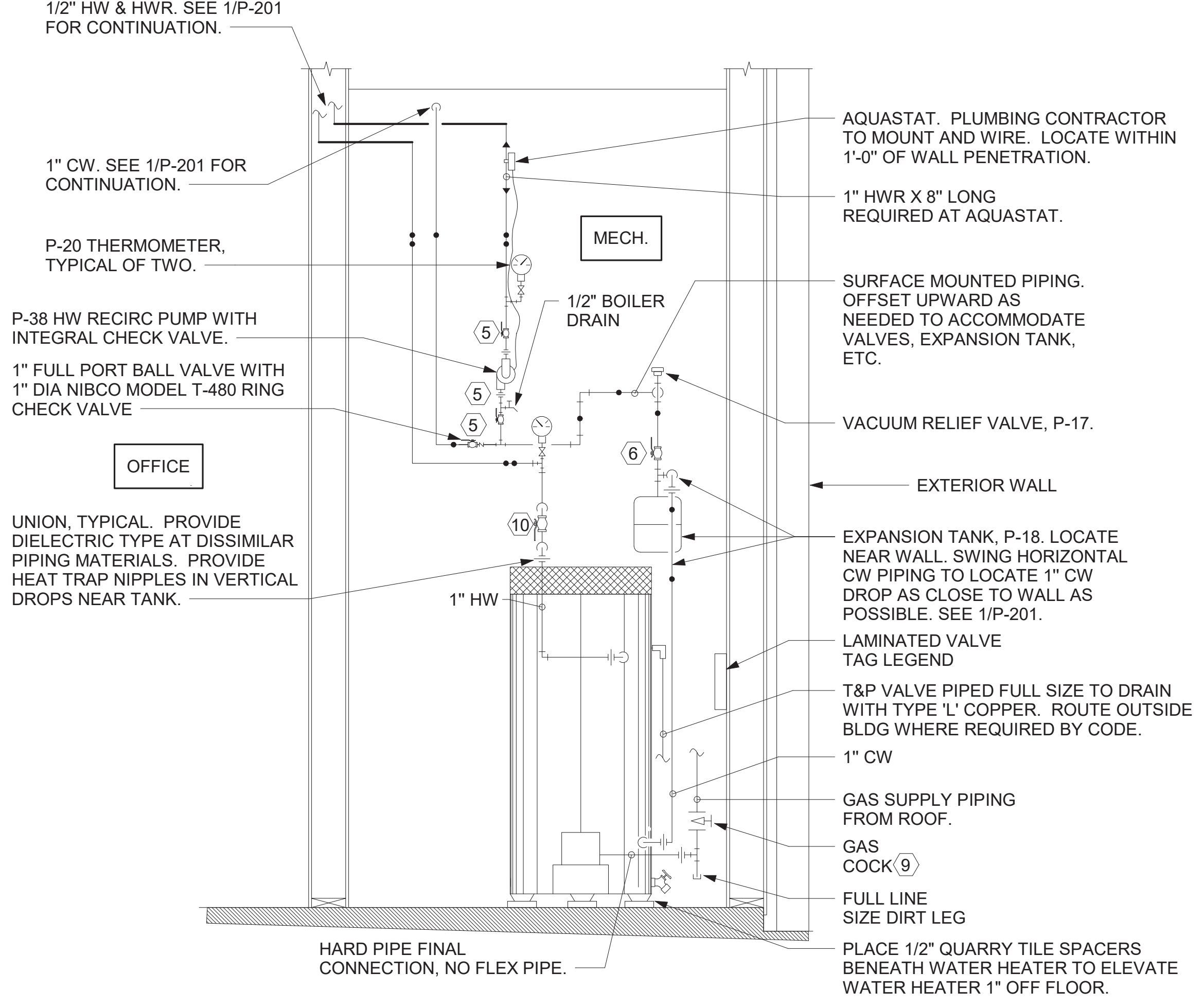
⑤ PIPING AT WATER FILTER NOT TO SCALE

NOTES TO WATER HEATER INSTALLER:

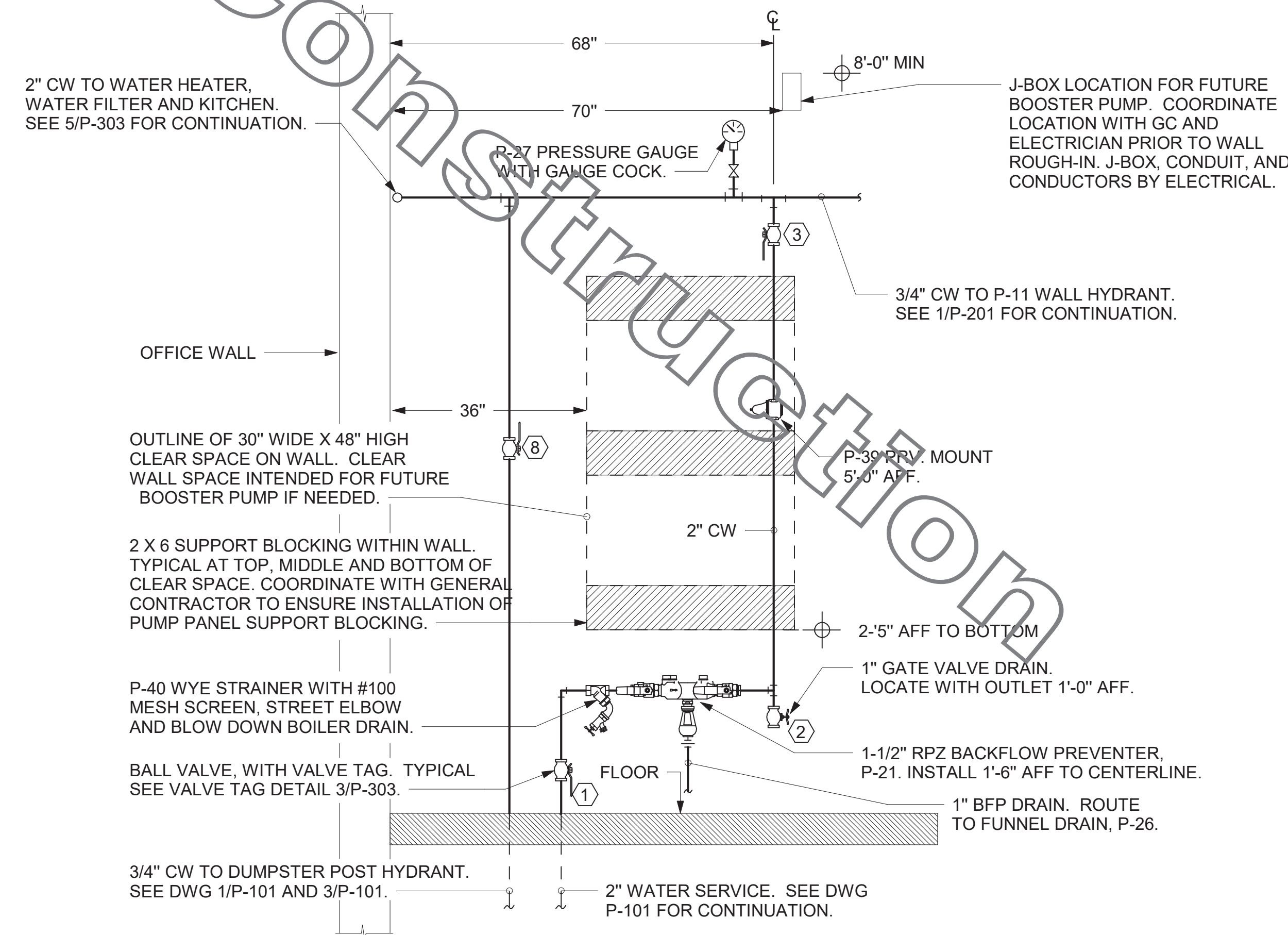
- POSITION VALVES AND TRIM IN MECH ROOM SUCH THAT VALVES AND TRIM ARE UNOBSTRUCTED TO VIEW AND SO THAT ACCESS FOR OPERATION OR REPAIR IS POSSIBLE WITHOUT USE OF STEP LADDERS OR NEED TO DISASSEMBLE ANY COMPONENTS.
- VENT HEATER UP THRU MECH ROOM ROOF AND PROVIDE FRESH AIR PIPING PER MANUFACTURER'S RECOMMENDATIONS.

NOTE OF SPECIAL IMPORTANCE:

- LOCATIONS OF 2" CW RISER AND CLEAR SPACE ARE DIMENSIONED BECAUSE THEY ARE CRITICAL FOR THE FUTURE PUMP PANEL INSTALLATION.
- GENERAL CONTRACTOR SHALL ENSURE OTHER TRADES SHALL NOT INSTALL ANY OTHER BUILDING COMPONENT WITHIN CLEAR SPACE OR WITHIN 10" OF EDGES.



⑥ PIPING AT WATER HEATER NOT TO SCALE



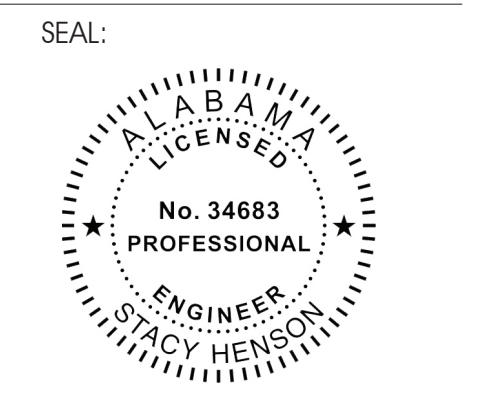
④ PIPING AT WATER SERVICE ENTRANCE IN MECHANICAL ROOM NOT TO SCALE



Chick-fil-A
5200 Buffington Road
Atlanta, Georgia
30349-2998

INTERPLAN
ARCHITECTURE
ENGINEERING
INTERIOR DESIGN
PROJECT MANAGEMENT

604 COURTLAND STREET
SUITE 100
ORLANDO, FLORIDA 32834
PH 407.645.5008
FX 407.629.9124



CHICK-FIL-A
HOOPER COMMONS FSR
1609 MONTGOMERY HIGHWAY
HOOPER, AL 35216

FSR#00822
BUILDING TYPE / SIZE: P13 LSR ALL
RELEASE: v2_20_02

REVISION SCHEDULE		
NO.	DATE	DESCRIPTION
1	01/08/20	GREASE REVIEW
12	10.22.21	OWNER COMMENTS

FOR CONSTRUCTION

CONSULTANT PROJECT # 2019.0323
PRINTED FOR FOR CONSTRUCTION
DATE 08/03/2020
DRAWN BY JL

Information contained on this drawing and in all digital files produced for above named project may not be reproduced in any manner without express written or verbal consent from authorized project representatives.

SHEET
DETAILS AND SCHEDULES

P-303
CHRHR - 11/04/2021 12:37:49 PM

