

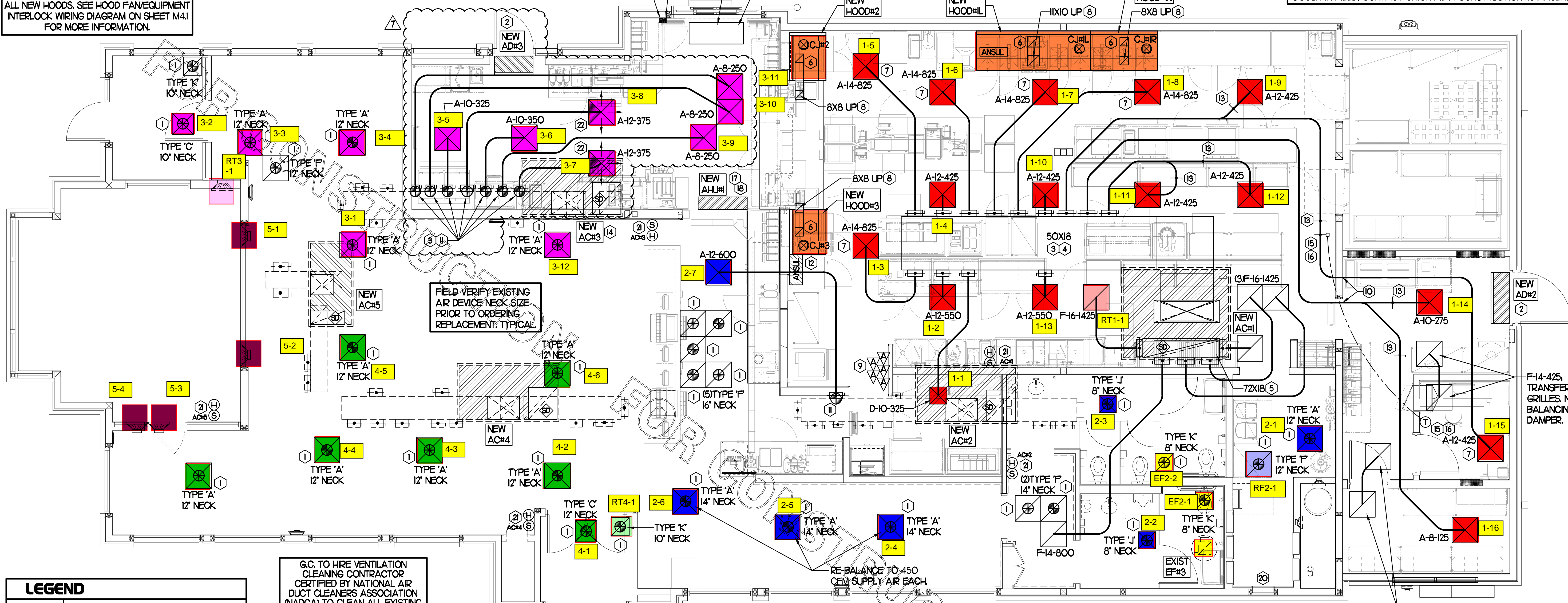
H.E.S. SYSTEM

MECHANICAL CONTRACTOR TO PROVIDE AND INSTALL SUNCOAST H.E.S. SYSTEM FOR ALL NEW HOODS. SEE HOOD FAN/EQUIPMENT INTERLOCK WIRING DIAGRAM ON SHEET M41 FOR MORE INFORMATION.

AIR CURTAIN REMOTE WALL SWITCHES BY MECHANICAL. REFER TO AIR DOOR SCHEDULE AND AIR CURTAIN WIRING DIAGRAM FOR FURTHER INFORMATION. COORDINATE EXACT LOCATION FOR SWITCHES WITH KITCHEN EQUIPMENT AND PLANS.

NEW AIR CURTAIN, AD#1 MOUNTED IN CEILING GRID, CENTERED ON THE DOOR, AT 4" OFF THE EXTERIOR WALL. MECHANICAL CONTRACTOR SHALL ADJUST AIR DEFLECTORS TOWARD AIR DIVERTER BOX.

EXISTING CONDITIONS SHOWN ARE FROM PREVIOUS DRAWINGS. MECHANICAL CONTRACTOR SHALL FIELD VERIFY EXACT LOCATIONS OF ALL DUCT AND DIFFUSERS. IF MAJOR DIFFERENCES OCCUR IN FIELD, CONTACT CHICK-FIL-A CONSTRUCTION MANAGER.



LEGEND

| | |
|----------|-----------------------------------|
| A-12-400 | TYPE - NECK SIZE - CFM |
| | SPIN-IN FITTING, MVD, NO SCOOP |
| | REMOTE TEMPERATURE SENSOR |
| | REMOTE HUMIDITY SENSOR |
| | SMOKE DETECTOR |
| | GREASE ACCESS DOOR TYPE |
| | DIRECTION OF THROW |
| | KEY NOTE REFERENCE |
| | EXISTING START COLLAR |
| | EXISTING RUNOUT TO REMAIN |
| | EXISTING RETURN/EXHAUST (TYP) |
| | EXISTING SUPPLY DIFFUSER (TYP) |
| | NEW RETURN/EXHAUST, UNO. (TYP) |
| | NEW SUPPLY DIFFUSER, UNO. (TYP) |
| | NEW DUCT (TYP) |
| | SMOKE DETECTOR TEST/RESET STATION |

G.C. TO HIRE VENTILATION CLEANING CONTRACTOR CERTIFIED BY NATIONAL AIR DUCT CLEANERS ASSOCIATION (NADCA) TO CLEAN ALL EXISTING DUCTWORK THAT IS TO REMAIN.

SHEET NOTES

- DUCT SIZES SERVING DIFFUSERS AND GRILLES ARE SAME SIZE AS DIFFUSER OR GRILLE NECK UNLESS NOTED OTHERWISE.
- REFER TO ELEVATIONS ON M21 AND HOOD DETAILS ON M41 FOR CAPTURE-LET FANS DUCTING REQUIREMENTS.
- HARDPIPE SHALL BE USED FOR ALL TAKE-OFFS EXCEPT WHERE ALLOWED BY DETAIL 1/M3.1. USE OF FLEXIBLE DUCT SHALL BE LIMITED TO THOSE SITUATIONS WHERE NO OTHER MEANS TO ACCOMPLISH ROUTINGS IS POSSIBLE.
- COORDINATE NEW WORK WITH EXISTING CONDUITS, STRUCTURE AND PIPING. FIELD VERIFY EXISTING CONDITIONS PRIOR TO COMMENCING WORK. CONTRACTOR TO NOTIFY DESIGN TEAM WITHOUT DELAY IF ACTUAL LOCATION OF EXISTING MECHANICAL EQUIPMENT DOES NOT MATCH FLOOR PLAN.
- MECHANICAL CONTRACTOR SHALL BALANCE HVAC SYSTEM AS SHOWN ON THIS PLAN & IN SCHEDULES ON SHEET M3.1. IF AIRFLOWS DIFFER BY MORE THAN 5%, CONTACT CFA CONSTRUCTION MANAGER. TEST AND BALANCE REPORT SHALL BE DONE PRIOR TO STORE TURNOVER AND SUBMITTED TO CFA'S CONSTRUCTION MANAGER.

MECHANICAL FLOOR PLAN

SCALE: 1/4"=1'-0"

KEY NOTES (THIS SHEET ONLY)

- CONNECT NEW AIR DEVICE TO EXISTING TAKE-OFF. IF NECESSARY, MECHANICAL CONTRACTOR SHALL PROVIDE AND INSTALL NEW DUCT IN ORDER TO MAKE CONNECTION TO AIR DEVICE IN NEW LOCATION. ANY FLEX DUCT USED SHALL NOT BE LONGER THAN 4'-0". SEE DETAIL 1/M3.1. COORDINATE AIR DEVICE LOCATIONS WITH ARCHITECTURAL REFLECTED CEILING PLAN.
- AIR CURTAIN MOUNTED OVER DOOR HEADER AT 7'-2" AFF TO BOTTOM OF UNIT. PROVIDE BLOCKING IN WALL BEHIND AIR CURTAIN. USE FACTORY PRE-PUNCHED MOUNTING HOLES ON BACK SIDE OF AIR CURTAIN ONLY. ATTACH AIR CURTAIN TO WALL USING 3/8" LAG BOLTS, LENGTH AS REQUIRED TO FULLY PENETRATE BLOCKING. LOCATE MAGNETIC CONTACT TYPE MICROSWITCH IN DOOR FRAME ON STRIKE SIDE.
- BRANCH TAKE-OFFS SHALL NOT BE LOCATED CLOSER THAN 3'-0" FROM ANY ELBOW INCLUDING THE SUPPLY AIR DROP FROM CURB.
- TRANSITION IN VERTICAL DROP FROM FULL SIZE OF CURB OPENING TO SIZE SHOWN. TRANSITION WITHIN CURB WHERE REQUIRED TO AVOID STRUCTURE. PROVIDE TURNING VANES IN ELBOWS, INCLUDING THE SUPPLY AIR DROP FROM UNIT.
- TRANSITION IN VERTICAL DROP FROM FULL SIZE OF CURB OPENING TO SIZE SHOWN. TRANSITION WITHIN CURB WHERE REQUIRED TO AVOID STRUCTURE. NO TURNING VANES IN ELBOW.
- HALTON MBD DAMPER AT HOOD COLLAR BY MECHANICAL CONTRACTOR. REFER TO SHEET M21 AND M41 FOR FURTHER INFORMATION.
- MECHANICAL CONTRACTOR TO ADJUST PATTERN DEFLECTORS TO THROW STRAIGHT DOWN.
- GREASE DUCT UP THRU ROOF FROM FULL SIZE OF MBD COLLAR. OFFSETS THRU ROOF NOT TO BE GREATER THAN 45 DEGREES. SEE SHEET M1.2 FOR CONTINUATION.
- MOUNT NEW SMOKE DETECTOR TEST/RESET STATIONS FOR ALL A/C UNITS ON WALL. COORDINATE EXACT LOCATION WITH KITCHEN ELEVATIONS AND ELECTRICAL. CONTACT SUNCOAST ENVIRONMENTAL CONTROLS AT 1-877-544-6679 TO PURCHASE A NEW SMOKE DETECTOR TEST/RESET STATION FOR EACH RTU.
- ROUTE DUCT BETWEEN WALL STUDS ABOVE CEILING. COORDINATE WITH ARCH AND STRUCTURAL FOR EXACT LOCATION. USE 1" WRAP AT WALL PENETRATION.
- PROVIDE & INSTALL NEW SPIN-IN COLLAR AND ROUTE NEW DUCT TO NEW GRILLE AS SHOWN.
- ANSUL UTILITY CABINET. LOCATE TOP OF CABINET 0'-2" BELOW CEILING. COORDINATE FINAL MOUNTING LOCATION WITH KITCHEN EQUIPMENT.
- RUSKIN MODEL MDRS25 OR EQUIVALENT MANUAL VOLUME DAMPER WITH LOCKING QUADRANT HANDLE.
- G.C. TO CONFIRM EXACT LOCATION OF AC#3 MAIN DUCT RUNS RELATIVE TO PROPOSED NEW WALL PRIOR TO START OF CONSTRUCTION. CONTACT JLL PM OR AOR IF DETERMINED THERE IS A CONFLICT.
- YOUNG REGULATOR 12" MODEL 2010 ROUND ZONE DAMPER WITH MODEL T-312CE AUTOMATIC CHANGEOVER THERMOSTAT. MOUNT TSTAT AT 4'-0" AFF. POWER OPEN/SPRING CLOSE. ADJUST MECHANICAL LIMIT FOR 50 CFM MINIMUM AIRFLOW. CHICK-FIL-A HAS A NATIONAL ACCOUNT WITH TOM BARRON COMPANY FOR THE ZONE DAMPER. THE MECHANICAL CONTRACTOR SHALL PURCHASE THE ZONE DAMPER DIRECTLY FROM TOM BARRON COMPANY. CONTACT MR. SCOTT GEORGE AT 404-351-1010. FOR PRICING AND AVAILABILITY. ZONE DAMPERS NOT PURCHASED THRU TOM BARRON COMPANY WILL NOT BE ACCEPTED.
- PROVIDE 120V/24V 50 VA TRANSFORMER TO SERVE YOUNG REGULATOR ZONE DAMPER ACTUATOR AND THERMOSTAT. POWER TRANSFORMER FROM 120V POWER CIRCUIT THAT REMAINS LIVE 24/7. PROVIDE ALL NECESSARY WIRING AND COMPONENTS TO MAKE CONTROL AND POWER CONNECTIONS TO TRANSFORMER, ZONE DAMPER, AND THERMOSTAT PER MANUFACTURER'S IOM. SEE DETAIL ON SHEET M41 FOR MORE INFORMATION.
- MOUNT AIR HANDLER ON OVERHEAD WALL ABOVE CASED OPENING. MOUNT UNIT AT 12" ABOVE CASED OPENING. ROUTE REFRIGERANT PIPING ABOVE CEILING AND UP THRU ROOF TO CONDENSING UNIT, CU#1. SEE SHEET M1.2 FOR CONDENSING UNIT LOCATION. REFRIGERANT PIPING BELOW ROOF SHALL BE HIDDEN WITHIN WALLS AND CEILINGS.
- ROUTE CONDENSATE ABOVE CEILING FROM AHU#1 AND DOWN IN WALL CAVITY TO EXIT POINT 12" ABOVE FLOOR. DRAIN TO TERMINATE INTO FLOOR DRAIN LOCATED BEHIND ICE MAKER IN DRIVE THRU WITH CODE APPROVED AIR GAP. COORDINATE EXACT LOCATION OF DRAIN WITH PLUMBING PLANS. CONDENSATE PIPING SHALL BE TYPE K COPPER WITH 1/2" ARMAFLEX INSULATION. CONDENSATE MUST SLOPE MIN. 1/8" PER FOOT TO TERMINATION POINT. CONTRACTOR SHALL INSTALL A CONDENSATE LIFT PUMP IN ORDER TO ROUTE CONDENSATE ABOVE CEILING.
- MOUNT AHU#1 THERMOSTAT ON WALL NEXT TO AD#1 REMOTE WALL SWITCHES. SEE SCHEDULE ON SHEET M3.1 FOR INTERLOCK WITH T500 PANEL.
- CONTACT SUNCOAST ENVIRONMENTAL CONTROLS TO PURCHASE A NEW TSTAT FOR EACH NEW RTU. NEW TSTATS SHALL BE INSTALLED IN EXISTING CFA T500 PANEL. CONTROL WIRING TERMINATIONS BETWEEN NEW TSTATS, NEW SENSORS, AND NEW RTUS BY MECHANICAL CONTRACTOR. REFER TO WIRING DIAGRAM ON SHEET M4.1.
- MOUNT NEW REMOTE TEMP SENSOR AND NEW TRANE HUMIDITY SENSOR FOR ROOFTOP UNIT AS NOTED BELOW (OR ABOVE WAINGSCOTING IF APPLICABLE). ROUTE NEW WIRING FOR NEW REMOTE TEMP SENSOR TO NEW TSTAT IN CFA T500 PANEL. ROUTE NEW WIRING FOR NEW TRANE HUMIDITY SENSOR TO UNIT ON ROOF. REFER TO WIRING DIAGRAM ON SHEET M4.1.
 - AC#1: MOUNT NEW REMOTE TEMP SENSOR ON WALL AT 5'-8" AFF. COORDINATE FINAL MOUNTING LOCATION IN FIELD WITH KITCHEN EQUIPMENT, SHELVING, AND ELECTRICAL. MOUNT NEW TRANE HUMIDITY SENSOR DIRECTLY ABOVE REMOTE TEMP SENSOR.
 - AC#2, AC#4, & AC#5: MOUNT NEW SENSORS IN THE SAME LOCATION AS DEMOLISHED SENSORS.
 - AC#3: MOUNT NEW REMOTE TEMP SENSOR ON WALL AT 5'-0" AFF. MOUNT NEW TRANE HUMIDITY SENSOR DIRECTLY ABOVE REMOTE TEMP SENSOR.
- MECHANICAL CONTRACTOR TO CLOSE THE AIR PATTERN DEFLECTORS ON THE SHADED SIDE.

TOTAL AIR BALANCE SCHEDULE

| EQUIPMENT MARK | ACH1 (NEW) | AC#2 (NEW) | AC#3 (NEW) | AC#4 (NEW) | AC#5 (NEW) | EF#1 (NEW) | EF#2 (NEW) | EF#3 (EXIST) | TOTAL |
|-----------------|--|-------------|-------------|-------------|------------|-----------------|---------------|--------------|--------|
| SERVES | KITCHEN | SIDE DINING | MAIN DINING | MAIN DINING | PLAY AREA | HOOD#1L HOOD#1R | HOOD#2 HOOD#3 | REST-ROOMS | |
| SUPPLY AIR CFM | 8,500 | 2,830 | 4,000 | 2,765 | 1,800 | | | | 19,895 |
| RETURN AIR CFM | 6,500 | 2,080 | 3,000 | 2,165 | 1,500 | | | | 15,245 |
| OUTSIDE AIR CFM | 2,000 | 750 | 1,000 | 600 | 300 | | | | +4,650 |
| EXHAUST CFM | | | | | | 1,913 | 1,402 | 400 | -3,715 |
| PRESSURIZATION | | | | | | | | | +935 |
| REMARKS | ADJUST AND VERIFY BALANCE OF ALL HVAC EQUIPMENT IS AS SHOWN IN ORDER TO MAINTAIN BUILDING AIR BALANCE. | | | | | | | | |



Chick-fil-A

Chick-fil-A
5200 Buffington Road
Atlanta, Georgia 30349



Kurzynske & Associates
CONSULTING ENGINEERS
2705 Lebanon Pike - Suite One
Nashville, Tennessee 37214
Telephone: (615) 255-5203



CHICK-FIL-A
ERIE
7160 PEACH TREE
ERIE, PA 16509

FSR#01879

BUILDING TYPE / SIZE: S06C
RELEASE: v05.22

REVISION SCHEDULE

| NO. | DATE | DESCRIPTION |
|-----|------------|-------------|
| 7 | 08/17/2023 | DT HVAC |

CONSULTANT PROJECT # 22115.HF.R
PRINTED FOR CONSTRUCTION
DATE 01/11/2023
DRAWN BY DSF

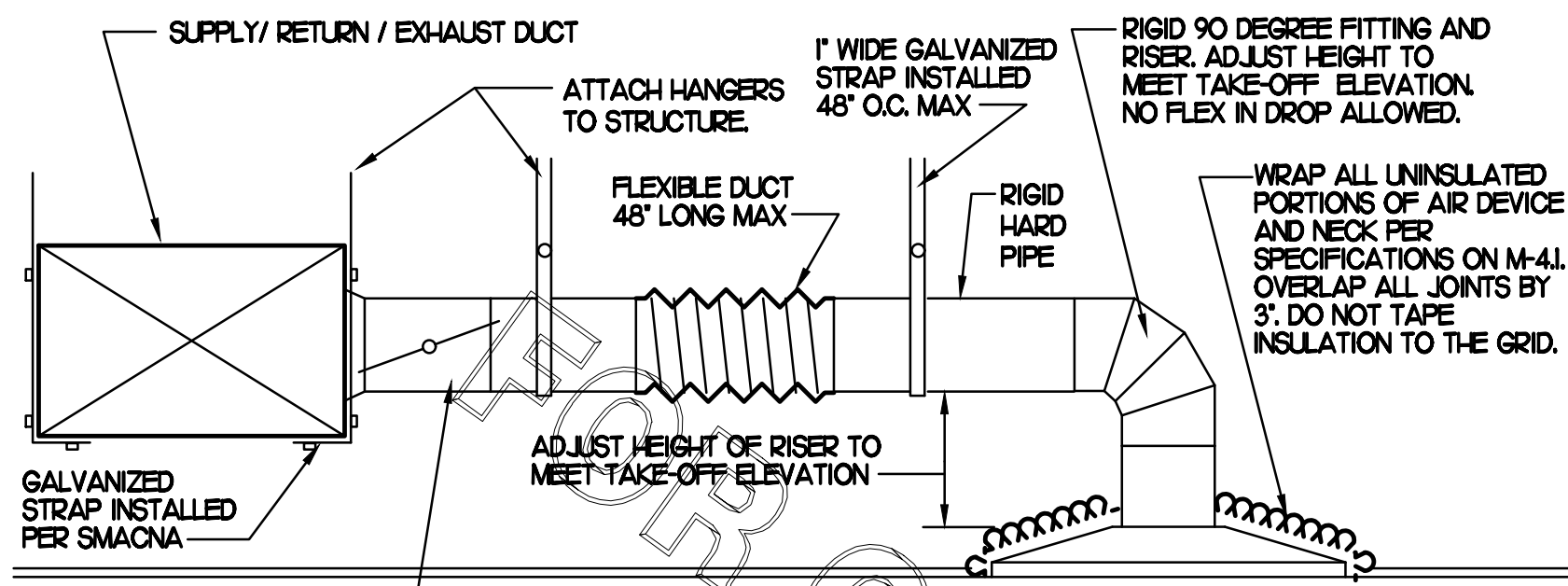
Information contained on this drawing and in all digital files produced for above named project may not be reproduced in any manner without express written or verbal consent from authorized project representatives.

SHEET
MECHANICAL
FLOOR PLAN

SHEET NUMBER

M1.1

CONSTRUCTION



1 SAG/RAG/GRILLE TAKE-OFF

NO SCALE

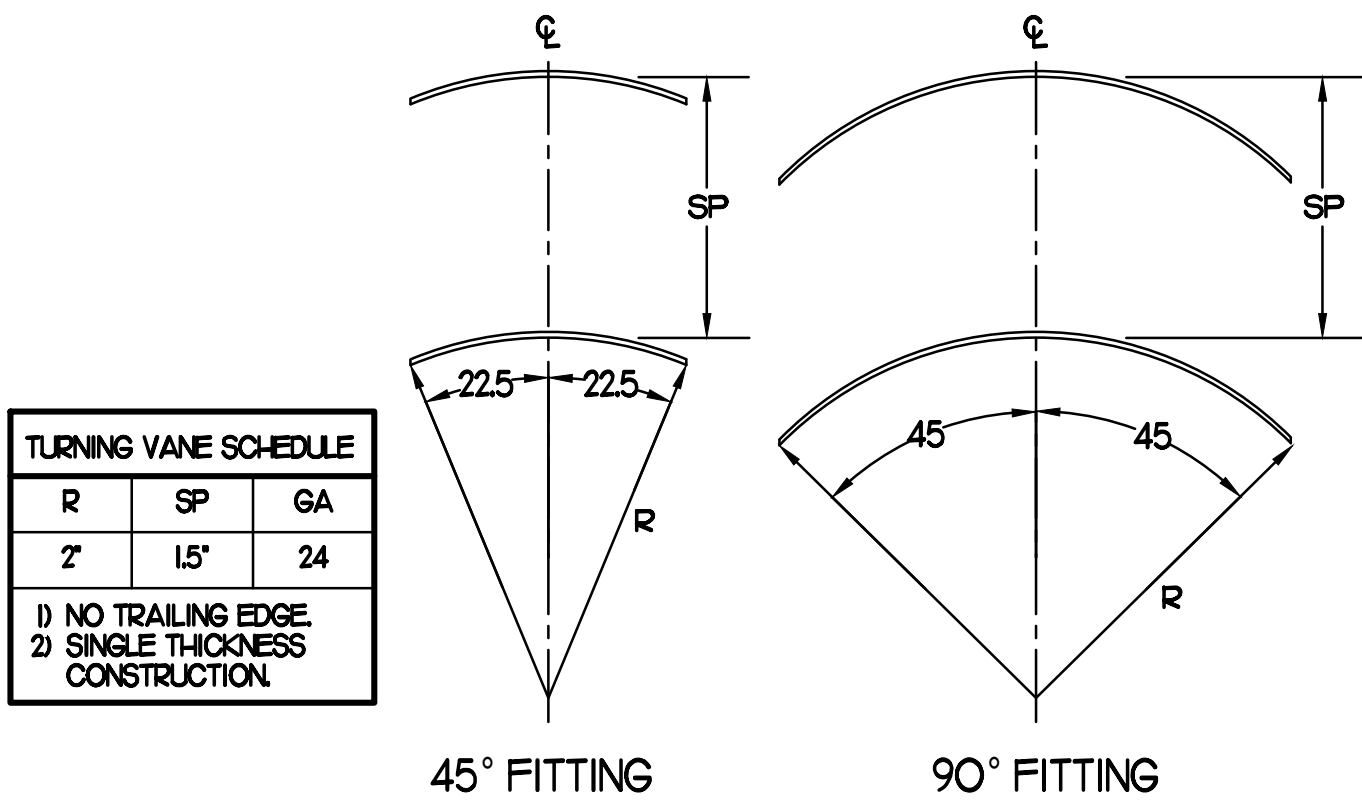
CHICK-FIL-A HAS A NATIONAL ACCOUNT WITH TOM BARROW COMPANY FOR THE ROYAL METAL START COLLARS. THE MECHANICAL CONTRACTOR IS REQUIRED TO PURCHASE THE ROYAL METAL START COLLARS DIRECTLY FROM TOM BARROW COMPANY. CONTACT MR. SCOTT GEORGE AT 404-351-1010 FOR PRICING AND AVAILABILITY. ROYAL METAL START COLLARS NOT PURCHASED THRU TOM BARROW COMPANY WILL NOT BE ACCEPTED.

DAMPER CONTROL HANDLE MUST BE LEFT EXPOSED, LOCATED ON THE LEFT OR RIGHT SIDE WHEN INSTALLED ON HORIZONTAL DUCTS, AND LOCATED ON THE BOTTOM WHEN INSTALLED ON VERTICAL DUCTS. DAMPER CONTROL HANDLES NOT INSTALLED IN THE CORRECT ORIENTATION AS SPECIFIED ABOVE WILL NOT BE ACCEPTED. ATTACH A YELLOW FLUORESCENT CONSTRUCTION RIBBON TO THE HANDLE. RIBBON MUST BE 12" LONG AND BE EASILY IDENTIFIABLE FOR TEST AND BALANCE CONTRACTOR.

DO NOT APPLY START COLLAR OVER DUCT WRAP.
MINIMUM 1'-0" OF RIGID DUCT AFTER SPIN-IN.
DAMPER CONTROL HANDLE
MAIN OR BRANCH MAIN
ROYAL METAL STICK-ON START COLLAR.
AIR FLOW
STICK-ON FITTINGS MUST BE SECURED WITH A SCREW AT EVERY PREPUNCHED HOLE.

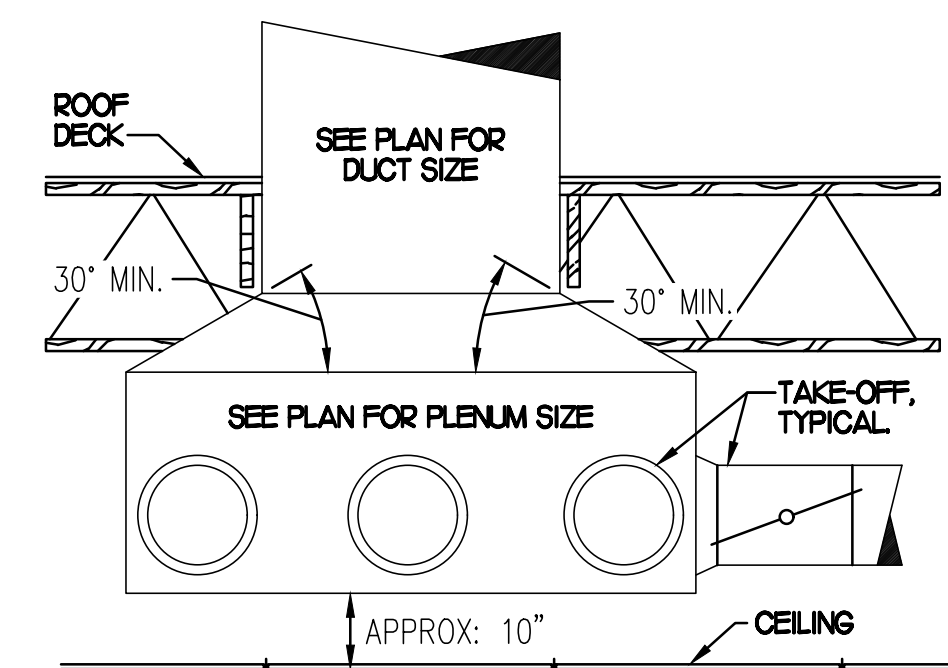
2 START COLLAR

NO SCALE



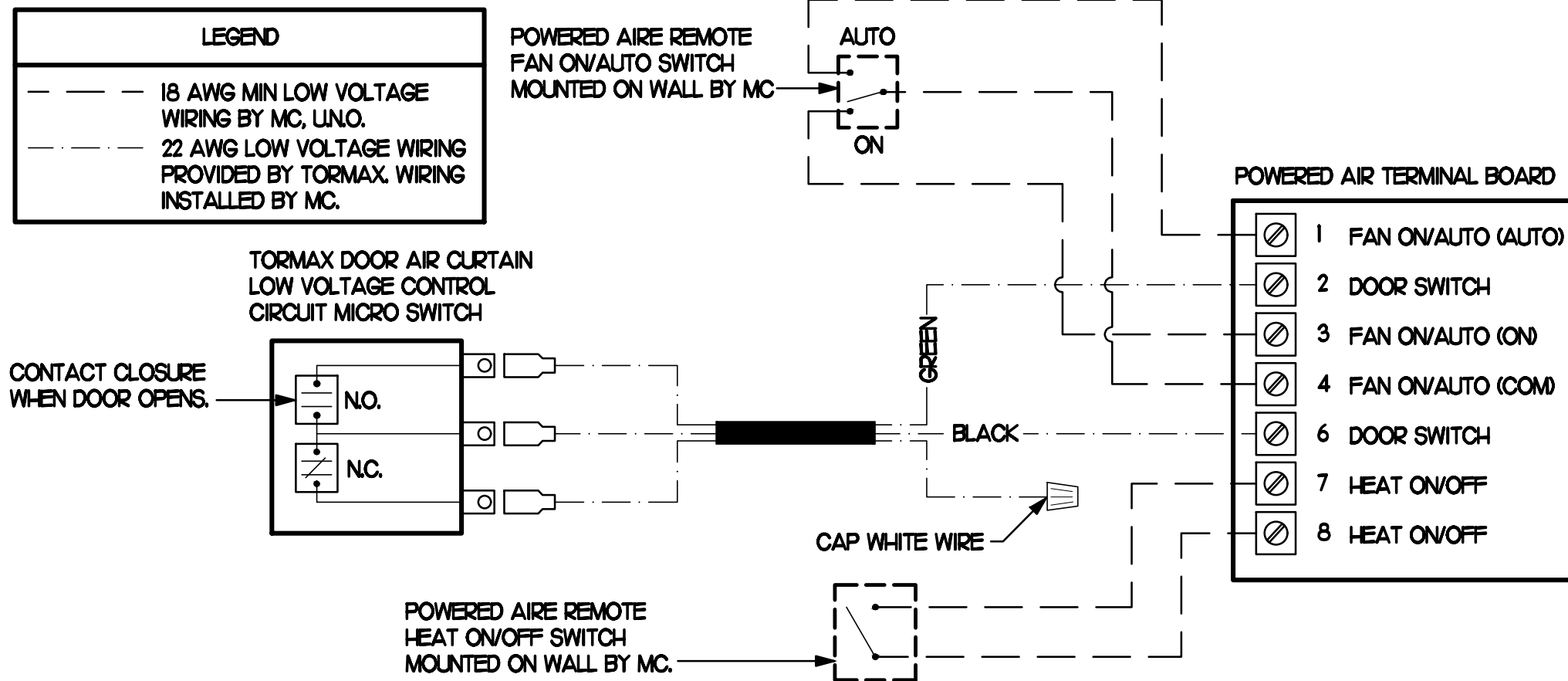
3 TURNING VANES

NO SCALE



5 RETURN DROP GEOMETRY

NO SCALE



4 AIR CURTAIN WIRING DIAGRAM

NO SCALE

EXHAUST FAN SCHEDULE

| MARK | CFM | ESP | RPM | TIP SPEED (FPM) | HP (WATTS) | AREA SERVED | MODEL | MANUFACTURER | REMARKS |
|--------------|------|------|------|-----------------|------------|-----------------|---------|--------------|---------|
| EF#1 (NEW) | 1983 | 0.75 | 1331 | 5,226 | 3/4 | HOOD#1 & HOOD#R | 150 CFS | LOREN COOK | H2 |
| EF#2 (NEW) | 1402 | 0.95 | 1199 | 4,708 | 3/4 | HOOD#2 & HOOD#3 | 150 CFS | LOREN COOK | H2 |
| EF#3 (EXIST) | 400 | - | - | - | - | RESTROOMS | - | EXISTING | - |

NOTES

- GREASE EXHAUST FAN RPM BASED ON 80 DEGREE F AIR AT 1000 FEET ABOVE SEA LEVEL.
- GREASE EXHAUST FANS TO BE UL 762 LISTED.
- CHICK-FIL-A HAS A NATIONAL ACCOUNT WITH TOM BARROW COMPANY FOR FANCLUB PACKAGE. MECHANICAL CONTRACTOR IS REQUIRED TO PURCHASE THE FANCLUB PACKAGE DIRECTLY FROM TOM BARROW COMPANY. CONTACT MR. SCOTT GEORGE AT 404-351-1010 FOR PRICING AND AVAILABILITY. FANS AND CURBS NOT PURCHASED THRU TOM BARROW COMPANY WILL NOT BE ACCEPTED.

REMARKS

- PROVIDE AND INSTALL ROOFTOP SOLUTIONS G2 DRIP GUARD, MC. TO CONTACT ROOFTOP SOLUTIONS AT 800-913-7034
- PROVIDE FACTORY INSTALLED, PRE-WIRED, NEMA 3 NON-FUSED DISCONNECT. COORDINATE WITH E.C.
- INTEGRAL THERMAL OVERLOAD WITH AUTOMATIC RESET.
- UPBLAST, ARRANGEMENT 10, C/W ROTATION. SEE PLANS TO CONFIRM CONFIGURATION.
- PROVIDE FACTORY STEEL FAN WHEEL.
- PROVIDE FACTORY STEEL INLET FLANGE AND INLET COMPANION FLANGE.
- PROVIDE FACTORY WEATHER HOUSING W/ HINGED ACCESS DOOR.
- PROVIDE FACTORY DRAIN CONNECTION.
- PROVIDE FACTORY BOLTED ACCESS DOOR ON SCROLL.
- PROVIDE FACTORY STEEL OUTLET COMPANION FLANGE.
- UTILITY SET FAN CURB AND ASSOCIATED EXHAUST DUCT CURB PROVIDED BY TOM BARROW COMPANY.
- PROVIDE FACTORY BELT DRIVE WITH ADJUSTABLE MOTOR SHEAVE AND SPARE BELT.

AIR DOOR SCHEDULE

| MARK | CFM | VELOCITY | HEATING CAP | HP | AREA SERVED | MODEL | MANUFACTURER | REMARKS |
|------------|-------|----------|-------------|-----|-----------------|----------|--------------|---------|
| AD#1 (NEW) | 1543 | 2338 | 10 KW | 3/4 | DRIVE THRU | CHA-148E | POWERED-AIRE | 2-5 |
| AD#2 (NEW) | 3,867 | 4,220 | NA | 3/4 | REAR DOOR | RBT-148 | POWERED-AIRE | 1 |
| AD#3 (NEW) | 2,899 | 4,220 | NA | 3/4 | DRIVE THRU DOOR | RBT-136 | POWERED-AIRE | 1 |

NOTES

- CHICK-FIL-A HAS A NATIONAL ACCOUNT WITH TOM BARROW COMPANY FOR THE AIR DOORS. THE MECHANICAL CONTRACTOR SHALL PURCHASE THE AIR DOORS DIRECTLY FROM TOM BARROW COMPANY. CONTACT MR. SCOTT GEORGE AT 404-351-1010, FOR PRICING AND AVAILABILITY. AIR DOORS NOT PURCHASED THRU TOM BARROW COMPANY WILL NOT BE ACCEPTED.

REMARKS

- FACTORY PROVIDED MAGNETIC DOOR CONTACT WITH FACTORY INSTALLED LOW VOLTAGE CONTROLS LOCATED IN AIR DOOR CABINET.
- FACTORY PROVIDED, WIRED, AND UNIT MOUNTED SPEED CONTROLLER LOCATED ABOVE CEILING.
- FACTORY WIRED DISCONNECT.
- FACTORY PROVIDED, FIELD INSTALLED REMOTE WALL SWITCHES FOR HEATING ON/OFF AND FAN ON/AUTO SWITCH. SEE AIR CURTAIN WIRING DIAGRAM DETAIL THIS SHEET.
- PROVIDE WITH DIVERTER BOX FROM TOM BARROW COMPANY. PROVIDE WITH MOUNTING BRACKETS PER MANUFACTURER'S RECOMMENDATIONS. INSTALL PER MANUFACTURER'S MOUNTING INSTRUCTIONS.

AIR DEVICE SCHEDULE

| MARK | DESCRIPTION | LOCATION | NECK SIZE | FACE SIZE | FRAME TYPE | REMARKS |
|------|--|---------------------|-----------|-----------|------------|-----------|
| A | PRICE MODEL APDC ALUMINUM SUPPLY AIR DIFFUSER WITH INDIVIDUALLY ADJUSTABLE CURVED AIR PATTERN CONTROLLERS. | DINING AREA KITCHEN | SEE PLAN | 24X24 | LAY-IN | 1,7 |
| C | PRICE MODEL SMCD STEEL SUPPLY AIR DIFFUSER FIELD ADJUSTABLE AIR PATTERN CONTROLLERS. | ENTRYS | 14X14 | 20X20 | BEVELLED | 1,3,5,6 |
| D | PRICE MODEL APDC ALUMINUM SUPPLY AIR DIFFUSER WITH INDIVIDUALLY ADJUSTABLE CURVED AIR PATTERN CONTROLLERS. | DINING AREA KITCHEN | SEE PLAN | 16X16 | LAY-IN | 1,7 |
| F | PRICE MODEL 80 EGGRATE RETURN AIR GRILLE WITH REMOVABLE WHITE COKE. FACTORY FLAT BLACK BACKPAN AND ROUNO NECK. | DINING KITCHEN | SEE PLAN | 24X24 | LAY-IN | 1,7 |
| J | PRICE MODEL SMCD STEEL SUPPLY AIR DIFFUSER FIELD ADJUSTABLE AIR PATTERN CONTROLLERS. | RESTROOMS | 10X10 | 16X16 | BEVELLED | 1,2,3,5,6 |
| K | PRICE MODEL APDDR ALUMINUM PERFORATED FACE RETURN AIR GRILLE. | RESTROOMS ENTRYS | 14X14 | 17X17 | SURFACE | 1,4,5,6 |

NOTES

- MECHANICAL CONTRACTOR SHALL PURCHASE THE AIR DEVICES DIRECTLY FROM TOM BARROW COMPANY. CONTACT MR. SCOTT GEORGE AT 404-351-1010, FOR PRICING AND AVAILABILITY. AIR DEVICES NOT PURCHASED THRU TOM BARROW COMPANY WILL NOT BE ACCEPTED.

REMARKS

- STANDARD OFF WHITE FINISH.
- PROVIDE MODEL VCS3 NECK DAMPER.
- SEE DRAWING M1 FOR THROW.
- PROVIDE MODEL VC07 NECK DAMPER ON GRILLES IN RESTROOMS.
- PROVIDE BACKPAN MC TO SEAL JOINTS WITH MASTIC AND INSULATE EXTERNALLY.
- FIELD INSULATE BACKPAN AS SHOWN ON DETAIL 1/MS1.
- FACTORY INSULATED R-6 BACKPAN.

GAS FIRED ROOFTOP UNIT SCHEDULE

| MARK | COOLING CAPACITY (MEH) | | HEATING CAPACITY (MEH) | | FAN SECTION (CFM) | | MODEL | MANUFACTURER | REMARKS | | | |
|------------|------------------------|------|------------------------|--------|-------------------|-------------|-------|--------------|---------|-------------|-------|-------------|
| | TOTAL | SENS | INPUT | OUTPUT | SUPPLY | O.A. HP ESP | | | | | | |
| ACH (NEW) | 2763 | 2013 | 4000 | 3240 | 2 | 8,500 | 2,000 | 62 | 0.8 | YSJ300A350H | TRANE | H4 |
| ACH2 (NEW) | 1031 | 73.8 | 2000 | 1620 | 2 | 2,830 | 750 | 31 | 0.8 | YSJ02A350H | TRANE | H3,5 |
| ACH3 (NEW) | 1244 | 95.9 | 2400 | 1940 | 2 | 4,000 | 1000 | 31 | 0.8 | YSJ20A350H | TRANE | H3,6 |
| ACH4 (NEW) | 932 | 69.7 | 2000 | 1620 | 2 | 2,765 | 600 | 31 | 0.8 | YSJ09A350H | TRANE | H3,7 |
| ACH5 (NEW) | 586 | 43.6 | 1300 | 1040 | 1 | 1,800 | 300 | 10 | 0.8 | YH067E3RH | TRANE | 1,4-12,8-20 |

NOTES

- COOLING CAPACITIES ARE GROSS, BASED ON INDOOR EDB 80F, INDOOR EWB 67F, OUTDOOR EDB 95F.
- FOR PROPER BUILDING AIR BALANCE, VERIFY AMOUNT OF OUTSIDE AIR PROVIDED BY ALL EXISTING UNITS. ADJUST AS PER SCHEDULE IF NECESSARY.
- VERIFY MIN 10' DISTANCE OF O.A. INTAKE OPENINGS OF A/C UNITS FROM ANY EXISTING SOURCE OF AIR POLLUTION (EXHAUST FAN, COMBUSTION FLE, VENT ETC). IF SUCH CONDITIONS EXIST, CONTRACTOR IS REQUIRED TO DUCT OUTSIDE AIR INTAKE ON ROOF AWAY FROM ANY SUCH SOURCE.

REMARKS

- PROVIDE DIFFERENTIAL ENTHALPY ECONOMIZER WITH FIELD INSTALLED POWER EXHAUST.
- PROVIDE FACTORY INSTALLED NON-FUSED DISCONNECT.
- PROVIDE FACTORY INSTALLED AND UNIT POWERED 115V GFI SERVICE OUTLET.
- PROVIDE FACTORY INSTALLED RETURN SIDE SMOKE DETECTOR.
- PROVIDE 2" MESH 6" THROW AWAY FILTERS.
- PROVIDE HINGED PANELS FOR FILTER ACCESS, FAN MOTOR ACCESS, COMPRESSOR ACCESS AND CONTROL COMPARTMENT ACCESS.
- ADJUST GAS MANIFOLD PRESSURE AT LOCATIONS WHERE ELEVATION EXCEEDS 2000' ABOVE SEA LEVEL AS RECOMMENDED BY MANUFACTURER.
- PROVIDE FACTORY INSTALLED COIL HAIL GUARD.
- PROVIDE HOT GAS REPEAT OPTION AND FACTORY PROVIDED REMOTE HUMIDITY SENSOR (BAYSENS036A).
- PROVIDE FACTORY INSTALLED CONDENSATE DRAIN PAN OVERFLOW SWITCH.
- PROVIDE FACTORY INSTALLED MULTI-SPEED FAN OPTION.
- PROVIDE WITH FACTORY SUPPLY AIR TEMPERING KIT.
- PROVIDE WITH HIGH FALLT SCOR (650).
- PROVIDE WITH CURBS PLUS ADAPTER CURB. UNIT BEING REPLACED IS LENNOX MODEL LG-240H. ADAPTER CURB IS PROVIDED BY TRANE AS PART OF THE TOTAL EQUIPMENT PACKAGE.
- PROVIDE WITH CURBS PLUS ADAPTER CURB. UNIT BEING REPLACED IS LENNOX MODEL LGA102H. ADAPTER CURB IS PROVIDED BY TRANE AS PART OF THE TOTAL EQUIPMENT PACKAGE.
- PROVIDE WITH CURBS PLUS ADAPTER CURB. UNIT BEING REPLACED IS LENNOX MODEL LGA120H. ADAPTER CURB IS PROVIDED BY TRANE AS PART OF THE TOTAL EQUIPMENT PACKAGE.
- PROVIDE WITH CURBS PLUS ADAPTER CURB. UNIT BEING REPLACED IS LENNOX MODEL LGA090H. ADAPTER CURB IS PROVIDED BY TRANE AS PART OF THE TOTAL EQUIPMENT PACKAGE.
- PROVIDE WITH CURBS PLUS ADAPTER CURB. UNIT BEING REPLACED IS LENNOX MODEL LGA060H. ADAPTER CURB IS PROVIDED BY TRANE AS PART OF THE TOTAL EQUIPMENT PACKAGE.
- EC PROVIDED AND INSTALLED DISCONNECT W/ CURRENT LIMITING FUSE.
- PROVIDE FACTORY INSTALLED 115V GFI SERVICE OUTLET.

DUCTLESS SPLIT SYSTEM HEAT PUMP UNIT SCHEDULE

| MARK | COOLING CAPACITY (MEH) | | HEATING CAPACITY (MEH) | | EFFICIENCIES | FAN SECTION (CFM) | ELECTRICAL DATA | R-410A MODEL | MFR | | | | |
|---------------|------------------------|-----|------------------------|-----|--------------|-------------------|-----------------|--------------|-----|----------|------------|----------------|------------|
| | MIN | MAX | MIN | MAX | | | | | | SEER | HSPF | AIR FLOW (MET) | NCA (MCCP) |
| ALUMIUM (NEW) | 180 | 335 | 180 | 400 | 16.2 | 10.0 | 635-730-830 | 28 | 140 | 208/1160 | PKA-A36KA7 | PLZ-HA36N4A5 | MTSLBISH |

NOTES

- MECHANICAL CONTRACTOR SHALL PURCHASE THE SPLIT SYSTEM HEAT PUMP DIRECTLY FROM TRANE/MTSLBISH. CONTACT MS. LALRI FRANKOWSKI AT 630-400-4285, FOR PRICING AND AVAILABILITY.

REMARKS

- ELECTRICIAN TO PROVIDE NON-FUSED DISCONNECT.
- MECHANICAL TO PROVIDE AND INSTALL REFRIGERANT PIPING AS PER MFR RECOMMENDATIONS.
- PROVIDE ENGRAVED PLASTIC LABEL AT AHU AND CU WITH 1" HIGH WHITE LETTERS ON A BLACK BACKGROUND RIVETED TO UNIT CABINET.
- PROVIDE WITH ADEQUATE REFRIGERANT LINE SET. FIELD VERIFY DISTANCE FROM WHERE CONDENSER IS TO BE SET TO AIR HANDLER LOCATION PRIOR TO ORDERING.
- PROVIDE WITH WALL MOUNTED THERMOSTAT (TAR-CT01MAU-SBL) USE TWO-WIRE, STANDARD, NON-POLAR CONTROL WIRE TO CONNECTOR TB5 ON INDOOR UNIT CONTROLLER. PROGRAM THERMOSTAT CONTROLS TO MATCH DRIVE-THRU RTU SETPOINTS.
- PROVIDE PAC-SE56RA-E CONNECTOR AT INDOOR UNIT (CONNECTOR CN3), WIRE ORANGE AND RED WIRES TO SPARE POLE ON RELAY R-1 IN SNUOAST T-500 PANEL (TERMINALS 11 AND 7 RESPECTIVELY) AND CAP THE BROWN WIRE.
- PROVIDE WITH CONDENSATE PUMP (BLUE DIAMOND MAX) BLUE MODEL# X87-721).



Chick-fil-A

Chick-fil-A
5200 Buffington Road
Atlanta, Georgia 30349



Kurzynske & Associates
CONSULTING ENGINEERS
2705 Lebanon Pike - Suite One
Nashville, Tennessee 37214
Telephone: (615) 255-5203



6-23-23

CHICK-FIL-A
ERIE
7160 PEACH TREE
ERIE, PA 16509

FSR#01879

BUILDING TYPE / SIZE: S06C
RELEASE: V05.22

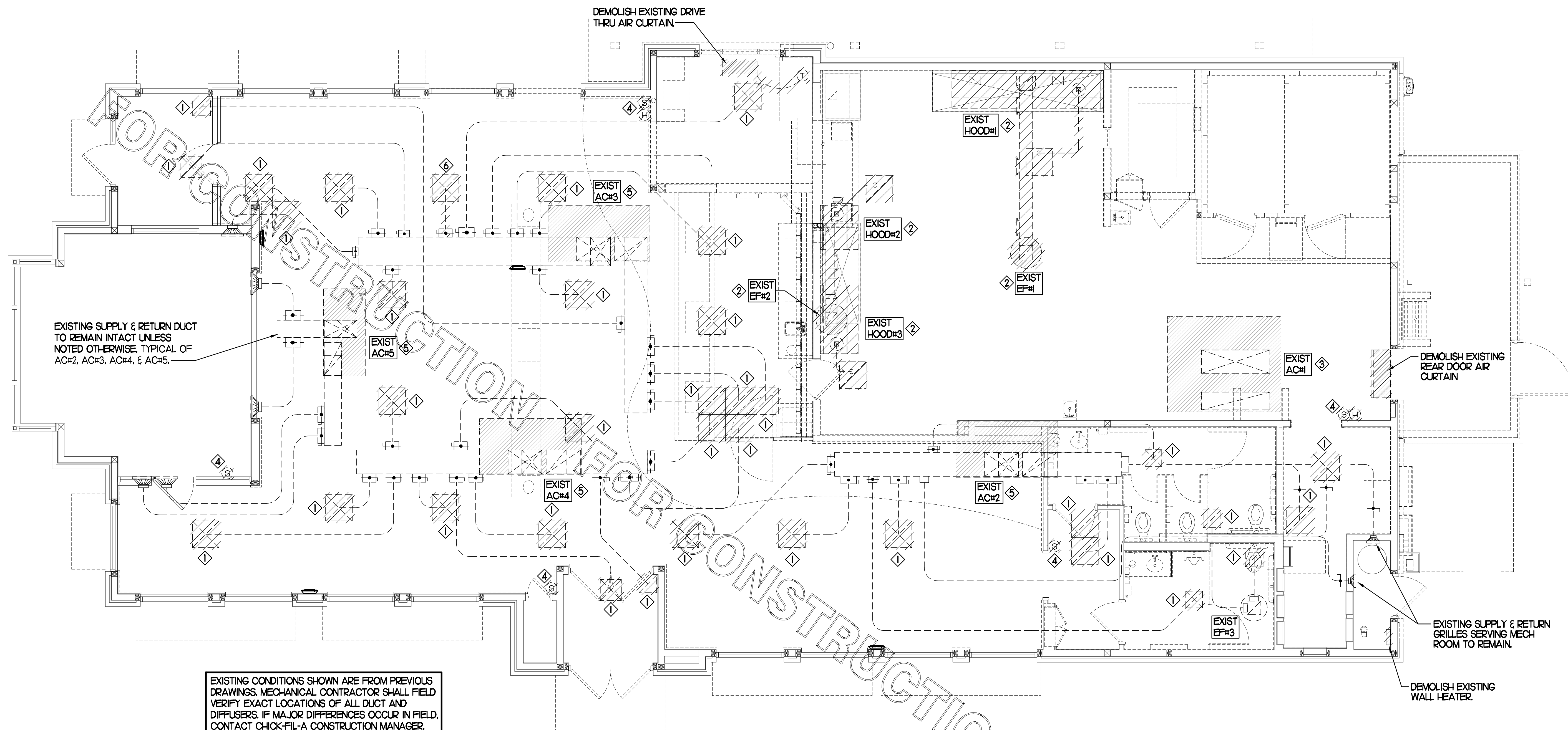
REVISION SCHEDULE

| NO. | DATE | DESCRIPTION |
|-----|------|-------------|
| | | |

CONSTRUCTION

CONSULTANT PROJECT # 22115.HF.R
PRINTED FOR CONSTRUCTION
DATE 01/11/2023
DRAWN BY DSF
Information contained on this drawing and in all digital files produced for above named project may not be reproduced in any manner without express written or verbal consent from authorized project representatives.
SHEET
MECH DETAILS & SCHEDULES
SHEET NUMBER

M3.1



EXISTING CONDITIONS SHOWN ARE FROM PREVIOUS DRAWINGS. MECHANICAL CONTRACTOR SHALL FIELD VERIFY EXACT LOCATIONS OF ALL DUCT AND DIFFUSERS. IF MAJOR DIFFERENCES OCCUR IN FIELD, CONTACT CHICK-FIL-A CONSTRUCTION MANAGER.

DEMOLITION NOTES

- ① CONTRACTOR IS RESPONSIBLE FOR OBTAINING ALL NECESSARY PERMITS AND PAYING ALL APPLICABLE FEES.
- ② DISPOSAL OF EQUIPMENT AND MATERIALS REQUIRED TO BE REMOVED SHALL BE THE RESPONSIBILITY OF THE CONTRACTOR PERFORMING THE WORK.
- ③ DE-ENERGIZE ALL ELECTRICAL CIRCUITS RELATED TO EQUIPMENT THAT WILL BE MOVED OR REMOVED PRIOR TO STARTING WORK. DE-ENERGIZED CIRCUITS SHALL BE PROTECTED WITH LOCKING DEVICES USING APPROPRIATE WARNING LABELS.
- ④ MECHANICAL CONTRACTOR SHALL BE RESPONSIBLE FOR PATCHING ROOF AFTER REMOVAL OF EXISTING MECHANICAL EQUIPMENT. SEE ARCHITECTURAL DRAWINGS FOR ROOF PATCHING REQUIREMENTS.
- ⑤ EXCEPT WHERE NOTED, EXISTING REMOTE TEMPERATURE &/OR HUMIDITY SENSORS TO REMAIN. IF DURING RENOVATION PURPOSES CONTROLS SHALL BE TAKEN DOWN, MECHANICAL CONTRACTOR SHALL BE RESPONSIBLE FOR REINSTALLING AND TO PROVIDE ANY ADDITIONAL WIRING NEEDED. VERIFY EXISTING UNIT CONTROLS ARE IN GOOD WORKING ORDER. IF NOT, CONTACT CHICK-FIL-A CONSTRUCTION MANAGER.
- ⑥ MECHANICAL CONTRACTOR SHALL REPLACE FILTERS FOR ALL RTUS AT END OF PROJECT AND PRIOR TO REOPENING. MC TO PROVIDE PROPOSAL TO FACILITIES MANAGER, CONSTRUCTION MANAGER, AND OPERATOR TO CORRECT EXISTING RTU PUNCH ITEMS IDENTIFIED BY HALTON.
- ⑦ CONTRACTOR SHALL INDICATE SALVAGE VALUE IN BID FOR ROOFTOP UNITS BEING REPLACED.

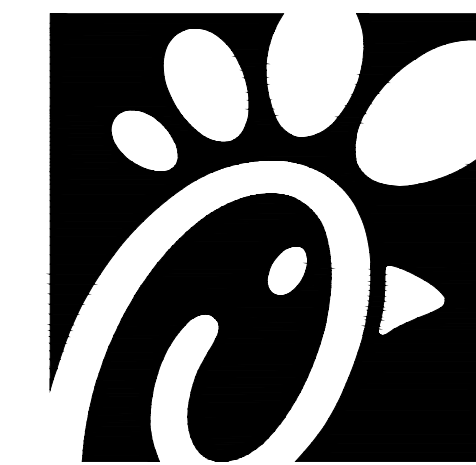
MECHANICAL DEMOLITION FLOOR PLAN

SCALE: 1/4"=1'-0"

| DEMOLITION LEGEND | |
|-------------------|--|
| | EXISTING EQUIPMENT, DUCT, AIR DEVICE ETC. TO REMAIN INTACT |
| | EQUIPMENT, DUCT, AIR DEVICE ETC. TO BE DEMOLISHED |

DEMOLITION KEY NOTES

- ① DETACH AND DEMOLISH EXISTING AIR DEVICE. SECURE DUCT ABOVE CEILING GRID FOR RE-CONNECTION. SEE SHEET M.II FOR NEW CONNECTION.
- ② DEMOLISH EXISTING HOOD, ALL ASSOCIATED GREASE DUCT, CAPTURE JET FAN AND DIFFUSER (IF EXISTING), EXHAUST FAN, AND ITS ASSOCIATED ROOF CURB. PATCH AND REPAIR ROOF TO MATCH SURROUNDING CONSTRUCTION.
- ③ DEMOLISH EXISTING KITCHEN A/C UNIT, UNIT CONTROLS (REMOTE TEMP SENSOR, REMOTE HUMIDITY SENSOR, TSTAT, REMOTE SMOKE DETECTOR TEST/RESET STATION, ETC.), SUPPLY/RETURN AIR DROPS, ALL ASSOCIATED SUPPLY/RETURN DUCT & AIR DEVICES (UNLESS NOTED OTHERWISE). COVER ROOF CURB WEATHER-TIGHT FOR RE-USE. SEE SHEET M.II.
- ④ EXISTING REMOTE TEMPERATURE AND/OR REMOTE HUMIDITY SENSORS TO BE REPLACED WITH NEW. DEMOLISH ALL ASSOCIATED CONTROL WIRING. SEE SHEET M.II FOR FURTHER INFORMATION.
- ⑤ EXISTING RTU TO BE REPLACED WITH NEW AS SCHEDULED ON SHEET M3.I. UNLESS NOTED OTHERWISE, DEMOLISH ALL EXISTING UNIT CONTROLS (REMOTE TEMP SENSOR, REMOTE HUMIDITY SENSOR, TSTAT, REMOTE SMOKE DETECTOR ANNUNCIATOR, ETC.). EXISTING ROOF CURB AND SUPPLY & RETURN DUCT TO REMAIN. COVER CURB WEATHER-TIGHT FOR RE-USE. GC BID ALTERNATE MATERIALS AND LABOR TO BE BILLED UNDER SEPARATE CONTRACT AND COORDINATED VIA WORK ORDER WITH FEQ SPECIALIST.
- ⑥ DEMOLISH EXISTING AIR DEVICE AND ASSOCIATED BRANCH DUCT. SEAL PLENUM AIR-TIGHT.



Chick-fil-A

Chick-fil-A
5200 Buffington Road
Atlanta, Georgia 30349



Kurzynske & Associates
CONSULTING ENGINEERS
2705 Lebanon Pike - Suite One
Nashville, Tennessee 37214
Telephone: (615) 255-8203



CHICK-FIL-A
ERIE
7160 PEACH TREE
ERIE, PA 16509

FSR#01879

BUILDING TYPE / SIZE: S06C
RELEASE: v05.22

REVISION SCHEDULE

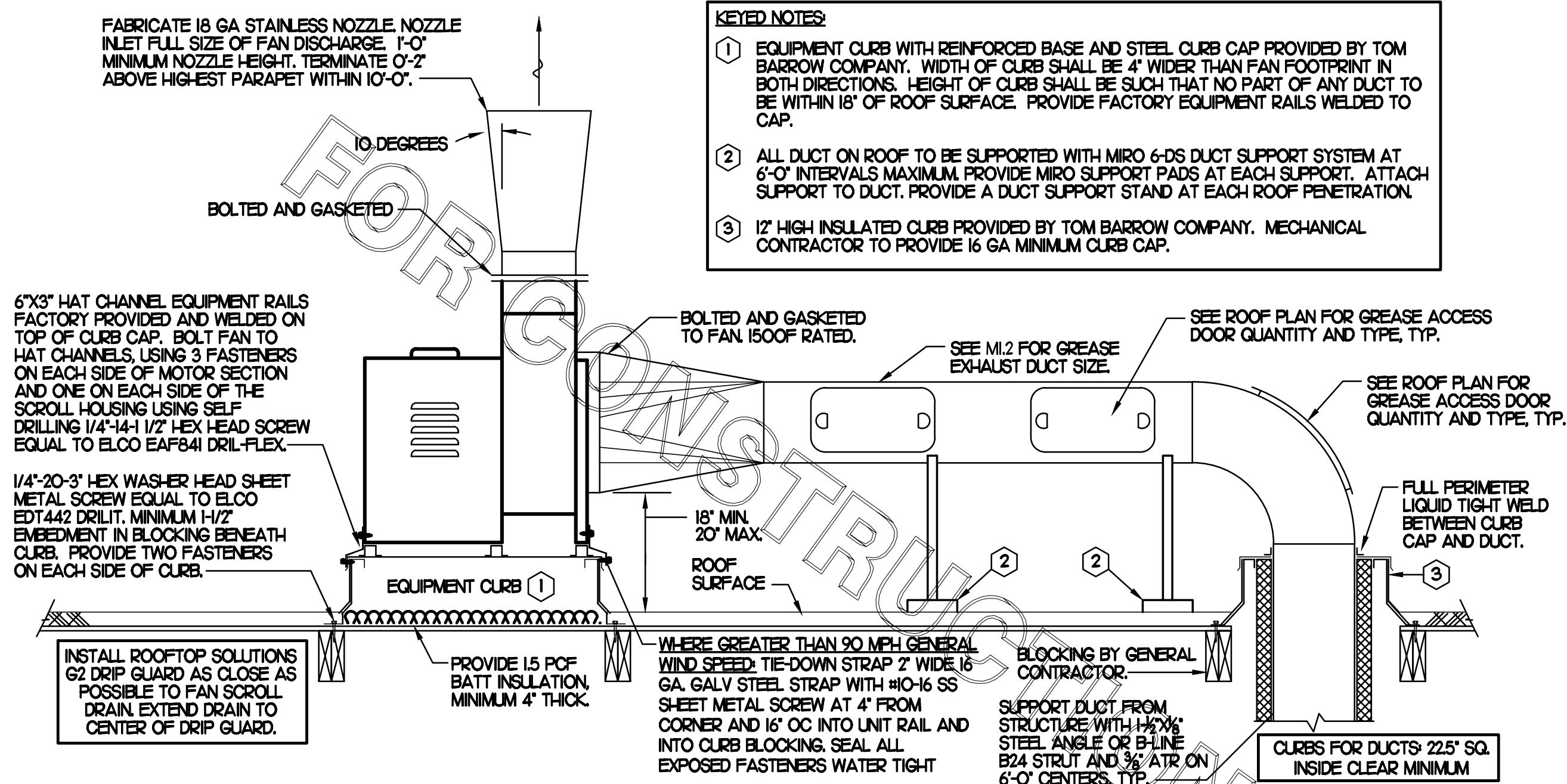
| NO. | DATE | DESCRIPTION |
|-----|------|-------------|
| | | |

CONSULTANT PROJECT # 22115.HF.R
PRINTED FOR CONSTRUCTION
DATE 01/11/2023
DRAWN BY DSF

Information contained on this drawing and in all digital files produced for above named project may not be reproduced in any manner without express written or verbal consent from authorized project representatives.

SHEET
MECHANICAL
DEMO PLAN
SHEET NUMBER

M0.1



- KEYED NOTES:**
- EQUIPMENT CURB WITH REINFORCED BASE AND STEEL CURB CAP PROVIDED BY TOM BARROW COMPANY. WIDTH OF CURB SHALL BE 4" WIDER THAN FAN FOOTPRINT IN BOTH DIRECTIONS. HEIGHT OF CURB SHALL BE SUCH THAT NO PART OF ANY DUCT TO BE WITHIN 18" OF ROOF SURFACE. PROVIDE FACTORY EQUIPMENT RAILS WELDED TO CAP.
 - ALL DUCT ON ROOF TO BE SUPPORTED WITH MIRO 6-DS DUCT SUPPORT SYSTEM AT 6'-0" INTERVALS MAXIMUM. PROVIDE MIRO SUPPORT PADS AT EACH SUPPORT. ATTACH SUPPORT TO DUCT. PROVIDE A DUCT SUPPORT STAND AT EACH ROOF PENETRATION.
 - 12" HIGH INSULATED CURB PROVIDED BY TOM BARROW COMPANY. MECHANICAL CONTRACTOR TO PROVIDE 16 GA MINIMUM CURB CAP.

SHEET NOTES

- ALL DUCTWORK AND UNFINISHED METAL ON ROOF EXCEPT STAINLESS SHALL BE PREPARED WITH TWO COATS OF SHERWIN WILLIAMS B66-200 SERIES DTM WHITE ACRYLIC SEMI-GLOSS INDUSTRIAL MAINTENANCE COATING. DEGREE AND PRIME BARE METAL SURFACE WITH ONE COAT OF SHERWIN WILLIAMS DTM PRIMER PRIOR TO PAINTING.
- AT EACH PIECE OF ROOF EQUIPMENT, PROVIDE A PLASTIC ENGRAVED LABEL WITH 1" HIGH WHITE LETTERS ON A BLACK BACKGROUND. THE LABEL IS TO HAVE A SELF-ADHESIVE BACKING.
- MAINTAIN 18" CLEARANCE FROM GREASE EXHAUST DUCTWORK ABOVE ROOF TO ANY COMBUSTIBLE CONSTRUCTION INCLUDING PARAPET WALLS.

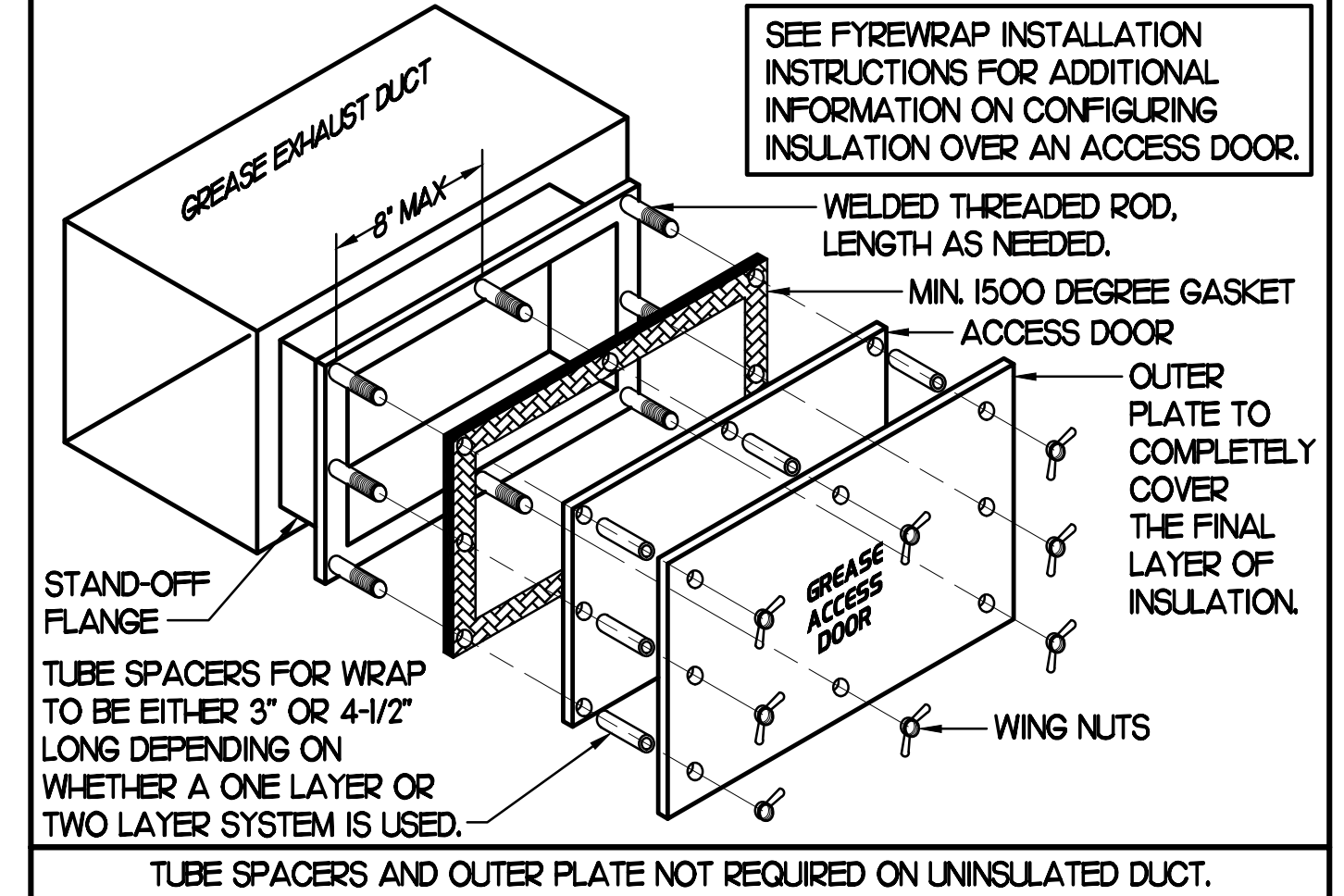
KEY NOTES

- FABRICATE DISCHARGE AIR NOZZLE. LOCATE EXHAUST TERMINATION A MINIMUM 10'-0" FROM OUTSIDE AIR INTAKES. SEE DETAIL 2 THIS SHEET.
- GREASE EXHAUST DUCT LOCATED ON ROOF SHALL SLOPE 1/4" PER FOOT TOWARDS THE HOOD, THE FAN, OR A COMBINATION OF THE TWO SUCH THAT NO PORTION OF THE RADIUS ELBOW AT THE CURB IS BELOW THE CURB CAP AND SUCH THAT THE FAN BASE SETS DIRECTLY ON THE CURB RAILS. THE BOTTOM OF THE RADIUS ELBOW MAY BE EVEN FLUSH WITH THE CURB CAP, BUT NOT BELOW THE CAP. THE DUCT AT THE FAN MUST BE CENTERED ON THE FAN INLET. THE MC MAY ADD A VERTICAL RISER AT THE RADIUS ELBOW LOCATED AT THE DUCT CURB AS NEEDED IN ORDER TO CENTER THE DUCT ON THE FAN INLET.

GREASE ACCESS DOOR SCHEDULE

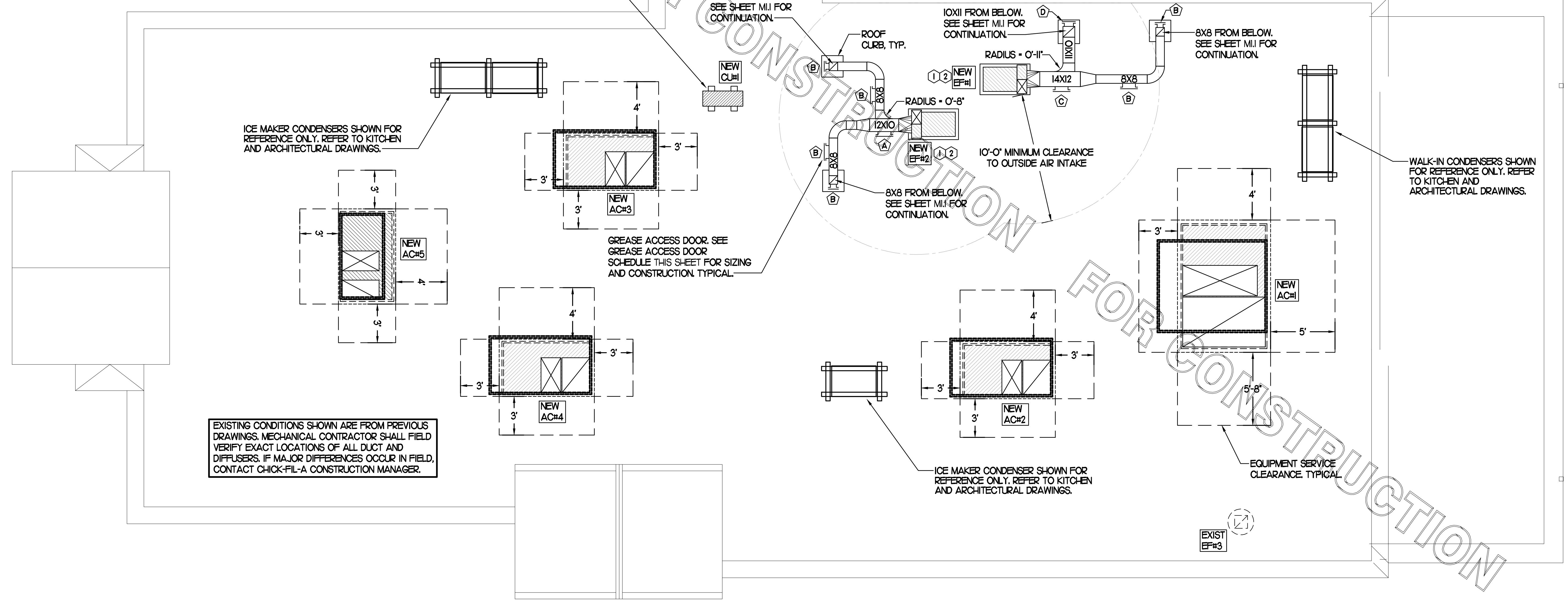
| MARK | OPENING SIZE | DOOR SIZE | REMARKS |
|------|--------------|-------------|---------|
| A | 7.5H X 14W | 9.5H X 16W | 1 |
| B | 5.5H X 14W | 7.5H X 16W | 1 |
| C | 9.5H X 14W | 11.5H X 16W | 1 |
| D | 8.5H X 14W | 10.5H X 16W | 1 |

1. ACCESS DOORS SHALL BE U.L. 1978 LISTED OR FIELD FABRICATED. REQUIRE NO TOOLS FOR REMOVAL AND MEET THE REQUIREMENTS OF THE CURRENT EDITION OF THE IMC. ACCESS DOOR ASSEMBLY SHALL BE WELDED IN PLACE TO THE GREASE EXHAUST DUCT AND THE ACCESS DOOR SHALL BE SECURED WITH TUMB SCREWS. ACCESS DOORS SHALL BE SEALED WITH A MINIMUM 1500 DEGREE GASKET MATERIAL EQUIVALENT TO THAT MANUFACTURED BY BRETON INDUSTRIES, INC (800) 382-2491.

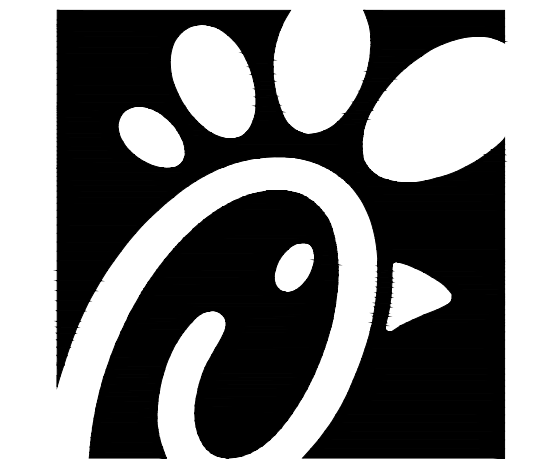


2 KITCHEN HOOD EXHAUST FAN - UTILITY SET FAN
NO SCALE

SET CONDENSING UNIT ON ROOF USING TWO CURBS PLUS CPES-1 EQUIPMENT. CURBS SECURE CONDENSING UNIT TO CURBS ARRANGED IN PARALLEL. SET LONG SIDE OF CURB PARALLEL TO ROOF SLOPE. FLASH INTO ROOF BY GC. COORDINATE EXACT LOCATION WITH STRUCTURAL DRAWINGS. ALL MAINTENANCE CLEARANCES OF NEW AND EXISTING EQUIPMENT SHALL BE MAINTAINED.



1 MECHANICAL ROOF PLAN
SCALE: 1/4"=1'-0"



Chick-fil-A

Chick-fil-A
5200 Buffington Road
Atlanta, Georgia 30349



Kurzynske & Associates
CONSULTING ENGINEERS
2705 Lebanon Pike - Suite One
Nashville, Tennessee 37214
Telephone: (615) 255-5203



CHICK-FIL-A
ERIE
7160 PEACH TREE
ERIE, PA 16509

FSR#01879

BUILDING TYPE / SIZE: S06C
RELEASE: v05.22

REVISION SCHEDULE

| NO. | DATE | DESCRIPTION |
|-----|------|-------------|
| | | |

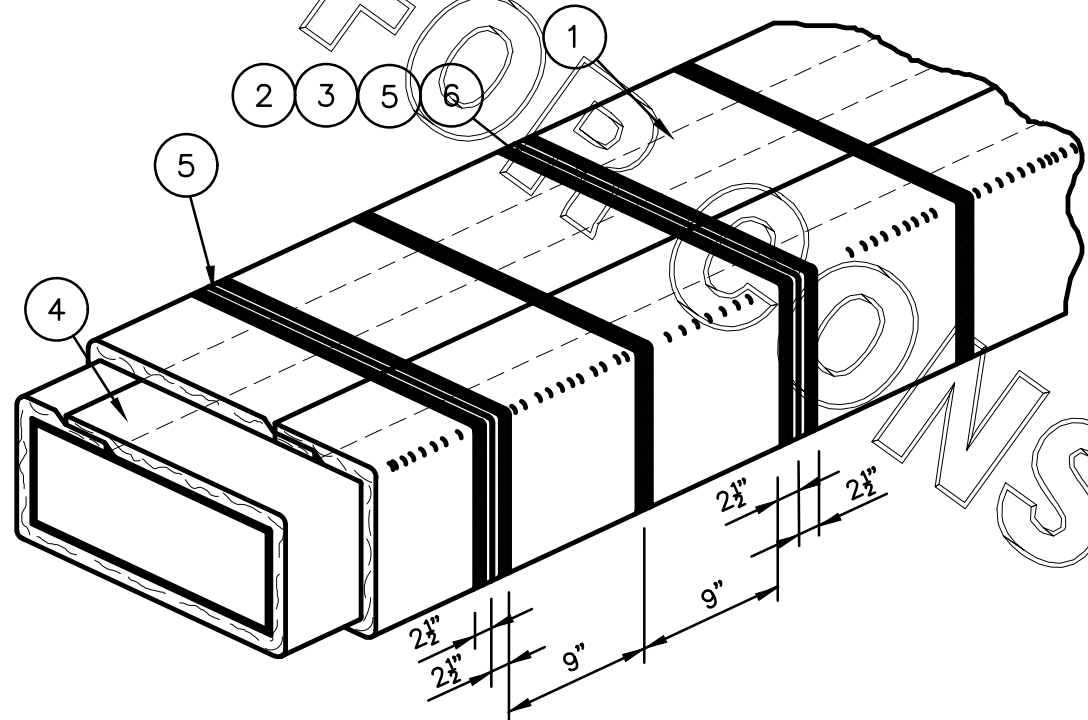
CONSULTANT PROJECT # 22115.HF.R
PRINTED FOR CONSTRUCTION
DATE 01/11/2023
DRAWN BY DSF

Information contained on this drawing and in all digital files produced for above named project may not be reproduced in any manner without express written or verbal consent from authorized project representatives.
SHEET
MECHANICAL
ROOF PLAN
SHEET NUMBER

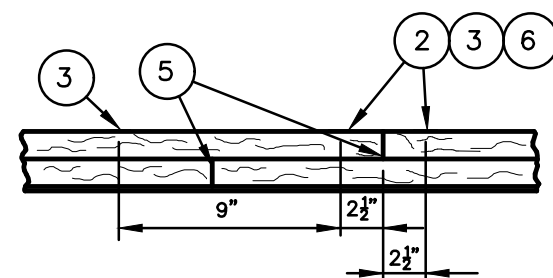
M1.2

CONSTRUCTION

FyreWrap® Elite™ 1.5 Duct Insulation
 Commercial Kitchen Grease Duct System
 ASTM E 2336/ICCES AC101 System
 1 and 2 Hour Fire-Rated Enclosure, Shaft Alternative
 Zero Clearance to Combustibles
 Intertek Design No. UNI/BI 120-02
 Butt Joint System (Both Layers, Max. 24"x24" Duct)



INSTALLATION METHOD:



Butt-Joint
Adjacent Blanket Pieces

LEGEND:

- 1 FyreWrap Elite 1.5 Duct Insulation, Two Layers (Each 1/2" Total Thickness - 3")
- 2 Filament Tape (Temporary Hold)
- 3 1/2" Carbon or SS Banding Straps (Permanent Hold)
- 4 3" Minimum Longitudinal Overlap
- 5 Compressed Butt Joint
- 6 3" Wide Aluminum Foil Tape at 90 Degree Transverse Butt Joints

| Revision | Comments |
|----------|----------|
| | |
| | |
| | |
| | |

SUBJECT: _____
 LOCATION: _____
 BLDG. NO.: _____ DATE: 04-05-2018 DRAWING NO.: FP-693
 DRAWN: S.A.RUSTAY APPROVAL: _____ PROJECT NO.: _____
 SCALE: N.T.S.

KITCHEN HOOD SYSTEMS NOTES

- CHICK-FIL-A MAINTAINS A NATIONAL ACCOUNT WITH HALTON CO. FOR THE HOODS. CHICK-FIL-A WILL PURCHASE AND PROVIDE THE HOODS FOR INSTALLATION BY THE MECHANICAL CONTRACTOR. THE MECHANICAL CONTRACTOR SHALL BE RESPONSIBLE FOR RECEIVING THE HOODS. CONTACT HALTON CO. AT 270-237-5600 FOR MORE INFO.
- THE FIRE SUPPRESSION SYSTEM SHALL CONSIST OF A COMPLETE WET ANSUL SYSTEM FURNISHED BY HALTON. THE HOOD SHALL BE FURNISHED PRE-PIPED BY HALTON.
- THE R-102 ANSUL FIRE SUPPRESSION SYSTEM EXTERNAL TO THE HOODS SHALL BE INSTALLED IN ACCORDANCE WITH HOOD MANUFACTURER'S SHOP DRAWINGS BY AN AUTHORIZED ANSUL SYSTEM INSTALLER SELECTED AND HIRED BY HALTON. COST FOR ANSUL INSTALLATION INCLUDED IN PRICE OF HOODS TO CFA.
- HOOD EXHAUST DUCTWORK SHALL BE 16 GA. BLACK STEEL WITH CONTINUOUS LIQUID TIGHT WELD OF JOINTS & SEAMS.
- TURNS IN GREASE EXHAUST DUCTWORK SHALL BE LONG RADIUS TYPE, WITH A CENTERLINE RADIUS R=3W/2, NO EXCEPTIONS ALLOWED. NO MITERED FITTINGS ALLOWED.
- ALL STAINLESS STEEL CLOSURE PANELS SHALL BE SUPPLIED BY HOOD MANUFACTURER AND INSTALLED BY THE MECHANICAL CONTRACTOR ACCORDING TO MANUFACTURER'S RECOMMENDATIONS.
- SLOPE ALL GREASE EXHAUST DUCT BACK TO HOOD AT 1/4" PER FOOT OF RUN.
- WRAP NEW GREASE DUCT WITH UNIFRAX FyreWRAP. INSULATION ON ACCESS DOORS SHALL BE INSTALLED ACCORDING TO MANUFACTURER'S INSTALLATION RECOMMENDATIONS. UNIFRAX FyreWRAP PRODUCT USED SHALL MEET LOCAL CODE REQUIREMENTS.
- SUPPORT HOODS WITH THREADED ROD AT EACH FACTORY SUPPORT POINT. EACH SUPPORT POINT MUST SUPPORT THE HOOD WEIGHT EQUALLY. ATTACH TO STRUCTURE AS DETAILED ON STRUCTURAL DRAWINGS. ATTACH HOOD TO WALL AT 16" INTERVALS ALONG FULL LENGTH OF HOOD ON TOP AND BOTTOM. ATTACHMENT TO WALL REQUIRES FIELD DRILLING OF SUPPORT ANGLE AT BACK OF HOODS. EACH WALL ATTACHMENT POINT MUST OCCUR AT A WALL STUD. ATTACHMENT HARDWARE TO BE #12-24 HEX HEAD SHEET METAL SCREW EQUAL TO TEXTRON SDS EDT265, LENGTH AS REQUIRED TO FULLY PENETRATE THE STUD.
- MECHANICAL CONTRACTOR TO PROVIDE AND INSTALL SUNCOAST H.E.S. SYSTEM FOR ALL HOODS. SEE HOOD FAN/EQUIPMENT INTERLOCK WIRING DIAGRAM ON SHEET M4.1 FOR MORE INFORMATION.

HOOD SCHEDULE

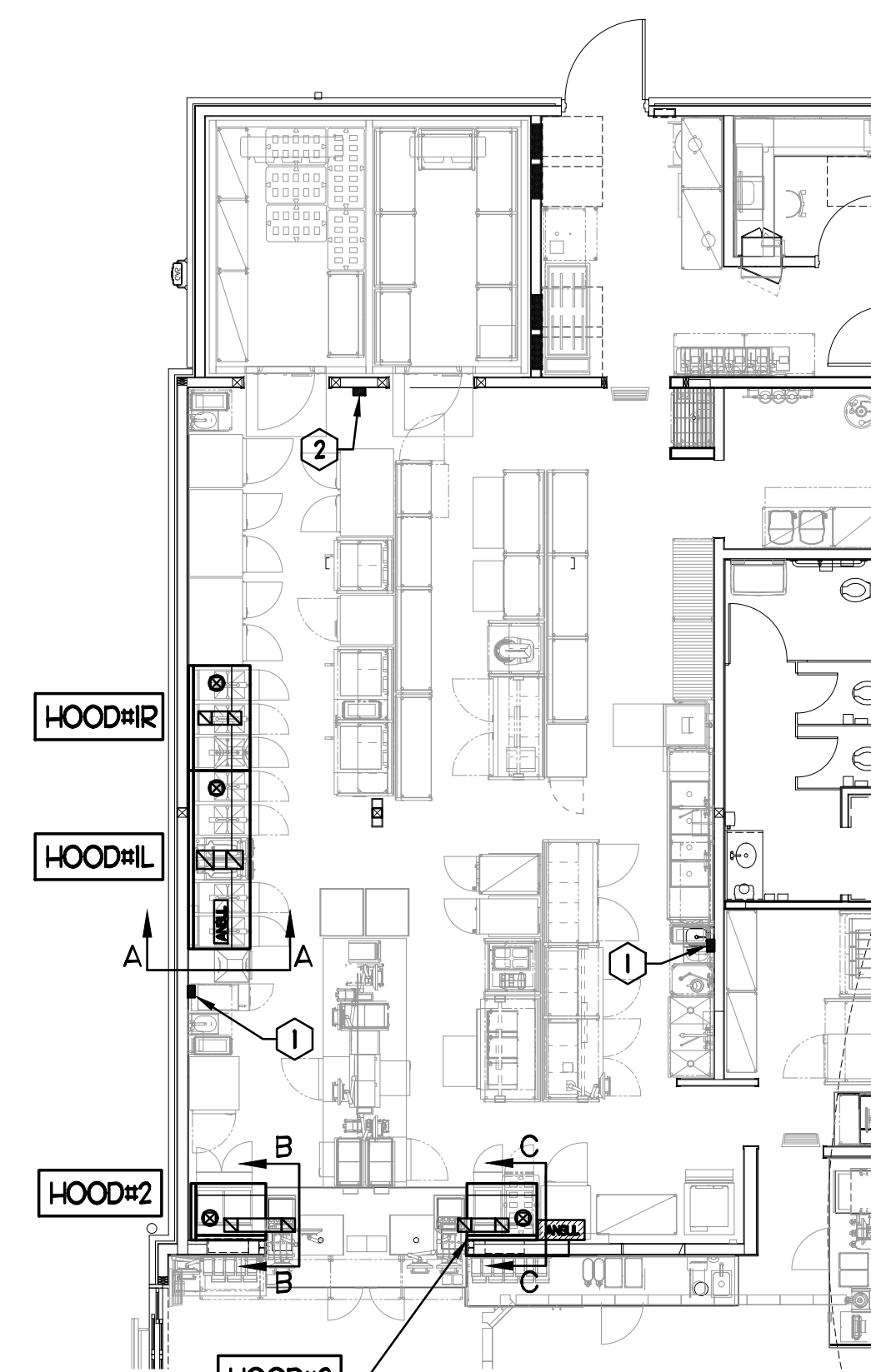
| MARK | EXHAUST CFM | SP • TAB PORT | CAPTURE JET CFM & SP. | TYPE | COLLAR SIZE | WIDTH | DEPTH | HEIGHT | MANUFACTURER | MODEL | REMARKS |
|---------|-------------|---------------|-----------------------|------------|-------------|-------|-------|--------|--------------|-------|---------|
| HOOD#HL | 1204 | 0.13" | 80 • 0.30" | BACK SHELF | 10"X11" | 10" | 37" | 38" | HALTON | KVL-2 | I |
| HOOD#R | 709 | 0.13" | 47 • 0.30" | BACK SHELF | 8"X8" | 63" | 37" | 38" | HALTON | KVL-2 | I |
| HOOD#2 | 701 | 0.30" | 30 • 0.29" | BACK SHELF | 8"X8" | 45" | 34" | 38" | HALTON | KVL-C | I |
| HOOD#3 | 701 | 0.30" | 30 • 0.29" | BACK SHELF | 8"X8" | 42" | 34" | 38" | HALTON | KVL-C | I |

NOTES: DIMENSIONS OF HOODS INCLUDE BACK AND SIDE SPACERS (HEIGHT DOES NOT INCLUDE CLOSURE PANELS).
 REMARKS: I. HOOD SHOP DRAWINGS ARE INCLUDED FOR REFERENCE ON SHEETS M-1.1. REFER TO SHOP DRAWINGS FOR HOOD OPTIONS AND CONSTRUCTION.

NOTE:
SEE ARCHITECTURAL PLANS
FOR HOOD LOCATIONS.

CLEANOUT DOOR NOTE:
DUCT WRAP SHALL BE APPLIED TO THE CLEANOUT DOOR PER THE WRAP MFR'S INSTALLATION INSTRUCTIONS, NO EXCEPTIONS. ALSO, THE CLEANOUT DOOR MUST BE REMOVABLE WITHOUT TOOLS AND MUST BE CLEARLY AND PERMANENTLY LABELED.

GREASE EXHAUST DUCT CLEARANCE NOTE:
CLEARANCES ABOVE CEILING ARE TIGHT. MECHANICAL CONTRACTOR TO FIELD VERIFY EXACT ROUTING AND CLEARANCES PRIOR TO FABRICATING GREASE EXHAUST DUCT.

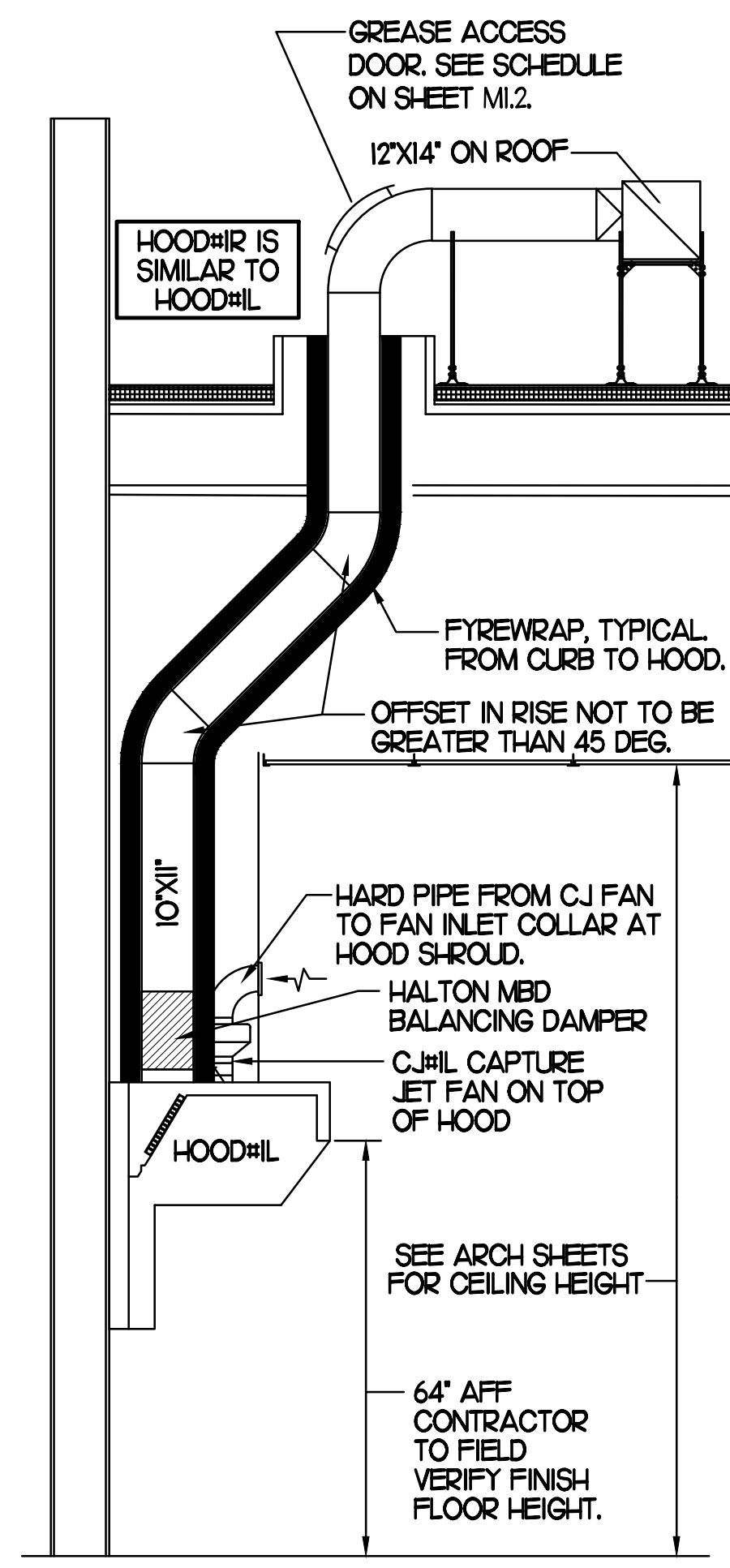


KEY NOTES

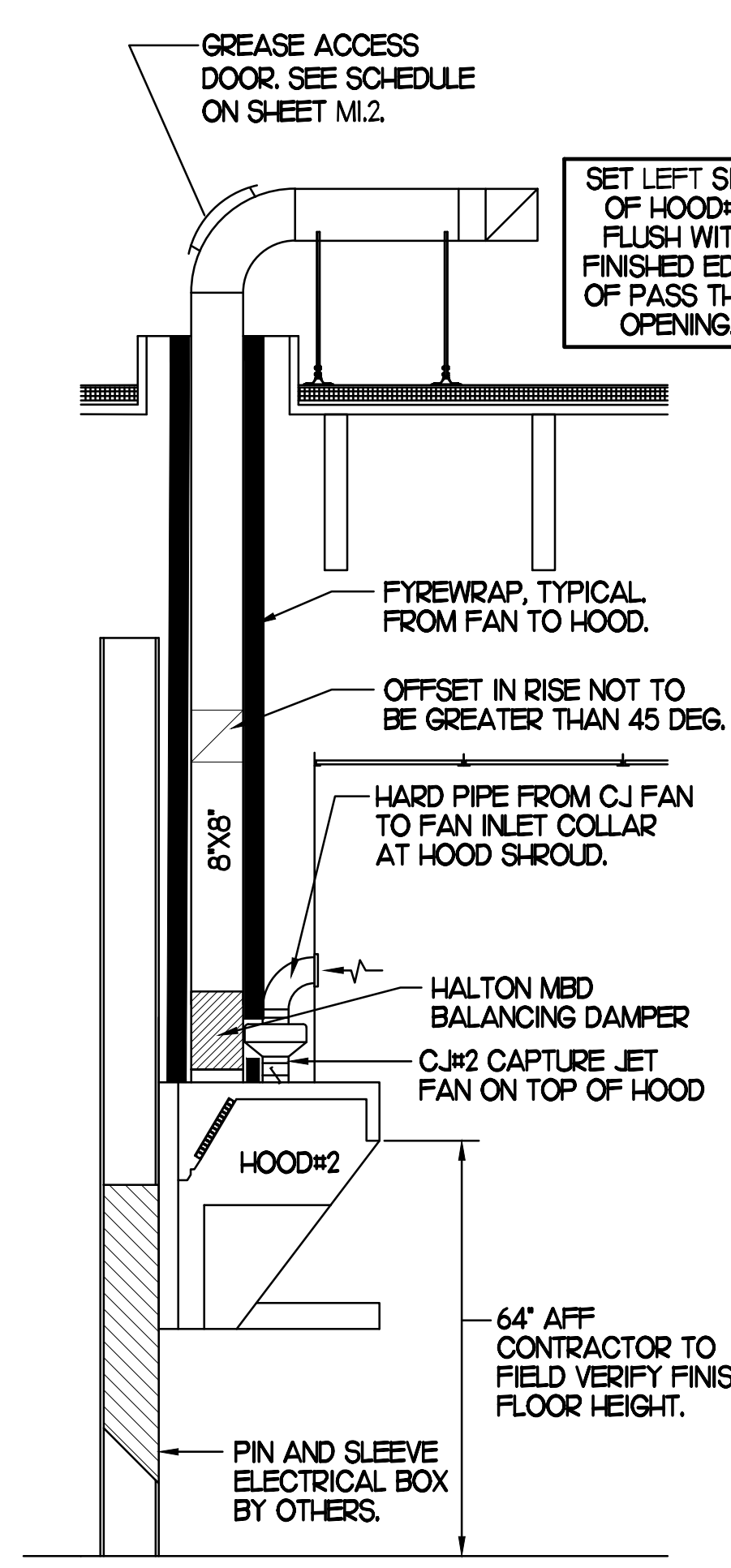
- ANSUL PULL STATIONS SERVING HOOD#2 AND HOOD#3. LOCATE ANSUL PULL STATION BETWEEN 42" AND 48" AFF. COORDINATE EXACT LOCATION WITH KITCHEN EQUIPMENT ELEVATIONS. J-BOX AND CONDUIT ARE BY ELECTRICAL. PROVIDE WHITE BAKELITE LABEL WITH 1/4" HIGH LETTERS INDICATING THE HOODS SERVED, IE: "PASS-THRU HOODS". BOTH PULL STATIONS SERVE THE SAME REMOTE MOUNTED ANSUL TANKS.
- ANSUL PULL STATION SERVING HOOD#HL AND HOOD#R. LOCATE ANSUL PULL STATION BETWEEN 42" AND 48" AFF. COORDINATE EXACT LOCATION WITH KITCHEN EQUIPMENT ELEVATIONS. J-BOX AND CONDUIT ARE BY ELECTRICAL. PROVIDE WHITE BAKELITE LABEL WITH 1/4" HIGH LETTERS INDICATING THE HOODS SERVED, IE: "MAIN COOKLINE HOODS".

HOOD LAYOUT

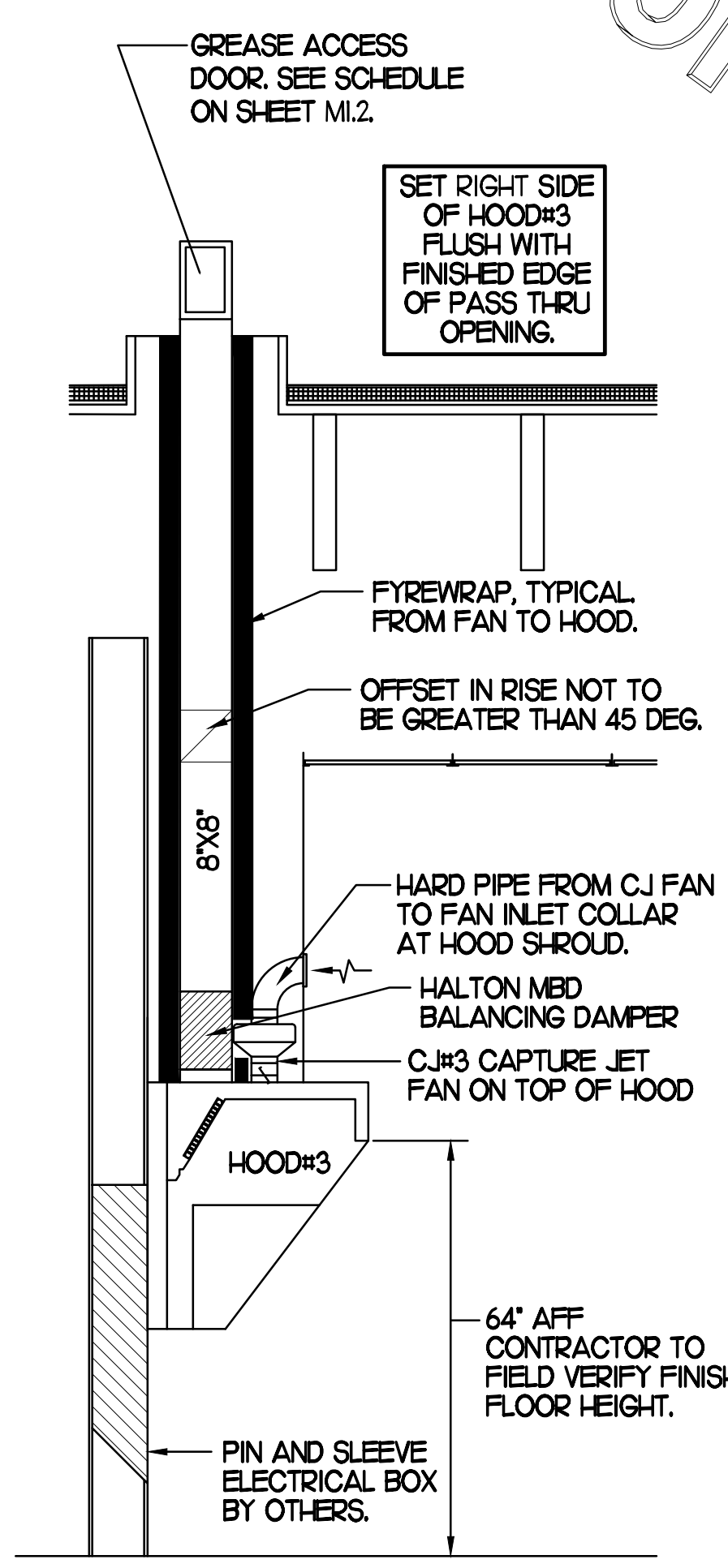
1/8"=1'-0"



SECTION "A-A"



SECTION "B-B"



SECTION "C-C"

HOOD ELEVATIONS

NONE



Chick-fil-A
 5200 Buffington Road
 Atlanta, Georgia 30349



Kurzynske
 & Associates
 CONSULTING ENGINEERS
 2705 Lebanon Pike - Suite One
 Nashville, Tennessee 37214
 Telephone: (615) 255-5203



CHICK-FIL-A
 ERIE
 7160 PEACH TREE
 ERIE, PA 16509

FSR#01879

BUILDING TYPE / SIZE: S06C
 RELEASE: v05.22

REVISION SCHEDULE

| NO. | DATE | DESCRIPTION |
|-----|------|-------------|
| | | |

CONSULTANT PROJECT # 22115.HF.R
 PRINTED FOR CONSTRUCTION
 DATE 01/11/2023
 DRAWN BY DSF

Information contained on this drawing and in all digital files produced for above named project may not be reproduced in any manner without express written or verbal consent from authorized project representatives.

SHEET
 HOOD DETAILS
 & SCHEDULES

SHEET NUMBER

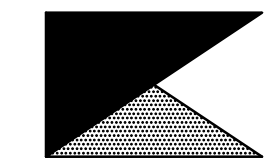
M2.1

CONSTRUCTION



Chick-fil-A

Chick-fil-A
5200 Buffington Road
Atlanta, Georgia 30349



Kurzynske
& Associates
CONSULTING ENGINEERS
2705 Lebanon Pike - Suite One
Nashville, Tennessee 37214
Telephone: (615) 255-5203



CHICK-FIL-A
ERIE
7160 PEACH TREE
ERIE, PA 16509

FSR#01879

BUILDING TYPE / SIZE: S06C
RELEASE: v05.22

REVISION SCHEDULE
NO. DATE DESCRIPTION

CONSULTANT PROJECT # 22115.HF.R
PRINTED FOR CONSTRUCTION
DATE 01/11/2023
DRAWN BY DSF

Information contained on this drawing and in all digital files produced for above named project may not be reproduced in any manner without express written or verbal consent from authorized project representatives.

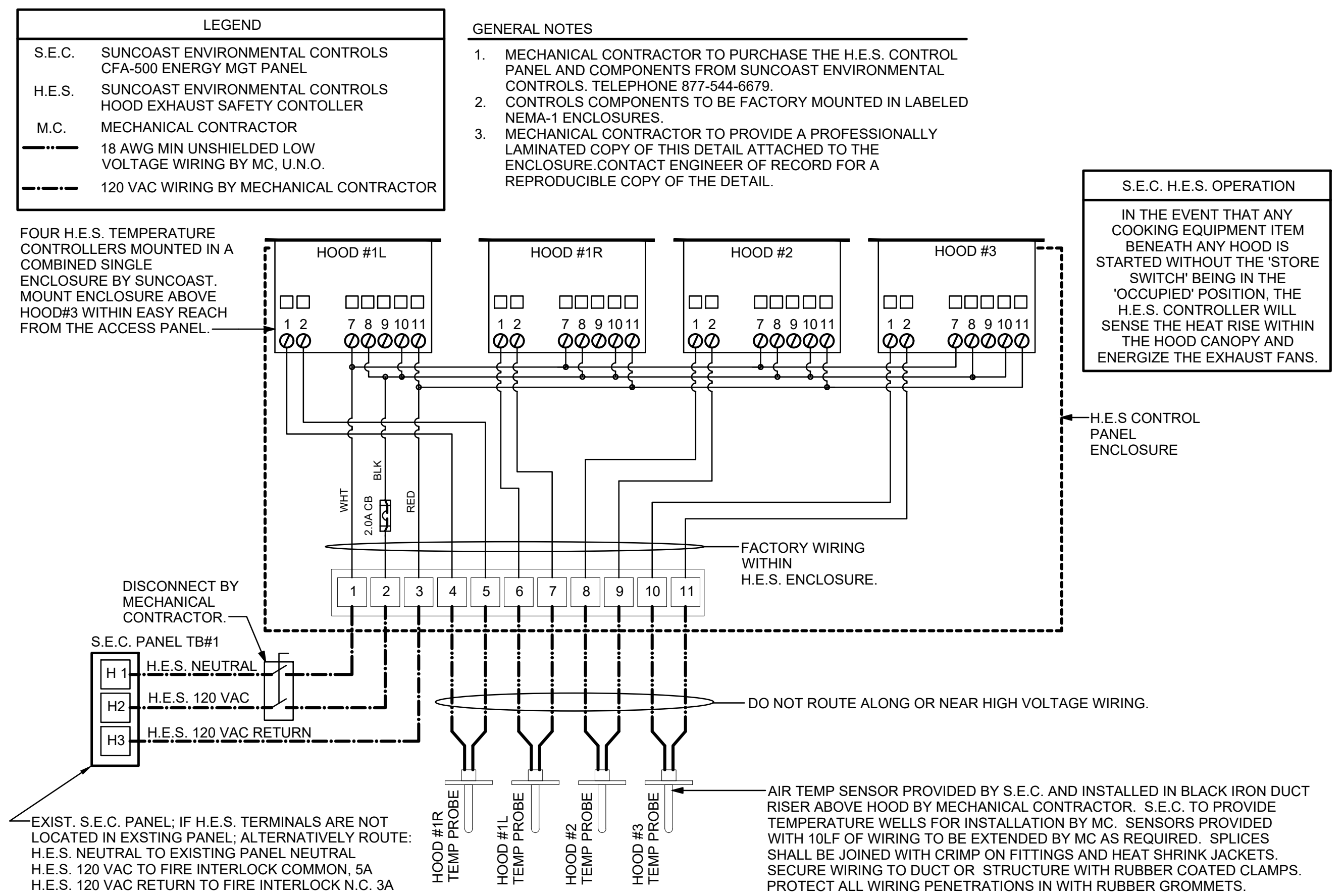
SHEET
HVAC CONTROLS

SHEET NUMBER

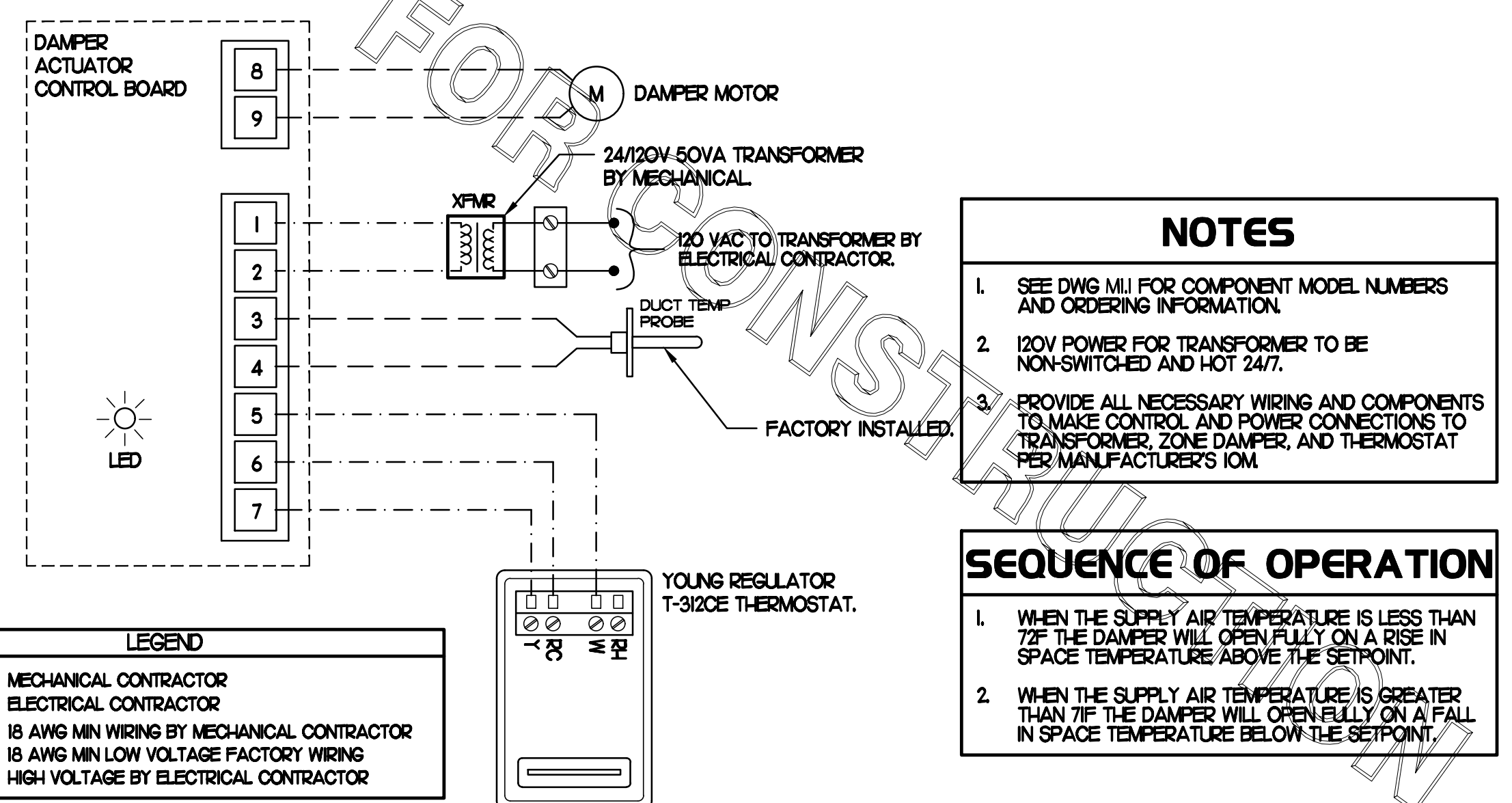
M4.1

FOR CONSTRUCTION

FOR CONSTRUCTION



1 HOOD EXHAUST SAFETY SWITCH (H.E.S.S.) WIRING DIAGRAM
NONE



2 OFFICE VAV DAMPER AND TSTAT
NO SCALE

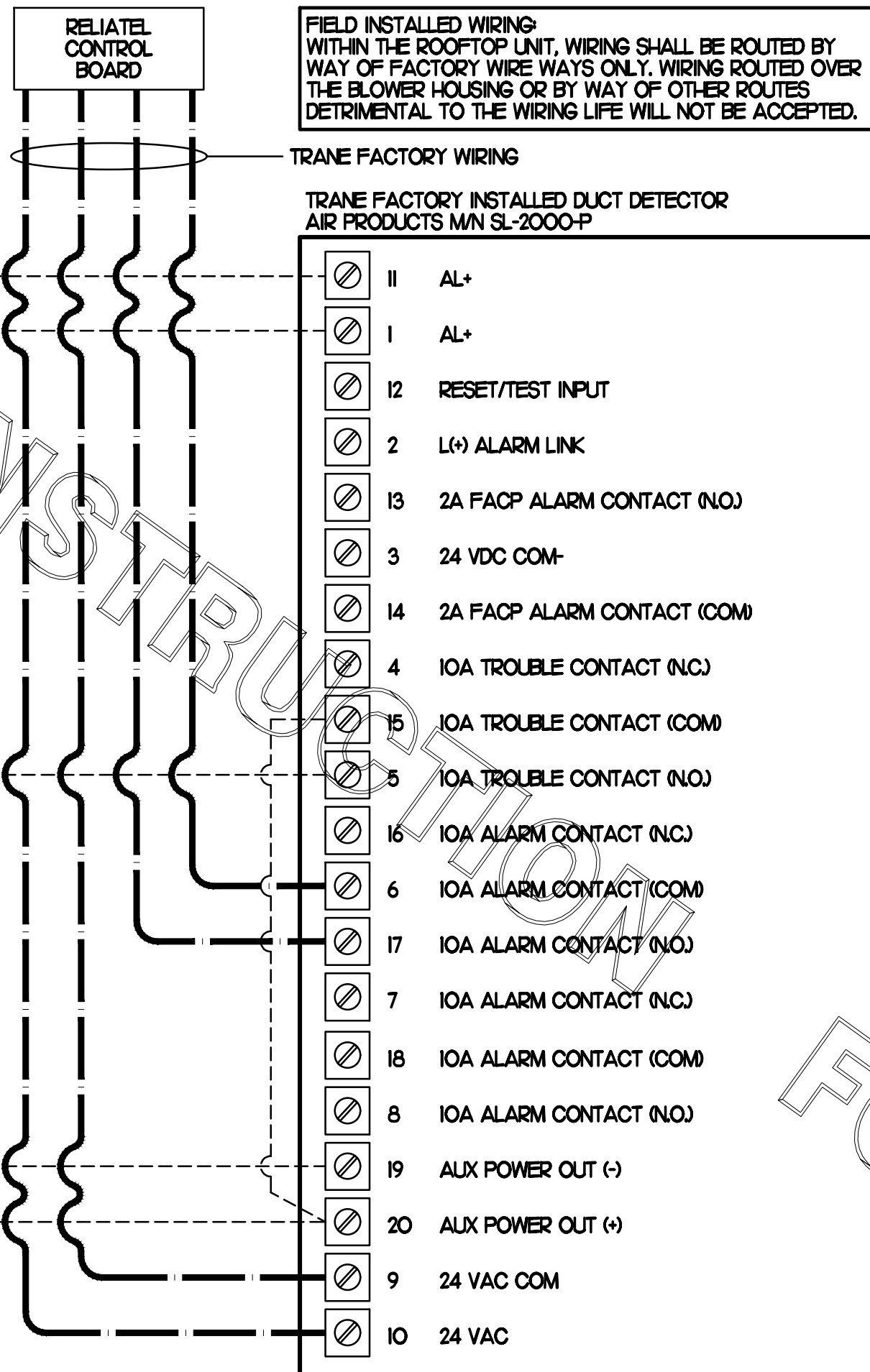
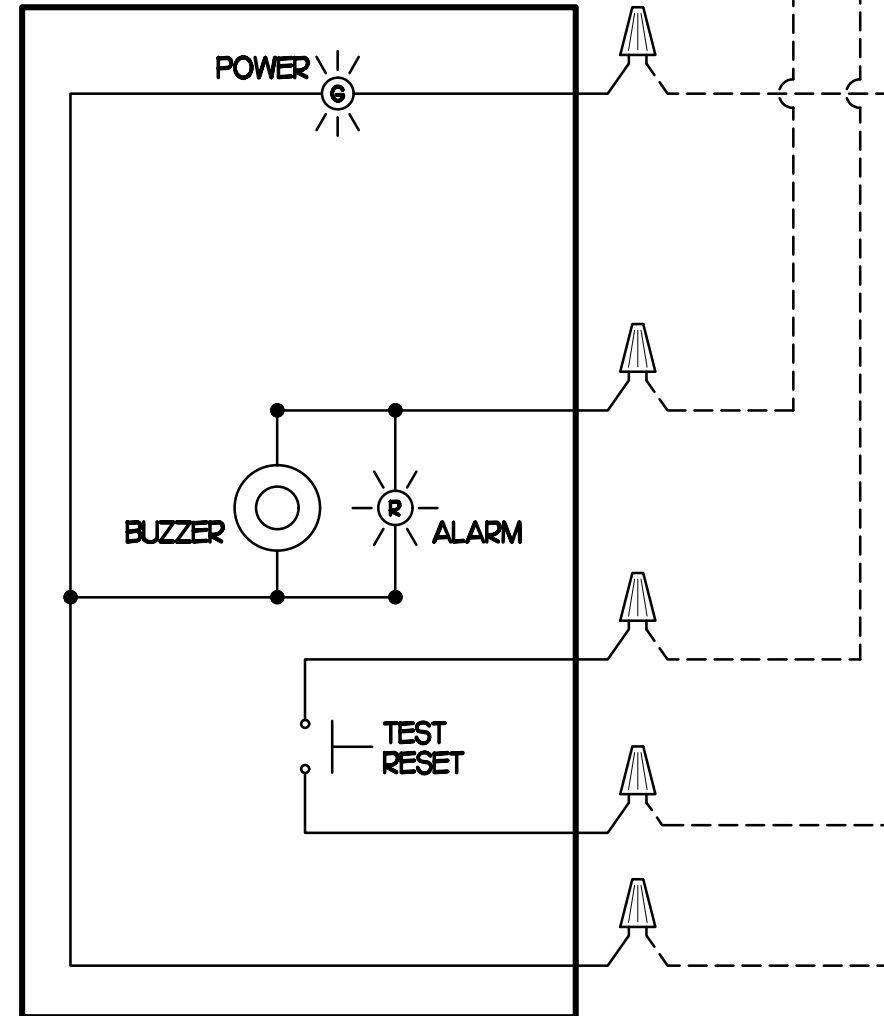
CONSTRUCTION

THERE WILL BE A SMOKE DETECTOR ANNUNCIATOR PROVIDED FOR THE RETURN SIDE DUCT DETECTOR. WHERE A SUPPLY SIDE DUCT DETECTOR IS SHOWN ON THE FLOOR PLAN AND/OR CALLED FOR ON THE RTU SCHEDULE, AN ADDITIONAL SMOKE DETECTOR ANNUNCIATOR WILL ALSO BE PROVIDED.

LEGEND
 - - - 18 AWG MIN WIRING BY MECH CONTRACTOR
 - - - FACTORY ANNUNCIATOR DETECTOR WIRING
 - - - FACTORY TRANE WIRING

LABELING
 PROVIDE ENGRAVED LABEL WITH 1" HIGH WHITE LETTERS ON BLACK BACKGROUND IDENTIFYING UNIT SERVED.

SUNCOAST CONTROLS ANNUNCIATOR



FIELD INSTALLED WIRING WITHIN THE ROOFTOP UNIT, WIRING SHALL BE ROUTED BY WAY OF FACTORY WIRE WAYS ONLY. WIRING ROUTED OVER THE BLOWER HOUSING OR BY WAY OF OTHER ROUTES DETRIMENTAL TO THE WIRING LIFE WILL NOT BE ACCEPTED.

TRANE FACTORY WIRING

TRANE FACTORY INSTALLED DUCT DETECTOR AIR PRODUCTS MN SL-2000-P

- 11 AL+
- 1 AL+
- 12 RESET/TEST INPUT
- 2 L(-) ALARM LINK
- 13 2A FACP ALARM CONTACT (NO)
- 3 24 VDC COM-
- 14 2A FACP ALARM CONTACT (COM)
- 4 IOA TROUBLE CONTACT (NC)
- 15 IOA TROUBLE CONTACT (COM)
- 5 IOA TROUBLE CONTACT (NO)
- 16 IOA ALARM CONTACT (NC)
- 6 IOA ALARM CONTACT (COM)
- 17 IOA ALARM CONTACT (NO)
- 7 IOA ALARM CONTACT (NC)
- 18 IOA ALARM CONTACT (COM)
- 8 IOA ALARM CONTACT (NO)
- 19 ALX POWER OUT (-)
- 20 ALX POWER OUT (+)
- 9 24 VAC COM
- 10 24 VAC

1 SMOKE DETECTOR AND ANNUNCIATOR WIRING DIAGRAM - TRANE

NO SCALE

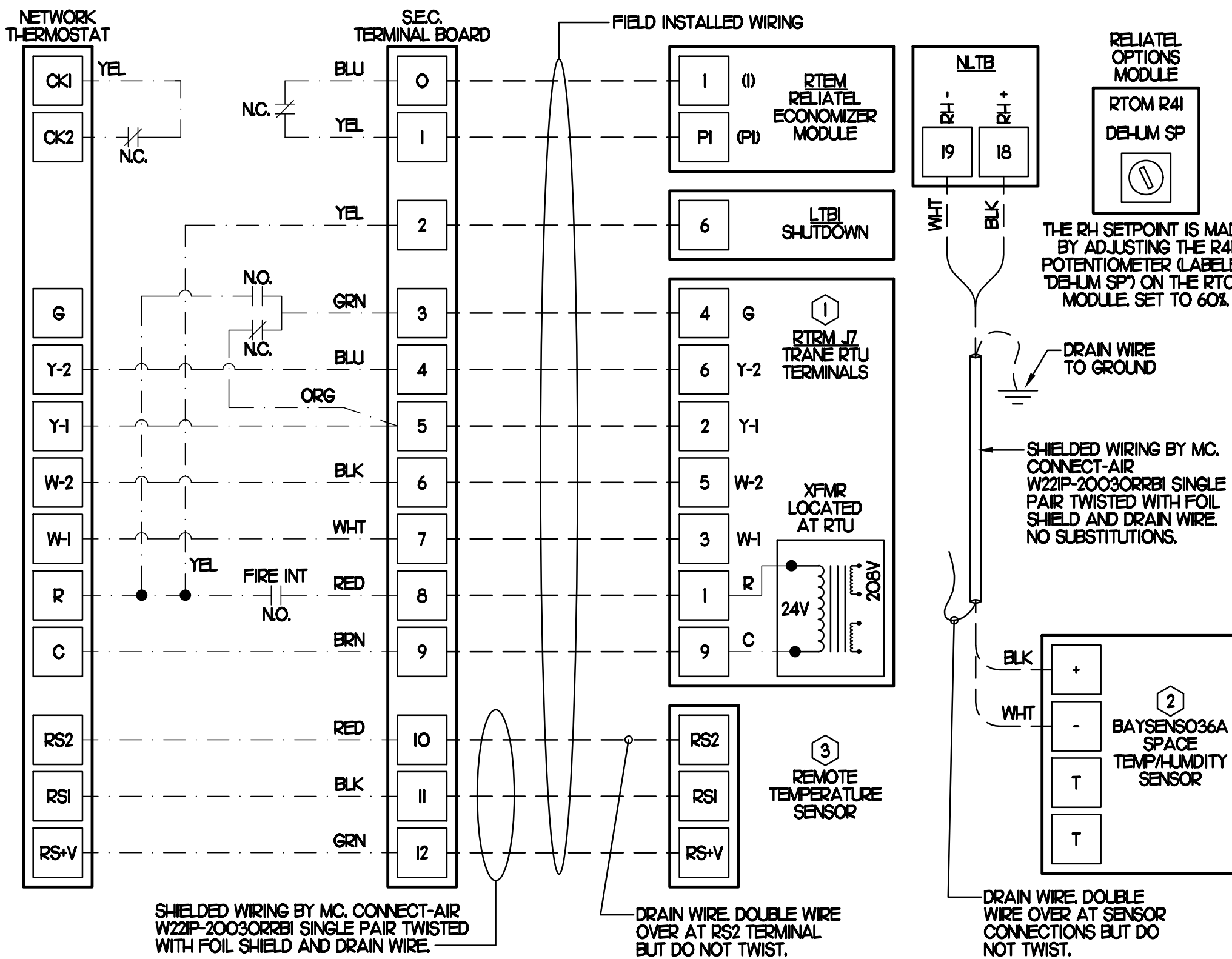
- NOTES**
- MECHANICAL CONTRACTOR SHALL MAKE PLASTIC LAMINATE OF THIS DETAIL AND INSTALL PERMANENTLY ON INSIDE DOOR OF ROOFTOP UNIT CONTROL COMPARTMENT.
 - SEE DETAILS THIS SHEET FOR SMOKE DETECTOR AND ANNUNCIATOR WIRING.
 - SET ALL THERMOSTATS FOR AUTO CHANGEOVER.
 - PROVIDE PLASTIC ENGRAVED LABEL AT ALL NEW SENSORS WITH 1/4" HIGH WHITE LETTERING ON BLACK BACKGROUND, IE "ACH2 HUMIDITY SENSOR" OR "ACH2 TEMP SENSOR". PLACE LABELS ON WALL ADJACENT TO DEVICE. DO NOT APPLY DIRECTLY TO DEVICE.

- KEYED NOTES**
- LOW VOLTAGE WIRING TO RTU TO BE ROUTED TO UNIT THRU FACTORY WIREWAY.
 - HOT GAS RE-HEAT UNITS ONLY: WIRING TO HUMIDITY SENSOR TO BE MADE WITH SHIELDED TWISTED PAIR AS SHOWN. TERMINATE SHIELD WIRES AT TB-1, LEAVE OPEN AT SENSOR.
 - NETWORK TSTAT REMOTE TEMP SENSOR PROVIDED BY SUNCOAST AND INSTALLED BY MC. SENSOR IS INTENDED TO BE SURFACE MOUNTED AND DOES NOT REQUIRE A SINGLE GANG BOX OR CONDUIT. FIELD CALIBRATE EACH SENSOR.

LEGEND
 SEC. SUNCOAST ENVIRONMENTAL CONTROLS (SUPPLIER OF TEMPIFAN CONTROL PANEL) LOCATED IN KITCHEN
 KEY NOTE REFERENCE
 MC MECHANICAL CONTRACTOR
 22 AWG MIN LOW VOLTAGE WIRING BY MC, LINO.
 LOW VOLTAGE WIRING BY SEC.

2 ROOFTOP UNIT CONTROL WIRING - TRANE

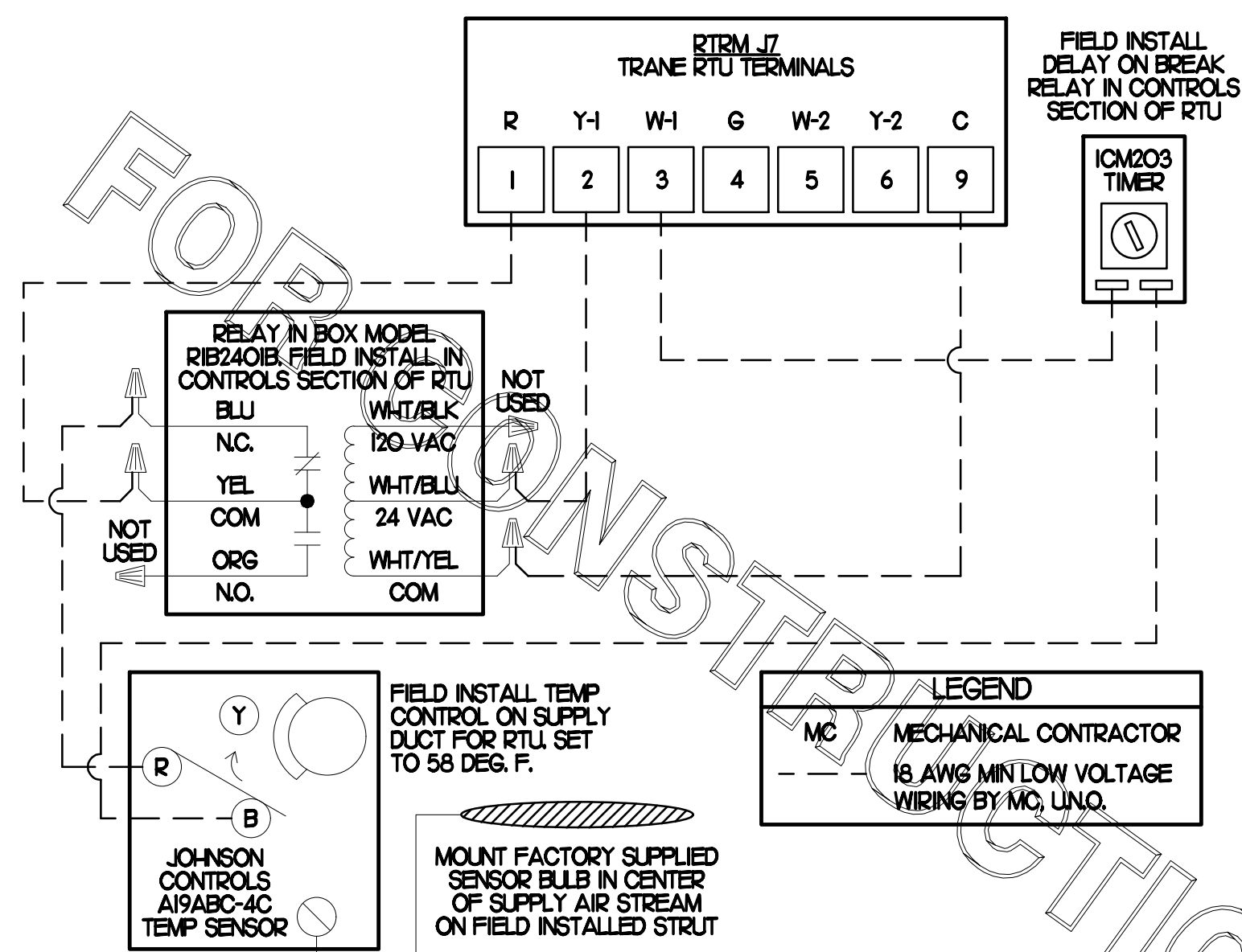
NONE



SHIELDED WIRING BY MC. CONNECT-AIR W22P-2003ORR81 SINGLE PAIR TWISTED WITH FOIL SHIELD AND DRAIN WIRE.

DRAIN WIRE, DOUBLE WIRE OVER AT RS2 TERMINAL BUT DO NOT TWIST.

DRAIN WIRE, DOUBLE WIRE OVER AT SENSOR CONNECTIONS BUT DO NOT TWIST.

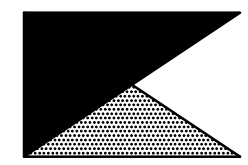


3 SUPPLY AIR TEMPERING WIRING - TRANE

NONE



Chick-fil-A
 5200 Buffington Road
 Atlanta, Georgia 30349



Kurzynske & Associates
 CONSULTING ENGINEERS
 2705 Lebanon Pike - Suite One
 Nashville, Tennessee 37214
 Telephone: (615) 255-5203



6-23-23

CHICK-FIL-A
ERIE
 7160 PEACH TREE
 ERIE, PA 16509

FSR#01879

BUILDING TYPE / SIZE: S06C
 RELEASE: v05.22

REVISION SCHEDULE

| NO. | DATE | DESCRIPTION |
|-----|------|-------------|
| | | |

CONSULTANT PROJECT # 22115.HF.R
 PRINTED FOR CONSTRUCTION
 DATE 01/11/2023
 DRAWN BY DSF

Information contained on this drawing and in all digital files produced for above named project may not be reproduced in any manner without express written or verbal consent from authorized project representatives.

SHEET HVAC CONTROLS

SHEET NUMBER

M4.2



Chick-fil-A
5200 Buffington Road
Atlanta, Georgia 30349



Kurzynske & Associates
CONSULTING ENGINEERS
2705 Lebanon Pike - Suite One
Nashville, Tennessee 37214
Telephone: (615) 255-5203



CHICK-FIL-A
ERIE
7160 PEACH TREE
ERIE, PA 16509

FSR#01879

BUILDING TYPE / SIZE: S06C
RELEASE: v05.22

REVISION SCHEDULE
NO. DATE DESCRIPTION

CONSULTANT PROJECT # 22115.HF.R
PRINTED FOR CONSTRUCTION
DATE 01/11/2023
DRAWN BY DSF

Information contained on this drawing and in all digital files produced for above named project may not be reproduced in any manner without express written or verbal consent from authorized project representatives.

SHEET
CANOPY HVAC
PLANS

SHEET NUMBER

M5.1

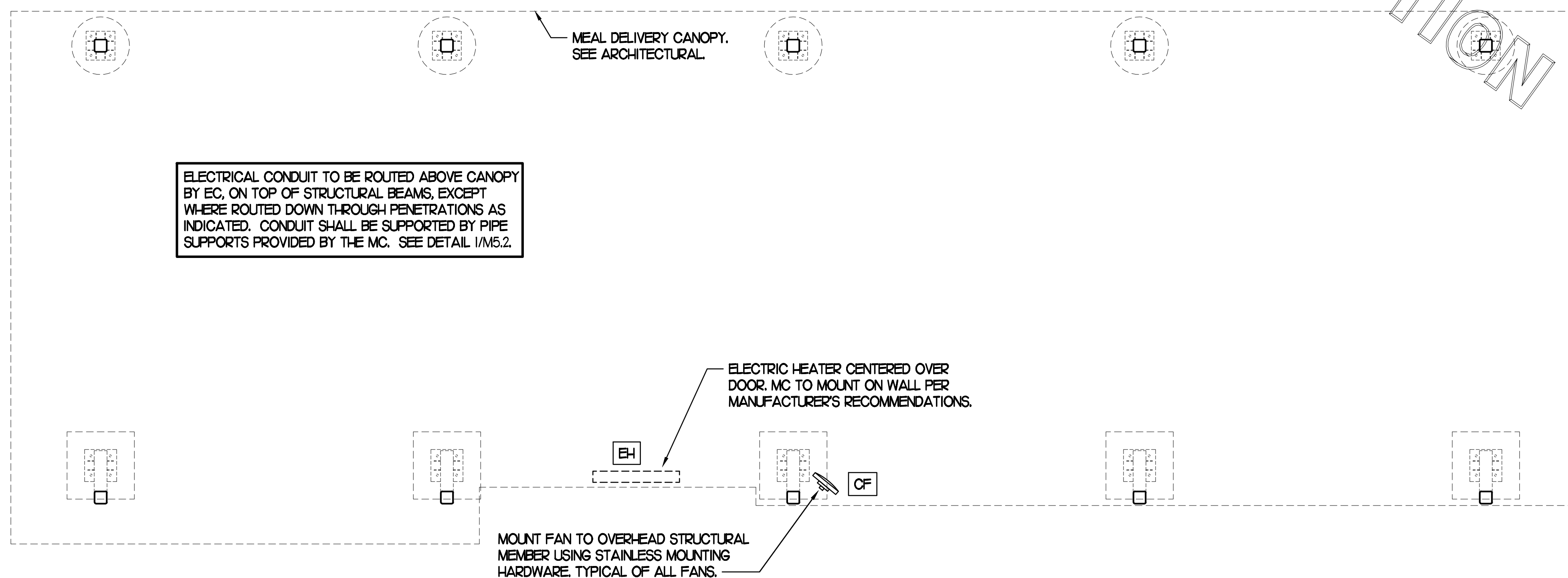
| LEGEND | | | |
|--------|-----------------------------|-----|---------------------------|
| CF# | CIRCULATING FAN # (TYP) | B/G | BELOW GRADE |
| GH# | GAS INFRARED HEATER # (TYP) | EC | ELECTRICAL CONTRACTOR |
| --- | NEW GAS PIPING ABOVE GRADE | MC | MECHANICAL CONTRACTOR |
| ---- | NEW GAS PIPING BELOW GRADE | --- | CONDUIT ABOVE CANOPY DECK |

GENERAL NOTES

- COORDINATE NEW WORK WITH EXISTING CONDUIT, STRUCTURE, AND PIPING. FIELD VERIFY EXISTING CONDITIONS PRIOR TO START OF WORK.
- COORDINATE LOCATION AND RESPONSIBILITIES FOR UNDERGROUND PIPING AND ASSOCIATED TRENCHING WITH GENERAL CONTRACTOR PRIOR TO START OF WORK.
- EXPOSED GAS PIPING SHALL BE PAINTED BY GENERAL CONTRACTOR.
- ACTUAL NUMBER OF GAS INFRARED HEATERS & COOLING FANS WILL BE DETERMINED BY SITE-SPECIFIC CANOPY LAYOUT AND EQUIPMENT LOCATIONS, AS INDICATED ON ARCHITECTURAL PLANS.
- CONTROL WIRING FOR HEATERS BY EC. COORDINATE WIRE GAUGE WITH EC. SEE ELECTRICAL AND CONTROLS DRAWINGS, TYP.

| BROMIC ELECTRIC HEATER SCHEDULE | | | | | | | |
|---------------------------------|--|------------|-------|-------|---------------|-----------|--------------|
| MARK | INPUT (KW) | FRAME SIZE | | | MOUNTING TYPE | MODEL | MANUFACTURER |
| | | LENGTH | WIDTH | DEPTH | | | |
| ALL EH | 6.0 | 56" | 8.5" | 3.5" | BRACKET | BH0420035 | BROMIC |
| NOTES | <ul style="list-style-type: none"> CHICK-FIL-A HAS A NATIONAL ACCOUNT WITH BROMIC COMPANY FOR THE ELECTRIC HEATER PACKAGE. THE MECHANICAL CONTRACTOR SHALL PURCHASE THE ELECTRIC HEATERS DIRECTLY FROM BROMIC COMPANY. CONTACT BLAKE RUSSIE AT 858-381-4850, FOR PRICING AND AVAILABILITY. BROMIC HEATERS NOT PURCHASED THRU BROMIC COMPANY WILL NOT BE ACCEPTED. | | | | | | |
| REMARKS | <ol style="list-style-type: none"> STAINLESS STEEL LENS WITH BLACK EMISSIVE COATING. PROVIDE ENGRAVED PLASTIC LABEL AT EACH UNIT WITH UNIT DESIGNATION IN 1" HIGH WHITE LETTERS ON A BLACK BACKGROUND. PROVIDE BLACK HEATER WITH HIGH TEMPERATURE COATING, AND WITH MOUNTING BRACKETS PER MANUFACTURER'S RECOMMENDATIONS. | | | | | | |

| CIRCULATING FAN SCHEDULE | | | | | |
|--------------------------|---|-----|----|-------|--------------|
| MARK | CFM | RPM | HP | MODEL | MANUFACTURER |
| | | | | | |
| REMARKS | <ol style="list-style-type: none"> ALUMINUM PADDLE WITH STEEL HUB/SPIDER PROPELLER. 360 DEG. ROTATING HEAD HORIZONTALLY AND VERTICALLY. OSHA COMPLIANT DOUBLE LOCKING, COATED STEEL WIRE GUARD. 3-SPEED, TOTALLY ENCLOSED, PERMANENTLY LUBRICATED BALL BEARING MOTOR. FACTORY PRE-WIRED POWER CORD. PROVIDE FACTORY WALL MOUNTING BRACKET. PROVIDE ENGRAVED PLASTIC LABEL AT EACH UNIT WITH UNIT DESIGNATION IN 1" HIGH WHITE LETTERS ON A BLACK BACKGROUND. MOUNT TO UNDERSIDE OF CANOPY OR EXISTING OVERHANG, FACING DOWNWARD, 12" LATERALLY FROM THE FAN LOCATION. REMOVE PULL CHAIN EXTENSION AT ON/OFF SWITCH IN FIELD. FACTORY CERTIFIED FOR OUTDOOR INSTALLATION. | | | | |



2 HVAC PLAN - MEAL DELIVERY CANOPY

NTS

FOR CONSTRUCTION

FOR CONSTRUCTION

FOR CONSTRUCTION

COMcheck Software Version 4.1.5.1
Envelope Compliance Certificate

Project Information
 Energy Code: 2015 IECC
 Project Title: Chick-fil-A #1879
 Location: Erie, Pennsylvania
 Climate Zone: 5a
 Project Type: Addition

Construction Site: 7160 Peach Tree, Erie, PA 16509
 Owner/Agent: Chick-fil-A, 5200 Buffington Road, Atlanta, GA 30349
 Designer/Contractor: Kurzynske & Associates, 2705 Lebanon Pike - Suite One, Nashville, TN 37214, 615-255-5203

| Building Area | Floor Area |
|--|------------|
| 1-Kitchen/Storage (Dining, Cafeteria/Fast Food) - Nonresidential | 575 |

Envelope Assemblies

| Assembly | Gross Area or Perimeter | Cavity R-Value | Cont. R-Value | Proposed U-Factor | Budget U-Factor _{req} |
|---|-------------------------|----------------|---------------|-------------------|--------------------------------|
| Roof 1: Insulation Entire Above Deck; High Albedo Roof Required, [Bldg Use 1 - Kitchen/Storage] | 575 | --- | 30.0 | 0.032 | 0.032 |
| Floor 1: Slab-On-Grade Unpropped, Vertical 2 ft., [Bldg Use 1 - Kitchen/Storage] (6) | 112 | --- | 10.0 | 0.540 | 0.540 |
| EAST Exterior Wall 1: Wood-Framed, 16" o.c., [Bldg Use 1 - Kitchen/Storage] | 230 | 20.0 | 0.0 | 0.064 | 0.064 |
| SOUTH Exterior Wall 2: Wood-Framed, 16" o.c., [Bldg Use 1 - Kitchen/Storage] | 723 | 20.0 | 0.0 | 0.064 | 0.064 |
| Door 1: Insulated Metal, Swinging, [Bldg Use 1 - Kitchen/Storage] | 28 | --- | --- | 0.330 | 0.370 |
| WEST Exterior Wall 3: Wood-Framed, 16" o.c., [Bldg Use 1 - Kitchen/Storage] | 230 | 20.0 | 0.0 | 0.064 | 0.064 |

(a) Budget U-factors are used for software baseline calculations ONLY and are not code requirements.
 (b) Slab-On-Grade proposed and budget U-factors shown in table are F-factors.

Envelope PASSES: Design 1% better than code

Envelope Compliance Statement
 Compliance Statement: The proposed envelope design represented in this document is consistent with the building plans, specifications, and other calculations submitted with this permit application. The proposed envelope systems have been designed to meet the 2015 IECC requirements in COMcheck Version 4.1.5.1 and to comply with any applicable mandatory requirements listed in the Inspection Checklist.

Name - Title _____ Signature _____ Date _____

COMcheck Software Version 4.1.5.1
Mechanical Compliance Certificate

Project Information
 Energy Code: 2015 IECC
 Project Title: Chick-fil-A #1879
 Location: Erie, Pennsylvania
 Climate Zone: 5a
 Project Type: Addition

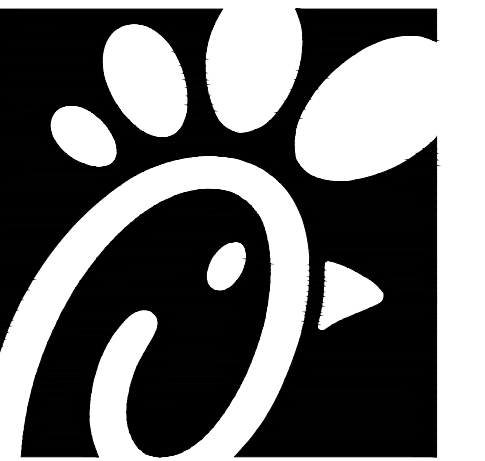
Construction Site: 7160 Peach Tree, Erie, PA 16509
 Owner/Agent: Chick-fil-A, 5200 Buffington Road, Atlanta, GA 30349
 Designer/Contractor: Kurzynske & Associates, 2705 Lebanon Pike - Suite One, Nashville, TN 37214, 615-255-5203

Mechanical Systems List

| Quantity | System Type & Description |
|----------|--|
| 1 | AC#1 (25 ton) (Single Zone): Heating: 1 each - Central Furnace, Gas, Capacity = 324 kBtu/h Proposed Efficiency = 81.00% EER, Required Efficiency: 80.00% EER Cooling: 1 each - Single Package DX Unit, Capacity = 276 kBtu/h, Air-Cooled Condenser, Air Economizer Proposed Efficiency = 9.80 EER, Required Efficiency: 9.80 EER + 11.4 IEER Fan System: AC#1 (25 ton) Kitchen - Compliance (Motor nameplate HP method) : Passes Fans: Supply Supply, Constant Volume, 8500 CFM, 6.2 motor nameplate hp, 0.0 fan efficiency grade Exhaust Exhaust, Constant Volume, 2000 CFM, 0.9 motor nameplate hp, 0.0 fan efficiency grade |
| 1 | AC#2 (8.5 ton) (Single Zone): Heating: 1 each - Central Furnace, Gas, Capacity = 162 kBtu/h Proposed Efficiency = 81.00% EER, Required Efficiency: 80.00% EER or 78% AFUE Cooling: 1 each - Single Package DX Unit, Capacity = 100 kBtu/h, Air-Cooled Condenser, Air Economizer Proposed Efficiency = 11.00 EER, Required Efficiency: 11.00 EER + 12.6 IEER Fan System: AC#2 (8.5 ton) Dining - Compliance (Motor nameplate HP method) : Passes Fans: Supply Supply, Constant Volume, 2830 CFM, 3.1 motor nameplate hp, 0.0 fan efficiency grade Exhaust Exhaust, Constant Volume, 750 CFM, 0.9 motor nameplate hp, 0.0 fan efficiency grade |
| 1 | AC#3 (10 ton) (Single Zone): Heating: 1 each - Central Furnace, Gas, Capacity = 194 kBtu/h Proposed Efficiency = 81.00% EER, Required Efficiency: 80.00% EER or 78% AFUE Cooling: 1 each - Single Package DX Unit, Capacity = 124 kBtu/h, Air-Cooled Condenser, Air Economizer Proposed Efficiency = 11.00 EER, Required Efficiency: 11.00 EER + 12.6 IEER Fan System: AC#3 (10 ton) Dining - Compliance (Motor nameplate HP method) : Passes Fans: Supply Supply, Constant Volume, 4000 CFM, 3.1 motor nameplate hp, 0.0 fan efficiency grade Exhaust Exhaust, Constant Volume, 1000 CFM, 0.9 motor nameplate hp, 0.0 fan efficiency grade |
| 1 | AC#4 (7.5 ton) (Single Zone): Heating: 1 each - Central Furnace, Gas, Capacity = 162 kBtu/h Proposed Efficiency = 81.00% EER, Required Efficiency: 80.00% EER or 78% AFUE Cooling: 1 each - Single Package DX Unit, Capacity = 93 kBtu/h, Air-Cooled Condenser, Air Economizer Proposed Efficiency = 11.00 EER, Required Efficiency: 11.00 EER + 12.6 IEER Fan System: AC#4 (7.5 ton) Dining - Compliance (Motor nameplate HP method) : Passes |

Mechanical Compliance Statement
 Compliance Statement: The proposed mechanical design represented in this document is consistent with the building plans, specifications, and other calculations submitted with this permit application. The proposed mechanical systems have been designed to meet the 2015 IECC requirements in COMcheck Version 4.1.5.1 and to comply with any applicable mandatory requirements listed in the Inspection Checklist.

Mark Kurzynske, P.E.
 Name - Title _____ Signature _____ Date _____



Chick-fil-A
 5200 Buffington Road
 Atlanta, Georgia 30349



Kurzynske & Associates
 CONSULTING ENGINEERS
 2705 Lebanon Pike - Suite One
 Nashville, Tennessee 37214
 Telephone: (615) 255-5203



CHICK-FIL-A
ERIE
 7160 PEACH TREE
 ERIE, PA 16509

FSR#01879

BUILDING TYPE / SIZE: S06C
 RELEASE: v05.22

| REVISION SCHEDULE | | |
|-------------------|------|-------------|
| NO. | DATE | DESCRIPTION |
| | | |

| | |
|----------------------|--------------|
| CONSULTANT PROJECT # | 22115.HF.R |
| PRINTED FOR | CONSTRUCTION |
| DATE | 01/11/2023 |
| DRAWN BY | DSF |

Information contained on this drawing and in all digital files produced for above named project may not be reproduced in any manner without express written or verbal consent from authorized project representatives.

SHEET
 MECH & ENVELOPE
 COMCHECK

SHEET NUMBER

M6.1

FOR CONSTRUCTION

CONSTRUCTION

E

E

D

D

C

C

B

B

A

A

I. SECTION C15000 - MECHANICAL SPECIFICATIONS

PART I - GENERAL

1.01 SCOPE

- A. IT IS THE RESPONSIBILITY OF CONTRACTOR TO READ ALL SPECIFICATIONS AND CONSULT ALL DRAWINGS WHICH MAY AFFECT THE INSTALLATION AND COORDINATION OF HIS WORK WITH OTHER TRADES. CONTRACTOR SHALL COORDINATE AND MAKE MINOR ADJUSTMENTS IN LOCATION OF EQUIPMENT AND MATERIALS AS NECESSARY TO SECURE COORDINATION.
- B. COMPLETED INSTALLATION SHALL CONFORM TO ALL APPLICABLE FEDERAL, STATE AND LOCAL CODES AND ORDINANCES, INCLUDING BUT NOT LIMITED TO THE LATEST APPROVED EDITIONS OF NFPA-96, NFPA-90A, NFPA-54, SMACNA, ASHRAE 90.1 AND ASHRAE 62.
- C. SYSTEM LAYOUT IS SCHEMATIC AND EXACT LOCATIONS SHALL BE DETERMINED BY STRUCTURAL CONDITIONS, COORDINATION WITH OTHER TRADES, COORDINATION WITH FINISHES AND OTHER CONDITIONS. STRUCTURAL SUPPORTS SHALL NOT BE CUT OR ALTERED TO ASSURE FIT OF HVAC SYSTEM. TEN FOOT CLEARANCE SHALL BE MAINTAINED BETWEEN OUTSIDE AIR INTAKES AND EXHAUST FANS AND PLUMBING VENT TERMINALS.
- D. CONTRACTOR SHALL BE RESPONSIBLE FOR ALL DEFECTS, REPAIRS AND REPLACEMENTS IN MATERIALS AND WORKMANSHIP FOR A PERIOD OF ONE (1) YEAR AFTER FINAL PAYMENT IS APPROVED. CONTRACTOR SHALL HONOR FACTORY WARRANTIES ON ALL EQUIPMENT PROVIDED AS PART OF THIS SYSTEM.
- E. UPON COMPLETION OF PROJECT, ALL SYSTEM EQUIPMENT AND MATERIALS SHALL BE IN NEW, CLEAN CONDITION WITH ALL DAMAGE RESTORED TO CONDITION ACCEPTABLE TO THE OWNERS REPRESENTATIVE. ALL EQUIPMENT, COMPONENTS AND DUCTWORK SHALL BE INSPECTED AND THOROUGHLY CLEANED, READY FOR USE. AT COMPLETION OF JOB, ALL MISCELLANEOUS TOOLS, SCAFFOLDING, SURPLUS MATERIALS, RUBBISH AND DEBRIS SHALL BE REMOVED BY CONTRACTOR.
- F. CONTRACTOR SHALL PROVIDE TWO SETS OF 2" MERV 8 OR HIGHER THROW AWAY TYPE FILTERS. A CLEAN SET SHALL BE PROVIDED PRIOR TO TEST AND BALANCE AND AGAIN PRIOR TO OPENING.

PART II - PRODUCTS

2.01 HEATING AND COOLING EQUIPMENT (C15730)

- A. FURNISH AND INSTALL R-410A ROOFTOP SINGLE PACKAGE COMBINATION ELECTRIC COOLING AND ELECTRIC HEATING UNITS BY TRANE AS SHOWN ON DRAWINGS. EQUIPMENT SHALL BE ARI CERTIFIED AND U.L. LISTED.
- B. ACCESSORIES SHALL INCLUDE LOW AND HIGH PRESSURE SAFETIES, CRANK CASE HEATER, OVERCURRENT AND OVERTEMPERATURE SAFETY, COMPRESSOR VIBRATION ISOLATORS, FILTER DRIERS, REFRIGERANT SERVICE VALVES, COIL HAIL GUARDS WHERE SCHEDULED, CONVENIENCE OUTLETS FACTORY INSTALLED ON SCHEDULED UNITS, UNIT MOUNTED NON-FUSED DISCONNECTS, LOW AMBIENT OPERATION DOWN TO 30 DEGREES F AND EVAPORATOR FREEZE STAT.
- C. COMPRESSORS SHALL BE FULLY HERMETIC SCROLL TYPE WITH INTERNAL VIBRATION ISOLATORS. COMPRESSORS SHALL BE PROVIDED WITH A MINIMUM FIVE (5) YEAR FULL WARRANTY.
- D. THE UNIT HEATING ELEMENTS SHALL BE BARE NICHROME WIRE EXPOSED TO THE AIR STREAM. HEATING CONTROLS SHALL INCLUDE TIME DELAY THAT SHALL BRING ELEMENTS ON AND OFF IN SEQUENCE WITH TIME DELAY BETWEEN EACH ELEMENT. HEATING SHALL BE PROVIDED IN TWO STAGES. LIMIT CONTROL SHALL PROVIDE OVERLOAD AND SHORT CIRCUIT PROTECTION. HEATER SHALL HAVE A ONE (1) YEAR WARRANTY.
- E. CHICK-FIL-A MAINTAINS A NATIONAL ACCOUNT FOR EQUIPMENT WITH TRANE CORPORATION. PRICING FOR THE EQUIPMENT HAS BEEN ESTABLISHED IN ADVANCE. CONTACT TRANE NATIONAL ACCOUNTS AT 630-400-4285 FOR PRICING, ORDERING AND AVAILABILITY.

2.02 DUCTWORK (C15735) (SEE DWG M2.1 FOR ADDITIONAL GREASE DUCT SYSTEM REQ.)

- A. ACCEPTABLE MANUFACTURERS OF INSULATION ARE MANVILLE, OWENS CORNING OR KNAUF.
- B. ALL DUCTWORK SHALL BE SHEET METAL, UNLESS NOTED OTHERWISE (U.N.O.).
- C. DUCT DIMENSIONS SHOWN ARE INSIDE CLEAR DIMENSIONS, U.N.O.
- D. CONSTRUCTION OF DUCTWORK SHALL MEET SMACNA 1" W.C. PRESSURE CLASS STANDARD AND RECOMMENDATIONS. SMACNA SHALL BE FOLLOWED WITH RESPECT TO GAGE THICKNESS, JOINTS, REINFORCING, CONSTRUCTION, INSTALLATION AND SUPPORT FOR PRESSURE CLASS STATED. ALL TRANSVERSE JOINTS IN RECTANGULAR AND ROUND DUCT SHALL BE SEALED PER SMACNA SEAL CLASS C WITH U.L. DUCT MASTIC SEALANT APPROVED FOR INTENDED USE. DUCT TAPE IS NOT AN ACCEPTABLE SUBSTITUTE FOR MASTIC UNLESS EQUAL TO HARDCAST FOIL-GRIP 1402 BUTYL RUBBER ADHESIVE TAPE.
- E. ALL DUCT INSULATION SHALL MEET MINIMUM R-VALUE REQUIRED BY ASHRAE 90.1 LATEST EDITION. ALL DUCT WRAP SHALL BE MINIMUM 2" THICK, 3/4 PCF AND 5.6 R-VALUE INSTALLED WITH EITHER A VAPOR BARRIER WITH MAXIMUM PERMEANCE 0.05 OR A MINIMUM 2 MIL ALUMINUM REINFORCED FOIL/KRAFT FACING.
- F. ALL DUCT DROPS FROM THE ROOFTOP UNITS SHALL BE EXTERNALLY INSULATED.
- G. SUPPLY AND RETURN AIR DUCTWORK SERVING ALL AREAS SHALL BE EXTERNALLY INSULATED.
- H. ALL AIR CONVEYANCE COMPONENTS SUCH AS, BUT NOT LIMITED TO DUCT, DUCT PLENUMS, GRILLES/DIFFUSERS, BACK PANS, AND BOOTS SHALL BE INSULATED. INSULATION TYPE IS COVERED ELSEWHERE IN THIS SPECIFICATION.
- I. RESTROOM RECTANGULAR EXHAUST AIR DUCTWORK SHALL BE LINED WITH 1" THICK, 1-1/2 PCF INSULATION.
- J. TRUNK DUCTS SHALL BE ISOLATED FROM UNIT VIBRATION WITH THE USE OF NFPA AND U.L. APPROVED FLEXIBLE CONNECTORS INSTALLED AT THE TOP OF BOTH SUPPLY AND RETURN DROPS.
- K. INSULATED FLEXIBLE DUCT MAY BE UTILIZED FOR RUNOUTS TO GRILLES AND DIFFUSERS ONLY IN THE HORIZONTAL POSITION AND IN MAXIMUM LENGTHS OF 4'-0", NO EXCEPTIONS. SEE TAKE-OFF DETAIL ON DRAWING M3.1.
- L. CONSTRUCTION OF FLEXIBLE DUCTWORK SHALL INCLUDE SPIRAL METAL HELIX BONDED TO A POLYESTER CORE, FIBERGLASS INSULATION WITH POLYETHYLENE OR MYLAR VAPOR BARRIER. ALL COMPONENTS SHALL HAVE APPROPRIATE U.L. APPROVAL AND SHALL BE EQUIVALENT TO THERMAFLEX MKE.
- M. FLEXIBLE DUCT SHALL BE INSTALLED PER THE "ADC FLEXIBLE DUCT PERFORMANCE AND INSTALLATION STANDARDS, 4TH ED" USING FOIL TAPE AND DRAWBAND ON THE INNER CORE AND TAPE OR DRAWBAND ON THE OUTER JACKET.
- N. DUCT TAPE SHALL BE EQUAL TO FASSON 181-B FX, 2-1/2" WIDE.
- O. SINGLE THICKNESS TURNING VANES SHALL BE INSTALLED AT 90 DEGREE TURNS IN SUPPLY DUCTWORK WHERE ANY ONE DIMENSION IS GREATER THAN 12".
- P. RADIUSSED ELBOWS MAY BE SUBSTITUTED FOR 90 DEGREE ELBOWS AT THE DISCRETION OF THE CONTRACTOR. CENTERLINE RADIUS EQUAL TO; R=W PER FIGURE NO. 2-2 IN SMACNA HVAC DUCT CONSTRUCTION STANDARDS.
- Q. EXTERNAL INSULATION ON BOTTOM OF DUCTS 24" OR WIDER SHALL BE SUPPORTED WITH STICK PINS ON 18" CENTERS. STICK PIN WASHERS SHALL BE COVERED WITH DUCT TAPE OR MASTIC.

2.03 CONTROLS (C15735)

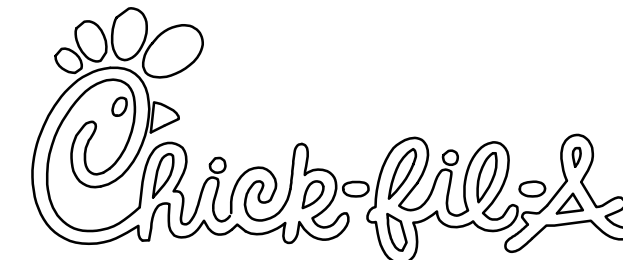
- A. SYSTEMS SHALL BE COMPLETE WITH CONNECTIONS TO EXISTING CFA-500 TEMPERATURE CONTROL PANEL AS MANUFACTURED BY SUNCOAST ENVIRONMENTAL CONTROLS (S.E.C.) (PH: 877-544-6679). CONTROL WIRING TERMINATIONS ARE BY THE MECHANICAL CONTRACTOR.
- B. THE SMOKE DETECTORS SHALL BE FACTORY INSTALLED AND WIRED BY THE ROOFTOP UNIT MANUFACTURER.
- C. A FACTORY INSTALLED SMOKE DETECTOR IN THE RETURN AIR SECTION OF EACH AIR CONDITIONING UNIT SHALL STOP THE INDOOR FAN AND CLOSE THE OUTSIDE AIR DAMPER IN THE EVENT OF EXCESSIVE TEMPERATURE OR SMOKE. SMOKE DETECTOR SHALL BE LOCATED PRIOR TO ANY EXHAUST FROM THE BUILDING OR MIXING WITH FRESH AIR MAKE-UP. UPON DETECTION, THE SYSTEM SHALL NOT RESTART UNTIL THE DEVICE IS MANUALLY RESET. DEVICES SHALL BE LOCATED WHERE THEY CAN BE EASILY ACCESSED AND WHERE CLEAR OF FILTERS.
- D. CHICK-FIL-A HAS A NATIONAL ACCOUNT WITH SUNCOAST ENVIRONMENTAL CONTROLS FOR THE SMOKE DETECTOR TEST/RESET ANNUNCIATOR STATIONS. THE TEST/RESET STATIONS WILL BE PURCHASED AND INSTALLED BY THE MECHANICAL CONTRACTOR AS A PART OF A NATIONAL ACCOUNT PACKAGE.
- E. THE REMOTE TEST/RESET ANNUNCIATORS SHALL BE PROVIDED AND INSTALLED BY THE MECHANICAL CONTRACTOR. INSTALLATION BY MECHANICAL SHALL INCLUDE MOUNTING OF THE ANNUNCIATORS AND ALL WIRING FROM EACH DEVICE TO THE RTU OR AHU. PROVIDE A JUNCTION BOX IN THE WALL WITH 1/2" CONDUIT STUBBED UP ABOVE THE CEILING FOR EACH REMOTE TEST STATION. ANNUNCIATOR SHALL BE SUNCOAST CONTROLS REMOTE TEST/RESET STATION WITH POWER LED, TROUBLE LED, ALARM LED, 90DB HORN AND TEST/RESET BUTTON.
- F. THE RESTROOM FAN SHALL BE INTERLOCKED TO THE LIGHTS SERVING THE MEN AND WOMEN'S RESTROOMS. THE HOOD FANS SHALL BE CONTROLLED VIA THE SUNCOAST CFA-500 CONTROL PANEL. WIRING, RELAYS AND SWITCHES FOR CONTROL OF ALL FANS ARE BY ELECTRICAL CONTRACTOR.
- G. TRANE UNITS - THERMOSTATS ARE PROVIDED AND INTEGRATED INTO THE TEMPERATURE CONTROL PANEL BY SUNCOAST ENVIRONMENTAL CONTROLS. SUNCOAST WILL PROVIDE A NETWORK THERMOSTAT US32-CFA TSTAT PRE-WIRED IN THE TEMPERATURE CONTROL PANEL. A REMOTE TEMPERATURE SENSOR FOR EACH THERMOSTAT IS ALSO PROVIDED. SOME UNITS MAY HAVE MORE THAN ONE SENSOR. MECHANICAL CONTRACTOR SHALL INSTALL ALL WIRING BETWEEN THE THERMOSTAT, THE REMOTE SENSOR AND THE ROOFTOP UNIT OR AHU.
- H. MECHANICAL CONTRACTOR SHALL INSTALL CONTROL WIRING IN 1/2" CONDUIT WHERE REQUIRED BY CODE. WHERE NOT REQUIRED TO BE IN CONDUIT, ALL WIRING SHALL BE RUN PARALLEL TO STRUCTURAL MEMBERS OR PERPENDICULAR WITH NO DIAGONAL ROUTING. ALL WIRING SHALL BE SECURED TO THE FRAMING TO PREVENT SAGGING IN RUNS. WIRING TO ROOFTOP UNITS SHALL BE ROUTED THROUGH THE FACTORY THRU-BASE FITTING IN THE UNIT BASE. NO SPLICING OF WIRING WILL BE ACCEPTED. ALL WIRING ABOVE THE ROOF SHALL BE INSTALLED IN EXTERIOR GRADE FLEXIBLE CONDUIT. ALL CONTROL WIRING AND CONTROL WIRING CONDUIT SHALL BE FURNISHED AND INSTALLED BY THE MECHANICAL CONTRACTOR. WIRING SHALL BE INSTALLED IN ACCORDANCE WITH LATEST EDITION OF NEC. ALL LOW VOLTAGE CONTROL WIRING SHALL BE NO LESS THAN 18 AWG MIN. CONTROL WIRING CONDUCTORS SHALL BE SIZED TO ACCOUNT FOR LOAD AND LENGTH OF RUN TO ALLOW SUFFICIENT VOLTAGE AVAILABLE AT CONTROLLED DEVICE TO OPERATE THE SYSTEM RELIABLY.

PART III - EXECUTION

3.01 SCOPE

- A. FURNISH AND INSTALL SYSTEM IN ACCORDANCE WITH REFERENCED STANDARDS, APPLICABLE CODES, MANUFACTURER'S RECOMMENDATIONS AND AS INDICATED ON DRAWINGS.
- B. OWNER SHALL TEST AND BALANCE MECHANICAL SYSTEM IN ACCORDANCE WITH NCI OR AABC STANDARDS TO ASSURE CONFORMANCE WITH DESIGN. G.C. WILL MAKE MECHANICAL CONTRACTOR AVAILABLE DURING TEST AND BALANCE TO ASSIST TESTING AGENCY AND TO MAKE CORRECTIONS IMMEDIATELY NECESSARY. CONTRACTOR SHALL CORRECT ITEMS ON WRITTEN TEST AND BALANCE REPORT.
- C. CONTRACTOR SHALL INSTRUCT THE OWNER'S REPRESENTATIVE IN ALL MATTERS PERTAINING TO THE PROPER MAINTENANCE OF EQUIPMENT FURNISHED UNDER THIS CONTRACT THROUGH DEMONSTRATION AND EXPLANATION OF OPERATING & MAINTENANCE MANUALS.
- D. CONTRACTOR SHALL PROVIDE A "SAMPLE MAINTENANCE PROPOSAL" TO THE OWNER'S REPRESENTATIVE IN ALL MATTERS PERTAINING TO THE PROPER MAINTENANCE OF EQUIPMENT FURNISHED UNDER THIS CONTRACT.
- E. CONTRACTOR SHALL COMPLETE A/C EQUIPMENT STARTUP DOCUMENTATION PROVIDED BY OWNER.

| NATIONAL ACCOUNTS | |
|-------------------|--|
| 1. | TRANE EQUIPMENT - CONTACT TRANE NATIONAL ACCOUNTS AT 630-400-4285 FOR PRICING, ORDERING AND AVAILABILITY. TRANE EQUIPMENT NOT PURCHASED THRU TRANE NATIONAL ACCOUNTS WILL NOT BE ACCEPTED. |
| 2. | LOREN COOK FAN AND CURB PACKAGE - THE MECHANICAL CONTRACTOR IS REQUIRED TO PURCHASE THE FAN/CURB PACKAGE DIRECTLY FROM TOM BARROW COMPANY. CONTACT MR. SCOTT GEORGE AT 404-351-1010 FOR PRICING AND AVAILABILITY. FANS AND CURBS NOT PURCHASED THRU TOM BARROW COMPANY WILL NOT BE ACCEPTED. |
| 3. | PRICE AIR DEVICES - THE MECHANICAL CONTRACTOR IS REQUIRED TO PURCHASE THE AIR DEVICES DIRECTLY FROM TOM BARROW COMPANY. CONTACT MR. SCOTT GEORGE AT 404-351-1010 FOR PRICING AND AVAILABILITY. AIR DEVICES NOT PURCHASED THRU TOM BARROW COMPANY WILL NOT BE ACCEPTED. |
| 4. | AIR DOORS - THE MECHANICAL CONTRACTOR IS REQUIRED TO PURCHASE THE AIR DOORS DIRECTLY FROM TOM BARROW COMPANY. CONTACT MR. SCOTT GEORGE AT 404-351-1010 FOR PRICING AND AVAILABILITY. AIR DOORS NOT PURCHASED THRU TOM BARROW COMPANY WILL NOT BE ACCEPTED. |
| 5. | HALTON HOODS - CHICK-FIL-A WILL PURCHASE AND PROVIDE THE HOODS FOR INSTALLATION BY THE MECHANICAL CONTRACTOR. THE MECHANICAL CONTRACTOR SHALL BE RESPONSIBLE FOR RECEIVING THE HOODS. CONTACT HALTON CO. AT 270-237-5600 FOR MORE INFO. |
| 6. | ROYAL METAL PRODUCTS START COLLARS - THE MECHANICAL CONTRACTOR IS REQUIRED TO PURCHASE THE START COLLARS DIRECTLY FROM TOM BARROW COMPANY. CONTACT MR. SCOTT GEORGE AT 404-351-1010 FOR PRICING AND AVAILABILITY. START COLLARS NOT PURCHASED THRU TOM BARROW COMPANY WILL NOT BE ACCEPTED. |
| 7. | SCHWANK INFRARED HEATER PACKAGE - THE MECHANICAL CONTRACTOR IS REQUIRED TO PURCHASE THE HEATER PACKAGE DIRECTLY FROM TOM BARROW COMPANY. CONTACT MR. SCOTT GEORGE AT 404-351-1010 FOR PRICING AND AVAILABILITY. HEATERS NOT PURCHASED THRU TOM BARROW COMPANY WILL NOT BE ACCEPTED. |
| 8. | CIRCULATING FAN PACKAGE - THE MECHANICAL CONTRACTOR IS REQUIRED TO PURCHASE THE FAN PACKAGE DIRECTLY FROM TOM BARROW COMPANY. CONTACT MR. SCOTT GEORGE AT 404-351-1010 FOR PRICING AND AVAILABILITY. FANS NOT PURCHASED THRU TOM BARROW COMPANY WILL NOT BE ACCEPTED. |
| 9. | BROMIC ELECTRIC HEATER PACKAGE - THE MECHANICAL CONTRACTOR IS REQUIRED TO PURCHASE THE HEATER DIRECTLY FROM BROMIC COMPANY. CONTACT BLAKE RUSSIE AT 858-381-4850 FOR PRICING AND AVAILABILITY. HEATERS NOT PURCHASED THRU BROMIC COMPANY WILL NOT BE ACCEPTED. |



Chick-fil-A
5200 Buffington Road
Atlanta, Georgia 30349



Kurzynske & Associates
CONSULTING ENGINEERS
2705 Lebanon Pike - Suite One
Nashville, Tennessee 37214
Telephone: (615) 255-8203



CHICK-FIL-A
ERIE
7160 PEACH TREE
ERIE, PA 16509

FSR#01879

BUILDING TYPE / SIZE: S06C
RELEASE: v05.22

| REVISION SCHEDULE | | |
|-------------------|------|-------------|
| NO. | DATE | DESCRIPTION |
| | | |

CONSULTANT PROJECT # 22115.HF.R
PRINTED FOR CONSTRUCTION
DATE 01/11/2023
DRAWN BY DSF

Information contained on this drawing and in all digital files produced for above named project may not be reproduced in any manner without express written or verbal consent from authorized project representatives.

SHEET
MECHANICAL
SPECIFICATIONS
SHEET NUMBER

M7.1

CONSTRUCTION

