

KITCHEN HOOD SCHEDULE

TAG	DESCRIPTION	MAX COOKING TEMP.	EXHAUST PLENUM							PERFORATED SUPPLY PLENUMS							BASIS FOR DESIGN				REMARKS				
			AIRFLOW	E.S.P.	DUCT COLLARS			LENGTH	WIDTH	LENGTH	WIDTH	LENGTH	WIDTH	MAU PLENUM			AC PLENUM		NO. OF LIGHT FIXTURES	WEIGHT		FURNISHED BY	INSTALLED BY	MANUFACTURER	MODEL
					NO.	WIDTH	LENGTH							AIRFLOW	NO.	WIDTH	LENGTH	AIRFLOW							
HD-1	TYPE I CANOPY HOOD WITH PERFORATED MAU AND AC SUPPLY PLENUMS	600 °F	2,550 CFM	0.97 in-wg	1	10"	2'-0"	12'-9"	4'-3"	13'-9"	1'-7"	1,300 CFM	3	6"	2'-4"	700 CFM	6	8"	8	1,150 lb	HS	GC	CAPTIVE-AIRE	5424 ND-2-ACPS-F	MAT'L: 18 GA. TYPE 430 SS. FURNISHED WITH VERTICAL END PANELS, VAPORPROOF INCANDESCENT LIGHT FIXTURES, 16" TALL HE SS FILTERS, INTEGRAL UTILITY CABINET, KITCHEN EXHAUST SUPPRESSION SYSTEM, DUCT COLLAR TEMPERATURE SENSOR, PREWIRE PACKAGE, SPARE FIRE SYSTEM DRY CONTACT, AND 4-POLE 20A CONTACTOR

GRAVITY VENTILATOR SCHEDULE

TAG	MANUFACTURER	MODEL	MATERIAL	COLOR	SIZE (INCHES) WIDTH/HEIGHT	FREE AREA (SQ. FT.)	FLOW (CFM)	PRESS. DROP (IN. WC)	SERVES	NOTES
GV-1	GREENHECK	FGI	ALUMINIUM	BY ARCH	18X18	2.25	1300	0.085	MAU OA	1-5

NOTES:
 1. COLOR AS SPECIFIED BY ARCHITECT.
 2. WITH BIRD SCREEN.
 3. WITH FACE FLANGE.
 4. FREE AREA LISTED IS MINIMUM REQUIRED.
 5. WITH MOTORIZED DAMPER.
 EQUALS BY: ENGINEER APPROVED EQUAL.

AIR BALANCE SCHEDULE

TAG	SUPPLY	RETURN	OUTSIDE AIR	EXHAUST AIR
FUR-1&2	3200	2400	800	-
FUR-3&4	3200	2500	700	-
MAU-1	1300	-	1300	-
EF-1	-	-	-	2550
EF-2&3	-	-	-	160
EF-4	-	-	-	1050
L-2	-	-	1050	-
NET PRESSURIZATION=			+90	

AIR TERMINAL SCHEDULE

TAG	DESCRIPTION	FACE SIZE	MATERIAL	FINISH	MOUNTING	FURNISHED BY	INSTALLED BY	BASIS FOR DESIGN		NOTES
								MANUFACTURER	MODEL	
CD1	PERFORATED CEILING DIFFUSER	24" X 24"	ALUMINIUM	WHITE	LAY-IN CEILING	GC	GC	NAILOR	4320A TYPE L	PROVIDE WITH INTEGRAL OBD
CD2	PERFORATED CEILING DIFFUSER	24" X 12"	ALUMINIUM	WHITE	LAY-IN CEILING	GC	GC	NAILOR	4320A TYPE L	PROVIDE WITH INTEGRAL OBD, REMOVE 4-WAY DEFLECTORS
CD3	PERFORATED CEILING DIFFUSER	12" X 12"	ALUMINIUM	WHITE	SURFACE MOUNT	GC	GC	NAILOR	4320A TYPE S	PROVIDE WITH INTEGRAL OBD
RG1	PERFORATED CEILING RETURN	48" X 24"	ALUMINIUM	WHITE	LAY-IN CEILING	GC	GC	NAILOR	4330R TYPE L	
RG2	PERFORATED CEILING RETURN	48" X 24"	ALUMINIUM	WHITE	SURFACE MOUNT	GC	GC	NAILOR	4330R TYPE S	
SR1	ADJUSTABLE TURBO NOZZLE	SEE NECK SIZE	ALUMINIUM	WHITE	WALL	GC	GC	AIR CONCEPTS	ANR-14	PROVIDE WITH CONCEALED MOUNTING AND FACE-ACCESSIBLE OBD

VIROGUARD SCHEDULE

TAG	COUNT	DESCRIPTION	DUCT CONNECTION SIZE	FAN	FURNISHED BY	INSTALLED BY	BASIS FOR DESIGN
VG-1	1	VIROGUARD HOOD EXHAUST FAN ROOFTOP CONTAINMENT SYSTEM	16" X 16"	CAPTIVE-AIRE DU180HFA	TDC	GC	ENVIROMATIC

HUMIDIFIER SCHEDULE

TAG	MANUFACTURER	MODEL	AIRFLOW		REFRIGERANT TYPE	WEIGHT	HUMIDIFIER TOTAL CAP. (P/DAY)	AMPS/VOLTAGE/PHASE	FURNISHED BY	INSTALLED BY	NOTES
			TOTAL (CFM)	E.S.P. (IN. W.C.)							
DH-1	QUEST	876-4037600	1850	.5	R-410A	340 LBS.	876	42.5A/230V/1PH	HES	GC	A, B

NOTES:
 A. PROVIDE WITH DEHUMIDISTAT.
 B. PROVIDE WITH SUPPLY AND RETURN DUCT KIT.
 EQUALS BY: ENGINEER APPROVED EQUAL.

LOUVER SCHEDULE

TAG	MANUFACTURER	MODEL	MATERIAL	COLOR	SIZE (INCHES) WIDTH/HEIGHT	FREE AREA (SQ. FT.)	FLOW (CFM)	PRESS. DROP (IN. WC)	SERVES	NOTES
L-1	GREENHECK	ESD-635	ALUMINIUM	BY ARCH	50x24	3.92	1500	0.022	FUR OA	1-5
L-2	GREENHECK	ESD-635	ALUMINIUM	BY ARCH	50x24	3.92	1050	0.011	CU 5-7	1-5

NOTES:
 1. COLOR AS SPECIFIED BY ARCHITECT.
 2. WITH BIRD SCREEN.
 3. WITH FACE FLANGE.
 4. FREE AREA LISTED IS MINIMUM REQUIRED.
 5. WITH MOTORIZED DAMPER.
 EQUALS BY: ENGINEER APPROVED EQUAL.

CONDENSING UNIT SCHEDULE

TAG	DESCRIPTION	NOMINAL CAPACITY	NUMBER OF COMPRESSORS	CIRCUITS	REFRIGERANT TYPE	CHARGE	WEIGHT	ELECTRICAL			FURNISHED BY	INSTALLED BY	BASIS FOR DESIGN		REMARKS
								MOCP	FLA	V/P/H			MANUFACTURER	MODEL	
CU-5	CONDENSING UNIT - WALK-IN COOLER		1	1	R-404A	10.4 lb	250 lb	15 A	9 A	208/3/60	WCS	GC	HARFORD	KPCL99M20P-3E	FURNISHED WITH WALK-IN COOLER
CU-6	REMOTE CONDENSER - LOW CAPACITY ICE MAKER		0	1	R-404A	11.46 lb	100 lb			120/1/60	KES	GC	HOSHIZAKI	URC-9FZ	FURNISHED WITH ICE MAKER
CU-7	REMOTE CONDENSER - SODA MACHINE ICE MAKER		0	1	R-404A	3.86 lb	100 lb			120/1/60	KES	GC	HOSHIZAKI	URC-5FZ	FURNISHED WITH ICE MAKER

MAKEUP AIR UNIT SCHEDULE

TAG	DESCRIPTION	AIRFLOW	E.S.P.	HEATING			WEIGHT	ELECTRICAL		FURNISHED BY	INSTALLED BY	BASIS FOR DESIGN		REMARKS
				INPUT	OUTPUT	EAT					MANUFACTURER	MODEL		
MAU-1	DIRECT-FIRED MAKEUP AIR UNIT	1,300 CFM	0.50 in-wg	78,010 Btu/h	71,769 Btu/h	21 °F	650 lb	1 hp	208/3/60	HS	GC	CAPTIVE-AIRE	A1-D-250-15D	12.5:1 MAX TURNDOWN. FURNISHED WITH DISCONNECT, HANGING FROM SUPPORTS, SCREEN INTAKE, AND WASHABLE ALUMINIUM FILTERS

FURNACE SCHEDULE

TAG	MANUFACTURER	MODEL	SERVICE	FAN DATA				MOTOR/ELECTRICAL DATA			HEAT			COOLING			DIMENSION S LxWxH (IN.)	OP. WT. (LBS)	NOTES	
				AIR FLOW (CFM)	MIN. OA	E.S.P. (IN. W.C.)	OPER. ELEV. (FEET)	HORSE POWER	VOLTS/PH.	AMPS	FUEL	INPUT (MBH)	% EFF.	OUTPUT (MBH-ALT)	TYPE	NOMINAL CAPACITY				COIL MODEL NUMBER
F-1	TRANE	S9V2C080USPSB	FOH	1800	400	0.75	50	0.2	120V/1PH	13.9	N. GAS	80	96	77.6	DX COIL	4 TONS	4TTA4	36x23x31	139	A-C
F-2	TRANE	S9V2C080USPSB	FOH	1800	400	0.75	50	0.2	120V/1PH	13.9	N. GAS	80	96	77.6	DX COIL	4 TONS	4TTA4	36x23x31	139	A-C
F-3	TRANE	S9V2C080USPSB	BOH	1800	350	0.75	50	0.2	120V/1PH	13.9	N. GAS	80	96	77.6	DX COIL	4 TONS	4TTA4	36x23x31	139	A-C
F-4	TRANE	S9V2C080USPSB	BOH	1800	350	0.75	50	0.2	120V/1PH	13.9	N. GAS	80	96	77.6	DX COIL	4 TONS	4TTA4	36x23x31	139	A-C

NOTES:
 A. SEALED COMBUSTION. MINIMUM 90% EFFICIENT.
 B. EC MOTOR.
 C. MERV 13 FILTER.
 EQUALS BY: CARRIER, DAIKIN, GOODMAN, JCI, OR ENGINEER APPROVED EQUAL.

CONTROL FUNCTIONS

- A. THE MAIN COOKING EXHAUST FAN AND MAKE-UP AIR UNIT SHALL BE INTERLOCKED TO OPERATE TOGETHER. THIS CONTROL CIRCUIT IS ACTIVATED BY A SWITCH AND INCLUDES A FIRE PROTECTION OVERRIDE.
 B. THE TEMPERATURE IN EACH ZONE IS CONTROLLED BY SPACE TEMPERATURE SENSORS CONNECTED TO THE THERMOSTATS LOCATED IN THE OFFICE. ALL ZONES SHALL OPERATE WITH CONTINUOUS FAN OPERATION DURING OCCUPIED TIMES AND INTERMITTENTLY AS NEEDED TO MAINTAIN SET POINTS DURING UNOCCUPIED TIMES. L-1 MOTORIZED DAMPER SHALL BE OPEN CONTINUOUSLY WHEN EITHER IN OCCUPIED MODE OR WHEN THE HOOD SYSTEM IS ON AND SHALL BE CLOSED DURING UNOCCUPIED PERIODS.
 C. THE THERMOSTATS SHALL DETERMINE OCCUPIED/UNOCCUPIED STATUS BASED ON THE SCHEDULE IN THE ENERGY MANAGEMENT SYSTEM.

SANITIZING EQUIPMENT SCHEDULE

TAG	COUNT	DESCRIPTION	FURNISHED BY	INSTALLED BY	BASIS FOR DESIGN		REMARKS
					MANUFACTURER	MODEL	
SB-1	2	BATHROOM AIR PURIFICATION UNIT	TUV	GC	RGF ENVIRONMENTAL GROUP	BRU ASSEMBLY	SEE ELECTRICAL SHEETS FOR CONNECTION INFORMATION
SH-1	4	HVAC AIR PURIFICATION UNIT	TUV	GC	RGF ENVIRONMENTAL GROUP	REME-HALO	SEE DETAIL G/M700 FOR INSTALLATION INFORMATION.
SI-1	3	ICE MACHINE TREATMENT SYSTEM	TUV	GC	RGF ENVIRONMENTAL GROUP	IMS-B-GA	SEE PLUMBING DRAWINGS FOR INSTALLATION INFORMATION.

CONDENSING UNIT SCHEDULE

TAG	MANUFACTURER	MODEL	SERVICE	NOMINAL CAPACITY	OPERATING CONDITIONS				ELECTRICAL DATA			ARI RATINGS			DIMENSION S LxWxH (IN.)	OP. WT. (LBS)	NOTES	
					OAT DB (DEG. F.)	OAT WB (DEG. F.)	COIL EAT (DEG. F.)	COIL MIN. CAP. SENS. (MBH)	OUTPUT (MBH-ALT)	VOLTS/PH.	MOP	MCA	SEER	EER				CAPACITY (MBH)
CU-1	TRANE	4TTA4048A3000A	FUR-1/CC-1	4 TONS	91	74	80	38.44	50.36	208-230/1PH	30	18	15	12.5	48.5	34x37x29	189	A-F
CU-2	TRANE	4TTA4048A3000A	FUR-2/CC-2	4 TONS	91	74	80	38.44	50.36	208-230/1PH	30	18	15	12.5	48.5	34x37x29	189	A-F
CU-3	TRANE	4TTA4048A3000A	FUR-3/CC-3	4 TONS	91	74	80	38.44	50.36	208-230/1PH	30	18	15	12.5	48.5	34x37x29	189	A-F
CU-4	TRANE	4TTA4048A3000A	FUR-4/CC-4	4 TONS	91	74	80	38.44	50.36	208-230/1PH	30	18	15	12.5	48.5	34x37x29	189	A-F

NOTES:
 A. 40° F LOW AMBIENT KIT.
 B. REFRIGERANT LINE SET. SIZED BY MANUFACTURER.
 C. COMPRESSOR HARD START KIT.
 D. CRANKCASE HEATER.
 E. HAIL GUARD.
 F. LEVEL 6" CONCRETE PAD BY M.C.
 EQUALS BY: CARRIER, GOODMAN, JCI, OR OTHER NATIONALLY RECOGNIZED MANUFACTURER.

Consultant:

Bowman

323 3RD AVENUE, #100
 LONGMONT, CO 80501
 TEL 303.676.1100
 WWW.BOWMAN.COM



COPYRIGHT 2024
 THIS DRAWING IS AN INSTRUMENT OF SERVICE AND AS SUCH REMAINS THE PROPERTY OF CHIPOTLE MEXICAN GRILL, INC.. PERMISSION FOR USE OF THIS DOCUMENT IS LIMITED AND CAN BE EXTENDED ONLY BY WRITTEN AGREEMENT WITH CHIPOTLE MEXICAN GRILL, INC..



CHIPOTLE MEXICAN GRILL, INC.
 PO BOX 182566
 COLUMBUS, OH 43218-2566
 TELEPHONE: 614.318.2400
 INTERNET: WWW.CHIPOTLE.COM

STORE NO.: 10-4918

OAKWOOD, GA
 3453 MUNDY MILL RD
 OAKWOOD, GA 30542

Issue Record:

02/16/2024	PERMIT SET
06/10/2024	IFC SET

Revisions:

Drawn: PM: CC: EOR:
 MPC BE WS MPC

Project No:

230414

Contents:

HVAC SCHEDULES

M600



COPYRIGHT 2024
 THIS DRAWING IS AN INSTRUMENT OF SERVICE
 AND AS SUCH REMAINS THE PROPERTY OF
 CHIPOTLE MEXICAN GRILL, INC.. PERMISSION FOR
 USE OF THIS DOCUMENT IS LIMITED AND CAN BE
 EXTENDED ONLY BY WRITTEN AGREEMENT WITH
 CHIPOTLE MEXICAN GRILL, INC..



CHIPOTLE MEXICAN GRILL, INC.
 PO BOX 182566
 COLUMBUS, OH 43218-2566
 TELEPHONE: 614.318.2400
 INTERNET: WWW.CHIPOTLE.COM

STORE NO.: 10-4918
 OAKWOOD, GA
 3453 MUNDY MILL RD
 OAKWOOD, GA 30542

Issue Record:

02/16/2024	PERMIT SET
06/10/2024	IFC SET

Revisions:

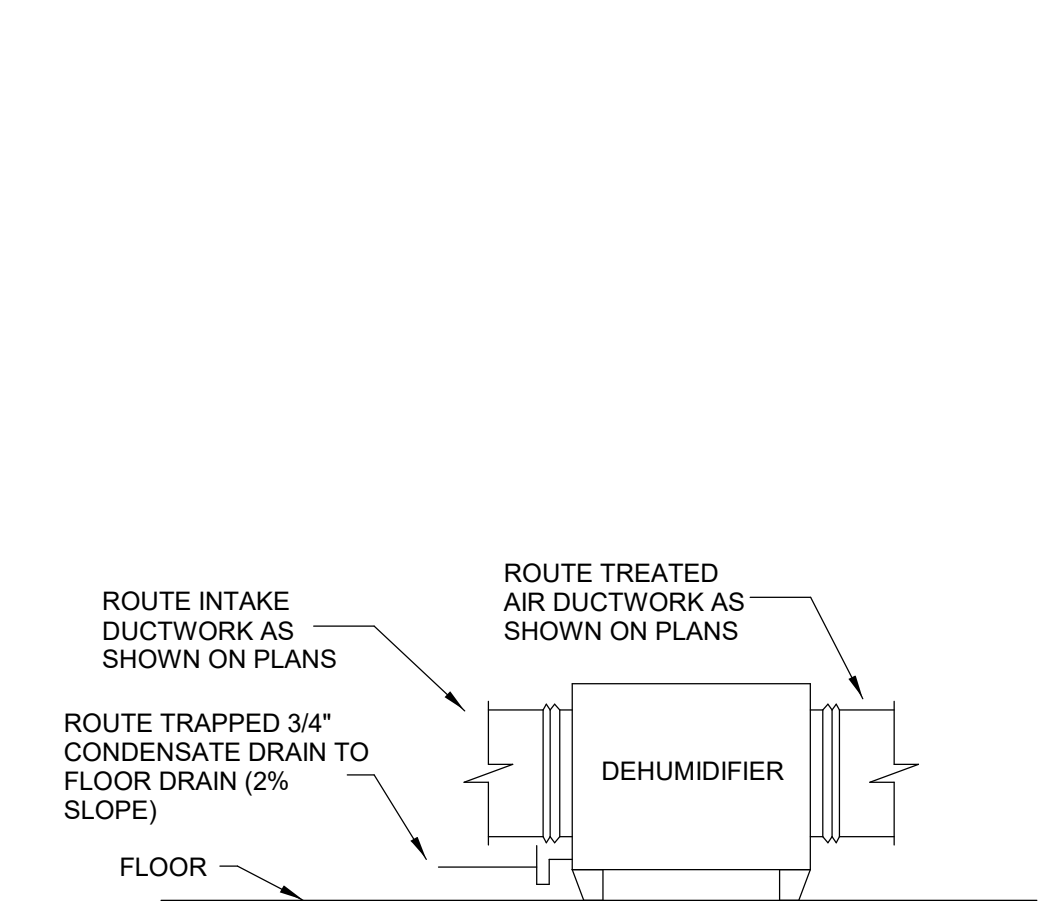
Drawn:	PM:	CC:	EOR:
MPC	BE	WS	MPC

Project No:
 230414

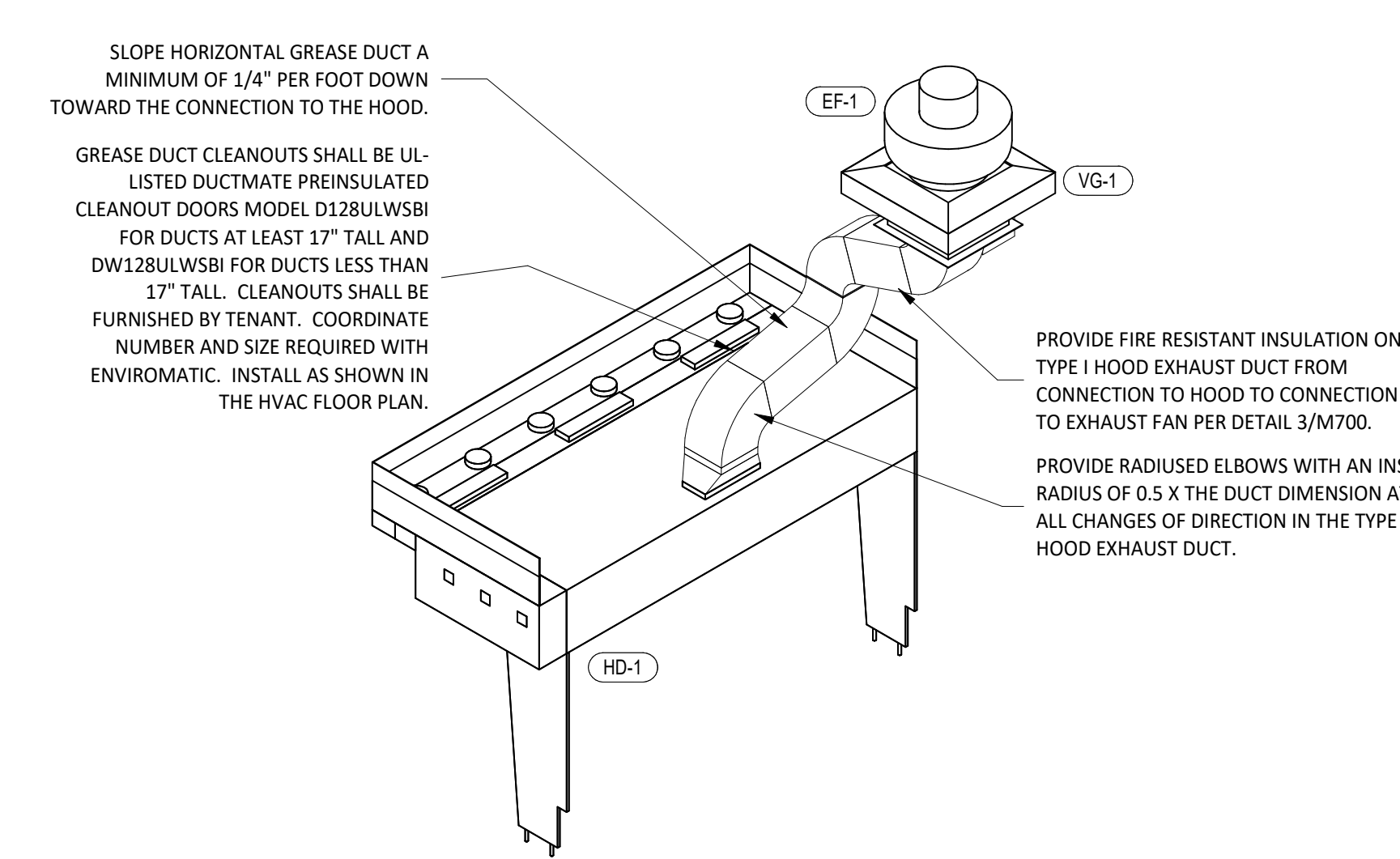
Contents:

HVAC DETAILS

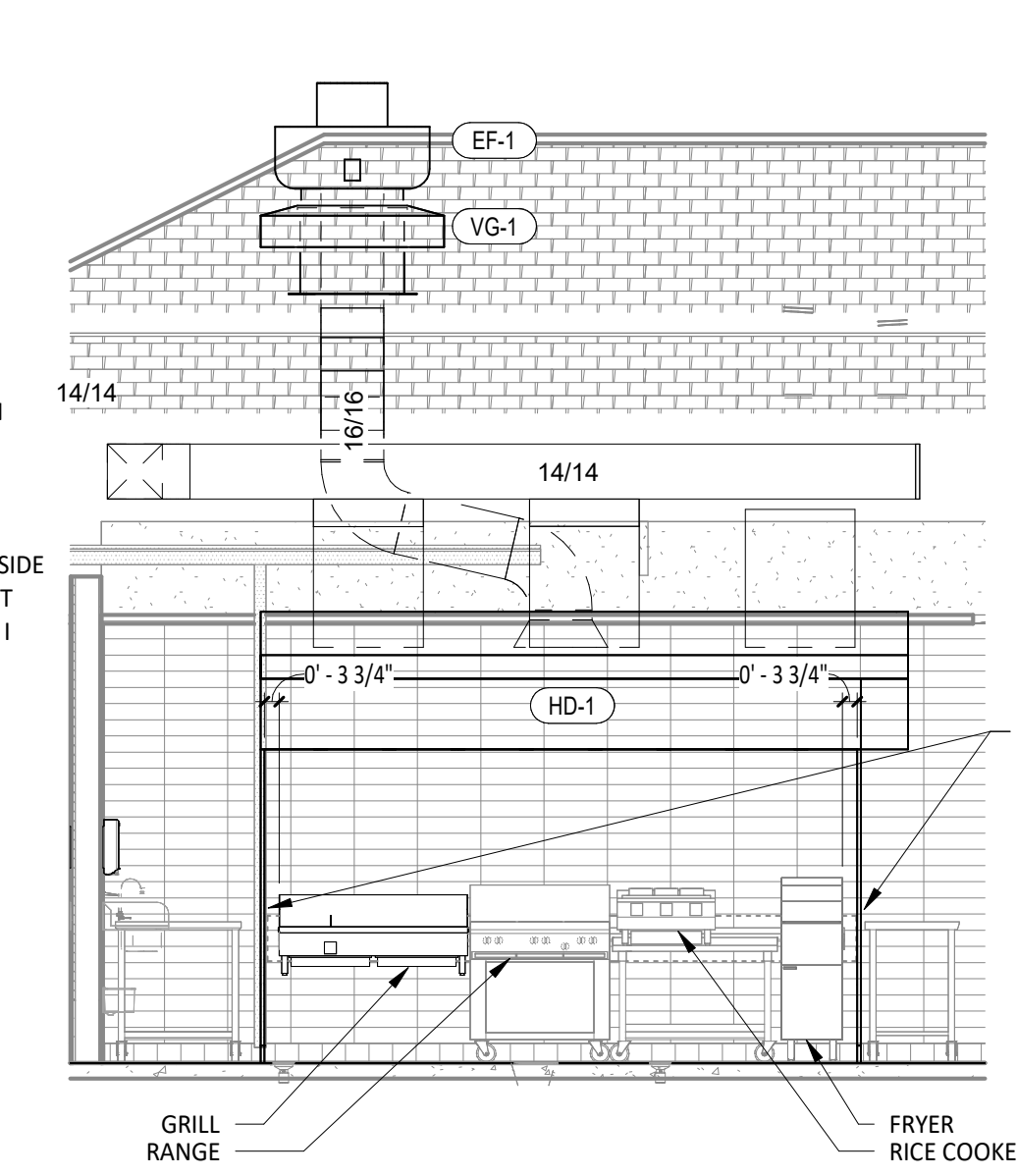
M700



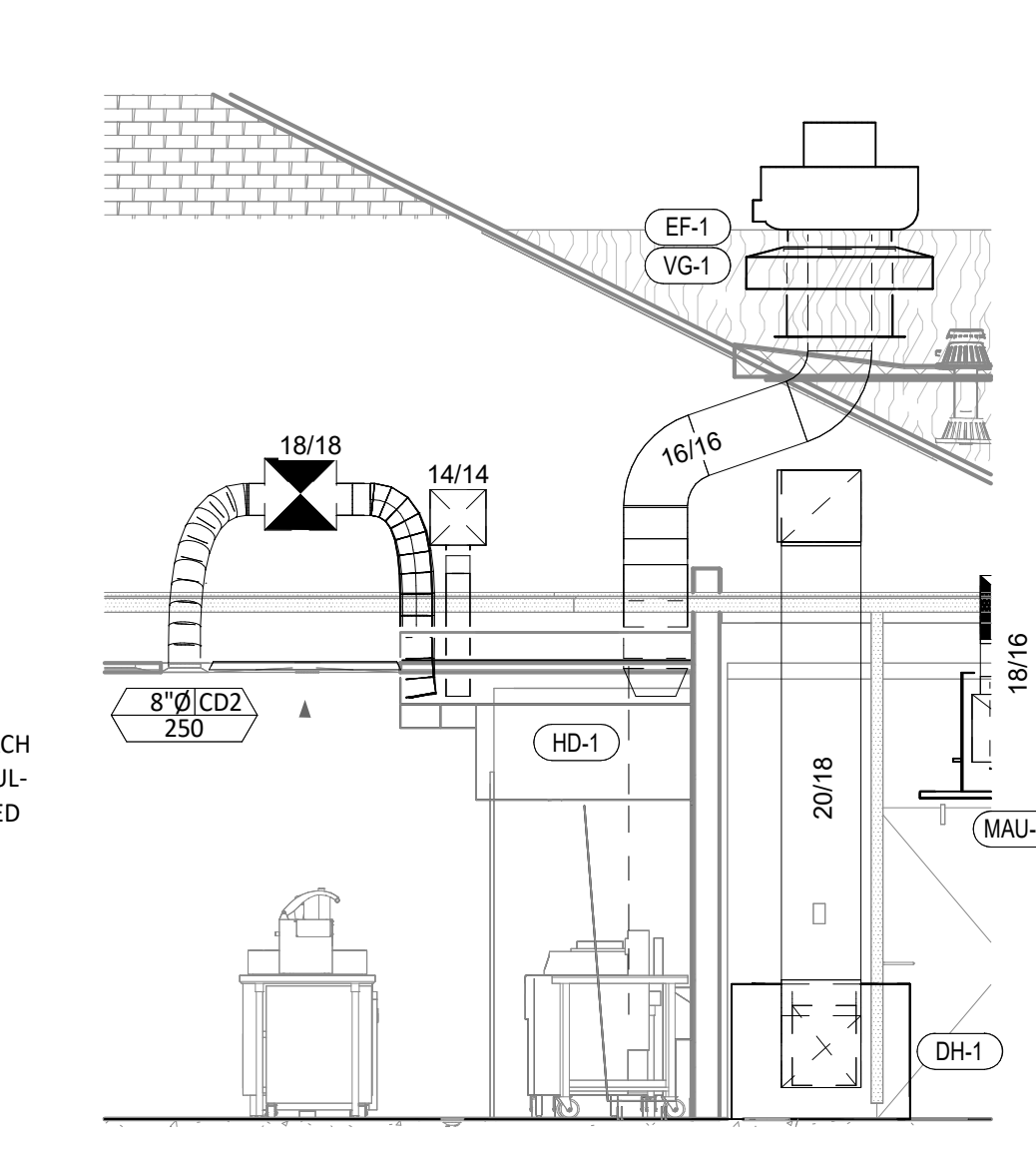
10
M700
DEHUMIDIFIER DETAIL
 NOT TO SCALE



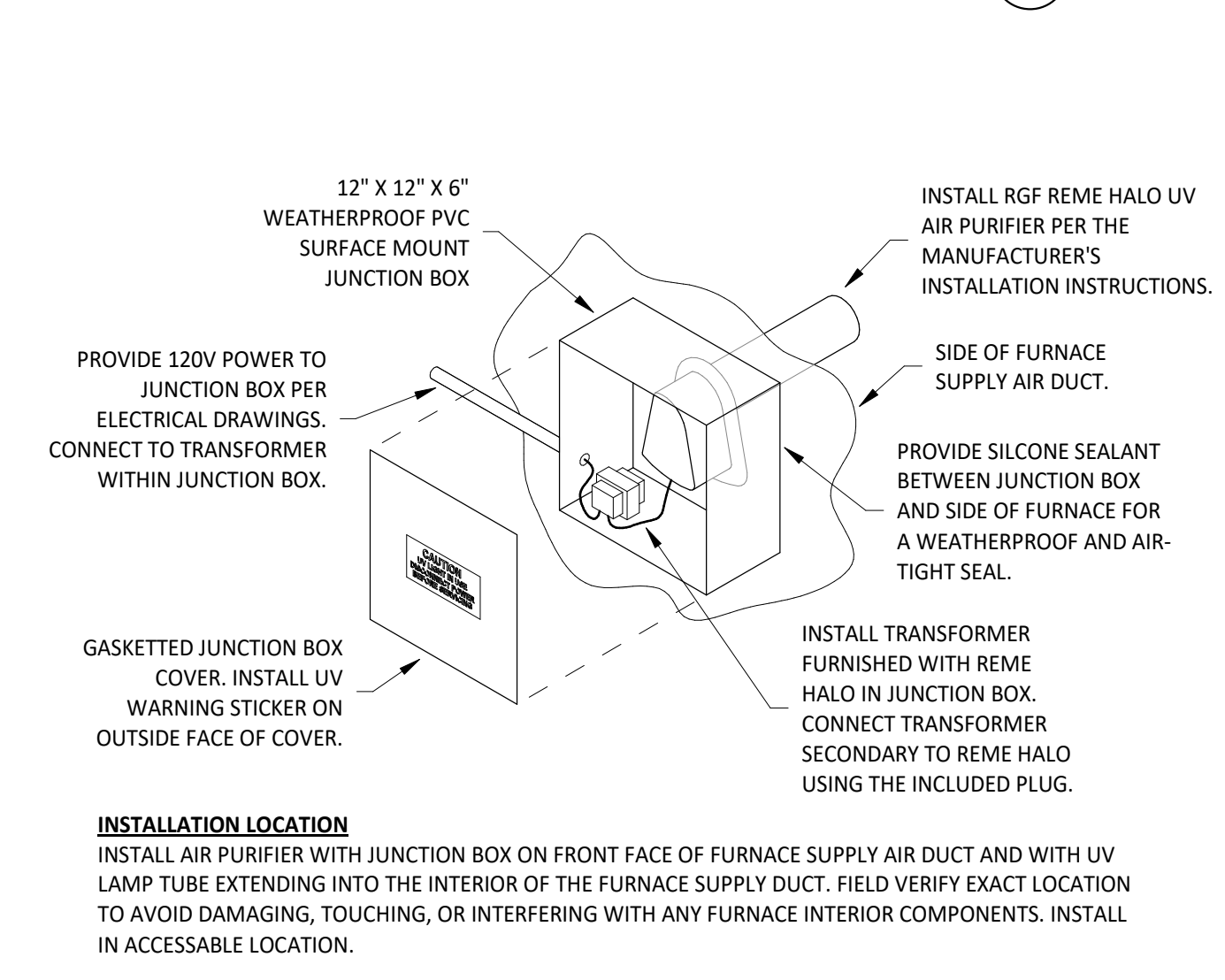
9
M700
HOOD EXHAUST ISOMETRIC
 NOT TO SCALE



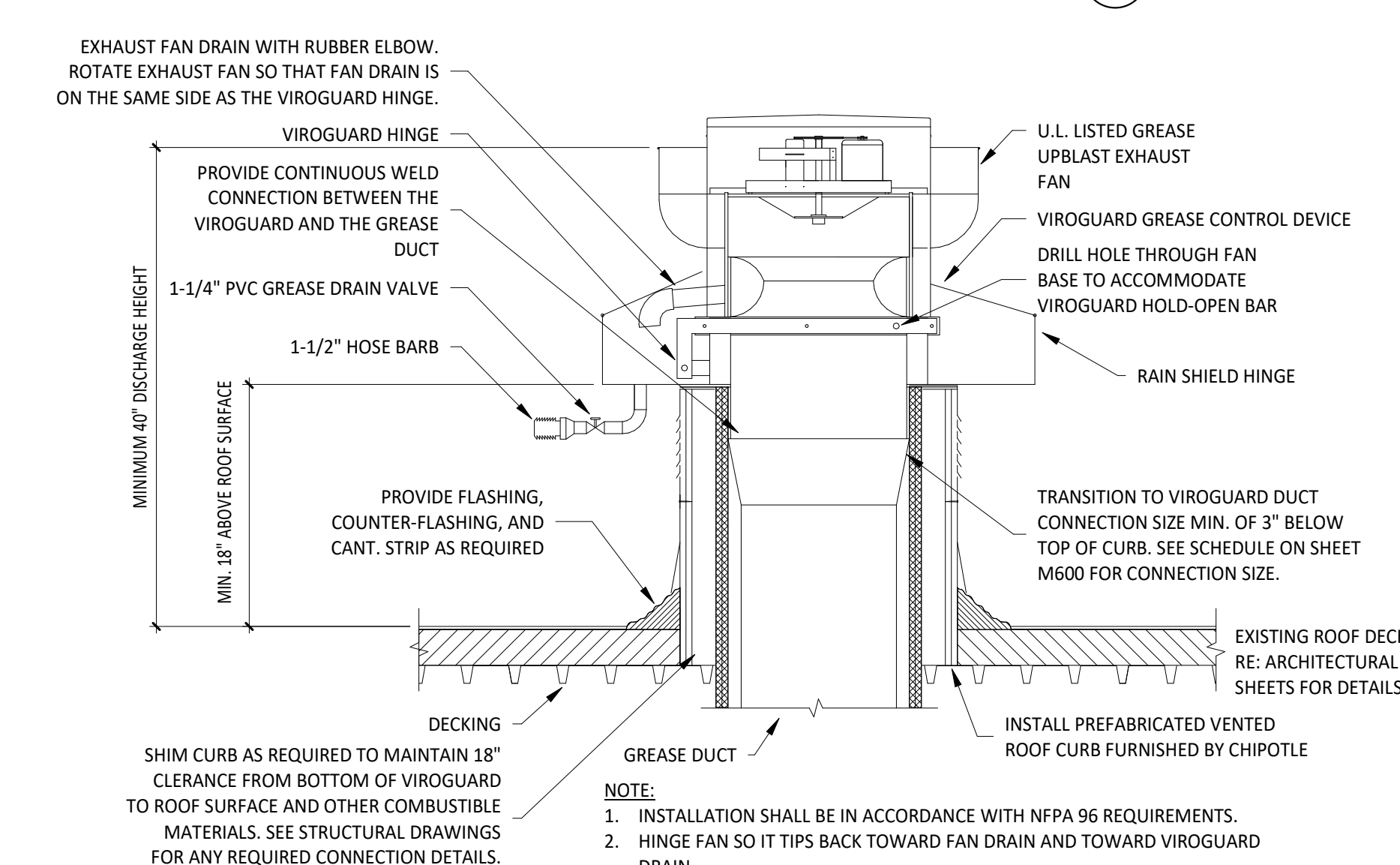
8
M700
HOOD ELEVATION
 NOT TO SCALE



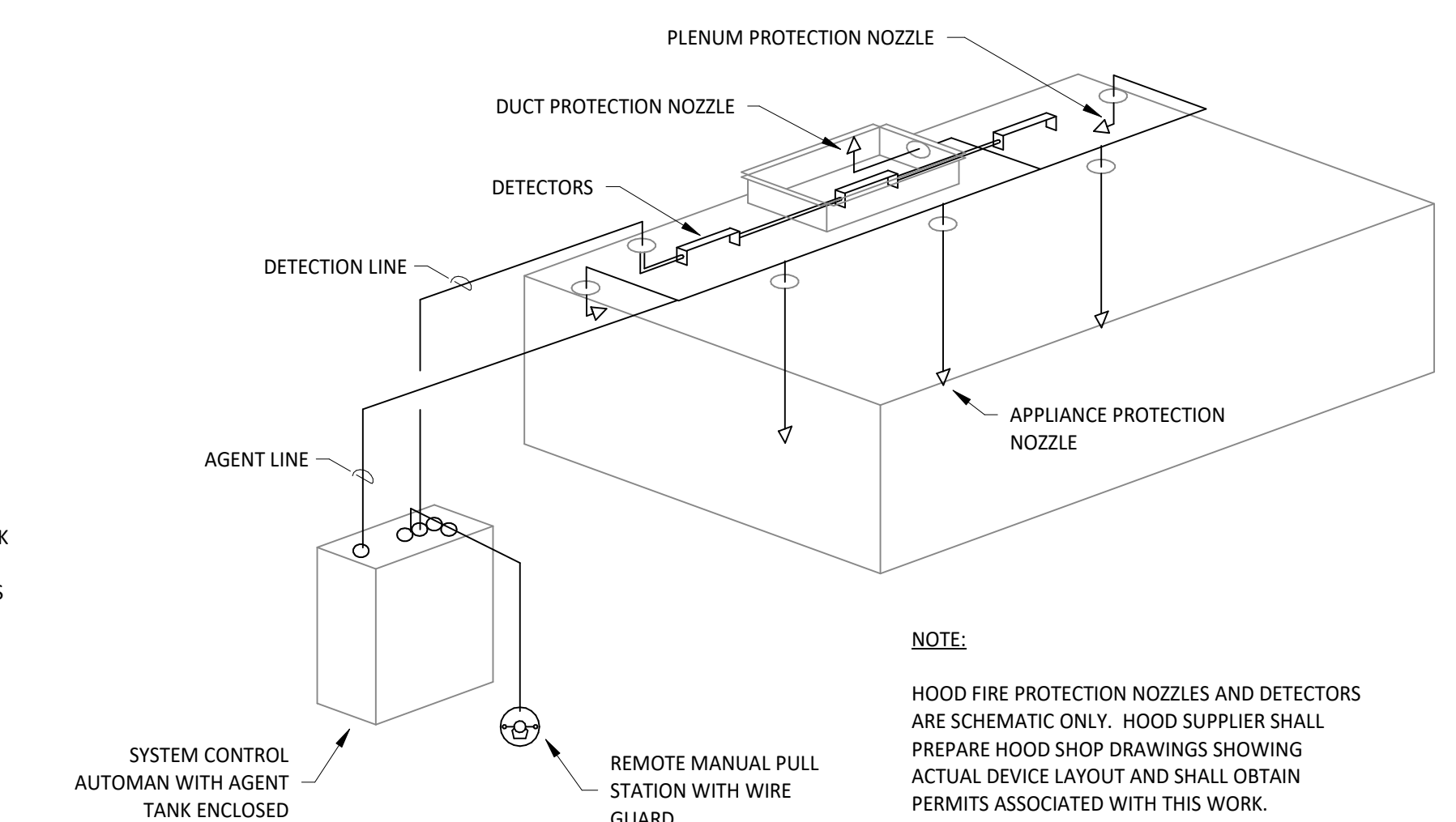
7
M700
DUCT SECTION AT HOOD
 NOT TO SCALE



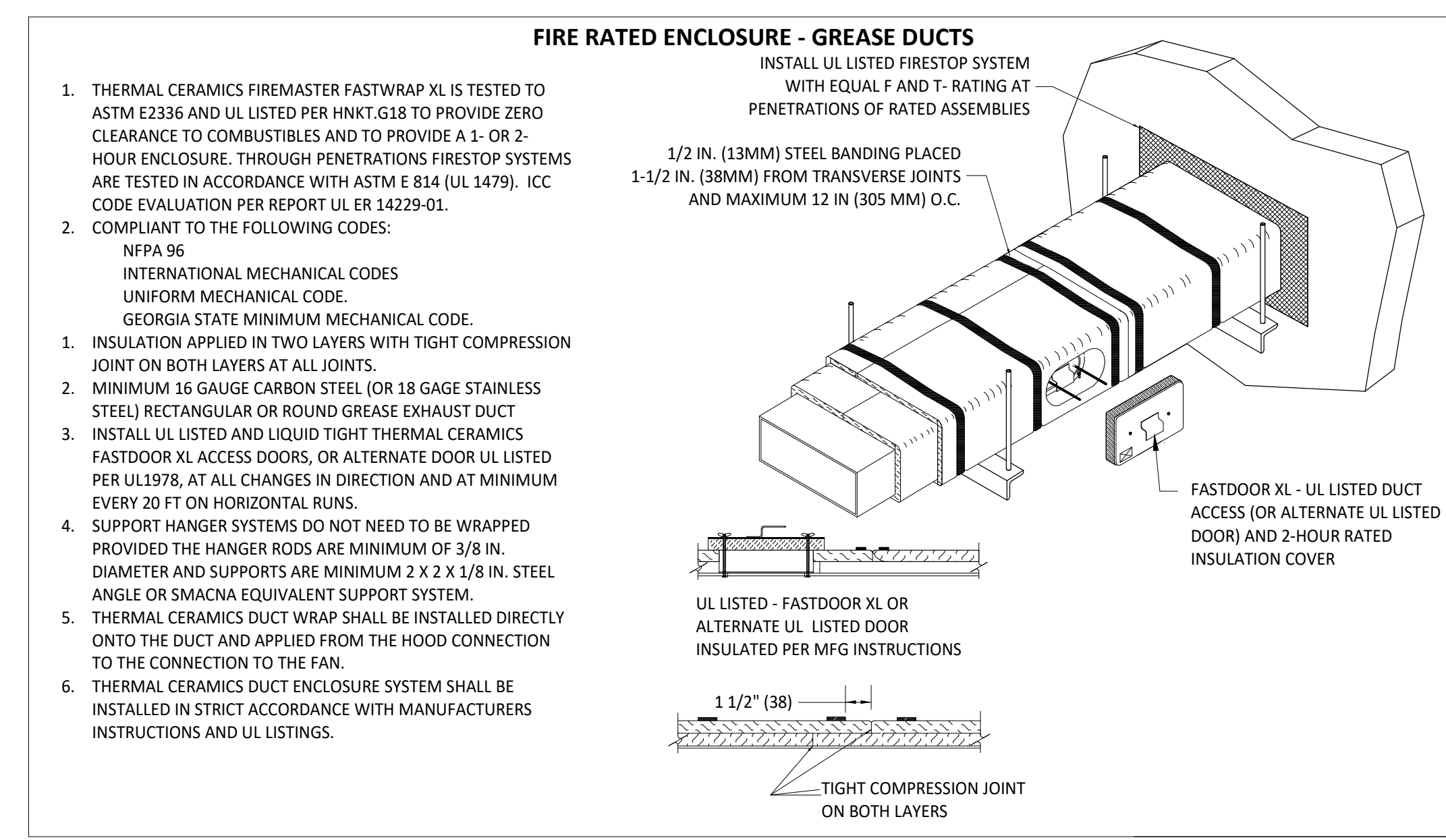
6
M700
UV AIR PURIFIER INSTALLATION
 NOT TO SCALE



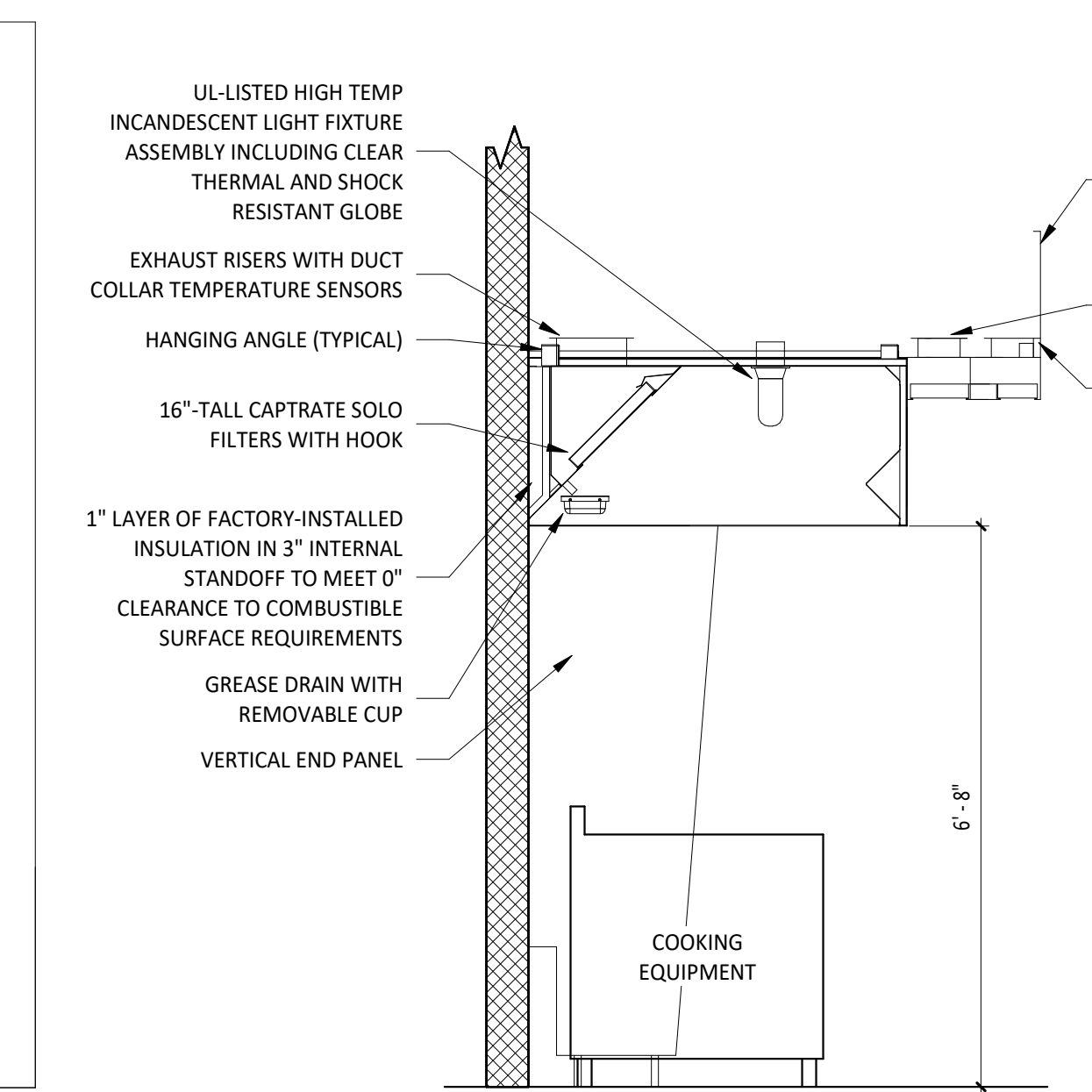
5
M700
GREASE EXHAUST FAN
 NOT TO SCALE



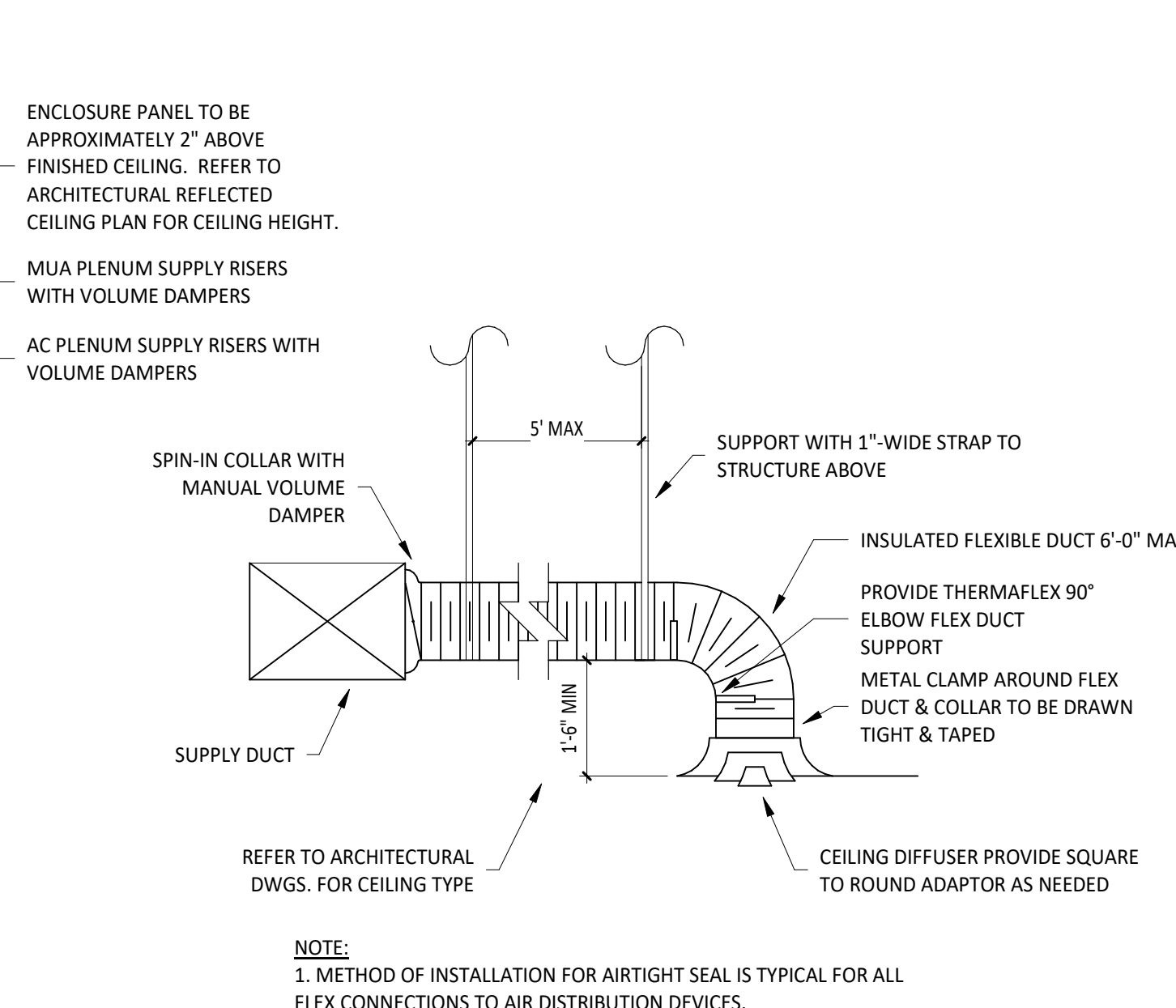
4
M700
FIRE SUPPRESSION SYSTEM SCHEMATIC
 NOT TO SCALE



3
M700
FIREMASTER DUCT WRAP - UL Hnkt-G18
 NOT TO SCALE



2
M700
HOOD SECTION VIEW
 NOT TO SCALE



1
M700
DIFFUSER CONNECTION
 NOT TO SCALE

