

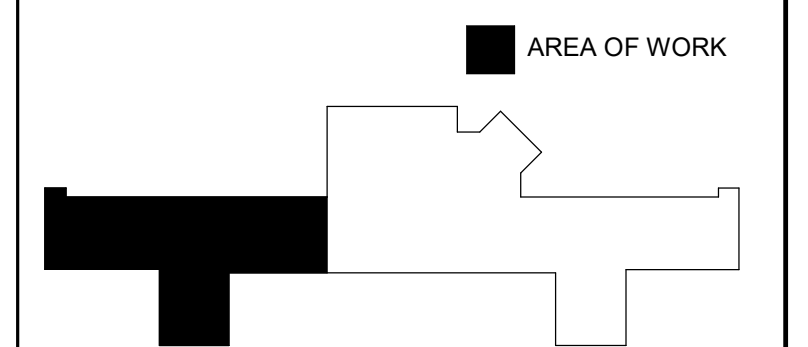
SHEET NOTES:

- A COORDINATE ALL WORK WITH THE GENERAL CONTRACTOR, OTHER TRADES AND THE COR TO MINIMIZE DISRUPTION OF AREAS OUTSIDE OF THE PROJECT LIMITS OF WORK
- B MAIN PIPE SIZES SHALL STAY THE SAME UNTIL A NEW SIZE IS INDICATED. RUNOUT SIZES ARE INDICATED IN SCHEDULES.

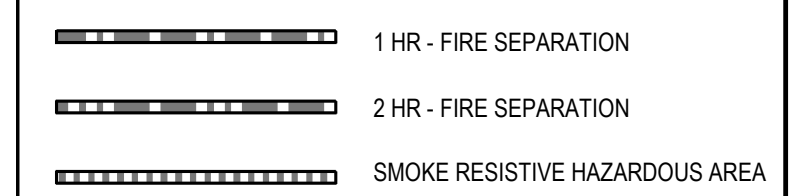
SHEET KEY NOTES:

- 1 1-1/2" BUTTERFLY ISOLATION VALVES LOCATED HERE.
- 2 CONDENSING UNIT LOCATED ON ROOF OF BUILDING 3E. LOCATE CONDENSING UNIT BETWEEN ACCESS COILS. COORDINATE EXACT LOCATION WITH COR.
- 3 SEE SHEET C001 FOR WORK SCOPE RELATED TO ALTERNATE DEDUCT 1.
- 4 ROUTE 3/4" CONDENSATE DRAIN TO OPEN HUB FITTING AT SANITARY PIPE AT 24" AFF. COORDINATE WITH DIVISION 22.
- 5 REBALANCE TERMINAL UNIT TO RECORDED PRE-TAB VALUES.
- 6 PROVIDE UNIT WITH CUT OFF SWITCH FOR OVERFLOW OF CONDENSATE.

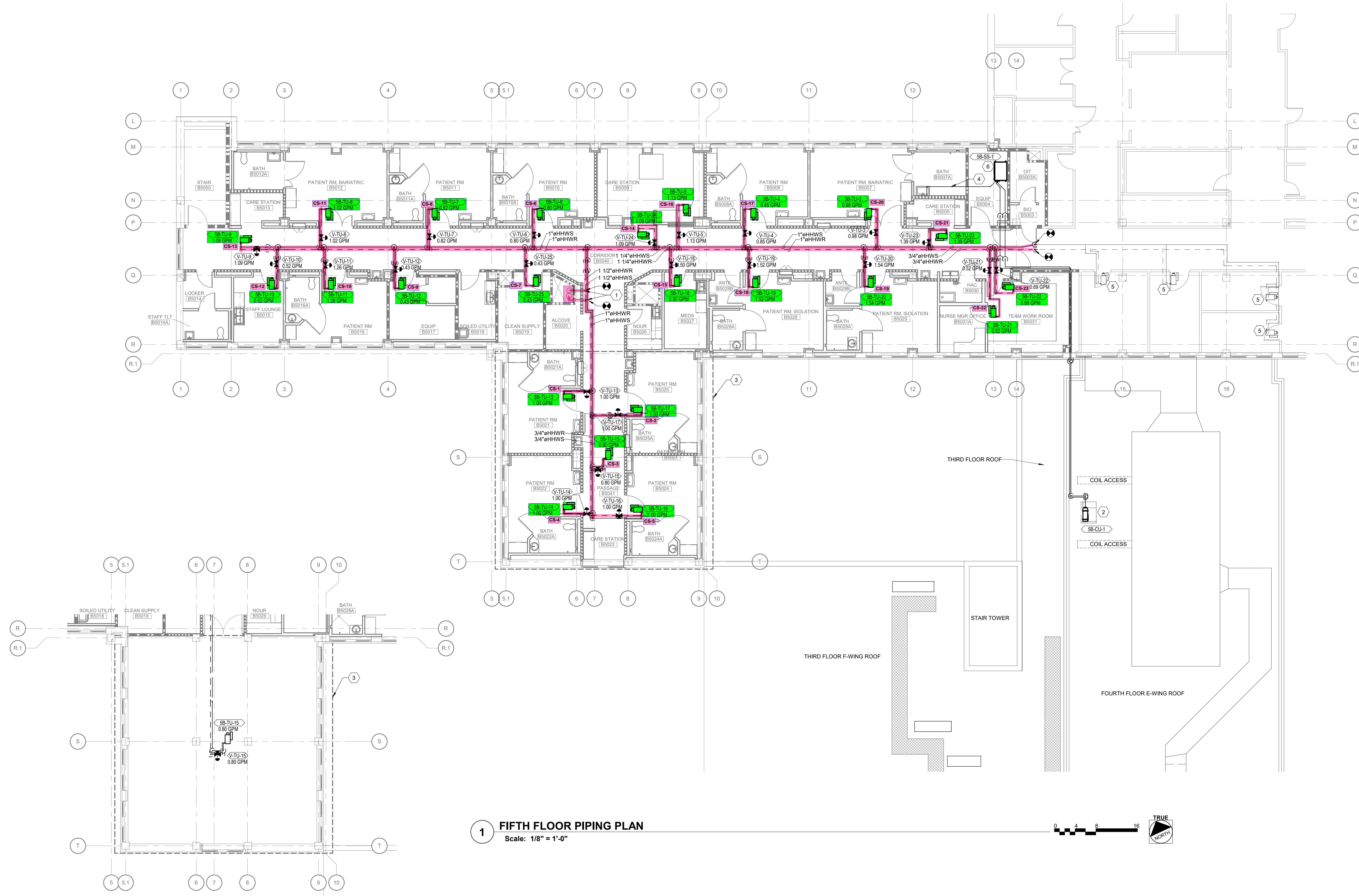
KEY PLAN
SCALE: NO SCALE



WALL RATING LEGEND



**FULLY SPRINKLERED
BID DOCUMENTS**



1 FIFTH FLOOR PIPING PLAN
Scale: 1/8" = 1'-0"

2 FIFTH FLOOR PIPING PLAN ALTERNATE DEDUCT 1
Scale: 1/8" = 1'-0"

CONSULTANTS:

PROJECT MANAGER

Headquarters
APOGEE Consulting Group, P.A.
1151 Kildaire Farm Road, Suite 120
Cary, North Carolina 27511
NC License #C-1848
www.acg-pa.com 919-858-7420

Office of
Construction
and Facilities
Management



Drawing Title

FIFTH FLOOR PIPING PLAN

Location

DURHAM VA MEDICAL CENTER
508 FULTON STREET
DURHAM, NC 27705

Project Title

IMPROVE INPATIENT
PRIVACY (RENOVATE 5B)

Approved

ANDREKA WATLINGTON
PROJECT ENGINEER

Date

6/28/2019

Checked

SPG

Drawn

SMH

VA PROJECT NUMBER

558-18-150

Building Number

1

Drawing Number

MP101

Dwg 5 of 9

ASI #2	03/02/2021
Revisions:	Date