

**Report By:**

National TAB  
1329 E. KEMPER ROAD  
SUITE 4210  
CINCINNATI, OH 45246



**Report: Deficiency Report**  
**Function: Test, Adjust, & Balance**  
**Date: 10/21/2024**  
**Completed By: National TAB**

**PROJECT**  
**10-21-24 CHIPOTLE #5173 NAVARRE, FL**

8333 MIKAJACK AVE

NAVARRE, FL 32566

**Client**

Chipotle Mexican Grill  
610 Newport Center Drive, Suite 1100  
Newport Beach, CA 92660

## Issue List

- Gas Valves Closed
- Hood Alarm - MUA Interlock 1
- MUA Door Obstruction
- RTUs - Construction Filters

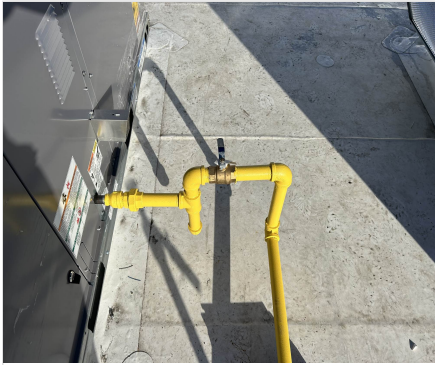


**10-21-24 CHIPOTLE #5173 NAVARRE, FL**

**Project Issue Information**

**Issue Name :** Gas Valves Closed  
**Description :** All rooftop gas valves are currently closed.  
**Created By :** National TAB                      **Assigned To :** National TAB - Will Turnbough  
**Status :** Open  
**Priority :** InfoOnly                                      **Asset Tag :** RTU 1  
**Originated Date :** 10/23/2024 - Mark Johnson - National TAB

Project Issue File Details



10/23/2024



## 10-21-24 CHIPOTLE #5173 NAVARRE, FL

### Project Issue Information

**Issue Name :** Hood Alarm - MUA Interlock 1  
**Description :** Hood exhaust fan and MUA will not run consistently due to the hood alarm "MUA Interlock 1." Hood powers down approximately 30 seconds after turning on. Cannot balance hood exhaust or MUA until resolved.  
**Created By :** National TAB                      **Assigned To :** National TAB - Will Turnbough  
**Status :** Open  
**Priority :** Urgent                                      **Asset Tag :** HD1  
**Originated Date :** 10/22/2024 - Mark Johnson - National TAB

#### Project Issue File Details



10/22/2024

#### Project Issue Response Details

- **10/23/2024 National TAB - Mark Johnson**
  - Alarm is still present, but hood exhaust now runs consistently and was successfully balanced. MUA unit remains not functional.



**10-21-24 CHIPOTLE #5173 NAVARRE, FL**

**Project Issue Information**

**Issue Name :** MUA Door Obstruction  
**Description :** The door to the MUA control panel cannot open fully due to location of gas piping. Access to MUA HMI is restricted.  
**Created By :** National TAB                      **Assigned To :** National TAB - Will Turnbough  
**Status :** Open  
**Priority :** Low                                      **Asset Tag :** MUA 1  
**Originated Date :** 10/22/2024 - Mark Johnson - National TAB

Project Issue File Details



10/22/2024



**10-21-24 CHIPOTLE #5173 NAVARRE, FL**

**Project Issue Information**

**Issue Name :** RTUs - Construction Filters  
**Description :** Both RTUs have temporary construction filters installed. Recommend installing required final filters.  
**Created By :** National TAB                      **Assigned To :** National TAB - Will Turnbough  
**Status :** Open  
**Priority :** Low                                      **Asset Tag :** RTU 1  
**Originated Date :** 10/22/2024 - Mark Johnson - National TAB

Project Issue File Details

