

Report By:

National TAB
1329 E. KEMPER ROAD
SUITE 4210
CINCINNATI, OH 45246



Report: Deficiency Report
Function: Test, Adjust, & Balance
Date: 05/19/2025
Completed By: National TAB

PROJECT

05-19-25 WAWA #8196 POTTSTOWN, PA

157 EVERGREEN RD

LOWER POTTS GROVE TOWNSHIP, PA 19464

Client

Wawa
260 West Baltimore Pike
Wawa, PA 19063

Issue List

- Diffuser 2-10 - Low Flow
- Diffuser 3-1 - Broken Damper
- Diffuser 3-2 - Low Flow
- EF 2 - Low Flow

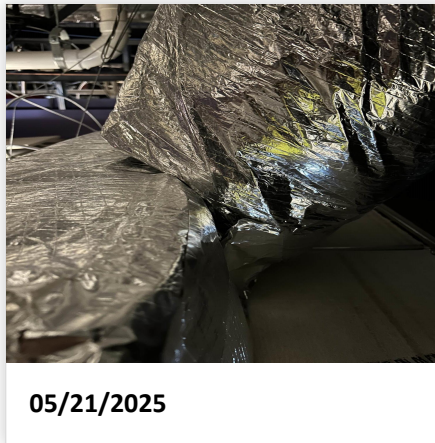
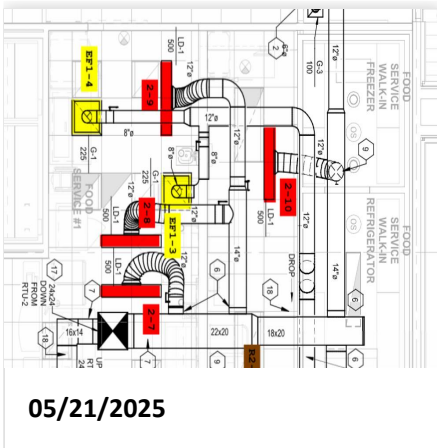


05-19-25 WAWA #8196 POTTSTOWN, PA

Project Issue Information

Issue Name : Diffuser 2-10 - Low Flow
Description : Diffuser 2-10 (food service) is currently at 343 CFM (69% design). Damper is fully open. Ductwork appears to be restricted at the diffuser takeoff. All other diffusers for RTU 2 are within design, and further balancing is not expected to improve this diffuser’s airflow to design. Recommend mechanical inspection.
Created By : National TAB **Assigned To :** National TAB - Will Turnbough
Status : Open
Priority : High **Asset Tag :**
Originated Date : 05/21/2025 - Mark Johnson - National TAB

Project Issue File Details



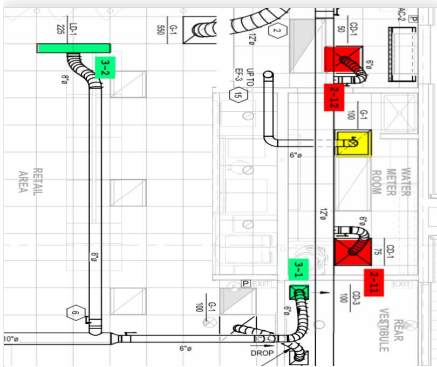


05-19-25 WAWA #8196 POTTSTOWN, PA

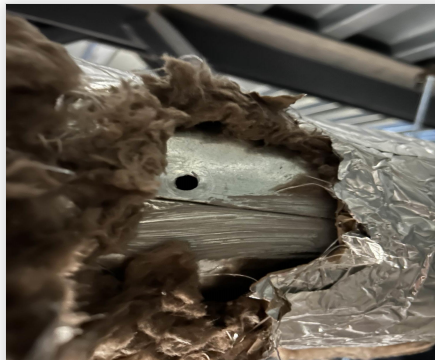
Project Issue Information

Issue Name : Diffuser 3-1 - Broken Damper
Description : The damper handle for diffuser 3-1 (rear vestibule) was broken while attempting to adjust. Damper blade is stuck and will not close sufficiently to adjusted the diffuser to design airflow. Diffuser is currently at 125 CFM (125% design) and cannot be adjusted further. Recommend damper repair.
Created By : National TAB **Assigned To :** National TAB - Will Turnbough
Status : Open
Priority : High **Asset Tag :**
Originated Date : 05/21/2025 - Mark Johnson - National TAB

Project Issue File Details



05/21/2025



05/21/2025

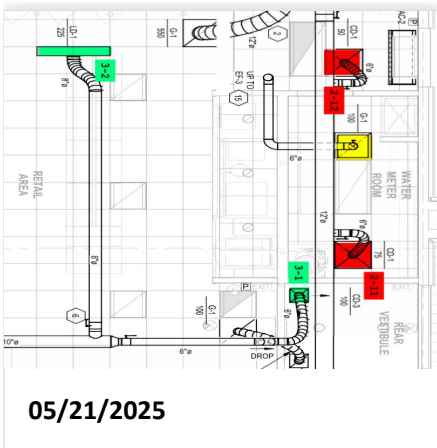


05-19-25 WAWA #8196 POTTSTOWN, PA

Project Issue Information

Issue Name : Diffuser 3-2 - Low Flow
Description : Diffuser 3-2 (retail area) is currently at 184 CFM (82% design). Damper is fully open and no ductwork deficiencies were noted. Not anticipated to cause comfort issues in the open retail space; however, it is expected that correcting the damper issue with diffuser 3-1 and closing it to design will improve this diffuser's airflow to be within design.
Created By : National TAB **Assigned To :** National TAB - Will Turnbough
Status : Open
Priority : Medium **Asset Tag :**
Originated Date : 05/21/2025 - Mark Johnson - National TAB

Project Issue File Details





05-19-25 WAWA #8196 POTTSTOWN, PA

Project Issue Information

Issue Name : EF 2 - Low Flow
Description : EF 2 (restrooms) is currently at a total of 115 CFM (46% design). Dampers are fully open, including backdraft damper. Mechanical inspection showed no ductwork deficiencies and confirmed the fan is running at max speed. Recommend further inspection of fan to determine possible causes.
Created By : National TAB **Assigned To :** National TAB - Will Turnbough
Status : Open
Priority : Urgent **Asset Tag :** EF2
Originated Date : 05/21/2025 - Mark Johnson - National TAB

Project Issue File Details

