

HOOD INFORMATION – JOB#4942696

HOOD NO	TAG	MODEL	MANUFACTURER	LENGTH	MAX COOKING TEMP	TYPE	APPLIANCE DUTY	DESIGN CFM/FT	TOTAL EXH CFM	EXHAUST PLENUM RISER(S)						HOOD CONSTRUCTION	HOOD CONFIG		
										WIDTH	LENG	HEIGHT	DIA	CFM	VEL		SP	END TO END	ROW
1	HD-1 (FRY)	3650 BD-2	CAPTIVEATRE	3' 6"	450 DEG	I	MEDIUM	171	600			4'	8"	600	1719	-0.568"	430 SS WHERE EXPOSED	ALONE	ALONE

HOOD INFORMATION

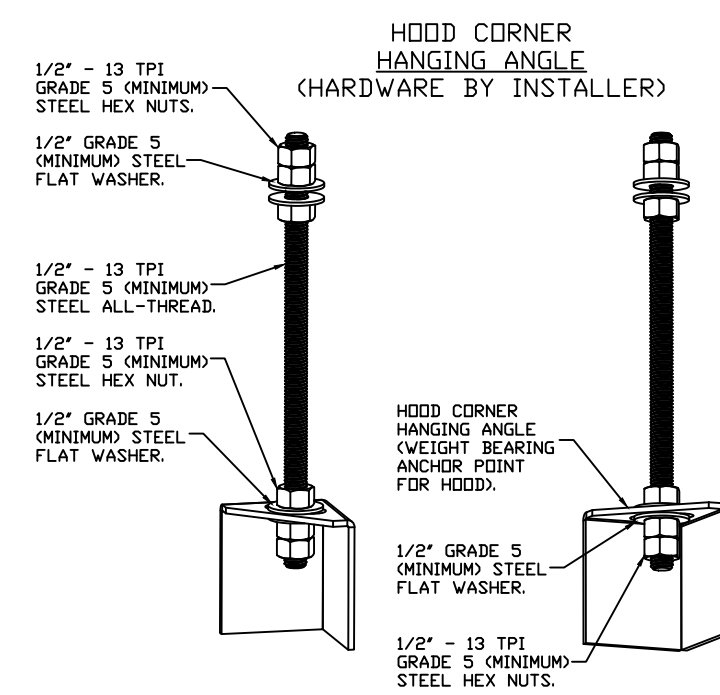
HOOD NO	TAG	FILTER(S)				LIGHT(S)				UTILITY CABINET(S)				FIRE SYSTEM PIPING	HOOD HANGING WEIGHT		
		TYPE	QTY	HEIGHT	LENGTH	EFFICIENCY @ 7 MICRONS	QTY	TYPE	WIRE GUARD	LOCATION	SIZE	TYPE	SIZE			ELECTRICAL MODEL #	SWITCHES QUANTITY
1	HD-1 (FRY)	CAPTRATE SOLD FILTER	2	16"	20"	85% SEE FILTER SPEC	2	L55 SERIES E26	ND	WALL MNT	12"x36"x24"			SC-110110MA	1 LIGHT 1 FAN	YES	222 LBS

HOOD OPTIONS

HOOD NO	TAG	OPTION
1	HD-1 (FRY)	FIELD WRAPPER 29.50' HIGH FRONT, LEFT, RIGHT. LEFT QUARTER END PANEL 26" TOP WIDTH, 0" BOTTOM WIDTH, 26" HIGH 430 SS. RIGHT QUARTER END PANEL 26" TOP WIDTH, 0" BOTTOM WIDTH, 26" HIGH 430 SS. INSULATION FOR TOP OF HOOD. INSULATION FOR BACK OF HOOD. SENSOR-CV.

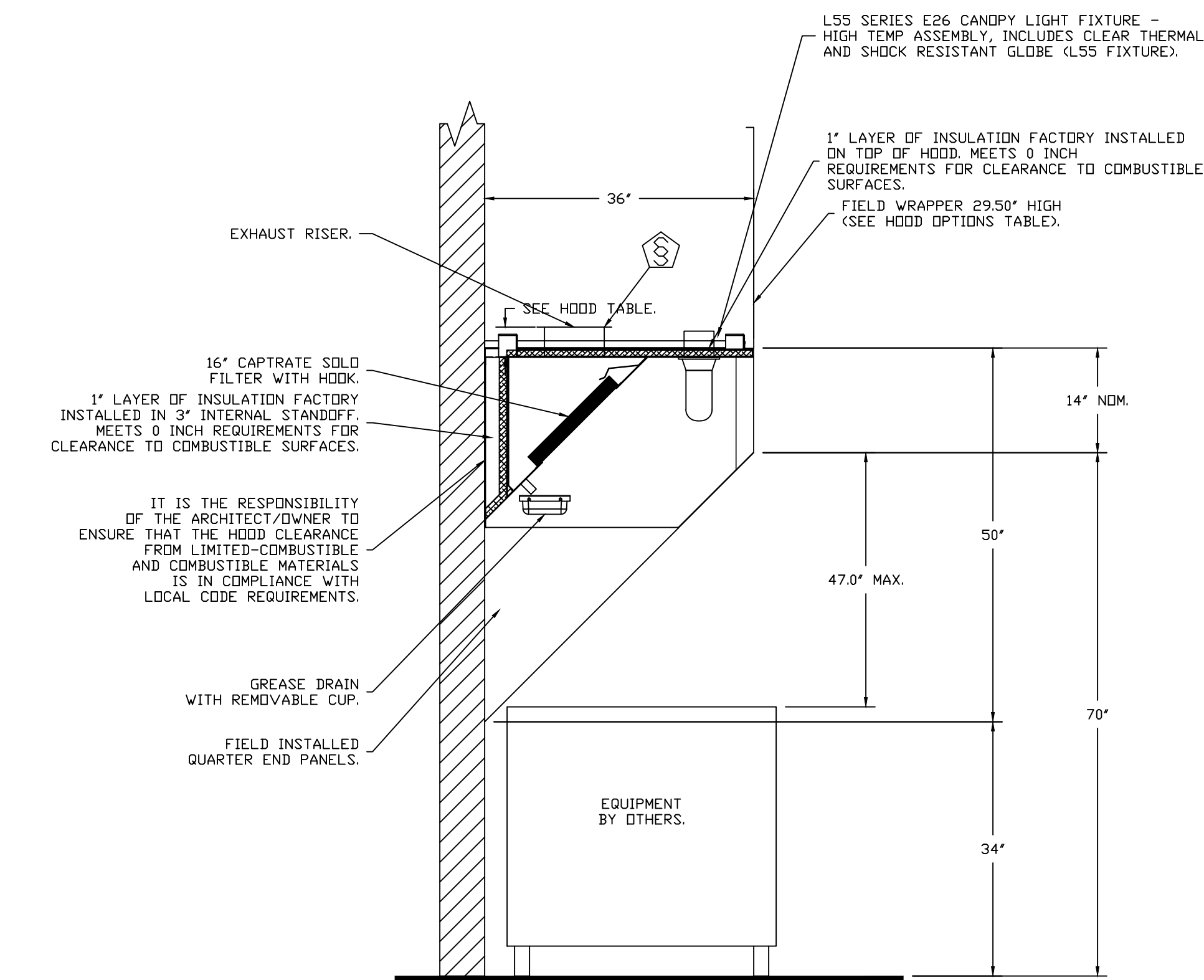
WALL-MOUNT UTILITY CABINET

HOOD NO	LOCATION	SIZE	UTILITY CABINET(S)				WEIGHT
			FIRE SYSTEM TYPE	SIZE	ELECTRICAL MODEL #	SWITCHES QUANTITY	
1	WALL MNT	12"x36"x24"			SC-110110MA	1 LIGHT 1 FAN	140 LBS

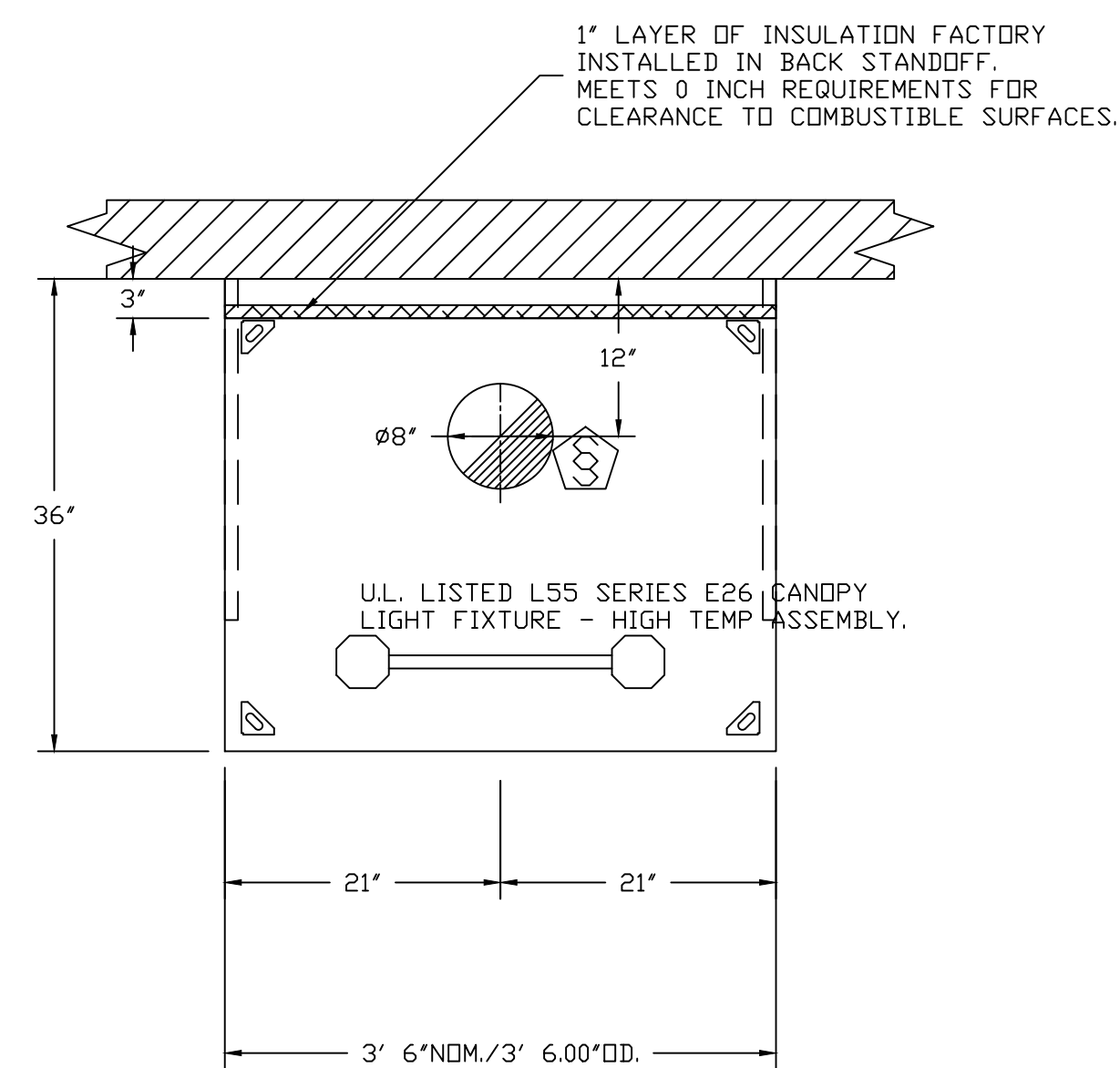


ASSEMBLY INSTRUCTIONS

HANGING ANGLE MUST BE SUPPORTED WITH 1/2" - 13 TPI GRADE 5 (MINIMUM) ALL-THREAD, SANDWICH HANGING ANGLES AND CEILING ANCHOR POINTS WITH 1/2" GRADE 5 (MINIMUM) STEEL FLAT WASHERS AND 1/2" - 13 TPI GRADE 5 (MINIMUM) HEX NUTS AS SHOWN. MUST USE DOUBLED HEX NUT CONFIGURATION BENEATH HOOD HANGING ANGLES AND ABOVE CEILING ANCHORS. MAINTAIN 1/4" OF EXPOSED THREADS BENEATH BOTTOM HEX NUT. TORQUE ALL HEX NUTS TO 57 FT-LBS.



**SECTION VIEW – MODEL 3650BD-2
HOOD – #1 (HD-1 (FRY))**



**PLAN VIEW – HOOD #1 (HD-1 (FRY))
3' 6.00" LONG 3650BD-2**

SPECIFICATION: CAPTRATE® GREASE-STOP® SOLD FILTER

THE CAPTRATE GREASE-STOP SOLD FILTER IS A SINGLE-STAGE FILTER FEATURING A UNIQUE S-BAFFLE DESIGN IN CONJUNCTION WITH A SLOTTED REAR BAFFLE DESIGN, TO DELIVER EXCEPTIONAL FILTRATION EFFICIENCY.

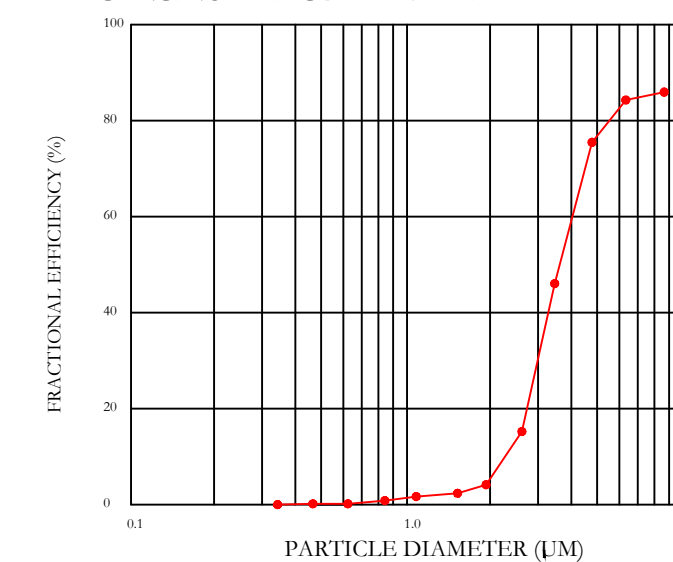
FILTER IS STAINLESS STEEL CONSTRUCTION, AND SIZED TO FIT INTO STANDARD 2-INCH DEEP HOOD CHANNEL(S).

UNITS SHALL INCLUDE STAINLESS STEEL HANDLES AND A FASTENING DEVICE TO SECURE THE TWO COMPONENTS WHEN ASSEMBLED.

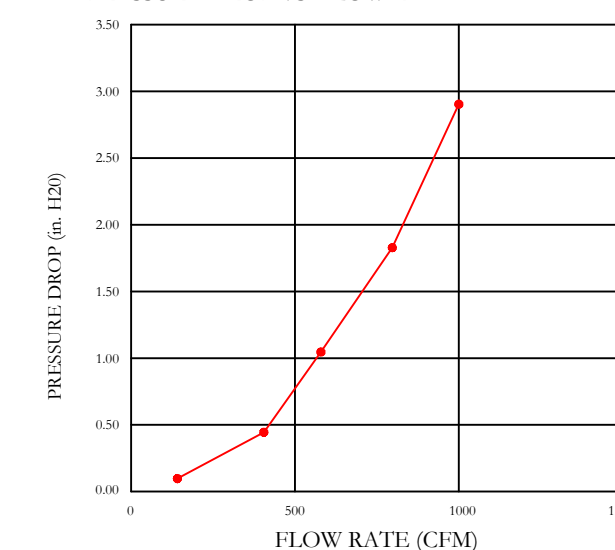
GREASE EXTRACTION EFFICIENCY PERFORMANCE SHALL REMOVE AT LEAST 75% OF GREASE PARTICLES FIVE MICRONS IN SIZE, AND 85% GREASE PARTICLES SEVEN MICRONS IN SIZE AND LARGER, WITH A CORRESPONDING PRESSURE DROP NOT TO EXCEED 1.0 INCHES OF WATER GAUGE.

THE CAPTRATE GREASE-STOP SOLD WAS TESTED TO ASTM STANDARD ASTM F2519-05. MANUFACTURER APPROVED FOR USE IN SOLID FUEL APPLICATIONS AS A SPARK ARRESTER.

EFFICIENCY VS. PARTICLE DIAMETER



PRESSURE DROP VS. FLOW RATE



CAPTRATE FILTERS ARE BUILT IN COMPLIANCE WITH:
NFPA #96.
NSF STANDARD #2.
UL STANDARD #1046.
INT. MECH. CODE (IMC).
ULC-S649.



CAPTIVE-AIRE HOODS ARE BUILT IN COMPLIANCE WITH UL 710 AND NFPA 96 AND ARE RECOGNIZED BY ONE OR MORE OF THE FOLLOWING:

ETL SANITATION LISTED
ETL LISTED FILE# 3054804-001

HOOD SYSTEM IS FABRICATED & DESIGNED PER UL-710 STANDARDS

REVISIONS

DESCRIPTION	DATE

CAPTIVE-AIRE
Air Solutions
1329 East Kemper Rd., Ste. 4210, Cincinnati, OH, 45246 PHONE: (513) 860-5555 EMAIL: reg12@captivateire.com

Skyline (Union, KY)
8675 U.S. Hwy 42,
Union, KY, 41091

DATE: 11/12/2021

DWG.#: 4942696

DRAWN BY: jcirilli

SCALE: 3/4" = 1'-0"

MASTER DRAWING

SHEET NO.
1

EXHAUST FAN INFORMATION – JOB#4942696

FAN UNIT NO	TAG	QTY	FAN UNIT MODEL #	MANUFACTURER	CFM	ESP	RPM	MOTOR ENCL	HP	BHP	PHASE	VOLT	FLA	DISCHARGE VELOCITY	WEIGHT (LBS)	SONES
1	KEF 1	1	DU50HFA	CAPTIVEAIRE	600	0.850	1299	TEAO-ECM	0.500	0.2200	1	115	6.3	228 FPM	82	12.1

FAN OPTIONS

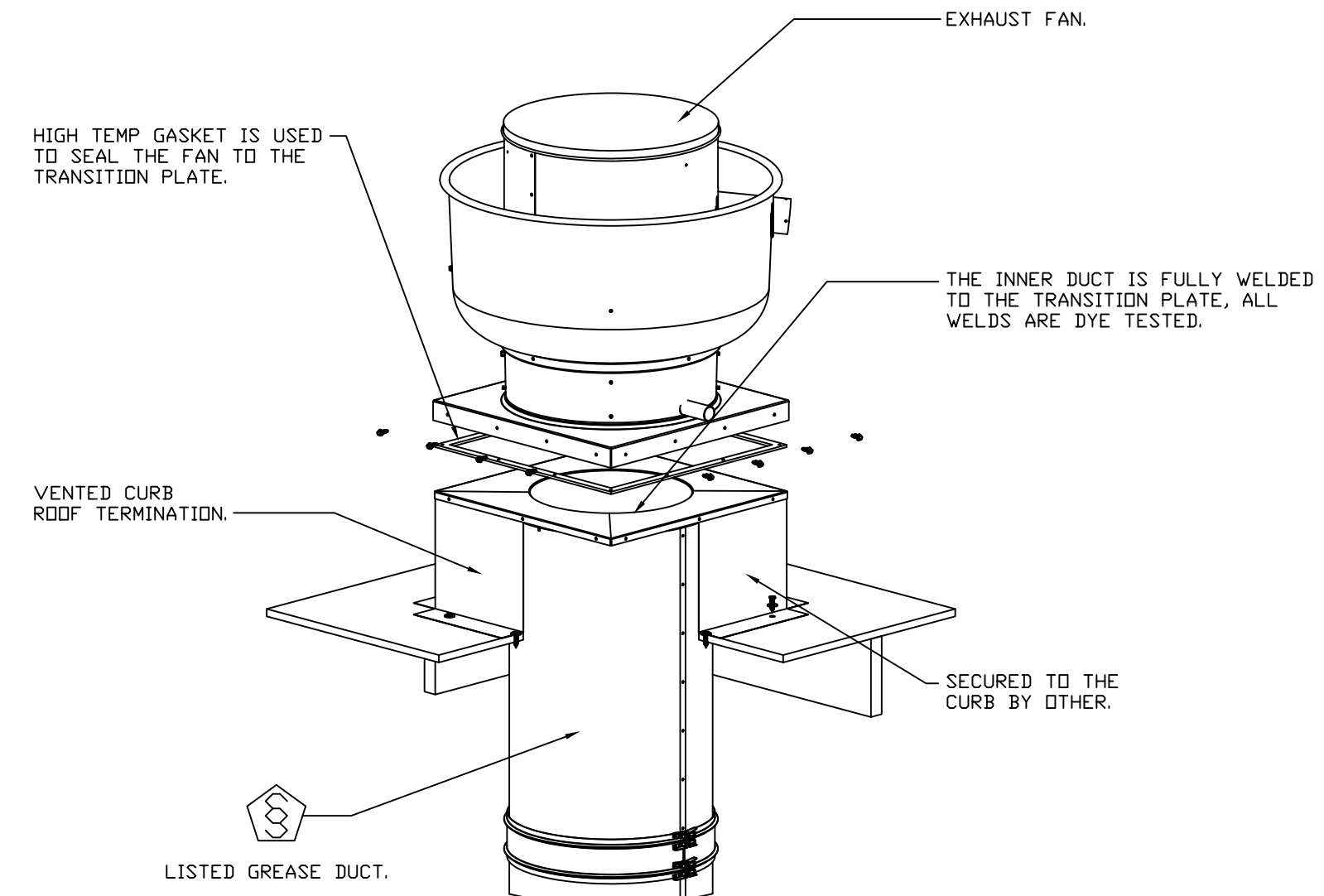
FAN UNIT NO	TAG	QTY	DESCRIPTION
1	KEF 1	1	GREASE BOX.
		1	FAN BASE CERAMIC SEAL – INSTALLED AT PLANT – FOR GREASE DUCTS.
		1	ECM WIRING PACKAGE – PWM SIGNAL FROM ECPM03 PREWIRE (TELCD MOTOR), CCW ROTATION.
		1	2 YEAR PARTS WARRANTY.

FAN ACCESSORIES

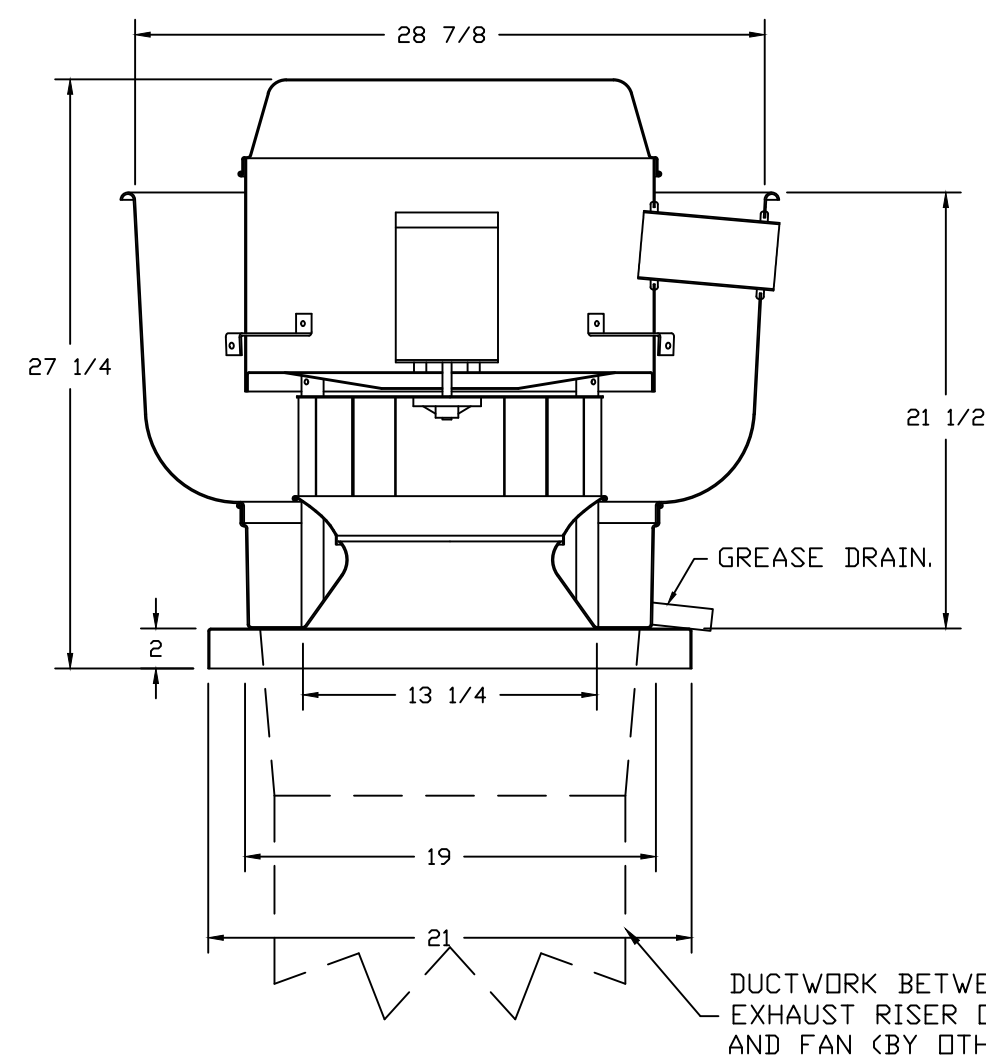
FAN UNIT NO	TAG	EXHAUST				SUPPLY			
		GREASE CUP	GRAVITY DAMPER	WALL MOUNT	SIDE DISCHARGE	GRAVITY DAMPER	MOTORIZED DAMPER	WALL MOUNT	
1	KEF 1	YES							

CURB ASSEMBLIES

NO	ON FAN	TAG	WEIGHT	ITEM	SIZE
1	# 1	KEF 1	31 LBS	CURB	19.500" W X 19.500" L X 20.000" H 7.000:12.000 PITCH ALONG LENGTH, RIGHT VENTED HINGED.



FAN #1 DU50HFA – EXHAUST FAN (KEF 1)



FEATURES:

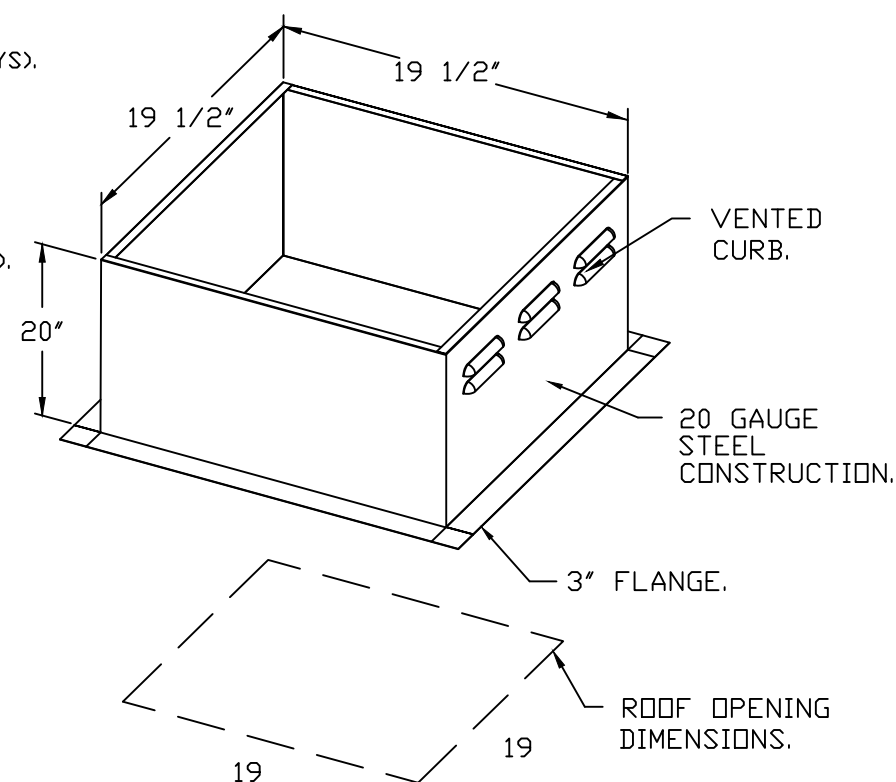
- DIRECT DRIVE CONSTRUCTION (NO BELTS/PULLEYS).
- ROOF MOUNTED FANS.
- RESTAURANT MODEL.
- UL705 AND UL762 AND ULC-S645
- VARIABLE SPEED CONTROL.
- INTERNAL WIRING.
- THERMAL OVERLOAD PROTECTION (SINGLE PHASE).
- HIGH HEAT OPERATION 300°F (149°C).
- GREASE CLASSIFICATION TESTING.
- NEMA 3R SAFETY DISCONNECT SWITCH.

NORMAL TEMPERATURE TEST
EXHAUST FAN MUST OPERATE CONTINUOUSLY WHILE EXHAUSTING AIR AT 300°F (149°C) UNTIL ALL FAN PARTS HAVE REACHED THERMAL EQUILIBRIUM, AND WITHOUT ANY DETERIORATING EFFECTS TO THE FAN WHICH WOULD CAUSE UNSAFE OPERATION.

ABNORMAL FLARE-UP TEST
EXHAUST FAN MUST OPERATE CONTINUOUSLY WHILE EXHAUSTING BURNING GREASE VAPORS AT 600°F (316°C) FOR A PERIOD OF 15 MINUTES WITHOUT THE FAN BECOMING DAMAGED TO ANY EXTENT THAT COULD CAUSE AN UNSAFE CONDITION.

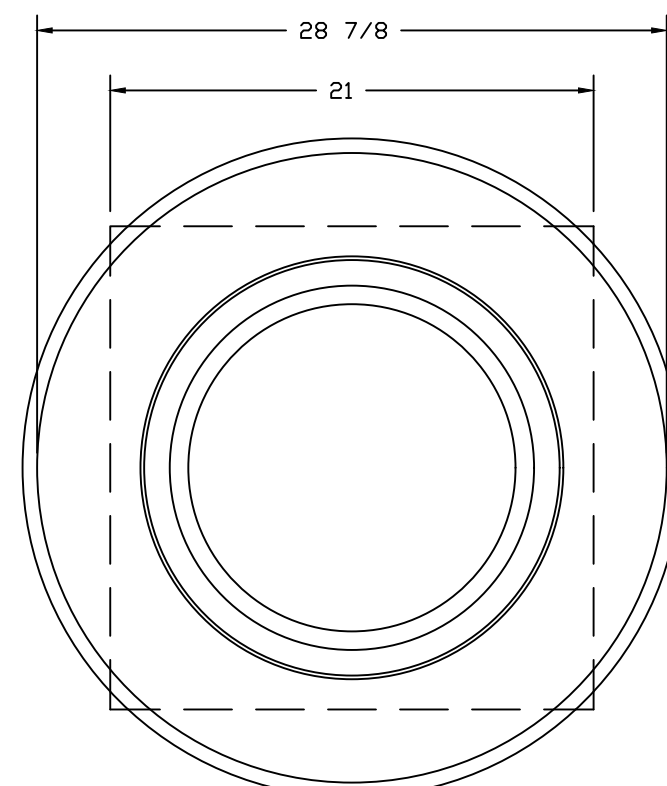
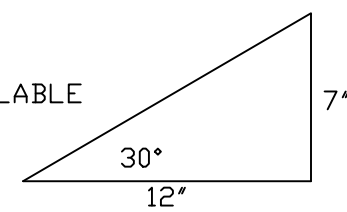
OPTIONS

GREASE BOX.
FAN BASE CERAMIC SEAL – INSTALLED AT PLANT – FOR GREASE DUCTS.
ECM WIRING PACKAGE – PWM SIGNAL FROM ECPM03 PREWIRE (TELCD MOTOR), CCW ROTATION.
2 YEAR PARTS WARRANTY.



PITCHED CURBS ARE AVAILABLE FOR PITCHED ROOFS.

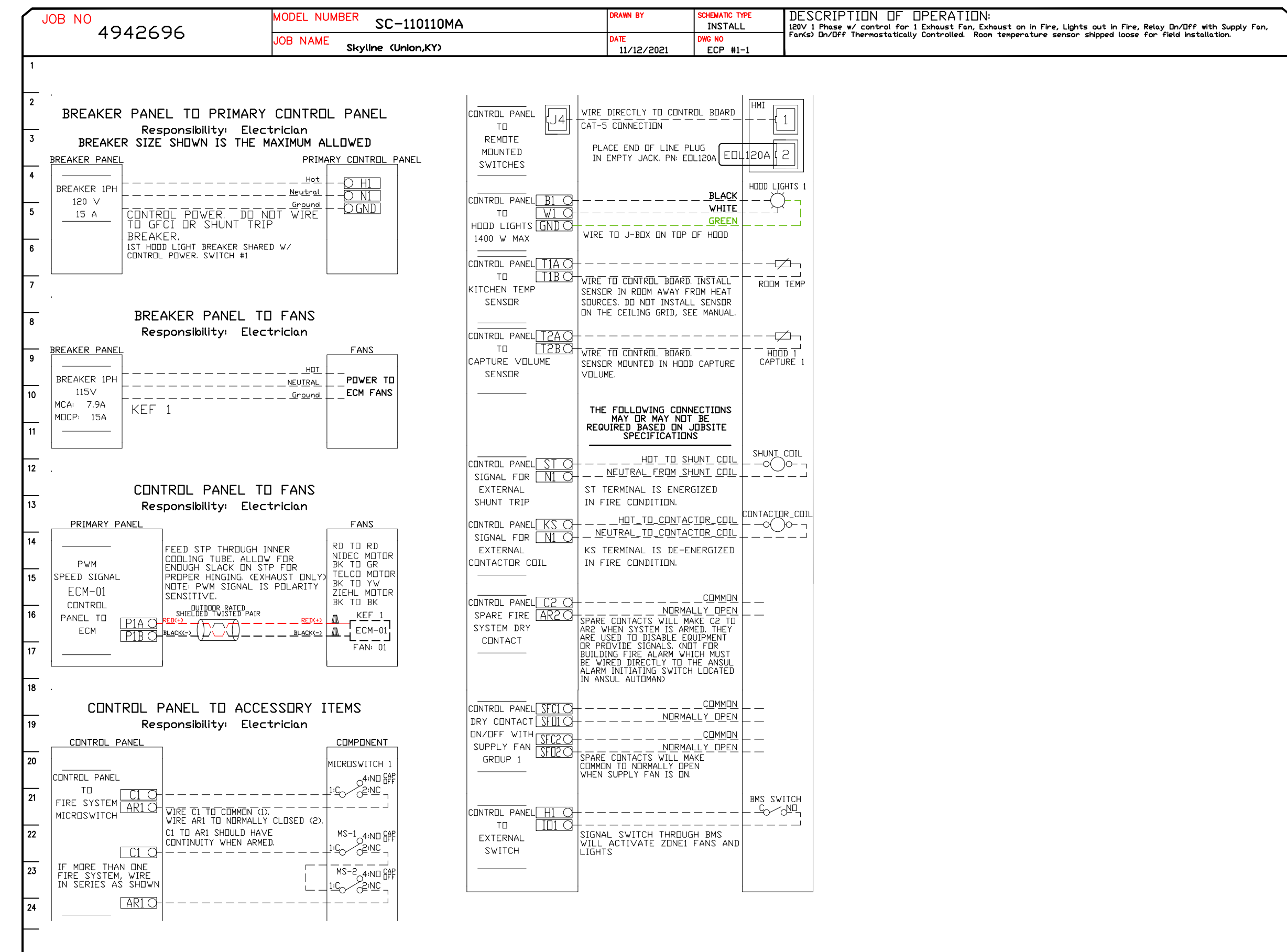
SPECIFY PITCH:
EXAMPLE: 7/12 PITCH = 30° SLOPE.



TOP VIEW

ELECTRICAL PACKAGE – JOB#4942696

NO	TAG	PACKAGE #	LOCATION	SWITCHES		OPTION	FANS CONTROLLED					
				LOCATION	QUANTITY		FAN TAG	TYPE	φ	HP	VOLT	FLA
1	ECP 1	SC-110110MA	WALL UTILITY CABINET RIGHT	02 – FACE MOUNT RIGHT SIDE OF HOOD HOOD # 1	1 LIGHT 1 FAN	SMART CONTROLS THERMOSTATIC CONTROL W/ RELAY ON/OFF WITH SUPPLY	KEF 1	EXHAUST	1	0.500	115	6.3



REVISIONS

DESCRIPTION	DATE

CAPTIVEAIRE

www.captiveaire.com

Air Solutions

1329 East Kemper Rd., Ste. 4210, Cincinnati, OH, 45246 PHONE: (513) 860-5555 EMAIL: reg12@captivair.com

Skyline (Union,KY)
8675 U.S. Hwy 42,
Union, KY, 41091

DATE: 11/12/2021

DWG.#: 4942696

DRAWN BY: jcirilli

SCALE: 3/4" = 1'-0"

MASTER DRAWING

SHEET NO. 2