

# Double T Balancing Company, LLC

5910 S. University Blvd.  
C-18, #354  
Greenwood Village, CO 80121  
303-660-0620  
NEBB Certified Testing & Balancing

## TEST, ADJUST & BALANCE REPORT

### DATE

9/24/2024

### PROJECT

1473 - King Soopers 147 - RTU-19  
Meridian & Woodman  
Falcon, CO 80831

### ARCHITECT

### DESIGN ENGINEER

### CONTRACTED BY

National Tab  
1329 E. Kemper Rd, STE4210  
Cincinnati, OH 45246

### TAB FIRM

Double T Balancing Company  
5910 S. University Blvd.  
Greenwood Village, CO 80121  
(303) 660-0620

# CERTIFICATION PAGE

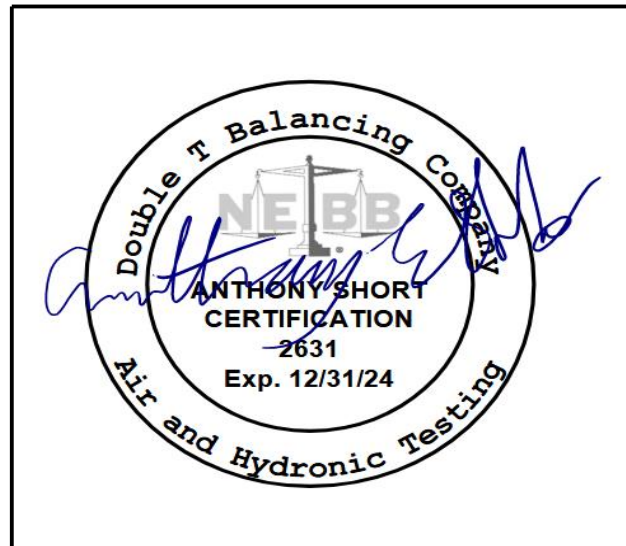
PROJECT NAME: 1473 - King Soopers 147 - RTU-19  
ADDRESS: Meridian & Woodman  
Falcon, CO 80831

The data presented in this report is a record of system measurements and final adjustments that have been obtained in accordance with the current edition of the NEBB Procedural Standard for Testing, Adjusting and Balancing of Environmental Systems. The measurements shown, and the information given, in this report are certified to be accurate and complete, at the time and date information was gathered. Any variances from design quantities, which exceed NEBB tolerances, are noted in the TAB report project summary.

NEBB TAB FIRM Double T Balancing Company  
REG NO. 2631 CERTIFIED BY Tony Short DATE 9/26/2024

SUBMITTED & CERTIFIED BY:

NEBB TAB FIRM Double T Balancing Company  
TAB PROFESSIONAL Owner  
REG NO. 2631  
CERTIFICATION EXPIRATION DATE 12/31/2024



## INSTRUMENT CALIBRATION LIST

INSTRUMENT	MANUFACTURER	MODEL / SERIAL #	CALIBRATION DATE	CALIBRATION DUE DATE
Flowhood Meter	Shortridge Instruments	ADM-860 / M97246	7/19/2024	7/19/2025
True RMS Meter	Fluke	325 / 44160325WS	7/16/2024	7/16/2025

# Certificate of Accredited and Traceable Calibration



Laerie, Inc. Issues this Certificate of Calibration to:

**Certificate Number: 57227.2518**

**Double T Balancing**

Customer Purchase Order:

609 W Littleton Blvd #212 Littleton, CO 80120

Calibration Type:

**CAL-2 NEBB**

For Asset: **M05784**

This calibration is traceable to the international system of units(SI), through National Institute of Standards and Technology (NIST).

Guard Banding and TUR Strategy, False-Accept Risk normal distribution and 95% confidence level typical with coverage factor of 2.

**Double T Balancing** : accepts and understands measurement uncertainties and risk assessment in all measurements involved in calibration.

Manufacturer	Model	Serial Number	Description	Calibrated	Int. MTh's	Re-Cal
Shortridge Instruments	ADM-860C	M05784	Airdata Multimeter Electronic Micromanometer	19-Jul-2024	12	<b>19-Jul-2025</b>

C-Procedure	Environmental	As-Received Physical Condition(s)
LAP NEBB 2024	73.4°F ±9°F, 40 to 65%RH	1) As-Received Annual maintenance performed, nominal exterior cosmetic wear, exterior cleaned where possible, initial inspection PASS.
Calibration Event:		

2FL: NEBB Compliant Calibration performed published data no adjustments required or performed.

**Primary References Traceability Number Used in Calibration**

REF	Projected Re-Cal.	Description	REF	Projected Re-Cal.	Description
5467	5/2025	Metrology Well			
10014	9/2024	Pressure Calibrator			

**Comments:**

Laboratory Altitude: 5,063.25 Ft.

56 Gateway Circle Berthoud, Colorado 80513  
877-532-7990 970-532-7990 www.laerie.com

**Procedure Executed by:**

JRN

**Veridical Review By:**

L. E. Armfield CEO/President

CALIBRATION LOCATION: Laerie Inc. Laboratory

TCC 2023-8A

UUC Manufacturer: Shortridge Instruments		Calibration Event: <b>FOUND-LEFT</b>		Calibration Performance Report for:	
Model: ADM-860C		Description: Micromanometer & Probe		<b>Double T Balancing</b>	
S/N: M05784	ID: <b>M05784/M12386-TP</b>	Eng. / Metrologist:			
CAL-DATE: 19-Jul-2024	CAL-DUE: 19-Jul-2025	JRN			

Calibration Performed:	% of range	REF inH <sub>2</sub> O	Min inH <sub>2</sub> O	UUC Ind inH <sub>2</sub> O	Max inH <sub>2</sub> O	Compilation			
Pressure Accuracy ±2% R ± .001 inH <sub>2</sub> O	0.00	0.000	-0.001	0.0000	0.001	Calibrated			
	20.00	10.000	9.799	9.999	10.201	Calibrated			
	50.00	25.000	24.499	25.020	25.501	Calibrated			
	80.00	40.000	39.199	40.060	40.801	Calibrated			

Calibration Performed:	% of range	REF	MIN	UUC	MAX	Compilation			
Temperature Accuracy 0 to 200 °F ±.5 % R + 2F	20.00	40.0000 °F	37.80 °F	39.7 °F	42.20 °F	Calibrated			
	50.00	100.0000 °F	97.50 °F	99.5 °F	102.50 °F	Calibrated			
	80.00	160.0000 °F	157.20 °F	159.5 °F	162.80 °F	Calibrated			

Calibration Performed:		REF	MIN	UUC	MAX	Compilation			
Absolute Pressure ±2% R ± .1 inHg		25.100 inHg	24.498 inHg	25.089 inHg	25.702 inHg	Calibrated			
	Absolute pressure is not specified by NEBB. This information is for information only								

Thank you for using **LAERIE Calibration & Metrology Service**

56 Gateway Circle  
 Berthoud, Colorado 80513  
 Office: 970-532-7990

TF: 1-877-532-7990 Fax: 970-532-7992

[www.laerie.com](http://www.laerie.com)

This report shall not be reproduced except in full and with the written approval of Laerie Inc.

**That is All.**



## Calibration & Metrology Service

Calibration Event: **FOUND-LEFT**

Manufacturer Model	Fluke 325 AC/DC True RMS Clamp
Description:	Meter

S/N:	44160325WS	r0.52
ID:	44160325WS	Display, Backlight, Button Tests Yea
PO#		
CAL-DATE:	<b>16-Jul-2024</b>	
CAL-DUE:	<b>16-Jul-2025</b>	

Environmental: 73.4°F±(9°F) RH(40 To 65%)

Eng. / Metrologist: LEA

Calibration Performance Report for:
<b>Double T Balancing</b>

	Reference AC Amps				Reference DC Amps			
Reference Current	<b>0.2000 A</b>	<b>0.6000 A</b>	<b>2.0000 A</b>	<b>6.0000 A</b>	<b>6.0000 A</b>	<b>2.0000 A</b>	<b>0.6000</b>	<b>0.2000</b>
<b>UUC Range</b>	40 AAC	40 AAC	400 AAC	400 AAC	400 ADC	400 ADC	40 ADC	40 ADC
Reference Hz	<b>50.00 Hz</b>	<b>50.00 Hz</b>	<b>50.00 Hz</b>	<b>50.00 Hz</b>				
<b>UUC MEASURED Amp →</b>	<b>10.02 A</b>	<b>30.12 A</b>	<b>100.4 A</b>	<b>301.8 A</b>	<b>302.1 A</b>	<b>100.7 A</b>	<b>30.20 A</b>	<b>10.07 A</b>
Use 5500A/COIL 50 Turn Coil	δ of Reference							
	0.02 A	0.12 A	0.40 A	1.8 A	2.1 A	0.7 A	0.2 A	0.07 A
	Compilation							
	<b>Calibrated</b>	<b>Calibrated</b>	<b>Calibrated</b>	<b>Calibrated</b>	<b>Calibrated</b>	<b>Calibrated</b>	<b>Calibrated</b>	<b>Calibrated</b>
Limits	±0.25 A	±0.65 A	±2.0 A	±5.0 A	±6.5 A	±2.5 A	±6.5 A	±0.65 A

Calibration Description:	Reference Output to UUC Temperature			
	<b>-5.00 °C</b>	<b>0.00 °C</b>	<b>100.00 °C</b>	<b>400.00 °C</b>
Range	Auto			
<b>UUC MEASURED VALUES HERE →</b>	<b>-4.3 °C</b>	<b>0.6 °C</b>	<b>100.5 °C</b>	<b>400.3 °C</b>
	δ of Reference			
	0.7 °C	0.6 °C	0.5 °C	0.3 °C
	Compilation			
	<b>Calibrated</b>	<b>Calibrated</b>	<b>Calibrated</b>	<b>Calibrated</b>
Limits	±0.8 °C	±0.8 °C	±1.8 °C	±4.8 °C


Toroidal Current
10.00 AAC
30.00 AAC
100.00 AAC
300.00 AAC
300.00 ADC
100.00 ADC
30.00 ADC
10.00 ADC

Calibration	<b>Reference Output DCV</b>
-------------	-----------------------------

## Calibration & Metrology Service

Description:	10.000 V	500.000 V	-500.000 V			
Range	Auto					
UUC MEASURED VALUES HERE →	10.0 V	500.1 V	-500.1 V			
	δ of Reference					
	0.00 V	0.10 V	-0.10 V			
	Compilation					
	Calibrated	Calibrated	Calibrated			
Limits	±0.6 V	±5.5 V	±5.5 V			

Reference Output ACV and Frequency							
Calibration Description:	10.0 V	500.0 V	500.0 V		0.004 A	0.200 A	0.200 A
Range	Auto						
Hz	50.00 Hz	50.00 Hz	400.00 Hz		10.00 Hz	60.00 Hz	500.00 Hz
UUC MEASURED VALUES HERE →	10.0 V	499.9 V	500.0 V		10.0 Hz	60.0 Hz	500.0 Hz
	δ of Reference						
	0.0 V	-0.1 V	0.0 V		0.0 Hz	0.0 Hz	0.0 Hz
	Compilation						
	Calibrated	Calibrated	Calibrated		Calibrated	Calibrated	Calibrated
Limits	±0.7 V	±8.0 V	±8.0 V		±0.3 Hz	±0.4 Hz	±1.5 Hz

Reference Output Ohm Simulated							
Calibration Description:	0.0 Ω	111.0 Ω	0.0000 Ω	100.0000 Ω	350.000 Ω	3500.000 Ω	35.00 kΩ
Range	Continuity		400.0 Ω	400.0 Ω	400.0 Ω	4000.0 Ω	40000.0 Ω
UUC MEASURED VALUES HERE →	 Alarm ON	OFF	0.0 Ω	99.9 Ω	349.9 Ω	3500 Ω	35.00 kΩ
	δ of Reference						
			0.0 Ω	-0.1 Ω	-0.1 Ω	0 Ω	0.00 Ω
	Compilation						
			Calibrated	Calibrated	Calibrated	Calibrated	Calibrated
Limits			±0.5 Ω	±0.6 Ω	±3.5 Ω	±15 Ω	±35 Ω

Reference Output Capacitance Simulated							
Calibration Description:	10.00 μF	500.00 μF	900.00 μF				

## Calibration & Metrology Service

Range	100.0 $\mu$ F	1000 $\mu$ F	1000 $\mu$ F				
UUC MEASURED VALUES HERE →	10.0 $\mu$ F	500 $\mu$ F	899 $\mu$ F				
	$\delta$ of Reference						
	0.0 $\mu$ F	0 $\mu$ F	-1 $\mu$ F				
	Compilation						
	Calibrated	Calibrated	Calibrated				
Limits	$\pm$ 0.5 $\mu$ F	$\pm$ 9 $\mu$ F	$\pm$ 13 $\mu$ F				

- FOUND-LEFT → Calibration Event - Data from UUC, no adjustment performed.
- AS-FOUND → Calibration Event - Data from UUC, Pre-Adjustment.
- AS-LEFT → Calibration Event - Data from UUC, Post-Adjustment.

*This report shall not be reproduced except in full and with the written approval of Laerie Inc.*

**That is All**

## ABBREVIATIONS LIST

### ABBREVIATIONS

AHU	AIR HANDLING UNIT	N.G.	NOT GIVEN
AMP	AMPERAGE	NF	NO FLOW
AFMS	AIR FLOW MONITORING STATION	NPSH	NET POSITIVE SUCTION HEAD
ATM	ATMOSPHERE	NPSHA	NPSH AVAILABLE
BD	BALANCING DAMPER	NPSHR	NPSH REQUIRED
BHP	BRAKE HORSE POWER	OA	OUTSIDE AIR
BTU	BRITISH THERMAL UNIT	OBD	OPPOSED BLADE DAMPER
BTUh	BTU PER HOUR	OED	OPEN ENDED DUCT
BV	BALANCING VALVE	P	PUMP
CF	CORRECTION FACTOR (Ak)	PD	PRESSURE DROP
CFLA	CORRECTED FULL LOAD AMPS	PH	PHASE
CFM	CUBIC FEET PER MINUTE	PSI	POUNDS PER SQUARE INCH
CV	CONSTANT VOLUME	PSIA	PSI ABSOLUTE
DB	DRY BULB	PSIG	PSI GAUGE
D.D.	DIRECT DRIVE	RA	RETURN AIR
DFC	DAMPER FULLY CLOSED	RAF	RETURN AIR FAN
DWO	DAMPER WIDE OPEN	RG	RETURN GRILLE
EF	EXHAUST FAN	RPM	ROTATIONS PER MINUTE
EG	EXHAUST GRILLE	RR	RETURN REGISTER
ER	EXHAUST REGISTER	SA	SUPPLY AIR
ESP	EXTERNAL STATIC PRESSURE	SD	SPLITTER DAMPER
EA	EXHAUST AIR	SG	SUPPLY GRILLE
F	FAN	SP	STATIC PRESSURE
FD	FIRE DAMPER	SR	SUPPLY REGISTER
FLA	FULL LOAD AMPS	TB	TERMINAL BOX
FPM	FEET PER MINUTE	TD	TEMPERATURE DIFFERENTIAL
GPM	GALLONS PER MINUTE	TDH	TOTAL DYNAMIC HEAD
LS	LINEAR SLOT	TP	THERMALLY PROTECTED
MBH	1000 BTU PER HOUR	TSP	TOTAL STATIC PRESSURE
MVD	MANUAL VOLUME DAMPER	WB	WET BULB
N/A	NOT APPLICABLE	VAV	VARIABLE AIR VOLUME
N/ACC	NO REASONABLE ACCESS	VD	VOLUME DAMPER
NDI	NO DAMPER INSTALLED	VEL	VELOCITY

## TABLE OF CONTENTS

PROJECT: King Soopers 147 - RTU-19

Cover-1	1
Certification Page 1-23	2
Instrument Calibration Li-20	3-9
Abbreviations-22	10
Table of Contents	11
Project Summary-21	12
RTU-19	13
RTU-19 - Supply	14
RTU-19 - Outside Air	15
RTU-19 - Statics	16
King Soopers 147 RTU 19 M Sheet	17



## AIR APPARATUS TEST REPORT

PROJECT NAME:	1473 - King Soopers 147 - RTU-19						
EQUIPMENT / SYSTEM:	RTU-19						
<b>UNIT INFORMATION</b>							
		<b>DESIGN</b>			<b>ACTUAL</b>		
MANUFACTURER		Lennox			Lennox		
MODEL #		LGM092U4E			LGM074U4EQ1G		
SERIAL #					5623A02612		
LOCATION / SERVICE					Curb Side Pick Up		
<b>FAN INFORMATION</b>							
		<b>DESIGN</b>			<b>ACTUAL</b>		
Total Airflow (CFM)		2,400			2,323		
Total of Terminals (CFM)		2,400			2,323		
Return Airflow (CFM)		2,085			2,009		
Outside Airflow (CFM)		315			314		
Total Static Pressure (in. w.g.)					0.85		
External Static Pressure (in. w.g.)		0.15			0.70		
Fan Speed (RPM / Setpoint)					D.D. / 92% Fan Speed		
VFD Speed (Hz)					n/a		
OA Damper Postion (% Open)					15%		
<b>MOTOR INFORMATION</b>							
		<b>DESIGN / NAMEPLATE</b>			<b>ACTUAL</b>		
Manufacturer / Frame - Nameplate					Ebmpapst / n/g		
Horse Power (HP)		3.75			1700w		
Brake Horse Power (BHP)					1.27		
Volts	Phase	480	3	491	492	493	
Full Load Amps		2.40			1.46	1.61	1.56
Corrected Nameplate Amps		-			2.34		
Motor Speed (RPM / Setting)					n/g		
Service Factor		-			n/g		
Current Overload Size/Setting		-			D.D. / 92% Fan Speed		
<b>FILTER INFORMATION</b>							
<b>DESIGN (MERV Rating)</b>		<b>BANK #1 Style/Size(Qty)</b>			<b>BANK #2 Style/Size(Qty)</b>		
Merv 8		(4) 20x20x2					

Technician(s): \_\_\_\_\_ Curtis Tunink \_\_\_\_\_ Date: \_\_\_\_\_ 9/24/2024 \_\_\_\_\_



NEBB CERTIFIED TESTING & BALANCING

## RECTANGLE DUCT TRAVERSE TEST REPORT

PROJECT NAME:		1473 - King Soopers 147 - RTU-19											
EQUIPMENT / SYSTEM:		RTU-19 - Outside Air											
<b>DUCT TRAVERSE INFORMATION</b>													
Duct Zone:		RTU-19				Required CFM:		315		Required FPM:		116	
Duct Size:		28	X	14	WxH"	Area:		2.72		Static Pressure:			
Instrument:		Velgrid		Corr Factor	1	Altitude:		5280 FT		Temperature:		n/a	
<b>DUCT TRAVERSE MEASUREMENTS</b>													
Velocity Total (FPM):		462			Velocity Average (FPM):			116			Actual Airflow (CFM):		<b>314</b>
POS	1	2	3	4	5	6	7	8	9	10	11	Distance Height	
1	128	121										3.5	
2	98	115										10.5	
3												17.5	
4												24.5	
5												31.5	
6												38.5	
7												45.5	
8												52.5	
9												59.5	
10												66.5	
11												73.5	
Distance Width	7.0	21.0	35.0	49.0	63.0	77.0	91.0	105.0	119.0	133.0	147.0	Inches	
Totals	226	236	0	0	0	0	0	0	0	0	0		

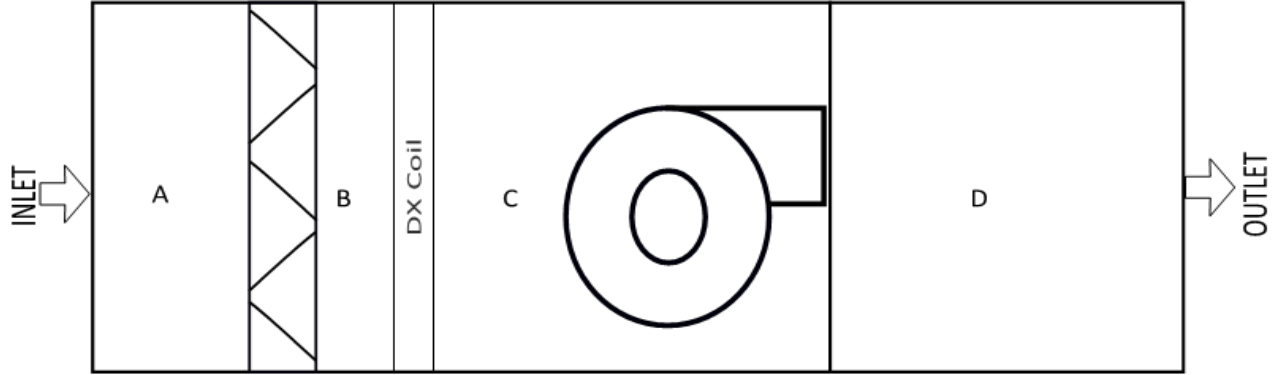
Comments: \_\_\_\_\_  
 \_\_\_\_\_  
 \_\_\_\_\_  
 \_\_\_\_\_

Technician(s): Curtis Tunink Date: 9/24/2024

NEBB CERTIFIED TESTING & BALANCING

### STATIC PRESSURE PROFILE

PROJECT NAME:	1473 - King Soopers 147 - RTU-19
EQUIPMENT / SYSTEM:	RTU-19 - Statics
<b>SYSTEM INFORMATION</b>	
Static Pressure Profile Setup:	FilCoilFanDis
Design Airflow (CFM)	2400
Measured Airflow (CFM)	2323

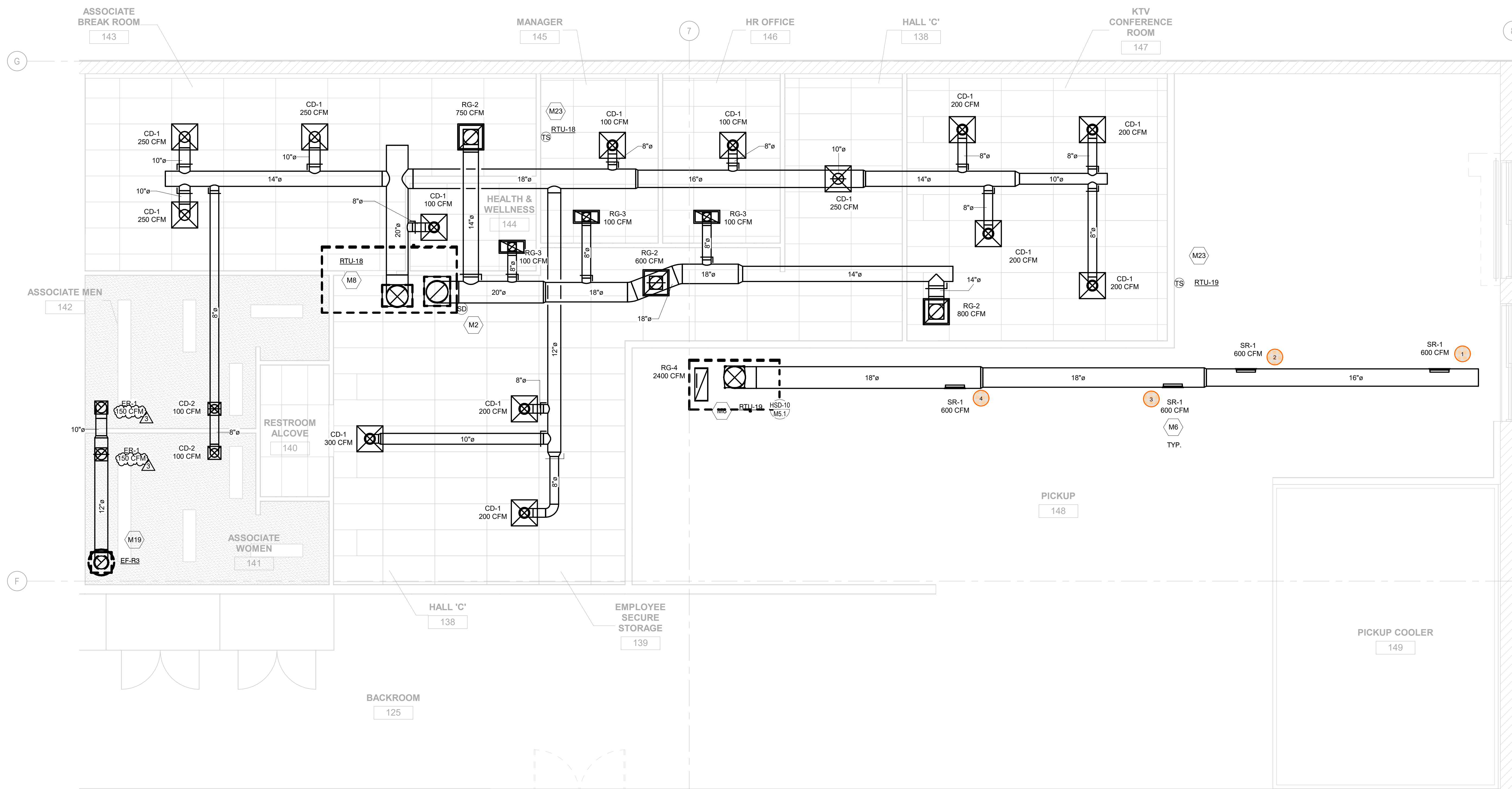


<b>ESP:</b>	<b>0.70</b>	<b>TSP:</b>	<b>0.85</b>
-------------	-------------	-------------	-------------

<i>STATIC PRESSURE READINGS (in. w.g.)</i>											
Location	A	B	C	D	E	F	G	H	I	J	K
Supply	-0.37	-0.38	-0.52	0.33							

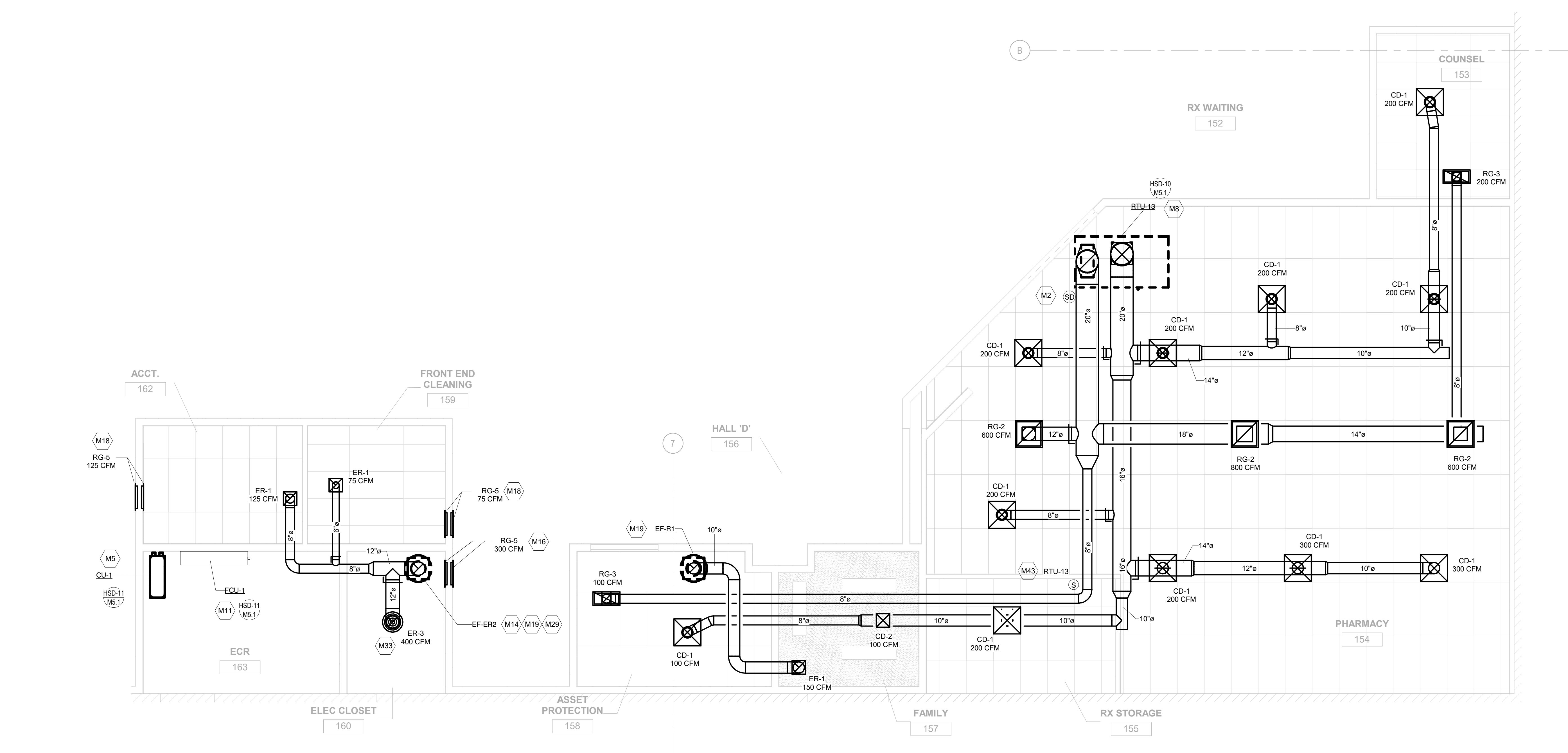
Comments: \_\_\_\_\_  
 \_\_\_\_\_  
 \_\_\_\_\_

Technician(s): Curtis Tunink Date: 9/24/2024



1 HVAC PLAN - BACK OFFICE AND PICKUP  
SCALE: 1/4" = 1'-0"

NUMBER	KEYNOTE
M2	INSTALL SMOKE DETECTOR IN THE RETURN DUCTWORK DOWNSTREAM OF FILTERS AND UPSTREAM OF ANY BRANCH CONNECTIONS. INSTALL SAMPLING TUBES(S) AND DETECTOR HOUSING IN STRICT ACCORDANCE WITH MANUFACTURER'S INSTALLATION INSTRUCTIONS. DETECTOR FAN SHUTDOWN WIRING AND CONTROLS BY OTHERS.
M5	NEW ROOF TOP OUTDOOR CONDENSING UNIT. PROVIDE SUPPORTS PER MANUFACTURER'S INSTALLATION PROCEDURES. COORDINATE LOCATION WITH OTHER ROOF TOP EQUIPMENT. FIELD VERIFY REFRIGERANT PIPE ROUTINGS PRIOR TO INSTALLATION.
M6	SIDEWALL DIFFUSERS TO BE INSTALLED AT 45 DEGREES DOWNWARD.
M8	REFER TO ARCHITECTURAL ROOF PLAN FOR HVAC ROOF TOP DIMENSIONAL INFORMATION. REFER TO STRUCTURAL DRAWINGS FOR RISE AND SEAL LOCATIONS AND DIMENSIONAL INFORMATION.
M11	INSTALL WALL-MOUNTED AIR CONDITIONING UNIT AT 7'-0" (BOTTOM OF UNIT) PER MANUFACTURER'S INSTALLATION PROCEDURES. EXTEND CONDENSATE PIPE AND DRAIN TO NEAREST DRAIN HUB. REFER TO PLUMBING DRAWINGS FOR LOCATION. COORDINATE POWER REQUIREMENTS WITH HG.
M14	DUCT UP TO OPENING THROUGH ROOF. I.C. TO PROVIDE REVERSE ACTING THERMOSTAT FOR FAN. FAN TO ENERGIZE WHEN SPACE TEMPERATURE EXCEEDS 80 DEGF.
M16	INSTALL TRANSFER GRILLE IN WALL 15' AFF. COORDINATE FINAL LOCATION WITH OWNER AND ARCHITECT.
M18	INSTALL TRANSFER GRILLE AND NECESSARY DUCTWORK IN WALL AS LOW AS POSSIBLE. COORDINATE FINAL LOCATION WITH OWNER AND ARCHITECT.
M19	EXTEND FULL SIZE DUCTWORK GURE SIZE UP THROUGH ROOF AND SEAL OPENING AIRTIGHT. REFER TO DRAWINGS MS.3 AND MS.4 FOR EXHAUST FAN INFORMATION.
M23	TEMPERATURE SENSOR FOR ROOF MOUNTED RTU FURNISHED BY CONTROL PROVIDER. ROUTE CONTROL WIRING THROUGH RTU AND BACK TO BUILDING CONTROL PANEL. MOUNT SENSOR A MINIMUM OF 4'-0" AFF. ON WALL. COORDINATE LOCATION WITH KROGER EQUIPMENT AND FURNISHINGS. PROVIDE LOCKABLE PROTECTIVE COVER OVER DEVICE.
M29	DROP DUCT DOWN TO 12'-0" TO MINIMIZE VISIBILITY FROM THE SALES FLOOR.
M33	EXHAUST GRILLE TO BE INSTALLED 8'-0" AFF.
M43	PHARMACY TO RECEIVE COMBINATION RELATIVE HUMIDITY/TEMPERATURE SENSOR. ROUTE CONTROL WIRING THROUGH RTU AND BACK TO BUILDING CONTROL PANEL. MOUNT SENSOR A MINIMUM OF 4'-0" AFF. ON WALL. COORDINATE LOCATION WITH KROGER EQUIPMENT AND FURNISHINGS. PROVIDE LOCKABLE PROTECTIVE COVER OVER DEVICE.



2 HVAC PLAN - PHARMACY  
SCALE: 1/4" = 1'-0"

WHERE SMOKE DETECTORS ARE INSTALLED MORE THAN 10 FEET ABOVE THE FINISHED FLOOR OR IN ARRANGEMENT WHERE THE DETECTORS ALARM OR SUPERVISORY INDICATOR IS NOT VISIBLE TO RESPONDING PERSONNEL, THE DETECTOR SHALL BE PROVIDED WITH REMOTE ALARM OR SUPERVISORY INDICATOR IN A LOCATION ACCEPTABLE TO AUTHORITY HAVING JURISDICTION. PROVIDE AN LED INDICATOR LIGHT ON CEILING BENEATH EACH HVAC UNIT THAT IS EQUIPPED WITH A SMOKE DETECTOR WHEN ACTIVATION LIGHT IS NOT VISIBLE FROM BELOW.

EXECUTED BY: MLM  
REVIEWED BY: DMH

CONCATANI  
DENVER  
DALLAS  
MINNEAPOLIS  
SEATTLE

600 West Street Suite 2100 Concord, CA 94509 P: 415.771.8180  
655 Broadway Suite 2400 Denver, CO 80202 P: 800.469.4949  
750 Main St Paul Street Suite 400 Dallas, TX 75201 P: 800.469.4949  
333 South Seventh Street Suite 200 Minneapolis, MN 55402 P: 800.469.4949  
505 2nd Avenue Suite 2000 Seattle, WA 98101 P: 800.469.4949

architecture + design

creating extraordinary places  
www.cr-architects.com  
800.469.4949

CONSULTANTS

OWNER

**KING Soopers**

DATE	ISSUE
11/21/2019	90% OWNER REVIEW
10/04/2021	ISSUED FOR BID

DATE	REVISION
1 10/25/2021	ADDENDUM NO. 2
2 12/01/2021	BULLETIN NO. 1
3 09/16/2023	BULLETIN NO. 11

PROJECT TITLE  
**KING SOOPERS KS147**

MERIDIAN + WOODMEN  
FALCON, CO

COMMISSION NO. 519000  
ISSUE DATE 10/04/2021  
SHEET TITLE  
**HVAC ENLARGED PLANS**

SHEET NO.  
**M4.2**

© 2018 King Soopers Architects, Inc.

THIS DOCUMENT IS THE PROPERTY OF COLLIERUSSEL ARCHITECTS, INC. NEITHER THE DOCUMENT NOR THE INFORMATION IT CONTAINS MAY BE COPIED OR USED FOR OTHER THAN THE SPECIFIC PROJECT FOR WHICH IT WAS PREPARED WITHOUT THE EXPRESS CONSENT OF COLLIERUSSEL ARCHITECTS, INC.  
5/18/2023 12:28:30 AM