

SECTION 15739 - SPLIT SYSTEM AIR CONDITIONING UNITS

PART 1 - GENERAL

1.1 SUBMITTALS

- A. Product Data and Manufacturer's Installation Instructions.
- B. WARRANTY: Furnish five year manufacturer's warranty for compressors.

PART 2 - PRODUCTS

2.1 SPLIT SYSTEM AIR CONDITIONING UNITS

- A. Product Description: Split system consisting of air handling unit and condensing unit including cabinet, evaporator fan, refrigerant cooling coil, compressor, refrigeration circuit, condenser, electric heating coil, air filters, controls, air handling unit accessories, condensing unit accessories, and refrigeration specialties.
 - B. Refer to Split-System Unit Schedule on drawing M600 for capacities, and manufacturers.
- 2.2 AIR HANDLING UNIT
- A. Configuration: As indicated on Drawings.
 - B. Evaporator Fan: Forward curved centrifugal type, resiliently mounted with adjustable belt drive and high efficiency motor complying with NEMA MG1, Type 1. Motor permanently lubricated with built-in thermal overload protection. Furnish oversize motor.
 - C. Evaporator Coil: Constructed of copper tubes expanded onto aluminum fins. Factory leak tested under water. Removable, PVC construction, double-sloped drain pan with piping connections on both sides.
 - D. Refrigeration System: Single Dual refrigeration circuits controlled by factory installed thermal expansion valve.
 - E. Electric Heating Coil: Helical nickel-chrome resistance wire coil heating elements with refractory ceramic support bushings easily accessible with automatic reset thermal cut-out, built-in contactors, galvanized steel frame, control circuit transformer and fuse, manual reset thermal cut-out, air flow proving device, pilot duty toggle switch, load fuses. Number of stages as indicated on Drawings.
 - F. Air Filters: 2 inch thick pleated media MERV 13 rating.
 - G. Air Handling Unit Accessories: Vibration Isolators

2.3 CONDENSING UNIT

- A. General: Factory assembled and tested air cooled condensing units, consisting of casing, compressors, condensers, coils, condenser fans and motors, and unit controls.
- B. Controls: Furnish operating and safety controls including high and low pressure cutouts. Control transformer. Furnish magnetic contactors for compressor and condenser fan motors.
- C. Condenser Fans and Drives: Direct drive propeller fans statically and dynamically balanced. Wired to operate with compressor. Permanently lubricated ball bearing type motors with built-in thermal overload protection. Furnish high efficiency fan motors.
- D. Condensing Unit Accessories: Furnish the following accessories:
 - 1. Anti-short cycle timer.
 - 2. Disconnect switch.
 - 3. Vibration isolators.
 - 4. Condenser Coil Guard: Condenser fan openings furnished with PVC coated steel wire safety guards.
- E. Refrigeration specialties: Furnish the following for each circuit:
 - 1. Replaceable core type filter drier.
 - 2. Liquid line sight glass and moisture indicator.
 - 3. Liquid line solenoid valve.
 - 4. Charging valve.
 - 5. Oil level sight glass.
 - 6. Refrigerant: Furnish charge of refrigerant R-410a.

2.4 ELECTRICAL CHARACTERISTICS AND COMPONENTS

- A. Disconnect Switch: Factory mounted, non-fused type, interlocked with access door, accessible from outside unit, with power lockout capability.
- PART 3 EXECUTION
- 3.1 INSTALLATION - AIR HANDLING UNIT
- A. Install air handling units on vibration isolators.
 - B. Connect air handling units to supply and return ductwork with flexible connections.
 - C. Install condensate piping with trap and route from drain pan to condensate drainage system
- 3.2 INSTALLATION - CONDENSING UNIT
- A. Install condensing units on vibration isolators.
 - B. Install refrigerant piping from unit to condensing unit.
 - C. Evacuate refrigerant piping and install initial charge of refrigerant.
 - D. Install electrical devices furnished loose for field mounting.
 - E. Install control wiring between air handling unit, condensing unit, and field installed accessories.
 - F. Install connection to electrical power wiring in accordance with Section 16150.
- 3.4 CLEANING
- A. Install temporary filters during construction period. Replace with permanent filters at Substantial Completion.
- 3.5 PROTECTION OF FINISHED WORK
- A. Do not operate air handling units until ductwork is clean, filters are in place, bearings lubricated, and fan has been test run under observation.
- END OF SECTION

SECTION 15810 - DUCTS AND ACCESSORIES

PART 1 - GENERAL

1.1 SECTION REQUIREMENTS

- A. Submittals: Product Data for fire and smoke dampers.
- B. Comply with NFPA 90A for systems serving spaces more than 25,000 cu. ft. in volume or building Types II, IV, and V construction more than 3 stories in height.
- C. Comply with NFPA 90B for systems serving spaces in 1 or 2 family dwellings or serving spaces less than 25,000 cu. ft.
- D. Comply with NFPA 96, "Ventilation Control and Fire Protection of Commercial Cooking Operations," for kitchen hood ducts.
- E. Comply with UL 181 and UL 181A for ducts and closures.
- F. Testing, Adjusting, and Balancing Agency Qualifications: AABC certified (to be furnished by Tenant).

PART 2 - PRODUCTS

2.1 DUCTS

- A. Spiral Duct: Spiral Lock Seam, without insulation, G90 galvanized finish, ASTM A-653/924
 - 1. Basis of Design Manufacturers: Lindab SPIROsafe, alternates to the basis of design must be submitted for review.
 - 2. Fittings: Factory produced standing seam construction with internal sealing. Fittings with a major axis of 36" or smaller shall be 20 gauge. Fittings with a major axis of 37"-48" shall be 18 gauge.
 - B. Galvanized Steel Sheet: Forming steel, ASTM A 653/653M, G90 coating designation.
 - C. Duct Liner: ASTM C 1071, Type II, with an airstream surface coated with a temperature resistant coating. Thickness: 1-1/2 inch. R-value : 8.
 - 1. Adhesive: ASTM C 916, Type I.
 - 2. Mechanical Fasteners: Galvanized steel pin, length as required to penetrate liner plus a 1/8 inch projection maximum into the airstream.
 - D. Joint and Seam Tape: Comply with UL 181A.
 - E. Joint and Seam Sealant: Comply with UL 181A.
 - F. Rectangular Metal Duct Fabrication: Comply with SMACNA's "HVAC Duct Construction Standard" for metal thickness, reinforcing types and intervals, tie rod applications, and joint types and intervals.
- 2.2 ACCESSORIES
- A. Volume-Control Dampers: Factory fabricated volume control dampers, complete with required hardware and accessories. Single blade and multiple opposed blade, standard leakage rating, and suitable for horizontal or vertical applications.
 - B. Fire Dampers: Factory-fabricated fire dampers, complete with required hardware and accessories. UL labeled according to UL 555, "Fire Dampers".
 - C. Flexible Connectors: Flame retardant or noncombustible fabrics, coatings, and adhesives complying with UL 181, Class 1.
 - D. Flexible Ducts: Factory fabricated, insulated, round duct, with an outer jacket enclosing 2 inch thick, glass fiber insulation, R-value: 6.0, around a continuous inner liner.

PART 3 - EXECUTION

3.1 INSTALLATION

- A. Duct System Pressure Class: Construct and install each duct system with 2 inch positive and negative duct pressure classifications.
 - B. Conceal ducts from view in finished and occupied spaces. Except where noted as exposed.
 - C. Avoid passing through electrical equipment spaces and enclosures.
 - D. Support and connect metal ducts according to SMACNA's "HVAC Duct Construction Standard".
 - E. Install duct accessories according to applicable portions of details of construction as shown in SMACNA standards.
 - F. Install liner and/or insulation on ductwork per the material schedule on sheet M010.
 - G. Install volume control dampers in lined duct with methods to avoid damage to liner and to avoid erosion of duct liner.
 - H. Install fire and smoke dampers according to manufacturer's UL approved written instructions.
 - I. Install fusible links in fire dampers.
 - J. Provide saddle taps at tees for exposed ductwork.
- 3.2 TESTING, ADJUSTING, AND BALANCING
- A. The Tenant will supply an independent balance agent to to balance and adjust the HVAC installation. The balance agent will be responsible for any pulley or belt changes required.
 - B. The GC is to have trained staffed available during the balancing to correct issues noted by the balance agent.
 - C. The balance agent is to balance airflow within distribution systems, including submains, branches, and terminals to indicated quantities +/- 10%. The hood exhaust system shall be balanced to a tolerance of -0+10% and the make-up air system to a tolerance of -10+0%.
 - D. The balance agent is to supply a copy of the balance report to the Tenant, engineer and general contractor for review.

END OF SECTION 15810

SECTION 15855 - DIFFUSERS, REGISTERS, AND GRILLES

PART 1 - GENERAL

1.1 SECTION REQUIREMENTS

- A. Submittals: None.

PART 2 - PRODUCTS

2.1 OUTLETS AND INLETS

- A. All air terminal devices:
 - 1. Refer to Grills, Registers, and Diffusers Schedule for equipment schedule
 - 2. Manufacturer: As scheduled (NO SUBSTITUTIONS)
 - 3. Material: As scheduled.
 - 4. Finish: As scheduled.
 - 5. Mounting: As scheduled.

PART 3 - EXECUTION

3.1 INSTALLATION

- A. Coordinate location and installation with duct installation and installation of other ceiling and wall mounted items.
- B. Locate ceiling diffusers, registers, and grilles, as indicated on the architectural "reflected ceiling plans." Unless otherwise indicated, locate units in center of acoustical ceiling panels.

END OF SECTION 15855

CATEGORY	APPLICATION	ALLOWABLE MATERIAL
DUCT	EXPOSED SUPPLY	RECT. LINED OR ROUND AS SHOWN, NO EXPOSED DUCT-SEALING MASTIC
	EXPOSED RETURN	RECTANGULAR, NO EXPOSED DUCT-SEALING MASTIC
	EXPOSED GEN. EXHAUST	RECTANGULAR OR ROUND AS SHOWN, NO EXPOSED DUCT-SEALING MASTIC
	CONCEALED, SUPPLY	RECT. OR ROUND AS SHOWN, LINED OR INSULATED
	CONCEALED, RETURN	RECT. OR ROUND AS SHOWN, LINED OR INSULATED
	CONCEALED, GEN. EXHAUST	RECT. OR ROUND AS SHOWN
	CONCEALED, TYPE I HOOD EXHAUST	RECTANGULAR 16 GA. BLACK IRON W/ WRAP OR UL 1978 FACTORY-MANUFACTURED DUCT W/ WRAP (SUBMIT SHOP DRAWINGS FOR FACTORY-MANUFACTURED DUCT PRIOR TO ORDERING FOR APPROVAL)

HVAC GENERAL NOTES

- A. GENERAL NOTES APPLY TO HVAC SHEETS.
- B. WORK SHALL COMPLY WITH STATE AND LOCAL CODE REQUIREMENTS AS APPROVED AND AMENDED BY THE AUTHORITY HAVING JURISDICTION, INCLUDING APPLICABLE SECTIONS OF NFPA, THE MECHANICAL CODE, AND ANY INTERIM AMENDMENTS AT THE TIME OF THE PROPOSAL. PURCHASE PERMITS ASSOCIATED WITH THE WORK. OBTAIN INSPECTIONS REQUIRED BY CODE. SEE ARCHITECTURAL SHEETS FOR THE PREVAILING CODES.
- C. CONTRACTOR AND SUBCONTRACTORS SHALL REVIEW A COMPLETE SET OF THE CONSTRUCTION DOCUMENTS.
- D. COORDINATE WORK WITH THE WORK OF OTHER TRADES, EQUIPMENT FURNISHED BY OTHERS, REQUIREMENTS OF THE OWNER, AND OF THE EXISTING CONDITIONS AT THE PROJECT SITE.
- E. DRAWINGS FOR THE MECHANICAL WORK ARE DIAGRAMMATIC, SHOWING THE GENERAL LOCATION, TYPE, LAYOUT, AND EQUIPMENT REQUIRED. THE DRAWING SHALL NOT BE SCALED FOR EXACT MEASUREMENTS, REFER TO ARCHITECTURAL DRAWINGS FOR DIMENSIONS. REFER TO MANUFACTURER'S STANDARD INSTALLATION DRAWINGS FOR EQUIPMENT CONNECTIONS AND INSTALLATION REQUIREMENTS. PROVIDE DUCTWORK, CONNECTIONS, OFFSETS, ACCESSORIES, AND MATERIALS NECESSARY FOR A COMPLETE SYSTEM.
- F. DUCT DIMENSIONS ON PLANS INDICATE DIMENSIONS OF INTERNAL FREE AREA.
- G. PERFORATED CEILING DIFFUSERS SHALL BE 4-WAY UNLESS NOTED OTHERWISE.
- H. COORDINATE ROOF WORK WITH THE OWNER'S CONSTRUCTION MANAGER PRIOR TO CONSTRUCTION.
- I. UNLESS NOTED OTHERWISE RECTANGULAR DUCT ELBOWS GREATER THAN 45° SHALL BE MITERED ELBOWS WITH DOUBLE-THICKNESS TURNING VANES AND RECTANGULAR DUCT ELBOWS 45° OR LESS SHALL BE RADIUSSED ELBOWS WITH AN INSIDE RADIUS OF AT LEAST 1/2 THE WIDTH OF THE DUCT.
- J. REPLACE AIR FILTERS WITH NEW, CLEAN MERV 8 AIR FILTERS AT TURNOVER.
- K. THE TERM "FURNISH" MEANS SUPPLY AND DELIVER TO THE PROJECT SITE, READY FOR UNLOADING, UNPACKING, ASSEMBLY, INSTALLATION, AND SIMILAR OPERATIONS. THE TERM "INSTALL" DESCRIBES THE OPERATIONS AT THE PROJECT SITE INCLUDING THE ACTUAL UNLOADING, UNPACKING, ASSEMBLY, ERECTING, PLACING, ANCHORING, APPLYING, WORKING TO DIMENSION, FINISHING, CURING, PROTECTING, CLEANING, AND SIMILAR OPERATIONS. THE TERM "PROVIDE" MEANS TO FURNISH AND INSTALL, COMPLETE AND READY FOR THE INTENDED USE.
- L. INSTALL LABELING CALLED FOR IN THE MECHANICAL DRAWINGS USING ENGRAVED PHENOLIC PLATES (WHITE WITH BLACK LETTERING) FURNISHED BY TSV.
- M. PROVIDE P3000 12 GA. UNISTRUT WITH PG FINISH FOR DUCT SUPPORTS AND OTHER UNISTRUT IN AREAS EXPOSED TO VIEW. SLOTTED UNISTRUT AND OTHER UNISTRUT WITH HOLES IS NOT ACCEPTABLE.

Consultant:



4635 Trueman Blvd, Suite 250
 Hilliard, Ohio 43026
 Phone: (614) 751-9610
 Fax: (614) 552-5240
 Contact: Joe Jones
 (614) 328-2024

jjones@nationalengineering.com

FOR CONSTRUCTION

COPYRIGHT 2025
 THIS DRAWING IS AN INSTRUMENT OF SERVICE AND AS SUCH REMAINS THE PROPERTY OF CHIPOTLE MEXICAN GRILL, INC. PERMISSION FOR USE OF THIS DOCUMENT IS LIMITED AND CAN BE EXTENDED ONLY BY WRITTEN AGREEMENT WITH CHIPOTLE MEXICAN GRILL, INC.



CHIPOTLE MEXICAN GRILL, INC.
 PO BOX 182566
 COLUMBUS, OH 43218-2566
 TELEPHONE: (614) 338-2400
 INTERNET: WWW.CHIPOTLE.COM

STORE NO.: 5749
 RAVENSWOOD
 1825 W. LAWRENCE AVE
 CHICAGO, IL 60640

Issue Record:
 2025/07/01 CLIENT REVIEW
 2025/08/18 PERMIT ISSUE
 2025/10/07 IFC SET

Revisions:

No.	Description

Drawn: JEJ Checked: RTJ

Project No.
 2401135

Contents:

HVAC SPECIFICATIONS

M010

HVAC ABBREVIATIONS

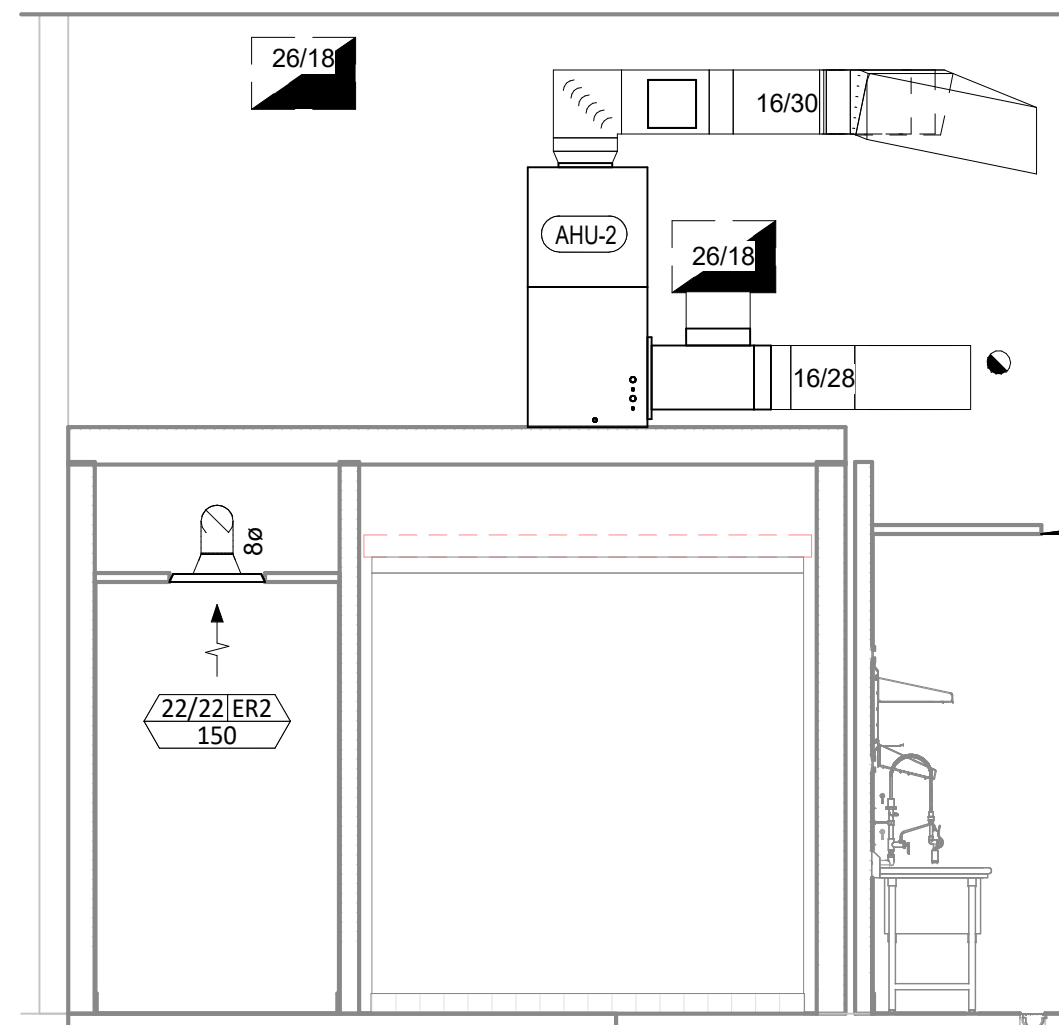
- AFF ABOVE FINISHED FLOOR
- AFG ABOVE FINISHED GRADE
- CD CEILING DIFFUSER
- CU CONDENSING UNIT
- (E) EXISTING
- EF EXHAUST FAN
- ER EXHAUST REGISTER
- EXT'G EXISTING
- HD HOOD
- MUA MAKEUP AIR UNIT
- OBD BLADE DAMPER
- RG RETURN GRILLE
- RTU ROOFTOP UNIT
- SR SUPPLY REGISTER
- VSC VARIABLE SPEED CONTROL
- CO2AS TENANT'S CO2 ALARM SUPPLIER
- GC GENERAL CONTRACTOR
- HES TENANT'S HVAC EQUIPMENT SUPPLIER
- HS TENANT'S HOOD SUPPLIER
- KES TENANT'S KITCHEN EQUIPMENT SUPPLIER
- TAB TENANT'S TEST AND BALANCE VENDOR
- TCC TENANT'S CABLING CONTRACTOR
- TDC TENANT'S DUCT CLEANER
- TEMS TENANT'S ENERGY MANAGEMENT SYSTEM SUPPLIER
- TLS TENANT'S LIGHT/LAMP SUPPLIER
- TMB TENANT'S MENU BOARD SUPPLIER
- TMS TENANT'S MILLWORK SUPPLIER
- TP TENANT'S PHONE SUPPLIER
- TPS TENANT'S PANELBOARD SUPPLIER
- TRS TENANT'S RAILING SUPPLIER
- TSV TENANT'S SIGN VENDOR
- TUV TENANT'S UV SANITIZER SUPPLIER
- WCS TENANT'S WALK-IN COOLER SUPPLIER
- WHS TENANT'S WATER HEATER SUPPLIER

HVAC SYMBOLS

- CEILING DIFFUSER
- CEILING-MOUNTED RETURN OR EXHAUST REGISTER
- SUPPLY REGISTER
- RETURN GRILLE
- FLEXIBLE DUCT
- MITERED CORNER WITH TURNING VANES
- DUCTWORK INTERNAL FREE DIMENSIONS (WIDTH/HEIGHT) RECTANGULAR TO ROUND DUCT TRANSITION
- DUCT-MOUNTED SMOKE DETECTOR
- MOTOR-OPERATED DAMPER
- MANUAL VOLUME DAMPER
- GREASE DUCT CLEANOUT
- MITERED CORNER WITHOUT TURNING VANES
- GRIDPOINT THERMOSTAT
- GRIDPOINT ZONE SENSOR MODULE
- GRIDPOINT SUPPLY PROBE
- PLAN NOTE: SEE PLAN NOTES LISTED ON THE SAME SHEET FOR NOTE MEANING
- CONNECT TO EXISTING
- EQUIPMENT TAG: SEE EQUIPMENT SCHEDULE ON SHEET M600 FOR EQUIPMENT INFORMATION
- AUDIO/VISUAL REMOTE SMOKE DETECTOR ANNUNCIATOR WITH REMOTE KEY OPERATED RESET
- GRILL, REGISTER, OR DIFFUSER TAG: TAG NECK SIZE AIRFLOW [CFM]

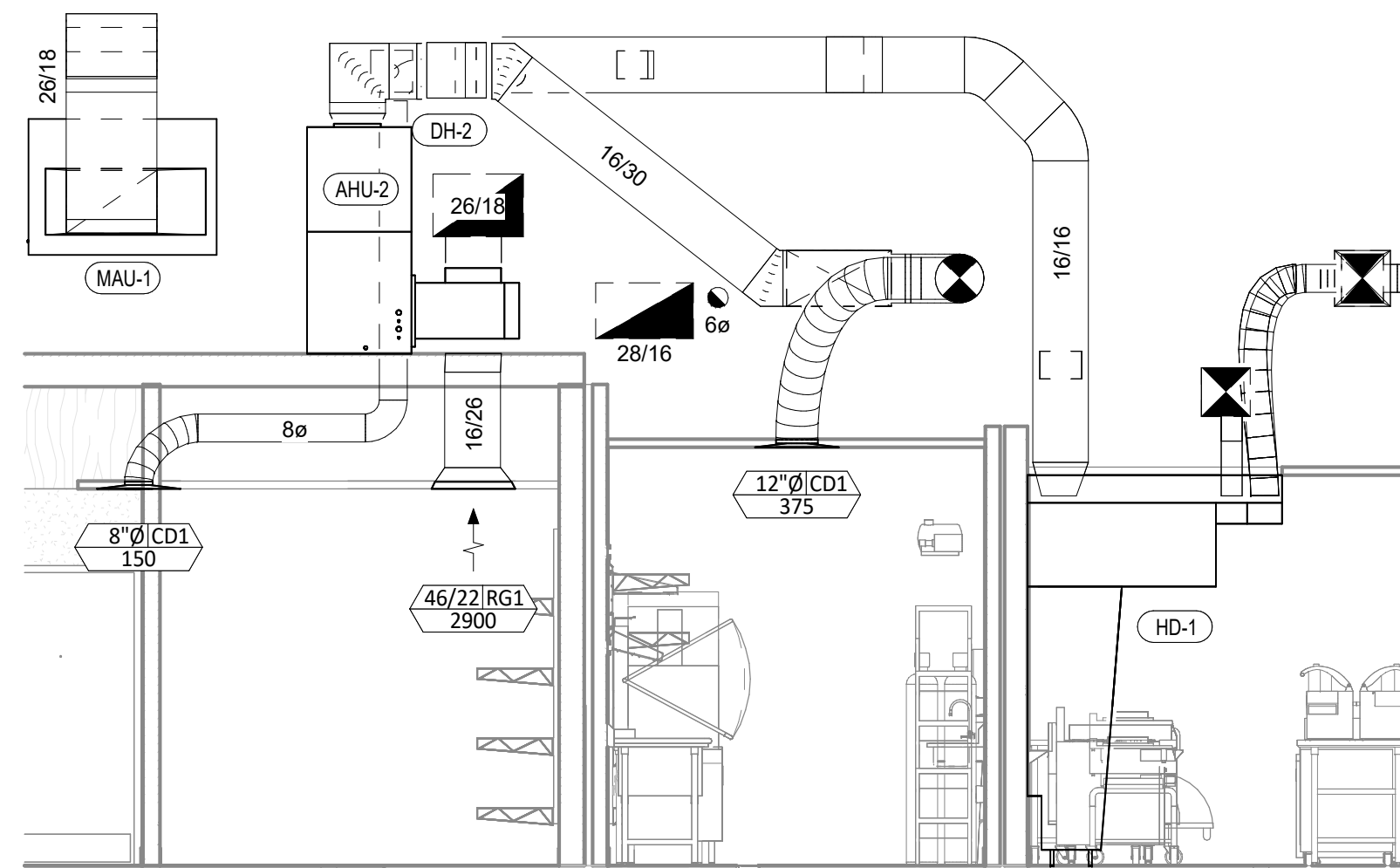
HVAC PLAN NOTES

- SEE ARCHITECTURAL REFLECTED CEILING PLAN FOR CEILING MOUNTED EQUIPMENT LOCATION. TYPICAL.
- PAINT DUCTWORK VISIBLE THROUGH DINING ROOM SUPPLY REGISTERS AND RETURN GRILL BLACK. TYPICAL.
- CONNECT TO EXISTING GREASE EXHAUST DUCT STUBBED INTO THE SPACE IN THE LOCATION SHOWN. ENSURE ALL CONNECTIONS ARE FULLY WELDED.
- 28/16 DUCT OUT FOR TRANSITION TO AHU-1 RETURN CONNECTION. AHU-1 SHALL HAVE A GC PROVIDED SMOKE DETECTOR MOUNTED IN THE RETURN AIR STREAM. INTERLOCK SMOKE DETECTOR TO AHU-1 OPERATION.
- 28/16 DUCT OUT FOR TRANSITION TO AHU-2 RETURN CONNECTION. AHU-2 SHALL HAVE A GC PROVIDED SMOKE DETECTOR MOUNTED IN THE RETURN AIR STREAM. INTERLOCK SMOKE DETECTOR TO AHU-2 OPERATION.
- 30/16 DUCT UP FROM AHU-1 TO BUILDING SUPPLY CONNECTION.
- 30/16 DUCT UP FROM AHU-2 TO BUILDING SUPPLY CONNECTION.
- 26/18 DUCT THROUGH WALL TO MAU-1 SUSPENDED IN GARAGE.
- 16/16 DUCT UP FROM HOOD THROUGH ROOF TO EF-1 COMPLIANT WITH NFPA 96. PROVIDE RADIUS ELBOWS WITH AN INSIDE RADIUS OF 0.5W AT ELBOWS IN GREASE DUCT.
- PROVIDE DUCT FROM EF-2 & EF-3 TO EXISTING LOUVER AS SHOWN. HOLD EXPOSED DUCT AS HIGH AS POSSIBLE IN DINING ROOM.
- 28/6 DUCT DOWN TO MAKEUP AIR PSP DUCT CONNECTION. TRANSITION TO SUPPLY PLENUM OPENING SIZE. TYPICAL FOR 3.
- 8" DIA. DUCT DOWN TO AC PSP DUCT CONNECTION. TRANSITION TO SUPPLY PLENUM OPENING SIZE. TYPICAL. CAP UNUSED DUCT CONNECTIONS.
- INSTALL SINGLE GANG VERTICAL J-BOX GRIDPOINT THERMOSTATS FURNISHED BY TEMS FOR AHU-1 AND AHU-2 AT THIS LOCATION AT 48" AFF. COORDINATE WITH ELECTRICAL SWITCHING IN THIS AREA. PROVIDE WIRING AS SHOWN IN DETAIL 8/E710.
- INSTALL GRIDPOINT ZONE SENSOR MODULE FURNISHED BY TEMS FOR AHU-1 AT THIS LOCATION 60" AFF DIRECTLY TO WALL (NO JUNCTION BOX). COORDINATE LOCATION WITH EQUIPMENT. PROVIDE WIRING AS SHOWN IN DETAIL 8/E710.
- INSTALL GRIDPOINT ZONE SENSOR MODULE FURNISHED BY TEMS FOR AHU-2 AT THIS LOCATION 66" AFF DIRECTLY TO WALL (NO JUNCTION BOX). COORDINATE LOCATION WITH EQUIPMENT. PROVIDE WIRING AS SHOWN IN DETAIL 8/E710.
- INSTALL GRIDPOINT SUPPLY PROBE FURNISHED BY TEMS FOR AHU-1 IN THE SUPPLY DUCTWORK UPSTREAM FROM THE FIRST BRANCH CONNECTION. PROVIDE WIRING AS SHOWN IN DETAIL 8/E710.
- INSTALL GRIDPOINT SUPPLY PROBE FURNISHED BY TEMS FOR AHU-2 IN THE SUPPLY DUCTWORK UPSTREAM FROM THE FIRST BRANCH CONNECTION. PROVIDE WIRING AS SHOWN IN DETAIL 8/E710.
- INSTALL REMOTE TEMPERATURE SENSOR FOR HOOD HD-1 AT THIS LOCATION 60" AFF. COORDINATE LOCATION WITH EQUIPMENT. PROVIDE (2) #18 G. THERMISTOR CABLE FROM TEMPERATURE SENSOR TO HOOD CONTROL PANEL.
- INSTALL KITCHEN HOOD, HD-1. SUPPORT HOOD PER MANUFACTURER'S INSTALLATION INSTRUCTIONS AND AS DETAILED IN THE ARCHITECTURAL AND STRUCTURAL DRAWINGS. INSTALL HOOD ACCORDING TO THE REQUIREMENTS OF ITS LISTING, IN COMPLIANCE WITH NFPA 96, THE BUILDING CODE, AND AUTHORITIES HAVING JURISDICTION. HOOD SHALL HAVE AN INTEGRAL DUCT COLLAR TEMPERATURE SENSOR TO AUTOMATICALLY ENERGIZE THE EXHAUST AND MAKEUP AIR FANS IF COOKING TEMPERATURES ARE DETECTED. EXHAUST DUCT SYSTEM TO BE WELDED OR FACTORY-MANUFACTURED WATER AND AIR TIGHT. INSTALL CLEANOUTS PER CODE AND AS SHOWN. INSTALL HOOD PER DETAILS 2, 4, AND 9/M700. CHIPOTLE WILL PROVIDE AN INDEPENDENT TESTING AGENCY FOR TESTING THE INTEGRITY OF THE GREASE DUCT SYSTEM.
- ADJUST SUPPLY REGISTERS SO THAT SUPPLY AIR HITS WALL ON OPPOSITE SIDE OF ROOM AT APPROXIMATELY 7' AFF WITH NO DRAFTS FELT IN THE DINING ROOM.
- PROVIDE AUDIO/VISUAL REMOTE SMOKE DETECTOR ANNUNCIATOR WITH REMOTE KEY OPERATED RESET. WIRE A UNIT BACK TO EACH SMOKE DETECTOR. MOUNT UNIT 60" AFF. TYPICAL.
- PROVIDE SUPPLY DIFFUSER CONNECTION TO SUPPLY SYSTEM PER DETAIL 1/M700. TYPICAL.
- PROVIDE DUCT FROM MAU-1 TO EXISTING LOUVER AS SHOWN. HOLD EXPOSED DUCT AS HIGH AS POSSIBLE IN DINING ROOM.



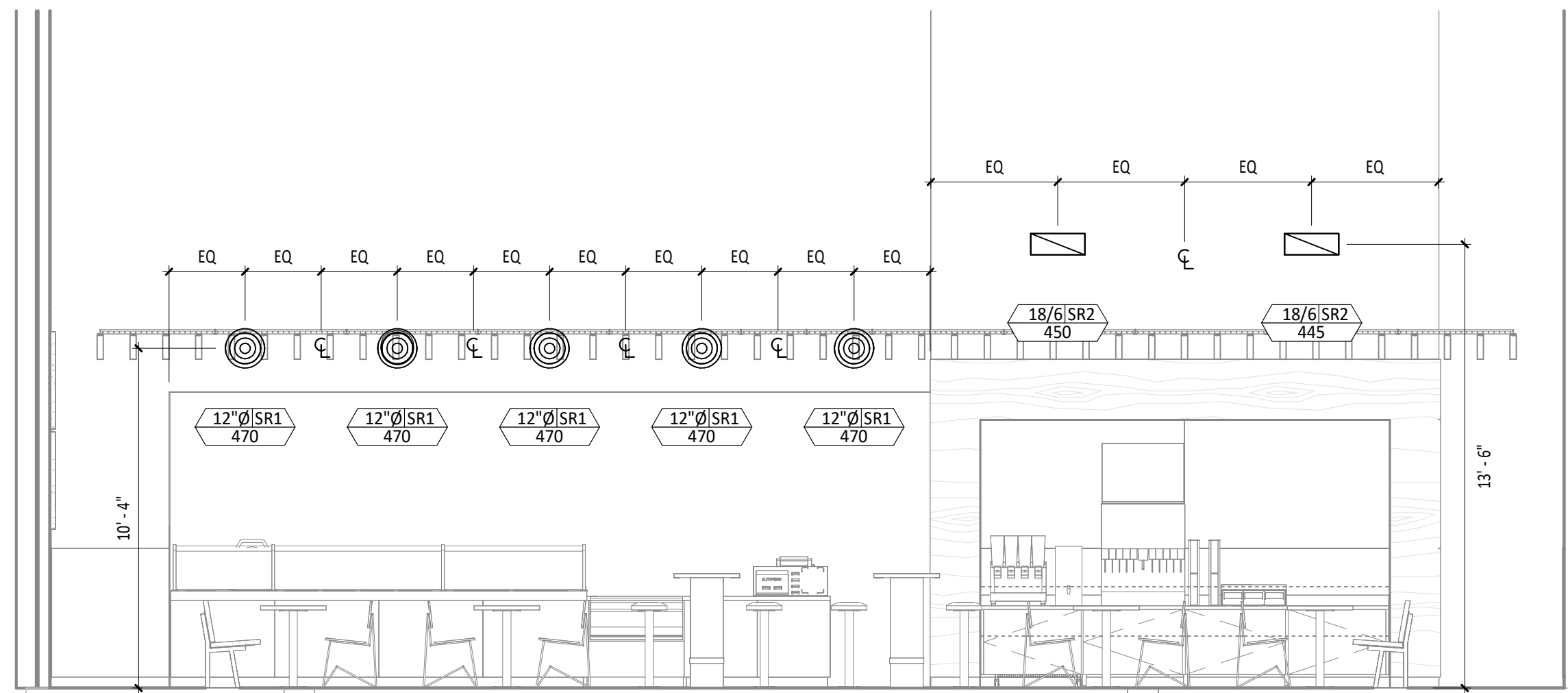
4 DUCT SECTION AT AHU

1/4" = 1'-0"



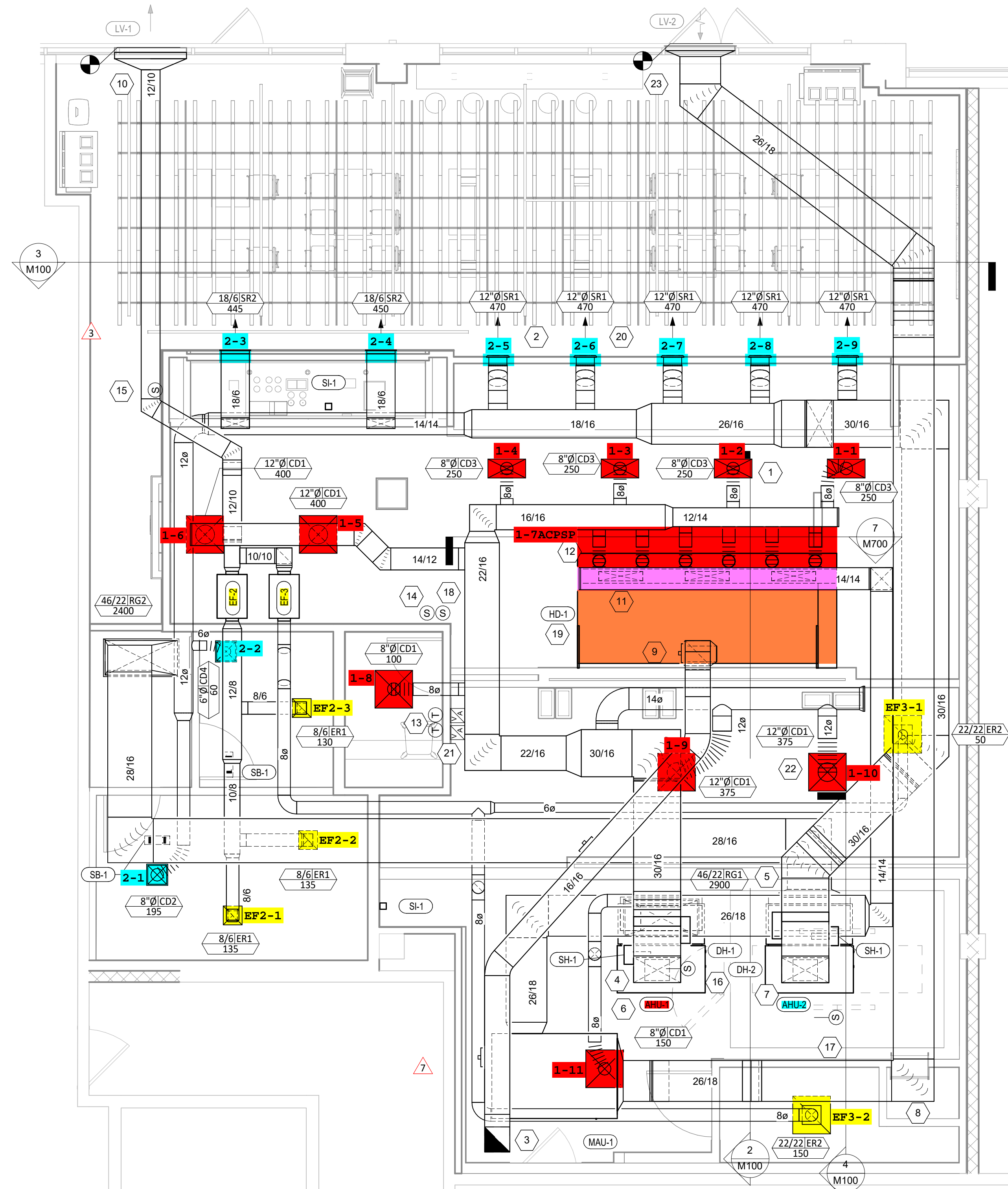
2 DUCT SECTION AT HOOD

1/4" = 1'-0"



3 HVAC DINING ROOM SECTION

1/4" = 1'-0"



1 HVAC FLOOR PLAN

1/4" = 1'-0"

Consultant:



NATIONAL
ENGINEERING
4635 Trueman Blvd, Suite 250
Hilliard, Ohio 43026
Phone: (614) 751-9610
Fax: (614) 552-5240
Contact: Joe Jones
(614) 328-2024
jjones@nationalengineering.com

FOR CONSTRUCTION

COPYRIGHT 2025
THIS DRAWING IS AN INSTRUMENT OF SERVICE AND AS SUCH REMAINS THE PROPERTY OF CHIPOTLE MEXICAN GRILL, INC. PERMISSION FOR USE OF THIS DOCUMENT IS LIMITED AND CAN BE EXTENDED ONLY BY WRITTEN AGREEMENT WITH CHIPOTLE MEXICAN GRILL, INC.



CHIPOTLE MEXICAN GRILL, INC.
PO BOX 182566
COLUMBUS, OH 43218-2566
TELEPHONE: (614) 338-2400
INTERNET: WWW.CHIPOTLE.COM

STORE NO.: 5749
RAVENSWOOD
1825 W. LAWRENCE AVE
CHICAGO, IL 60640

Issue Record:	CLIENT REVIEW
2025/07/01	PERMIT ISSUE
2025/08/18	IFC SET
2025/10/07	

Revisions:	VALUE ENGINEERING REVS
3 2025/11/14	MUA & MEZZANINE REVS
7 2025/12/18	

Drawn: JEJ
Checked: RTJ/JAE

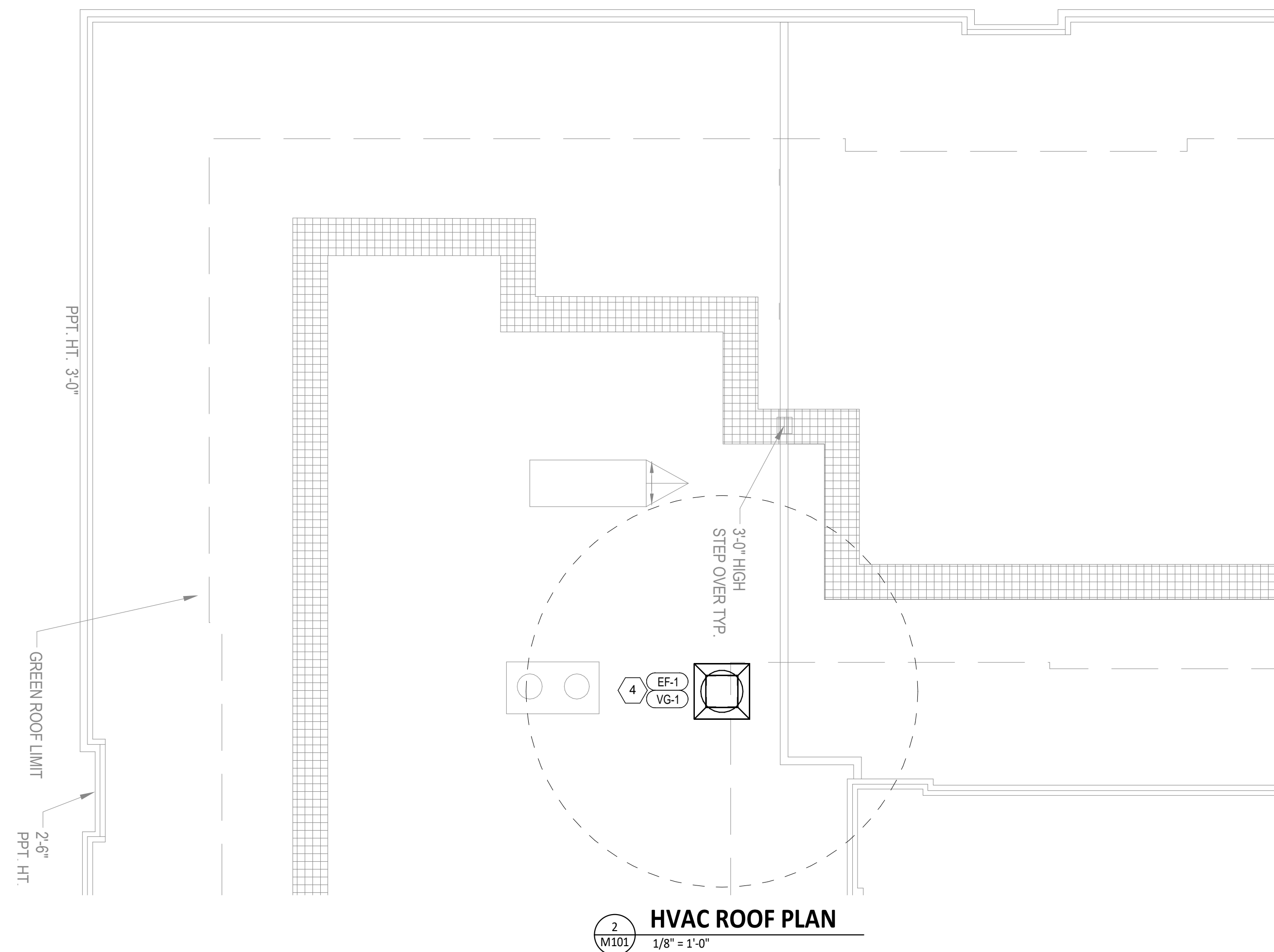
Project No:
2401135

Contents:
HVAC PLAN

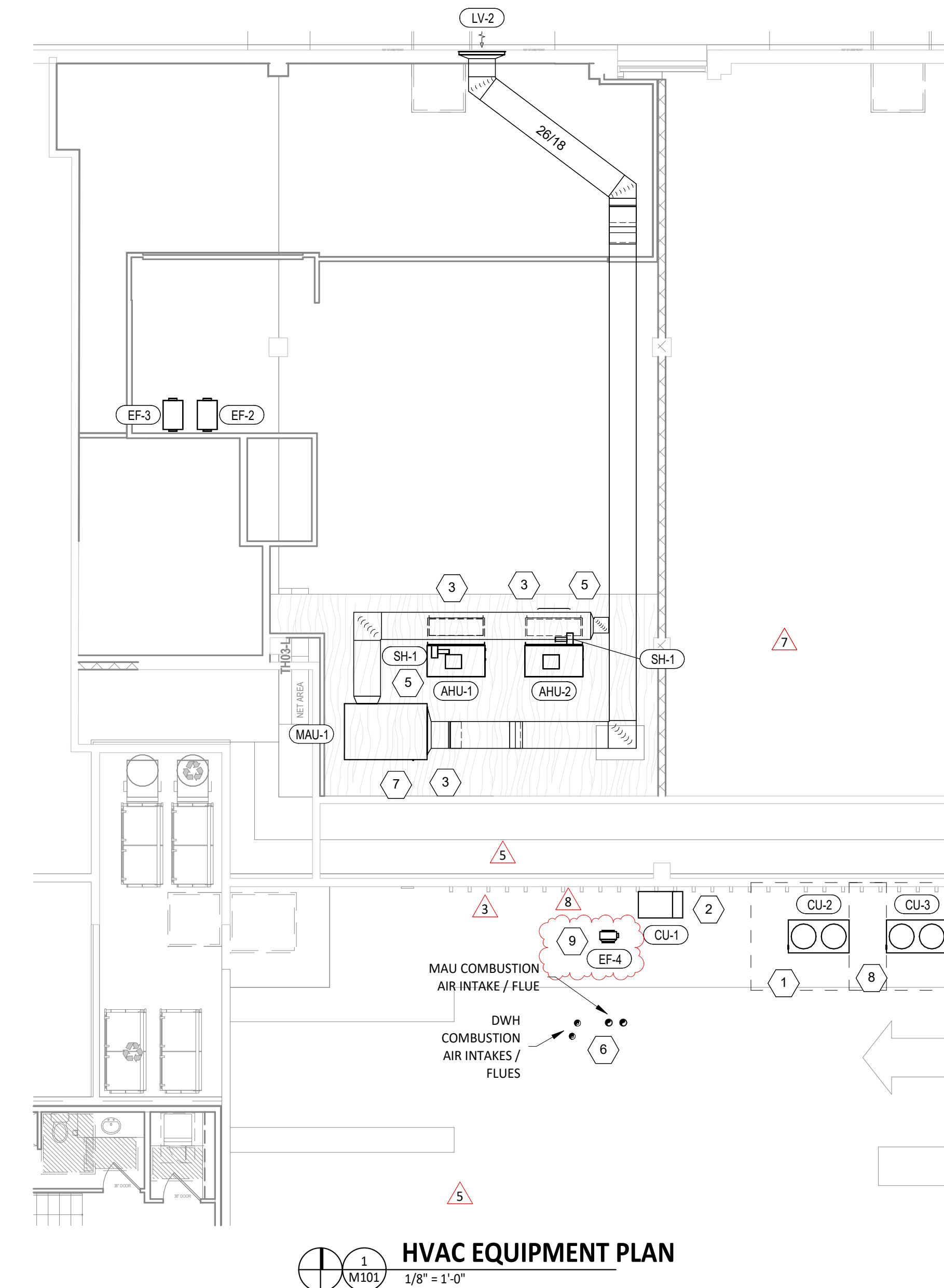
M100

HVAC PLAN NOTES

- 1 INSTALL CONDENSING UNITS FOR AIR HANDLERS ON WALL OF GARAGE AS SHOWN. COORDINATE LOCATIONS WITH EXISTING CONDENSING UNITS AND EQUIPMENT.
- 2 INSTALL REMOTE CONDENSING UNIT FOR WALK-IN COOLER ON WALL OF GARAGE AS DETAILED IN THE ARCHITECTURAL AND STRUCTURAL DRAWINGS. INSTALL REFRIGERANT LINE SET, THERMOSTATIC EXPANSION VALVE, SOLENOID VALVE, TEMPERATURE CONTROL, SIGHT GLASS, FILTER DRIER, PRESSURE CONTROL, LOW AMBIENT CONTROLS, AND WEATHERPROOF HOUSING. TRAP AND SLOPE REFRIGERANT LINES PER MANUFACTURER'S RECOMMENDATIONS. INSTALLATION SHALL COMPLY WITH ASHRAE/ANSI STANDARD 15. INSTALL THE REFRIGERANT LINE SET UNDER THE ROOF DECK TO WITHIN 3' OF THE CONDENSING UNIT. CUT 2-1/2" HOLE IN WALK-IN COOLER ROOF FOR REFRIGERANT LINE SET AND SEAL PER THE COOLER MANUFACTURER'S INSTALLATION INSTRUCTIONS AFTER LINE SET IS INSTALLED.
- 3 INSTALL EQUIPMENT PLATFORM EQUIPMENT PER MANUFACTURER'S INSTALLATION INSTRUCTIONS AND AS DETAILED IN THE ARCHITECTURAL AND STRUCTURAL DRAWINGS. COORDINATE EQUIPMENT LOCATIONS WITH WORK OF OTHER TRADES SO THAT THE MANUFACTURER RECOMMENDED CLEARANCES ARE MAINTAINED.
- 4 INSTALL EXHAUST FAN EF-1 PER DETAIL 5/M700 AND AS DETAILED IN THE ARCHITECTURAL AND STRUCTURAL DRAWINGS. INSTALL GREASE VIROGUARD SYSTEM FURNISHED BY CHIPOTLE ON EXHAUST FAN, EF-1.
- 5 INSTALL REME HALO AIR PURIFIER FURNISHED BY TUV IN SUPPLY DUCTWORK PER DETAIL 6/M700. SEE ELECTRICAL DRAWINGS FOR POWER CONNECTION INFORMATION. INSTALL UV WARNING STICKERS ON FACE OF ENCLOSURE PER DETAIL AND ON ANY RTU ACCESS DOOR(S) THROUGH WHICH THE REME HALO WOULD BE VISIBLE IF OPENED.
- 6 MAINTAIN 15' CLEARANCE BETWEEN WATER HEATER FLUE TERMINATION AND OUTSIDE AIR INTAKES. MAINTAIN 10' CLEARANCE BETWEEN WATER HEATER COMBUSTION AIR INTAKE AND EXHAUST FAN EF-1 DISCHARGE. SEE PLUMBING DRAWINGS FOR MORE INFORMATION ON WATER HEATER FLUE AND COMBUSTION AIR TERMINATIONS.
- 7 INSTALL MAU-1 TIGHT TO ROOF. COORDINATION LOCATION WITH EXISTING PIPING.
- 8 PROVIDE REFRIGERANT PIPING BETWEEN THE CONDENSING UNIT AND THE AIR HANDLING UNIT PER THE MANUFACTURER'S INSTALLATION INSTRUCTIONS. REFRIGERANT SHALL BE ROUTED THROUGH THE EXTERIOR WALL, CONCEALED WITHIN THE REAR FRAMED WALL OF THE KITCHEN, INTO THE EQUIPMENT PLATFORM SPACE AND ROUTED TO THE EQUIPMENT.
- 9 INSTALL FLUE BOOSTER FAN IN AN ACCESSIBLE LOCATION IN THE GARAGE PER THE MANUFACTURER'S INSTALLATION INSTRUCTIONS. CONFIRM EXACT LOCATION WITH FLUE VENT ROUTING AND MANUFACTURER'S INSTALLATION INSTRUCTIONS.



HVAC ROOF PLAN
1/8" = 1'-0"



HVAC EQUIPMENT PLAN
1/8" = 1'-0"

Consultant:



4635 Trueman Blvd, Suite 250
Hilliard, Ohio 43026
Phone: (614) 751-9610
Fax: (614) 552-5240
Contact: Joe Jones
(614) 328-2024
jjones@nationalengineering.com

FOR CONSTRUCTION

COPYRIGHT 2025
THIS DRAWING IS AN INSTRUMENT OF SERVICE AND AS SUCH REMAINS THE PROPERTY OF CHIPOTLE MEXICAN GRILL, INC. PERMISSION FOR USE OF THIS DOCUMENT IS LIMITED AND CAN BE EXTENDED ONLY BY WRITTEN AGREEMENT WITH CHIPOTLE MEXICAN GRILL, INC.



CHIPOTLE MEXICAN GRILL, INC.
PO BOX 182566
COLUMBUS, OH 43218-2566
TELEPHONE: (614) 318-2400
INTERNET: WWW.CHIPOTLE.COM

STORE NO.: 5749
RAVENSWOOD
1825 W. LAWRENCE AVE
CHICAGO, IL 60640

Issue Record:	CLIENT REVIEW
2025/07/01	PERMIT ISSUE
2025/08/18	IFC SET
2025/10/07	

Revisions:	VALUE ENGINEERING REVS
3 2025/11/14	REVISION 5
5 2025/12/04	MUA & MEZZANINE REVS
7 2025/12/18	DUCT FAN REV
8 2025/12/31	

Drawn: JEJ
Checked: RTJ/JAE

Project No:
2401135

Contents:

HVAC PLAN

M101

SANITIZING EQUIPMENT SCHEDULE

TAG	COUNT	DESCRIPTION	FURNISHED BY	INSTALLED BY	BASIS FOR DESIGN		REMARKS
					MANUFACTURER	MODEL	
SB-1	2	BATHROOM AIR PURIFICATION UNIT	TUV	GC	RGF ENVIRONMENTAL GROUP	BRU ASSEMBLY	SEE ELECTRICAL SHEETS FOR CONNECTION INFORMATION
SH-1	2	HVAC AIR PURIFICATION UNIT	TUV	GC	RGF ENVIRONMENTAL GROUP	REME-HALO	SEE DETAIL 6/M700 FOR INSTALLATION INFORMATION.
SI-1	2	ICE MACHINE TREATMENT SYSTEM	TUV	GC	RGF ENVIRONMENTAL GROUP	IMS-B-GA	SEE PLUMBING DRAWINGS FOR INSTALLATION INFORMATION.

VIROGUARD SCHEDULE

TAG	QUANTITY	DESCRIPTION	DUCT CONNECTION SIZE	FAN	FURNISHED BY	INSTALLED BY	BASIS FOR DESIGN MANUFACTURER
VG-1	1	VIROGUARD HOOD EXHAUST FAN ROOFTOP CONTAINMENT SYSTEM	16" X 16"	CAPTIVE-AIRE DU180HFA	TDC	GC	ENVIROMATIC

GRILLS, REGISTERS, AND DIFFUSERS SCHEDULE

TAG	DESCRIPTION	FACE SIZE	MATERIAL	FINISH	MOUNTING	FURNISHED BY	INSTALLED BY	BASIS FOR DESIGN		NOTES
								MANUFACTURER	MODEL	
CD1	PERFORATED CEILING DIFFUSER	24" X 24"	ALUMINUM	WHITE	LAY-IN CEILING	GC	GC	NAILOR	4320A TYPE L	PROVIDE INTEGRAL OBD
CD2	PERFORATED CEILING DIFFUSER	12" X 12"	ALUMINUM	WHITE	GYP CEILING	GC	GC	NAILOR	4320A TYPE S	PROVIDE INTEGRAL OBD
CD3	PERFORATED CEILING DIFFUSER	24" X 12"	ALUMINUM	WHITE	LAY-IN CEILING	GC	GC	NAILOR	4320A TYPE L	PROVIDE INTEGRAL OBD, REMOVE 4-WAY DEFLECTOR
CD4	PERFORATED CEILING DIFFUSER	12" X 12"	ALUMINUM	WHITE	GYP CEILING	GC	GC	NAILOR	4320A TYPE S	PROVIDE INTEGRAL OBD
ER1	PERFORATED CEILING EXHAUST	12" X 12"	ALUMINUM	WHITE	GYP CEILING	GC	GC	NAILOR	4330R TYPE S	PROVIDE INTEGRAL OBD
ER2	PERFORATED CEILING RETURN	24" X 24"	ALUMINUM	WHITE	LAY-IN CEILING	GC	GC	NAILOR	4330R TYPE L	
RG1	PERFORATED CEILING RETURN	48" X 24"	ALUMINUM	WHITE	LAY-IN CEILING	GC	GC	NAILOR	4330R TYPE L	
RG2	PERFORATED CEILING RETURN	48" X 24"	ALUMINUM	WHITE	GYP CEILING	GC	GC	NAILOR	4330R TYPE S	
SR1	ADJUSTABLE TURBO NOZZLE	SEE NECK SIZE	ALUMINUM	WHITE	WALL	GC	GC	AIR CONCEPTS	ANR-12	PROVIDE FACE-ACCESSIBLE OBD
SR2	DOUBLE DEFLECTION SUPPLY REGISTER	SEE NECK SIZE	ALUMINUM	WHITE	WALL	GC	GC	NAILOR	51DH	PROVIDE INTEGRAL OBD

LOUVER SCHEDULE

TAG	DESCRIPTION	SIZE	FREE AREA	FLOW	PRESSURE DROP	MATERIAL	FINISH	FURNISHED BY	INSTALLED BY	BASIS FOR DESIGN MANUFACTURER	MODEL	REMARKS
LV-1	DRAINABLE EXHAUST LOUVER	EXT'G	0.86 SF	600 CFM	0.08 in-wg	ALUMINUM	EXT'G	EXT'G	EXT'G	EXISTING	EXISTING	EXISTING LOUVER INSTALLED BY LL
LV-2	DRAINABLE OA INTAKE LOUVER	EXT'G	1.36 SF	3400 CFM	0.04 in-wg	ALUMINUM	EXT'G	EXT'G	EXT'G	EXISTING	EXISTING	EXISTING LOUVER INSTALLED BY LL

FAN SCHEDULE

TAG	DRIVE TYPE	EXHAUST FLOW [CFM]	E.S.P. [in W.C.]	WEIGHT [lbs]	ELECTRICAL		FURNISHED BY	INSTALLED BY	BASIS FOR DESIGN		REMARKS
					MOTOR POWER	V/P/H			MANUFACTURER	MODEL	
EF-1	DIRECT	2600 CFM	1.30 in-wg	400	2	208/3/60	HS	GC	CAPTIVE-AIRE	DU180HFA	FURNISHED WITH DISCONNECT AND VENTED ROOF CURB
EF-2	DIRECT	400 CFM	0.80 in-wg	115	0.33	120/1/60	HS	GC	CAPTIVE-AIRE	SIF11DD	WITH DISCONNECT, VARIABLE SPEED CONTROLLER, BACKDRAFT DAMPER, AND VIBRATION ISOLATORS.
EF-3	DIRECT	200 CFM	0.80 in-wg	115	0.33	120/1/60	HS	GC	CAPTIVE-AIRE	SIF11DD	WITH DISCONNECT, VARIABLE SPEED CONTROLLER, BACKDRAFT DAMPER, AND VIBRATION ISOLATORS.
EF-4	DIRECT	350 CFM	1.00 in-wg	25	.25	115/1/60	GC	GC	TJERNLUND PRODUCTS	MODEL 1 DRAFT INDUCER	DUCT MOUNTED BOOSTER FAN.

DUCT HEATER SCHEDULE

TAG	DESCRIPTION	TOTAL [CFM]	DUCT SIZE		NUMBER OF STEPS	MBH	EAT [DEG. F]	ELECTRICAL		BASIS FOR DESIGN		REMARKS		
			DUCT WIDTH	DUCT HEIGHT				KW	V/P/H	FURNISHED BY	INSTALLED BY		MANUFACTURER	MODEL
DH-1	KITCHEN DUCT HEATER	3117 CFM	30"	16"	2	49	73	14	208/3/60	HES	GC	INDECO	OPEN COIL	THERMAL CUTOUT, AIRFLOW SWITCH, INTEGRAL DISCONNECT SWITCH.
DH-2	DINING ROOM DUCT HEATER	3030 CFM	30"	16"	2	49	73	14	208/3/60	HES	GC	INDECO	OPEN COIL	THERMAL CUTOUT, AIRFLOW SWITCH, INTEGRAL DISCONNECT SWITCH.

MAKEUP AIR UNIT SCHEDULE

TAG	DESCRIPTION	AIRFLOW		HEATING CAPACITY			APPROXIMATE WEIGHT [lbs]	ELECTRICAL		FURNISHED BY	INSTALLED BY	BASIS FOR DESIGN		REMARKS	
		SUPPLY FLOW [CFM]	E.S.P. [in. W.C.]	INPUT [MBH]	OUTPUT [MBH]	MAXIMUM TURNDOWN		EAT	MOTOR POWER			V/P/H	MANUFACTURER		MODEL
MAU-1	INDIRECT GAS FIRED HEATER	3400	0.80	300	240	12.5:1	3 °F	1554	2 HP	208/1/60	HES	GC	RUPP	RARTU2-I.300-18	INDIRECT GAS FIRED HEATER, INDOOR SIDE DISCHARGE, FURNISHED WITH DISCONNECT, COCENTRIC FLUE/INTAKE, AND WASHABLE ALUMINUM FILTERS.

CONDENSING UNIT SCHEDULE

TAG	DESCRIPTION	NOMINAL CAPACITY [TONS]	NUMBER OF COMPRESSORS	NUMBER OF CIRCUITS	REFRIGERANT TYPE	REFRIGERANT CHARGE	WEIGHT	ELECTRICAL			FURNISHED BY	INSTALLED BY	BASIS FOR DESIGN		REMARKS
								MOC	FLA	V/P/H			MANUFACTURER	MODEL	
CU-1	WALK-IN COOLER REMOTE CONDENSING UNIT	--	1	1	R-404A		200	15 A	6.5 A	208/3/60	WCS	GC	HARFORD	PCL99MOP-3	FURNISHED WITH WALK-IN COOLER
CU-2	SPLIT-SYSTEM CONDENSING UNIT	10	2	2	R-454B	27.5	500	50 A	41.6 A	208/3/60	HES	GC	YORK	WC120	FURNISHED WITH VIBRATION ISOLATORS, AND INTEGRAL UNIT-MOUNTED DISCONNECT
CU-3	SPLIT-SYSTEM CONDENSING UNIT	10	2	2	R-454B	27.5	500	50 A	41.6 A	208/3/60	HES	GC	YORK	WC120	FURNISHED WITH VIBRATION ISOLATORS, AND INTEGRAL UNIT-MOUNTED DISCONNECT

AIR HANDLING UNIT SCHEDULE

TAG	DESCRIPTION	NOMINAL CAPACITY [TONS]	EER	AIRFLOW			COOLING CAPACITY				NUMBER OF CIRCUITS	APPROXIMATE WEIGHT [lbs]	ELECTRICAL			FURNISHED BY	INSTALLED BY	BASIS FOR DESIGN		REMARKS	
				TOTAL [CFM]	OA [CFM]	ESP [in. W.C.]	NET TOTAL [MBH]	NET SENSIBLE [MBH]	EAT [Deg. F]	COND. EAT [Deg. F]			MOC	FLA	V/P/H			MANUFACTURER	MODEL		
				DB	WB																
AHU-1	KITCHEN SPLIT-SYSTEM AIR HANDLING UNIT	10	11.2	3500	600	0.8	118	72	75	65	94	1	500	15 A	11.3 A	208/3/60	HES	GC	YORK	GL120	FURNISHED WITH VIBRATION ISOLATORS AND MIXING BOX (PLENUMS INC YMBNC120 OR EQUAL)
AHU-2	DINING ROOM SPLIT-SYSTEM AIR HANDLING UNIT	10	11.2	3500	1100	0.8	126	68	79	70	94	1	500	15 A	11.3 A	208/3/60	HES	GC	YORK	GL120	FURNISHED WITH VIBRATION ISOLATORS AND MIXING BOX (PLENUMS INC YMBNC120 OR EQUAL)

KITCHEN HOOD SCHEDULE

TAG	DESCRIPTION	MAX COOKING TEMP.	AIRFLOW [CFM]	SP [in. W.C.]	EXHAUST PLENUM				PERFORATED SUPPLY PLENUMS								NUMBER OF LIGHT FIXTURES	APPROXIMATE WEIGHT [lbs]	FURNISHED BY	INSTALLED BY	BASIS FOR DESIGN		REMARKS			
					DUCT COLLARS				MAU PLENUM				AC PLENUM								MANUFACTURER	MODEL				
					NO.	WIDTH	LENGTH	LENGTH	WIDTH	SP [in. W.C.]	SUPPLY PLENUM LENGTH	SUPPLY PLENUM WIDTH	AIRFLOW [CFM]	NO.	WIDTH	LENGTH					AIRFLOW [CFM]	NO.		DIAMETER		
HD-1	TYPE I CANOPY HOOD WITH PERFORATED MAU AND AC SUPPLY PLENUMS	600°F	2600	0.97	1	10"	24"	12'-9"	4'-3"	0.1	13'-9"	19"	1300	3	6"	28"	700	6	8"	8	1100	HS	GC	CAPTIVE-AIRE	5424 ND-2-ACPPS-F	MAT'L: 18 GA. TYPE 430 SS. FURNISHED WITH VERTICAL END PANELS, 24V GAS VALVE, VAPORPROOF INCANDESCENT LIGHT FIXTURES, 16" TALL HE SS FILTERS, INTEGRAL UTILITY CABINET, KITCHEN EXHAUST SUPPRESSION SYSTEM, DUCT COLLAR TEMPERATURE SENSOR, PREWIRE PACKAGE, SPARE FIRE SYSTEM DRY CONTACT, AND 4-POLE 20A CONTACTOR

VENTILATION SCHEDULE

ROOM NAME	ROOM PURPOSE (per Table 403.3)	FLOOR AREA	ORDINANCE REQUIREMENTS				ACTUAL PROVIDED				EQUIPMENT		REMARKS
			NATURAL LIGHT AND VENTILATION (SF)		MECHANICAL VENTILATION (CFM)		NATURAL LIGHT & VENTILATION (SF)		MECHANICAL VENTILATION (CFM)		TAG OF EQUIPMENT SUPPLYING THE ROOM	TAG OF EQUIPMENT EXHAUSTING THE ROOM	
			GLASS AREA	VENT AREA	SUPPLY AIR	EXHAUST AIR (from room)	GLASS AREA	VENT AREA	SUPPLY AIR	EXHAUST AIR (from room)			
DINING ROOM	PUBLIC DINING ROOMS - NO COOKING EQUIPMENT	1060	--	--	1,590	1,590	-	-	3,500	2,400	AHU-2	-	*TRANSFER AIR/LEAKAGE
KITCHEN	KITCHENS, PUBLIC	578	--	--	694	2,312	-	-	1800	2,600	AHU-1/ MAU-1	EF-1	2,600 CFM EXHAUSTED THROUGH EF-1, 500 CFM VENTILATION AIR AND 1300 CFM MAKEUP AIR
UNISEX 1 RESTROOM	TOILET ROOMS	63	--	--	0	126	-	-	0	130	-	EF-3	EXHAUSTED THROUGH EF-3 SUPPLY IS VIA TRANSFER AIR FROM DINING
UNISEX 2 RESTROOM	TOILET ROOMS	126	--	--	0	252	-	-	0	270	-	EF-2	EXHAUSTED THROUGH EF-2 SUPPLY IS VIA TRANSFER AIR FROM DINING
OFFICE	OFFICE AND COMPUTER ROOMS	43	--	--	26	--	-	-	100	*100	AHU-1	-	*TRANSFER AIR
TRASH ROOM	TOILET ROOMS	86	--	--	0	172	-	-	0	180	MAU-1	EF-2	EXHAUSTED THROUGH EF-2 SUPPLY IS VIA TRANSFER AIR FROM DINING
DISPLAY	STORAGE INACTIVE	100	--	--	0	0	-	-	0	0	-	-	
HOOD EXHAUST CALCULATIONS			TOTAL		1,871	3,146			3,950	3,910			

HD-1: TYPE 1 HOOD
 Q = LENGTH OF HOOD X CFM/LINEAR FOOT (600 DEG. COOKING WITH END PANELS)
 Q = 12.75' X 170 CFM/FT = 2,167 CFM
 Q + 20% = 2,600 CFM REQUIRED | 2,600 CFM PROVIDED

Consultant:



4635 Trueman Blvd, Suite 250
 Hilliard, Ohio 43026
 Phone: (614) 751-9610
 Fax: (614) 552-5240
 Contact: Joe Jones
 (614) 328-2024
 jjones@nationalengineering.com

FOR CONSTRUCTION

COPYRIGHT 2025
 THIS DRAWING IS AN INSTRUMENT OF SERVICE AND AS SUCH REMAINS THE PROPERTY OF CHIPOTLE MEXICAN GRILL, INC. PERMISSION FOR USE OF THIS DOCUMENT IS LIMITED AND CAN BE EXTENDED ONLY BY WRITTEN AGREEMENT WITH CHIPOTLE MEXICAN GRILL, INC.



CHIPOTLE MEXICAN GRILL, INC.
 PO BOX 182566
 COLUMBUS, OH 43218-2566
 TELEPHONE: (614) 338-2400
 INTERNET: WWW.CHIPOTLE.COM

STORE NO.: 5749
 RAVENSWOOD
 1825 W. LAWRENCE AVE
 CHICAGO, IL 60640

Issue Record:
 2025/07/01 CLIENT REVIEW
 2025/08/18 PERMIT ISSUE
 2025/10/07 IFC SET

Revisions:
 3 2025/11/14 VALUE ENGINEERING REVS
 7 2025/12/18 MUA & MEZZANINE REVS
 8 2025/12/31 DUCT FAN REV

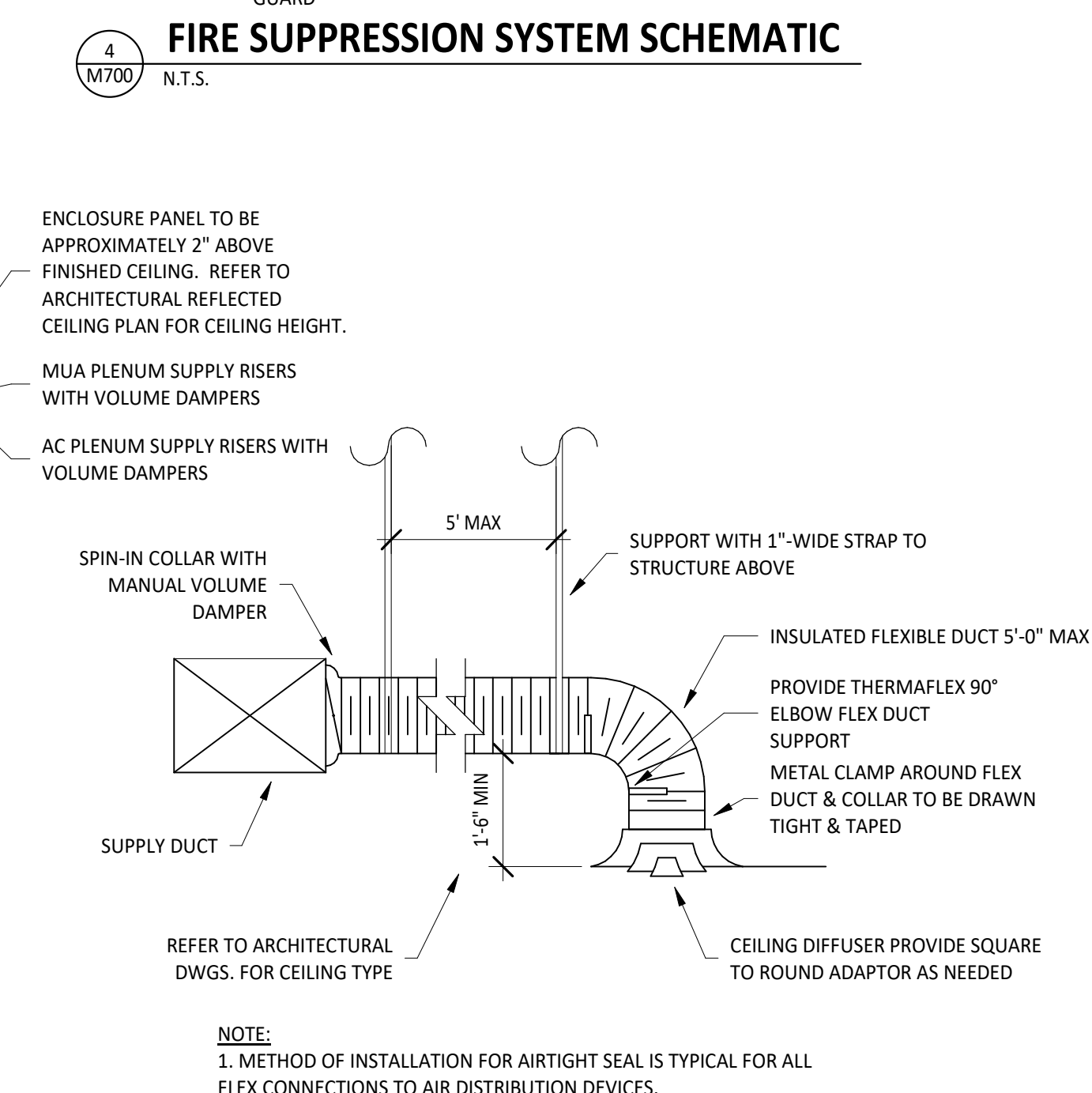
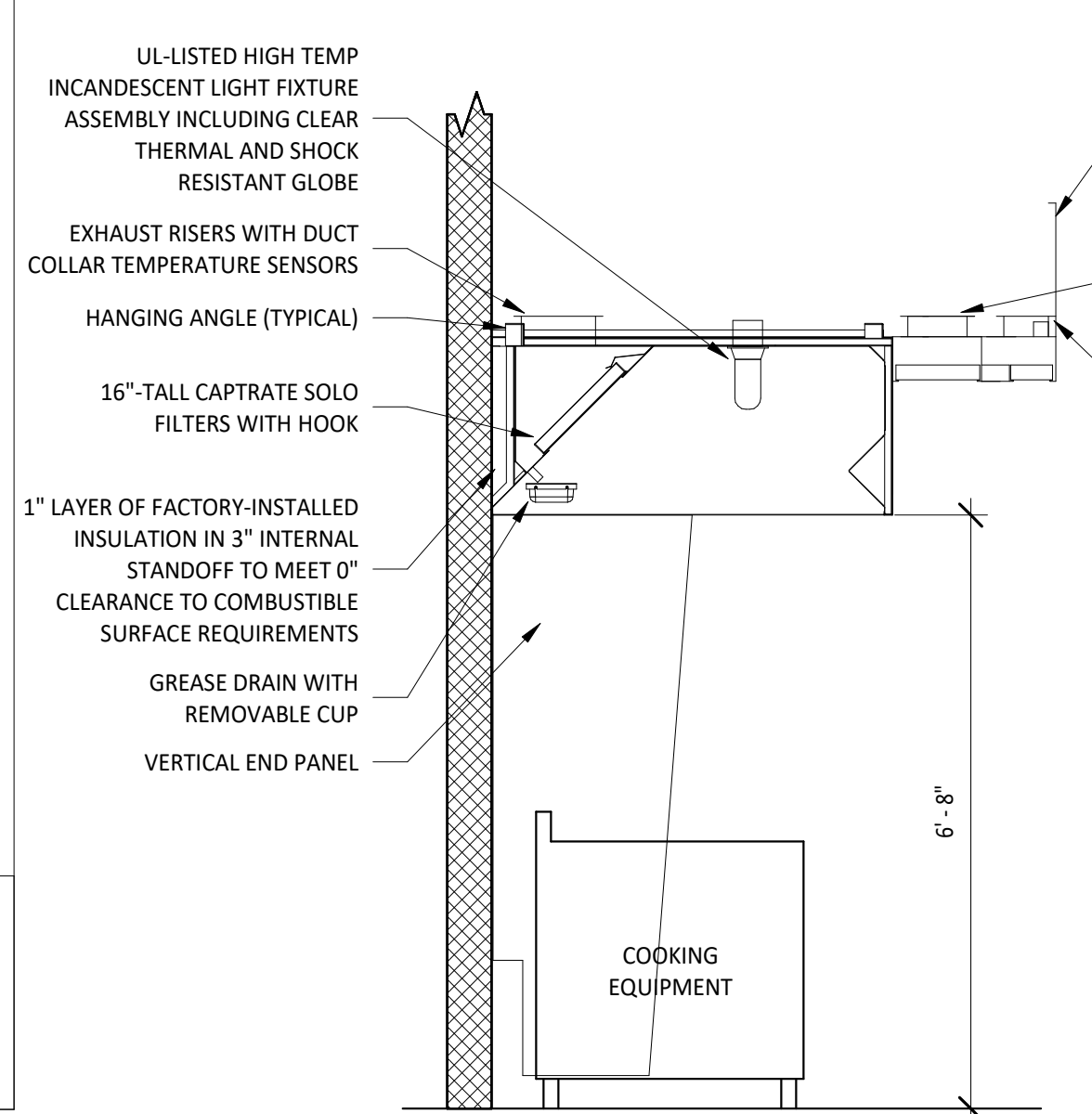
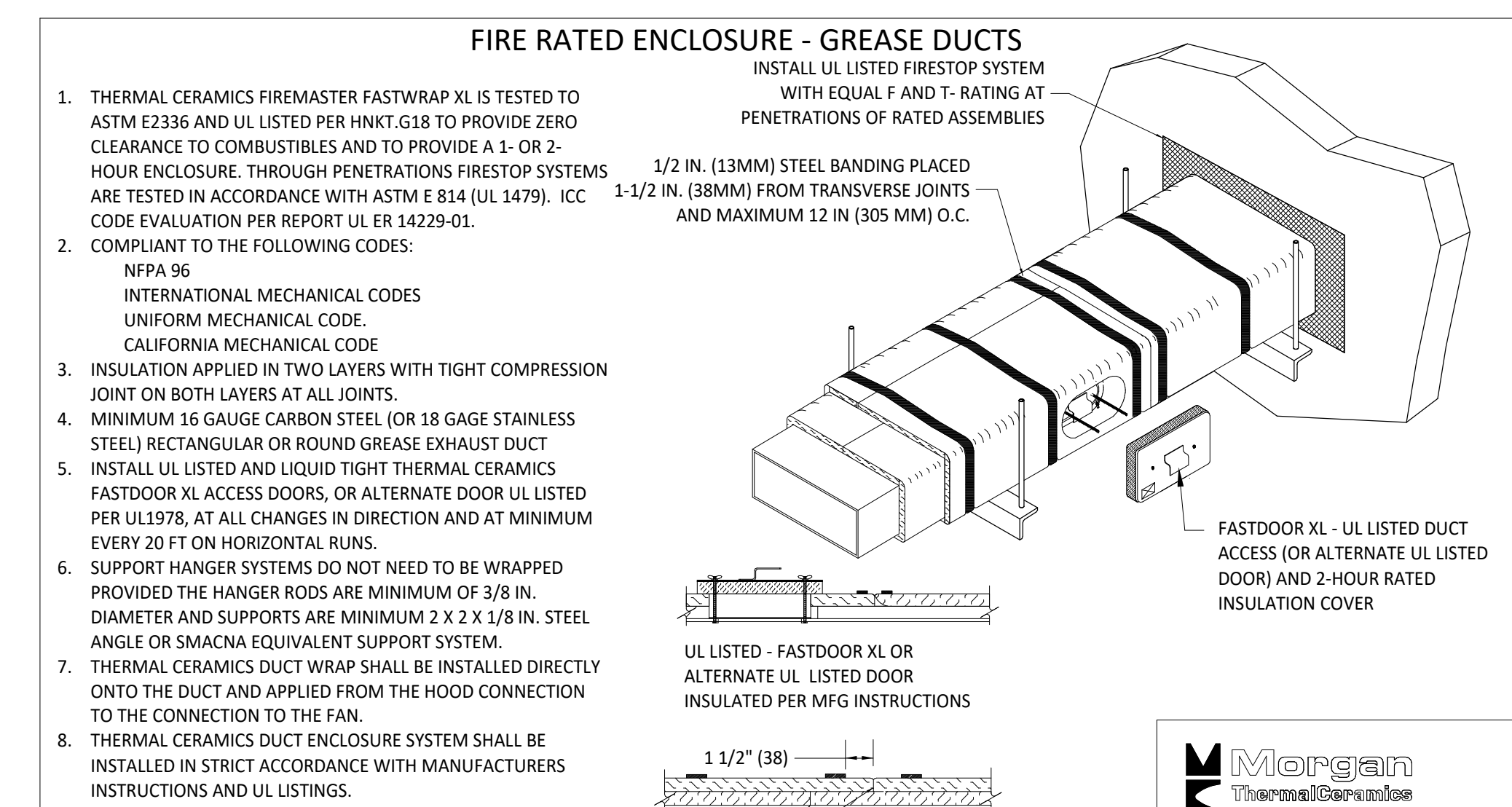
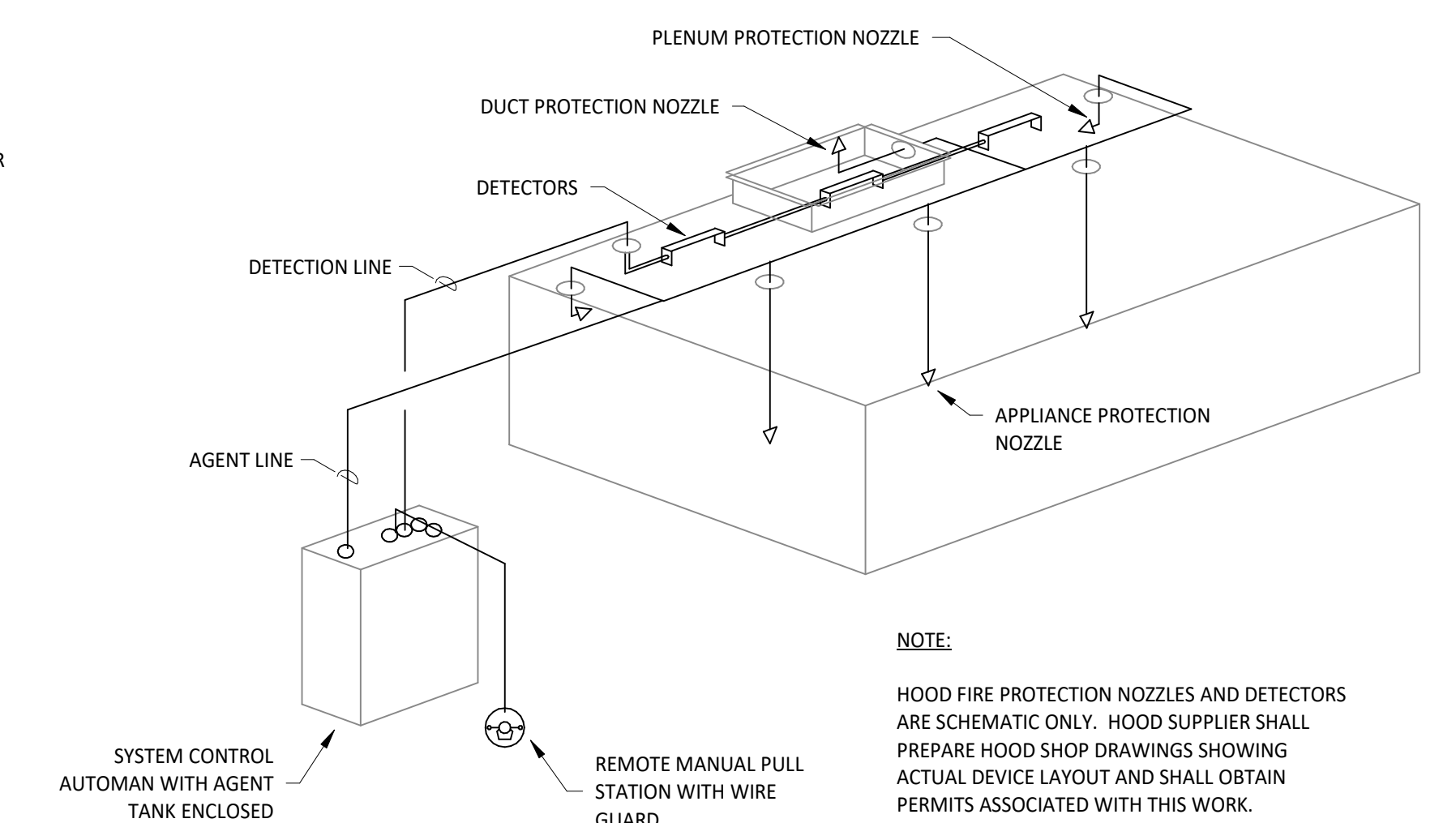
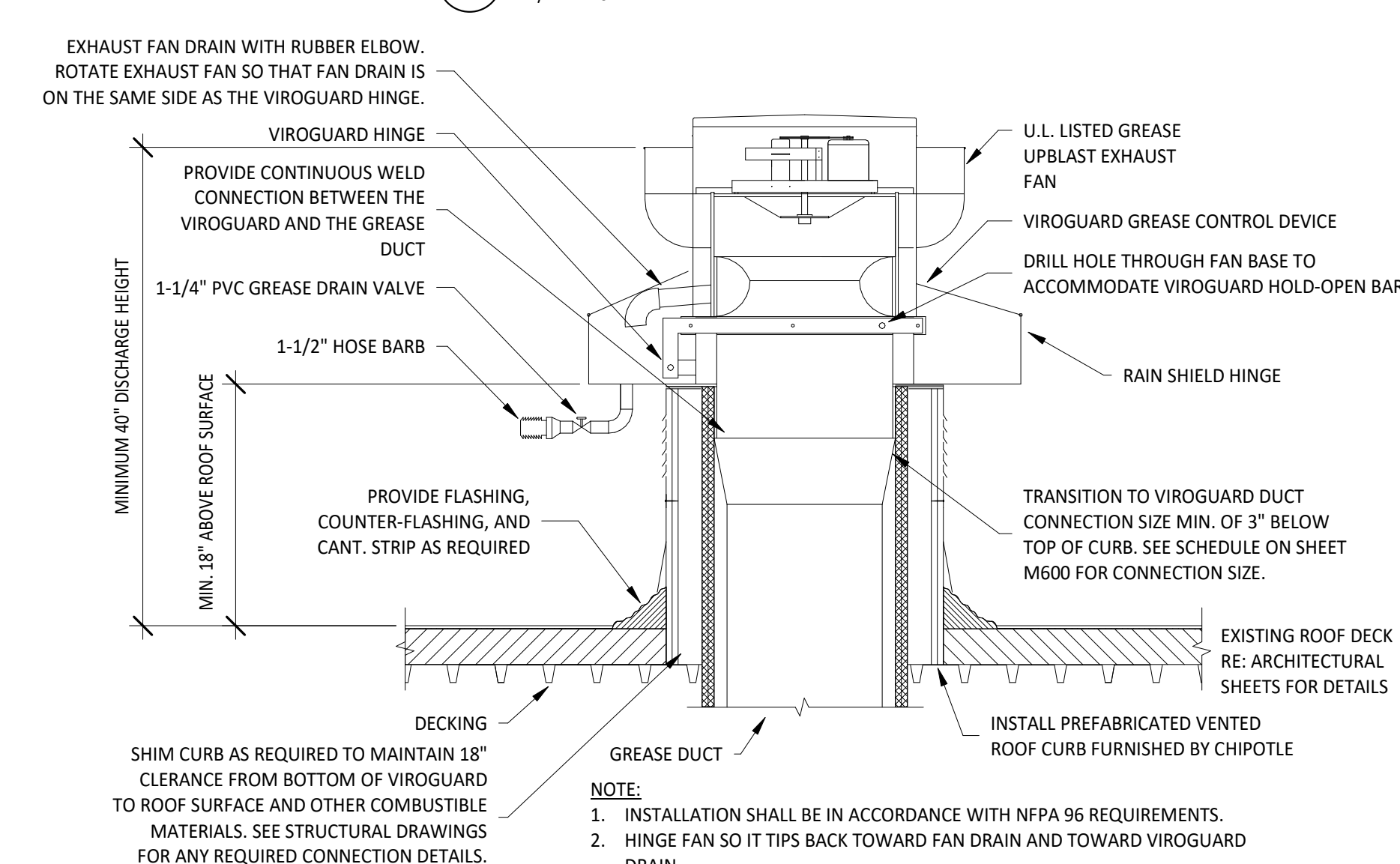
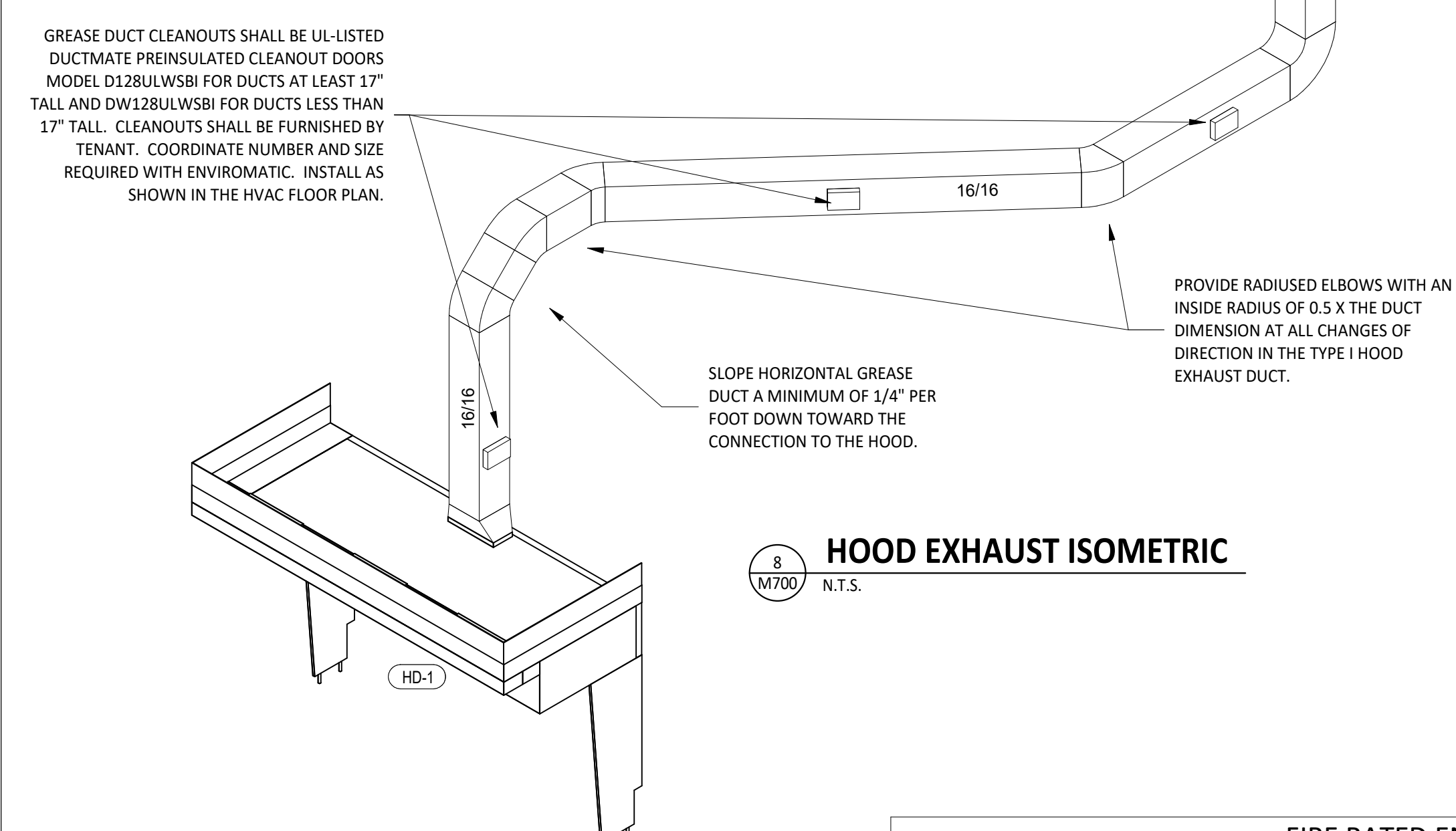
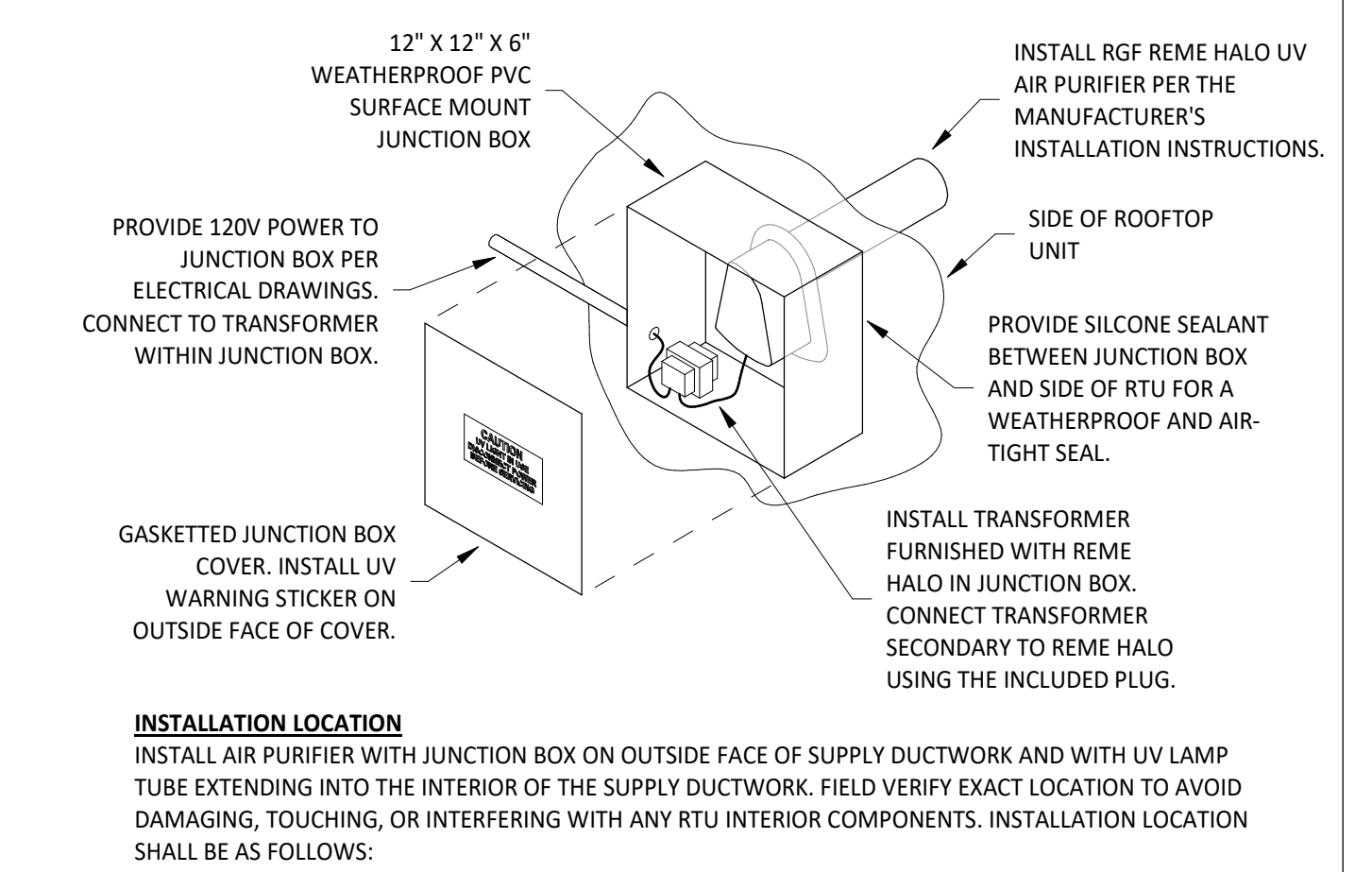
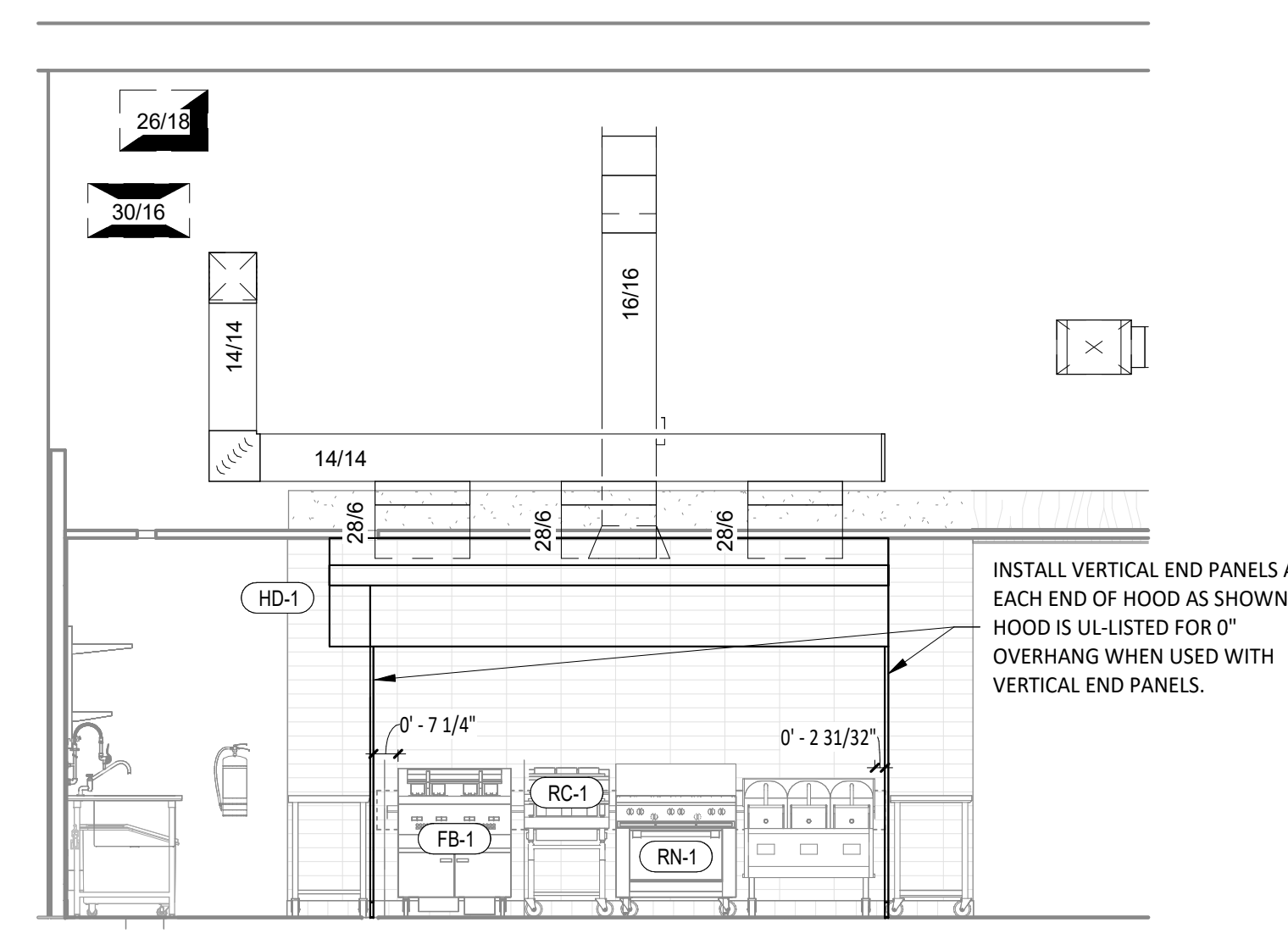
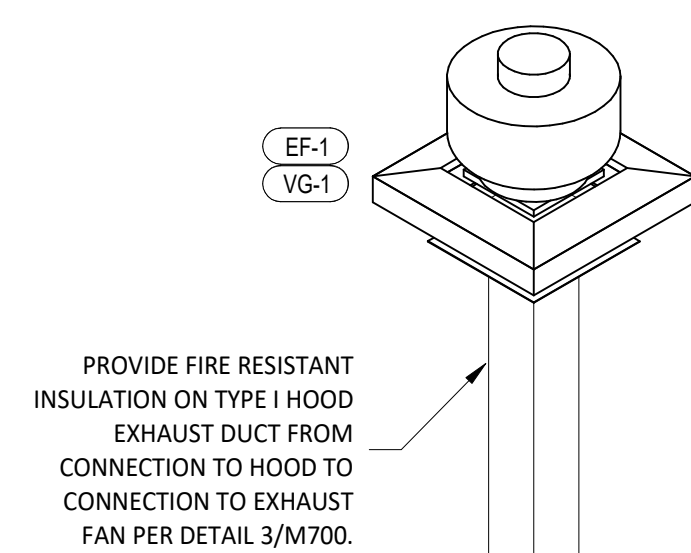
Drawn: JEJ
 Checked: RTJ

Project No:
 2401135

Contents:

HVAC SCHEDULES

M600



Consultant:
NATIONAL ENGINEERING
4635 Trueman Blvd, Suite 250
Hilliard, Ohio 43026
Phone: (614) 751-9610
Fax: (614) 552-5240
Contact: Joe Jones (614) 328-2024
jjones@nationalengineering.com

FOR CONSTRUCTION

COPYRIGHT 2025
THIS DRAWING IS AN INSTRUMENT OF SERVICE AND AS SUCH REMAINS THE PROPERTY OF CHIPOTLE MEXICAN GRILL, INC. PERMISSION FOR USE OF THIS DOCUMENT IS LIMITED AND CAN BE EXTENDED ONLY BY WRITTEN AGREEMENT WITH CHIPOTLE MEXICAN GRILL, INC.



STORE NO.: 5749
RAVENSWOOD
1825 W. LAWRENCE AVE
CHICAGO, IL 60640

Issue Record:	2025/07/01	CLIENT REVIEW
	2025/08/18	PERMIT ISSUE
	2025/10/07	IFC SET

Revisions:	7	2025/12/18	MUA & MEZZANINE REVS

Drawn: JEJ
Checked: RTJ

Project No:
2401135

Contents:
HVAC DETAILS

M700