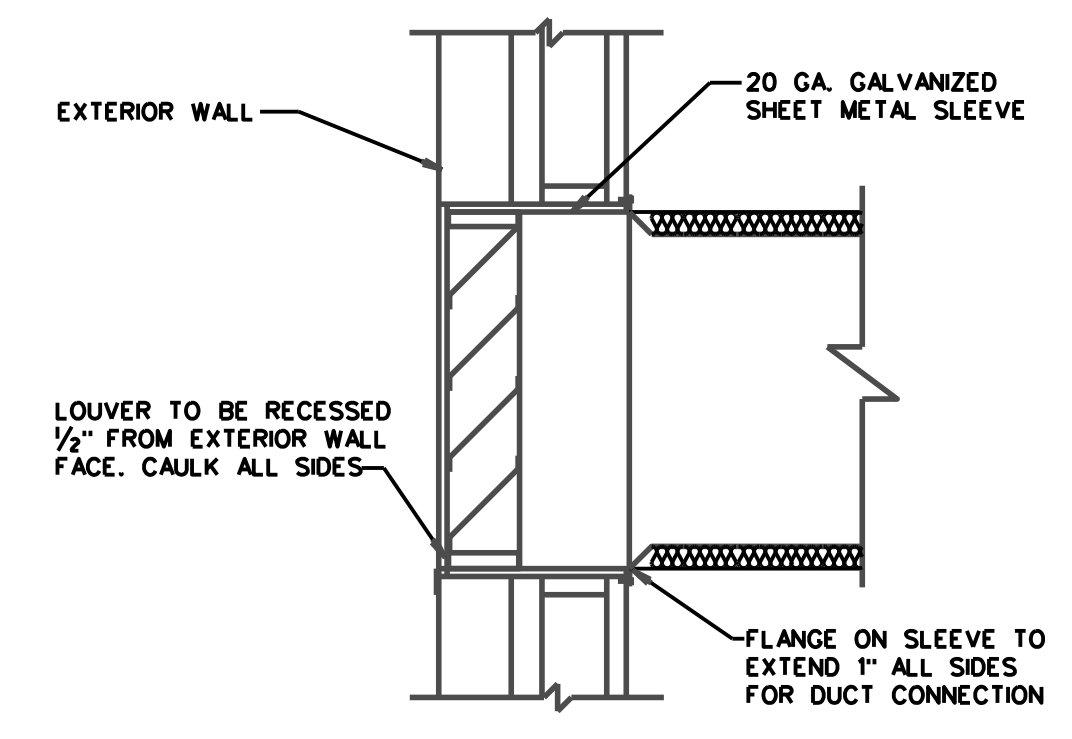
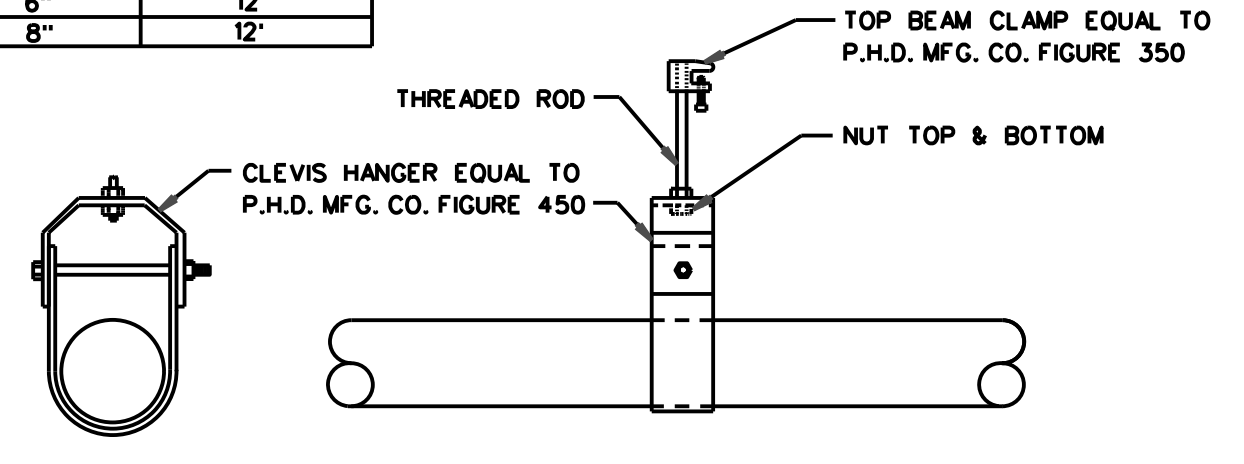


DIFFUSER DUCTING DETAIL
NOT TO SCALE

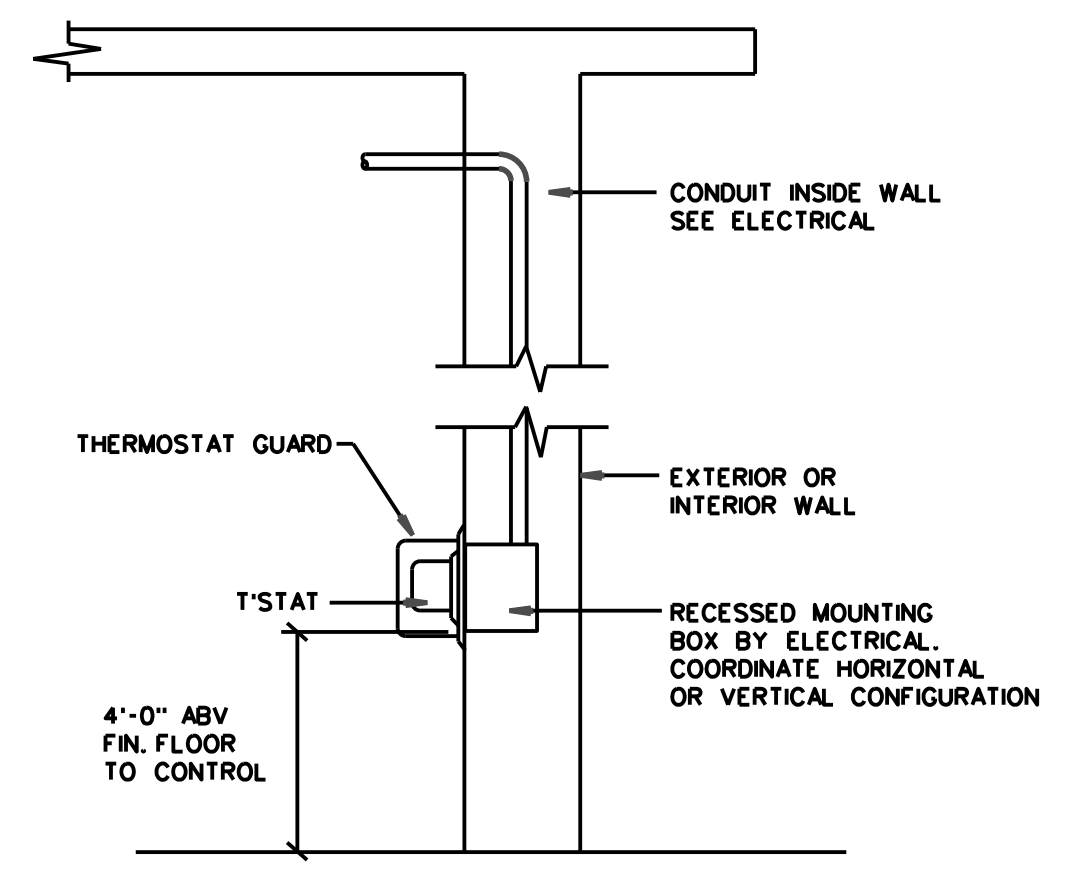


LOUVER MOUNTING DETAIL
NOT TO SCALE

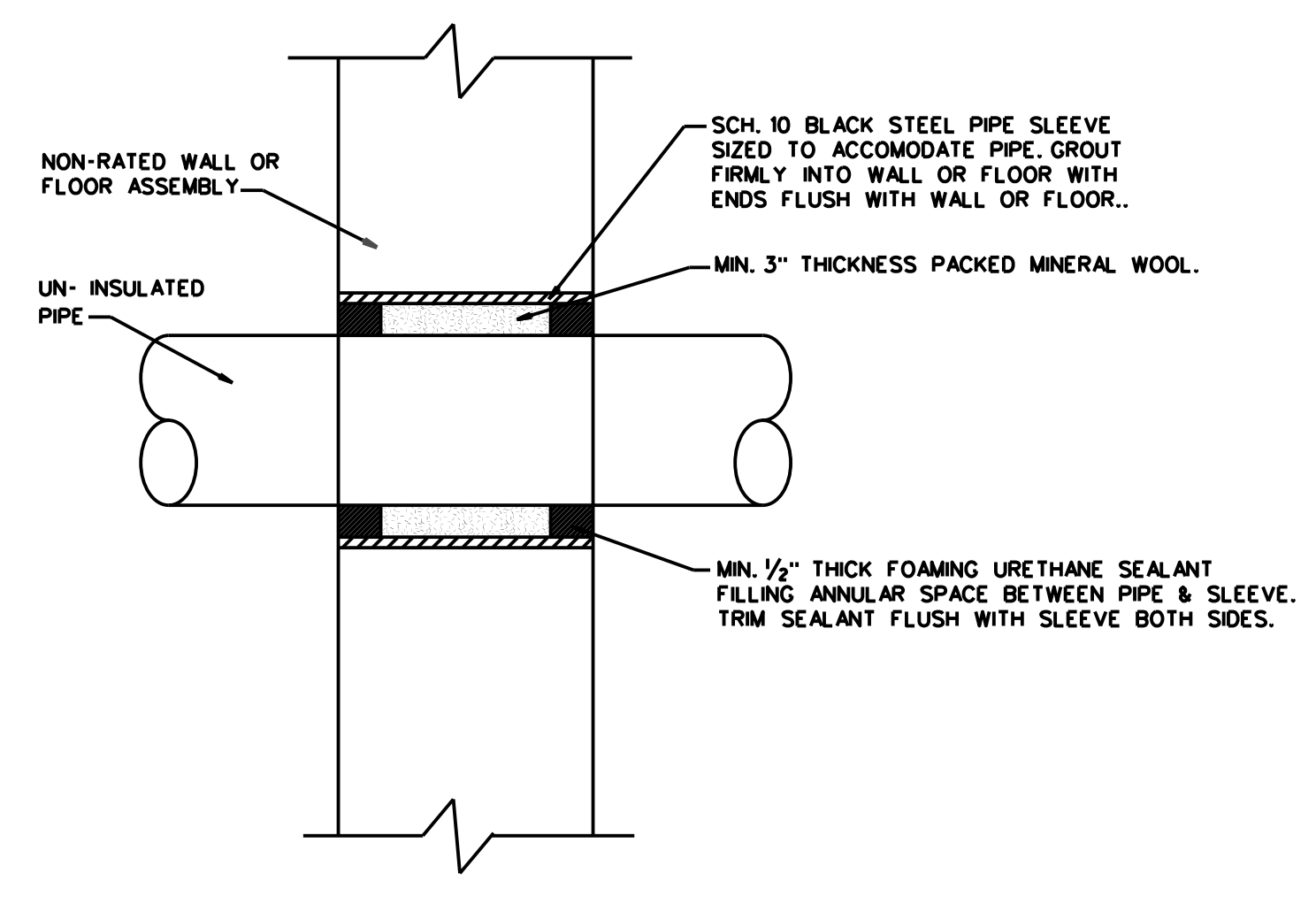
PIPE SIZE	HANGER SPACING
1/4"	6'
3/4"	6'
1"	8'
1 1/4"	8'
1 1/2"	8'
2"	10'
2 1/2"	10'
3"	12'
4"	12'
6"	12'
8"	12'



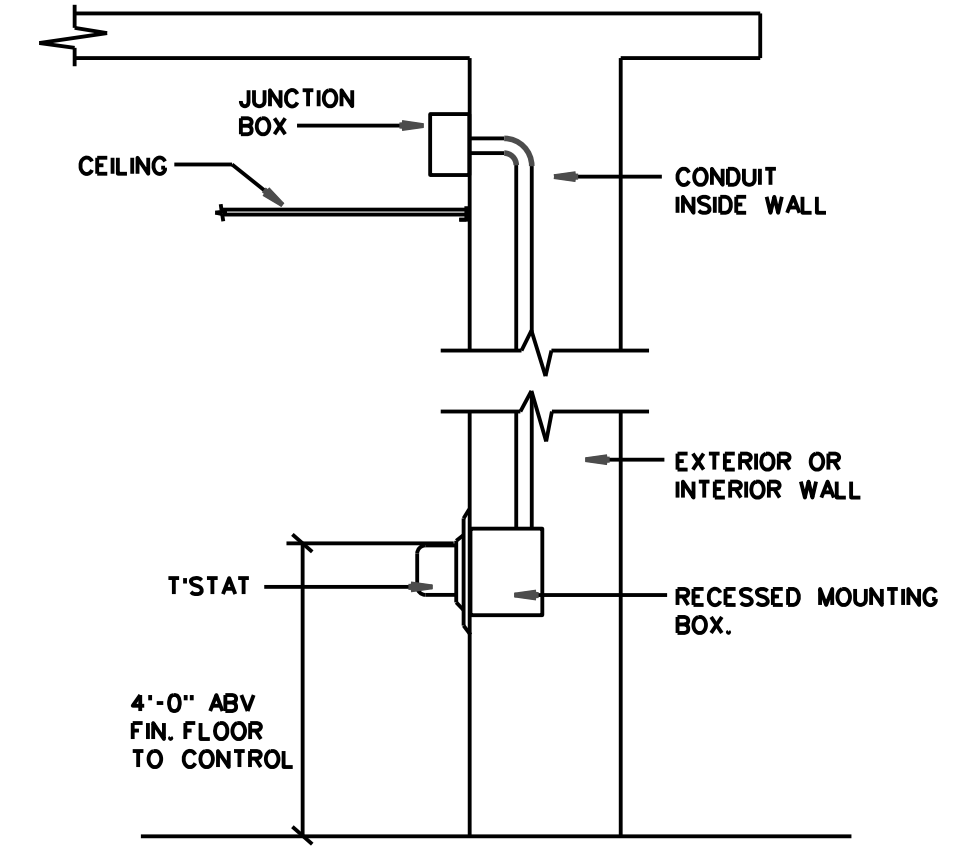
GAS PIPE HANGER DETAIL
NOT TO SCALE



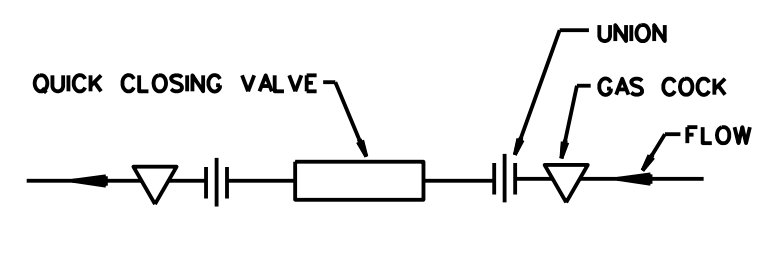
T'STAT MOUNTING DETAIL
NOT TO SCALE



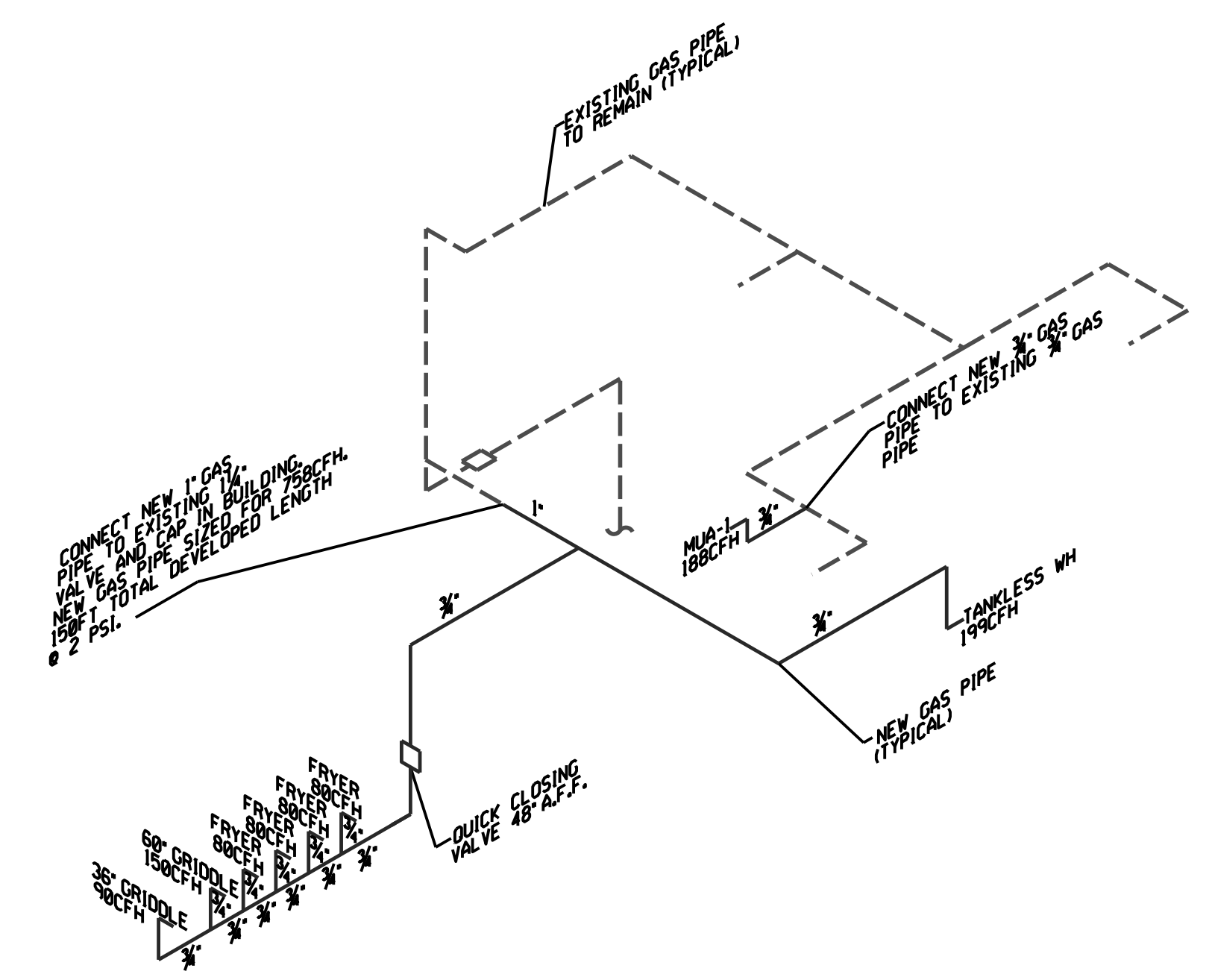
NON-RATED PIPE SLEEVE DETAIL
NOT TO SCALE



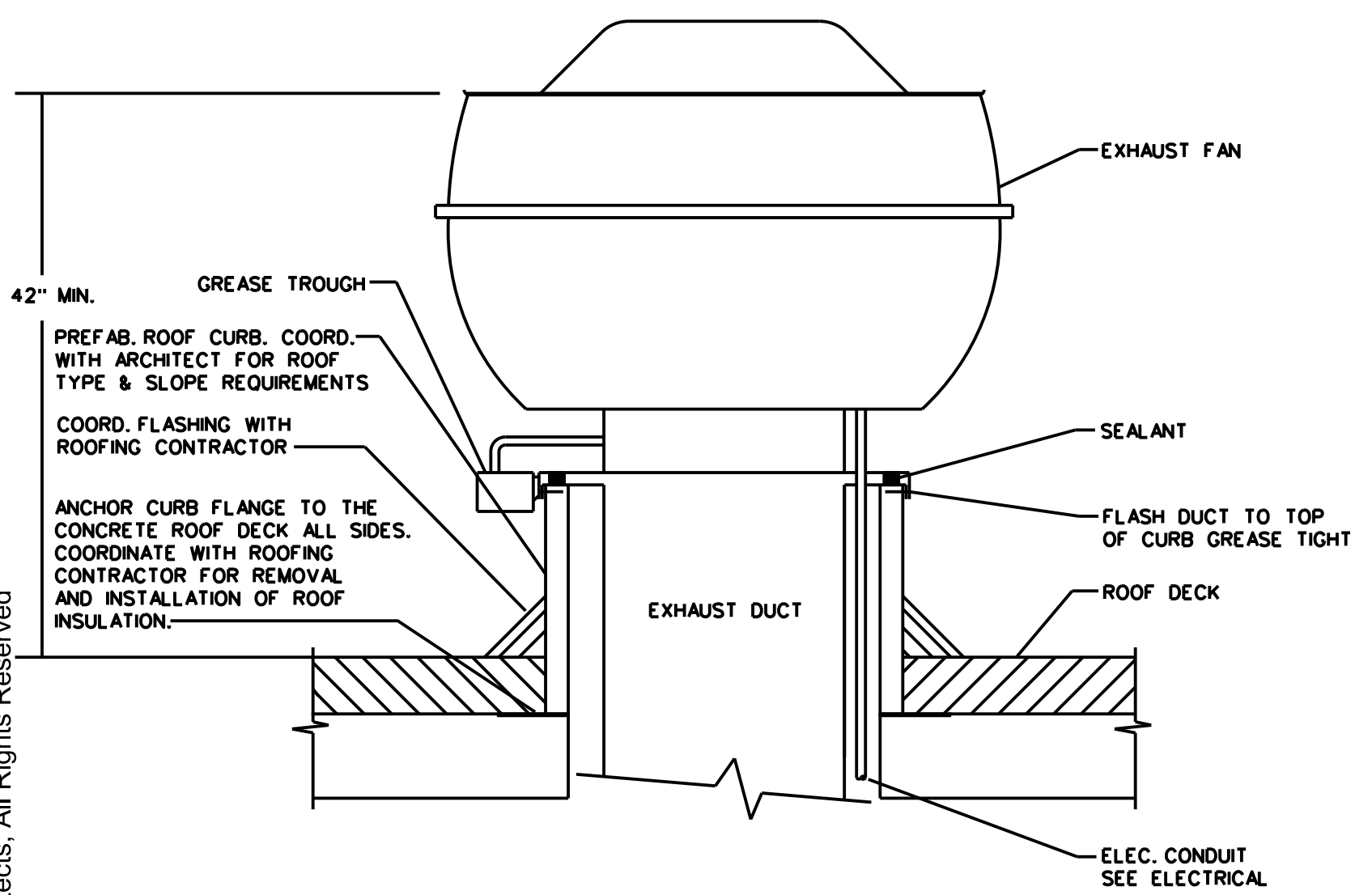
T'STAT MOUNTING DETAIL
NOT TO SCALE



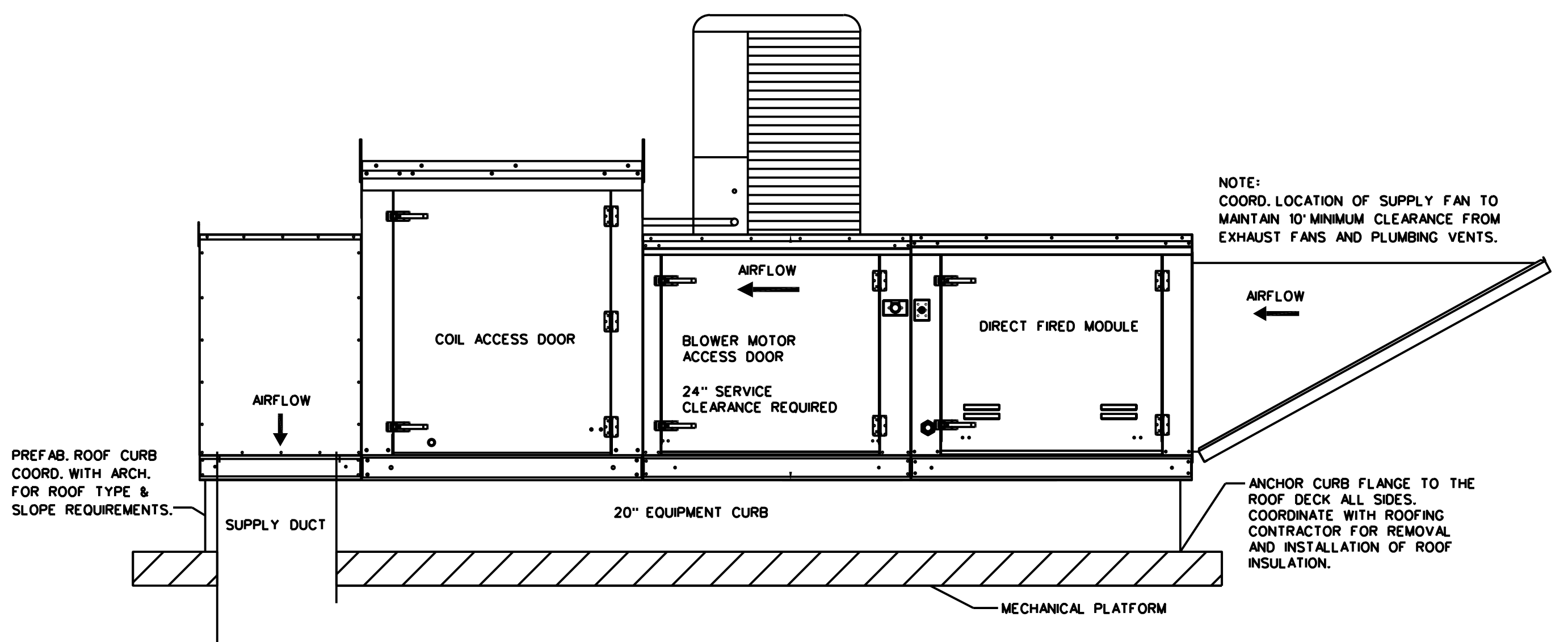
TYPICAL ASSEMBLY QUICK CLOSING VALVE
NOT TO SCALE



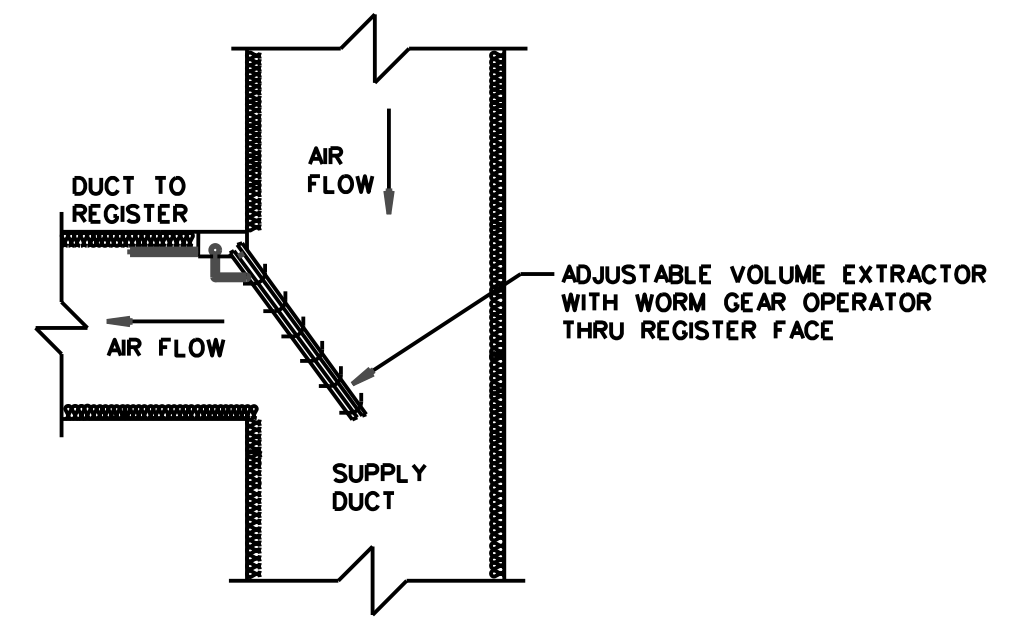
GAS PIPING DIAGRAM
NOT TO SCALE



RANGE HOOD EXHAUST FAN DETAIL
NOT TO SCALE



RANGE HOOD MAKE UP AIR UNIT DETAIL
NOT TO SCALE



VOLUME EXTRACTOR DETAIL
NOT TO SCALE

Revision Schedule	
Rev. 3 Clarifications	6/14/21
Rev. 4 Fire Marshall Comments	9/29/21
Rev. 5 Range Hood Change	10/24/21



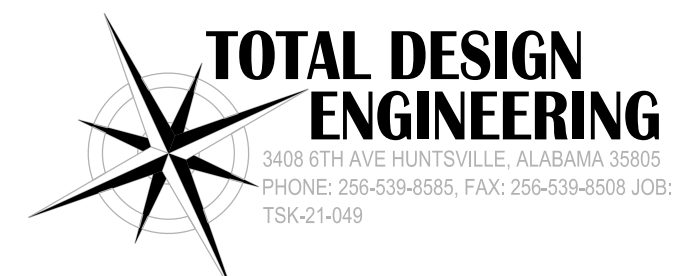
HH Architects, Inc.
We Believe | We Serve | We Create
2021 Lakeside Blvd | Suite 1100
Richardson Texas 75082
972-404-1034



FIVE GUYS
100 MOON SHOT DRIVE STE 110
MADISON, AL 35758

HH2015 04/06/2021
Construction Documents
**MECHANICAL
DETAILS &
GAS DIAGRAM**

M2.0



©HHArchitects, All Rights Reserved

INFORMATION PROVIDED BY MARSHALL AIR

GRIDDLE AND FRYER HOOD VENTILATION SYSTEM HOODS 1A, 1B										FIRE PROTECTION SYSTEM GRIDDLE HOOD AND FRYER HOOD										MAKEUP AIR SUPPLY SYSTEM GRIDDLE HOOD AND FRYER HOOD											
SUPPLIED BY:										SUPPLIED BY:										SUPPLIED BY:											
QTY	PART NO.	DESCRIPTION	M	G	I	E	F	H	P	QTY	PART NO.	DESCRIPTION	M	G	I	E	F	H	P	QTY	PART NO.	DESCRIPTION	M	G	I	E	F	H	P		
2	BG3	HOOD, LOW PROFILE 108" W/ MUA BACKWALLS W/ LIGHTS	X							1		6.0 GALLON ANSUL SYSTEM CONSISTING OF:	X							1		HEATED/COOLED MAKEUP AIR FAN	X								
2		INSTALL HOOD		X						1	503203	3.0 GALLON ANSUL AUTOMAN REG. RELEASE ASSEMBLY #79290	X							1		MUA DISTRIBUTION DROP	X								
1		5/5 STACK COVERS FROM HOOD TOP TO CEILING (STANDARD CEILING HEIGHT 10'0")	X							1	503205	3.0 GAL ANSUL CYLINDER W/ MOUNTING BRACKET	X							1		CUT OPENINGS IN DIST. DROP FOR MUA TRUNK LINE		X							
1		2" VERTICAL GAS LINE IN HOOD BACKWALL	X							2	503221	3.0 GALLON ANSULEX AGENT #79372	X							AS REQD		10" DIA FLEX DUCT OR PIPE, CHECK LOCAL CODES.		X							
1		5/5 PANELS FROM BACKWALL BOTTOM TO FLOOR	X							4	500346	500 DEGREE DETECTOR LINK #56816	X							1		ROOF CURB FOR SUPPLY FAN	X								
6		RECEPTACLES FOR COOKING EQUIP. (5 DUPLEX, 1 SINGLE 20A)	X							3	500345	360 DEGREE DETECTOR LINK #415745	X							AS REQD		DUCT SUPPORTS AND HANGERS		X							
12	502271	FILTER, GREASE SS 1616 6 PER HOOD	X							1	503168	REMOTE MANUAL PULL #4835	X							AS REQD		TRUNK LINES FROM DISTRIBUTION DROP								X	
2	149132	GREASE CUP STN STL 2 PER HOOD	X							1	503442	REMOTE MANUAL PULL BOX 4" OCTAGONAL, RACO #165	X							1		INSTALL FAN AND START-UP		X							
1		GAS LINE TO HOOD BACKWALL PIPE						X	2	500354	DETECTOR CABLE #79653 100 FT. LENGTH	X							1		INSURE PROPER FAN ROTATION			X							
1		GAS DISTRIBUTION PIPING UNDER HOOD BACKWALL						X	1	503406	ANSUL ELECTRIC SWITCH #32220 4PDT - FIELD INSTALLED	X							1		MOTOR STARTER		X								
1		HOOD FIRE PROTECTION PIPING	X							1	500352	CORNER PULLEY ELBOWS #415671	X						1		ELECTRICAL HOOK-UP				X						
1		ANSUL FIELD CONNECTION OF FIRE SYSTEM AND TAGGING				X				1	500360	CO2 CARTRIDGE FOR AUTOMAN 101-30 #15851	X						1		GAS HOOKUP									X	
2		STACK 12" x 12" 13FT. LONG 16GA. HRS	O							1	503403	ANSUL DOUBLE TANK CARTRIDGE	X						1		DISCONNECT SWITCH		X								
1		STACK OFFSET W/ ACCESS COVERS - 12" x 12" (F REQ'D.)				X				1	503407	GAS VALVE 2" MECHANICAL W/ CYLINDER AND TUBING	X						1		PROVIDE ROOF OPENING/PATCH		X								
1		CUT STACK TO LENGTH AND FIELD WELD		X			X					HOOD PREPPING WITH NOZZLES FACTORY INSTALLED IN HOOD	X						1		INSTALL DUCTWORK TO HOODS		X								
1	Z2	FAN EXHAUST GREASE EXTR EF-1A WITH TRANSITION	X							1	503217	DETECTOR BRACKET TERMINAL FACTORY INSTALLED IN HOOD	X									COMPLETE STORE AIR BALANCE AND RETURN FIELD STARTUP FORM TO MAS TO VALIDATE WARRANTY.		X							
1		PROVIDE AND INSTALL ROOF BARS 4" x 4" x 6 FT PRESSURE TREATED WOOD	X							6	503176	DETECTOR BRACKETS SERIES FACTORY INSTALLED IN HOOD	X																		
1	500192	ELECT DISCONNECT SW MOUNTED TO FAN	X							AS REQD		3/8" B.L.P PIPE, SCH 40 FOR SUPPLY LINES					X														
1		INSTALL FAN AND START-UP		X						AS REQD		3/8" B.L.P. PIPE FITTINGS FOR SUPPLY LINES					X														
1		INSURE PROPER FAN ROTATION			X					AS REQD		1/2" EMT TUBE FOR DETECTOR LINE					X														
AS REQD		DRAIN LINE 2" COPPER TUBE								1		INSTALL SYSTEM PIPING AND SYSTEM COMPONENTS					X														
1		DRAIN LINE HEATER (KIT)	X							1		BURST DISC FOR MANIFOLD PIPING					X														
1		INSTALL LINE HEATER			X					1		INSTALL GAS VALVE					X														
1	105815	GREASE CUP (FOR DRAIN LINE) 5.75" x 5.75" x 12" HIGH	X							1		CONNECT GAS VALVE TO RELEASE					X														
1	103113	MOUNTING BRACKET FOR GREASE CUP	X							1		INSTALL REMOTE MANUAL PULL AND CONDUIT OUT OF TOP OF WALL.					X														
1		INSTALL GREASE CUP BENEATH DRAIN LINE			X					1		INSTALL REMOTE PULL PROTECTOR					X														
1	109924	CURB, 24" x 24" x 16"	X							AS REQD		FIRE EXTINGUISHERS AS REQUIRED BY AHJ					X														
1		INSTALL CURB		X								PULL PERMITS					X														
1		FLASHING, NO CUTOUT 24.500" x 24.500"	X									TEST FIRE SYSTEM					X														
1		INSTALL FLASHING CUT OPENING FOR STACK WELD FLASHING TO STACK			X							TAG FIRE SYSTEM					X														
1		DRAIN LINE PITCH POCKET		X																											
1	504132	FAN EXHAUST BCRUR-160 EF-1B	X																												
1		ELECT DISCONNECT SW MOUNTED TO FAN	X																												
1		INSTALL FAN AND START-UP			X																										
1		INSURE PROPER FAN ROTATION				X																									
1		CURB, 23.5" x 23.5" x 25"	X																												
1		INSTALL CURB		X																											
1		GREASE CUP MOUNTED TO ROOF CURB	X																												
2		PROVIDE ROOF OPENING		X																											
1		FAN/FIRE SYSTEM INTERLOCK PANEL W/ EXH FAN AND MUA FAN SWITCHES	X																												
1		ELECTRICAL HOOK-UP				X																									
1		TEST HOOD CFM, EXHAUST FAN, SUPPLY FAN					X																								
1		COMPLETE STORE AIR BALANCE AND RETURN FIELD STARTUP FORM TO MAS TO VALIDATE WARRANTY.	X																												

"SUPPLIED BY" SYMBOLS:
 M - MARSHALL AIR SYSTEMS
 O - OPTIONAL BY MARSHALL AIR SYSTEMS
 C - GENERAL CONTRACTOR
 I - HOOD INSTALLER
 E - ELECTRICIAN
 F - FIRE SYSTEM INSTALLER
 H - HVAC CONTRACTOR
 P - PLUMBER

Marshall Air Systems, Inc.
 419 Peachtree Drive South
 Charlotte, NC 28217
 (704)-525-6230

This drawing is the property of Marshall Air Systems, Inc., and contains confidential and proprietary information of Marshall Air Systems, Inc. This drawing is provided to the recipient on loan only for purposes of reference, installation, use and/or maintenance of the depicted equipment of Marshall Air Systems, Inc., and for no other purpose. This drawing shall not be copied, reproduced, loaned, disposed of or otherwise disclosed to any third party, either directly or indirectly except in carrying out the aforesaid purposes, and shall be returned to Marshall Air Systems, Inc., upon request. The recipient's acceptance of this drawing shall be deemed to constitute express consent and agreement to the foregoing terms.

IMPORTANT CURB/FAN INSTALLER

24"x24"x16" CURB MUST BE LOCATED OVER THE GRIDDLE LOCATION. THE 23.5" x 23.5" CURB MUST BE LOCATED OVER FRYERS. YOU MUST REFER TO THE EQUIPMENT PLAN TO DETERMINE WHETHER GRIDDLES ARE ON RIGHT OR LEFT SIDE.

HOOD AIR BALANCE SCHEDULE											
HOOD	DESCRIPTION	EXHAUST	MAKEUP AIR	HOOD CONNECTION SIZE	DUCT VELOCITY	FAN MODEL NUMBER	FAN NO.	HORSEPOWER	VOLTAGE	FAN WEIGHT	CURB
1A	108" LOW PROFILE HOOD (GRIDDLES)	1837	1195	12.250" x 12.250"	1837 FPM	MARSHALL GREASE EXTRACTOR MODEL G1530	EF-1A	3	208V 3PH	400 LBS	24" x 24"
1B	108" LOW PROFILE HOOD (FRYERS)	1837	1195	12.250" x 12.250"	1837 FPM	TWIN CITY CENT. UPBLAST MODEL BCRUR-160	EF-1B	3/4"	115V 1PH	120 LBS.	23.5" x 23.5"
	SUPPLY FAN	0	2390			ABSOLUT-AIRE V2-HOXDXP	SF-1	2.0	208V 3PH	495 LBS	29" x 29"
TOTAL		3674	2390								

* SOME LOCATIONS ARE SUPPLIED WITH FANS THAT HAVE 1HP MOTORS FOR POSSIBLE SITE SPECIFIC ADJUSTMENTS.

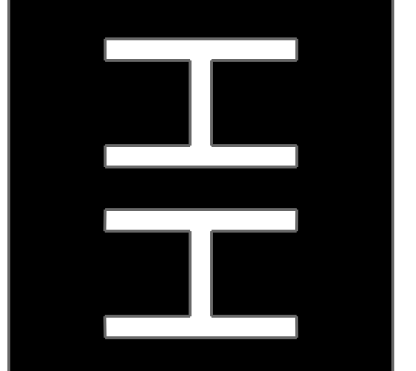
EXHAUST HOOD IS ETL* LISTED TO CONFORM TO UL 710 SPECS. IN ADDITION TO CERTIFYING ADEQUATE EXHAUST LEVELS, UL ALSO CERTIFIES COMPLIANCE WITH NFPA 96 CONSTRUCTION REQUIREMENTS.
 HOOD LISTED MODEL GA-108-MUA LISTED OVERHANG HOOD SIDES: 2" MINIMUM FROM COOKING SURFACE.
 LISTED OVERHANG HOOD FRONT: .5" MINIMUM FROM COOKING SURFACE.
 6" OVERHANG NOT REQUIRED PER UL710 APPROVAL.
 LISTED EXHAUST CFM: 148 PER FOOT OF COOKING SURFACE MINIMUM.
 COOKING SURFACE TEMPERATURE: 400°F (GRIDDLES, FRYERS)
 *ETL IS A NATIONALLY RECOGNIZED TESTING LAB AND IS A DIVISION OF INTERTEK. FOR MORE INFORMATION, VISIT THEIR WEBSITE WWW.INTERTEK-ETLSEMO.COM.

ACCEPTED FOR USE
 CITY OF NEW YORK
 DEPARTMENT OF BUILDINGS
 MEA 3-07-E

- NOTES
- HOOD CONSTRUCTION AND DESIGN MEETS INTERNATIONAL MECHANICAL CODE AS WELL AS UNIFORM MECHANICAL CODE, SBCCI, BOCA, ICBO AND NFPA 96 CONSTRUCTION REQUIREMENTS.
 - ALL HOODS ARE MANUFACTURED ACCORDING TO NATIONAL SANITATION FOUNDATION STANDARDS.
 - ALL INSTALLATION WORK IS TO BE PERFORMED BY QUALIFIED PERSONS AND IN ACCORDANCE WITH STATE AND LOCAL BUILDING CODE REQUIREMENTS.
 - ALL STACKS ABOVE THE ROOF LINE SHOULD BE PAINTED.
 - MATERIAL: HOODS: HOODS ARE CONSTRUCTED OF STAINLESS STEEL #18 GA (.043) THICK MINIMUM. ALL HOOD SEAMS HAVE A LIQUID TIGHT CONTINUOUS EXTERNAL WELD WHERE REQUIRED PER NFPA 96.
 - MATERIAL: EXHAUST STACKS: 16GA. MIN. STEEL WITH JOINTS HAVING A LIQUID TIGHT CONTINUOUS EXTERNAL WELD WHERE REQUIRED PER NFPA 96.
 - MATERIAL: HOOD GREASE FILTERS: GREASE FILTERS ARE ONE OF THE FOLLOWING TYPES:
 (A) FLAME GARD, INC., STAINLESS STEEL UL CLASSIFIED FILE # R 6593
 (B) KASON INC., STAINLESS STEEL UL CLASSIFIED FILE # R 13192
 - CLEARANCE FROM STACKS TO COMBUSTIBLE MATERIAL SHALL BE 18". LIMITED COMBUSTIBLE SHALL BE 3" AND NON-COMBUSTIBLE SHALL BE 0". A CLEARANCE REDUCTION SYSTEM PER NFPA96 MAY BE INSTALLED IF APPROVED BY LOCAL AUTHORITY.
 - KITCHEN CEILING HEIGHT = 10' - 0" (120").
 - HOODS ARE PRE-PIPED FOR ANSUL FIRE SYSTEM
 - RESPONSIBILITY OF OTHERS:
 PLUMBING
 CARPENTRY
 ROOF PENETRATIONS
 CURB FLASHINGS
 CURB SEALING
 SERVICE PLATFORMS
 HANDRAILS
 FIRE CHASES
 FIRE WRAP
 STRUCTURAL ENGINEERING
 STRUCTURAL STEEL
 BLUELINE DRAWINGS
 BUILDING PERMITS
 ANY ELECTRIC
 - RECEIVE AND UNLOAD FREIGHT, FORKLIFT REQUIRED.
 - ANY FREIGHT DAMAGE MUST BE NOTED ON BILL OF LADING. CONTACT MARSHALL AIR IMMEDIATELY FOR FURTHER INSTRUCTIONS.
 - COMPLETE STORE HVAC AIR BALANCE. FAILURE TO DO WILL RESULT IN INCORRECTLY FUNCTIONING SYSTEM AND MARSHALL AIR SYSTEMS CANNOT BE RESPONSIBLE FOR EXHAUST SYSTEM PERFORMANCE.



HH Architects, Inc.
 We Believe | We Serve | We Create
 2021 Lakeside Blvd | Suite 1100
 Richardson Texas 75082
 972-404-1034

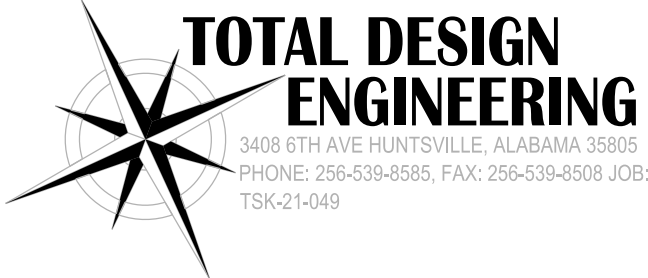


FIVE GUYS
 100 MOON SHOT DRIVE STE 110
 MADISON, AL 35758

HH2015 04/06/2021

Construction Documents
 RANGE
 HOOD
 DETAILS

M3.0



3408 6TH AVE HUNTSVILLE, ALABAMA 35895
 PHONE: 256-538-8885, FAX: 256-538-8508, JOB: TSK-21-049

INFORMATION PROVIDED BY MARSHALL AIR



HH Architects, Inc.
 We Believe | We Serve | We Create

2021 Lakeside Blvd | Suite 1100
 Richardson, Texas 75082
 972-404-1034

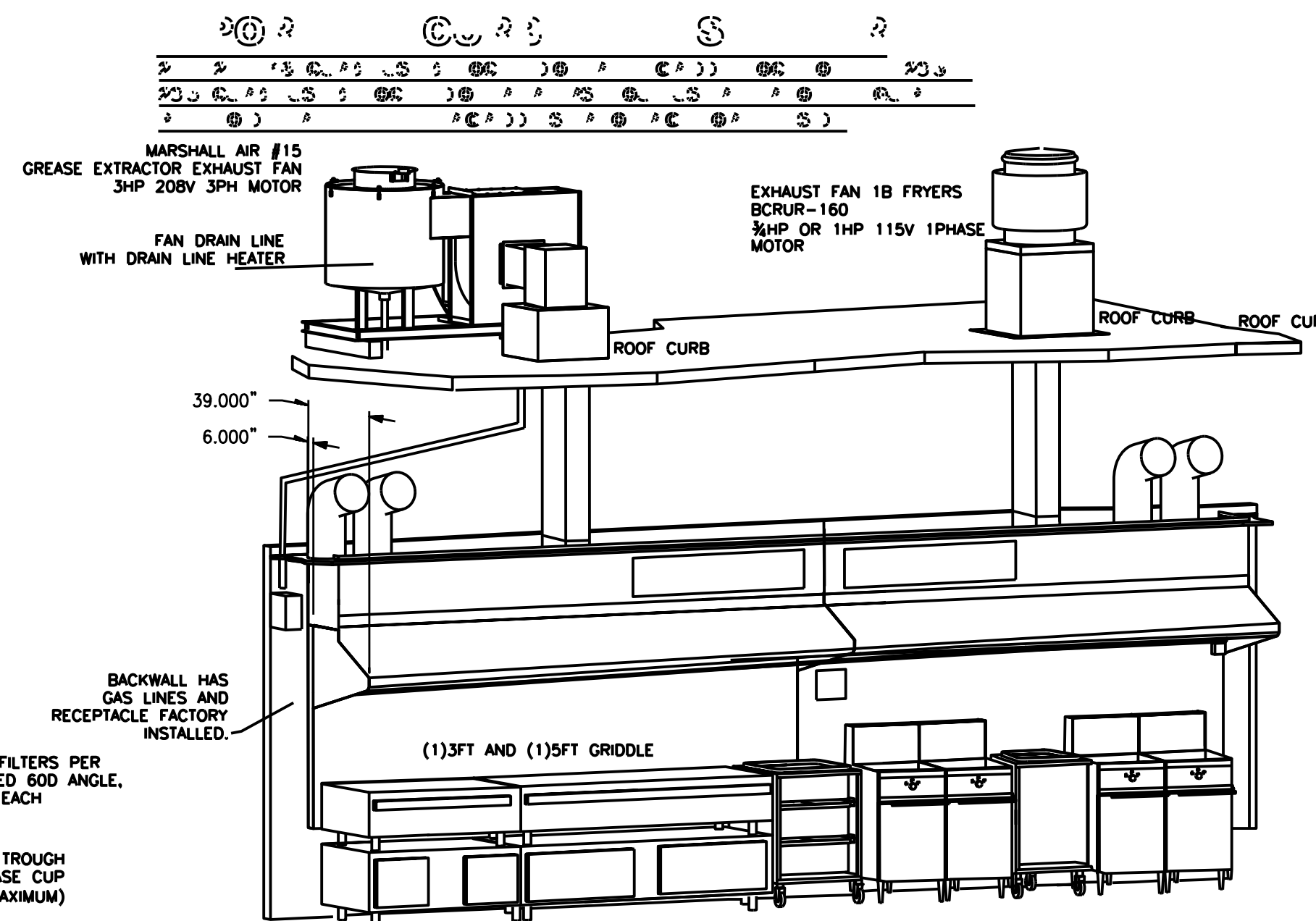
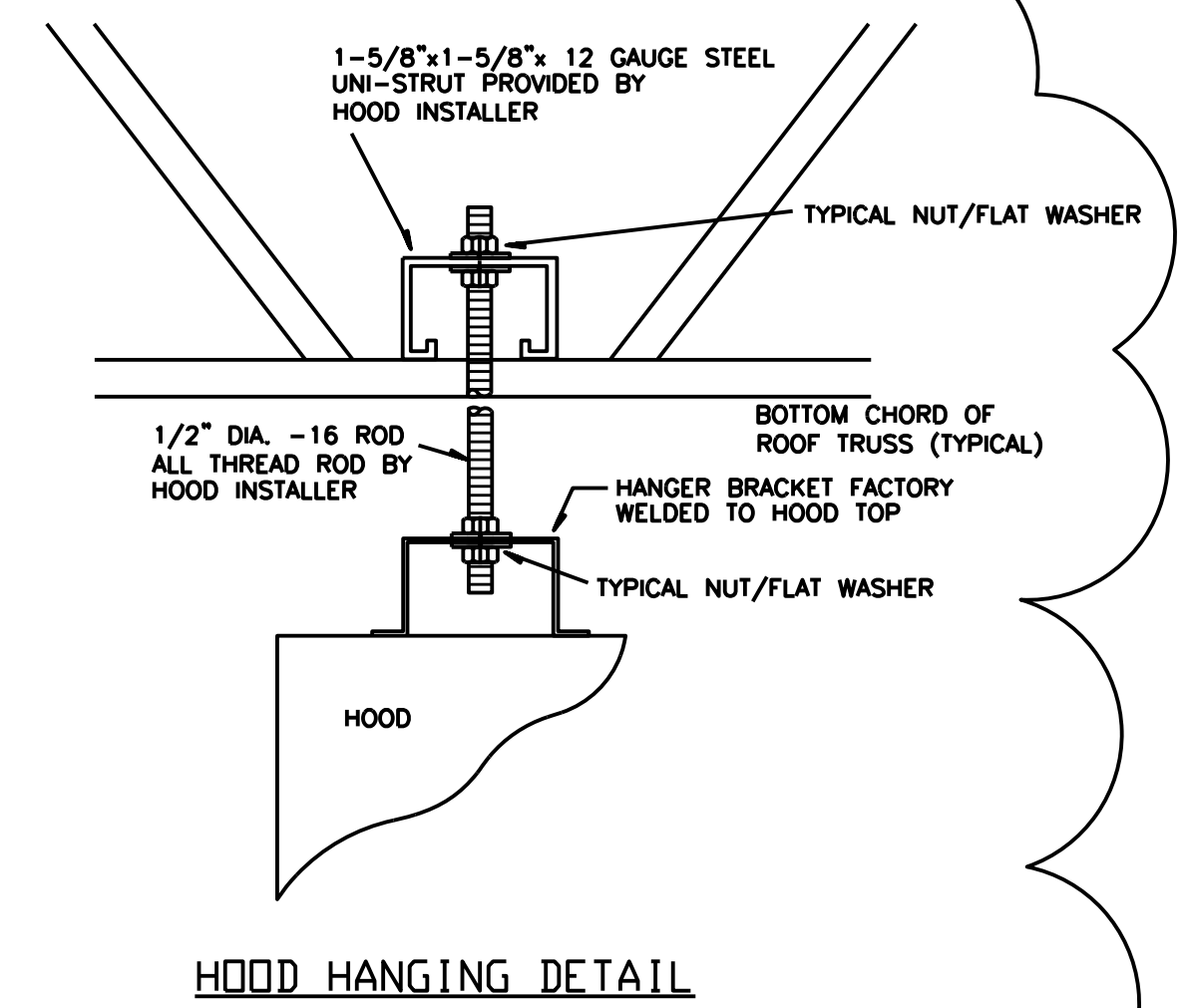
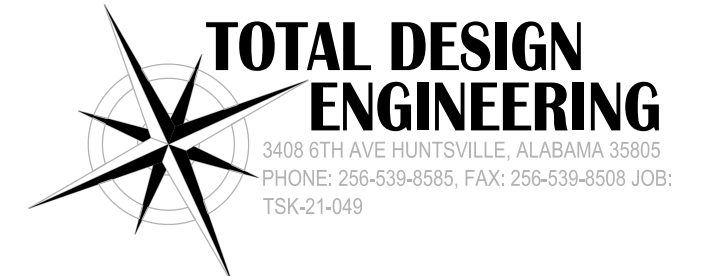


FIVE GUYS
 100 MOON SHOT DRIVE STE 110
 MADISON, AL 35758

HH2015 04/06/2021

Construction Documents
RANGE HOOD DETAILS

M4.0

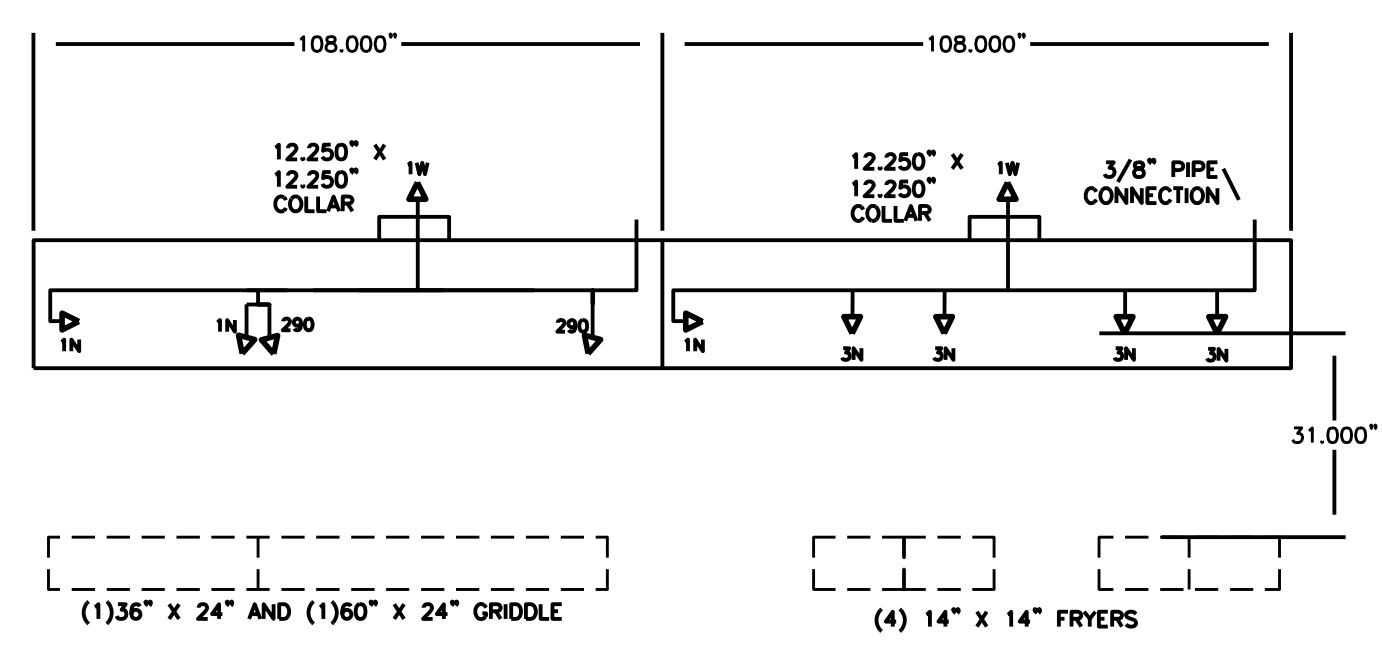


216' MODEL GA FRYER/GRIDDLE HOOD

EACH 9FT HOOD SECTION WEIGHS 575 LBS.
 HOOD TOTAL WEIGHT: 1150 LBS.
 HOOD LEGS SUPPORTS 760 LBS OF THIS.

EXHAUST HOOD IS ETL LISTED TO CONFORM TO UL 710 SPECS. IN ADDITION TO CERTIFYING ADEQUATE EXHAUST LEVELS, UL ALSO CERTIFIES COMPLIANCE WITH NFPA 96 CONSTRUCTION REQUIREMENTS.
 HOOD LISTED MODEL GA-108-MUA
 LISTED OVERHANG HOOD SIDES: 2" MINIMUM FROM COOKING SURFACE.
 LISTED OVERHANG HOOD FRONT: .5" MINIMUM FROM COOKING SURFACE.
 6" OVERHANG NOT REQUIRED PER UL710 APPROVAL.
 LISTED EXHAUST CFM: 148 PER FOOT OF COOKING SURFACE MINIMUM.
 COOKING SURFACE TEMPERATURE: 400°F (GRIDDLES, FRYERS)

ACCEPTED FOR USE
 CITY OF NEW YORK
 DEPARTMENT OF BUILDINGS
 MEA 3-07-E



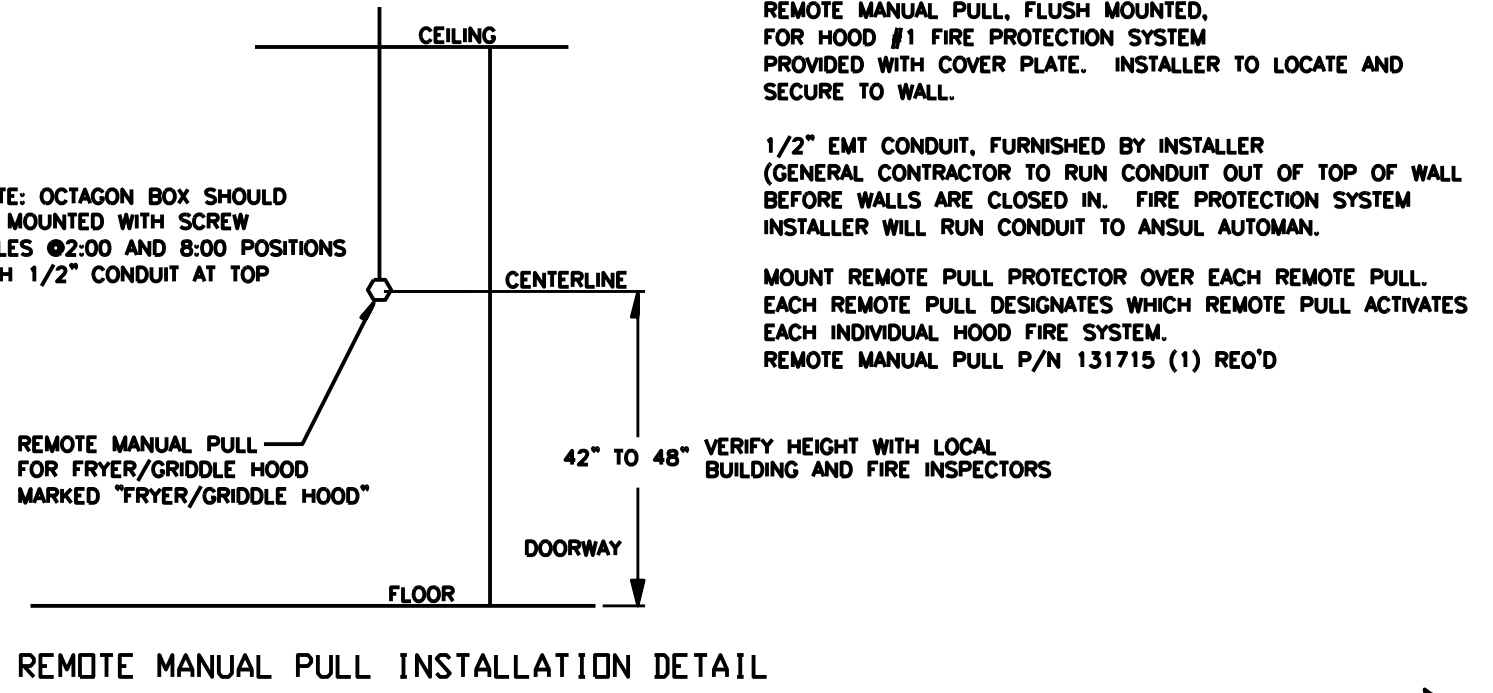
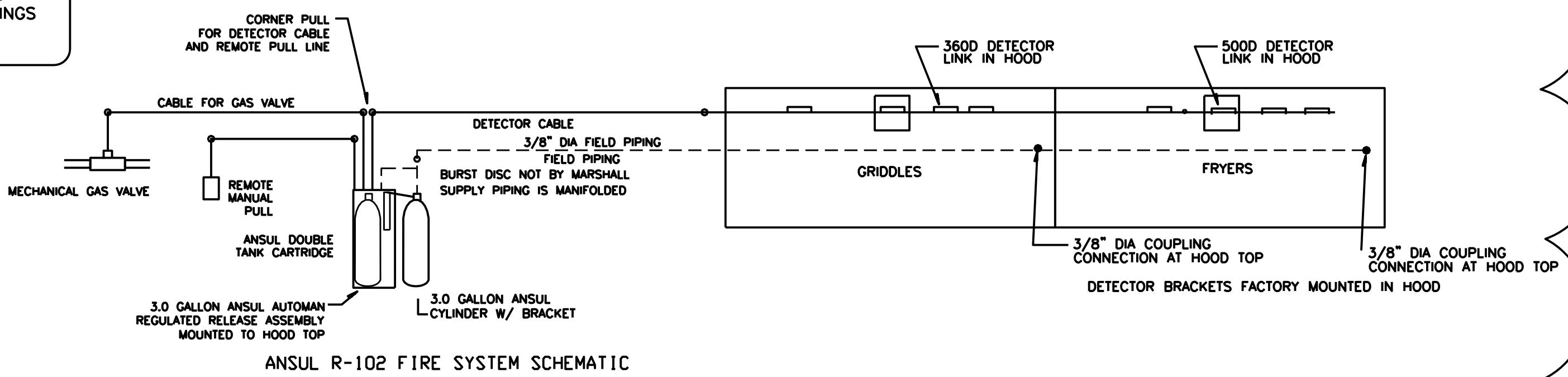
HOOD IS PRE-PIPED WITH PIPING, NOZZLES AND DETECTORS. NOZZLES CAN BE RELOCATED FOR OPPOSITE EQUIPMENT.

- GRIDDLE HOOD: 10FT. 3/8" DIA. PIPING
 (7) 3/8" DIA. 90D ELBOWS
 (6) 3/8" DIA. TEES
 7 TOTAL FLOW POINTS
- FRYER HOOD: 11.5FT. 3/8" DIA. PIPING
 (7) 3/8" DIA. 90D ELBOWS
 (5) 3/8" DIA. TEES
 14 TOTAL FLOW POINTS
- 21 TOTAL FLOW POINTS**

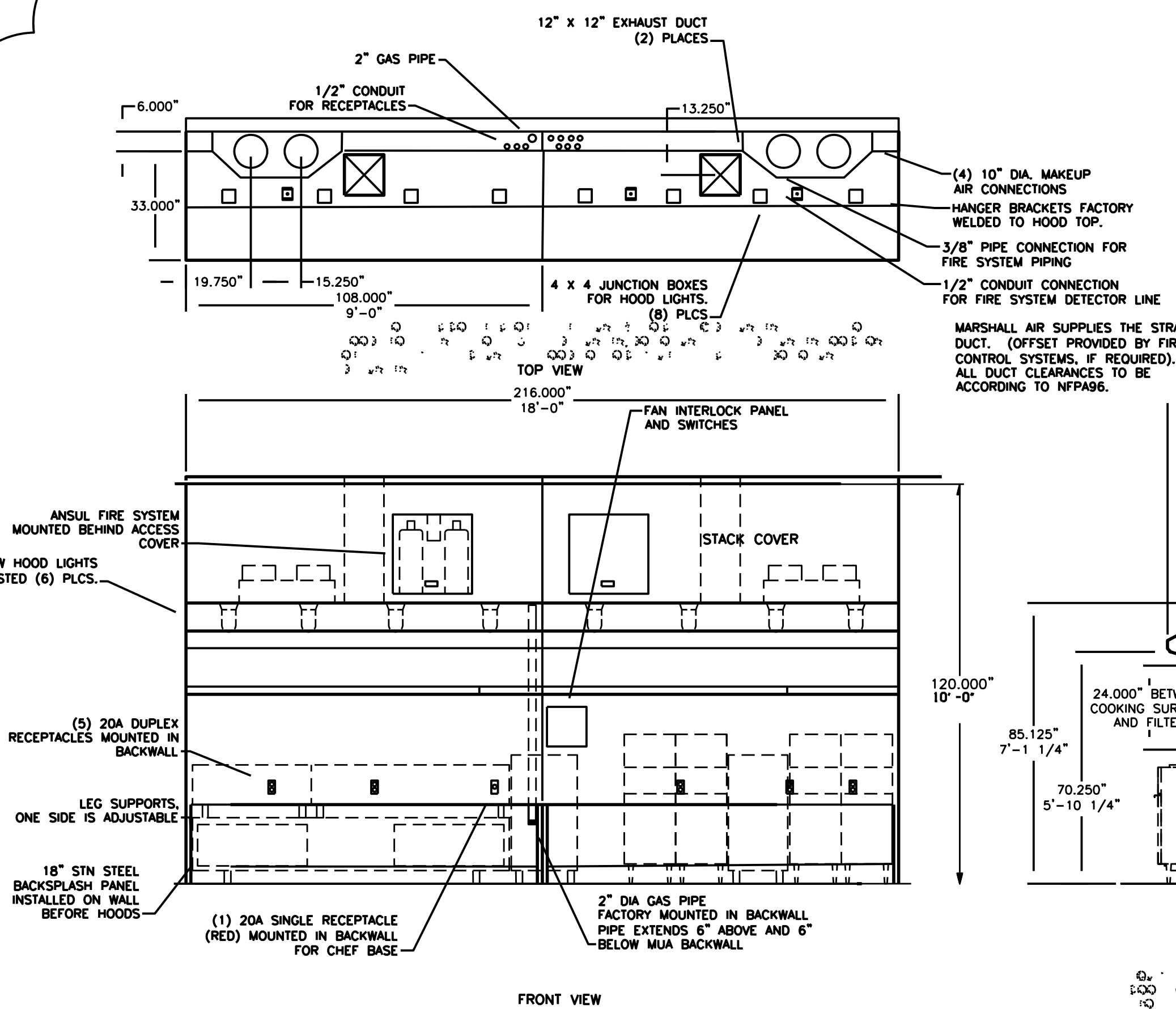
4 FRYER FIRE PROTECTION SYSTEM

 Marshall Air Systems, Inc.
 419 Paschim Drive South
 Charlotte, NC 28217
 (704)-525-6230

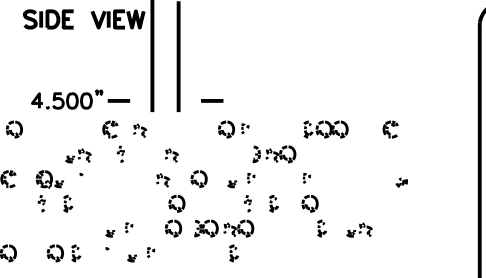
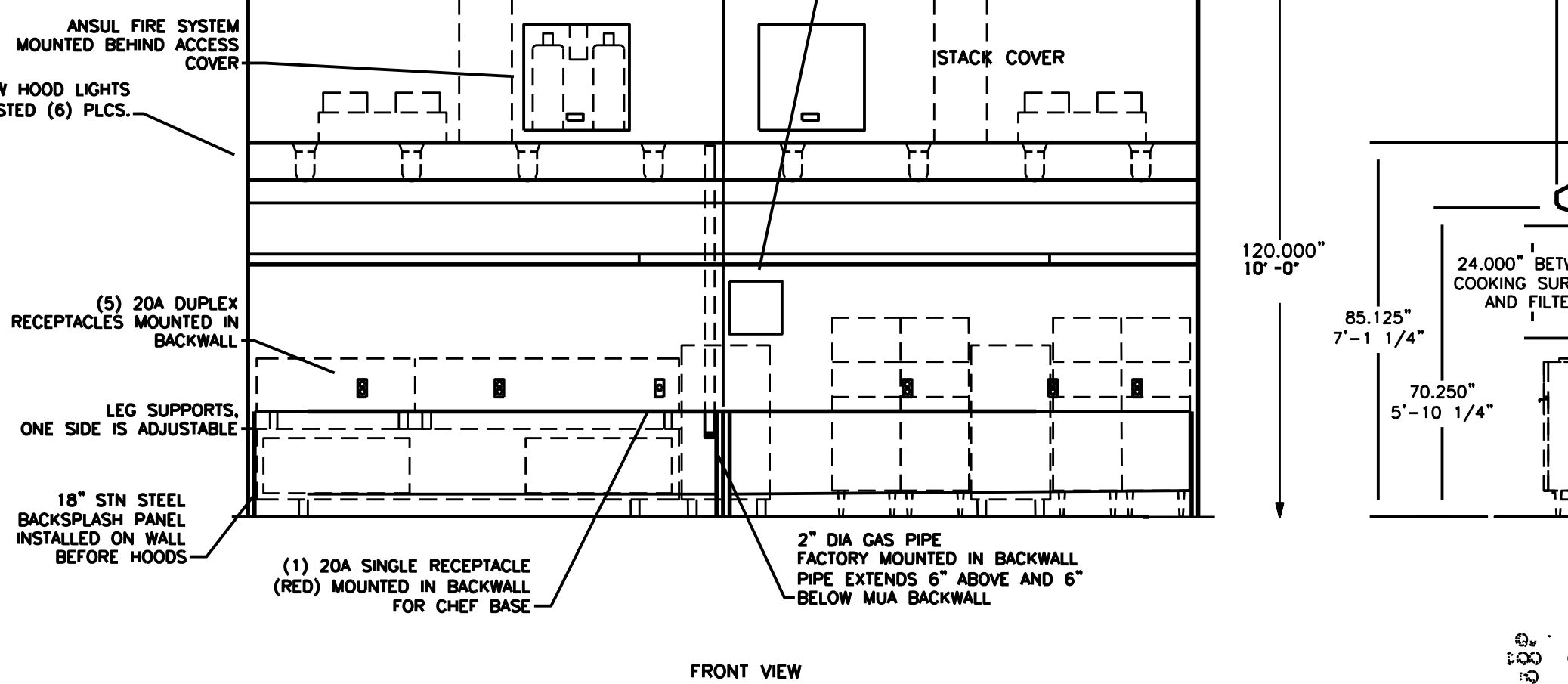
This drawing is the property of Marshall Air Systems, Inc., and contains confidential and proprietary information of Marshall Air Systems, Inc. This drawing is provided to the recipient on loan only for purposes of reference, installation, use and/or maintenance of the depicted equipment of Marshall Air Systems, Inc., and for no other purpose. This drawing shall not be copied, reproduced, loaned, disposed of or otherwise disclosed to any third party, either directly or indirectly except in carrying out the aforesaid purposes, and shall be returned to Marshall Air Systems, Inc., upon request. The recipient's acceptance of this drawing shall be deemed to constitute express consent and agreement to the foregoing terms.



REMOTE MANUAL PULL INSTALLATION DETAIL



216' MODEL GA FRYER/GRIDDLE HOOD

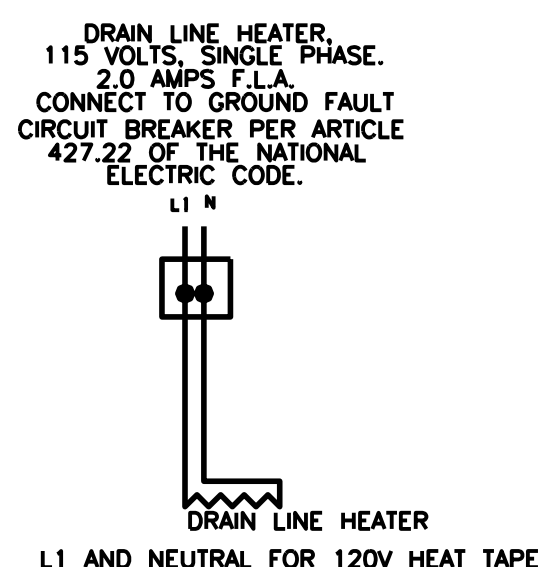


216' MODEL GA FRYER/GRIDDLE HOOD

©HHArchitects, All Rights Reserved

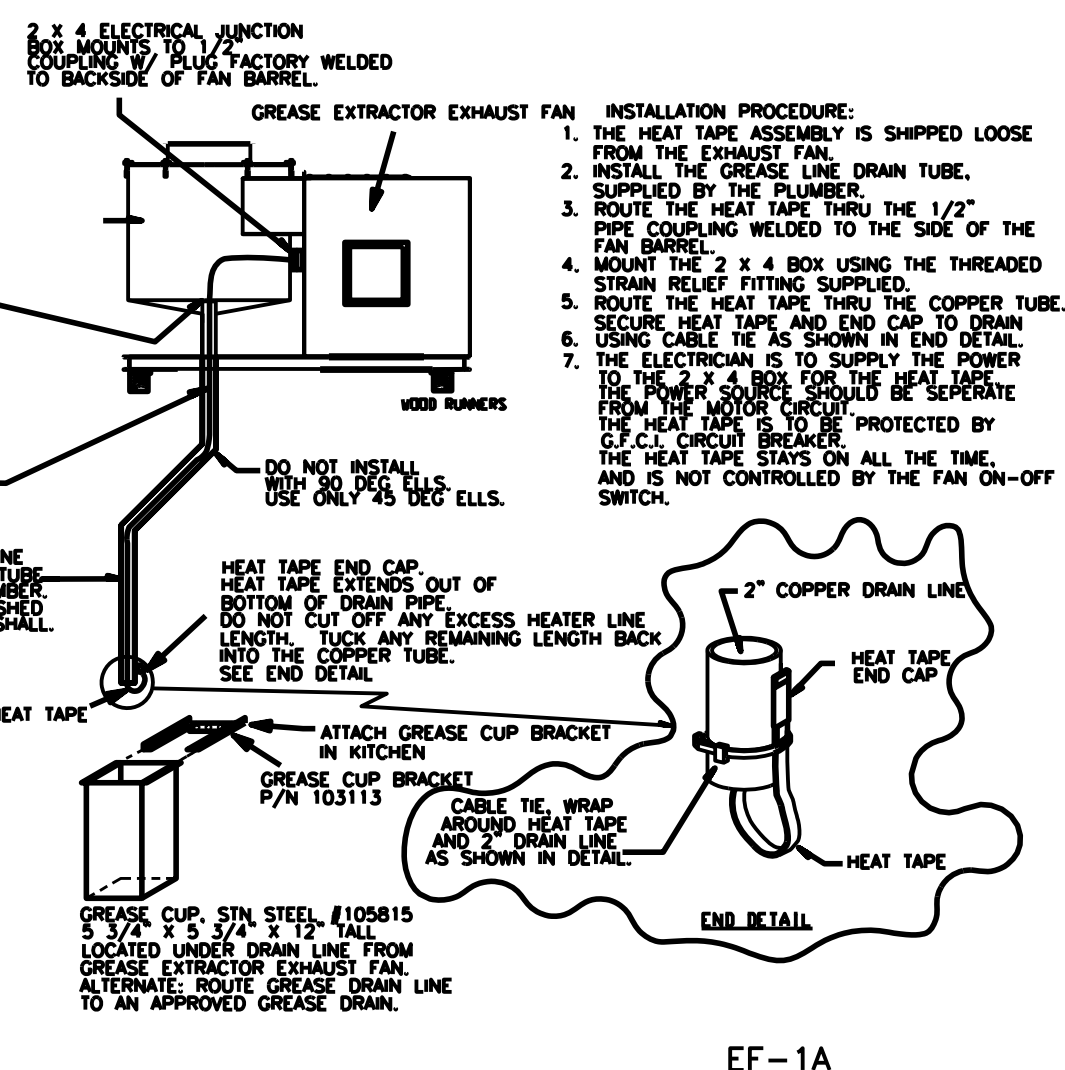
NOTES:

1. WIRING AND INSTALLATION TO BE PER APPLICABLE NATIONAL ELECTRICAL CODE AND BUILDING CODES.
2. ALWAYS TURN THE FAN ELECTRICAL SWITCH OR SWITCHES TO THE OFF POSITION BEFORE CLEANING OR SERVICING FANS.
3. INTERLOCK MAKEUP AIR FAN WITH THE EXHAUST FANS PER APPLICABLE CODES.
4. THE DRAIN LINE HEATER IS NOT CONNECTED TO THE FAN DISCONNECT SWITCH. HEATER MUST BE ON AT ALL TIMES TO PREVENT GREASE FROM SOLIDIFYING IN THE DRAIN LINE.
5. THE DRAIN LINE HEATER IS TO BE ROUTED BY INSTALLER THRU COPPER TUBING LEADING TO THE GREASE CUP IN KITCHEN. DO NOT CUT OFF ANY EXCESS LENGTH. TUCK EXCESS LENGTH OF HEATER BACK INTO DRAIN LINE.



HEAT TAPE INSTALLATION PROCEDURE:

1. THE HEAT TAPE IS SHIPPED LOOSE FROM THE EXHAUST FAN.
2. INSTALL THE COPPER GREASE LINE TUBE, SUPPLIED BY THE PLUMBER.
3. ROUTE THE HEAT TAPE THRU THE 1/2" PIPE COUPLING ON THE HOUSING.
4. MOUNT THE 2 X 4 BOX USING THE THREADED STRAIN RELIEF FITTING SUPPLIED.
5. ROUTE THE HEAT TAPE THRU THE COPPER TUBE.
6. SECURE HEAT TAPE AND END CAP TO DRAIN USING THE CABLE TIE AS SHOWN IN END DETAIL.
7. THE ELECTRICIAN IS TO SUPPLY THE POWER TO THE 2 X 4 BOX FOR THE HEAT TAPE. THE POWER SOURCE SHOULD BE SEPARATE FROM THE MOTOR CIRCUIT. THE HEAT TAPE SHOULD BE PROTECTED BY A G.F.C.I. CIRCUIT BREAKER. THE HEAT TAPE STAYS ON ALL THE TIME AND IS NOT CONTROLLED BY THE FAN ON/OFF SWITCH.

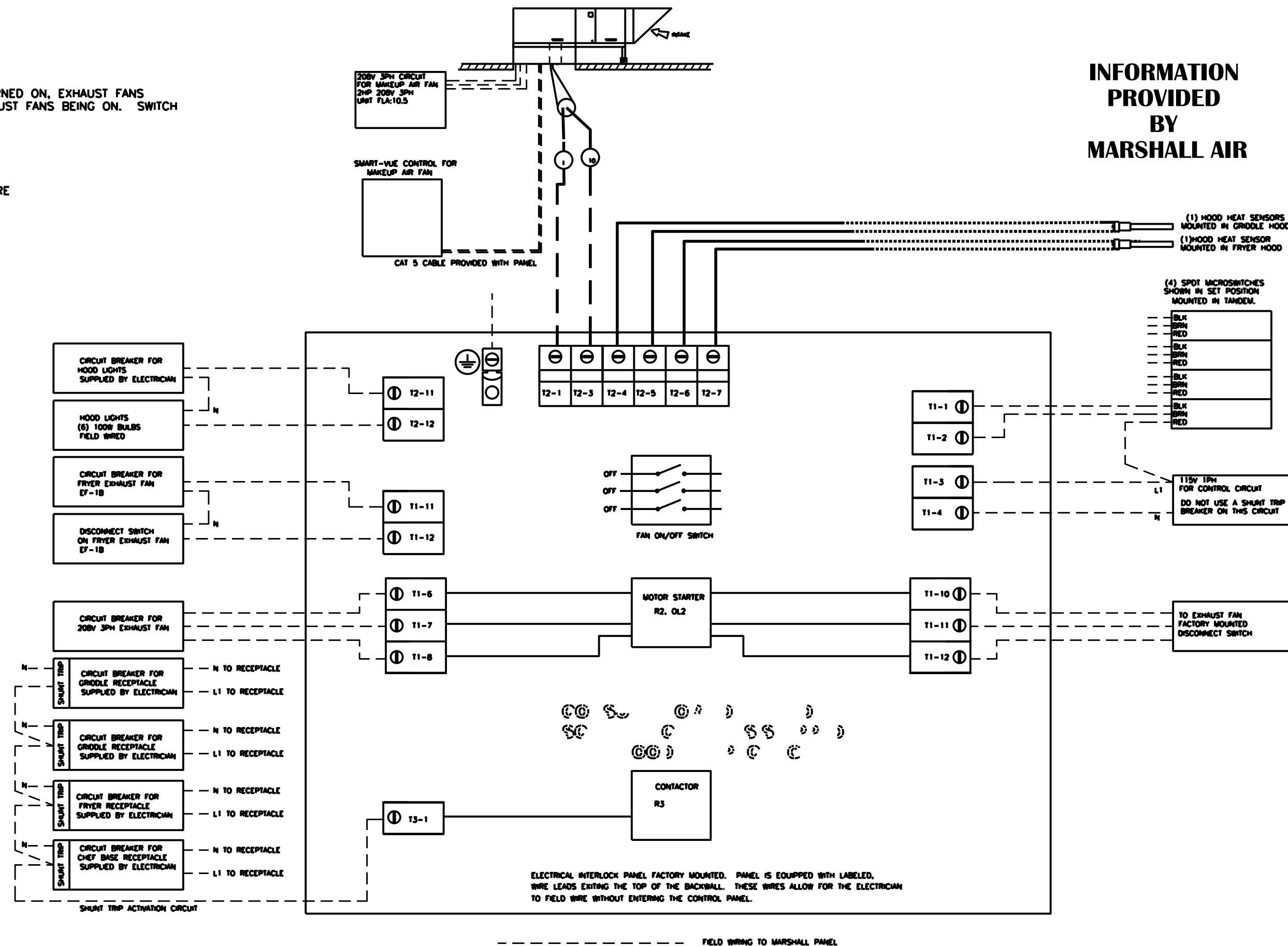


HOOD PANEL OPERATION

HOODS ARE EQUIPPED WITH HEAT SENSORS. IF COOKING EQUIPMENT IS TURNED ON, EXHAUST FANS WILL AUTOMATICALLY POWER ON. THIS PREVENTS COOKING WITHOUT EXHAUST FANS BEING ON. SWITCH WILL THEN NEED TO BE TURNED ON TO TURN ON HOOD LIGHTS.

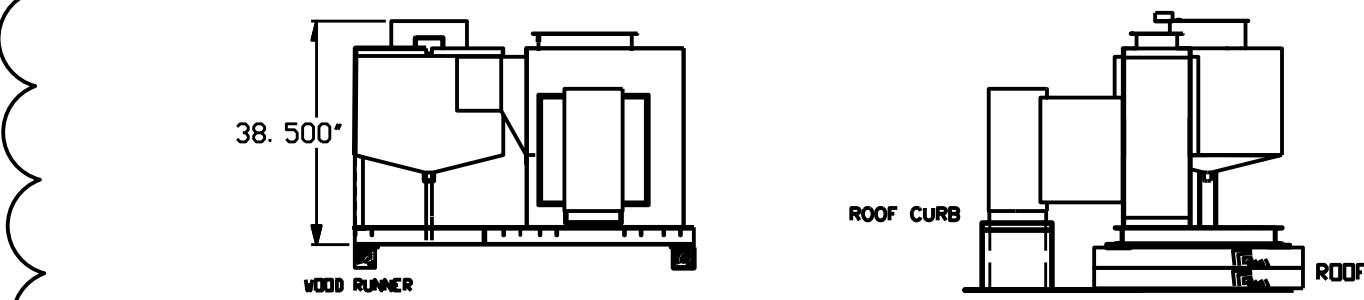
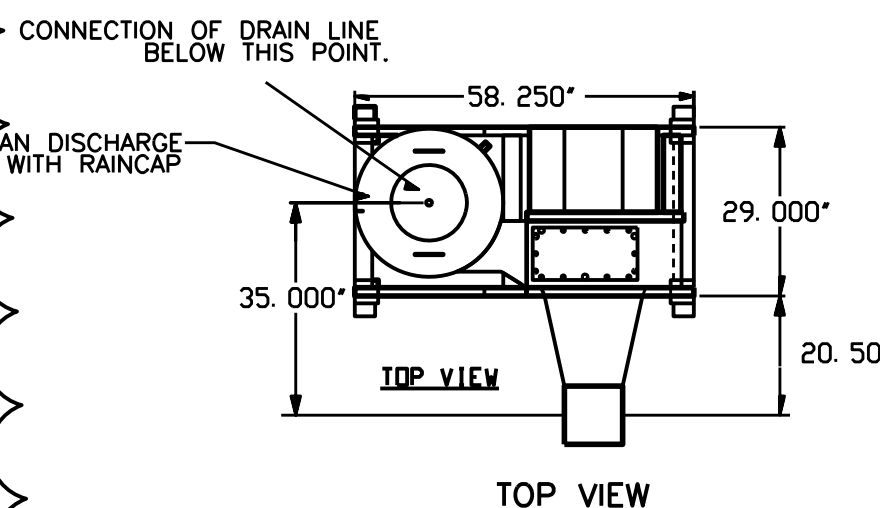
- READY MODE: SWITCH IN ON POSITION
 -EXHAUST FAN(S) ON
 -MAKEUP AIR UNIT ON (BURNER ON IF TEMPERATURE IS BELOW SET TEMPERATURE)
 -COOKING EQUIPMENT RECEPTACLES HAVE VOLTAGE TO ALLOW FOR OPERATION
- READY MODE: SWITCH IN OFF POSITION
 -EXHAUST FAN(S) OFF
 -MAKEUP AIR UNIT OFF

- ALARM (FIRE) MODE: SWITCH IN ON POSITION
 -EXHAUST FAN(S) REMAIN ON
 -MAKEUP AIR UNIT SHUTS OFF
 -ELECTRICAL POWER TO EQUIPMENT UNDER HOOD TURNS OFF
- ALARM (FIRE) MODE: SWITCH IN OFF POSITION
 -EXHAUST FAN(S) OFF
 -MAKEUP AIR UNIT REMAINS OFF
 -ELECTRICAL POWER TO EQUIPMENT UNDER HOOD REMAINS OFF



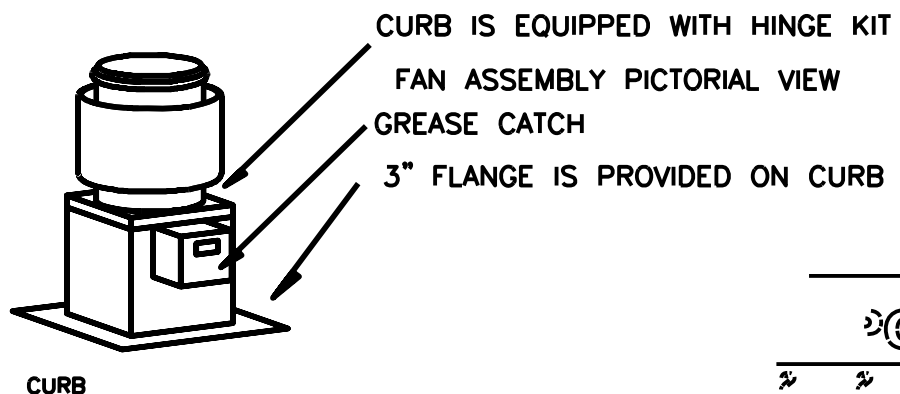
INFORMATION PROVIDED BY MARSHALL AIR

- (1) HOOD HEAT SENSORS MOUNTED IN GRIDDLE HOOD
- (1) HOOD HEAT SENSOR MOUNTED IN FRYER HOOD
- (4) SPOT MICROSWITCHES SHOWN IN SET POSITION MOUNTED IN INSIDE
- (1) TIEP TRIP FOR CONTROL CIRCUIT DO NOT USE A SHUNT TRIP BREAKER ON THIS CIRCUIT



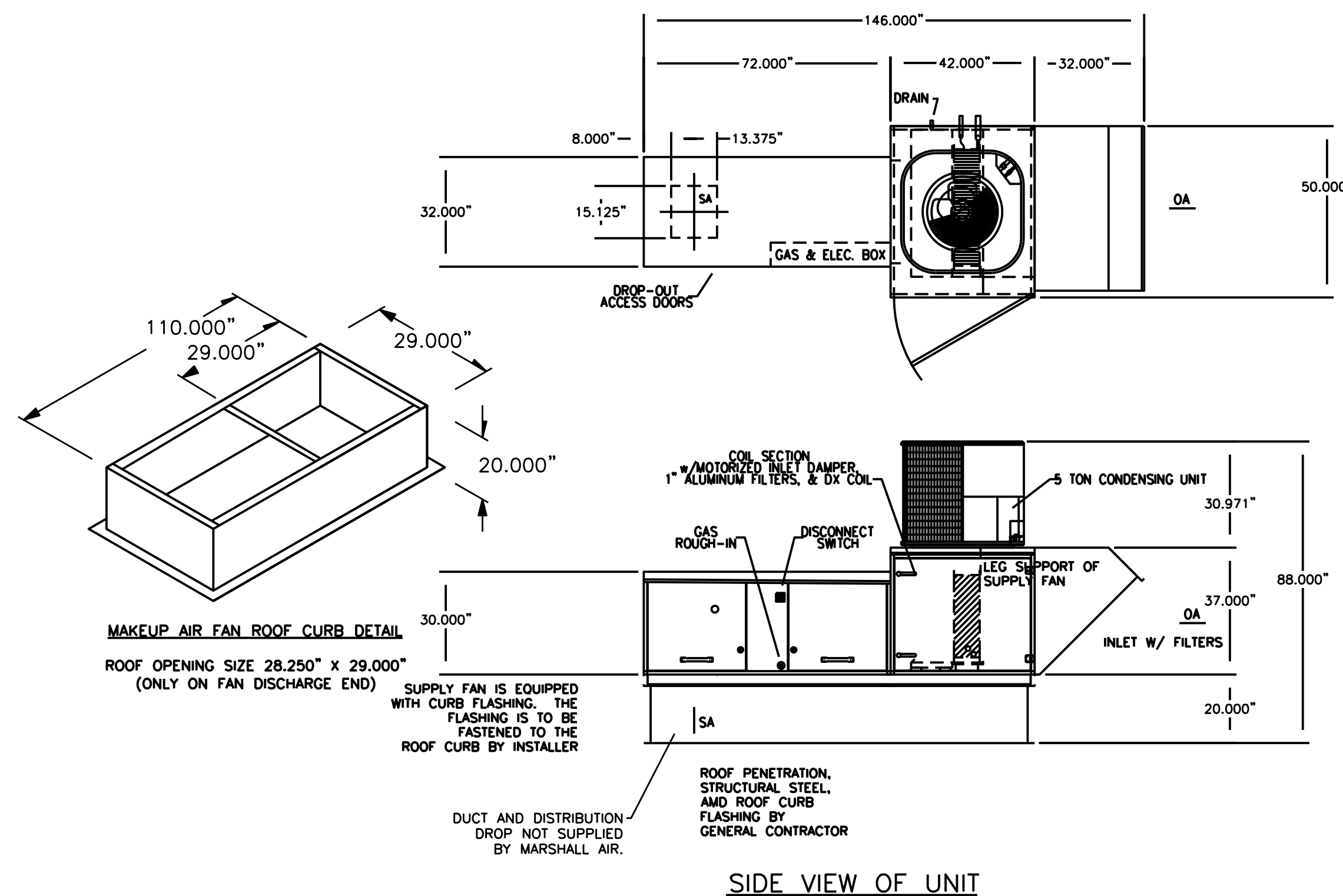
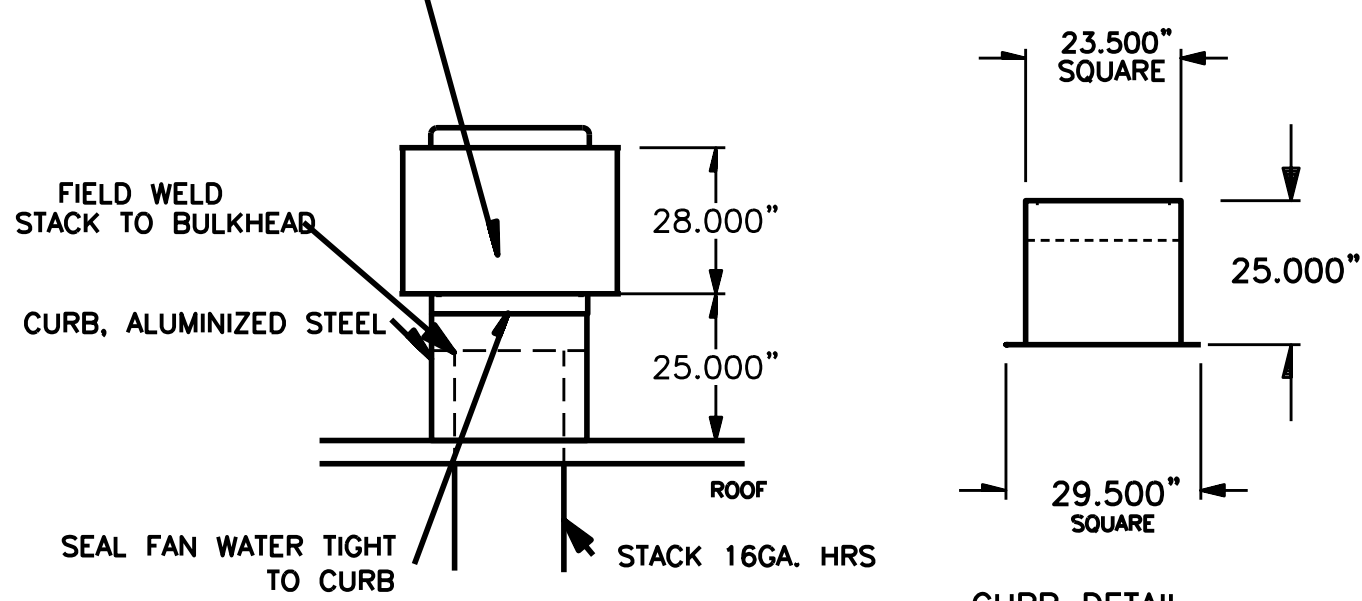
#15 GREASE EXTRACTOR EXHAUST FAN DETAILS FAN P/N Z28

#15 GREASE EXTRACTOR EXHAUST FAN DETAILS FAN P/N Z2 SCALE: 3/8\"/>



SUPPLIED BY MARSHALL AIR SYSTEMS, INC.

ELECTRICAL DISCONNECT PLUG LOCATED UNDER MOTOR COVER



MUA-1 SUPPLY FAN

ABSOLUT AIRE MODEL V2-HOXDXP

TYPE: ROOF MOUNTED - DIRECT FIRED, DX COOLING

TOTAL CFM: 2390

O.A. MINIMUM: 2390 CFM

TOTAL S.P. (EXTERNAL): 0.650"

HORSEPOWER: 2.0

VOLTAGE: 208/3/60

HEATING COIL: DIRECT FIRED

FUEL: NATURAL GAS

HEATING CAP. INPUT: 188,000

HEATING CAP. OUTPUT: 173,000

Δt: 67°

GAS PRESSURE REQ'D: 6" MIN., 14" MAX.

REFRIGERANT: R410A

REFRIGERANT CHARGE: 3.34LBS.

LEAVING AIR DB/WB: 72.6/68.5

UNIT WEIGHT: 1125 LBS.



This drawing is the property of Marshall Air Systems, Inc. and contains confidential and proprietary information. It is to be used only for the project and location specified. No part of this drawing may be reproduced or transmitted in any form or by any means, electronic or mechanical, including photocopying, recording, or by any information storage and retrieval system, without the prior written permission of Marshall Air Systems, Inc. The user of this drawing shall be deemed to have accepted the terms and conditions of the license agreement.



HH Architects, Inc.
 We Believe | We Serve | We Create

2221 Lakeside Blvd | Suite 1100
 Richardson, Texas 75082
 972-404-1034



FIVE GUYS

100 MOON SHOT DRIVE STE 110
 MADISON, AL 35768

HH2015 04/06/2021

Construction Documents
 RANGE HOOD DETAILS

M5.0



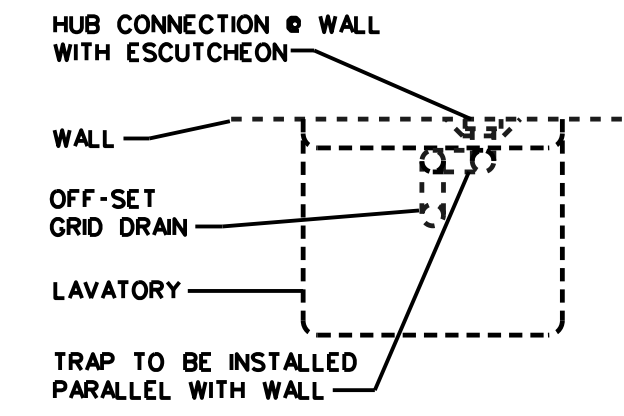
PLUMBING FIXTURE SCHEDULE

FIXTURE NUMBER	DESCRIPTION	PIPE SIZE		
		WASTE	C.W.	H.W.
P-1	WATER CLOSET (ADA): TOTO DRAKE NO. CST744SL ELONGATED TOILET, VITREOUS CHINA, 1.6 GALLONS PER FLUSH, WITH TOTO NO. SC534 ELONGATED OPEN FRONT PLASTIC SEAT, MCGUIRE SUPPLY KIT. TRIP LEVER TO BE ON WIDE SIDE OF THE ROOM	4"	1"	-
P-2	WATER CLOSET: TOTO DRAKE NO. CST744SL ELONGATED TOILET, VITREOUS CHINA, 1.6 GALLONS PER FLUSH, WITH TOTO NO. SC534 ELONGATED OPEN FRONT PLASTIC SEAT, MCGUIRE SUPPLY KIT.	4"	1"	-
P-3	URINAL (ADA): ZURN MODEL Z5755.196 WITH ZURN FLOOR VALVE MODEL Z6003AV-EWS RIM OF URINAL TO BE 17" ABOVE FLOOR.	2"	3/4"	-
P-4	LAVATORY (ADA): WALL MOUNTED ZURN MODEL Z5344, WITH ZURN Z6915-XL-15CT FAUCET 1.5 GPM VANDAL RESISTANT AERATOR (CHROME PLATED), RIM, 34" MAX A.F.F. INSULATE THE WATER AND WASTE PIPES BELOW THE LAVATORY WITH TRUEBRO LAV GUARD SERIES MOLDED VINYL COVERING, WHITE FINISH WITH SNAP CLIP REUSABLE FASTENERS.	2"	1/2"	1/2"
P-5	4 COMPARTMENT SINK: SOUTHERN STAINLESS MODEL NO. FG-175-L 4 COMPARTMENT WAREWASH SINK, ENCORE MODEL NO. KLP53-10L4-AF4 WALL MOUNT PRE-RINSE ASSEMBLY, ENCORE NO. DSS-8000 DRAIN MASTER ROTARY DRAIN, AND FIAT MODEL NO. B30AA FILLER FAUCET	2"	1/2"	1/2"
P-6	4 COMPARTMENT POWERSOAK SINK: UNIFIED BRANDS MODEL NO. PS-8146B-L 4 COMPARTMENT POWERSOAK SINK	2"	1/2"	1/2"
P-7	HANDWASH LAVATORY: SOUTHERN STAINLESS HAND SINK WITH SIDE SPLASH FG-007, 17" X 15" X 7 3/4"	2"	1/2"	1/2"
P-8	ICE MAKER VALVE BOX: SHARKBITE MODEL 25032, RECESSED WALL BOX WITH 1-2" VALVE AND WALL FLANGE.	-	1/2"	-
P-9	SODA MACHINE VALVE BOX: SHARKBITE MODEL 25032, RECESSED WALL BOX WITH 1-2" VALVE AND WALL FLANGE.	-	1/2"	-
P-10	MOP SINK: FIAT MODEL TSB-100, 24" X 24" X 12" DEEP PRE-CAST TERRAZZO SINK WITH STAINLESS STEEL BINNER GUARDS ALL SIDES, 3" DEEP SEAL TRAP MODEL 1453-BB STAINLESS STEEL STRAINER, MODEL MSG-2424 STAINLESS STEEL WALL GUARD, SPEAKMAN NO. S-5811 MIXING FAUCET WITH WALL SUPPORT, VACUUM BREAKER, SCREWDRIWER STOPS AND THREADED HOSE OUTLET. INSTALL WITH MODEL 889-CC THREE MOP HANGER & MODEL 832-AA 30" LONG FLEXIBLE HOSE WITH HOSE MOUNTING BRACKET. SEAL THE SINK TO THE WALL WITH NO. 833-AA SILICONE SEALANT, MOUNT THE MIXING FAUCET 36" ABOVE THE FLOOR.	3"	1/2"	1/2"
P-11	WATER HEATER: NORITZ MODEL NCC199CDV-NG, TANKLESS GAS WATER HEATER, INDOOR MOUNTED, DIRECT VENT, 199,000 BTU/HR GAS INPUT, 98% THERMAL EFFICIENCY, DESIGNED FOR 100°F AT 3.9 GPM, 70°F AT 5.6 GPM OUTLET. INSTALL PER NORITZ SPECIFICATIONS.	-	1/4"	1/4"
P-12	TRAP PRIMER: PRECISION PLUMBING PRODUCTS MODEL ULP-500P, INSTALL PER DETAILS ON THE DRAWINGS.	-	1/2"	-
P-13	ELECTRONIC TRAP PRIMER: PRECISION PLUMBING PRODUCTS MODEL PT-11, INSTALL PER DETAILS ON THE DRAWINGS.	-	1/2"	-
P-14	FLOOR SINK: SMITH NO. 3410Y04, 8" X 8" X 6" DEEP, CAST IRON BODY, PORCELAIN ENAMEL, HALF GRATE COVER WITH BOTTOM DOME STRAINER.	4"	-	-
P-15	TRENCH DRAIN: SMITH NO. 9660-10N WITH END PLATES, TYPE 304 STAINLESS STEEL, CENTER 4" DRAIN, BOTTOM DOME STRAINER WITH 9870-450-SS SLOTTED STAINLESS STEEL GRATE AND J.R. SMITH 2692 QUAD CLOSE DEEP SEAL TRAP, 39.98" INCHES IN LENGTH.	4"	-	-
P-16	FLOOR CLEANOUT: SMITH NO. 4040S04, 4" ADJUSTABLE FLOOR CLEANOUT WITH POLISHED BRONZE TOP IN CAST IRON FERRULE.	4"	-	-
P-17	FLOOR DRAIN: SMITH NO. 2005Y03-A07NB-P050, 3" DRAIN WITH 7" DIAMETER SATIN BRONZE STRAINER, 1/2" PRIMER TAP AND DEEP SEAL TRAP	3"	-	-
P-18	FLOOR DRAIN: SMITH NO. 2005Y04-A07SB-P, 4" DRAIN WITH 7" DIAMETER SATIN BRONZE STRAINER, 1/2" PRIMER TAP AND DEEP SEAL TRAP	4"	-	-
P-19	WATER FILTRATION SYSTEM: 3M DDF265-CL TO BE PROVIDED BY OWNER	-	3/4"	-

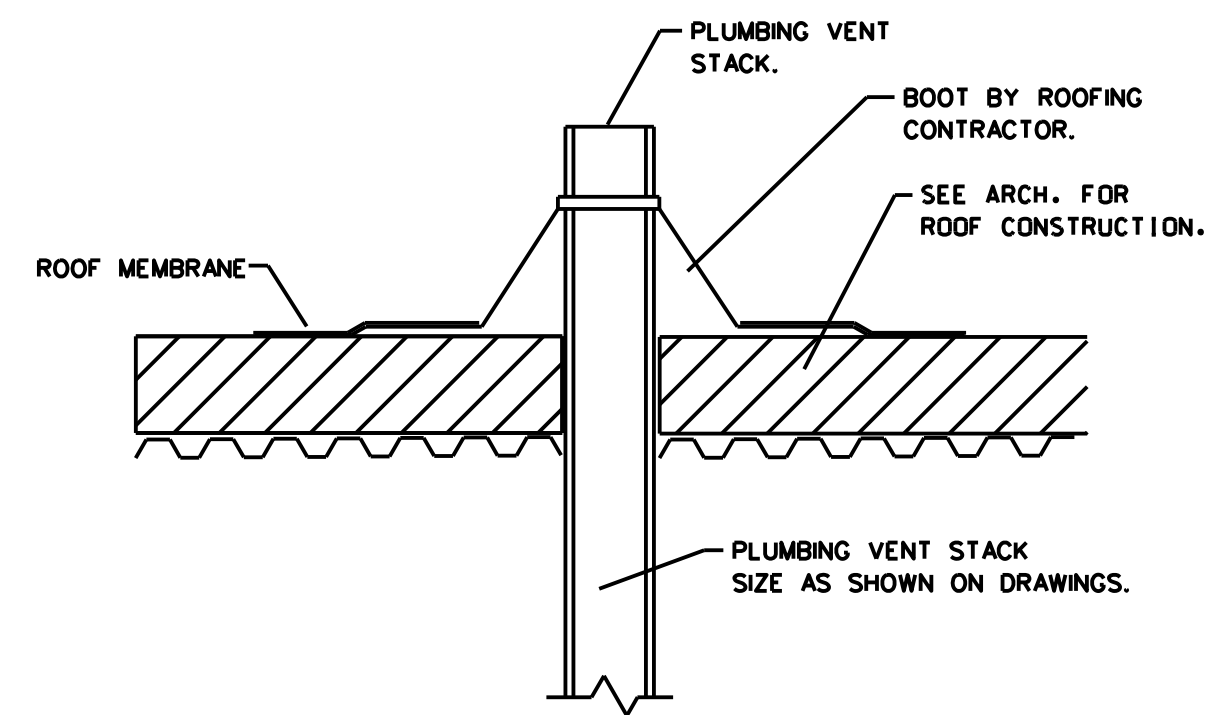
PLUMBING NOTES

- ALL PLUMBING VENTS TO BE INSTALLED WITH A MINIMUM OF 10'-0" CLEARANCE FROM ALL OUTSIDE AIR INTAKE SYSTEMS ON THE MECHANICAL EQUIPMENT.
- EQUAL FIXTURES CAN BE SUBMITTED IN PLACE OF SPECIFIED FIXTURES.
- PEX PLUMBING PIPE CAN BE INSTALLED IN PLACE OF COPPER PIPING.
- ROUTE WATER HEATER PAN & RELIEF DRAINS TO BELOW MOP SINK.
- FIRST 8'-0" OF COLD WATER INLET AND HOT WATER OUTLET PIPING FROM WATER HEATER TO BE INSULATED.

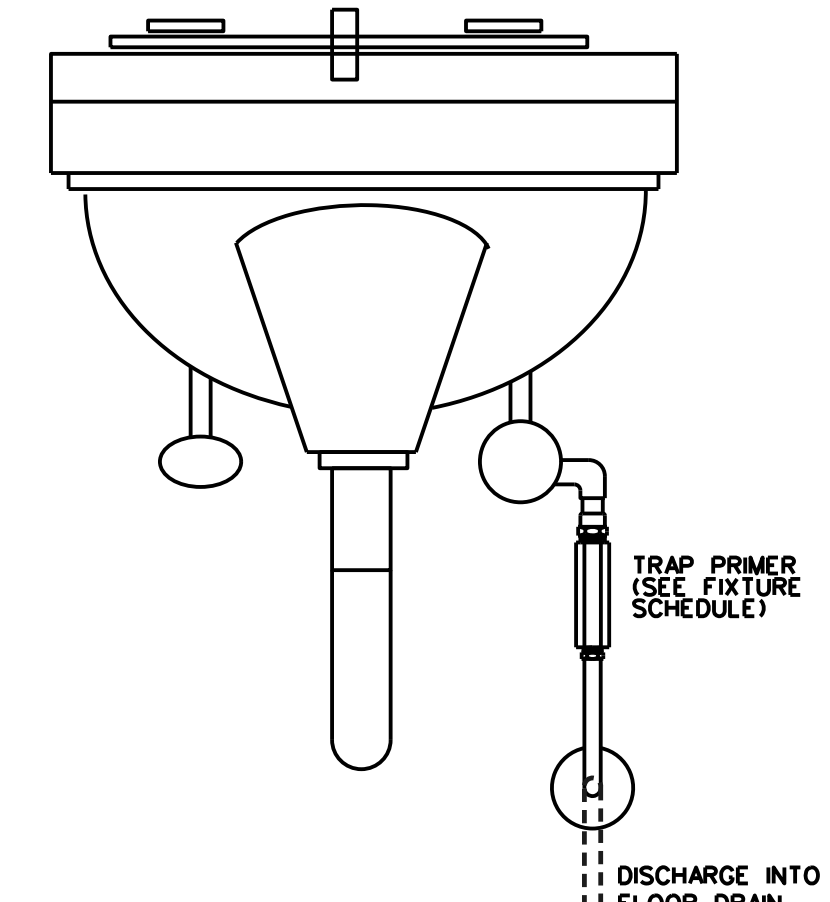
HANDICAPPED LAV. WASTE CONNECTION DETAIL
NOT TO SCALE



PLUMBING VENT THRU ROOF DETAIL
NOT TO SCALE

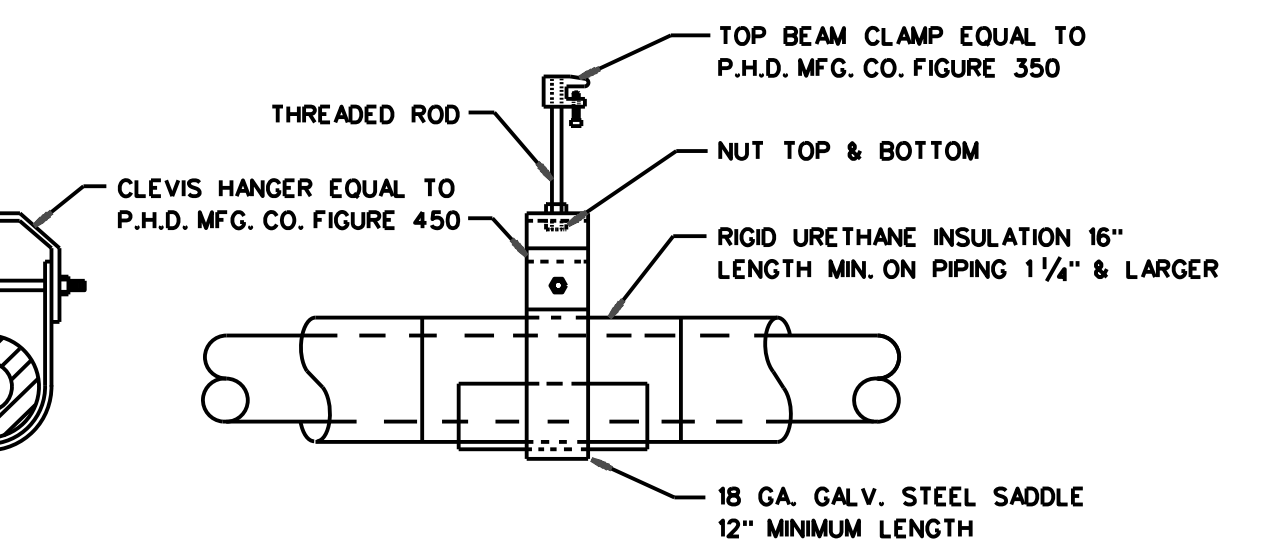


TRAP PRIMER DETAIL
NOT TO SCALE

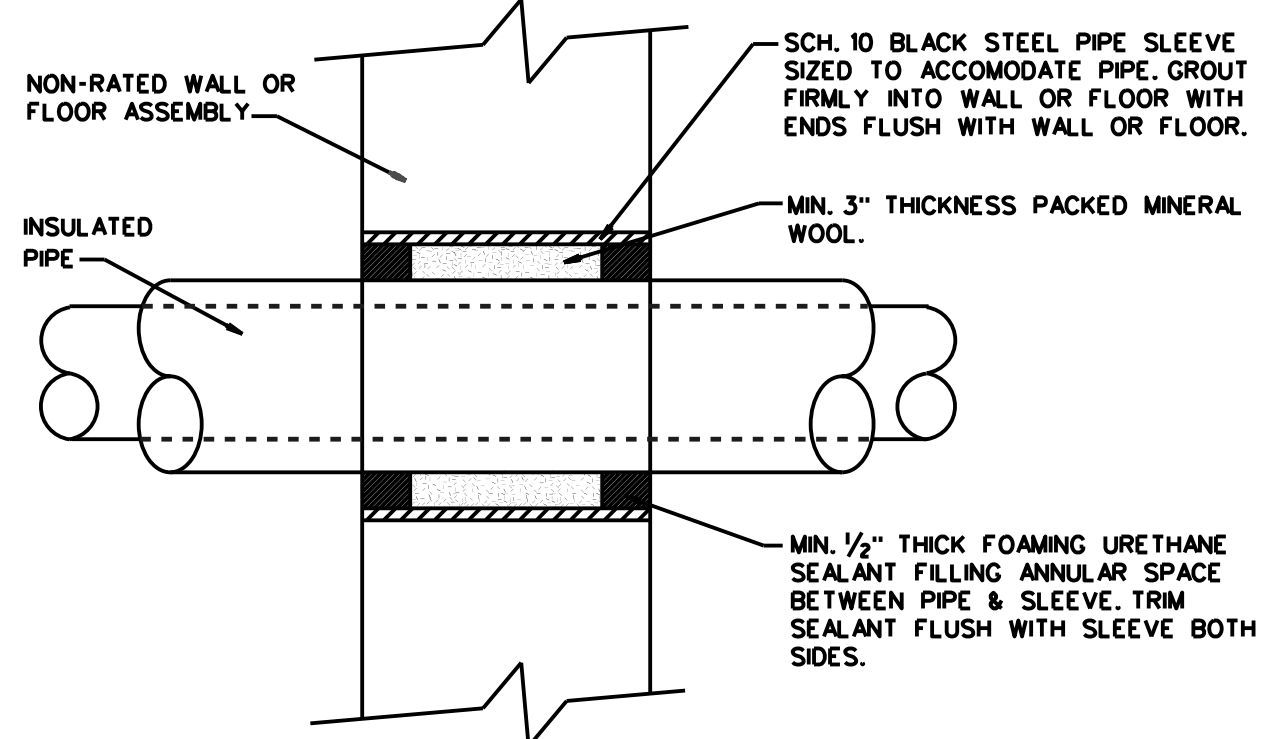


PIPE SUPPORT SCHEDULE

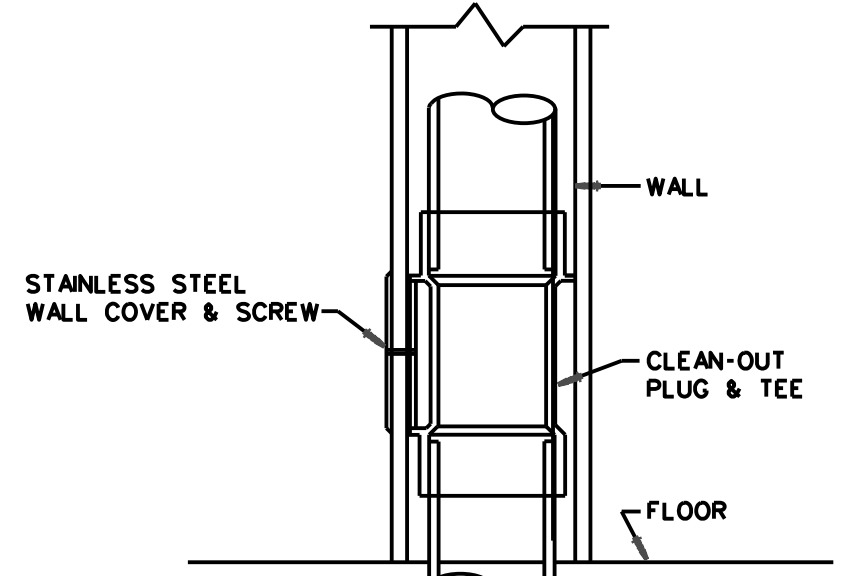
PIPE SIZE	HANGER SPACING
1/2"	6'
3/4"	6'
1"	8'
1 1/2"	8'
2"	10'
2 1/2"	10'
3"	12'
4"	12'
6"	12'
8"	12'



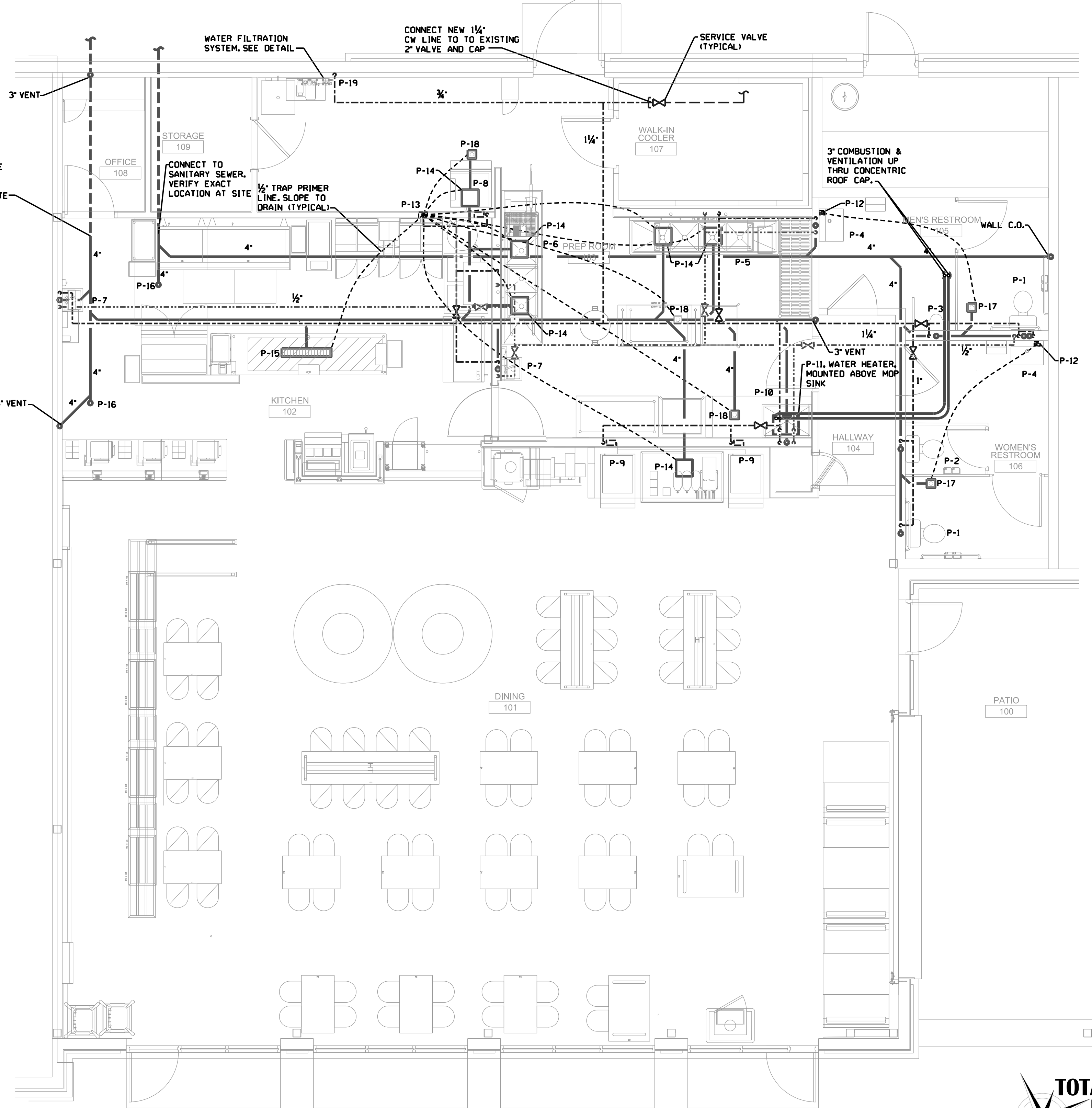
HOT & COLD WATER PIPE HANGER DETAIL
NOT TO SCALE



NON-RATED PIPE SLEEVE DETAIL
NOT TO SCALE

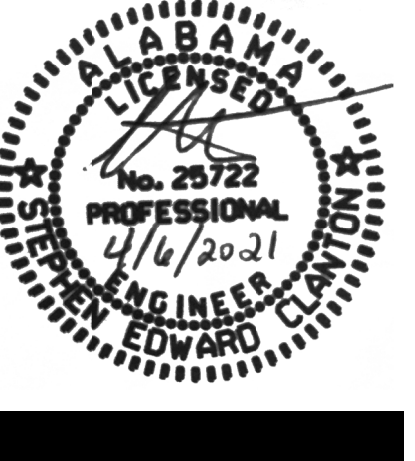


WALL CLEANOUT DETAIL
NOT TO SCALE



PLUMBING FLOOR PLAN
SCALE: 1/4" = 1'-0"

Revision Schedule	
Rev. 3 Clarifications	6/14/21
Rev. 4 Fire Marshall Comments	9/29/21
Rev. 5 Range Hood Change	10/24/21



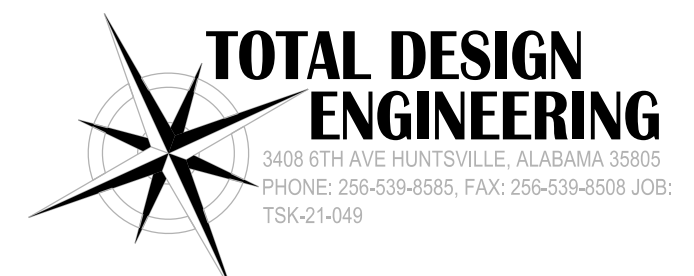
HH Architects, Inc.
We Believe | We Serve | We Create
2021 Lakeside Blvd | Suite 1100
Richardson Texas 75082
972-404-1034



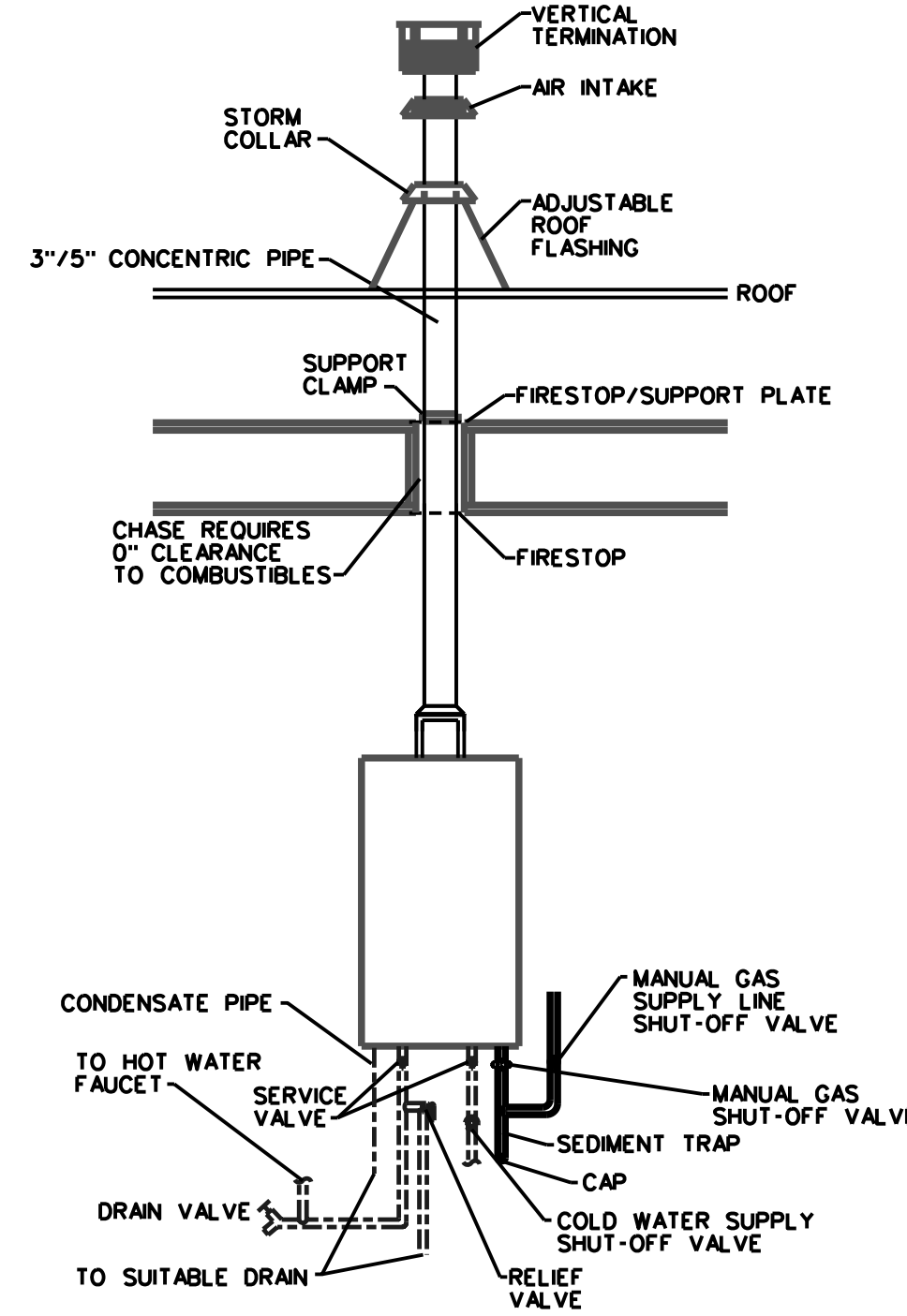
FIVE GUYS
100 MOON SHOT DRIVE STE 110
MADISON, AL 35758

HH2015 04/06/2021
Construction Documents
PLUMBING FLOOR PLAN

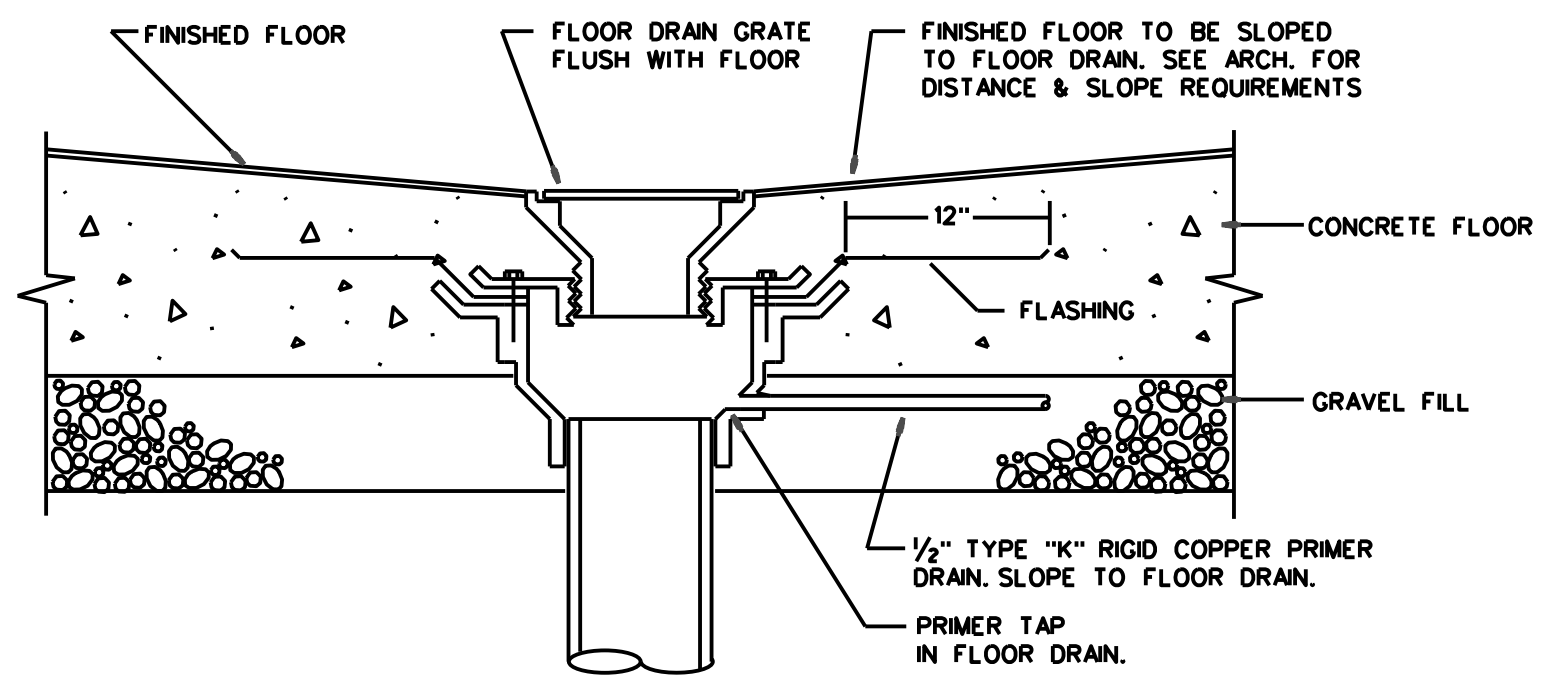
P1.0



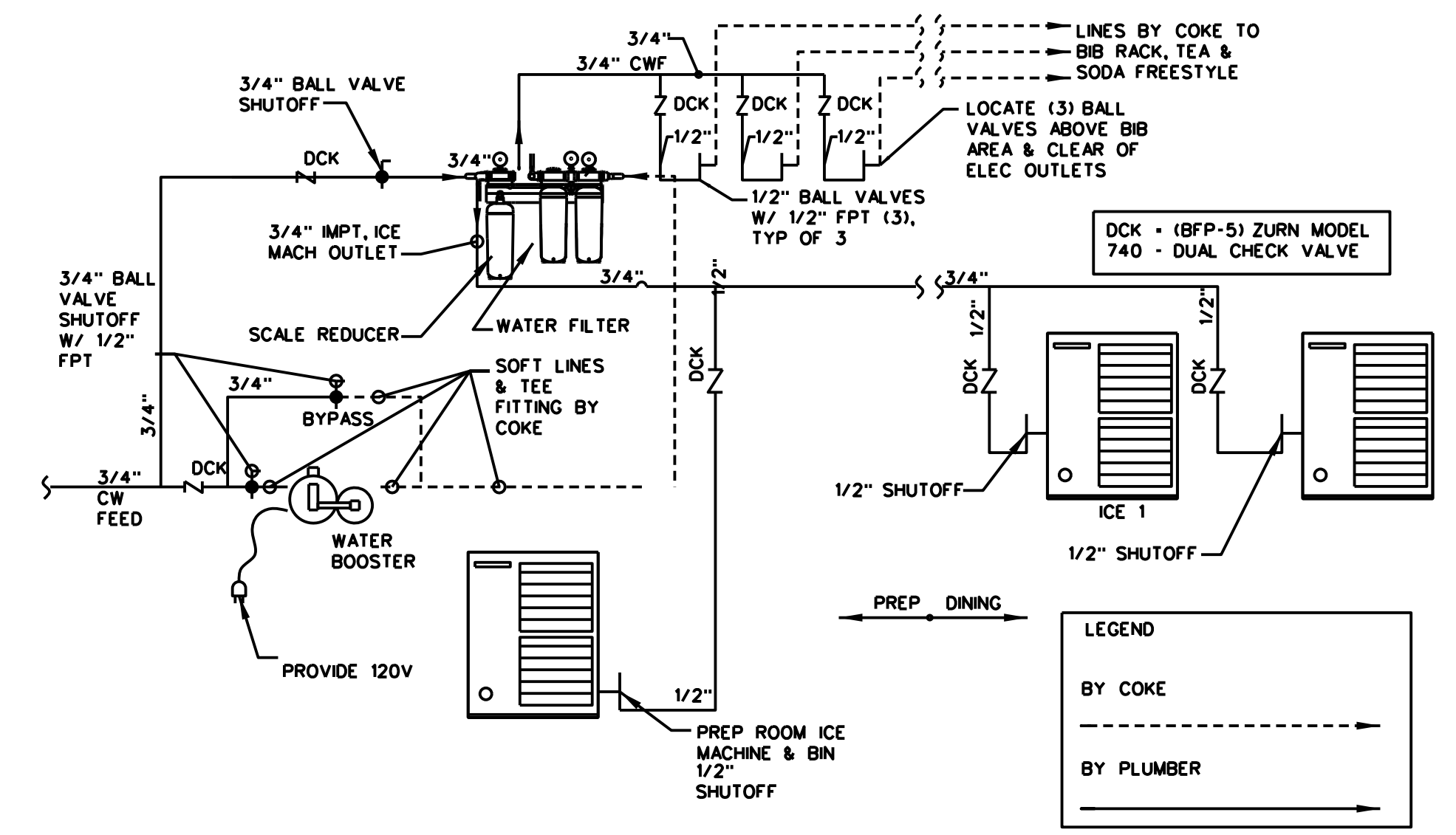
©HHArchitects, All Rights Reserved



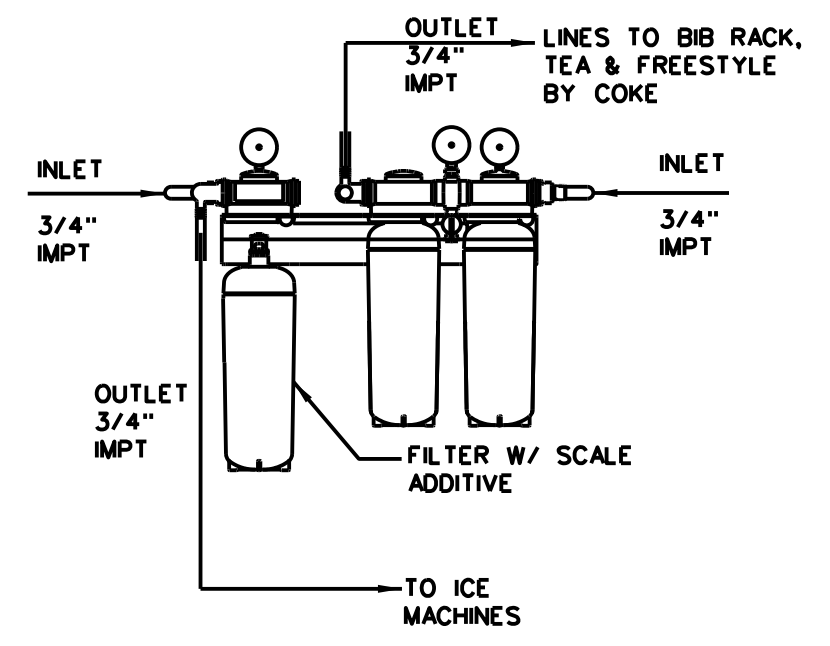
**TANKLESS GAS WATER HEATER
WATER HEATER DETAIL**
NOT TO SCALE



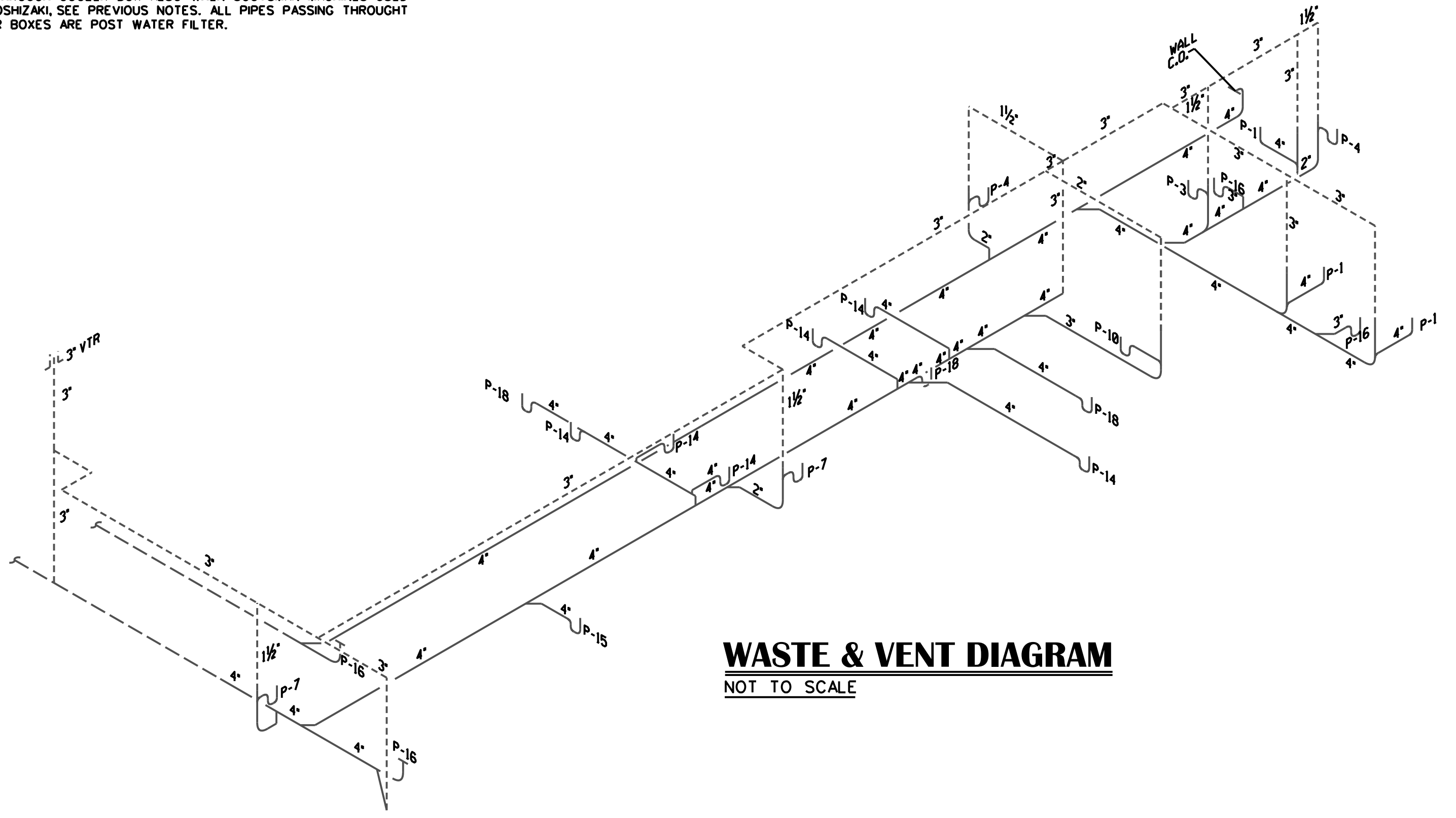
**TYPICAL FLOOR DRAIN DETAIL
@ CONC. FLOOR ON GRADE**
NOT TO SCALE



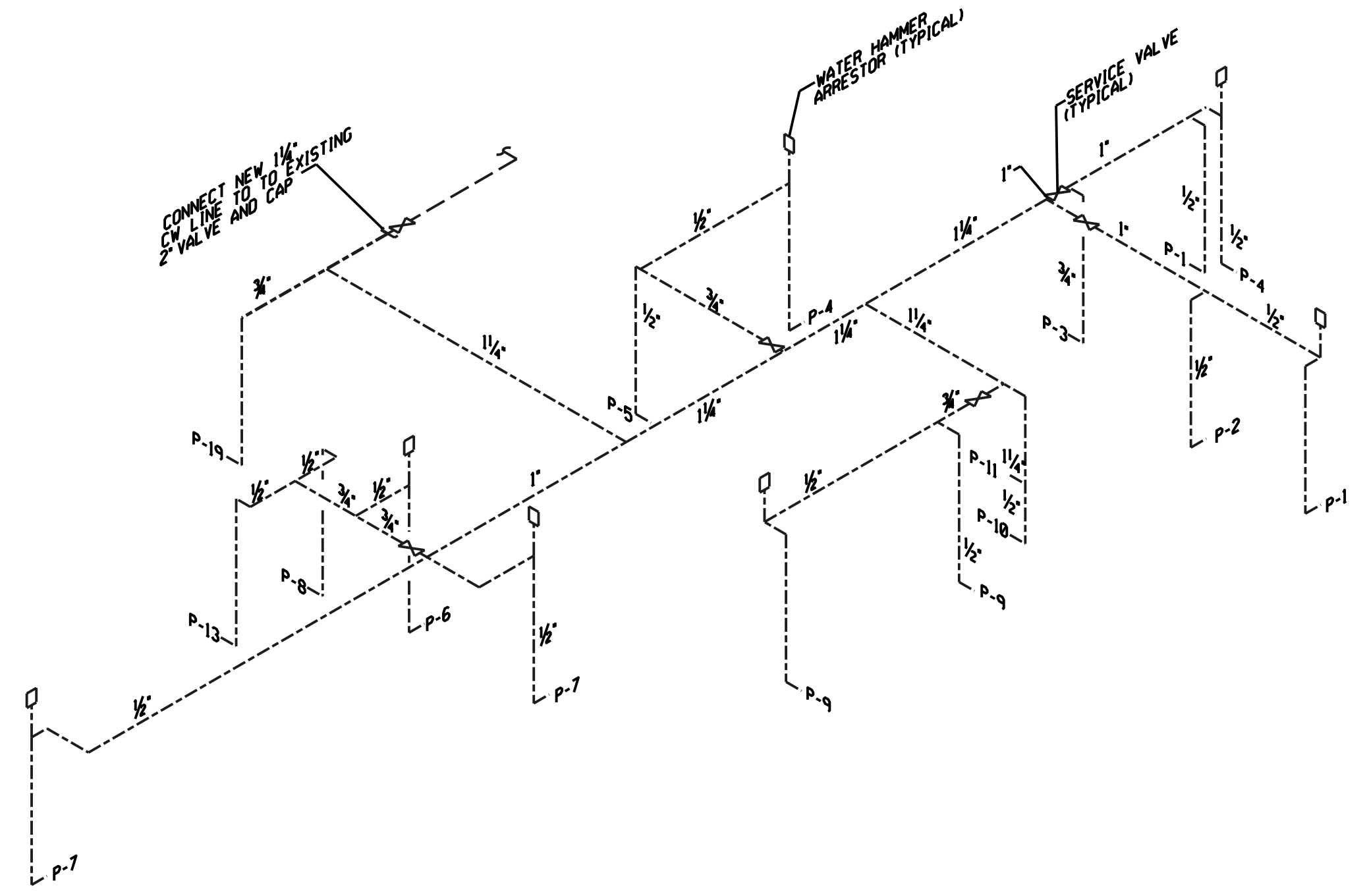
WATER FILTER DETAIL
NOT TO SCALE



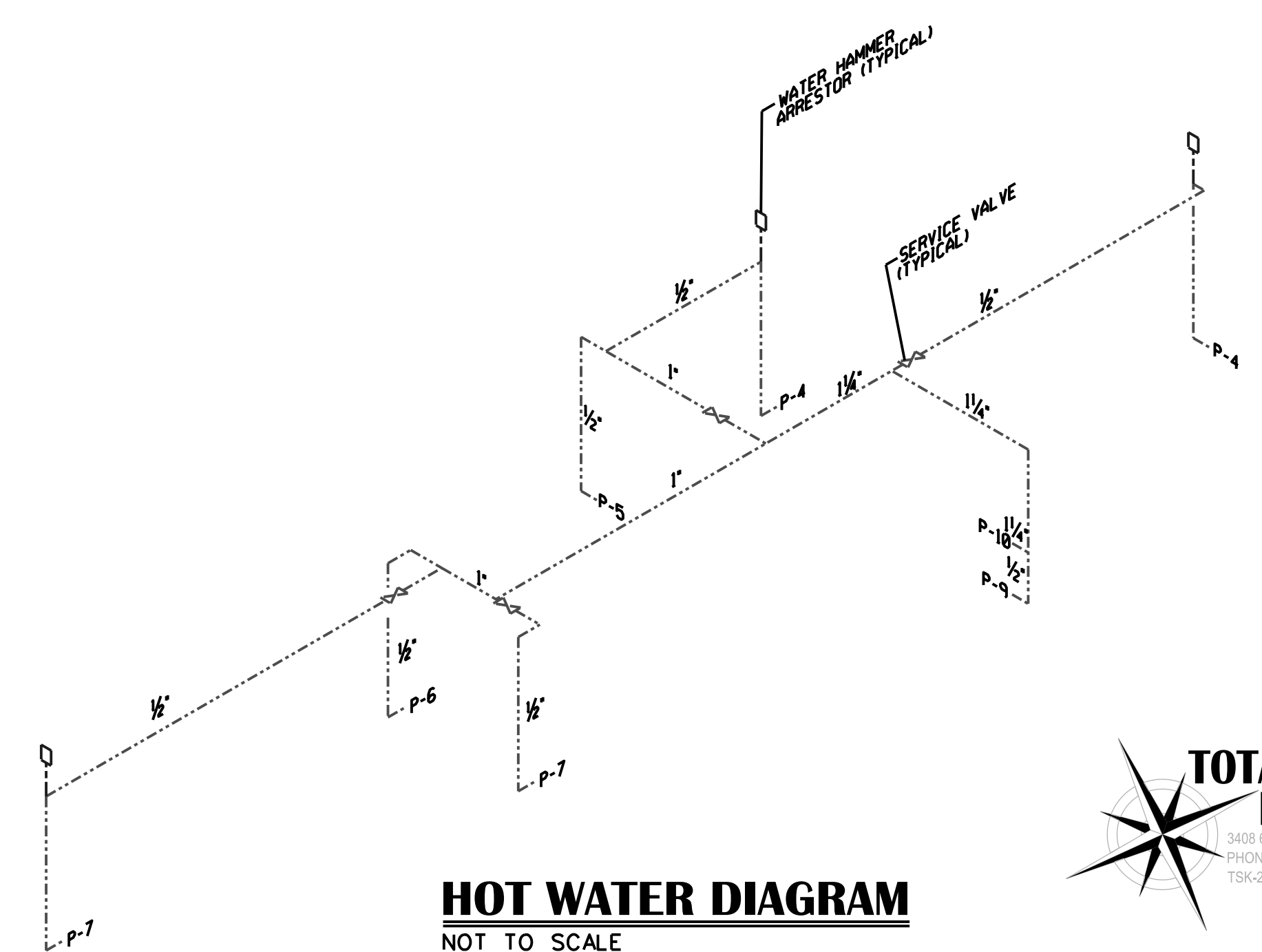
NOTE (ONLY IN SOUTHERN CLIMATES):
1/2" WATER LINE FOR SODA MACHINE TO PASS THROUGH THE COOLER BOX, COIL 50 FEET OF PIPING ON CEILING OF BOX (HANG AND SUPPORT AS REQUIRED) END AT BALL VALVE NEAR BIB RACK. SEAL PENETRATIONS THROUGH COOLER BOX, CAULK AS REQUIRED WITH NON-SHRINKABLE CAULK. 1/2" WATER LINE FOR ICE MACHINE TO PASS THROUGH COOLER BOX ALSO WHEN SCOTSMAN MACHINES USED NOT HOSHIZAKI, SEE PREVIOUS NOTES. ALL PIPES PASSING THROUGH COOLER BOXES ARE POST WATER FILTER.



WASTE & VENT DIAGRAM
NOT TO SCALE



COLD WATER DIAGRAM
NOT TO SCALE



HOT WATER DIAGRAM
NOT TO SCALE

Revision Schedule	
Rev. 3 Clarifications	6/14/21
Rev. 4 Fire Marshall Comments	9/29/21
Rev. 5 Range Hood	10/24/21
Change	

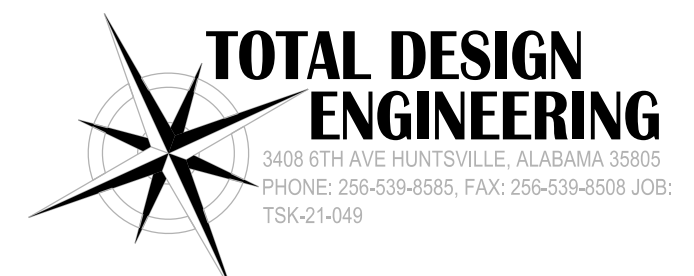


HH Architects, Inc.
We Believe | We Serve | We Create
2221 Lakeside Blvd | Suite 1100
Richardson Texas 75082
972-404-1034



FIVE GUYS
100 MOON SHOT DRIVE STE 110
MADISON, AL 35758

HH2015 04/06/2021
Construction Documents
PLUMBING DETAILS
&
DIAGRAMS



P2.0

©HHArchitects, All Rights Reserved