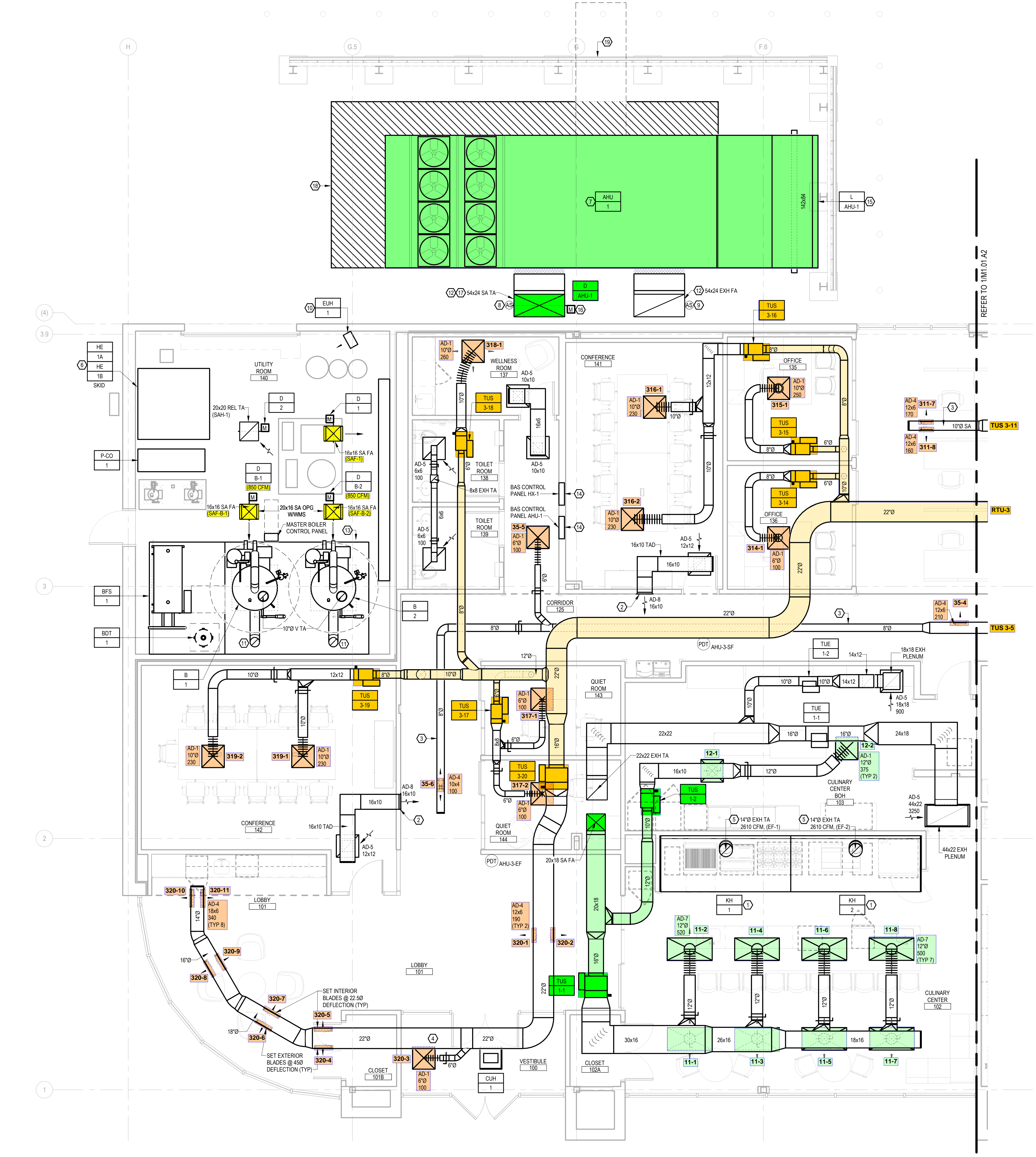


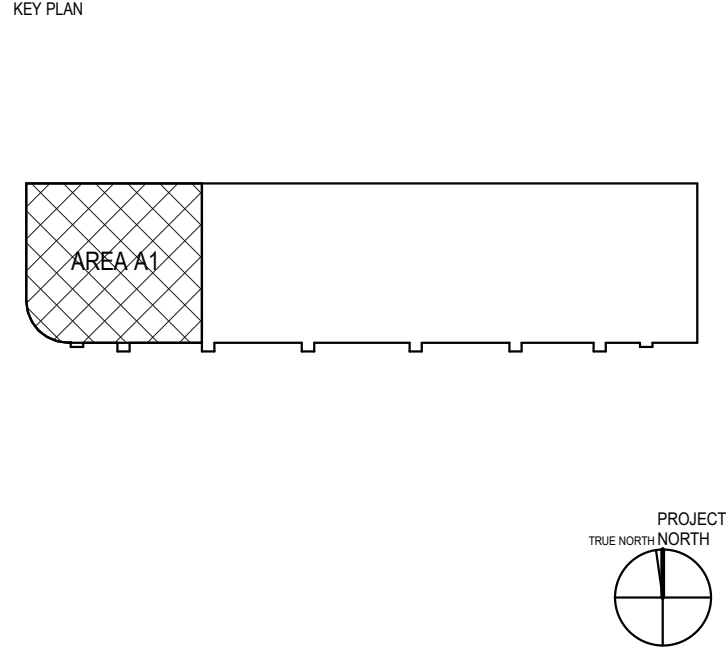
KEYED NOTES

1. PROVIDE NEW COMMERCIAL KITCHEN EXHAUST HOOD, MOUNT BOTTOM OF HOOD AT 7'-0" AFF. KITCHEN EXHAUST HOOD SHALL BE PROVIDED AS PART OF A COMPLETE KITCHEN EXHAUST SYSTEM INCLUDING EXHAUST FANS, GREASE DUCT, APPURTENANCES AND CONTROLS.
2. INSTALL BOTTOM OF GRILLE AT 12'-0" AFF.
3. INSTALL CENTERLINE OF EXPOSED DUCT AT 11'-0" AFF.
4. INSTALL CENTERLINE OF EXPOSED DUCT AT 13'-0" AFF.
5. GREASE DUCT PROVIDED AS PART OF THE COMMERCIAL KITCHEN EXHAUST PACKAGE.
6. HEATING HOT WATER SKID. INSTALL SKID ON HOUSEKEEPING PAD. COORDINATE EQUIPMENT PAD DIMENSIONS WITH APPROVED EQUIPMENT.
7. INSTALL NEW AIR HANDLING UNIT AND FLENUM CURB ON NEW EQUIPMENT PAD WITH APPROVED AIR HANDLING UNIT SHOP DRAWINGS. SEE STRUCTURAL DRAWINGS FOR PAD DETAIL.
8. INSTALL DUCT MOUNTED SMOKE DETECTOR DOWNSTREAM OF SMOKE DAMPER. PROVIDE WEATHERPROOF ENCLOSURE FOR SMOKE DETECTOR.
9. INSTALL DUCT MOUNTED SMOKE DETECTOR IN WEATHERPROOF ENCLOSURE AT APPROXIMATELY 8'-0" ABOVE GRADE.
10. INSTALL ELECTRIC UNIT HEATER ON WALL BRACKET AT 12'-0" AFF.
11. 10" DOUBLE WALL BOILER FLUE UP TO ROOF.
12. SECURE DUCTWORK TO EXTERIOR OF THE BUILDING. SEE STRUCTURAL DRAWINGS FOR VERTICAL DUCT SUPPORT DETAIL.
13. BOILER SKID. INSTALL SKID ON HOUSEKEEPING PAD. COORDINATE PAD DIMENSIONS WITH APPROVED EQUIPMENT.
14. BAS PANEL SHALL BE FLUSH MOUNTED.
15. INSTALL NEW 142"x84" OUTDOOR AIR INTAKE LOUVER (GREENHECK, MODEL: ESD OR APPROVED EQUAL). LOCATE LOUVER APPROXIMATELY 18" FROM SCREENWALL. SUPPORT LOUVER AND ASSOCIATED DUCTWORK AS REQUIRED. LOUVER SIZED FOR A MAXIMUM OF 500 FPM ACROSS THE FREE AREA AT THE MAXIMUM AIRFLOW FOR THE AIR HANDLING UNIT.
16. INSTALL DUCT MOUNTED SMOKE DAMPER IMMEDIATELY ABOVE FLANGED SECTION OF DUCTWORK.
17. PROVIDE FLANGED SECTION OF VERTICAL DUCTWORK ALONGSIDE AIR HANDLING UNIT TO ALLOW FOR ACCESS TO THE AHU NATURAL GAS SECTION. COORDINATE EXTENT OF DUCTWORK WITH INSTALLED CONDITION.
18. CATWALK TO PROVIDE ACCESS TO AIR HANDLING UNIT. FURNISHED WITH AIR HANDLING UNIT.
19. REMOVABLE SECTION OF SCREEN WALL. SEE ARCHITECTURAL PLANS FOR MORE DETAIL.



1 DUCTWORK PLAN (AREA A1)
 1/4" = 1'-0"
 0 2 4 6 8

C	01/13/2023	BID/PERMIT ISSUE	DSS
B	11/18/2022	OWNER REVIEW ISSUE	DSS
A	10/13/2022	OWNER REVIEW ISSUE	SDA
REV	DATE	DESCRIPTION	BY



CLIENT
ADM
 PACIFIC AVENUE, ERLANGER, KY 41018

PROJECT TITLE
PAC 3 FIT OUT
 DRAWING TITLE
MECHANICAL DUCTWORK PLAN (AREA A1)

PROJECT MANAGER	JCC	DRAWN BY	KEM	SEAL
PROJECT LEADS	PEM	ENGINEERING	DSS	
QUALITY REVIEWS				
DISCIPLINE REVIEW	MJW	DC REVIEW	MJW	QA REVIEW
			JES	

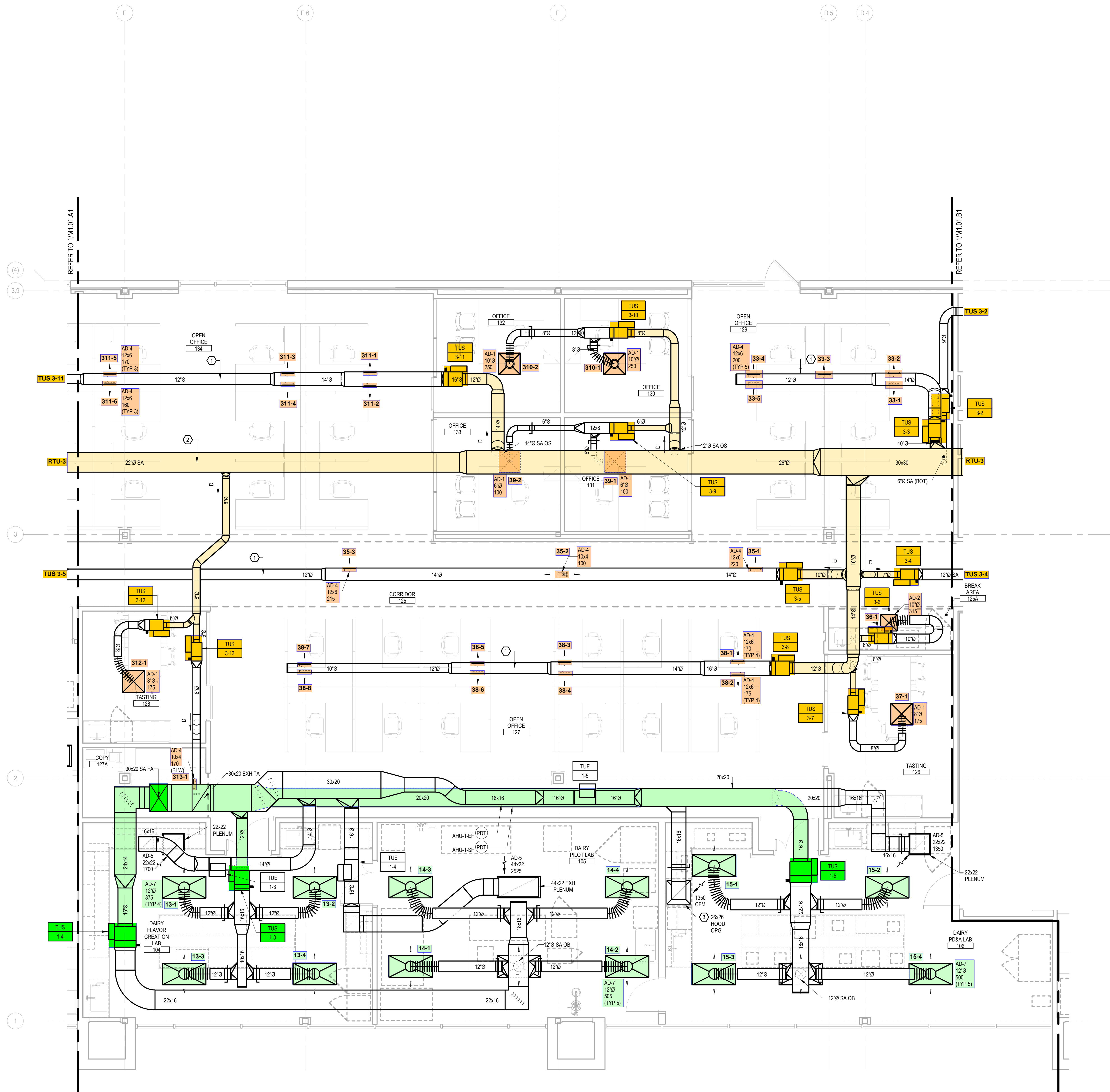
CONSTRUCTION ISSUE DATE	PROJECT NUMBER	FILE NAME
	22159	22159-MECH

DRAWING NUMBER
M1.01.A1

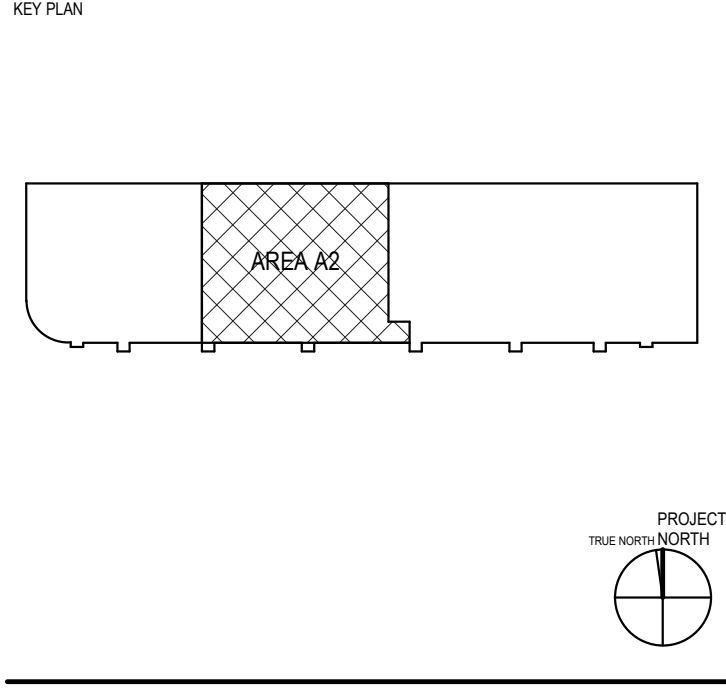
FOR PERMIT ONLY

KEYED NOTES

1. INSTALL CENTERLINE OF EXPOSED DUCT AT 11'-0" AFF.
2. INSTALL CENTERLINE OF EXPOSED DUCT AT 13'-0" AFF.
3. CENTER CANOPY HOOD OVER RANGE.



C	01/13/2023	BID/PERMIT ISSUE	DSS
B	11/18/2022	OWNER REVIEW ISSUE	DSS
A	10/13/2022	OWNER REVIEW ISSUE	SDA
REV	DATE	DESCRIPTION	BY



CLIENT

ADM
 PACIFIC AVENUE, ERLANGER, KY 41018

PROJECT TITLE

PAC 3 FIT OUT

DRAWING TITLE

MECHANICAL DUCTWORK PLAN (AREA A2)

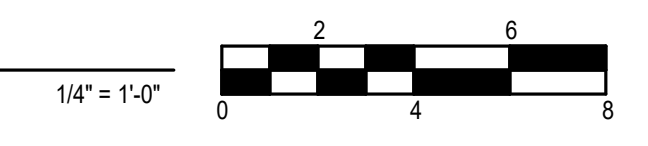
PROJECT MANAGER	JCC	DRAWN BY	KEM	SEAL
PROJECT LEADS	PEM	ENGINEERING	DSS	
QUALITY REVIEWS				
DISCIPLINE REVIEW	MJW	DC REVIEW	MJW	QA REVIEW
			JES	

CONSTRUCTION ISSUE DATE	PROJECT NUMBER	FILE NAME
	22159	22159-MECH
DRAWING NUMBER		

M1.01.A2

FOR PERMIT ONLY

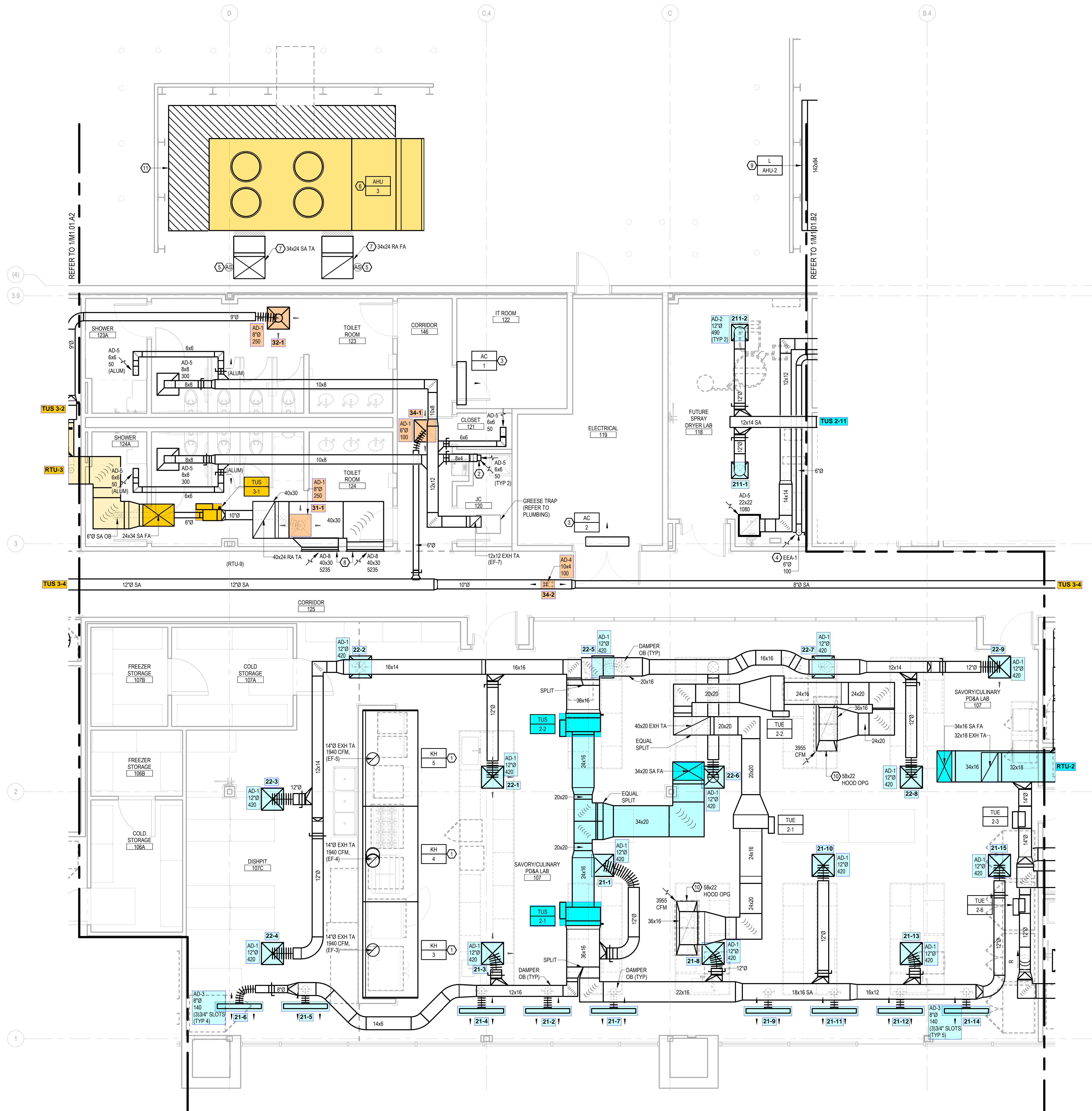
1
 M1.01.A2
 DUCTWORK PLAN (AREA A2)



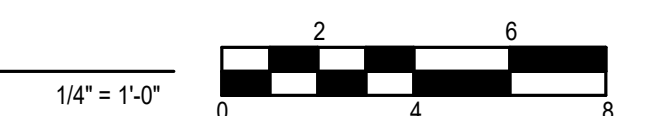
1/13/2023 12:42:57 PM c:\paw\paw\paw\22159\MECH\M1.01.A2.dwg

KEYED NOTES

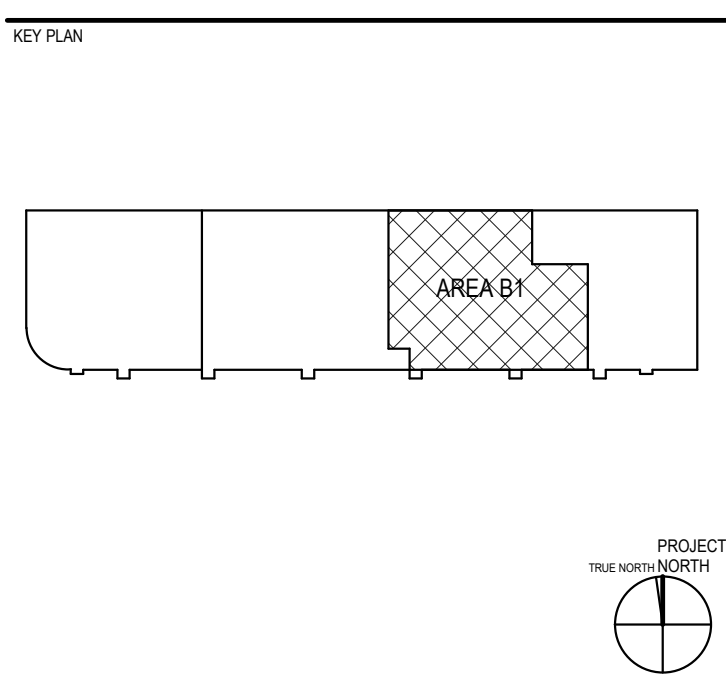
1. PROVIDE NEW COMMERCIAL KITCHEN EXHAUST HOOD. MOUNT BOTTOM OF HOOD AT 6'-11" AFF. KITCHEN EXHAUST HOOD SHALL BE PROVIDED AS PART OF A COMPLETE KITCHEN EXHAUST SYSTEM INCLUDING EXHAUST FANS, GREASE DUCT, APPURTENANCES AND CONTROLS.
2. PROVIDE (2) EXHAUST AIR DEVICES IN DROP AND BALANCE TO STATED CFM. REFER TO LOW / HIGH WALL EXHAUST DETAIL FOR ADDITIONAL INFORMATION.
3. MOUNT DX SPLIT SYSTEM ON WALL AND CENTER ABOVE THE DOOR.
4. WALL MOUNTED EXTRACTION ARM. PROVIDE HARDWARE AS REQUIRED.
5. INSTALL DUCT MOUNTED SMOKE DETECTOR IN WEATHERPROOF ENCLOSURE AT APPROXIMATELY 8'-0" ABOVE GRADE.
6. INSTALL NEW AIR HANDLING UNIT AND PLENUM CURB ON NEW EQUIPMENT PAD WITH APPROVED AIR HANDLING UNIT SHOP DRAWINGS. SEE STRUCTURAL DRAWINGS FOR PAD DETAIL.
7. SECURE DUCTWORK TO EXTERIOR OF THE BUILDING. SEE STRUCTURAL DRAWINGS FOR VERTICAL DUCT SUPPORT DETAIL.
8. INSTALL BOTTOM OF GRILLE AT 12'-0" AFF.
9. INSTALL NEW 142"x84" OUTDOOR AIR INTAKE LOUVER (GREENHECK, MODEL: ESD OR APPROVED EQUAL). LOCATE LOUVER APPROXIMATELY 18" FROM SCREENWALL. SUPPORT LOUVER AND ASSOCIATED DUCTWORK AS REQUIRED. LOUVER SIZED FOR A MAXIMUM OF 500 FPM ACROSS THE FREE AREA AT THE MAXIMUM AIRFLOW FOR THE AIR HANDLING UNIT.
10. CENTER CANOPY HOOD OVER RANGE.
11. CATWALK TO PROVIDE ACCESS TO AIR HANDLING UNIT. FURNISHED WITH AIR HANDLING UNIT.



1 DUCTWORK PLAN (AREA B1)
 M1.01.B1



REV	DATE	DESCRIPTION	BY
C	01/13/2023	BID/PERMIT ISSUE	DSS
B	11/18/2022	OWNER REVIEW ISSUE	DSS
A	10/13/2022	OWNER REVIEW ISSUE	SDA



CLIENT
ADM
 PACIFIC AVENUE, ERLANGER, KY 41018

PROJECT TITLE
PAC 3 FIT OUT

DRAWING TITLE
MECHANICAL DUCTWORK PLAN (AREA B1)

PROJECT MANAGER	JCC	DRAWN BY	KEM	SEAL
PROJECT LEADS		ARCHITECTURE	ENGINEERING	
	PEM		DSS	
QUALITY REVIEWS				
DISCIPLINE REVIEW	DC REVIEW	QA REVIEW		
MJW	MJW	JES		

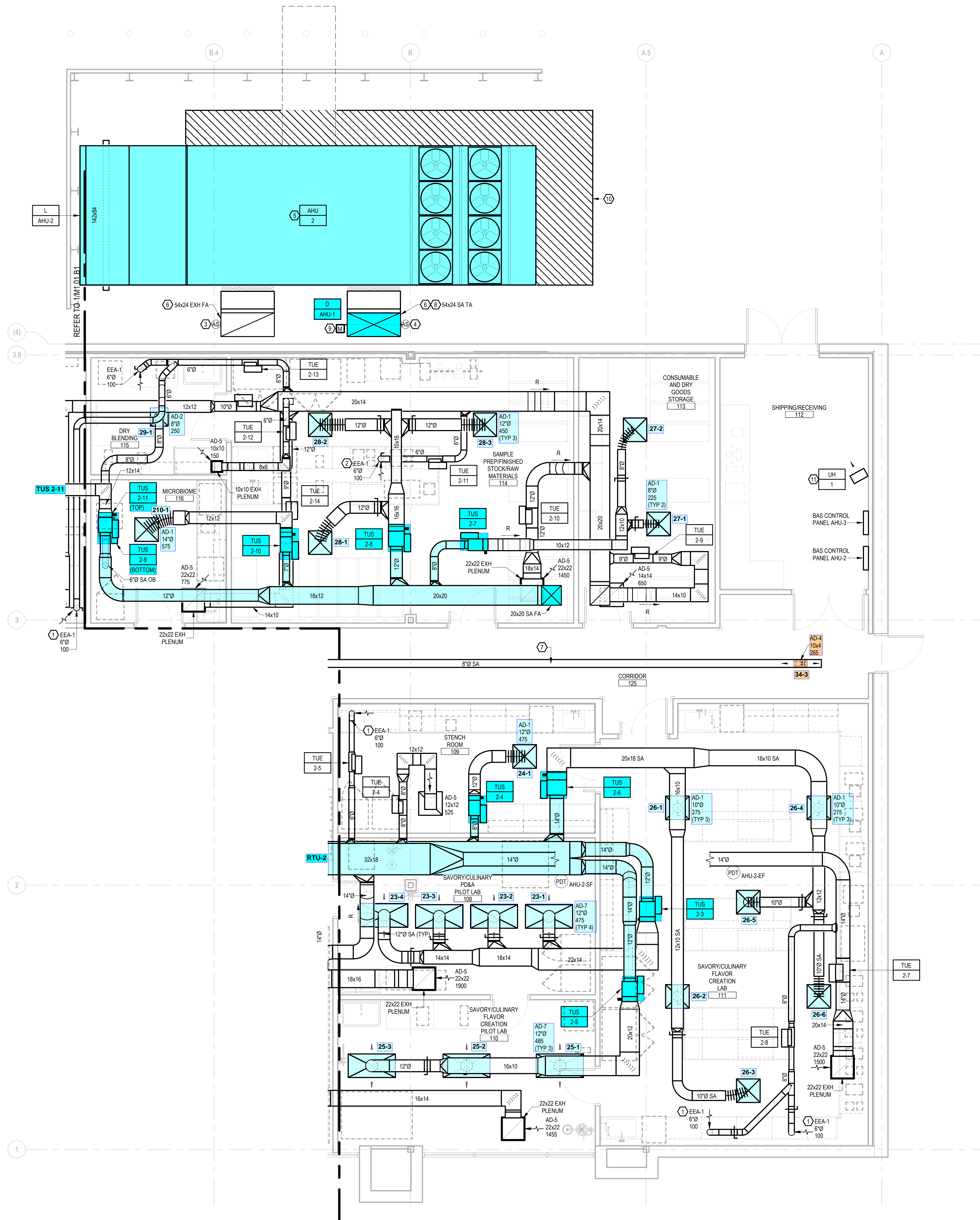
CONSTRUCTION ISSUE DATE	PROJECT NUMBER	FILE NAME
	22159	22159-MECH

DRAWING NUMBER
M1.01.B1

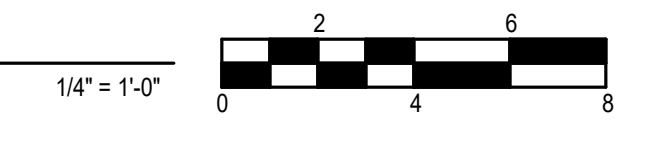
FOR PERMIT ONLY

KEYED NOTES

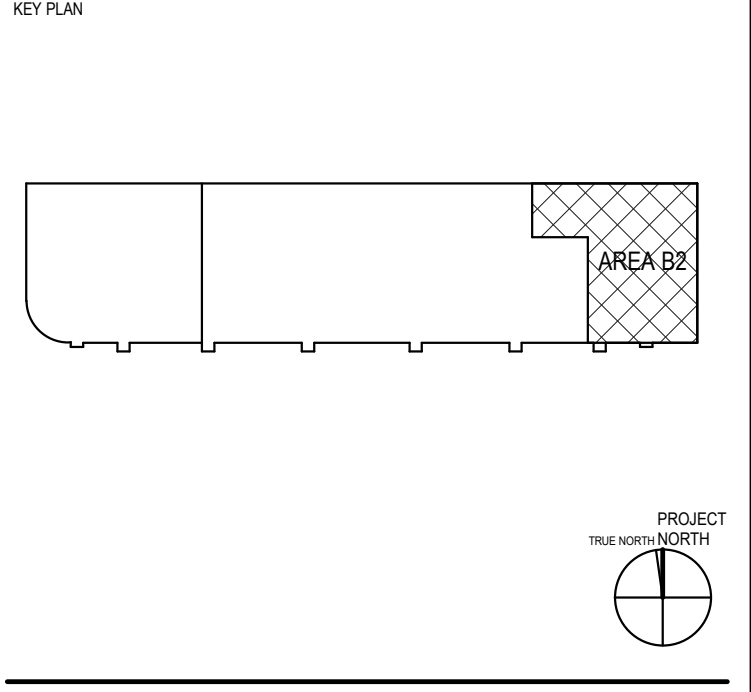
- 1 WALL MOUNTED EXTRACTION ARM. PROVIDE HARDWARE AS REQUIRED.
- 2 CEILING MOUNTED EXTRACTION ARM. COORDINATE STRUCTURAL REQUIREMENTS WITH STRUCTURAL CONTRACTOR.
- 3 INSTALL DUCT MOUNTED SMOKE DETECTOR IN WEATHERPROOF ENCLOSURE AT APPROXIMATELY 8'-0" ABOVE GRADE.
- 4 INSTALL DUCT MOUNTED SMOKE DETECTOR DOWNSTREAM OF SMOKE DAMPER. PROVIDE WEATHERPROOF ENCLOSURE FOR SMOKE DETECTOR.
- 5 INSTALL NEW AIR HANDLING UNIT AND PLENUM CURB ON NEW EQUIPMENT PAD WITH APPROVED AIR HANDLING UNIT SHOP DRAWINGS. SEE STRUCTURAL DRAWINGS FOR PAD DETAIL.
- 6 SECURE DUCTWORK TO EXTERIOR OF THE BUILDING. SEE STRUCTURAL DRAWINGS FOR VERTICAL DUCT SUPPORT DETAIL.
- 7 INSTALL CENTERLINE OF EXPOSED DUCT AT 11'-0" AFF.
- 8 PROVIDE FLANGED SECTION OF VERTICAL DUCTWORK ALONGSIDE AIR HANDLING UNIT TO ALLOW FOR ACCESS TO THE AHU NATURAL GAS SECTION. COORDINATE EXTENT OF DUCTWORK WITH INSTALLED CONDITION.
- 9 INSTALL DUCT MOUNTED SMOKE DAMPER IMMEDIATELY ABOVE FLANGED SECTION OF DUCTWORK.
- 10 CATWALK TO PROVIDE ACCESS TO AIR HANDLING UNIT. FURNISHED WITH AIR HANDLING UNIT.
- 11 MOUNT AT 11'-0" ABOVE FINISHED FLOOR WITH MANUFACTURERS PROVIDED WALL-MOUNTING BRACKET.



1 DUCTWORK PLAN (AREA B2)
 M1.01.B2



C	01/13/2023	BID/PERMIT ISSUE	DSS
B	11/18/2022	OWNER REVIEW ISSUE	DSS
A	10/13/2022	OWNER REVIEW ISSUE	SDA
REV	DATE	DESCRIPTION	BY



PROJECT TITLE
PAC 3 FIT OUT

DRAWING TITLE
MECHANICAL DUCTWORK PLAN (AREA B2)

PROJECT MANAGER	JCC	DRAWN BY	KEM	SEAL
PROJECT LEADS	PEM	ENGINEERING	DSS	
QUALITY REVIEWS				
DISCIPLINE REVIEW	MJW	DC REVIEW	MJW	QA REVIEW
			JES	

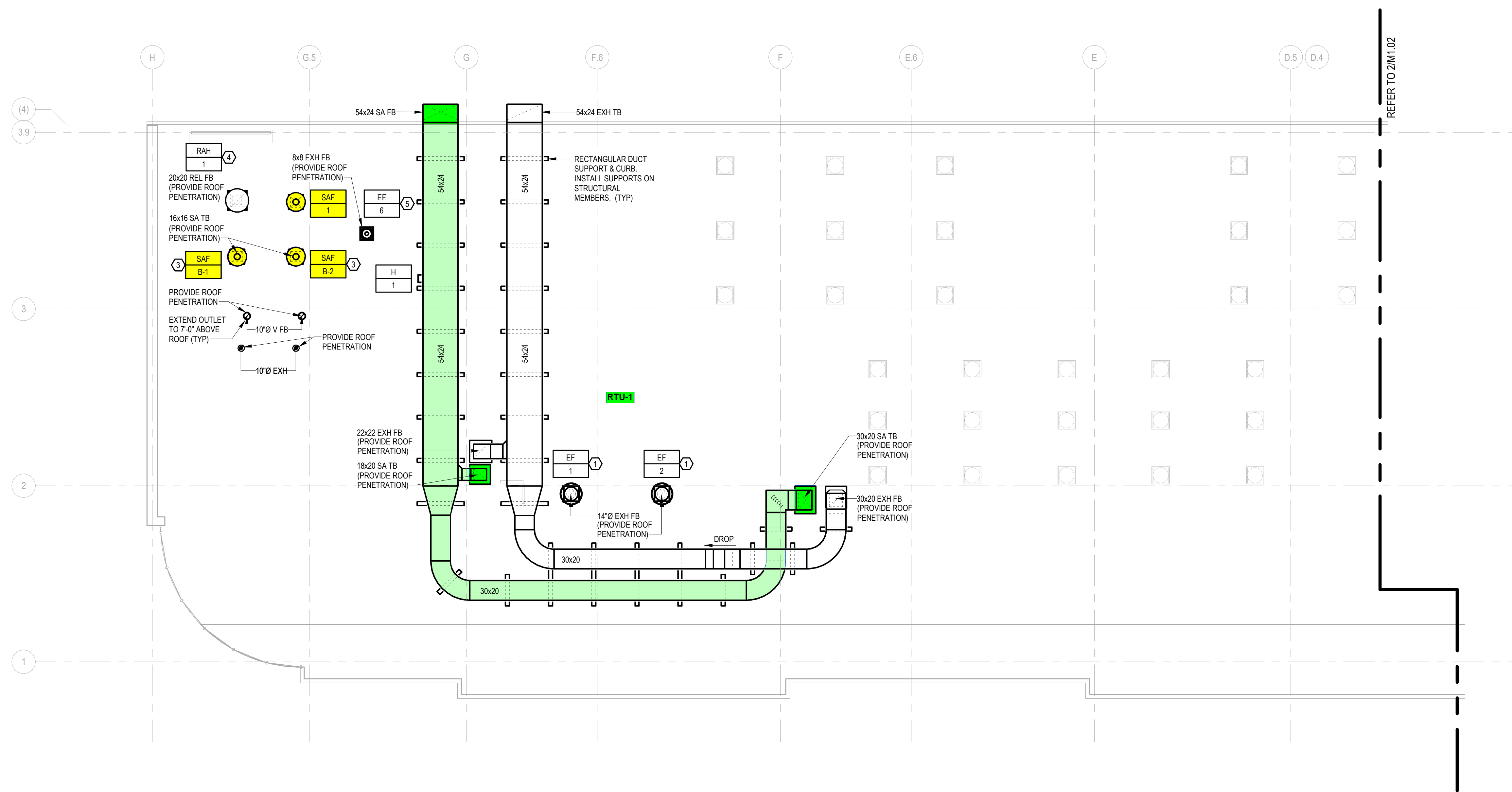
CONSTRUCTION ISSUE DATE	PROJECT NUMBER	FILE NAME
	22159	22159-MECH
DRAWING NUMBER		

M1.01.B2

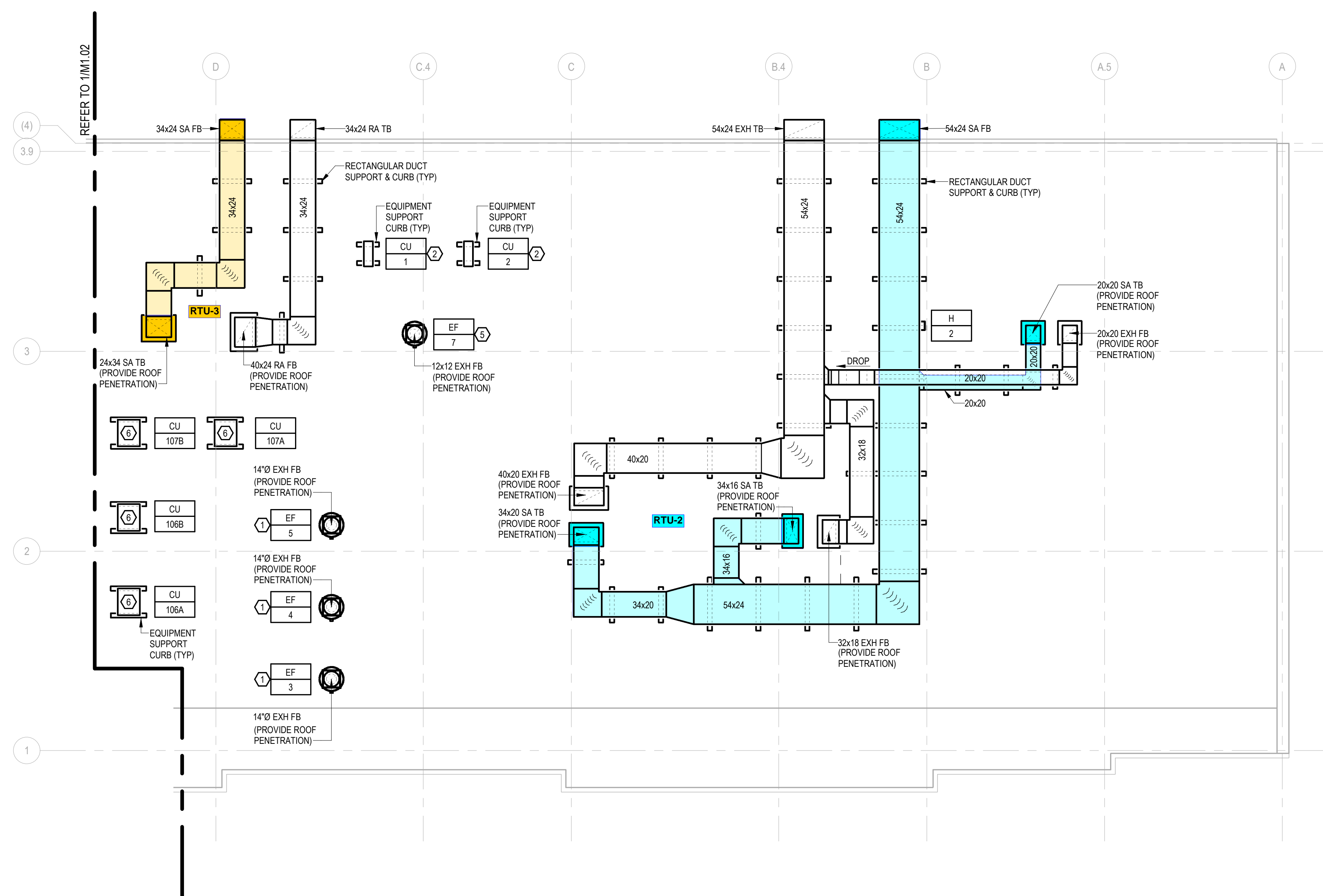
FOR PERMIT ONLY

KEYED NOTES

- MECHANICAL CONTRACTOR SHALL PROVIDE EXHAUST FAN SYSTEM CONNECTED TO COMMERCIAL KITCHEN VENTILATION SYSTEM INCLUDING SUPPORTS, CONTROLS AND ASSOCIATED APPURTENANCES. INSTALL UNIT IN ACCORDANCE WITH MANUFACTURERS RECOMMENDATIONS. SET UNIT LEVEL AND PLUMB ON TOP OF ROOF MOUNTING CURB PER MANUFACTURERS RECOMMENDATIONS. REFER TO ELECTRICAL FOR POWER CONNECTIONS. REFER TO STRUCTURAL FOR ADDITIONAL INFORMATION.
- MECHANICAL CONTRACTOR SHALL PROVIDE SPLIT SYSTEM CONDENSING UNIT INCLUDING REFRIGERANT PIPING, CONTROLS AND ASSOCIATED APPURTENANCES. MOUNT UNIT LEVEL AND PLUMB ON TOP OF ROOF CURB SUPPORT SYSTEM PER MANUFACTURERS RECOMMENDATIONS. REFER TO ELECTRICAL DRAWINGS FOR POWER CONNECTIONS.
- MECHANICAL CONTRACTOR SHALL PROVIDE SUPPLY AIR FAN UNIT IN ITS ENTIRETY INCLUDING 18" HIGH BASE SUPPORT (MIN) CONTROLS AND ASSOCIATED APPURTENANCES. SET BASE SUPPORT LEVEL AND PLUMB PER MANUFACTURERS RECOMMENDATIONS ON TOP OF ROOF. REFER TO ELECTRICAL DRAWINGS FOR ADDITIONAL INFORMATION.
- MECHANICAL CONTRACTOR SHALL PROVIDE RELIEF AIR HOOD IN ITS ENTIRETY INCLUDING 18" HIGH BASE SUPPORT (MIN) AND ASSOCIATED APPURTENANCES. SET BASE SUPPORT LEVEL AND PLUMB PER MANUFACTURERS RECOMMENDATIONS ON TOP OF ROOF.
- MECHANICAL CONTRACTOR SHALL PROVIDE EXHAUST FAN UNIT IN ITS ENTIRETY INCLUDING 18" HIGH BASE SUPPORT (MIN) CONTROLS AND ASSOCIATED APPURTENANCES. SET BASE SUPPORT LEVEL AND PLUMB PER MANUFACTURERS RECOMMENDATIONS ON TOP OF ROOF. REFER TO ELECTRICAL DRAWINGS FOR ADDITIONAL INFORMATION.
- MECHANICAL CONTRACTOR SHALL PROVIDE COLD ROOM SPLIT SYSTEM CONDENSING UNIT INCLUDING REFRIGERANT PIPING, CONTROLS AND ALL ASSOCIATED APPURTENANCES. MOUNT UNIT LEVEL AND PLUMB ON TOP OF ROOF CURB SUPPORT SYSTEM PER MANUFACTURERS RECOMMENDATIONS. REFER TO ELECTRICAL DRAWINGS FOR POWER CONNECTIONS.

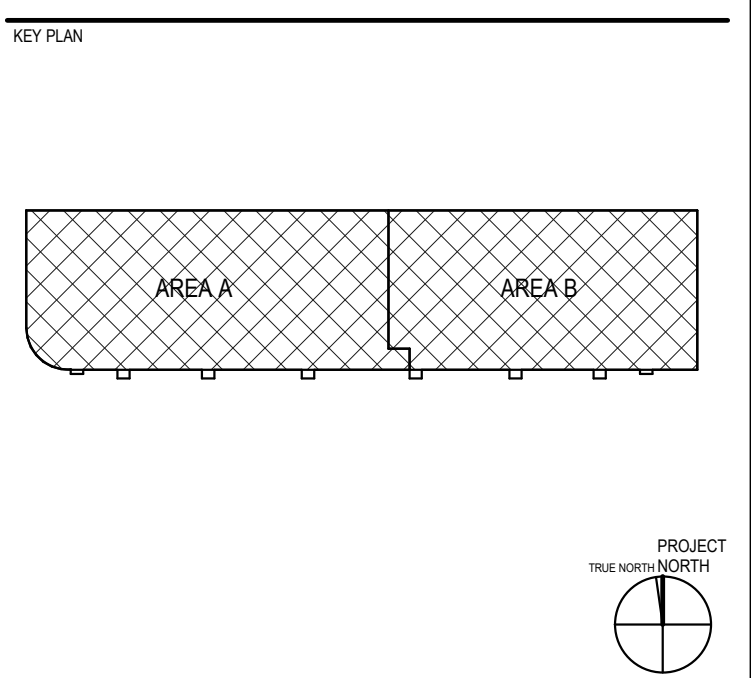


1 ROOF DUCTWORK PLAN (AREA A)
 M1.02



2 ROOF DUCTWORK PLAN (AREA B)
 M1.02

REV	DATE	DESCRIPTION	BY
D	01/13/2023	BID/PERMIT ISSUE	DSS
C	11/18/2022	OWNER REVIEW ISSUE	DSS
B	10/13/2022	OWNER REVIEW ISSUE	SDA
A	07/29/2022	CONCEPT ISSUE	DSS



CLIENT
ADM
 PACIFIC AVENUE, ERLANGER, KY 41018

PAC 3 FIT OUT

MECHANICAL ROOF DUCTWORK PLANS

PROJECT MANAGER JCC	DRAWN BY KEM	SEAL
ARCHITECTURE PEM	ENGINEERING DSS	
QUALITY REVIEWS		
DISCIPLINE REVIEW MJW	DC REVIEW MJW	QA REVIEW JES

CONSTRUCTION ISSUE DATE	PROJECT NUMBER	FILE NAME
	22159	22159-MECH

DRAWING NUMBER
M1.02

FOR PERMIT ONLY

1/13/2023 12:41:05 PM c:\naac\lmp\14627018\MECH\m1.02.dwg