

- MECHANICAL PLAN NOTES:**
- CONDENSING UNITS SHALL BE INSTALLED ON ROOF. UNITS SHALL BE INSTALLED PER MANUFACTURER'S INSTRUCTIONS WITH THE UNIT LOCATION COORDINATED WITH EXISTING CONDITIONS. SIZE AND PROVIDE REFRIGERANT PIPING PER MANUFACTURER'S RECOMMENDATION.
 - INSTALL BOTTOM OF UNIT 2'-0" ABOVE CEILING.
 - MOUNT TEMPERATURE SENSOR IN RETURN AIR DUCTWORK. CONNECT SENSOR TO ASSOCIATED THERMOSTAT.
 - RELOCATE EXISTING THERMOSTAT TO LOCATION SHOWN. PROVIDE ADDITIONAL CONTROL WIRING AS NECESSARY.
 - NOT USED**
 - CEILING DIFFUSER INSTALLED IN INACCESSIBLE CEILING SHALL HAVE CABLE OPERATED DAMPER FOR AIR BALANCING. PROVIDE CABLE OPERATED VOLUME DAMPER BY METROPLATAN AIR TECHNOLOGIES MODEL RT-250 WITH EXTERNAL WORM GEAR OR YOUNG REGULATOR EQUIVALENT BUTTERFLY DAMPER WITH 270-275 CONTROLLER. DAMPER CABLE ACTUATOR SHALL BE ACCESSIBLE FOR BALANCING FROM THE PLENUM OF A SLOT DIFFUSER OR THE TOP OF A SQUARE OR ROUND FACE DIFFUSER AS APPLICABLE. INSTALL VOLUME DAMPER AT LOCATION INDICATED ON PLAN. CEILING CUP LOCATION SHALL BE COORDINATED WITH ARCHITECT.

HENDERSON ENGINEERS
 8345 LENEVA DRIVE, SUITE 300
 LENEXA, KS 66314
 TEL: 913.742.5000 FAX: 913.742.5001
 WWW.HENDERSONENGINEERS.COM
 215001\535
 TX, CORPORATE NUMBER: F-001236
 08/02/21

Perry's STEAKHOUSE & GRILLE
 RARE & WELL DONE®
 2115 TOWN SQUARE PLACE
 SUGAR LAND, TX 77479

FIELD VERIFICATION
 Contractor shall verify all figured dimensions and conditions at the job site and notify Aisa Group Architects, Inc. of any dimensional errors, omissions or discrepancies before beginning or fabricating any work. Do not scale these drawings.

COPYRIGHT
 Aisa Group Architects, Inc. shall retain all common law, statutory and other reserved rights. These drawings and related documents shall not be duplicated, disclosed or otherwise used without written consent of Aisa Group Architects, Inc.

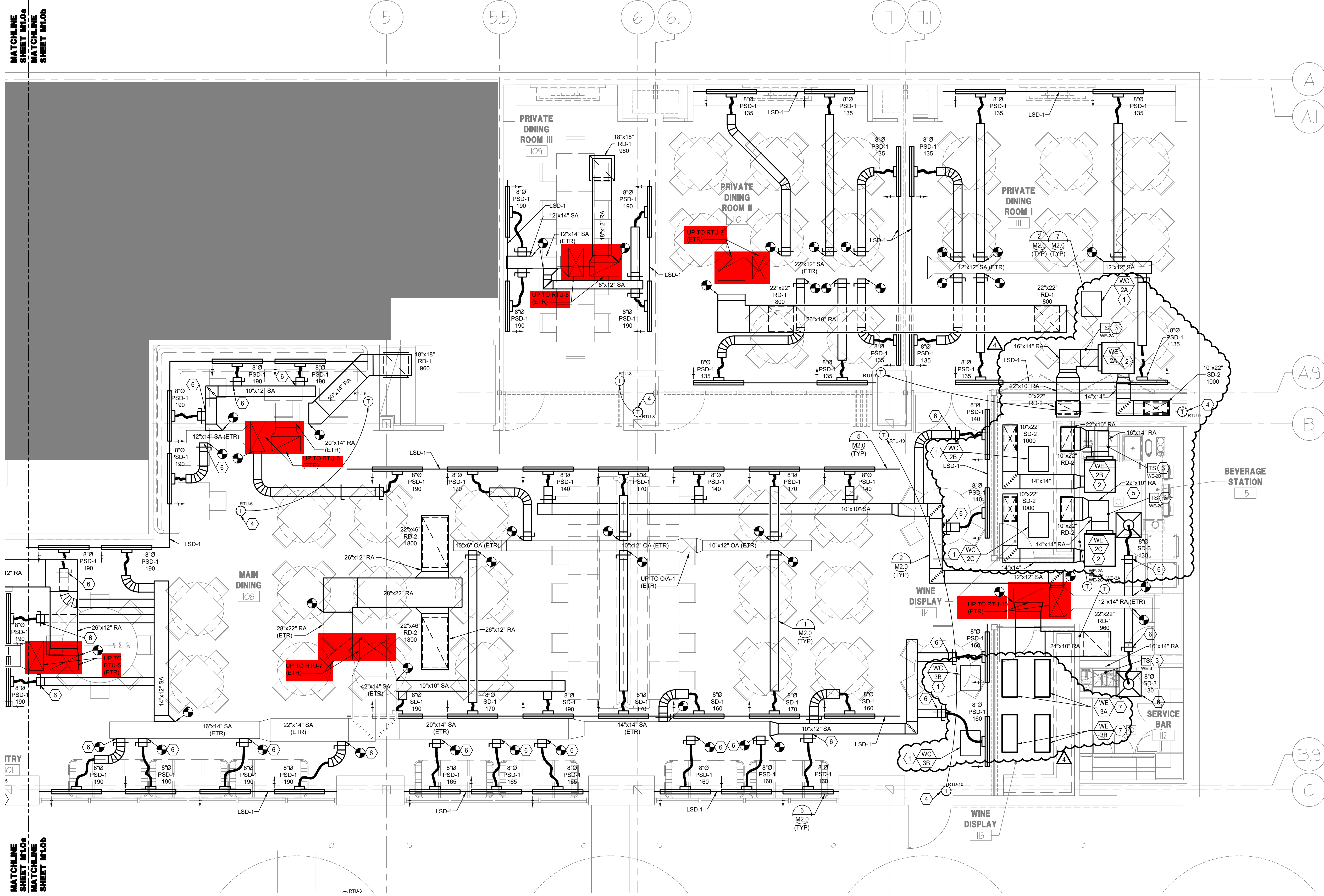
No	Date	Remarks
1	08/02/21	B9K-M1.0A
2	06/29/21	ISSUED FOR CONSTRUCTION
3	05/15/21	ISSUED FOR PERMITS
4	04/30/21	ISSUED FOR BIDDING
5	03/06/21	ISSUED FOR PRELIMINARY SUBMITTAL

THIS DOCUMENT IS RELEASED FOR THE PURPOSE OF PRELIMINARY SUBMITTAL ONLY. M. IMACY LICENSE # 132149
 IT IS NOT TO BE USED FOR CONSTRUCTION PURPOSES.

Drawing Title	
MECHANICAL FLOOR PLAN SEGMENT A	
Job No.	Drawn
204628	SK
Scale	Date
A5 NOTED	04/30/21

Sheet No.
M1.0a

1 MECHANICAL FLOOR PLAN - SEGMENT A
 SCALE: 1/4"=1'-0"



1 MECHANICAL FLOOR PLAN - SEGMENT B
SCALE: 1/4"=1'-0"

- MECHANICAL PLAN NOTES:
- CONDENSING UNITS SHALL BE INSTALLED ON ROOF. UNITS SHALL BE INSTALLED PER MANUFACTURER'S INSTRUCTIONS WITH THE UNIT LOCATION COORDINATED WITH EXISTING CONDITIONS. SIZE AND PROVIDE REFRIGERANT PIPING PER MANUFACTURER'S RECOMMENDATION.
 - INSTALL BOTTOM OF UNIT 2'-0" ABOVE CEILING.
 - MOUNT TEMPERATURE SENSOR IN RETURN AIR DUCTWORK. CONNECT SENSOR TO ASSOCIATED THERMOSTAT.
 - RELOCATE EXISTING THERMOSTAT TO LOCATION SHOWN. PROVIDE ADDITIONAL CONTROL WIRING AS NECESSARY.
 - ACCESS PANEL. SEE ARCHITECTURAL SHEETS FOR MORE INFORMATION. COORDINATE LOCATION WITH EQUIPMENT AND FILTER ACCESS REQUIREMENTS. COORDINATE TYPE AND COLOR WITH ARCHITECT.
 - CEILING DIFFUSER INSTALLED IN INACCESSIBLE CEILING SHALL HAVE CABLE OPERATED DAMPER FOR AIR BALANCING. PROVIDE CABLE OPERATED VOLUME DAMPER BY METROPOLITAN AIR TECHNOLOGIES MODEL RT-250 WITH EXTERNAL WORM GEAR OR YOUNG REGULATOR EQUIVALENT BUTTERFLY DAMPER WITH 275-275 CONTROLLER. DAMPER CABLE ACTUATOR SHALL BE ACCESSIBLE FOR BALANCING FROM THE PLENUM OF A SLOT DIFFUSER OR THE TOP OF A SQUARE OR ROUND FACE DIFFUSER AS APPLICABLE. INSTALL VOLUME DAMPER AT LOCATION INDICATED ON PLAN. CEILING CUP LOCATION SHALL BE COORDINATED WITH ARCHITECT.
 - MOUNT UNIT IN CEILING. SEE ARCHITECTURAL SHEETS FOR MORE INFORMATION.

HENDERSON ENGINEERS
8345 LENEKA DRIVE, SUITE 300
LENEXA, KS 66314
TEL: 913.742.5000 FAX: 913.742.5001
WWW.HENDERSONENGINEERS.COM
215001M1.0b
TX CORPORATE NUMBER: F-001236
08/02/21

Perry's
STEAKHOUSE & GRILLE®
RARE & WELL DONE®
2115 TOWN SQUARE PLACE
SUGAR LAND, TX 77479

FIELD VERIFICATION
Contractor shall verify all figured dimensions and conditions at the job site and notify Area Group Architects, Inc. of any dimensional errors, omissions or discrepancies before beginning or fabricating any work. Do not scale these drawings.
COPYRIGHT
Area Group Architects, Inc. shall retain all common law, statutory and other reserved rights. These drawings and related documents shall not be duplicated, disclosed or otherwise used without written consent of Area Group Architects, Inc.

No.	Date	Remarks
1	01/21/21	B5K-M1.0B
2	06/29/21	ISSUED FOR CONSTRUCTION
3	05/25/21	ISSUED FOR PERMITS
4	04/30/21	ISSUED FOR PRELIMINARY SUBMITTAL
5	03/06/21	ISSUED FOR RECORD SET

THIS DOCUMENT IS RELEASED FOR THE PURPOSE OF PRELIMINARY SUBMITTAL ONLY. M. MACY LICENSE # 132149
IT IS NOT TO BE USED FOR CONSTRUCTION PURPOSES.

Drawing Title	
MECHANICAL FLOOR PLAN SEGMENT B	
Job No.	Drawn
204628	SKK
Scale	Date
A5 NOTED	04/30/21
Sheet No.	
M1.0b	

ENTIRE SHEET REVISED

GRILLE, REGISTER AND DIFFUSER SCHEDULE							
MARK	MANUFACTURER	MODEL	FACE TYPE	MOUNTING LOCATION	FACE SIZE (IN)	MAX. DUCT DROP (IN. W.C.)	NOTES
LS0-1	TITUS	FLOWBAR FL-10-JT	LINEAR SLOT	CEILING	1" LINEAR SLOT	25	0.1
LS0-2	TITUS	FIBR-10	T-SLOT PLENUM	CEILING	2" (NOMINAL)	30	0.1
SD-1	TITUS	PAR-AA	PERFORATED	CEILING	24x24	30	0.1
SD-2	TITUS	PAR-AA	PERFORATED	CEILING	12x24	30	0.1
SD-3	TITUS	OMNI	PLAQUE	CEILING	24x24	30	0.1
RD-1	TITUS	PAR	PERFORATED	CEILING	24x24	30	0.1
RD-2	TITUS	PAR	PERFORATED	CEILING	24x48	30	0.1
RG-3	TITUS	PAR	PERFORATED	CEILING	12x24	30	0.1

MODEL NUMBERS SHALL NOT BE CONSIDERED COMPLETE AND MATERIAL SHALL NOT BE ORDERED BY MANUFACTURER AND MODEL NUMBERS ONLY REVIEW THE COMPLETE DESCRIPTION, NOTES AND SPECIFICATIONS TO DETERMINE THE EXACT MATERIAL AND ACCESSORIES TO BE ORDERED. THE MANUFACTURERS LISTED ARE THE BASIS FOR THE DESIGN.

NOTES:
 A. NECK SIZE SHOWN ON DRAWINGS.
 B. 4-WAY THROW PATTERN UNLESS OTHERWISE SHOWN ON DRAWINGS.
 C. BRANCH DUCT SIZE SHALL BE SAME AS NECK SIZE UNLESS OTHERWISE SHOWN ON DRAWINGS.
 D. BAKED ENAMEL FINISH, WHITE.
 E. ON 90 DEGREE CORNERS PROVIDE TITUS FBMC MITERED CORNER OR EQUAL TO PROVIDE A CONTINUOUS DIFFUSER AESTHETIC.
 F. PROVIDE NECK FOR DUCT CONNECTION.
 G. FRAME TYPE TO MATCH CEILING CONSTRUCTION, COORDINATE WITH ARCHITECTURAL REFLECTED CEILING PLAN.
 H. PROVIDE WITH NECK FLANGE FOR DUCT CONNECTION AND 1/4 TURN FASTENERS FOR REMOVAL AND CLEANING. FILTER NOT REQUIRED.
 I. PROVIDE WITHOUT DIRECTIONAL PATTERN CONTROLLERS.
 J. PROVIDE WITH TITUS "TRM" RAPID MOUNT FRAME TO CREATE LAY-IN APPLICATION WHEN INSTALLED IN A HARD CEILING.
 K. PROVIDE WITH MANUFACTURER'S INSULATED NARROW PLENUM FOR DUCT CONNECTION.
 L. PROVIDE FACTORY INSULATION BLANKET ON PLENUM SIDE OF SUPPLY AIR DEVICE. ATTACH TO AIR DEVICE IN APPROVED MANNER.
 M. PROVIDE BORDER TYPE 22 IN HARD CEILING/WALL APPLICATIONS. BORDER TYPE 14 FOR GYP TO VERTICAL FRAMING, AND BORDER TYPE 66 FOR LAY-IN AND LAY-IN TO VERTICAL FRAMING. COORDINATE WITH ARCHITECTURAL PLANS.
 N. PROVIDE LINEAR SLOT WITH CUSTOM FACTORY FINISH TO MATCH CEILING COLOR. REFER TO ARCHITECTURAL SHEETS FOR COLOR. PAINT ALL INTERIOR SURFACES OF PLENUMS FLAT BLACK.

WINE COOLER SCHEDULE														
MARK	MANUFACTURERS	SYSTEM	EVAPORATOR				CONDENSER				NOTES			
			MODEL	CFM	MCA	MOCPT	V/PH	WEIGHT	HP	MCA		MOCPT	V/PH	WEIGHT
WE-1A, WC-1A	WHISPERKCOOL	QUANTUM SS12000	SS12000	1000	3.2	15	115/1	133	1.25	12	20	208/1	115	A-F
WE-1B, WC-1B	WHISPERKCOOL	QUANTUM SS12000	SS12000	1000	3.2	15	115/1	133	1.25	12	20	208/1	115	A-F
WE-2A, WC-2A	WHISPERKCOOL	QUANTUM SS12000	SS12000	1000	3.2	15	115/1	133	1.25	12	20	208/1	115	A-F
WE-2B, WC-2B	WHISPERKCOOL	QUANTUM SS12000	SS12000	1000	3.2	15	115/1	133	1.25	12	20	208/1	115	A-F
WE-2C, WC-2C	WHISPERKCOOL	QUANTUM SS12000	SS12000	1000	3.2	15	115/1	133	1.25	12	20	208/1	115	A-F
WE-3A, WC-3A	WHISPERKCOOL	PLATINUM SPLIT TWIN	TWIN 9000	-	1	15	115/1	60	0.75	9.3	15	208/1	95	A-E
WE-3B, WC-3B	WHISPERKCOOL	PLATINUM SPLIT TWIN	TWIN 9000	-	1	15	115/1	60	0.75	9.3	15	208/1	95	A-E

MODEL NUMBERS SHALL NOT BE CONSIDERED COMPLETE AND MATERIAL SHALL NOT BE ORDERED BY MANUFACTURER AND MODEL NUMBERS ONLY REVIEW THE COMPLETE DESCRIPTION, NOTES AND SPECIFICATIONS TO DETERMINE THE EXACT MATERIAL AND ACCESSORIES TO BE ORDERED. THE MANUFACTURERS LISTED ARE THE BASIS FOR THE DESIGN.

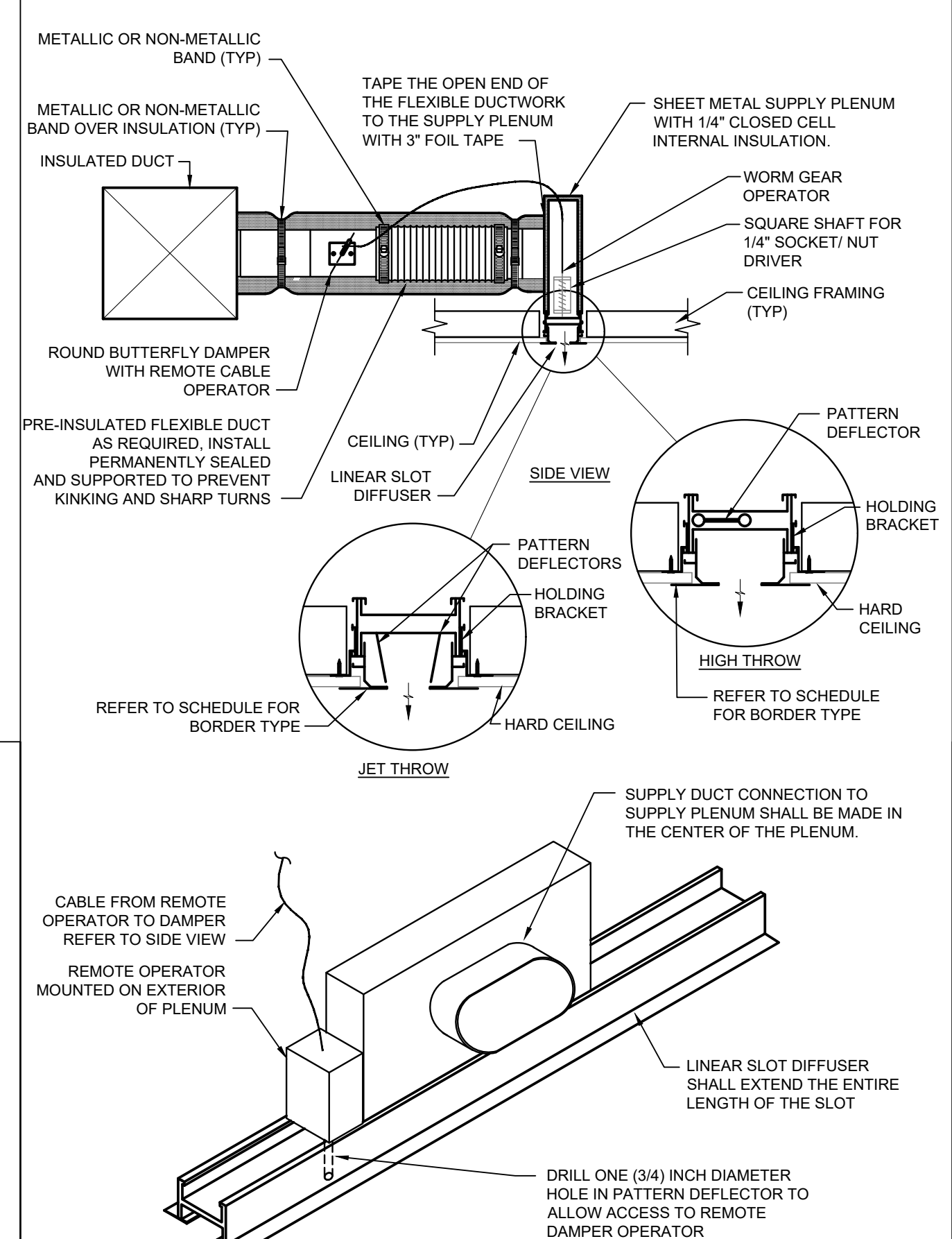
NOTES:
 A. CONTACT CINDI BENT, WHISPERKCOOL, 800-343-9483, CBENT@WHISPERKCOOL.COM
 B. MAINTAIN ALL REQUIRED CLEARANCES.
 C. PROVIDE WITH MANUFACTURER'S DIGITAL CONTROLLER, MOUNTING PLATE, AND REMOTE SENSOR. SET THERMOSTAT TO 62F.
 D. DIVISION 26 CONTRACTOR SHALL PROVIDE DISCONNECT SWITCHES.
 E. PROVIDE AUXILIARY DRAIN PAN WITH FLOOD DETECTOR TO SHUT OFF UNIT WHEN WATER IS PRESENT IN DRAIN PAN.

PROJECT DESIGN CONDITIONS									
CLIMATE CONDITIONS		Sugar Land Regional, TX, USA		BUILDING OPERATING HOURS:					
WEATHER STATION:		2		MONDAY - FRIDAY					
HEATING (DB):		99.6%		30.9 °F		SATURDAY			
DESIGN HEATING CONDITIONS (DB):		0.4%		97.4 °F		SUNDAY			
COOLING (DB/MC/DB):		97.4 °F		76.4 °F					
DESIGN COOLING CONDITIONS (DB/MC/DB):		97.4 °F		76.4 °F					
DEHUMIDIFICATION (DB/HR/MC/DB):		0.4%		78.7 °F		82.9 °F			

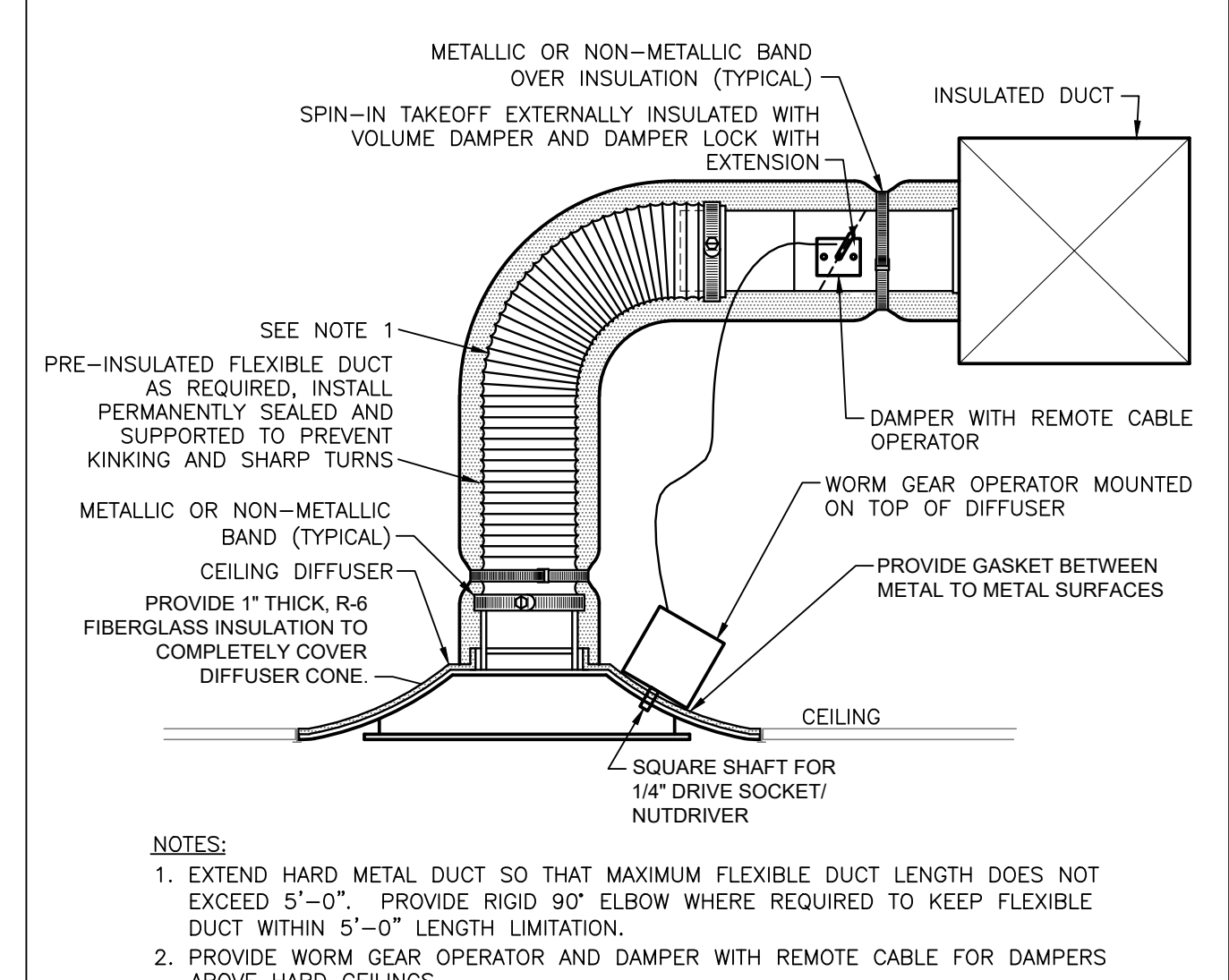
SPACE / UNIT DESCRIPTION	SET POINTS				SPACE OPERATING HOURS				NOTES	
	OCC °F	UNOCC °F	MAX RH %	MIN RH %	OCC °F	UNOCC °F	M-F	SAT		SUN
MAIN DINING	72	80	50%	NA	68	55	TBD	TBD	TBD	A-C
BAR DINING	70	80	50%	NA	68	55	TBD	TBD	TBD	A-C

NOTES:
 A. ZONE LEVEL SET POINT CONDITIONS SHALL BE AS SCHEDULED.
 B. ZONE LEVEL OCCUPANCY HOUR SCHEDULE SHALL BE PER BUILDING OPERATING HOURS UNLESS OTHERWISE SCHEDULED.
 C. ZONE LEVEL CONTROLS SHALL BE CAPABLE OF OPERATING WITH INDEPENDENT OCCUPANCY SCHEDULES.

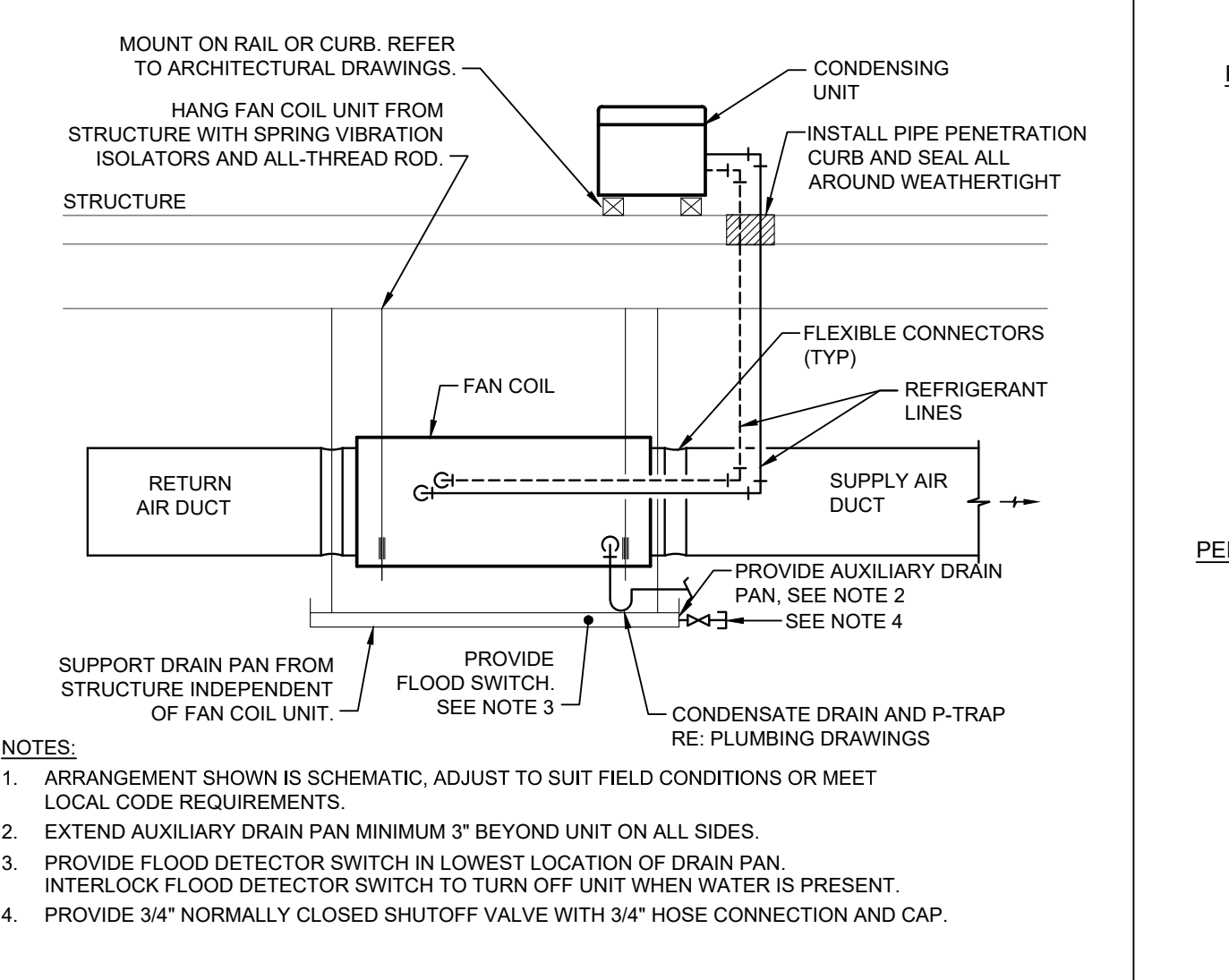
NOTE TO PROCESSORS:
RTU'S ARE ETR (EXISTING TO REMAIN) AND ARE NOT SHOWN ON SCHEDULE.
THE GREYED OUT AREA ON THE FLOOR PLAN I BELIEVE IS THE KITCHEN AND IS APART OF OUR SCOPE BUT THE RTU'S ARE NOT SHOWN. LOOKING AT THE SATELLITE VIEW THERE IS I THINK AT LEAST 1 RTU NOT SHOWN. NO IDEA HOW MANY HOODS THERE ARE. WESLEY WILL HAVE TO EVALUATE IN THE FIELD AND LET YOU KNOW WHAT HE NEEDS BUILT.



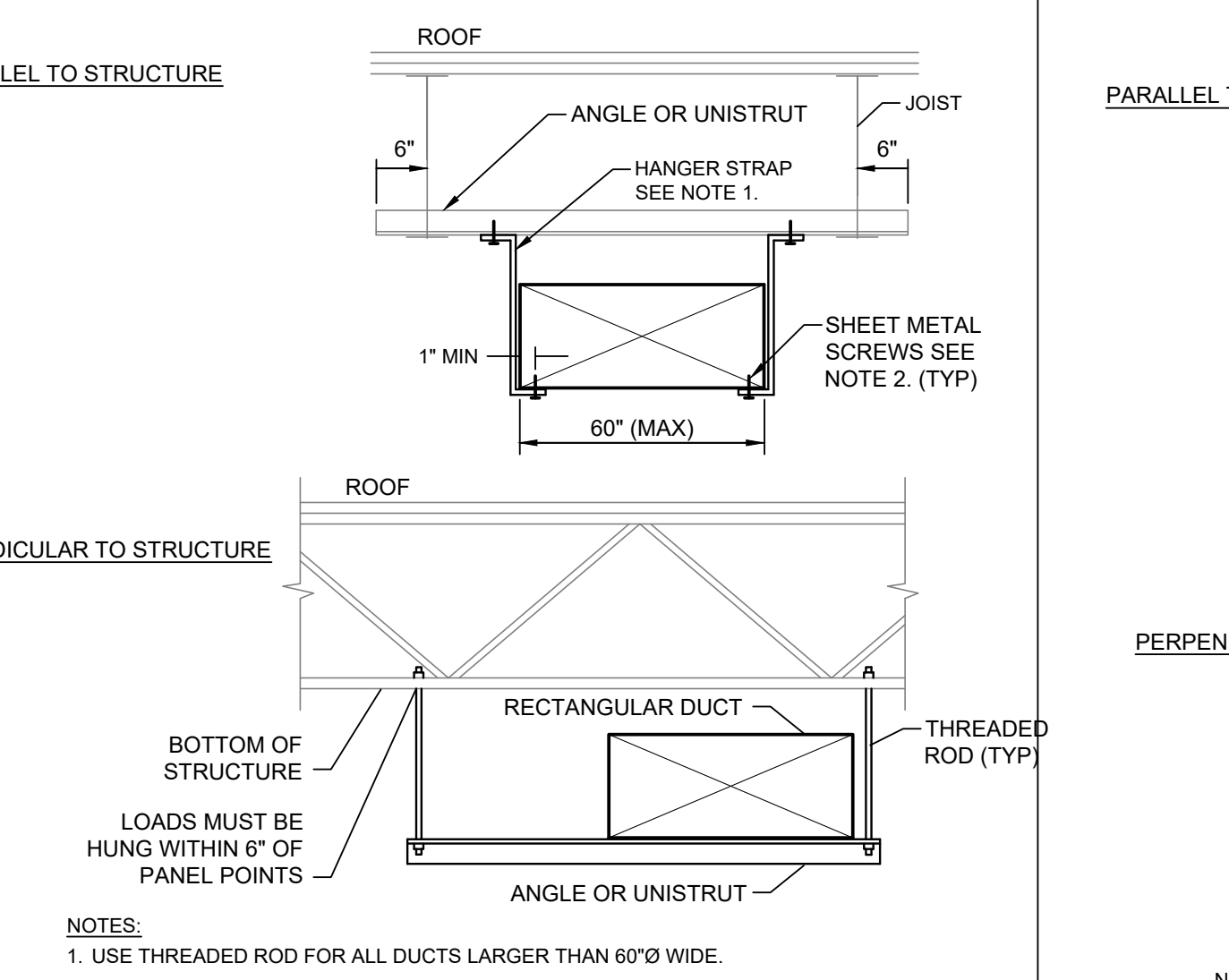
- NOTES:
 1. EXTEND HARD METAL DUCT SO THAT MAXIMUM FLEXIBLE DUCT LENGTH DOES NOT EXCEED 5'-0". PROVIDE RIGID 90° ELBOW WHERE REQUIRED TO KEEP FLEXIBLE DUCT WITHIN 5'-0" LENGTH LIMITATION.
 2. COORDINATE EXACT LENGTH AND LOCATION OF SLOT DIFFUSER WITH ARCHITECT'S REFLECTED CEILING PLAN.
 3. PORTIONS OF THE SLOT DIFFUSER NOT USED FOR SUPPLY SHALL REMAIN OPEN TO THE PLENUM FOR RETURN UNLESS NOTED OTHERWISE.
 4. ALL FLEXIBLE DUCT OFFSETS SHALL MAINTAIN A RADIUS OF 1.5 TIMES THE DIAMETER.
 5. AT THE CONTRACTOR'S OPTION SUPPLY PLENUM MAY BE FIELD FABRICATED AS SHOWN IN ASSOCIATED DETAIL OR PURCHASED FROM DIFFUSER SUPPLIER.
 6. REFER TO DIFFUSER MANUFACTURER'S INSTALLATION INSTRUCTIONS FOR EACH SCHEDULED BORDER TYPE.



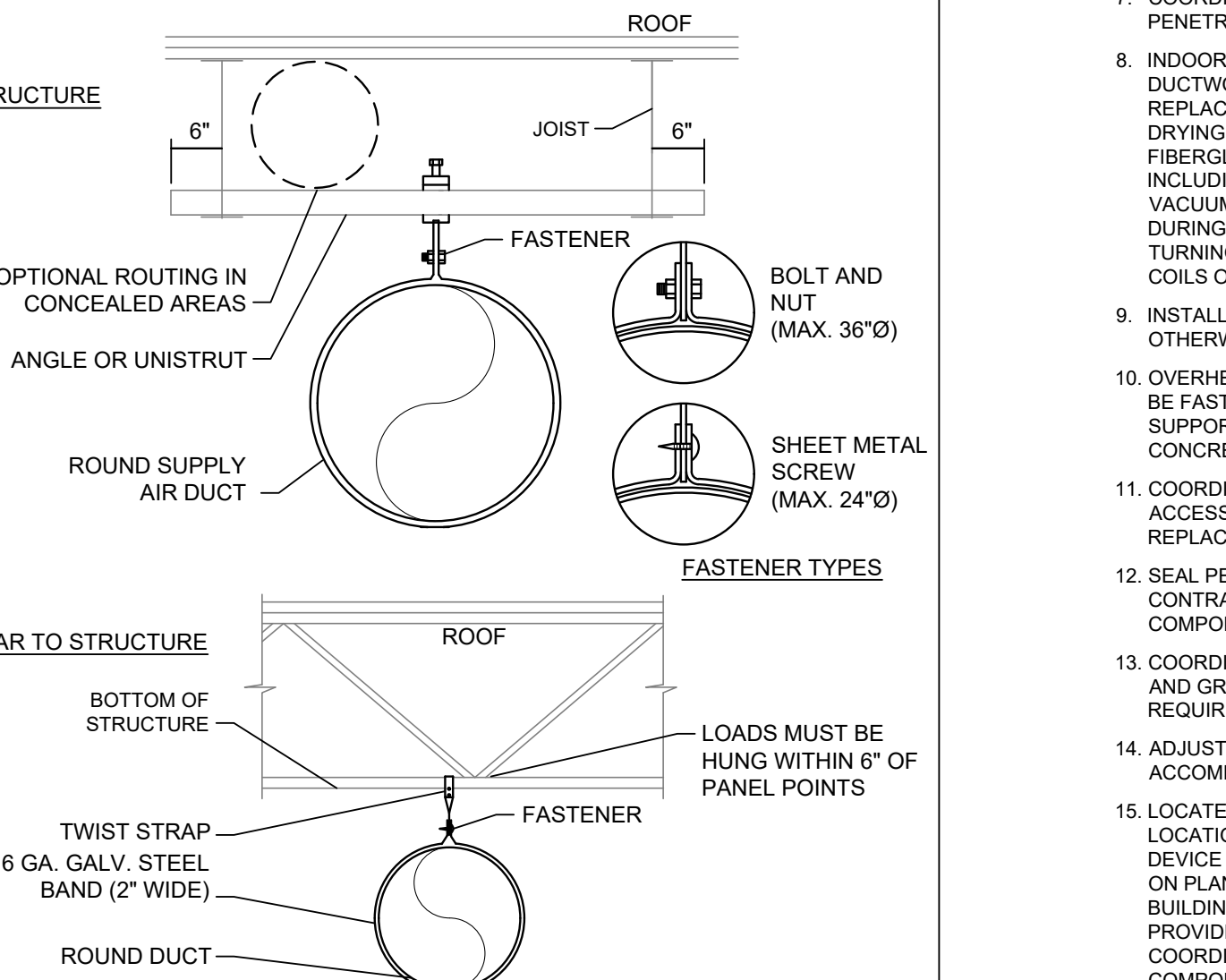
4 HARD CEILING DIFFUSER DETAIL NO SCALE



3 HORIZONTAL DX FAN COIL UNIT DETAIL WITH CONDENSING UNIT ON ROOF NO SCALE



2 RECTANGULAR DUCT SUPPORT DETAIL NO SCALE



1 ROUND DUCT SUPPORT DETAIL NO SCALE

MECHANICAL SYMBOLS	
HVAC EQUIPMENT & DUCTWORK	
NOTE: ALL DUCT DIMENSIONS SHOWN ON DRAWINGS ARE INSIDE DIMENSIONS. SEE SPECIFICATION FOR DUCTWORK TO RECEIVE INSULATION OR LINER.	
	LINEAR SLOT DIFFUSER WITH INDICATED THROW. ARROWS INDICATE DIRECTION OF THROW. MULTIPLE ARROWS INDICATE MULTIPLE DIRECTIONS OF THROW. PARALLEL WITH SLOT DIFFUSER INDICATES A VERTICAL THROW.
	INSULATED FLEXIBLE DUCT (MAX. 5'-0" LONG)
	BRANCH DUCT WITH 45° RECTANGLE ROUND BRANCH FITTING AND MANUAL VOLUME DAMPER
	BRANCH DUCT WITH CONICAL SPIN-IN ROUND BRANCH FITTING AND MANUAL VOLUME DAMPER
	ELBOW WITH TURNING VANES
	RETURN, EXHAUST, OR OUTSIDE AIR DUCT UP
	RETURN, EXHAUST, OR OUTSIDE AIR DUCT DOWN
	SUPPLY AIR DUCT UP
	SUPPLY AIR DUCT DOWN
	EQUIPMENT WITH FLEXIBLE DUCT CONNECTION
	10" CSD-1 300 CFM NECK SIZE, TYPE, CFM OF SUPPLY DIFFUSER OR REGISTER 24x24 CEG-1 800 CFM SIZE, TYPE, CFM OF EXHAUST GRILLE
	MANUAL VOLUME DAMPER
	SQUARE TO ROUND TRANSITION
	DUCT MOUNTED SMOKE DETECTOR (SD=SUPPLY/RD=RETURN)
	RISE R DESIGNATION
	FIRE DAMPER
	FIRE SMOKE DAMPER
	SMOKE DAMPER
	VOLUME DAMPER
	MOTORIZED DAMPER
	BACKDRAFT DAMPER
	HUMIDISTAT
	COMBINATION TEMPERATURE AND HUMIDITY THERMOSTAT
	CONDENSER WATER SUPPLY (CWS)
	CONDENSER WATER RETURN (CWR)
	REFRIGERANT LIQUID (RL)
	REFRIGERANT DISCHARGE (HOT GAS) (RD)
	REFRIGERANT SUCTION (RS)
	CARBON MONOXIDE SENSOR
	CARBON DIOXIDE SENSOR
	DIFFERENTIAL PRESSURE SENSOR
	FLOW SWITCH
	HUMIDITY SENSOR
	FULL STATION
	STATIC PRESSURE PORT
	TEMPERATURE SENSOR
	COMBINATION TEMPERATURE AND HUMIDITY SENSOR
STANDARD MOUNTING HEIGHTS	
MECHANICAL THERMOSTATS (USER ADJUSTABLE/TOP OF DEVICE) (AFF. UNLESS NOTED OTHERWISE)	
CONTROLS (TOP OF DEVICE) 48"	
ANNOTATION	
	MECHANICAL OR FIRE PROTECTION PLAN CALLOUT
	MECHANICAL EQUIPMENT DESIGNATION (CONTRACTOR FURNISHED AND INSTALLED UNLESS NOTED OTHERWISE)
	CONNECTION POINT OF NEW WORK TO EXISTING
	DETAIL REFERENCE UPPER NUMBER INDICATES DETAIL NUMBER LOWER NUMBER INDICATES SHEET NUMBER
ABBREVIATION	
AFF	ABOVE FINISHED FLOOR
AHJ	AUTHORITY HAVING JURISDICTION
ETR	EXISTING TO REMAIN
FSEC	FOOD SERVICE EQUIPMENT CONTRACTOR
TYP	TYPICAL

GENERAL NEW NOTES:

- PRIOR TO SUBMITTING BID, VISIT THE JOB SITE AND BECOME FULLY ACQUAINTED WITH THE EXISTING CONDITIONS OF THE PROJECT. REVIEW THE GENERAL NOTES, SPECIFICATIONS AND OTHER DRAWINGS FOR ADDITIONAL REQUIREMENTS WHICH MAY NOT BE SPECIFICALLY CALLED OUT IN THIS PORTION OF THE CONSTRUCTION DOCUMENTS. NOTIFY ARCHITECT, ENGINEER AND/OR OWNER OF CONFLICTS OR DISCREPANCIES PRIOR TO SUBMISSION OF BID.
- EXISTING CONDITIONS WERE TAKEN FROM ORIGINAL DRAWINGS AND SITE VISITS AND MAY NOT REFLECT EXACT AS-BUILT CONDITIONS. FIELD VERIFY EXISTING CONDITIONS PRIOR TO SUBMITTING FINAL BIDS. COORDINATE NEW WORK AND DEMOLITION WITH OTHER DISCIPLINES AND EXISTING CONDITIONS PRIOR TO CONSTRUCTION.
- COORDINATE THE INSTALLATION OF THE MECHANICAL SYSTEMS WITH OTHER TRADES TO ENSURE A NEAT AND ORDERLY INSTALLATION. INSTALL ALL DUCTWORK AND PIPING AS TIGHT TO STRUCTURE AS POSSIBLE. COORDINATE WITH OTHER TRADES TO AVOID CONFLICTS. COORDINATE INSTALLATION OF DUCTWORK AND PIPING TO AVOID CONFLICTS WITH ELECTRICAL PANELS, LIGHTING FIXTURES, ETC. ANY MODIFICATIONS REQUIRED DUE TO LACK OF COORDINATION WILL BE THE RESPONSIBILITY OF THE CONTRACTOR AT NO EXTRA COST TO THE OWNER.
- DURING INSTALLATION OF NEW WORK, AVOID DAMAGING EXISTING SURFACES AND EQUIPMENT TO REMAIN. REPAIR DAMAGE CAUSED DURING CONSTRUCTION AT NO EXTRA COST TO THE OWNER.
- NEW MECHANICAL EQUIPMENT, DUCTWORK AND PIPING ARE SHOWN AT APPROXIMATE LOCATIONS. FIELD MEASURE FINAL DUCTWORK AND PIPING LOCATIONS PRIOR TO FABRICATION AND MAKE ADJUSTMENTS AS REQUIRED TO FIT THE DUCTWORK AND PIPING WITHIN THE AVAILABLE SPACE. VERIFY THAT FINAL EQUIPMENT LOCATIONS MEET MANUFACTURER'S RECOMMENDATIONS REGARDING SERVICE CLEARANCE AND PROPER AIRFLOW CLEARANCE AROUND EQUIPMENT.
- REFER TO ARCHITECTURAL DRAWINGS FOR RELATED CONSTRUCTION DETAILS AS APPLICABLE TO THE HVAC SYSTEM. VERIFY CHASIS AND PENETRATIONS SHOWN ON ARCHITECTURAL DRAWINGS THAT ARE INTENDED FOR DUCTWORK AND PIPING MEET REQUIREMENTS.
- COORDINATE LOCATION OF ROOF MOUNTED HVAC EQUIPMENT AND ROOF PENETRATIONS WITH THE ARCHITECTURAL AND STRUCTURAL DRAWINGS.
- INDOOR AIR QUALITY MEASURES: PROTECT INSIDE OF INSTALLED (AND DELIVERED) DUCTWORK AND HVAC UNITS FROM EXPOSURE TO DUST, DIRT, PAINT AND MOISTURE. REFUSE INSULATION THAT HAS BECOME WET AT ANY TIME DURING CONSTRUCTION. DRYING THE INSULATION IS NOT ACCEPTABLE. SEAL ANY TEARS OR JOINTS OF INTERNAL FIBERGLASS INSULATION. REMOVE BERMS FROM CEILING/RETURN AIR PLENUM INCLUDING DUST. AN INDEPENDENT, PROFESSIONAL DUCT CLEANING COMPANY SHALL VACUUM CLEAN ANY DUCTWORK CONNECTED TO HVAC UNITS THAT WERE OPERATED DURING THE CONSTRUCTION PERIOD AFTER NEW FILTERS ARE INSTALLED AND PRIOR TO TURNING SYSTEM OVER TO THE OWNER. THE INTERNAL SURFACES AND ASSOCIATED COILS OF ANY HVAC UNITS THAT WERE OPERATED SHALL ALSO BE CLEANED.
- INSTALL DUCTWORK AND PIPING PARALLEL TO BUILDING COLUMN LINES UNLESS OTHERWISE SHOWN OR NOTED.
- OVERHEAD HANGERS AND SUPPORTS FOR EQUIPMENT, DUCTWORK AND PIPING SHALL BE FASTENED TO BUILDING JOISTS OR BEAMS. DO NOT ATTACH HANGERS AND SUPPORTS TO THE ABOVE FLOOR SLAB OR ROOF EXCEPT WHERE CONCRETE INSETS IN CONCRETE SLABS ARE ALLOWED BY THE SPECIFICATIONS.
- COORDINATE LOCATION OF EQUIPMENT SUPPORTS WITH LOCATION OF EQUIPMENT ACCESS PANELS/DOORS TO ENABLE SERVICE OF EQUIPMENT AND/OR FILTER REPLACEMENT.
- SEAL PENETRATIONS THROUGH THE BUILDING COMPONENTS IN ACCORDANCE WITH THE CONTRACT SPECIFICATIONS. FIREPROOF PENETRATIONS THROUGH FIRE RATED COMPONENTS IN ACCORDANCE WITH U.L. REQUIREMENTS.
- COORDINATE THE EXACT MOUNTING SIZE AND FRAME TYPE OF DIFFUSERS, REGISTERS AND GRILLES WITH THE SUPPLIER TO MEET THE CEILING, WALL AND DUCT INSTALLATION REQUIREMENTS.
- ADJUST LOCATION OF CEILING DIFFUSERS, REGISTERS AND GRILLES AS REQUIRED TO ACCOMMODATE FINAL CEILING GRID AND LIGHTING LOCATIONS.
- LOCATE AND SET THERMOSTATS AT LOCATIONS SHOWN ON PLANS. VERIFY EXACT LOCATIONS WITH ARCHITECT PRIOR TO INSTALLATION. INSTALL DEVICES WITH TOP OF DEVICE AT MAXIMUM HEIGHT PER REQUIREMENTS UNLESS NOTED OTHERWISE ON PLANS. PROVIDE INSULATED BACKINGS FOR THERMOSTATS MOUNTED ON EXTERIOR BUILDING WALLS. INSTALL WIRING IN CONDUIT PROVIDED BY DIVISION 26. AT A MINIMUM, PROVIDE CONDUIT IN THE WALL FROM THE JUNCTION BOX TO 6" ABOVE THE CEILING. COORDINATE THE LOCATION AND ELEVATION OF WALL-MOUNTED DEVICES WITH COMPONENTS SHOWN ON THE ARCHITECTURAL DRAWINGS THAT ARE TO BE INSTALLED UNDER OTHER DIVISIONS. CONTRACTOR WILL NOT BE REIMBURSED FOR RELOCATION OF WALL-MOUNTED DEVICES CAUSED BY A LACK OF COORDINATION.
- PROVIDE A MANUAL BALANCING DAMPER IN EACH DUCT TAKEOFF FROM SUPPLY, RETURN, OUTDOOR, OR EXHAUST AIR DUCTS.
- BRANCH DUCTWORK OR AIR OUTLETS SHALL BE SAME SIZE AS OUTLET NECK SIZE UNLESS OTHERWISE NOTED.
- FLEXIBLE DUCTWORK SHALL NOT EXCEED 5'-0" IN LENGTH AND SHALL BE INSTALLED AND SUPPORTED TO AVOID SHARP BENDS AND SAGGING. REFER TO SPECIFICATIONS FOR ADDITIONAL REQUIREMENTS.
- PROVIDE A NEW SET OF AIR FILTERS IN UNITS PRIOR TO TESTING, ADJUSTING AND BALANCING AND BEFORE TURNING SYSTEMS OVER TO OWNER.

No	Date	REVISIONS
01/21/21	B6K-172-0	
06/28/21		
05/25/21		
04/30/21		
03/26/21		

THIS DOCUMENT IS RELEASED FOR THE PURPOSE OF PRELIMINARY SUBMITTAL ONLY. MCMC LICENSE # 132149

IT IS NOT TO BE USED FOR CONSTRUCTION PURPOSES.

Drawing Title: **MECHANICAL DETAILS AND SCHEDULES**

Job No. 204628 Drawn 5K

Scale A5 NOTED Date 04/30/21

Sheet No. **M2.0**

HENDERSON ENGINEERS
 8345 LENEKA DRIVE, SUITE 300
 LENEXA, KS 66214
 TEL: 913.550.5000 FAX: 913.742.5001
 WWW.HENDERSONENGINEERS.COM

215 TOWN SQUARE PLACE
 SUGAR LAND, TX 77479

Abert's STEAKHOUSE & GRILLE
 BAKE & WELL DONE®