

Unit Report For RTU 1

Project: Nike 76 North Bend WA
 Prepared By: Dan Dillman

02/11/2025
 05:09PM

Unit Parameters

Unit Model:.....**48FEDM08A2M5-3W4D0**
 Unit Size:.....**08 (7.5 Tons)**
 Volts-Phase-Hertz:.....**230-3-60**
 Heating Type:.....**Gas**
 Refrigerant:.....**R-454B**
 Heat Control:.....**Low Gas Heat**
 Duct Cfg:.....**Vertical Supply / Vertical Return**
 DX Options:.....**Single Circuit, Two Stage Cooling**

Dimensions (ft. in.) & Weight (lb.) ***

Unit Length:.....**7' 4.125"**
 Unit Width:.....**4' 11.5"**
 Unit Height:.....**3' 5.25"**
Total Operating Weight:.....948 lb

*** Weights and Dimensions are approximate. Weight does not include unit packaging. Approximate dimensions are provided primarily for shipping purposes. For exact dimensions and weights, refer to appropriate product data catalog.

Lines and Filters

Gas Line Size:.....**1/2**
 Condensate Drain Line Size:.....**3/4**
 Return Air Filter Type:.....**Throwaway**
 Return Air Filter Quantity:.....**4**
 Return Air Filter Size:.....**16 x 20 x 2**

Selection includes construction throwaway filter into the base fan curve.

Unit Configuration

Standard/Medium Static - EcoBlue Vane Axial Fan
 Al/Cu - Al/Cu - Louvered Hail Guards
 SystemVu Controller
 ULL Enthalpy Economizer with Barometric Relief
 Hinged Panels and Unpowered Convenience Outlet
 Thru-The-Base Connections
 Standard Packaging

Warranty Information

1-Year parts(std.)
 5-Year compressor parts(std.)
 10-Year heat exchanger - Aluminized(std.)
 3-Year SystemVu
COMPLETE UNIT YEAR 2-5 PARTS ONLY

NOTE: Please see Warranty Catalog 500-089 for explanation of policies and ordering methods.

Ordering Information

Part Number	Description	Quantity
48FEDM08A2M5-3W4D0	Rooftop Unit	1
Field Installed Accessories		
CRHUMDSN001B00	Outdoor or Return Air RH Sensor	1
CRLAMBKT002A00	Low Ambient Solid-State Variable Speed Motor Controller	1
HC40GE233	Motormaster I Compatible Condenser Fan Motor	2
CRPWREXH022A01	Power Exhaust System	1
CRPECONV004A00	Hinged Panel Sealing Angle Kit	1

Certified Drawing for RTU 1

Project: Nike 76 North Bend WA
Prepared By: Dan Dillman

02/11/2025
05:09PM

NOTES:

1. DIMENSIONS ARE IN INCHES. DIMENSIONS IN [] ARE IN MILLIMETERS.

2. CENTER OF GRAVITY

3. DIRECTION OF AIR FLOW

4. ALL VIEW DRAWN USING 3RD ANGLE

UNIT	OUTDOOR COIL TYPE	J	K	H
48FE-M08	RTPF	41 1/4 [1040]	33 3/4 [857]	15 7/8 [403]
48FE-M09	RTPF	49 3/8 [1253]	36 3/8 [925]	15 7/8 [403]
48FE-M12	RTPF	49 3/8 [1253]	36 3/8 [925]	15 7/8 [403]

RTPF - ROUND TUBE, PLATE FIN (COPPER/ALUM)



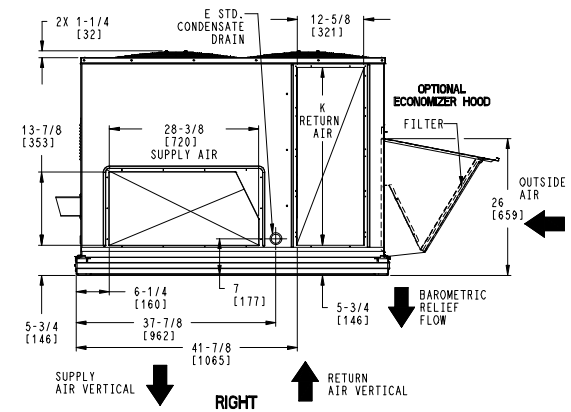
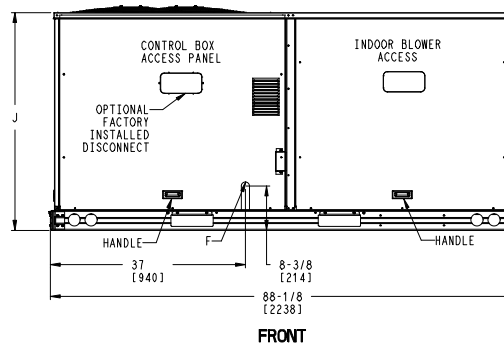
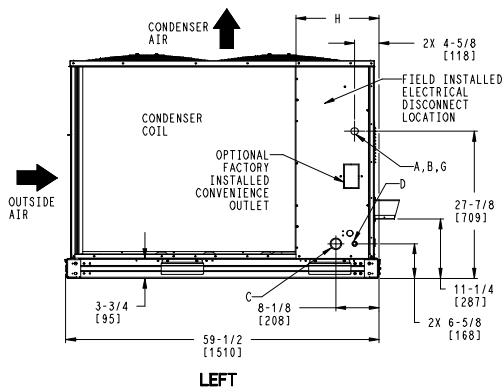
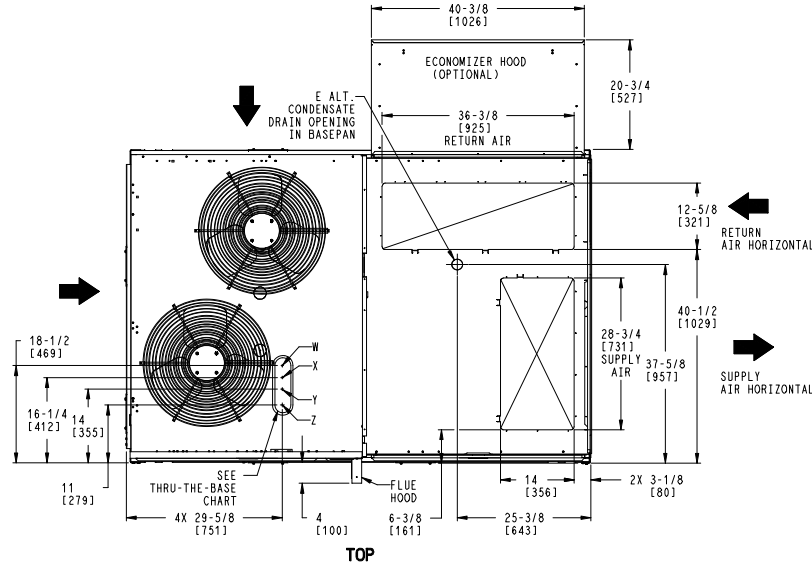
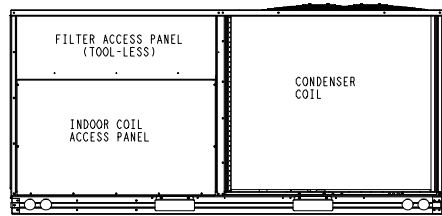
THIS DOCUMENT IS THE PROPERTY OF CARRIER CORPORATION AND IS DELIVERED UPON THE EXPRESS CONDITION THAT THE CONTENTS WILL NOT BE DISCLOSED OR USED WITHOUT CARRIER CORPORATION'S WRITTEN CONSENT.

SUBMISSION OF THESE DRAWINGS OR DOCUMENTS DOES NOT CONSTITUTE PART PERFORMANCE OR ACCEPTANCE OF CONTRACT.

CONNECTION SIZES	
A	1 3/8" [35] DIA FIELD POWER SUPPLY HOLE
B	2 1/2" [64] DIA POWER SUPPLY KNOCKOUT
C	1 3/4" [51] DIA GAUGE ACCESS PLUG
D	7/8" [22] DIA FIELD CONTROL WIRING HOLE
E	3/4"-14 NPT CONDENSATE DRAIN
F	1/2"-14 NPT GAS CONNECTION
G	3/4"-14 NPT GAS CONNECTION
	2" [51] DIA POWER SUPPLY KNOCK-OUT

THRU-THE-BASE CHART (FIELD INST)			
THESE HOLES REQUIRED FOR USE WITH ACCY KITS: CRBTMPR002A01: GAS THRU CURB CRBTMPR004A01: GAS THRU BASEPAN			
THREADED CONDUIT SIZE	WIRE USE	REQ'D HOLE SIZES (MAX.)	
W	1/2"	ACC.	7/8" [22.2]
X	1/2"	24V	7/8" [22.2]
Y	1 1/4" (002,004)	POWER	1 3/4" [44.4]
Z *	(004) 3/4" FPT	GAS	1 3/4" [44.4]
* (002) PROVIDES 3/4" FPT THRU CURB FLANGE & FITTING. HOLE SIZE: 2" [50.8]			

THRU-THE-BASE CHART (FIOP)	
FOR "THRU-THE-BASEPAN" FACTORY OPTION, FITTINGS FOR ONLY X, Y, & Z ARE PROVIDED. **	
** FOR BELOW LISTED MODELS, A FIELD SUPPLIED 1/2" ADAPTER IS REQUIRED BETWEEN BASE PAN FITTING AND GAS VALVE: 48FC0, S408, 09	



ITC CLASSIFICATION	SHEET	DATE	SUPERCEDES	48FE 08-12 SINGLE ZONE ELECTRICAL COOLING WITH GAS HEAT	48TM009320	REV
U.S. ECCN:NSR	1 OF 3	8/8/23	-			-

Certified Drawing for RTU 1

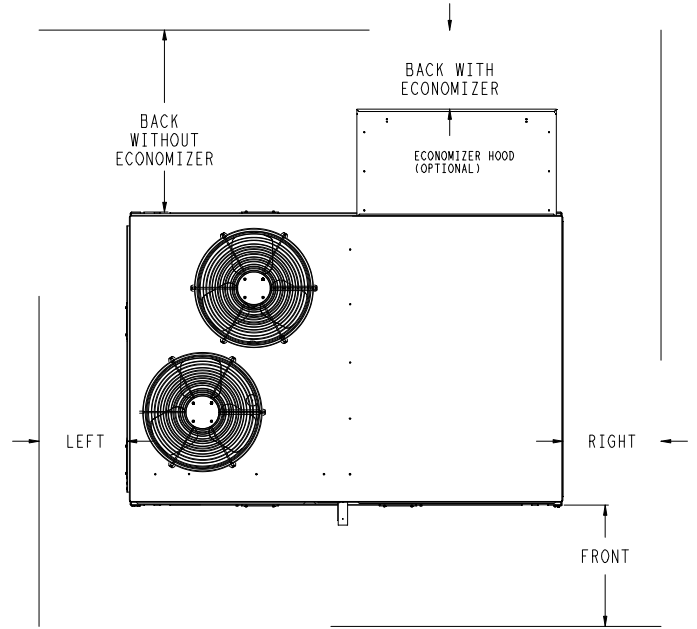
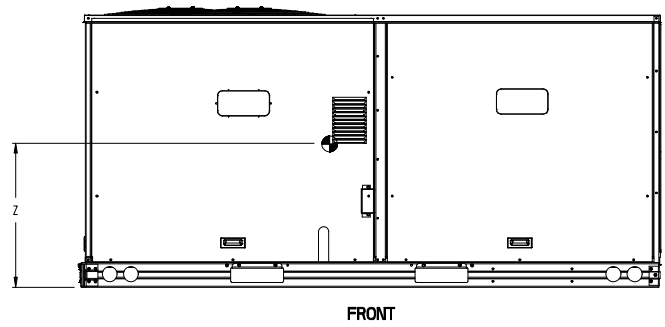
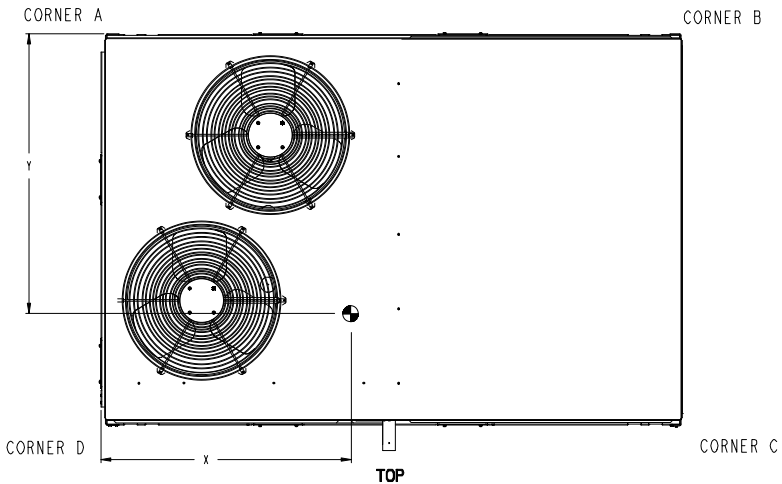
Project: Nike 76 North Bend WA
Prepared By: Dan Dillman

02/11/2025
05:09PM

UNIT	OUTDOOR COIL TYPE	STD. UNIT WEIGHT ***		CORNER WEIGHT (A)		CORNER WEIGHT (B)		CORNER WEIGHT (C)		CORNER WEIGHT (D)		C.G.			
		LBS.	KG.	LBS.	KG.	LBS.	KG.	LBS.	KG.	LBS.	KG.	X	Y	Z	
48FE-M08	RTPF	787	357	181	82	150	68	207	94	249	113	40	1/2 [1016]	34 1/2 [876]	19 3/8 [492]
48FE-M09	RTPF	868	394	197	89	160	73	229	104	282	128	39 1/2 [1003]	35 [889]	18 5/8 [473]	
48FE-M12	RTPF	878	398	213	97	175	80	221	100	268	121	39 7/8 [1013]	33 1/4 [841]	18 1/2 [470]	

RTPF - ROUND TUBE, PLATE FIN [COPPER/ALUM]

*** STANDARD UNIT WEIGHT IS WITH LOW GAS HEAT AND WITHOUT PACKAGING. FOR OTHER OPTIONS AND ACCESSORIES, REFER TO THE PRODUCT DATA CATALOG.



NOTE:
1. FOR ALL MINIMUM CLEARANCES LOCAL CODES OR JURISDICTIONS MAY PREVAIL.

SURFACE	CLEARANCE		OPERATING CLEARANCE
	SERVICE WITH CONDUCTIVE BARRIER	SERVICE WITH NONCONDUCTIVE BARRIER	
FRONT	48 [1219mm]	36 [914mm]	18 [457mm]
LEFT	48 [1219mm]	42 [1067mm]	18 [457mm]
BACK W/O ECON	48 [1219mm]	42 [1067mm]	18 [457mm]
BACK W/ECON	36 [914mm]	36 [914mm]	18 [457mm]
RIGHT	36 [914mm]	36 [914mm]	18 [457mm]
TOP	72 [1829mm]	72 [1829mm]	72 [1829mm]

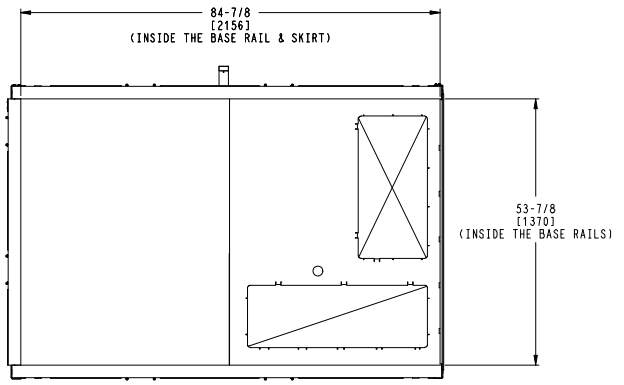
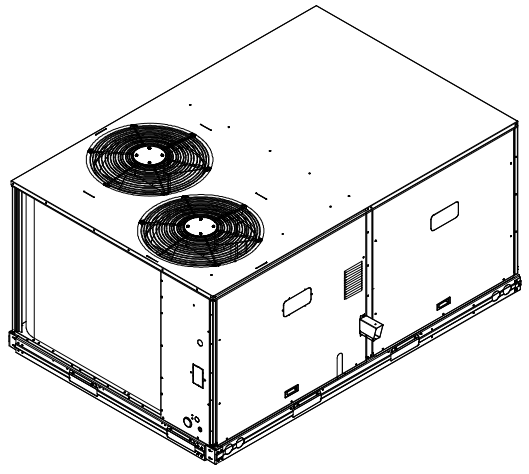
ITC CLASSIFICATION U.S. ECCN: NSR	SHEET 2 OF 3	DATE 8/8/23	SUPERCEDES -	48FE 08-12 SINGLE ZONE ELECTRICAL COOLING WITH GAS HEAT	48TM009320	REV -
--------------------------------------	-----------------	----------------	-----------------	---	------------	----------

Certified Drawing for RTU 1

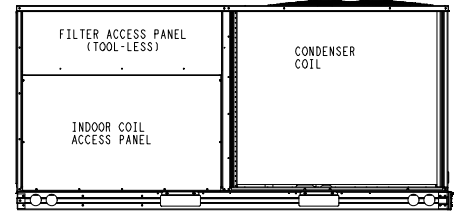
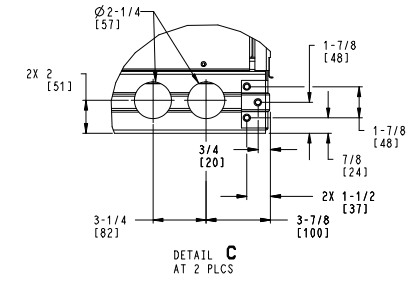
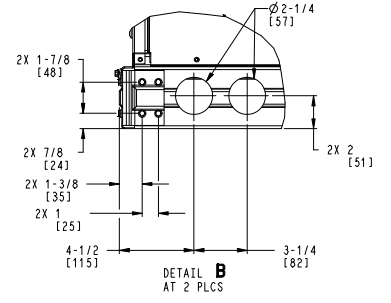
Project: Nike 76 North Bend WA
 Prepared By: Dan Dillman

02/11/2025
 05:09PM

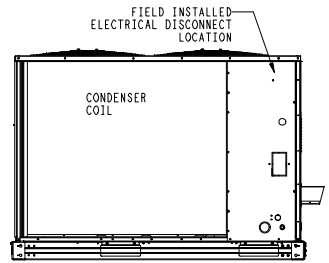
Carrier THIS DOCUMENT IS THE PROPERTY OF CARRIER CORPORATION AND IS DELIVERED UPON THE EXPRESS CONDITION THAT THE CONTENTS WILL NOT BE DISCLOSED OR USED WITHOUT CARRIER CORPORATION'S WRITTEN CONSENT. SUBMISSION OF THESE DRAWINGS OR DOCUMENTS DOES NOT CONSTITUTE PART PERFORMANCE OR ACCEPTANCE OF CONTRACT.



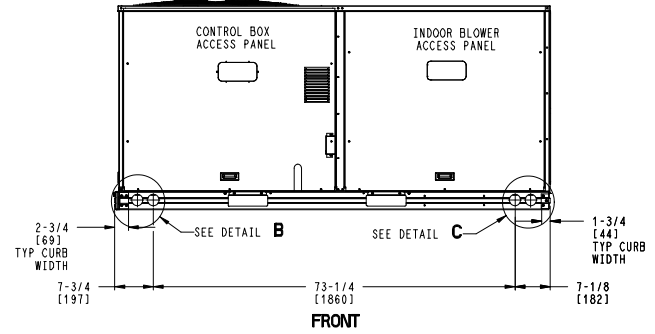
INSIDE BASERAIL DIMENSIONS
BOTTOM



BACK



LEFT



FRONT

ITC CLASSIFICATION	SHEET	DATE	SUPERCEDES	48FE 08-12 SINGLE ZONE ELECTRICAL COOLING WITH GAS HEAT	48TM009320	REV
U.S. ECCN: NSR	3 OF 3	8/8/23	-			-

Performance Summary For RTU 1

Project: Nike 76 North Bend WA
Prepared By: Dan Dillman

02/11/2025
05:09PM

Part Number:48FEDM08A2M5-3W4D0

Refrigerant:..... **R-454B**
ARI EER:..... **11.20**
IEER:..... **15.0**

Base Unit Dimensions

Unit Length:..... **88.1** in
Unit Width:..... **59.5** in
Unit Height:..... **41.3** in

Operating Weight

Base Unit Weight:..... **787** lb
Al/Cu - Al/Cu - Louvered Hail Guards:..... **17** lb
SystemVu Controller:..... **2** lb
ULL Enthalpy Economizer with Barometric Relief:..... **57** lb
Hinged Panels and Unpowered Convenience Outlet:..... **9** lb
Thru-The-Base Connections:..... **1** lb

Accessories

Power Exhaust System:..... **75** lb

Total Operating Weight:..... **948** lb

Unit

Unit Voltage-Phase-Hertz:..... **230-3-60**
Air Discharge:..... **Vertical**
Fan Drive Type:..... **Vane Axial**
Actual Airflow:..... **3000** CFM
Site Altitude:..... **322** ft

Cooling Performance

Condenser Entering Air DB:..... **95.0** F
Evaporator Entering Air DB:..... **81.5** F
Evaporator Entering Air WB:..... **64.4** F
Entering Air Enthalpy:..... **29.61** BTU/lb
Evaporator Leaving Air DB:..... **56.1** F
Evaporator Leaving Air WB:..... **54.4** F
Evaporator Leaving Air Enthalpy:..... **22.92** BTU/lb
Gross Cooling Capacity:..... **89.23** MBH
Gross Sensible Capacity:..... **81.42** MBH
Compressor Power Input:..... **6.18** kW
Coil Bypass Factor:..... **0.102**

Mixed Air

Outdoor Air Airflow:..... **500** CFM
Outdoor Air DB:..... **95.0** F
Outdoor Air WB:..... **65.0** F
Outdoor Air Htg. Temp.:..... **18.0** F
Return Air DB:..... **78.8** F
Return Air WB:..... **64.3** F
Return Air Htg. Temp.:..... **62.2** F

Heating Performance

Heating Airflow:..... **3000** CFM
Entering Air Temp:..... **54.8** F
Leaving Air Temp:..... **87.0** F
Gas Heating Input Capacity:..... **125.0** MBH
Gas Heating Output Capacity:..... **103.0** MBH
Temperature Rise:..... **32.2** F
Thermal Efficiency (%):..... **82.0**

Supply Fan

Performance Summary For RTU 1

Project: Nike 76 North Bend WA
 Prepared By: Dan Dillman

02/11/2025
 05:09PM

External Static Pressure:.....	1.20	in wg
Options / Accessories Static Pressure		
Economizer:.....	0.11	in wg
Power Exhaust:.....	(Fan Data Includes Drop)	
Application External Static (ESP + Unit Opts/Acc.):.....	1.31	in wg
Fan RPM:.....	1786	
Fan Power:.....	2.11	BHP
NOTE:.....	Selected IFM RPM Range: 1040 - 2000	

Selection includes construction throwaway filter into the base fan curve. This filter is not MERV Rated.

Power Exhaust

Return Duct Static:.....	0.40	in wg
Max. Air To Exhaust:.....	2817	CFM

Electrical Data

Voltage Range:.....	187 - 253
Compressor #1 RLA:.....	12.2
Compressor #1 LRA:.....	120
Compressor #2 RLA:.....	12.2
Compressor #2 LRA:.....	120
Indoor Fan Motor Type:.....	MED
Indoor Fan Motor FLA (Total):.....	6.4
Combustion Fan Motor FLA (ea):.....	0.48
Power Supply MCA:.....	41
Power Supply MOCP (Fuse or HACR):.....	50
Disconnect Size FLA:.....	43
Disconnect Size LRA:.....	261
Electrical Convenience Outlet:.....	None
Power Exhaust [Kit Qty / FLA(ea kit)]:.....	1 / 3.8
Outdoor Fan [Qty / FLA (ea)]:.....	2 / 1.5

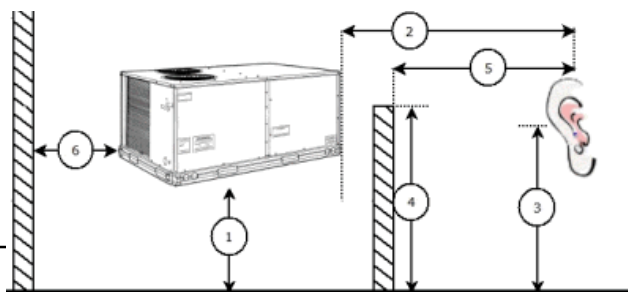
Control Panel SCCR: 5kA RMS at Rated Symmetrical Voltage

Acoustics

Sound Power Levels, db re 10E-12 Watts

	Discharge	Inlet	Outdoor
63 Hz	90.7	85.3	85.6
125 Hz	87.1	82.0	84.7
250 Hz	80.4	74.0	80.5
500 Hz	77.0	69.8	76.0
1000 Hz	78.5	70.0	72.4
2000 Hz	75.3	64.5	68.0
4000 Hz	71.2	56.6	62.8
8000 Hz	62.0	49.9	59.3
A-Weighted	82.7	74.3	79.0

Advanced Acoustics



Performance Summary For RTU 1

Project: Nike 76 North Bend WA
 Prepared By: Dan Dillman

02/11/2025
 05:09PM

Advanced Acoustics Parameters

1. Unit height above ground:..... **30.0** ft
2. Horizontal distance from unit to receiver:..... **50.0** ft
3. Receiver height above ground:..... **5.7** ft
4. Height of obstruction:..... **0.0** ft
5. Horizontal distance from obstruction to receiver:..... **0.0** ft
6. Horizontal distance from unit to obstruction:..... **0.0** ft

Detailed Acoustics Information

Octave Band Center Freq. Hz	63	125	250	500	1k	2k	4k	8k	Overall
A	85.6	84.7	80.5	76.0	72.4	68.0	62.8	59.3	89.2 Lw
B	59.4	68.6	71.9	72.8	72.4	69.2	63.8	58.2	78.5 LwA
C	53.2	52.3	48.1	43.6	40.0	35.6	30.4	26.9	56.8 Lp
D	27.0	36.2	39.5	40.4	40.0	36.8	31.4	25.8	46.1 LpA

Legend

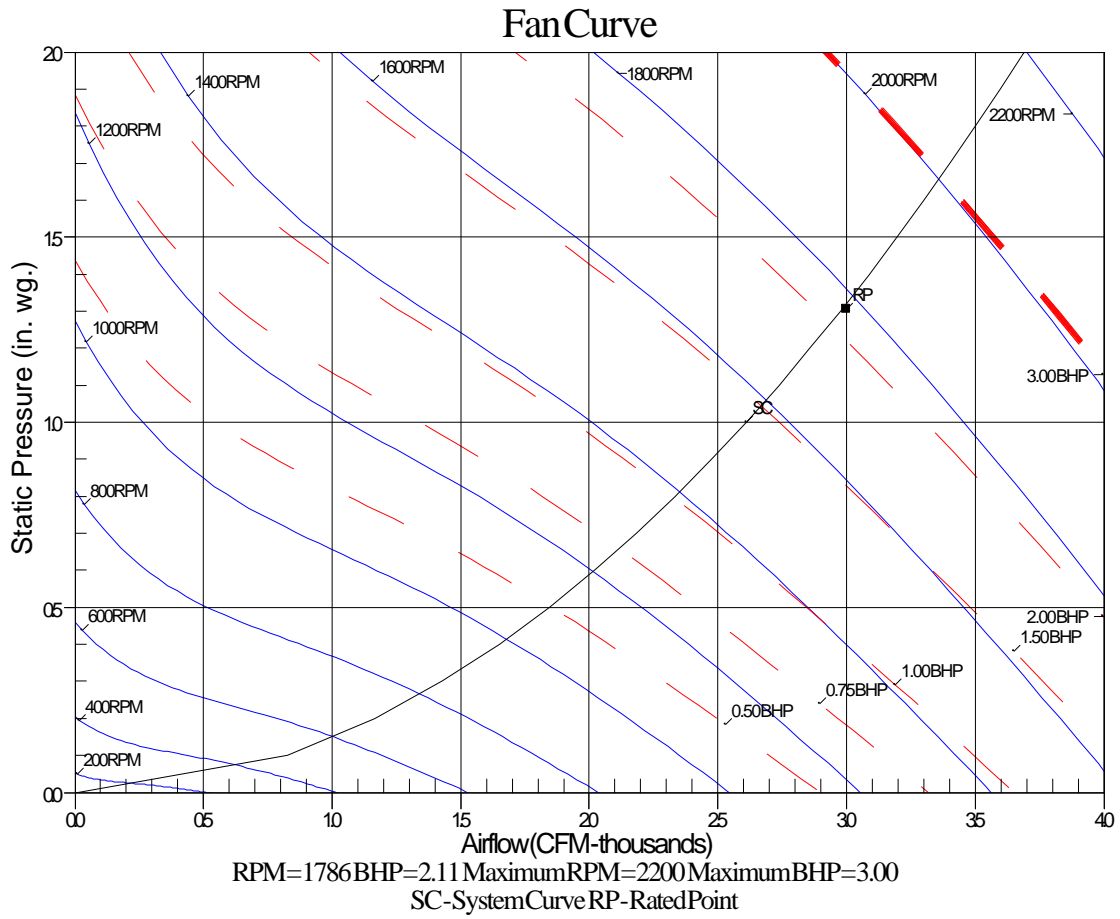
- A Sound Power Levels at Unit's Acoustic Center, Lw
- B A-Weighted Sound Power Levels at Unit's Acoustic Center, LwA
- C Sound Pressure Levels at Specific Distance from Unit, Lp
- D A-Weighted Sound Pressure Levels at Specific Distance from Unit, LpA

Calculation methods used in this program are patterned after the ASHRAE Guide; other ASHRAE Publications and the AHRI Acoustical Standards. While a very significant effort has been made to insure the technical accuracy of this program, it is assumed that the user is knowledgeable in the art of system sound estimation and is aware of the tolerances involved in real world acoustical estimation. This program makes certain assumptions as to the dominant sound sources and sound paths which may not always be appropriate to the real system being estimated. Because of this, no assurances can be offered that this software will always generate an accurate sound prediction from user supplied input data. If in doubt about the estimation of expected sound levels in a space, an Acoustical Engineer or a person with sound prediction expertise should be consulted.

Performance Summary For RTU 1

Project: Nike 76 North Bend WA
Prepared By: Dan Dillman

02/11/2025
05:09PM



Unit Feature Sheet for RTU 1

Project: Nike 76 North Bend WA
Prepared By: Dan Dillman

02/11/2025
05:09PM



PURON ADVANCE™ PACKAGED ROOFTOP GAS HEATING ELECTRIC COOLING UNITS WITH ECOBLUE™ TECHNOLOGY - 7.5, 8.5, 10, 12.5, 15 TONS

48FE units are single-packaged electric cooling, gas heating rooftops. All units are pre-wired and pre-charged with Carrier™ snow, low global warming potential Puron Advance™ (R-454B) refrigerant. Puron Advance represents a 75% reduction in refrigerant GWP over legacy Puron™ (R-410A) models. All units are factory tested in both heating and cooling modes and use two-stage cooling capacity control.



Use of the AHRI Certified TM Mark indicates a manufacturer's participation in the program. For verification of certification for individual products, go to www.ahri.directory.org.



PERFORMANCE FEATURES

- " Puron Advance (R-454B) refrigerant
- " Two-stage cooling capacity control on all models
- " IEEERs up to 15.0
- " New-A2L leak detection and dissipation system factory installed standard
- " Leak system ensures unit and occupant safety during operation and includes an alarm relay for optional use
- " Onboard recallable leak detection history for easier troubleshooting and service
- " Direct Drive EcoBlue™ Technology Indoor fan system uses Vane Axial fan design and electronically commutated motor
- " New Unit Control Board with intuitive quick fan speed adjustment
- " ASHRAE 90.1 and IECC code compliant
- " Sound levels as low as 79 dB
- " Exclusive non-corrosive composite condensate pans in accordance with ASHRAE 62 Standard, sloping design; side or center drain
- " AFUE Gas efficiencies up to 82%
- " Induced draft combustion design
- " Redundant gas valve, with up to 2 stages of heating
- " Pre-painted exterior panels and primer-coated interior panel tested to 500 hours salt spray protection
- " TXV refrigerant metering system on all models
- " Exclusive iGC solid-state control for on-board diagnostics with LED error code designation, burner control logic and energy saving indoor fan motor delay

PERFORMANCE FEATURES (continued)

- " Standard cooling operating range up to 125 °F (52 °C), except 14 size models with 115 °F (46 °C) and down to 40 °F (-4 °C), except 14 size models with 0 °F (-18 °C) Low Ambient kit allows cooling operation down to 0 °F (-18 °C).
- " Rated in accordance with AHRI Standards 340/360
- " Designed in accordance with Underwriters Laboratories Standard UL 60335-1 and UL 60335-2-40
- " Listed by UL and CUL-Canada

MAINTENANCE FEATURES

- " Large access panels with easy grip handles
- " Innovative, easy starting, no-strips screw feature on unit access panels
- " Two-inch disposable return air filters
- " Tool-less filter access door
- " New Vane Axial evaporator-fan system has no fan belts, pulleys, blower shaft, and blower bearings with side out design.
- " Unit control board facilitates simple safety circuit troubleshooting and simplified control box arrangement.

INSTALLATION FEATURES

- " Field Convertible from vertical to horizontal airflow on all models. No special kit required on 08-14 models. Supply duct kit required for 16 size model only.
- " Provisions for thru-the-bottom power entry capability
- " Single point gas and electric connections
- " Full perimeter base rail with built-in rigging adapters and fork truck slots

STANDARD LIMITED PARTS WARRANTY

- " 10-year heat exchanger-Aluminized
- " 15-year heat exchanger-Stainless Steel
- " 5-year compressor parts
- " 3-year SystemVu™ controller
- " 1-year parts

AVAILABLE OPTIONS:

- " Patented Humid-MiZer™ adaptive dehumidification system. This option also includes Low Ambient controls
- " Through the base connections for gas and electric available as option
- " Stainless steel gas heat exchanger includes tubes, vestibule plate and collector box.
- " Disconnect and convenience outlet options
- " High static motor options
- " Smoke detector, supply and/or return air
- " Corrosion resistant options for evaporator and condenser coils
- " CO2 Sensor
- " Phase Monitor Protection
- " 4 MERV-13 Filters
- " 2-position damper
- " Hinged access panels
- " Integrated economizer system. Low and ULTRA Low Leak versions.
- " Condensate overflow switch
- " SystemVu Controls

Unit Report For RTU 2

Project: Nike 76 North Bend WA
 Prepared By: Dan Dillman

02/11/2025
 05:09PM

Unit Parameters

Unit Model:.....**48FEDM08A2M5-3W4D0**
 Unit Size:.....**08 (7.5 Tons)**
 Volts-Phase-Hertz:.....**230-3-60**
 Heating Type:.....**Gas**
 Refrigerant:.....**R-454B**
 Heat Control:.....**Low Gas Heat**
 Duct Cfg:.....**Vertical Supply / Vertical Return**
 DX Options:.....**Single Circuit, Two Stage Cooling**

Dimensions (ft. in.) & Weight (lb.) ***

Unit Length:.....**7' 4.125"**
 Unit Width:.....**4' 11.5"**
 Unit Height:.....**3' 5.25"**
Total Operating Weight:.....948 lb

*** Weights and Dimensions are approximate. Weight does not include unit packaging. Approximate dimensions are provided primarily for shipping purposes. For exact dimensions and weights, refer to appropriate product data catalog.

Lines and Filters

Gas Line Size:.....**1/2**
 Condensate Drain Line Size:.....**3/4**
 Return Air Filter Type:.....**Throwaway**
 Return Air Filter Quantity:.....**4**
 Return Air Filter Size:.....**16 x 20 x 2**

Selection includes construction throwaway filter into the base fan curve.

Unit Configuration

Standard/Medium Static - EcoBlue Vane Axial Fan
 Al/Cu - Al/Cu - Louvered Hail Guards
 SystemVu Controller
 ULL Enthalpy Economizer with Barometric Relief
 Hinged Panels and Unpowered Convenience Outlet
 Thru-The-Base Connections
 Standard Packaging

Warranty Information

1-Year parts(std.)
 5-Year compressor parts(std.)
 10-Year heat exchanger - Aluminized(std.)
 3-Year SystemVu
COMPLETE UNIT YEAR 2-5 PARTS ONLY

NOTE: Please see Warranty Catalog 500-089 for explanation of policies and ordering methods.

Ordering Information

Part Number	Description	Quantity
48FEDM08A2M5-3W4D0	Rooftop Unit	1
Field Installed Accessories		
CRHUMDSN001B00	Outdoor or Return Air RH Sensor	1
CRLAMBKT002A00	Low Ambient Solid-State Variable Speed Motor Controller	1
HC40GE233	Motormaster I Compatible Condenser Fan Motor	2
CRPWREXH022A01	Power Exhaust System	1
CRPECONV004A00	Hinged Panel Sealing Angle Kit	1

Performance Summary For RTU 2

Project: Nike 76 North Bend WA
Prepared By: Dan Dillman

02/11/2025
05:09PM

Part Number:48FEDM08A2M5-3W4D0

Refrigerant:..... **R-454B**
ARI EER:..... **11.20**
IEER:..... **15.0**

Base Unit Dimensions

Unit Length:..... **88.1** in
Unit Width:..... **59.5** in
Unit Height:..... **41.3** in

Operating Weight

Base Unit Weight:..... **787** lb
Al/Cu - Al/Cu - Louvered Hail Guards:..... **17** lb
SystemVu Controller:..... **2** lb
ULL Enthalpy Economizer with Barometric Relief:..... **57** lb
Hinged Panels and Unpowered Convenience Outlet:..... **9** lb
Thru-The-Base Connections:..... **1** lb

Accessories

Power Exhaust System:..... **75** lb

Total Operating Weight:..... **948** lb

Unit

Unit Voltage-Phase-Hertz:..... **230-3-60**
Air Discharge:..... **Vertical**
Fan Drive Type:..... **Vane Axial**
Actual Airflow:..... **3000** CFM
Site Altitude:..... **322** ft

Cooling Performance

Condenser Entering Air DB:..... **95.0** F
Evaporator Entering Air DB:..... **84.5** F
Evaporator Entering Air WB:..... **64.5** F
Entering Air Enthalpy:..... **29.64** BTU/lb
Evaporator Leaving Air DB:..... **56.4** F
Evaporator Leaving Air WB:..... **54.4** F
Evaporator Leaving Air Enthalpy:..... **22.89** BTU/lb
Gross Cooling Capacity:..... **90.08** MBH
Gross Sensible Capacity:..... **90.08** MBH
Compressor Power Input:..... **6.19** kW
Coil Bypass Factor:..... **0.101**

Mixed Air

Outdoor Air Airflow:..... **865** CFM
Outdoor Air DB:..... **95.0** F
Outdoor Air WB:..... **65.0** F
Outdoor Air Htg. Temp.:..... **18.0** F
Return Air DB:..... **80.3** F
Return Air WB:..... **64.3** F
Return Air Htg. Temp.:..... **56.4** F

Heating Performance

Heating Airflow:..... **3000** CFM
Entering Air Temp:..... **45.3** F
Leaving Air Temp:..... **77.5** F
Gas Heating Input Capacity:..... **125.0** MBH
Gas Heating Output Capacity:..... **103.0** MBH
Temperature Rise:..... **32.2** F
Thermal Efficiency (%):..... **82.0**

Supply Fan

Performance Summary For RTU 2

Project: Nike 76 North Bend WA
 Prepared By: Dan Dillman

02/11/2025
 05:09PM

External Static Pressure:.....	1.20	in wg
Options / Accessories Static Pressure		
Economizer:.....	0.11	in wg
Power Exhaust:.....	(Fan Data Includes Drop)	
Application External Static (ESP + Unit Opts/Acc.):.....	1.31	in wg
Fan RPM:.....	1786	
Fan Power:.....	2.11	BHP
NOTE:.....	Selected IFM RPM Range: 1040 - 2000	

Selection includes construction throwaway filter into the base fan curve. This filter is not MERV Rated.

Power Exhaust

Return Duct Static:.....	0.40	in wg
Max. Air To Exhaust:.....	2817	CFM

Electrical Data

Voltage Range:.....	187 - 253
Compressor #1 RLA:.....	12.2
Compressor #1 LRA:.....	120
Compressor #2 RLA:.....	12.2
Compressor #2 LRA:.....	120
Indoor Fan Motor Type:.....	MED
Indoor Fan Motor FLA (Total):.....	6.4
Combustion Fan Motor FLA (ea):.....	0.48
Power Supply MCA:.....	41
Power Supply MOCP (Fuse or HACR):.....	50
Disconnect Size FLA:.....	43
Disconnect Size LRA:.....	261
Electrical Convenience Outlet:.....	None
Power Exhaust [Kit Qty / FLA(ea kit)]:.....	1 / 3.8
Outdoor Fan [Qty / FLA (ea)]:.....	2 / 1.5

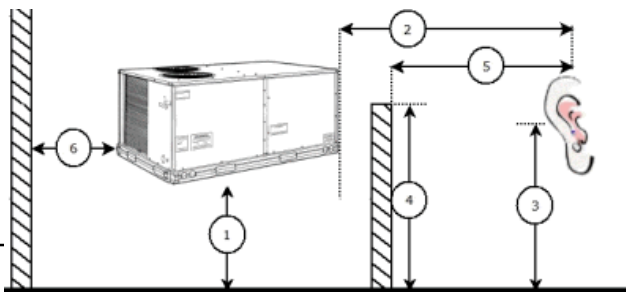
Control Panel SCCR: 5kA RMS at Rated Symmetrical Voltage

Acoustics

Sound Power Levels, db re 10E-12 Watts

	Discharge	Inlet	Outdoor
63 Hz	90.7	85.3	85.6
125 Hz	87.1	82.0	84.7
250 Hz	80.4	74.0	80.5
500 Hz	77.0	69.8	76.0
1000 Hz	78.5	70.0	72.4
2000 Hz	75.3	64.5	68.0
4000 Hz	71.2	56.6	62.8
8000 Hz	62.0	49.9	59.3
A-Weighted	82.7	74.3	79.0

Advanced Acoustics



Performance Summary For RTU 2

Project: Nike 76 North Bend WA
Prepared By: Dan Dillman

02/11/2025
05:09PM

Advanced Acoustics Parameters

1. Unit height above ground:.....**30.0** ft
2. Horizontal distance from unit to receiver:.....**50.0** ft
3. Receiver height above ground:.....**5.7** ft
4. Height of obstruction:.....**0.0** ft
5. Horizontal distance from obstruction to receiver:.....**0.0** ft
6. Horizontal distance from unit to obstruction:.....**0.0** ft

Detailed Acoustics Information

Octave Band Center Freq. Hz	63	125	250	500	1k	2k	4k	8k	Overall
A	85.6	84.7	80.5	76.0	72.4	68.0	62.8	59.3	89.2 Lw
B	59.4	68.6	71.9	72.8	72.4	69.2	63.8	58.2	78.5 LwA
C	53.2	52.3	48.1	43.6	40.0	35.6	30.4	26.9	56.8 Lp
D	27.0	36.2	39.5	40.4	40.0	36.8	31.4	25.8	46.1 LpA

Legend

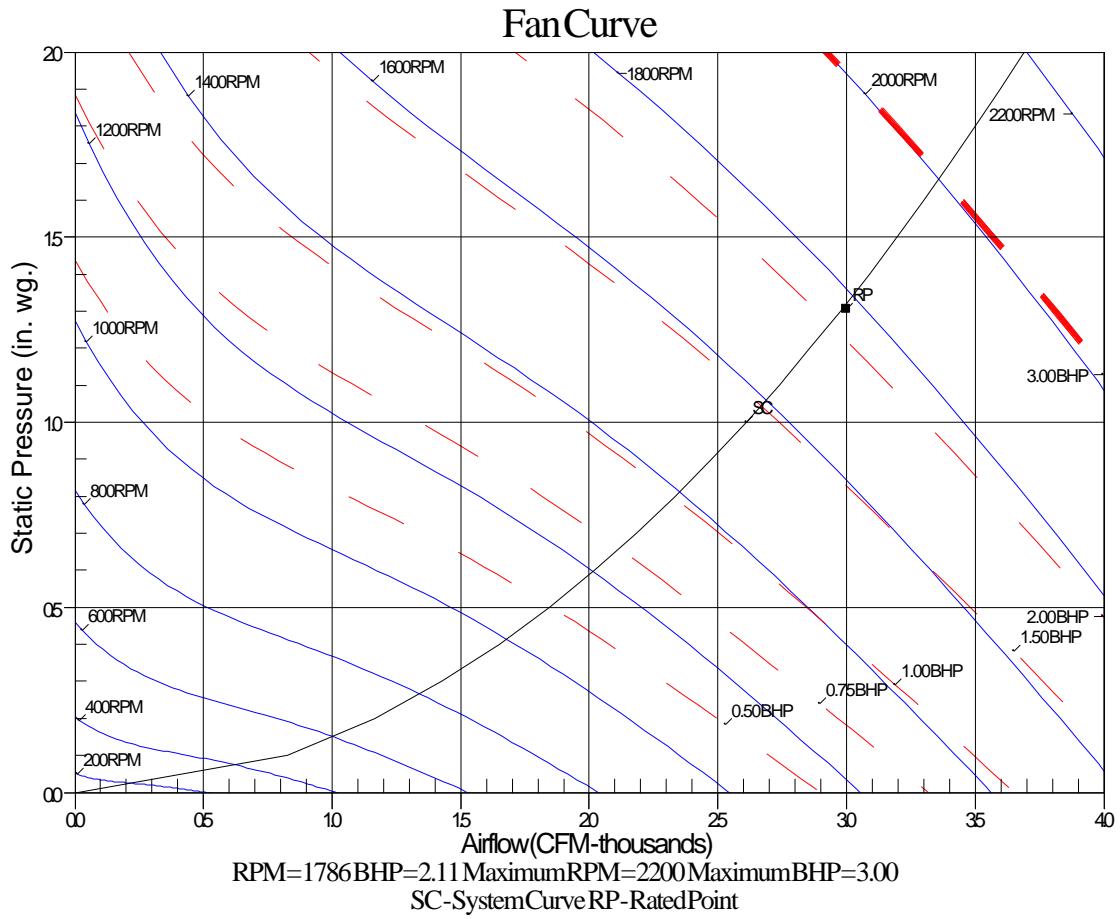
- A Sound Power Levels at Unit's Acoustic Center, Lw
- B A-Weighted Sound Power Levels at Unit's Acoustic Center, LwA
- C Sound Pressure Levels at Specific Distance from Unit, Lp
- D A-Weighted Sound Pressure Levels at Specific Distance from Unit, LpA

Calculation methods used in this program are patterned after the ASHRAE Guide; other ASHRAE Publications and the AHRI Acoustical Standards. While a very significant effort has been made to insure the technical accuracy of this program, it is assumed that the user is knowledgeable in the art of system sound estimation and is aware of the tolerances involved in real world acoustical estimation. This program makes certain assumptions as to the dominant sound sources and sound paths which may not always be appropriate to the real system being estimated. Because of this, no assurances can be offered that this software will always generate an accurate sound prediction from user supplied input data. If in doubt about the estimation of expected sound levels in a space, an Acoustical Engineer or a person with sound prediction expertise should be consulted.

Performance Summary For RTU 2

Project: Nike 76 North Bend WA
Prepared By: Dan Dillman

02/11/2025
05:09PM



Unit Report For RTU 3,4,5

Project: Nike 76 North Bend WA
 Prepared By: Dan Dillman

02/11/2025
 05:09PM

Unit Parameters

Unit Model:.....**48FEEM07A3M5-3W4D0**
 Unit Size:.....**07 (6 Tons)**
 Volts-Phase-Hertz:.....**230-3-60**
 Heating Type:.....**Gas**
 Refrigerant:.....**R-454B**
 Heat Control:.....**Medium Heat**
 Duct Cfg:.....**Vertical Supply / Vertical Return**
 DX Options:**Single Circuit, Two Stage Cooling (07 only)**

Dimensions (ft. in.) & Weight (lb.) ***

Unit Length:.....**6' 2.375"**
 Unit Width:.....**3' 10.625"**
 Unit Height:.....**3' 5.375"**
Total Operating Weight:.....788 lb

*** Weights and Dimensions are approximate. Weight does not include unit packaging. Approximate dimensions are provided primarily for shipping purposes. For exact dimensions and weights, refer to appropriate product data catalog.

Lines and Filters

Gas Line Size:.....**1/2**
 Condensate Drain Line Size:.....**3/4**
 Return Air Filter Type:.....**Throwaway**
 Return Air Filter Quantity:.....**4**
 Return Air Filter Size:.....**16 x 16 x 2**

Selection includes construction throwaway filter into the base fan curve.

Unit Configuration

Medium Heat
 High Static - EcoBlue Vane Axial Fan
 Al/Cu - Al/Cu - Louvered Hail Guards
 SystemVu Controls
 ULL Enthalpy Economizer w/Barometric Relief
 Hinged Panels and Unpowered Convenience Outlet
 Thru-The-Base Connections
 Standard Packaging

Warranty Information

1-Year parts(std.)
 5-Year compressor parts(std.)
 10-Year heat exchanger - Aluminized(std.)
 3-Year SystemVu
COMPLETE UNIT YEAR 2-5 PARTS ONLY

NOTE: Please see Warranty Catalog 500-089 for explanation of policies and ordering methods.

Ordering Information

Part Number	Description	Quantity
48FEEM07A3M5-3W4D0	Rooftop Unit	3
Field Installed Accessories		
CRLAMBKT001A01	Low Ambient Single-Phase Solid-State Variable Speed Motor Controller	3
HC40GR242	Low Ambient Compatible Ball Bearing Condenser Fan Motor	3
CRWINSTR001A00	Winter Start Package	3
CRPWREXH030A01	Power Exhaust System (208/230-1-60)	3
CRPECONV003A00	Hinged Panel Sealing Angle Kit	3

Certified Drawing for RTU 3,4,5

Project: Nike 76 North Bend WA
Prepared By: Dan Dillman

02/11/2025
05:09PM

NOTES:

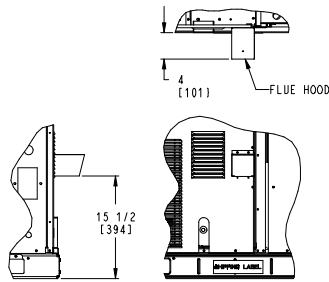
1. DIMENSIONS ARE IN INCHES, DIMENSIONS IN [] ARE IN MILLIMETERS.
2. CENTER OF GRAVITY
3. DIRECTION OF AIR FLOW
4. ALL VIEW DRAWN USING 3RD ANGLE

UNIT	J	K
48FE**04	33 3/8 [847]	18 5/8 [472]
48FE**05	33 3/8 [847]	14 7/8 [377]
48FE**06	33 3/8 [847]	14 7/8 [377]
48FE**07	41 3/8 [1051]	18 5/8 [472]

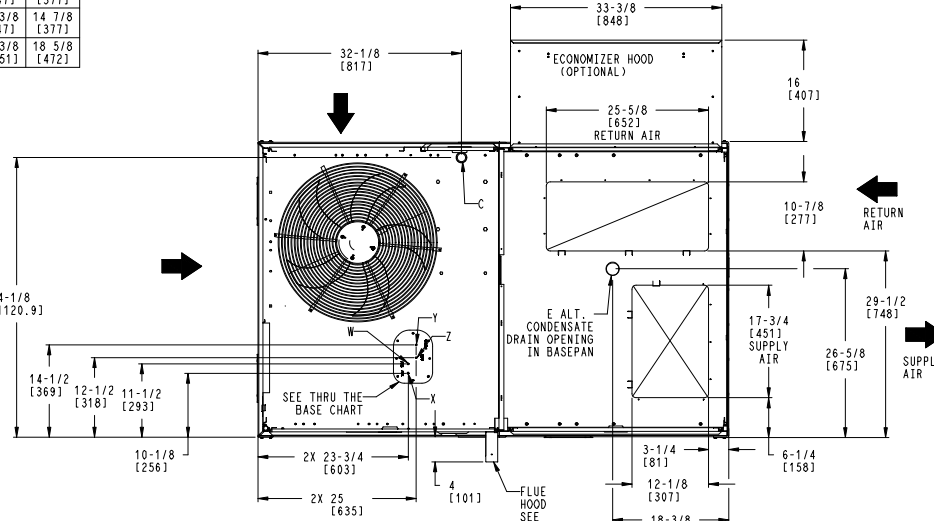
Carrier THIS DOCUMENT IS THE PROPERTY OF CARRIER CORPORATION AND IS DELIVERED UPON THE EXPRESS CONDITION THAT THE CONTENTS WILL NOT BE DISCLOSED OR USED WITHOUT CARRIER CORPORATION'S WRITTEN CONSENT. SUBMISSION OF THESE DRAWINGS OR DOCUMENTS DOES NOT CONSTITUTE PART PERFORMANCE OR ACCEPTANCE OF CONTRACT.

CONNECTION SIZES	
A	1 3/8" [35] DIA FIELD POWER SUPPLY HOLE
B	2" [50] DIA POWER SUPPLY KNOCKOUT
C	1 3/4" [51] DIA GAUGE ACCESS PLUG
D	7/8" [22] DIA FIELD CONTROL WIRING HOLE
E	3/4"-14 NPT CONDENSATE DRAIN
F	1/2"-14 NPT GAS CONNECTION
G	2 1/2" [64] DIA POWER SUPPLY KNOCK-OUT

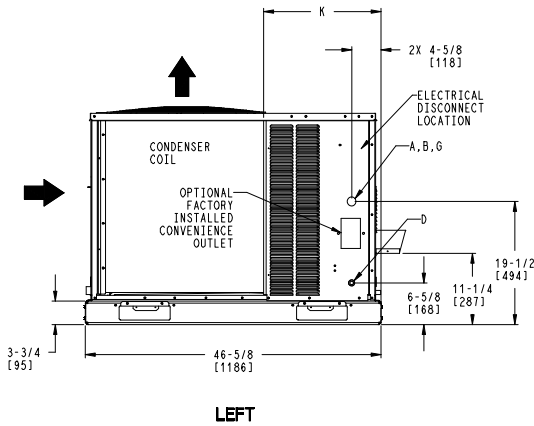
THRU-THE-BASE CHART THESE HOLES REQUIRED FOR USE CRBTMPR008A00, 009A00			
	THREADED CONDUIT SIZE	WIRE USE	REQ'D HOLE SIZES (MAX.)
W	1/2"	115V	7/8" [22.2]
X	1/2"	24V	7/8" [22.2]
Y	3/4"	POWER	1-1/8" [28.6]
Z*	009A00 1/2" FPT	GAS	1-1/8" [28.6]
FOR "THRU-THE-BASEPAN" FACTORY OPTION, FITTINGS FOR ONLY X, Y, & Z ARE PROVIDED			
* 1008A00 PROVIDES 3/4" FPT THRU CURB FLANGE & FITTING.			



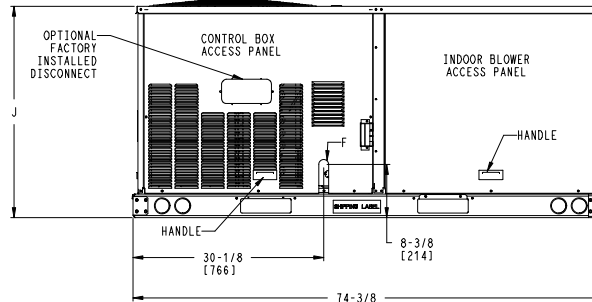
DETAIL U
FLUE HOOD OPENING FOR
ULTRA LOW NOX UNITS ONLY
SCALE 1:8



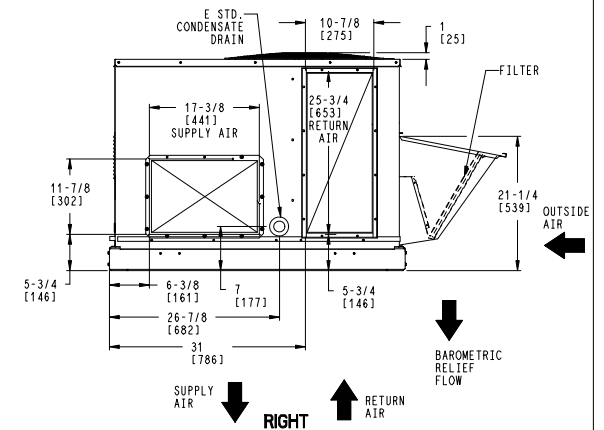
TOP



LEFT



FRONT



RIGHT

ITC CLASSIFICATION	SHEET	DATE	SUPERCEDES	DESCRIPTION	PROJECT	REV
U.S. ECCN:NSR	1 OF 3	11/17/23	-	48FE 04-07 SINGLE PACKAGE ELECTRICAL COOLING WITH GAS HEAT	48TC006964	-

Certified Drawing for RTU 3,4,5

Project: Nike 76 North Bend WA
Prepared By: Dan Dillman

02/11/2025
05:09PM

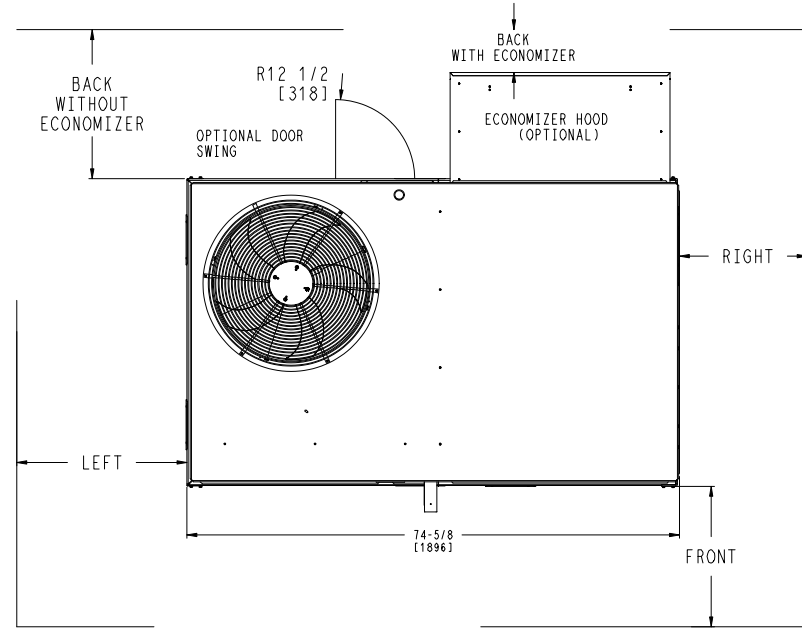
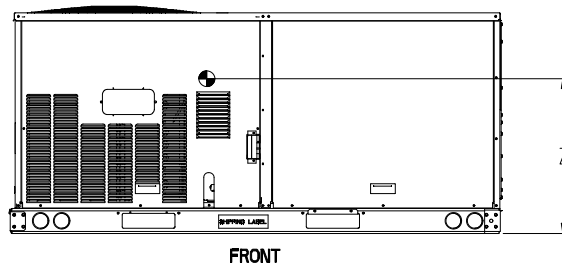
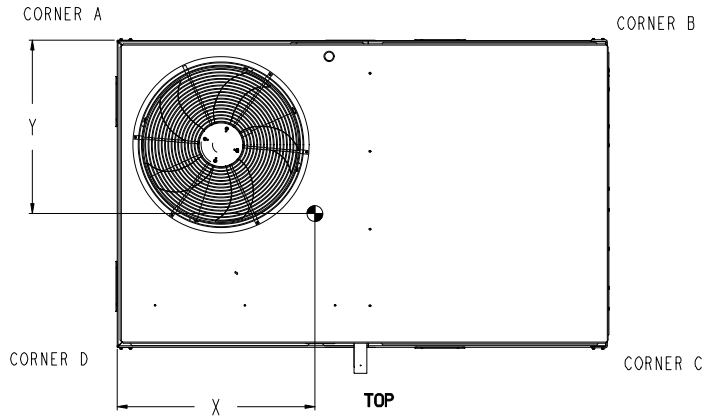
UNIT	STD. UNIT WEIGHT *		CORNER WEIGHT (A)		CORNER WEIGHT (B)		CORNER WEIGHT (C)		CORNER WEIGHT (D)		C.G.			HEIGHT
	LBS.	KG.	LBS.	KG.	LBS.	KG.	LBS.	KG.	LBS.	KG.	X	Y	Z	
48FE**04	482	219	113	51	116	53	128	58	125	57	37 5/8 [956]	24 9/16 [624]	18 1/4 [464]	[464]
48FE**05	543	246	138	63	133	60	133	60	138	63	36 1/2 [927]	23 3/8 [594]	18	[457]
48FE**06	556	252	142	64	136	62	136	62	142	64	36 1/2 [927]	23 3/8 [594]	18	[457]
48FE**07	607	275	162	73	152	69	141	64	151	68	36 [914]	22 1/2 [572]	19 3/8 [492]	

* STANDARD UNIT WEIGHT IS WITH LOW GAS HEAT AND WITHOUT PACKAGING.
FOR OTHER OPTIONS AND ACCESSORIES, REFER TO THE PRODUCT DATA CATALOG.

THIS TABLE IS FOR "ULTRA LOW NOX" UNITS ONLY

UNIT	STD. UNIT WEIGHT**		CORNER WEIGHT (A)		CORNER WEIGHT (B)		CORNER WEIGHT (C)		CORNER WEIGHT (D)		C.G.			HEIGHT
	LBS.	KG.	LBS.	KG.	LBS.	KG.	LBS.	KG.	LBS.	KG.	X	Y	Z	
48FEG*04	512	233	120	55	122	55	136	62	134	61	37 1/2 [953]	24 11/16 [627]	18 1/8 [460]	
48FEG*05	573	260	146	66	139	63	141	64	147	67	36 3/8 [924]	23 1/2 [597]	18	[457]
48FEG*06	586	266	149	68	143	65	144	65	151	69	36 3/8 [924]	23 1/2 [597]	18	[457]

** STANDARD UNIT WEIGHT IS WITH WITHOUT PACKAGING.
FOR OTHER OPTIONS AND ACCESSORIES, REFER TO THE PRODUCT DATA CATALOG.



NOTES:

1. FOR ALL MINIMUM CLEARANCES LOCAL CODES OR JURISDICTIONS MAY PREVAIL.

SURFACE	CLEARANCE		OPERATING CLEARANCE
	SERVICE WITH CONDUCTIVE BARRIER	SERVICE WITH NONCONDUCTIVE BARRIER	
FRONT	48 [1219mm]	36 [914mm]	18 [457mm]
LEFT	48 [1219mm]	42 [1067mm]	18 [457mm]
BACK W/O HOOD	48 [1219mm]	42 [1067mm]	18 [457mm]
BACK W/HOOD	36 [914mm]	36 [914mm]	18 [457mm]
RIGHT	36 [914mm]	36 [914mm]	18 [457mm]
TOP	72 [1829mm]	72 [1829mm]	72 [1829mm]

ITC CLASSIFICATION U.S. ECCN:NSR	SHEET 2 OF 3	DATE 11/17/23	SUPERCEDES -	48FE 04-07 SINGLE PACKAGE ELECTRICAL COOLING WITH GAS HEAT	48TC006964	REV -
-------------------------------------	-----------------	------------------	-----------------	--	------------	----------

Performance Summary For RTU 3,4,5

Project: Nike 76 North Bend WA
Prepared By: Dan Dillman

02/11/2025
05:09PM

Part Number:48FEEM07A3M5-3W4D0

Refrigerant:..... **R-454B**
ARI EER:..... **11.20**
IEER:..... **15.5**

Base Unit Dimensions

Unit Length:..... **74.4** in
Unit Width:..... **46.6** in
Unit Height:..... **41.4** in

Operating Weight

Base Unit Weight:..... **607** lb
Medium Heat:..... **63** lb
Al/Cu - Al/Cu - Louvered Hail Guards:..... **17** lb
SystemVu Controls:..... **2** lb
ULL Enthalpy Economizer w/Barometric Relief:..... **35** lb
Hinged Panels and Unpowered Convenience Outlet:..... **9** lb
Thru-The-Base Connections:..... **4** lb

Accessories

Winter Start Package:..... **1** lb
Power Exhaust System (208/230-1-60):..... **50** lb

Total Operating Weight:..... **788** lb

Unit

Unit Voltage-Phase-Hertz:..... **230-3-60**
Air Discharge:..... **Vertical**
Fan Drive Type:..... **Vane Axial**
Actual Airflow:..... **2400** CFM
Site Altitude:..... **322** ft

Cooling Performance

Condenser Entering Air DB:..... **95.0** F
Evaporator Entering Air DB:..... **84.6** F
Evaporator Entering Air WB:..... **64.5** F
Entering Air Enthalpy:..... **29.64** BTU/lb
Evaporator Leaving Air DB:..... **56.1** F
Evaporator Leaving Air WB:..... **54.2** F
Evaporator Leaving Air Enthalpy:..... **22.79** BTU/lb
Gross Cooling Capacity:..... **73.14** MBH
Gross Sensible Capacity:..... **72.80** MBH
Compressor Power Input:..... **5.09** kW
Coil Bypass Factor:..... **0.060**

Mixed Air

Outdoor Air Airflow:..... **695** CFM
Outdoor Air DB:..... **95.0** F
Outdoor Air WB:..... **65.0** F
Outdoor Air Htg. Temp.:..... **18.0** F
Return Air DB:..... **80.3** F
Return Air WB:..... **64.3** F
Return Air Htg. Temp.:..... **56.4** F

Heating Performance

Heating Airflow:..... **2400** CFM
Entering Air Temp:..... **45.3** F
Leaving Air Temp:..... **79.6** F
Gas Heating Input Capacity:..... **110.0** MBH
Gas Heating Output Capacity:..... **88.0** MBH
Temperature Rise:..... **34.3** F

Performance Summary For RTU 3,4,5

Project: Nike 76 North Bend WA
 Prepared By: Dan Dillman

02/11/2025
 05:09PM

Thermal Efficiency (%):..... **80.0**

Supply Fan

External Static Pressure:..... **1.20** in wg
 Options / Accessories Static Pressure
 Economizer:..... **0.17** in wg
 Power Exhaust:..... **(Fan Data Includes Drop)**
 Application External Static (ESP + Unit Opts/Acc.):..... **1.37** in wg
 Fan RPM:..... **2602**
 Fan Power:..... **1.87** BHP
 NOTE:..... **Selected IFM RPM Range: 1596 - 2836**

Selection includes construction throwaway filter into the base fan curve. This filter is not MERV Rated.

Power Exhaust

Return Duct Static:..... **0.40** in wg
 Max. Air To Exhaust:..... **495** CFM

Electrical Data

Voltage Range:..... **187 - 253**
 Compressor #1 RLA:..... **18.9**
 Compressor #1 LRA:..... **162**
 Indoor Fan Motor Type:..... **HIGH**
 Indoor Fan Motor FLA (Total):..... **6.5**
 Combustion Fan Motor FLA (ea):..... **0.48**
 Power Supply MCA:..... **34**
 Power Supply MOCP (Fuse or HACR):..... **50**
 Disconnect Size FLA:..... **33**
 Disconnect Size LRA:..... **177**
 Electrical Convenience Outlet:..... **None**
 Power Exhaust [Kit Qty / FLA(ea kit)]:..... **1 / 1.9**
 Outdoor Fan [Qty / FLA (ea)]:..... **1 / 1.5**

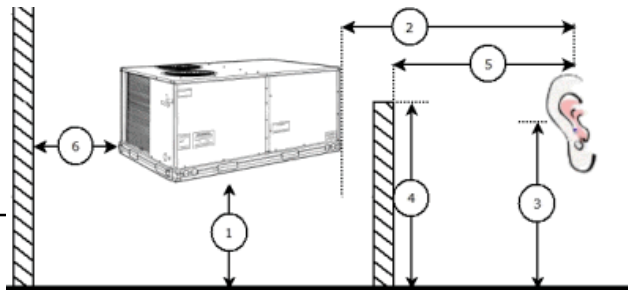
Control Panel SCCR: 5kA RMS at Rated Symmetrical Voltage

Acoustics

Sound Power Levels, db re 10E-12 Watts

	Discharge	Inlet	Outdoor
63 Hz	97.0	93.8	85.6
125 Hz	89.2	85.9	84.7
250 Hz	83.5	75.9	80.5
500 Hz	79.7	73.6	76.0
1000 Hz	77.5	74.4	72.4
2000 Hz	75.3	65.9	68.0
4000 Hz	69.7	59.0	62.8
8000 Hz	63.9	52.3	59.3
A-Weighted	83.5	78.1	79.0

Advanced Acoustics



Performance Summary For RTU 3,4,5

Project: Nike 76 North Bend WA
 Prepared By: Dan Dillman

02/11/2025
 05:09PM

Advanced Acoustics Parameters

1. Unit height above ground:.....**30.0** ft
2. Horizontal distance from unit to receiver:.....**50.0** ft
3. Receiver height above ground:.....**5.7** ft
4. Height of obstruction:.....**0.0** ft
5. Horizontal distance from obstruction to receiver:.....**0.0** ft
6. Horizontal distance from unit to obstruction:.....**0.0** ft

Detailed Acoustics Information

Octave Band Center Freq. Hz	63	125	250	500	1k	2k	4k	8k	Overall
A	85.6	84.7	80.5	76.0	72.4	68.0	62.8	59.3	89.2 Lw
B	59.4	68.6	71.9	72.8	72.4	69.2	63.8	58.2	78.5 LwA
C	53.2	52.3	48.1	43.6	40.0	35.6	30.4	26.9	56.8 Lp
D	27.0	36.2	39.5	40.4	40.0	36.8	31.4	25.8	46.1 LpA

Legend

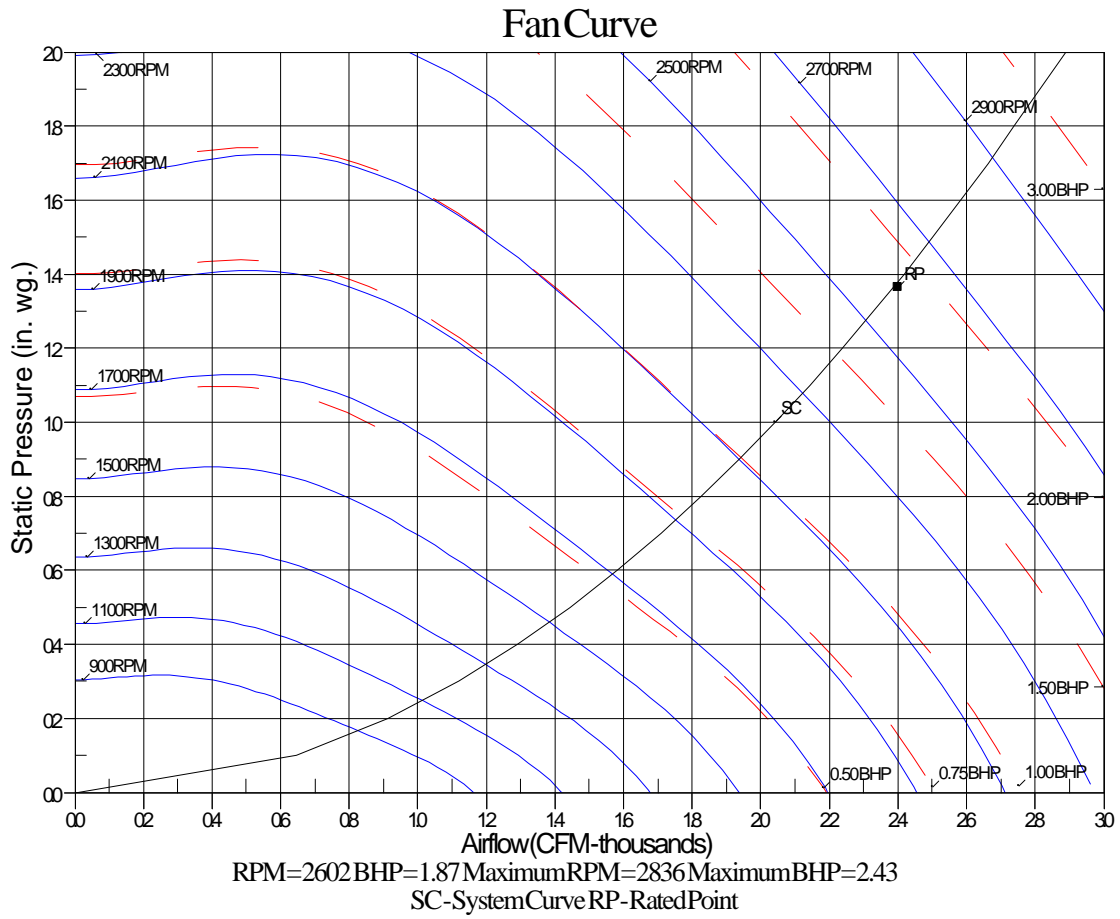
- A Sound Power Levels at Unit's Acoustic Center, Lw
- B A-Weighted Sound Power Levels at Unit's Acoustic Center, LwA
- C Sound Pressure Levels at Specific Distance from Unit, Lp
- D A-Weighted Sound Pressure Levels at Specific Distance from Unit, LpA

Calculation methods used in this program are patterned after the ASHRAE Guide; other ASHRAE Publications and the AHRI Acoustical Standards. While a very significant effort has been made to insure the technical accuracy of this program, it is assumed that the user is knowledgeable in the art of system sound estimation and is aware of the tolerances involved in real world acoustical estimation. This program makes certain assumptions as to the dominant sound sources and sound paths which may not always be appropriate to the real system being estimated. Because of this, no assurances can be offered that this software will always generate an accurate sound prediction from user supplied input data. If in doubt about the estimation of expected sound levels in a space, an Acoustical Engineer or a person with sound prediction expertise should be consulted.

Performance Summary For RTU 3,4,5

Project: Nike 76 North Bend WA
Prepared By: Dan Dillman

02/11/2025
05:09PM



Unit Feature Sheet for RTU 3,4,5

Project: Nike 76 North Bend WA
Prepared By: Dan Dillman

02/11/2025
05:09PM



PURON ADVANCE™ PACKAGED ROOFTOP GAS HEATING/ELECTRIC COOLING UNITS 3, 4, 5 TONS – 13.4 SEER2, 6 TON – 15.5 IEER

48FE units are single-packaged electric cooling, gas heating rooftops. All units are prewired and pre-charged with Carrier's new, low global warming potential Puron Advance™ (R-454B) refrigerant. Puron Advance represents a 75% reduction in refrigerant GWP over legacy Puron™ (R-410A) models. All units are factory tested in both heating and cooling modes. 3–5-ton models use single stage cooling capacity control. 6-ton model uses two stage cooling capacity control.



Use of the AHRI Certified TM Mark indicates a manufacturer's participation in the program. For verification of certification for individual products, go to www.ahriindustry.org.

Puron
ADVANCE™

PERFORMANCE FEATURES

- Puron Advance (R-454B) refrigerant
- Single-stage cooling capacity 04-06 models, Two Stage on 07 models
- SEER2s up to 13.4
- IEERs up to 15.5
- New - A2L leak detection and dissipation system factory installed standard
- Leak system ensures unit and occupant safety during operation and includes an alarm relay for optional use
- Onboard recallable leak detection history for easier troubleshooting and service
- Direct Drive – EcoBlue™ Technology Indoor fan system uses Vane Axial fan design and electronically commutated motor
- New Unit Control Board with intuitive quick fan speed adjustment
- Sound levels as low as 79 dB
- Exclusive non-corrosive composite condensate pans in accordance with ASHRAE 62 Standard, sloping design; side or center drain
- AFUE Gas efficiencies up to 81%
- Induced draft combustion design
- Redundant gas valve, with up to 2 stages of heating
- Pre-painted exterior panels and primer-coated interior panels tested to 500 hours salt spray protection
- Acutrol™ refrigerant metering system on 04-06 models, TXV on 07 size models
- Exclusive IGC solid-state control for on-board diagnostics with LED error code designation, burner control logic and energy saving indoor fan motor delay

PERFORMANCE FEATURES (continued)

- Dedicated 3-5 ton "Low NOx and Ultra Low NOx" models available that meet California Air Quality Management NOx requirement. Models of 40 nanogram/joule and 14 nanogram/joule are available. Both Low NOx models include stainless steel heat exchangers
- Standard cooling operating range up to 115°F (46°C), and down to 40°F (4°C). Low Ambient allows cooling operation down to -20°F (-29°C).
- Rated in accordance with AHRI Standards 210/240 (04-06 sizes) and 340/360 (07 size)
- Designed in accordance with Underwriters' Laboratories Standard UL 60335-1 and UL 60335-2-40
- Listed by UL and CUL-Canada

MAINTENANCE FEATURES

- Large access panels with easy grip handles
- Innovative, easy starting, no-strip screw feature on unit access panels
- Two-inch disposable return air filters
- Tool-less filter access door
- New central terminal board facilitating simple safety circuit troubleshooting and simplified control box arrangement

INSTALLATION FEATURES

- Field Convertible from vertical to horizontal airflow on all models, No special kit required.
- Provisions for thru-the-bottom power entry capability
- Single point gas and electric connections
- Full perimeter base rail with built-in rigging adapters and fork truck slots
- Two stage cooling thermostats required on 07 size to help provide energy saving and comfort benefits.

STANDARD LIMITED PARTS WARRANTY

- 10-year heat exchanger - Aluminized
- 15-year heat exchanger - Stainless Steel
- 10-year heat exchanger - Ultra/Low NOx models
- 5-year compressor parts
- 3-year SystemVu™ controller
- 1-year parts

AVAILABLE OPTIONS:

- Patented Humidi-MiZer® adaptive dehumidification system. This option also includes Low Ambient controls
- Through the base connections for gas and electric available as option
- Stainless steel gas heat exchanger includes tubes, vestibule plate and collector box. Stainless Steel Heat Exchangers are standard on all Low NOx and Ultra Low NOx models.
- Disconnect and convenience outlet options
- Medium and High static motor options
- Smoke detector, supply and/or return air
- Corrosion resistant options for evaporator and condenser coils
- CO2 Sensor
- Phase Monitor Protection
- 4" MERV-13 Filters
- 2-position damper
- Hinged access panels
- Integrated economizer system. Low and ULTRA Low Leak versions.
- Condensate overflow switch
- SystemVu Controls