

Report By:

National TAB
1329 E. KEMPER ROAD
SUITE 4210
CINCINNATI, OH 45246



Report: TAB Report
Function: Test, Adjust, & Balance
Date: 05/12/2025
Completed By: National TAB

PROJECT

03-31-25 WAWA #6300 WAYCROSS, GA

S GEORGIA PARKWAY & GEORGIA STREET

WAYCROSS, GA 31503

Client

Wawa
260 West Baltimore Pike
Wawa, PA 19063

National TAB

Project: 03-31-25 WAWA #6300 WAYCROSS, GA

Table Of Contents

Section	Page #
Summary	3
REMARK	4
BALANCE SCHEDULE	7
Checklist Data	8
AHU/RTU	19
FAN - Exhaust	28
GRD	32

Project Summary

The summary below provides a quick understanding of our scope of work and general testing procedures. Enclosed in the report is further detail about your building performance including recommendations, asset data, and pictures. Our focus is to work with the trades to remedy any issues or deficiencies during the actual field balancing and not after the balancing has occurred to achieve a positive environment and outcome. The level of success is determined by the availability of the trades, possible parts needed, or time constraints.

RTU's (Roof Top Units) w/ Diffusers

Each of the RTU's were measured at their terminal devices or via traverse to establish a total flow for that unit. Each RTU was adjusted to within tolerance of the engineer's design flow. Each outlet was then adjusted to within tolerance of the design flow. Outside air was measured by reading the intake air opening with a velocity grid and multiplying by the free area. The outside air damper was adjusted until the airflow was within the design requirements. Any equipment that fell outside of that tolerance is noted throughout the report.

General Exhaust Fans w/ Grilles

The general exhaust fans were measured by reading each air device with a flow hood. The total airflow for each fan is equivalent to the sum of these readings. Fan speed was then adjusted so that the airflow was within tolerance of design. Each terminal device was balanced to within tolerance of the design volume using the installed volume dampers. Any equipment that fell outside of this tolerance is noted throughout the report.

Ceiling Exhaust Fans

The ceiling exhaust fans were measured using a flow hood. If speed adjustment was provided, the fan speed was adjusted to within design tolerance. Any equipment that fell outside of this tolerance is noted throughout the report.

Final Building Tests

After completing the test and balance the final building pressure was measured. It was confirmed that the building pressure fell within acceptable tolerances and that the pressure measurement coincides with the actual and design net airflow. Any deviations from these standards are noted throughout the report.

Issue List

- EF-1 - No Dampers



03-31-25 WAWA #6300 WAYCROSS, GA

Project Issue Information

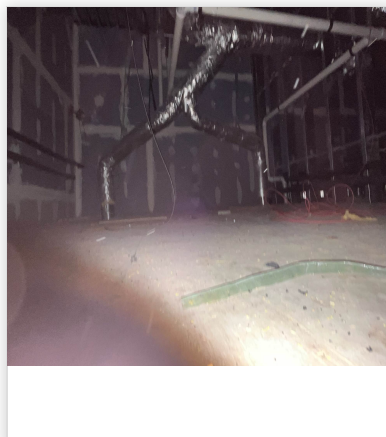
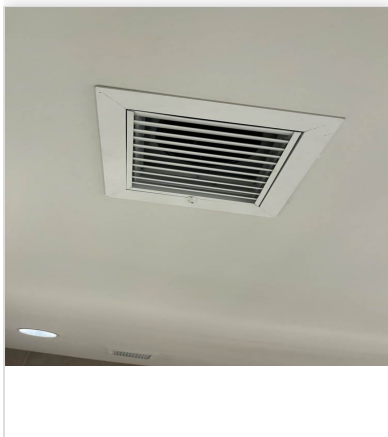
Issue Name : EF-1 - No Dampers
Description : Restroom exhaust grilles do not have dampers installed. Recommend installing face-accessible dampers to allow for balancing.
Created By : National TAB **Assigned To :** National TAB - Will Turnbough
Status : Open
Priority : Urgent **Asset Tag :**
Originated Date : 04/03/2025 - Mark Johnson - National TAB

Project Issue File Details



Project Issue Response Details

- **07/01/2025 National TAB - Ian Fuller**
 - Issue not resolved as of 7/1. Unable to balance individual diffusers.



07/01/2025

07/01/2025

AIR BALANCE SCHEDULE

UNIT	AREA SERVED	HVAC SUPPLY		HVAC RETURN		HVAC OUTDOOR		OA %		HOOD MAKE-UP		HOOD EXHAUST		GENERAL EXH.	
		DESIGN	ACTUAL	DESIGN	ACTUAL	DESIGN	ACTUAL	DESIGN	ACTUAL	DESIGN	ACTUAL	DESIGN	ACTUAL	DESIGN	ACTUAL
RTU-1	RETAIL	3400	3308	2900	2805	500	503	14.7%	15.2%						
RTU-2	DELI	4000	3989	3525	3483	475	506	11.9%	12.7%						
RTU-3	COFFEE/SPEC	3000	2955	2750	2700	250	255	8.3%	8.6%						
EF-1	RESTROOMS													325	322
EF-2														400	404
TOTALS		10400	10252	9175	8988	1225	1264			0	0	0	0	725	726

NET BUILDING AIRFLOW CALCULATION

TOTALS	DESIGN	ACTUAL
TOTAL OA	1225	1264
TOTAL EXHAUST	725	726
NET AIRFLOW	500	538

DOOR TESTED	BUILDING PRESSURE MEASUREMENTS (IN. H2O)
FRONT	0.0053
SIDE	0.0078
REAR	0.0112
AVERAGE	0.0081

FINAL CHECKS

- ACTUAL NET AIRFLOW COINCIDES WITH DESIGN: ✓

- MEASURED PRESSURES COINCIDES WITH ACTUAL NET AIRFLOW: ✓

- PRESSURE FALLS WITHIN IMC TOLERANCE OF +/-0.02" W.C. ✓

NOTES:

CheckList List

- 01: RTU's/AHU's
- 02: LENNOX SETUP PARAMETERS
- 03: SENSOR WIRING (LENNOX)
- 04: EF'S
- 05: CLOSEOUT CHECKS



03-31-25 WAWA #6300 WAYCROSS, GA

CheckList Information

Name : 01: RTU's/AHU's **Status :** Completed

Assigned Organization : National TAB **Asset :**

Requesting Organization : National TAB

Created Date : 03/24/2025 - Tara Metcalf - National TAB

Completed Date : 07/01/2025 - Ian Fuller - National TAB

CheckList Item Details

RTU's/AHU's

All diffusers and grilles are installed and match design? Pass

Comment:

(RESOLVED) Diffuser 2-9 not per plan (should be LD-1 type grille)



04/03/2025

Clean filters installed? Pass

Comment:

Economizers are assembled and functional? Pass

Comment:

Motors are all operating below the FLA rating?	Pass
Comment:	
Are belts tight?	N/A
Comment:	
Direct Drive	
If direct drive unit is the speed controller working?	Pass
Comment:	
Is gas piping installed and valves turned on?	N/A
Comment:	
Electric Heating	
Condensate drains are installed?	Pass
Comment:	
Unit free of noticeable noise and vibration	Pass
Comment:	
Final outside air damper position is marked with permanent marker?	Pass
Comment:	
No alarms present?	Pass
Comment:	
Any noticeable duct leakage?	Pass
Comment:	
Total supply and OA flows are balanced within +/-5% and supply & return diffusers within +/-10%?	Pass
Comment:	
IN TEST MODE, TEST THE FOLLOWING:	
Cooling mode is operational? Record EAT/LAT for each unit:	Pass

Comment:

RTU 1: EAT=68°F, LAT=52°F / RTU 2: EAT= / RTU 3: EAT=70°F, LAT=51°F

Heating mode is operational? Record EAT/LAT for each unit:

Pass

Comment:

RTU 1: EAT=76°F, LAT=77°F / RTU 2: N/A / RTU 3: EAT=70°F, LAT=80°F

Dehumidification mode is operational? (Feel dehumidification coil with your hand. Is it hot?) Record EAT/LAT for each unit:

Pass

Comment:

RTU 1: EAT=73°F, LAT=68°F / RTU 2: EAT= / RTU 3: EAT=70°F, LAT=66°F

TRAVERSE READINGS (AFTER DIFFUSER BALANCING COMPLETE)

RTU-1 Supply / Return

Comment:

RTU-2 Supply / Return

Comment:

RTU-3 Supply / Return

Comment:



03-31-25 WAWA #6300 WAYCROSS, GA

CheckList Information

Name : 02: LENNOX SETUP PARAMETERS **Status :** Completed

Assigned Organization : National TAB **Asset :**

Requesting Organization : National TAB

Created Date : 03/24/2025 - Tara Metcalf - National TAB

Completed Date : 07/01/2025 - Ian Fuller - National TAB

CheckList Item Details

UNIT ID CONFIGURATIONS

BACNET CONFIGURATION: GO TO SETTINGS>GENERAL>CONFIGURATION ID1 POSITION 5 SET TO "N". Pass

Comment:

NETWORK CONFIGURATION: GO TO SETUP>NETWORK INTEGRATION, SET TO BACNET IP Pass

Comment:

CONTROL MODE: SET CONTROL MODE TO ROOM SENSOR: CO2, TEMP & HUMIDITY (PER UNIT, AS NEEDED). Pass

Comment:

INDIVIDUAL PARAMETER CONFIGURATIONS (MECHANICAL CONTRACTOR TO DEFINE / AS APPLICABLE):

PARAMETER 105 DEHUMID MODE: 7 NO CONDITIONS Pass

Comment:

PARAMETER 106 DEHUMID SETPOINT: 50, THIS IS A CENTERED SET POINT (+/-) Yes

Comment:

PARAMETER 107 DEHUMID DEADBAND: 3 (DEFAULT) THIS IS THE ACTUAL +/- VALUE Pass

Comment:

PARAMETER 117 CO2 DAMPER MAX OPEN: 50%

Pass

Comment:

PARAMETER 118 CO2 START OPEN PPM: 1500

Pass

Comment:

PARAMETER 119 CO2 MAX OPEN PPM: 1500

Pass

Comment:

PARAMETER 137 OCCHET SET POINT: 68 (BACK UP)

Pass

Comment:

PARAMETER 131 SET TO THE SAME % AS THE MINMIUM OA DAMPER SETPOINT

Pass

Comment:

PARAMETER 139 OCC COOLING SET POINT: 72 (BACK UP)

Pass

Comment:

PARAMETER 154 OCC BLOWER MODE: ON-CONTINUOUS 1

Pass

Comment:

CFM VALUES / MSAV FAN SPEEDS (AIR BALANCER TO DEFINE / IF APPLICABLE):

OA DAMPER SET TO SAME POSITION IN ALL FAN SPEEDS?

Pass

Comment:

ALL FAN SPEEDS SET TO THE SAME CFM VALUE (ENTER SETPOINTS BELOW)

Pass

Comment:

RTU1: 68% RTU2: 74% RTU3: 65%

HEAT CFM VALUE: PER THE HVAC SCHEDULE

Pass

Comment:

HIGH COOL CFM VALUE: THE HIGH COOL CFM VALUE

Pass

Comment:

LOW COOL CFM VALUE: MATCH THE HIGH COOL CFM VALUE

Pass

Comment:

VENTILATION CFM VALUE: MATCH THE HIGH COOL CFM VALUE

Pass

Comment:



03-31-25 WAWA #6300 WAYCROSS, GA

CheckList Information

Name : 03: SENSOR WIRING (LENNOX) **Status :** Completed

Assigned Organization : National TAB **Asset :**

Requesting Organization : National TAB

Created Date : 03/24/2025 - Tara Metcalf - National TAB

Completed Date : 06/12/2025 - Ian Fuller - National TAB

CheckList Item Details

COMBINATION TEMPERATURE/HUMIDITY SENSOR

Sensors are installed where shown on the drawing? Pass

Comment:

2 conductor shielded cable has one wire landed to Vin, one to GND, and the shield wire is not connected. Pass

Comment:

For second shielded cable, one wire is landed to Vout and the shield wire is not connected. Pass

Comment:

Verify that the CORE or Prodigy controller is sensing a relative humidity (record the reading) Pass

Comment:

RTU1: 52% RTU2: 53% RTU3: 58%



03-31-25 WAWA #6300 WAYCROSS, GA

CheckList Information

Name : 04: EF'S **Status :** Completed

Assigned Organization : National TAB **Asset :**

Requesting Organization : National TAB

Created Date : 03/24/2025 - Tara Metcalf - National TAB

Completed Date : 06/12/2025 - Ian Fuller - National TAB

CheckList Item Details

EF's

Rotation is correct?	Pass
----------------------	------

Comment:

Belts are tight (if applicable)?	N/A
----------------------------------	-----

Comment:

Speed controller installed and functional (if applicable)?	Pass
--	------

Comment:

There is no major leakage around base of fan?	Pass
---	------

Comment:

Is the motor operating below the motor FLA rating?	Pass
--	------

Comment:

Back draft damper installed and can it fully open?	Pass
--	------

Comment:

Unit free of noticeable noise and vibration?	Pass
--	------

Comment:

Total exhaust flow balanced within +/-5% and grilles are within +/-10%?

Fail

Comment:

NO DAMPERS ON EF#1



03-31-25 WAWA #6300 WAYCROSS, GA

CheckList Information

Name : 05: CLOSEOUT CHECKS **Status :** Completed

Assigned Organization : National TAB **Asset :**

Requesting Organization : National TAB

Created Date : 03/24/2025 - Tara Metcalf - National TAB

Completed Date : 07/01/2025 - Ian Fuller - National TAB

CheckList Item Details

SPACE COMFORT

Is space free of drafting? Pass

Comment:

Is space comfortable in all areas? Pass

Comment:

Is the space free of ventilation noise? Pass

Comment:

BUILDING PRESSURE

Do actual net building airflow, design net building airflow, and pressure coincide? If not why? (All three should either be positive or negative) Pass

Comment:

AVG: 0.0081"

National TAB

Project: 03-31-25 WAWA #6300 WAYCROSS, GA

System/Unit: AHU/RTU



Asset: RTU1

AREA: CORE

Unit Data		
	Design	Actual
MFG	LENNOX ENLIGHT	LENNOX ENLIGHT
Serial Num	-	5624H02036
Model Num	LCT102H4E	LCT102H4EG1Y
Type	RTU	RTU
Configuration	VERTICAL	VERTICAL
Num OA Filters 1	-	1
OA Filter Size 1	-	23x14
Num Final Filter 1	-	4
Final Filter Size 1	-	20x25x2

Test Data		
	Design	Actual
SF CFM	3400	3308
SF RPM	-	1496
MOTOR RPM	-	1496
RA CFM	2900	2805
OA CFM	500	503
RL Voltage	-	207/207/207
RL Amperage	-	3.4/3.4/3.4
SF System SetPt	-	68%
OA Damper Position	-	50%
OA Damper Type	-	SINGLE BLADE

Motor Data		
	Design	Actual
Motor MFG	-	EBMPAPST
Frame	-	NL
Horsepower	3.75	3.8
Motor Rpm	-	2200
Phase	3	3
Rated Voltage	208	200-240
Rated Amperage	-	8.7
Service Factor	-	NL

Performance Data		
	Design	Actual
MA Plenum SP	-	-0.26"
Fan Suction SP	-	-0.76"
Fan Discharge SP	-	0.61"
Total ESP	0.50"	0.87"
Fan Total SP	-	1.37"

Drive Data	
	Actual
Motor Sheave Size	DD
Motor Bore Size	DD
Motor Sheave SetPt	DD
Fan Sheave Size	DD
Fan Sheave Bore	DD
Belt CL Distance	DD
Num of Belts	DD
Belt Size	DD

Completed By: Mark Johnson on 04/03/2025

Unit Data - PHOTO LOG



04/01/2025

National TAB

Project:03-31-25 WAWA #6300 WAYCROSS, GA

AHU/RTU



Diffuser Supply (GRD)

RTU1/CORE

Asset									
Asset Name	Location	Type	Size	DESIGN CFM	AK	CFM(1)	CFM(2)	FINAL CFM	% to design
SGRD1	RETAIL	CD1	6"	100	1	77	96	96	96.0
SGRD2	RETAIL	LD1	8"	200	1	149	193	193	96.5
SGRD3	RETAIL	LD1	10"	300	1	207	326	304	101.3
SGRD4	RETAIL	LD1	10"	300	1	165	253	270	90.0
SGRD5	RETAIL	LD1	8"	250	1	105	125	225	90.0
SGRD6	RETAIL	LD1	8"	250	1	109	154	248	99.2
SGRD7	RETAIL	LD1	8"	250	1	175	296	239	95.6
SGRD8	RETAIL	LD1	10"	275	1	217	343	269	97.8
SGRD9	RETAIL	LD1	10"	300	1	177	318	312	104.0
SGRD10	RETAIL	LD1	10"	300	1	55	121	301	100.3
SGRD11	RETAIL	LD1	10"	250	1	219	408	241	96.4
SGRD12	RETAIL	CD1	10"	275	1	150	285	269	97.8
SGRD13	RETAIL	CD1	6"	150	1	62	105	139	92.7
SGRD14	RETAIL	CD4	6"	75	1	71	66	80	106.7
SGRD15	RETAIL	CD4	6"	75	1	94	186	71	94.7
SGRD16	RETAIL	LD1	10"	50	1	279	506	51	102.0
Total				3400		2311	3781	3308	97.29%

National TAB

Project: 03-31-25 WAWA #6300 WAYCROSS, GA

System/Unit: AHU/RTU



Asset: RTU2

AREA:DELI

Unit Data		
	Design	Actual
MFG	LENNOX ENLIGHT	LENNOX ENLIGHT
Serial Num	-	5624H03687
Model Num	LCT120H4E	LCT120H4EN1Y
Type	RTU	RTU
Configuration	VERTICAL	VERTICAL
Num OA Filters 1	-	1
OA Filter Size 1	-	23x14
Num Final Filter 1	-	4
Final Filter Size 1	-	20x25x2

Test Data		
	Design	Actual
SF CFM	4000	3989
SF RPM	-	1628
MOTOR RPM	-	74%
RA CFM	3525	3483
OA CFM	475	506
RL Voltage	-	208/208/208
RL Amperage	-	5.8/5.6/5.7
SF System SetPt	-	74%
OA Damper Position	-	33%
OA Damper Type	-	SINGLE BLADE

Motor Data		
	Design	Actual
Motor MFG	-	EBMPAPST
Frame	-	NL
Horsepower	3.75	3.8
Motor Rpm	-	2200
Phase	3	3
Rated Voltage	208	200-240
Rated Amperage	-	8.7
Service Factor	-	NL

Performance Data		
	Design	Actual
MA Plenum SP	-	-0.45"
Fan Suction SP	-	-0.83"
Fan Discharge SP	-	1.35"
Total ESP	0.50"	1.80"
Fan Total SP	-	2.18"

Drive Data	
	Actual
Motor Sheave Size	DD
Motor Bore Size	DD
Motor Sheave SetPt	DD
Fan Sheave Size	DD
Fan Sheave Bore	DD
Belt CL Distance	DD
Num of Belts	DD
Belt Size	DD

Completed By: Mark Johnson on 04/03/2025

Unit Data - PHOTO LOG



04/01/2025

National TAB

Project:03-31-25 WAWA #6300 WAYCROSS, GA

AHU/RTU



Diffuser Supply (GRD)

RTU2/DELI

Asset									
Asset Name	Location	Type	Size	DESIGN CFM	AK	CFM(1)	CFM(2)	FINAL CFM	% to design
SGRD1	DELI	CD3	8"	150	1	81	139	135	90.0
SGRD2	DELI	CD1	12"	550	1	132	540	567	103.1
SGRD3	DELI	LD1	10"	410	1	114	389	404	98.5
SGRD4	DELI	LD1	10"	410	1	225	306	406	99.0
SGRD5	DELI	LD1	10"	410	1	993	974	391	95.4
SGRD6	DELI	LD1	10"	400	1	137	149	396	99.0
SGRD7	DELI	LD1	10"	410	1	140	150	375	91.5
SGRD8	DELI	LD1	12"	410	1	781	404	420	102.4
SGRD9	DELI	LD1	10"	400	1	773	426	438	109.5
SGRD10	DELI	CD1	10"	450	1	751	449	457	101.6
Total				4000		4127	3926	3989	99.72%

Diffuser Ret/Exh (GRD)

RTU2/DELI

Asset									
Asset Name	Location	Type	Size	DESIGN CFM	AK	CFM(1)	CFM(2)	FINAL CFM	% to design
EGRD1	DELI	G1	12"	705	1	748	650	661	93.8
EGRD2	DELI	G1	12"	705	1	830	674	683	96.9
EGRD3	DELI	G1	12"	705	1	753	632	666	94.5
EGRD4	DELI	G1	12"	705	1	781	687	709	100.6
EGRD5	DELI	G1	12"	705	1	1015	812	701	99.4
Total				3525		4127	3455	3420	97.02%

National TAB

Project: 03-31-25 WAWA #6300 WAYCROSS, GA

System/Unit: AHU/RTU



Asset: RTU3

AREA:COFFEE /SPECIAL

Unit Data		
	Design	Actual
MFG	LENNOX ENLIGHT	LENNOX ENLIGHT
Serial Num	-	5624H02039
Model Num	LCT092H4E	LCT092H4EG1Y
Type	RTU	RTU
Configuration	VERTICAL	VERTICAL
Num OA Filters 1	-	1
OA Filter Size 1	-	23x14
Num Final Filter 1	-	4
Final Filter Size 1	-	20x25x2

Test Data		
	Design	Actual
SF CFM	3000	2955
SF RPM	-	1430
MOTOR RPM	-	1430
RA CFM	2750	2700
OA CFM	250	255
RL Voltage	-	209/208/209
RL Amperage	-	2.9/2.9/3.0
SF System SetPt	-	65%
OA Damper Position	-	39%
OA Damper Type	-	SINGLE BLADE

Motor Data		
	Design	Actual
Motor MFG	-	EBMPAPST
Frame	-	NL
Horsepower	3.75	3.8
Motor Rpm	-	2200
Phase	3	3
Rated Voltage	208	200-240
Rated Amperage	-	8.7
Service Factor	-	NL

Performance Data		
	Design	Actual
MA Plenum SP	-	-0.25"
Fan Suction SP	-	-0.52"
Fan Discharge SP	-	0.66"
Total ESP	0.50"	0.91"
Fan Total SP	-	1.18"

Drive Data	
	Actual
Motor Sheave Size	DD
Motor Bore Size	DD
Motor Sheave SetPt	DD
Fan Sheave Size	DD
Fan Sheave Bore	DD
Belt CL Distance	DD
Num of Belts	DD
Belt Size	DD

Completed By: Mark Johnson on 04/03/2025

Unit Data - PHOTO LOG



04/02/2025

National TAB

Project:03-31-25 WAWA #6300 WAYCROSS, GA

AHU/RTU



Diffuser Supply (GRD)

RTU3/COFFEE /SPECIAL

Asset									
Asset Name	Location	Type	Size	DESIGN CFM	AK	CFM(1)	CFM(2)	FINAL CFM	% to design
SGRD1	COFFEE/SPEC	CD2	12"	500	1	770	569	489	97.8
SGRD2	COFFEE/SPEC	LD1	10"	450	1	59	380	411	91.3
SGRD3	COFFEE/SPEC	LD1	10"	475	1	580	514	519	109.3
SGRD4	COFFEE/SPEC	LD1	10"	475	1	548	479	470	98.9
SGRD5	COFFEE/SPEC	LD1	10"	475	1	530	479	471	99.2
SGRD6	COFFEE/SPEC	LD1	10"	475	1	444	402	436	91.8
SGRD7	COFFEE/SPEC	CD1	8"	150	1	273	257	159	106.0
Total				3000		3204	3080	2955	98.5%

National TAB

Project: 03-31-25 WAWA #6300 WAYCROSS, GA

System/Unit: FAN - Exhaust



Asset: EF1

AREA:RESTROOMS

Unit Data		
	Design	Actual
MFG	GREENHECK	GREENHECK
Model Num	G-080	G-080-VG-1-17-X
Serial Num	-	25794863
Type	DOWNBLAST	DOWNBLAST
Configuration	VERTICAL	VERTICAL

Motor Data		
	Design	Actual
Motor MFG	-	VARI-GREEN
Frame	-	NL
Horsepower	1.10	1/10
Motor Rpm	-	300-1750
Phase	1	1
Voltage (rated)	120	115/208-230/277
Amperage (rated)	-	1.38/0.84/0.73
Service Factor	-	NL

Test Data		
	Design	Actual
CFM	325	322
Fan RPM	-	DD
Fan Rotation	-	CCW
Motor RPM	-	DD
System SetPt	-	5.5 V
RL Voltage	-	120
RL Amperage	-	0.6
Total ESP	.250"	0.10"
Fan Inlet SP	-	-0.10"
Fan Discharge SP	-	ATM

Completed By: Mark Johnson on 04/03/2025

Unit Data - PHOTO LOG



04/02/2025

National TAB

Project:03-31-25 WAWA #6300 WAYCROSS, GA

FAN - Exhaust



Diffuser Ret/Exh (GRD)

EF1/RESTROOMS

Asset									
Asset Name	Location	Type	Size	DESIGN CFM	AK	CFM(1)	CFM(2)	FINAL CFM	% to design
EGRD1	WOMENS RR	G-3	6"	100	1	94	94	94	94.0
EGRD2	WOMENS RR	G-3	8"	100	1	69	69	69	69.0
EGRD3	MENS RR	G-3	6"	50	1	79	79	79	158.0
EGRD4	MENS RR	G-4	6"	75	1	80	80	80	106.7
Total				325		322	322	322	99.08%

Asset	Notes	Date	Written By
EGRD1	No face dampers. Unable to balance individual diffusers.	06/12/2025	Ian Fuller

National TAB

Project: 03-31-25 WAWA #6300 WAYCROSS, GA

System/Unit: FAN - Exhaust



Asset: EF2

AREA:DELI

Unit Data		
	Design	Actual
MFG	GREENHECK	GREENHECK
Model Num	G-120	G-120-4-VG-1-19-X
Serial Num	-	25794864
Type	DOWNBLAST	DOWNBLAST
Configuration	VERTICAL	VERTICAL

Test Data		
	Design	Actual
CFM	400	404
Fan RPM	-	DD
Fan Rotation	-	CW
Motor RPM	-	DD
System SetPt	-	4.0
RL Voltage	-	120
RL Amperage	-	0.3
Total ESP	.250"	0.08"
Fan Inlet SP	-	-0.08"
Fan Discharge SP	-	ATM

Motor Data		
	Design	Actual
Motor MFG	-	VARI-GREEN
Frame	-	NL
Horsepower	.50	1/4
Motor Rpm	-	300-1750
Phase	1	1
Voltage (rated)	120	115/208-230/277
Amperage (rated)	-	2.85/1.7/1.5
Service Factor	-	NL

Completed By: Mark Johnson on 04/03/2025

Unit Data - PHOTO LOG



04/02/2025

National TAB

Project:03-31-25 WAWA #6300 WAYCROSS, GA

FAN - Exhaust



Diffuser Ret/Exh (GRD)

EF2/DELI

Asset									
Asset Name	Location	Type	Size	DESIGN CFM	AK	CFM(1)	CFM(2)	FINAL CFM	% to design
EGRD1	WASHROOM	G1	10"	200	1	397	184	184	92.0
EGRD2	BACKROOM	G1	10"	200	1	496	220	220	110.0
Total				400		893	404	404	101%

