

HOOD INFORMATION – JOB#5148796

HOOD NO	TAG	MODEL	MANUFACTURER	LENGTH	MAX COOKING TEMP	TYPE	APPLIANCE DUTY	DESIGN CFM/FT	TOTAL EXH CFM	EXHAUST PLENUM RISER(S)						TOTAL SUPPLY CFM	HOOD CONSTRUCTION	HOOD CONFIG		
										WIDTH	LENG	HEIGHT	DIA	CFM	VEL			SP	END TO END	ROW
1	HOOD 1	5412 SND-2-PSP-F	CAPTIVEAIRE	14' 0"	600 DEG	I	HEAVY	206	2884			4'	16"	2884	2066	-1.452'	2170	430 SS WHERE EXPOSED	ALONE	ALONE
2	DISH	4218 VHB-G	CAPTIVEAIRE	3' 6"	700 DEG	II	N/A	129	450			4'	10"	450	825	-0.051'	0	304 SS 100%	ALONE	ALONE

PATENT NUMBERS

AC-PSP (UNITED STATES) – US PATENT 7963830 B2.
 AC-PSP WALL (CANADA) – CA PATENT 2820509.
 AC-PSP ISLAND (CANADA) – CA PATENT 2520330.

HOOD INFORMATION

HOOD NO	TAG	FILTER(S)				LIGHT(S)				UTILITY CABINET(S)				FIRE SYSTEM PIPING	HOOD HANGING WEIGHT		
		TYPE	QTY	HEIGHT	LENGTH	EFFICIENCY @ 7 MICRONS	QTY	TYPE	WIRE GUARD	LOCATION	SIZE	FIRE SYSTEM				ELECTRICAL	SWITCHES
1	HOOD 1	CAPTRATE SOLD FILTER	10	16'	16'	85% SEE FILTER SPEC	5	L55 SERIES E26	NO	WALL MNT	12"x48"x24"	TANK FS	4.0/4.0	DCV-1111	1 LIGHT 1 FAN	YES	800 LBS
2	DISH						0									NO	117 LBS

HOOD OPTIONS

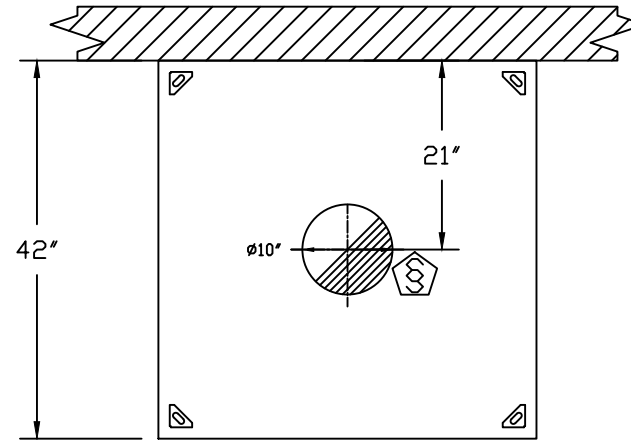
HOOD NO	TAG	OPTION
1	HOOD 1	BACKSPLASH 68.00" HIGH X 168.00" LONG 430 SS VERTICAL.
		BACKSPLASH 101.00" HIGH X 22.00" LONG 430 SS VERTICAL.
		BACKSPLASH 101.00" HIGH X 32.00" LONG 430 SS VERTICAL.
		BACKSPLASH - OUTSIDE CORNER 101.00" HIGH X 2.00" LEG LENGTH 430 SS VERTICAL.
		BACKSPLASH - OUTSIDE CORNER 101.00" HIGH X 2.00" LEG LENGTH 430 SS VERTICAL.
		RIGHT QUARTER END PANEL 27" TOP WIDTH, 0" BOTTOM WIDTH, 27" HIGH 430 SS.
		LEFT QUARTER END PANEL 27" TOP WIDTH, 0" BOTTOM WIDTH, 27" HIGH 430 SS.
		INSULATION FOR TOP OF HOOD.
2	DISH	INSULATION FOR BACK OF HOOD.
		SENSOR-CV.
		SHOP WRAPPER 5.00" HIGH FRONT, LEFT.

PERFORATED SUPPLY PLENUM(S)

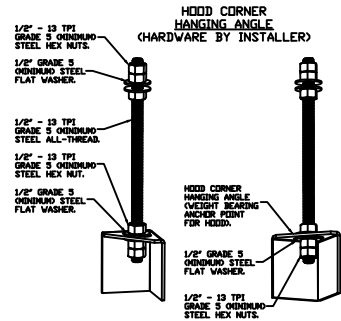
HOOD NO	TAG	POS	LENGTH	WIDTH	HEIGHT	TYPE	RISER(S)				
							WIDTH	LENG	DIA	CFM	SP
1	HOOD 1	Front	168"	16"	6"	MUA	12"	24"		723	0.198"
						MUA	12"	24"		723	0.198"
						MUA	12"	24"		723	0.198"

WALL-MOUNT UTILITY CABINET

HOOD NO	LOCATION	SIZE	UTILITY CABINET(S)				WEIGHT
			FIRE SYSTEM	ELECTRICAL	SWITCHES		
1	WALL MNT	12"x48"x24"	TANK FS	4.0/4.0	DCV-1111	1 LIGHT 1 FAN	340.00 LBS



PLAN VIEW – HOOD #2 (DISH)
 3' 6.00" LONG 4218VHB-G



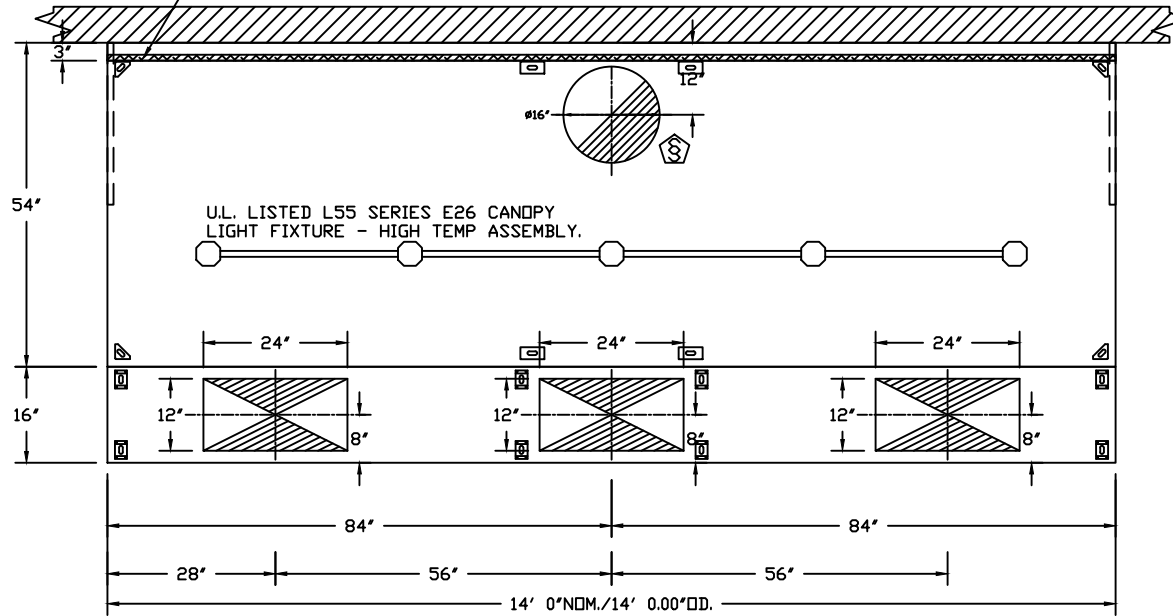
ASSEMBLY INSTRUCTIONS

HANGING ANGLE MUST BE SUPPORTED WITH 1/2" - 13 TPI GRADE 5 (MINIMUM) ALL-THREAD, SANDWICH HANGING ANGLES AND CEILING ANCHOR POINTS WITH 1/2" GRADE 5 (MINIMUM) STEEL FLAT WASHERS AND 1/2" - 13 TPI GRADE 5 (MINIMUM) HEX NUTS AS SHOWN. MUST USE DOUBLED HEX NUT CONFIGURATION BENEATH HOOD HANGING ANGLES AND ABOVE CEILING ANCHORS. MAINTAIN 1/4" OF EXPOSED THREADS BENEATH BOTTOM HEX NUT. TORQUE ALL HEX NUTS TO 57 FT-LBS.



JOB Wildfire Brewery	
LOCATION Wilder, KY, 41071	
DATE 1/26/2022	JOB # 5148796
DWG # 1	DRAWN BY jcirilli
REV.	SCALE 3/8" = 1'-0"

1' LAYER OF INSULATION FACTORY
 INSTALLED IN INTERNAL BACK STANDOFF.
 MEETS 0 INCH REQUIREMENTS FOR
 CLEARANCE TO COMBUSTIBLE SURFACES.

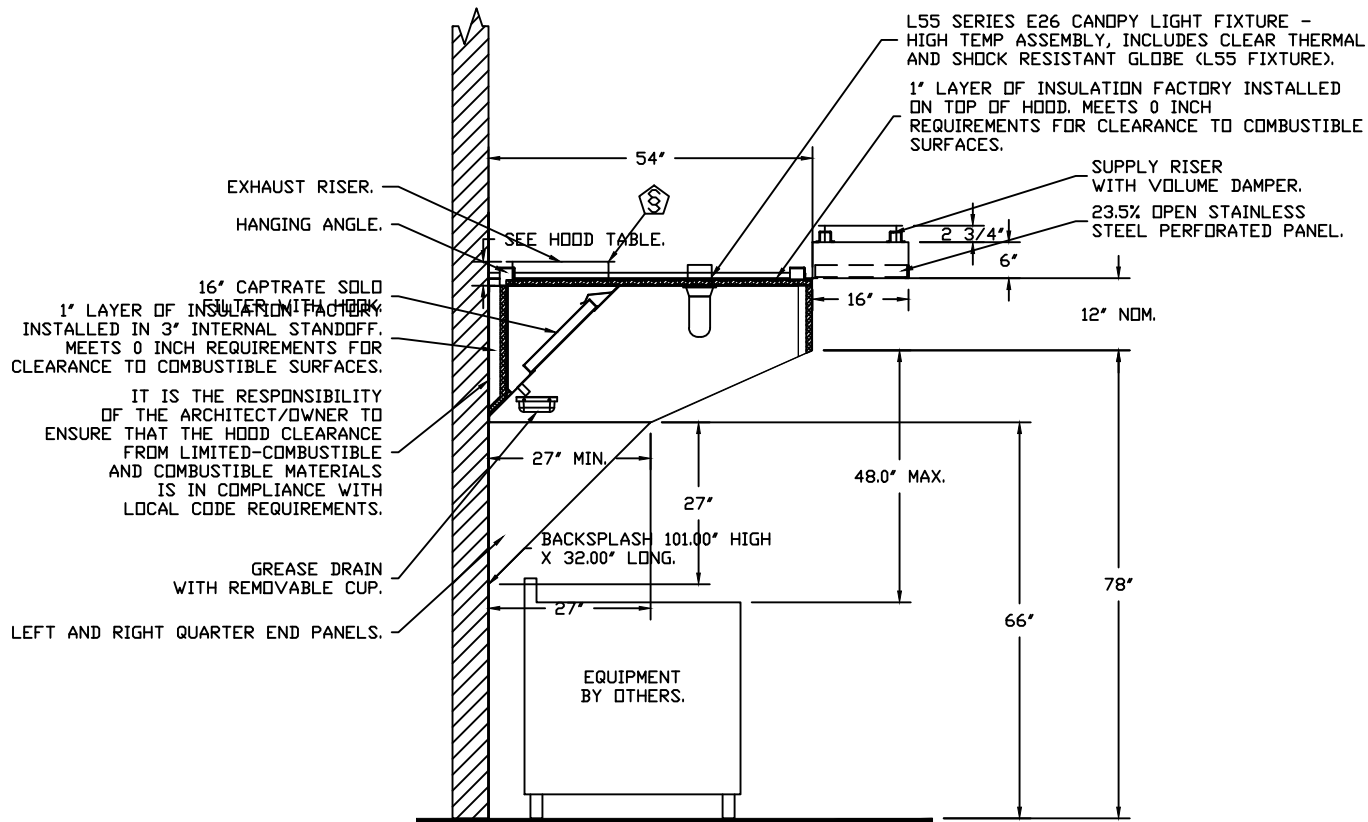


PLAN VIEW - HOOD #1 (HOOD 1)
 14' 0.00" LONG 5412SND-2-PSP-F
 NOTE: ADDITIONAL HANGING ANGLES PROVIDED FOR HOODS 12' AND LONGER.



CAPTIVEAIR

JOB Wildfire Brewery	
LOCATION Wilder, KY, 41071	
DATE 1/26/2022	JOB # 5148796
DWG # 2	DRAWN BY jcirilli
REV.	SCALE 3/8" = 1'-0"

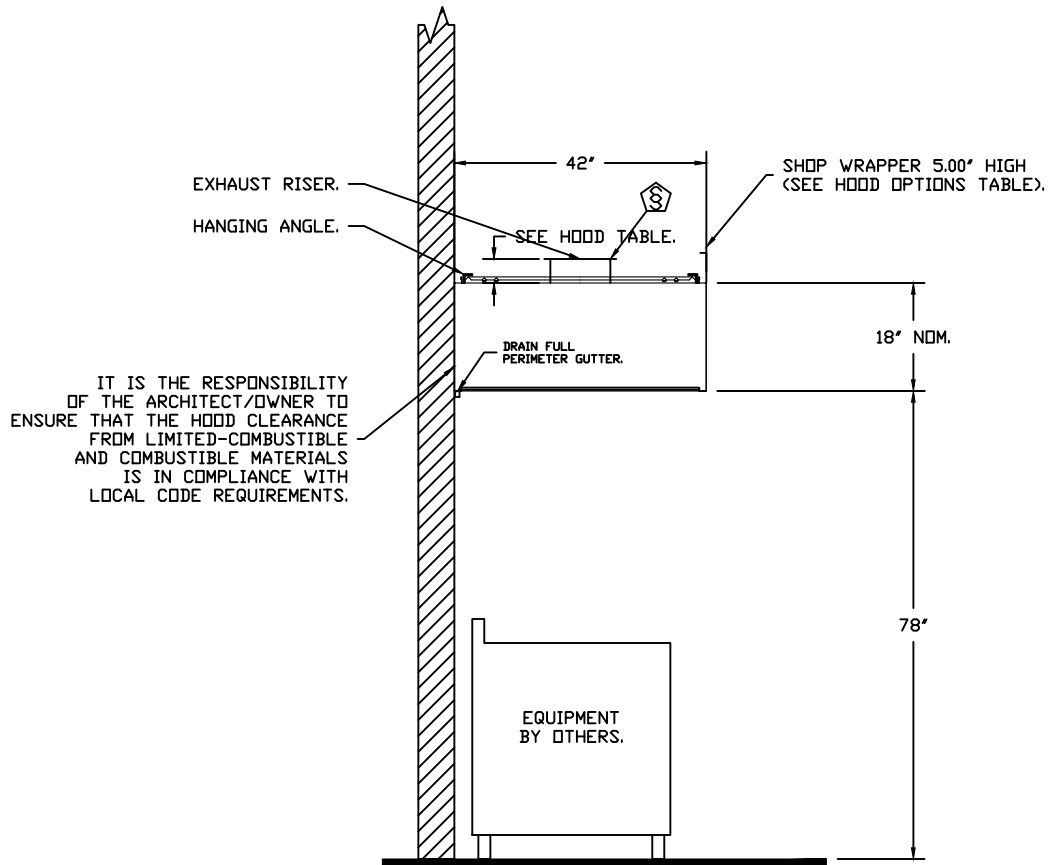


SECTION VIEW - MODEL 5412SND-2-PSP-F
HOOD - #1 (HOOD 1)



CAPTIVEAIR

JOB Wildfire Brewery	
LOCATION Wilder, KY, 41071	
DATE 1/26/2022	JOB # 5148796
DWG # 3	DRAWN BY jcirilli
REV.	SCALE 3/8" = 1'-0"



SECTION VIEW - MODEL 4218VHB-G
HOOD - #2 (DISH)



CAPTIVEAIR

JOB Wildfire Brewery	
LOCATION Wilder, KY, 41071	
DATE 1/26/2022	JOB # 5148796
DWG # 4	DRAWN BY jcirilli
REV.	SCALE 3/8" = 1'-0"

COILS -- JOB#5148796

FAN UNIT NO	TAG	COIL TYPE	DESIGN CFM	COOLING										
				ENTERING DB TEMP	ENTERING WB TEMP	LEAVING DB TEMP	LEAVING WB TEMP	ENTERING FLUID TEMP	LEAVING FLUID TEMP	FLUID FLOW RATE	PERCENT GLYCOL	TOTAL CAPACITY	SENSIBLE CAPACITY	LATENT CAPACITY
2	KMUA	DX	2125	90.0°F	74.0°F	73.6°F	66.8°F	---	---	---	---	55.3 MBH	36.0 MBH	19.3 MBH
HEATING														
ENTERING DB TEMP	LEAVING DB TEMP	ENTERING FLUID TEMP	LEAVING FLUID TEMP	FLUID FLOW RATE	PERCENT GLYCOL	STEAM PRESSURE	TOTAL CAPACITY	SENSIBLE CAPACITY						
---	---	---	---	---	---	---	---	---						

GAS FIRED MAKE-UP AIR UNIT(S)

FAN UNIT NO	TAG	INPUT BTUs	OUTPUT BTUs	TEMP RISE	REQUIRED INPUT GAS PRESSURE	GAS TYPE	BURNER EFFICIENCY(%)
2	KMUA	123550	113666	50°F	7 IN. W.C. - 14 IN. W.C.	NATURAL	92

EXHAUST FAN INFORMATION -- JOB#5148796

FAN UNIT NO	TAG	QTY	FAN UNIT MODEL #	MANUFACTURER	CFM	ESP	RPM	MOTOR ENCL	HP	BHP	PHASE	VOLT	FLA	DISCHARGE VELOCITY	WEIGHT (LBS)	SDNES
1	EF1	1	USBI18DD-RM	CAPTIVEAIRE	2884	1.500	1280	ODP,PREMIUM	2.000	1.1970	3	208	6.1	1478 FPM	402	18.4
3	EF DISH	1	DU33HFA	CAPTIVEAIRE	525	0.500	1196	TEAD-ECM	0.333	0.1040	1	115	4.3	260 FPM	63	10

CONDENSER DETAILS

FAN UNIT NO	TAG	FAN UNIT MODEL #	CONDENSER NO	TONNAGE	VOLTAGE	PHASE	FREQUENCY	MCA	RLA	MAX FUSE SIZE	MIN WIRE SIZE	SEER
2	KMUA	A1-D.500-15D-MPU	1	2.5	208-230	3 PHASE	60 HZ	11.2 AMPS	9.07 AMPS	20 AMPS	14 AWG	14
			2	2.5	208-230	3 PHASE	60 HZ	11.2 AMPS	9.07 AMPS	20 AMPS	14 AWG	14

MUA FAN INFORMATION -- JOB#5148796

FAN UNIT NO	TAG	QTY	FAN UNIT MODEL #	BLOWER	HOUSING	MIN CFM	DESIGN CFM	ESP	RPM	MOTOR ENCL	HP	BHP	PHASE	VOLT	FLA	MCA	MDCP	WEIGHT (LBS)	SDNES
2	KMUA	1	A1-D.500-15D-MPU	15MF-1-MDD	A1-D.500	1800	2125	0.300	2230	ODP,PREMIUM	3.000	1.7790	3	208	8.6	10.8A	15A	1066	24

FAN ACCESSORIES

FAN UNIT NO	TAG	EXHAUST			SUPPLY			
		GREASE CUP	GRAVITY DAMPER	WALL MOUNT	SIDE DISCHARGE	GRAVITY DAMPER	MOTORIZED DAMPER	WALL MOUNT
1	EF1	YES						
2	KMUA				YES		YES	
3	EF DISH							

CURB ASSEMBLIES

NO	DN FAN	TAG	WEIGHT	ITEM	SIZE
1	# 1	EF1	25 LBS	RAIL	4.000"W X 48.000"L X 10.000"H 2.000:12.000 PITCH ALONG WIDTH, RIGHT COMES AS A SET OF 2.
2	# 2		83 LBS	RAIL	6.000"W X 21.000"L X 12.000"H LDW.
2	# 2	KMUA	83 LBS	CURB	21.000"W X 71.000"L X 12.000"H ALONG LENGTH, LDW INSULATED.
3	# 3	EF DISH	24 LBS	CURB	19.500"W X 19.500"L X 18.000"H 2.000:12.000 PITCH ALONG LENGTH, RIGHT HINGED.
4		EXHAUST SHAFT	22 LBS	CURB	24.000"W X 24.000"L X 20.000"H 2.000:12.000 PITCH ALONG LENGTH, RIGHT VENTED.
5		SUPPLY SHAFT	31 LBS	CURB	24.000"W X 24.000"L X 16.000"H 2.000:12.000 PITCH ALONG LENGTH, RIGHT INSULATED.
6		SUPPORT LEGS	10 LBS	RAIL	4.000"W X 4.000"L X 36.000"H ALONG LENGTH, RIGHT.
7		CONDENSERS	15 LBS	RAIL	4.000"W X 24.000"L X 12.000"H ALONG LENGTH, RIGHT.

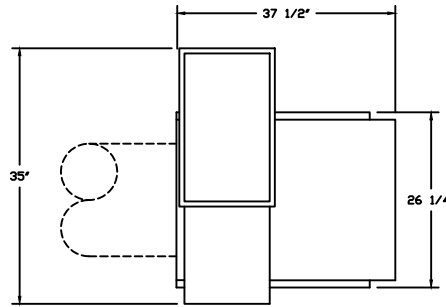
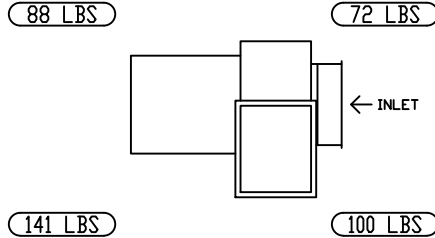


JOB Wildfire Brewery	
LOCATION Wilder, KY, 41071	
DATE 1/26/2022	JOB # 5148796
DWG # 5	DRAWN BY jcirilli
REV.	SCALE 3/8" = 1'-0"

FAN #1 USB118DD-RM - EXHAUST FAN (EF1)

CORNER WEIGHTS ARE CALCULATED BASED ON VERTICAL DISCHARGE. SUPPORT DUCT PROPERLY BEFORE FAN TO ENSURE CORNER WEIGHTS ARE NOT AFFECTED.

UNIT PLAN VIEW CORNER WEIGHTS:



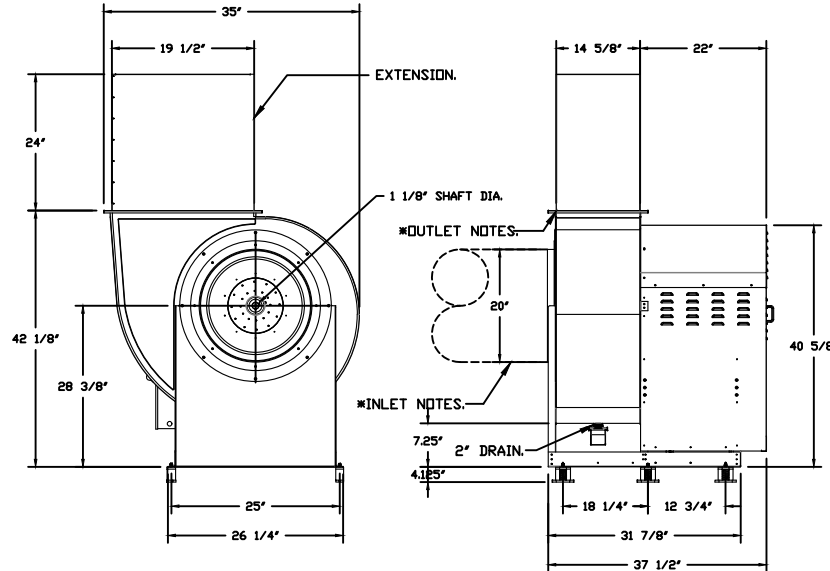
TOP VIEW

FEATURES:

- ROOF MOUNTED FANS.
- UL705.
- UL762 AND ULC-S645 (RESTAURANT MODEL).
- HIGH HEAT OPERATION DIRECT DRIVE 350°F (176°C).
- HEAT SLINGER.
- NEMA 3R SAFETY DISCONNECT SWITCH.
- GREASE CLASSIFICATION TESTING.
- 2" DRAIN.
- MOTOR WEATHER COVER.
- FULLY SEALED SCROLL HOUSING.
- SCROLL ACCESS DOOR.
- FLANGE 1 1/4".

OPTIONS

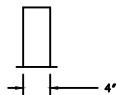
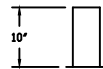
BI18 - INLET SERVICE DUCT CONNECTION, USED TO CONNECT TO STANDARD 20" GREASE DUCT OR FIELD WELDED DUCT. INCLUDES (2) 7" RISERS BOLTED TO STANDARD INLET RISER. UTILITY SET GREASE CUP.
 BI18 - 24" DISCHARGE EXTENSION.
 BI - DISCHARGE ORIENTATION VERTICAL UPPER LEFT - CW INLET SIDE.
 BI18 - INLET CONNECTION STANDARD 20" FLANGED GREASE DUCT.
 UTILITY SET - SPRING VIBRATION ISOLATORS - BI18 / EQUIVALENT SIZED UTILITY SET - INDOOR/OUTDOOR USE. 2 YEAR PARTS WARRANTY.



SIDE VIEW

(6) ISOLATORS = USB118 THRU 36.

FRONT VIEW



SUPPORT RAILS.

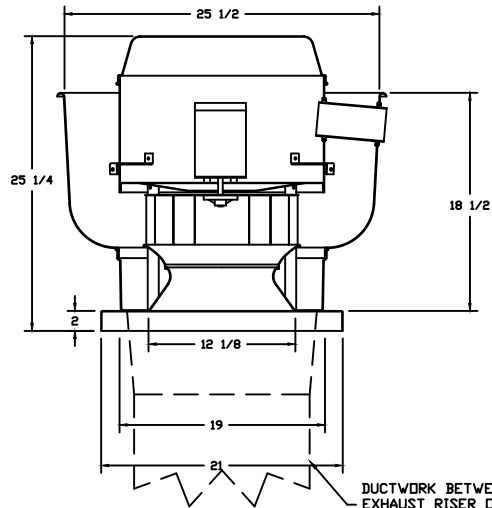
* INLET/OUTLET NOTES:
 LENGTH OF THE STRAIGHT DUCT ON THE INLET AND OUTLET TO BE 3 TIMES THE EQUIVALENT DUCT DIAMETER BEFORE CONNECTING TO ANY FITTINGS SUCH AS ELBOWS TO AVOID SYSTEM EFFECT.

NORMAL TEMPERATURE TEST DIRECT DRIVE EXHAUST FAN MUST OPERATE CONTINUOUSLY WHILE EXHAUSTING AIR AT 350°F (176°C) UNTIL ALL FAN PARTS HAVE REACHED THERMAL EQUILIBRIUM, AND WITHOUT ANY DETERIORATING EFFECTS TO THE FAN WHICH WOULD CAUSE UNSAFE OPERATION.



JOB Wildfire Brewery	
LOCATION Wilder, KY, 41071	
DATE 1/26/2022	JOB # 5148796
DWG # 6	DRAWN BY jcirilli
REV.	SCALE 3/8" = 1'-0"

FAN #3 DU33HFA - EXHAUST FAN (FF DISH)



FEATURES:

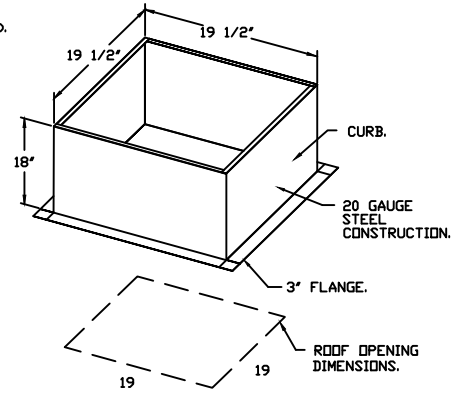
- DIRECT DRIVE CONSTRUCTION (NO BELTS/PULLEYS).
- ROOF MOUNTED FANS.
- RESTAURANT MODEL.
- UL705
- VARIABLE SPEED CONTROL.
- INTERNAL WIRING.
- THERMAL OVERLOAD PROTECTION (SINGLE PHASE).
- HIGH HEAT OPERATION 300°F (149°C).
- NEMA 3R SAFETY DISCONNECT SWITCH.

NORMAL TEMPERATURE TEST

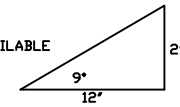
EXHAUST FAN MUST OPERATE CONTINUOUSLY WHILE EXHAUSTING AIR AT 300°F (149°C) UNTIL ALL FAN PARTS HAVE REACHED THERMAL EQUILIBRIUM, AND WITHOUT ANY DETERIORATING EFFECTS TO THE FAN WHICH WOULD CAUSE UNSAFE OPERATION.

OPTIONS

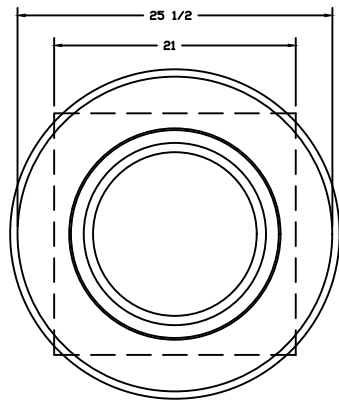
ECM WIRING PACKAGE - MANUAL OR 0-10VDC REFERENCE SPEED CONTROL (TELCO MOTOR), CCW ROTATION.
2 YEAR PARTS WARRANTY.



PITCHED CURBS ARE AVAILABLE FOR PITCHED ROOFS.

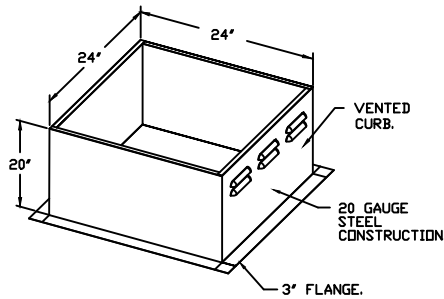


SPECIFY PITCH:
EXAMPLE: 7/12 PITCH = 30° SLOPE.

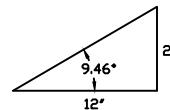
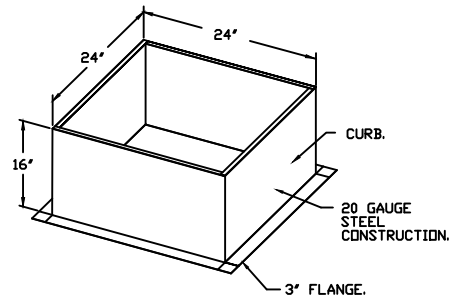


TOP VIEW

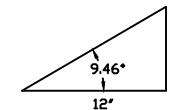
CURB #4 (EXHAUST SHAFT) CRB24X20E



CURB #5 (SUPPLY SHAFT) CRB24.0X16H



2"/12" PITCH = 9.46° SLOPE



2"/12" PITCH = 9.46° SLOPE



CAPTIVEAIR

JOB Wildfire Brewery	
LOCATION Wilder, KY, 41071	
DATE 1/26/2022	JOB # 5148796
DWG # 7	DRAWN BY jcirilli
REV.	SCALE 3/8" = 1'-0"

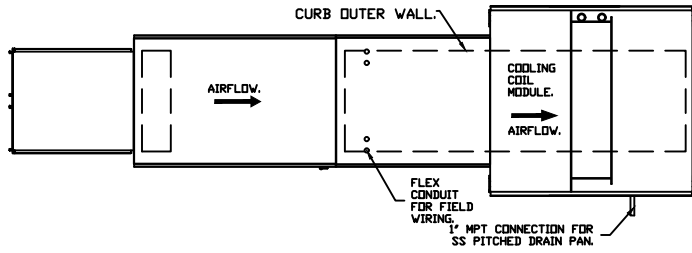
SUPPLY SIDE HEATER INFORMATION:

WINTER TEMPERATURE = 12°F. TEMP. RISE = 50°F.
 BTUs CALCULATED OFF ACTUAL AIR DENSITY.
 OUTPUT BTUs AT ALTITUDE OF 0.0 FT. = 116340.
 INPUT BTUs AT ALTITUDE OF 0.0 FT. = 126456.
 OUTPUT BTUs AT ALTITUDE OF 642 FT. = 113666.
 INPUT BTUs AT ALTITUDE OF 642 FT. = 123550.

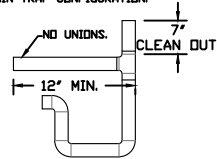
FAN #2 A1-D.500-15D-MPU - HEATER (KMUA)

1. DIRECT GAS FIRED HEATED MAKE UP AIR UNIT WITH 15' MIXED FLOW DIRECT DRIVE FAN.
2. INTAKE HOOD WITH EZ FILTERS-LOW CFM.
3. SIDE DISCHARGE - AIR FLOW LEFT -> RIGHT.
4. GAS PRESSURE GAUGE, 0-35", 2.5" DIAMETER, 1/4" THREAD SIZE.
5. GAS PRESSURE GAUGE, -5 TO +15 INCHES WC, 2.5" DIAMETER, 1/4" THREAD SIZE.
6. LOW FIRE START. ALLOWS THE BURNER CIRCUIT TO ENERGIZE WHEN THE MODULATION CONTROL IS IN A LOW FIRE POSITION.
7. MOTORIZED BACK DRAFT DAMPER 16" X 18" FOR SIZE 1 STANDARD & MODULAR HEATER UNITS W/EXTENDED SHAFT, STANDARD GALVANIZED CONSTRUCTION, 3/4" REAR FLANGE, LOW LEAKAGE, TFB120S ACTUATOR INCLUDED.
8. 5 TON, DUAL CIRCUIT (2.5/2.5) MODULAR PACKAGED COOLING OPTION FOR SIZE 1 DF/EH MODULAR PACKAGED UNIT. INCLUDES CONDENSER, DX COIL, FILTER/DRYER KIT, THERMAL EXPANSION VALVE, R410A REFRIGERANT, AND REFRIGERANT PIPING. (1,800 TO 3,000 CFM) WHEN ORDERED WITH OPPOSITE AIRFLOW CONDENSERS ACCESS AND COIL PIPING WILL REMAIN IN STANDARD POSITION. DRAIN AND SLEDS WILL MOVE TO THE OPPOSITE SIDE. ANY OTHER CHANGE WILL REQUIRE CLI. CONDENSERS REQUIRE SEPARATE 208V, 3 PHASE POWER SUPPLY UNLESS ORDERED WITH SINGLE POINT CONNECTION. COIL = 2EZ0902ME.
9. DX COOLING INTAKE AIR THERMOSTAT AND RELAYS MOUNTED IN UNIT - SET POINT FOR THERMOSTAT SHOULD BE 85°F.
10. SHIP CONDENSERS LOOSE. THE REFRIGERATION LINES WILL NEED TO BE STUBBED OUT 12 INCHES. THE SUCTION LINES NEEDS TO BE INSULATED INSIDE THE COIL MODULE. ROTARY DISCONNECT SHOULD NOT BE INSTALLED ON THE POST, BLANK POST SHOULD BE USED IN PLACE.
11. MOUNT MOTOR AND CONTROLS ON OPPOSITE SIDE OF HEATER.
12. SEPARATE 120VAC WIRING PACKAGE FOR MAKE-UP AIR UNITS. OPTION MUST BE SELECTED WHEN MOUNTING WFD IN PREWIRE PANEL OR WITH DCV PACKAGE. PROVIDES SEPARATE 120VAC INPUT TO SUPPLY FAN. THIS 120V SIGNAL MUST BE RUN BY ELECTRICIAN FROM DCV TO MUA SWITCH.
13. HINGED DOUBLE WALL INSULATED DDDR ASSEMBLY (BURNER/BLOWER/MPU SECTION).
14. 2 YEAR PARTS WARRANTY

*NOTE: SUPPLY DUCT MUST BE INSTALLED TO MEET SMACNA STANDARDS. A MINIMUM STRAIGHT DUCT LENGTH MUST BE MAINTAINED DOWNSTREAM OF UNIT DISCHARGE AS OUTLINED IN AMCA PUBLICATION 201. WHEN USING RECTANGULAR DUCTWORK, ELBOWS MUST BE RADIUS THROAT, RADIUS BACK WITH TURNING VANES. FLEXIBLE DUCTWORK AND SQUARE THROAT/SQUARE BACK ELBOWS SHOULD NOT BE USED. ANY TRANSITION AND/OR TURNS IN THE DUCTWORK WILL CAUSE SYSTEM EFFECT. SYSTEM EFFECT WILL DRASTICALLY INCREASE STATIC PRESSURE AND REDUCE AIRFLOW, DO NOT RELY ON UNIT TO SUPPORT DUCT IN ANY WAY. FAILURE TO PROPERLY SIZE DUCTWORK MAY CAUSE SYSTEM EFFECTS AND REDUCE PERFORMANCE OF THE EQUIPMENT. SUGGESTED STRAIGHT DUCT SIZE IS 20" x 20".



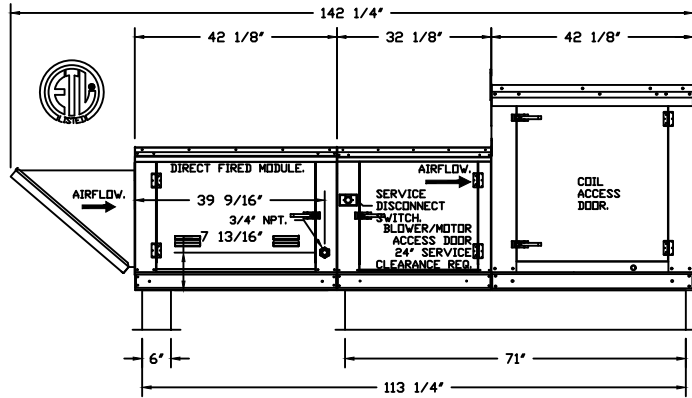
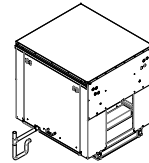
RECOMMENDED COOLING COIL DRAIN TRAP CONFIGURATION.



NOTES:

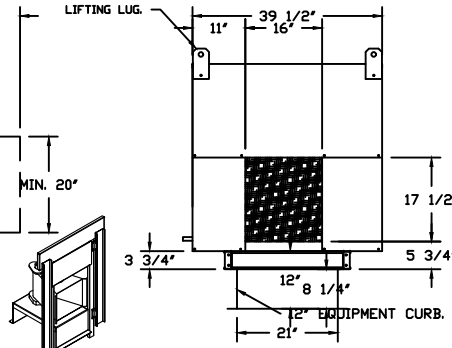
- 1) 1" DIAMETER PVC PIPE ONLY
- 2) USE ONLY LOW PROFILE COUPLINGS.
- 3) ADD CLEAN OUT AS SHOWN.

TYPICAL DRAIN TRAP INSTALL



MINIMUM STRAIGHT DUCT PER AMCA*

LIFTING LUG.

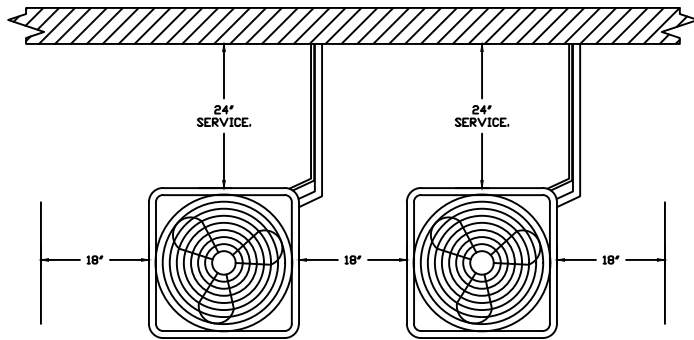


DIRECT FIRED GFF PROFILE PLATE ASSEMBLY



CAPTIVEAIR

JOB Wildfire Brewery	
LOCATION Wilder, KY, 41071	
DATE 1/26/2022	JOB # 5148796
DWG # 8	DRAWN BY jcrilli
REV.	SCALE 3/8" = 1'-0"



CONDENSER CLEARANCES

48" CLEARANCE REQUIRED ABOVE CONDENSERS.
 (NOTE: **CONDENSERS SHOWN HERE ARE NOT DRAWN AT SCALE).

Installation Wiring		JOB	5148796 - Wildfire Brewery												
DRAWING NUMBER		SHIP DATE	MODEL												
RP5148796-2		1/26/2022	AI-D-500-180-MPU												
120 V 1 PH.	240 V 1 PH.	208/460/600 V 3 PH.	Installed Options DCV Connections												
Gal-Flex conduit (in unit) Disconnect Switch Factory wiring Customer supplied wiring BK, VH, GR	Gal-Flex conduit (in unit) Disconnect Switch Factory wiring Customer supplied wiring BK, RD, GR	Gal-Flex conduit (in unit) Disconnect Switch Factory wiring Customer supplied wiring BK, BK, BK, RD, VH, GR													
208/230V 3PH	POWER FROM DEDICATED BREAKER														
Gal-Flex conduit (in unit) Disconnect Switch Factory wiring Customer supplied wiring CONDENSER 1 CONDENSER 2 wiring BL, BL, BL, RD, RD, RD, GR	DO NOT CONNECT CONDENSER POWER DROPS TO KITCHEN CONTROL PACKAGE STARTERS OR VFDS														
<p>See above details:</p> <p>03 IN HEATER TO IL1A IN DCV 07 IN HEATER TO IL1B IN DCV WIRE TO BRK2 DCV</p> <p>Condenser Connection(s) See Notes Above</p>															
<p>NOTES</p> <p>WIRE COLOR</p> <table border="0"> <tr> <td>BK - BLACK</td> <td>YV - YELLOW</td> </tr> <tr> <td>BL - BLUE</td> <td>GR - GREEN</td> </tr> <tr> <td>BR - BROWN</td> <td>GY - GRAY</td> </tr> <tr> <td>OR - ORANGE</td> <td>PR - PURPLE</td> </tr> <tr> <td>RD - RED</td> <td>PK - PINK</td> </tr> <tr> <td>WH - WHITE</td> <td></td> </tr> </table>				BK - BLACK	YV - YELLOW	BL - BLUE	GR - GREEN	BR - BROWN	GY - GRAY	OR - ORANGE	PR - PURPLE	RD - RED	PK - PINK	WH - WHITE	
BK - BLACK	YV - YELLOW														
BL - BLUE	GR - GREEN														
BR - BROWN	GY - GRAY														
OR - ORANGE	PR - PURPLE														
RD - RED	PK - PINK														
WH - WHITE															

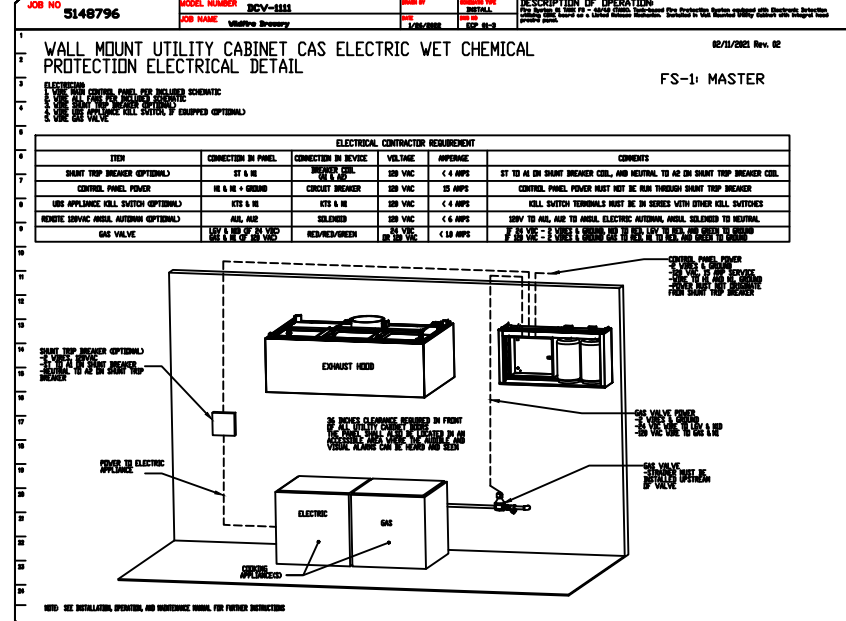
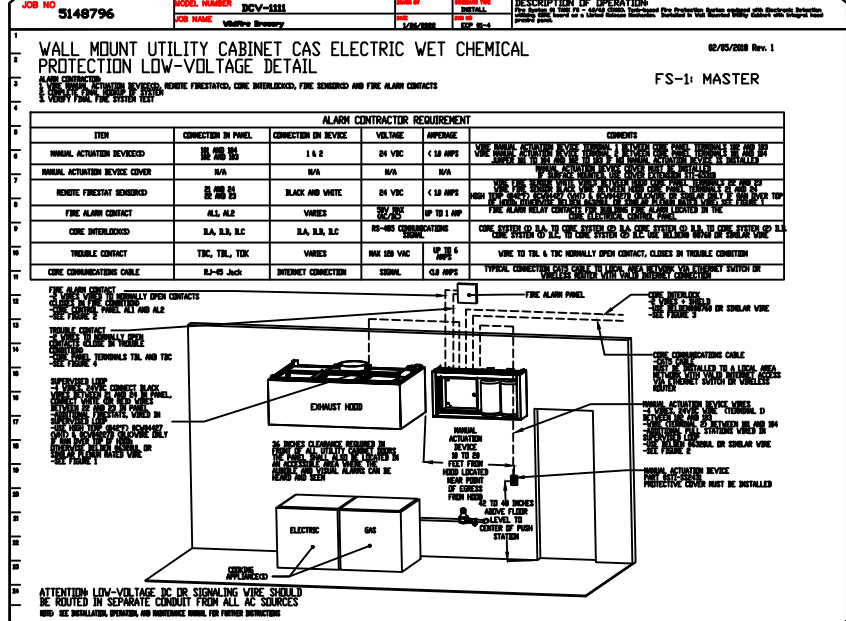
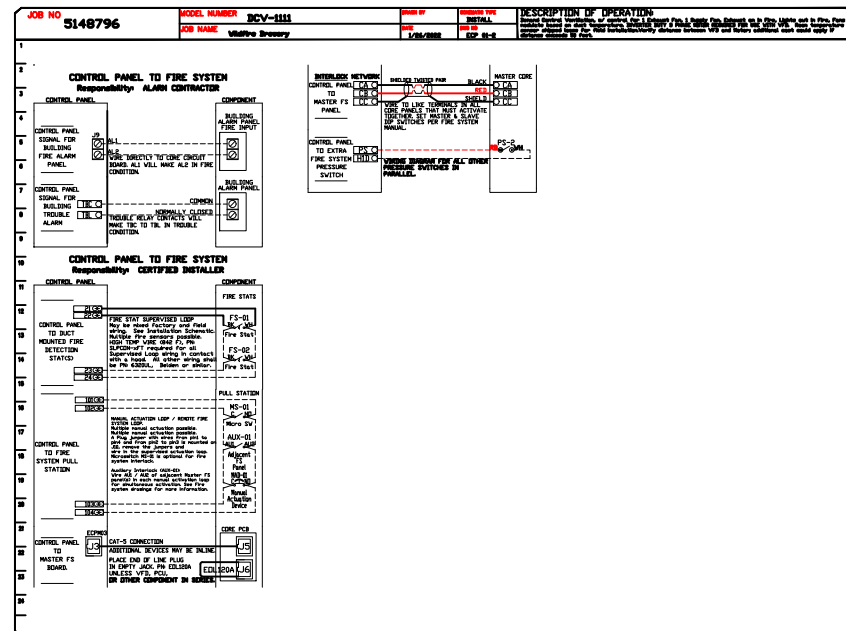
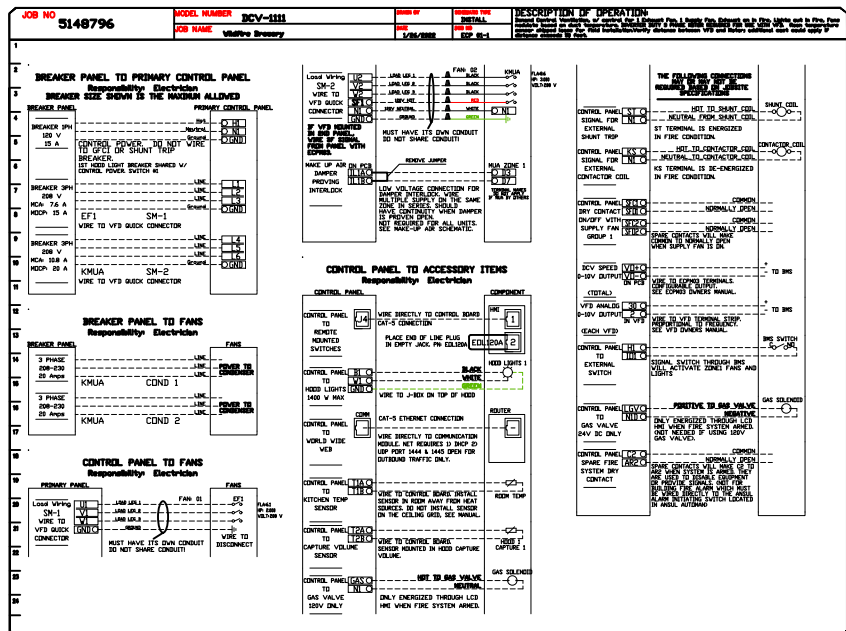


CAPTIVEAIRE

JOB Wildfire Brewery	
LOCATION Wilder, KY, 41071	
DATE 1/26/2022	JOB # 5148796
DWG # 11	DRAWN BY jcirilli
REV.	SCALE 3/8" = 1'-0"

ELECTRICAL PACKAGE - JOB#5148796

NO	TAG	PACKAGE #	LOCATION	SWITCHES		OPTIM	FANS CONTROLLED					
				LOCATION	QUANTITY		FAN TAG	TYPE	HP	VOLTS	FLA	
1	ECF 1	DCV-1111	WALL UTILITY CABINET RIGHT	RIGHT SIDE OF HOOD HOOD # 1	1 LIGHT 1 FAN	SMART CONTROLS DCV	KNHA	EXHAUST	3	2,000	208	6.1
								SUPPLY	3	3,000	208	8.6



JOB Wildfire Brewery	
LOCATION Wilder, KY, 41071	
DATE 1/26/2022	JOB # 5148796
DWG # 12	DRAWN BY jcrilli
REV.	SCALE 1/4" = 1'-0"