

QTY 4 BRACKETS
WB611

QTY: 2
TAG: AC-3,4

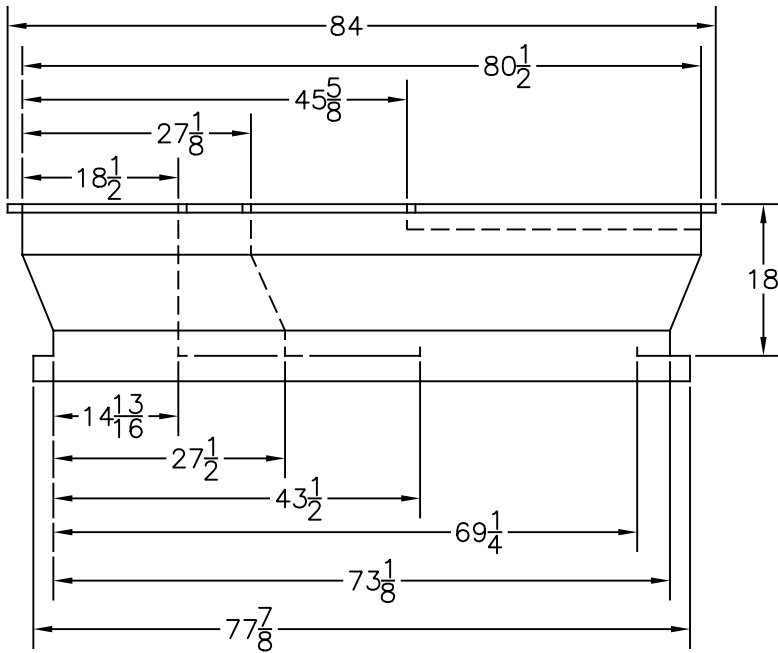
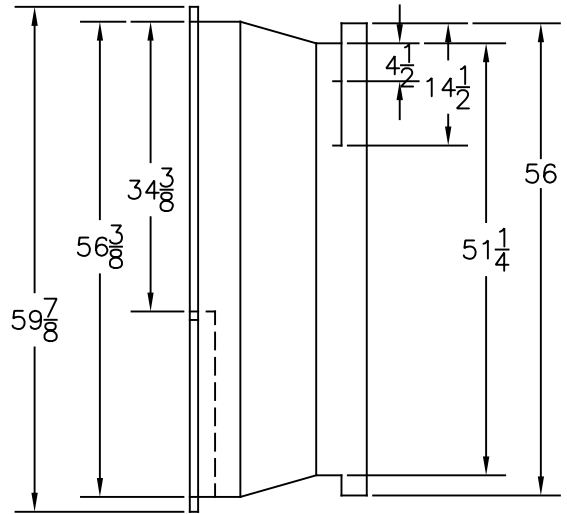
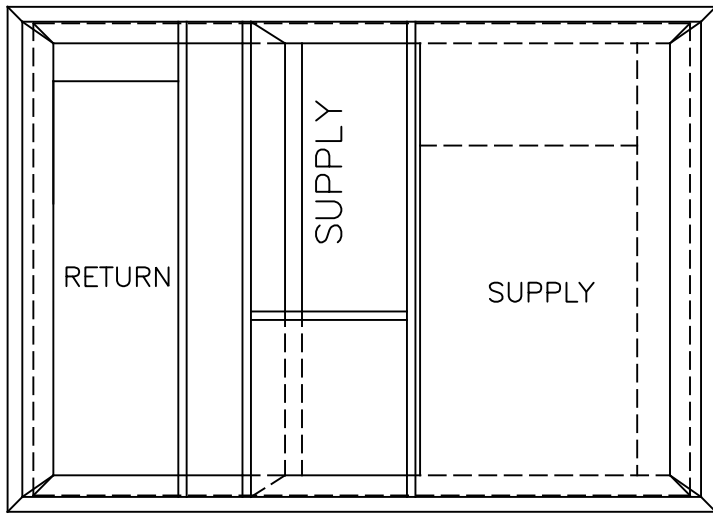
FEATURES:

- 14 GAUGE GALVANIZED STEEL WALLS
- 18 GAUGE GALVANIZED STEEL INTERNAL COMPONENTS
- FULLY WELDED CORNERS
- 1" DUCT LINER ALL SURFACES
- NEOPRENE GASKET

LEAD TIME QUOTED BEGINS AFTER APPROVED COPY OF THIS DRAWING IS RECEIVED BY AES.

APPROVED: _____
DATE: _____

AES ORDER NO:	JOB: GA374	
FILENAME: AA40-TR33.DWG	LOCATION:	
DRAWN BY: PLED	DATE: 10/2/20	SHEET 1 OF 1



QTY: 1
TAG: AC-6

FEATURES:

- 14 GAUGE GALVANIZED STEEL WALLS
- 18 GAUGE GALVANIZED STEEL INTERNAL COMPONENTS
- FULLY WELDED CORNERS
- 1" DUCT LINER ALL SURFACES
- NEOPRENE GASKET

LEAD TIME QUOTED BEGINS AFTER APPROVED COPY OF THIS DRAWING IS RECEIVED BY AES.

APPROVED: _____
DATE: _____

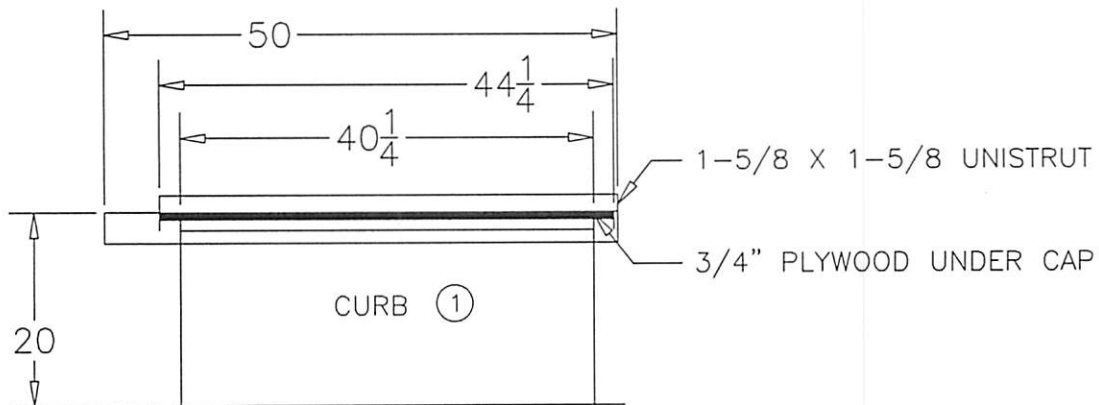
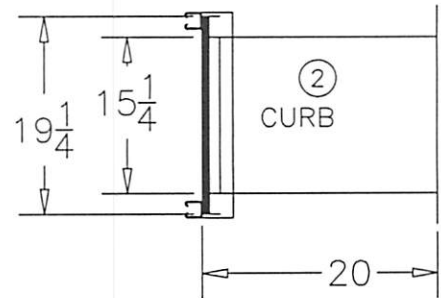
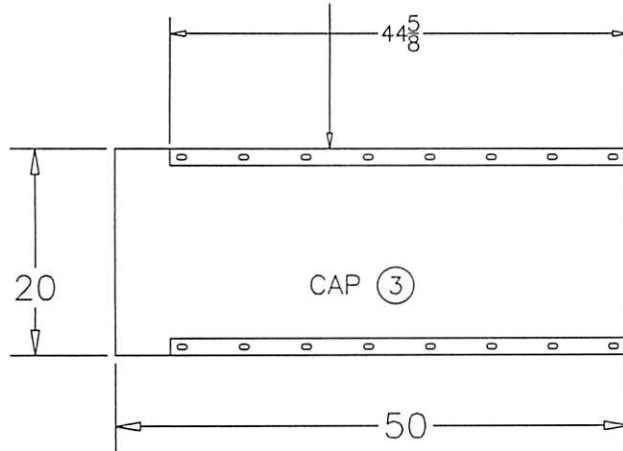
AES ORDER NO:	JOB: GA374	
FILENAME: AA63-TR34.DWG	LOCATION:	
DRAWN BY: PLED	DATE: 8/29/22	SHEET 1 OF 1

AES 5 / AES5 CARRIER SPLIT SYSTEM

PNET: 42486



44-5/8 X 1-5/8 X 1-5/8 UNISTRUT
 WELDED TO CURB CAP EDGE AS SHOWN (BOTH SIDES)



QTY. 1
 TAG: CU-7

FEATURES:

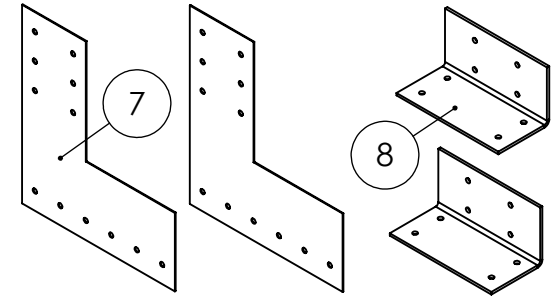
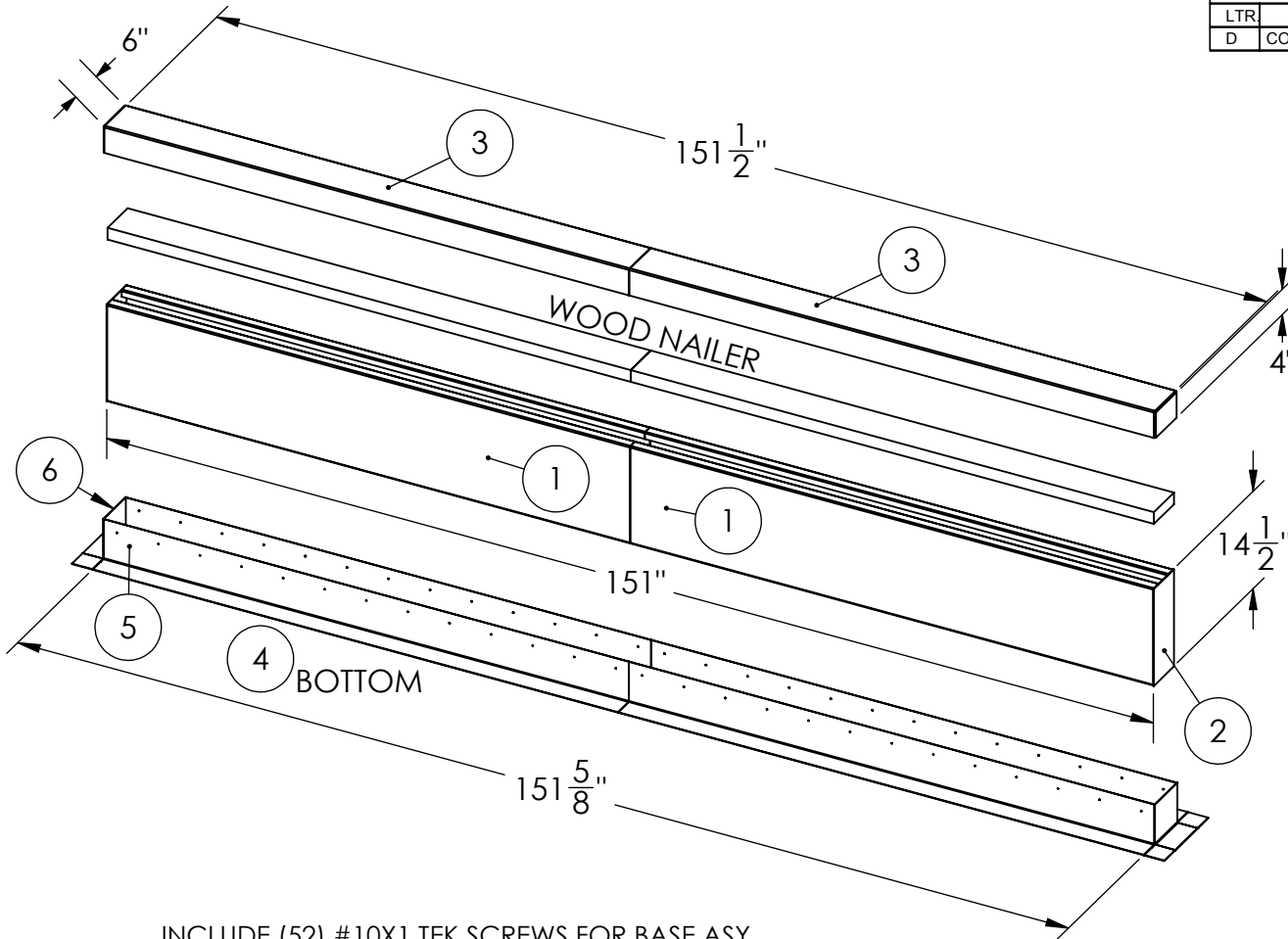
- 18 GAUGE GALVANIZED STEEL CONSTRUCTION
- FULL HEIGHT WELDED CORNERS
- 1X1 ANGLE IN CORNERS
- PRESSURE TREATED 1X4 WOOD NAILER
- 3/4" PLYWOOD UNDER CAP

LEAD TIME QUOTED BEGINS AFTER APPROVED COPY OF THIS DRAWING IS RECEIVED BY AES

APPROVED: _____
 DATE: _____

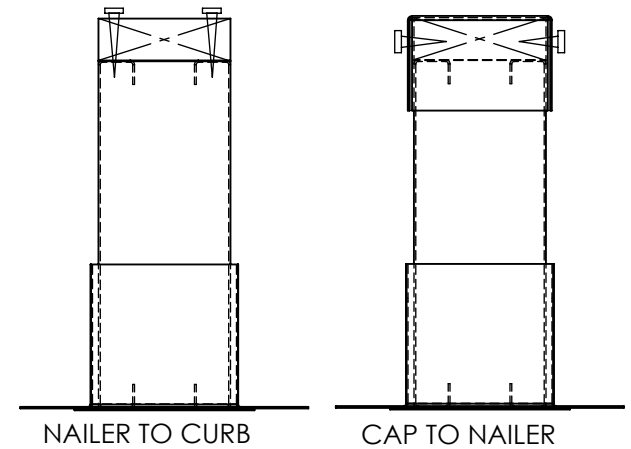
AES ORDER NO: <input type="checkbox"/>	JOB NAME: GA374
FILENAME: AES5_CARRIERSPLIT	LOCATION:
DRAWN BY: JOE	DATE: 7/8/11

REVISIONS			
LTR	DESCRIPTION	DATE	APPD.
D	CONVERTED FROM CAD TO SOLIDWORKS	5/08/15	LEE



ATTACH (2) 10 GA BRKTS AND (2) 18 GA STRAPS TO CURB CAP BEFORE SHIPPING.

FASTENERS @ 48" CENTERS



INCLUDE (52) #10X1 TEK SCREWS FOR BASE ASY.
INCLUDE (48) #12X1 1/2 TEK SCREWS FOR BRACKETS.

- FEATURES:
- 14 GA CONSTRUCTION
 - 1 1/2" FIBERGLASS INSULATION
 - 14 GA BASE PLATE
 - 2 X 6 WOOD NAILER

REFERENCE REFRIGERATION SCHEDULE

QTY: 4

AC-1,2

- APPROVED AS SHOWN
- PROCEED WITH CORRECTIONS NOTED
- REVISE AND RESUBMIT
- REJECTED

SIGNED: _____

LEAD TIME QUOTED BEGINS AFTER APPROVED COPY OF THIS DRAWING IS RECEIVED BY AES.

DATE: _____



AES ORDER #: GA374

JOB NAME:

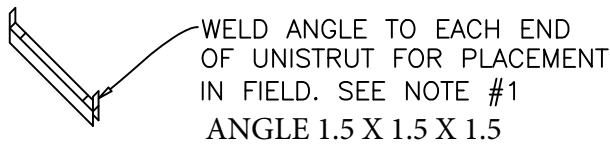
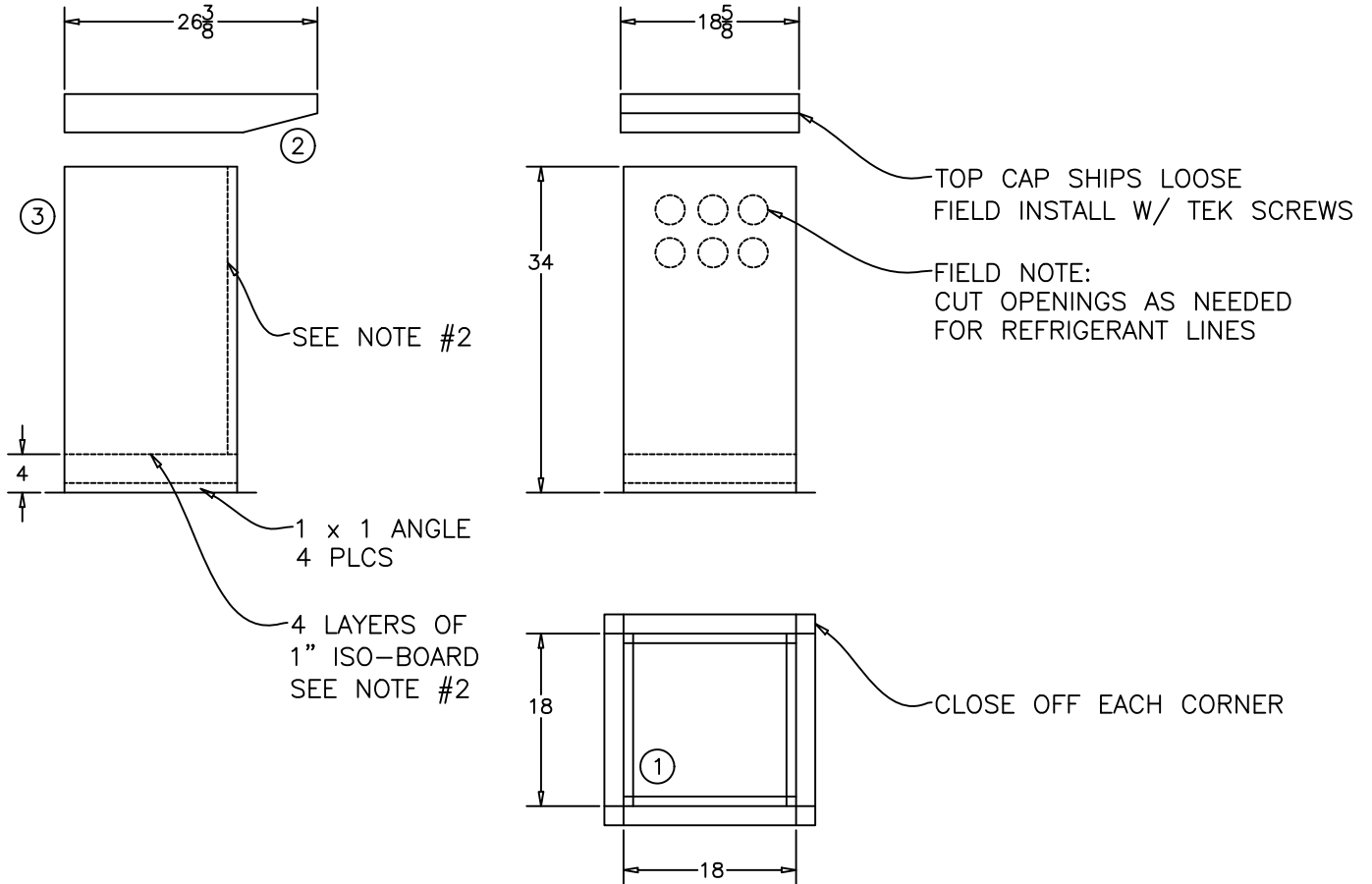
LOCATION:

DRAWN BY: LEE

DWG DATE: 5/08/15

SHEET: 1 of 3

SHEETMETAL PIPE BOX - PNET 060-42492



SHOP NOTE:
 1. INCLUDE 18" OF UNISTRUT CHANNEL, WELD ANGLE TO EACH END. SHIP LOOSE.
 2. FOUR LAYERS OF 1" ISO-BOARD ON BOTTOM. THEN ONE LAYER ON THE INSIDE OF FRONT WALL.

QTY: 2
AC-1,2

FEATURES:

- 20 GA GALVANIZED CONSTRUCTION
- UNISTRUT CHANNEL PROVIDED FOR ATTACHMENT OF PIPE CLAMPS
- 18 GA REMOVEABLE TOP CAP

AES ORDER NO:	JOB NAME: GA374
FILENAME: PIPE BOX - PNET 42492	LOCATION:
DRAWN BY: LEE	DATE: 1/12/11