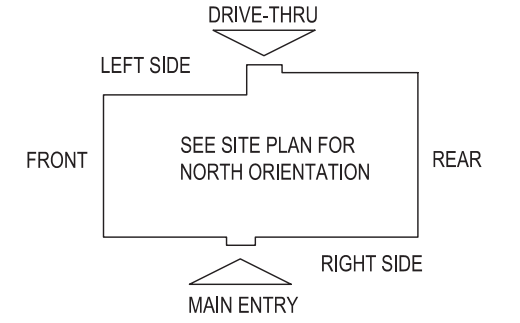


E5 HVAC PLAN
SCALE: 1/4" = 1'-0"



NOTE: ALL DUCTWORK TO BE LOCATED IN TRUSS SPACE WHERE POSSIBLE. SEE FRAMING PLAN.
HVAC SETPOINTS RECOMMENDED BY CORPORATE OPERATIONAL GUIDELINES:
1. DINING: HEATING 70 DEGF. COOLING 72 DEGF.
2. KITCHEN: HEATING 68 DEGF. COOLING 74 DEGF

SUPPLY DUCTWORK SIZING TABLE*				
SIZE	ROUND		RECTANGULAR	
	CFM RANGE	SIZE	CFM RANGE	SIZE
8"	115 - 235	8"x8"	205 - 300	
10"	240 - 435	10"x8"	305 - 400	
12"	440 - 710	10"x10"	405 - 550	
14"	715 - 1,070	12"x10"	555 - 700	
16"	1,075 - 1,530	12"x12"	705 - 900	
18"	1,535 - 2,090	14"x12"	905 - 1,105	
20"	2,095 - 2,760	16"x12"	1,110 - 1,315	
22"	2,765 - 3,550	18"x12"	1,320 - 1,520	
24"	3,555 - 4,470	20"x12"	1,525 - 1,740	
*CONTRACTOR MAY SUBSTITUTE RECTANGULAR FOR ROUND DUCTWORK ON MAIN RUNS AT THEIR DISCRETION. BRANCHES TO DIFFUSERS TO REMAIN ROUND.				
		22"x12"	1,745 - 1,950	
		24"x12"	1,955 - 2,170	
		26"x12"	2,175 - 2,400	
		28"x12"	2,405 - 2,610	
		30"x12"	2,615 - 2,840	
		32"x12"	2,845 - 3,070	
		34"x12"	3,075 - 3,290	
		36"x12"	3,295 - 3,520	
		36"x14"	3,525 - 4,420	

DIFFUSER, REGISTER, AND GRILLE SCHEDULE									
TAG	SERVICE	TYPE	MATERIAL	THROW	FACE	NECK	MOUNTING	MANUFACTURER/MODEL	Notes
SD-1	SUPPLY	LOUVERED	STEEL	4-WAY	24X24	SEE PLAN	LAY-IN	CARNES SFP24	2, 4
SD-2 - NOT USED									
SD-3	SUPPLY	LOUVERED	STEEL	3-WAY	SEE PLAN	SEE PLAN	SURFACE	CARNES SKSA	2, 4
SD-4	SUPPLY	LOUVERED	STEEL	4-WAY	12X12	SEE PLAN	SURFACE	CARNES SKSA	1, 2, 4
SD-5	SUPPLY	PERFORATED	STEEL	PERFORATED	24X24	SEE PLAN	LAY-IN	CARNES SPRB24	2, 4
RG-1	RETURN	SQUARE EGGRATE	ALUMINUM	N/A	24X24	22x22	LAY-IN	CARNES RAPMF	2, 3, 4
EG-1	RETURN	LOUVERED GRILLE	STEEL	N/A	12X12	SEE PLAN	SURFACE	CARNES RTLAH	1, 2, 4
TG-1	TRANSFER	LOUVERED GRILLE	STEEL	N/A	SEE PLAN	SEE PLAN	SURFACE	CARNES RTLAH	2, 4
DIFFUSER NOTES:									
1. PROVIDE w/ ADJUSTABLE OPPOSED BLADE DAMPER									
2. VERIFY ALL DIFFUSERS AND RETURN GRILLE COLORS WITH OWNER AND ARCHITECT									
3. PROVIDE w/ 22X22 PLENUM BOX.									
4. ALL DIFFUSERS AND RETURNS LOCATED IN BLACK CEILING SHALL BE FLAT BLACK FINISH.									

GENERAL NOTES

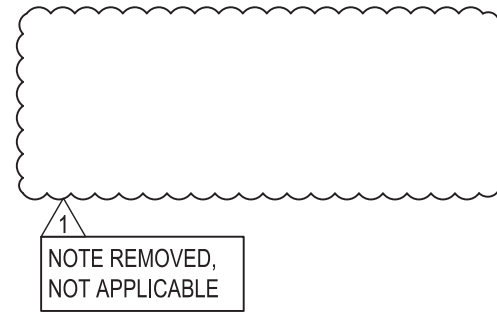
- DEVIATIONS FROM THE HVAC PLANS ARE THE RESPONSIBILITY OF THE HVAC CONTRACTOR & WILL NOT RESULT IN ADDITIONAL COSTS TO THE OWNER UNLESS WRITTEN CHANGE ORDERS ARE APPROVED BY THE OWNER.
- ALL WORK TO BE PERFORMED TO STATE CODE & SMACNA GUIDELINES.
- INSTALL UNITS ACCORDING TO MANUFACTURERS GUIDELINES.
- PROVIDE OWNER W/ OPERATION & MAINTENANCE MANUALS & SYSTEM SCHEMATICS.
- CONTRACTOR TO CONFIRM VOLTAGES & PHASES OF EQUIPMENT PRIOR TO INSTALLATION.
- VERIFY ALL EXISTING CONDITIONS PRIOR TO INSTALLATION (DRAWINGS ARE DIAGRAMMATIC IN NATURE & DO NOT REFLECT EXACT LOCATIONS OF EQUIPMENT OR OTHER APPARATUSES.)
- PROVIDE SHOP DRAWINGS TO THE ARCHITECT/DESIGNER FOR EQUIPMENT, FANS, REGISTERS, ETC. PRIOR TO PROCUREMENT.
- PROVIDE OWNER W/ COLOR CHOICES FOR SWITCHES & OTHER APPARATUSES WHERE APPLICABLE.
- VENT OWNER WATER HEATER AS REQUIRED.
- VENT DRYER THRU SIDEWALL TO EXTERIOR AS REQUIRED. MAINTAIN CLEARANCE FROM INTAKES AS NOTED.
- HANG & SUPPORT MATERIALS SHALL BE INSTALLED THE LATEST EDITION OF THE ASHRAE HANDBOOK OF FUNDAMENTALS.
- MAINTAIN AT LEAST 10 FEET CLEARANCE FROM INTAKES OR WINDOWS ON ALL EXHAUST VENTS.
- TEST, ADJUST, & CALIBRATE CONTROL SYSTEMS AS REQUIRED. PROVIDE SCHEMATICS / DESCRIPTION TO THE OWNER PRIOR TO INSTALLATION.
- INSTALLER RESPONSIBLE FOR FINAL TEST & BALANCING DURING TRAINING WEEK. PROVIDE WRITTEN REPORT BY THIRD PARTY INDEPENDENT TAB CONTRACTOR.
- HVAC CONTRACTOR TO INSTALL #2 GAS W/ 14" WATER COLUMN MAX. PER STATE CODE & AGA GUIDELINES (LABEL AS REQUIRED).
- CONTRACTOR TO VERIFY GAS METER CAPACITY W/ LOCAL GAS SUPPLIER.
- VERIFY W/ OWNER EXACT HEATER LOCATION TO AVOID BUILDING FUNCTION INTERFERENCE.
- REPLACE ALL AIR FILTERS PRIOR TO TURNING SYSTEM OPERATIONS OVER TO OWNER.
- HVAC CONTRACTOR IS RESPONSIBLE FOR A COMPLETE & FULLY WORKING SYSTEM.
- DUCT DIMENSIONS LISTED ARE NET FREE - CLEAR INSIDE DIMENSIONS.
- VERIFY DUCT LOCATIONS PRIOR TO FABRICATION. (VERIFY LIMITED AREA FOR DUCTWORK & OTHER APPARATUSES.)
- INSULATE DUCT WORK TO SMACNA GUIDELINES & STATE CODES.
- INSTALL VOLUME CONTROL DAMPERS AS INDICATED ON PLANS.
- FLEXIBLE ROUND DUCT WORK NOT TO EXCEED 8 FEET IN LENGTH. AVOID UNNECESSARY TURNS & SLACK.
- VERTICAL RETURN AIR DUCT WORK DOWN FROM RTU'S TO BE LINED FOR SOUND ATTENUATION.
- DUCT WORK TO BE STANDARD GAUGE SHEET METAL (FIBROUS DUCT NOT ALLOWED.)
- INSULATE EXHAUST DUCT FOR EXHAUST FAN TO EXTERIOR TERMINATION.
- COORDINATE WORK W/ GENERAL CONTRACTOR & OWNER TO MAXIMIZE CEILING HEIGHT & AVOID CONFLICTS.
- S/S WALL PANELS FOR THE KITCHEN AREA ARE TO BE FURNISHED AND INSTALLED BY THE HVAC CONTRACTOR. PANELS ARE TO BE 18 GA. TYPE 304 S/S. SEE DETAILS AND LOCATIONS ON THE A103 DRAWING.
- EXHAUST FANS AND FURNACE FANS TO RUN CONTINUOUSLY DURING OCCUPIED MODE.
- NIGHT SET BACK THERMOSTATS TO BE INSTALLED ON ALL HVAC EQUIPMENT.

NATIONAL ACCOUNT PROGRAM

- LENNOX INDUSTRIES, INC. - ROOFTOP HVAC EQUIPMENT**
National Accounts Sales: (800) 367-8288 Option #1 lennox.com
National Account Technical Support: (800) 367-8288 Option #2 lennox.com
- ACCUREX GREENHECK FAN CORPORATION - KITCHEN HOODS, EXHAUST FANS, ROOF CURBS, ANSUL SYSTEMS, ACCESSORIES AND TEST AND BALANCE**
CONTACT AND JORDAN @ 1-773-220-6020 or arden.jordan@accurex.com
Secondary contact: Philip Kraft 1-262-227-7860 philip.kraft@accurex.com
ACCUREX WILL PROVIDE BALANCED AIRFLOW AND FUNCTIONAL CHARACTERISTICS OF THE HVAC AS THEY RELATE TO AIRFLOW AND RESISTANCE ONLY. SERVICES TO BE PERFORMED BY A CERTIFIED NEBB FIRM AND ITS MANAGING GROUP - NATIONAL TAB
- CARNES COMPANY - DIFFUSERS AND GRILLES**
National Accounts Sales: Chris Strawn @ (800) 840-6411 cstrawn@carnes.com
National Accounts Rep: Brian Baker @ (800) 840-6411 bbaker@carnes.com

MECHANICAL EQUIPMENT SPECIFICATIONS

- RTU-1 **LENNOX EMERGENCY SERIES LGH210-H48 W/ PRODIGY CONTROLLER**
COMBINATION GAS W/ HIGH TWO-STAGE HEATING & ELECTRIC COOLING ROOFTOP UNIT W/ HUMIDITROL & STAINLESS STEEL HEAT EXCHANGER. LOW HEAT 234,000 BTU/HR & HIGH HEAT 360,000 BTU/HR INPUT HEATING CAPACITY. 80.0% EFF. 180,000 NOMINAL COOLING CAPACITY. 12.0 EER. 208 / 230 VOLT, 3 PHASE. 100 MCOOP (NOTIFY ELECTRICAL CONTRACTOR IF BREAKER SIZE CHANGES). 6,150 CFM CONSTANT VOLUME SUPPLY, 1,700 CFM OA MINIMUM. IN ADDITION TO THE OPTIONS LISTED ABOVE, INCLUDE THE FOLLOWING FACTORY INSTALLED OPTIONS: WEATHERPROOF DISCONNECT SWITCH, FACTORY INSTALLED FIELD POWERED GFCI RETURN AIR SMOKE DETECTORS, DRAIN PAN OVERFLOW SWITCH, SINGLE ENTHALPY ECONOMIZER WITH BAROMETRIC RELIEF AND HOODS. INCLUDE THE FOLLOWING FIELD INSTALLED OPTIONS: 2" MERV8 FILTERS, SPARE BELT, DOWN FLOW HYBRID CURB, PVC DRAIN TRAP KIT, REMOTE HUMIDITY SENSOR, MESH HAIL GUARD, LENNOX MODEL 13H15 PROGRAMMABLE THERMOSTAT. **NO SUBSTITUTIONS.**
- RTU-2 **LENNOX EMERGENCY SERIES LGH210-H48 W/ PRODIGY CONTROLLER**
COMBINATION GAS W/ HIGH TWO-STAGE HEATING & ELECTRIC COOLING ROOFTOP UNIT W/ HUMIDITROL & STAINLESS STEEL HEAT EXCHANGER. LOW HEAT 234,000 BTU/HR & HIGH HEAT 360,000 BTU/HR INPUT HEATING CAPACITY. 80.0% EFF. 210,000 NOMINAL COOLING CAPACITY. 12.0 EER. 208 / 230 VOLT, 3 PHASE. 100 MCOOP (NOTIFY ELECTRICAL CONTRACTOR IF BREAKER SIZE CHANGES). 6,150 CFM CONSTANT VOLUME SUPPLY, 1,700 CFM OA MINIMUM. IN ADDITION TO THE OPTIONS LISTED ABOVE, INCLUDE THE FOLLOWING FACTORY INSTALLED OPTIONS: WEATHERPROOF DISCONNECT SWITCH, FACTORY INSTALLED FIELD POWERED GFCI RETURN AIR SMOKE DETECTORS, DRAIN PAN OVERFLOW SWITCH, SINGLE ENTHALPY ECONOMIZER WITH BAROMETRIC RELIEF AND HOODS. INCLUDE THE FOLLOWING FIELD INSTALLED OPTIONS: 2" MERV8 FILTERS, SPARE BELT, DOWN FLOW HYBRID CURB, PVC DRAIN TRAP KIT, REMOTE HUMIDITY SENSOR, MESH HAIL GUARD, LENNOX MODEL 13H15 PROGRAMMABLE THERMOSTAT. **NO SUBSTITUTIONS.**
- PRV-1 **RESTROOM EXHAUST FAN - REFER TO SHEET M204**
- PRV-2 **GRIDDLE EXHAUST FAN - REFER TO SHEET M202**
- PRV-3 **FRYER EXHAUST FAN - REFER TO SHEET M203**
- EF-1A **MOP ROOM EXHAUST FAN - REFER TO SHEET M204**
- ITEM #49A **GRIDDLE HOOD - REFER TO SHEET M202**
- ITEM #59A **FRYER HOOD - REFER TO SHEET M203**
- ECH-1 **ELECTRIC CEILING HEATER Q-MARK OR EQUAL. CDF-548 ELECTRIC CEILING HEATER & CDF RECESSED MOUNTING FRAME, CDF-TR4 TRANSFORMER & WALL MOUNTED THERMOSTAT, 208/240 VOLT SINGLE PHASE = 19.2 AMPS (SUPPLIED AND INSTALLED BY ELECTRICAL CONTRACTOR.)**



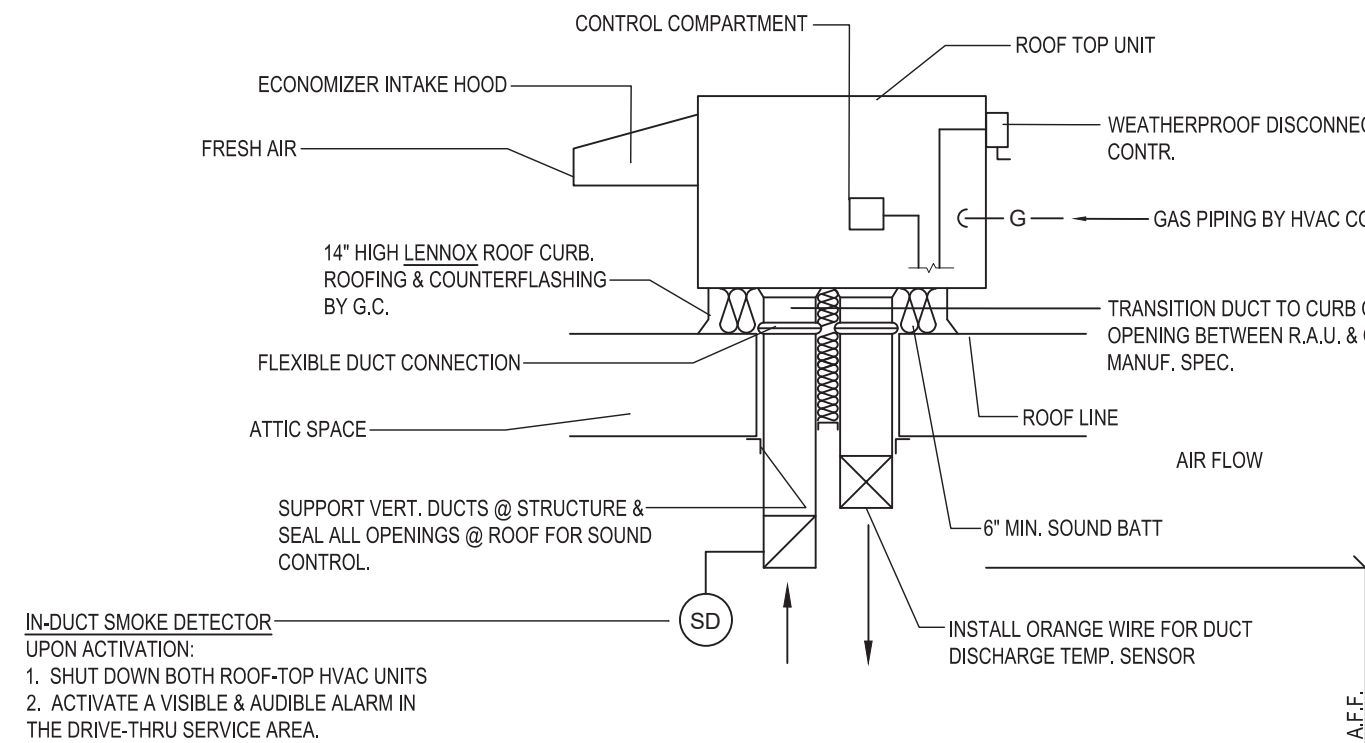
CONTROL NOTES

- NOTE: KITCHEN HOODS SUPPLIED AND INSTALLED BY HVAC CONTRACTOR
- WIRE RTU-1, RTU-2 TO SHUT-DOWN EXHAUST HOOD FANS TO CONTINUE TO RUN UPON ACTIVATION OF THE ANSUL SYSTEM.
 - WIRE RTU-1 & RTU-2 TO SHUT-DOWN UPON ACTIVATION OF ANY IN-DUCT SMOKE DETECTOR.
 - OCCUPIED MODE: FANS IN RTU-1 & RTU-2, EXHAUST FANS PRV-1, PRV-2, PRV-3 AND EF-1 TO RUN CONTINUOUSLY.
 - UNOCCUPIED MODE: FANS IN RTU-1 & RTU-2 TO RUN ONLY WHEN COOLING OR HEATING IS CALLED FOR.

TEST & BALANCE NOTES

- ACCUREX WILL PROVIDE BALANCED AIRFLOW & FUNCTIONAL CHARACTERISTICS OF THE HVAC SYSTEM AS THEY RELATE TO AIRFLOW & AIR PRESSURE ONLY. SERVICES TO BE PERFORMED BY A CERTIFIED NEBB FIRM & ITS MANAGING GROUP NATIONAL TAB.
- SERVICES NOT INCLUDED: PULLEY / SHEAVE CHANGES, MOTOR CHANGE OUTS, OR RETURN TRIPS DUE TO DELAYS CAUSED BY JOB INCOMPLETENESS.

AIR BALANCE TABLE				
EXHAUST AIR FLOW				
EQUIPMENT TAG	SERVICE	CFM		
PRV-1	RESTROOMS	375		
PRV-2	ITEM #49	1,500		
PRV-3	ITEM #59	1,500		
EF-1A	MOP ROOM	75		
TOTAL =		3,450		
VENTILATION REQUIRED PER 2018 INTERNATIONAL MECHANICAL CODE				
EQUIPMENT TAG	SERVICE	CFM		
RTU-1	DINING ROOM	1,477		
RTU-2	KITCHEN	108		
TOTAL =		1,585		
3,450 > 1,585 -> USE 3,450 CFM FOR OUTSIDE AIR CFM				
OVERALL AIRFLOW SUMMARY				
EQUIPMENT TAG	SERVICE	SUPPLY CFM	RETURN CFM	OUTSIDE AIR CFM
RTU-1	DINING ROOM	6,150	4,400	1,750
RTU-2	KITCHEN	6,150	4,450	1,700
TOTAL OUTSIDE AIR CFM =		3,450		



A6 ROOFTOP HVAC UNIT

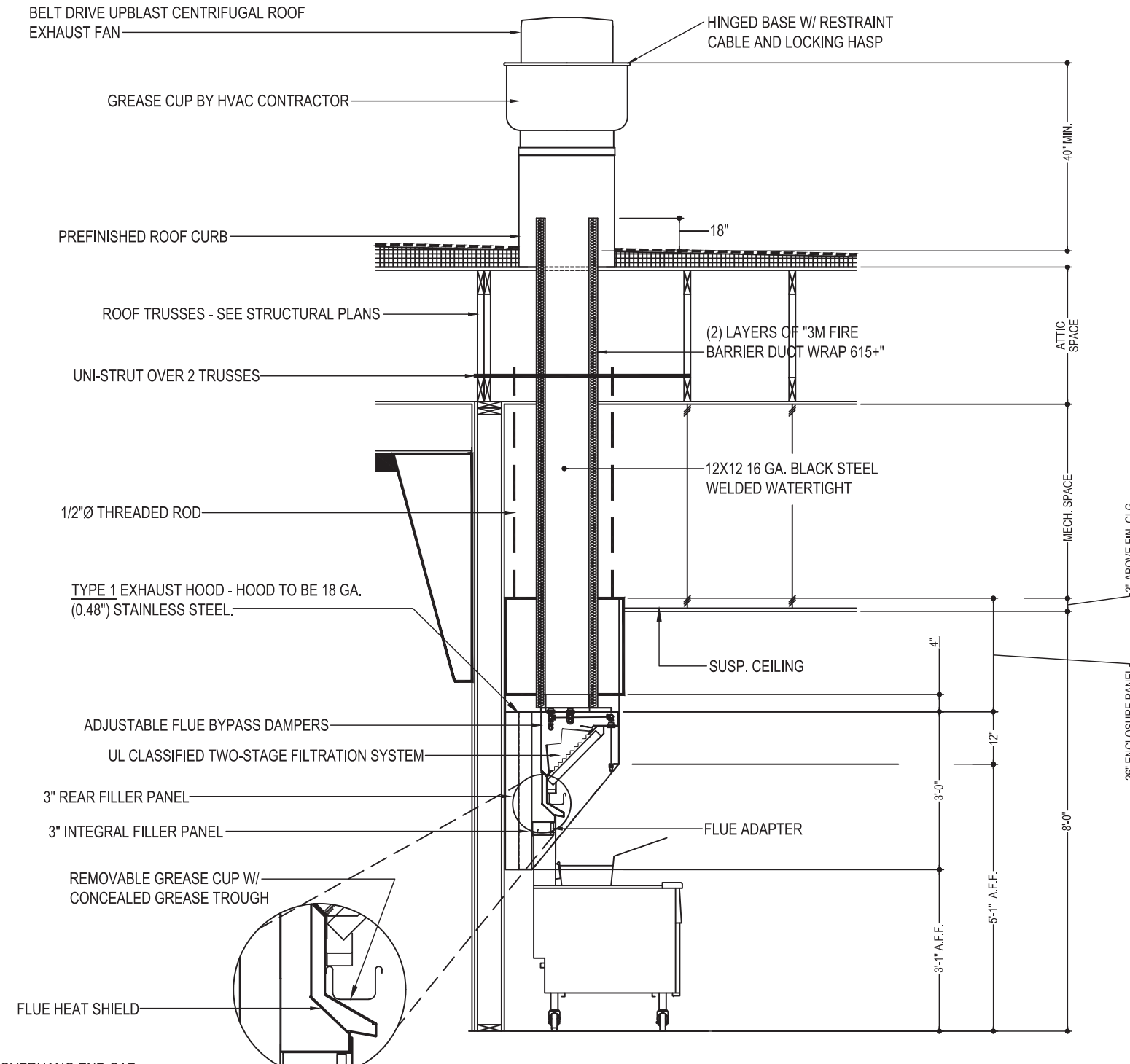
SCALE: N.T.S.

COOKING APPLIANCE / TYPE 1 HOOD INTERLOCK

- REMOTE SWITCH ON - POWER TO KITCHEN FAN CONTROL CENTER (KFC)
- KFC CONTROLS:
 - EXHAUST FANS PRV-2 (GRILLE) & PRV-3 (FRYERS) ARE STARTED.
 - OPENS OUTSIDE AIR INTAKE ON RTU-1 & RTU-2 TO MINIMUM FRESH AIR OPENING.
 - POWER TO OUTLETS #51 (GRILLE) & #60 (FRYERS).
- GRILLE & FRYER CAN BE STARTED.
- IN CASE OF FIRE:
 - SHUNT TRIP BREAK FOR GRILLE & FRYERS OUTLET TRIPS.
 - ANSUL SYSTEM IS ACTIVATED.
 - THE MECHANICAL GAS VALVES CLOSES.
 - SHUT DOWN RTU-1 & RTU-2 & CLOSE OUTSIDE AIR.
 - EXHAUST FANS PRV-2 & PRV-3 CONTINUE TO RUN.

GREASE HOOD FIRE SUPPRESSION SYSTEM

WET-CHEMICAL EXTINGUISHING SYSTEMS SHALL BE INSTALLED, MAINTAINED, PERIODICALLY INSPECTED AND TESTED IN ACCORDANCE WITH NFPA 17A AND THEIR LISTING.



C3 KITCHEN HOOD EXHAUST DETAIL

SCALE: N.T.S.
VERIFY MOUNTING HEIGHTS W/ OWNER AND GENERAL CONTRACTOR

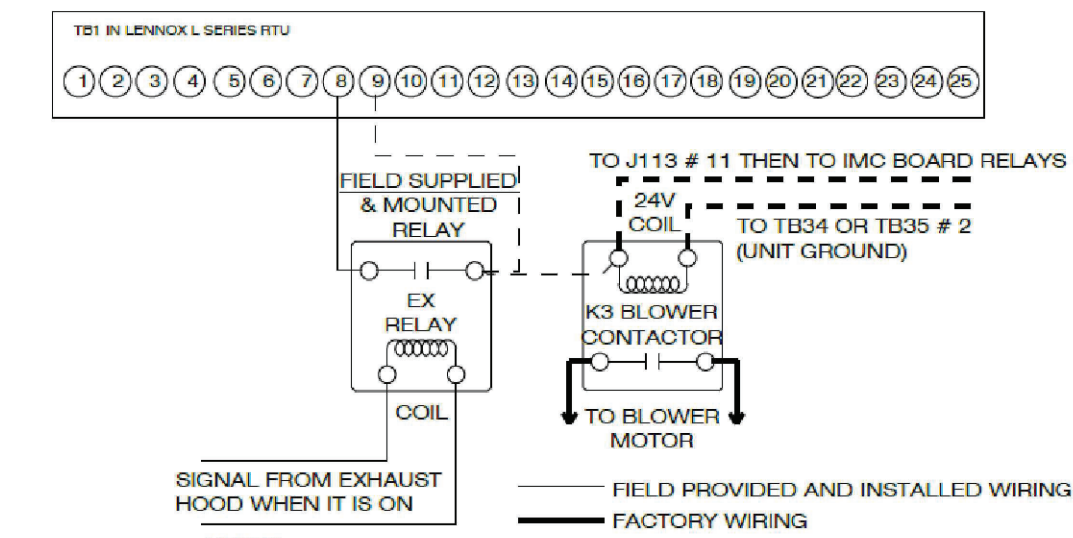
LENNOX SETTINGS FOR CULVERS

KITCHEN UNIT
PARAMETER 3.01 HEAT DELAY NEEDS TO BE SET TO "DISABLED", CONTROL PARAMETER 3.01=0 PG. 92 ECONOMIZER DIP SWITCHES A56 (EM1) NEED TO BE SET TO "GLOBAL" MODE. 1-ON 2-OFF (PG. 5 FIG 8) ECONOMIZER MIN POSITION POTENTIOMETER NEEDS TO BE DETERMINED AND SET BY AIR BALANCER. (PG. 52 FIG 33) BOTH THE THERMOSTAT AND THE HOOD FANS MUST BE TIED INTO TB1 TERMINAL 889 FOR OCCUOCCO CONTROL. FRESH AIR TEMPERING (HEATING) CONTROL PARAMETER 6.20=160 °55F" (KITCHEN IS USUALLY IN COOLING MODE) (PARAMETER 6.20 PG 99; X CHARTS PG 109)

DINING ROOM UNIT
PARAMETER 3.01 HEAT DELAY NEEDS TO BE SET TO "DISABLED", CONTROL PARAMETER 3.01=0 PG. 92 ECONOMIZER DIP SWITCHES A56 (EM1) NEED TO BE SET TO ECONOMIZER TYPE PURCHASED/INSTALLED. 1+7 2+7 (PG 5 FIGURE 8) ECONOMIZER MIN POSITION POTENTIOMETER NEEDS TO BE DETERMINED AND SET BY AIR BALANCER. (PG 52 FIGURE 33) THE THERMOSTAT MUST BE TIED INTO TB1 TERMINAL 889 FOR OCCUOCCO CONTROL. FRESH AIR TEMPERING (HEATING) CONTROL PARAMETER 6.20=142 "68F" (ROOM NEUTRAL) (PARAMETER 6.20 PAGE 99; X CHARTS PG 109)

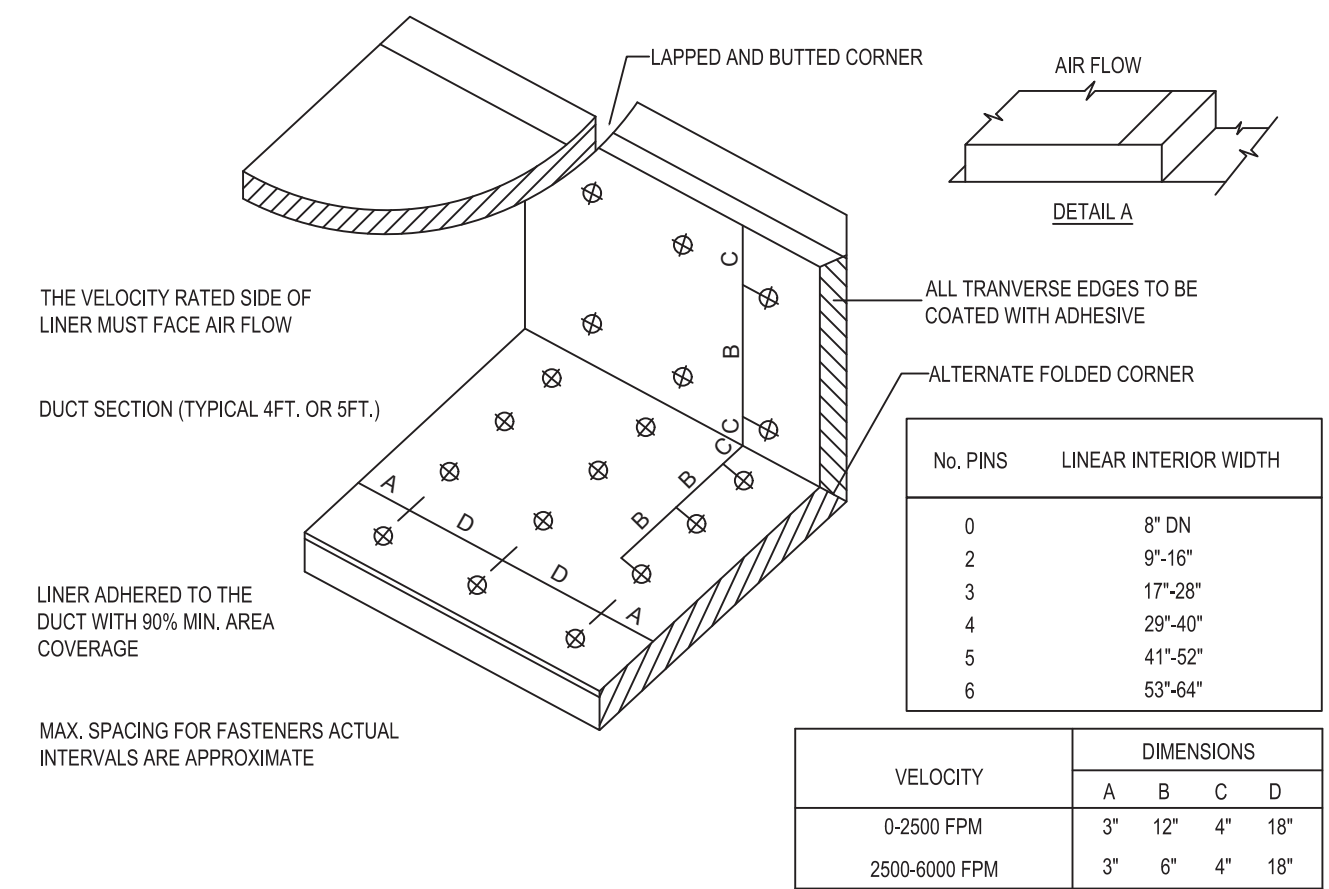
OTHER PARAMETERS THAT WE DIDN'T SET, BUT ARE PART OF START-UP:
ROOM SET POINT
REMOTE SENSOR OPERATION
TEMP DEADBANDS

CHECK FOR CORRECT OPERATION AND WIRING OF ALL SENSORS.



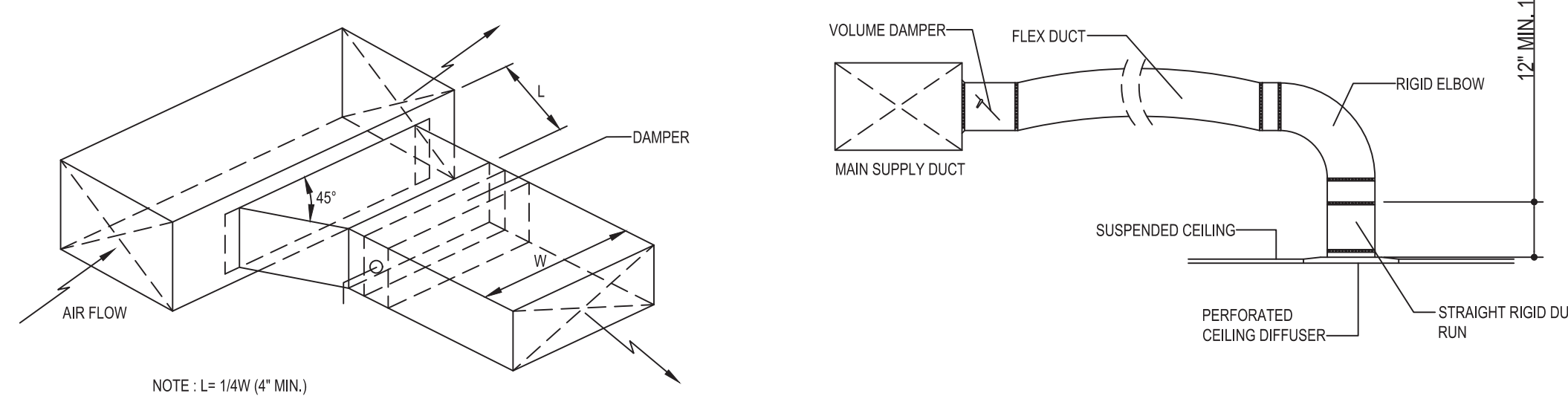
- NOTES:
- EX RELAY AND WIRING PROVIDED AND INSTALLED BY THE MECHANICAL CONTRACTOR.
 - WIRING FROM EX RELAY CONTACTS TO THE COIL OF THE K3 BLOWER CONTACTOR MUST LAND ON THE SAME SIDE AS THE WIRE MARKED J113 # 11.
- CONTACTS FROM KITCHEN EXHAUST FAN STARTER ENERGIZE OPERATOR COIL OF A FIELD PROVIDED AND FIELD INSTALLED RELAY. THE RELAY CONTACTS ARE USED TO MAKE AND BREAK THE OCCUPIED SIGNAL BETWEEN TERMINALS 8 AND 9, ON TB1, AND INSURE K3 BLOWER IS ENERGIZED. CREATING THE OCCUPIED CALL WILL MAKE THE ECONOMIZER MINIMUM POSITIONER ACTIVE, THEREBY MEETING FRESH AIR REQUIREMENTS. ECONOMIZER WILL MODULATE DAMPERS BEYOND MINIMUM POSITION SETTING, WHEN OUTDOOR AIR IS DEEMED SUITABLE FOR COOLING. DAMPERS WILL MODULATE TO TARGET 55 DEG F (DEFAULT) DISCHARGE AIR TEMPERATURE WHEN PROVIDING FREE COOLING.

LENNOX CULVERS EXHAUST FAN INTERLOCK FOR STORES WITHOUT MCP CONTROLLER



E5 DUCT LINER INSTALLATION DETAIL

SCALE: N.T.S.
NOTE: USE ONLY ON VERTICAL DROP FROM RTU TO WITHIN 9'-10" A.F.F., DUCT LINER WILL NOT BE PERMITTED ON ANY HORIZ. RUNS.



C6 BRANCH DUCT TAKEOFF DETAILS

SCALE: N.T.S.

© 2021

NEW CULVER'S RESTAURANT
2100 N Michigan St
Plymouth, IN 46563
County of MARSHALL

Calver's
Calver Franchising System, Inc.
1240 Water Street
Prairie du Sac, WI 53578
608-843-7880

OWNER:
HF Real Estate Plymouth, LLC
2915 Briantia Court
Elkhart, IN 46514
Andrew Habich
708-715-4055

OLLMANN ASSOCIATES ARCHITECTS, P.C.
200 South State Street
Belleville, Illinois 61008
815-544-7190 Phone

© OAA
All rights reserved; any copying, transmittal or disclosure subject to OAA written approval.

Revision: 9-21-2021

Date: 8-31-2021

2021-031
M201

CONSTRUCTION SET 10-19-2021

EQUIPMENT SCHEDULE

TYPE 1 KITCHEN HOOD										MARK: ITEM#49	
HOOD NO.	ACCUREX MODEL STYLE / CONFIGURATION	HOOD DIMENSIONS			GREASE CUP OR DRAIN	HOOD TEMP. RATING	TOTAL WEIGHT	SECTION LOCATION	MARK: ITEM#49		
		SECTION LENGTH	WIDTH	HEIGHT					MARK: ITEM#49	MARK: ITEM#49	
1	XGEP-66-S SINGLE WALL EXHAUST ONLY LOW PROXIMITY	64 IN.	TOP 23 IN. FRONT 12 IN. BOY 8 IN. BACK 36 IN.	RIGHT	600 DEG F	136.0 LBS.	SINGLE				

HOOD NO.	FIXTURE TYPE	BULB / LAMP INFO	QTY	INTENSITY FT CANDLES	GREASE FILTRATION DETAILS		
					TYPE / MODEL	QTY	LENGTH
1	NONE	NA	0 / 0 IN. OC	GREASE GRABBER	4	16 IN.	16 IN.

HOOD SECTION #	COLLAR #	EXHAUST PLENUM COLLARS					
		DISTANCE TO END (IN.)	WIDTH (IN.)	LENGTH (IN.)	DIAMETER (IN.)	VOLUME (CFM)	S.P. (IN. WC)
1.1		32	12	12	NA	1500	1.918
TOTAL EXHAUST CFM - SECTION 1		1500 = 281 CFM / FT					

OPTIONS AND ACCESSORIES

430 STAINLESS STEEL WHERE EXPOSED
UL 710 LISTED W/ OUT EXHAUST FIRE DAMPER - UL #R25625
BACK NON-INTEGRAL AIR SPACE - 3 IN WIDE
28 IN HIGH CEILING ENCLOSURES - FRONT LEFT RIGHT - FIELD INSTALLED
FACTORY MOUNTED EXHAUST COLLAR(S)
THIS HOOD IS PART OF A TEMPERATURE INTERLOCK CONTROL SYSTEM
INCLUDES PERFORMANCE ENHANCING LIP (PEL) TECHNOLOGY
STANDING SEAM CONSTRUCTION FOR SUPERIOR STRENGTH
EMBOSSSED STAINLESS STEEL FINISH FOR HIGH CORROSION RESISTANCE
EQUIPMENT SPECIFIC S/S FLUE ADAPTER

SPECIAL DESIGN REQUESTS

SDR #K1100145 - FLUE BYPASS HOOD

FIRE SUPPRESSION SYSTEM					MARK: FS FOR GRILL HOOD	
MANUFACTURER / MODEL	SUPPRESSANT TYPE	FLOW POINTS	SUPPLY LINE	DETECTION	MOUNTING	
ANSUL R-102 WET CHEMICAL	WET CHEMICAL	6 UTILIZED 11 AVAILABLE	CONTINUOUS	FUSIBLE LINK	REMOTE MOUNTED	

FULL INSTALLATION (INCLUDES PRE-PIPED HOODS) WITH DETECTION AND FACTORY COORDINATED INSTALL
CHROME SLEEVES FOR FACTORY PROVIDED APPLIANCES DROPS - INCLUDED
SUPPRESSION AGENT - INCLUDED - 3 GAL. - (1) 3 TANK(S)
GAS VALVE - INCLUDED - MECHANICAL SHUTOFF VALVE. SUPPLIED UP TO 2"
REMOTE PULL STATION - STANDARD - INSTALLATION AT SINGLE POINT OF EGRESS
METAL BLOW-OFF CAPS - INCLUDED
FIRE SYSTEM PERMIT - REQUIRED - FEE INCLUDED
360°F. FUSIBLE LINK OR AS TESTED AND INSTALLED BY LOCAL INSTALLER PER UL MANUAL

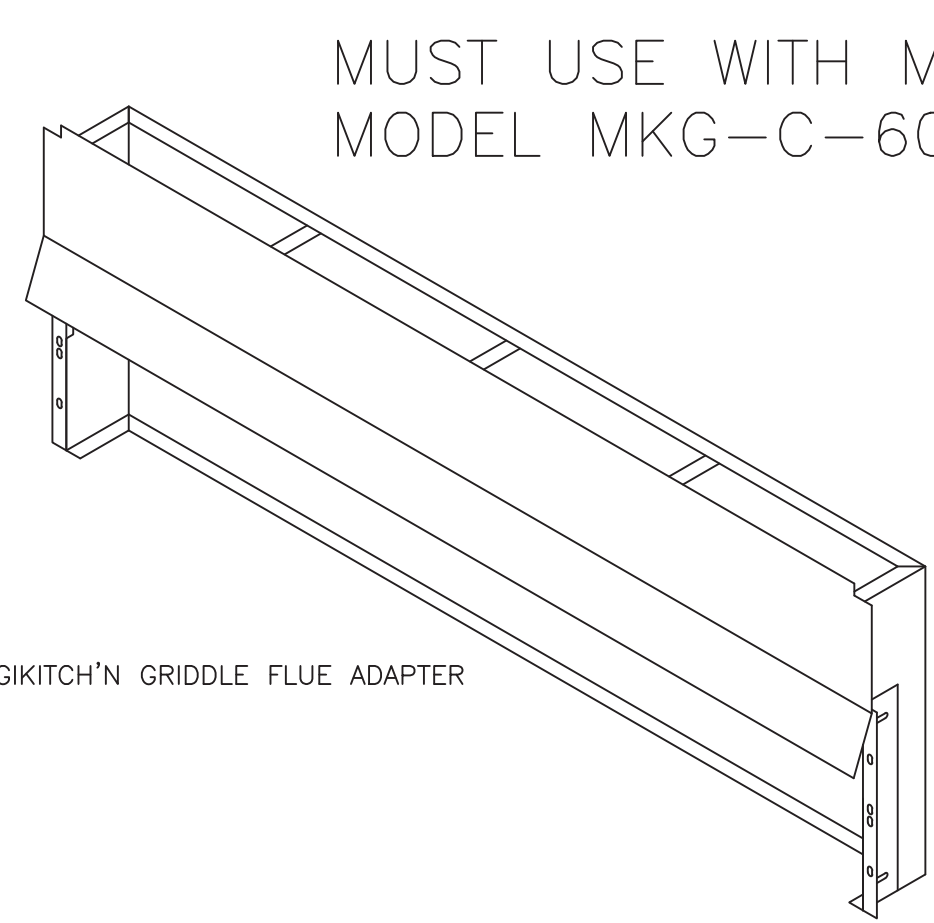
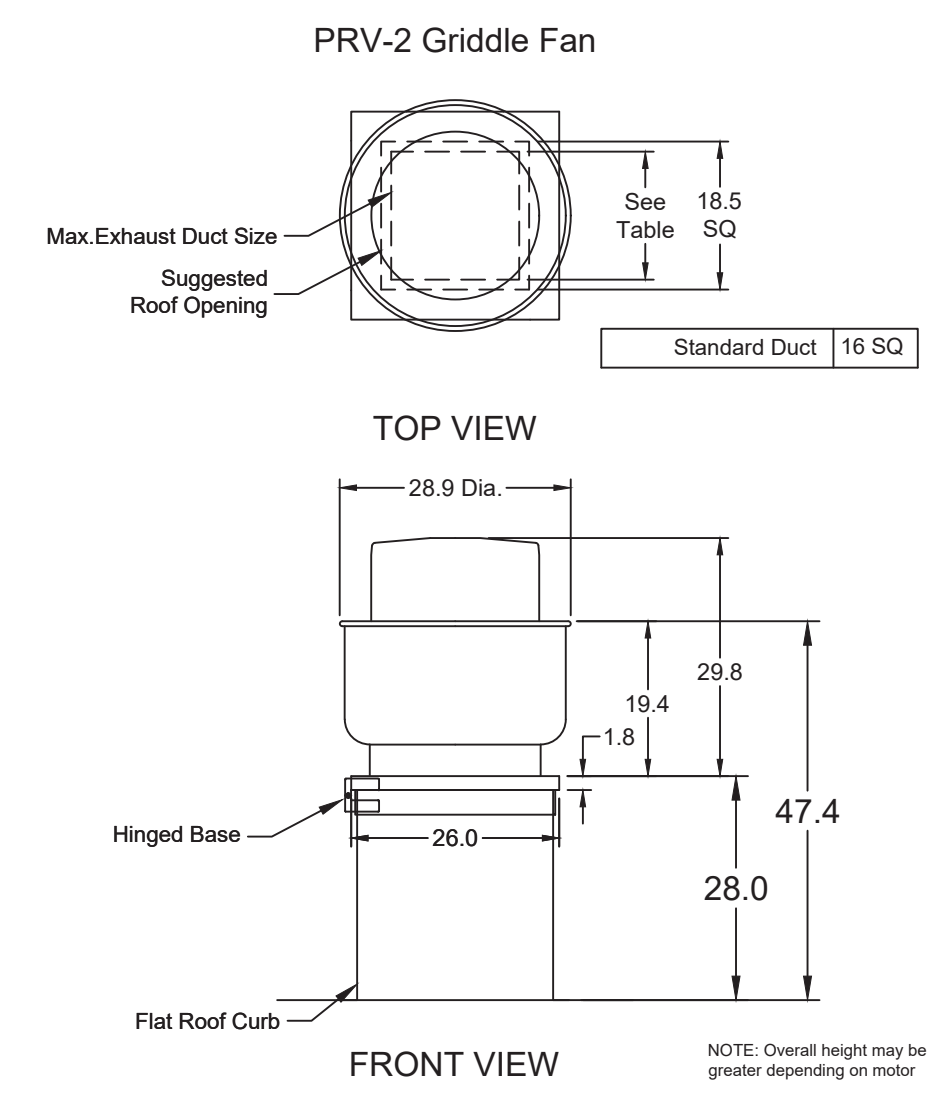
FIRE SYSTEM PROTECTED HOOD(S) (UL-300) (MARK NAME / SECTION)

GRILL HOOD SECTION 1 - (LENGTH 64.0 IN.) - LOW PROXIMITY HOOD - GREASE GRABBER FILTRATION SYSTEM

Belt Drive Upblast Centrifugal Roof Exhaust Fan										MARK: PRV-2		
Qty	Accurex Model	Volume (CFM)	SP (in wg)	FRPM	Operating Power (hp)	Weight (lb.)	Size (tp)	V/CP	Enct.	Motor RPM	Windings	FLA
1	XRUB-160XP-15	1500	2.337	2,411	1.29	171	1.5	208/60/3	CP	1725	1	6.6

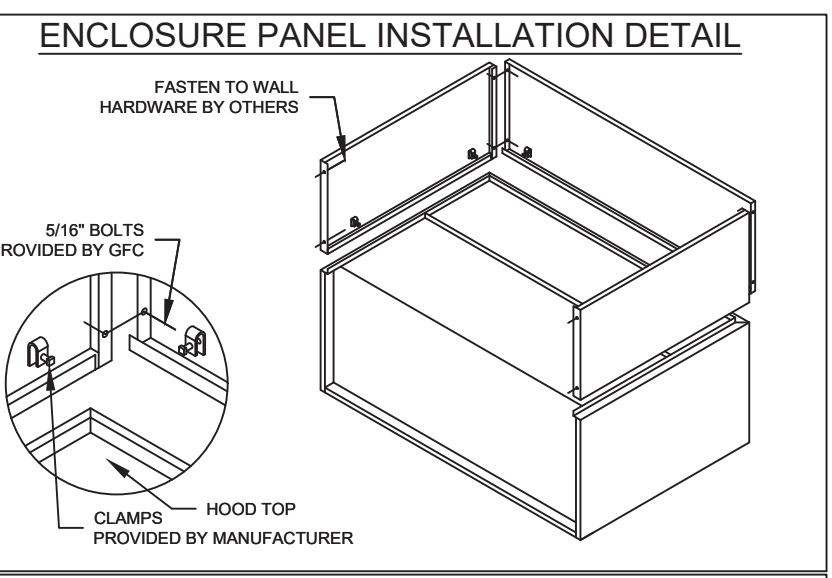
OPTIONS AND ACCESSORIES

UL/GUL 762 Listed - "Power Ventilators for Rest. Exh. Appliances"
Switch, NEMA-1, (PN N1TSD0-3-30) Toggle. Shipped with unit
Larger curb cap size - 28" Square
Roof curb-Galv., GFP-26-G28, Under sized 1.5" Total
Hinged Base (Attached)
High Temp Curb Seal Rated for Continuous duty at 2000F (Attached)
Clean-out Port
Grease Trap with Drain Connection (PN 475538)
Heat Baffle (Attached)
Bearings with Grease Fittings, L10 life of 100,000 hrs (L50 avg. life 500,000 hrs)



MUST USE WITH MAGIKITCH'N MODEL MKG-C-60

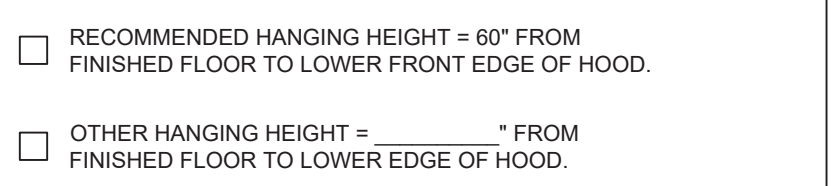
60" MAGIKITCH'N GRIDDLE FLUE ADAPTER



HOOD HANGING HEIGHT FOR FIRE SYSTEMS
VERIFICATION OF HOOD HANGING HEIGHT ABOVE FINISHED FLOOR (A.F.F.) IS REQUIRED FOR CORRECT PLACEMENT OF FIRE SYSTEM NOZZLES.

RECOMMENDED HANGING HEIGHT = 60" FROM FINISHED FLOOR TO LOWER FRONT EDGE OF HOOD.

OTHER HANGING HEIGHT = _____ FROM FINISHED FLOOR TO LOWER EDGE OF HOOD.



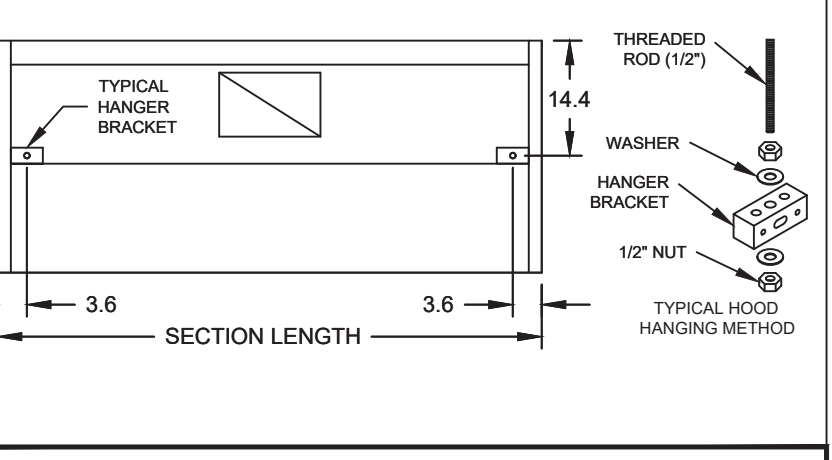
GENERAL DRAWING NOTES

Verify building entry conditions or limitations for equipment access to space.

Verify type and height of finished ceiling and if hood(s) may extend above finished ceiling (if required). Seismic installation and bracing of equipment is by others.

Greenheck will not accept liability for problems that result from sub-standard installation. Including field electrical wiring that deviate from supplied diagrams, globe conditions (ductwork, fuel types and structural conditions) that GFC has not been notified of at the time of ordering. Or use of this equipment other than that for which it is designed.

It is the responsibility of the purchaser to hire qualified personnel for installation and start-up of all equipment. Installation and start-up information is shipped with all equipment via the Installation, Operation and Maintenance Manual (IOM), also included is a troubleshooting guide. Have all start-up info available prior to any warranty claims and/or factory technical support.



VENTILATION SYSTEM NOTES

Greenheck ventilators are designed in compliance with all national codes: NFPA # 96, national electric code, BOCA, uniform mechanical code, international mechanical code, and southern building conference. See national evaluation report #436 for allowable values, and/or conditions of use concerning material presented in this document. Local codes may vary. It is the responsibility of the purchaser to submit drawings to local authorities.

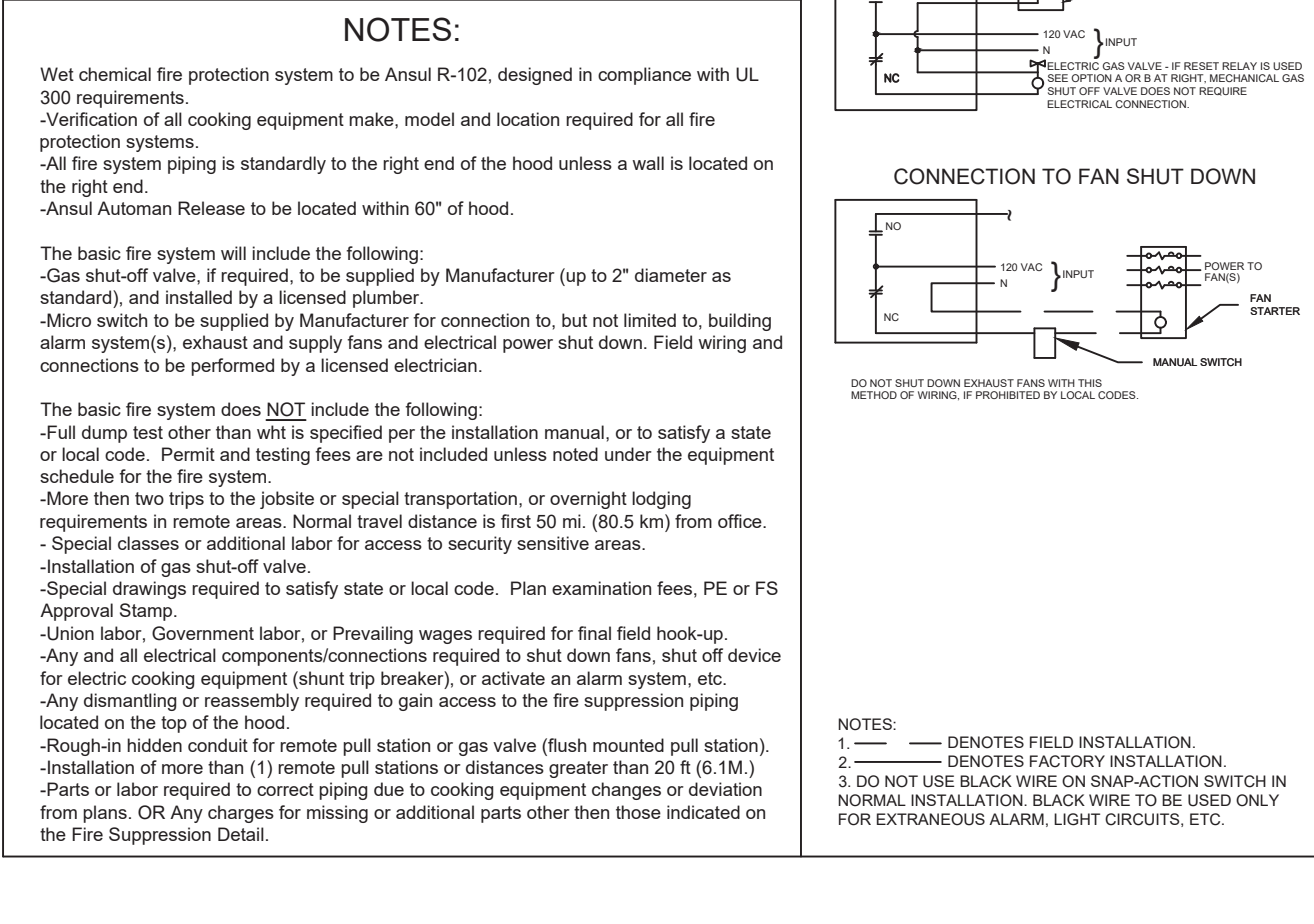
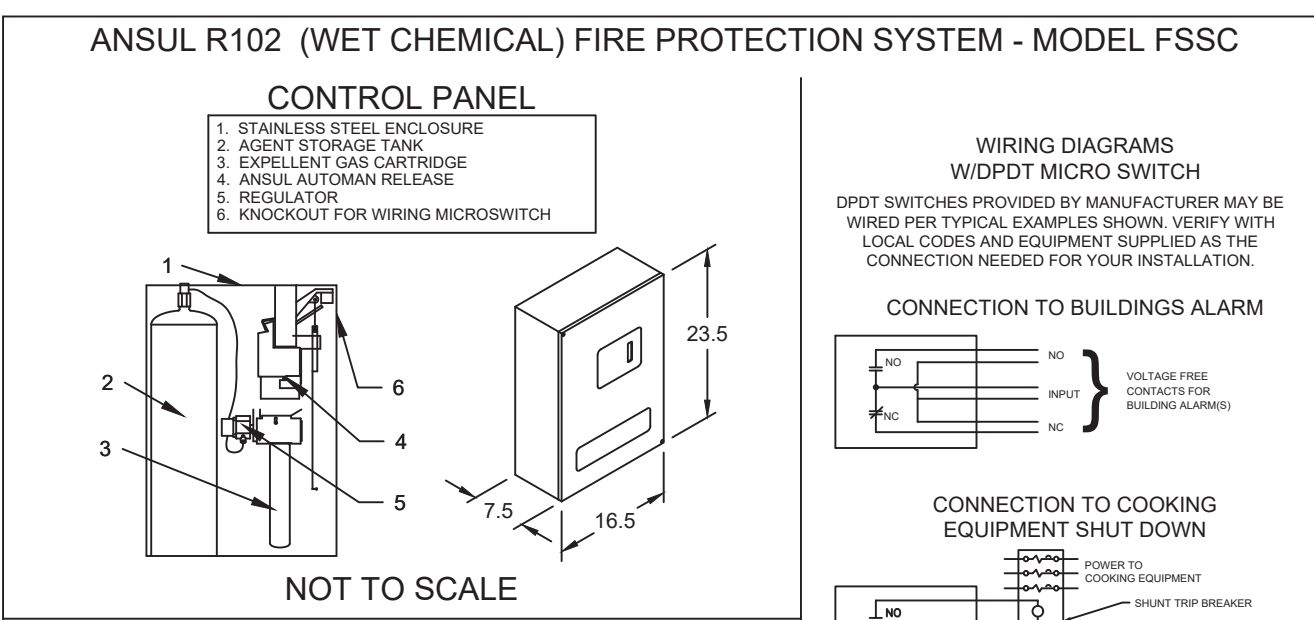
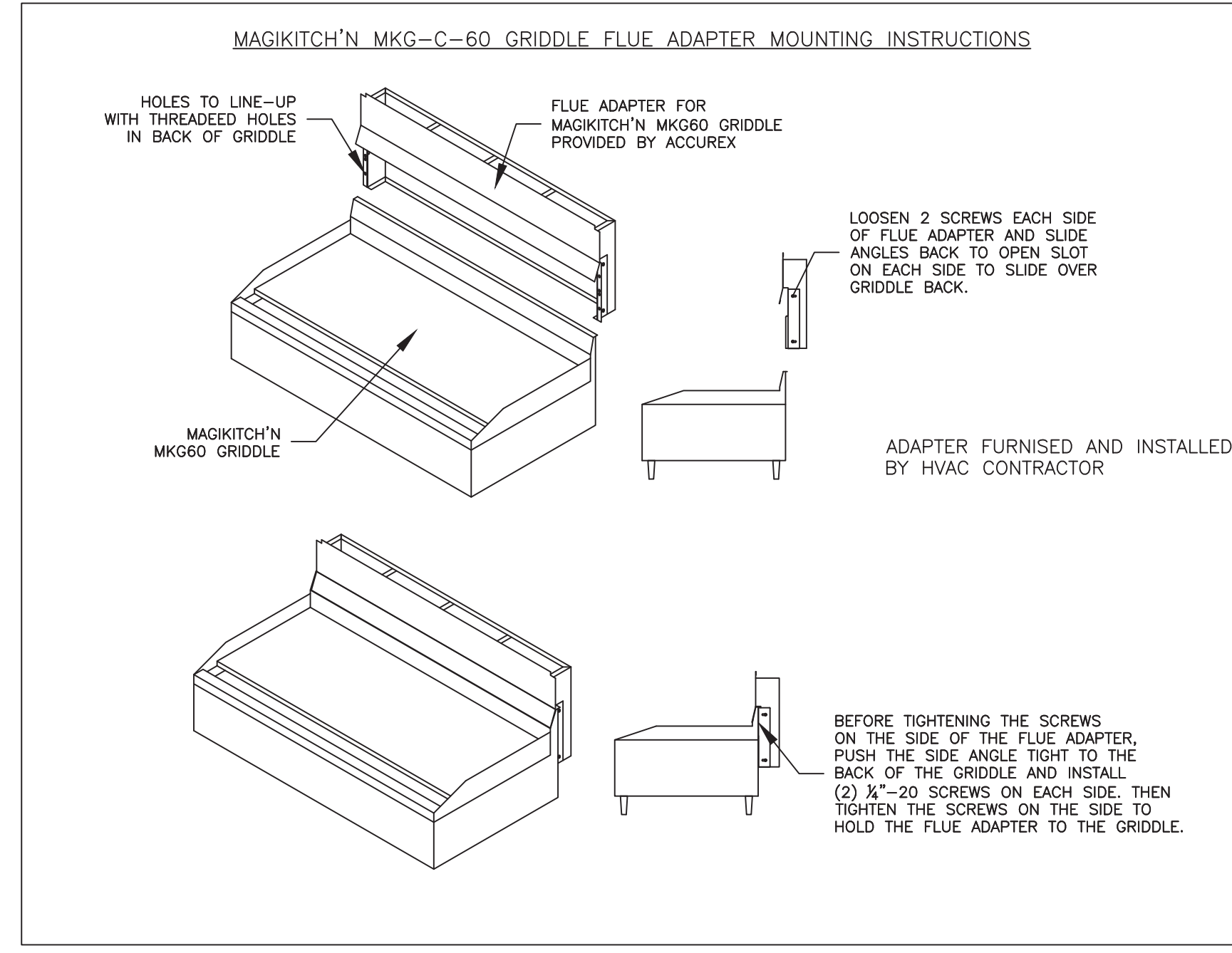
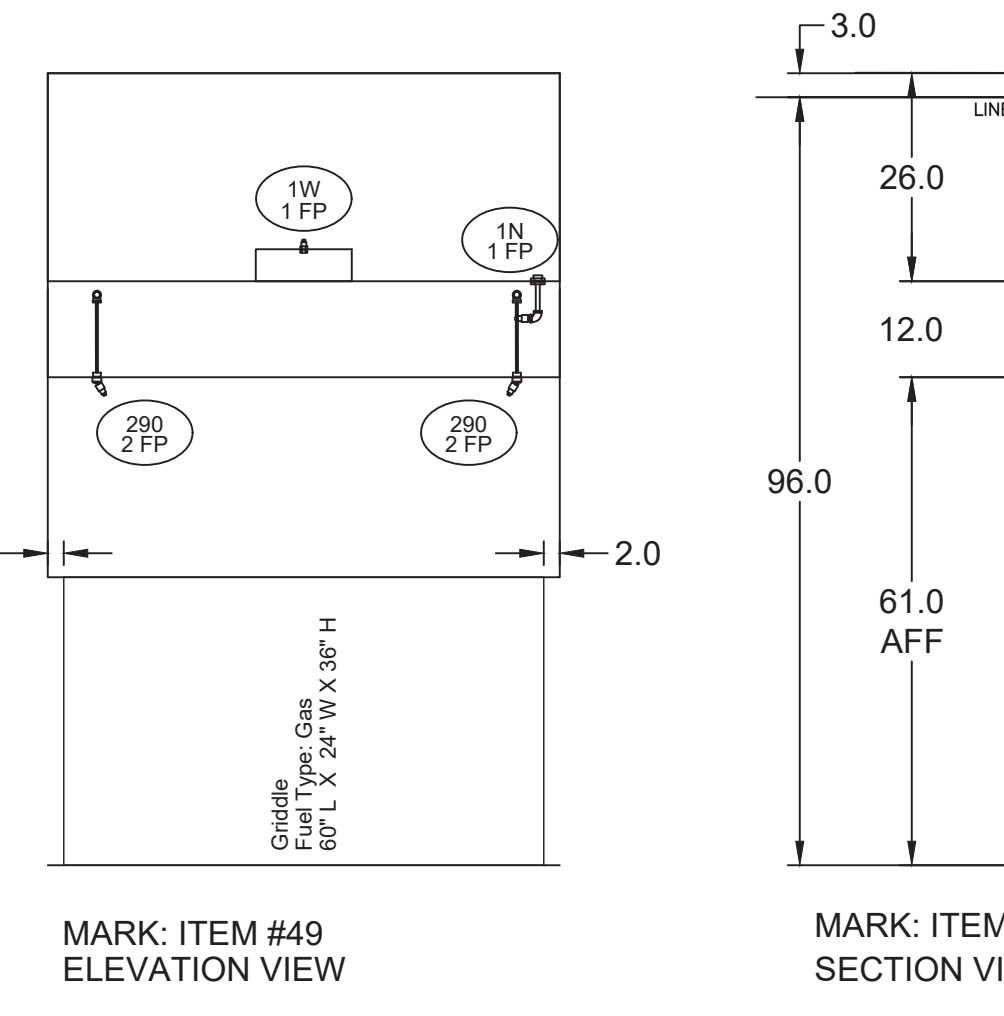
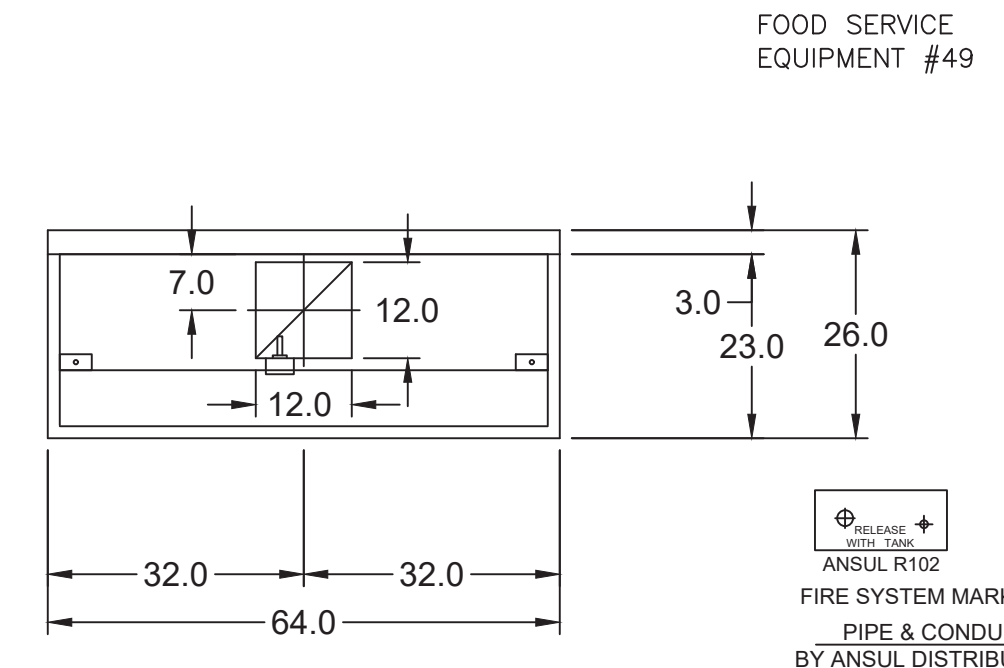
Exhaust and supply air volumes are to be maintained within -5% to +10% tolerance of values indicated. Static pressure(s) indicated are for the ventilator at the duct connection(s) only.

The grease filter face velocities are based on the filter manufacturers recommendations for maximum grease extraction. Inlet opening air velocities for waterwash, dry cartridge and high velocity cartridge filters manufactured by Greenheck are designed to deliver maximum grease extraction.

Hoods installation (by others unless otherwise noted) shall be in accordance with NFPA # 96 and applicable building codes.

PROPRIETARY INFORMATION NOTICE

This document is and contains confidential trade secret information of the company and remains property of the company and is to be returned upon request. Neither it nor information it contains may be reproduced or disclosed to persons not having a need-to-know consistent with the purpose of the loan document without written permission.



Thank you for your interest in Accurex

SUBMITTAL

Please return one approved print to your Greenheck Representative including signature, date, and answers to all submittal "verify" notes and questions. Fabrication will not begin until after approved drawings are received.

APPROVED AS SUBMITTED
 APPROVED AS NOTED
 REJECTED - REVISE AND RESUBMIT

SIGNATURE _____ DATE _____

REV	DESCRIPTION	DATE

ACCUREX

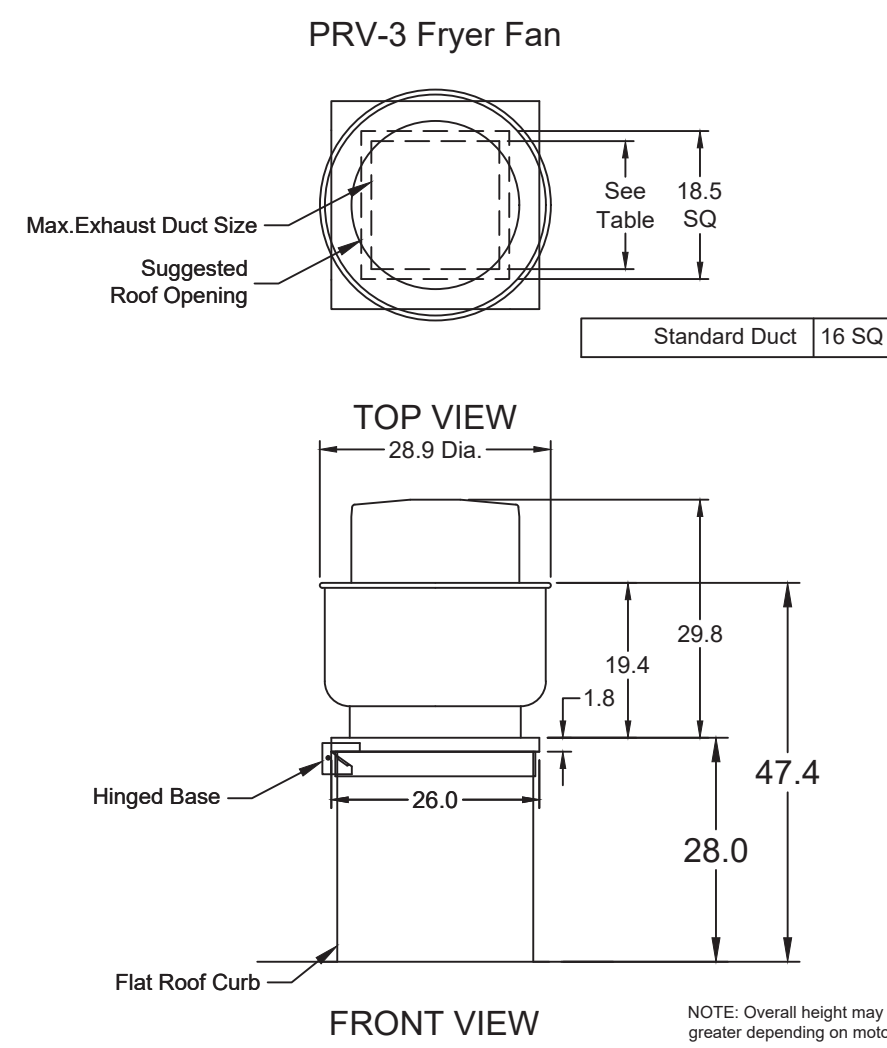
CULVER'S MASTER TEMPLATE

SCALE: 1/24

DATE: 8-31-2021

PROJECT NO: C28805A

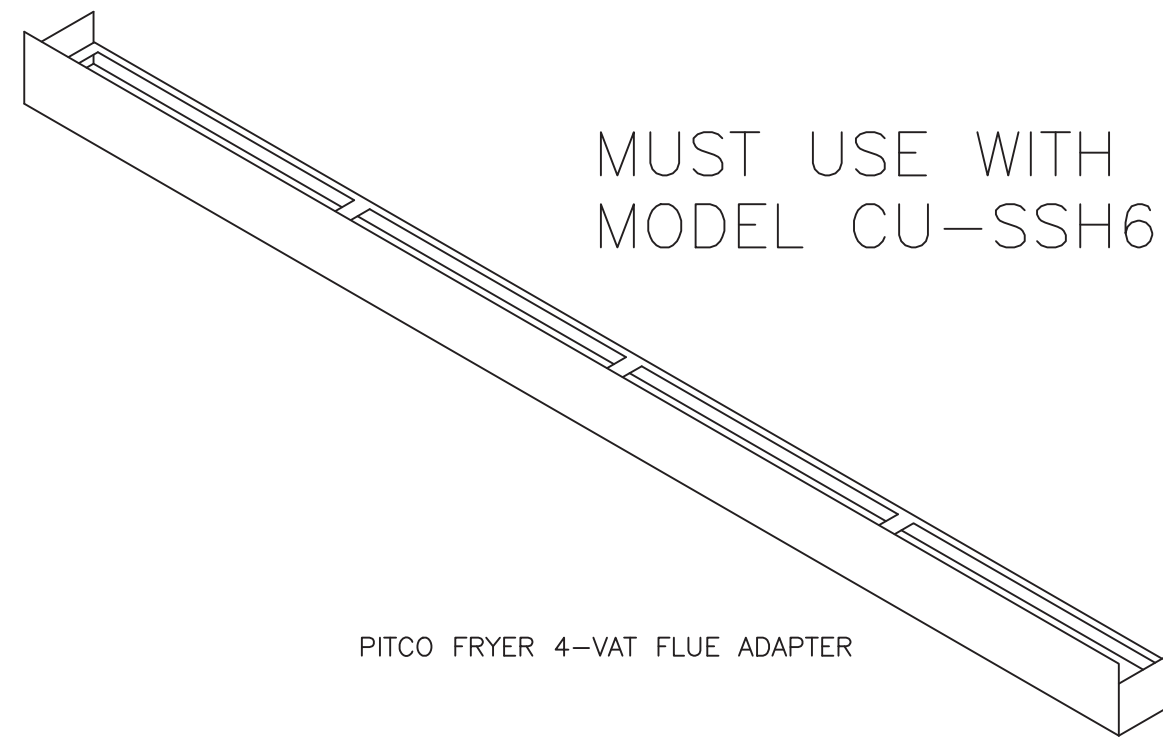




FOOD SERVICE EQUIPMENT #59

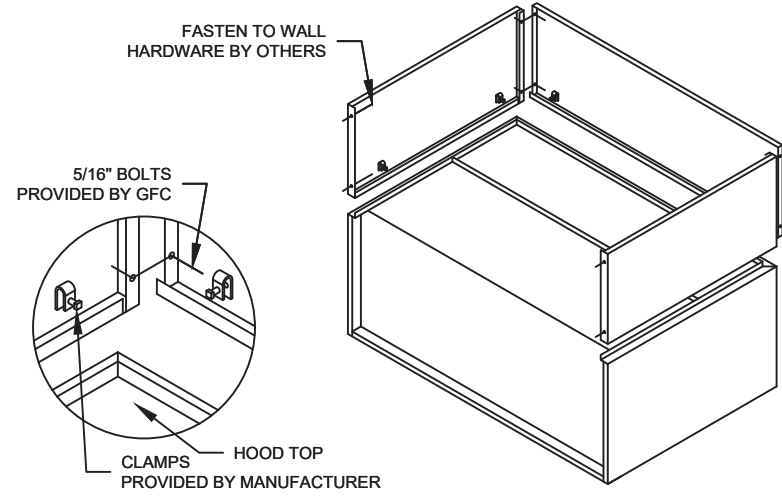
4-VAT FRYER BATTERY

MUST USE WITH PITCO MODEL CU-SSH60W



PITCO FRYER 4-VAT FLUE ADAPTER

ENCLOSURE PANEL INSTALLATION DETAIL

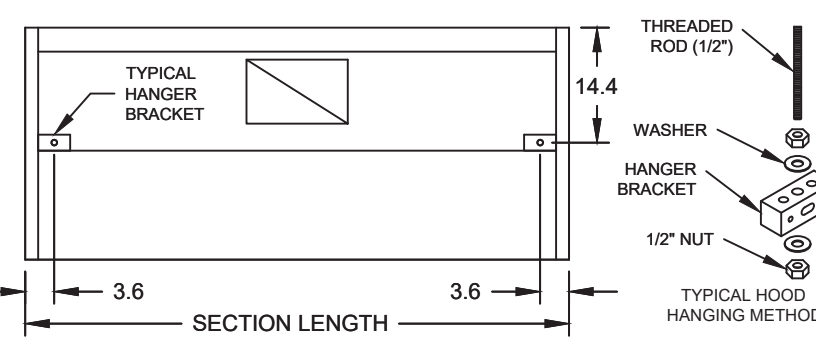


HOOD HANGING HEIGHT FOR FIRE SYSTEMS

VERIFICATION OF HOOD HANGING HEIGHT ABOVE FINISHED FLOOR (A.F.F.) IS REQUIRED FOR CORRECT PLACEMENT OF FIRE SYSTEM NOZZLES.

- RECOMMENDED HANGING HEIGHT = 60" FROM FINISHED FLOOR TO LOWER FRONT EDGE OF HOOD.
- OTHER HANGING HEIGHT = _____ FROM FINISHED FLOOR TO LOWER EDGE OF HOOD.

HOOD HANGER BRACKET DETAIL FOR BACKSHELF HOODS



GENERAL DRAWING NOTES

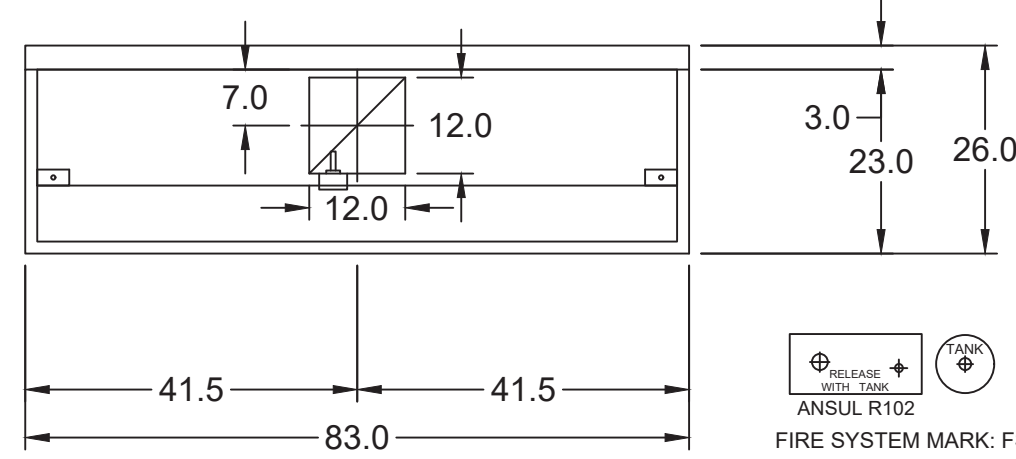
Verify building entry conditions or limitations for equipment access to space.
 Verify type and height of finished ceiling and if hood(s) may extend above finished ceiling (if required).
 Seismic installation and bracing of equipment is by others.
 Greenheck will not accept liability for problems that result from sub-standard installation. Including field electrical wiring that deviate from supplied diagrams, globe conditions (ductwork, fuel types and structural conditions) that GFC has not been notified of at the time of ordering. Or use of this equipment other than that for which it is designed.
 It is the responsibility of the purchaser to hire qualified personnel for installation and start-up of all equipment. Installation and start-up information is shipped with all equipment via the Installation, Operation and Maintenance Manual (IOM), also included is a troubleshooting guide. Have all start-up info available prior to any warranty claims and/or factory technical support.

VENTILATION SYSTEM NOTES

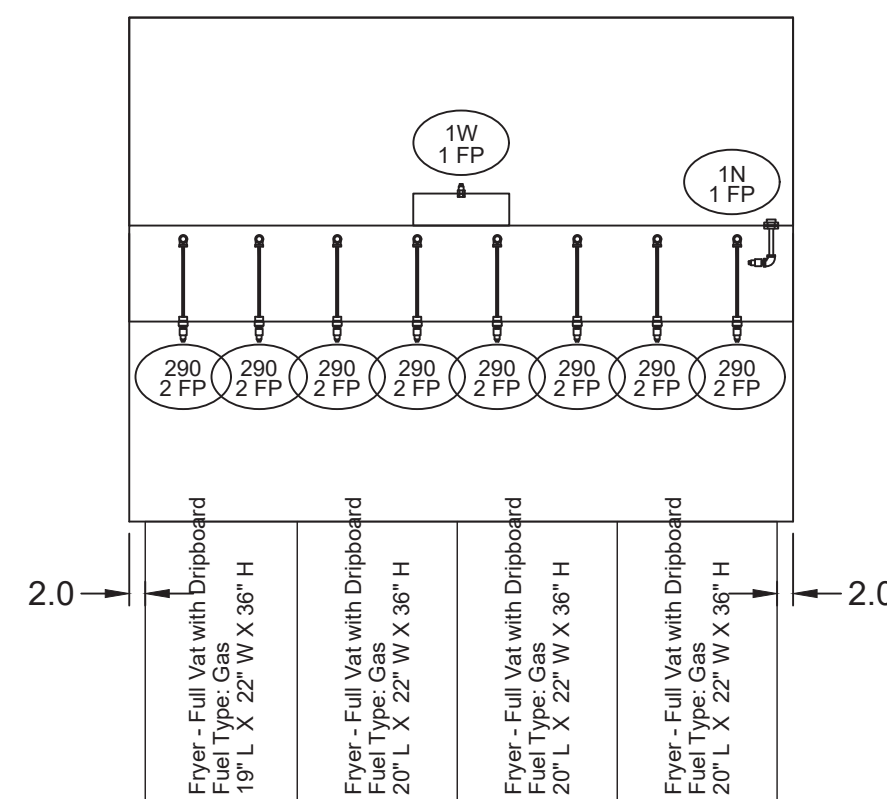
Greenheck ventilators are designed in compliance with all national codes: NFPA # 96, national electric code, BOCA, uniform mechanical code, international mechanical code, and southern building conference. See national evaluation report #436 for allowable values, and/or conditions of use concerning material presented in this document. Local codes may vary. It is the responsibility of the purchaser to submit drawings to local authorities.
 Exhaust and supply air volumes are to be maintained within -5% to +10% tolerance of values indicated. Static pressure(s) indicated are for the ventilator at the duct connection(s) only.
 The grease filter face velocities are based on the filter manufacturers recommendations for maximum grease extraction. Inlet opening air velocities for waterwash, dry cartridge and high velocity cartridge filters manufactured by Greenheck are designed to deliver maximum grease extraction.
 Hoods installation (by others unless otherwise noted) shall be in accordance with NFPA # 96 and applicable building codes.

PROPRIETARY INFORMATION NOTICE

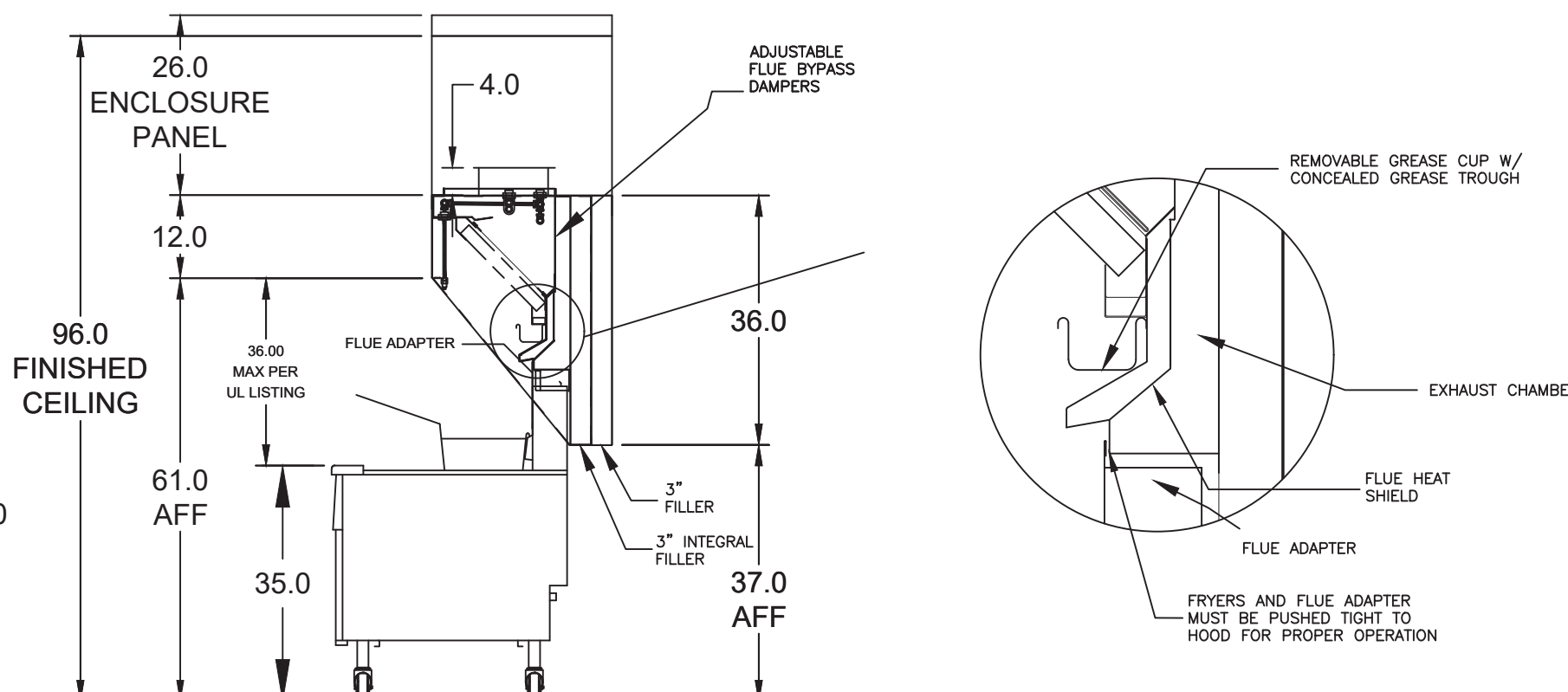
This document is and contains confidential trade secret information of the company and remains property of the company and is to be returned upon request. Neither it nor information it contains may be reproduced or disclosed to persons not having a need-to-know consistent with the purpose of the loan document without written permission.



MARK: ITEM #59 PLAN VIEW

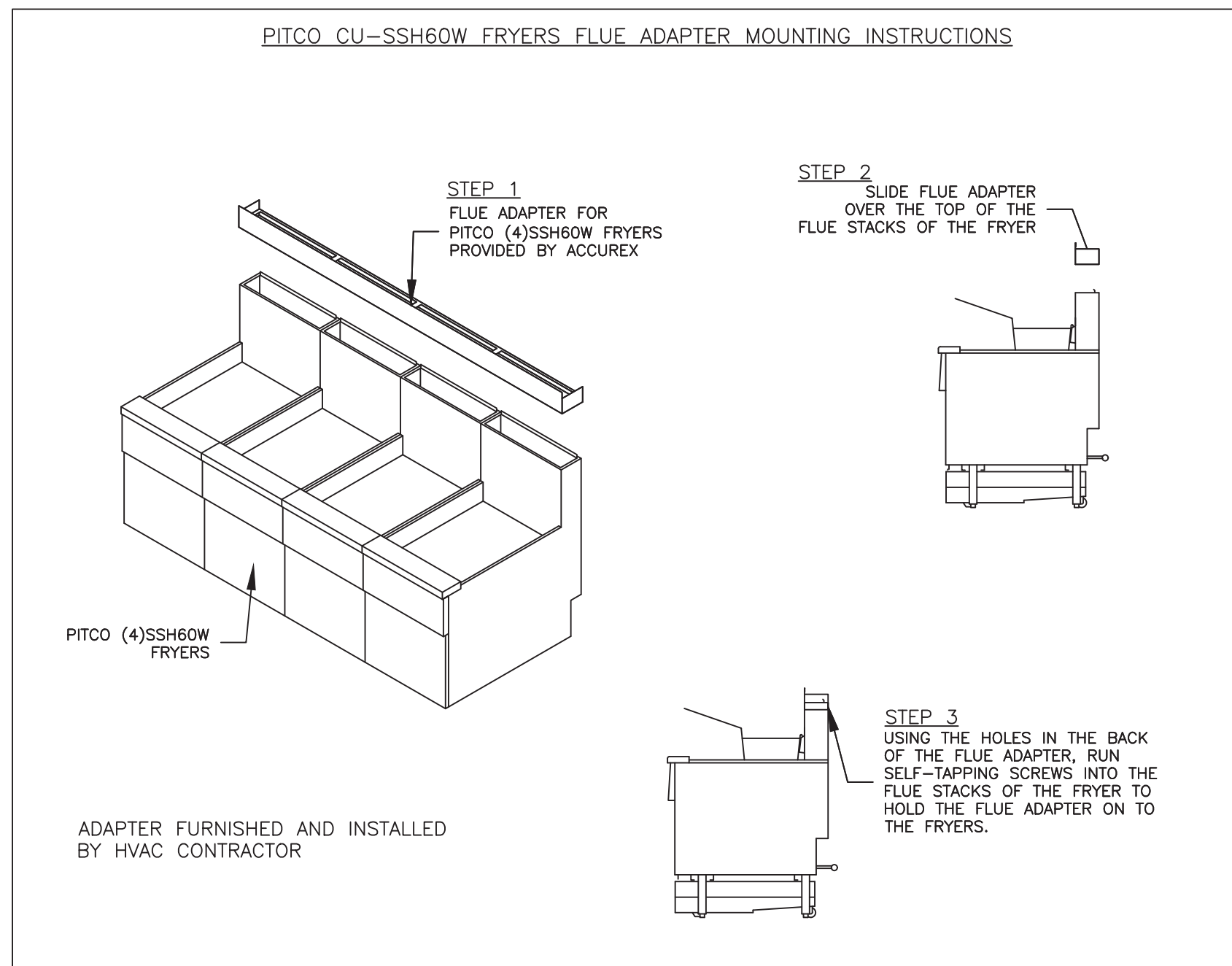


MARK: ITEM #59 ELEVATION VIEW

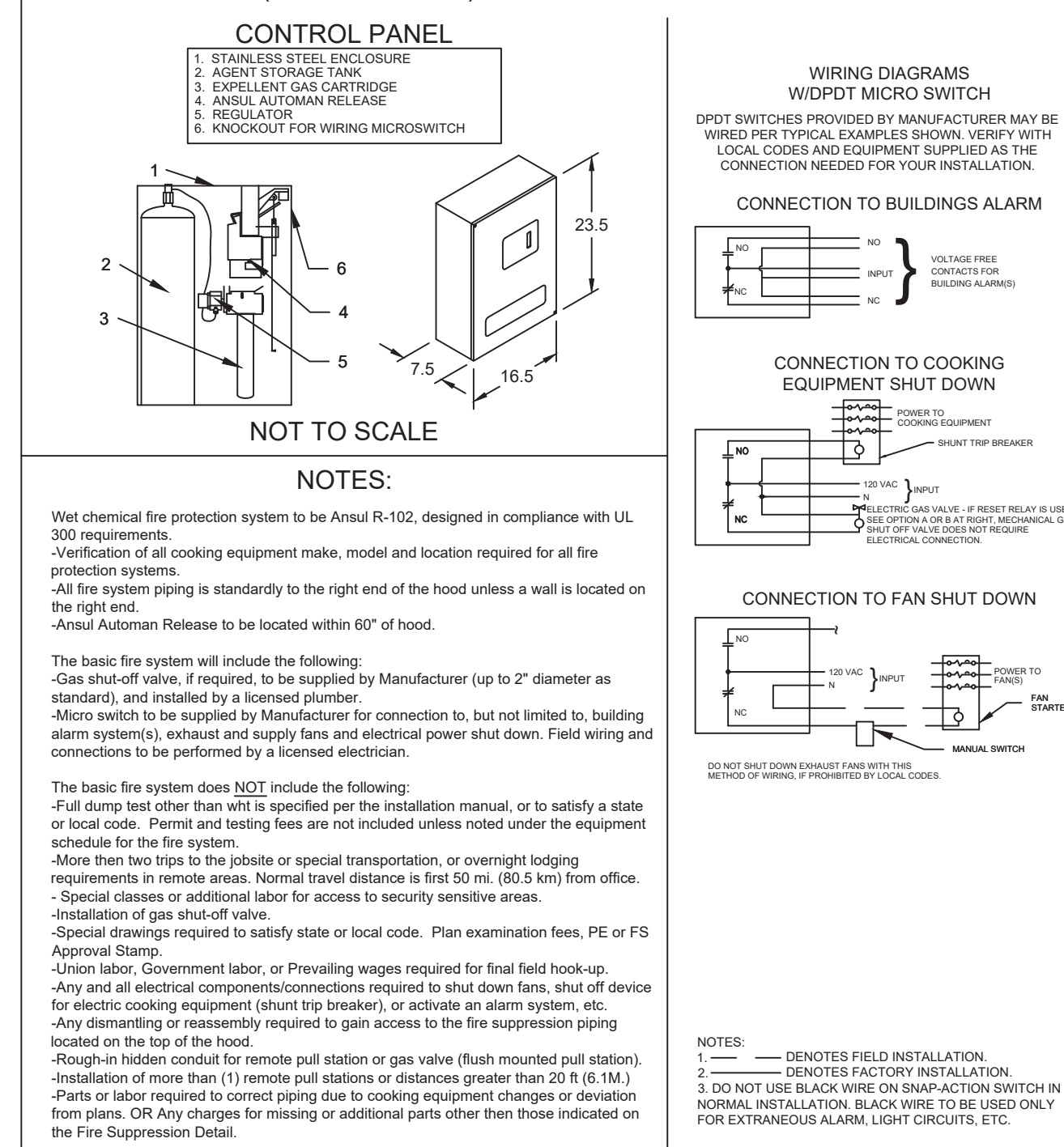


MARK: ITEM #59 SECTION VIEW

PITCO CU-SSH60W FRYERS FLUE ADAPTER MOUNTING INSTRUCTIONS



ANSUL R102 (WET CHEMICAL) FIRE PROTECTION SYSTEM - MODEL FSSC



Thank you for your interest in Accurex

SUBMITTAL

Please return one approved print to your Greenheck Representative including signature, date, and answers to all submittal "verify" notes and questions. Fabrication will not begin until after approved drawings are received.

APPROVED AS SUBMITTED
 APPROVED AS NOTED
 REJECTED - REVISE AND RESUBMIT

SIGNATURE _____ DATE _____

EQUIPMENT SCHEDULE

TYPE 1 KITCHEN HOOD				MARK: ITEM #59				
HOOD NO.	ACCUREX MODEL STYLE / CONFIGURATION	HOOD DIMENSIONS			GREASE CUP OR DRAIN	HOOD TEMP. RATING	TOTAL WEIGHT	SECTION LOCATION
		SECTION LENGTH	WIDTH	HEIGHT				
1	XXXX-83-S SINGLE WALL EXHAUST ONLY LOW PROXIMITY	83 IN.	TOP 23 IN. FRONT 12 IN. BOT 3 IN. BACK 35 IN.	RIGHT	600 DEG F	169.0 LBS.	SINGLE	

ILLUMINATION DETAILS				GREASE FILTRATION DETAILS			
HOOD NO.	FIXTURE TYPE	QTY	INTENSITY FT CANDLES	TYPE / MODEL MATERIAL	QTY	LENGTH	HEIGHT
1	NONE	NA	0 / 0 IN. OC	X-TRACTOR STAINLESS STEEL	5	16 IN.	16 IN.

EXHAUST PLENUM COLLARS								
HOOD SECTION #	COLLAR #	DISTANCE TO END (IN.)	WIDTH (IN.)	LENGTH (IN.)	DIAMETER (IN.)	VOLUME (CFM)	VELOCITY (FT/MIN)	
1.1		41.5	12	12	NA	1500	1500	
TOTAL EXHAUST CFM - SECTION 1								217 CFM / FT

OPTIONS AND ACCESSORIES

430 STAINLESS STEEL WHERE EXPOSED
 UL 710 LISTED W/ OUT EXHAUST FIRE DAMPER - UL #R2625
 BACK NON-INTEGRAL AIR SPACE - 3 IN WIDE
 26 IN HIGH CEILING ENCLOSURES - FRONT LEFT RIGHT - FIELD INSTALLED
 FACTORY MOUNTED EXHAUST COLLAR(S)
 THIS HOOD IS PART OF A TEMPERATURE INTERLOCK CONTROL SYSTEM
 INCLUDES PERFORMANCE ENHANCING LIP (PEL) TECHNOLOGY
 STANDING SEAM CONSTRUCTION FOR SUPERIOR STRENGTH
 EMBOSSED STAINLESS STEEL FINISH FOR HIGH CORROSION RESISTANCE
 EQUIPMENT SPECIFIC S/S FLUE ADAPTER

SPECIAL DESIGN REQUESTS

SDR #K1100559 - NEW 4L FRYER SYSTEM

FIRE SUPPRESSION SYSTEM

MARK: FS FOR FRYER HOOD

MANUFACTURER / MODEL	FLOW POINTS	SUPPLY LINE	DETECTION	MOUNTING
ANSUL R-102 WET CHEMICAL	18 UTILIZED 22 AVAILABLE	CONTINUOUS	FUSIBLE LINK	RIGHT END REMOTE MOUNTED

FULL INSTALLATION (INCLUDES PRE-PIPED HOOD(S) WITH DETECTION AND FACTORY COORDINATED INSTALL)

CHROME SLEEVES FOR FACTORY PROVIDED APPLIANCES DROPS - INCLUDED
 SUPPRESSION AGENT - INCLUDED - 4 GAL. - (23.5 LITERS)
 GAS VALVE - INCLUDED - MECHANICAL SHUTOFF VALVE, SUPPLIED UP TO 2\"/>

EQUIPMENT SCHEDULE

Belt Drive Upblast Centrifugal Roof Exhaust Fan											MARK: PRV-3	
Qty	Accurex Model	Volume (CFM)	SP (in wg)	FRPM	Operating Power (hp)	Weight (Lb.)	Size (hp)	V/CP	End	Motor RPM	Windings	FLA
1	XRUB-140-7	1500	1	1377	0.5	160	0.75	208/60/3	OP	1725	1	3.5

OPTIONS AND ACCESSORIES

UL/UL 762 Listed - "Power Ventilators for Rest. Exh. Appliances"
 Switch: NEMA-1, Toggle, Shipped with unit
 Larger curb cap size - 26" square
 Roof curb-Galv. GPF-26-G28, Undersized 1.5" total
 Hinged Base (Attached)
 Curb Seal (Attached)
 Clean-out Port
 Grease Trap with Drain Connection (PN 475538)
 Heat Baffle (Attached)

© 2021

NEW CULVER'S RESTAURANT
2100 N Michigan St
 Plymouth, IN 46563
 County of MARSHALL

Culver's
 Culver Franchising System, Inc.
 1240 Water Street
 Prairie du Sac, WI 53578
 608-643-7980

OWNER:
 HF Real Estate Plymouth, LLC
 2915 Briantay Court
 Elkhart, IN 46514
 Andrew Habich
 708-715-4055

OLLMANN ASSOCIATES ARCHITECTS, P.C.
 200 South State Street
 Belvidere, Illinois 61008
 815-544-7790 Phone

© OAA
 All rights reserved; any copying, transmission or disclosure subject to OAA written approval.

FRYER HOOD/EXHAUST SCHEDULE & DETAILS

Date: 8-31-2021
 Revision: _____

2021-031
M203

CONSTRUCTION SET 10-19-2021

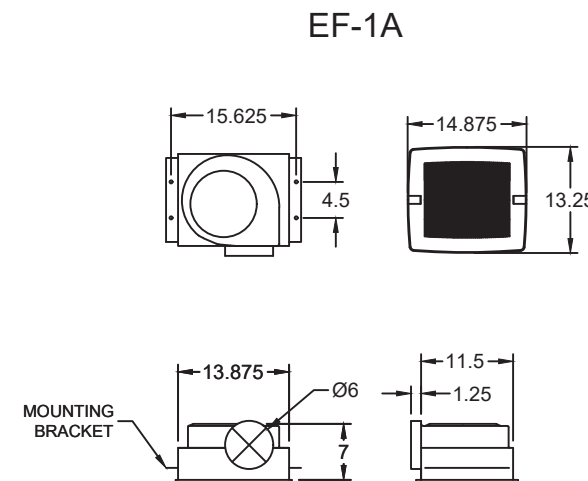
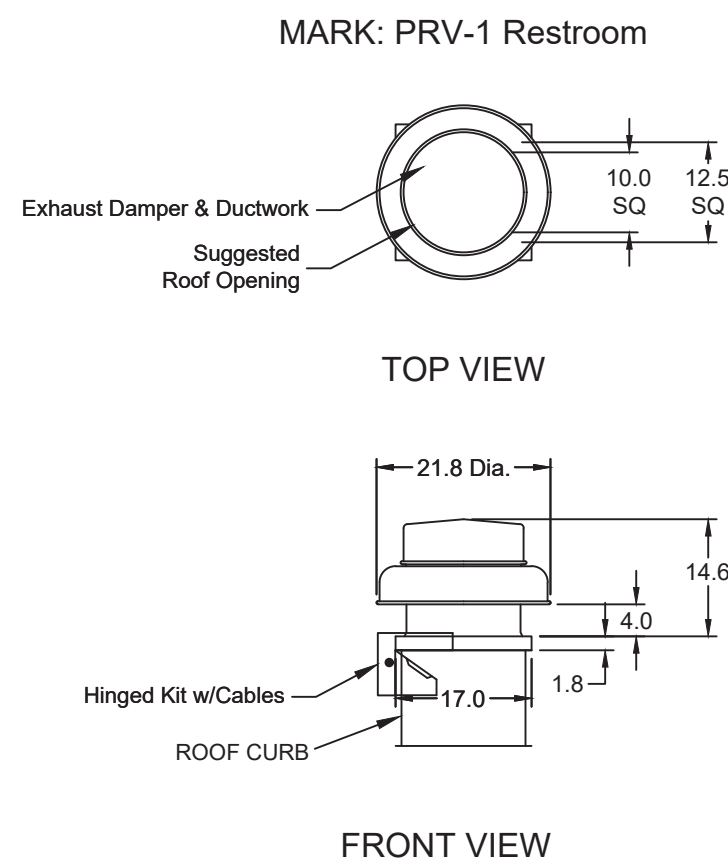
REV	DESCRIPTION	DATE

ACCUREX

CULVER'S MASTER TEMPLATE

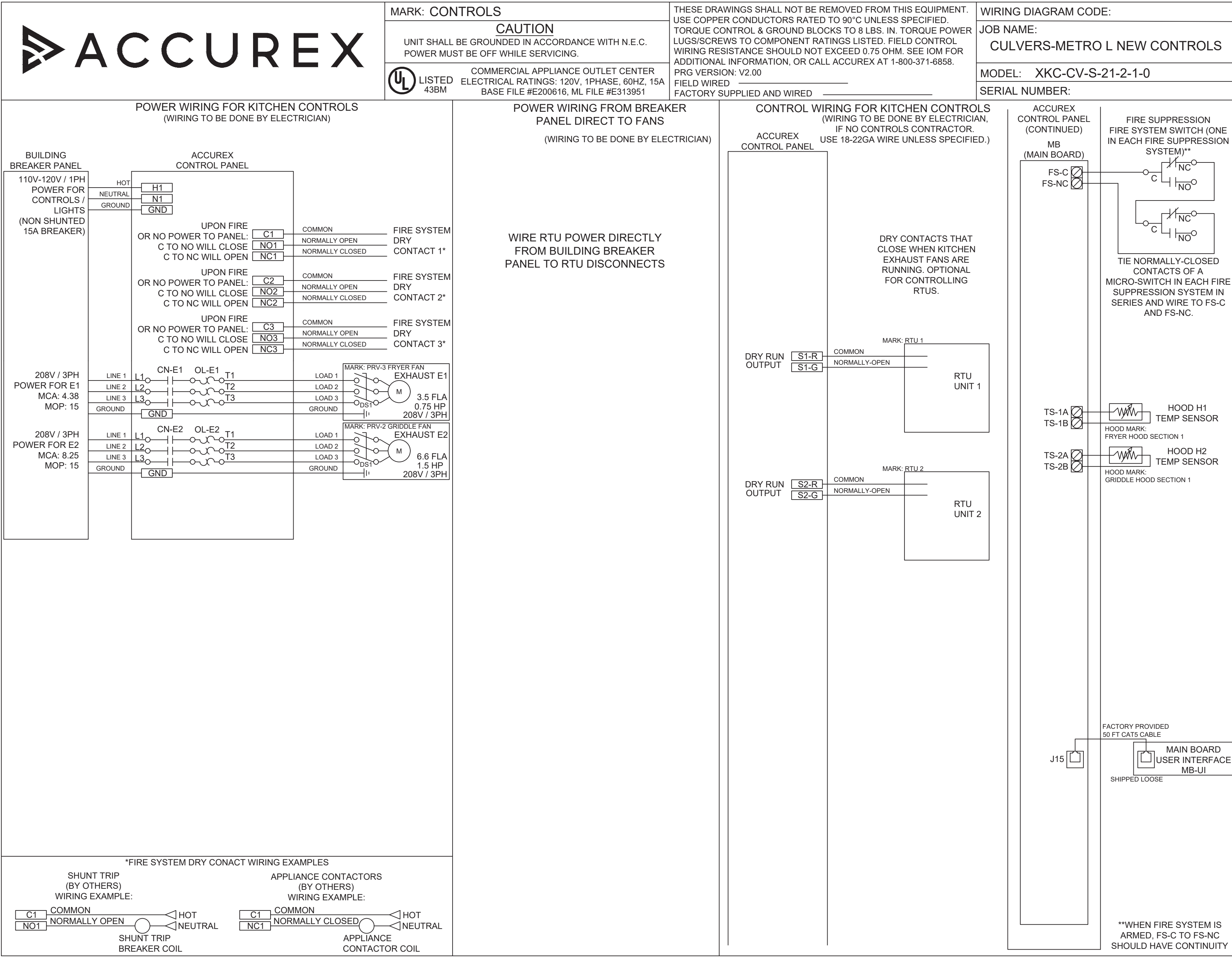
SCALE: 1/24

C28805B



EQUIPMENT SCHEDULE				
ELECTRICAL CONTROL BOX				
DESCRIPTION / ACCUREX MODEL	EXHAUST FAN QTY	SUPPLY FAN QTY	MARK: KFCC	POWER FREQUENCY
MOUNTING LOCATION (CONTROL PANEL / SWITCHES)				
KITCHEN FAN CONTROL CENTER / XFCC	2	0		60 CYCLE
SHIP LOOSE / SHIP LOOSE FOR REMOTE MOUNTING				
CONTROL PANEL ENCLOSURE - 16 GA 304 STAINLESS STEEL ENCLOSURE (NEMA-1) - DIMENSIONS 12 X 18 X 6				
WIRING DIAGRAM # T100-2 - 20				
STARTERS PROVIDED IN CONTROL PANEL - QTY 2				
2 POSITION FAN SWITCH - QTY 1				
INTEGRATED EXHAUST TEMPERATURE INTERLOCK SYSTEM				
-FACTORY MOUNTED EXHAUST TEMPERATURE SENSORS - QTY 2				
-COMPLIES WITH INTERNATIONAL MECHANICAL CODE 2006 SECTION 507.2.1.1				
TURN ON EXHAUST IN FIRE				
THERMAL OVERLOADS IN CABINET				
1 SPEED FAN(S)				
SPECIAL DESIGN REQUESTS				
SDR #K0800240 - USE KIT #852883. WIRING DIAG. #Z2905338				

EQUIPMENT SCHEDULE												
Direct Drive Centrifugal Roof Exhaust Fan MARK: PRV-1 Restroom												
Qty	Accurex Model	Volume (CFM)	SP (in wg)	FRPM	Operating Power (hp)	Weight (Lb.)	Size (hp)	V/CP	Encr.	Motor RPM	Windings	FLA
1	XRED-095-D	375	0.5	1479	0.060	43	0.0667	11560/1	OP	1550	1	NA
OPTIONS AND ACCESSORIES												
UL/ULC 705 Listed - "Power Ventilators"												
Switch, NEMA-1, Toggle, Shipped with unit												
Hinged Curb Cap Kit w/Cables (PN 851018) (Shipped Loose)												
Curb Seal (Attached)												
Damper, WD-100-PR-10X10, Gravity Operated (Loose)												
Solid State Speed Control, Mounted and Wired (PN 5WSSC)												
Roof Curb-Galv., GPI-17-10-G12, Undersized 1.5" total												



EQUIPMENT SCHEDULE												
Ceiling Exhaust Fan MARK: EF-1A Exhaust Fan												
Qty	Accurex Model	Volume (CFM)	SP (in wg)	FRPM	Operating Power (hp)	Weight (Lb.)	Size (hp)	V/CP	Encr.	Motor RPM	Windings	FLA
	XCR-B80	75	0.125	855	0.01	10	0.0	11560/1	OP	900	1	NA
OPTIONS AND ACCESSORIES												
UL/ULC 705 Listed - Electric Fan												
Solid State Speed Control, 6.0 amp, mounted and wired												
Round Hooded Wall cap, (PN WC-6) Shipped loose)												
Designer Grille												
Round duct connection												
Polypropylene Wheel Material												
Energy Star Rated												

FOR TECHNICAL SUPPORT ON ACCUREX CONTROLS PLEASE CALL ACCUREX TECHNICAL SUPPORT: 1-800-371-6858 SECONDARY CONTACTS ARE: AARON VAN KREY 715.841.8521 TYLER SCHILLING 715.841.8749

Thank you for your interest in Accurex

SUBMITTAL

Please return one approved print to your Greenheck Representative including signature, date, and answers to all submittal "verify" notes and questions. Fabrication will not begin until after approved drawings are received.

APPROVED AS SUBMITTED

APPROVED AS NOTED

REJECTED - REVISE AND RESUBMIT

SIGNATURE _____ DATE _____

REV	DESCRIPTION	DATE

ACCUREX

CULVER'S MASTER TEMPLATE

SCALE: 1/24

C28805C

VENTILATION SYSTEM NOTES

Greenheck ventilators are designed in compliance with all national codes: NFPA # 96, national electric code, BOCA, uniform mechanical code, international mechanical code, and southern building conference. See national evaluation report #436 for allowable values, and/or conditions of use concerning material presented in this document. Local codes may vary. It is the responsibility of the purchaser to submit drawings to local authorities.

Exhaust and supply air volumes are to be maintained within -5% to +10% tolerance of values indicated. Static pressure(s) indicated are for the ventilator at the duct connection(s) only.

The grease filter face velocities are based on the filter manufacturers recommendations for maximum grease extraction. Inlet opening air velocities for waterwash, dry cartridge and high velocity cartridge filters manufactured by Greenheck are designed to deliver maximum grease extraction.

Hoods installation (by others unless otherwise noted) shall be in accordance with NFPA # 96 and applicable building codes.

PROPRIETARY INFORMATION NOTICE

This document is and contains confidential trade secret information of the company and remains property of the company and is to be returned upon request. Neither it nor information is contained may be reproduced or disclosed to persons not having a need-to-know consistent with the purpose of the loan document without written permission.

© 2021

NEW CULVER'S RESTAURANT
2100 N Michigan St
Plymouth, IN 46563
County of MARSHALL

OWNER:
HF Real Estate Plymouth, LLC
2915 Briantary Court
Elkhart, IN 46514
Andrew Habich
708-715-4055

OLLMANN ASSOCIATES ARCHITECTS, P.C.
200 South State Street
Belvidere, Illinois 61008
815-544-7790 Phone

FAN SCHEDULE & DETAILS

© OAA
All rights reserved; any copying, transmittal or disclosure subject to OAA written approval.

Revision: _____
Date: 8-31-2021

2021-031

M204

CONSTRUCTION SET 10-19-2021